

PLAYGROUND EQUIPMENT PIECE DISCUSSION & SELECTION

Oak Park Heights Park
December 11, 2023



MEETING FORMAT

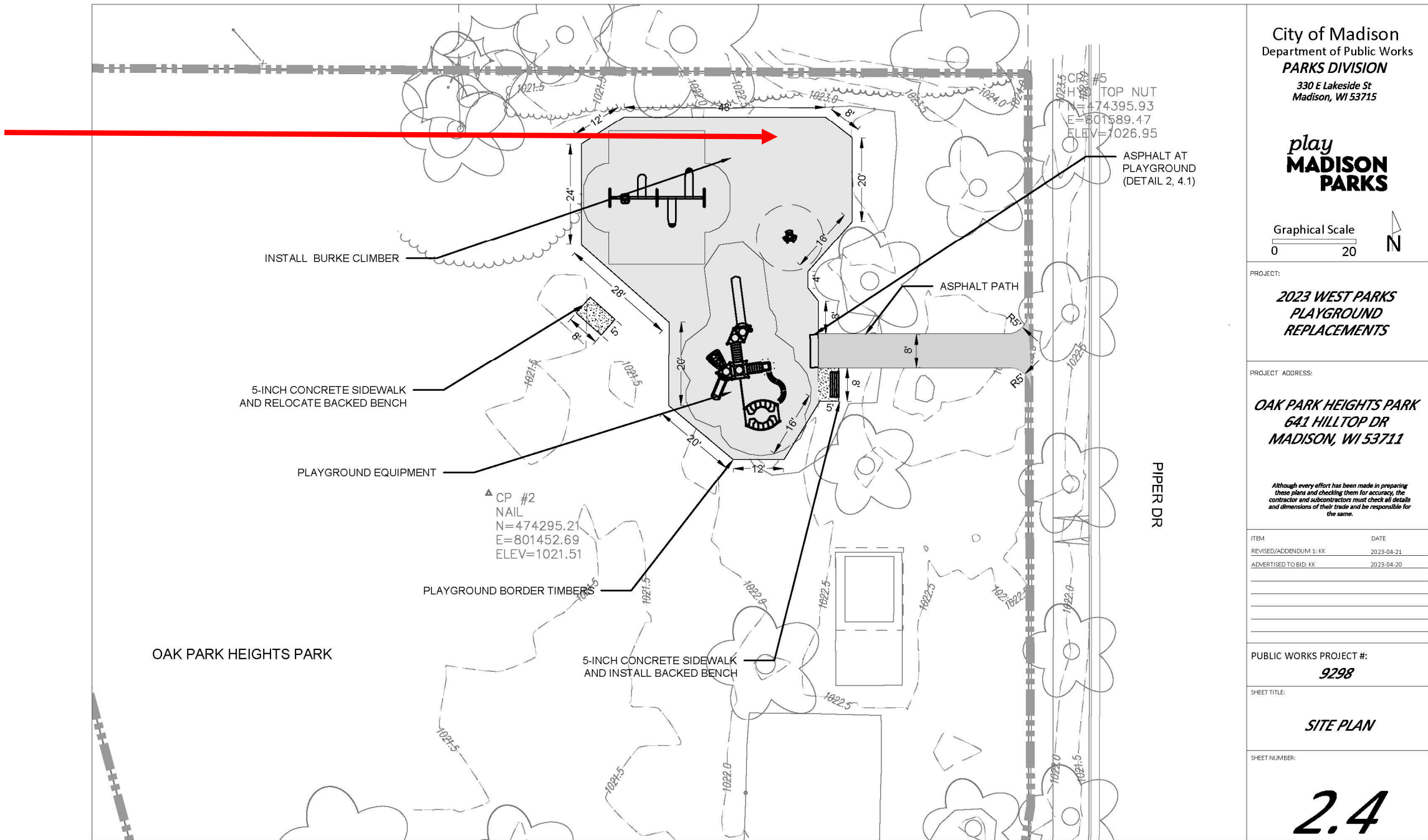
- 1. BRIEF review of events leading to tonight's meeting**
- 2. Overview of as-built drawing & pictures of the playground**
- 3. Review & discussion of stand-alone playground equipment piece options and voting!**



WHAT HAPPENED?



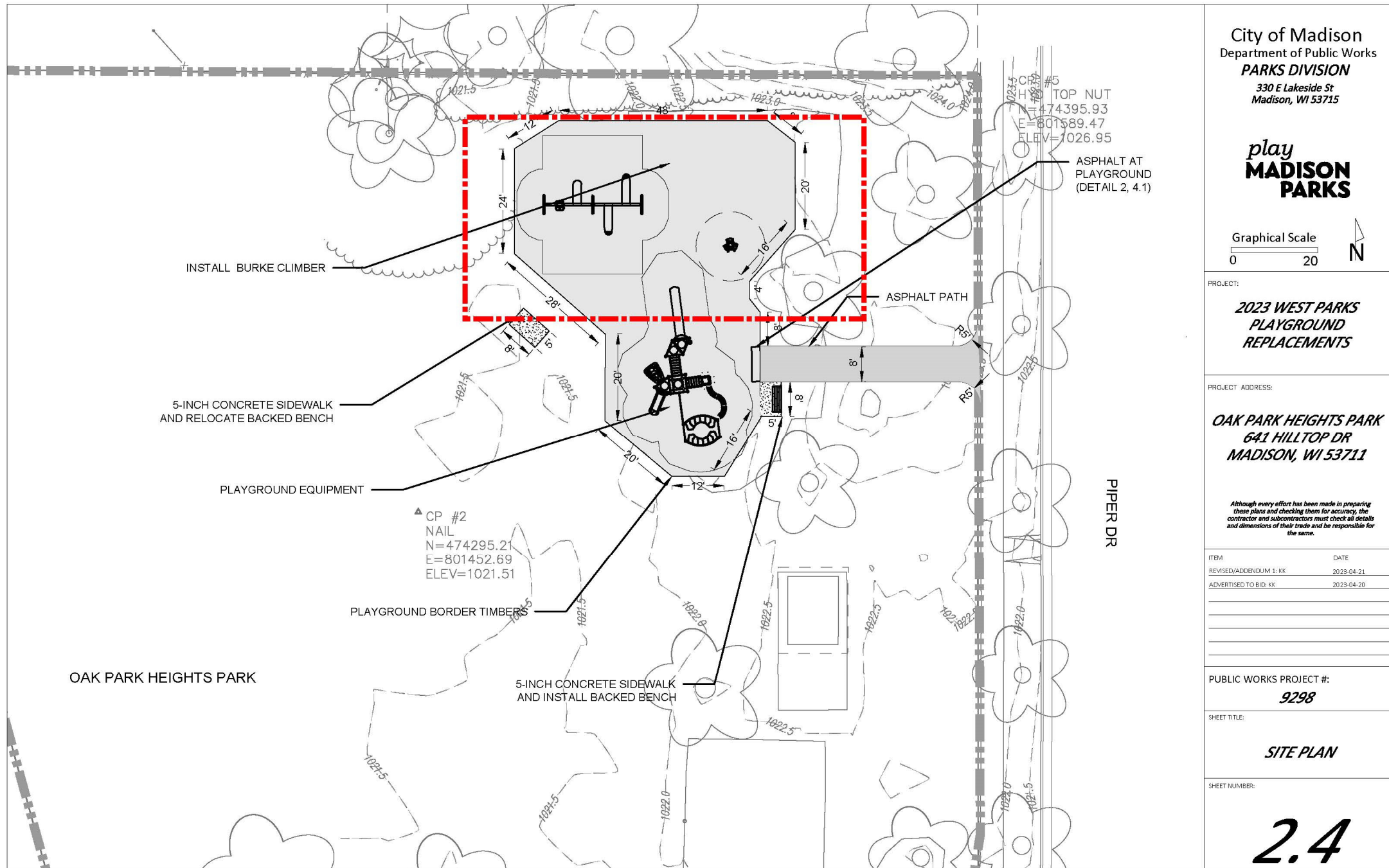
Burke Climb-Around



PLAYGROUND AS-BUILT IMAGES



PLAYGROUND AS-BUILT PLAN VIEW



PLAYGROUND AS-BUILT PLAN VIEW



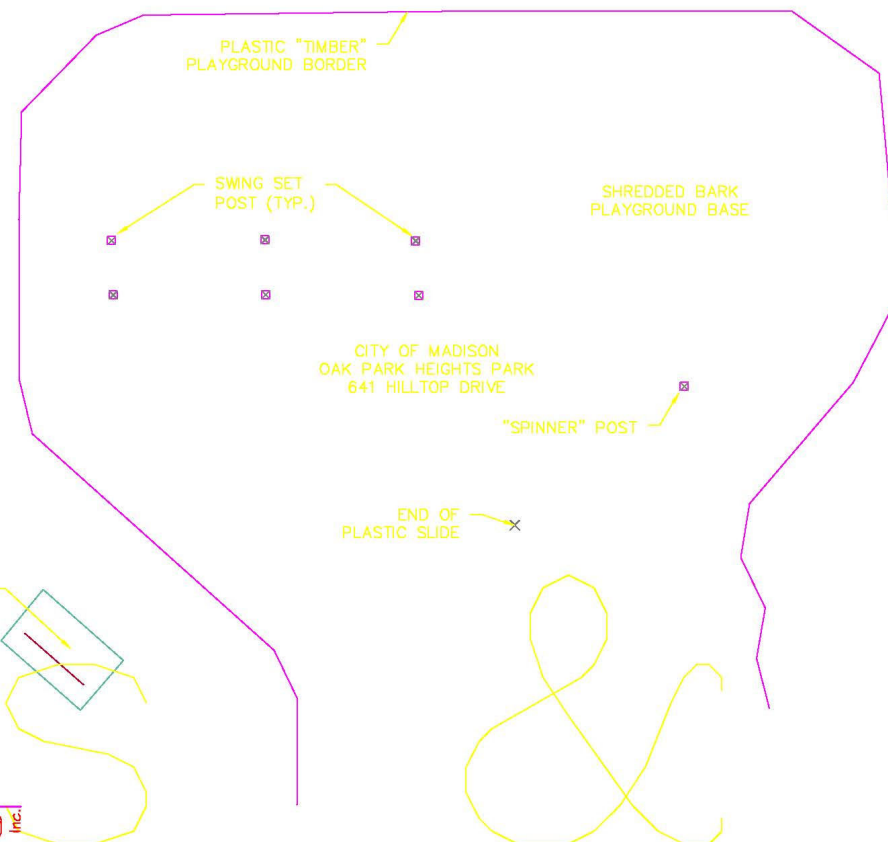
Dial **811** or (800) 242-8511
www.DiggersHotline.com

AS-CONSTRUCTED SURVEY

A PART OF OAK PARK HEIGHTS PARK BEING LOTS 130 TO 133, OAK PARK HEIGHTS REPLAT AS RECORDED IN VOLUME 14 OF PLATS, ON PAGE 28, DANE COUNTY REGISTRY, LOCATED IN THE NORTHEAST QUARTER OF THE SOUTHWEST QUARTER OF SECTION 29, TOWNSHIP 07 NORTH, RANGE 09 EAST, CITY OF MADISON, DANE COUNTY, WISCONSIN



SCALE : ONE INCH = TEN FEET



NOTES:

- 1) Except as specifically stated or shown on this map, this survey does not purport to reflect any of the following which may be applicable to the subject real estate: easements; building setback lines; restrictive covenants; subdivision restrictions; zoning or other land use regulations; and any other facts that an accurate and current title search may disclose. Survey was performed without the benefit of a title report.
- 2) No attempt has been made as a part of this survey to obtain or show data concerning existence, size, depth, condition, capacity, or location of any utility or municipal/public service facility. For information regarding these utilities or facilities, please contact the appropriate agencies.
- 3) Date of field work: November 20, 2023
- 4) Surveyor has made no investigation or independent search for easements of record, encumbrances, restrictive covenants, ownership title evidence, or any other facts that an accurate and current title search may disclose.
- 5) All buildings, and surface and subsurface improvements on and adjacent to the site are not necessarily shown hereon.
- 6) All trees, hedges and ground cover on the site may not necessarily be shown hereon.
- 7) Additional buried utilities/structures may be encountered. No excavations were made to located utilities. Before excavations are performed contact Digger's Hotline.

SURVEYED FOR :
CITY OF MADISON — PARKS DIVISION

SURVEYED BY :
Burse
surveying & engineering

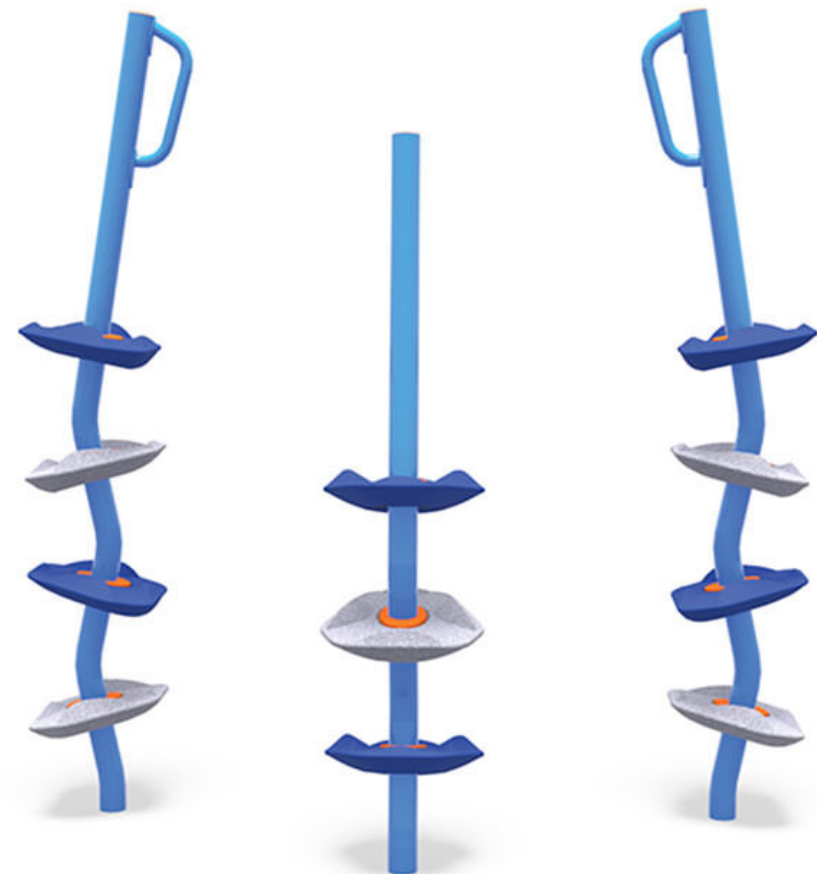
2801 International Lane, Suite 101
Madison, WI 53704 608.250.9263
Fax: 608.250.9266
email: mburse@bse-inc.net
www.bursesurveyengr.com

SHEET 1 OF 1

PLAYGROUND EQUIPMENT PIECE OPTIONS



Burke Rally-Round
<https://www.bciburke.com/products/product/rally-round>



Burke Triple Approach
<https://www.bciburke.com/products/product/triple-approach-climber-bb-3277>

PLAYGROUND EQUIPMENT PIECE OPTIONS



Burke Verto

<https://www.bciburke.com/products/product/verto-climber-3-freestanding>



Burke Verve V

<https://www.bciburke.com/products/product/verve-v>

Q&A AND VOTING



THANK YOU!

- Please stay connected via the playground replacement website & please share with others who may have missed tonight's session
- This presentation and breakout session notes will be posted to the project website afterward
- Parks anticipates that we will order the replacement equipment piece in early 2024, for installation in spring

