

# EAGLE TRACE PARK MASTER PLAN

Public Meeting #1  
11-1-2018


# INTRODUCTION

Sarah Close, City of Madison Parks Division

Sarah Lerner, City of Madison Parks Division



# TONIGHT'S GOALS



Introduce the project

Discuss typical park facilities

The big picture!

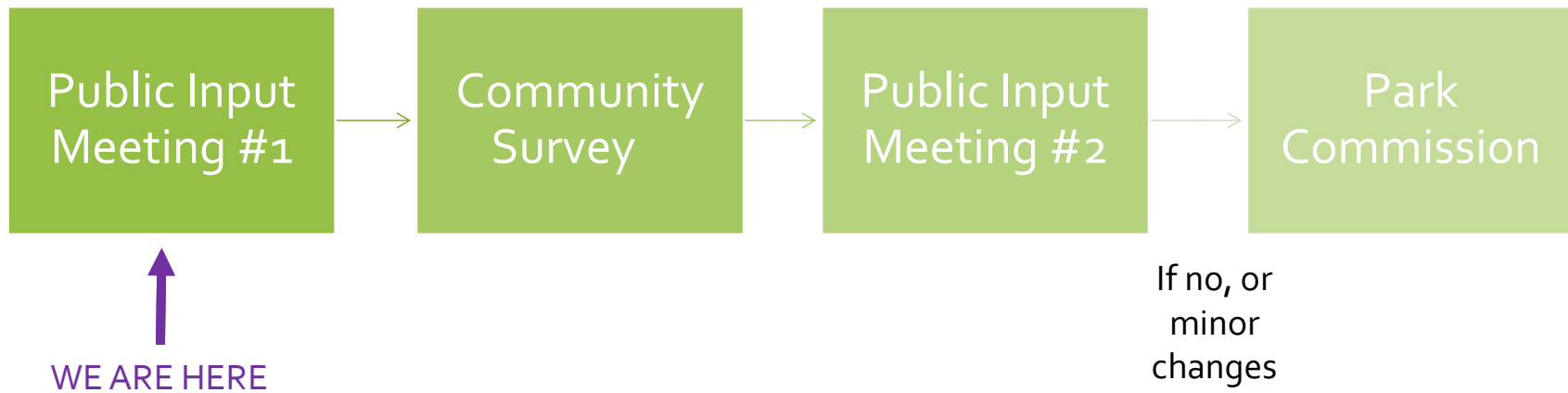
Hear your values and vision for the future park

**DESIGN YOUR OWN PARK!**

# WHAT IS A MASTER PLAN?

- Guides the development of park facilities in the plan.
- Based on neighborhood input.
- Subject to public review.
- Approved by the Board of Park Commissioners.

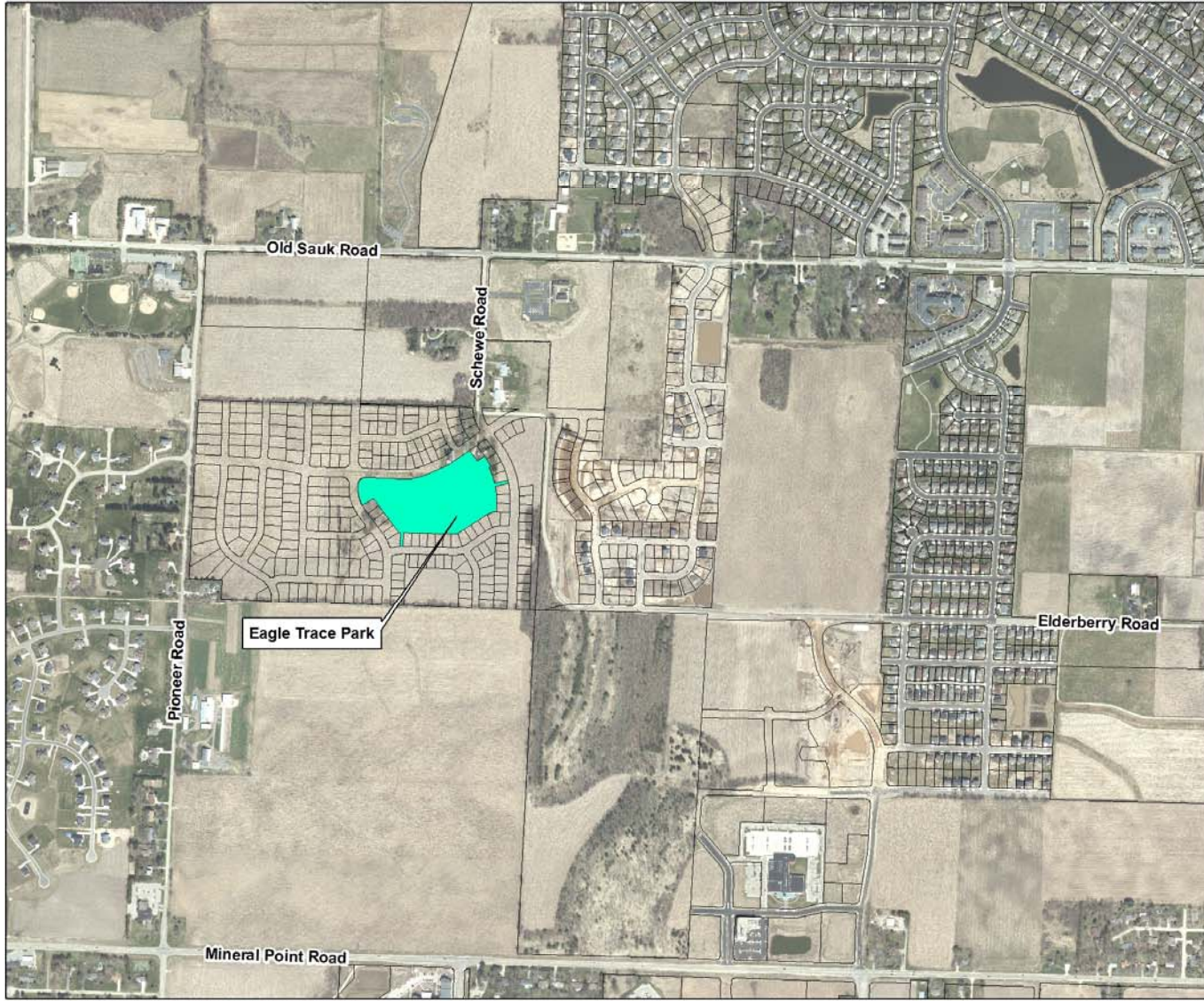
# MASTER PLAN PROCESS



# EAGLE TRACE PARK



- Location
- Context
- History
- Existing Conditions
  - Aerial
  - Site Photos
  - Topography and Slope
  - Soils
  - Vegetation

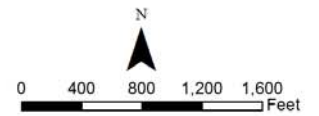
L  
O  
C  
A  
T  
I  
O  
N



Park Location

Legend

-  City of Madison Park
-  Ownership Parcels

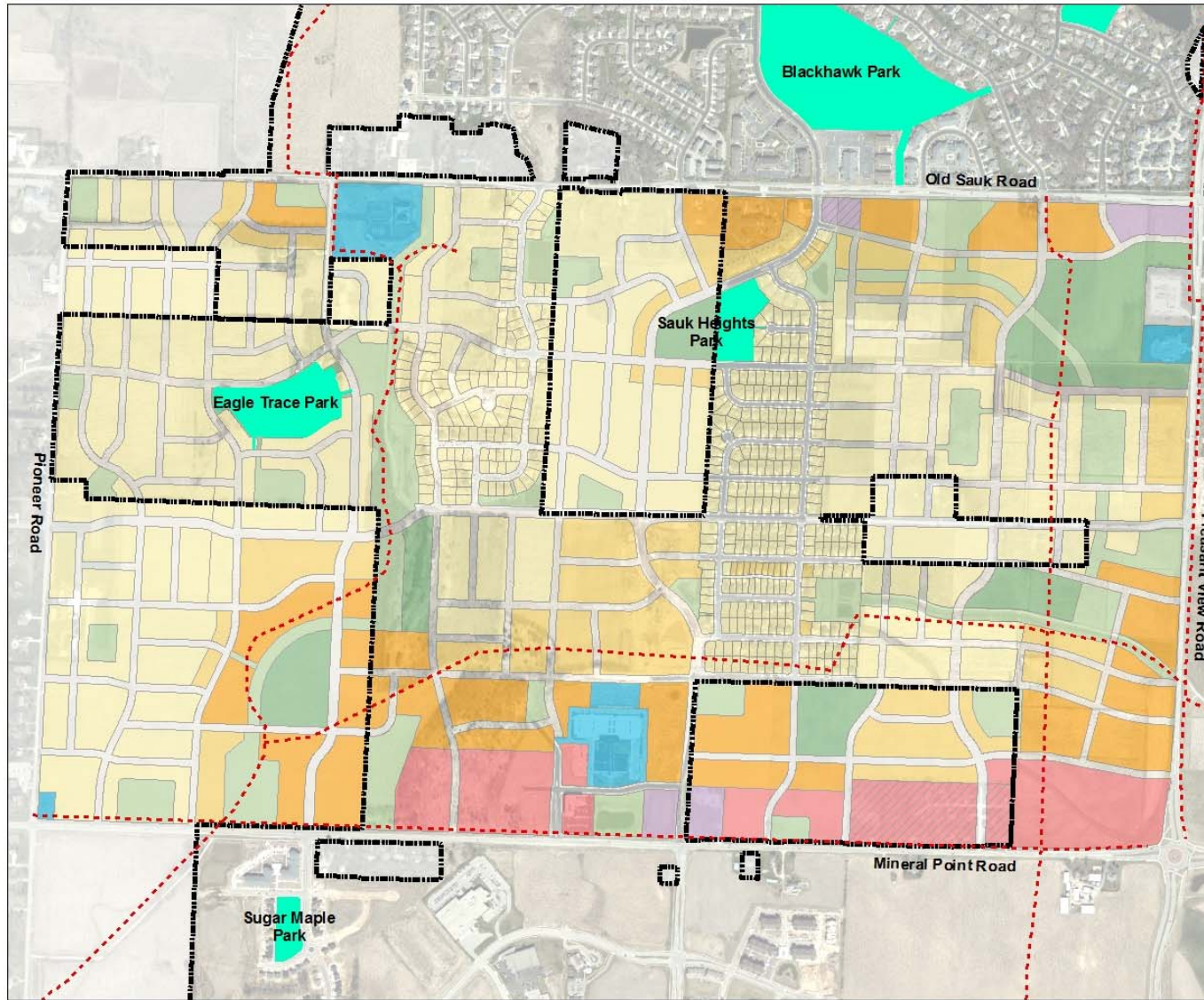




# CONTEXT

- Future Land Development
- Parks within 1 Mile of Eagle Trace





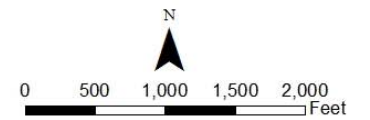
Future Land Development

Legend

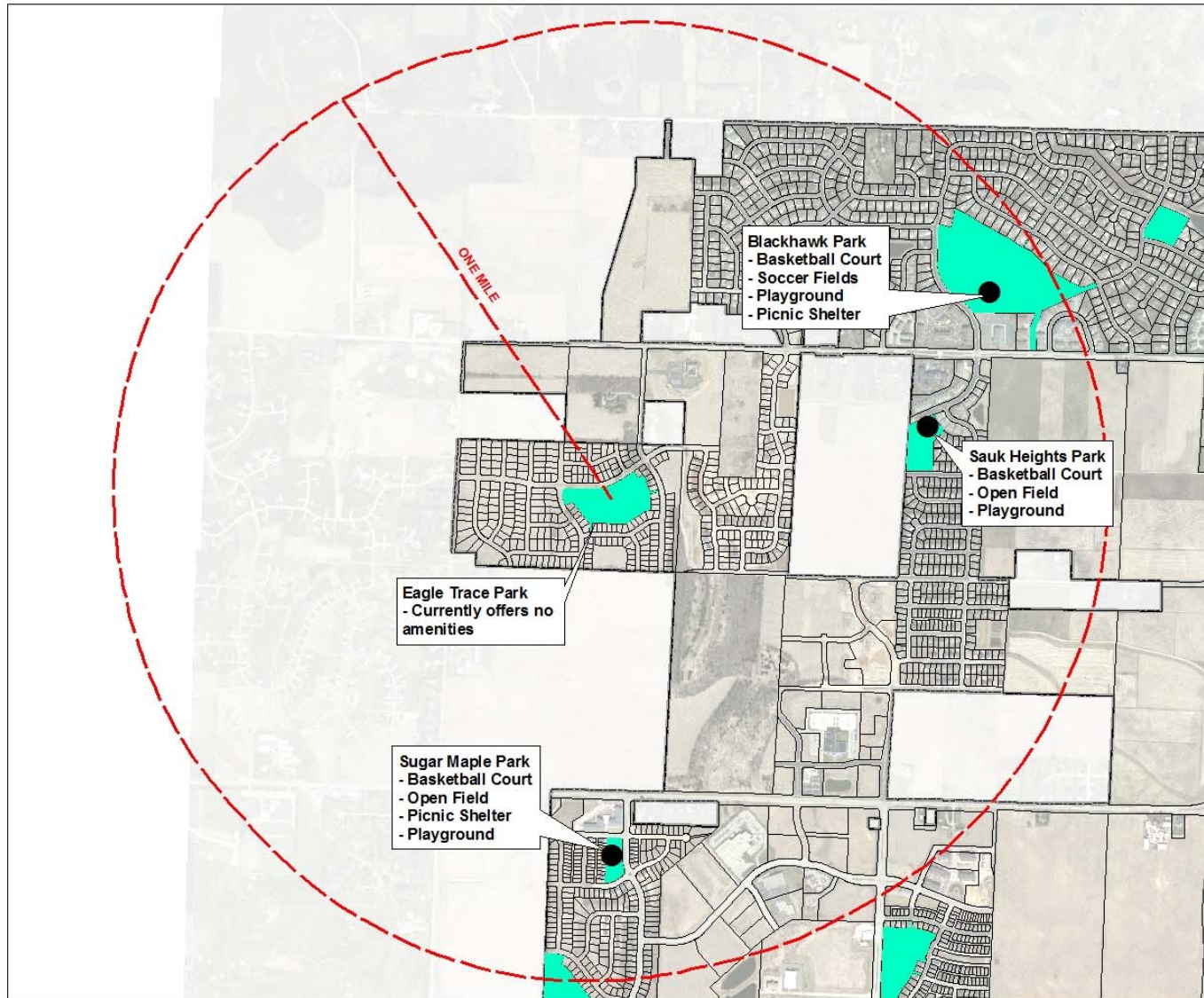
- City of Madison Park
- City of Madison Boundary
- Ownership Parcels
- MPO Proposed Off Street Bike Path

Land Use

- Employment
- Housing Mix 1
- Housing Mix 2
- Housing Mix 3
- Institution
- Neighborhood Mixed Use
- Overlay Employment
- Overlay Neighborhood Mixed Use
- Park
- Stormwater and Other Open Space
- Utility





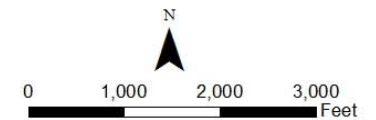
LOCAL AMENITIES



Park Amenities within 1 Mile

Legend

-  City of Madison Park
-  Ownership Parcels



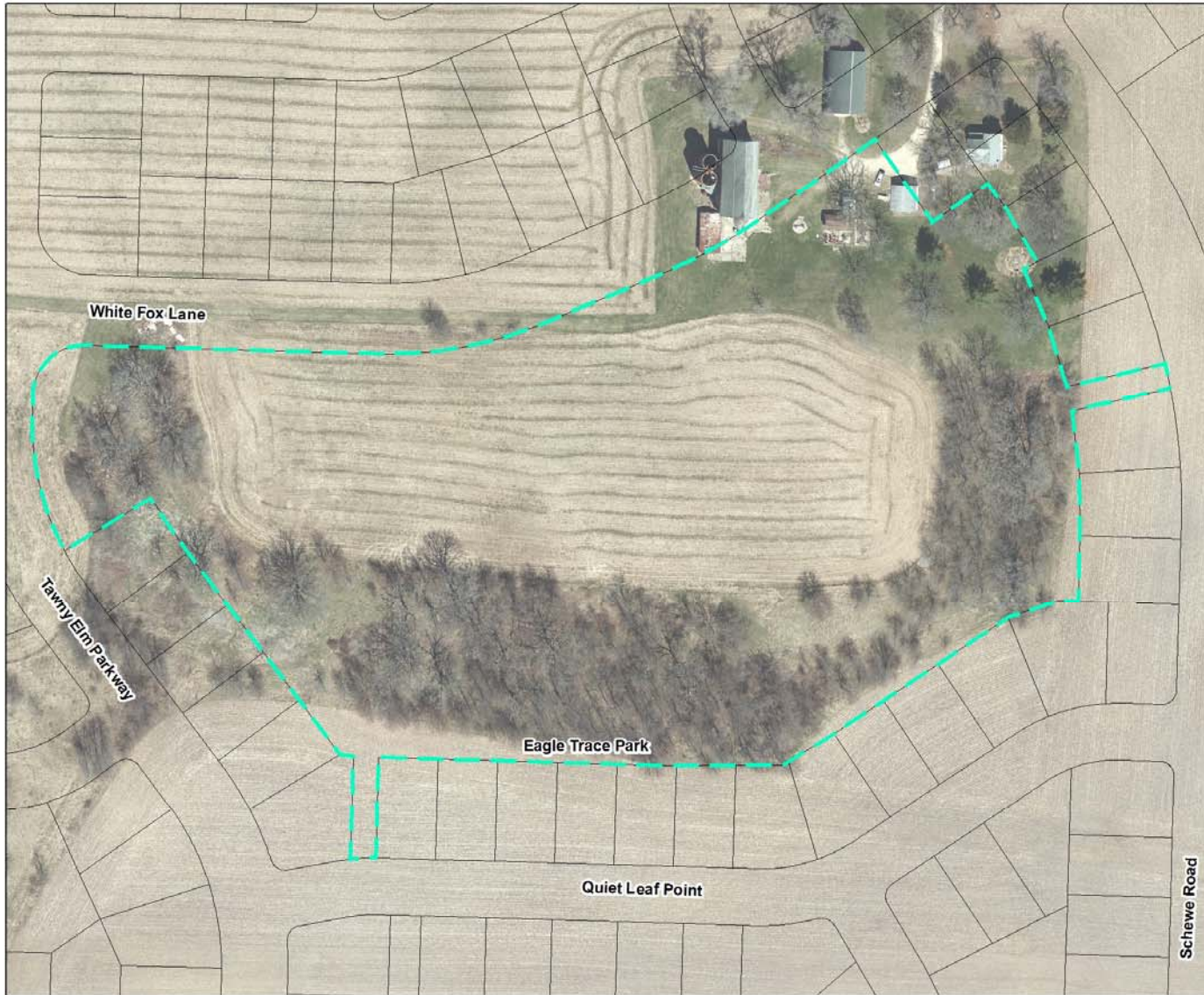
# HISTORY

- 9.37-acre parcel dedicated to the City of Madison in 2018 as part of the Eagle Trace development
- Long history as a crop field and wind break on agricultural property
- No significant or suspected archaeological artifacts/buildings on site

# EXISTING CONDITIONS

- Aerial
- Site Photos
- Topography and Slope
- Vegetation

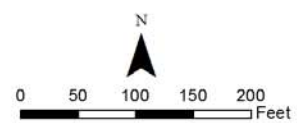




Park Location

Legend

- Eagle Trace Park
- Ownership Parcels





S  
I  
T  
E  
  
P  
H  
O  
T  
O  
S

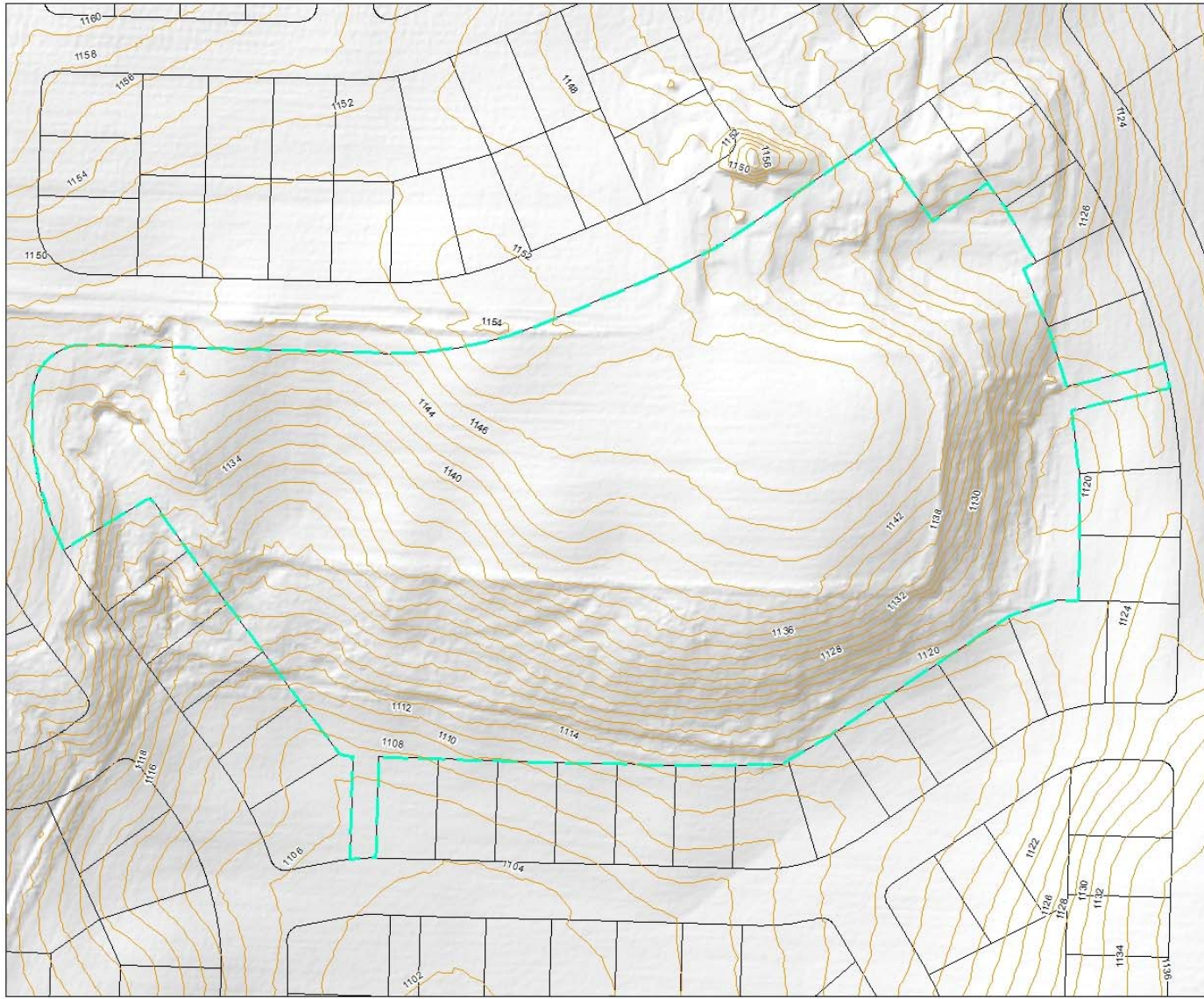


S  
I  
T  
E  
  
P  
H  
O  
T  
O  
S





T  
O  
P  
G  
R  
A  
P  
H  
Y



M:\Maps\Parks GIS\Parks\Eagle Trace\Eagle Trace\_masterplan\_2018.mxd

11/1/2018

Site Topography

Legend

Eagle Trace Park

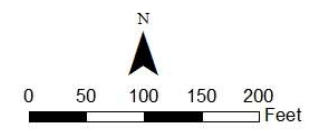
Ownership Parcels

2' Contours

Elevation

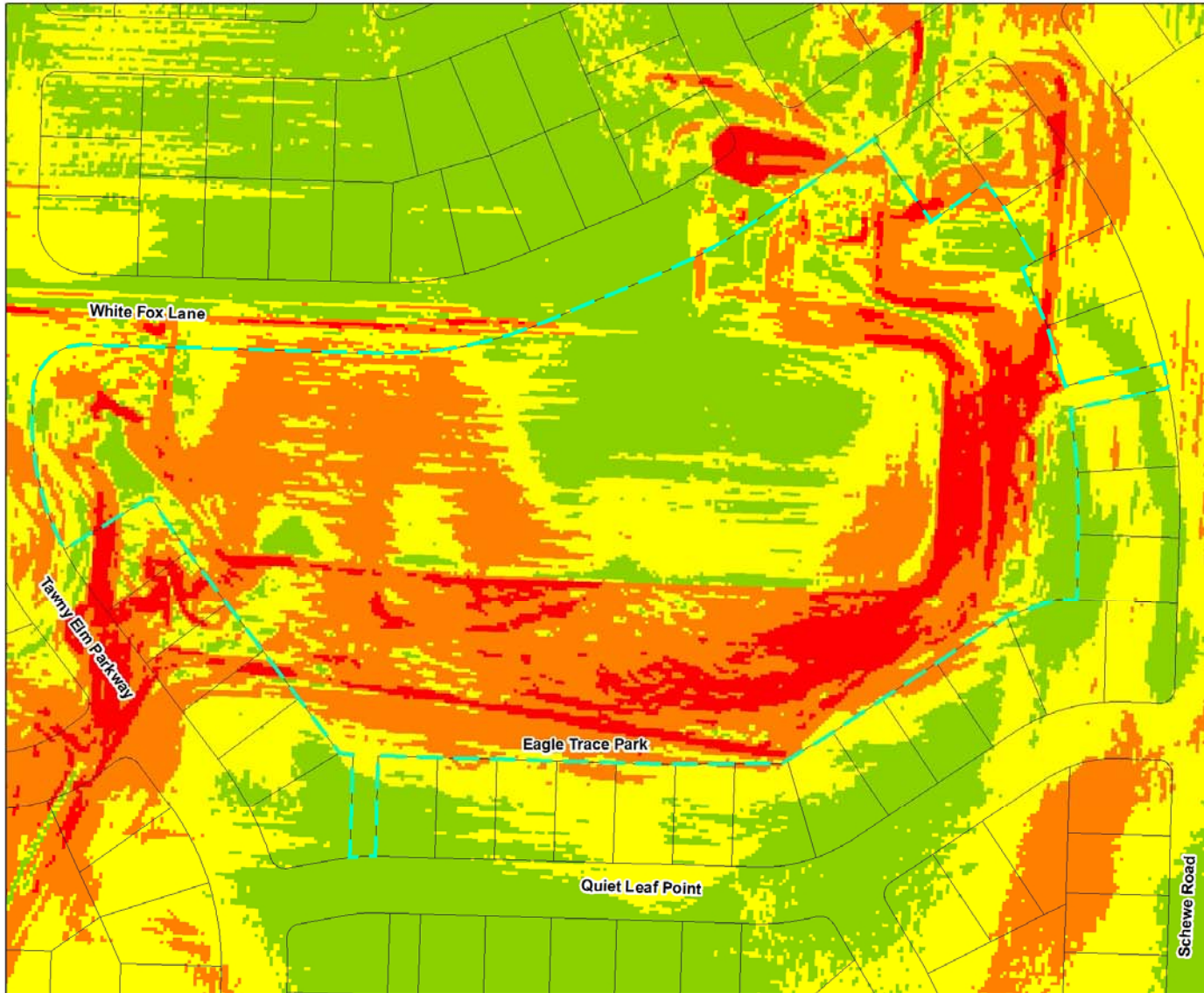
High

Low





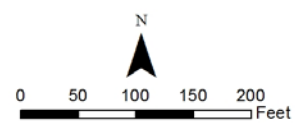
S  
L  
O  
P  
E



Park Slope Inventory

Legend

- Eagle Trace Park
- Ownership Parcels
- Slope (in %)
  - 0
  - 0 - 5
  - 6 - 10
  - 11 - 20
  - 21 - 100



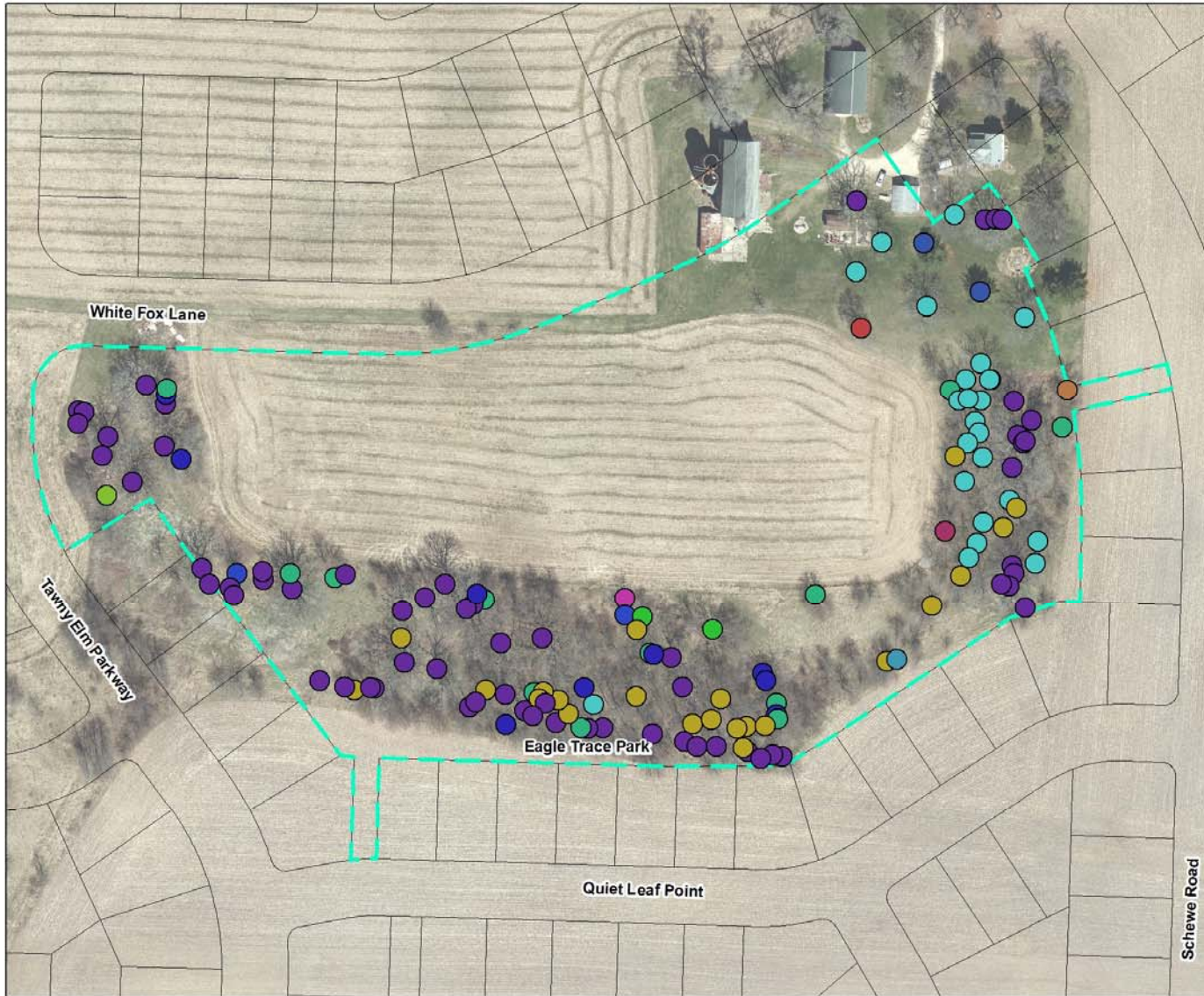
V  
E  
G  
E  
T  
A  
T  
I  
O  
N

- Primarily trees and woody undergrowth
- Trees evaluated by Tree Health Management





V  
E  
G  
E  
T  
A  
T  
I  
O  
N



Park Tree Survey

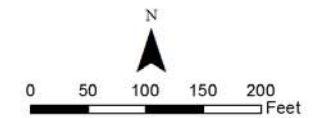
Legend

- Eagle Trace Park
- Ownership Parcels

Tree Species

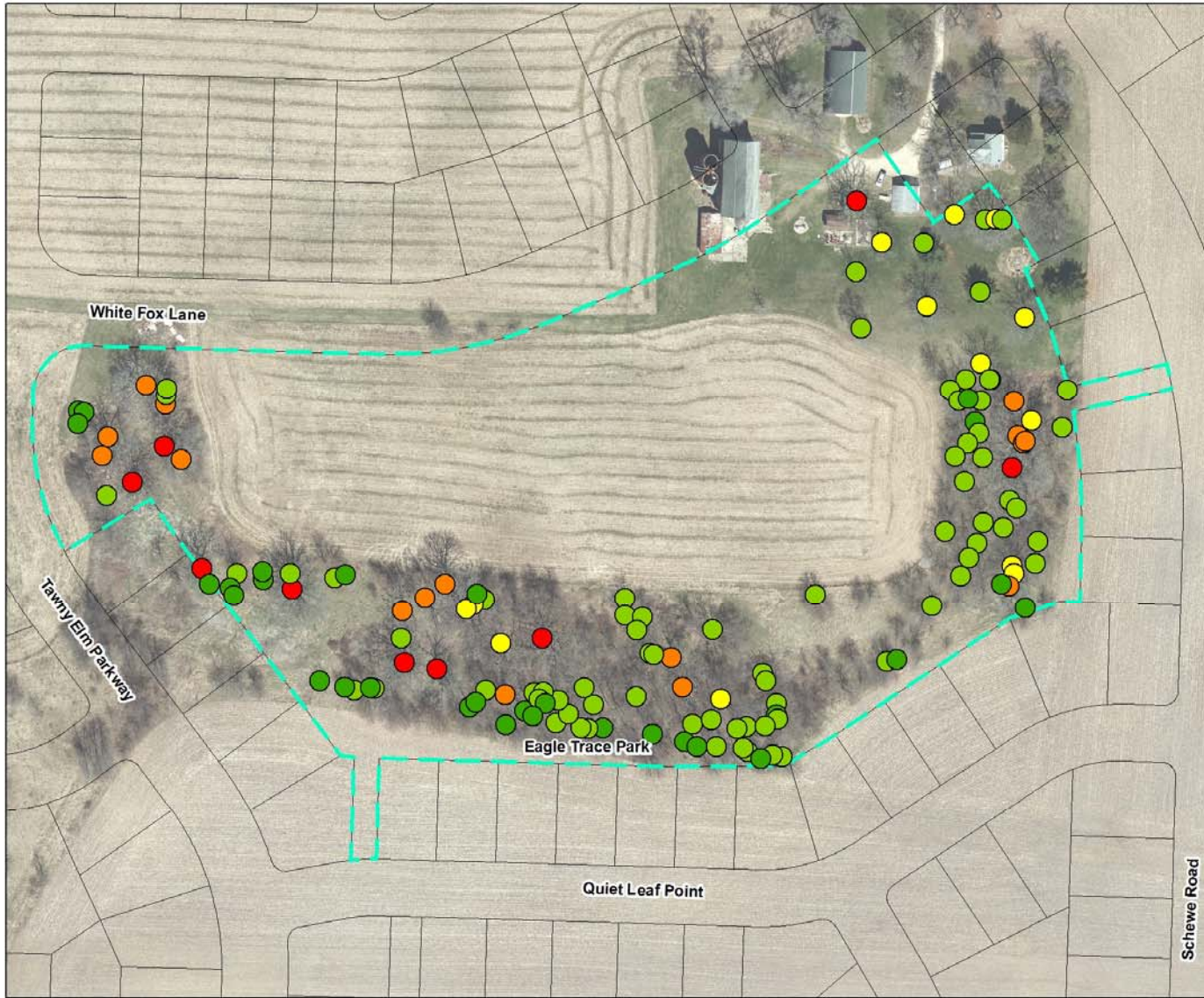
- American Elm- *Ulmus americana* (1)
- Black Ash- *Fraxinus nigra* (1)
- Black Cherry- *Prunus serotina* (22)
- Black Oak- *Quercus velutina* (1)
- Black Walnut- *Juglans nigra* (24)
- Box Elder- *Acer Negundo* (2)
- Buckthorn- *Rhamnus cathartica* (1)
- Bur Oak- *Quercus macrocarpa* (64)
- Hackberry- *Celtis occidentalis* (9)
- Mulberry- *Morus sp.* (12)
- Other (1)
- Red Oak- *Quercus rubra* (2)
- Siberian Elm- *Ulmus pumila* (1)
- White Pine- *Pinus strobus* (2)

Total: 143 trees





V  
E  
G  
E  
T  
A  
T  
I  
O  
N



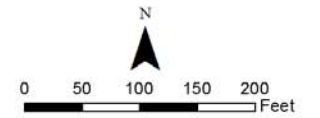
Park Tree Survey

Legend

- Eagle Trace Park
- Ownership Parcels

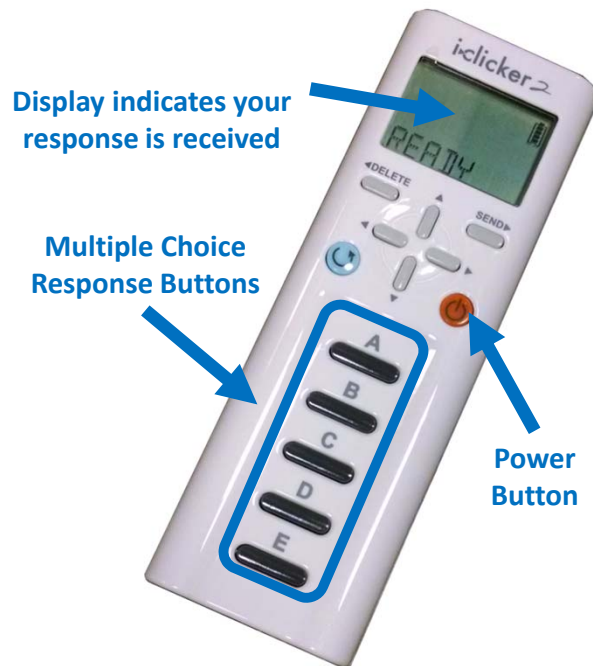
Tree Size in Inches  
(Diameter at Breast Height)

- 4.0 - 8.5
- 8.6 - 17.0
- 17.1 - 28.0
- 28.1 - 39.0
- 39.1 - 46.0



# IClickERS – REAL TIME POLLING

- Push orange button to turn on
- When poll is opened, choose response with A-E buttons
- Display will show a “v” when your response is received
- You can change your answer until the poll closes



## Troubleshooting:

- Display says “Closed” – Poll is closed
- Clicker isn’t working – Push power button to turn off; turn on again
- Clicker still isn’t working – push and hold power button for two seconds, then press A twice to reconnect to receiver.
- Clickers turn off after 10 minutes; Push power button to turn back on.



# HOW LONG HAVE YOU LIVED IN THIS NEIGHBORHOOD?

- A. A few months or less
- B. About a year to two years
- C. About three to five years
- D. Over five years
- E. I don't live in the neighborhood





# WHAT DO YOU FEEL IS MOST LACKING IN YOUR LOCAL COMMUNITY SPACES?

- A. Places to walk or bike for exercise
- B. Places for children to play
- C. Places to picnic and have gatherings
- D. Places to grow and eat local food
- E. Other



# HOW OFTEN DO YOU VISIT A PARK OR OUTDOOR RECREATION AREA?

- A. Multiple times per week
- B. About once or twice a week
- C. Once or twice a month
- D. A few times a year
- E. Other





# WHY DO YOU TYPICALLY VISIT PARKS/OUTDOOR RECREATION AREAS?

- A. To walk/hike or view nature
- B. To play a game or participate in a field sport
- C. To take my child(ren) to a playground
- D. To go to an event or festival
- E. Other



# WHAT IS YOUR MOST DESIRED AMENITY AT EAGLE TRACE PARK?

- A. Fields/courts for sports and games
- B. Hiking trails and natural areas
- C. Off-leash dog area
- D. Play equipment for children
- E. Other



# CITY OF MADISON PARK TYPICAL NEIGHBORHOOD PARK AMENITIES

- Playground
  - Age Range, Material, Style, Colors
- Basketball Courts
- Softball/Baseball Backstop
- Sun Shelter
- Open Fields for Soccer/Frisbee/Catch/Etc.
- Trails
- Site Furnishings (Benches, Signage, Trash Bins)



# UNIQUE NEIGHBORHOOD PARK AMENITIES

- Fenced Off-Leash Dog Park
- Mountain Bike Trails
- Community Gardens (Managed by Community GroundWorks)
- Edible Landscaping
- Hiking Trails
- Volleyball
- Tennis Courts
- Prairie Restorations



# DESIGN YOUR PARK!

## Activity #1: Park Amenities

Questions to answer:

- What's been your best experience of a public space?
- What do you want to experience in Eagle Trace Park?
- What design elements would best support that experience?

We are going to work in groups for approx. 20 minutes, then regroup to share our ideas!



# DESIGN YOUR PARK!

## Activity #2: Playground Design

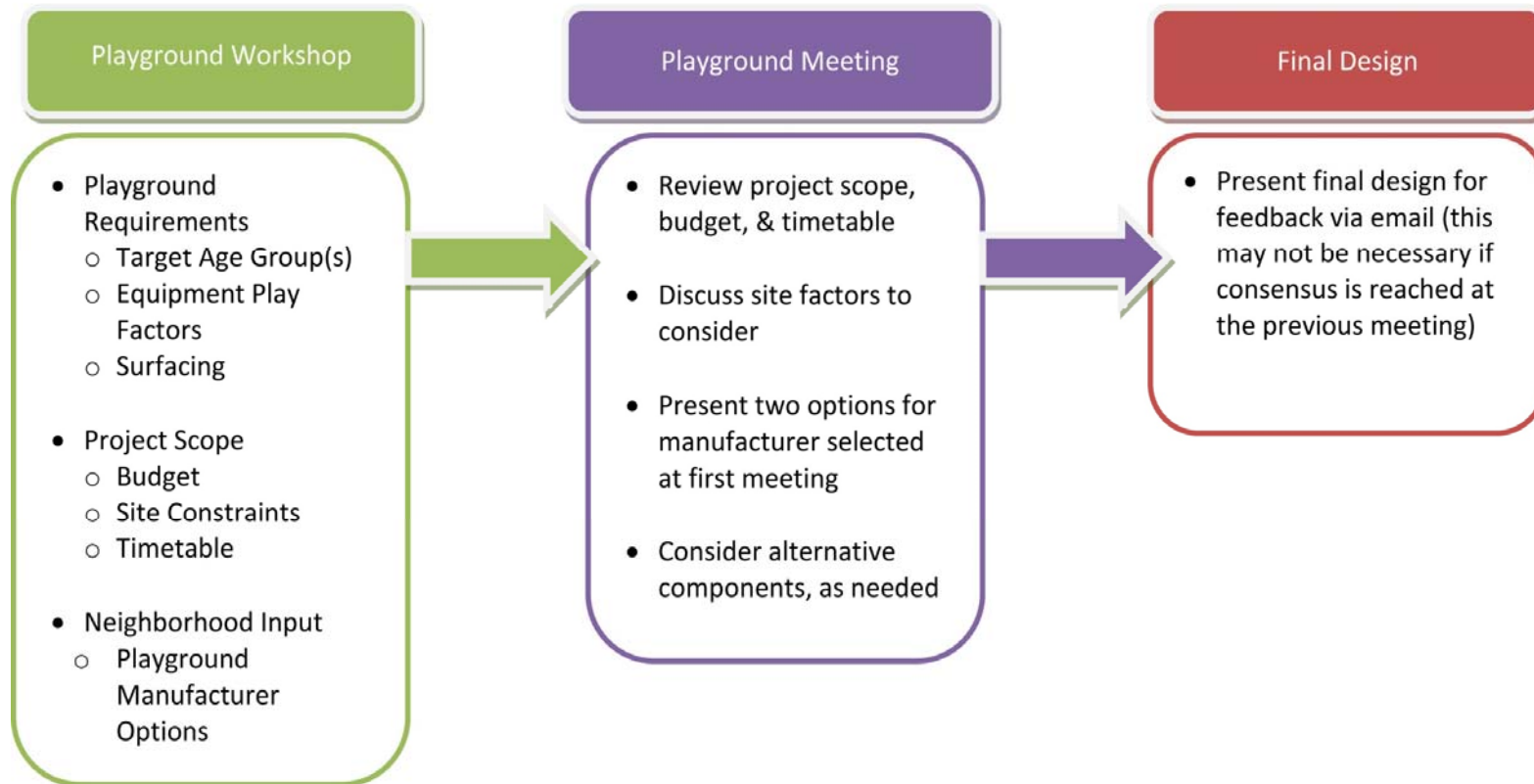
Factors to consider:

- Target age group of play equipment
- Specific play elements desired
- Surfacing material

We are going to consider the options for about 10 minutes, then regroup to discuss and answer any questions. We will vote on surfacing material after we regroup.



# PLAYGROUND DESIGN PROCESS



# NEXT STEPS

- Gathering public input
  - Be sure to contact us with comments or take/submit the Community Survey!
- Madison Parks will analyze public input and site conditions
  - What do residents want and what can the site provide?
- Public Input Meeting #2
  - Day and time to be announced
  - Conceptual plans will be presented for public review and voting!

Watch the City Parks "Project Portal" website for the Community Survey and project updates!  
[www.cityofmadison.com/parks/projects/eagle-trace-park-master-plan](http://www.cityofmadison.com/parks/projects/eagle-trace-park-master-plan)







**DON'T FORGET TO RETURN  
YOUR ICLICKERS!**

Box for the IClickers is in the  
back of the room.

# COMMENTS? QUESTIONS?

CONTACT US:  
SARAH CLOSE  
OFFICE: (608) 263-6850  
EMAIL: [SCLOSE@CITYOFMADISON.COM](mailto:SCLOSE@CITYOFMADISON.COM)

