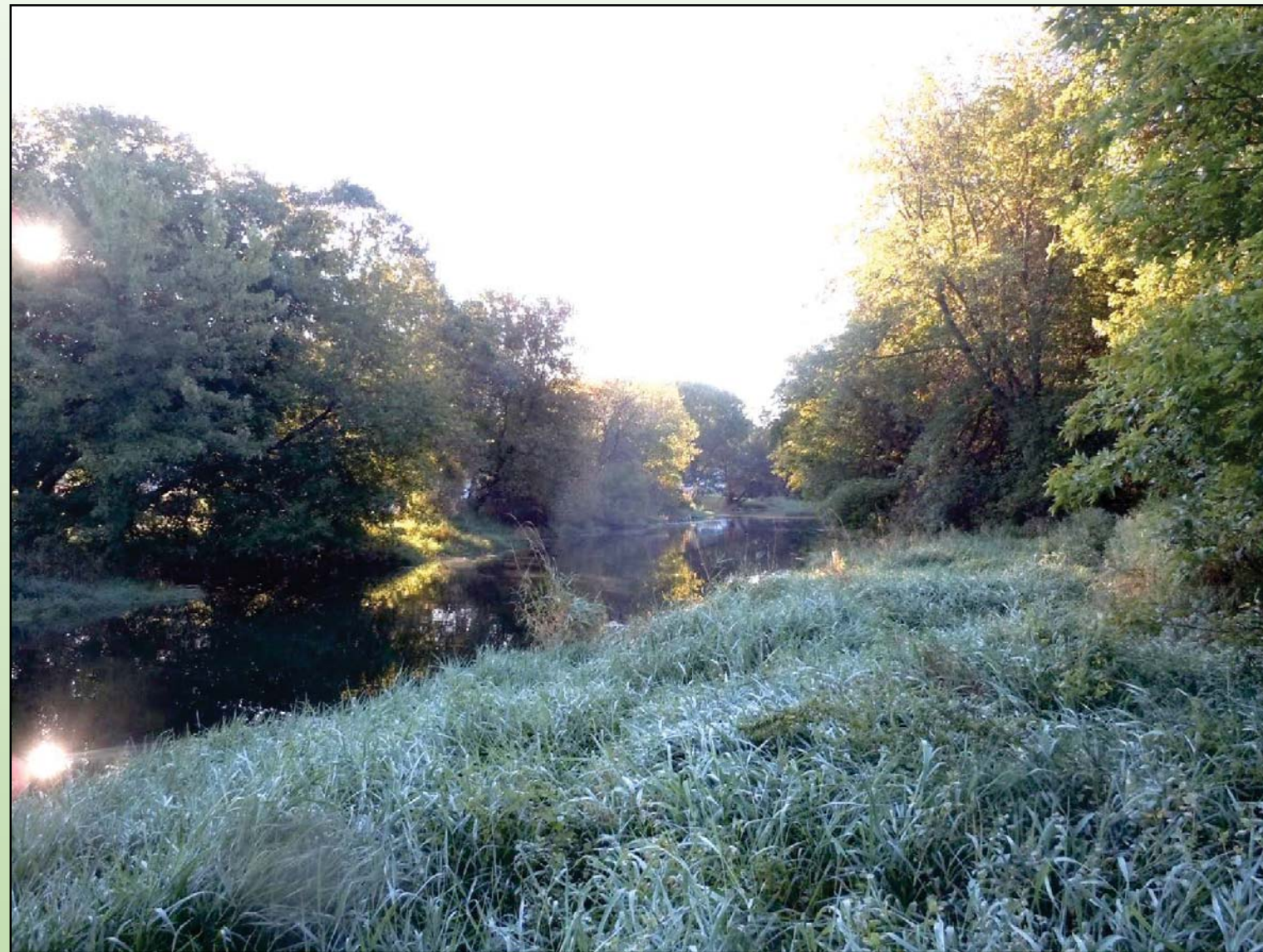


Garver Feed Mill – North Plat and Olbrich Botanical Gardens Operations Area

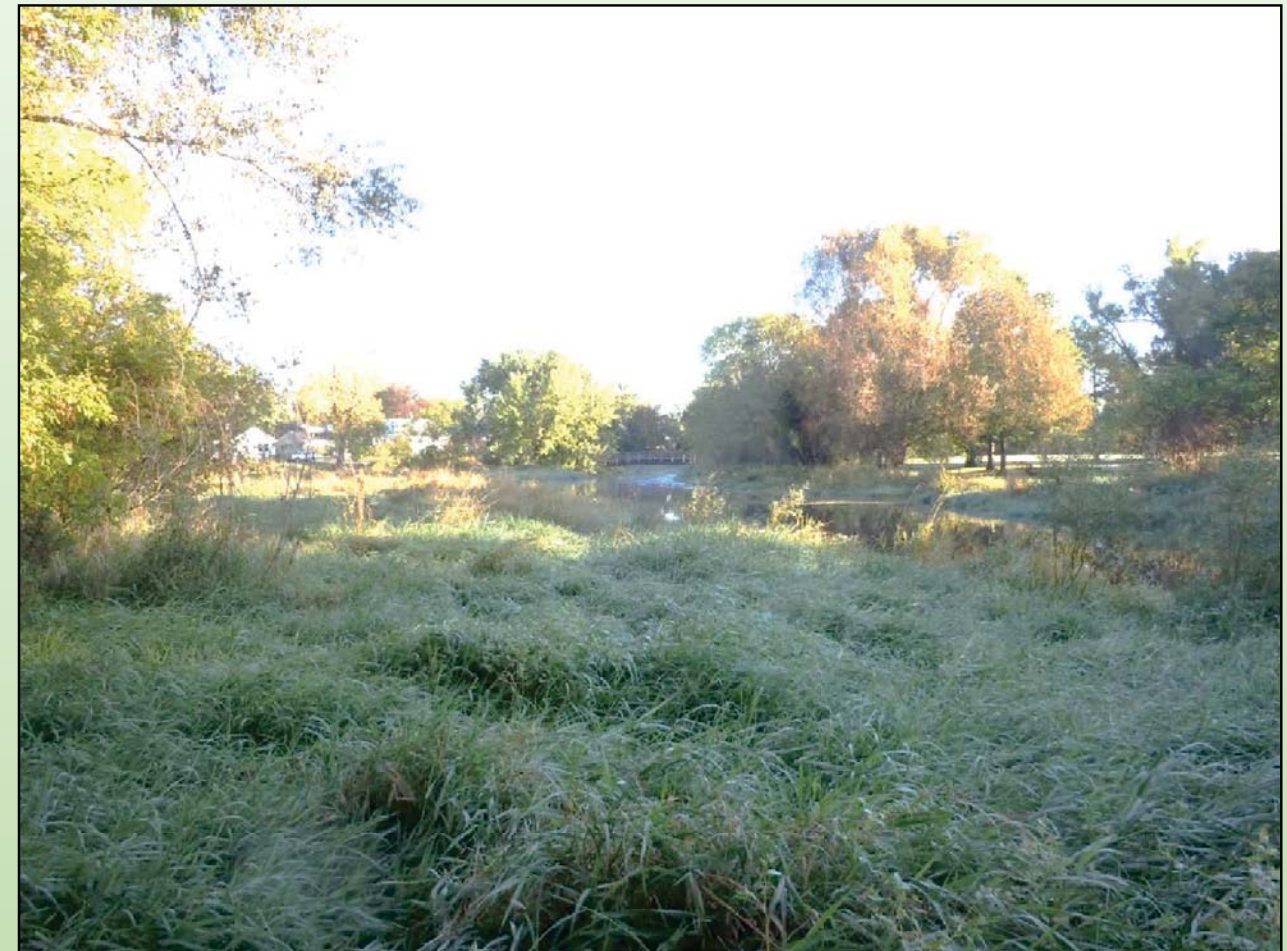


Garver Feed Mill – North Plat and Olbrich Botanical Gardens Operations Area

City Staff:

Parks Division

Mike Sturm – Project Manager



Garver Feed Mill – North Plat and Olbrich Botanical Gardens Operations Area

Meeting Agenda:

Overall Site

- Site Context
- Site History
- Existing Conditions

Potential Improvements to North Plat

- Approved Master Plan
- Future Bike Path Connection
- Material Management
- Potential Site Improvements

Proposed Changes to Olbrich Botanical Gardens Operations Area

- Maintenance Shed
- Hoop Houses
- Leaf Mulch
- Ice Rink

Garver Feed Mill – North Plat and Olbrich Botanical Gardens Operations Area

Meeting Format:

- 25 min. - Parks Presentation
- Initial Polling
- Public Comments (3 min. limit per speaker)
- Second Polling
- General Discussion

Garver Feed Mill – North Plat and Olbrich Botanical Gardens Operations Area

Meeting Requests:

- Please hold comments and questions to end of presentation.
- Polling is only a ‘snap shot’ of the preferred options, not a final vote.
- Please be respectful of the time limit so everyone has an opportunity to comment.
- Please do not interrupt the person speaking.

Olbrich Park – Service Area



Garver Feed Mill – North Plat



Garver Feed Mill – North Plat



Garver Feed Mill – North Plat

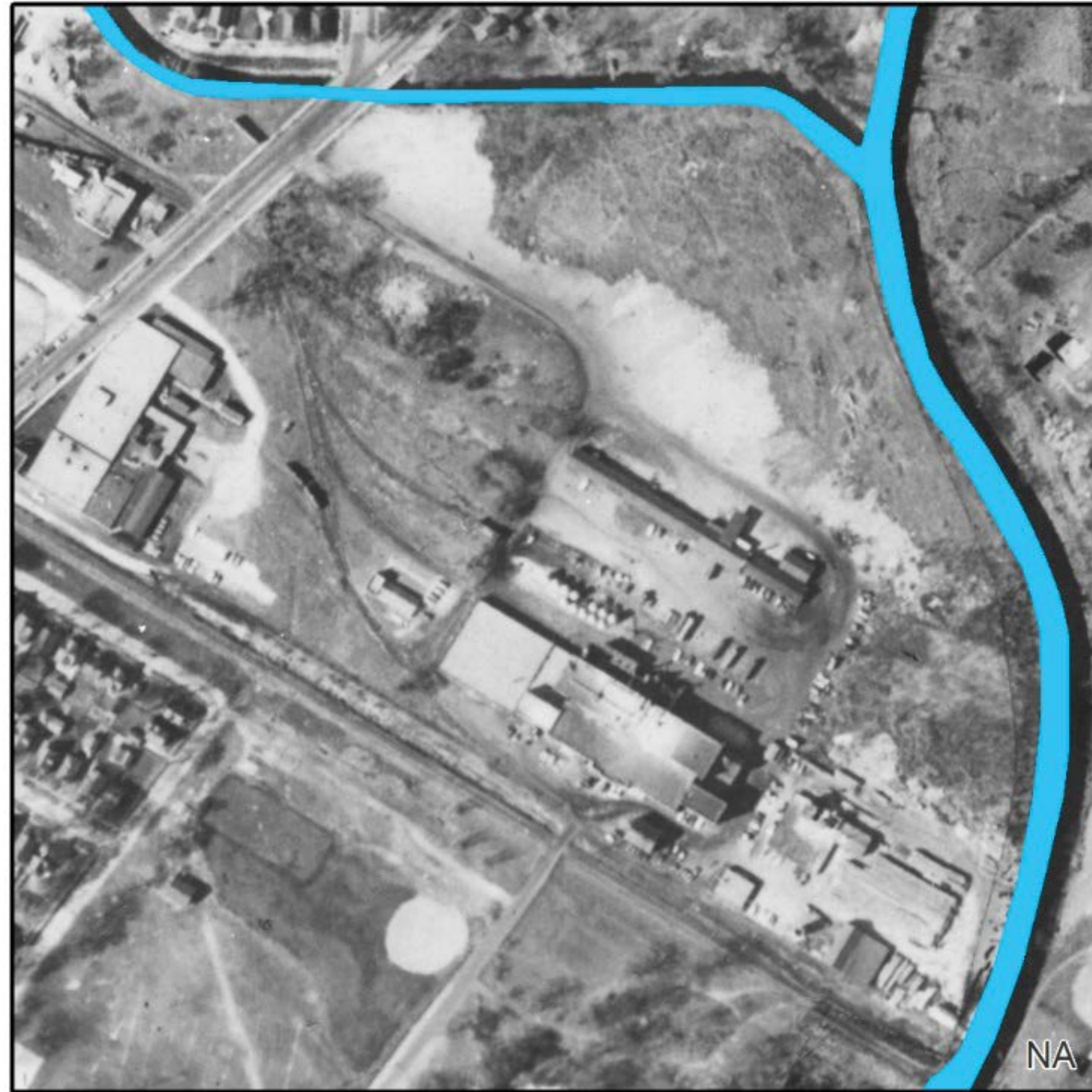


Image © Wisconsin Historical Society

Garver Feed Mill – North Plat 1955



Garver Feed Mill – North Plat 1957



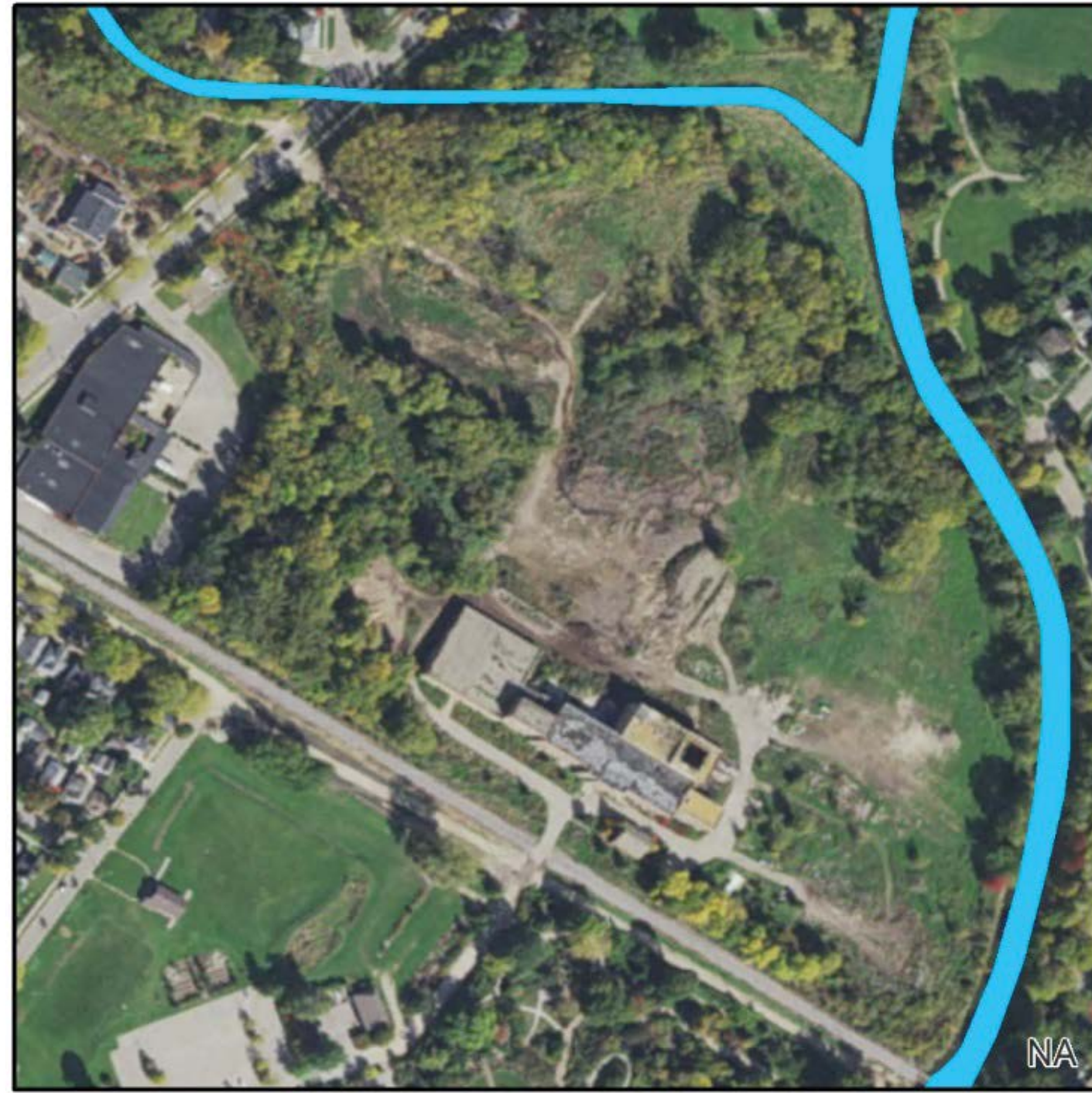
Garver Feed Mill – North Plat 1976



Garver Feed Mill – North Plat 2000



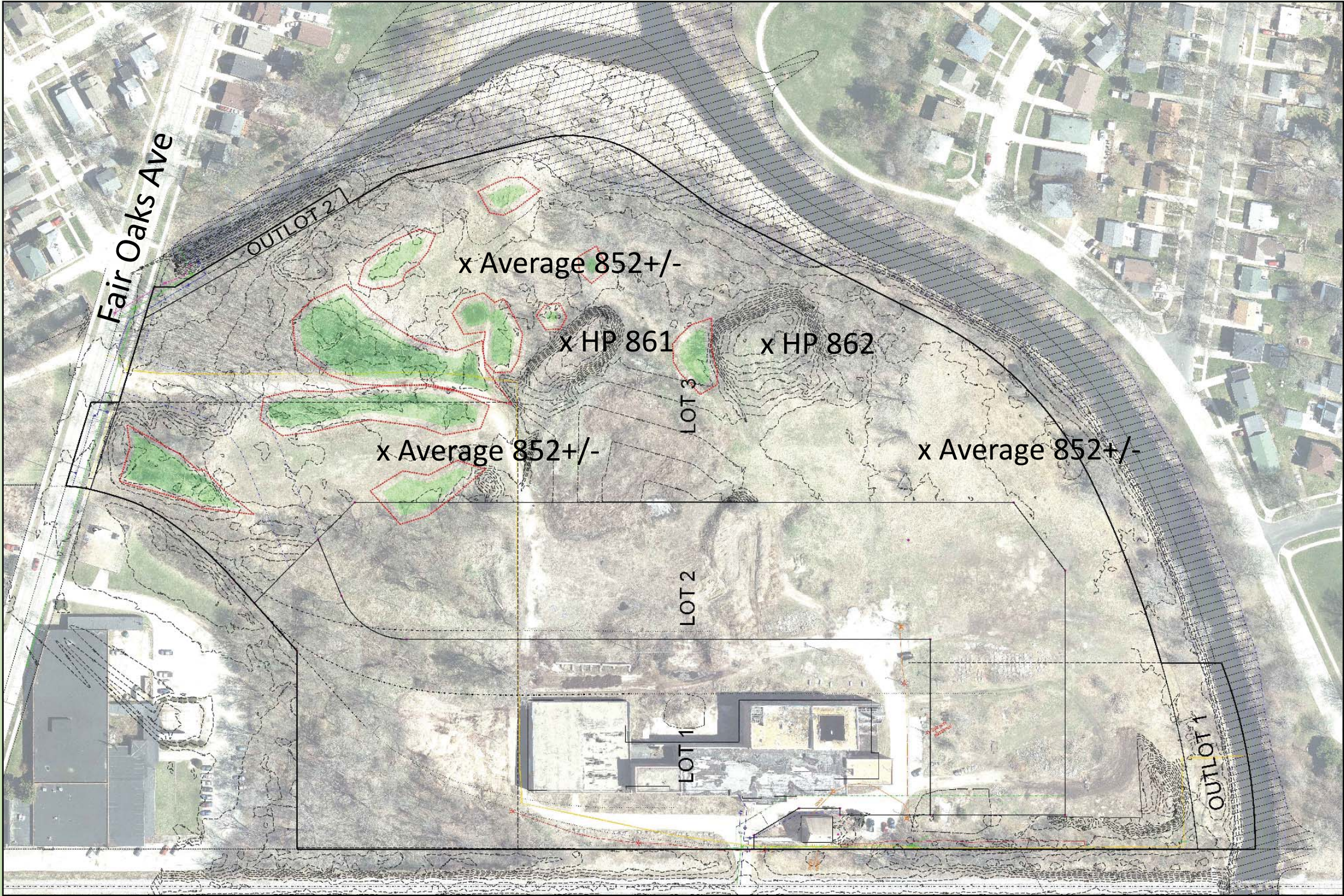
Garver Feed Mill – North Plat 2015



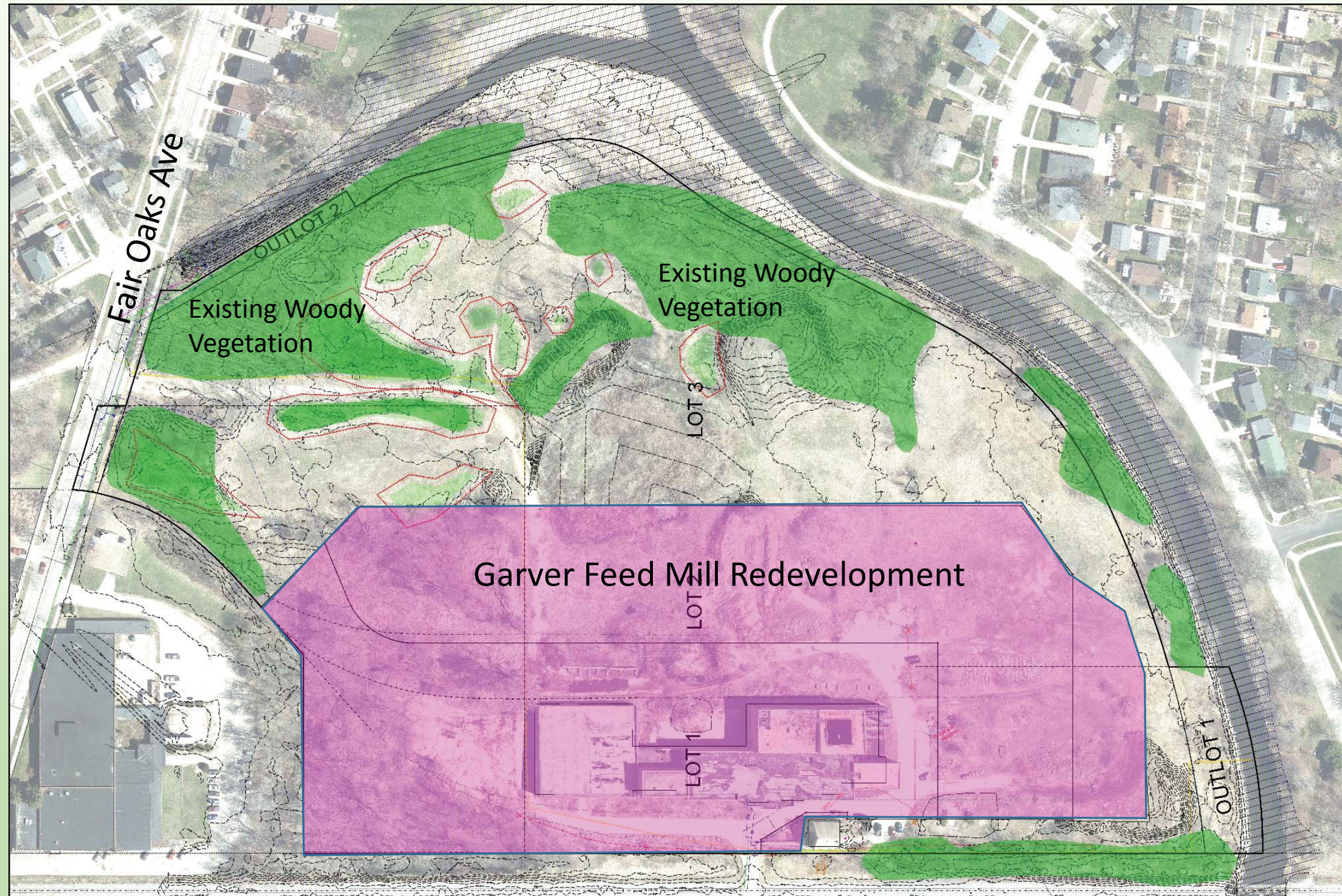
Garver Feed Mill – North Plat



Garver Feed Mill – North Plat



Garver Feed Mill – North Plat



Garver Feed Mill – North Plat



Garver Feed Mill – North Plat



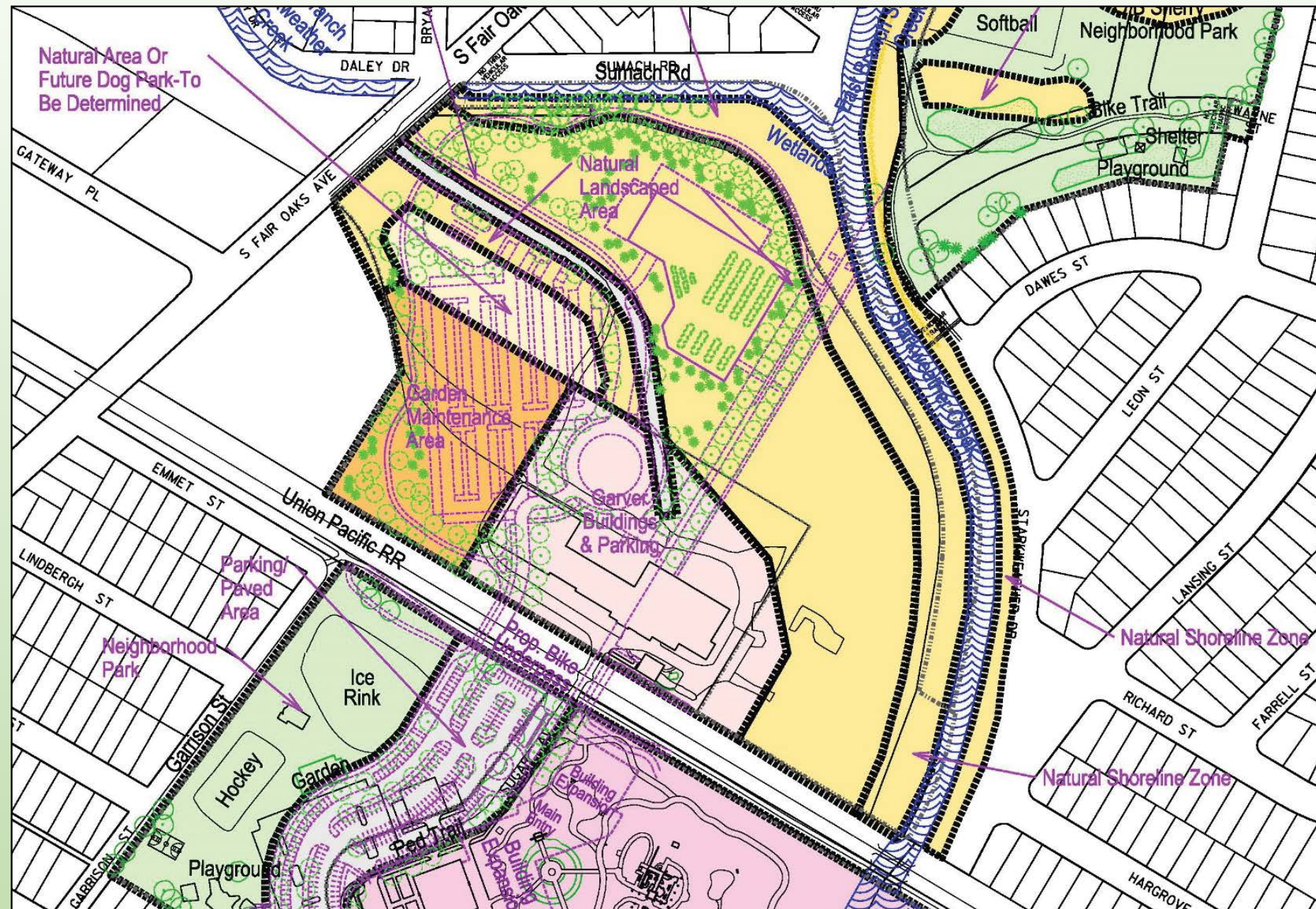
Garver Feed Mill – North Plat



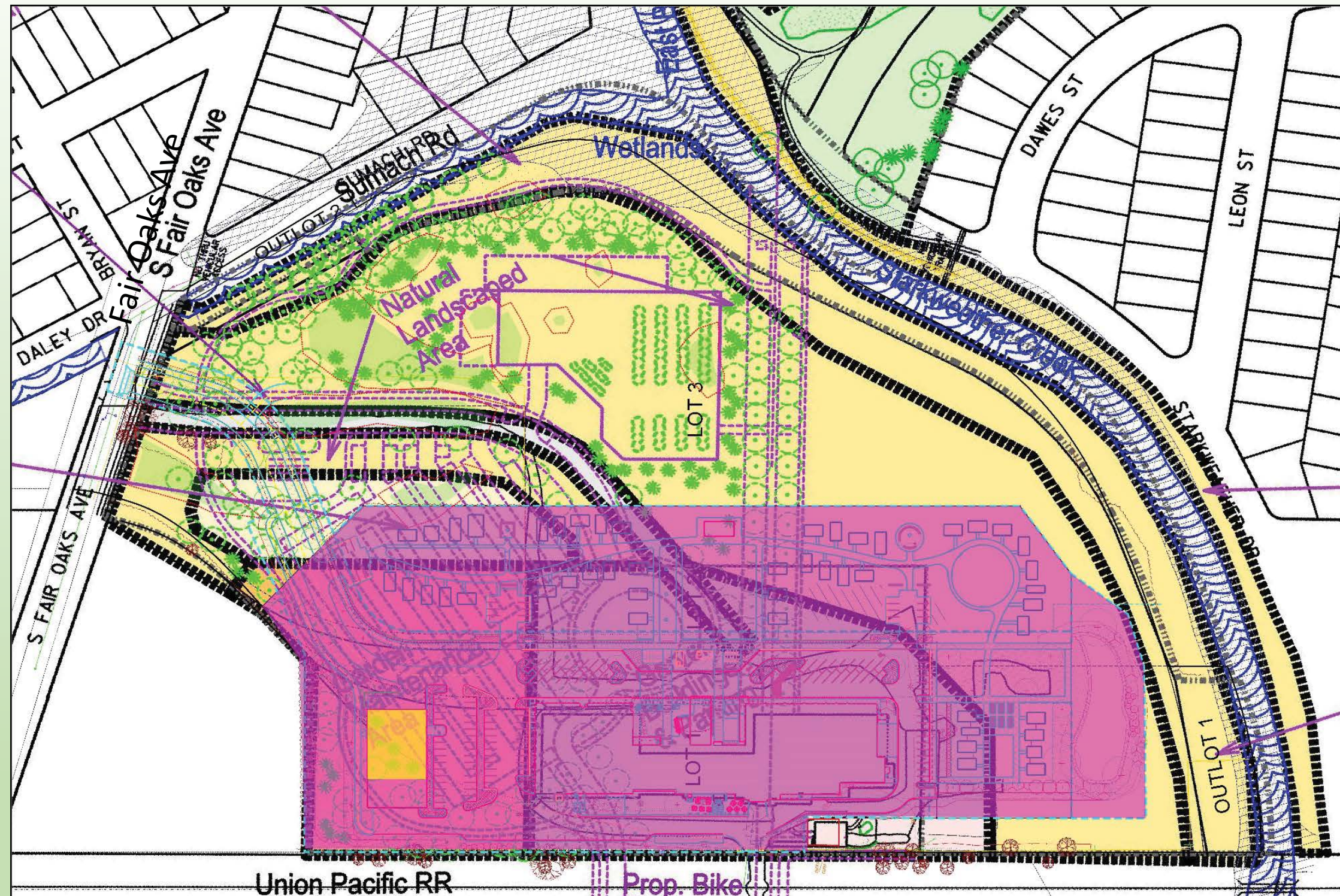
Olbrich Park - Master Plan



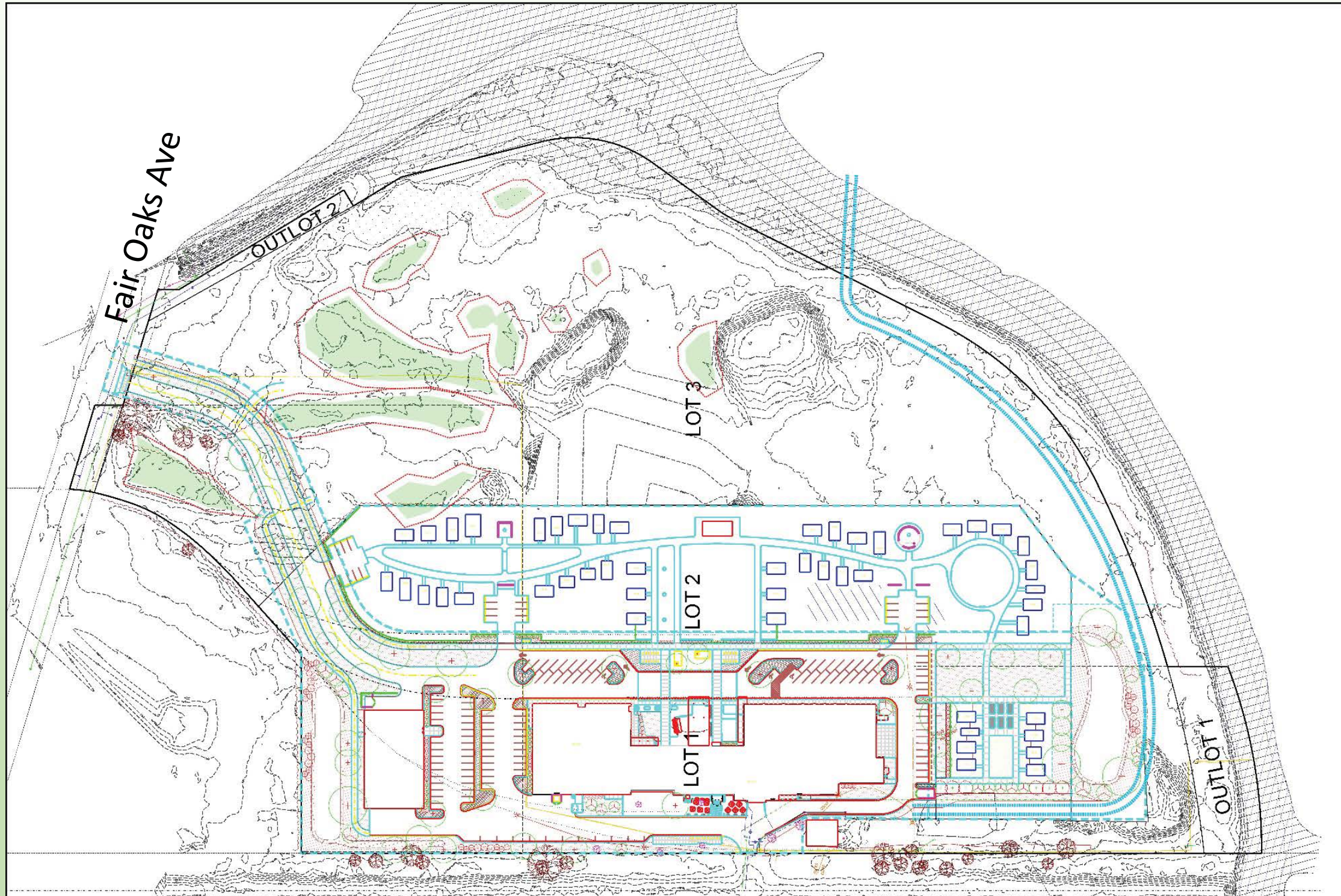
Garver Feed Mill – North Plat Master Plan



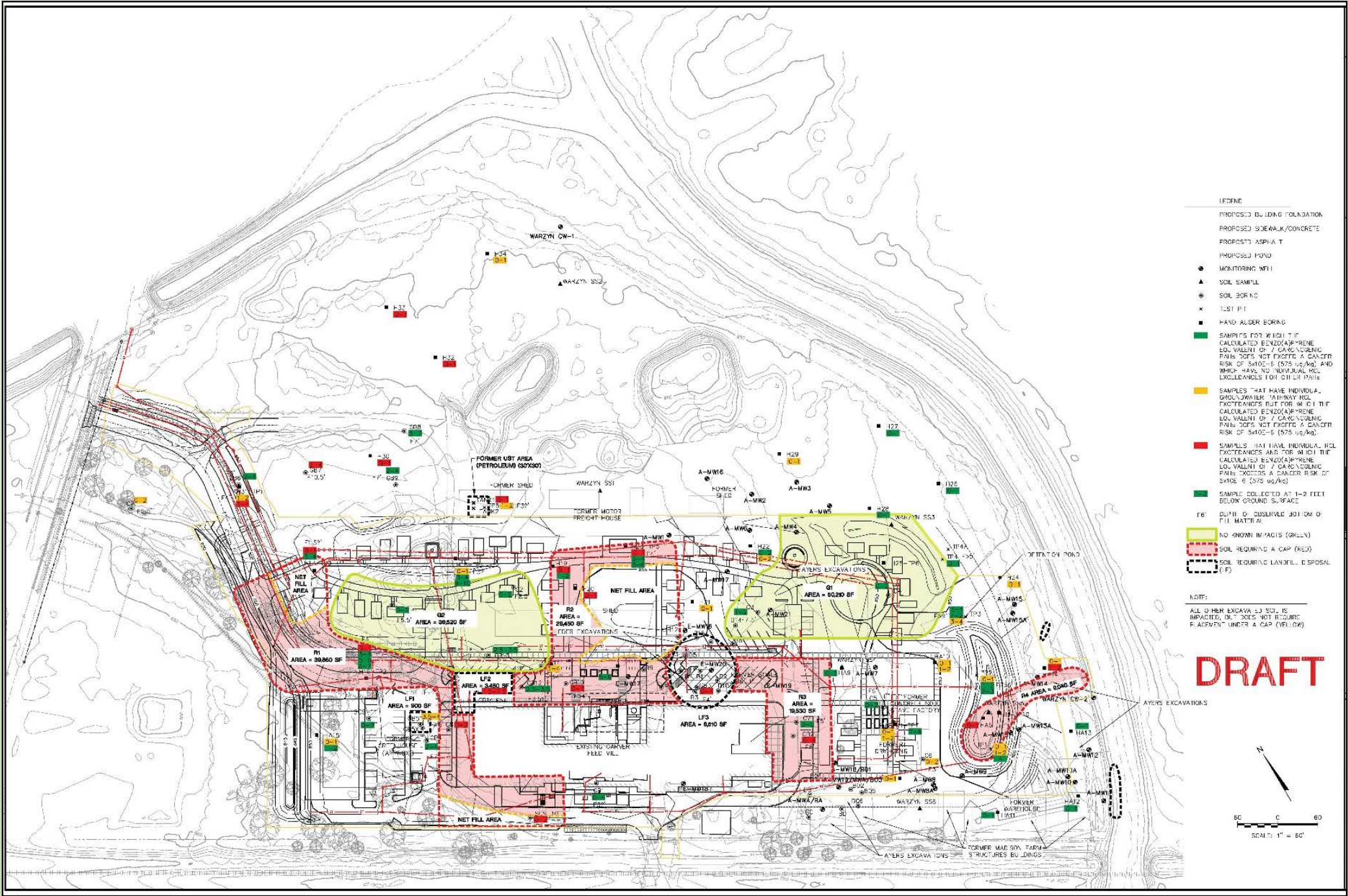
Garver Feed Mill – North Plat Master Plan



Garver Feed Mill – North Plat Bike Path Connection



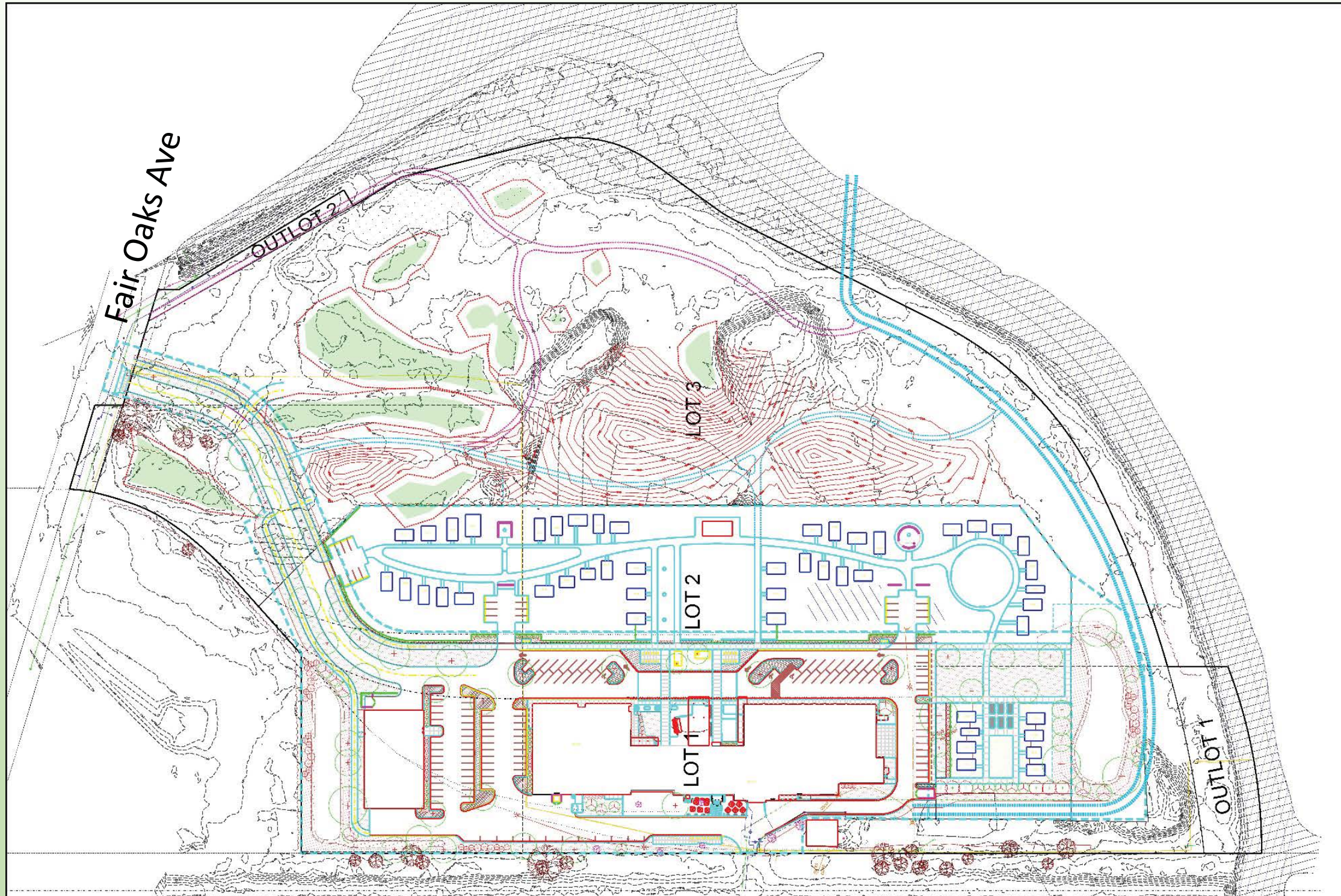
Garver Feed Mill – North Plat



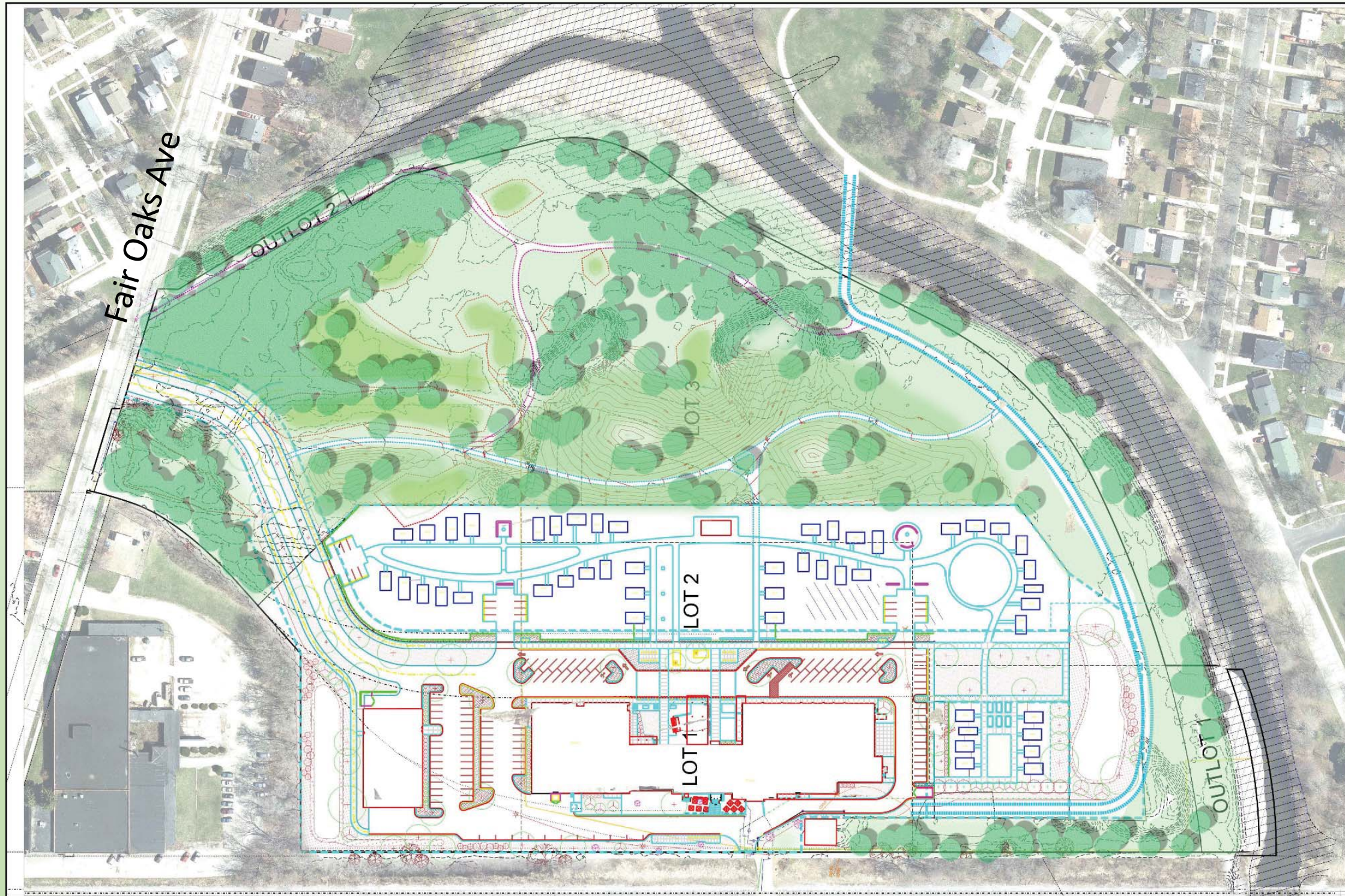
Garver Feed Mill – North Plat



Garver Feed Mill – North Plat Option 1



Garver Feed Mill – North Plat Option 1



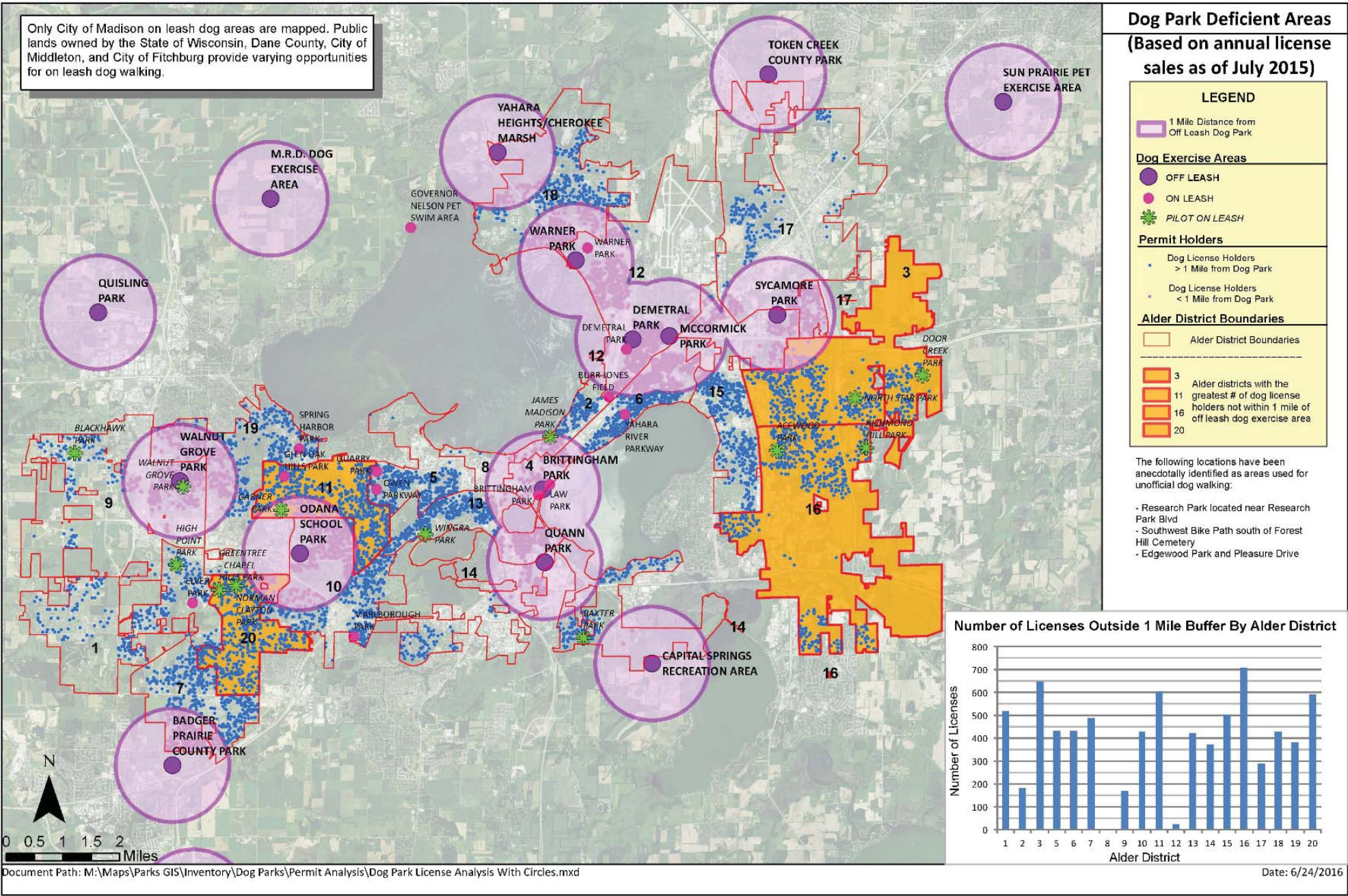
Garver Feed Mill – North Plat Option 1



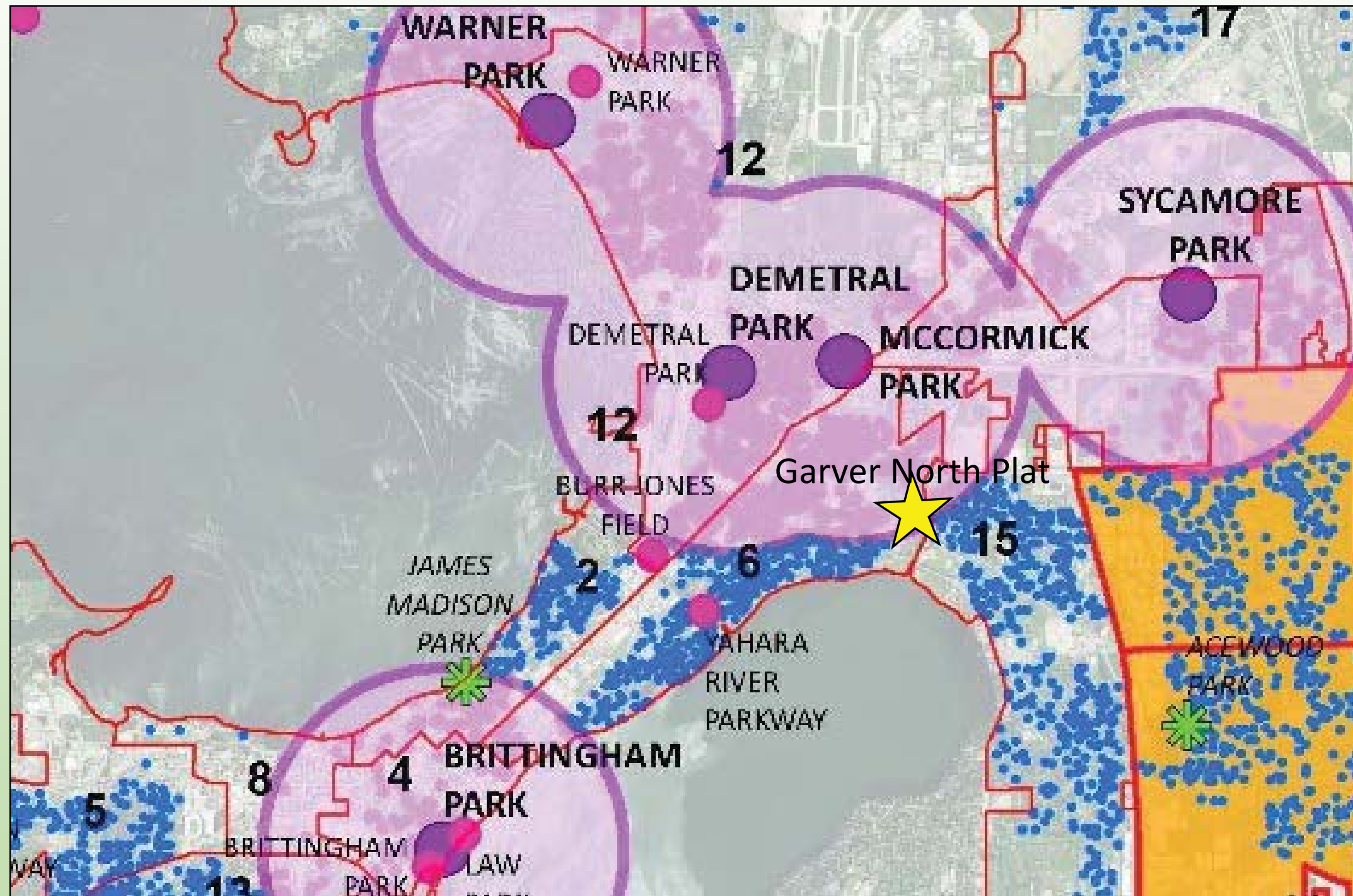
Garver Feed Mill – North Plat



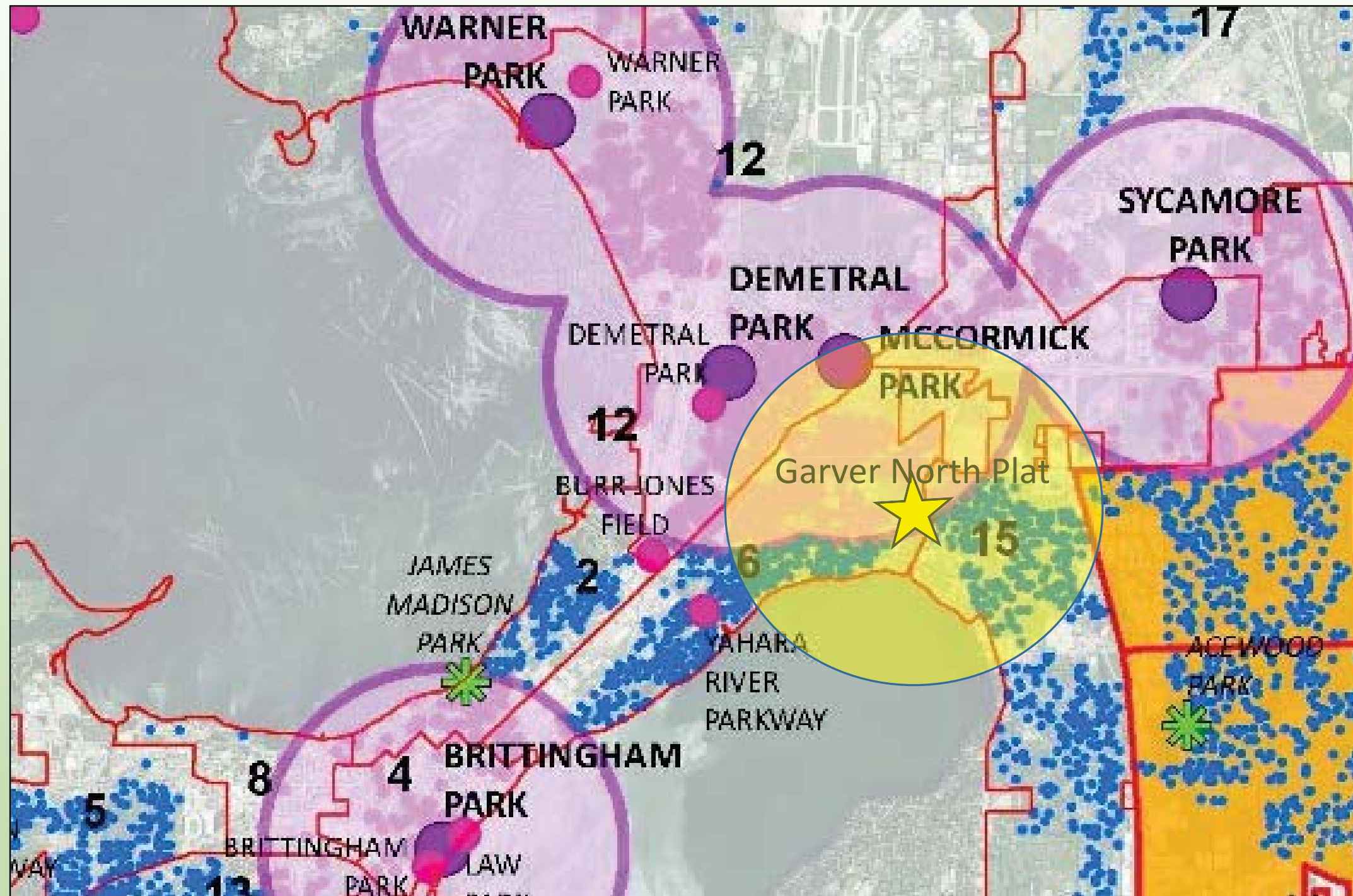
Garver Feed Mill – North Plat



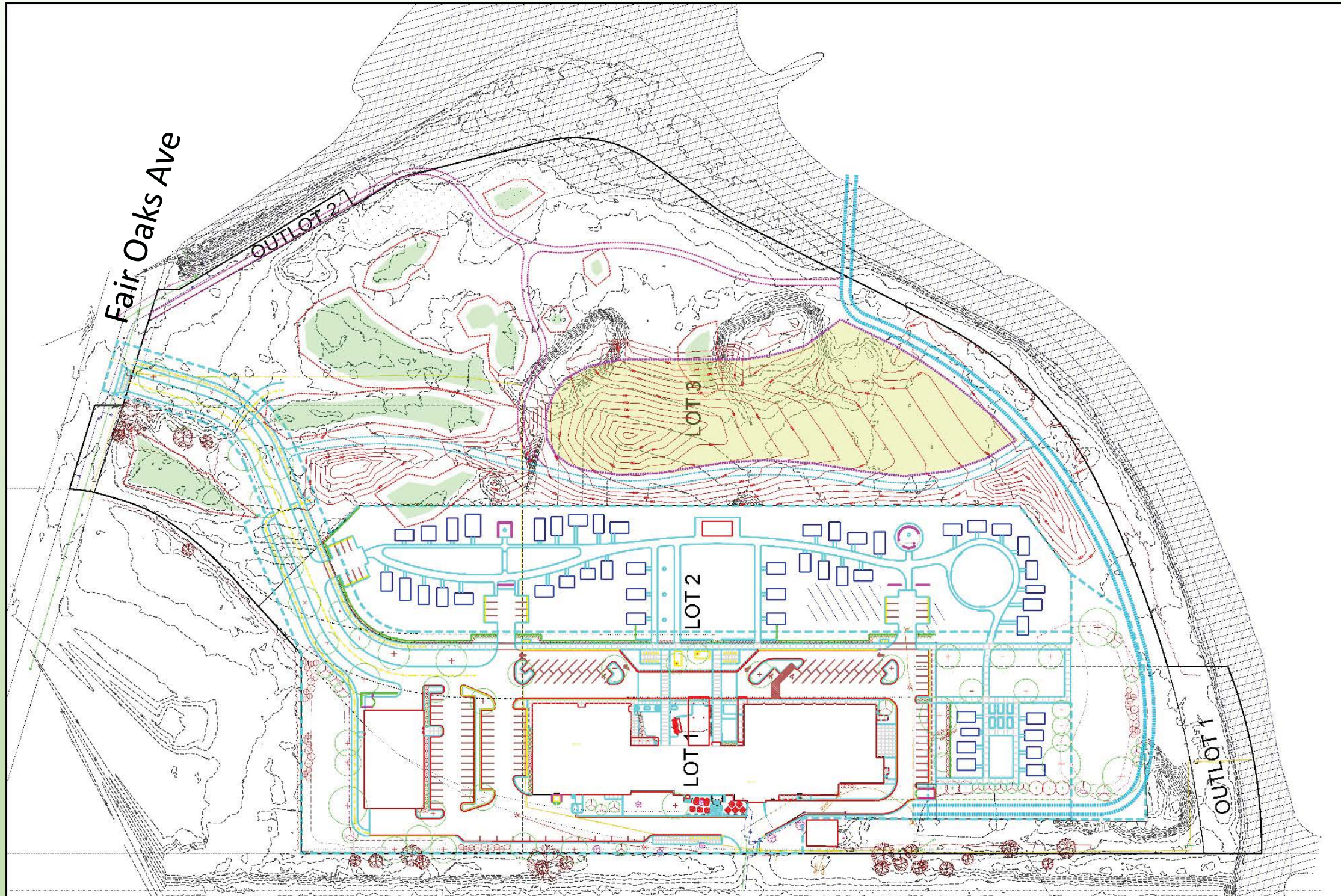
Garver Feed Mill – North Plat



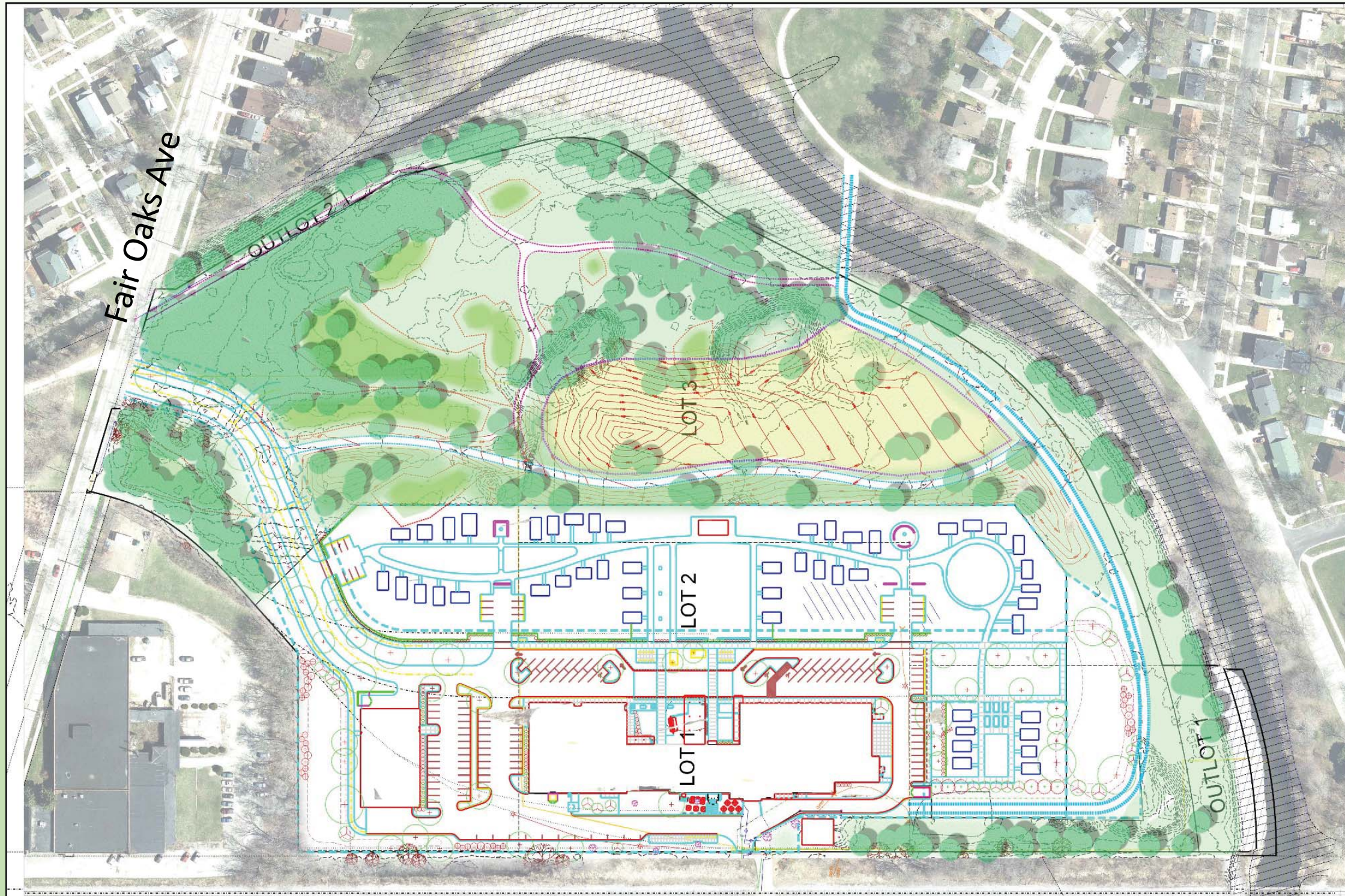
Garver Feed Mill – North Plat



Garver Feed Mill – North Plat Option 2



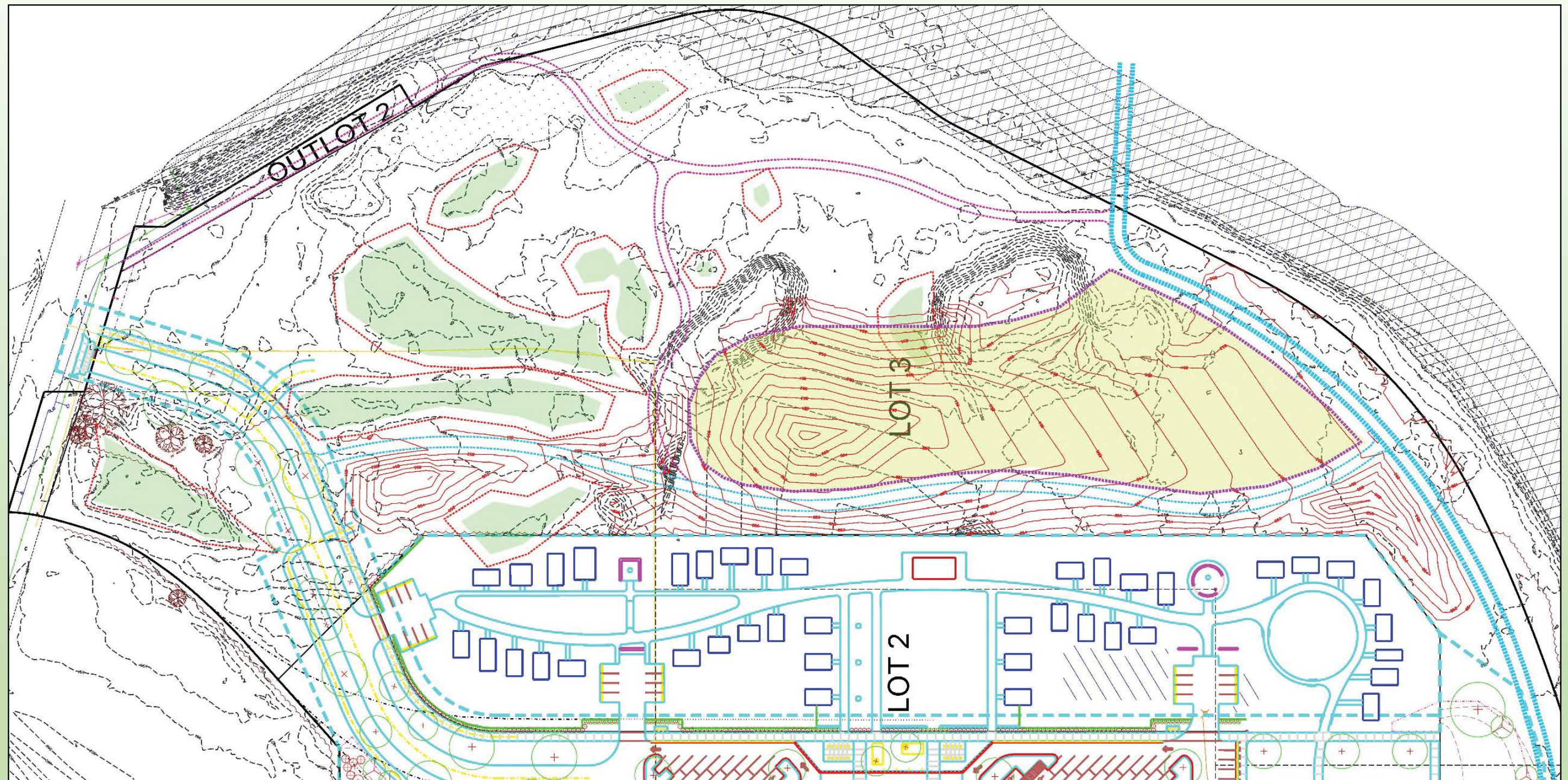
Garver Feed Mill – North Plat Option 2



Garver Feed Mill – North Plat Option 2



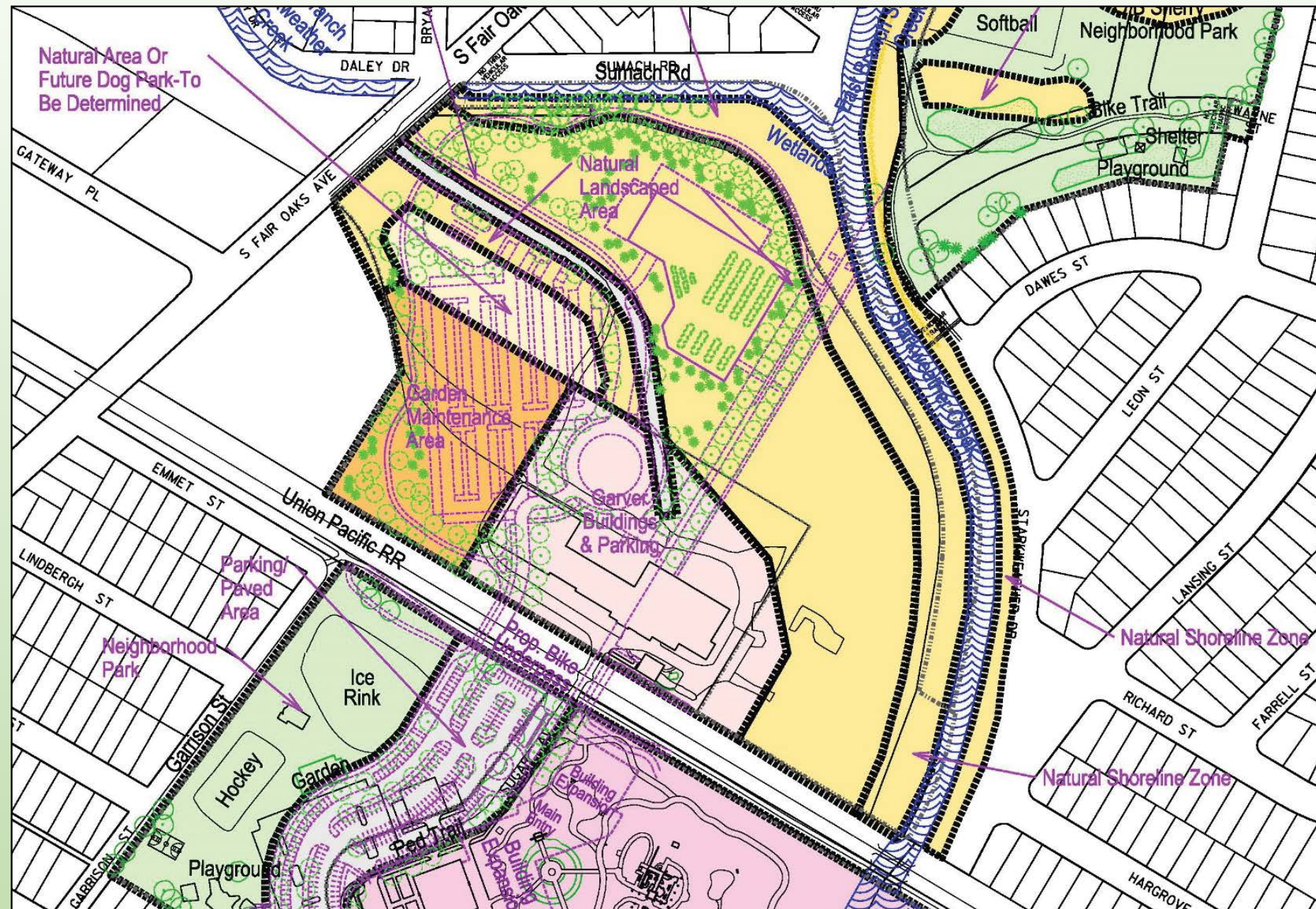
Garver Feed Mill – North Plat Option 2



Garver Feed Mill – North Plat



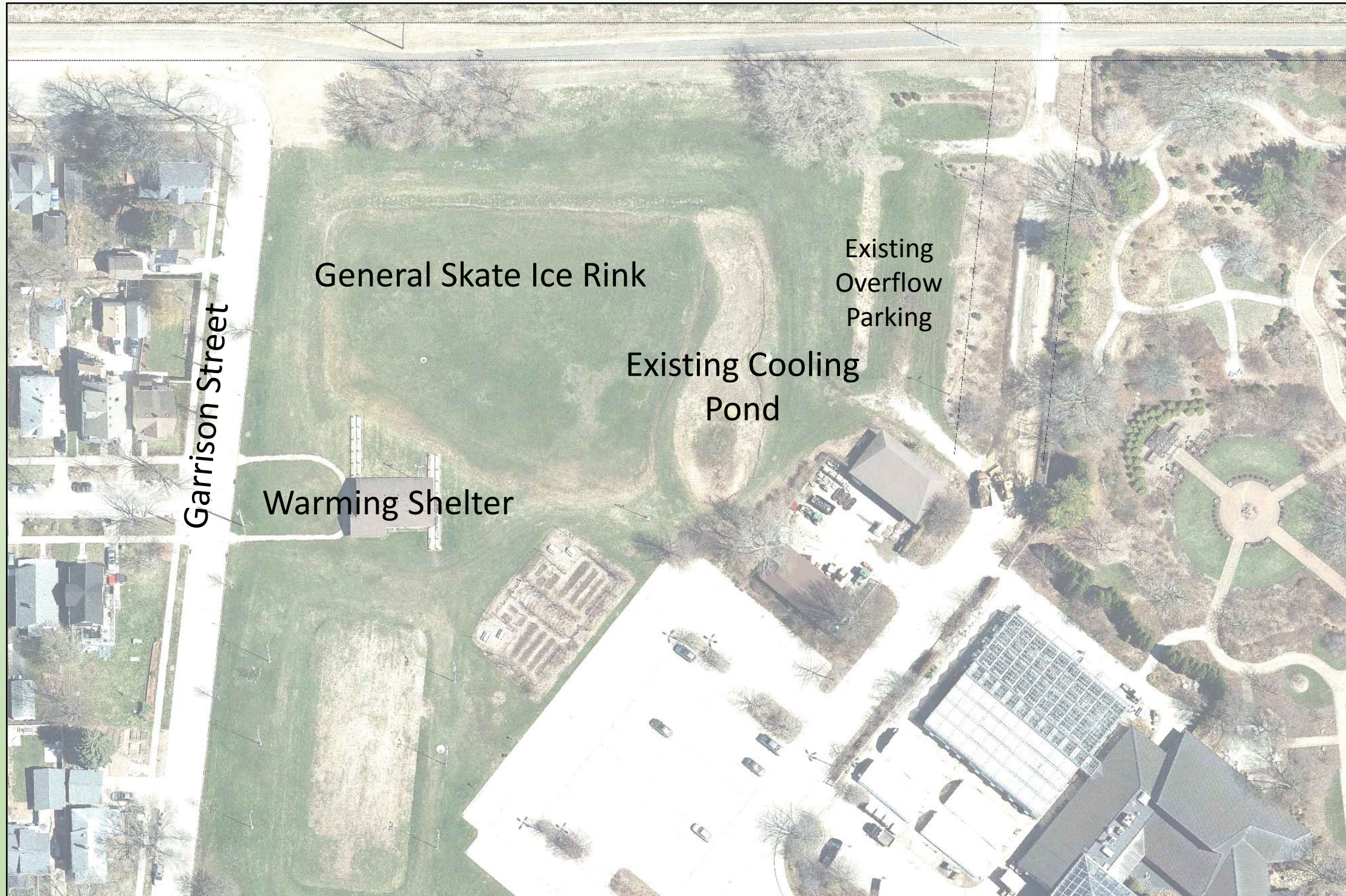
Garver Feed Mill – North Plat Master Plan



Olbrich Botanical Gardens Operations Area



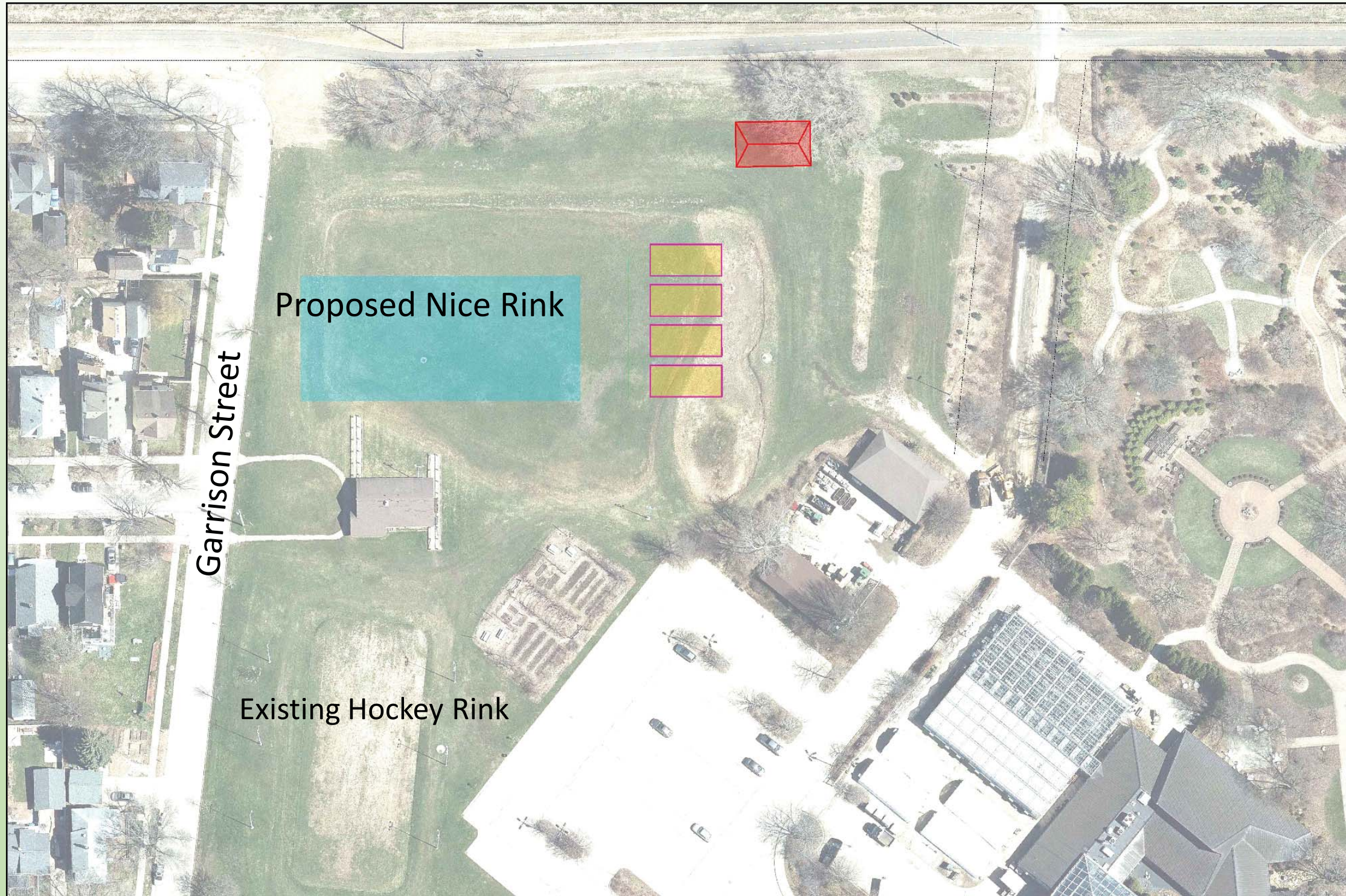
Olbrich Botanical Gardens Operations Area



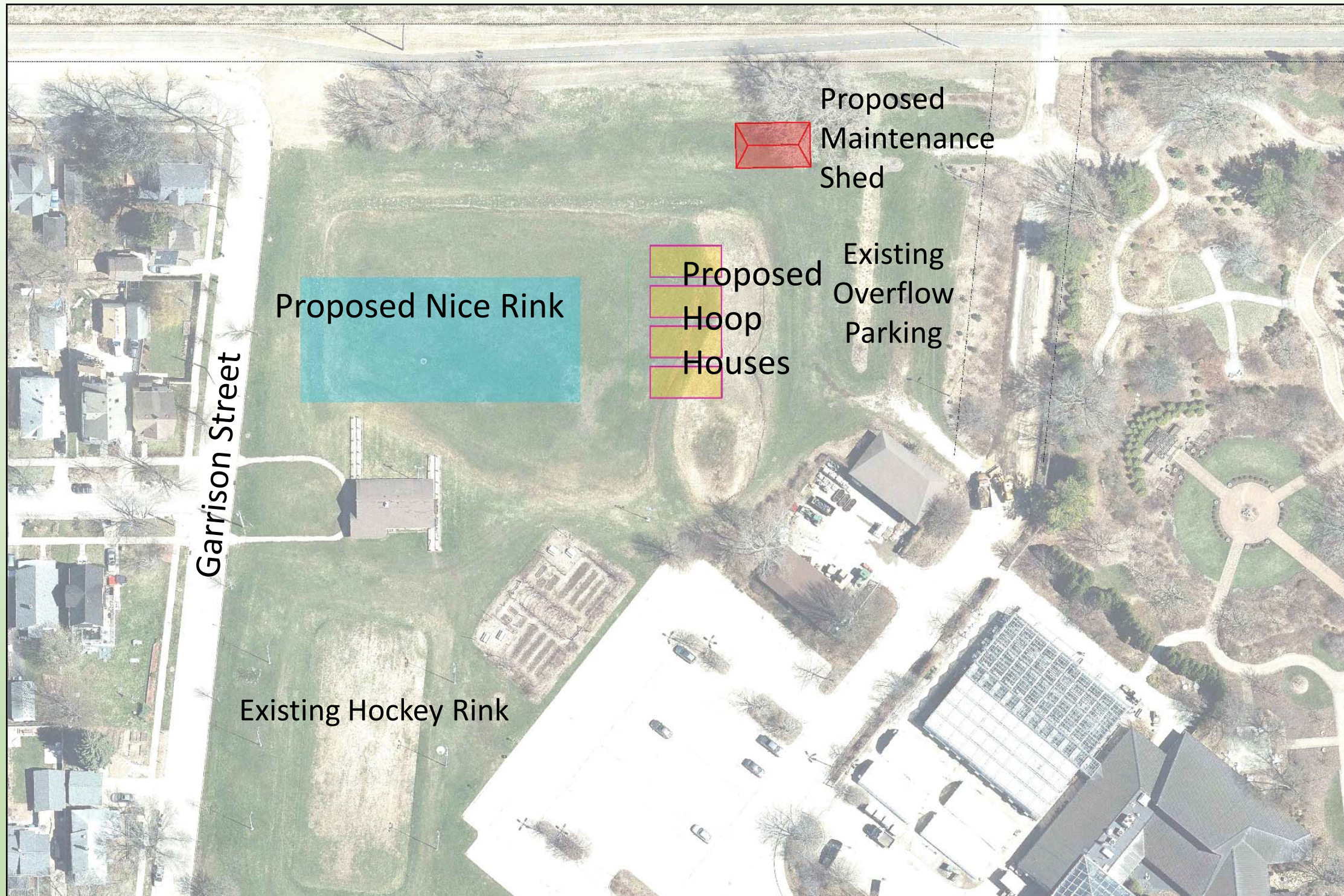
Olbrich Botanical Gardens Operations Area



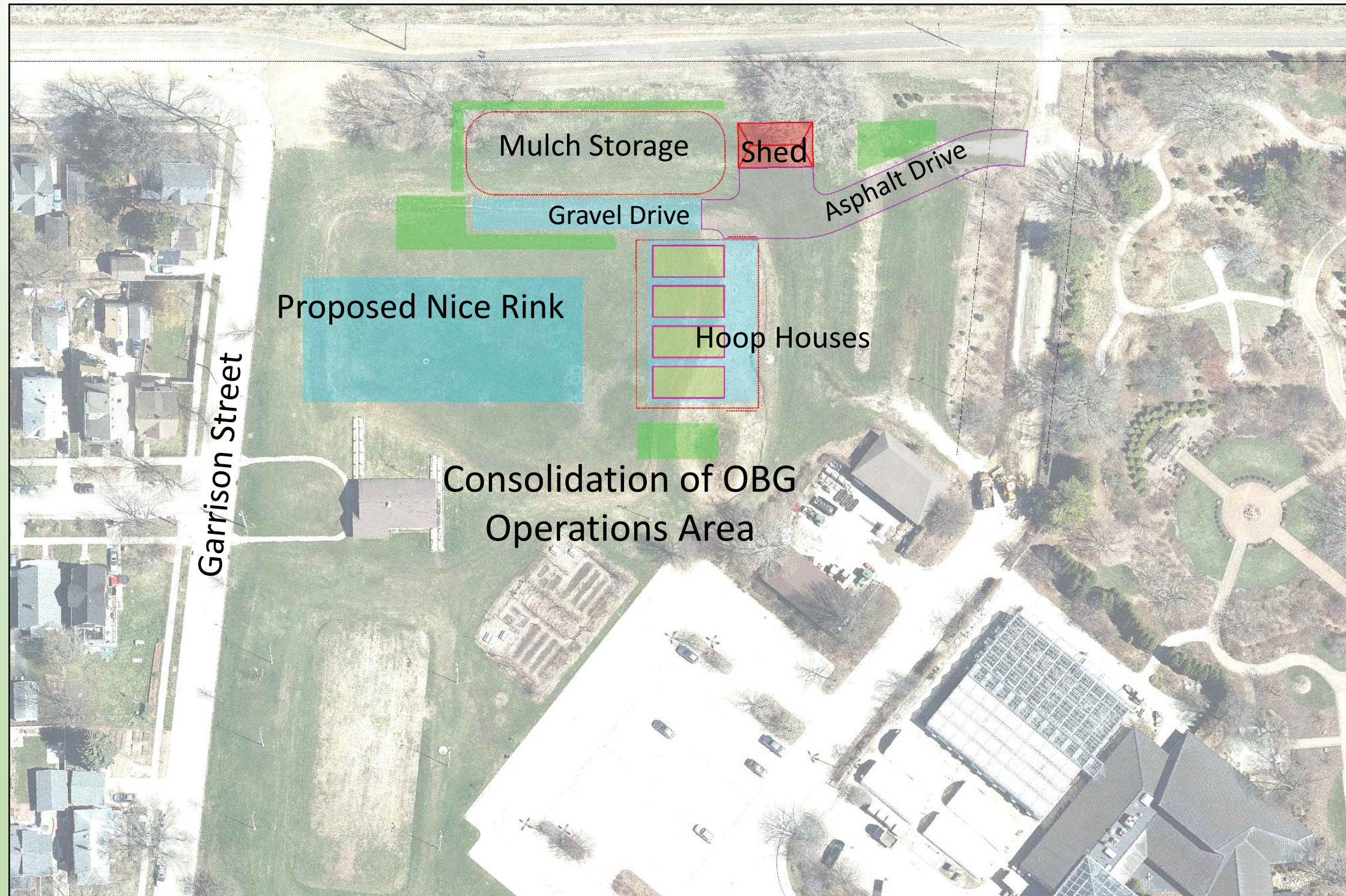
Olbrich Botanical Gardens Operations Area



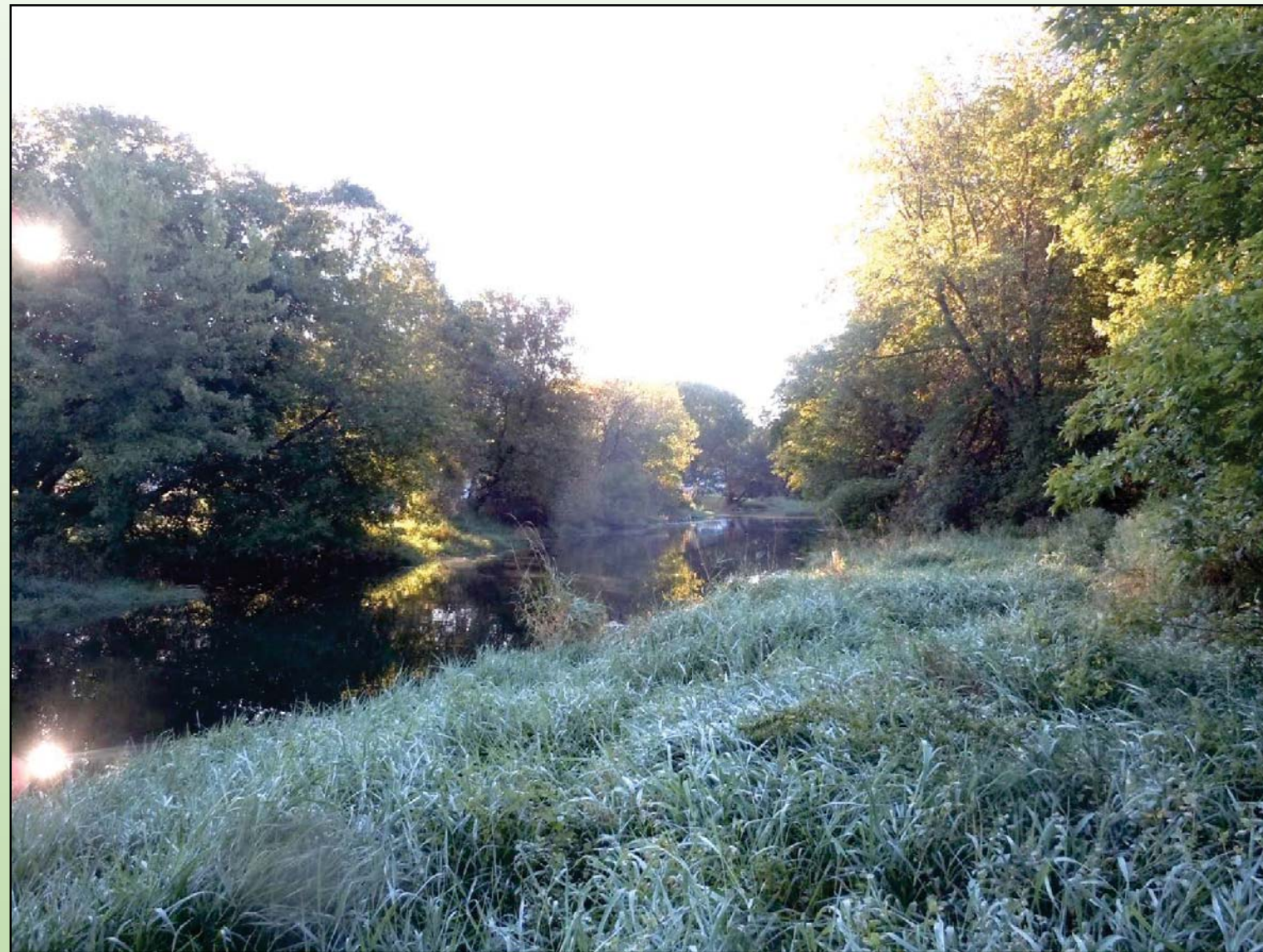
Olbrich Botanical Gardens Operations Area



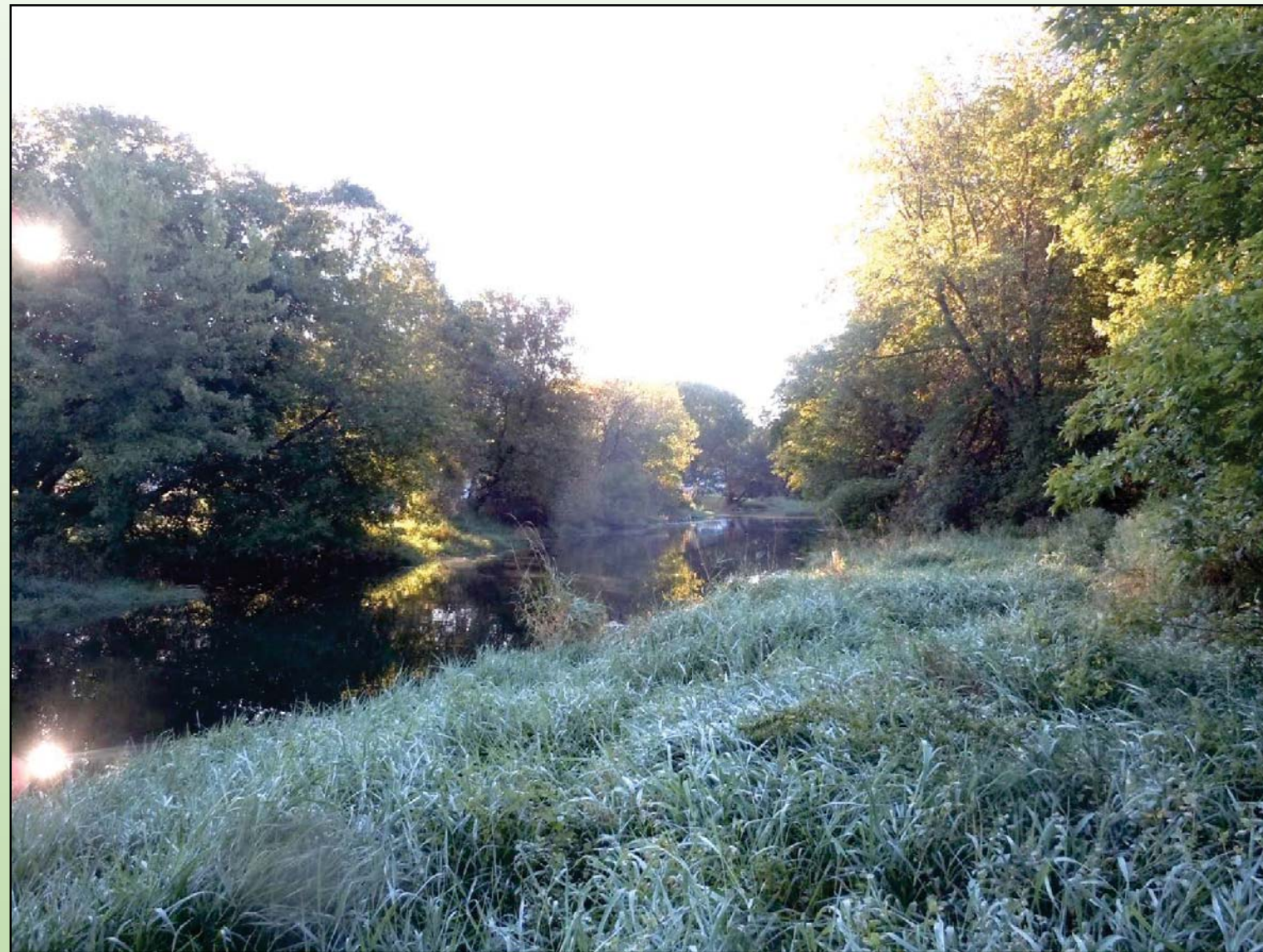
Olbrich Botanical Gardens Operations Area



Garver Feed Mill – North Plat and Olbrich Botanical Gardens Operations Area

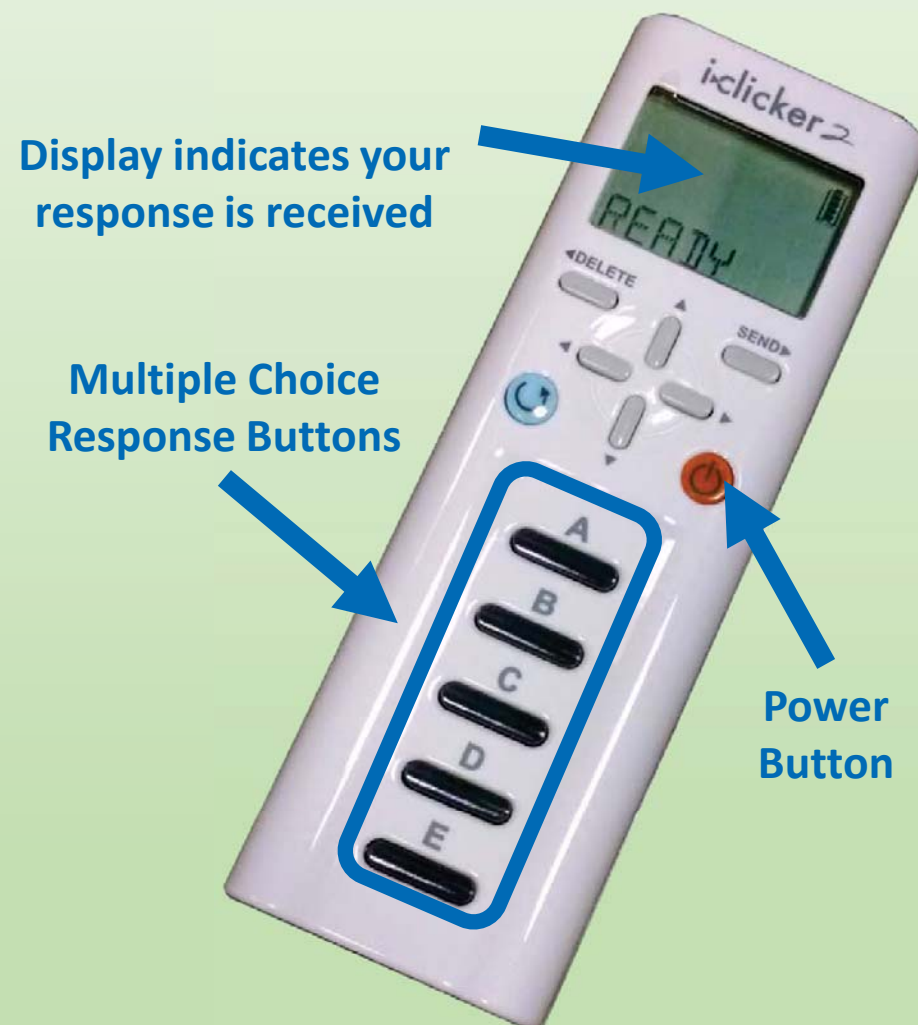


Garver Feed Mill – North Plat and Olbrich Botanical Gardens Operations Area



Clickers – Real Time Polling

- Push orange button to turn on
- When poll is opened, choose response with A-E buttons
- Display will show a “v” when your response is received
- You can change your answer until the poll closes



Troubleshooting:

- Display says “Closed” – Poll is closed
- Clicker isn't working – Push power button to turn off; turn on again
- Clicker still isn't working – push and hold power button for two seconds, then press A twice to reconnect to receiver.
- Clickers turn off after 10 minutes; Push power button to turn back on.



Garver Feed Mill – Option 1



Garver Feed Mill – North Plat and
Olbrich Botanical Gardens Operations Area

Option 1: Potential Natural Area with No Dog Access

A. Strongly support

B. Neutral

C. Strongly oppose

D. Abstain

Garver Feed Mill – North Plat and
Olbrich Botanical Gardens Operations Area

Option 1: Potential Natural Area with On-Leash Dog Access*

*Requires Paved Path

A. Strongly support

B. Neutral

C. Strongly oppose

D. Abstain

Garver Feed Mill – Option 2



Garver Feed Mill – North Plat and
Olbrich Botanical Gardens Operations Area

Option 2: Potential Natural Area with Off-leash Dog Park

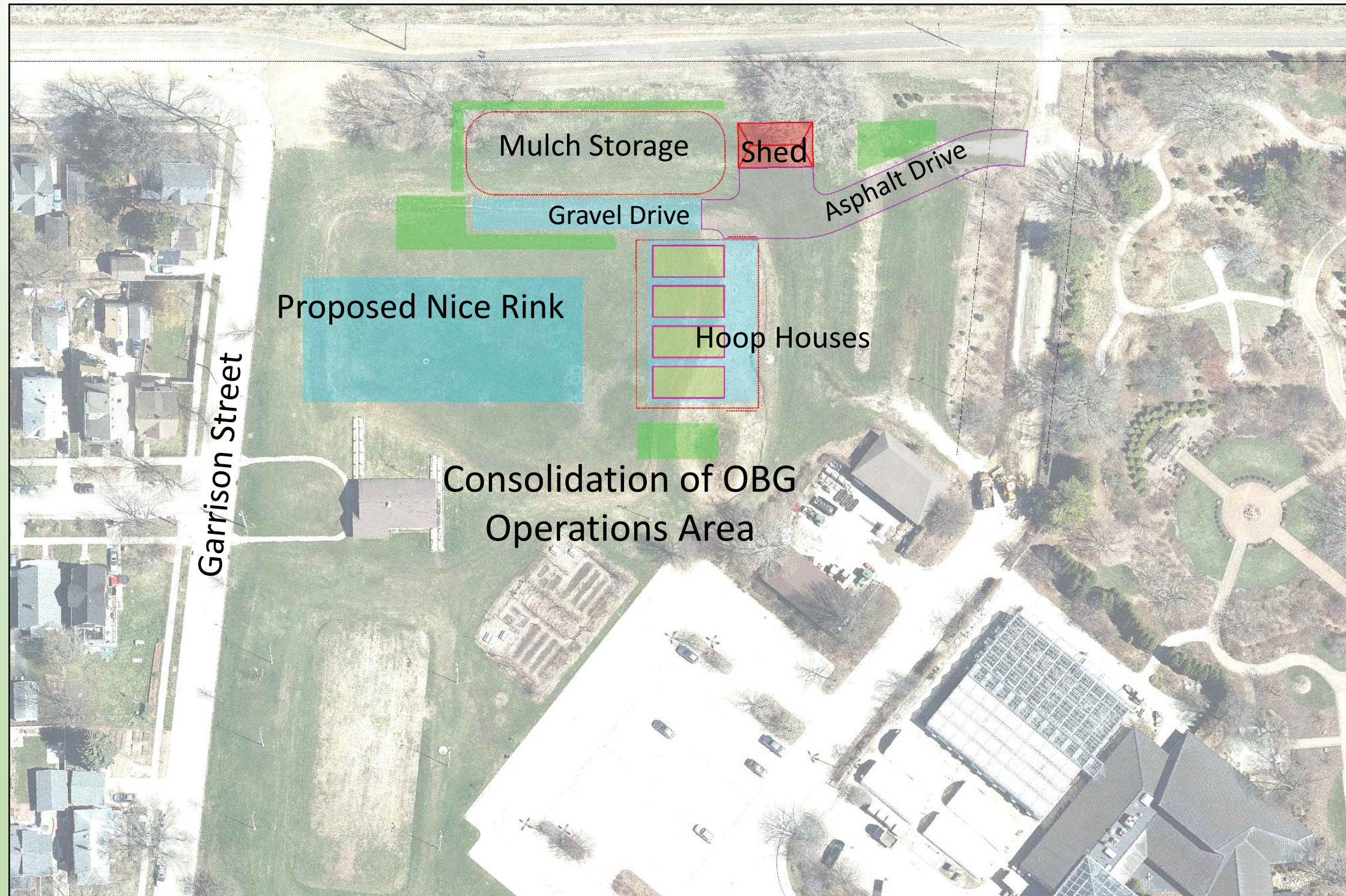
A. Strongly support

B. Neutral

C. Strongly oppose

D. Abstain

Olbrich Botanical Gardens Operations Area



Garver Feed Mill – North Plat and
Olbrich Botanical Gardens Operations Area

Proposed Changes to Land Ice Rink at Olbrich Park

A. Strongly support

B. Neutral

C. Strongly oppose

D. Abstain

Garver Feed Mill – North Plat and
Olbrich Botanical Gardens Operations Area

Proposed Consolidation of OBG Operations Area

A. Strongly support

B. Neutral

C. Strongly oppose

D. Abstain

Comment Period



Give us your feedback!



Don't forget to return
your clicker to us!

