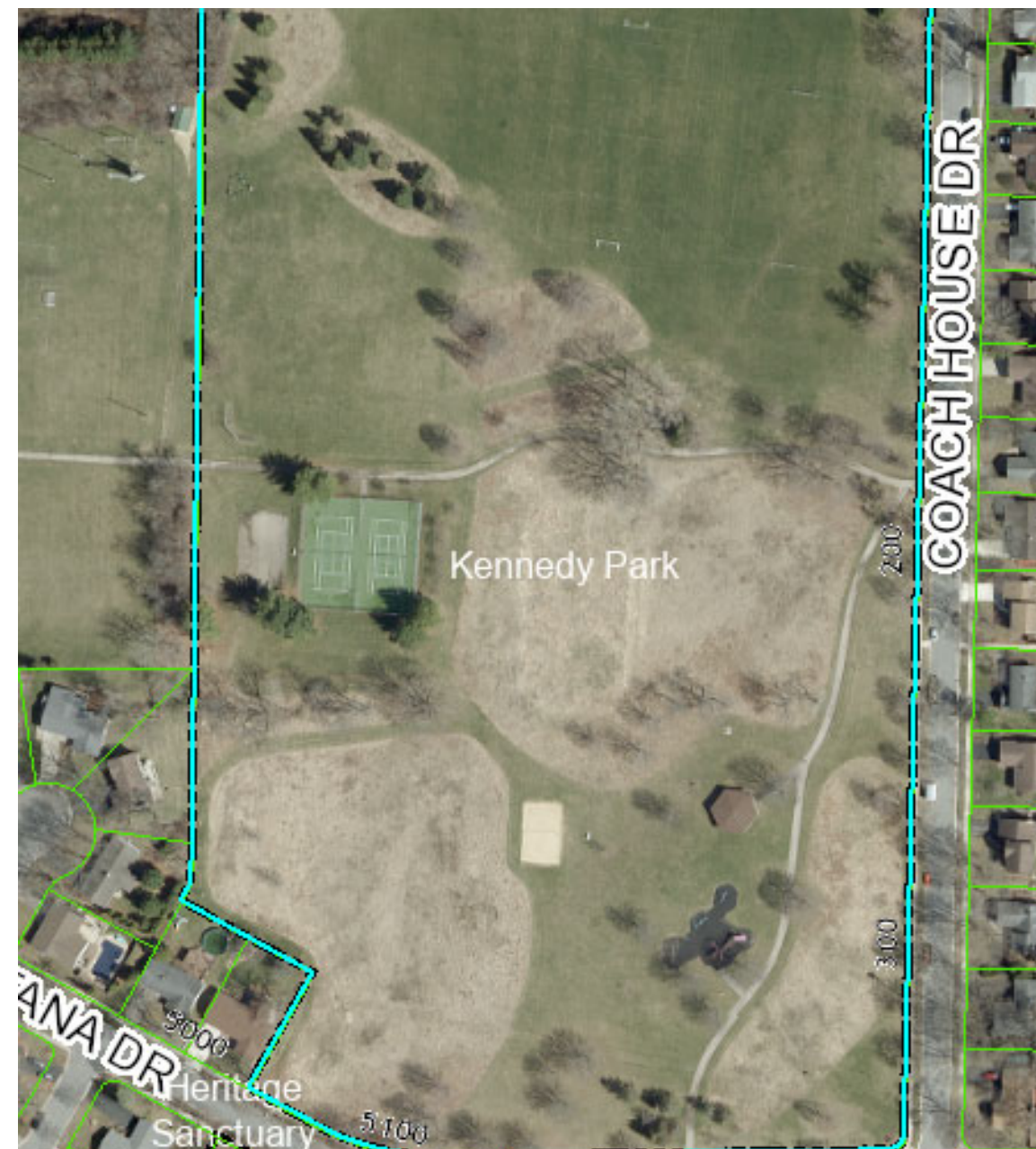


# Kennedy Park - existing playground equipment



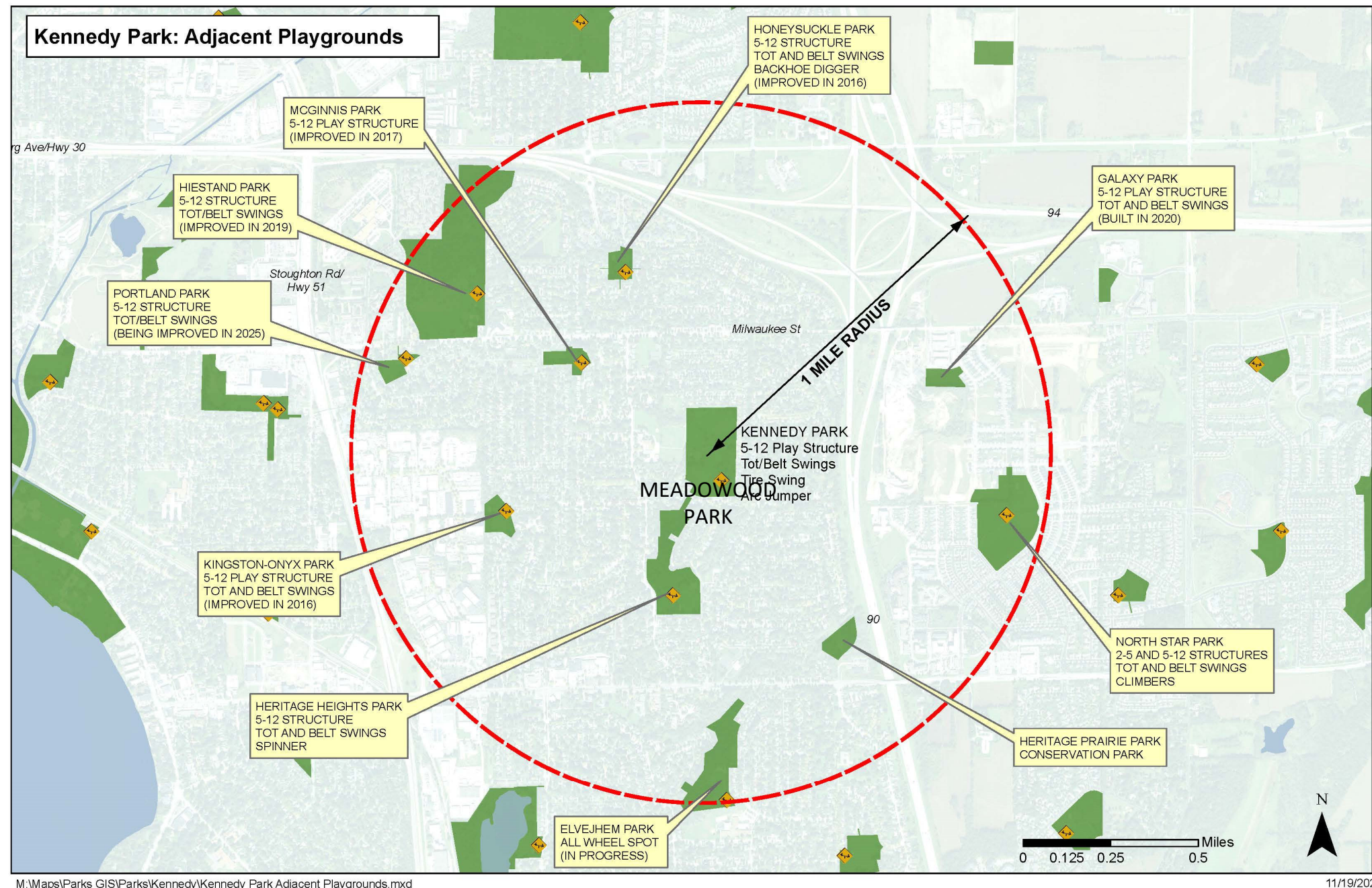


# Kennedy Park- existing conditions plan





# Kennedy Park- adjacent playgrounds





# City of Madison Playground Options

Age Range: 5-12 Years Old

**MADISON  
PARKS**

## Company: GameTime



## Company: Burke





# City of Madison Playground Options

## Age Range: 5-12 Years Old

**MADISON  
PARKS**

**Company: Little Tykes**





# City of Madison Playground Options

Age Range: 2-5 Years Old

**MADISON  
PARKS**

## Company: GameTime



CITY OF  
**MADISON** WISCONSIN

## Company: Burke





# City of Madison Playground Options

## Age Range: 2-5 Years Old

**MADISON  
PARKS**

**Company: Little Tykes**





# City of Madison Playground Options

## Nature Nooks

**MADISON  
PARKS**





# City of Madison Playground Options

## Colors

### Post Colors



### Railing Colors





# City of Madison Playground Options Surfacing

## City of Madison Playground Surfacing Options Comparison

Recycled Shredded Rubber	Engineered Wood Fiber Mulch
<ul style="list-style-type: none"><li>• Meets U.S. Access Board’s ADA Accessibility Guidelines for Play Areas</li><li>• Meets CPSC fall height requirements</li><li>• Softer play surface material</li><li>• Provides alternative use for recycled tires</li><li>• Sandalwood/brown color-coated to reduce heat impact compared to non-coated black recycled rubber</li><li>• Higher initial cost, lower maintenance cost</li><li>• Needs to be topped off every 5 years depending on site conditions and use</li><li>• Non-biodegradable</li><li>• Thaws fast, playgrounds available throughout the year</li></ul>	<ul style="list-style-type: none"><li>• Meets U.S. Access Board’s ADA Accessibility Guidelines for Play Areas</li><li>• Meets CPSC fall height requirements</li><li>• Not as soft as recycled shredded rubber</li><li>• Created by the City from fallen trees and limbs that would otherwise be chipped for mulch</li><li>• More likely to get mold and mildew spores</li><li>• Lower initial cost, higher maintenance cost</li><li>• Needs to be topped off every 1 to 3 years depending on site conditions and use</li><li>• Biodegrades</li><li>• Thaws slowly, playground use limited during winter conditions</li></ul>



Waltham Park- Rubber



Dudgeon School Park- Wood



# City of Madison Playgrounds Fencing Example

**MADISON  
PARKS**



**OCEAN ROAD PARK**



**Please plan on joining Madison Parks for the second meeting for the playground replacement for Kennedy Park, where we will be reviewing and discussing proposed playground designs.**

**Next Playground Meeting (via Zoom): **Proposed for Wednesday, January 15, 2025****

**Additional information related to this project is posted on the Parks Project Portal, here:  
<https://www.cityofmadison.com/parks/projects/kennedy-park-playground-improvements>**

**Contact Kate Kane, project manager, with additional questions or comments.  
(608) 261-9671 or [kkane@cityofmadison.com](mailto:kkane@cityofmadison.com)**

**If the neighborhood is interested in fundraising, the goal must be established by: 1/3/2025  
85% of the total fundraising goal must be received by Madison Parks Foundation by: 3/31/2025**