



MADISON SENIOR CENTER COURTYARD PROJECT

Public Information Meeting - #2

6/23/2022

THIS MEETING WILL BE AUTOMATICALLY RECORDED



MEET THE TEAM



ABBIE MOILIEN

Saiki Design – Landscape
Architect, Project
Manager



CHRIS SINA

Saiki Design – Landscape
Architect, Construction
Specialist



SAIGE HENKEL

Saiki Design – Landscape
Designer



MIKE STURM

City of Madison Parks –
Landscape Architect, City
Project Manager

AGENDA

PROJECT OVERVIEW & PROGRESS

Review from previous Public Information Meeting
and progress made since

SUMMARY OF COMMUNITY SURVEY & VISUAL PREFERENCE SURVEY RESULTS

Overview of all survey and
public feedback

INITIAL CONCEPT DESIGNS

Visual presentation of courtyard
design options

COMMENTS & QUESTIONS

Comments and questions from
the community

WRAP UP

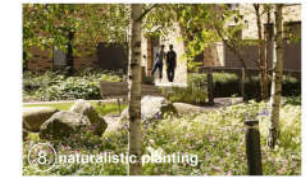
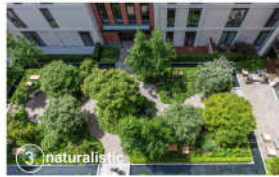
Wrap up meeting and discuss
next steps

The background image shows a multi-story brick building, identified as the Madison Senior Center, with a courtyard in the foreground. The courtyard features a paved area, a grassy patch, and a wooden bench. A large, bare tree stands in the center-left. The building has many windows and a red awning over the entrance. The text "PROJECT OVERVIEW & PROGRESS" is overlaid in a white box in the center of the image.

PROJECT OVERVIEW & PROGRESS

REVIEW FROM PREVIOUS PUBLIC INFORMATION MEETING

- HISTORY OF THE PLAZA & TRANSITION TO PARKS DIVISION
- REVIEW OF CURRENT SITE CONDITIONS
- VISUAL PREFERENCE SURVEY

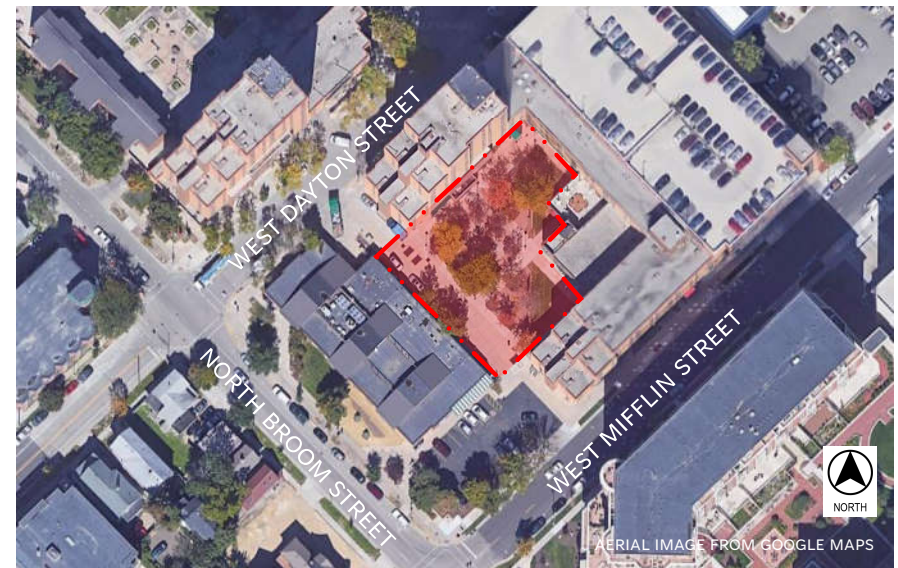
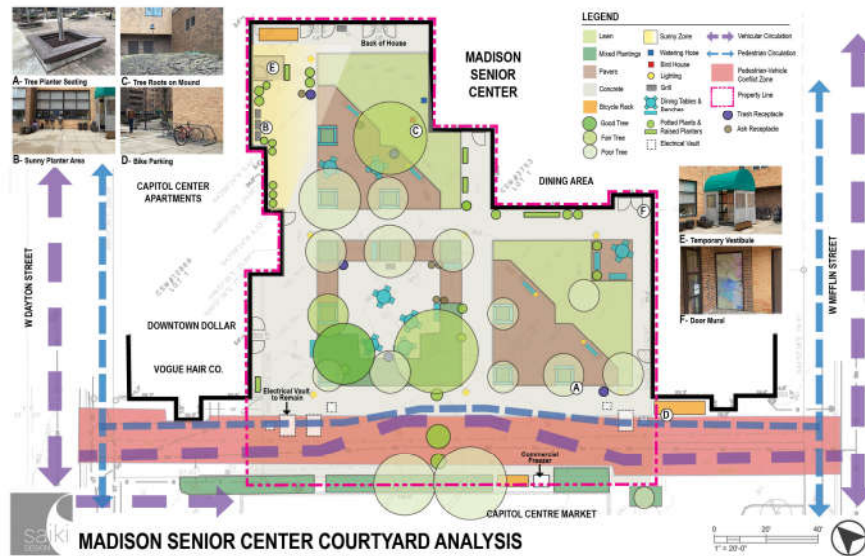


2022

MADISON SENIOR CENTER COURTYARD

PROGRESS TO DATE

- CONTINUED SITE ANALYSIS
- ONLINE COMMUNITY SURVEY
- CONCEPT DEVELOPMENT





SUMMARY OF COMMUNITY SURVEY RESULTS

KEY TAKEAWAYS

CURRENT CONCERNS:

- PHYSICAL ACCESSIBILITY IS A HIGH PRIORITY
- LIGHTING, SAFETY, AND SECURITY UPDATES ARE NEEDED
- ALLEY USE AS A 'SNEAK-THROUGH' IMPACTS PEDESTRIAN SAFETY
- PET WASTE MANAGEMENT WILL NEED TO BE INTEGRATED INTO DESIGN
- HIGHLY INTERACTIVE AMENITIES COULD CAUSE NOISE DISTURBANCES TO RESIDENTS
- LACK OF QUALITY AMENITIES AND USABLE GREENSPACE DISCOURAGES USE BY COMMUNITY MEMBERS

KEY TAKEAWAYS

FUTURE DESIRES:

- USABLE GREENSPACE AND ROBUST TREE CANOPY
- QUALITY SEATING OPTIONS (MOVEABLE AND FIXED SEATING WITH BACKS)
- PASSIVE OPEN SPACE WITH OPPORTUNITIES FOR PLAY, ACTIVITIES, AND PROGRAMMED EVENTS
- IMPROVED SIGNAGE AND WAYFINDING
- GENERAL MATERIAL AND PAVING UPDATES FOR AESTHETICS AND ACCESSIBILITY
- PUBLIC SPACES FOR EVENTS AND INTIMATE SPACES FOR RELAXING, GATHERING, AND COOKOUTS

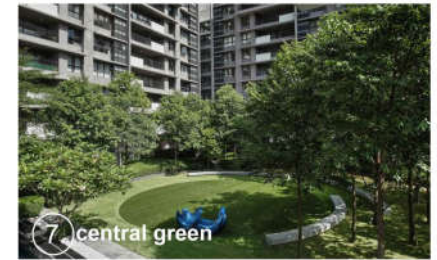
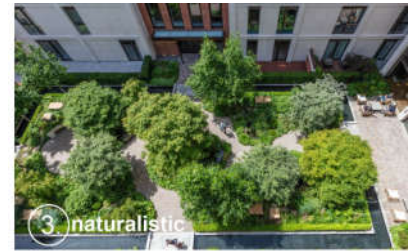
VISUAL PREFERENCE SURVEY RESULTS

① COURTYARD FEEL
NATURALISTIC AND SIMPLE

② LANDSCAPING
CENTRAL GREEN SPACE, TREE CANOPY AND
GROUND COVER PLANTINGS

③ SITE ELEMENTS
OUTDOOR GRILLS AND FIXED SEATING

④ ACTIVITIES
FLEXIBLE SPACES FOR ACTIVITIES LIKE MOVIE NIGHT
AND FOOD TRUCKS





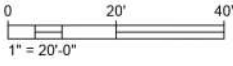
INITIAL CONCEPT DESIGNS

CONCEPT 1:
ORGANIC
NATURALISTIC
PASSIVE



1

MADISON SENIOR CENTER COURTYARD - CONCEPT 1
SCALE: 1" = 20'-0"
MADISON SENIOR CENTER COURTYARD



CONCEPT 1: ORGANIC | NATURALISTIC | PASSIVE



PERSPECTIVE 1: AERIAL VIEW FROM CAPITOL CENTRE MARKET

CONCEPT 1: ORGANIC | NATURALISTIC | PASSIVE



PERSPECTIVE 2: AERIAL VIEW FROM MADISON SENIOR CENTER

CONCEPT 1: ORGANIC | NATURALISTIC | PASSIVE



PERSPECTIVE 3: PARK ENTRANCE FROM WEST MIFFLIN STREET

CONCEPT 1: ORGANIC | NATURALISTIC | PASSIVE



PERSPECTIVE 4: PARK ENTRANCE FROM WEST DAYTON STREET

CONCEPT 1: ORGANIC | NATURALISTIC | PASSIVE



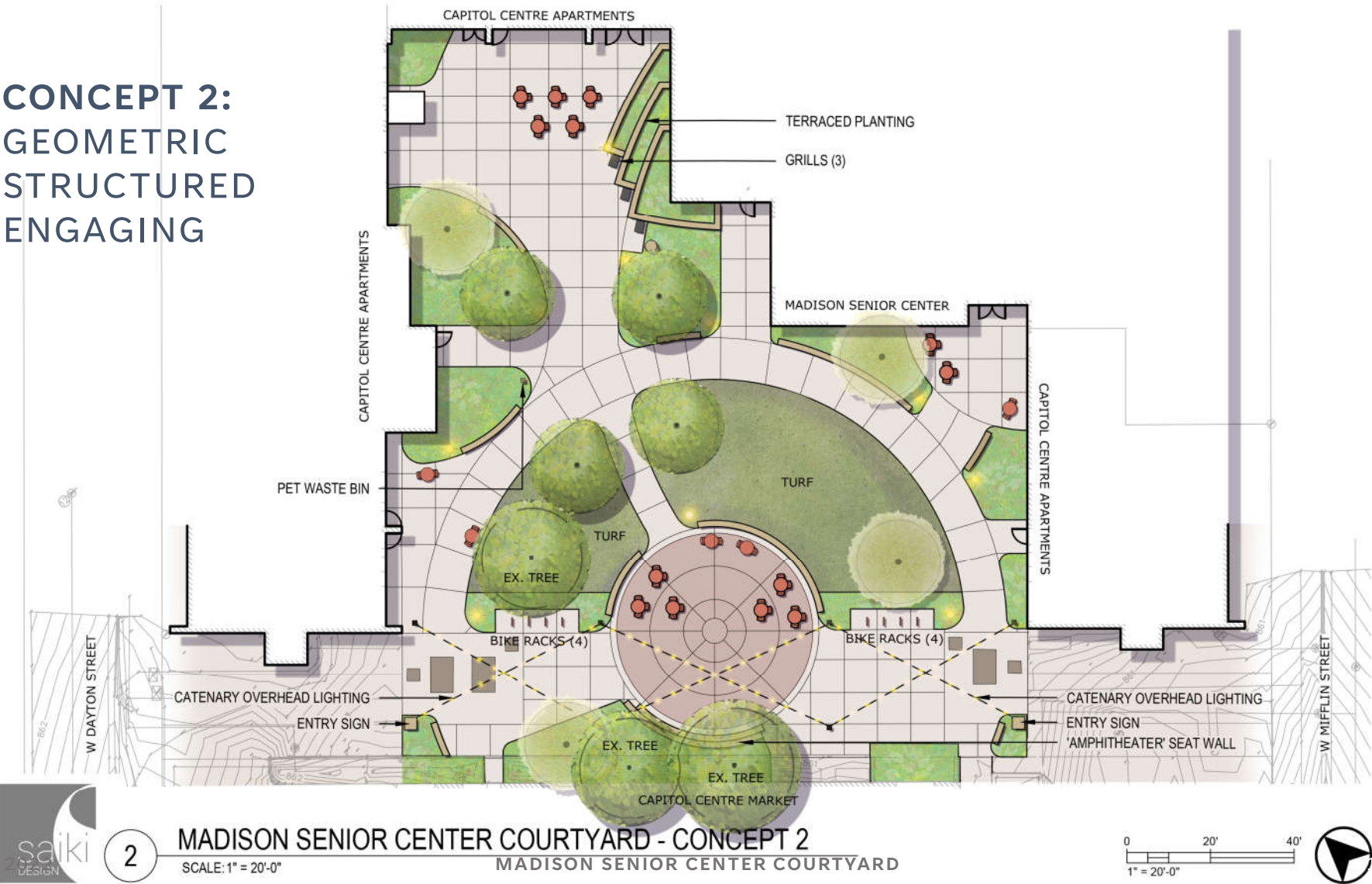
PERSPECTIVE 5: CAPITOL CENTRE APARTMENTS PATIO

CONCEPT 1: ORGANIC | NATURALISTIC | PASSIVE



PERSPECTIVE 6: MADISON SENIOR CENTER PATIO

CONCEPT 2:
GEOMETRIC
STRUCTURED
ENGAGING



CONCEPT 2: GEOMETRIC | STRUCTURED | ENGAGING



PERSPECTIVE 1: AERIAL VIEW FROM CAPITOL CENTRE MARKET

CONCEPT 2: GEOMETRIC | STRUCTURED | ENGAGING



PERSPECTIVE 2: AERIAL VIEW FROM MADISON SENIOR CENTER

CONCEPT 2: GEOMETRIC | STRUCTURED | ENGAGING



PERSPECTIVE 3: PARK ENTRANCE FROM WEST MIFFLIN STREET

CONCEPT 2: GEOMETRIC | STRUCTURED | ENGAGING



PERSPECTIVE 4: PARK ENTRANCE FROM WEST DAYTON STREET

CONCEPT 2: GEOMETRIC | STRUCTURED | ENGAGING



PERSPECTIVE 5: CAPITOL CENTRE APARTMENTS PATIO

CONCEPT 2: GEOMETRIC | STRUCTURED | ENGAGING



PERSPECTIVE 6: MADISON SENIOR CENTER PATIO



COMMENTS AND QUESTIONS



WRAP UP AND NEXT STEPS

NEXT STEPS FOR MSCC

- PLEASE PROVIDE FEEDBACK ON CONCEPT DESIGNS, AVAILABLE UNTIL 7/10/2022
 - LINK IN CHAT OR [HTTPS://WWW.CITYOFMADISON.COM/PARKS/PROJECTS/MADISON-SENIOR-CENTER-COURTYARD](https://www.cityofmadison.com/parks/projects/madison-senior-center-courtyard)
- JUNE 27TH, 2022 @ 2PM – NEXT IN-PERSON COMMUNITY MEETING AT MADISON SENIOR CENTER
- JULY/AUGUST 2022 URBAN DESIGN COMMISSION PRESENTATION
- JANUARY 2023 EXPECTED START OF BIDDING
- JUNE 2023 EXPECTED START OF CONSTRUCTION

THANK YOU

Project Website:

<https://www.cityofmadison.com/parks/projects/madison-senior-center-courtyard>

MIKE STURM

608-267-4921

msturm@cityofmadison.com

2022

