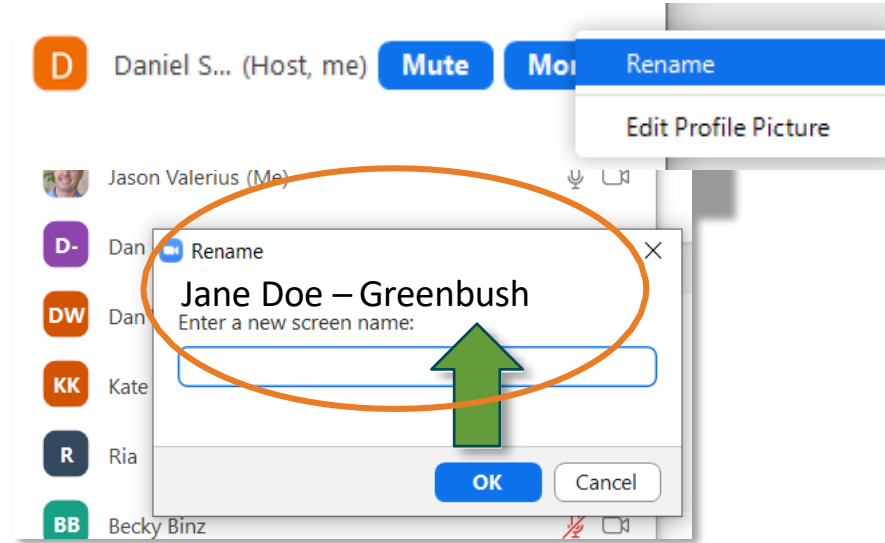


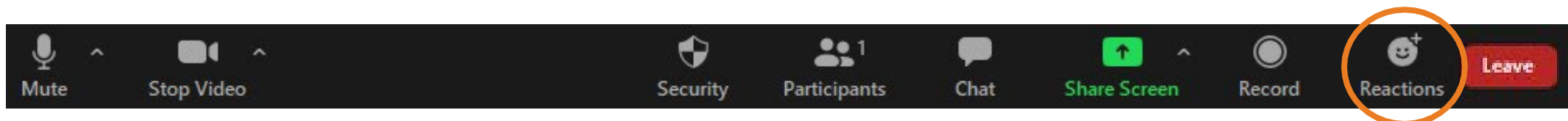
## WHILE YOU ARE WAITING FOR THE MEETING TO START

- Check to see your name is correct.
  - The name must match the name you used to register for this meeting.
  - You can edit it if needed



## Meeting Logistics

- All participants will be muted during the presentation and unmuted for the discussion sessions.
- We will take questions during the Q&A session after the presentation.
- This meeting will be recorded and available online to view later.



# MIDTOWN COMMONS PARK MASTER PLAN

**MADISON  
PARKS**

Public Meeting #1  
Virtual Meeting  
7/29/2025

# INTRODUCTION

Mike Sturm, City of Madison Parks Division Landscape Architect

Izzy Wilde, City of Madison Parks Division Landscape Architect

Note: This meeting is being recorded. It is a public record subject to disclosure.

By continuing to be in the meeting, you are consenting to being recorded and consenting to the record being released to public record requestors.

**MADISON  
PARKS**

# WELCOME

Thanks for coming, we're looking forward to working with you to plan Midtown Commons! We want to hear your thoughts and ideas, so to make sure everyone has an equal chance to speak...

- We will address comments/questions during discussion periods and at the end of the presentation.
- Please, no disparaging remarks about others' comments.
- If you are not comfortable speaking tonight, the Q&A button is another option, or email: [msturm@cityofmadison.com](mailto:msturm@cityofmadison.com)



# TONIGHT'S GOALS



Introduction to the master planning process

Review why the master planning process has been initiated

Review of draft master plan options

Next steps:

Gathering public input/comments, preparing plan revisions, follow-up public information meeting

# MASTER PLANNING

What is it?

A master plan:

- Is a forum for public input
- Provides a common vision for future management/development of a property through a public engagement
- Analyzes site inventory and suitability
- Provides programming (aka activities), development, and resource protection *recommendations*

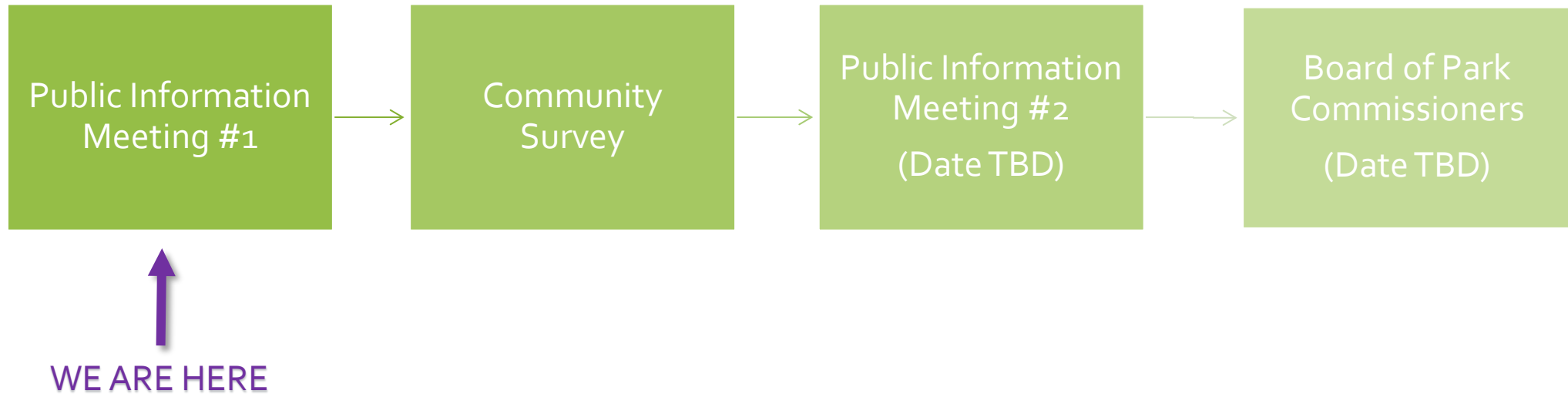
# MASTER PLANNING

A master plan does NOT:

- Specify specific materials or finishes
- Designate exact locations of the proposed amenities and improvements
- Provide a planting plan or tree management plan
- Contain construction drawings (which include information like dimensions, colors, products, quality requirements, etc. )

Questions NOT answered by a master plan: Who is going to build it, when (exact date), and how much will it cost?

# MASTER PLAN PROCESS



# WHY NOW?





# THROUGH THE YEARS...

1937



1962



1980

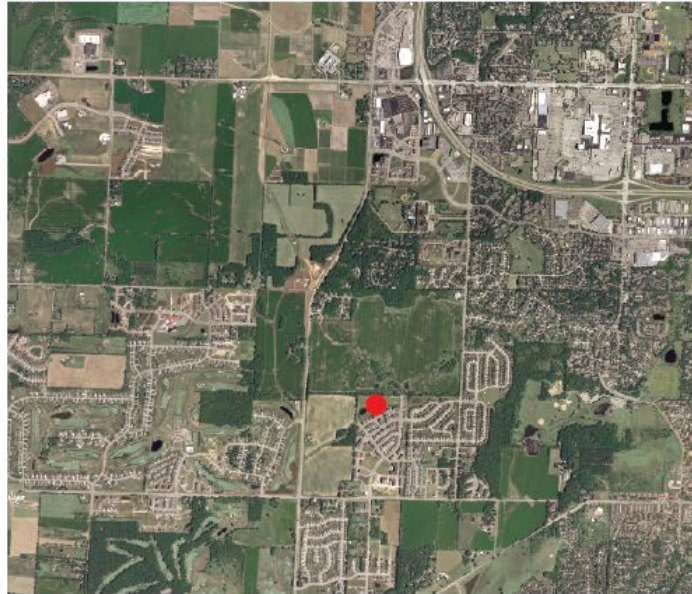


# THROUGH THE YEARS...

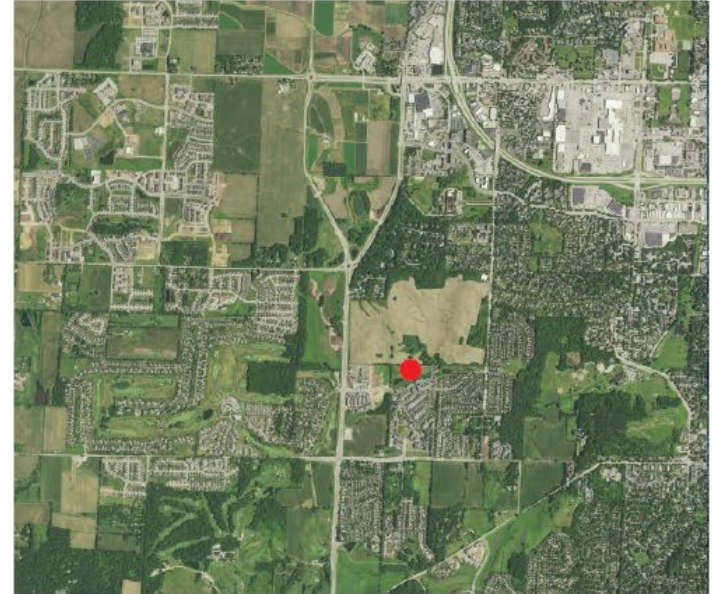
2000

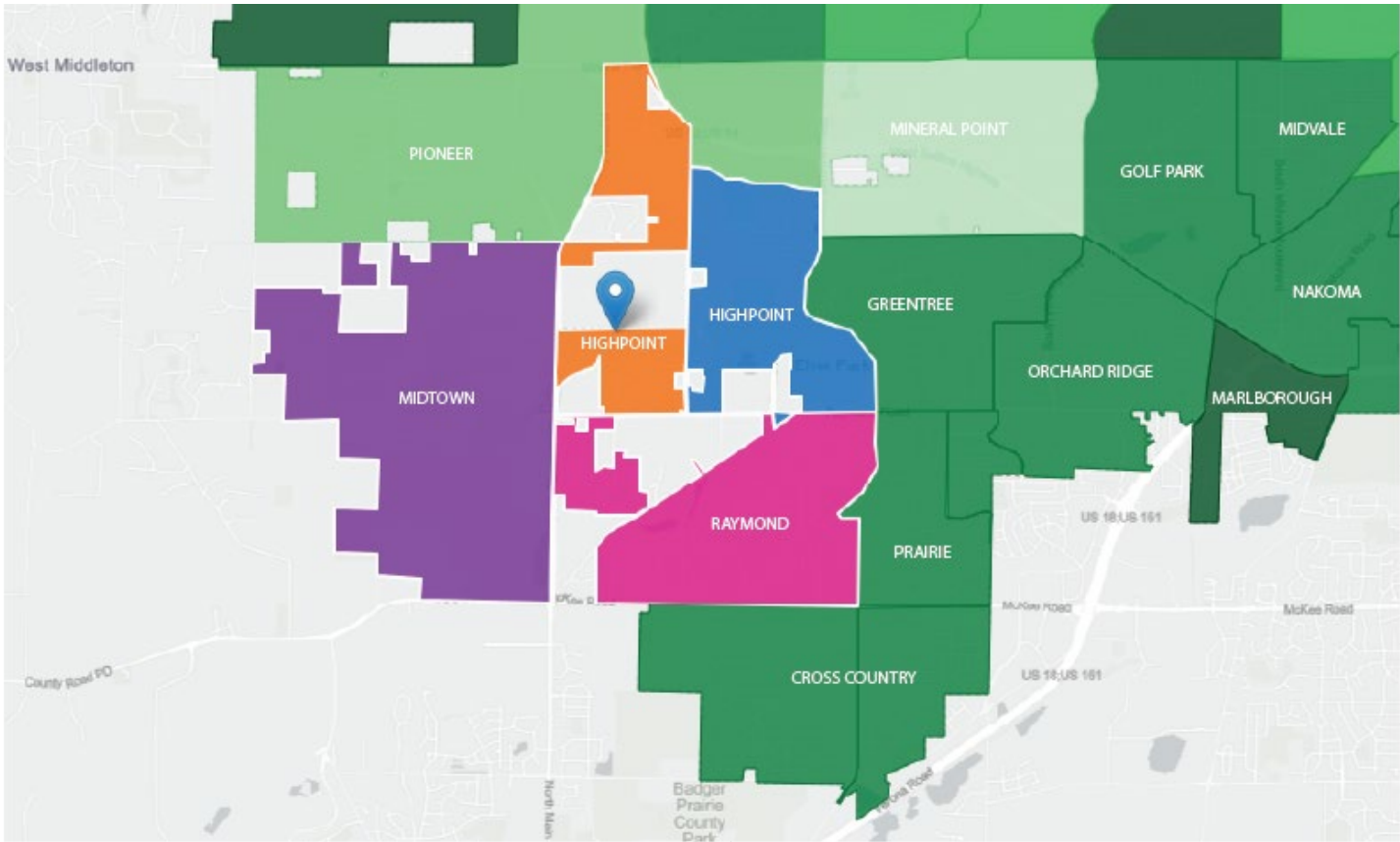


2010

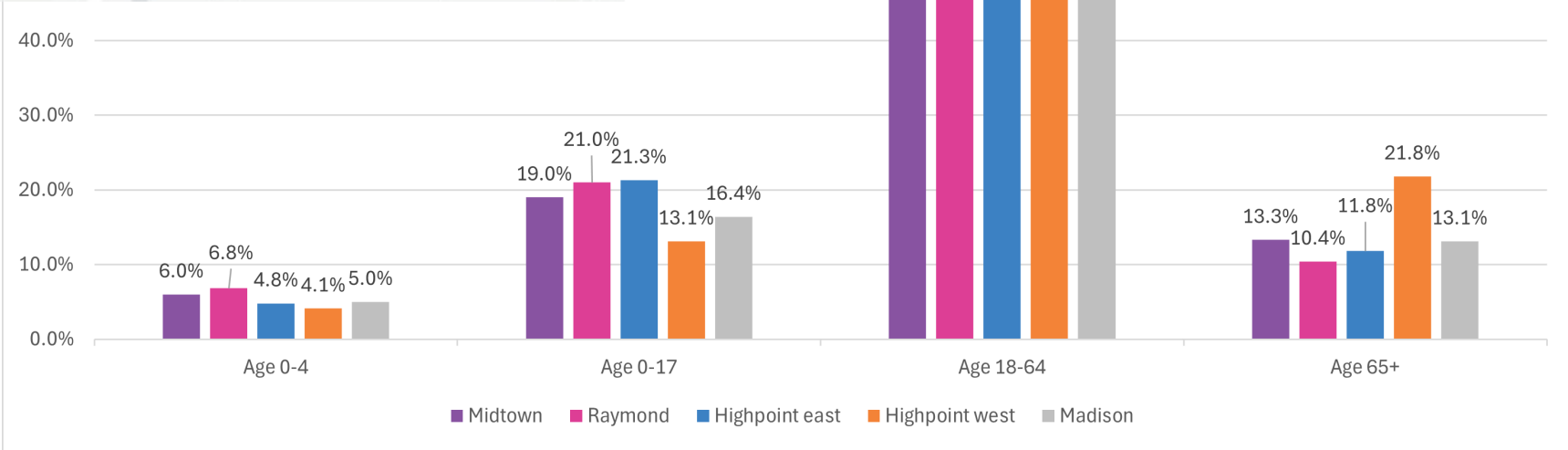


2022





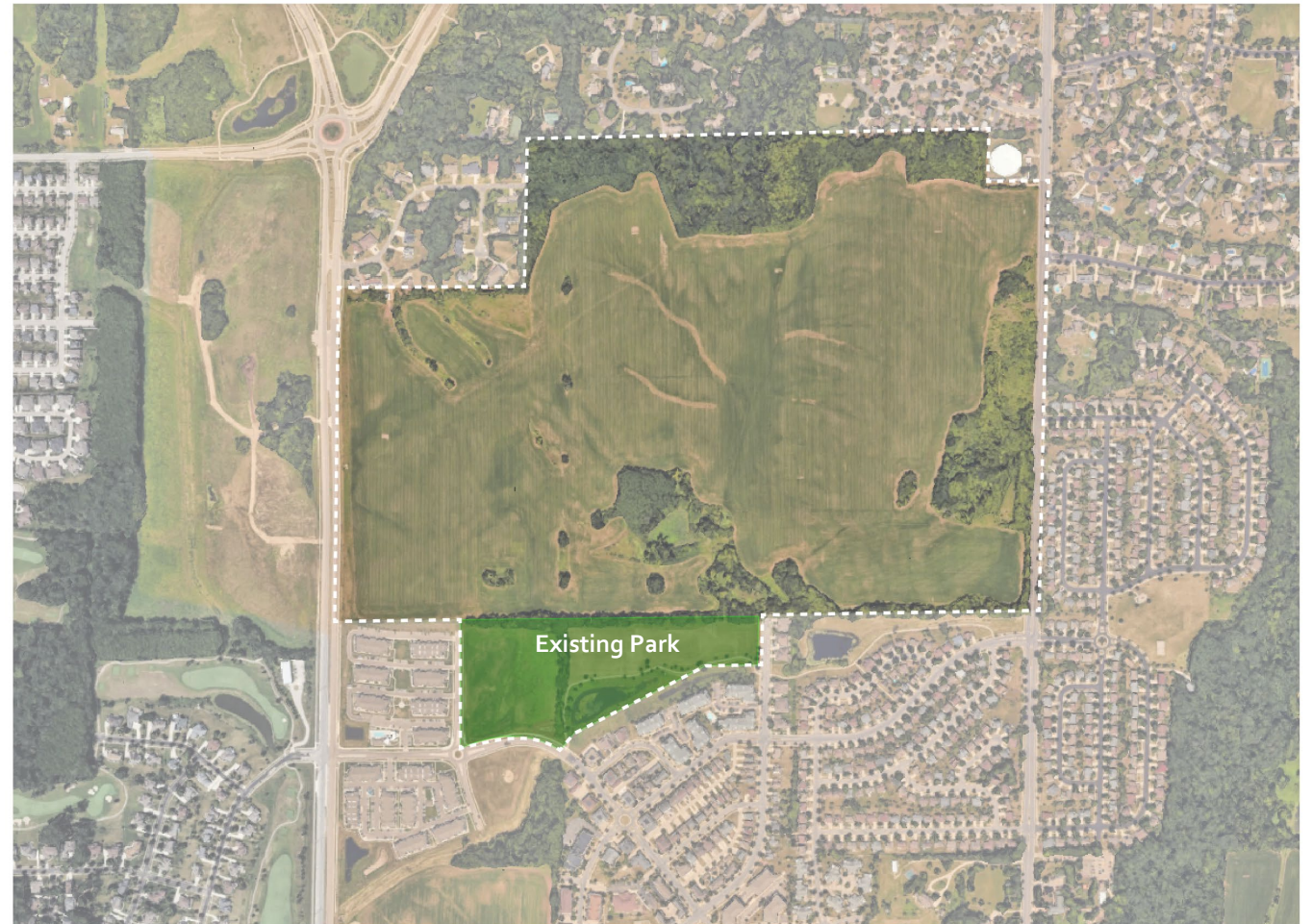
Age Demographics





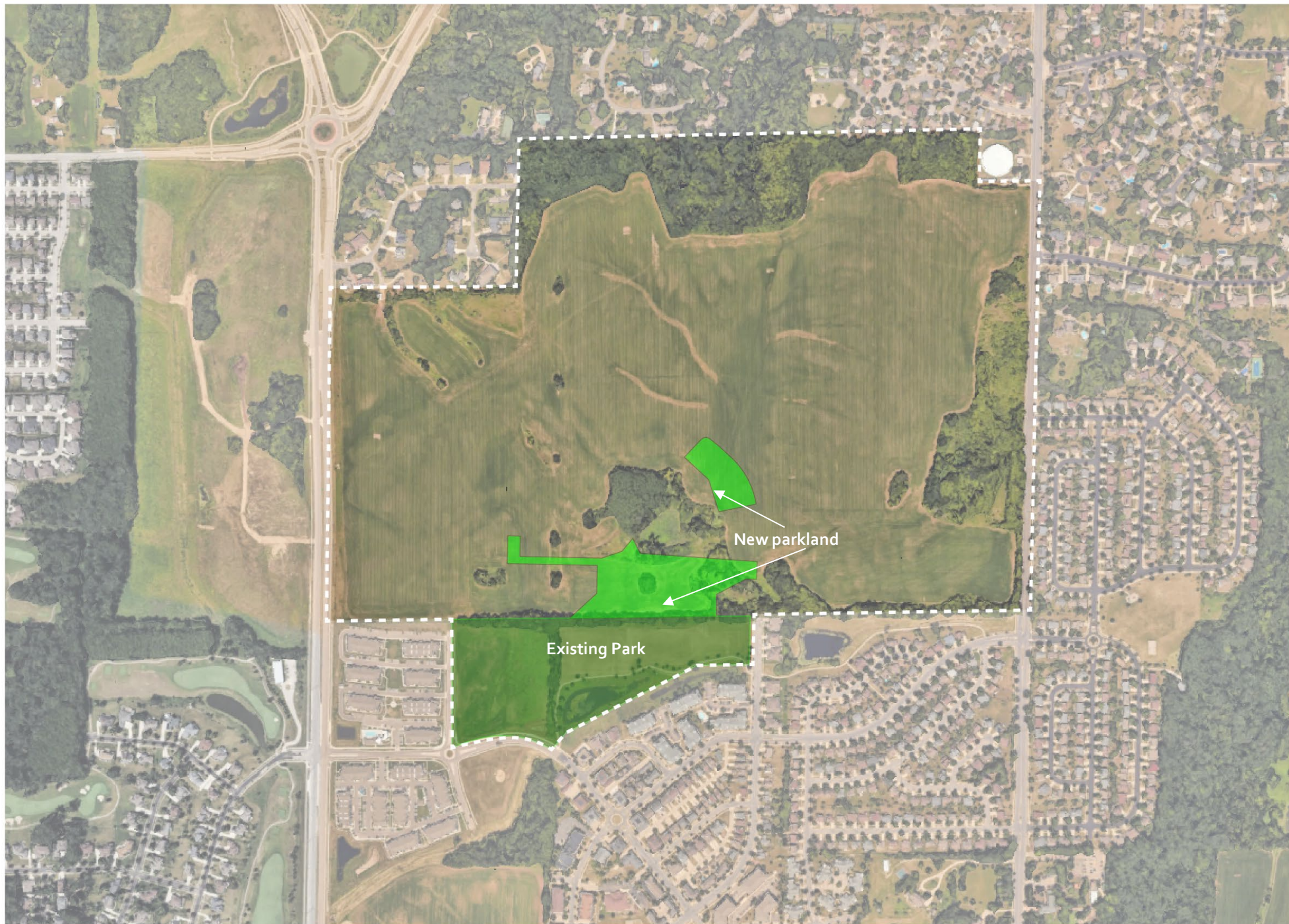
# EXISTING CONDITIONS

- Parkland
- Trails
- Topography
- Development
- Greenway
- Surrounding Area Park Amenities



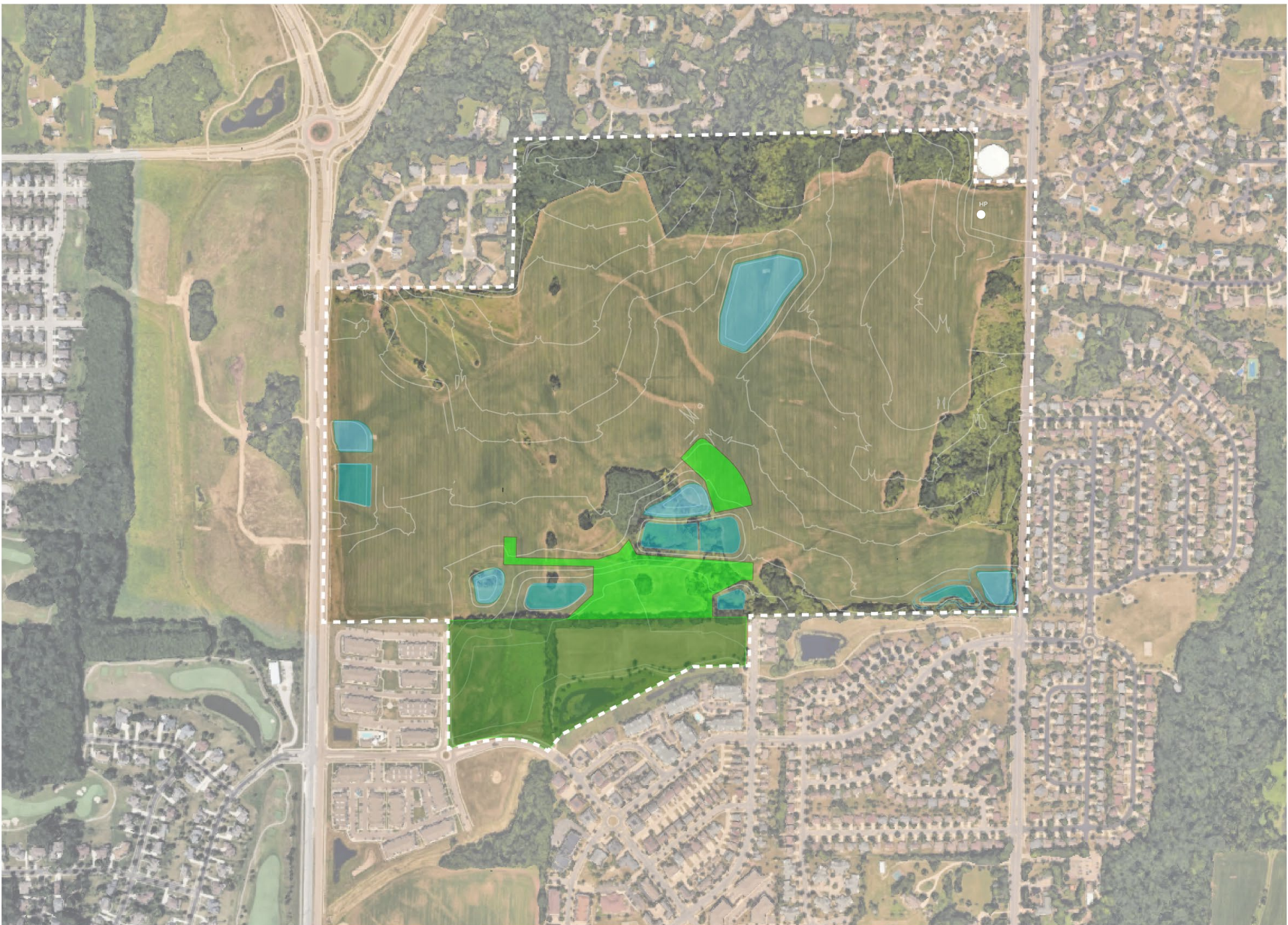


P  
A  
R  
K  
L  
A  
N  
D



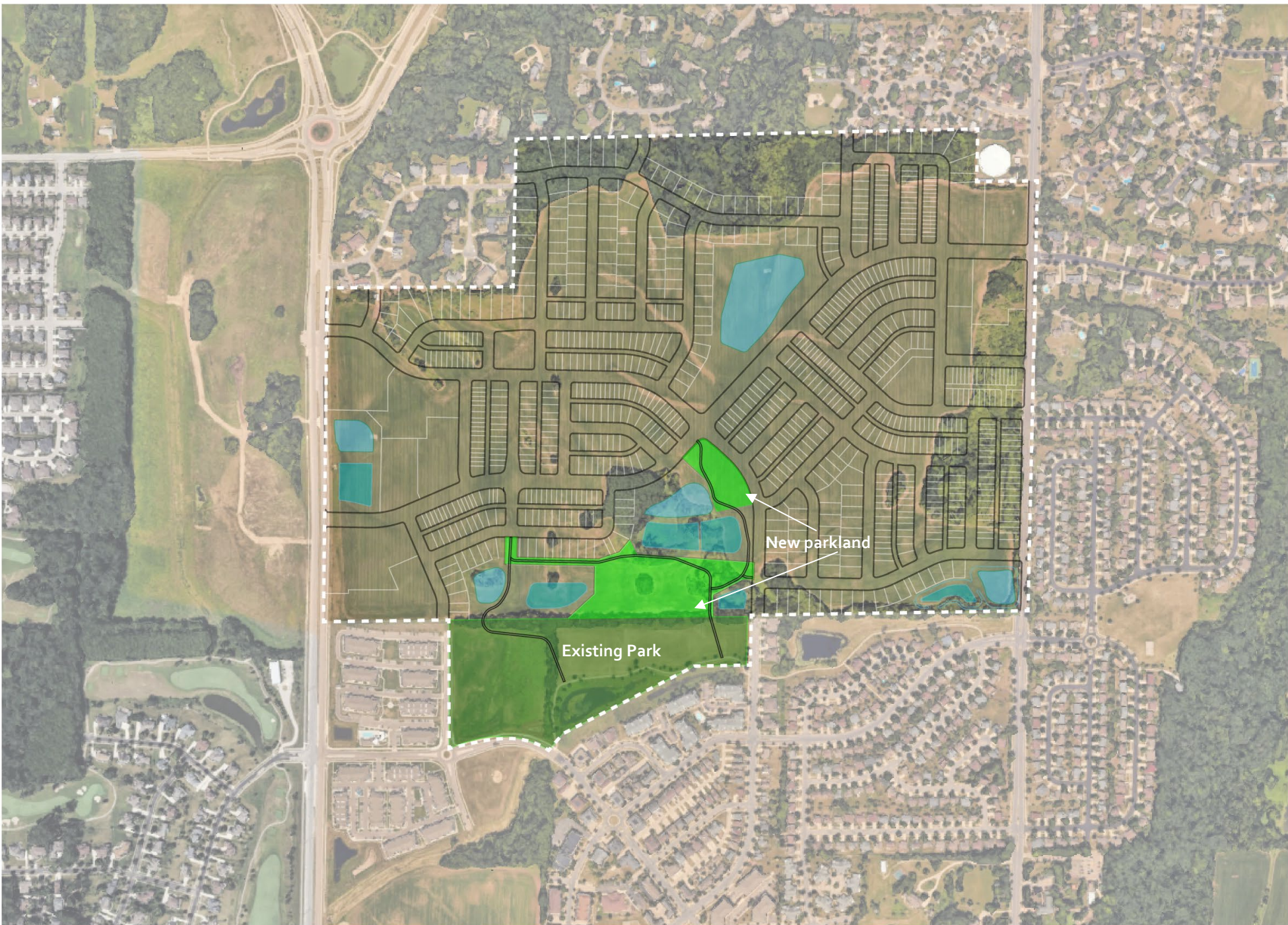


# T O P O G R A P H Y



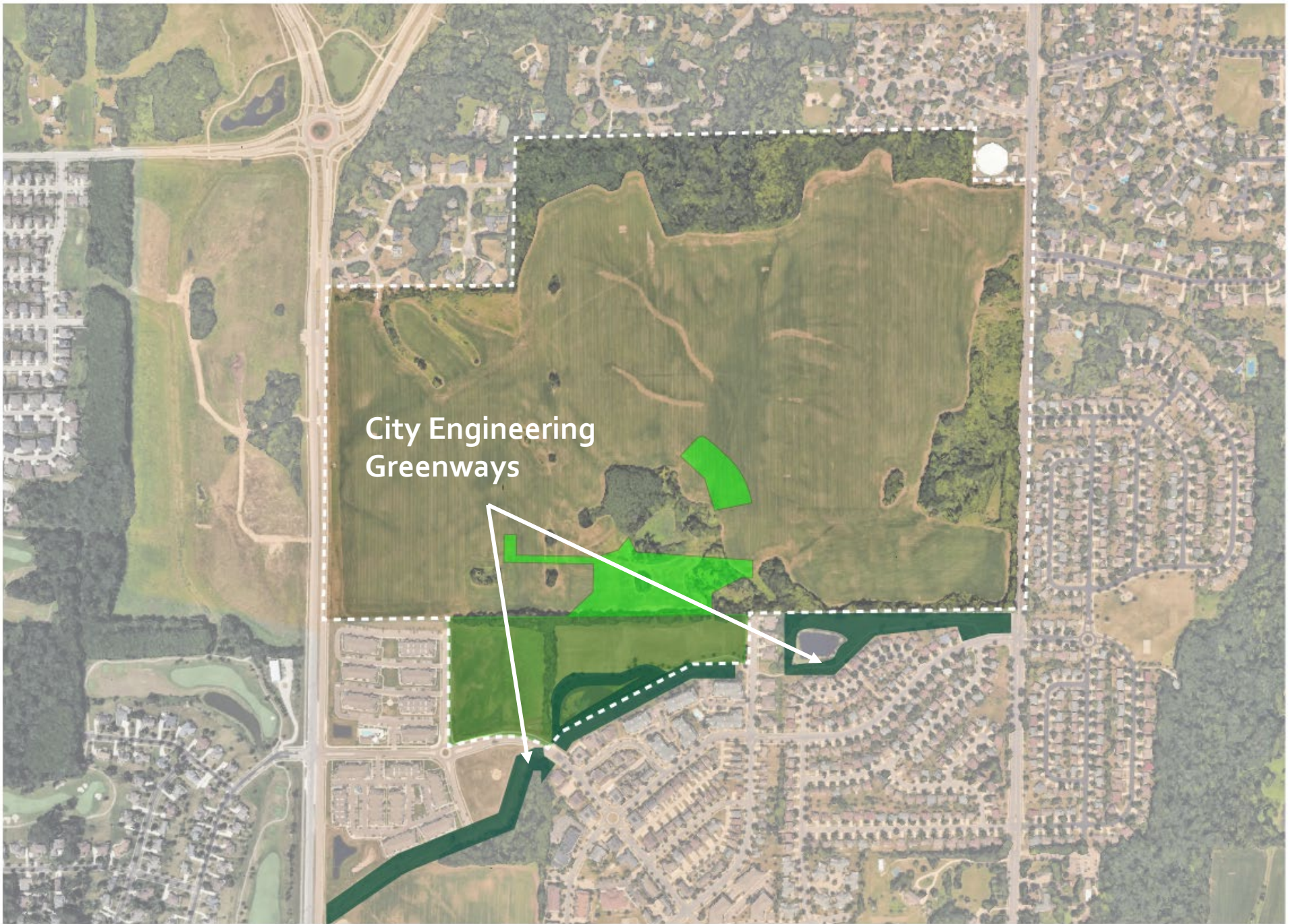


D  
E  
V  
E  
L  
O  
P  
M  
E  
N  
T



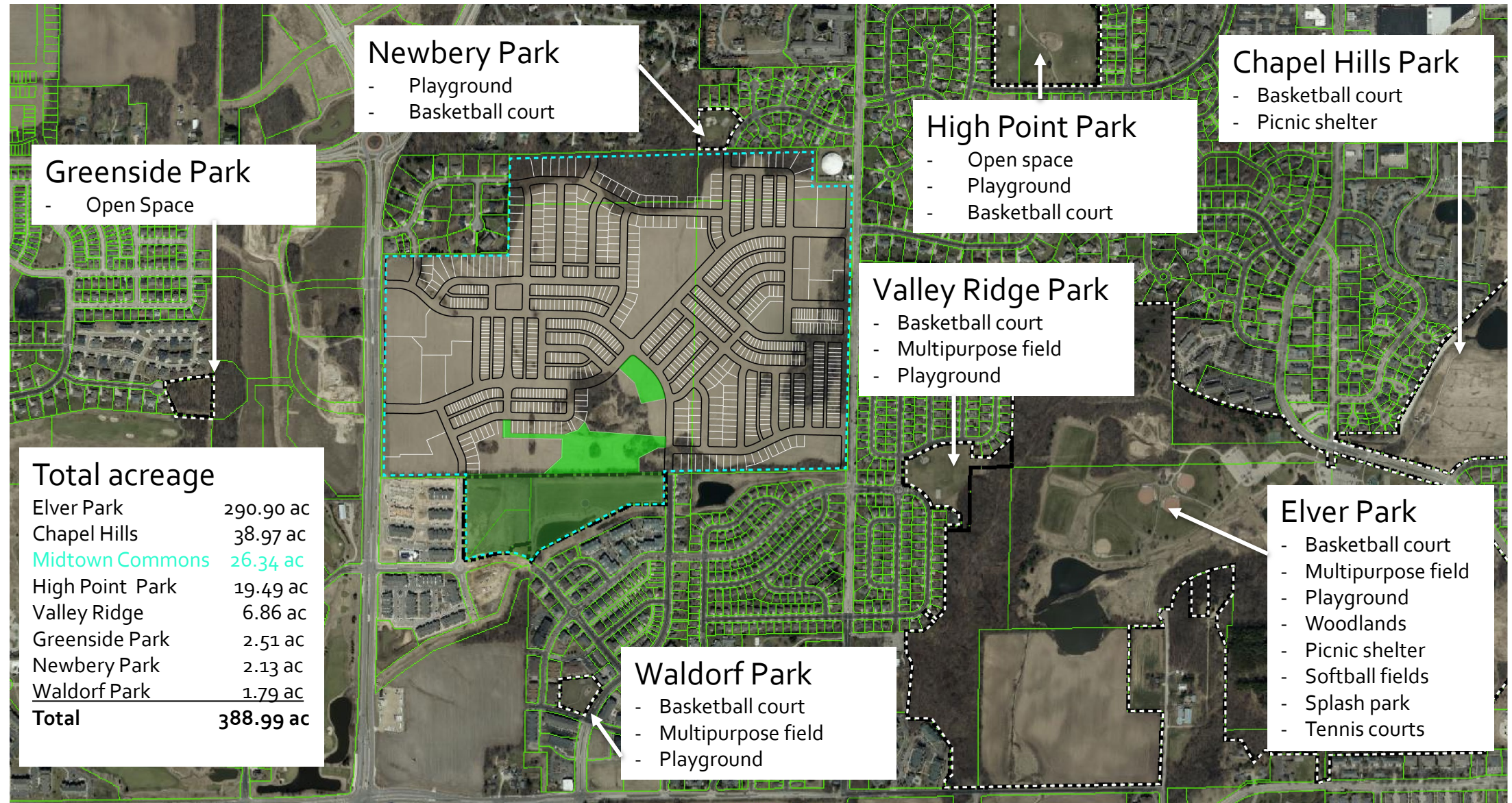


G  
R  
E  
E  
N  
W  
A  
Y





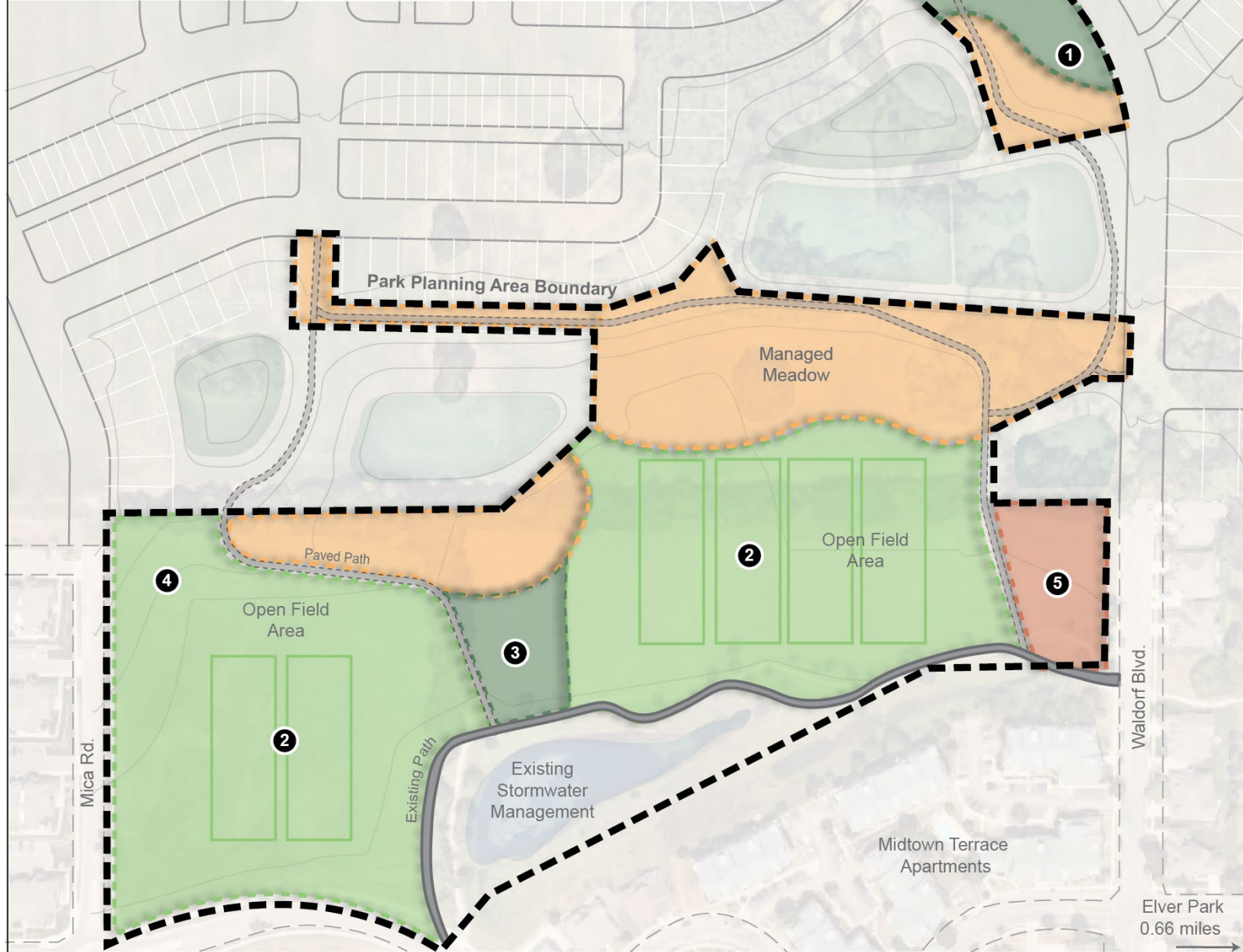
# SURROUNDING AREA PARK AMENITIES





MASTER PLAN OPTIONS...





- 1 Sun Shelter and Traditional Playground
- 2 Athletic Fields
- 3 Warm-up and Rec Space
- 4 Sledding Hill
- 5 Potential Community Garden

 Managed Meadow

 Lawn and Shade Trees

 Potential Community Garden

 Open Field Area

0' 200' SCALE  
NORTH

Date: 07/29/2025



# ATHLETIC FIELDS





# COMMUNITY GARDEN





# PLAYGROUND

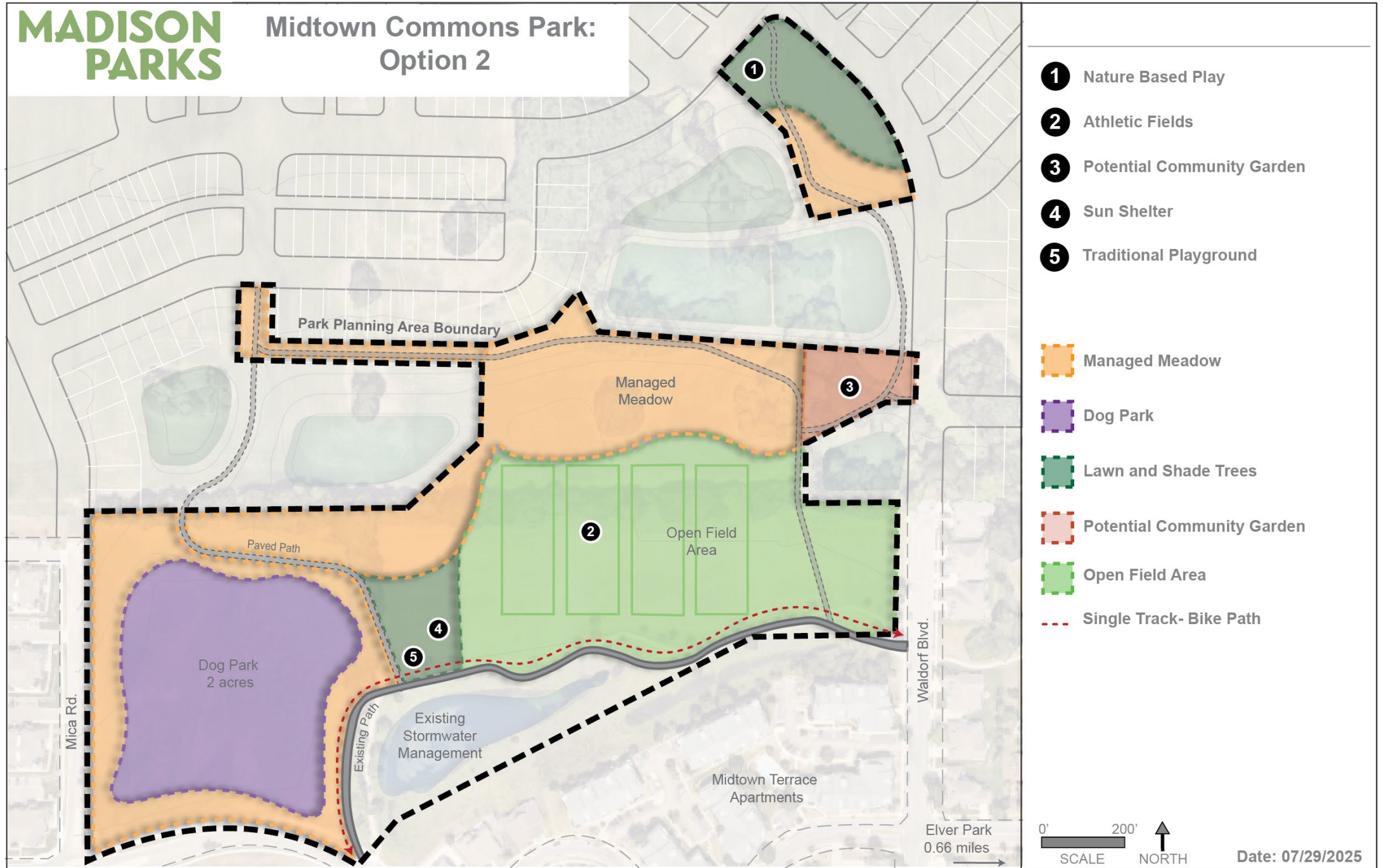




# MANAGED MEADOW









# DOG PARK



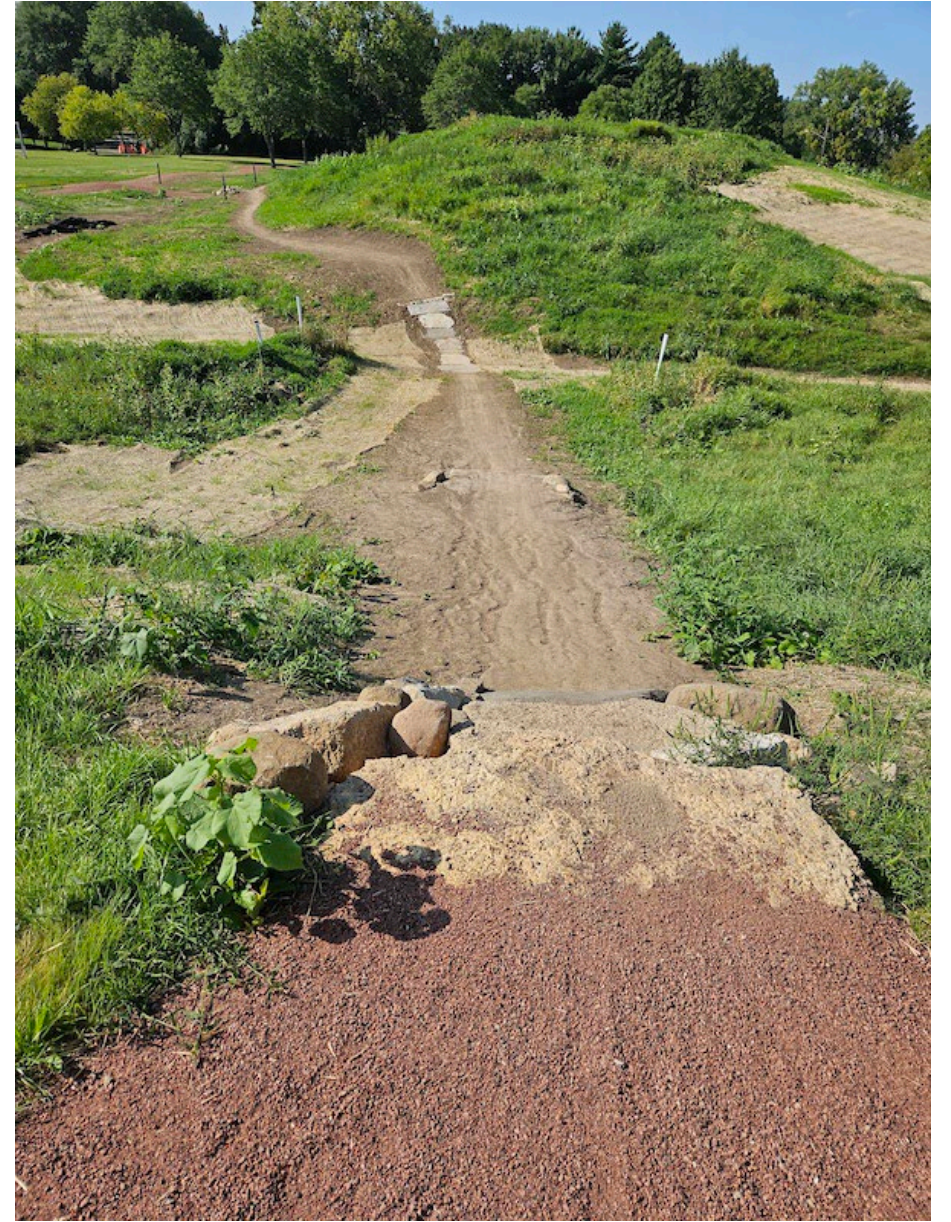
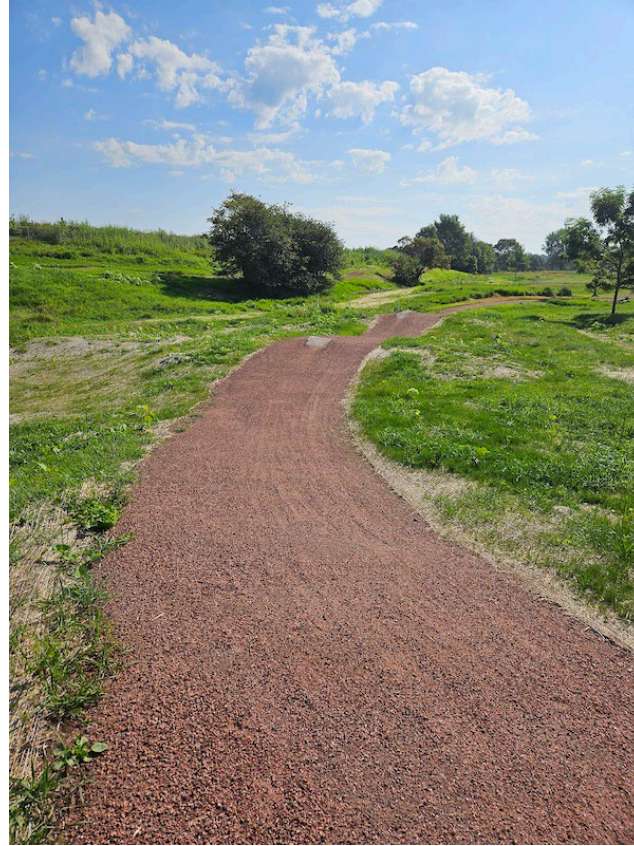
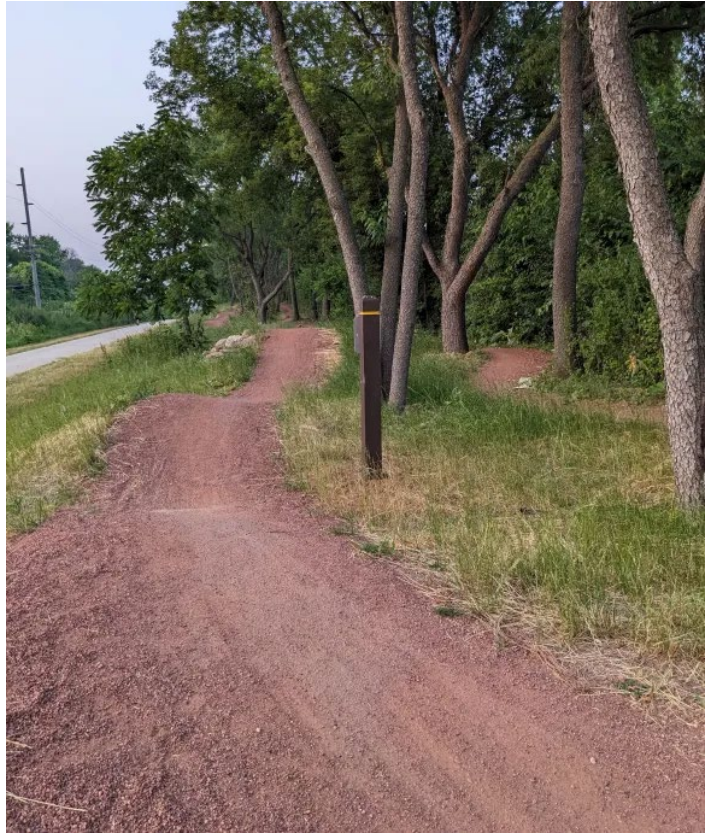


# NATURE PLAY





# SINGLE TRACK







- 1 Community Patio (sun shelter, bench swing, lawn games)
- 2 Traditional Playground
- 3 Athletic Fields
- 4 Sledding Hill
- 5 Nature Based Play
- 6 Basketball Court
- Managed Meadow
- Dog Park
- Lawn and Shade Trees
- Open Field Area
- Single Track- Bike Path

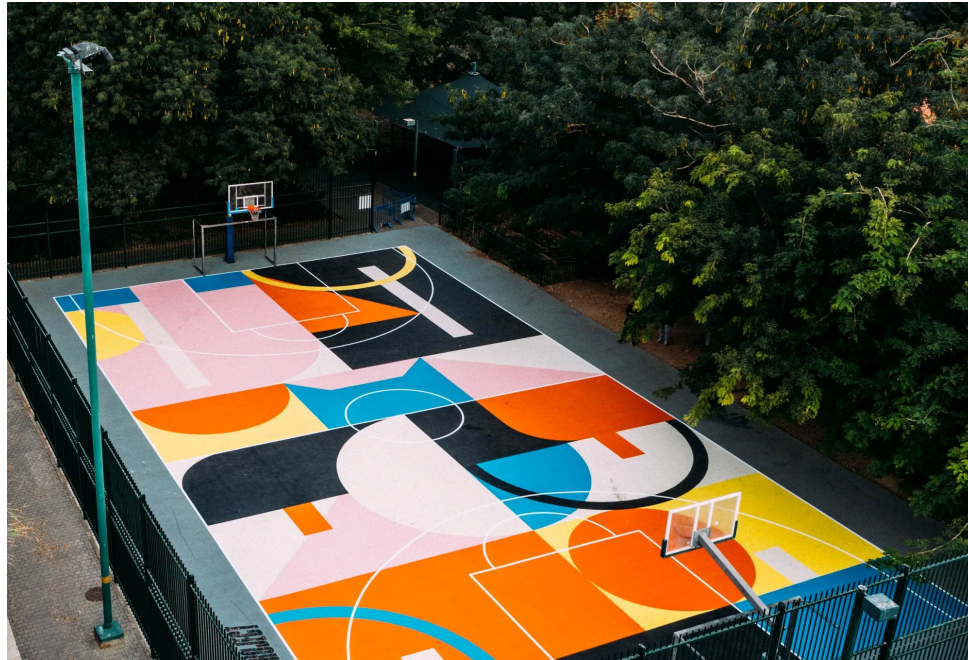


# COMMUNITY PATIO





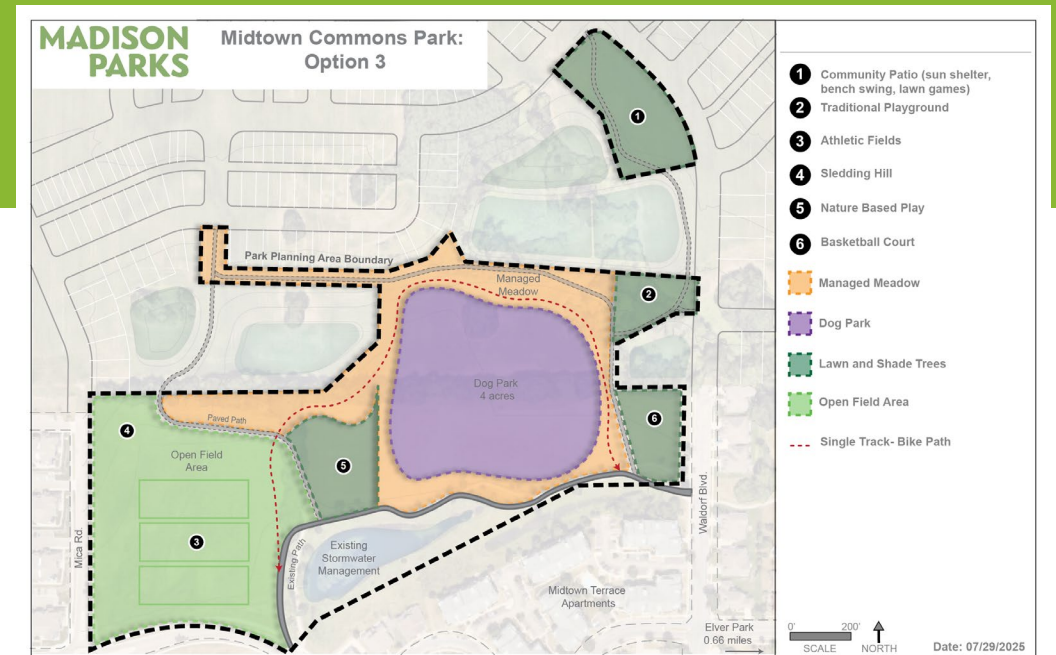
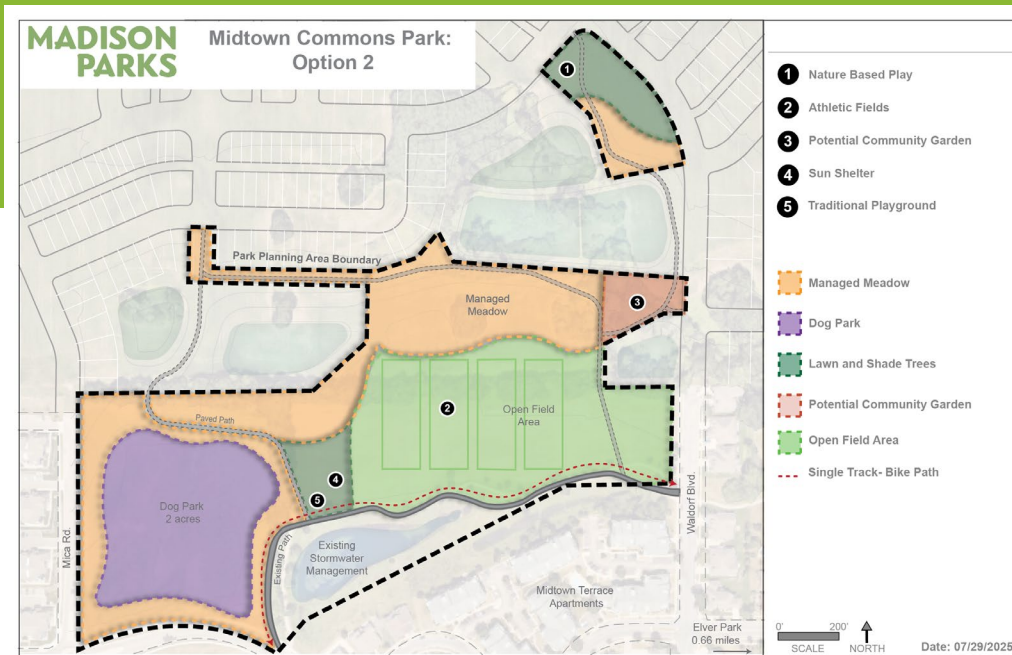
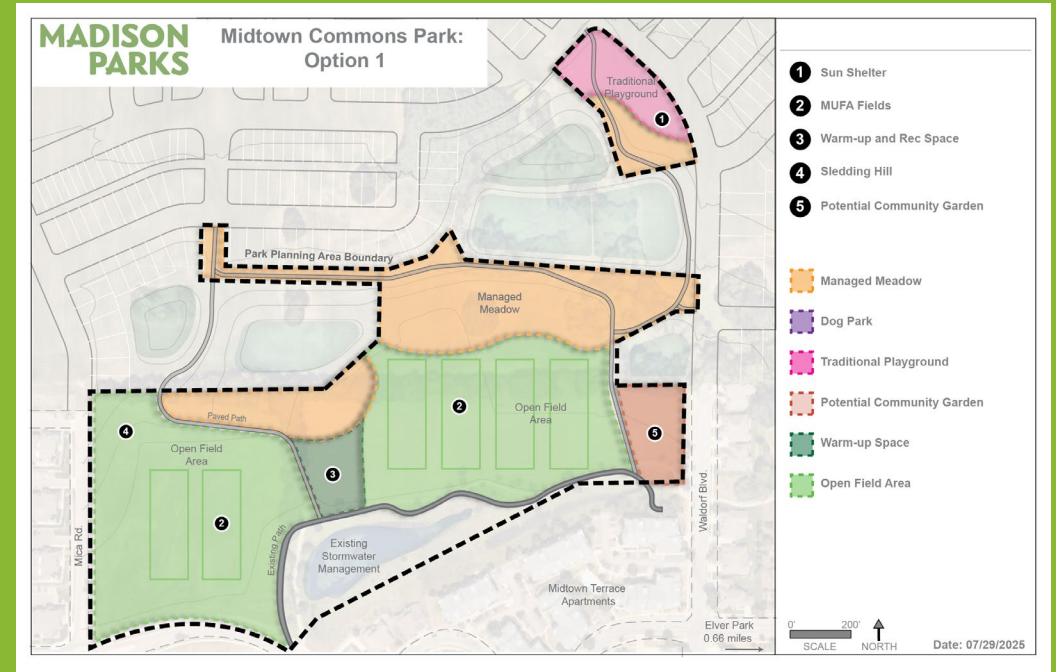
# BASKETBALL COURT





# WHICH OPTION DO YOU PREFER?

- A. Option 1
- B. Option 2
- C. Option 3
- D. I love them all! 😊



# PUBLIC INPUT PERIOD

Please use the “raise hand” feature if you wish to speak. Another option is to submit your question through the Q&A button at the bottom of your screen.



# NEXT STEPS

- Community Survey
- Gathering public input
  - Be sure to contact us with comments
  - Madison Parks will analyze public input and site conditions
  - What do residents want and what can the site provide?
- Public Input Meeting #2
  - Date To Be Determined
  - Revised plans will be presented for public review!

Watch the City Parks “Project Portal” website for the Community Survey and project updates!  
<https://www.cityofmadison.com/parks/projects/midtown-commons-park-master-plan>



# COMMENTS?

If you have additional comments, staff are available to listen to your comments. You may also email or call with your comments.

CONTACT US:  
MIKE STURM  
EMAIL: [MSTURM@CITYOFMADISON.COM](mailto:MSTURM@CITYOFMADISON.COM)

**MADISON  
PARKS**