

# Cypress Spray Park

Public Information Meeting #1

April 20<sup>th</sup>, 2026



MADISON  
PARKS

# Welcome!

Izzy Wilde – City of Madison Parks

Blake Theisen – Parkitecture

Katie MacDonald – Parkitecture

Julio Garcia – Interpreters' Co-op of Madison

Delia Reszel – Interpreters' Co-op of Madison



# Agenda

1

- Site Information and Context
- Project Timeline
- Engagement

2

- Design Themes
- Park Layout Options

3

- Public Input

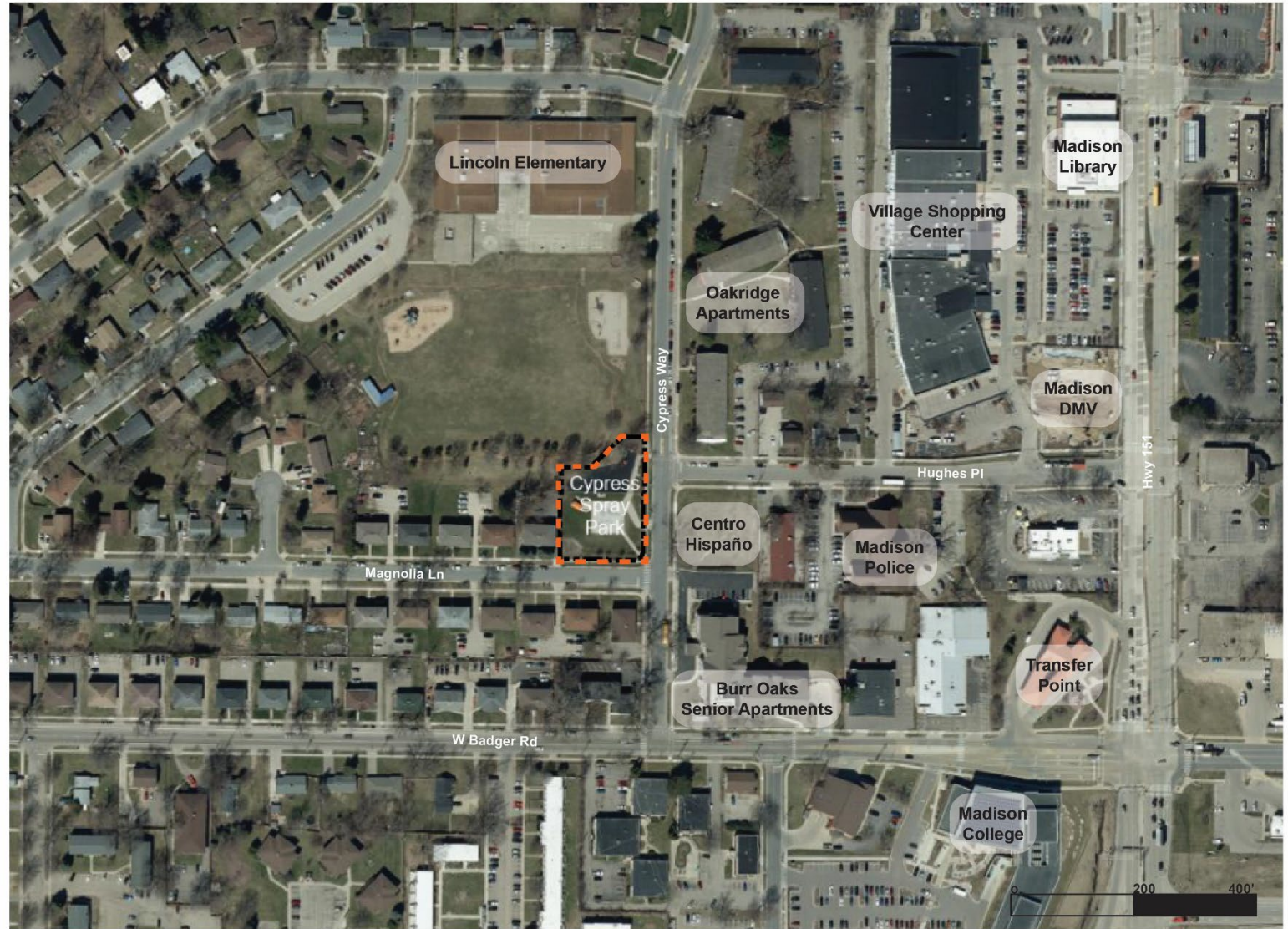
# Current Park and Splash Pad





Centro Hispano

- Surrounded by families and both single family and multi-family housing
- More than 3x number of Hispanic and Asian residents than in Madison overall



# Surrounding Parks



## Total acreage

Quann Park	55.43 ac
Bowman Park	23.36 ac
Penn Park	7.35 ac
Heifetz Park	3.00 ac
Fraust Park	2.40 ac
Cypress Spray Park	0.66 ac
Newville Park	0.32 ac
Fisher Street Park	0.30 ac
<b>Total</b>	<b>92.82 ac</b>

Fisher Street Park  
- Playground

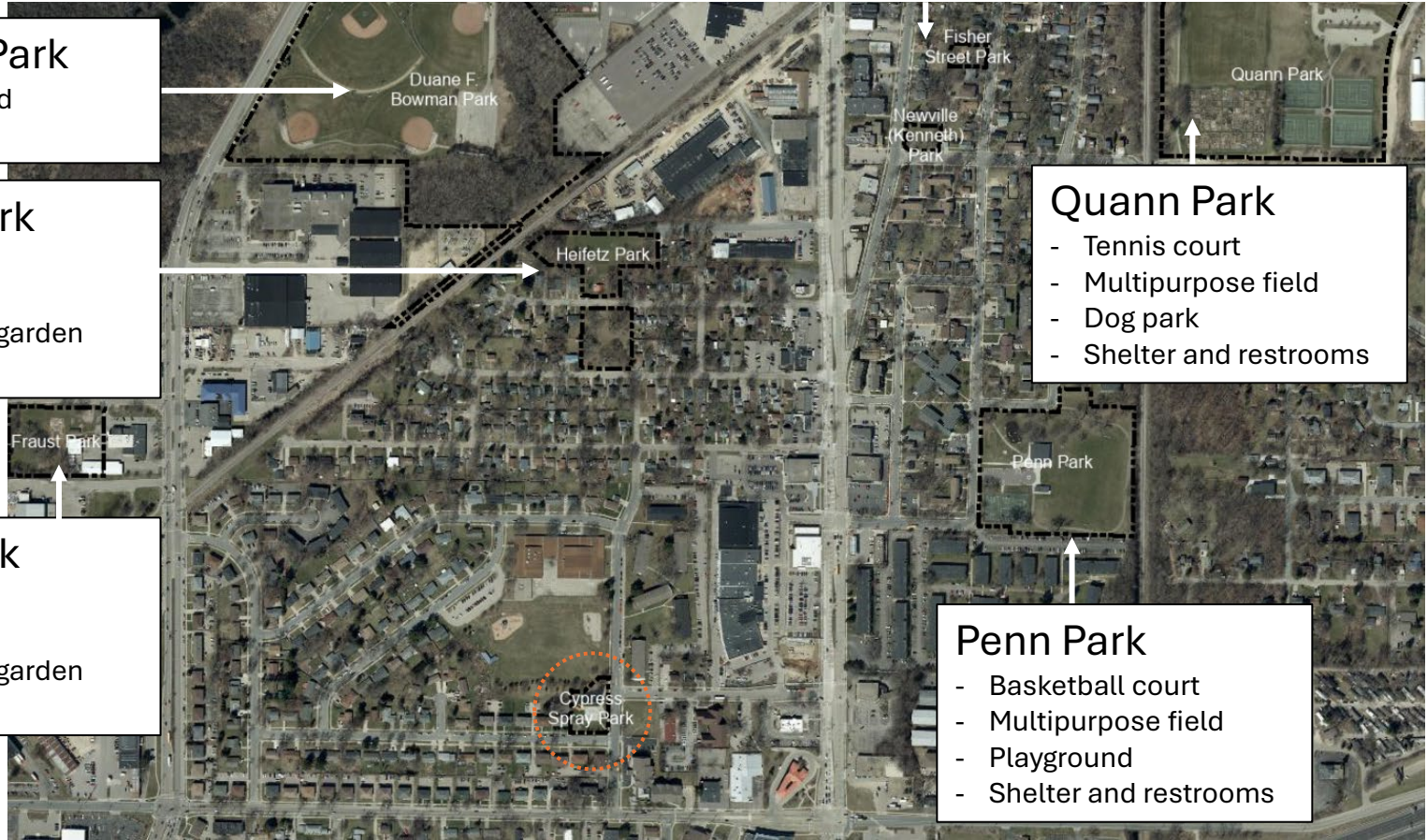
Bowman Park  
- Baseball field  
- Restrooms

Heifetz Park  
- Shelter  
- Playground  
- Community garden  
- Basketball

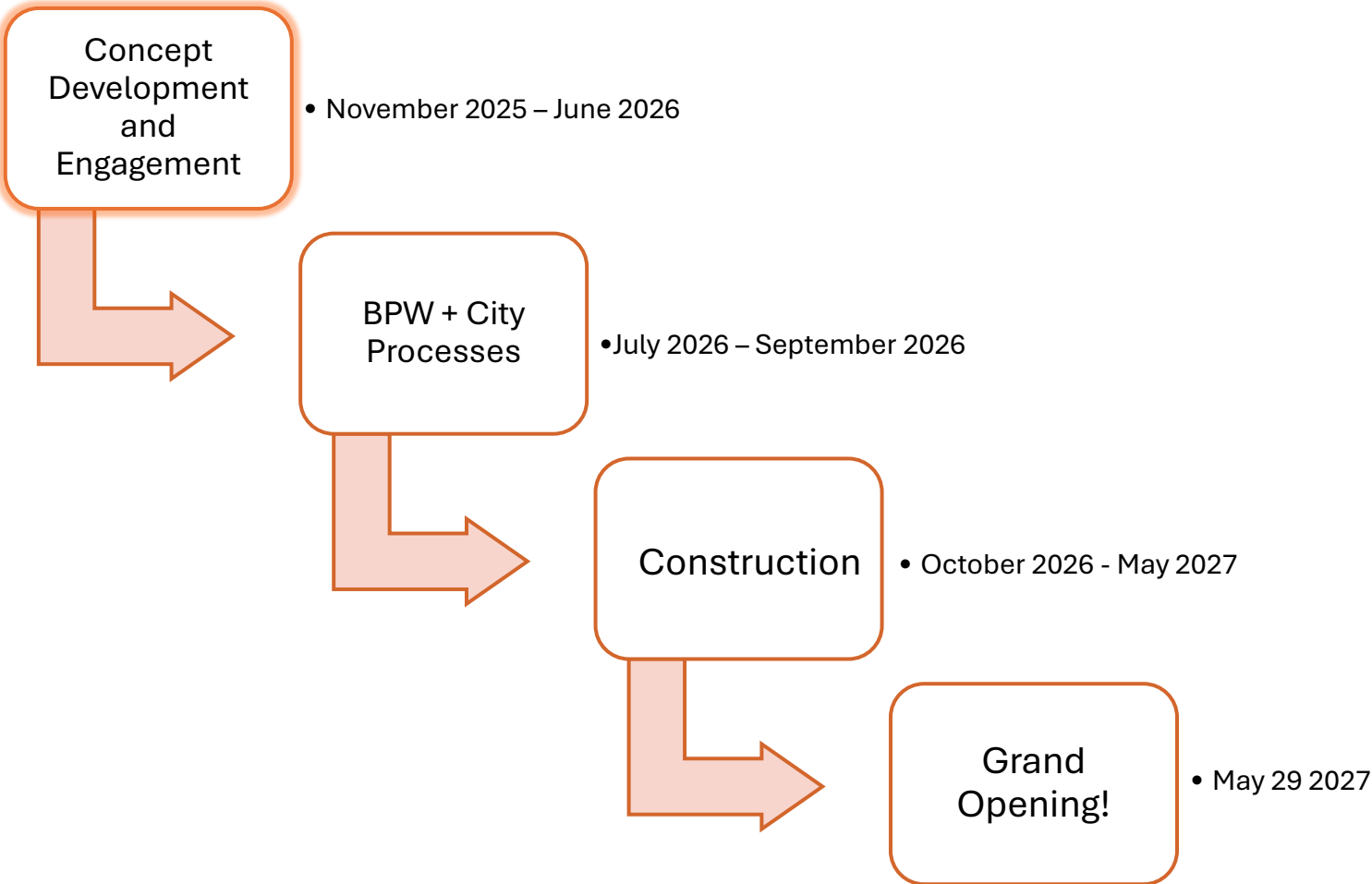
Fraust Park  
- Shelter  
- Playground  
- Community garden  
- Basketball

Quann Park  
- Tennis court  
- Multipurpose field  
- Dog park  
- Shelter and restrooms

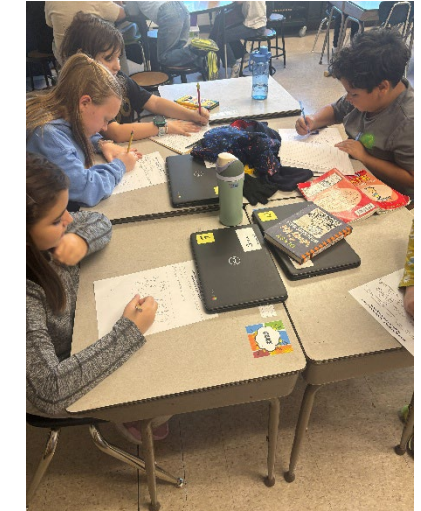
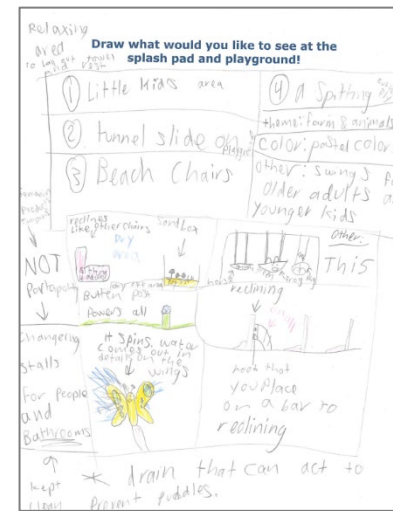
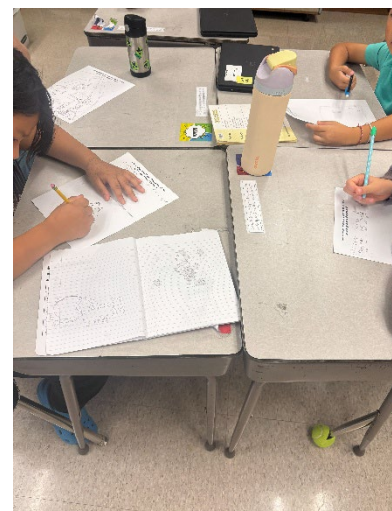
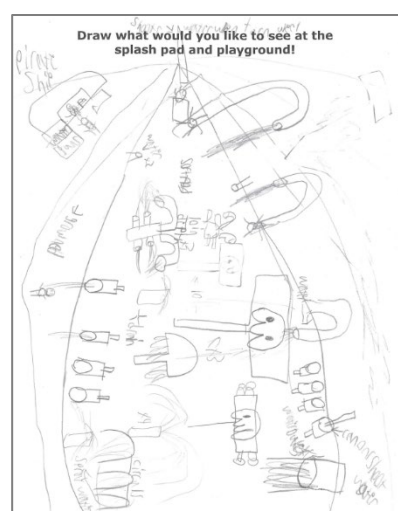
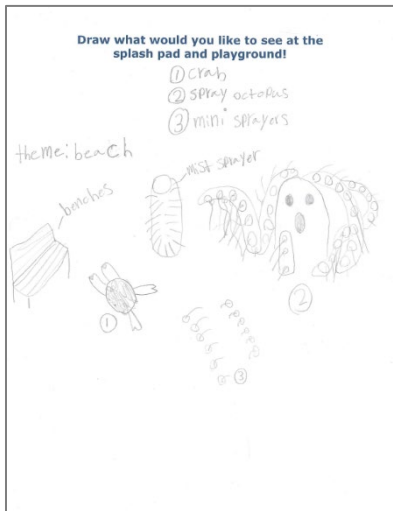
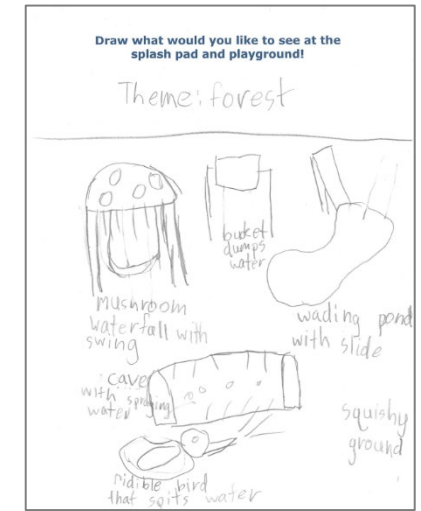
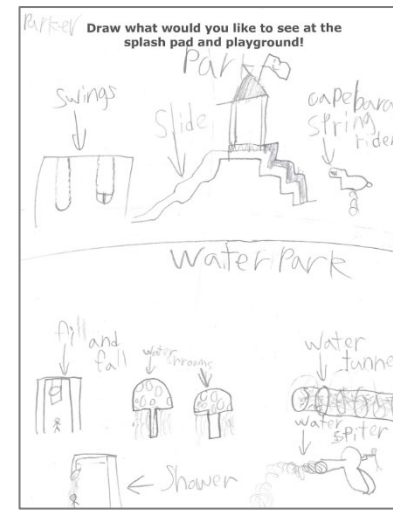
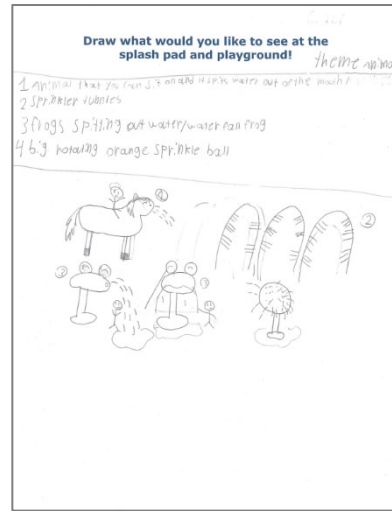
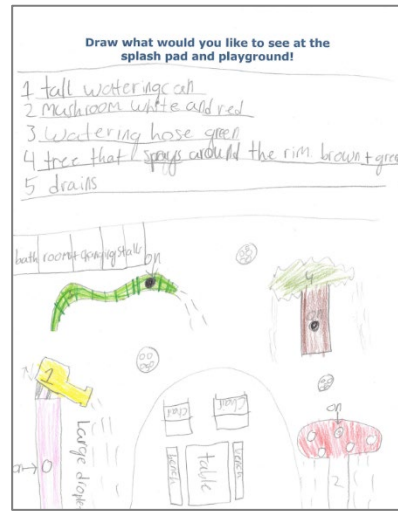
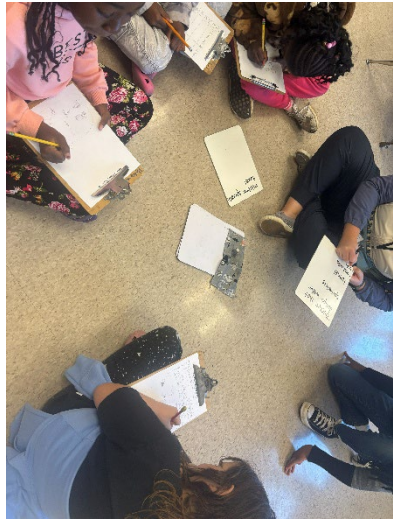
Penn Park  
- Basketball court  
- Multipurpose field  
- Playground  
- Shelter and restrooms



# Timeline



# Designing with Lincoln 4<sup>th</sup> Graders



# Take-Aways

## High Priority:

- Spray tunnel (22)
- Dumping bucket (18)
- Animal features that spray (16)
- Water guns/shooters (10)

## Priority:

- Playground with monkey bars (5)
- Playground with swings (5)
- Frog features (4)
- Spraying umbrella (4)
- Softer ground (4)

## Lower Priority:

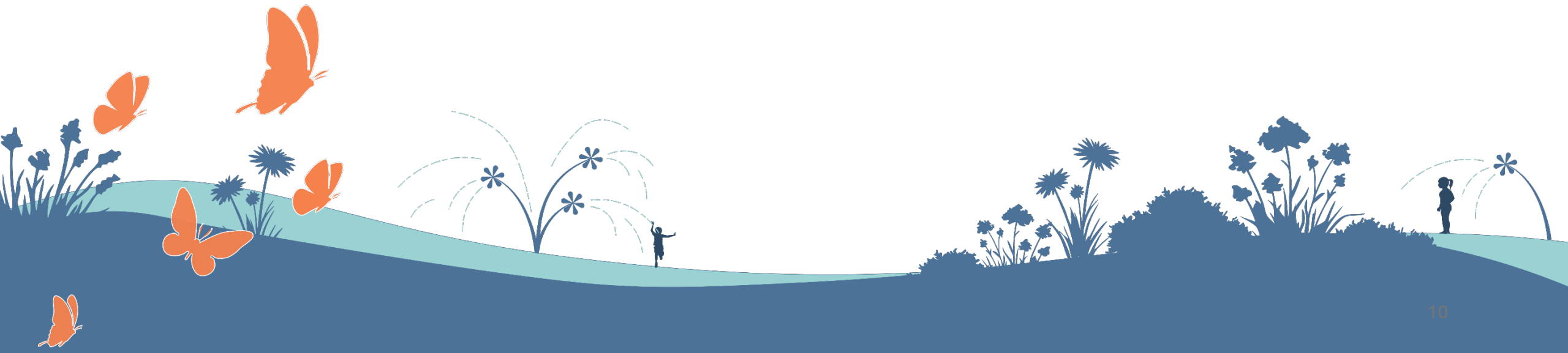
- Ground sprayers (3)
- Tall sprinklers (3)
- Water cannon (3)
- Pirate ship (3)
- Tables with benches and umbrellas (3)
- Full bathrooms with changing area (3)

## Popular themes:

- Forest
- Pirate
- Garden
- Ocean/fish/beach

Note: Numbers represent how students mentioned the feature

# Design Themes ---



# Forest

---



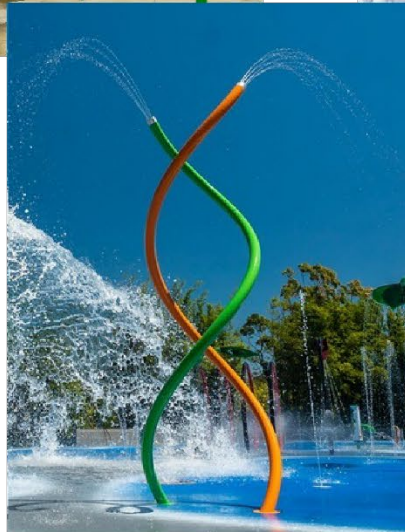
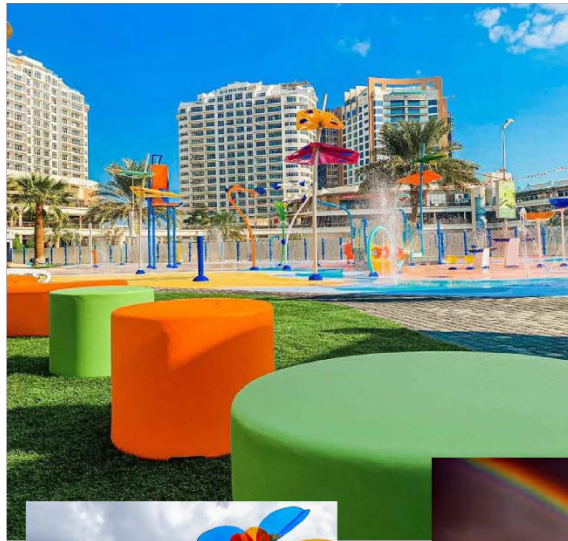
# Garden

---



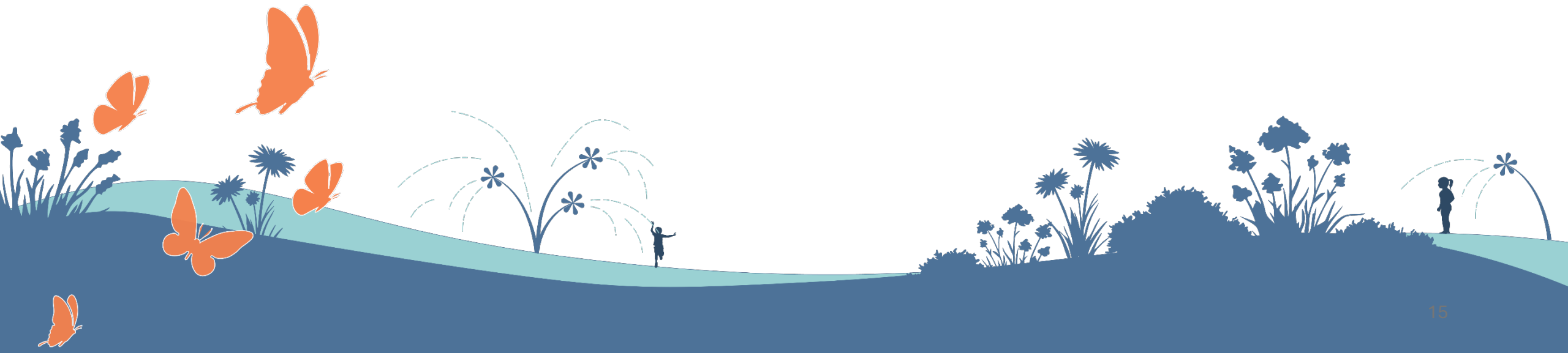
# Colorful

---





# Park Layouts ---



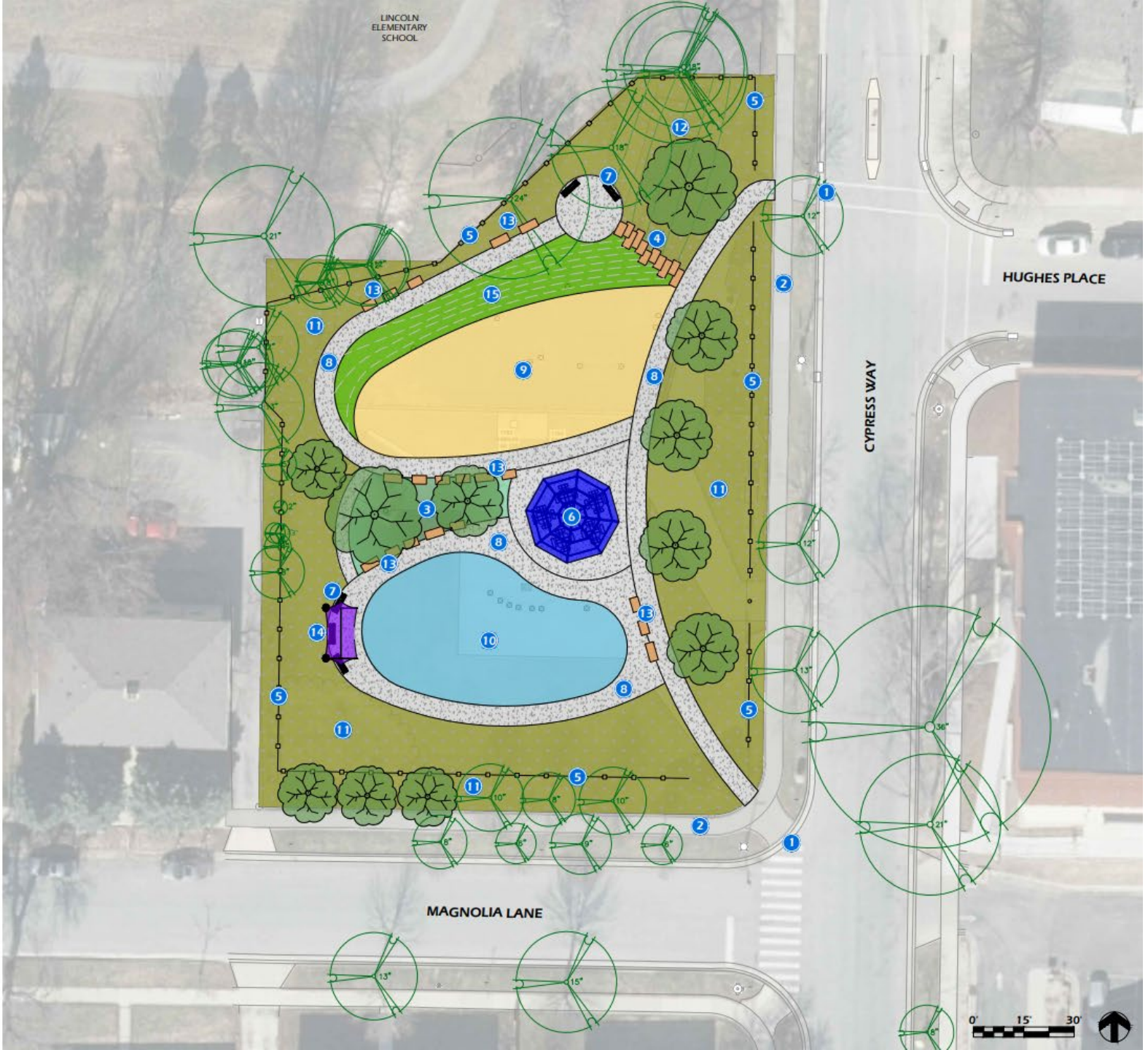
**LEGEND**

- 1 Existing Curb Ramp
- 2 Existing Sidewalk
- 3 Existing Shade Structure
- 4 Gate
- 5 Fence
- 6 Open-Air Shelter Structure
- 7 Bench
- 8 Concrete Pavement
- 9 Playground
- 10 Splashpad
- 11 Lawn
- 12 Lawn Hillside
- 13 Seating Stones
- 14 Fabric Shade Structure



**LEGEND**

- 1 Existing Curb Ramp
- 2 Existing Sidewalk
- 3 Native Planting Area
- 4 Perron Stacked Stepping Stones
- 5 Fence
- 6 Open-Air Shelter Structure
- 7 Bench
- 8 Concrete Pavement
- 9 Playground
- 10 Splashpad
- 11 Lawn
- 12 Lawn Hillside
- 13 Seating Stones
- 14 Fabric Shade Structure
- 15 Playground - Sloped Hill Play Area



**LEGEND**

- 1 Existing Curb Ramp
- 2 Existing Sidewalk
- 3 Relocated Ex. Shade Structure
- 4 Gate
- 5 Fence
- 6 Open-Air Shelter Structure
- 7 Bench
- 8 Concrete Pavement
- 9 Playground
- 10 Splashpad
- 11 Lawn
- 12 Lawn Hillside
- 13 Seating Stones



# Next Steps

- Current survey running through **May 7, 2026**
  - [Survey link](#)
  - Also located on the table tents
- Design refinement
- Public Input Meeting #2: **May 2026** (tentative)
  - Discuss the revised designs
- [Project Website](#)

# Public Input:

- Look over the designs around the room
- Place a dot sticker on what theme and layout you like best
- Write what makes you feel welcome in your parks
- Please ask us any questions you have!



Take the survey!



Thank you!

