



**MADISON
PARKS**

Eastmorland Park Playground Replacement

EASTMORLAND PARK

Discussion Items

- Existing Equipment
- Playground Location
- Playground Surfacing
- Fundraising
- Playground Design – Option A
- Playground Design – Option B
- Playground Design – Option C



EASTMORLAND PARK- EX. PLAYGROUND EQUIPMENT



EASTMORLAND PARK- EXISTING



City of Madison Playground Options Surfacing

City of Madison Playground Surfacing Options Comparison

Recycled Shredded Rubber

- Meets U.S. Access Board's ADA Accessibility Guidelines for Play Areas
- Meets CPSC fall height requirements
- Softer play surface material
- Provides alternative use for recycled tires
- Sandalwood/brown color-coated to reduce heat impact compared to non-coated black recycled rubber
- Higher initial cost, lower maintenance cost
- Needs to be topped off every 5 years depending on site conditions and use
- Non-biodegradable
- Thaws fast, playgrounds available throughout the year

Engineered Wood Fiber Mulch

- Meets U.S. Access Board's ADA Accessibility Guidelines for Play Areas
- Meets CPSC fall height requirements
- Not as soft as recycled shredded rubber
- Created by the City from fallen trees and limbs that would otherwise be chipped for mulch
- More likely to get mold and mildew spores
- Lower initial cost, higher maintenance cost
- Needs to be topped off every 1 to 3 years depending on site conditions and use
- Biodegrades
- Thaws slowly, playground use limited during winter conditions



Waltham Park- Rubber



Dudgeon School Park- Wood

Playground Design

- 2-5 year age range
- Consolidate equipment to 1 location
- Path extension
- Likes triple slide
- Purple and sky (blue) colors
- Burke Playground Vendor



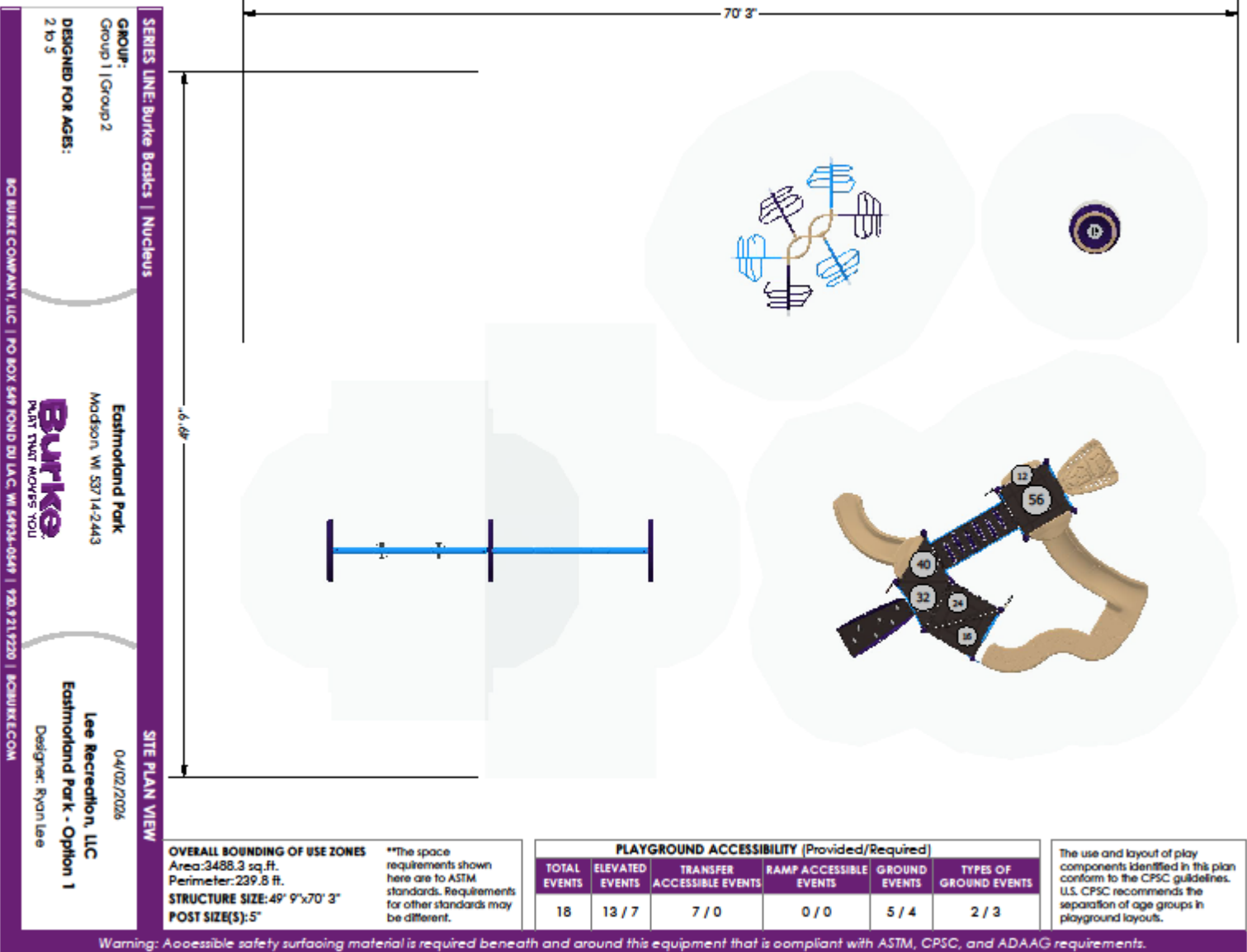
Playground Design Option A



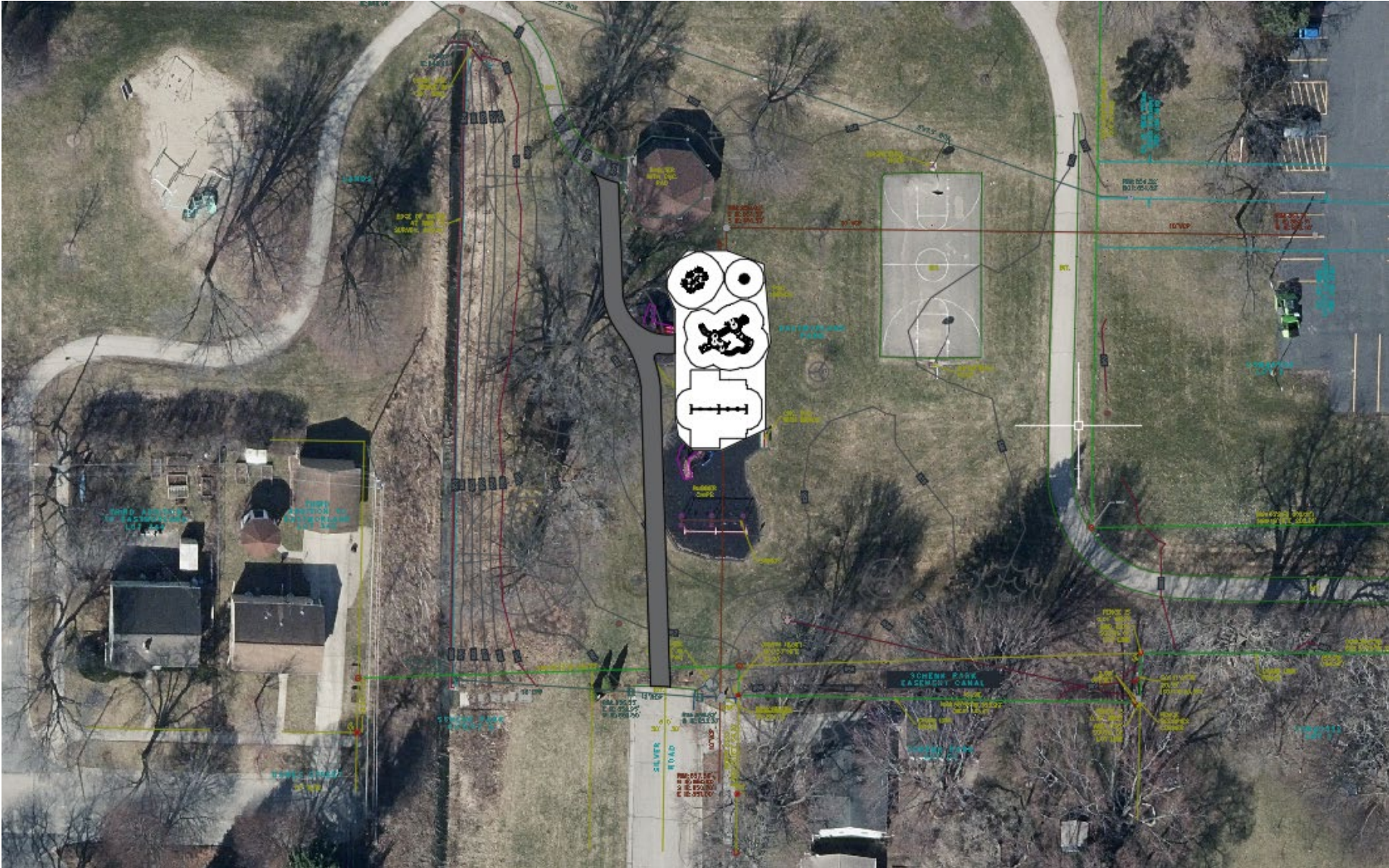
Playground Design Option A



Playground Design Option A



Playground Design Option A



Playground Design Age 2-5 Option B

**MADISON
PARKS**



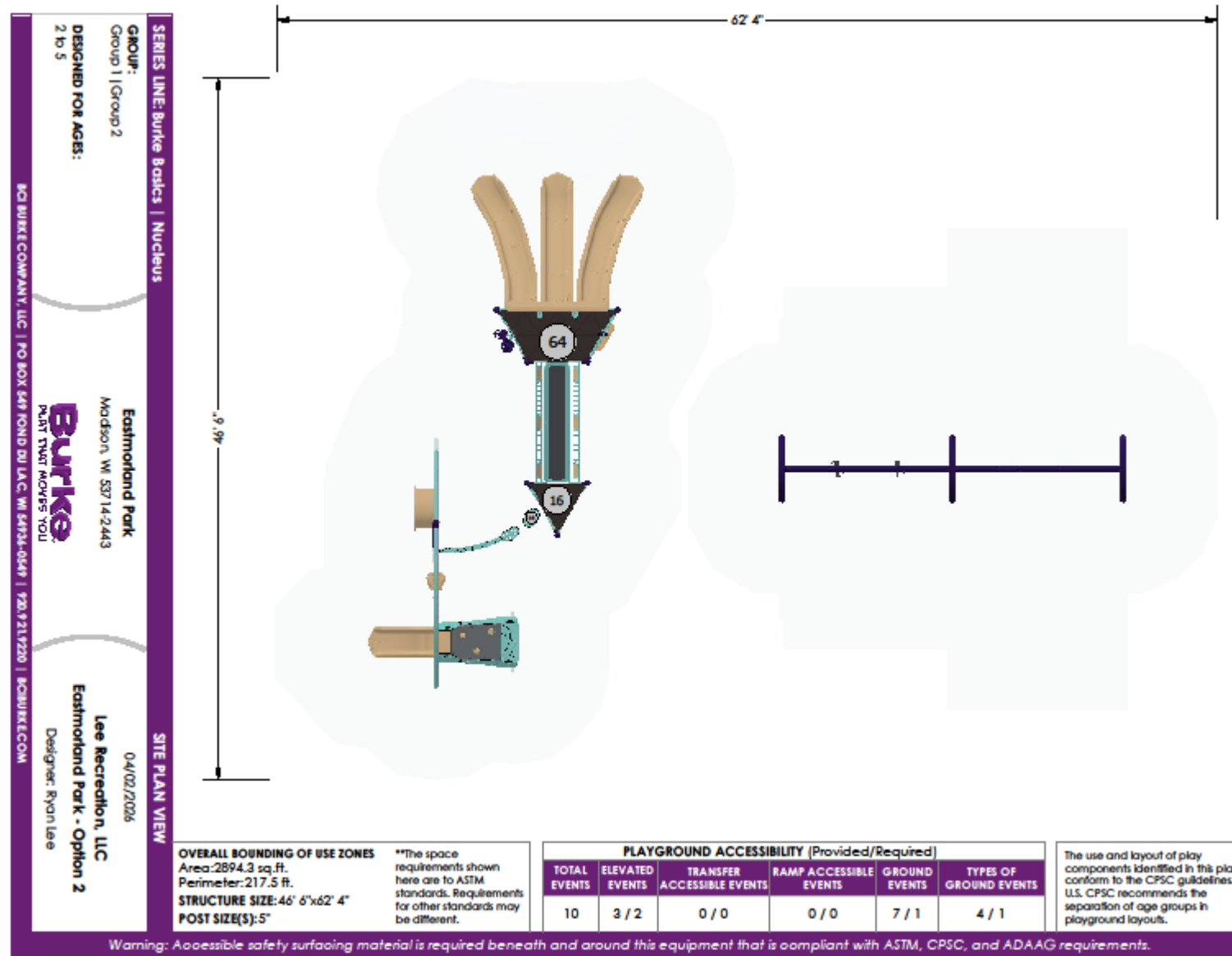
Playground Design Option B



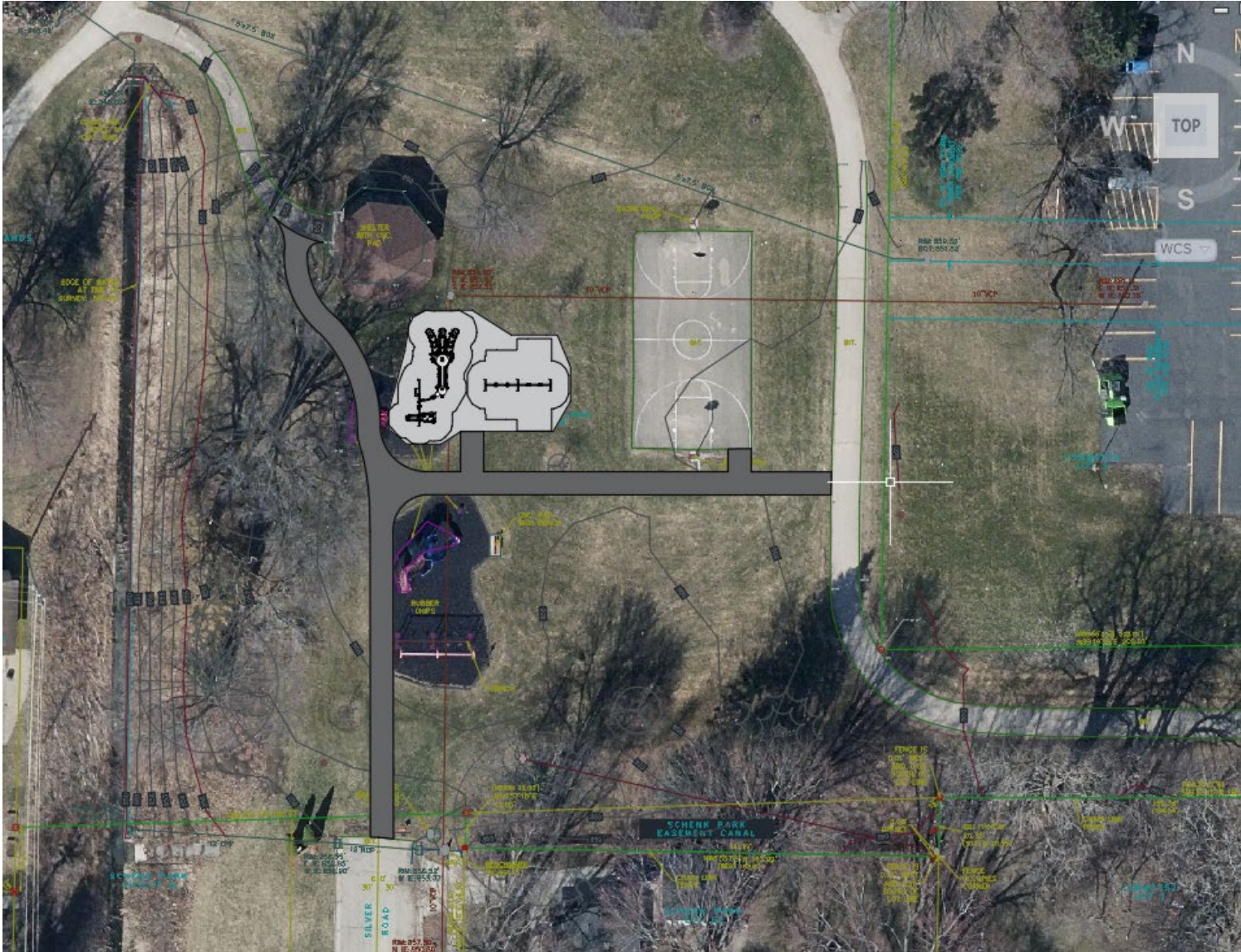
Playground Design Option B



Playground Design Option B



Playground Design Option B



Playground Design Age 2-5 Option C

**MADISON
PARKS**



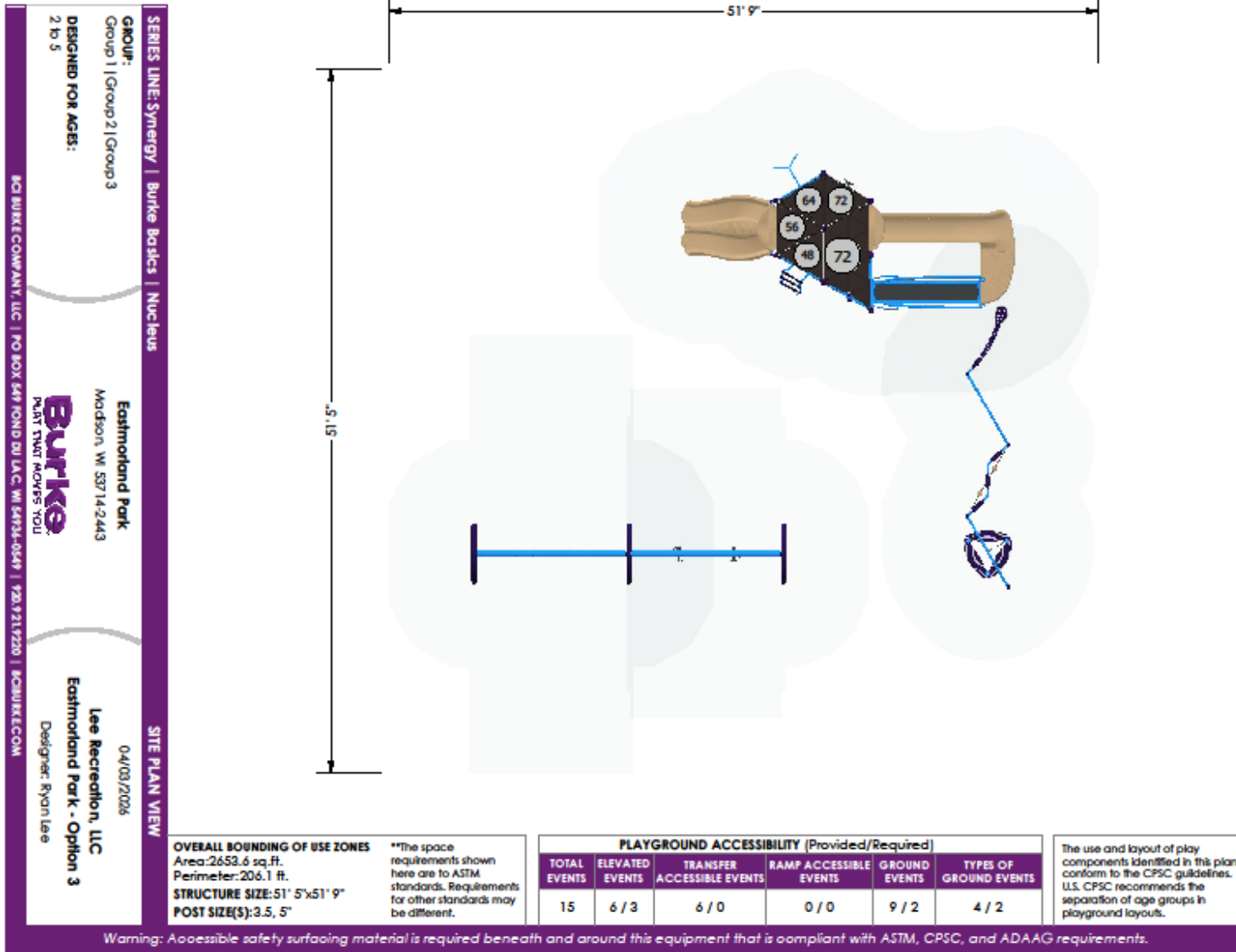
Playground Design Option C



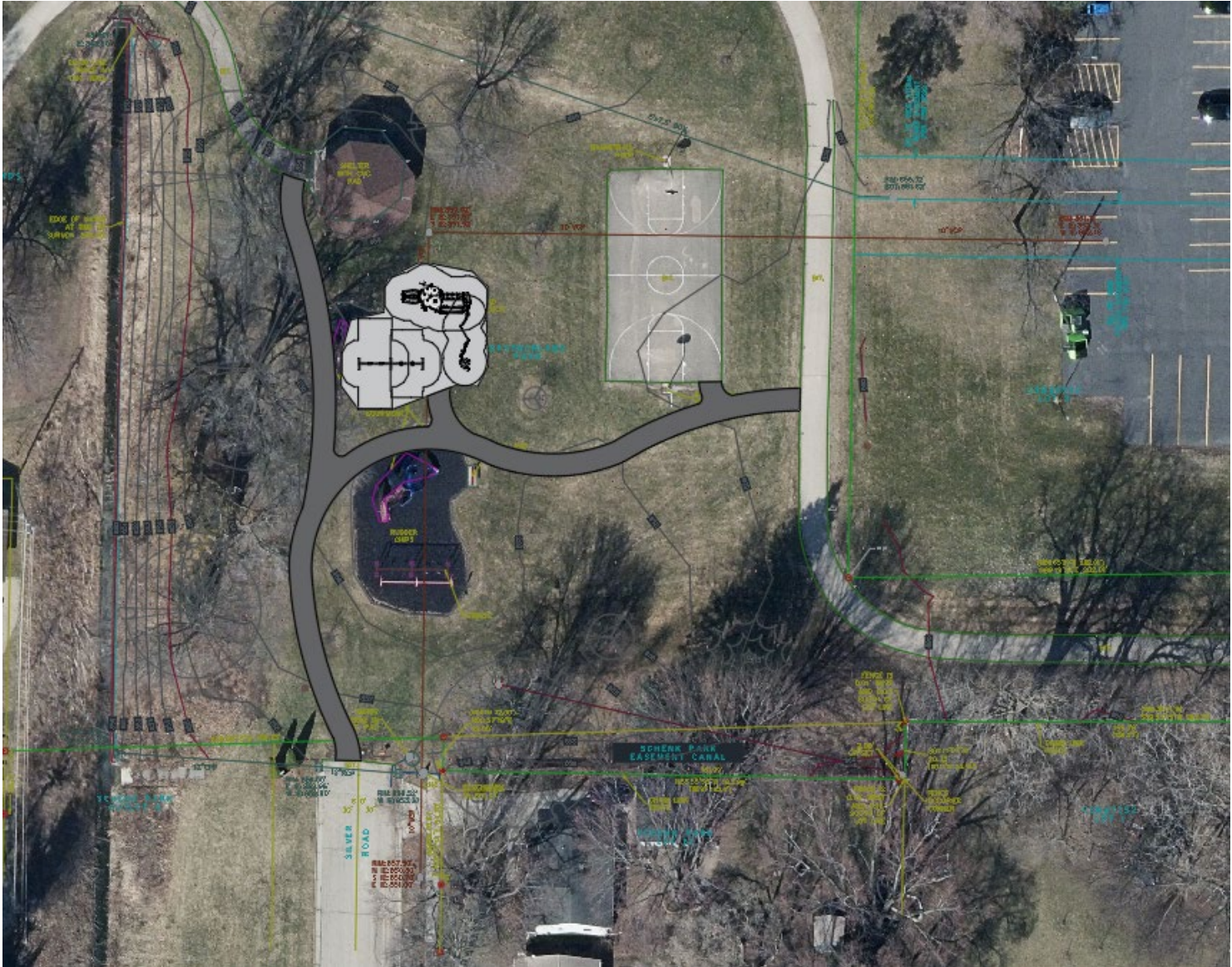
Playground Design Option C



Playground Design Option C



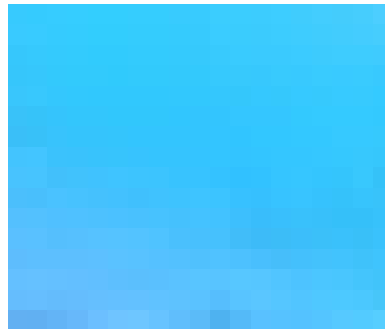
Playground Design Option C



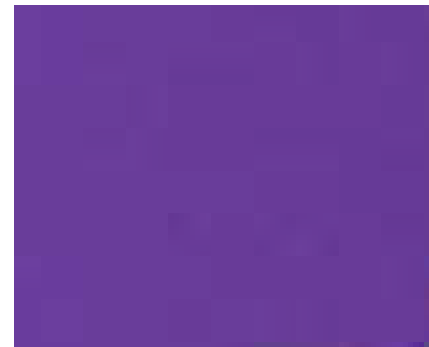
Color Selection



Or



+



Playground Selection

Option A



Option B



Option C



If additional input is needed, staff will reach out to meeting attendees via email.

Construction is anticipated to begin in the fall of 2026. Specific dates will be posted on the project page when they are available.

**Additional information related to this project is posted on the Parks Project Portal, here:
<https://www.cityofmadison.com/parks/projects/eastmorland-park-playground-improvements>**

**Contact Emma Krug, project manager, with additional questions or comments.
(608) 263-6850 or ekrug@cityofmadison.com**