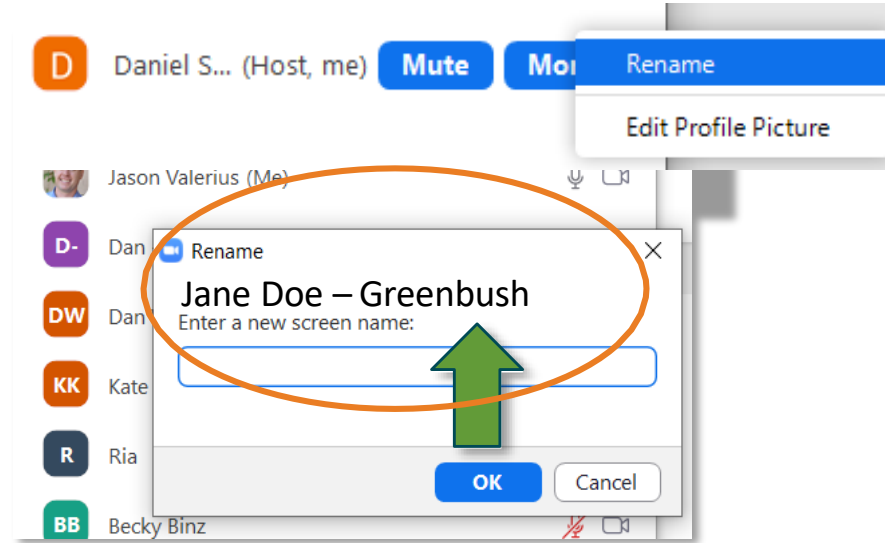


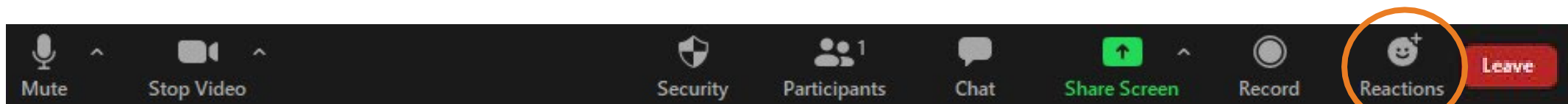
WHILE YOU ARE WAITING FOR THE MEETING TO START

- Check to see your name is correct.
 - The name must match the name you used to register for this meeting.
 - You can edit it if needed



Meeting Logistics

- All participants should remain muted during the presentation. Please only unmute if called on.
- Please use the “Raise Hand” button if you have a question. We will take questions during discussion sessions.
- This meeting will be recorded and available online to view later.



DISCLAIMER

This meeting is being recorded.

It is a public record subject to disclosure.

By continuing to be in the meeting, you are consenting to being recorded and consenting to this record being released to public record requestors.

play
**MADISON
PARKS**

SYCAMORE PARK MASTER PLANNING UPDATE EFFORT



Public Meeting #3
Zoom Meeting
03/30/2023



INTRODUCTION

Adam Kaniewski, City of Madison Parks Division Landscape Architect




WELCOME

Thanks for coming, we're looking forward to working with you to update the Master Plan for Sycamore Park! We want to hear your thoughts and ideas, so to make sure everyone has an equal chance to speak...

- We address all comments/questions during discussion periods and at the end of the presentation.
- No disparaging remarks about others' comments.
- If you are not comfortable speaking tonight, please call or email

play
**MADISON
PARKS**

TONIGHT'S GOALS



What are we talking about?
Park Classifications
Review of master planning process

What is there now?
Review of existing park uses and history

Draft Master Plan Presentation
Public Input

Now what?
Board of Park Commissioners

play
**MADISON
PARKS**

PARK CLASSIFICATIONS

Community Park (Sycamore Park)

Typically greater than 20 acres, these parks serve a broader purpose than a neighborhood park. They focus on meeting community-based recreation needs, as well as preserving unique landscapes and open spaces.

Neighborhood Park

Greater than 5 acres, neighborhood parks remain the basic unit of the park system. These parks serve as the recreational and social focus of the neighborhood.

Mini Park

Fewer than 5 acres and used to address limited, isolated, or unique recreational needs.

MASTER PLANNING

What is it?

- Dynamic long-term planning document that provides a framework for future park development and improvements.
- Establish the general location recommendations for desired amenities and resource protection.
- The identified improvements are often implemented in phases, with each phase requiring further design development and public engagement before construction.

Questions answered by a master plan: What is going to happen, where-ish, when-ish, and about how much will it cost?

A 10,000 foot view!

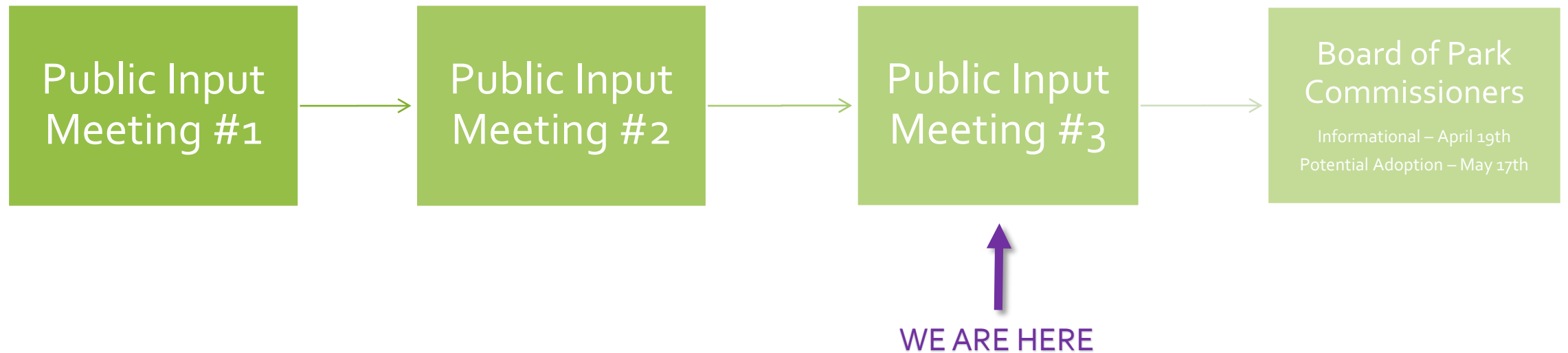
MASTER PLANNING

A master plan does NOT:

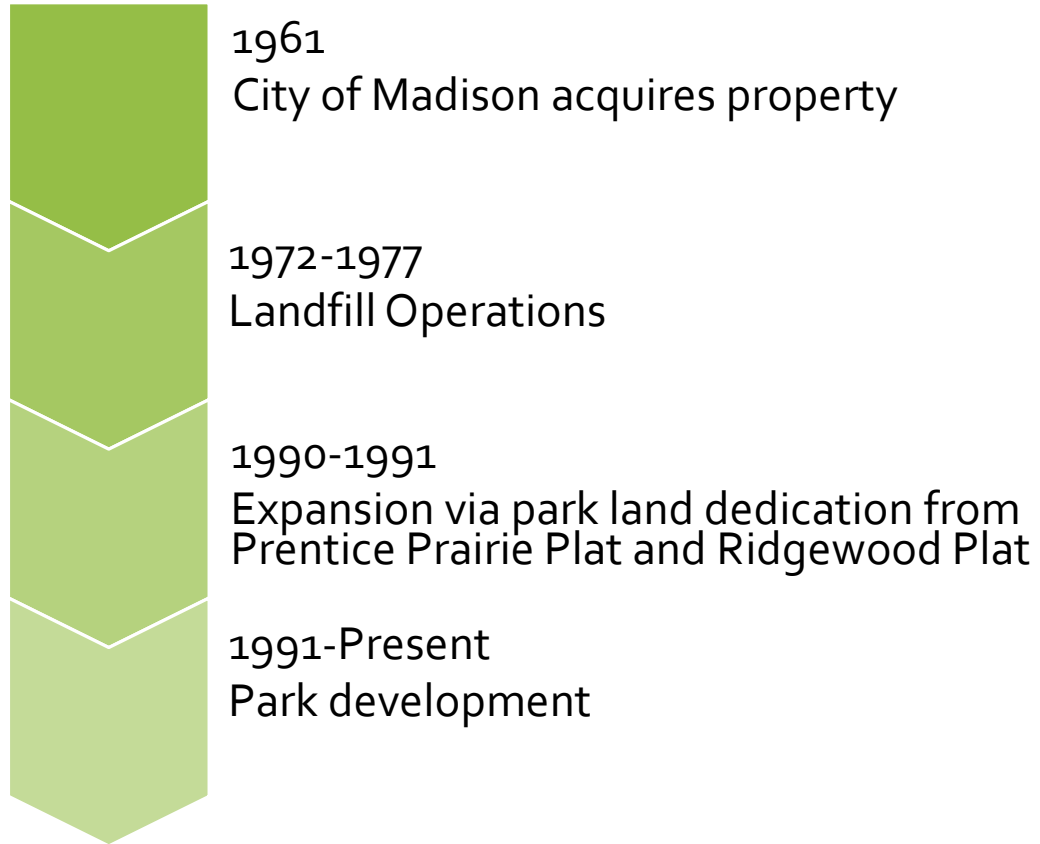
- Specify specific materials or finishes
- Designate exact locations
- Include a planting plan or tree management plan
- Contain construction drawings (which include information like dimensions, colors, products, quality requirements, etc.)

Questions NOT answered by a master plan: Who is going to build it, when (exact date), and how much will it really cost?

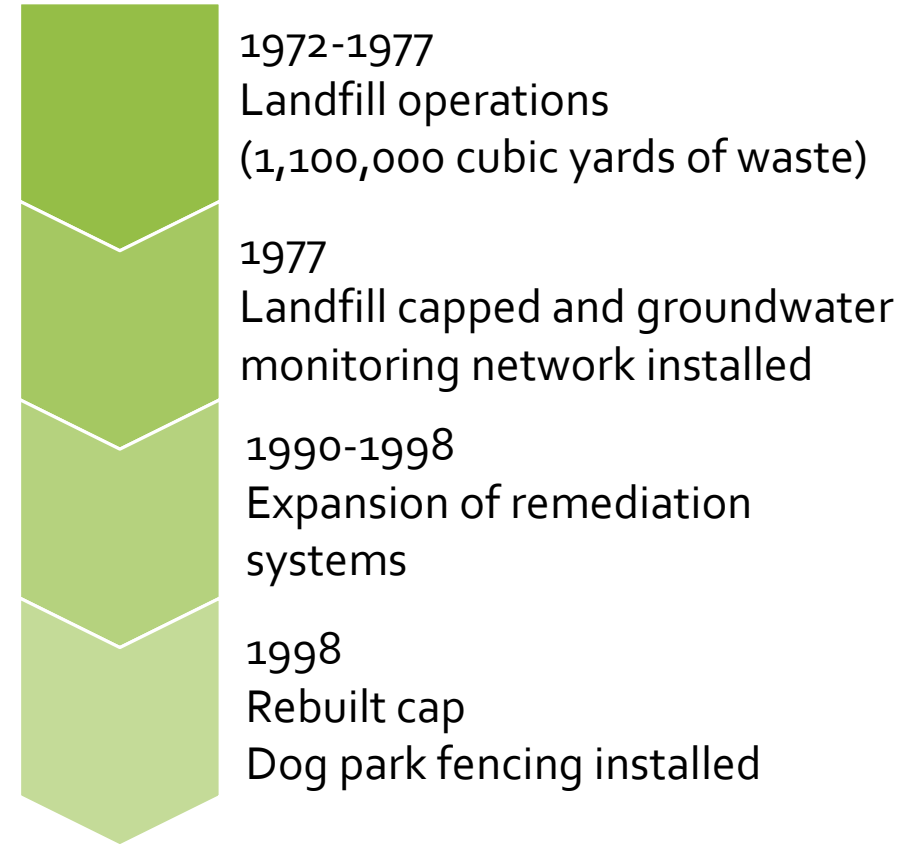
MASTER PLAN PROCESS



HISTORY



Landfill History



THROUGH THE YEARS...

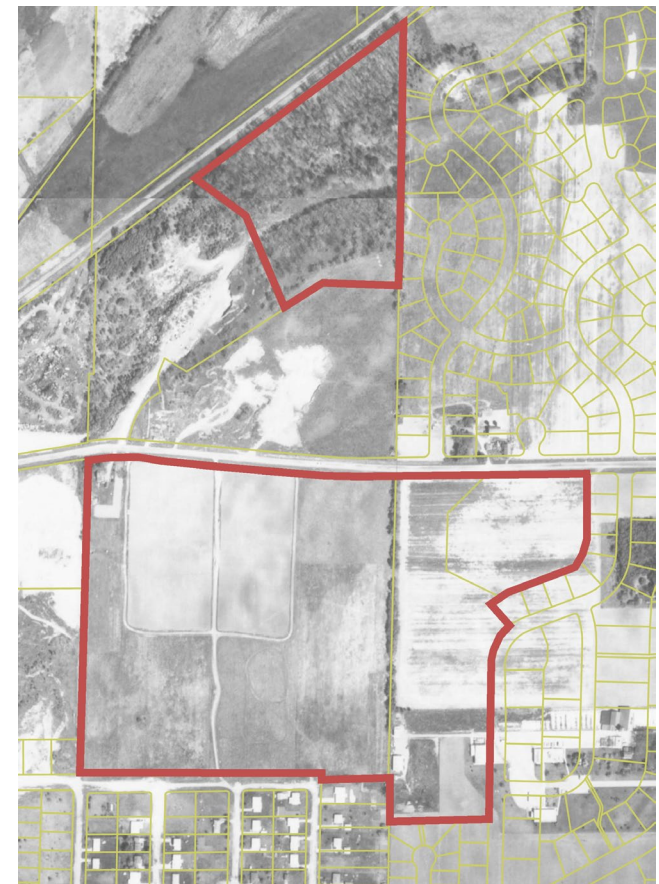
1937



1955



1968



THROUGH THE YEARS...

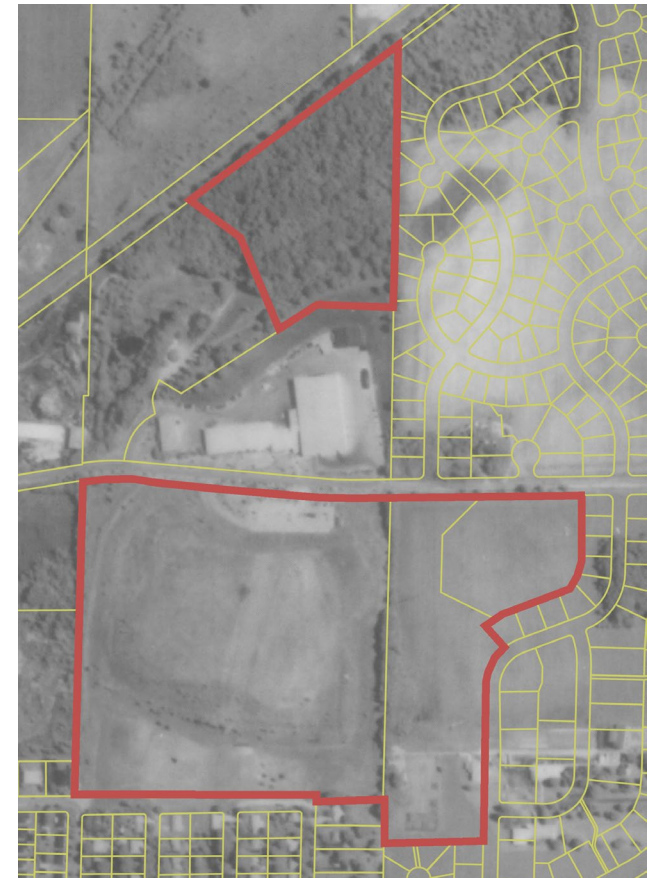
1974



1976



1987



THROUGH THE YEARS...

1995



2005



2017



EXISTING CONDITIONS

- Aerial
- Existing Uses
- Topography
- Landfill
- Surrounding Area Park Amenities



E
X
I
S
T
I
N
G

U
S
E
S



SURROUNDING AREA PARK AMENITIES



Reindahl Park

- Shelter/Restrooms
- Full Basketball Court
- 8 Tennis Courts
- Playground
- Play Fields
- Splash Pad
- Community Gardens

Mayfair Park

- Full Basketball Court
- Playground
- Backstop/Play Field
- Sun Shelter

Surrounding Park Areas

Reindahl Park –	90 acres
Mayfair Park –	3 acres
Glacier Hill Park –	15.5 acres
Hiestand Park and Woods –	58 acres
Honeysuckle Park –	4 acres
Sycamore Park -	71 acres

Total 241.5 acres

Glacier Hill Park

- Full Basketball Court
- Playground
- Sun Shelter
- Play Fields

Hiestand Park and Woods

- Disc Golf Course
- Full Basketball Court
- Playground
- Sun Shelter
- Play Fields/Backstops
- Wooded Area Trails

Honeysuckle Park

- Full Basketball Court
- Playground
- Play Fields/Backstops

MEETING #2 SUMMARY

Comments

- Dog Park – would like shade in the summer, wind break in the winter, outer loop to have mulch
- Is there potential to acquire the wooded area to the west?
- Would like connection from north to south to go around west side of streets facility.
- Restroom will be necessary with increased park use. Can it just be a smaller restroom building and not full shelter?
- Would like vehicle use on path addressed when path is improved.
- Support for pumptrack and singletrack trails
- North woodlands – preserve native trees while removing invasives. Address safety near train tracks while accounting for wildlife movements
- Would like accessible features added to the playground

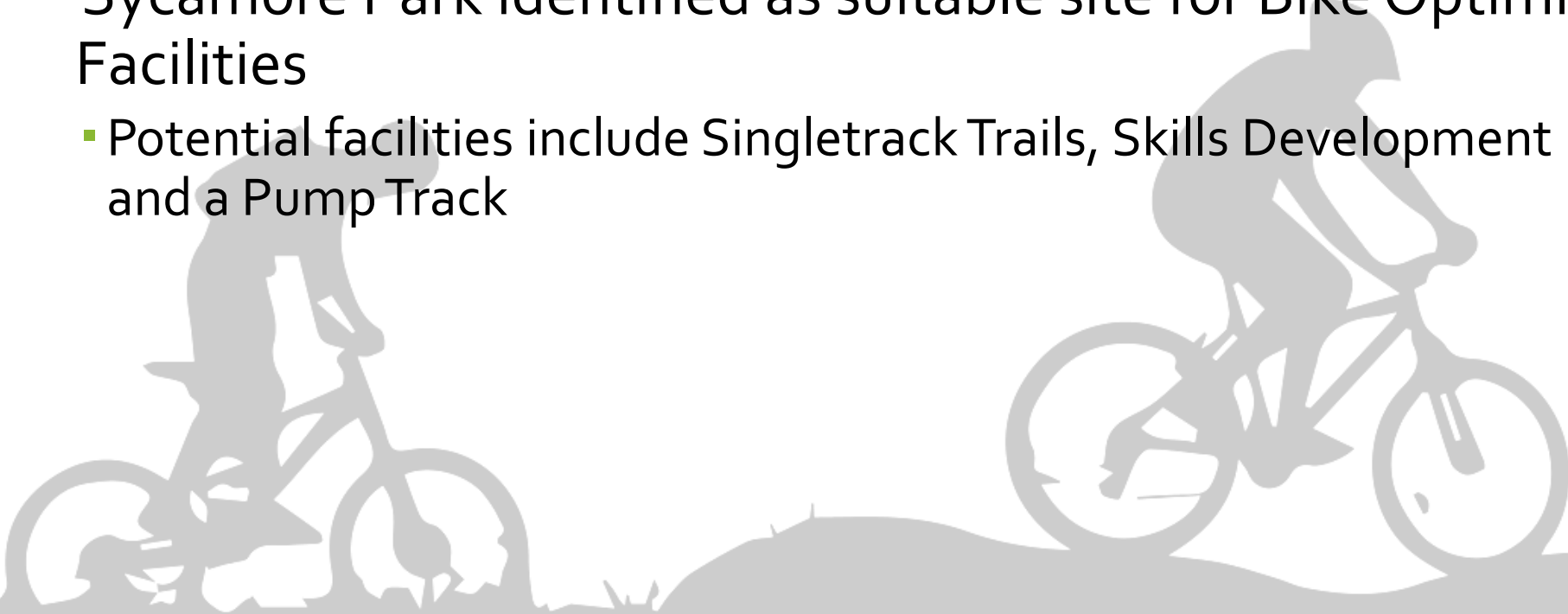
SUN SHELTER

play
**MADISON
PARKS**



MADISON BICYCLE ADVENTURE TRAIL NETWORK PLAN (MADBAT)

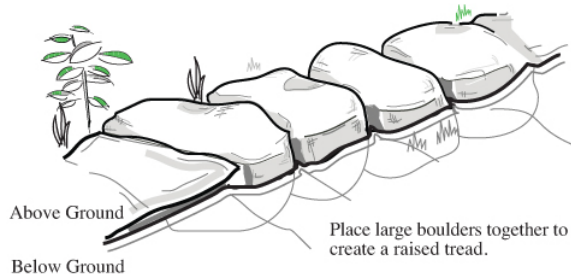
- Plan for a citywide system of multi-use, bike optimized, off-road trails.
- Sycamore Park identified as suitable site for Bike Optimized Facilities
 - Potential facilities include Singletrack Trails, Skills Development Features, and a Pump Track



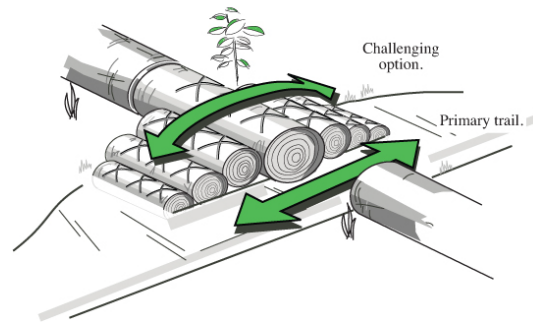
Singletrack Bike Trails

Singletrack has a width that varies from just a little wider than your shoulders on up to a track that's just wide enough for two bikes to pass. Many singletrack trails are open to one-way travel and wind their way through the best terrain that the landscape offers. Some singletrack trails also offer challenge elements as seen below.

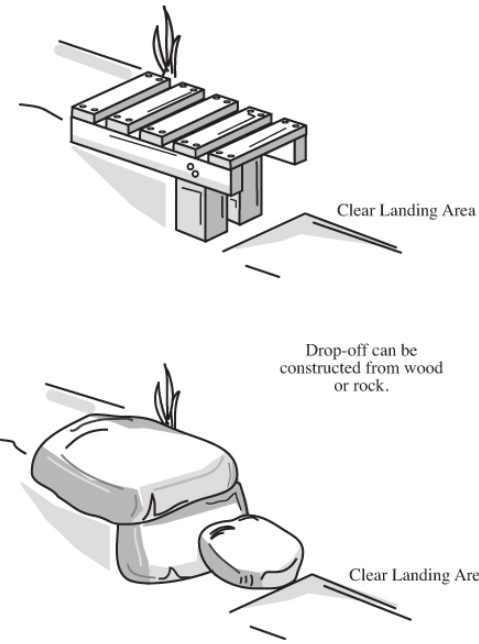
Boulder Causeway



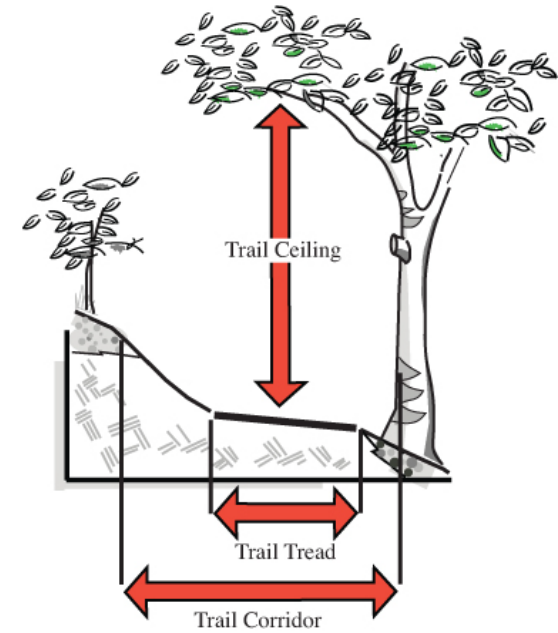
Creating Optional Lines



Drop-Off



Trail Corridor



Pump Track and Skills Track

Photos of Aldo Leopold Park



DRAFT MASTER PLAN





Sycamore Park Master Plan List of Master Plan Improvements

- 1 Off-road mountain bike trails. Trail segments to be designed for varying abilities and also intended for use by existing mountain bike teams from Madison East and Madison Lafollete High Schools.
- 2 Improvements to existing dog park including trail stabilization, add seperated entrance to small dog area, add dual gate entrance to existing entrance in southeast corner, add lighting focused on entrance area, explore adding alternatives to add shade in summer and wind block in winter.
- 3 Area for asphalt pump track.
- 4 Drainage improvements for section of path adjacent to playground and basketball court.
- 5 Area for new sun shelter including new accessible path from main bike/pedestrian path.
- 6 Non-mowed / naturalized area with native grasses and forbs.
- 7 New restroom building to include restrooms, water access, and lighting.
- 8 Non-mowed / naturalized area with native grasses and forbs.
- 9 Potential trail connections from Sycamore Ave. to the woodland parcel. The eastern connection is preferred as the most direct route. However, both options should be explored and creating both connections would create a beneficial loop for bike and pedestrian connectivity.
- 10 Evaluate existing social trails and build purpose-built hiking trails and mountain biking trails. Develop a management plan for the woodlands.
- 11 Improve access and signage to woodlands from N Thompson Drive.



DRAFT MASTER PLAN

LEGEND

-  Existing Path
-  Existing Natural Surface Path
-  Proposed Off-Road Bike Trail Corridors
-  Proposed Off-Road Bike Trail Loops



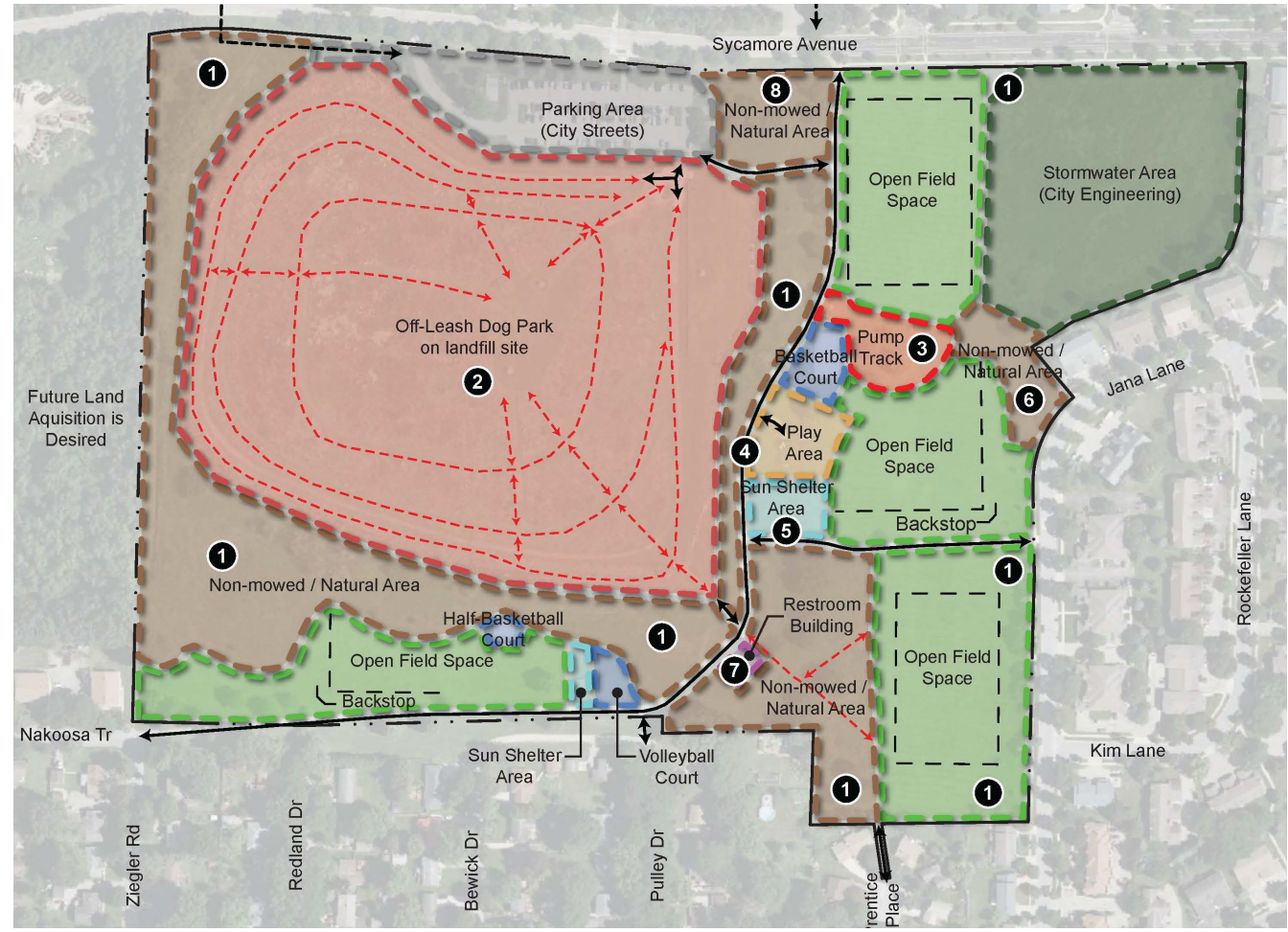
1 Off-road mountain bike trails. Trail segments to be designed for varying abilities and also intended for use by existing mountain bike teams from Madison East and Madison Lafollete High Schools.

DRAFT MASTER PLAN (SOUTH)

- 1** Off-road mountain bike trails. Trail segments to be designed for varying abilities and also intended for use by existing mountain bike teams from Madison East and Madison Lafollete High Schools.
- 2** Improvements to existing dog park including trail stabilization, add seperated entrance to small dog area, add dual gate entrance to existing entrance in southeast corner, add lighting focused on entrance area, explore adding alternatives to add shade in summer and wind block in winter.
- 3** Area for asphalt pump track.
- 4** Drainage improvements for section of path adjacent to playground and basketball court.
- 5** Area for new sun shelter including new accessible path from main bike/pedestrian path.
- 6** Non-mowed / naturalized area with native grasses and forbs.
- 7** New restroom building to include restrooms, water access, and lighting.
- 8** Non-mowed / naturalized area with native grasses and forbs.

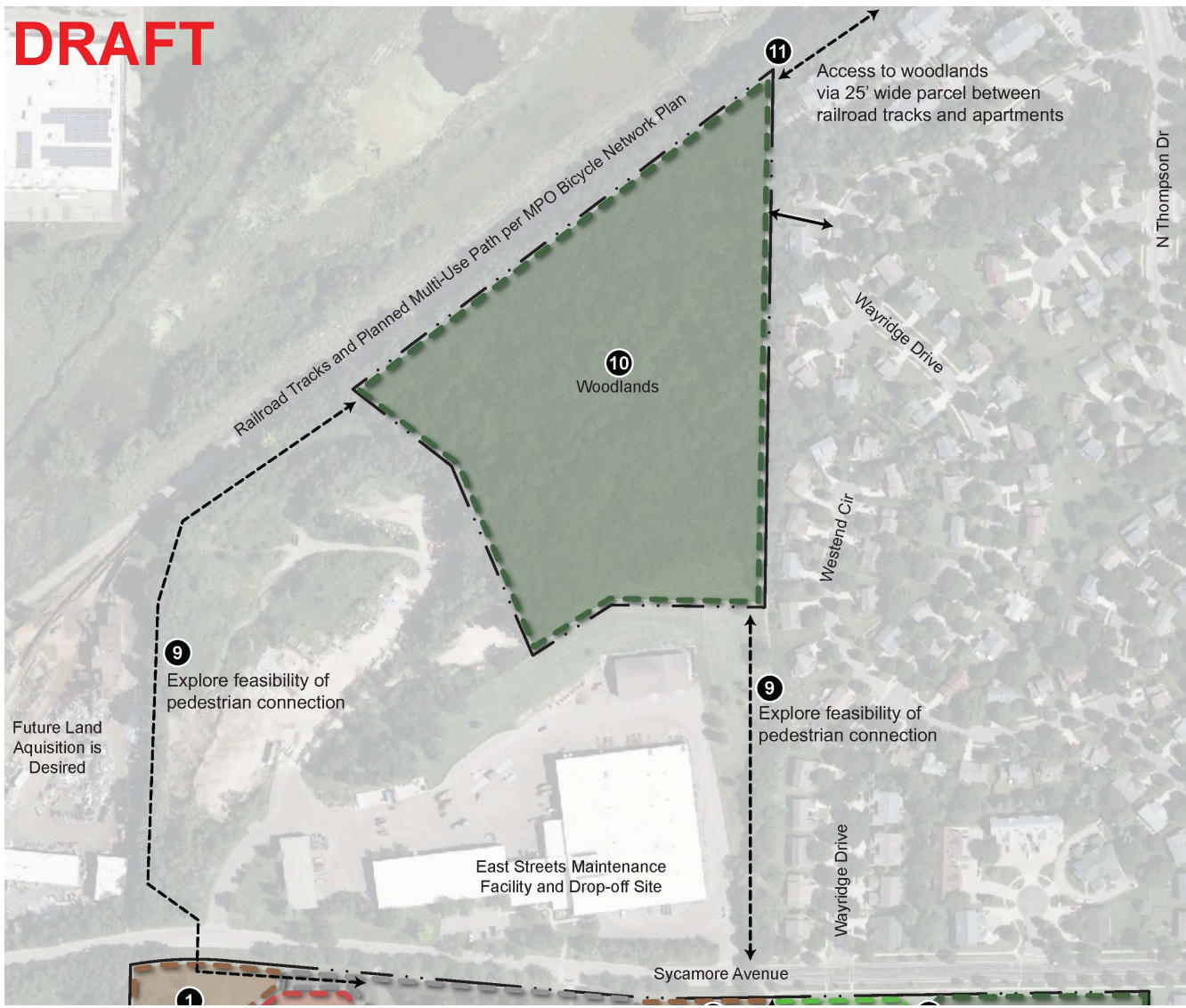
LEGEND

-  Existing Path
-  Existing Natural Surface Path



DRAFT MASTER PLAN (NORTH)

- 9** Potential trail connections from Sycamore Ave. to the woodland parcel. The eastern connection is preferred as the most direct route. However, both options should be explored and creating both connections would create a beneficial loop for bike and pedestrian connectivity.
- 10** Evaluate existing social trails and build purpose-built hiking trails and mountain biking trails. Develop a management plan for the woodlands.
- 11** Improve access and signage to woodlands from N Thompson Drive.



PUBLIC INPUT LISTENING PERIOD



NEXT STEPS

- Board of Park Commissioners
 - April 19th – Informational Presentation
 - May 17th – Consideration for Plan Adoption
- Budget Allocation
 - After plan adoption, parks will work to include funding for improvements at Sycamore Park in future Capital Improvement Budgets

Watch the City Parks “Project Portal” website for project updates!
<https://www.cityofmadison.com/parks/projects/sycamore-park-master-plan>



COMMENTS?

CONTACT US:
ADAM KANIEWSKI
OFFICE: (608) 261-4281
EMAIL: AKANIEWSKI@CITYOFMADISON.COM

