



Madison Metro Transit System

1101 East Washington Avenue
Madison, Wisconsin, 53703
Administrative Office: 608 266 4904
Fax: 608 267 8778



April 20, 2006

TO: Plan Commission
FROM: Timothy Sobota, Transit Planner, Metro Transit
SUBJECT: **8240 Mineral Point Road – Wisconsin Community Bank – Speedway project**

Metro Transit has reviewed the subject development and has the following comments.

MAJOR OR NON-STANDARD REVIEW COMMENTS (Comments which are special to the project and/or may require additional work beyond a standard, more routine project.)

1. The applicant shall install a concrete passenger boarding pad on the east side of Junction Road, approximately 120 feet north of Mineral Point Road, within the area of the driveway apron proposed to be abandoned. The concrete pad shall occupy the full distance of the terrace, measure 6 feet in width parallel to the street, and lie flush between the sidewalk and the top of curb.
2. The developer shall consult with City of Madison Engineering and Traffic Engineering staff to determine if a bus cut-out bay shall be installed to accommodate a bus stopped at this location.
3. The developer shall include the location of these passenger amenities on the final documents filed with their permit application so that Metro Transit may review and approve the design.

GENERAL OR STANDARD REVIEW COMMENTS

In addition, we offer the following General or Standard Review Comments:

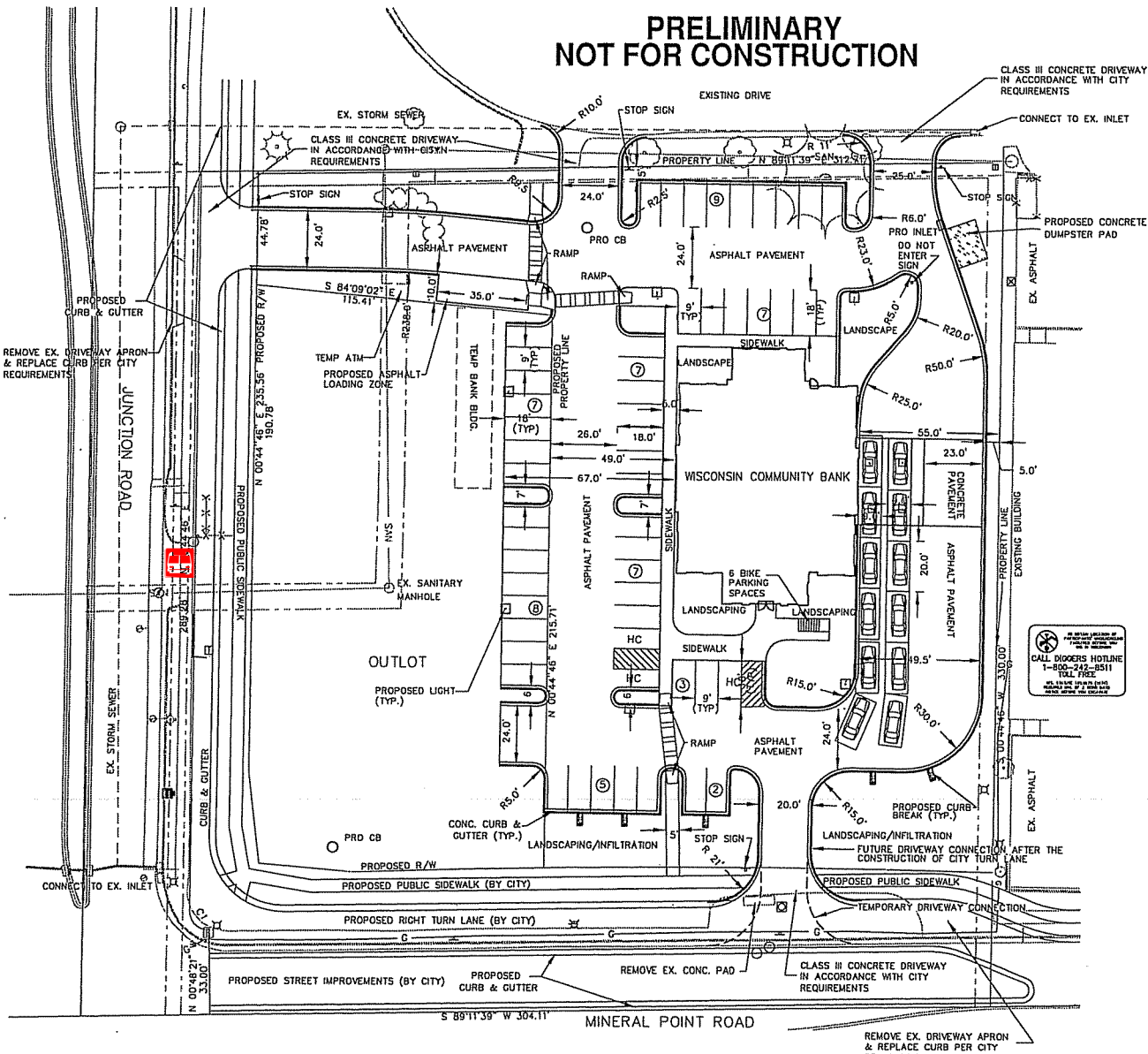
4. Metro Transit operates bus service seven days a week along Junction Road.
5. Metro Transit requests to sign and review final documents submitted for this project.

Please contact Tim Sobota, Metro Transit at 261-4289
or by email at <tsobota@cityofmadison.com>
if you have questions regarding the above items.

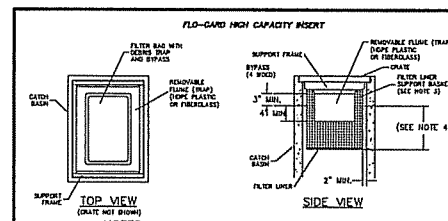
CC: Project contact person, Ron Trachtenberg: rtrachtenberg@murphydesmond.com (email)
City Traffic Engineering, Tom Walsh: twalsh@cityofmadison.com (email)
City Engineering, Janet Gebert: jgebert@cityofmadison.com (email)

Atch. Exhibit page "C103 Site Plan" [3/1/2006], notated with approximate amenity location

PRELIMINARY NOT FOR CONSTRUCTION



NOTE:
ALL SIDEWALK RAMPS SHALL BE CONSTRUCTED
IN ACCORDANCE WITH CITY OF MADISON SPECIFICATIONS
INCLUDING DETECTABLE WARNING FIELDS



- NOTES:
1. 10-GARD™ High Capacity™ inserts are available in sizes to fit most industry standard catch basins (see manufacturer chart). Custom sizes are available.
 2. Filter support frames must be constructed from stainless steel pipe. 2002 (black) heavy channel must be constructed from heavy polystyrene.
 3. Filter support frames must be constructed from a listed quality material. Minimum channel must be 1000 x 1000, no less than 1/4" thick, in accordance with ASTM A-36.
 4. Insert frames are available in standard depths of 12", 24", or 36" (order to capacity chart). Custom sizes may be specified.

| SITE AND BUILDING INFORMATION | |
|---|----------------|
| TOTAL LOT AREA: | 1.56 ACRES |
| BUILDING FOOTPRINT AREA: | 2,323 sq. ft. |
| TOTAL SQUARE FOOTAGE OF BUILDING: | 11,579 sq. ft. |
| HANDICAPPED ACCESSIBLE PARKING STALLS REQUIRED: | 3 |
| HANDICAPPED ACCESSIBLE PARKING STALLS PROVIDED: | 3 |
| PARKING STALLS REQUIRED: | 46 |
| TOTAL PARKING STALLS PROVIDED: | 51 |

| PARKING LOT PLAN SITE INFORMATION BLOCK | |
|--|-------------------------|
| Site Address: | 303 South Street |
| Map Reference: | See Project Description |
| Number of building stories (above grade): | 1 |
| Building height: | 10 |
| Clear (line of construction from structure or addition): | TYPE & R.D. |
| Total square footage of building: | 11,579 sq. ft. |
| Use of property: | COMMERCIAL |
| Or area square feet of site: | 1,560,000 sq. ft. |
| Or area square feet of total area: | 1,560,000 sq. ft. |
| Number of employees in production: | 100 |
| Number of employees in professional: | 100 |
| Capacity of parking structure or assembly: | 100 |
| Number of bicycle stalls shown: | 0 |
| Number of parking stalls: | 51 |
| Other use: | 0 |
| Accessible: | 3 |
| Total: | 51 |
| Number of trees shown: | 0 |

brandpartners

BrandPartners
10 Main Street Rochester, NH 03839
Phone: 603.335.1400 Fax 603.335.4542

MAYO corporation
ENGINEERS SURVEYORS ARCHITECTS PLANNERS
500 GRAND CANYON DRIVE, MADISON, WI 53719-1044
E-MAIL: info@mayocorporation.com

CLIENT/PROJECT
WISCONSIN COMMUNITY BANK

INFORMATION
Path: M:\WB1105\ENG\CIVIL-EP\WB11BASE.DWG
Issue Date: 03-01-06
Drawn By: GVP
Checked By:
Revision:

- 1.
- 2.
- 3.
- 4.
- 5.
- 6.
- 7.
- 8.
- 9.

TITLE
**WISCONSIN COMMUNITY BANK
SITE PLAN**

SCALE
0 20 40 60

©2005 BrandPartners Field, Inc. All rights reserved.
Information, material, and designs in this document are
proprietary to and owned by BrandPartners Inc. and may not
be disclosed to any third party, reproduced, printed on a
global computer information network, or distributed in any
way without the written consent from BrandPartners Inc.

C103