



Madison Metro Transit System

1101 East Washington Avenue
Madison, Wisconsin, 53703
Administrative Office: 608 266 4904
Fax: 608 267 8778



January 25, 2008

TO: Plan Commission

FROM: Timothy Sobota, Transit Planner, Metro Transit

SUBJECT: **89 East Towne Mall – Buffalo Wild Wings**

Metro Transit has reviewed the subject development and has the following comments.

MAJOR OR NON-STANDARD REVIEW COMMENTS (Comments which are special to the project and/or may require additional work beyond a standard, more routine project.)

1. The developer shall install and maintain all infrastructure necessary to suitably relocate the existing East Towne Mall bus stop.
2. The new bus stop location must be situated in the area between the Mall Access off Eagan Road south of East Towne Boulevard adjacent Culver's Restaurant and the Mall Access to East Towne Boulevard opposite Independence Lane so as to ideally decrease the distance currently traveled through the parking lot and thereby avoiding impacts to the existing schedules.
3. The new bus stop infrastructure shall include the following items at a minimum:
 - An accessible, raised, pedestrian access from the Food Court Mall Entrance adjacent Barnes & Noble to a bus stop boarding island (i.e. curb ramps & crosswalks).
 - A concrete or other reinforced slab for a stopped bus, not blocking any travel lanes, measuring at least 10' wide by 150' long.
 - A passenger boarding zone, located adjacent the front door a stopped bus, clear of any landscape items and measuring 6' wide (parallel to travel lane) by 8' deep (from back of curb). The remaining passenger boarding island parallel to the bus slab must be clear at least 5' deep.
 - In the immediate vicinity of the passenger boarding zone: A trash receptacle, a shelter with enclosed bench (128 square feet or larger), additional benches or other seating amenity (10 people or more); and vertical separation between the passenger waiting area and any adjacent parking stalls (i.e. 18"-36" high wall or other landscaping elements) – for the length of the island.
 - Additional pedestrian facilities as necessary to connect this mall entrance and the passenger boarding island to the public street and sidewalk network, specifically including marked crosswalks and curb ramps to cross the ring road towards East Towne Boulevard.
4. The developer shall include the design and locations of the proposed elements of the new bus stop on the final documents filed with their permit application so that Metro Transit may review and approve the design.

GENERAL OR STANDARD REVIEW COMMENTS

In addition, we offer the following General or Standard Review Comments:

5. Metro Transit operates bus service seven days a week along the Eagan/Lien Road frontage of East Towne Mall, with a bus stop facing the entrance corridor adjacent Boston Store and Sears. The developer currently maintains a shelter with enclosed bench at this location.

January 25, 2008

Page 2

6. The developer may use the existing shelter structure in combination with a second structure in order to achieve the square footage requirement for sheltered waiting space on the passenger boarding island.
7. Metro Transit serves East Towne Mall with routes from four directions (downtown, North Transfer Point, East Transfer Point, High Crossing/City View). Currently up to three buses (40 foot vehicles) might stack along the frontage of the Boston Store at a given time, thereby dictating the length requirement outlined above.
8. Metro Transit has fielded concerns from East Towne mall management and Boston Store officials in the past regarding the current bus stop location, related to the impacts caused in part by the limited space available for both buses and passengers to stage along this frontage of the shopping mall.
9. Metro Transit coordinated a similar bus stop relocation design with a conditional use application at West Towne Mall in 2006 - to the general benefit of bus passengers, Metro transit operations, and Mall management.
10. Metro Transit requests to sign and review final documents submitted for this project.

Please contact Tim Sobota, Metro Transit at 608-261-4289
or by email at <tsobota@cityofmadison.com>
if you have questions regarding the above items.

CC: Project contact person, Derrick Matter: dmatter@cmarch.com

Atch.

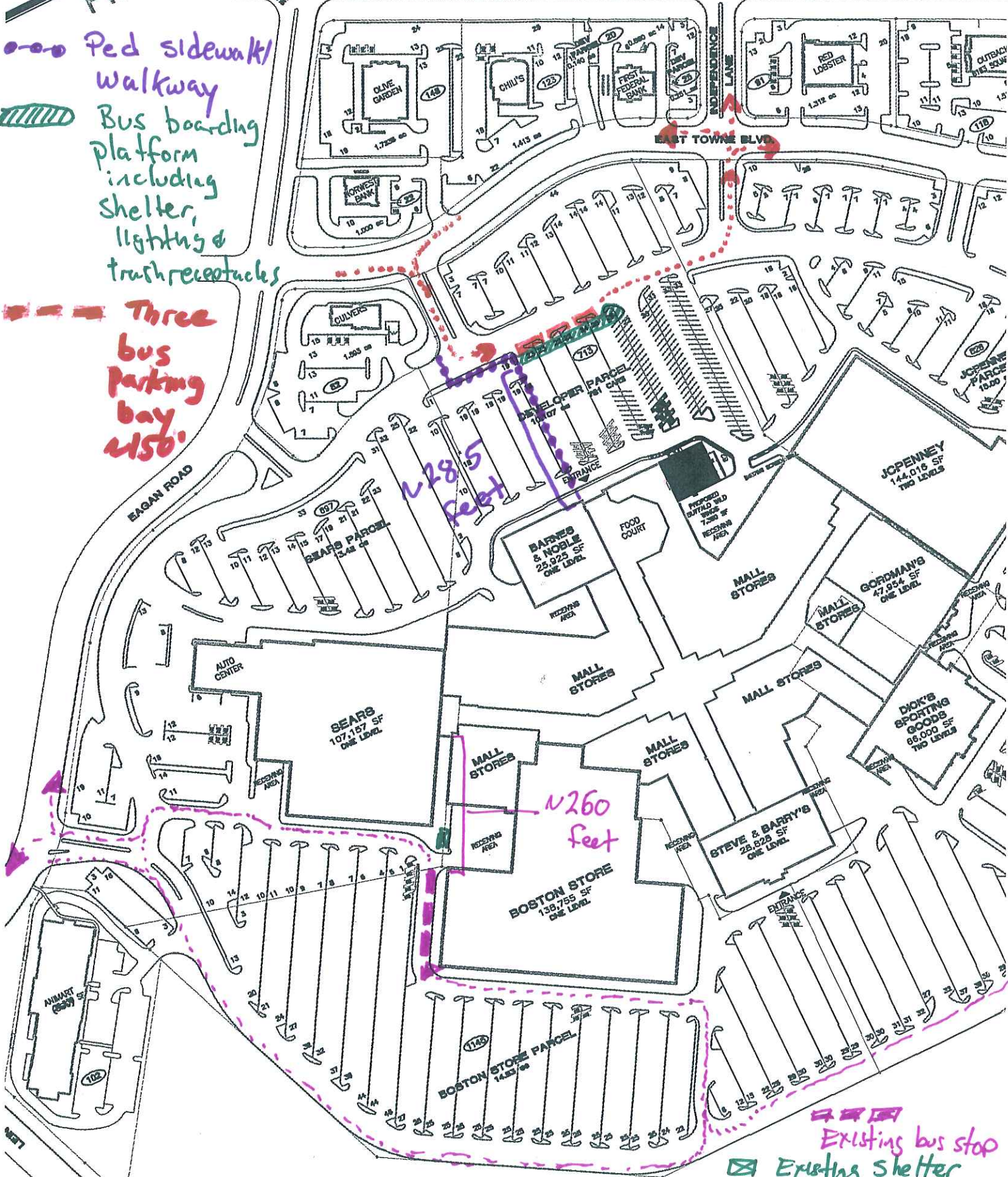
- Sketch on site plan showing locations of pedestrian and bus infrastructure upgrades at East Towne Mall, existing bus stop, and present/proposed bus access paths (not to scale)
- Site plan showing recently completed West Towne Mall bus stop design adjacent Gammon Road frontage, between Odana Road and Gammon Place access points.

PRELIMINARY NOT

U.S. 121 EAST WASHINGTON AVENUE

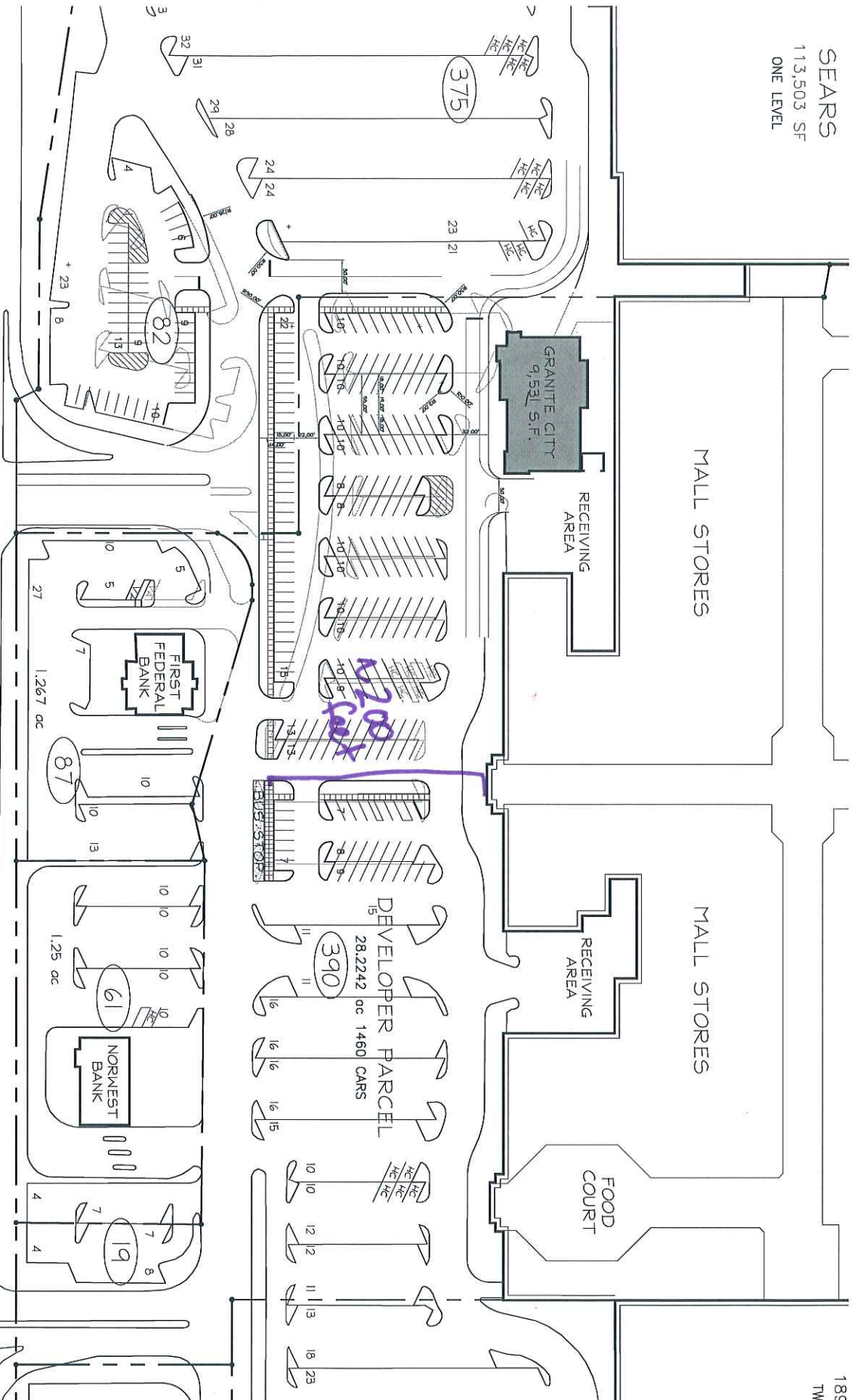
o-o-o Ped sidewalk/
walkway
Bus boarding
platform
including
shelter,
lighting &
trash receptacles

Three
bus
parking
bay
4150'



Existing bus stop
Existing shelter

SEARS
113,503 SF
ONE LEVEL



185
TW

SIGNALIZED INTERSECTION

GANNON ROAD

ROAD

Proposed Site Plan



148 West 9th Street, #200
Des Moines, IA 50319
216.781.9144 fax 216.781.6564
www.karnc.com



West Towne Mall
Madison, WI

Original Issue Date: 28 FEB 2006
Revisions: No. Description

NO.	DESCRIPTION

Authentified User:
 Design Development
 Program
 Siting
 Building Form
 Circulation

Printed Date: 28 FEB 2006

Sheet Description:
Proposed Site Plan

Project No.: 020115
 Project Name: SP
 Scale: 1/8"=1'-0"

Author: [Signature]
 Check: [Signature]

SP
 Phase: 02

Draftsman: [Signature]