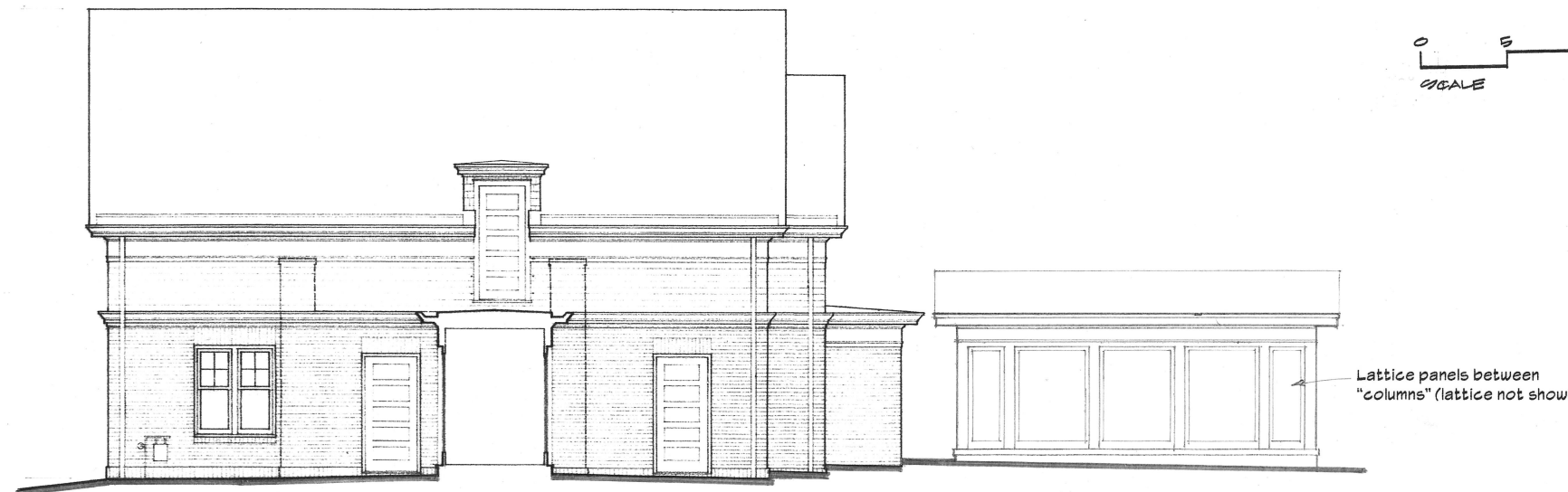






**WEST ELEVATION**



**Carport South Elevation**

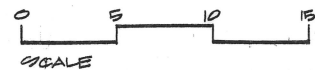
**GARAGE/ADU SOUTH ELEVATION**

**FINISH MATERIALS and COLORS**

- BRICK:** Vertical-scored clay brick - dark red-brown to match existing house
- SECOND FLOOR SIDING:** Cedar bevel siding (or equal), 4.5" exposure, for painted finish - Color: medium gray-green
- SOUTH DORMER SIDING:** Shingle siding for painted finish - Color: medium gray-green to match roofing
- ROOFING:** 'Architectural' asphalt shingles - Color: gray-green to match slate roofing on existing house
- TRIM:** Cedar trim boards with cedar moldings. Proportions and details similar to but simpler than existing house trim, for painted finish - Color: white
- PORCH COLUMN:** Square, tapered cedar or composite column with simplified capital and base trim, for painted finish - Color: white
- WINDOWS:** Marvin aluminum clad wood windows with simulated divided lights - Color: white
- FRENCH DOORS:** Marvin aluminum clad wood French doors with simulated divided lights - Color: medium red-brown door in white frame
- ADU ENTRY DOOR:** Therma-Tru fiberglass 3/4 lite entry door with simulated divided lights, painted finish - Color: medium red-brown in white frame
- GARAGE WALK DOORS:** Therma-Tru fiberglass 5-panel doors, for painted finish - Color: medium red-brown door in white frame
- GARAGE OVERHEAD DOORS:** Fiberglass, composite or metal sectional doors, for painted finish - Color: medium red-brown door in white frame
- SOUTH DORMER DOOR:** Therma-Tru fiberglass 5-panel door, for painted finish - Color: medium red-brown door in white frame
- AIR COND. LATTICE PANELS:** Cedar or Azek lattice panels in frames, for painted finish - Color: medium red-brown lattice in white frame
- NORTH DECK RAILING:** Custom wrought iron for painted finish - Color: white or black
- GUARDRAIL OVER CONNECTOR ROOF (Mech. Service Access to Attic):** Thin steel top rail with 1/4" thick steel posts and 2 strands cable rail infill to be as inconspicuous as possible - Color: dark bronze



EXISTING GARAGE @ CONNECTOR



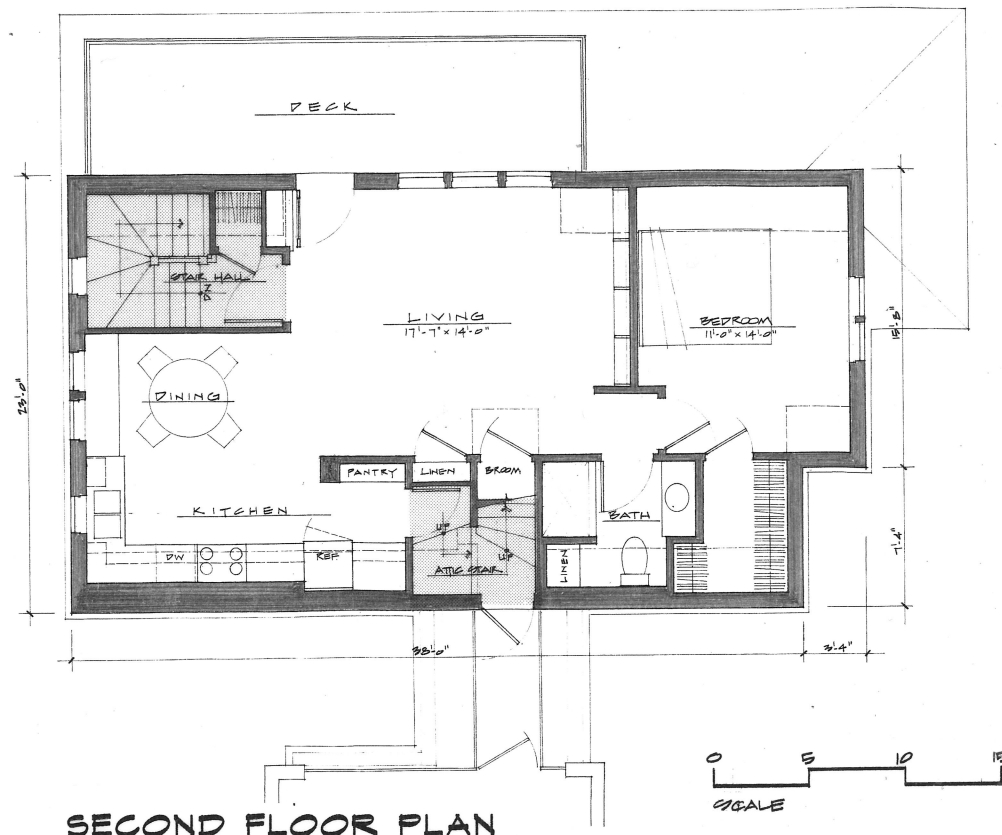
GARAGE/ADU NORTH ELEVATION



EAST ELEVATION

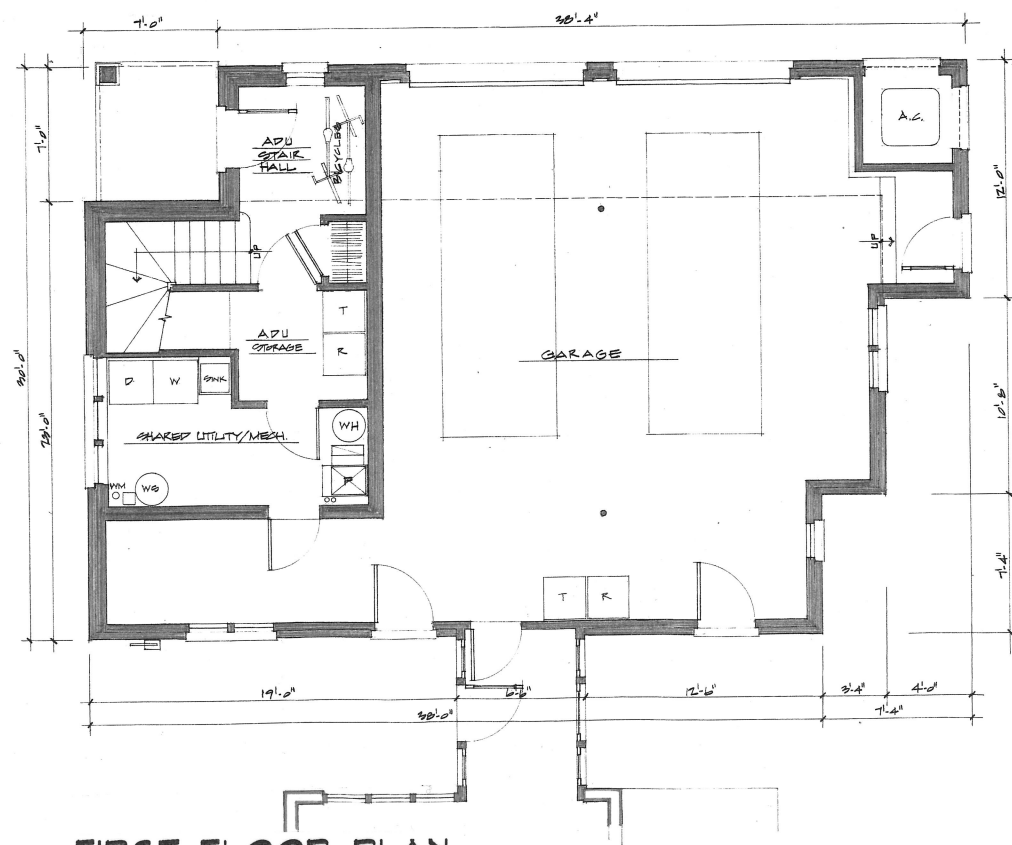
**FINISH MATERIALS and COLORS**

- BRICK: Vertical-scored clay brick - dark red-brown to match existing house
- SECOND FLOOR SIDING: Cedar bevel siding (or equal), 4.5" exposure, for painted finish - Color: medium gray-green
- SOUTH DORMER SIDING: Shingle siding for painted finish - Color: medium gray-green to match roofing
- ROOFING: 'Architectural' asphalt shingles - Color: gray-green to match slate roofing on existing house
- TRIM: Cedar trim boards with cedar moldings. Proportions and details similar to but simpler than existing house trim, for painted finish - Color: white
- PORCH COLUMN: Square, tapered cedar or composite column with simplified capital and base trim, for painted finish - Color: white
- WINDOWS: Marvin aluminum clad wood windows with simulated divided lights - Color: white
- FRENCH DOORS: Marvin aluminum clad wood French doors with simulated divided lights - Color: medium red-brown door in white frame
- ADU ENTRY DOOR: Therma-Tru fiberglass 3/4 lite entry door with simulated divided lights, painted finish - Color: medium red-brown in white frame
- GARAGE WALK DOORS: Therma-Tru fiberglass 5-panel doors, for painted finish - Color: medium red-brown door in white frame
- GARAGE OVERHEAD DOORS: Fiberglass, composite or metal sectional doors, for painted finish - Color: medium red-brown door in white frame
- SOUTH DORMER DOOR: Therma-Tru fiberglass 5-panel door, for painted finish - Color: medium red-brown door in white frame
- AIR COND. LATTICE PANELS: Cedar or Azek lattice panels in frames, for painted finish - Color: medium red-brown lattice in white frame
- NORTH DECK RAILING: Custom wrought iron for painted finish - Color: white or black
- GUARDRAIL OVER CONNECTOR ROOF (Mech. Service Access to Attic): Thin steel top rail with 1/4" thick steel posts and 2 strands cable rail infill to be as inconspicuous as possible - Color: dark bronze



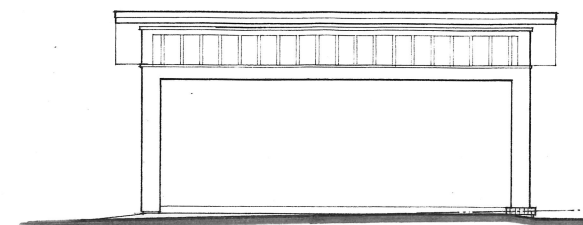
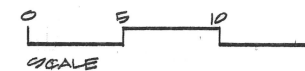
**SECOND FLOOR PLAN**

ADU Conditioned Space = 695 square feet  
(Areas not included in conditioned space shown shaded)

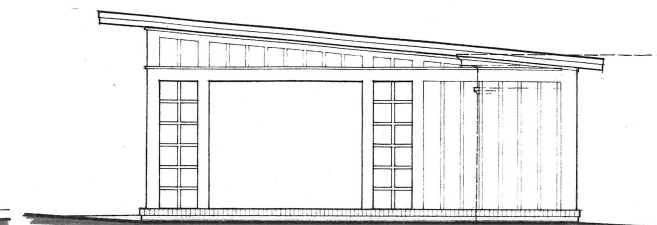


**FIRST FLOOR PLAN**

(ADU Stair Hall, ADU Storage and Shared Utility/Mech Room are not conditioned space but are within insulated building envelope)



**NORTH ELEVATION**



**WEST ELEVATION**

(east elevation mirror image)

**DETACHED CARPORT** (south elevation shown on page 2)

**CARPORT FINISH MATERIALS and COLORS**

**BRICK-FACED FOUNDATION:** Vertical-scored clay brick - dark red-brown to match existing house  
**SIDING on NORTH, EAST & WEST SIDES:** 3/4" smooth cedar plywood siding with cedar battens @ 12" O.C., for painted finish - Color: medium-dark gray-green  
**SIDING on SOUTH SIDE:** Smooth cedar plywood siding with lattice panels, for painted finish - Color: medium-dark gray-green with white painted lattice  
**TRIM (exterior & interior):** Smooth cedar fascia and trim boards with cedar moldings and lattice panels, for painted finish - Color: white  
**INTERIOR WALLS & CEILING:** MDO plywood with wood battens @ walls, for painted finish - Color: medium-dark gray-green  
**ROOFING:** EPDM rubber roofing system (not visible from ground level)