

A NORTH ELEVATION
1/8"=1'-0"

- NOTES:
- 1) LOUVERS BY HVAC CONTRACTOR.
 - 2) SEE ARCHITECTURAL AND SECURITY PLANS FOR WINDOW TYPES.
 - 3) HVAC CONTRACTOR TO PROVIDE FIVE (5) FT. PANEL SYSTEM WITH FIVE (5) PANELS PER FLOOR AND OPENING DENIES WITH SYSTEM.
 - 4) BRICK AT CURVED WALL TO BE FULL SIZE FOR PLAN.
 - 5) BRICK AT CURVED WALL TO BE FULL SIZE FOR PLAN.

© COPYRIGHT BY ALL RIGHTS RESERVED. NO PART OF THIS DRAWING OR ANY INFORMATION HEREON SHALL BE REPRODUCED OR TRANSMITTED IN ANY FORM OR BY ANY MEANS WITHOUT THE WRITTEN CONSENT OF DURRANT ARCHITECTS, INC.

Durrant Architects, Inc.



Architect: DURRANT ARCHITECTS
Structural Engineer: DURRANT ENGINEERS

Mechanical Engineer: DURRANT ENGINEERS

Electrical Engineer: DURRANT ENGINEERS

Revisors:

Project no. 9804

Date: 10/14/92

Drawn by: PBT

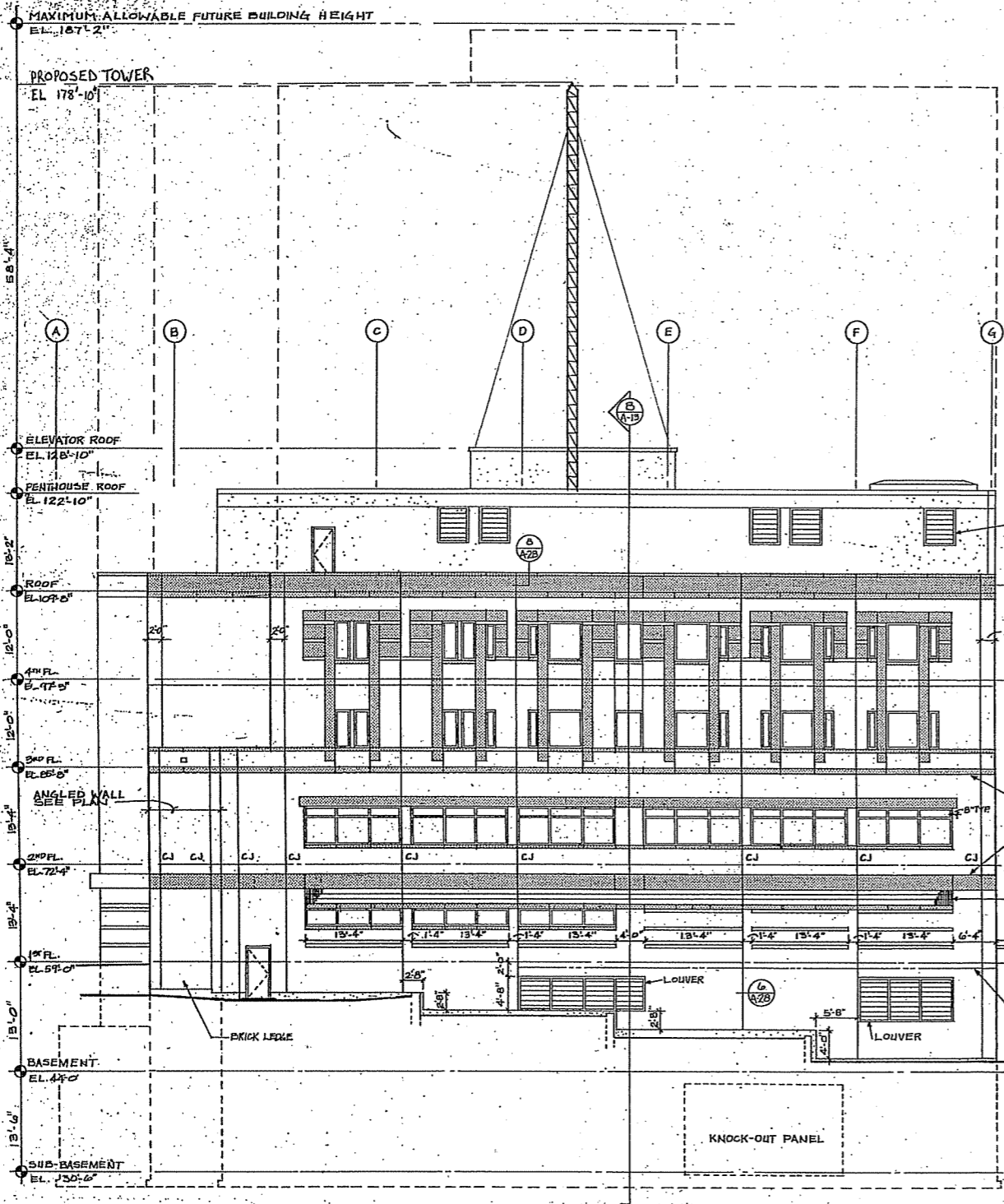
Checked by: KBR

Sheet Contents:
EXTERIOR ELEVATION NORTH

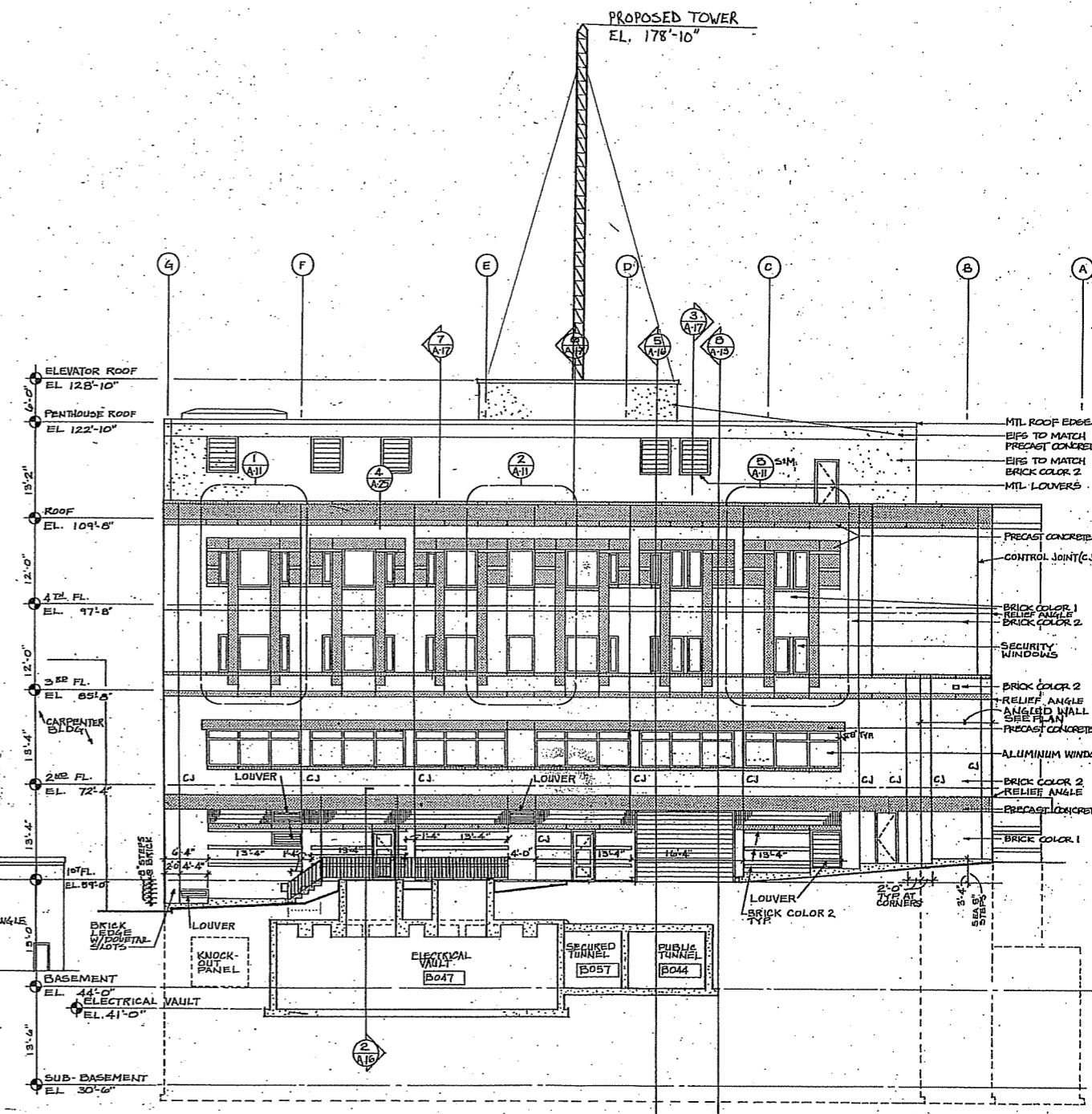
Sheet

A-9

23 of 172



B WEST ELEVATION
1/811-0



C EAST ELEVATION
1/811-0

NOTE:
 1) LOUVER BY HVAC CONTRACTOR
 2) SEE FOUNDATION AND SECURITY PLAN FOR WINDOW TYPES.
 3) AT CONTRACTOR OPTION, PROVIDE EXT. MTL PANEL SYSTEM IN LIEU OF PRECAST CONCRETE DETAILS WITH MTL SYSTEM.

© COPYRIGHT 2011 DARRANT ARCHITECTS INC. ALL RIGHTS RESERVED. NO PART OF THIS DOCUMENT SHALL BE REPRODUCED OR TRANSMITTED IN ANY FORM OR BY ANY MEANS WITHOUT THE WRITTEN CONSENT OF DARRANT ARCHITECTS, INC.

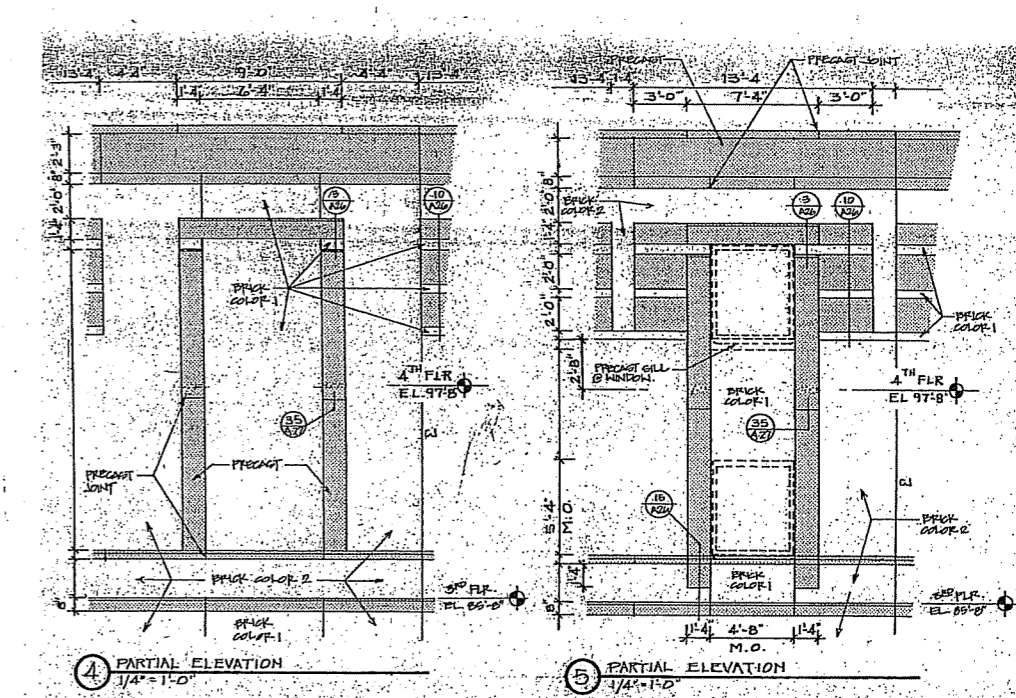
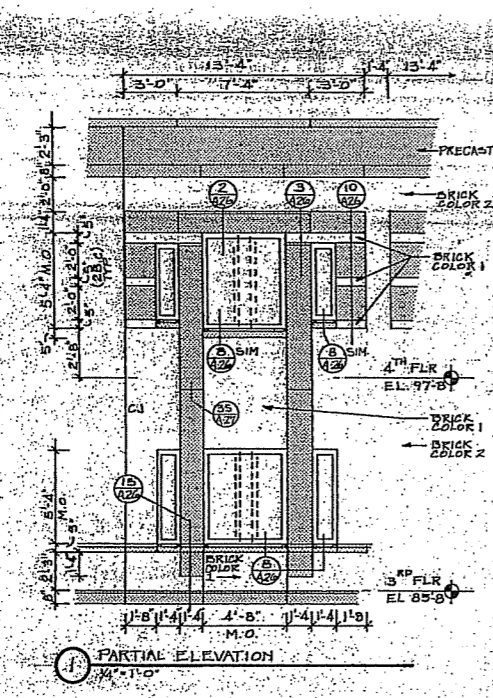
Darrant Architects Inc.

Architect: DARRANT ARCHITECTS
 Structural Engineer: DARRANT ENGINEERS
 Mechanical Engineer: DARRANT ENGINEERS
 Electrical Engineer: DARRANT ENGINEERS

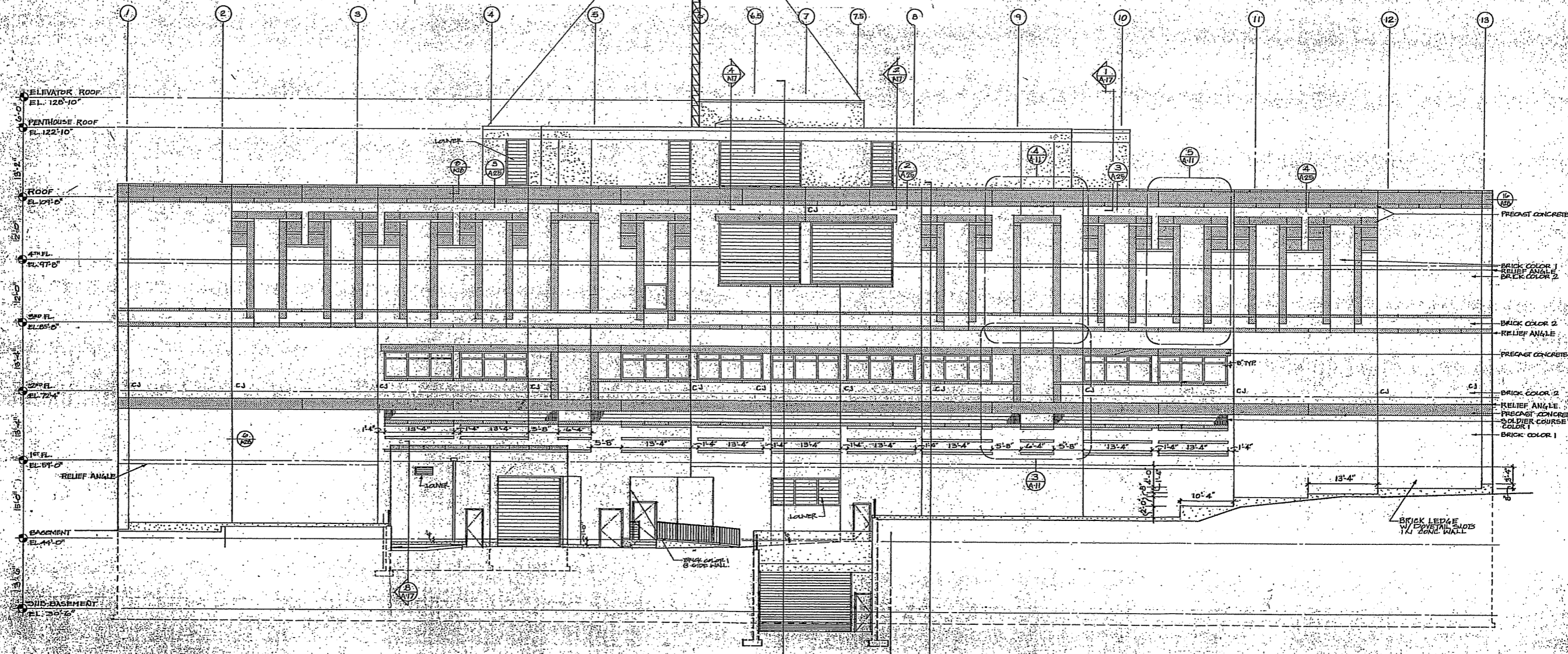
Revisions:

Project no. 9
 Date: 10/14/09
 Drawn by: PK
 Checked by: KJ

Sheet Contents:
 EXTERIOR ELEVATION WEST & EAST



PROPOSED TOWER
EL. 178'-10"



D SOUTH ELEVATION
1/4"=1'-0"

1) CONTRACTOR TO PROVIDE CONTRACTOR'S OWNERS' MANUAL AND SECURITY TRANS FOR ALL WINDOWS.
2) CONTRACTOR TO PROVIDE CONTRACTOR'S OWNERS' MANUAL AND SECURITY TRANS FOR ALL WINDOWS.
3) CONTRACTOR TO PROVIDE EXHIBIT A11 PANEL AND ALL DETAILS AT EXTERIOR OF WINDOWS AND DOORWAYS.
4) CONTRACTOR TO PROVIDE EXHIBIT A11 PANEL AND ALL DETAILS AT EXTERIOR OF WINDOWS AND DOORWAYS.
5) CONTRACTOR TO PROVIDE EXHIBIT A11 PANEL AND ALL DETAILS AT EXTERIOR OF WINDOWS AND DOORWAYS.

JAIL
 COUNTY
 MADISON, WISCONSIN

© 2008 BY ALL RIGHTS RESERVED. NO PART OF THIS DOCUMENT MAY BE REPRODUCED OR TRANSMITTED IN ANY FORM OR BY ANY MEANS, ELECTRONIC OR MECHANICAL, INCLUDING PHOTOCOPYING, RECORDING, OR BY ANY INFORMATION STORAGE AND RETRIEVAL SYSTEM, WITHOUT PERMISSION IN WRITING FROM DURRANT ARCHITECTS, INC.

Durrant Architects, Inc.



Architect
 DURRANT ARCHITECTS
 Structural Engineers
 DURRANT ENGINEERS
 Mechanical Engineers
 DURRANT ENGINEERS
 Electrical Engineers
 DURRANT ENGINEERS

Revisions

Project no. 9130
 Date 10/14/09
 Drawn by JBT
 Checked by JBT

Sheet Contents
 EXTERIOR ELEVATIONS
 SOUTH