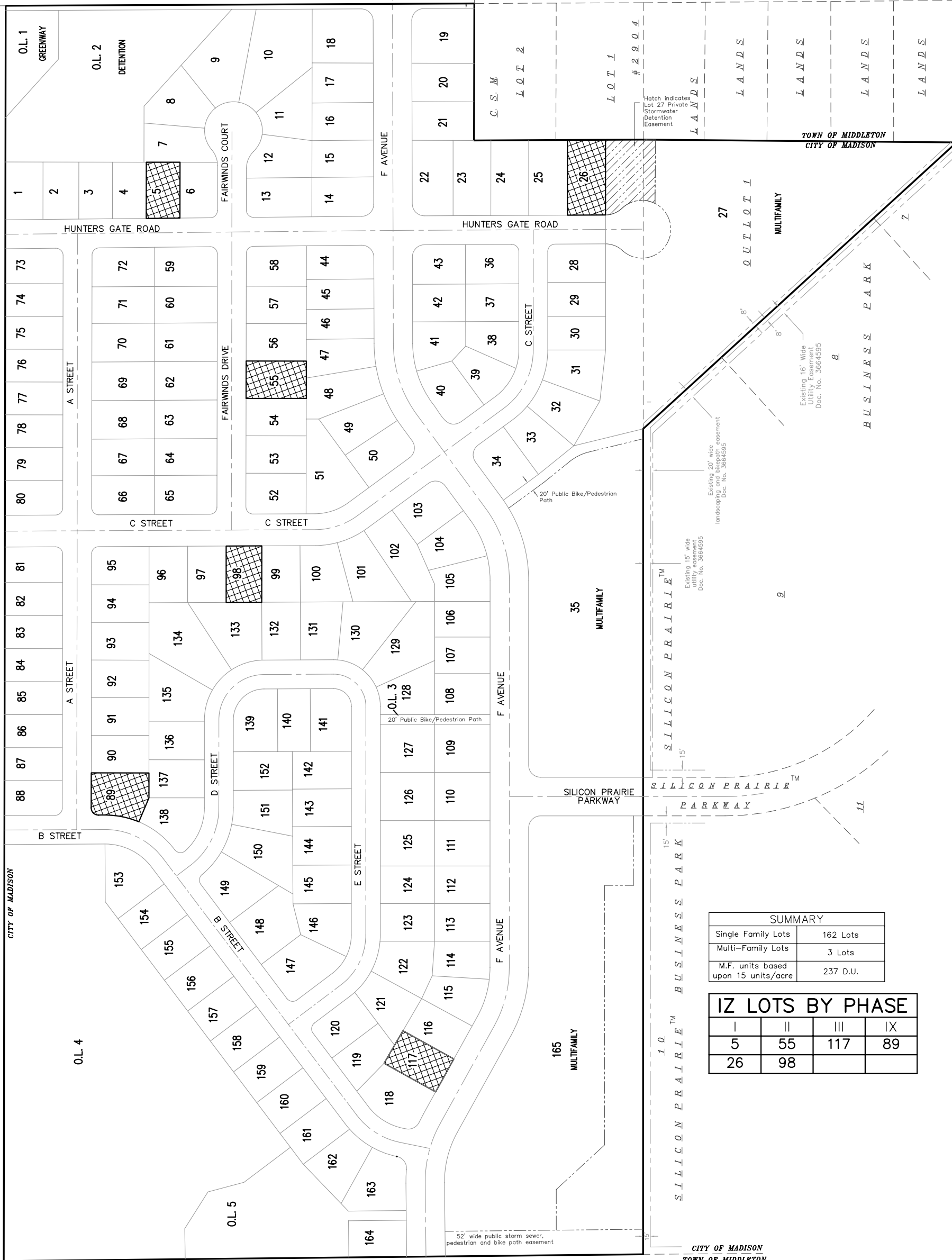


LANDS
MINERAL POINT ROAD
(C.T.H. "S")



SUMMARY	
Single Family Lots	162 Lots
Multi-Family Lots	3 Lots
M.F. units based upon 15 units/acre	237 D.U.

IZ LOTS BY PHASE			
I	II	III	IX
5	55	117	89
26	98		

C.S.M. #6411
LOT 1

OWNER/DEVELOPER:
Mineral Point Road Holdings, LLC
8500 Greenway Blvd., Suite 200
Middleton, WI 53562
(608) 836-0909



IZ LOTS

PRELIMINARY PLAT OF TORMEY RIDGE PLAT



SURVEYOR/ENGINEER:
Burse
surveying & engineering, Inc.
1400 E. Washington Ave., Suite 158
Madison, WI 53703 608.250.9263
Fax: 608.250.9266
email: burse@chorus.net
www.bursesurveyengr.com

REVISED: October 31, 2007
DATE: JUNE 19, 2007
PLOT NEW: PLOT
PROJECTS\BSE544\PREPLAT\ZMAP.DWG