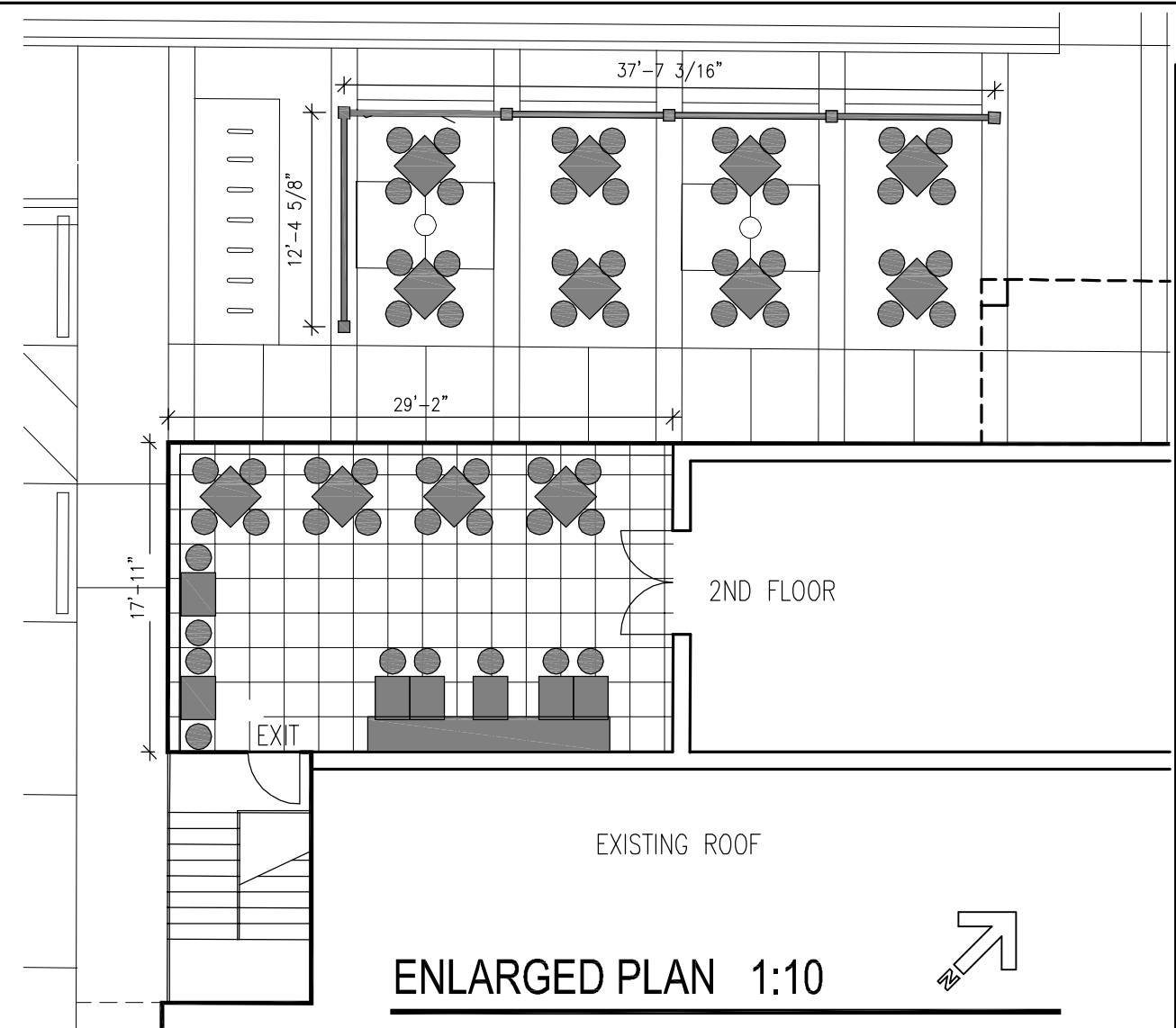
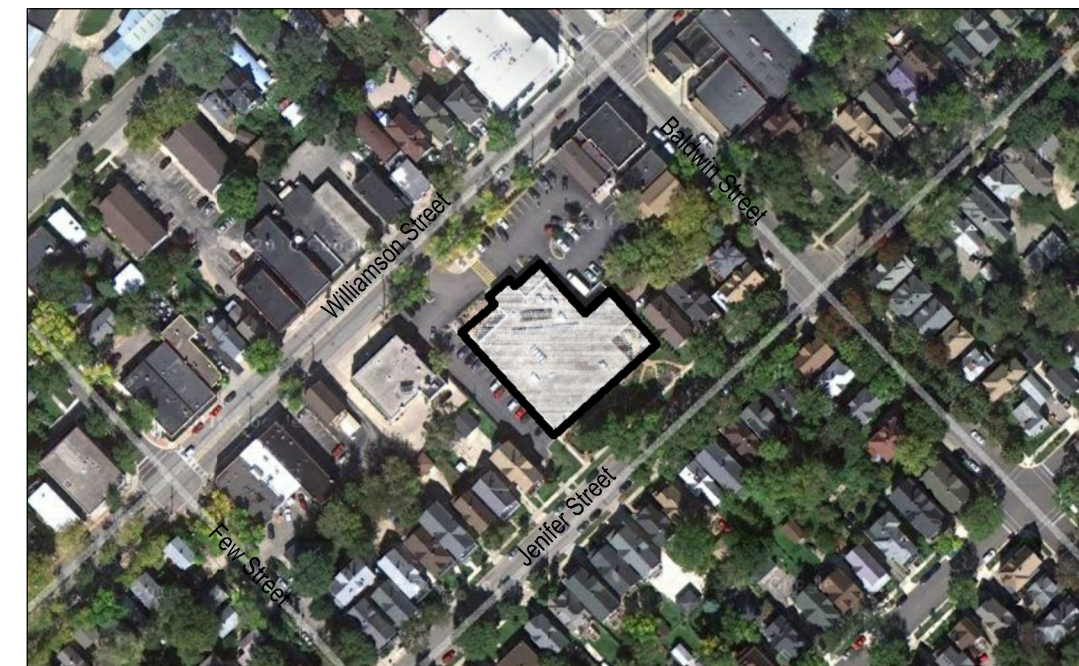


ARCHITECTURAL SITE PLAN 1:40



ENLARGED PLAN 1:10



AERIAL VIEW NTS



116 King Street
Madison, WI 53703
(608) 204-7464

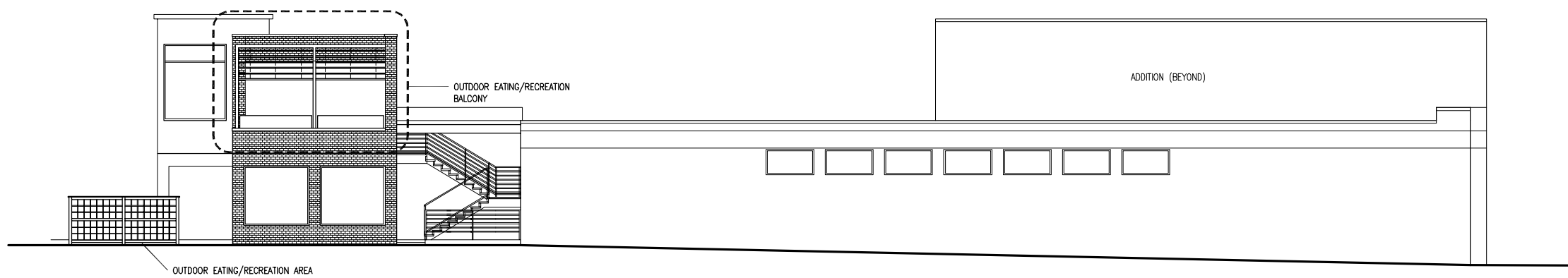
Willy Street Co-op

1221 Williamson St
Madison, WI

11/26/2012



Northwest elevation (Willy Street) 1/16" = 1'-0"



Southwest elevation 1/16" = 1'-0"

Willy Street Co-op

1221 Williamson St
Madison, WI

Building Elevations

11/26/2012

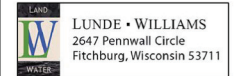
WILLY STREET CO-OP

Madison, Wisconsin



Owner:
Willy Street Co-op
1221 Williamson Street
Madison, WI 53703

PREPARED BY:



LUDE • WILLIAMS
2647 Penwell Circle
Fitchburg, Wisconsin 53711

LANDSCAPE WORKSHEET
Parking Lots, Storage Areas and Loading Areas
(Section 28.04 Madison General Ordinance)

Project Location/Address:	1221 WILLIAMSON STREET
Name of Project:	WILLY STREET CO-OP
Owner/Contact:	WILLY STREET CO-OP
Address:	1221 WILLIAMSON STREET

FOR PARKING LOTS WITH GREATER THAN 20 STALLS, LANDSCAPE PLANS MUST BE STAMPED BY A REGISTERED LANDSCAPE ARCHITECT

I. Number of Trees Required

The number of trees required for a parking lot is based on the number of parking stalls. Using the Schedule for Required Trees on the reverse side of this worksheet, determine the number of trees required. (Example: One tree is required for 10 parking stalls).

Landscape requirements for storage areas are determined by dividing the total square footage of the storage area by (300) square feet. This converts area to stalls. (Example: 10,000 square feet is equivalent to (33) stalls or (3) trees and (160) points).

Number of Parking Stalls	55
Total Square Footage of the Storage Area Divided by Three Hundred (300) Square Feet	N/A
Number of Canopy Shade Trees Required (2" - 2 1/2" Caliper) (See Schedule on reverse side)	TOTAL 4

II. Number of Landscape Points Required

The number of points required is also based on the number of parking stalls. Using the Point Schedule for Landscape Elements on the reverse side of this worksheet, determine the number of points required. (Example: 49.5 points are required for 10 stalls. A point fraction of (.5) or less may be disregarded, while a fraction in excess of (.5) must be counted as one point. Thus: 49.5 points would be rounded down to 49.0 points required).

The number of points required for loading areas is (75) points for each loading berth. (See Schedule on reverse side)

Number of Points Required (See Schedule on reverse side)	TOTAL 346
--	-----------

Tabulation of Points and Credits

Indicate below the quantity and points for all pertinent landscape elements. Also, credit information for boundary screening and any existing elements to be retained.

ELEMENT	POINT VALUE	QUANTITY	POINTS		CREDITS
			ACHIEVED	QUANTITY	
Canopy Tree: 2" - 2 1/2"	35	3	105	6	210
Deciduous Shrub	2	15	30	30	60
Evergreen Shrub	3				
Decorative Wall or Fence (per 10 L.F.)	5	8	40		
Earth Berm (per 10 L.F.)					
Avg. Height 30"	5				
Avg. Height 15"	2				
Evergreen Trees 3" height minimum	15				
Canopy Tree or Small Tree 1 1/2" - 2" Caliper (i.e., Crab, Hawthorn)	15				
Sub Totals			175	+	270
					TOTAL = 445

Total No. of Points Provided (Equal to or greater than points required)

*Trees required in Part I above, are not to be included in the point count.

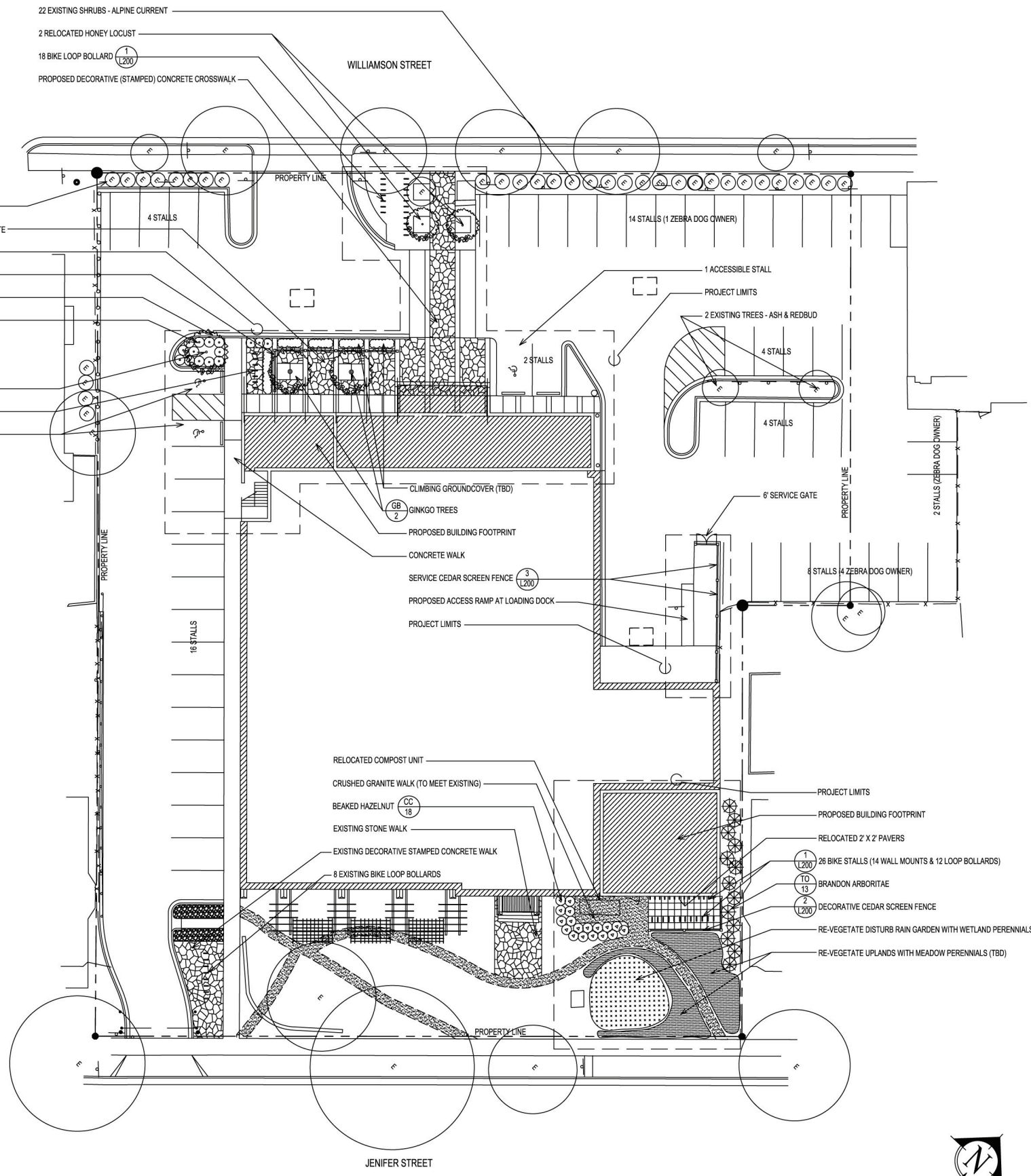


Approved by: *[Signature]* Date: 12-18-12

Canopy Trees						
Key	Quantity	Scientific Name	Common Name	Size	Root	Spacing
BN	1	Betula nigra 'BNMTF'	Dura Heat River Birch	.2 1/2"	Cal.	See Plan
GB	2	Ginkgo biloba 'Autumn Gold'	Autumn Gold Ginkgo	.2 1/2"	Cal.	See Plan

Conifer						
Key	Quantity	Scientific Name	Common Name	Size	Root	Spacing
TO	13	Thuja occidentalis 'Brandon'	Brandon's Arborvitae	5'	Height	See Plan

Shrubs						
Key	Quantity	Scientific Name	Common Name	Size	Root	Spacing
CC	18	Corylus cornuta	Beaked Hazelnut	#3	Cont.	See Plan
RA	15	Rhus aromatica 'Gro-low'	Gro-low Sumac	12-18"	Height	See Plan



ISSUED FOR:
SITE PLAN SUBMITTAL 12/21/12

DRAWING TITLE:
LANDSCAPE PLAN

SCALE: 0 10' 20' 30' 40'

PROJECT NUMBER: 1209.00
DRAWING NUMBER: L100