

CITY OF
MADISON

PARKS DIVISION

GOODMAN PARK MAINTENANCE FACILITY

1402 WINGRA GREEK PARKWAY

PLAN COMMISSION

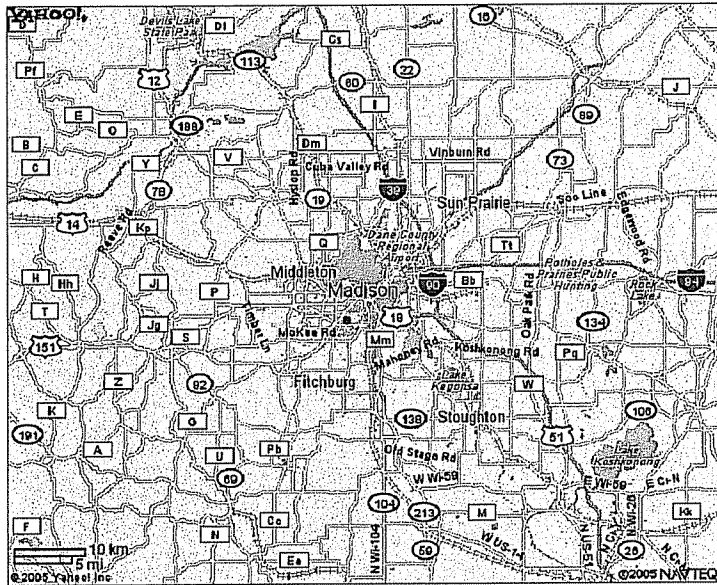
DECEMBER 7, 2005

PRESENTED BY:

BrayAssociates
ARCHITECTS, INC.

1468 NORTH HIGH POINT ROAD • MIDDLETON, WI 53562

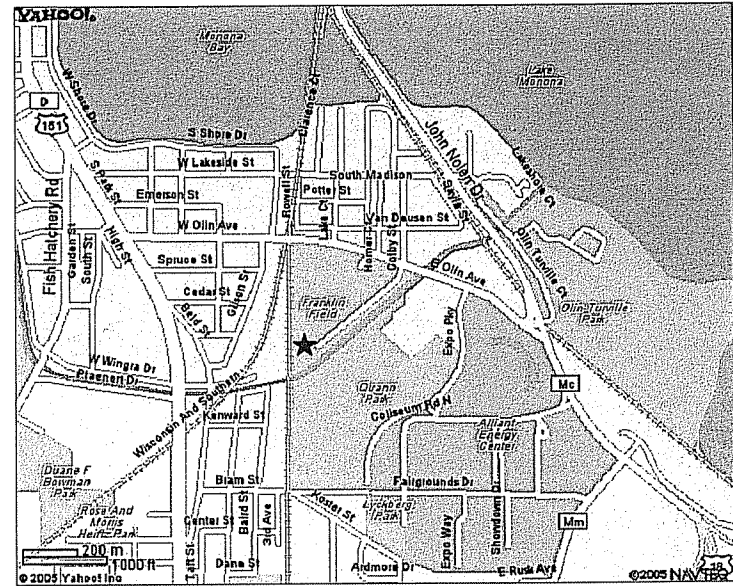
GOODMAN PARK MAINTENANCE FACILITY
1402 WINGRA CREEK PARKWAY
MADISON, WISCONSIN 53715



CITY LOCATION MAP

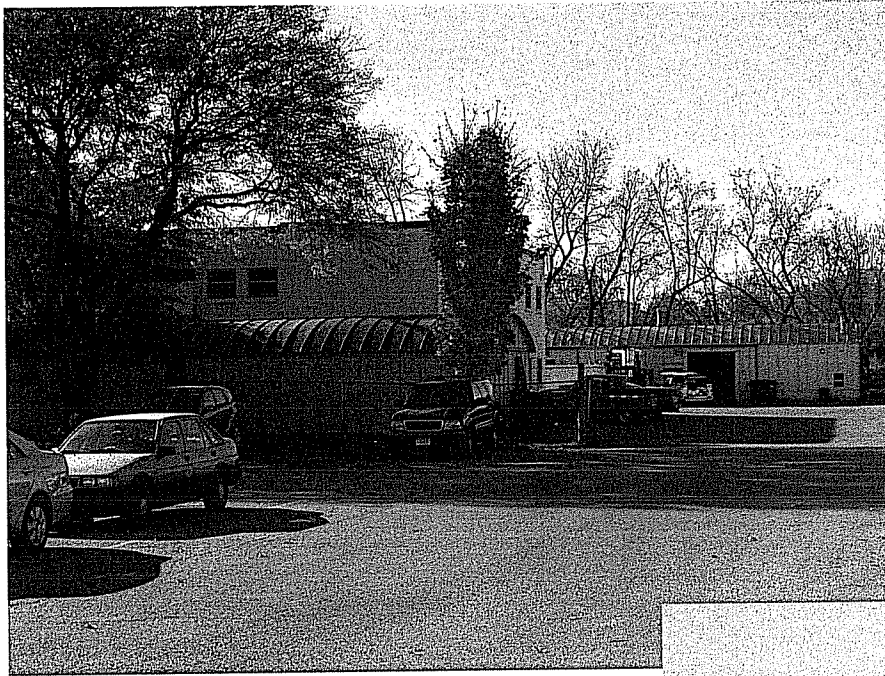
MADISON, WISCONSIN

BrayAssociates
ARCHITECTS, INC.

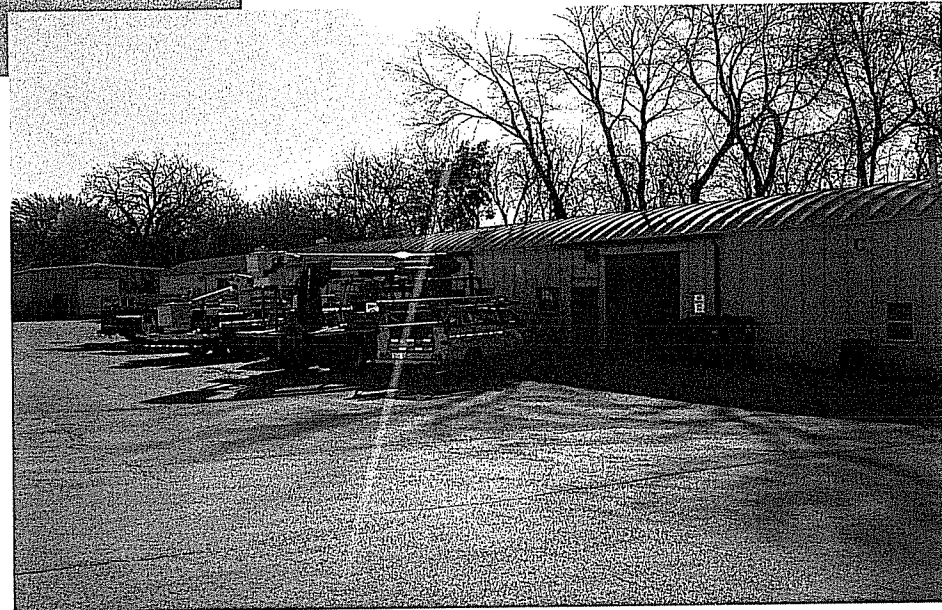


PROJECT LOCATION MAP

DECEMBER 7, 2005
1402 WINGRA CREEK PARKWAY -- LOCATION MAPS
GOODMAN PARK MAINTENANCE FACILITY



**METAL BUILDINGS
C & F
TO BE
DEMOLISHED**



BrayAssociates
ARCHITECTS, INC.

City of Madison Parks Division

Goodman Park Maintenance Facility

1402 Wingra Creek Parkway
Madison, Wisconsin

Bray Associates ARCHITECTS, INC.

1468 N. High Point Road
Middleton, WI 53562

Phone: (608) 831-5775
Fax: (608) 831-2619
Internet: www.brayarch.com

Plan Commission
Submittal

Date:
December 7, 2005

PROJECT NO.
2733

Consultants

Civil

Rettler Corporation

8500 Greenway Blvd. Suite 100
Middleton, WI 53562
Phone: (608) 833-5400
FAX: (608) 833-5401

Structural

Ambrose Engineering

W67 N222 Evergreen Blvd., Suite 106
Cedarburg, WI 53012
Phone: (262) 377-7802
FAX: (262) 377-4868

Plumbing & Fire Protection

HEIN Engineering Group

319 W. BELTLINE HWY, SUITE 111
MADISON, WI 53713
Phone: (608) 288-9260
Fax: (608) 288-9282
E-MAIL: hein@tis.com

HVAC

HEIN Engineering Group

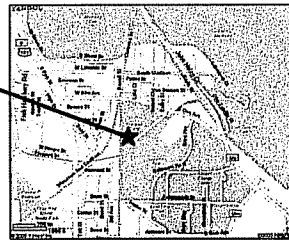
319 W. BELTLINE HWY, SUITE 111
MADISON, WI 53713
Phone: (608) 288-9260
Fax: (608) 288-9282
E-MAIL: hein@tis.com

Electrical

HEIN Engineering Group

319 W. BELTLINE HWY, SUITE 111
MADISON, WI 53713
Phone: (608) 288-9260
Fax: (608) 288-9282
E-MAIL: hein@tis.com

Goodman Park Maintenance Facility
1402 Wingra Creek Parkway
Madison, Wisconsin



PROJECT LOCATION MAP

Sheet index

CIVIL

S-1 OVERALL SITE PLAN
L-1 DEMOLITION PLAN
L-2 EROSION CONTROL PLAN
L-3 LAYOUT PLAN
L-4 GRADING & DRAINAGE
L-5 PLANTING PLAN

SU-1 SITE UTILITIES
SL-1 SITE LIGHTING

ARCHITECTURAL

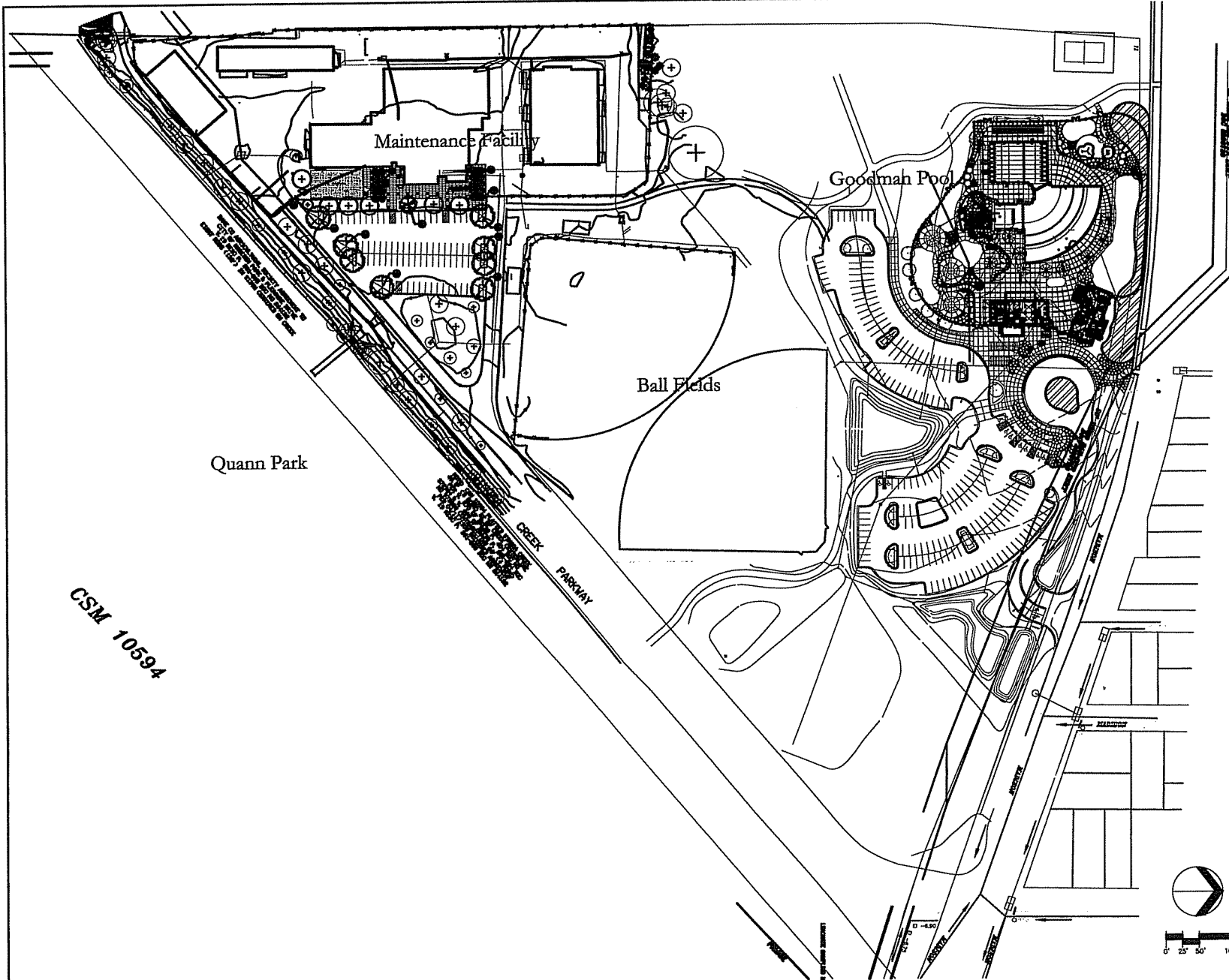
A1.1 FIRST FLOOR PLAN
A1.2 SECOND FLOOR PLAN
A2.1 EXTERIOR ELEVATIONS
A2.2 EXTERIOR ELEVATIONS

Material Symbols

	Earth
	Concrete
	Concrete Block
	Face Brick
	Structural Steel
	Batt Insulation
	Rigid Insulation
	Rough Lumber
	Finish Wood
	Plywood
	Ceramic Tile
	Gyp. Board
	Plaster or Stucco

Graphic Symbols

	Room Name Room Number
	Section Number Sheet Number
	Elevation Number Sheet Number
	Detail Number Sheet Number
	Door Number
	Window Type Demolition Key Note
	Wall Type
	Vertical Working Point Elevation
	Markerboard (M) Chalkboard (C) Yackboard (Y) Visual Display (V)



CSM 1059A

Bray Associates
ARCHITECTS, INC.
1638 Horton Hill Point Road
Fond du Lac, WI 53522
Phone (608) 833-8778
Fax (608) 833-2009

1630 Gateway Drive, Suite 101
Fond du Lac, WI 53522
Phone (608) 833-6600
Fax (608) 833-2401

GOODMAN PARK MAINTENANCE FACILITY
ADDITION & REMODELING
1402 WINGRA PARKWAY, MADISON, WI 53715
CITY OF MADISON - PARKS DEPT.

OVERALL SITE PLAN

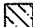

Project No.	1059A
Client	City of Madison - Parks Dept.
Scale	1" = 50'
Date	12/07/05
Sheet No.	S-1

S-1

GENERAL NOTES

1. CONTACT OWNER'S DESIGN & WORKING DATA PRIOR TO START OF CONSTRUCTION.
2. CONTACT THE OWNER TO ADJUST PUBLIC UTILITY LOCATIONS TO MATCHING DATA PRIOR TO THE START OF DEMOLITION.
3. DEMOLITION AND PILING FOR THE DEMOLITION, ABANDONMENT, AND/OR RELOCATION OF ALL UTILITIES WITHIN THE PROJECT LIMITS AS NOTED ON THIS DOCUMENT.
4. PLACE A 4" BENCH MARK AS NOTED ON THIS DOCUMENT FOR SITE SECURITY PRIOR TO THE START OF CONSTRUCTION / DEMOLITION IN ACCORDANCE WITH THE PROJECT MANUAL SPECIFICATIONS. VERIFY EXISTING FINISH AS NOTED AS REQUIRED.
5. STOP TOPSOIL WITHIN THE PROJECT LIMITS IN ACCORDANCE WITH THE PROJECT MANUAL SPECIFICATIONS.
6. REMOVE ONLY THE EXISTING FORTH AND RETENTION WITHIN THE PROJECT LIMITS WITHIN THE PROJECT MANUAL SPECIFICATIONS.
7. REMOVE ALL EXISTING WITHIN THE PROJECT LIMITS WITHIN THE PROJECT MANUAL SPECIFICATIONS. VERIFY ALL EXISTING UTILITIES WITHIN THE PROJECT LIMITS TO BE REMOVED.
8. ALL CONSTRUCTION PLANNING ON EXISTING UTILITIES SHALL BE DONE PRIOR TO THE START OF CONSTRUCTION. ALL EXISTING UTILITIES SHALL BE REMOVED PRIOR TO THE START OF CONSTRUCTION. ALL EXISTING UTILITIES SHALL BE REMOVED FROM THE SITE AND DEPOSITED AT A LEGAL LANDFILL. ALL EXISTING UTILITIES SHALL BE REMOVED FROM THE SITE AND DEPOSITED AT A LEGAL LANDFILL. ALL EXISTING UTILITIES SHALL BE REMOVED FROM THE SITE AND DEPOSITED AT A LEGAL LANDFILL.
9. ALL EXISTING UTILITIES SHALL BE REMOVED FROM THE SITE AND DEPOSITED AT A LEGAL LANDFILL. ALL EXISTING UTILITIES SHALL BE REMOVED FROM THE SITE AND DEPOSITED AT A LEGAL LANDFILL. ALL EXISTING UTILITIES SHALL BE REMOVED FROM THE SITE AND DEPOSITED AT A LEGAL LANDFILL.
10. ALL EXISTING UTILITIES SHALL BE REMOVED FROM THE SITE AND DEPOSITED AT A LEGAL LANDFILL. ALL EXISTING UTILITIES SHALL BE REMOVED FROM THE SITE AND DEPOSITED AT A LEGAL LANDFILL. ALL EXISTING UTILITIES SHALL BE REMOVED FROM THE SITE AND DEPOSITED AT A LEGAL LANDFILL.
11. ALL EXISTING UTILITIES SHALL BE REMOVED FROM THE SITE AND DEPOSITED AT A LEGAL LANDFILL. ALL EXISTING UTILITIES SHALL BE REMOVED FROM THE SITE AND DEPOSITED AT A LEGAL LANDFILL. ALL EXISTING UTILITIES SHALL BE REMOVED FROM THE SITE AND DEPOSITED AT A LEGAL LANDFILL.
12. ALL EXISTING UTILITIES SHALL BE REMOVED FROM THE SITE AND DEPOSITED AT A LEGAL LANDFILL. ALL EXISTING UTILITIES SHALL BE REMOVED FROM THE SITE AND DEPOSITED AT A LEGAL LANDFILL. ALL EXISTING UTILITIES SHALL BE REMOVED FROM THE SITE AND DEPOSITED AT A LEGAL LANDFILL.
13. UPON COMPLETION OF WORK WITHIN THE CITY OF MADISON'S BOUNDARY, RETURN ALL DISTURBED AREAS TO THE ORIGINAL CONDITIONS AND IN ACCORDANCE WITH THE TOWN'S SPECIFICATIONS.

DEMOLITION HATCH PATTERNS

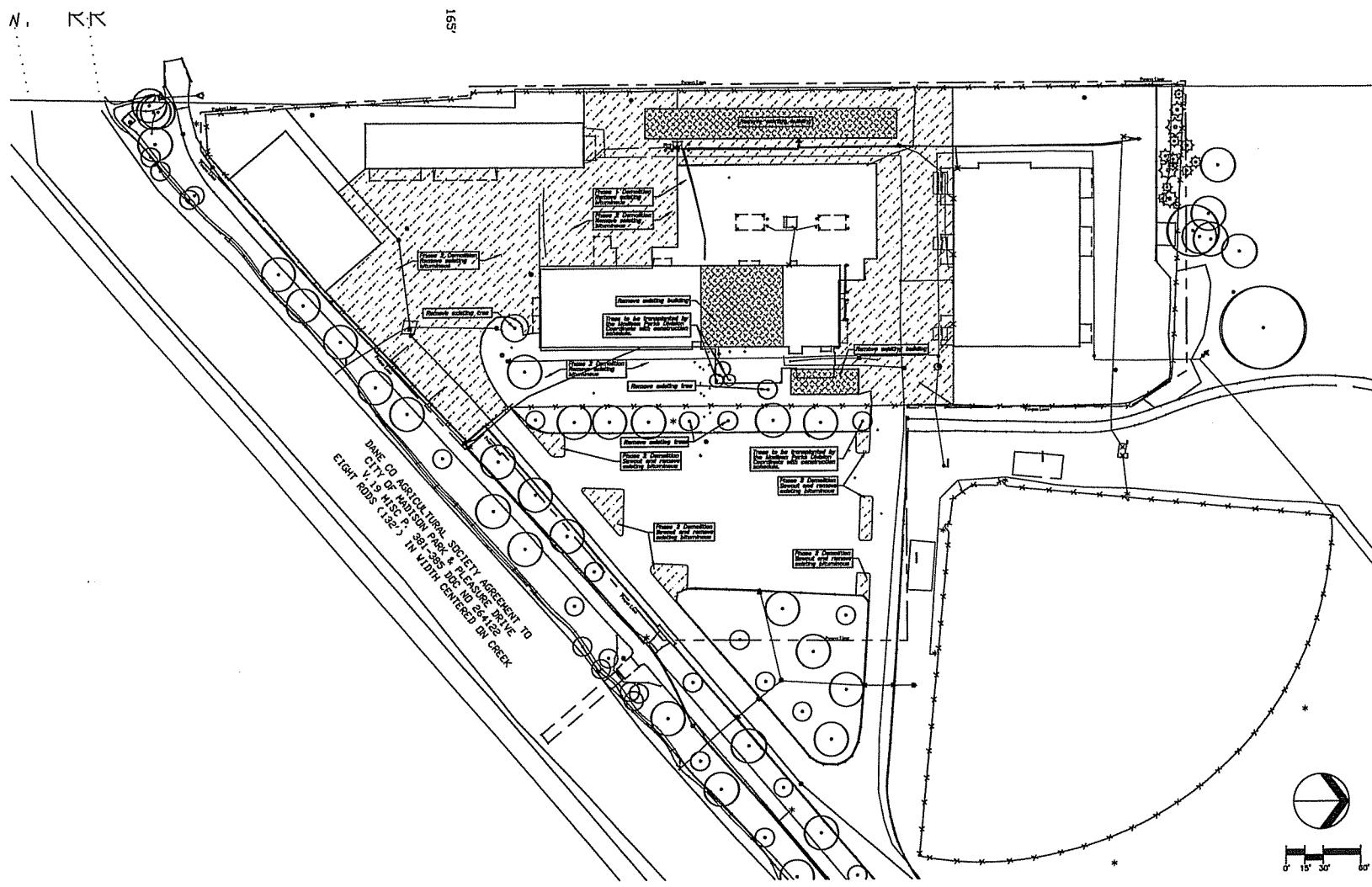
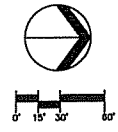
-  PHASE 2 DEMOLITION: BRICK, AND DISPOSAL OF REMAINING PRODUCT
-  BUILDING DEMOLITION

BrayAssociates
ARCHITECTS, INC.
1402 North West Front Road
Fond du Lac, WI 53424
Phone (920) 833-8778
Fax (920) 833-8049

RHR
RHR CORPORATION
8100 Gateway Blvd., Suite 104
Fond du Lac, WI 53424
Phone (920) 833-8420
Fax (920) 833-8428

GOODMAN PARK MAINTENANCE FACILITY
ADDITION & REMODELING
1402 WINGRA PARKWAY, MADISON, WI 53715
CITY OF MADISON - PARKS DEPT.

Sheet Title	
DEMOLITION PLAN	
Author	Dr. Date Description
Project Number	Drawn By
2733	FJH
Date Issued	Reviewed By
12.07.05	RLS
Sheet Number	L-1



DANE CO AGRICULTURAL SOCIETY AGREEMENT TO
CITY OF MADISON PARKS DEPT. PLEASE DRP THE
EIGHT (8) ROWS C 132' IN WIDTH CENTERED ON DREX

N. RR

165'

CONSTRUCTION SEQUENCE

1. INSTALL PERIMETER SILT FENCE. ALL EROSION CONTROL MEASURES TO REMAIN UNTIL CONSTRUCTION IS COMPLETE AND SITE HAS BEEN STABILIZED.
2. CONSIDER THE EROSION POND TO BEHAVE AS STORMWATER FROM DURING CONSTRUCTION.
3. SAFETY STAGING SHALL BE MAINTAINED THROUGHOUT CONSTRUCTION PHASES.
4. PEOPLE SHALL NEVER WALK THROUGH TYPICAL SLOPES.
5. SEED/PLANT FINISHED AREAS. ALL AREAS MUST HAVE E-WAY WITHIN 7 DAYS OF COMPLETION.
6. REMOVE SEDIMENT FROM SEDIMENTATION BASIN UPON COMPLETION OF PERMANENT VEGETATION. REDUCE BASIN TO ORIGINAL DESIGN VOLUME.
7. ALL SEDIMENT SHALL BE COLLECTED IN A LOGICAL SEQUENCE AS TO MINIMIZE THE AMOUNT OF MUD SOIL EXPOSED AT ANY ONE TIME. MINIMUM COVERING MATERIAL AS LOW AS POSSIBLE.
8. ALL SEDIMENT LAYER MUST BE REMOVED FROM THE SITE AS SOON AS POSSIBLE. A DISPERSED SEDIMENT BARRIERS SHALL BE PLACED AT OTHER APPROVED AREAS. THESE BARRIERS WILL BE CONSIDERED AS A BARRIER THAT MUST BE MAINTAINED THROUGHOUT CONSTRUCTION PHASES. BARRIERS SHALL BE MAINTAINED THROUGHOUT CONSTRUCTION PHASES TO PREVENT MUD FROM BEING TRANSPORTED TO ADJACENT AREAS. BARRIERS SHALL BE MAINTAINED THROUGHOUT CONSTRUCTION PHASES TO PREVENT MUD FROM BEING TRANSPORTED TO ADJACENT AREAS. BARRIERS SHALL BE MAINTAINED THROUGHOUT CONSTRUCTION PHASES TO PREVENT MUD FROM BEING TRANSPORTED TO ADJACENT AREAS.
9. IN THE CASE OF LATE SEASON AND WINTER CONSTRUCTION RESTORATION PLANNING OF THE SITE SHALL OCCUR NO LATER THAN EARLY FEBRUARY OF THE NEXT CONSTRUCTION SEASON. EROSION CONTROL MEASURES SHALL BE MAINTAINED UNTIL THE END OF THE NEXT CONSTRUCTION SEASON. EROSION CONTROL MEASURES SHALL BE MAINTAINED UNTIL THE END OF THE NEXT CONSTRUCTION SEASON. EROSION CONTROL MEASURES SHALL BE MAINTAINED UNTIL THE END OF THE NEXT CONSTRUCTION SEASON.
10. IN THE CASE OF LATE SEASON AND WINTER CONSTRUCTION RESTORATION PLANNING OF THE SITE SHALL OCCUR NO LATER THAN EARLY FEBRUARY OF THE NEXT CONSTRUCTION SEASON. EROSION CONTROL MEASURES SHALL BE MAINTAINED UNTIL THE END OF THE NEXT CONSTRUCTION SEASON. EROSION CONTROL MEASURES SHALL BE MAINTAINED UNTIL THE END OF THE NEXT CONSTRUCTION SEASON.
11. EROSION CONTROL MEASURES DESTROYED AS A RESULT OF CONSTRUCTION ACTIVITIES SHALL BE REPAIRED BY THE END OF THE WORK DAY.
12. TEMPORARY EROSION CONTROL MEASURES SHALL BE REMOVED AT THE COMPLETION OF CONSTRUCTION. PERMANENT EROSION CONTROL MEASURES SHALL BE INSTALLED AS SOON AS POSSIBLE.
13. MULTIPLE FLOOR FRAMING USED AS A SEDIMENT BARRIER FOR STORM SEWERS AND OTHER WORK SHALL BE SET TO REMAIN FOR AT LEAST 60 DAYS AFTER THE END OF THE WORK. AS MANUFACTURED BY THE MANUFACTURER. THE SEDIMENT BARRIER SHALL BE MAINTAINED THROUGHOUT CONSTRUCTION PHASES TO PREVENT MUD FROM BEING TRANSPORTED TO ADJACENT AREAS. BARRIERS SHALL BE MAINTAINED THROUGHOUT CONSTRUCTION PHASES TO PREVENT MUD FROM BEING TRANSPORTED TO ADJACENT AREAS.

EROSION CONTROL LEGEND

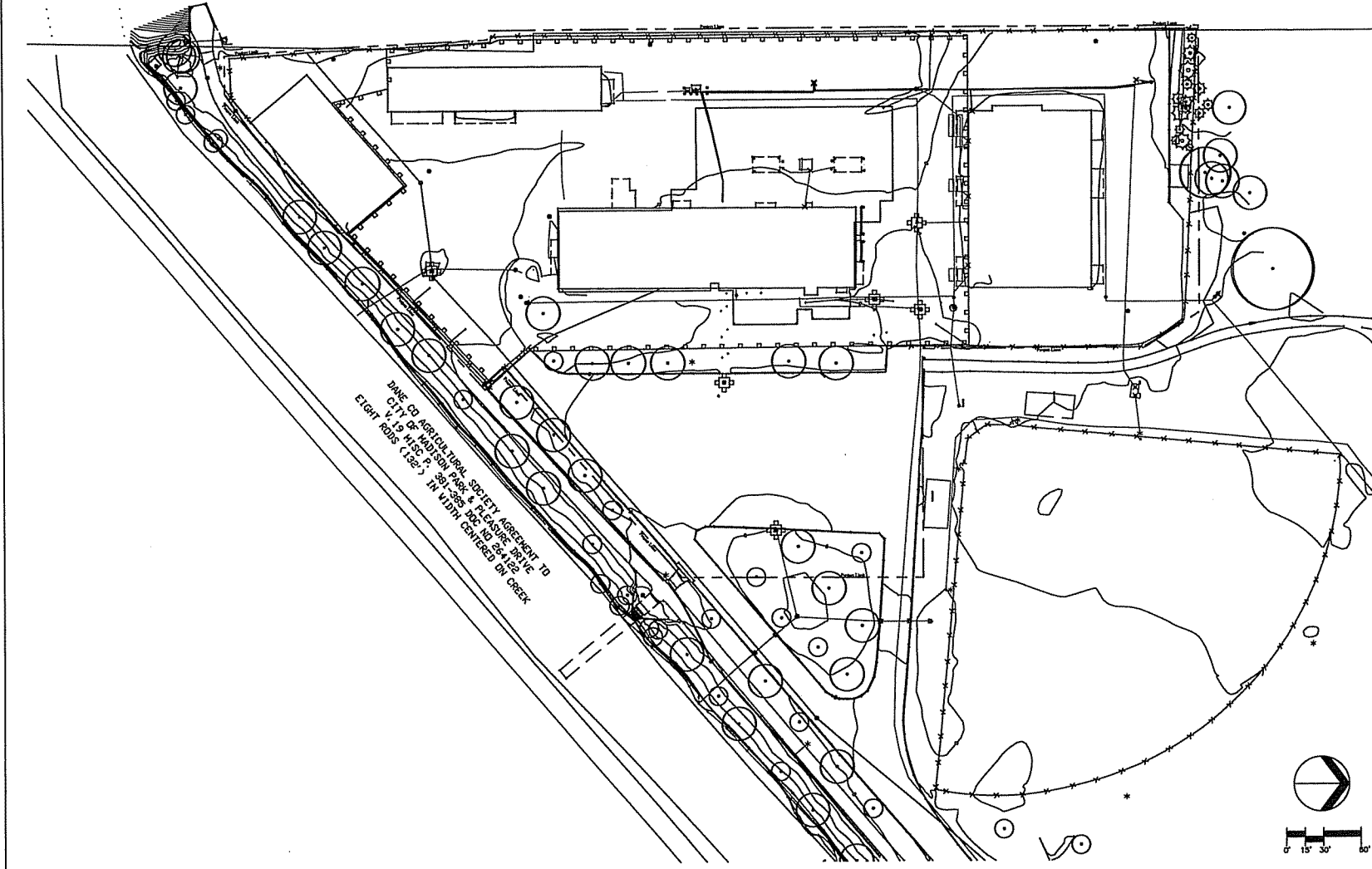
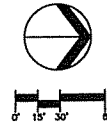
SILT FENCING [Symbol] SILT PROTECTION [Symbol]

Bray Associates ARCHITECTS, INC.
 1408 North 18th Street
 FISHKILL, NY 12524
 PHONE (518) 833-2378
 FAX (518) 833-2499

BRAY ASSOCIATES ARCHITECTS, INC.
 8500 GREENWAY BLVD, SUITE 101
 FISHKILL, NY 12524
 PHONE (518) 833-2400
 FAX (518) 833-2410

GOODMAN PARK MAINTENANCE FACILITY
 ADDITION & REMODELING
 1402 WINGRA PARKWAY, MADISON, WI 53715
 CITY OF MADISON - PARKS DEPT.

Revision		
NO.	DATE	DESCRIPTION
Project Number:	2733	Drawn By: RHM
Date Issued:	12.07.05	Reviewed By: RLS
Sheet Number:	L-2	



HATCH PATTERNS



GENERAL NOTES

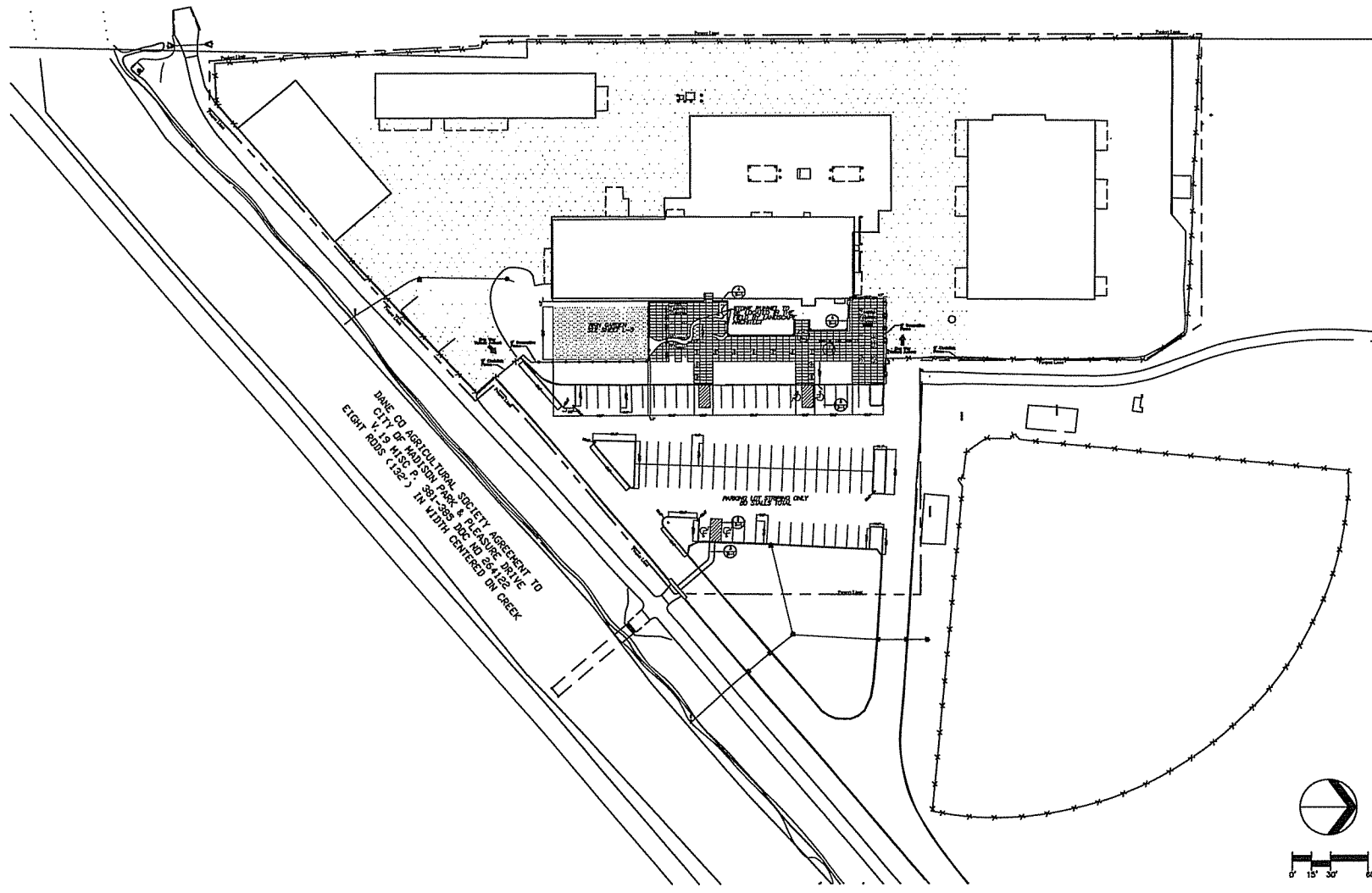
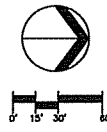
1. CONTACT SPOUSE BEFORE A WORKING DATE PRIOR TO THE START OF CONSTRUCTION.
2. ALL PROPOSED DIMENSIONS ARE REFERENCED PARALLEL OR PERPENDICULAR TO THE PROPOSED FEATURED ITEM.
3. SEE SHEET 101 FOR EXISTING TREE LOCUS.
4. PLACE A 'C' SIGN FORCE AS SHOWN ON THIS DOCUMENT FOR SITE SECURITY PRIOR TO THE START OF CONSTRUCTION. PROTECT IN ACCORDANCE WITH THE PROJECT MANUAL SPECIFICATIONS.
5. VERIFY EXISTING UTILITIES AND DEPTH BEFORE ANY CONSTRUCTION OF THE FIELD BY THE PROJECT MANAGER.
6. VERIFY UTILITIES AND DEPTH BEFORE ALL OTHER LANDSCAPE WORK EXCEPT PLANTING CONSTRUCTION IN ACCORDANCE WITH THE PROJECT MANUAL SPECIFICATIONS EXCEPT THESE AREAS INDICATED BELOW.
7. ANY EXISTING UTILITIES NOT SHOWN ON THESE DOCUMENTS WHICH NEED TO BE RELOCATED, RELOCATED, AND OR ABANDONED SHALL BE THE RESPONSIBILITY OF THE SITE CONSTRUCTION AND INCLUDED IN THE BIDDING DOCUMENTS SUBMITTER'S RISK SHALL VISIT THE SITE AND REASON THE EXISTING SITE CONDITIONS PRIOR TO THE BID DATE.
8. CONTRACTOR SHALL VERIFY ALL EXISTING UTILITY CHAINS AND OTHER CONCRETE WALLS, STRUCTURES, FOUNDATION WALLS, FOUNDATION BEAMS, AND FOUNDATION SLABS OR FOUNDATIONS AS PART OF THE BIDDING PROCESS. THE BIDDING CONTRACTOR SHALL BE RESPONSIBLE FOR EXISTING UTILITY CONDITIONS IN THESE AREAS.

**BrayAssociates
ARCHITECTS, INC.**
1448 North Point Parkway
Hoshton, WI 53548
Phone (608) 831-8775
Fax (608) 831-8448

**PHR
PLANNING CORPORATION**
8500 Greenway Blvd., Suite 101
Hoshton, WI 53548
Phone (608) 833-8400
Fax (608) 833-8408

**GOODMAN PARK MAINTENANCE FACILITY
ADDITION & REMODELING**
1402 WINGRA PARKWAY, MADISON, WI 53715
CITY OF MADISON - PARKS DEPT.

Sheet Title	
LAYOUT PLAN	
Author:	
Rev. No.	Revision
Project Number:	Drawn By:
2733	PAR
Date Issued:	Reviewed By:
12.07.05	RLS
Sheet Number:	
	L-3



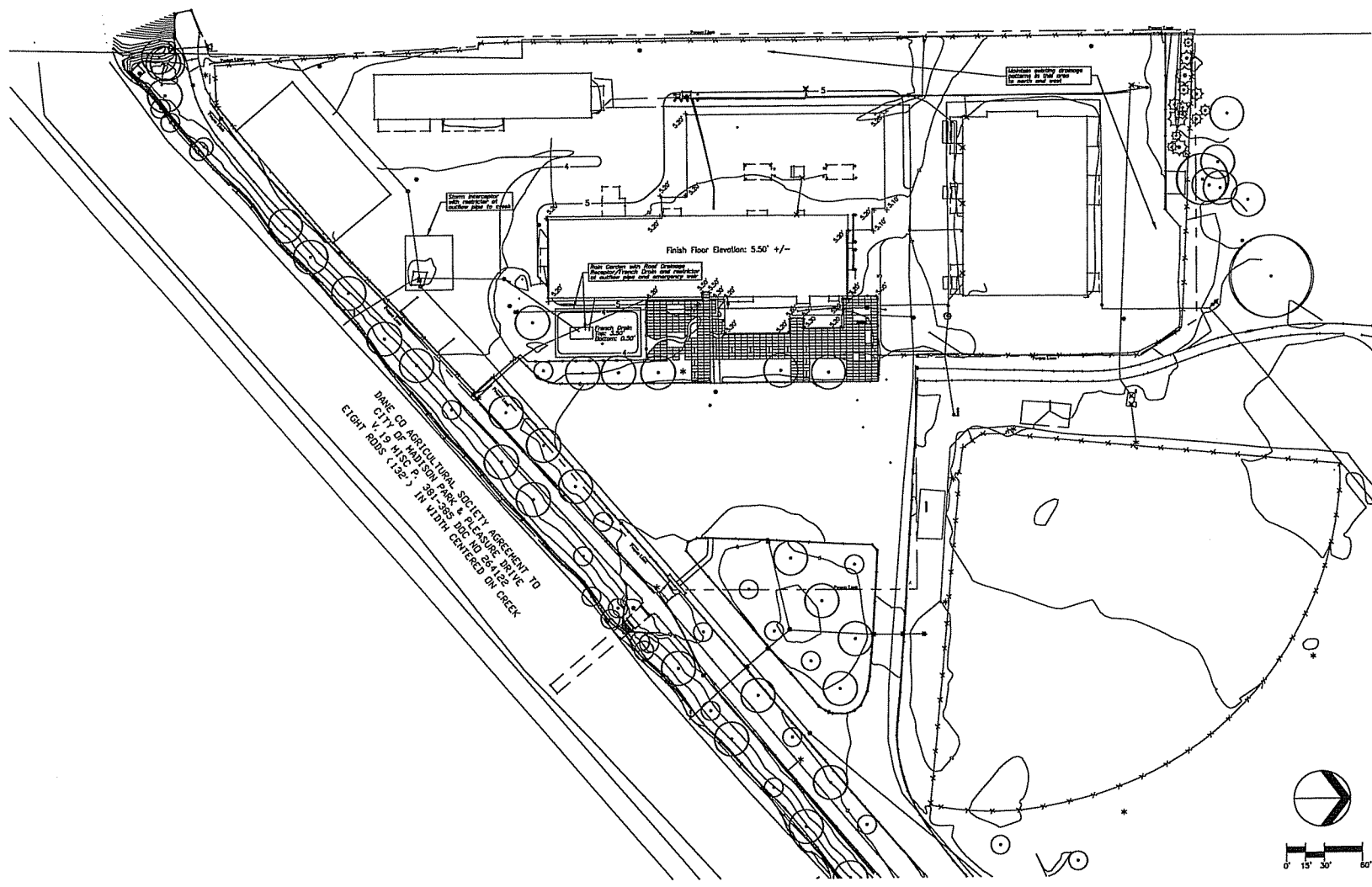
BrayAssociates
ARCHITECTS, INC.
1428 North 10th Street
Fond du Lac, WI 53526
Phone: (920) 833-6773
Fax: (920) 833-6209

RR
PARKS DEPARTMENT

6500 Greenway Blvd., Suite 101
Fond du Lac, WI 53526
Phone: (920) 833-6200
Fax: (920) 833-6428

GOODMAN PARK MAINTENANCE FACILITY
ADDITION & REMODELING
1402 WINGRA PARKWAY, MADISON, WI 53715
CITY OF MADISON - PARKS DEPT.

Sheet Title	
GRADING AND DRAINAGE PLAN	
Revisions	By
No.	Date
Project Number:	Drawn By:
2733	RLS
Date Issued:	Reviewed By:
12.07.05	RLS
Sheet Number:	L-4



GENERAL NOTES

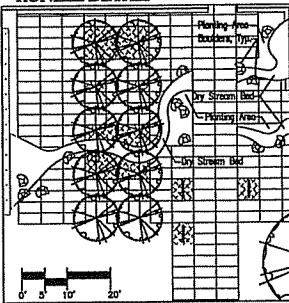
1. EXISTING EXTERIOR FINISHES & STRUCTURE SHALL BE OPEN TO THE LEVEL OF CONSTRUCTION.
2. CONSTRUCTION SHALL VERIFY THE LOCATION OF ALL EXISTING UTILITIES PRIOR TO THE START OF WORK.
3. ALL EXISTING UTILITIES SHALL BE PROTECTED AND DEEPENED AS NECESSARY TO PREVENT DAMAGE TO EXISTING UTILITIES.
4. ALL EXISTING UTILITIES SHALL BE PROTECTED AND DEEPENED AS NECESSARY TO PREVENT DAMAGE TO EXISTING UTILITIES.
5. ALL EXISTING UTILITIES SHALL BE PROTECTED AND DEEPENED AS NECESSARY TO PREVENT DAMAGE TO EXISTING UTILITIES.
6. ALL EXISTING UTILITIES SHALL BE PROTECTED AND DEEPENED AS NECESSARY TO PREVENT DAMAGE TO EXISTING UTILITIES.
7. ALL EXISTING UTILITIES SHALL BE PROTECTED AND DEEPENED AS NECESSARY TO PREVENT DAMAGE TO EXISTING UTILITIES.
8. ALL EXISTING UTILITIES SHALL BE PROTECTED AND DEEPENED AS NECESSARY TO PREVENT DAMAGE TO EXISTING UTILITIES.
9. ALL EXISTING UTILITIES SHALL BE PROTECTED AND DEEPENED AS NECESSARY TO PREVENT DAMAGE TO EXISTING UTILITIES.
10. ALL EXISTING UTILITIES SHALL BE PROTECTED AND DEEPENED AS NECESSARY TO PREVENT DAMAGE TO EXISTING UTILITIES.
11. ALL EXISTING UTILITIES SHALL BE PROTECTED AND DEEPENED AS NECESSARY TO PREVENT DAMAGE TO EXISTING UTILITIES.
12. ALL EXISTING UTILITIES SHALL BE PROTECTED AND DEEPENED AS NECESSARY TO PREVENT DAMAGE TO EXISTING UTILITIES.
13. ALL EXISTING UTILITIES SHALL BE PROTECTED AND DEEPENED AS NECESSARY TO PREVENT DAMAGE TO EXISTING UTILITIES.
14. ALL EXISTING UTILITIES SHALL BE PROTECTED AND DEEPENED AS NECESSARY TO PREVENT DAMAGE TO EXISTING UTILITIES.
15. ALL EXISTING UTILITIES SHALL BE PROTECTED AND DEEPENED AS NECESSARY TO PREVENT DAMAGE TO EXISTING UTILITIES.

Bray Associates ARCHITECTS, INC.
 1408 NORTH HARRIS ROAD
 FARMINGTON, WI 53120
 PHONE (531) 833-8400
 FAX (531) 833-2419

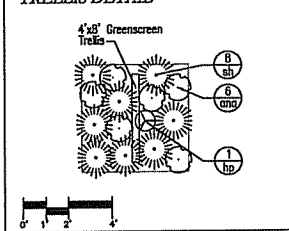
BB
 BRAY ASSOCIATES ARCHITECTS, INC.

8300 GREENWAY BLVD., SUITE 100
 FARMINGTON, WI 53120
 PHONE (531) 833-8400
 FAX (531) 833-2419

RUNELL DETAIL

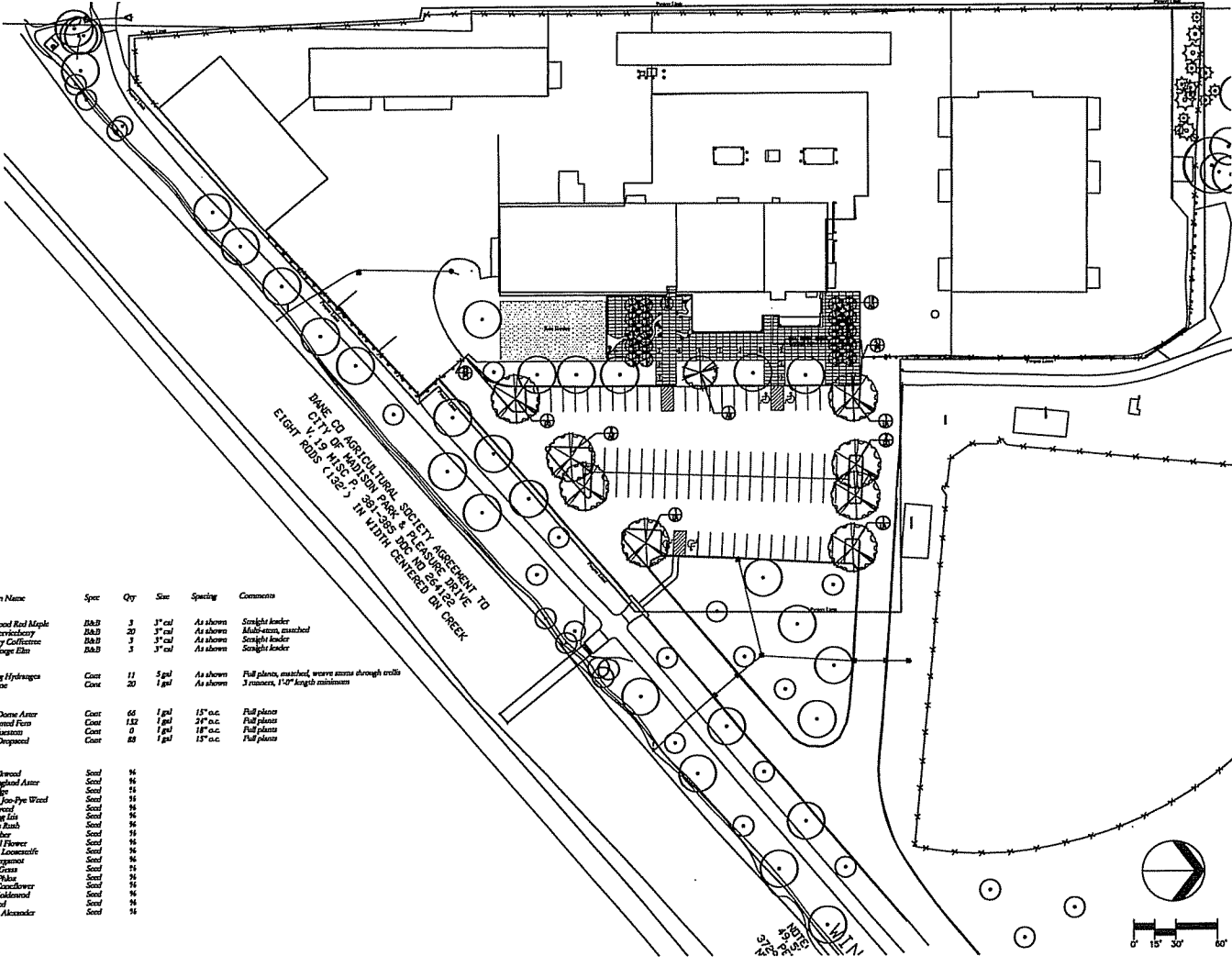


TRELLIS DETAIL



PLANT SCHEDULE

Key	Botanical Name	Common Name	Spec	Qty	Size	Spacing	Comments
NR	<i>Aster rubrum</i> 'Woodstock'	Northwood Red Maple	DBP	3	3" cal	As shown	Straight leader
AG	<i>Androsace grandiflora</i>	Apple-Sortersberry	DBP	20	3" cal	As shown	Multi-stem, mounded
GD	<i>Gymnocladia dioica</i>	Kanawha Coffeeberry	DBP	3	3" cal	As shown	Straight leader
UA	<i>Ulmus americana</i> 'Valley Forge'	Valley Forge Elm	DBP	3	3" cal	As shown	Straight leader
Vines							
sp	<i>Hydrangea paniculata</i>	Climbing Hydrangea	Coat	11	5 gal	As shown	Full plants, mounded, weave stems through trellis
PH	<i>Parthenocissus vitacea</i>	Woollyvine	Coat	20	1 gal	As shown	3 runners, 1'-0" length minimum
Perennials/Grasses/Vines							
aa	<i>Aster novae-angliae</i> 'Purple Dome'	Purple Dome Aster	Coat	66	1 gal	15" o.c.	Full plants
sp	<i>Demissastris paniculata</i>	Hay-wheated Fern	Coat	122	1 gal	24" o.c.	Full plants
st	<i>Schizanthus nutans</i>	Lilac Blazzard	Coat	0	1 gal	18" o.c.	Full plants
st	<i>Sporobolus heterophyllus</i>	Prince Dropseed	Coat	88	1 gal	15" o.c.	Full plants
Rain Garden Seed Mixture							
al	<i>Achillea millefolium</i>	Red Adonis	Seed	16			
as	<i>Aster novae-angliae</i>	New England Aster	Seed	16			
cr	<i>Carex vulpinoidea</i>	Pine Sedge	Seed	16			
op	<i>Opuntia missouriensis</i>	Spotted Joe-Pye Weed	Seed	16			
sa	<i>Sambucus racemosa</i>	Sambucus	Seed	16			
tr	<i>Trifolium pratense</i>	Blue Fly Lin	Seed	16			
tr	<i>Trifolium repens</i>	Threatly Rush	Seed	16			
tr	<i>Trifolium pratense</i>	Corydalis	Seed	16			
tr	<i>Trifolium pratense</i>	Cardinal Flower	Seed	16			
tr	<i>Trifolium pratense</i>	Winged Loosestrife	Seed	16			
tr	<i>Trifolium pratense</i>	Wild Bergamot	Seed	16			
tr	<i>Trifolium pratense</i>	Swamp Milkweed	Seed	16			
tr	<i>Trifolium pratense</i>	Marsh Milkweed	Seed	16			
tr	<i>Trifolium pratense</i>	Swamp Milkweed	Seed	16			
tr	<i>Trifolium pratense</i>	Ohio Goldenrod	Seed	16			
tr	<i>Trifolium pratense</i>	Ironweed	Seed	16			
tr	<i>Trifolium pratense</i>	Golden Alexander	Seed	16			

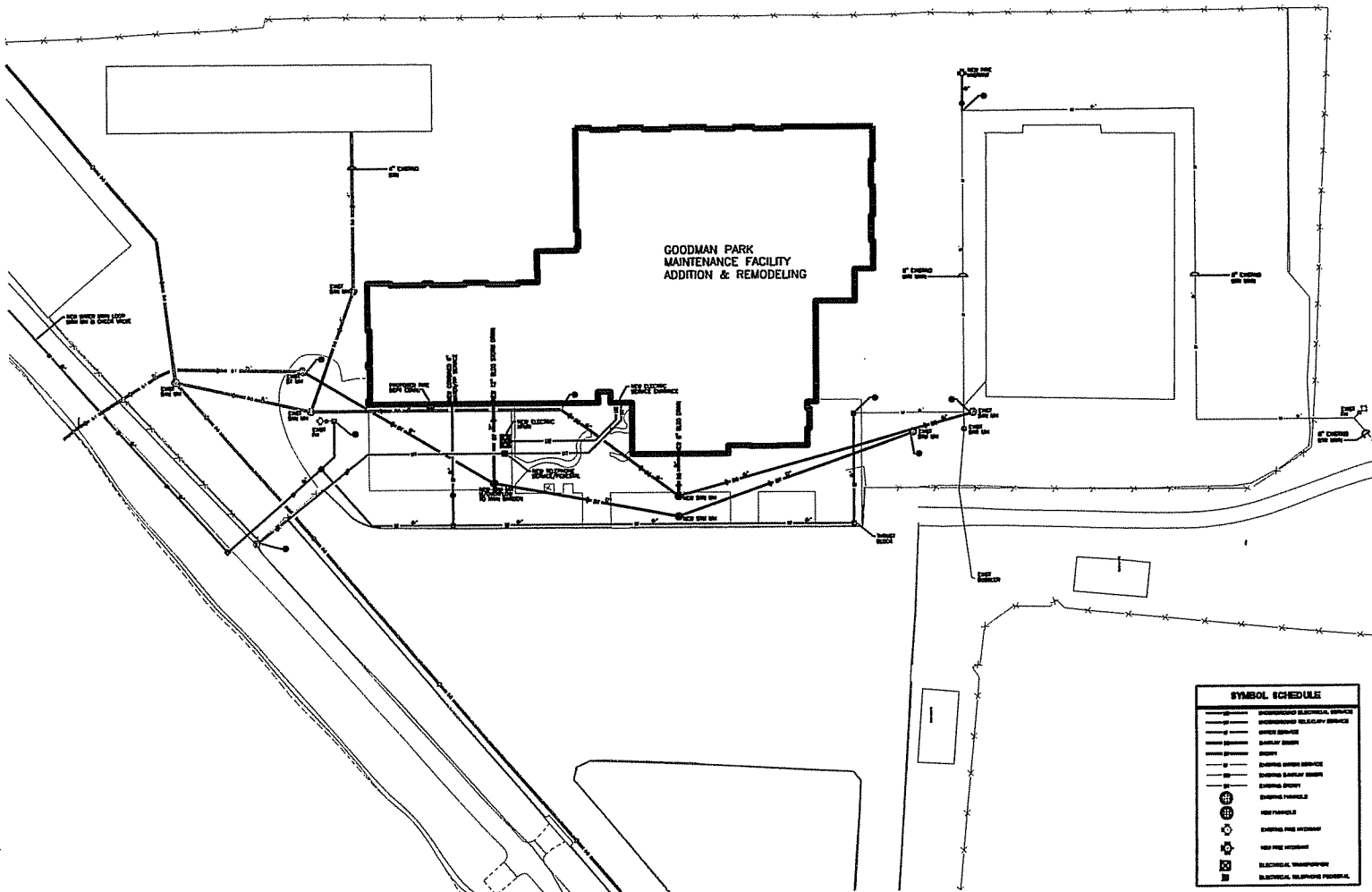


GOODMAN PARK MAINTENANCE FACILITY
 ADDITION & REMODELING
 1402 WINGRA PARKWAY, MADISON, WI 53715
 CITY OF MADISON - PARKS DEPT.

Sheet Title: **PLANTING PLAN**

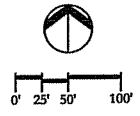
Project Number: 2733
 Date Issued: 12.07.05
 Drawn By: P.H.
 Checked By: RLS

Sheet Number: **L-5**



SITE UTILITY PLAN
1" = 20'-0"

SYMBOL SCHEDULE	
	UNDERGROUND ELECTRICAL SERVICE
	UNDERGROUND UTILITY SERVICE
	WATER SERVICE
	SANITARY SEWER
	STORM SEWER SERVICE
	GAS SERVICE
	ELECTRICAL SERVICE
	MANHOLE
	ELECTRICAL TRANSFORMER
	ELECTRICAL METER
	ELECTRICAL EQUIPMENT



Drawing made by: [Name] Date: [Date] Project No: [Number]

BrayAssociates ARCHITECTS, INC.
 1428 North 10th Street
 Milwaukee, WI 53242
 Phone: (414) 833-4775
 FAX: (414) 833-2019

HEIN Engineering Group
 200 N. 10th Street
 Milwaukee, WI 53233
 Phone: (414) 224-2000
 Fax: (414) 224-2000
 www.heineng.com

Project: Goodman Park Maintenance Facility - Addition & Remodeling

Location: Madison, Wisconsin

Project Number: [Number]

Client: Parks Division, City of Madison

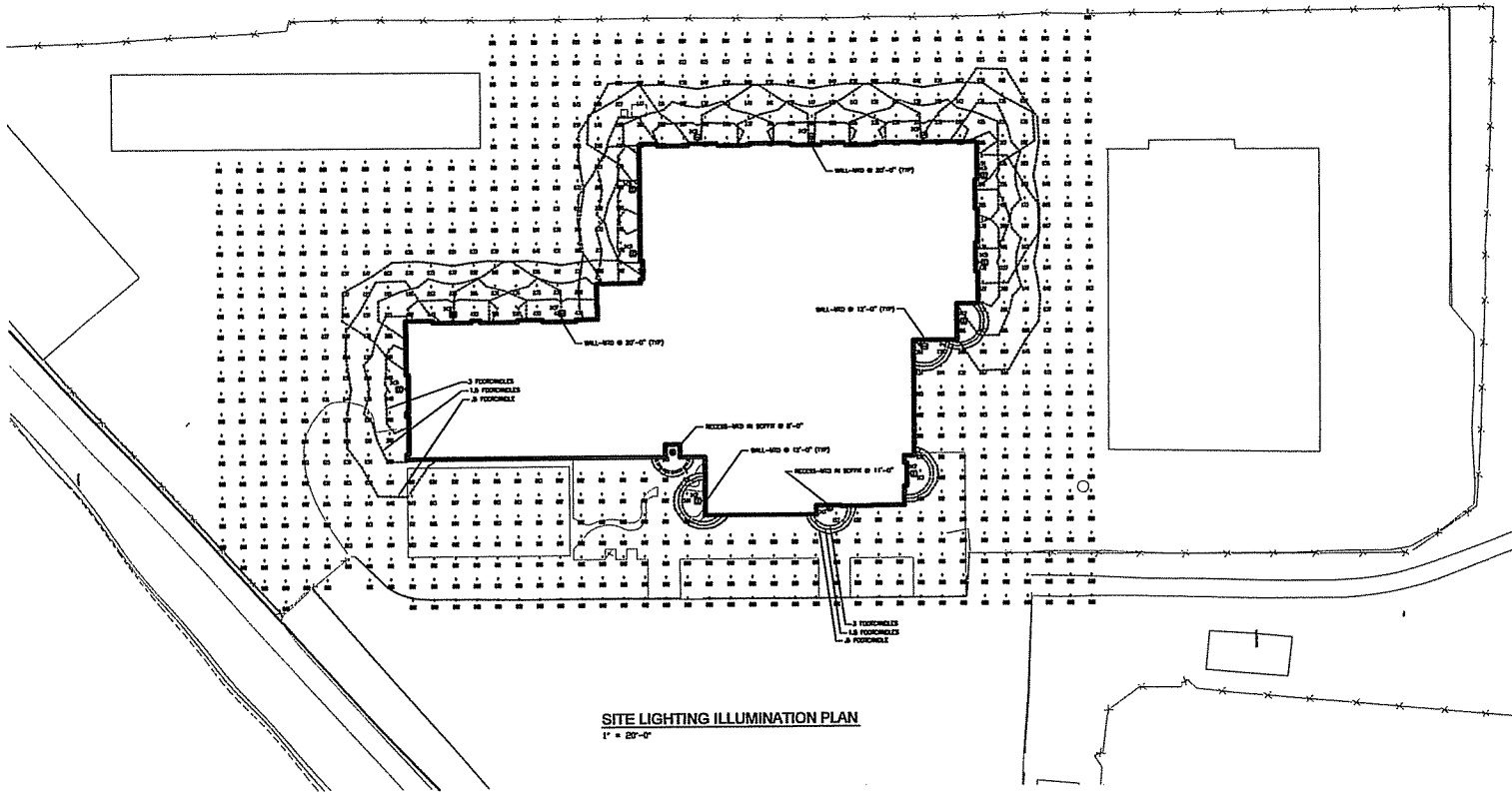
Scale: [Scale]

Sheet Title: SITE UTILITY PLAN

Drawn by:	Checked by:	Date:

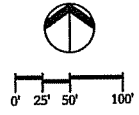
Project Number: 2733
Drawn by: DAS
Date: 12-8-15
Checked by: LAKE HEIN

Sheet Number: SU-1



SITE LIGHTING ILLUMINATION PLAN
1" = 20'-0"

ITEM	SYMBOL	DESCRIPTION	TYPE	FUNCTION	PLACEMENT/DETAIL	ILL.	UNIT
11	○	RECESSED ROOF LIGHT - 71W WPS	CD LIGHT	2000	ROOF - REFER TO DWG	6.50	2
12	□	WALL-HGT LIGHT - 50W WPS	CD LIGHT	2000	WALL-HGT @ 27'-0"	6.50	4
13	□	WALL-HGT LIGHT - 50W WPS	CD LIGHT	2000	WALL-HGT @ 25'-0"	6.50	8



Drawing issued by: 10/10/2005 10:00 AM Project No. 05-05-27333-01-01-01

BrayAssociates ARCHITECTS, INC.
1548 NORTH 100TH STREET ROAD
MILWAUKEE, WI 53222
PHONE (414) 834-8775
FAX (414) 834-2517

HEHN Engineering Group
and its affiliates
1000 W. WISCONSIN AVENUE
MILWAUKEE, WI 53233
PHONE (414) 224-1200
FAX (414) 224-1202
WWW.HEHNENR.COM
PROJECT NO. 1007

Project:
Goodman Park
Maintenance
Facility - Addition
& Remodeling

**Madison,
Wisconsin**

Project Number:

Client:
Parks Division
City of Madison

Drawings:

Sheet Title:
**SITE LIGHTING
ILLUMINATION
PLAN**

Revisions:
No. Description Date

Project Number: 27333
Drawn By: DAS
Date Issued: 12-5-05
Checked By: LMKC HEHN

Sheet Number:
SL-1

X2 WALL BRACKET SOFT SQUARE



PORTFOLIO

DESCRIPTION

Round cylinder or soft square wall mount fixture in choice of white or bronze finish. Can be used to blend with or accent varying architectural styles. Reflector provides 45° cutoff to lamp. Optically, the batwing light distribution provides even illumination with high efficiency.

SPECIFICATION FEATURES

A--Reflector

Specular clear or gold Alzak® reflector, .040 thick aluminum with a spun parabolic contour. Positive reflector mounting via keyed holes and screws. Baffle is seamless black grooved aluminum.

B--Housing

Round or soft square fabricated .052 thick aluminum housings available in white or bronze finish.

C--Mounting Frame

Stamped prepolymerized steel #16 GA, .060 thick.

D--Mounting

Wall mounting bracket installs to wall mounted junction box.

E--Sockets

Mogul base porcelain socket with nickel plated brass screw shell.

F--Mounting Arm

Extruded aluminum for better heat dissipation.

G--Wiring Harness

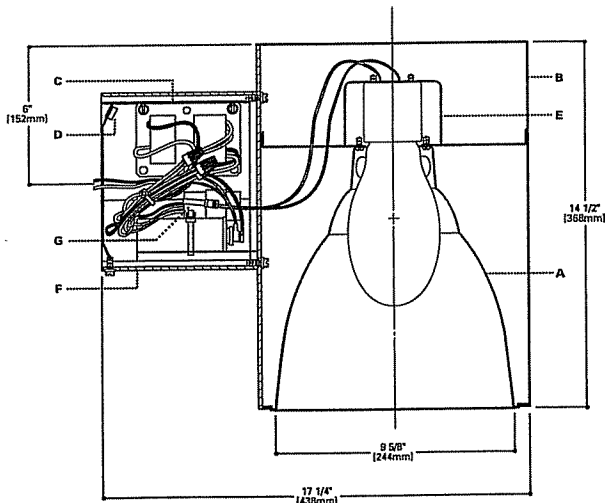
From ballast assembly, plugs into fixture. No tools required.

Electrical

Multi-tap ballast for use with 120, 208, 240 and 277V.

Labels

U.L. listed, C.S.A. certified, standard wet label, IBEW union made.



M8005/15-637
M8005/15-647
M8005/15-657

70W - 150W HPS

10" ROUND/
SOFT SQUARE

WALL MOUNT

ENERGY DATA

70W HPS
Input Watts: 94
Operating/Starting Current:
120V=0.82/0.90
208V=0.43/0.50
240V=0.41/0.44
277V=0.35/0.35
Power Factor: 90%

100W HPS
Input Watts: 128
Operating/Starting Current:
120V=1.14/1.80
208V=0.60/0.65
240V=0.57/0.41
277V=0.48/0.35
Power Factor: 90%

150W HPS
Input Watts: 183
Operating/Starting Current:
120V=1.66/3.00
208V=0.89/1.10
240V=0.83/0.95
277V=0.72/0.88
Power Factor: 90%

NOTES: Accessories should be ordered separately. For additional options please consult your Cooper Lighting Representative. Alzak is a registered trademark of Aluminum Company of America.

ADV85174

ORDERING INFORMATION

SAMPLE NUMBER: M8005P-657-76000C

Complete unit consists of housing, ballast and trim.

Unit	Finishes	Ballast	Trims
M8005P-Soft Square	Powder Coat Finishes P=White BZ=Bronze	847-100W HPS (120, 240, 277V) 847-100W HPS (120, 208, 240, 277V)	Specular Reflectors 493000=Clear (for 70W) 740000=Gold (for 70W) 74000C=Clear (for 100W) 74000Y=Gold (for 100W) 750000=Bronze (for 150W) 750000=Gold (for 150W) Baffle 720003A=Black Baffle (for 70W) 740003A=Black Baffle (for 100W) 750003A=Black Baffle (for 150W)

COOPER LIGHTING

X1 RECESSED CAN



PORTFOLIO

DESCRIPTION

A low brightness 8" aperture recessed downlight for use with 70W High Pressure Sodium lamps. The precisely formed specular Alzak® parabolic reflector minimizes aperture brightness and provides a 45° visual cutoff to lamp. The socket cap adjusts for high or low settings. The snap lock assures proper source and reflector focus that will not be disturbed by normal maintenance. Optically, the resulting batwing light distribution provides even illumination with high efficiency.

SPECIFICATION FEATURES

A--Reflector

Specular clear or gold Alzak® reflector, .050 thick aluminum with a spun parabolic contour. Positive reflector mounting via keyed holes and screws. Baffle is black seamless aluminum.

SPECIFICATION FEATURES

B--Trim Ring Options

High impact polymer with satin white finish, metal trim ring, rimless trim ring or self flanged reflector.

C--Socket Cap

Heat dissipating die-cast aluminum, .080 wall thickness. Adjusts and locks without tools for two beam distributions.

D--Housing/Mounting Frame

Precision die-cast aluminum 1 1/2" deep collar accommodates varying dimensions of ceiling materials. Stamped steel mounting frame (#16GA, .060).

E--Universal Mounting Bracket

Exclusive universal mounting bracket accepts 1/2" EMT, C channel, T bar fasteners, and bar hangers. Adjusts 5" vertically from above or below ceiling.

F--Conduit Fittings

Die-cast screw tight

connectors.

G--Junction Box

U.L. listed for four in, four out #12 at 90°C pull through branch wiring. Positioned on ballast mounting bracket to allow straight conduit runs. Knockouts for six 1/2" and three 3/4" conduits. Access to junction box by removing reflector.

H--Ballast

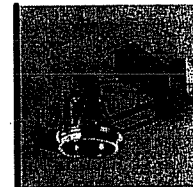
Quick mount plug-in thermally protected ballast with dual tap for 120/277V. Ballast secures to mounting frame with spring lock.

Insulation Detector

Provides protection against improper use of ceiling insulation.

Labels

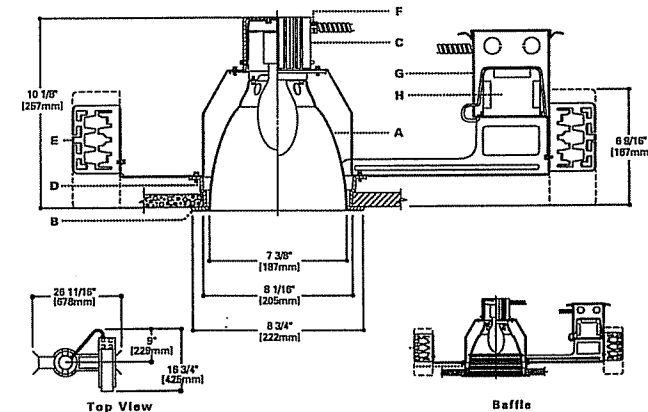
U.L. Listed, CSA Certified, standard damp label, IBEW union made.



M7800T-630

70W
HPS

7 3/8" REFLECTOR



ORDERING INFORMATION

SAMPLE NUMBER: M7800T-630-63800C

Complete unit consists of housing, ballast and trim.

Housing	Ballast	Options	Trims	Accessories
M7800T	630-70W HPS (120/277V)	F=Fuse Q=Quartz (Consult Factory) X=Quartz (Socket Only)	Specular Reflectors 63800C=Clear 63800Y=Gold Self Flanged Specular Reflectors 63801C=Clear 63801Y=Gold Baffle 638003A=Baffle	Metal Trim Rings TRM3-P=White TRM3-B=Black Rimless Trim Ring TR58 Shaded Ceiling Adapter HSA=Specify 5" Strip 1 1/2" C Channel Bar Hangers HBS2=20" Long HBS3=50" Long

COOPER LIGHTING

ENERGY DATA

70W HPS
Input Watts: 90
Operating/Starting Current:
120V=.82/1.00
277V=.35/0.50
Power Factor: 90%

NOTES: Accessories should be ordered separately. For additional options please consult your Cooper Lighting Representative. Alzak is a registered trademark of Aluminum Company of America.

ADV85131

Catalog Number	
Notes	Type
WALL BRACKET	X3

FEATURES & SPECIFICATIONS

INTENDED USE — For building- and wall-mounted applications.

CONSTRUCTION — Rugged, die-cast, single-piece aluminum housing. Die-cast door frame has a 1/8" thick tempered glass lens. Door frame is fully gasketed with one-piece solid silicone.

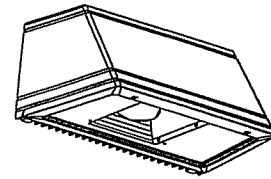
FINISH — Standard finish is new textured dark bronze (DBBT) corrosion-resistant polyester powder finish, with other architectural colors available.

OPTICAL SYSTEM — Segmented reflectors for superior uniformity and control. Reflectors are interchangeable. Three full cutoff distributions available: FT (forward throw), MD (medium throw) and WT (wide throw).

ELECTRICAL SYSTEM — 50W-150W utilizes a high reactance, high power factor ballast. 35S utilizes a reactance high power factor ballast. 175W utilizes a constant-wattage autotransformer ballast. Quick disconnect plug easily disconnects reflector from ballast. Ballasts are copper-wound and 100% factory-tested. Porcelain, medium-base socket with copper alloy, nickel-plated screw shell and center contact. UL listed 660W, 600V 4KV pulse rated.

INSTALLATION — Universal mounting mechanism with integral mounting support allows fixture to hinge down. Bubble level provides correct alignment with each installation.

LISTING — UL Listed (standard), CSA Certified (see Options). Suitable for wet locations (damp location listed in lens-up orientation). WLU option offers wet location listing in up orientation (see Options). IP rated.



Decorative Wall-Mounted Lighting

WST

METAL HALIDE
50W-175W
HIGH PRESSURE SODIUM
35W-150W

Standard dimensions - WST

Length: 16.25 (41.2)
Depth: 9.13 (23.2)
Overall Height: 7.25 (18.4)
Max. Weight: 30 lbs (13.6 kg)

All dimensions are inches (centimeters) unless otherwise specified.

ORDERING INFORMATION

Example: WST 175M FT 120 SF LPI DNAT

Choose the boldface catalog nomenclature that best suits your needs and write it on the appropriate line.

Series	Wattage/Source	Distribution	Voltage	Options	
WST	Metal Halide	FT Forward throw	120	Shipped Installed In Fixture	Architectural Colors ⁴
	50M	MD Medium throw	208 ²		SF Single fuse (120,277,347V, n/a TB)
	70M	(coated lamp std.)	240 ²	DF Double fuse (208,240V, n/a TB or TBV)	DBBT Dark bronze (std.)
	100M	WT Wide throw	277	EC Emergency circuit (25W max 120V, incandescent lamp included)	DSST Sandstone
	150M		347	DC12 Emergency circuit 12 volt (35W lamp included std. ³)	DNAT Natural aluminum
	175M		TB³	QRS Quartz restrike system (100W max 120V, quartz lamp not included)	DWHG White
	High Pressure Sodium		TBV⁴	CR Corrosion-resistant finish (epoxy clear coat over paint)	DBLB Black
	35S ¹			CRT Corrosion-resistant (Teflon, black only)	Optional Textured Colors
	50S			PE Photoelectric cell-button type (n/a TB/TBV ³)	DBNH Bronze
	70S			WLU Wet location door for up orientation	DSPD Dark gray
100S			IBS Internal backlight shield ⁷	DSPJ Light gray	
150S			DFL Diffusing lens	DSPG Green	
			LPI Lamp included (std)	DSPQ Dark red	
			L/LP Less lamp	DSPF Rust	
			CSA CSA Certified	DSPH Red	
			Shipped Separately	Striping	
			WSBBW Surface-mounted back box	SDBB Dark bronze	
			UTS Uplit 5 degrees	SDWH White	
			WSTWG Wire guard ⁸	SDBL Black	
			WSTVG Vandal guard ⁸	SDNA Natural aluminum	
				SDSS Sandstone	
				SDTG Tennis green	
				SDBR Bright red	
				SDBUA Dark blue	
				SDBYM Gray	
				SDBLB Yellow	

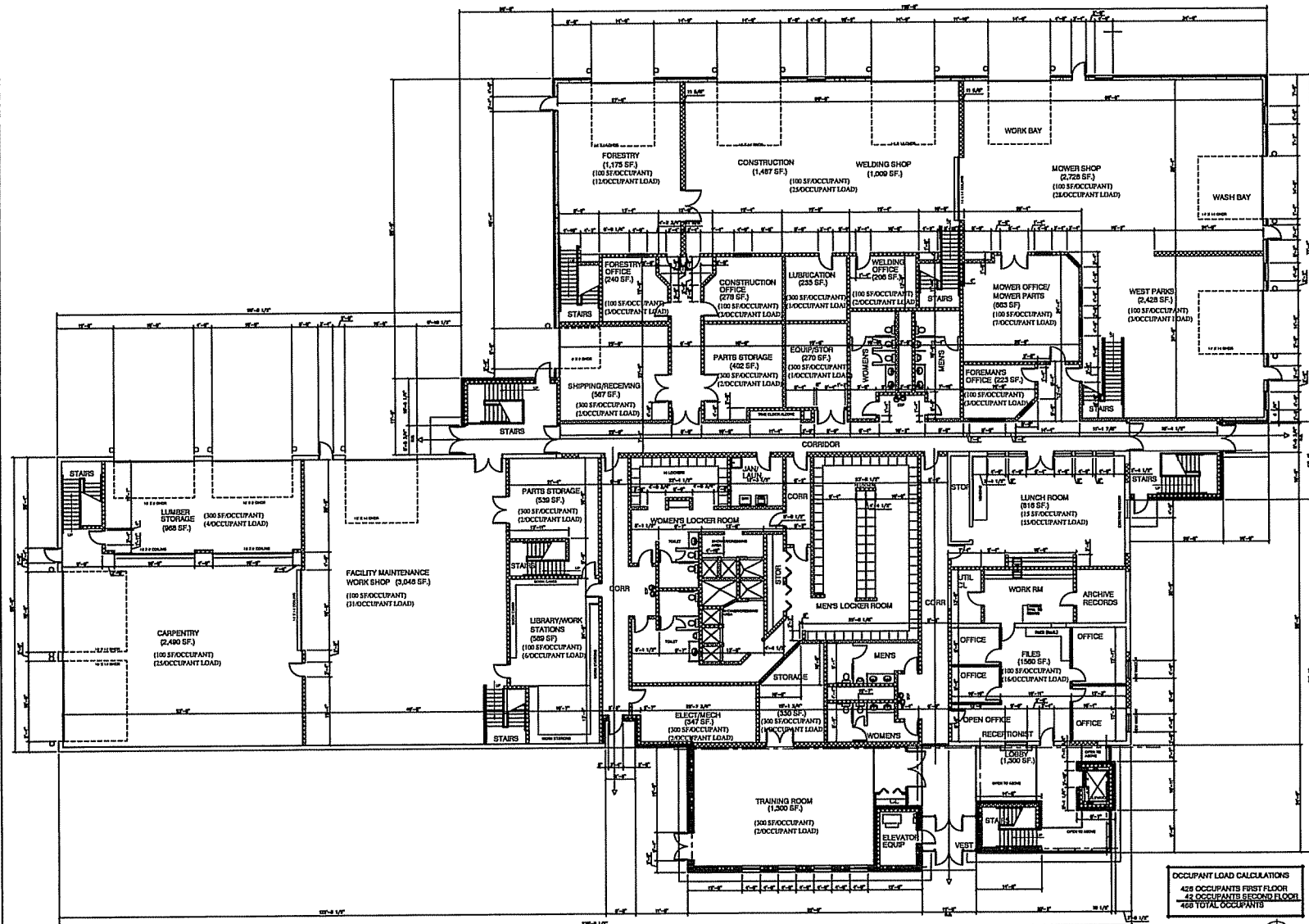
NOTES:

- 120V only.
- Consult factory for availability in Canada.
- Optional multi-tap ballast (120, 208, 240, 277V); (120, 277, 347V in Canada).
- Optional pent-tap ballast (120, 208, 240, 277, 480V; not available in Canada). 175W metal halide only.
- Not available with SF, DF or QRS.
- Must be ordered with fixture; cannot be field installed.
- Not available with medium throw (MD) distribution.
- Additional architectural colors available; see www.lithonia.com for more information.

GOODMAN PARK MAINTENANCE FACILITY
ADDITION & REMODELING

1402 WINGRA PARKWAY, MADISON, WI 53715

CITY OF MADISON - PARKS DEPT.



OCCUPANT LOAD CALCULATIONS
428 OCCUPANTS FIRST FLOOR
42 OCCUPANTS SECOND FLOOR
468 TOTAL OCCUPANTS

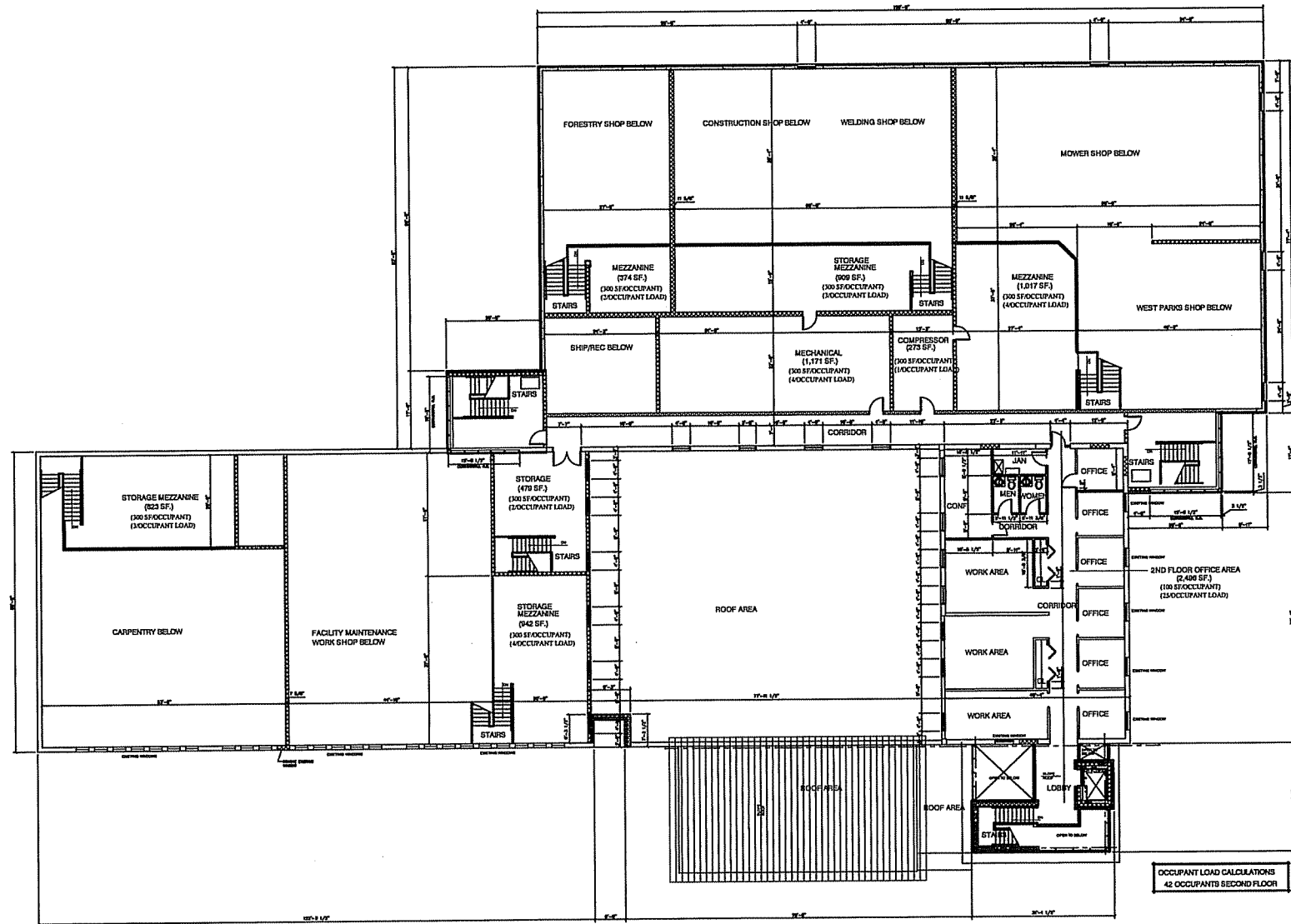
1
A11
FIRST FLOOR PLAN
SCALE 1/8" = 1'-0"

Sheet Title
FIRST FLOOR PLAN

Revisions	By	Date

Project Number:	2733	Drawn By:	Y.H.
Date Issued:	06/06/05	Reviewed By:	RICH LINDKEH

Sheet Number
A1.1



BrayAssociates
ARCHITECTS, INC.

1628 North Iron Point Road
Foshtetter, WI 53542

Phone (608) 831-5775
FAX (608) 831-2610

GOODMAN PARK MAINTENANCE FACILITY
ADDITION & REMODELING

1402 WINGRA PARKWAY, MADISON, WI 53715

CITY OF MADISON - PARKS DEPT.

Sheet No.

SECOND FLOOR PLAN

Revised	By	Reason	Date

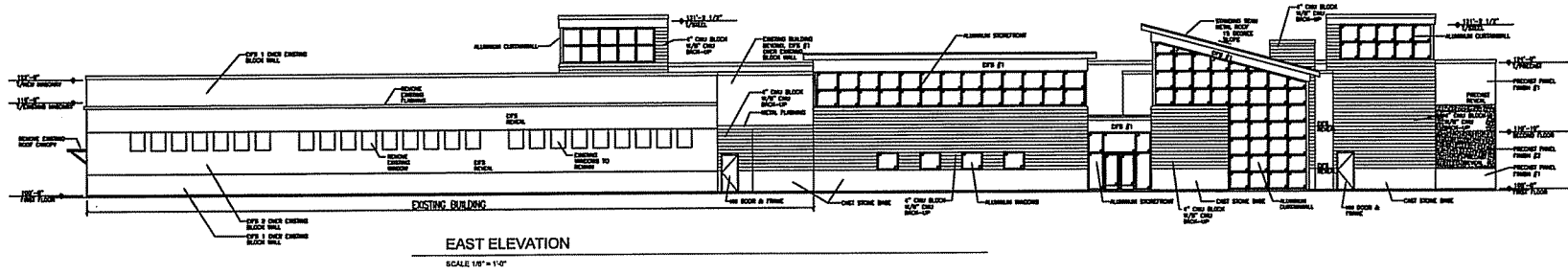
Project Number:	2733	Drawn By:	BILL D.
Date Issued:	12/07/05	Reviewed By:	RICH LUNDEN

Scale: **A1.2**

2
A1.2
SECOND FLOOR PLAN
SCALE 1/8" = 1'-0"

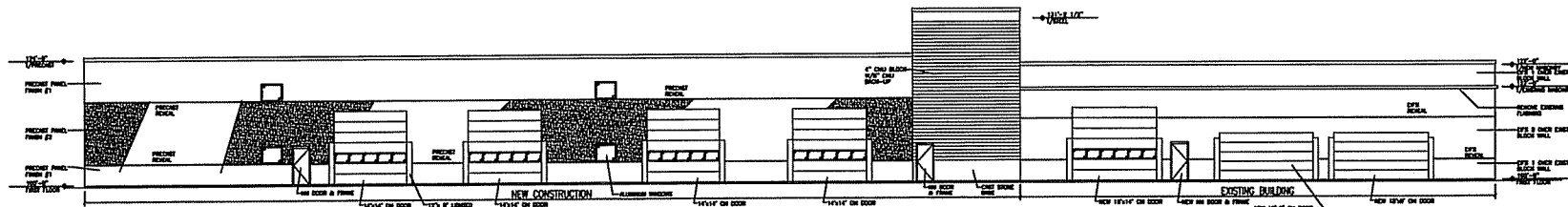
OCCUPANT LOAD CALCULATIONS
42 OCCUPANTS SECOND FLOOR

GOODMAN PARK MAINTENANCE FACILITY
ADDITION & REMODELING
1402 WINGRA PARKWAY, MADISON, WI 53715
CITY OF MADISON - PARKS DEPT.



EAST ELEVATION

SCALE 1/8" = 1'-0"



WEST ELEVATION

SCALE 1/8" = 1'-0"

Sheet Title:

EXTERIOR ELEVATIONS

Revision	Description	Date

Project Number: 2733
Drawn By: ERL D.
Date Plotted: 12/07/05
Reviewed By: RICH LUNDQVIST

Sheet Number:
A2.1



Copyright © 2005 Bray Associates, Inc.

Bray Associates
ARCHITECTS, INC.

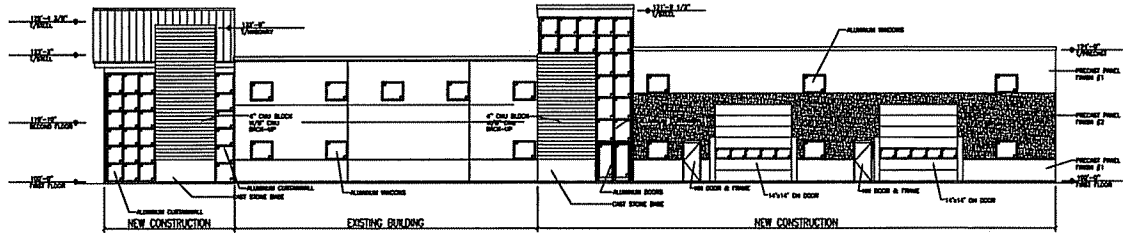
1165 NORTH IRON FRONT ROAD
HOOVER, WI 53542

PHONE (608) 831-9775
FAX (608) 831-2610

GOODMAN PARK MAINTENANCE FACILITY

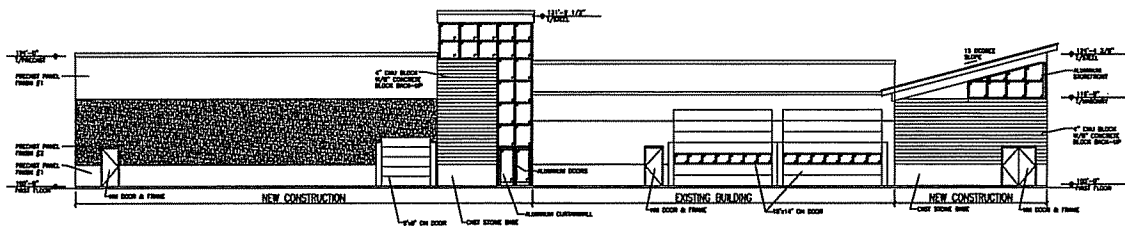
ADDITION & RENOVATING
1402 WINGRA PARKWAY, MADISON, WI 53715

CITY OF MADISON - PARKS DEPT.



NORTH ELEVATION

SCALE 1/8" = 1'-0"



SOUTH ELEVATION

SCALE 1/8" = 1'-0"

Sheet Title

EXTERIOR ELEVATIONS

Rev.	Description	Date

Project Number: 2733	Drawn By: BRIAN D.
Date Issued: 12/07/05	Reviewed By: RICH LUNDEEN

Sheet Number:

A2.2

