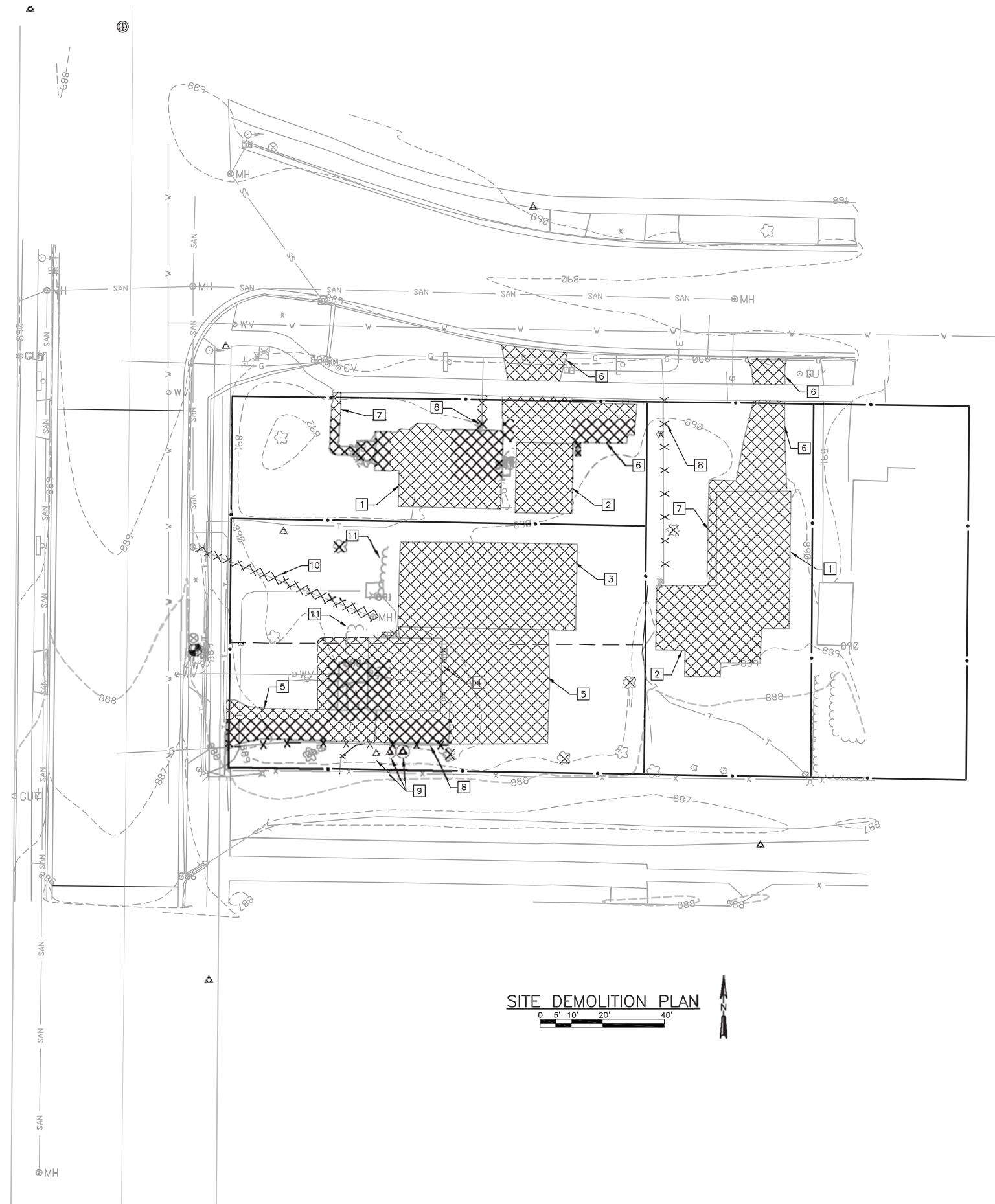


LOCATION MAP
1613 NORTH SHERMAN AVENUE

WELL NO. 7 RECONSTRUCTION
 MADISON WATER UTILITY
 DANE COUNTY, WISCONSIN



FIGURE 1
1020.072



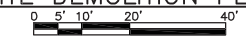
GENERAL NOTES:

1. UNLESS NOTED BELOW REMOVAL OF STRUCTURES AND OTHER IMPROVEMENTS ARE BY CONTRACTOR.
2. SALVAGE EXTERIOR STONE ON WELL AND RESERVOIR FOR RE-USE AS SHOWN ON DRAWINGS.

KEY NOTES:

- 1 REMOVE EXISTING HOUSE BY MADISON WATER UTILITY.
- 2 REMOVE EXISTING GARAGE BY MADISON WATER UTILITY.
- 3 REMOVE EXISTING GROUND LEVEL RESERVOIR.
- 4 REMOVE EXISTING WELL HOUSE.
- 5 REMOVE EXISTING ASPHALT/CONCRETE DRIVEWAY.
- 6 REMOVE EXISTING CONCRETE DRIVEWAY APRONS.
- 7 REMOVE SIDEWALK.
- 8 REMOVE/ABANDON EXISTING UTILITIES TO DEMOLISHED STRUCTURES. COORDINATE WITH RESPECTIVE UTILITIES.
- 9 PROTECT EXISTING MONITORING WELL.
- 10 REMOVE EXISTING MANHOLE AND SANITARY SEWER LATERAL.
- 11 REMOVE EXISTING BUSHES.

SITE DEMOLITION PLAN



DATE:	NO.	REVISIONS

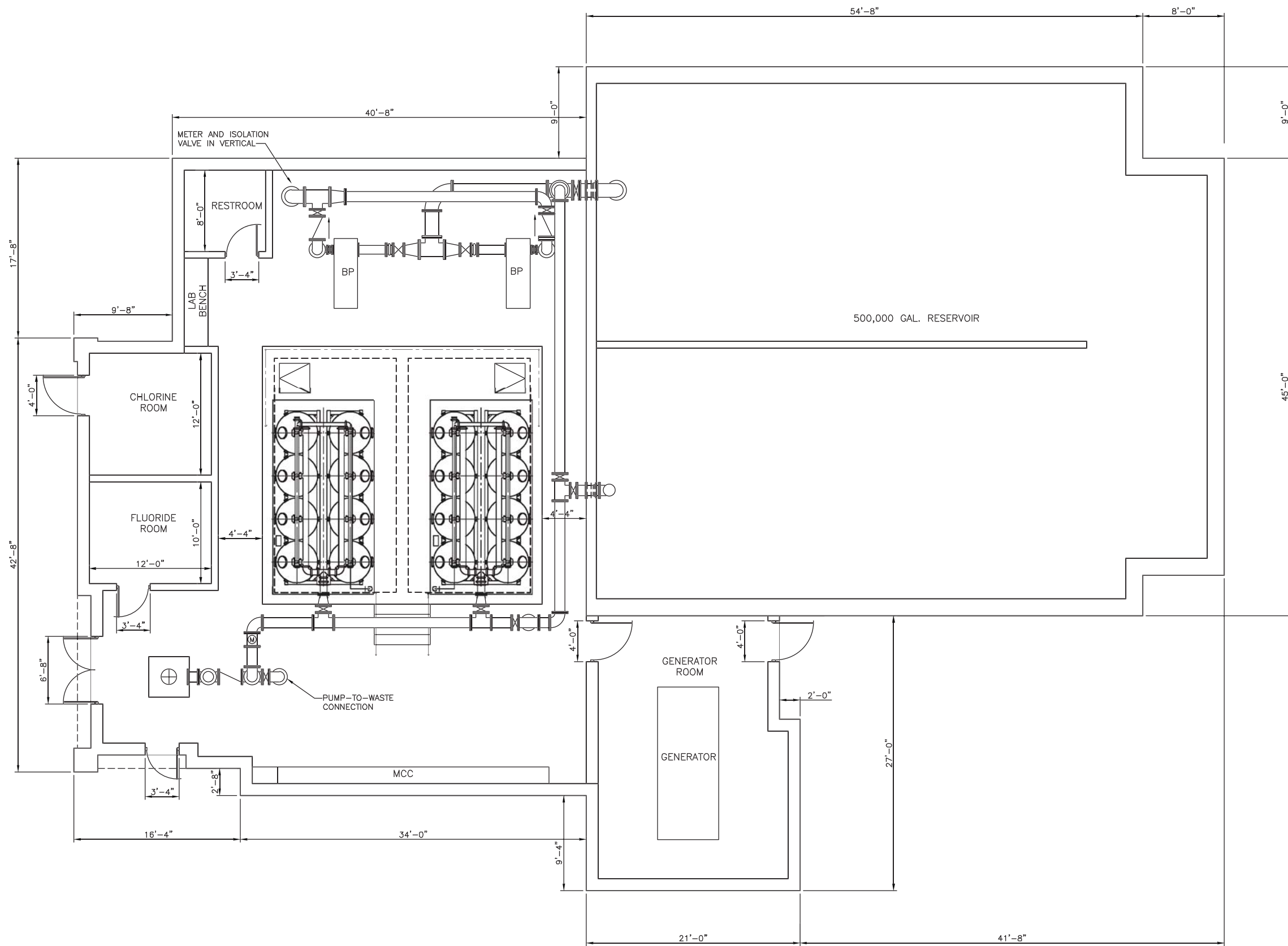
SITE DEMOLITION PLAN

WELL NO. 7 RECONSTRUCTION
 1613 N. SHERMAN AVENUE
 CITY OF MADISON
 MADISON, WISCONSIN

JOB NO.
1020.072
PROJECT MGR.
MARK OLEINIK



SHEET
D1.1



FLOOR PLAN
 0 1' 2' 4' 8'

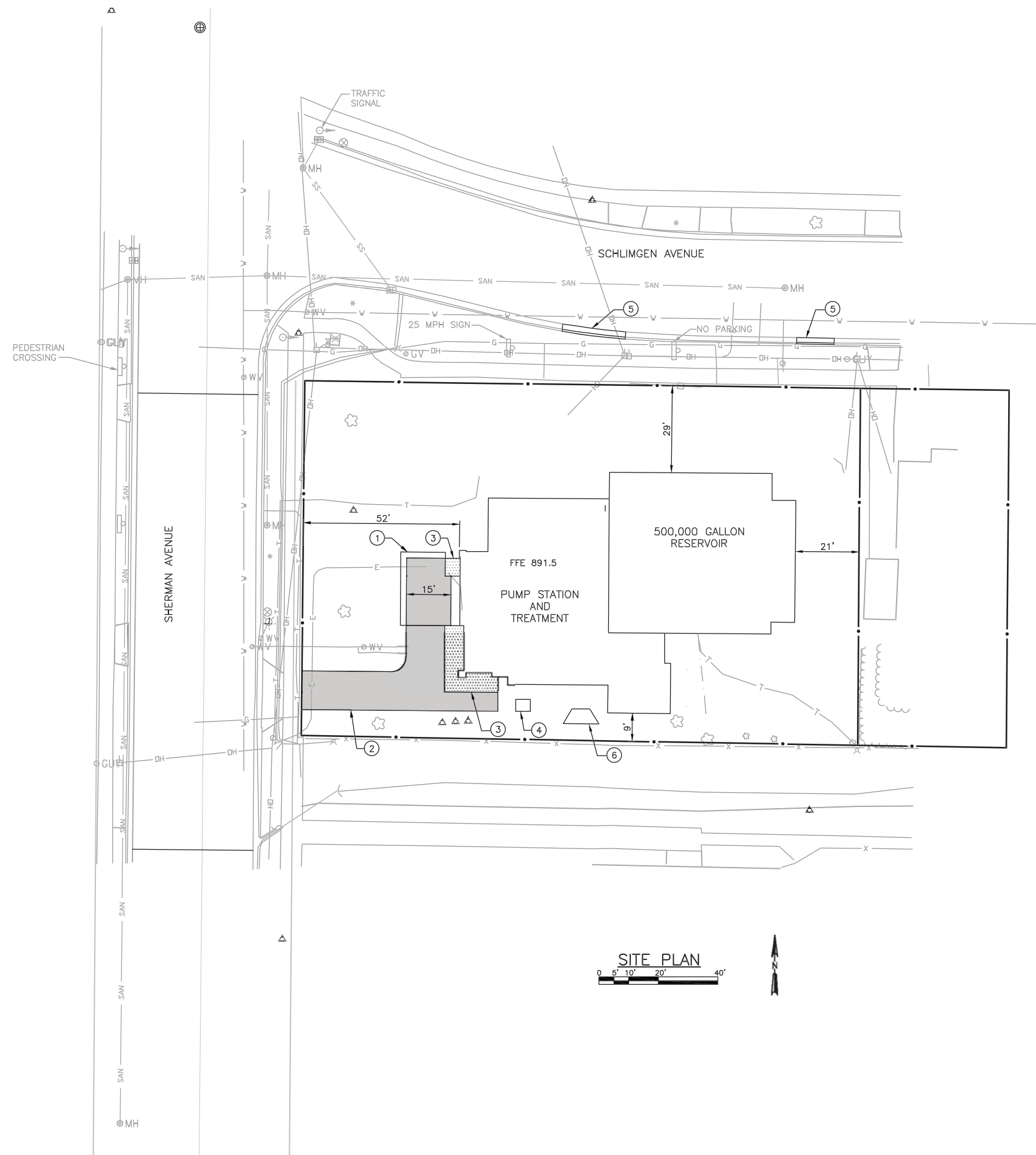
NO.	REVISIONS	DATE:

FLOOR PLAN
 WELL NO. 7 RECONSTRUCTION
 1613 N. SHERMAN AVENUE
 CITY OF MADISON
 MADISON, WISCONSIN

JOB NO.
1020.072
 PROJECT MGR.
MARK OLEINIK



SHEET
A1.1



- KEY NOTES:**
- ① 3-FOOT TALL, 2 FOOT THICK WALL.
 - ② ASPHALT DRIVE.
 - ③ CONCRETE STOOP.
 - ④ ELECTRICAL TRANSFORMER.
 - ⑤ NEW CURB AND GUTTER, MATCH EXISTING SECTION AND GRADE. SEE STANDARD SPECIFICATIONS.
 - ⑥ OVERFLOW STRUCTURE.

- LEGEND:**
- [Pattern] EXISTING ASPHALT PAVEMENT
 - [Pattern] EXISTING SIDEWALK/CONCRETE PAVEMENT
 - [Pattern] EXISTING GRAVEL
 - [Pattern] NEW ASPHALT PAVEMENT
 - [Pattern] NEW SIDEWALK/CONCRETE PAVEMENT
 - [Pattern] EROSION CONTROL MAT
 - [Pattern] STONE MULCH
 - [Pattern] NEW GRAVEL



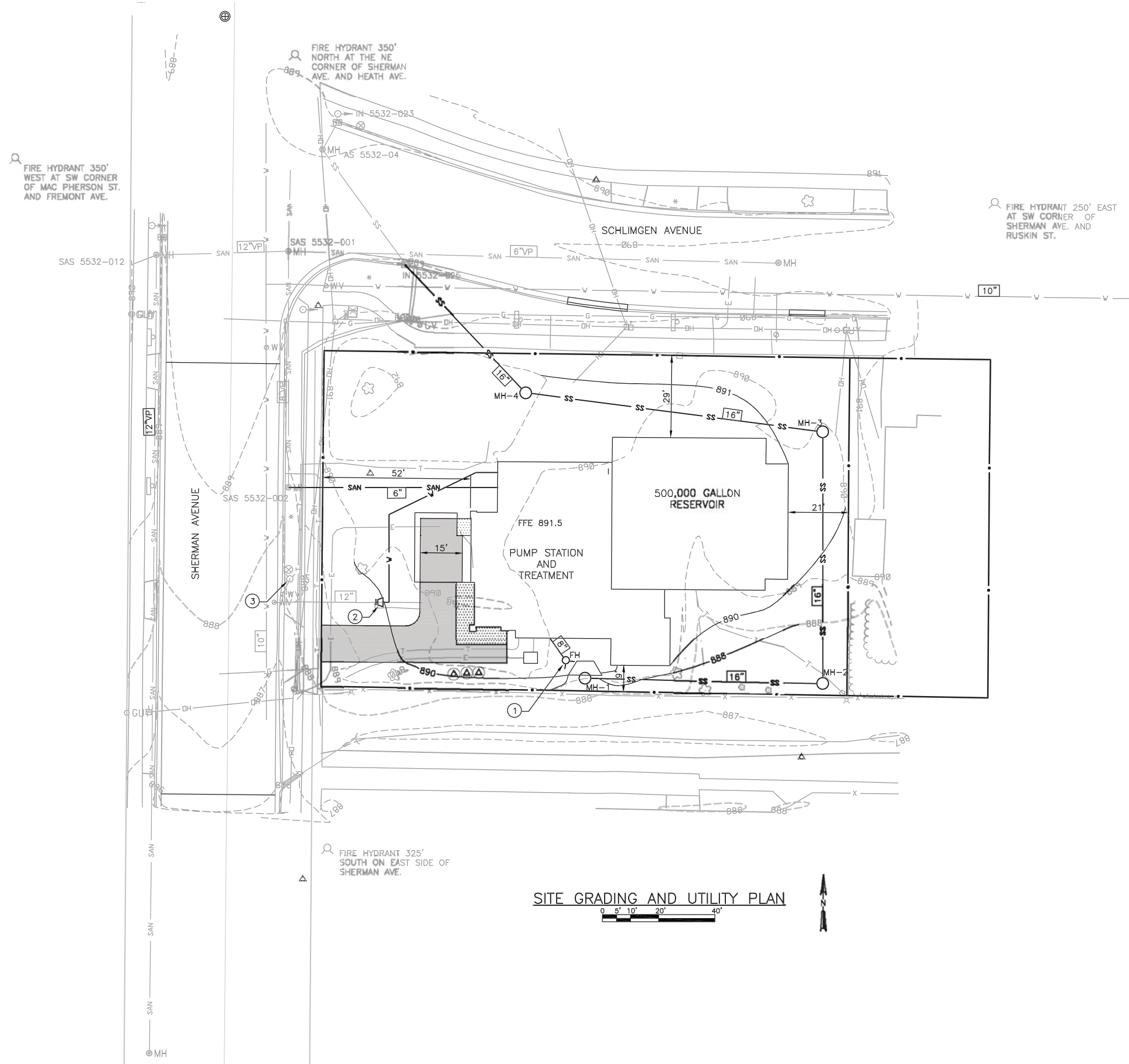
NO.	REVISIONS	DATE:

OVERALL SITE PLAN
WELL NO. 7 RECONSTRUCTION
1613 N. SHERMAN AVENUE
CITY OF MADISON
MADISON, WISCONSIN

JOB NO.
1020.072
PROJECT MGR.
MARK OLEINIK



SHEET
C1.2



SITE GRADING AND UTILITY PLAN
 0 5' 10' 20' 40'

KEY NOTES:

- ① FLUSHING HYDRANT PAINT WHITE
- ② 12x16 REDUCER WITH ISOLATION VALVE.
- ③ EXISTING HYDRANT W/ ISOLATION VALVE.

MANHOLE NOTES:

SAS 5432-012	
RIM	889.56
IE. E	870.38 12"VP
IE. W	881.08 6"(LATERAL)
IE. S	870.36 12"VP
SAS 5532-001	
RIM	889.56
IE. N	870.63 10"VP
IE. S	875.43 8"VP
IE. W	870.52 12"VP
IE. E	882.87 6"VP
	870.89 DROP 6"VP
SAS 5532-002	
RIM	888.70
IE. N	876.39 8"VP
IE. E	876.50 8"VP (LATERAL)
IE. S	876.38 8"VP
IN 5532-025	
RIM	808.67
IE. N	883.13 12"RCP
IE. S	883.2 16"DI
AS 5532-04	
RIM	888.92
IE. S	884.48 12"RCP
IE. NE	884.33 12"RCP
IE. N	883.13 15"RCP
MH-1	
RIM INLET	888.3
IE. E	886.3 16"DI
MH-2	
RIM	887.5±
IE. W	885.8 16"DI
IE. N	888.8 16"DI
MH-3	
RIM	890.3±
IE. S	885.2 16"DI
IE. W	885.2 16"DI
MH-4	
RIM	891.2
IE. E	884.6 16"DI
IE. N	884.6 16"DI

LEGEND:

- EXISTING ASPHALT PAVEMENT
- EXISTING SIDEWALK/CONCRETE PAVEMENT
- EXISTING GRAVEL
- NEW ASPHALT PAVEMENT
- NEW SIDEWALK/CONCRETE PAVEMENT
- EROSION CONTROL MAT
- STONE MULCH
- NEW GRAVEL

DATE:	NO.	REVISIONS
05/08/13	1	PLANNING COMMISSION SUBMITTAL

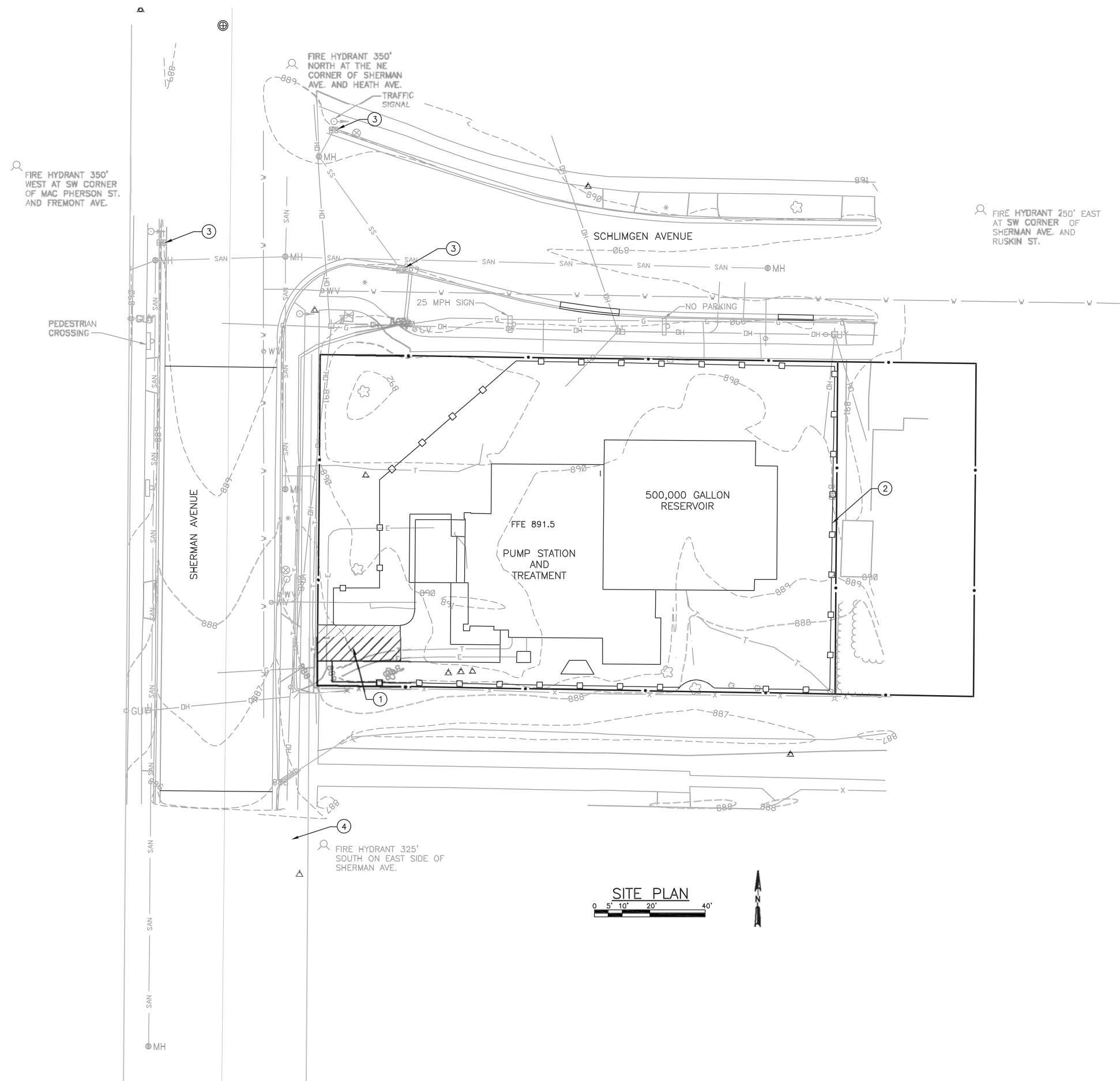
SITE GRADING AND UTILITY PLAN

WELL NO. 7 RECONSTRUCTION
 1613 N. SHERMAN AVENUE
 CITY OF MADISON
 MADISON, WISCONSIN

JOB NO.
 1020.072
 PROJECT MGR.
 MARK OLEINIK



SHEET
 C1.3



- KEY NOTES:
- ① STONE TRACKING MAT.
 - ② SILT FENCE.
 - ③ PROVIDE INLET PROTECTION.
 - ④ PROVIDE INLET PROTECTION ON NEXT TWO DOWNSTREAM INLETS.

SITE PLAN
 0 5' 10' 20' 40'



DATE:	NO.	REVISIONS
05/08/13	1	PLANNING COMMISSION SUBMITTAL

EROSION CONTROL PLAN
 WELL NO. 7 RECONSTRUCTION
 1613 N. SHERMAN AVENUE
 CITY OF MADISON
 MADISON, WISCONSIN

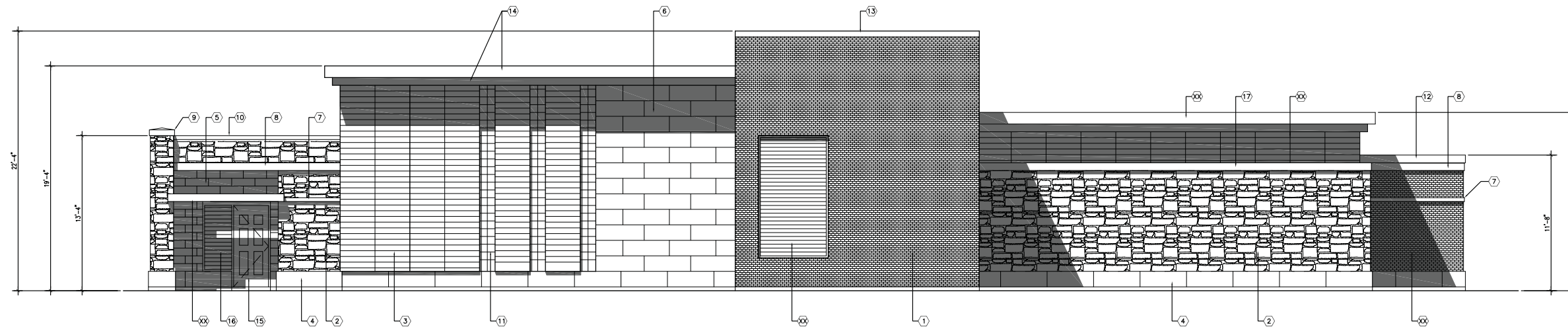
JOB NO.
1020.072
 PROJECT MGR.
MARK OLEINIK



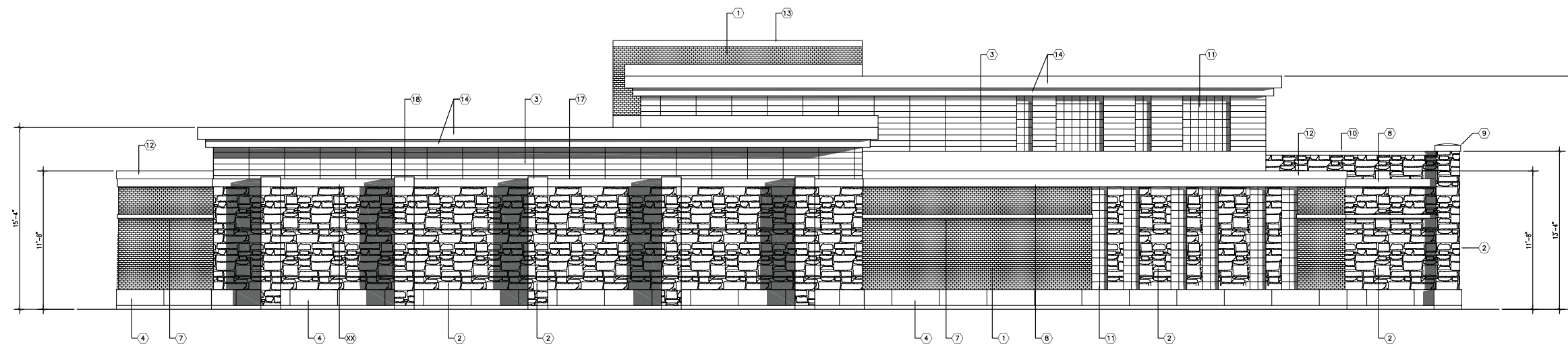
SHEET
C1.5

Consultants:

Notes:



2 SOUTH ELEVATION
A101 1/4" = 1'-0"



1 NORTH ELEVATION
A101 1/4" = 1'-0"

KEYNOTES

- | | | | |
|---|--|--|--|
| <p>1 BRICK VENER:
MFR: SOUX CITY BRICK
TYPE: MODULAR, RUNNING BOND
COLOR: TOASTED FINE ART SMOOTH</p> <p>2 STONE VENER:
MFR: MICHEL'S STONE
TYPE: HAMILTON CREAM</p> <p>3 TERRA COTTA:
MFR: NEA CERA
TYPE: STACK BOND INSTALL
COLOR: UMBRA GRAY, NATURAL FINISH</p> <p>4 CAST STONE:
MFR: HERITAGE CAST STONE
TYPE: CHAMFERED BAND 16"H x 48"L
COLOR: 5TH</p> <p>5 CAST STONE VENER:
MFR: HERITAGE CAST STONE
TYPE: 8"H x 24"L STONE
COLOR: SMOOTH, 5TH</p> | <p>6 CAST STONE VENER:
MFR: HERITAGE CAST STONE
TYPE: 16"H x 48"L STONE
COLOR: SMOOTH, 5TH</p> <p>7 CAST STONE BAND:
MFR: HERITAGE CAST STONE
TYPE: 4"H CHAMFERED BAND
COLOR: GUNPOWDER</p> <p>8 CAST STONE BAND:
MFR: HERITAGE CAST STONE
TYPE: 8"H CHAMFERED BAND
COLOR: GUNPOWDER</p> <p>9 CAST STONE CAP:
MFR: HERITAGE CAST STONE
TYPE: 5"H x 26"SQ, E1102
COLOR: 5TH</p> <p>10 CAST STONE COPING:
MFR: HERITAGE CAST STONE
TYPE: 4"H x 48"L
COLOR: GUNPOWDER</p> | <p>11 GLASS BLOCK:
MFR: PITTSBURGH CORNING
TYPE: 8" x 8" x 4"
STYLE: VUE</p> <p>12 METAL FASCIA:
MFR: PAC CLAD
FINISH: KYNAR 500
COLOR: MUSKET GREY</p> <p>13 METAL FASCIA:
MFR: PAC CLAD
FINISH: KYNAR 500
COLOR: MUSKET GREY</p> <p>14 PRE FINISHED METAL ROOF EDGE:
MFR:
FINISH: KYNAR 500
COLOR: WEATHERED ZINC</p> <p>15 HM DOOR & FRAME, PAINT TO MATCH:
MFR:
COLOR:
NUMBER:</p> | <p>16 METAL LOUVER:
- FACTORY FINISH COLOR TO MATCH:
MFR:
COLOR:
NUMBER:</p> <p>17 CAST STONE COPING:
MFR: HERITAGE CAST STONE
TYPE: 8"H (FRONT EDGE) x 48"L
COLOR: GUNPOWDER</p> <p>18 CAST STONE CAP:
MFR: EDWARDS CAST STONE CO.
TYPE: 10"H x 20"SQ.
COLOR: GUNPOWDER</p> |
|---|--|--|--|

05/01/13	URBAN DESIGN INFORMATIONAL	
Date	Issuance/Revisions	Symbol

MADISON WELL #7

MADISON WATER UTILITY

MADISON, WISCONSIN

Drawing Title:

BUILDING ELEVATIONS

PL Project Number:
2012.28.00

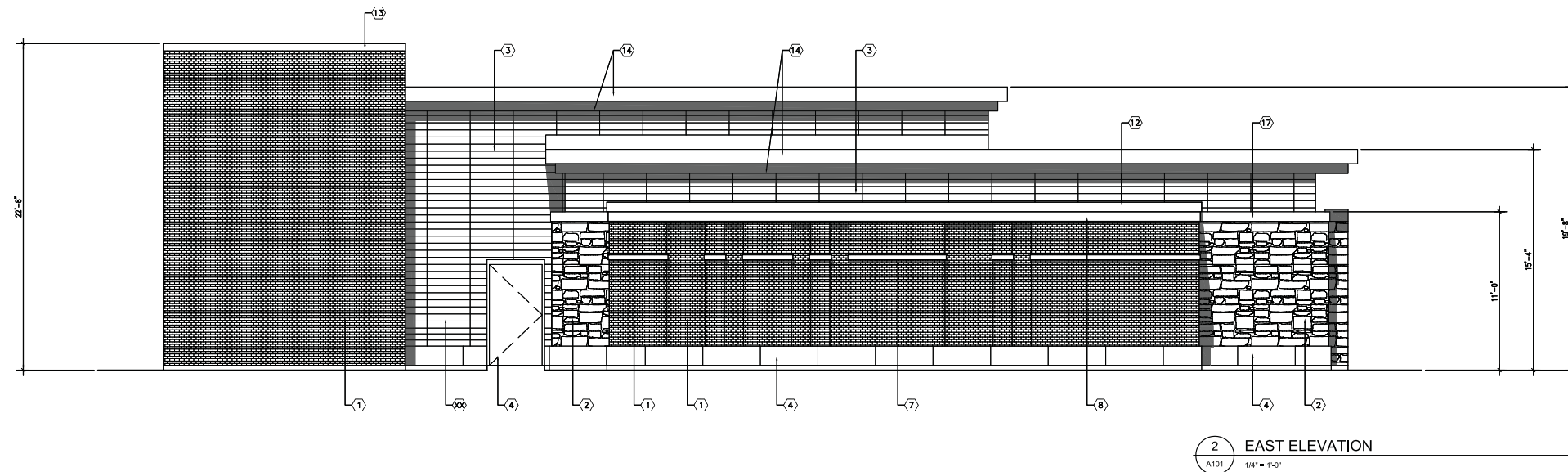
Drawing No.

Drawn By:
DMT

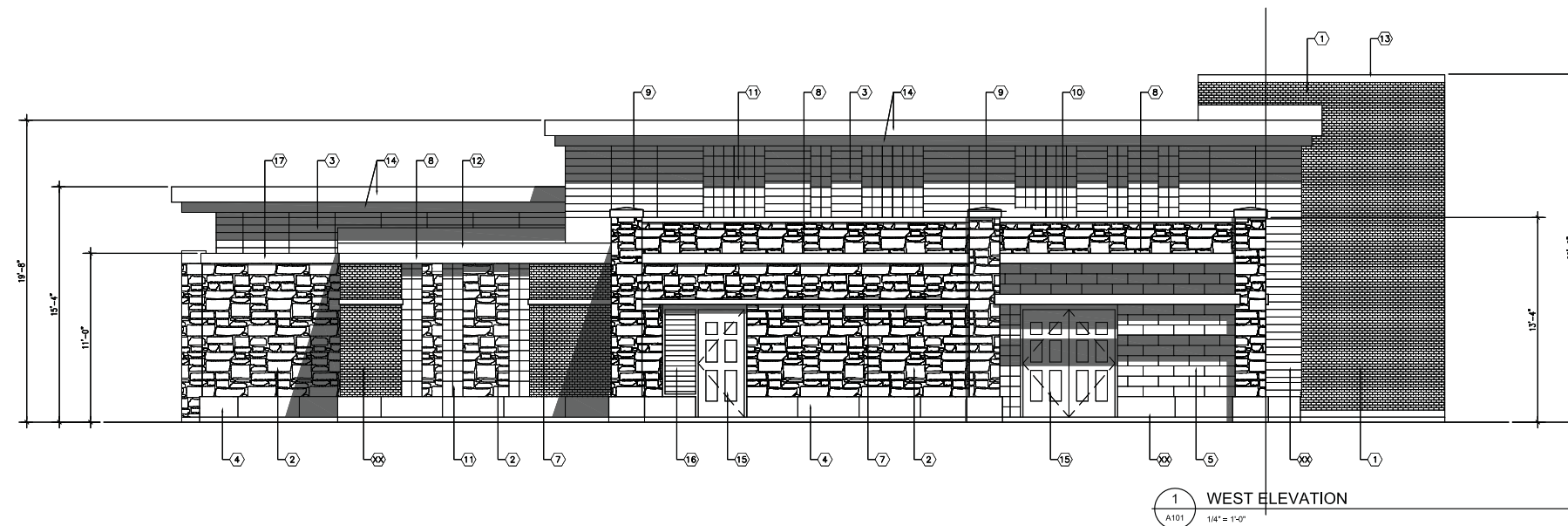
A101

Consultants:

Notes:



2 EAST ELEVATION
A101 1/4" = 1'-0"



1 WEST ELEVATION
A101 1/4" = 1'-0"

KEYNOTES

- | | | | |
|--|---|---|--|
| <p>1 BRICK VENEER:
MFR: SIOUX CITY BRICK
TYPE: MODULAR, RUNNING BOND
COLOR: TOASTED FINE ART SMOOTH</p> <p>2 STONE VENEER:
MFR: MICHELS STONE
TYPE: HAMILTON CREAM</p> <p>3 TERRA COTTA:
MFR: NEA CERA
TYPE: STACK BOND INSTALL
COLOR: UMBRA GRAY, NATURAL FINISH</p> <p>4 CAST STONE:
MFR: EDWARDS CAST STONE CO.
TYPE: WATER TABLE, 16"H x 48"L
COLOR: 18-025</p> <p>5 CAST STONE VENEER:
MFR: EDWARDS CAST STONE CO.
TYPE: 8"H x 24"L STONE
COLOR: 18-025</p> | <p>6 CAST STONE VENEER:
MFR: EDWARDS CAST STONE CO.
TYPE: 16"H x 48"L STONE
COLOR: 18-025</p> <p>7 CAST STONE:
MFR: EDWARDS CAST STONE CO.
TYPE: 4"H BAND
COLOR: 18-025</p> <p>8 CAST STONE:
MFR: EDWARDS CAST STONE CO.
TYPE: 8"H BAND
COLOR: 18-025</p> <p>9 CAST STONE CAP:
MFR: EDWARDS CAST STONE CO.
TYPE: 5"H x 26"SQ, E1102
COLOR: 18-025</p> <p>10 CAST STONE COPING:
MFR: EDWARDS CAST STONE CO.
TYPE: 4"H x 48"L
COLOR: 18-025</p> | <p>11 GLASS BLOCK:
MFR: PITTSBURGH CORNING
TYPE: 8" x 8" x 4"
STYLE: VUE</p> <p>12 METAL FASCIA:
MFR: PAC CLAD
FINISH: KYMAR 500
COLOR: SIERRA TAN</p> <p>13 METAL FASCIA:
MFR: PAC CLAD
FINISH: KYMAR 500
COLOR: CHARCOAL</p> <p>14 PRE FINISHED METAL ROOF EDGE:
MFR: KYMAR 500
COLOR: WEATHERED ZINC</p> <p>15 FIBERGLASS DOOR & FRAME:
MFR: SPECIAL LITE
STYLE: SL-185 COLONIAL, NO VISION LITES
FINISH: KYMAR 500
COLOR: AS SELECTED FROM FULL RANGE</p> | <p>16 METAL LOUVER:
- FACTORY FINISH COLOR TO MATCH:
MFR:
COLOR:
NUMBER:</p> <p>17 CAST STONE COPING:
MFR: EDWARDS CAST STONE CO.
TYPE: 8"H x 48"L
COLOR: 18-025</p> <p>18 CAST STONE CAP:
MFR: EDWARDS CAST STONE CO.
TYPE: 10"H x 20"SQ.
COLOR: 18-025</p> |
|--|---|---|--|

05/01/13	URBAN DESIGN INFORMATIONAL	
Date	Issuance/Revisions	Symbol

MADISON WELL #7

MADISON WATER UTILITY

MADISON, WISCONSIN

BUILDING ELEVATIONS

PL Project Number:
2012.28.00

Drawing No.

A102





VIEW FROM CORNER



VIEW FROM SHERMAN AVE.



SITE PLAN



AERIAL VIEW



NORTH BUILDING ELEVATION



WEST BUILDING ELEVATION



SCHLIMGEN NORTH STREET ELEVATION



SHERMAN WEST STREET ELEVATION

