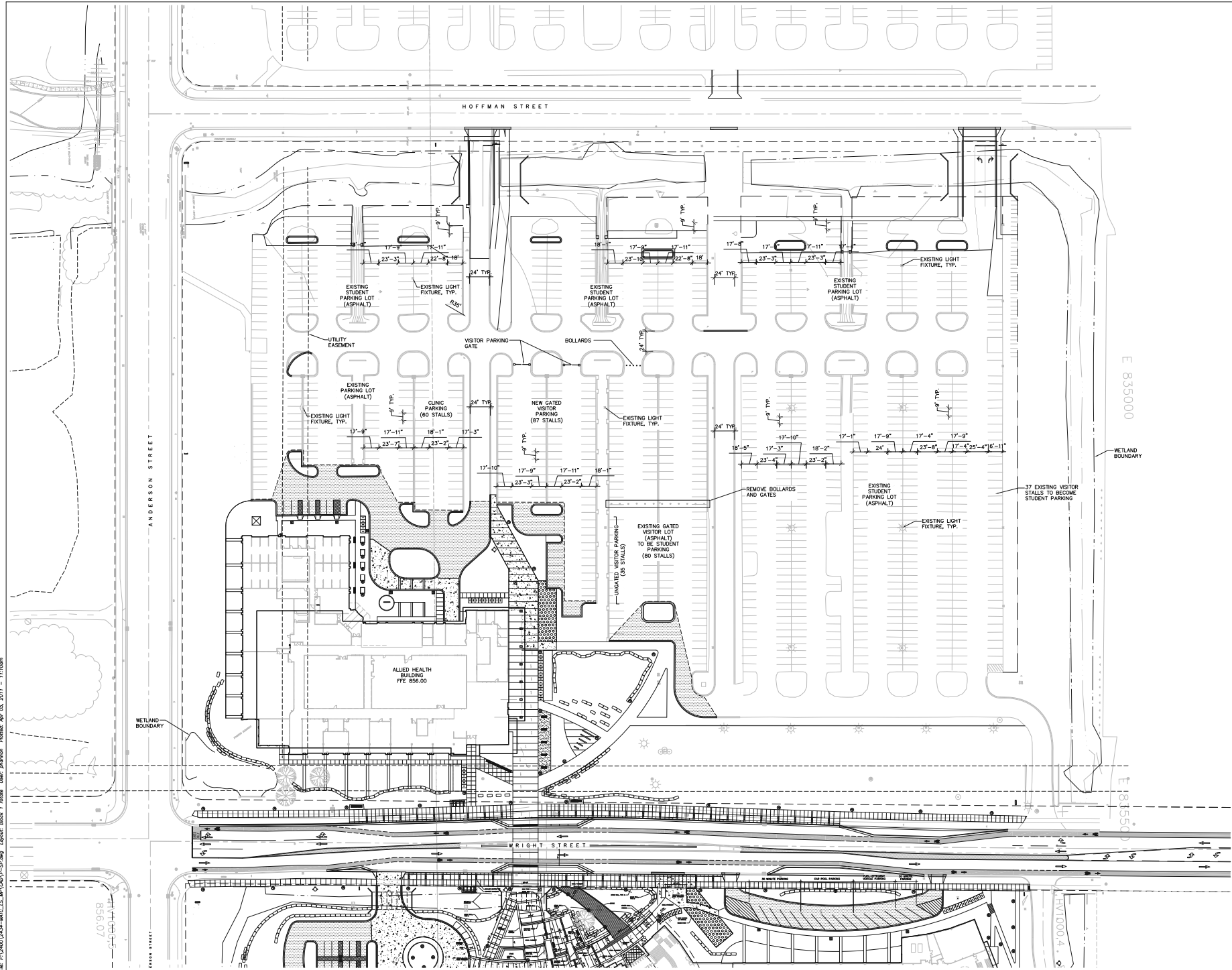
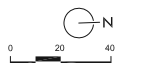
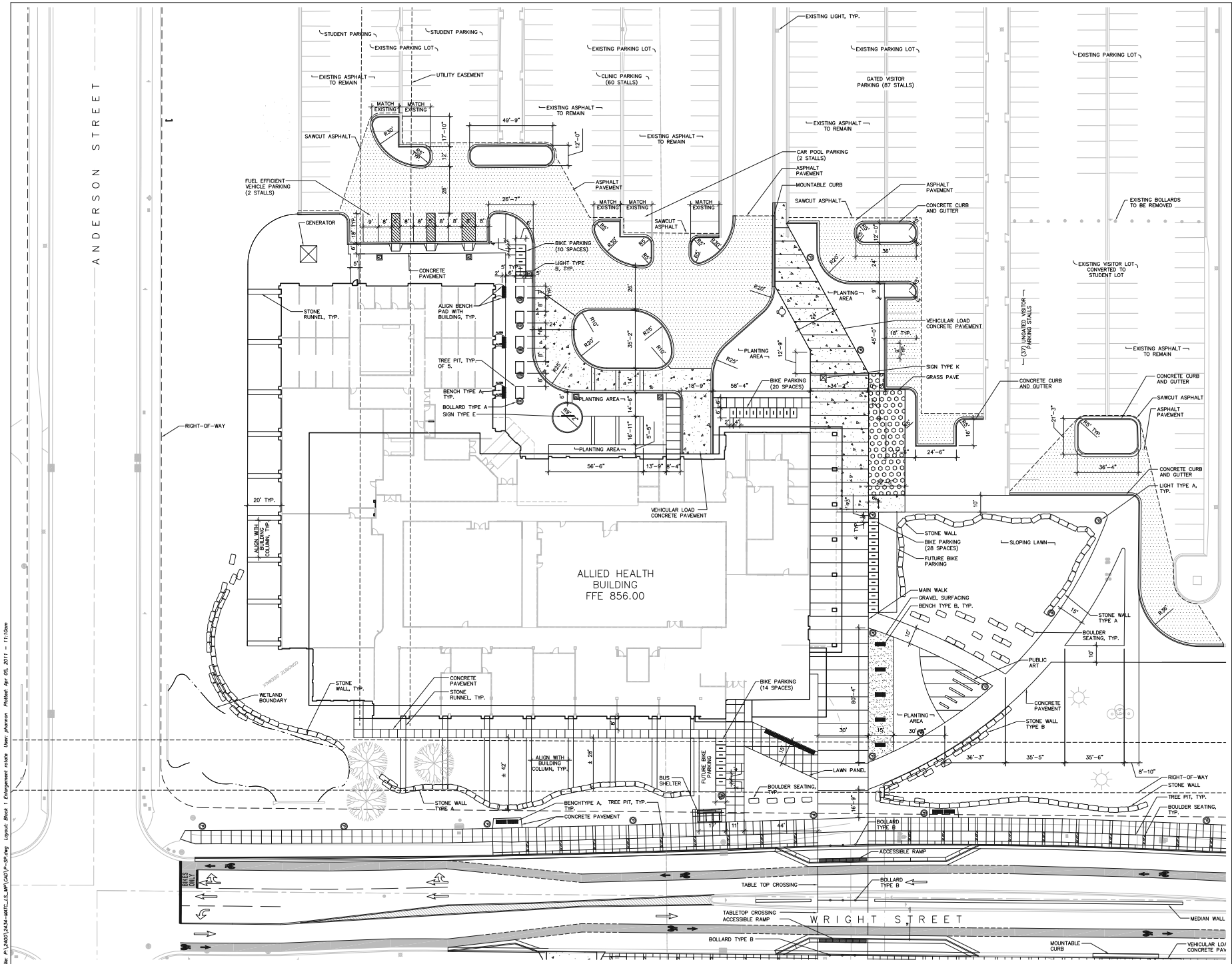


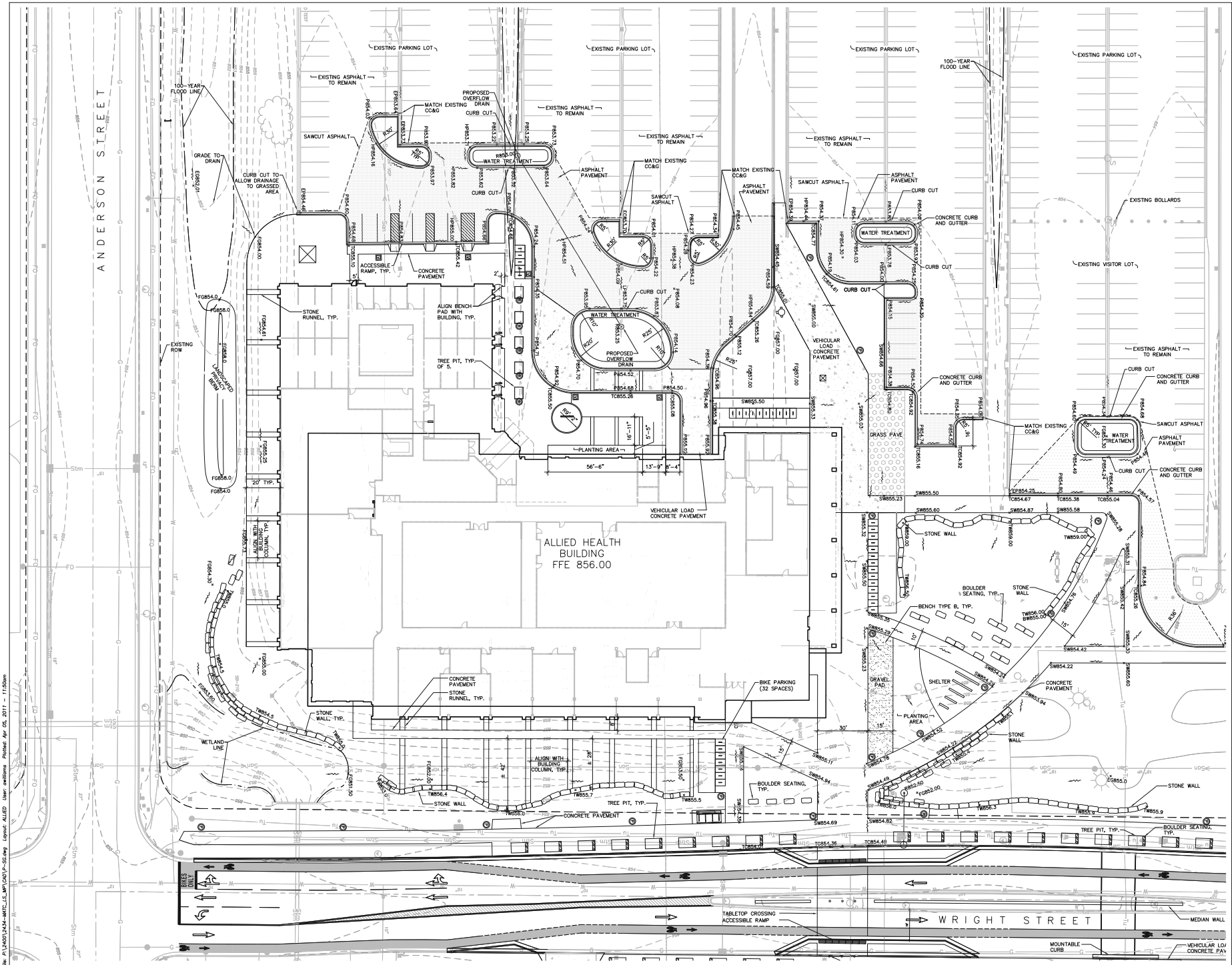
- NOTES:
- NO PARKING ALONG LENGTH OF FIRE LANE. SEE DETAIL FOR SIGNAGE INSTALLATION. APPROVED "FIRE LANE, NO PARKING" SIGNS PER IPC 503.3.3 SHALL BE PLACED AT A MAXIMUM OF 150' O.C. ON BOTH SIDES OF FIRE LANE ACCESS WAYS.
 - SEE DETAIL SHEETS FOR MOUNTABLE CURB DETAIL TO BE USED WITHIN FIRE LANE AREA.
 - AHB & SAC BUILDING WITHIN 500' OF REQUIRED FIRE HYDRANTS.
 - ALL HYDRANTS ARE MORE THAN 40' FROM BUILDINGS.
- | BUILDING | HYDRANT # (WITHIN 500') |
|----------|-------------------------|
| AHB | HYD. #1, #2, #3, #4 |
| SAC | HYD. #5, #6 |
| IC | HYD. #4, #5, #6 |
- FIRE LANE - 20'-0" WIDTH
 - FIRE APPARATUS LANE - 26'-0" WIDTH
 - GRASS PAVEMENT PRODUCT SUPPORT LOADING MIN. 85K LBS.
 - 1" THICK CONCRETE TO SUPPORT LOADING MIN. 85K LBS.
 - EXISTING TREES TO REMAIN, TYPICAL
 - FIRE LANE SIGN, TYP SIGN SYMBOL NTS

File: P:\13401\2434-MC-C-15-MP1\0417-Fire.dwg User: phannon Printed: Apr 05, 2011 11:18am





File: P:\13401\2434-MTC_15_MPL\CAD\PLANS\Site Layout.dwg User: jphanson Plotdate: Apr 05, 2011 11:10am



File: P:\3001\2434-MC-B11-025\DWG\10-SS.dwg User: sullivan P:\3001\2434-MC-B11-025.dwg Apr 05, 2011 - 11:05am

LANDSCAPE POINTS - MODIFIED EXISTING PARKING LOT

NUMBER OF TREES REQUIRED:		TABULATION OF POINTS PROVIDED:			
NUMBER OF PARKING STALLS	965	EXISTING CANPY TREES	0 pts	40	0
LOADING AREAS	1	CANOPY TREES	35 pts	39	1365
CANOPY TREES REQUIRED	40	EXISTING CANPY TREES	35 pts	25	875
		ORNAMENTAL TREES	15 pts	25	375
NUMBER OF LANDSCAPE POINTS REQUIRED:		TOTAL POINTS	2615 pts		
POINTS REQUIRED PER PARKING STALLS	2455				
POINTS REQUIRED PER LOADING AREA	75				
TOTAL POINTS REQUIRED	2530				



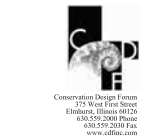
Project Title

Truax
AHB

City of Madison,
Wisconsin

Issued For: Approval
Issue Date: 04/06/2011
SAA Project No. 2434
MC Project No. -
Bid Pkg No. B11-025

Revision Date



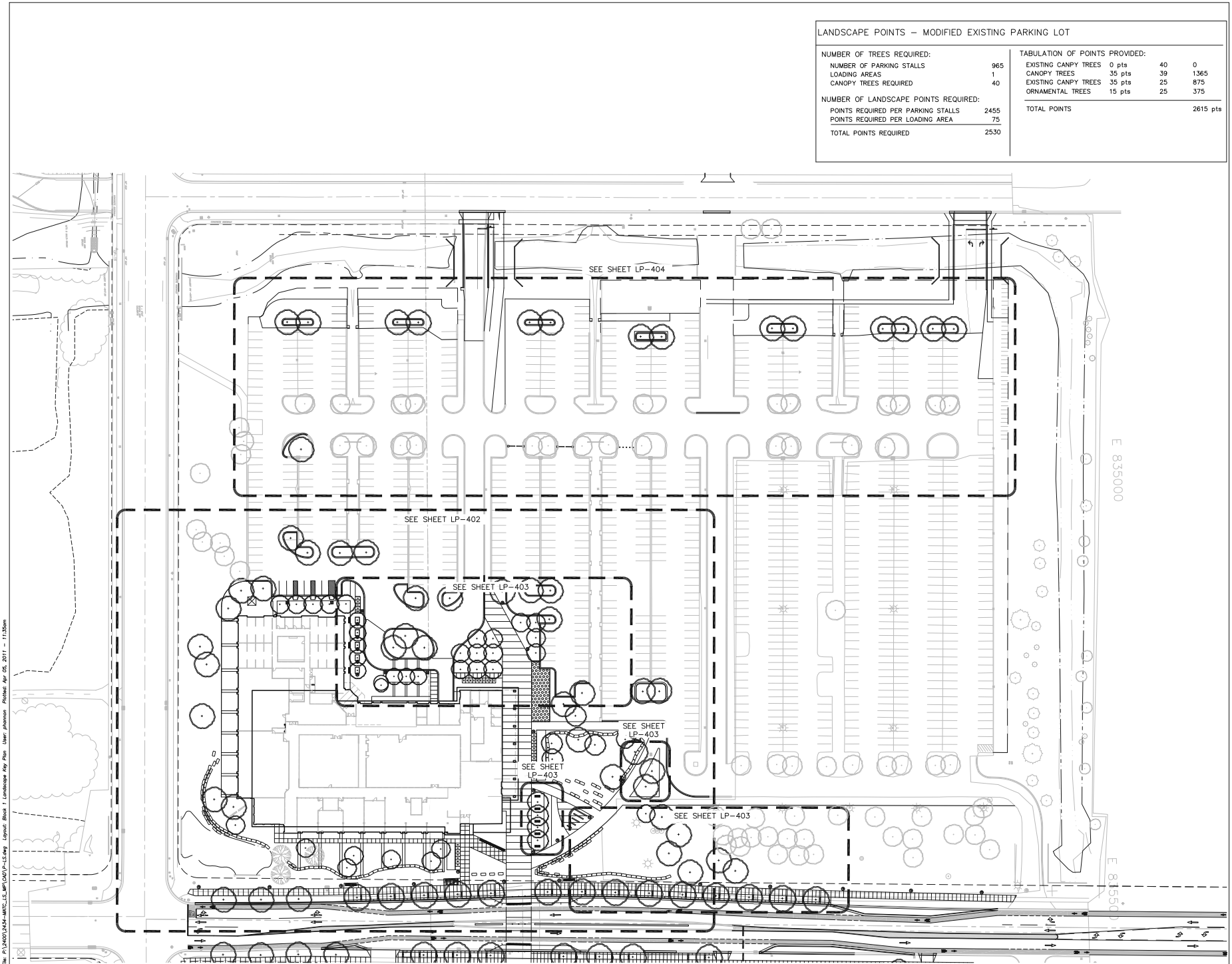
DRAWING

LANDSCAPE KEY PLAN



Sheet Number

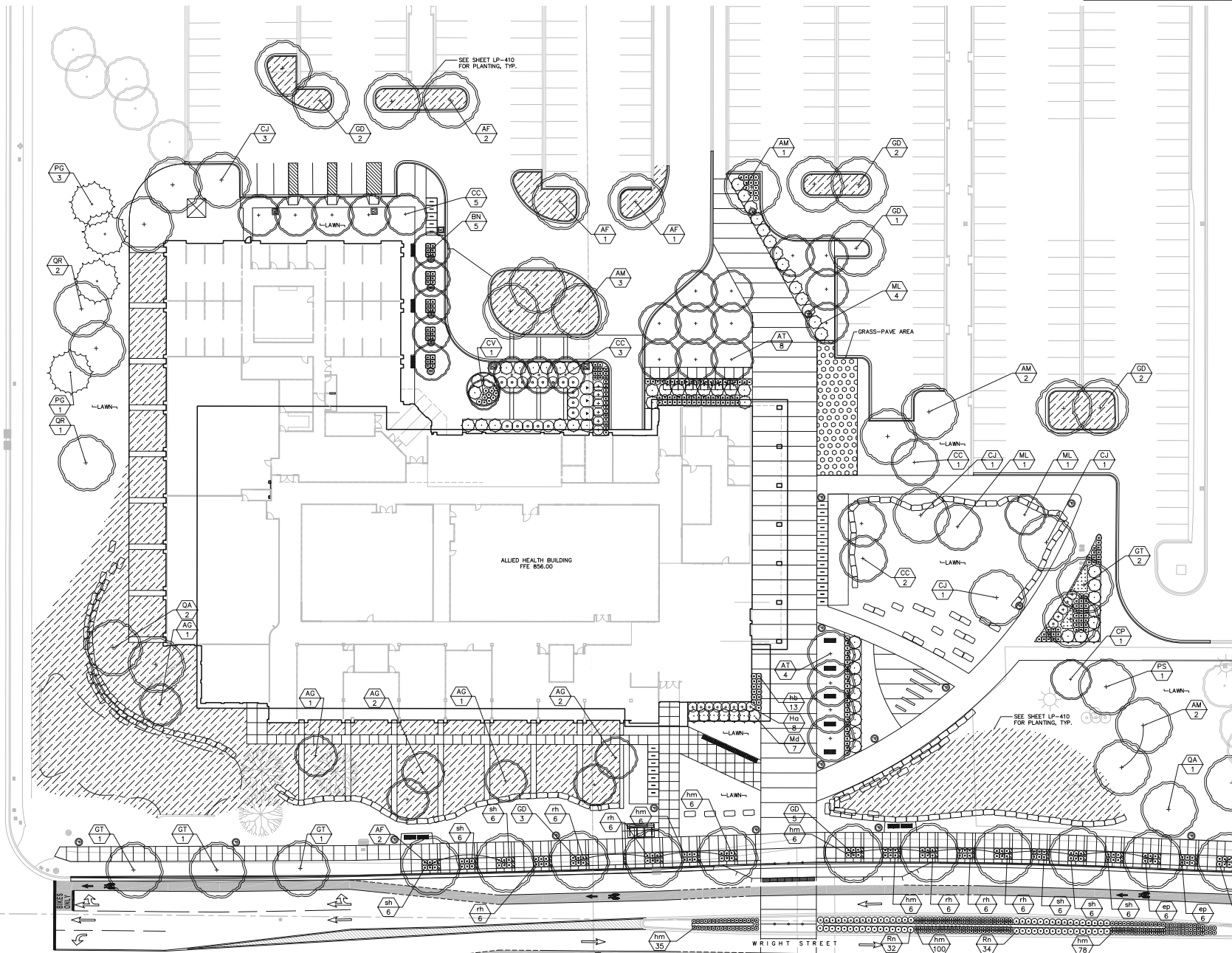
LP-401



File: P:\3001\2434-MC-C_SAA\3001\2434-Landsc Key Plan User: jphanson Printed: Apr 05, 2011 11:50am

File: P:\13401\2424-MITC_LC_LP-402\13-Landscaping Layout - Block 1 - Engagement A User: phanphan Plotfile: Apr 05, 2011 - 11:25am

ANDERSON STREET



LEGEND:

ADDITIONAL PLANTING; SEE SHEET LP-410

GRASS-PAVE AREA



Project Title

Truax
AHB

City of Madison,
Wisconsin

Issued For: Approval
 Issue Date: 04/06/2011
 SAA Project No. 2434
 MC Project No. -
 Bid Pkg No. B11-025

Revision	Date

SAA DESIGN GROUP

SAA Design Group, Inc.
 717 John Nokes Drive
 Healdsburg, WI 53121
 Ph. 608.233.9950
 Fax. 608.233.7750
 www.saa-madison.com

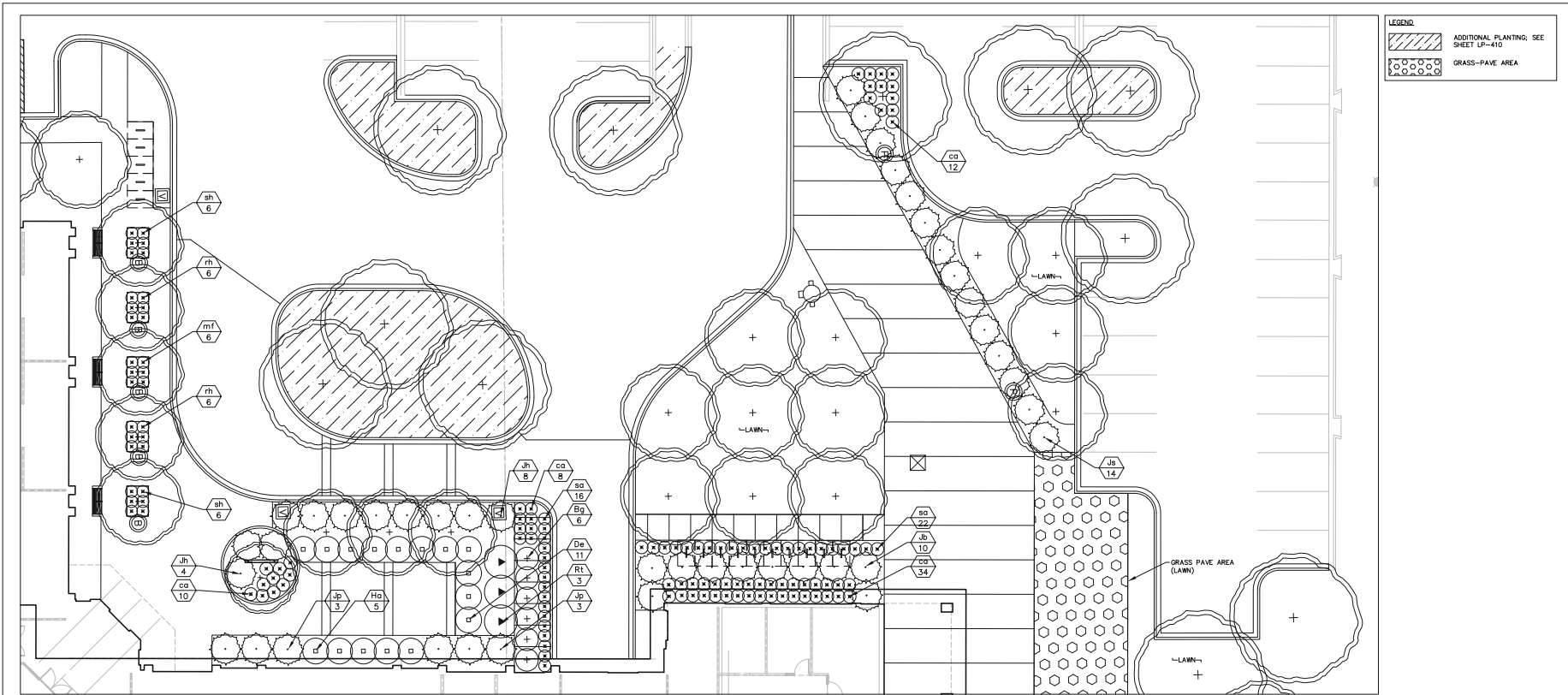
Consultation Design Group
 315 West First Street
 Eau Claire, WI 54601
 608.795.2000 Home
 608.550.3030 Fax
 www.sdginc.com

DRAWING
 LANDSCAPE PLAN
 ENLARGEMENT

Sheet Number

LP-402

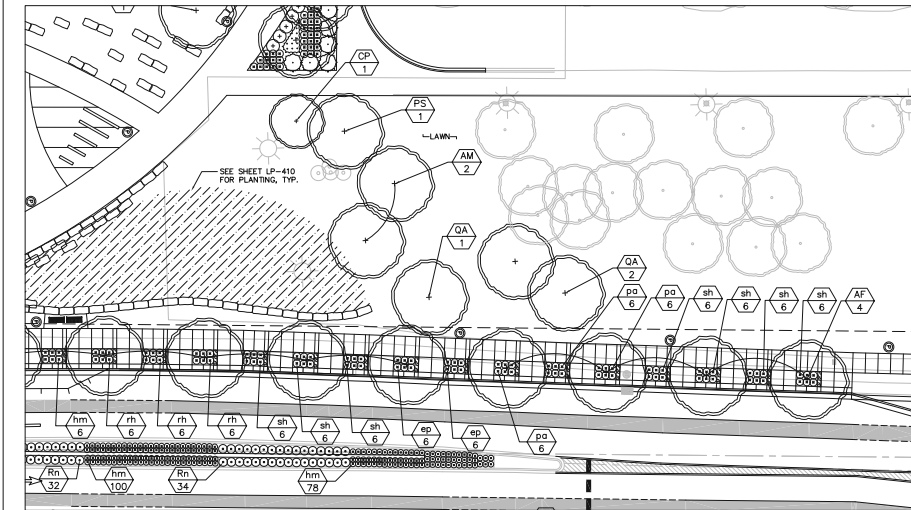
File: P:\3401\2424-MITC-LS-MP\040\LP-403.dwg Layout: Block 1 Engraving: B User: phanson PlotDate: Apr 05, 2011 -- 11:56am



1 AHB LANDSCAPE PLAN ENLARGEMENT

LP-403

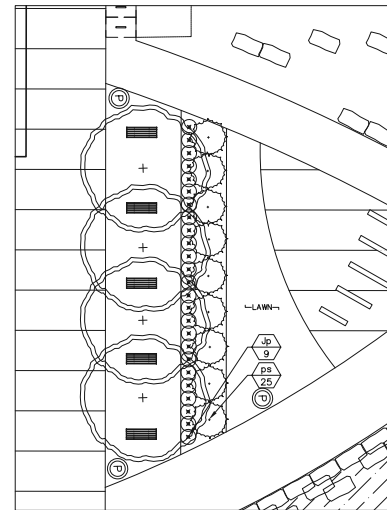
SCALE: 1"=10'-0"



2 AHB LANDSCAPE PLAN ENLARGEMENT

LP-403

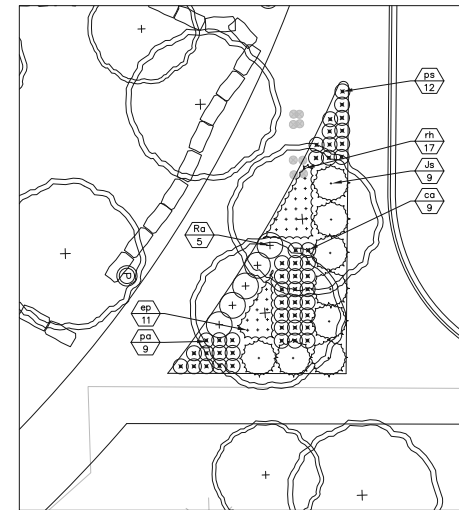
SCALE: 1"=20'-0"



3 AHB LANDSCAPE PLAN ENLARGEMENT

LP-403

SCALE: 1"=10'-0"



4 AHB LANDSCAPE PLAN ENLARGEMENT

LP-403

SCALE: 1"=10'-0"

LEGEND
 ADDITIONAL PLANTING; SEE SHEET LP-410
 GRASS-PAVE AREA



Project Title

Truax
AHB

City of Madison,
Wisconsin

Issued For: Approval
 Issue Date: 04/06/2011
 SAA Project No. 2434
 MC Project No. -
 Bid Pkg No. B11-025

Revision	Date



SAA Design Group, Inc.
 717 John Nields Drive
 Healdsburg, WI 53213
 Ph. 608-233-9970
 Fax. 608-235-7750
 www.saa-wi.com



Consultation Design Forum
 315 West First Street
 Eau Claire, WI 54601
 608-795-3948 Phone
 608-559-3038 Fax
 www.sdfinc.com

DRAWING

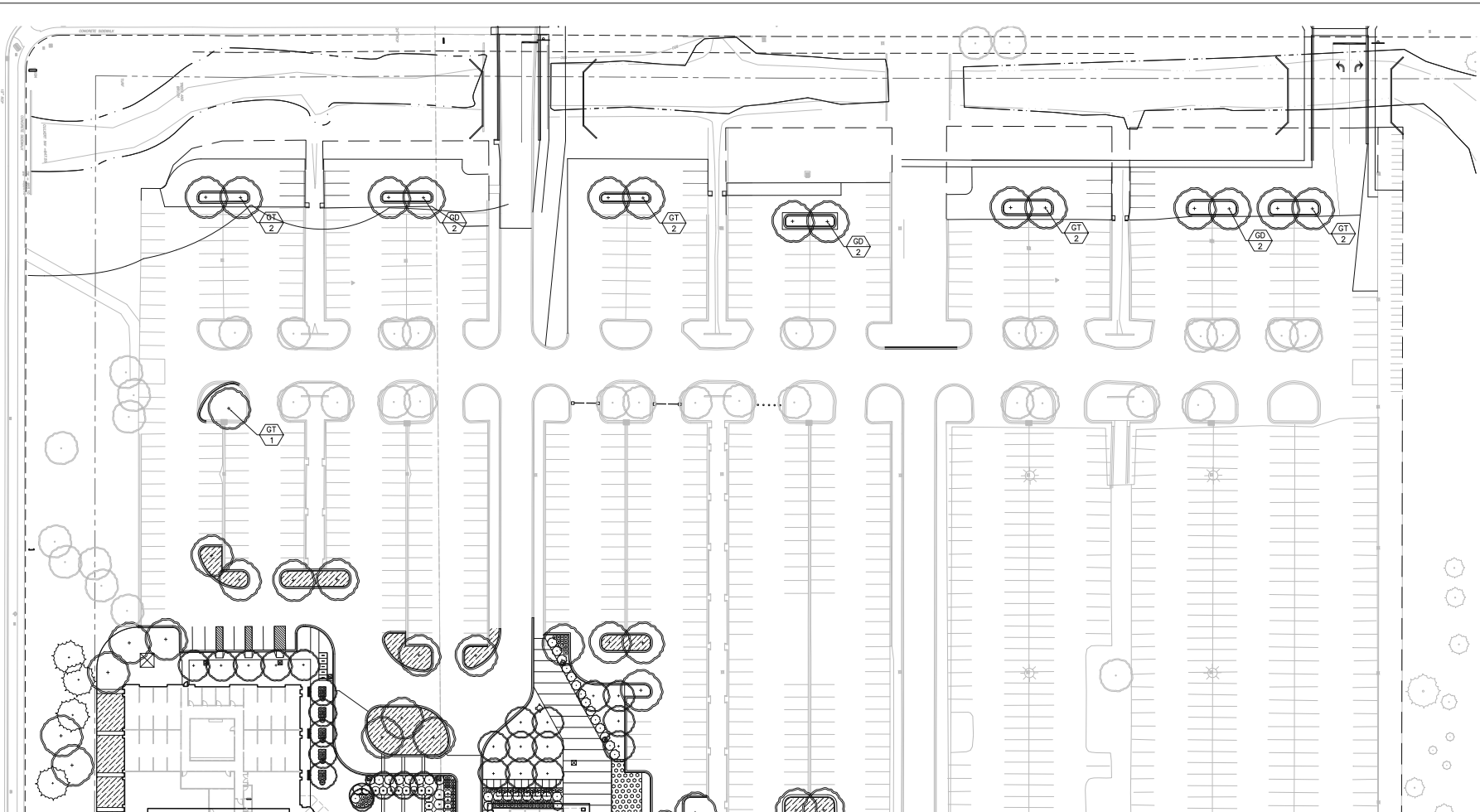
LANDSCAPE PLAN
ENLARGEMENT



Sheet Number

LP-403

File: P:\3401\2424-MTC-LS-MP\2401-LS-MP-LS.dwg Layout: Block 1 Engagement C User: phanson PlotDate: Apr 05, 2011 11:46am



LEGEND

	ADDITIONAL PLANTING; SEE SHEET LP-410
	GRASS-PAVE AREA



Project Title

Truax
AHB

City of Madison,
Wisconsin

Issued For: Approval
 Issue Date: 04/06/2011
 SAA Project No. 2434
 MC Project No. -
 Bid Pkg No. B11-025

Revision	Date

SAA DESIGN GROUP
 SAA Design Group, Inc.
 717 John Nokes Drive
 Mechanicsville, VA 23103
 Ph. 608-233-0900
 Fax. 608-233-7750
 www.saa-mc.com

CF
 Conversation Design Forum
 315 West First Street
 Eau Claire, WI 54601
 608-795-2988 Phone
 608-559-3038 Fax
 www.cdfinc.com

DRAWING
 LANDSCAPE PLAN
 ENLARGEMENT



Sheet Number

LP-404

LANDSCAPE PLANT LEGEND

Symbol	Botanical name	Common Name	Size	Root	Quantity	Comments
SHADE TREES						
AF	Acer x freemanii 'Morgan'	Morgan Freeman Maple	2.5" Cal.	B&B	--	
AM	Acer miyabei 'Morton'	State Street Maple	2.5" Cal.	B&B	--	
BN	Betula nigra 'Heritage'	Heritage River Birch	2.5" Cal.	B&B	--	
CJ	Cercidiphyllum japonicum	Katsura Tree	2.5" Cal.	B&B	--	
GD	Gymnocladus dioica	Kentucky Coffeetree	2.5" Cal.	B&B	--	
GT	Gleditsia triacanthos 'Skymaster'	Skymaster Honeylocust	2.5" Cal.	B&B	--	
TD	Taxodium distichum	Bald Cypress	2.5" Cal.	B&B	--	
OV	Ostrya virginiana	Hop Hornbeam	2.5" Cal.	B&B	--	
PS	Prunus serotina	Black Cherry	2.5" Cal.	B&B	--	
QA	Quercus alba	Swamp White Oak	2.5" Cal.	B&B	--	
QR	Quercus rubra	Red Oak	2.5" Cal.	B&B	--	

ORNAMENTAL TREES						
AG	Amelanchier x grandifolia 'Autumn Brilliance'	Autumn Brilliance Serviceberry	1.5" Cal.	B&B	--	
AT	Acer truncatum	Purpleleaf Maple	1.5" Cal.	B&B	--	
CA	Cornus alternifolia	Pagoda Dogwood	1.5" Cal.	B&B	--	
CC	Cercis canadensis	Redbud	1.5" Cal.	B&B	--	
CP	Crataegus phaenopyrum	Washington Hawthorne	1.5" Cal.	B&B	--	
CV	Chionanthus virginicus	White Fringe Tree	1.5" Cal.	B&B	--	
HV	Hamamelis virginiana	Common Witch Hazel	1.5" Cal.	B&B	--	
ML	Magnolia x loebneri	Loebner Magnolia	1.5" Cal.	B&B	--	

EVERGREEN TREES						
PA	Picea abies	Norway Spruce	8' Ht.	B&B	--	
PG	Picea glauca var. densata	Black Hills Spruce	8' Ht.	B&B	--	

SHRUB TYPE A (> 8' ht.)						
Om	Cornus mas 'Golden Glory'	Golden Glory Corneliancherry Dogwood	3'-5' Ht.	B&B	--	
Cr	Cornus racemosa	Gray Dogwood	3'-5' Ht.	B&B	--	
Cs	Cornus sericea	Redosier Dogwood	3'-5' Ht.	B&B	--	
RT	Rhus typhina 'Laciniata'	Cutleaf Staghorn Sumac	3'-5' Ht.	B&B	--	

SHRUB TYPE B (4'-8' ht.)						
Ca	Clethra alnifolia 'Hummingbird'	Hummingbird Clethra	5 Gal.	CG	--	
Cl	Cotoneaster lucidus	Hedge Cotoneaster	5 Gal.	CG	--	
Cf	Calycanthus floridus	Carolina Allspice	5 Gal.	CG	--	
Hp	Hydrangea paniculata 'Limelight'	Panicle Hydrangea	5 Gal.	CG	--	
Rr	Rosa 'Radsunny'	The Sunny Knock Out Rose	5 Gal.	CG	--	
Sp	Salix purpurea 'Nana'	Dwarf Arctic Blue Willow	5 Gal.	CG	--	
Vd	Viburnum dentatum 'Autumn Jazz'	Autumn Jazz Arrowwood Viburnum	5 Gal.	CG	--	

Symbol	Botanical name	Common Name	Size	Root	Quantity	Comments
SHRUB TYPE C (< 4' ht.)						
Bg	Buxus 'Green Velvet'	Green Velvet Boxwood	3 Gal.	CG	--	
Ce	Ceanothus americanus	New Jersey Tea	3 Gal.	CG	--	
De	Deutzia gracilis	Slender Deutzia	3 Gal.	CG	--	
Di	Dierilla lonicera	Dwarf Bush Honeysuckle	3 Gal.	CG	--	
Fg	Fothergilla gardenii 'Mt. Airy'	Mt. Airy Dwarf Fothergilla	3 Gal.	CG	--	
Ha	Hydrangea arborescens 'Annabelle'	Annabelle Hydrangea	3 Gal.	CG	--	
Ra	Rhus aromatica 'Gro-Low'	Gro-Low Fragrant Sumac	3 Gal.	CG	--	
Rn	Rosa 'Nearly Wild'	Nearly Wild Shrub Rose	3 Gal.	CG	--	
Vo	Viburnum opulus 'Nanum'	European Cranberrybush	3 Gal.	CG	--	

SHRUB TYPE D (Evergreen; 5'-8' Ht.)						
Tr	Thuja occidentalis 'Robusta'	Ware or Robusta Juniper	3 Gal.	CG	--	

SHRUB TYPE D (Evergreen; 2'-5' Ht.)						
Jb	Juniperus squamata 'Blue Star'	Blue Star Juniper	3 Gal.	CG	--	
Jh	Juniperus horizontalis 'Bar Harbor'	Bar Harbor Creeping Juniper	3 Gal.	CG	--	
Jp	Juniperus 'Pfitzeriana Compacta'	Compact Pfitzer Juniper	3 Gal.	CG	--	
Js	Juniperus chinensis 'Sea Green'	Sea Green Juniper	3 Gal.	CG	--	
Md	Microbiota decussata	Siberian Cypress	3 Gal.	CG	--	
Tm	Taxus x media 'tauntonii'	Taunton Yew	3 Gal.	CG	--	

PERENNIALS/GRASSES/GROUNDCOVERS						
aa	Astilbe x arendsii 'White Gloria'	White Gloria Astilbe	1 Gal.	CG	--	
ac	Aquilegia canadensis	American Columbine	1 Gal.	CG	--	
ad	Aster divaricatus	White Wood Aster	1 Gal.	CG	--	
ag	Allium 'Globemaster'	Globemaster Onion	1 Gal.	CG	--	
am	Alchemilla ssp.	Lady's Mantle	1 Gal.	CG	--	
ar	Ajuga reptans	Bugleweed	1 Gal.	CG	--	
ca	Calamagrostis acutiflora 'Kari Foerster'	Kari Foerster Feather Reed Grass	1 Gal.	CG	--	
cl	Chasmanthium latifolia	Northern Sea Oats	1 Gal.	CG	--	
cp	Carex pennsylvanica	Pennsylvania Sedge	1 Gal.	CG	--	
cs	Careopsis grandiflora 'Sunray'	Sunray Tickseed	1 Gal.	CG	--	
ep	Echinacea purpurea	Purple Coneflower	1 Gal.	CG	--	
hb	Hosta 'Blue Angel'	Blue Angel Hosta	1 Gal.	CG	--	
ho	Hosta 'Royal Standard'	Royal Standard Hosta	1 Gal.	CG	--	
hh	Hemerocallis 'Happy Returns'	Happy Returns Daylily	1 Gal.	CG	--	
lg	Lavandula x intermedia 'Grosso'	Grosso Lavender	1 Gal.	CG	--	
hs	Helictotrichon sempervirens	Blue Oat Grass	1 Gal.	CG	--	
hm	Hemerocallis 'Mini Stella'	Mini Stella Daylily	1 Gal.	CG	--	
is	Iris siberica 'Caesar's Brother'	Caesar's Brother Siberian Iris	1 Gal.	CG	--	
mf	Monarda 'Petite Delight'	Petite Delight Beebalm	1 Gal.	CG	--	
nf	Nepeta x fassenii 'Six Hills Giant'	Six Hills Giant Catmint	1 Gal.	CG	--	
pl	Phlox subulata	Creeping Phlox	1 Gal.	CG	--	
ps	Panicum virgatum 'Shenandoah'	Shenandoah Switch Grass	1 Gal.	CG	--	
pa	Pervoskia atriplicifolia 'Langin'	Langin Russian Sage	1 Gal.	CG	--	
pq	Parthenocissus quinquefolia 'Star Showers'	Star Showers Virginia Creeper	1 Gal.	CG	--	
rh	Rudbeckia fulgida var. Sullivantii	Goldstrum Black Eyed Susan	1 Gal.	CG	--	
sh	Sporobolus heterolepis	Prairie Dropseed	1 Gal.	CG	--	
sa	Sedum 'Autumn Joy'	Autumn Joy Sedum	1 Gal.	CG	--	
sb	Sedum spectabile 'Brilliant'	Brilliant Sedum	1 Gal.	CG	--	
sc	Sedum cauticula 'Sunset Cloud'	Sunset Cloud Sedum	1 Gal.	CG	--	
sd	Sedum divergens	Cascade Stonecrop	1 Gal.	CG	--	
sg	Sedum grisebachii	Stonecrop	1 Gal.	CG	--	
sl	Sedum hybridum 'Immergrunchen'	Immergrunchen Stonecrop	1 Gal.	CG	--	
sn	Salvia nemerosa 'May Night'	May Night Salvia	1 Gal.	CG	--	



Project Title

Truax
AHB

City of Madison,
Wisconsin

Issued For: Approval
Issue Date: 04/06/2011
SAA Project No. 2434
MC Project No. -
Bid Pkg No. B11-025

Revision Date



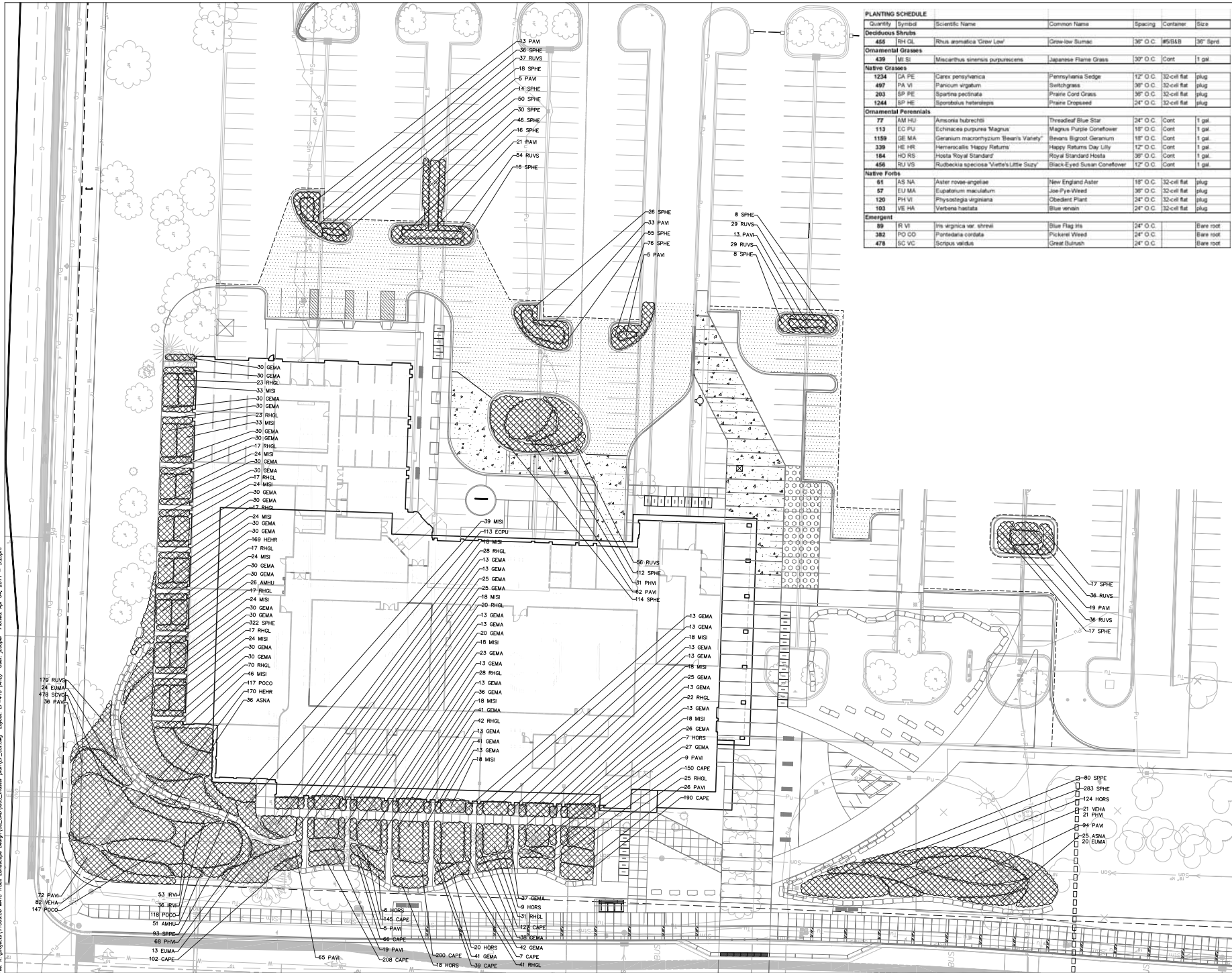
DRAWING

LANDSCAPE
PLANT SCHEDULE

Sheet Number

LP-405

File: P:\31001\2434-MC-LC-MP\CAD\PLANT\LEGEND.dwg User: phillips Date: 04/06/2011 11:47:00



Project Title

Truax
AHB

City of Madison,
Wisconsin

Issued For: Approval

Issue Date: 04/06/2011

SAA Project No. 2434

MC Project No. -

Bid Pkg No. B11-025

Revision _____ Date _____



SAA Design Group, Inc.
717 John Nolen Drive
Madison, WI 53713
608.559.2000
608.255.7750
www.saa-madison.com



Landscape Architect
Conservation Design Forum
115 New River Street
Evanston, Illinois 60120
630.550.2000 Phone
630.559.2039 Fax
www.cdfinc.com

DRAWING

SITE LAYOUT PLAN



Sheet Number

LP-410

File: P:\projects\11009.00 MTC Truax Landscape Design\08_CAD\04_Landscape\04_LP-410.dwg User: jrooper Plotter: Atr 24, 2011 = 8:23pm

LANDSCAPE PLANT LEGEND

Symbol	Botanical name	Common Name	Size	Root	Quantity	Comments
SHADE TREES						
AF	Acer x freemanii 'Morgan'	Morgan Freeman Maple	2.5" Cal.	B&B	--	
AM	Acer miyabei 'Morton'	State Street Maple	2.5" Cal.	B&B	--	
BN	Betula nigra 'Heritage'	Heritage River Birch	2.5" Cal.	B&B	--	
CJ	Cercidiphyllum japonicum	Katsura Tree	2.5" Cal.	B&B	--	
GD	Gymnocladus dioica	Kentucky Coffeetree	2.5" Cal.	B&B	--	
GT	Gleditsia triacanthos 'Skymaster'	Skymaster Honeylocust	2.5" Cal.	B&B	--	
TD	Taxodium distichum	Bald Cypress	2.5" Cal.	B&B	--	
OV	Ostrya virginiana	Hop Hornbeam	2.5" Cal.	B&B	--	
PS	Prunus serotina	Black Cherry	2.5" Cal.	B&B	--	
QA	Quercus alba	Swamp White Oak	2.5" Cal.	B&B	--	
QR	Quercus rubra	Red Oak	2.5" Cal.	B&B	--	

ORNAMENTAL TREES						
AG	Amelanchier x grandifolia 'Autumn Brilliance'	Autumn Brilliance Serviceberry	1.5" Cal.	B&B	--	
AT	Acer truncatum	Purpleleaf Maple	1.5" Cal.	B&B	--	
CA	Cornus alternifolia	Pagoda Dogwood	1.5" Cal.	B&B	--	
CC	Cercis canadensis	Redbud	1.5" Cal.	B&B	--	
CP	Crataegus phaenopyrum	Washington Hawthorne	1.5" Cal.	B&B	--	
CV	Chionanthus virginicus	White Fringe Tree	1.5" Cal.	B&B	--	
HV	Hamamelis virginiana	Common Witch Hazel	1.5" Cal.	B&B	--	
ML	Magnolia x loebneri	Loebner Magnolia	1.5" Cal.	B&B	--	

EVERGREEN TREES						
PA	Picea abies	Norway Spruce	8' Ht.	B&B	--	
PG	Picea glauca var. densata	Black Hills Spruce	8' Ht.	B&B	--	

SHRUB TYPE A (> 8' ht.)						
Om	Cornus mas 'Golden Glory'	Golden Glory Corneliancherry Dogwood	3'-5' Ht.	B&B	--	
Cr	Cornus racemosa	Gray Dogwood	3'-5' Ht.	B&B	--	
Cs	Cornus sericea	Redosier Dogwood	3'-5' Ht.	B&B	--	
RT	Rhus typhina 'Laciniata'	Cutleaf Staghorn Sumac	3'-5' Ht.	B&B	--	

SHRUB TYPE B (4'-8' ht.)						
Ca	Clethra alnifolia 'Hummingbird'	Hummingbird Clethra	5 Gal.	CG	--	
Cl	Cotoneaster lucidus	Hedge Cotoneaster	5 Gal.	CG	--	
Cf	Calycanthus floridus	Carolina Allspice	5 Gal.	CG	--	
Hp	Hydrangea paniculata 'Limelight'	Panicle Hydrangea	5 Gal.	CG	--	
Rr	Rosa 'Radsunny'	The Sunny Knock Out Rose	5 Gal.	CG	--	
Sp	Salix purpurea 'Nana'	Dwarf Arctic Blue Willow	5 Gal.	CG	--	
Vd	Viburnum dentatum 'Autumn Jazz'	Autumn Jazz Arrowwood Viburnum	5 Gal.	CG	--	

Symbol	Botanical name	Common Name	Size	Root	Quantity	Comments
SHRUB TYPE C (< 4' ht.)						
Bg	Buxux 'Green Velvet'	Green Velvet Boxwood	3 Gal.	CG	--	
Ce	Ceanothus americanus	New Jersey Tea	3 Gal.	CG	--	
De	Deutzia gracilis	Slender Deutzia	3 Gal.	CG	--	
Di	Dierilla lonicera	Dwarf Bush Honeysuckle	3 Gal.	CG	--	
Fg	Fothergilla gardenii 'Mt. Airy'	Mt. Airy Dwarf Fothergilla	3 Gal.	CG	--	
Ha	Hydrangea arborescens 'Annabelle'	Annabelle Hydrangea	3 Gal.	CG	--	
Ra	Rhus aromatica 'Gro-Low'	Gro-Low Fragrant Sumac	3 Gal.	CG	--	
Rn	Rosa 'Nearly Wild'	Nearly Wild Shrub Rose	3 Gal.	CG	--	
Vo	Viburnum opulus 'Nanum'	European Cranberrybush	3 Gal.	CG	--	

SHRUB TYPE D (Evergreen; 5'-8' Ht.)						
Tr	Thuja occidentalis 'Robusta'	Ware or Robusta Juniper	3 Gal.	CG	--	

SHRUB TYPE D (Evergreen; 2'-5' Ht.)						
Jb	Juniperus squamata 'Blue Star'	Blue Star Juniper	3 Gal.	CG	--	
Jh	Juniperus horizontalis 'Bar Harbor'	Bar Harbor Creeping Juniper	3 Gal.	CG	--	
Jp	Juniperus 'Pfitzeriana Compacta'	Compact Pfitzer Juniper	3 Gal.	CG	--	
Js	Juniperus chinensis 'Sea Green'	Sea Green Juniper	3 Gal.	CG	--	
Md	Microbiota decussata	Siberian Cypress	3 Gal.	CG	--	
Tm	Taxus x media 'Tauntonii'	Taunton Yew	3 Gal.	CG	--	

PERENNIALS/GRASSES/GROUNDCOVERS						
aa	Astilbe x arendsii 'White Gloria'	White Gloria Astilbe	1 Gal.	CG	--	
ac	Aquilegia canadensis	American Columbine	1 Gal.	CG	--	
ad	Aster divaricatus	White Wood Aster	1 Gal.	CG	--	
ag	Allium 'GlobeMASTER'	GlobeMASTER Onion	1 Gal.	CG	--	
am	Alchemilla ssp.	Lady's Mantle	1 Gal.	CG	--	
ar	Ajuga reptans	Bugleweed	1 Gal.	CG	--	
ca	Calamagrostis acutiflora 'Kari Foerster'	Kari Foerster Feather Reed Grass	1 Gal.	CG	--	
cl	Chasmanthium latifolia	Northern Sea Oats	1 Gal.	CG	--	
cp	Carex pennsylvanica	Pennsylvania Sedge	1 Gal.	CG	--	
cs	Careopsis grandiflora 'Sunray'	Sunray Tickseed	1 Gal.	CG	--	
ep	Echinacea purpurea	Purple Coneflower	1 Gal.	CG	--	
hb	Hosta 'Blue Angel'	Blue Angel Hosta	1 Gal.	CG	--	
ho	Hosta 'Royal Standard'	Royal Standard Hosta	1 Gal.	CG	--	
hh	Hemerocallis 'Happy Returns'	Happy Returns Daylily	1 Gal.	CG	--	
lg	Lavandula x intermedia 'Grosso'	Grosso Lavender	1 Gal.	CG	--	
hs	Helictotrichon sempervirens	Blue Oat Grass	1 Gal.	CG	--	
hm	Hemerocallis 'Mini Stella'	Mini Stella Daylily	1 Gal.	CG	--	
is	Iris siberica 'Caesar's Brother'	Caesar's Brother Siberian Iris	1 Gal.	CG	--	
mf	Monarda 'Petite Delight'	Petite Delight Beebalm	1 Gal.	CG	--	
nf	Nepeta x fassenii 'Six Hills Giant'	Six Hills Giant Catmint	1 Gal.	CG	--	
pl	Phlox subulata	Creeping Phlox	1 Gal.	CG	--	
ps	Panicum virgatum 'Shenandoah'	Shenandoah Switch Grass	1 Gal.	CG	--	
pa	Pervoskia atriplicifolia 'Langin'	Langin Russian Sage	1 Gal.	CG	--	
pq	Parthenocissus quinquefolia 'Star Showers'	Star Showers Virginia Creeper	1 Gal.	CG	--	
rh	Rudbeckia fulgida var. Sullivantii	Goldstrum Black Eyed Susan	1 Gal.	CG	--	
sh	Sporobolus heterolepis	Prairie Dropseed	1 Gal.	CG	--	
sa	Sedum 'Autumn Joy'	Autumn Joy Sedum	1 Gal.	CG	--	
sb	Sedum spectabile 'Brilliant'	Brilliant Sedum	1 Gal.	CG	--	
sc	Sedum cauticula 'Sunset Cloud'	Sunset Cloud Sedum	1 Gal.	CG	--	
sd	Sedum divergens	Cascade Stonecrop	1 Gal.	CG	--	
sg	Sedum grisbachii	Stonecrop	1 Gal.	CG	--	
sl	Sedum hybridum 'Immergrunchen'	Immergrunchen Stonecrop	1 Gal.	CG	--	
sn	Salvia nemerosa 'May Night'	May Night Salvia	1 Gal.	CG	--	



Project Title

Truax
AHB

City of Madison,
Wisconsin

Issued For: Approval
Issue Date: 04/06/2011
SAA Project No. 2434
MC Project No. -
Bid Pkg No. B11-025

Revision Date



SAA Design Group, Inc.
717 John Nokes Drive
Hickory, NC 27615
Ph: 608-233-0900
Fax: 608-233-7750
www.saa-design.com



DRAWING

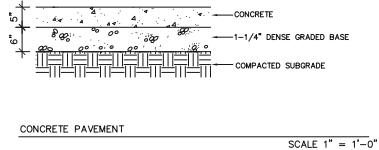
LANDSCAPE
PLANT SCHEDULE

Sheet Number

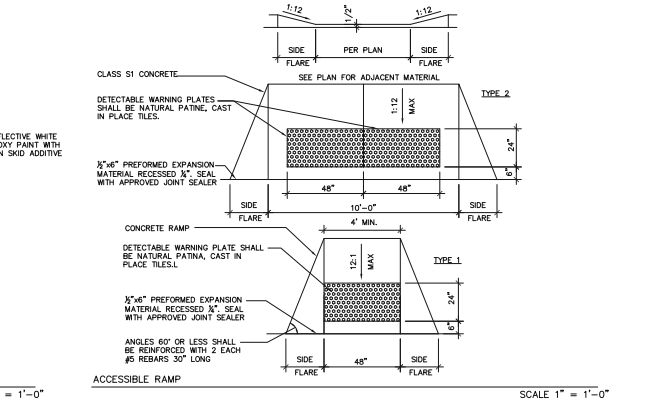
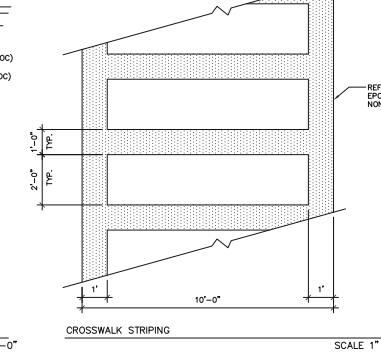
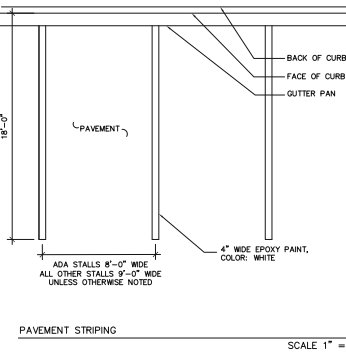
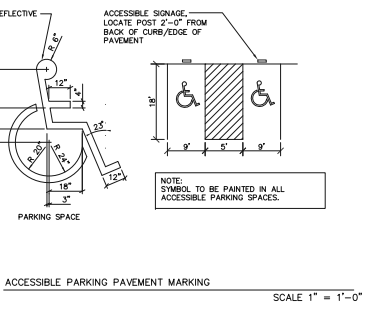
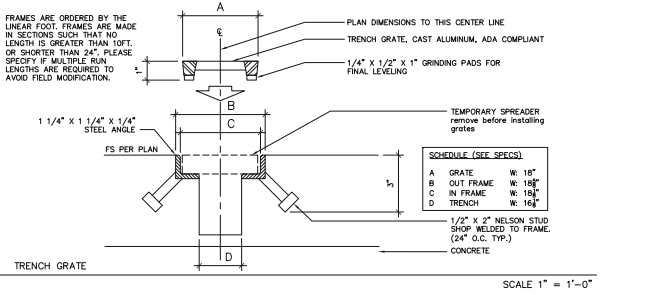
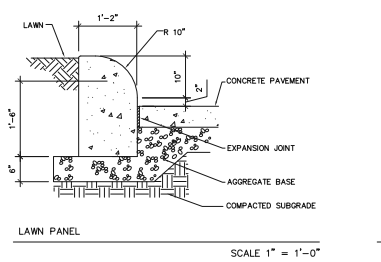
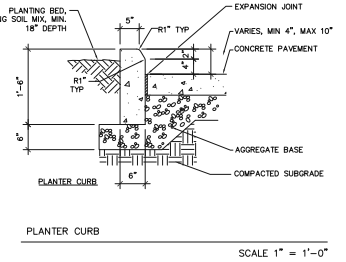
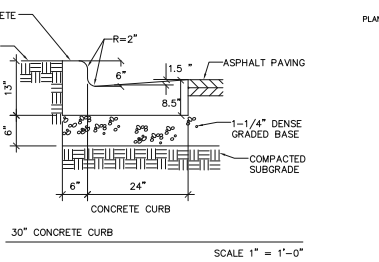
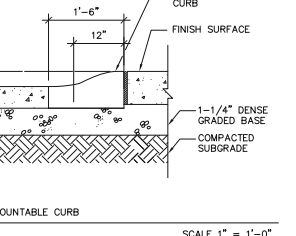
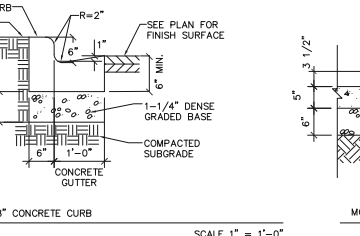
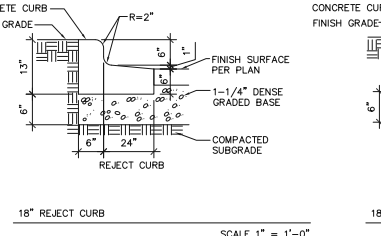
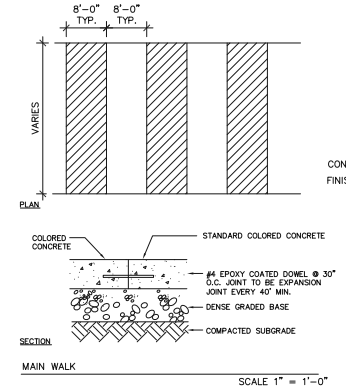
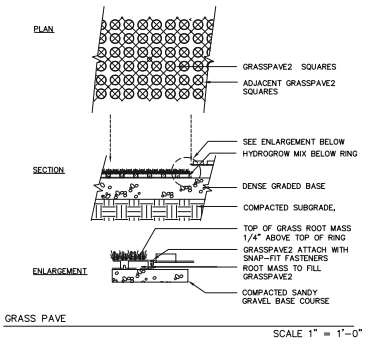
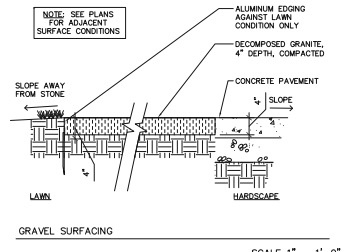
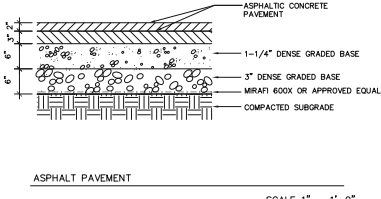
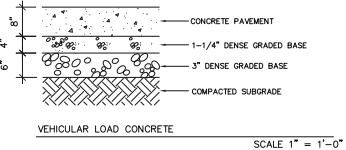
LP-420



NOTES:
1. MEDIUM BROOM FINISH, PERPENDICULAR TO DIRECTION OF TRAVEL, UNLESS OTHERWISE STATED.
2. PROVIDE EXPANSION JOINTS 30' ALL WAYS, MINIMUM.
3. STANDARD COLOR CONCRETE UNLESS NOTED.



NOTES:
1. LONGITUDINAL (EXPANSION) JOINTS SHALL HAVE 24" LONG #4 EPOXY COATED REBAR AT 30' O.C. AT A DEPTH OF 3 3/4" ± 1"
2. TRANSVERSE JOINTS SHALL HAVE 18" LONG, 1" DIA. EPOXY COATED, SMOOTH DOWEL BARS AT 72" O.C. AT 4" DEPTH.
3. STANDARD CONCRETE COLORED UNLESS NOTED.



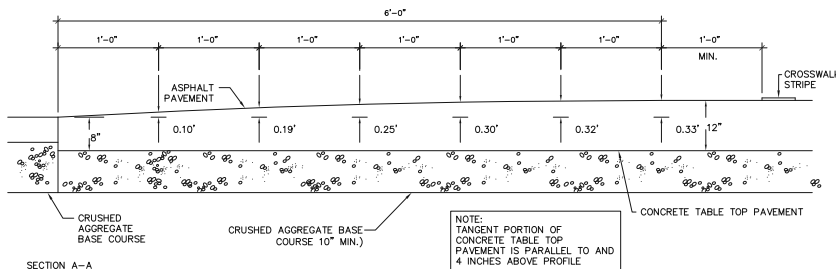
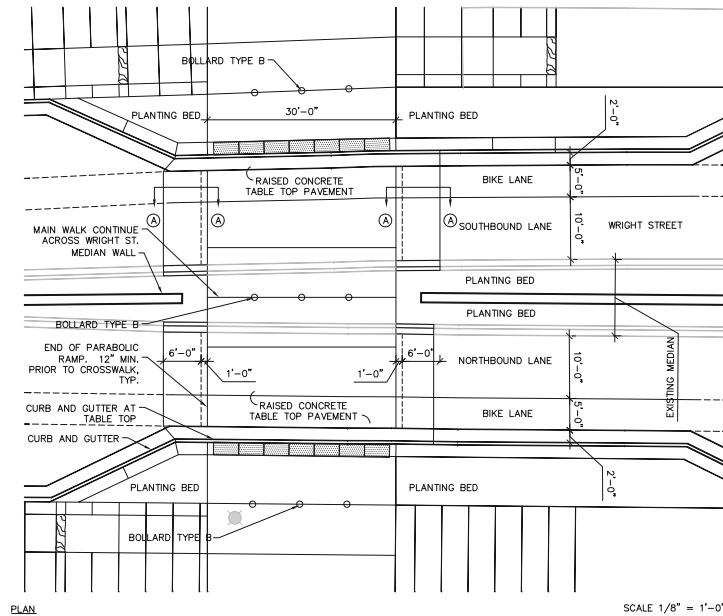
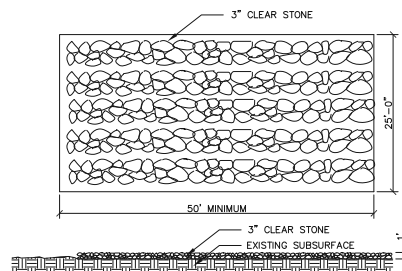


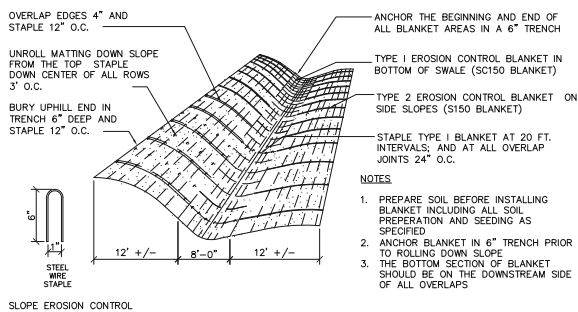
TABLE TOP CROSSING

SCALE 1/2" = 1'-0"

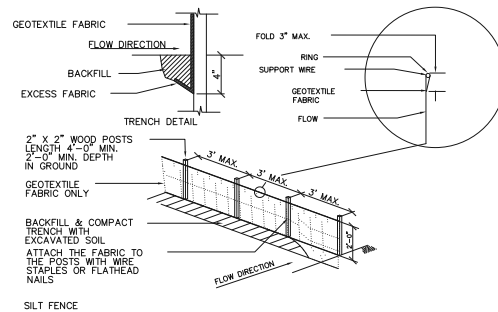


TRACKING PAD

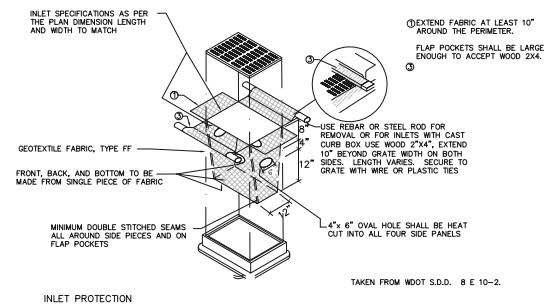
NTS



SCALE 1" = 1'-0"

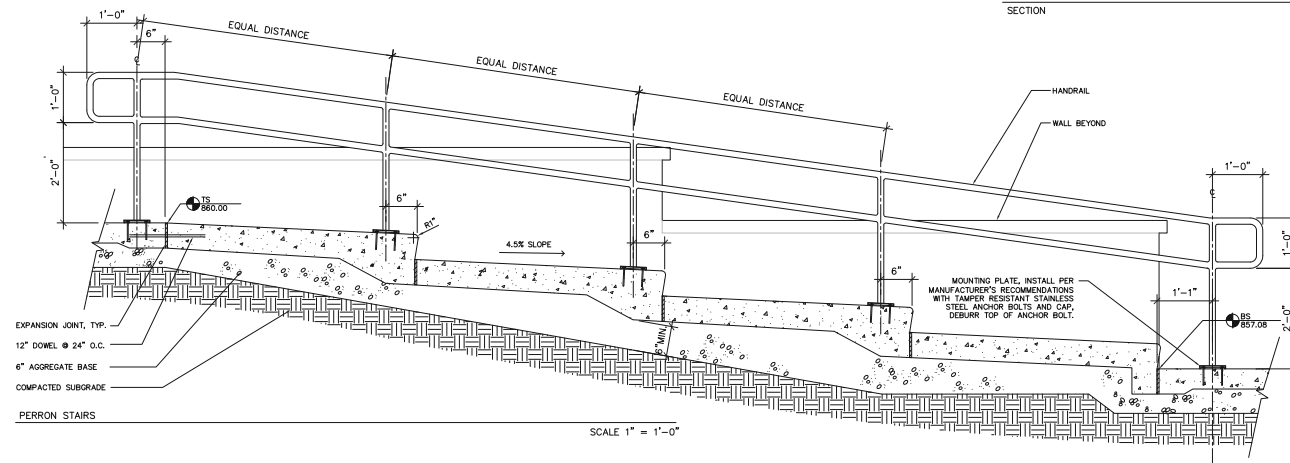
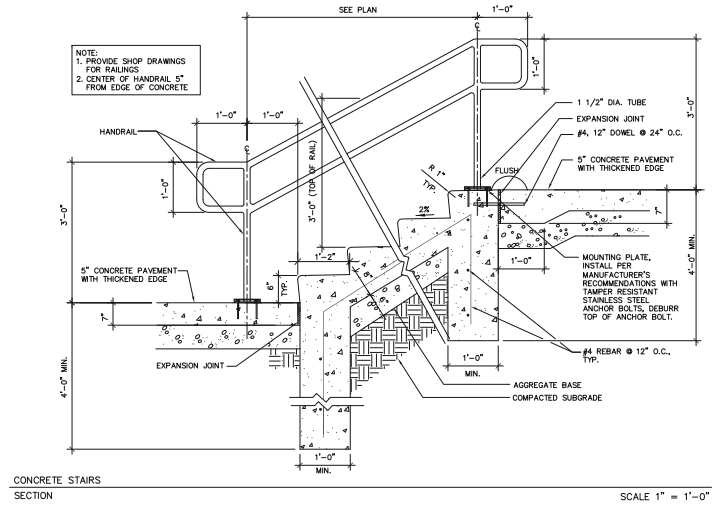
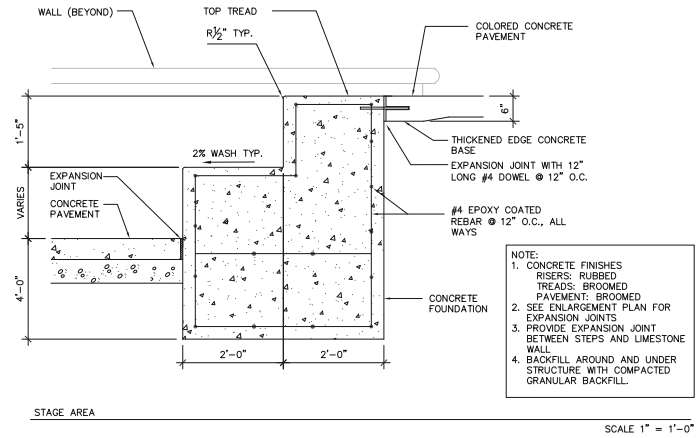
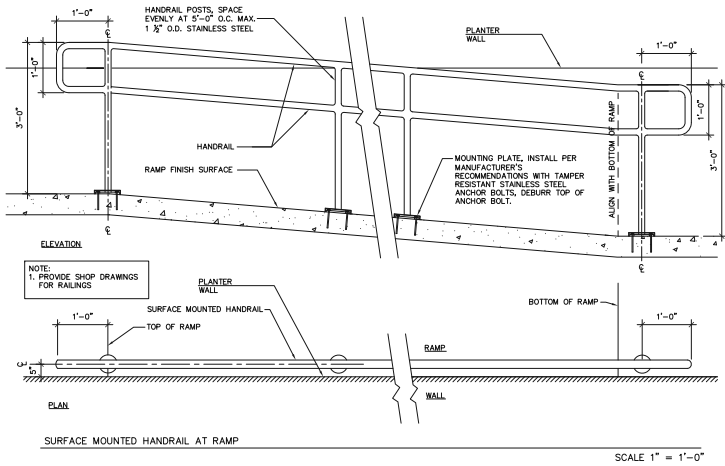


SCALE 1" = 1'-0"

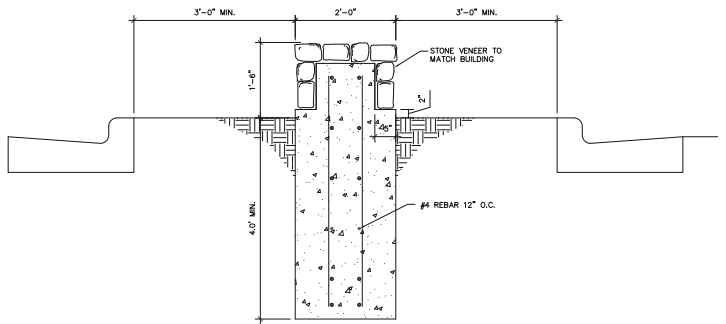


TAKEN FROM WDOT S.D.D. 8 E 10-2

SCALE 1" = 1'-0"

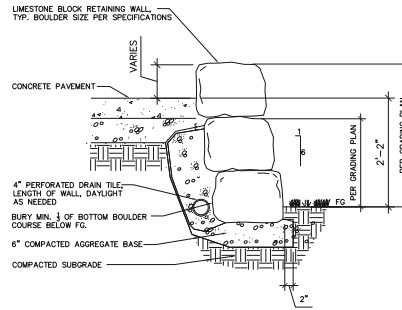


File: P:\3401\2434-MC-C-15.MPT\04\17-13.dwg Layout: D-1 User: rwhitman PlotTime: Apr 05, 2011 11:25am



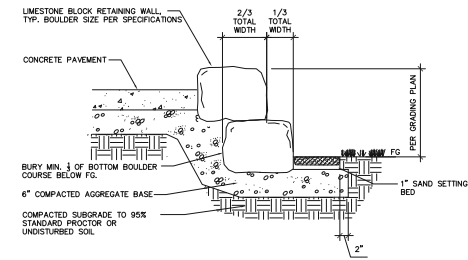
MEDIAN WALL

SCALE 1" = 1'-0"



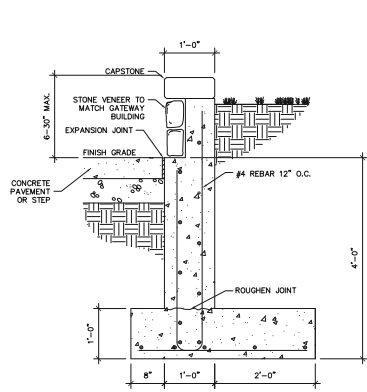
STONE WALL A
SECTION

SCALE 1" = 1'-0"



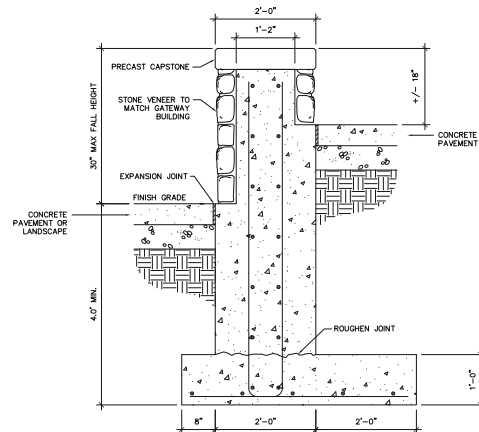
STONE WALL B
SECTION

SCALE 1" = 1'-0"



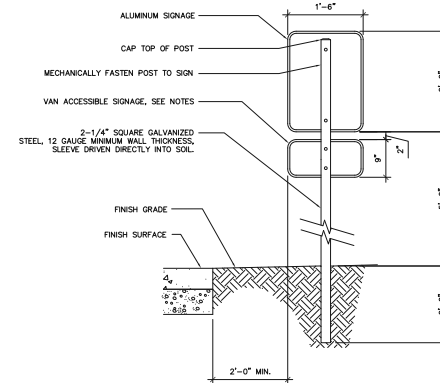
VENER PLANTER

SCALE 1" = 1'-0"



STONE VENER WALL

SCALE 1" = 1'-0"



SIGN

SCALE 1" = 1'-0"

- NOTES:
- SIGN BLANKS: USE ALUMINUM ALLOY 5052-H38 COMPLYING WITH ASTM B 209. USE BLANKS CONFORMING TO THE ALUMINUM ASSOCIATION, INC. R01T.
 - SIGN SHALL BE 0.08 INCH THICK SHEET.
 - MOUNT SIGNAGE WITH ALUMINUM, VANDAL PROOF HARDWARE.
 - ADA PARKING SIGN MUST BE A WHITE RECTANGLE WITH LONGER DIMENSION VERTICAL HAVING A GREEN MESSAGE, AND A BLUE AND WHITE INTERNATIONAL SYMBOL OF ACCESSIBILITY. THE SIGN MAY BE EITHER REFLECTIVE OR NON-REFLECTIVE.
 - ADD "VAN ACCESSIBLE" SIGNAGE WHERE INDICATED ON PLANS.
 - ADD "FIRE LANE, NO PARKING" SIGNAGE WHERE INDICATED ON PLANS. SIGNAGE SHALL CONFORM WITH IF 503.3.
 - SEE SHEET LAYOUT PLAN FOR SIGNAGE TYPES AND LOCATIONS.

Project Title

Truax
AHB

City of Madison,
Wisconsin

Issued For: Approval
Issue Date: 04/06/2011
SAA Project No. 2434
MC Project No. -
Bid Pkg No. B11-025

Revision Date

SAA DESIGN GROUP
SAA Design Group, Inc.
717 John Nields Drive
Madison, WI 53713
Ph: 608-233-0900
F: 608-233-7750
www.saa-madison.com



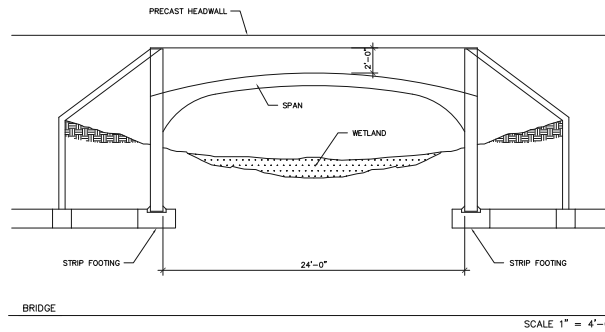
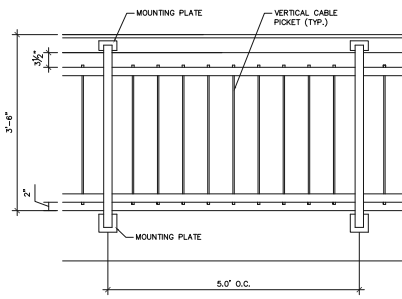
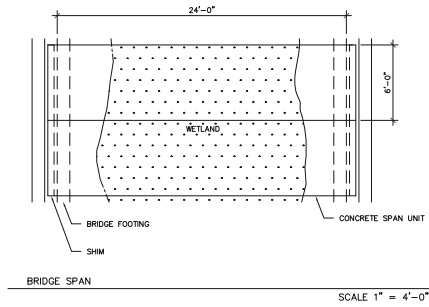
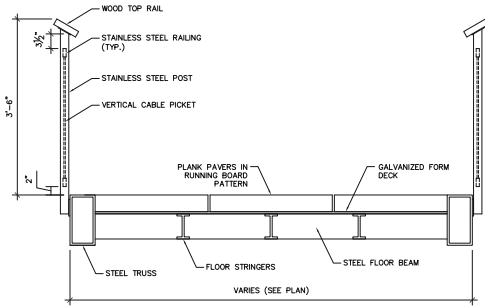
DRAWING

DETAILS



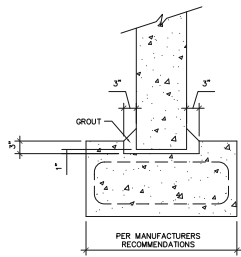
Sheet Number

LP-505

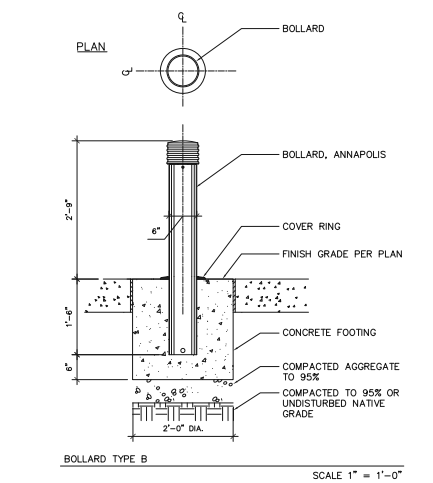
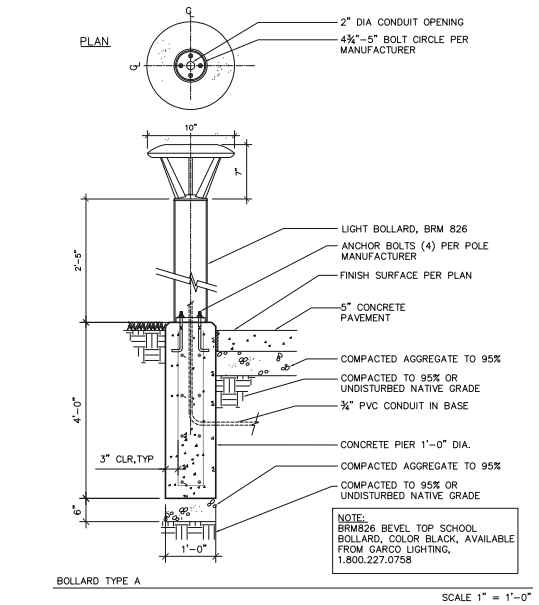
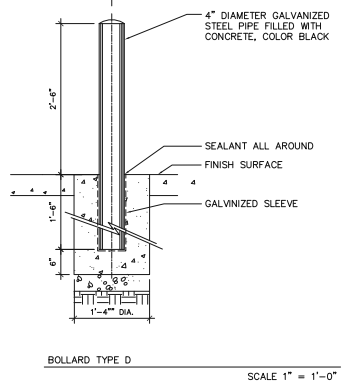
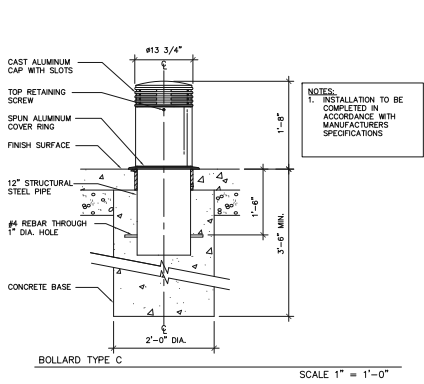
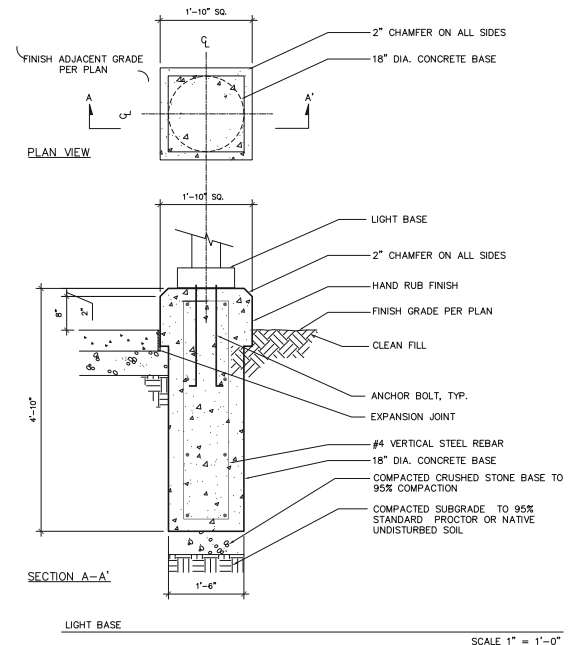
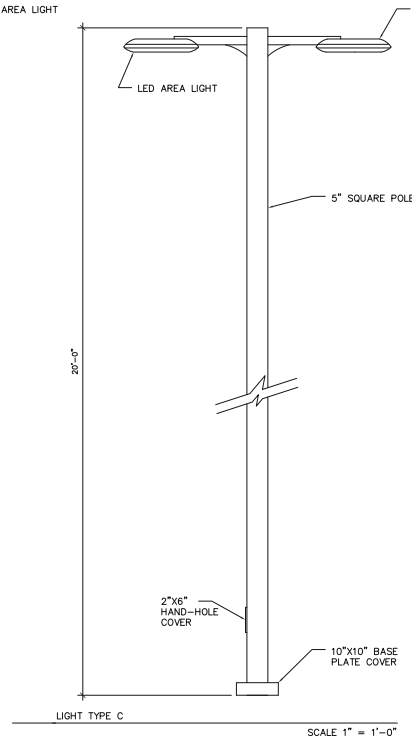
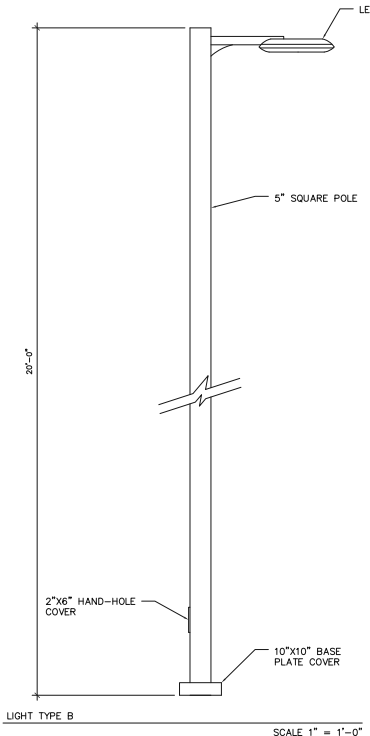
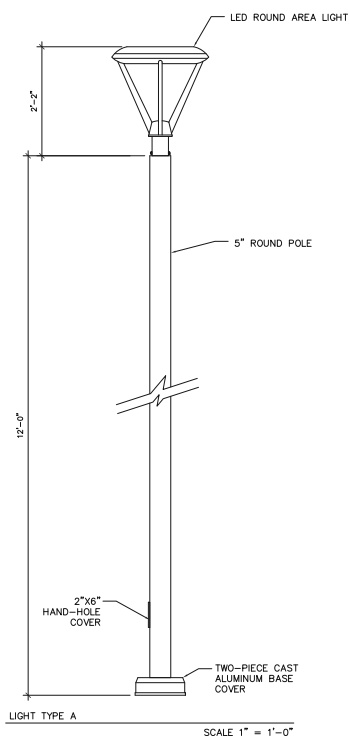


BRIDGE SCALE 1" = 1'-0"

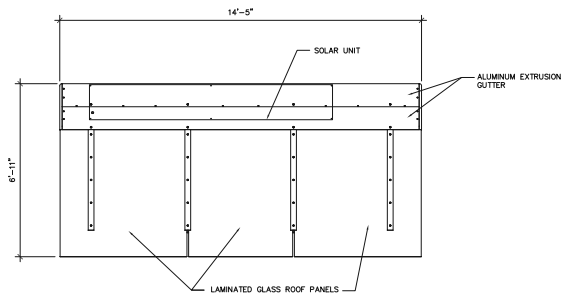
BRIDGE SCALE 1" = 4'-0"



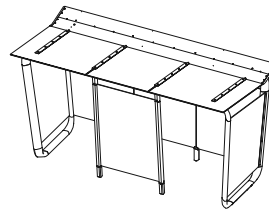
STRIP FOOTING SCALE 1" = 1'-0"



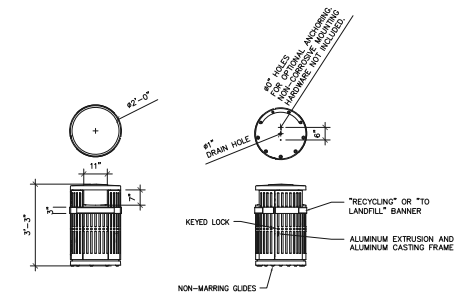
File: P:\3401\2434-MC-CES_MPT\3401\2434-MC-02.dwg Layout: D-4 User: rwhitson PlotDate: Apr 05, 2011 11:30am



PLAN

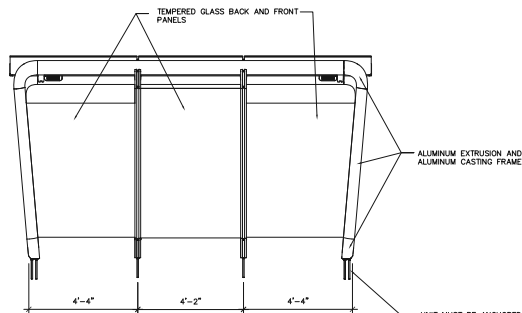


ISOMETRIC

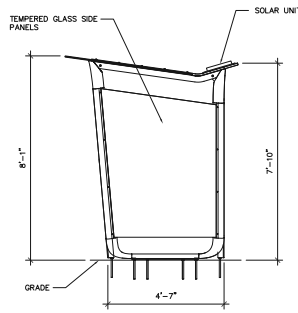


RECYCLING AND LITTER RECEPTACLE

SCALE 1" = 2'-0"



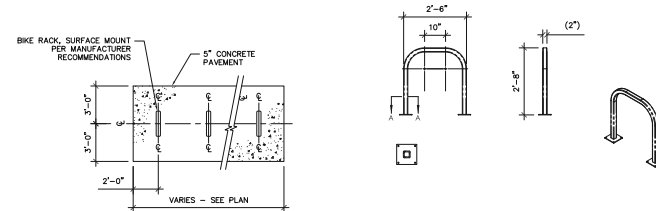
FRONT ELEVATION



SIDE ELEVATION

BUS SHELTER

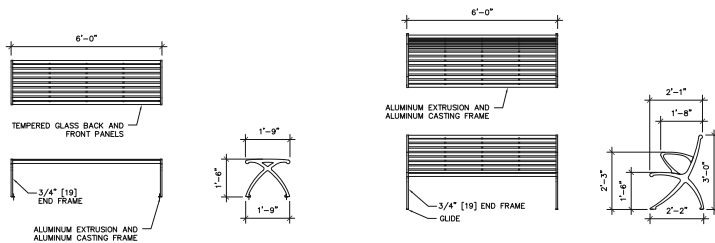
SCALE 1" = 2'-0"



PLAN

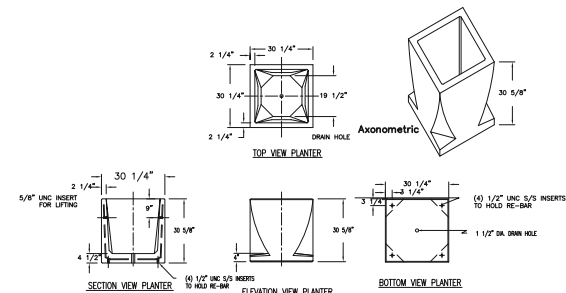
BICYCLE PARKING

SCALE 1" = 2'-0"



BENCHES

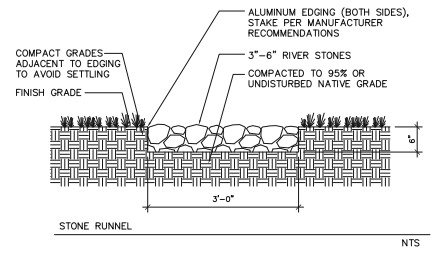
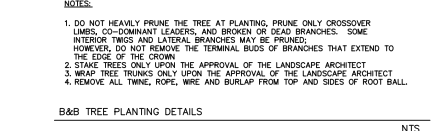
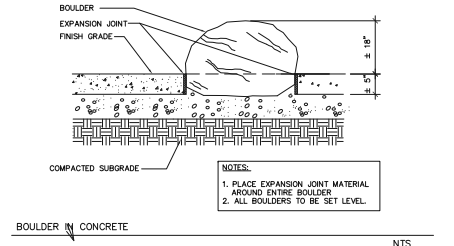
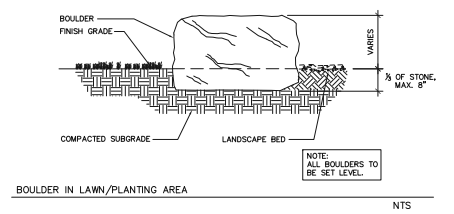
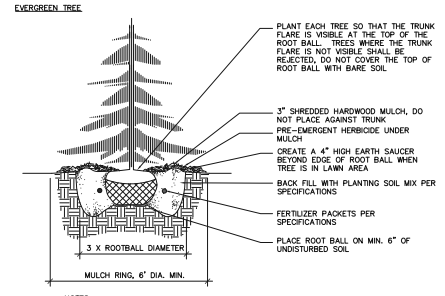
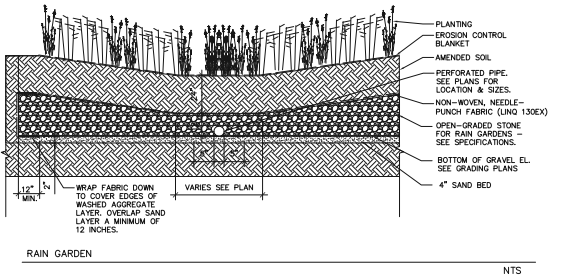
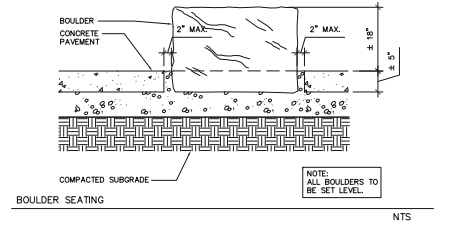
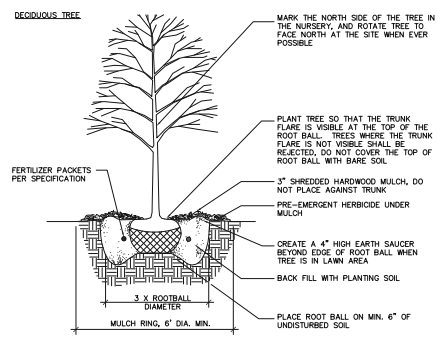
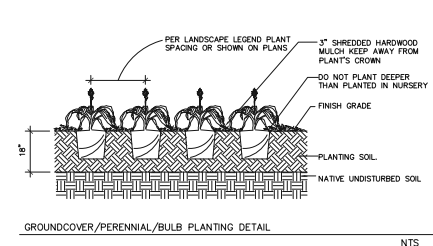
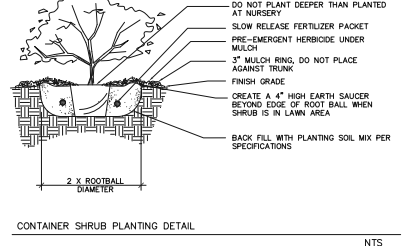
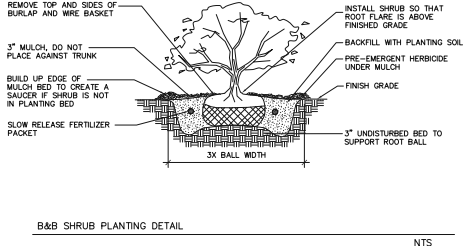
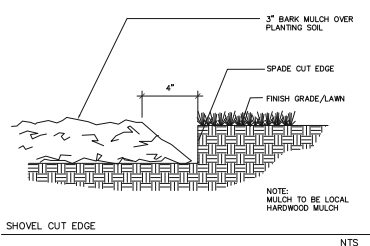
SCALE 1" = 2'-0"



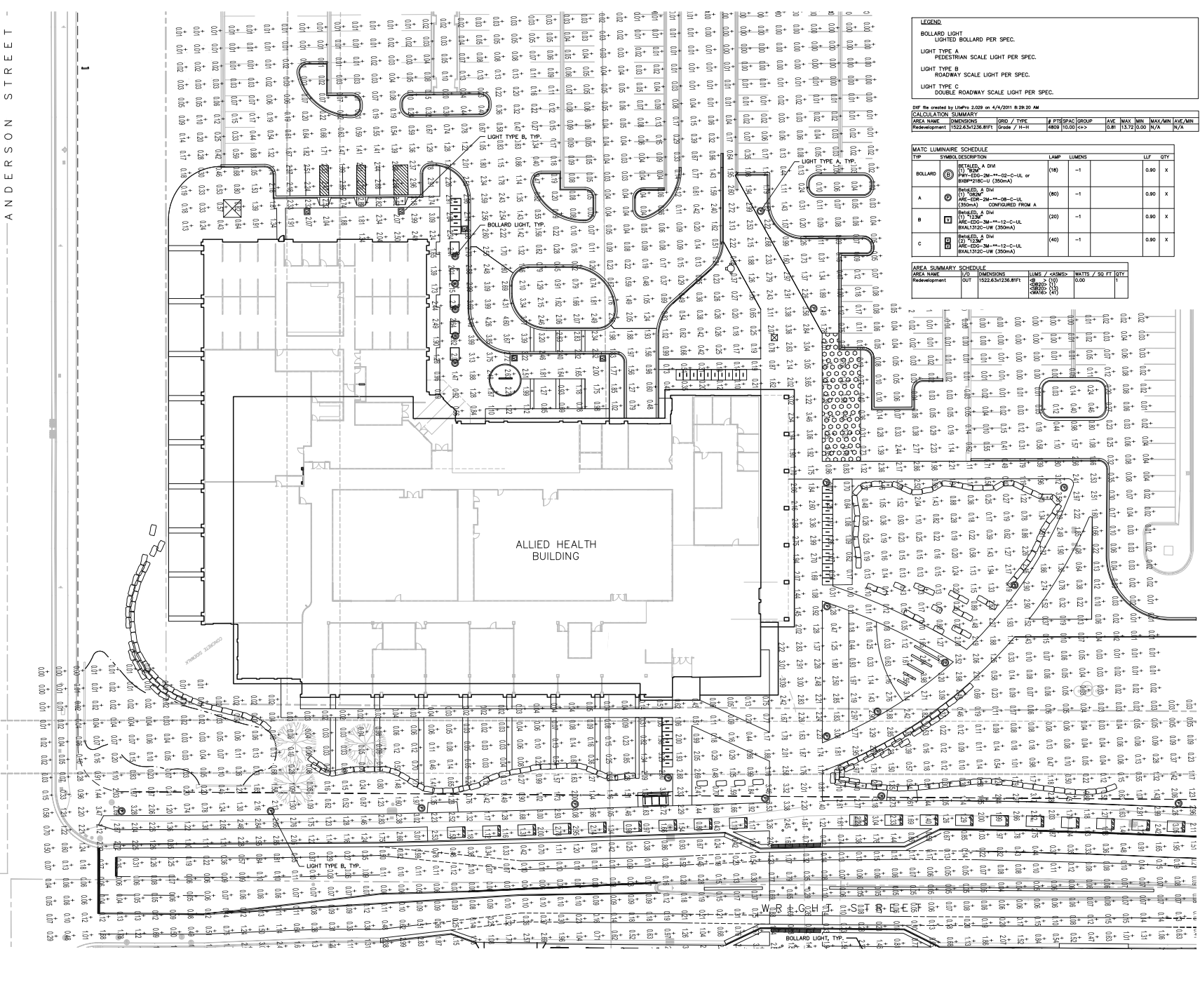
SITELINES SL-406

PLANTER

SCALE 1" = 2'-0"



File: P:\3\401\2434-MC-C-LS-MP\CAD\17-2-18.dwg Layout: D-4 User: mwholmes Printed: Apr 05, 2011 11:30am



Project Title

Truax
AHB

City of Madison,
Wisconsin

Issued For: Approval
Issue Date: 04/06/2011
SAA Project No. 2434
MC Project No. -
Bid Pkg No. B11-025

Revision Date



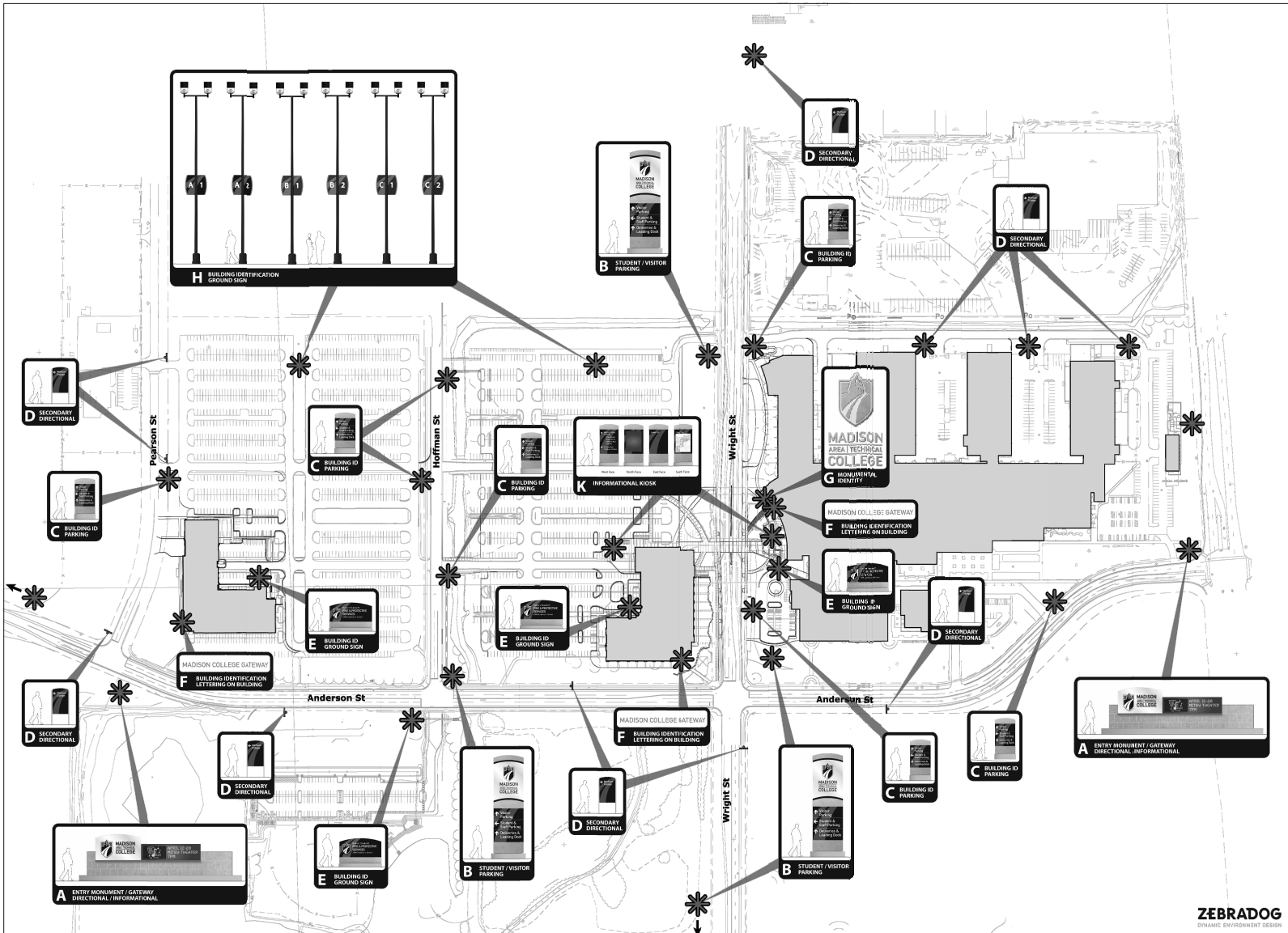
Conventional Design Forum
315 West E Line Street
Eshelburn, Illinois 60126
630-576-3000 Phone
630-550-2030 Fax
www.cdfinc.com

DRAWING

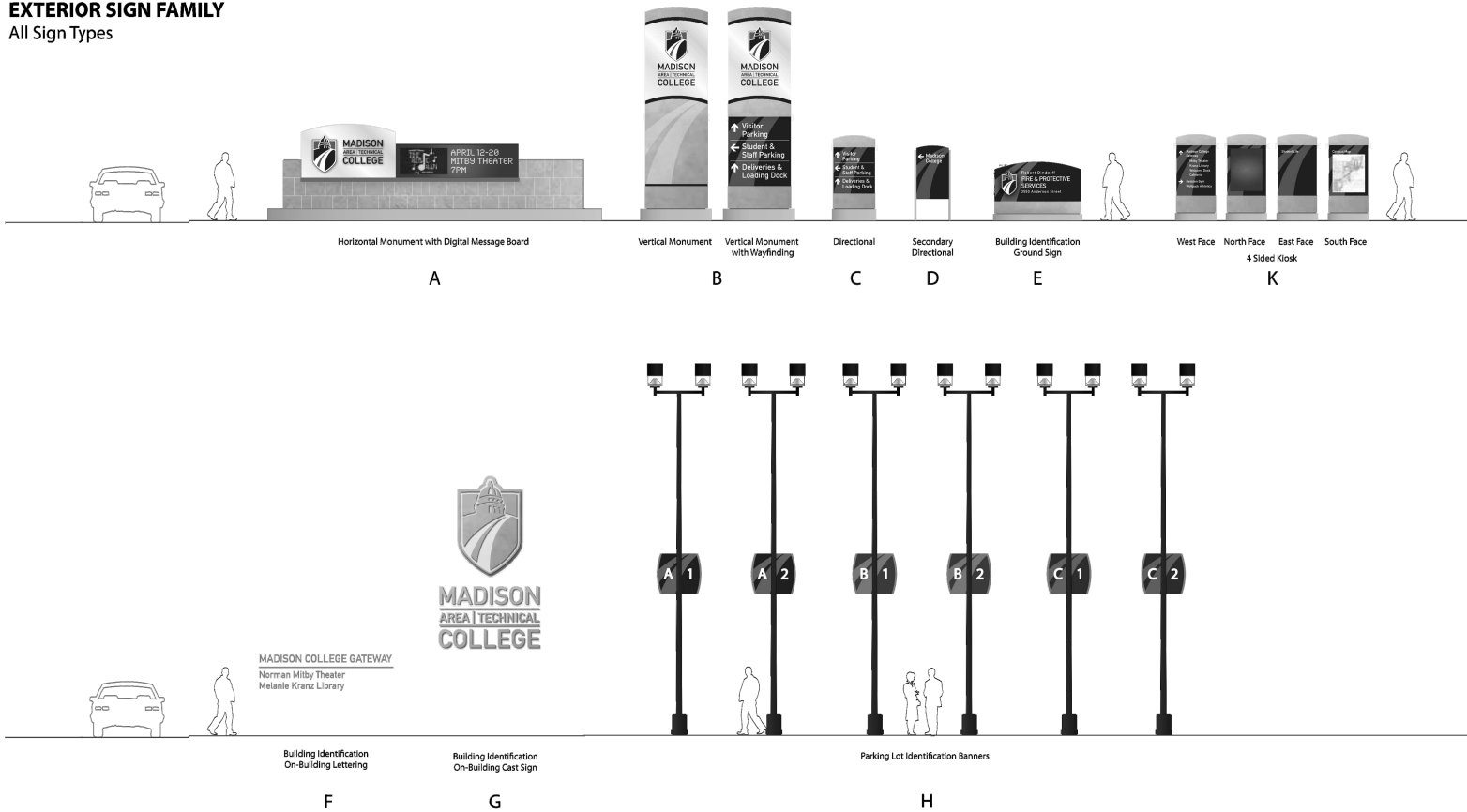
SIGN LOCATION PLAN

Sheet Number

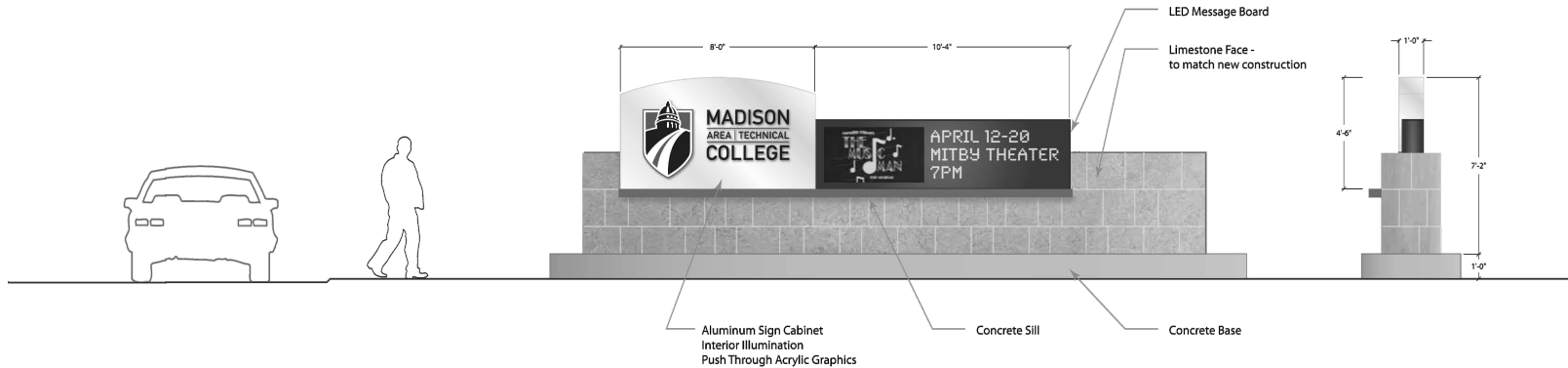
LP-700



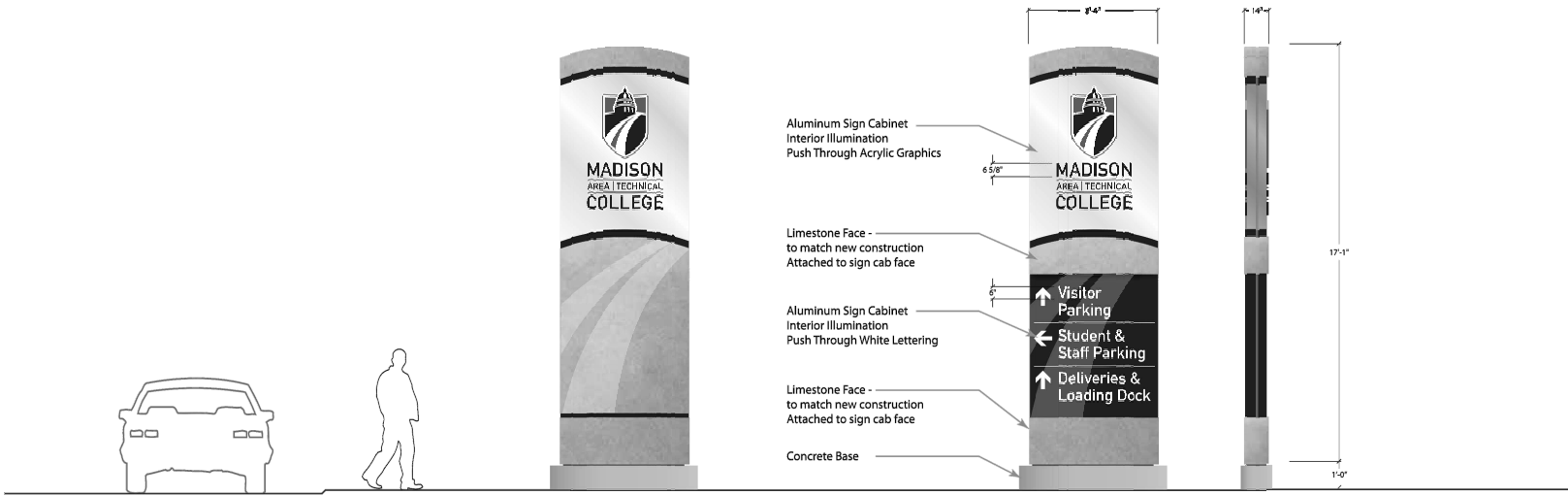
EXTERIOR SIGN FAMILY
All Sign Types



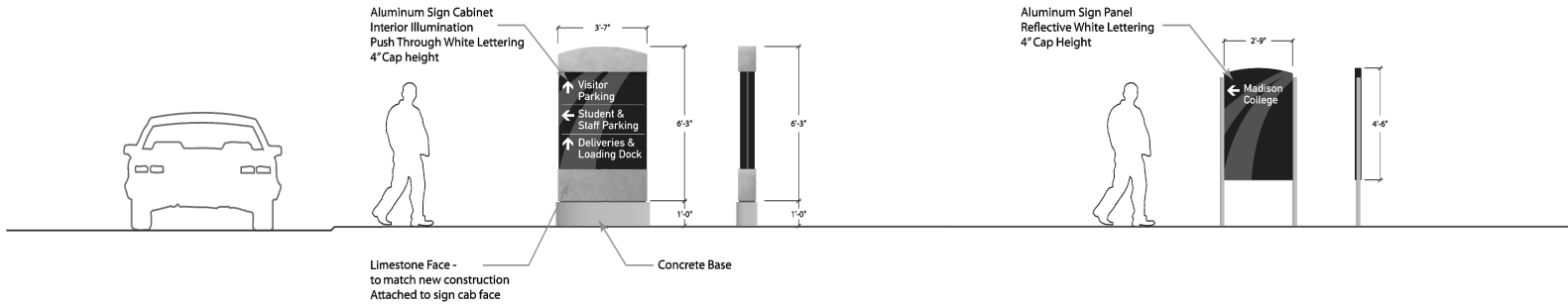
SIGN TYPE A
Horizontal Monument



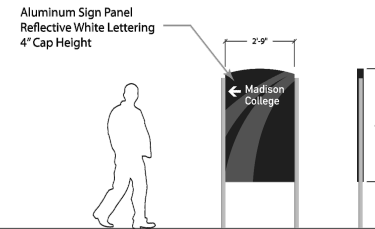
SIGN TYPE B
Vertical Monument &
Vertical Monument with Wayfinding Directional



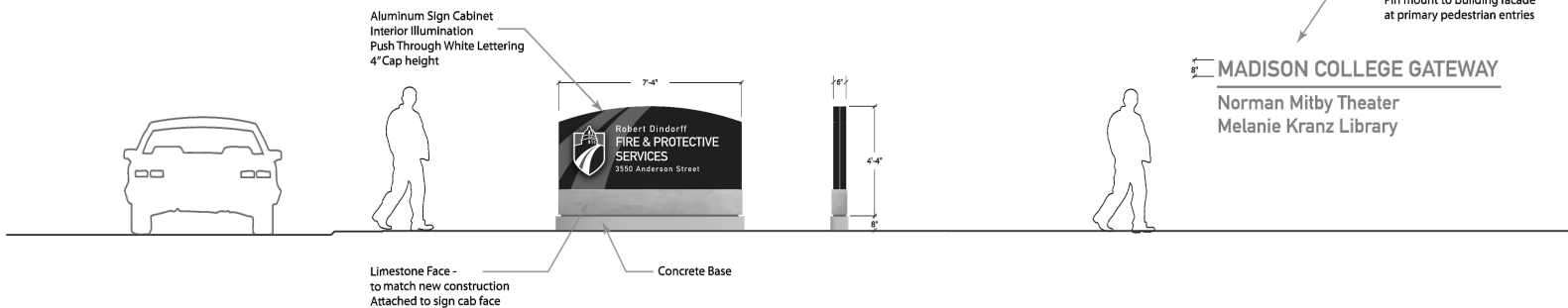
SIGN TYPE C
Directional



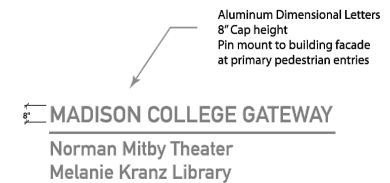
SIGN TYPE D
Secondary Directional



SIGN TYPE E
Building Identification
Ground Sign



SIGN TYPE F
Building Identification
Lettering On Building



Project Title

Truax
AHB

City of Madison,
Wisconsin

Issued For: Approval
Issue Date: 04/06/2011
SAA Project No. 2434
MC Project No. -
Bid Pkg No. B11-025

Revision	Date

SAA DESIGN
GROUP
SAA Design Group, Inc.
717 John Nolan Drive
Madison, WI 53713
Ph: 608-255-9900
F: 608-255-7750
www.saa-madison.com

CD
E
Conceptual Design Forum
315 West E Pine Street
Eshelburn, Illinois 61726
608-295-2000 Phone
608-550-2030 Fax
www.cdfinc.com

SIGN TYPE G
Monument Identity On-Building



Dimensional Sign Cabinet & Lettering
Stone Replica Finish to All Surfaces
Finish to Match Building Facade
Mounted to Gateway Building Tower



ZEBRADOG | **MADISON COLLEGE**
DYNAMIC ENVIRONMENT DESIGN | Exterior Signage - Concept Development 04.01.11

5

DRAWING

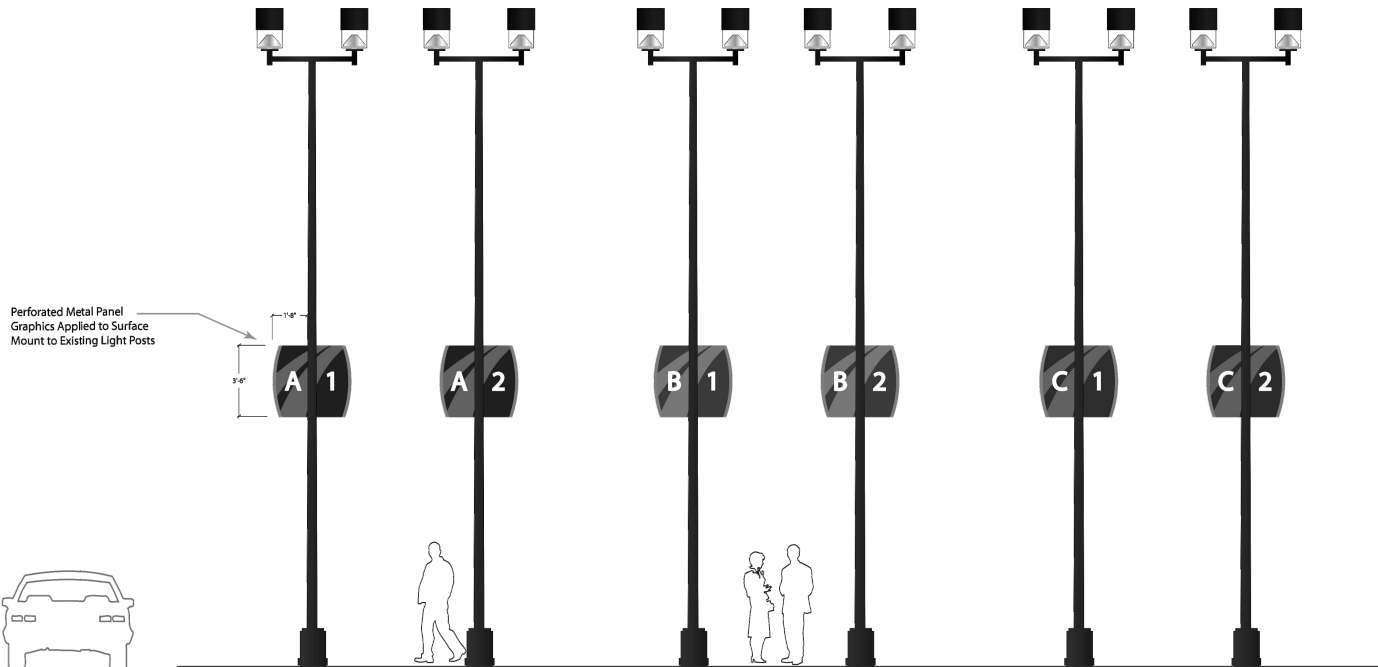
SIGN DETAILS

Sheet Number

LP-705

Revision	Date

SIGN TYPE H
Parking Lot Banner System



Project Title

Truax
AHB

City of Madison,
Wisconsin

Issued For: Approval
Issue Date: 04/06/2011
SAA Project No. 2434
MC Project No. -
Bid Pkg No. B11-025

Revision	Date

SIGN TYPE K
4 Sided Pedestrian Kiosk

