

VILLAGE AT AUTUMN LAKE REPLAT

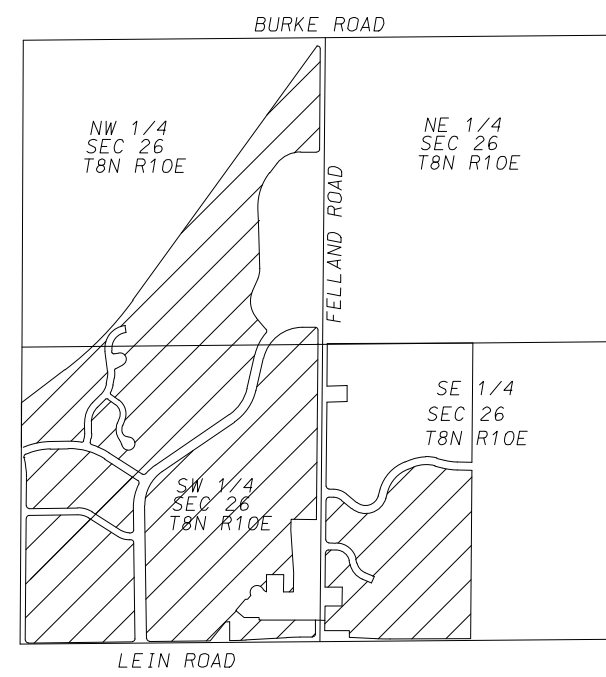
LOTS 1-519 AND OUTLOTS 1-15, OUTLOTS 18-39 AND VARIOUS DISCONTINUED ROADS WITHIN VILLAGE AT AUTUMN LAKE,
 LOCATED IN THE NE1/4, SW1/4, SE1/4 OF THE NW1/4, AND THE NE1/4, NW1/4, SW1/4 AND THE SE1/4 OF THE SW1/4, AND
 THE NW1/4 AND THE SW1/4 OF THE SE1/4 OF SECTION 26, T8N, R10E, CITY OF MADISON, DANE COUNTY, WISCONSIN

There are no objections to this plat with respect to
 Secs. 236.15, 236.16, 236.20 and 236.21(1) and (2),
 Wis. Stats. as provided by s. 236.12, Wis. Stats.

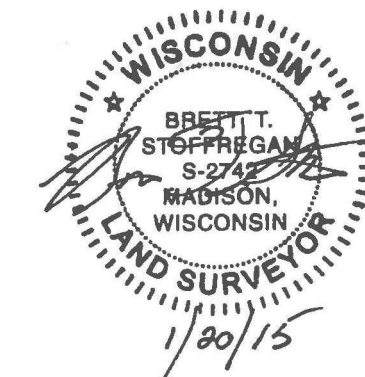
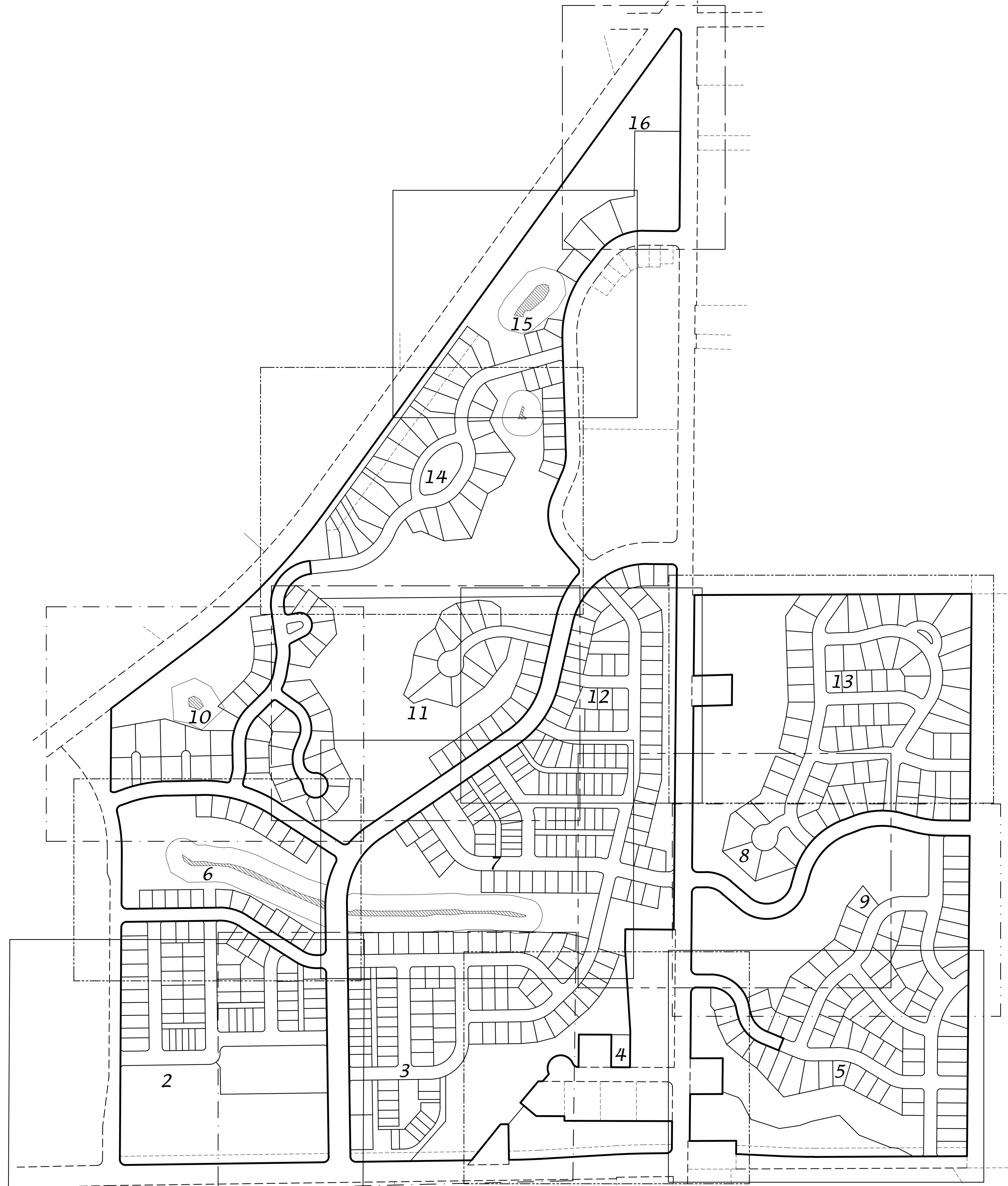
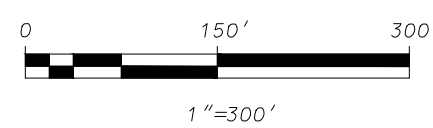
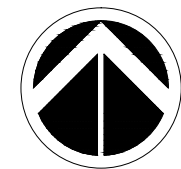
Certified _____, 20__



Department of Administration



LOCATION MAP
 NOT TO SCALE



D'ONOFRIO KOTTKE AND ASSOCIATES, INC.

7530 Westward Way, Madison, WI 53717
 Phone: 608.833.7530 • Fax: 608.833.1089

YOUR NATURAL RESOURCE FOR LAND DEVELOPMENT

FN:14-07-117

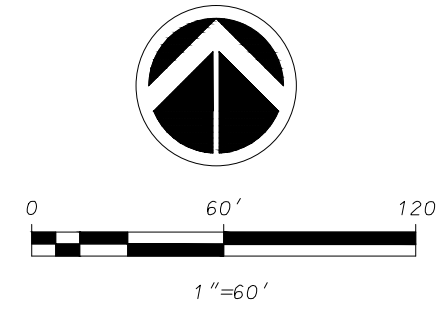
VILLAGE AT AUTUMN LAKE REPLAT

LOTS 1-519 AND OUTLOTS 1-15, OUTLOTS 18-39 AND VARIOUS DISCONTINUED ROADS WITHIN VILLAGE AT AUTUMN LAKE, LOCATED IN THE NE1/4, SW1/4, SE1/4 OF THE NW1/4, AND THE NE1/4, NW1/4, SW1/4 AND THE SE1/4 OF THE SW1/4, AND THE NW1/4 AND THE SW1/4 OF THE SE1/4 OF SECTION 26, T8N, R10E, CITY OF MADISON, DANE COUNTY, WISCONSIN

There are no objections to this plat with respect to Secs. 236.15, 236.16, 236.20 and 236.21(1) and (2), Wis. Stats. as provided by s. 236.12, Wis. Stats.

Certified _____, 20____

Department of Administration

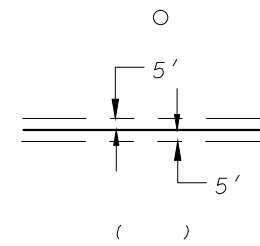


GRID NORTH
WISCONSIN COUNTY COORDINATE SYSTEM
(DANE ZONE)
WEST LINE OF THE NE1/4 OF SECTION 26,
T8N, R10E BEARS N00°27'32"E

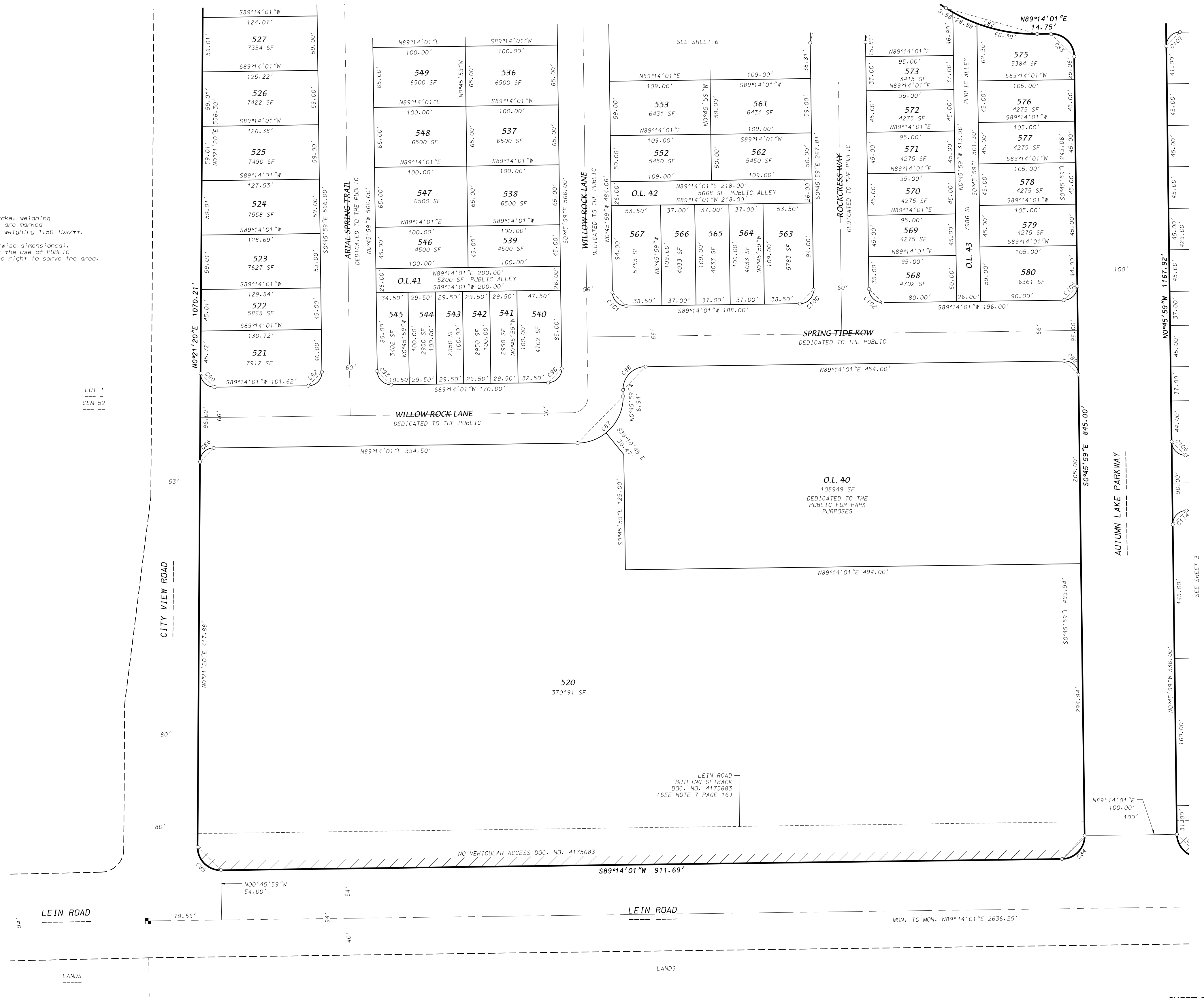
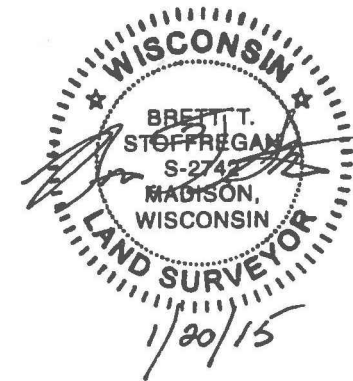
LEGEND

Placed 1-1/4" x 18" solid round iron rebar stake, weighing 4.30 lbs/ft. All other lot and outlot corners are marked with 3/4" x 18" solid round iron rebar stakes, weighing 1.50 lbs/ft.

Public utility easement (5' wide unless otherwise dimensioned). Utility easements as herein set forth are for the use of PUBLIC BODIES and PRIVATE PUBLIC UTILITIES having the right to serve the area. (see note 4 sheet 5)



Recorded as Information



D'ONOFRIO KOTTKE AND ASSOCIATES, INC.
7530 Westward Way, Madison, WI 53717
Phone: 608.833.7530 • Fax: 608.833.1089
YOUR NATURAL RESOURCE FOR LAND DEVELOPMENT

FN:14-07-117

VILLAGE AT AUTUMN LAKE REPLAT

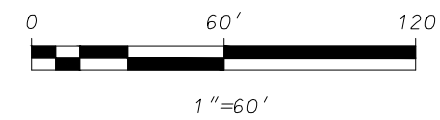
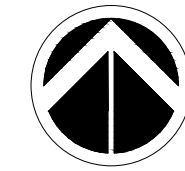
LOTS 1-519 AND OUTLOTS 1-15, OUTLOTS 18-39 AND VARIOUS DISCONTINUED ROADS WITHIN VILLAGE AT AUTUMN LAKE, LOCATED IN THE NE1/4, SW1/4, SE1/4 OF THE NW1/4, AND THE NE1/4, NW1/4, SW1/4 AND THE SE1/4 OF THE SW1/4, AND THE NW1/4 AND THE SW1/4 OF THE SE1/4 OF SECTION 26, T8N, R10E, CITY OF MADISON, DANE COUNTY, WISCONSIN

SEE SHEET 7

There are no objections to this plat with respect to Secs. 236.15, 236.16, 236.20 and 236.21(1) and (2), Wis. Stats. as provided by s. 236.12, Wis. Stats.

Certified _____, 20__

Department of Administration

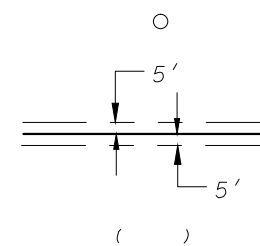


GRID NORTH
WISCONSIN COUNTY COORDINATE SYSTEM
(DANE ZONE)
WEST LINE OF THE NE1/4 OF SECTION 26,
T8N, R10E BEARS N00°27'32"E

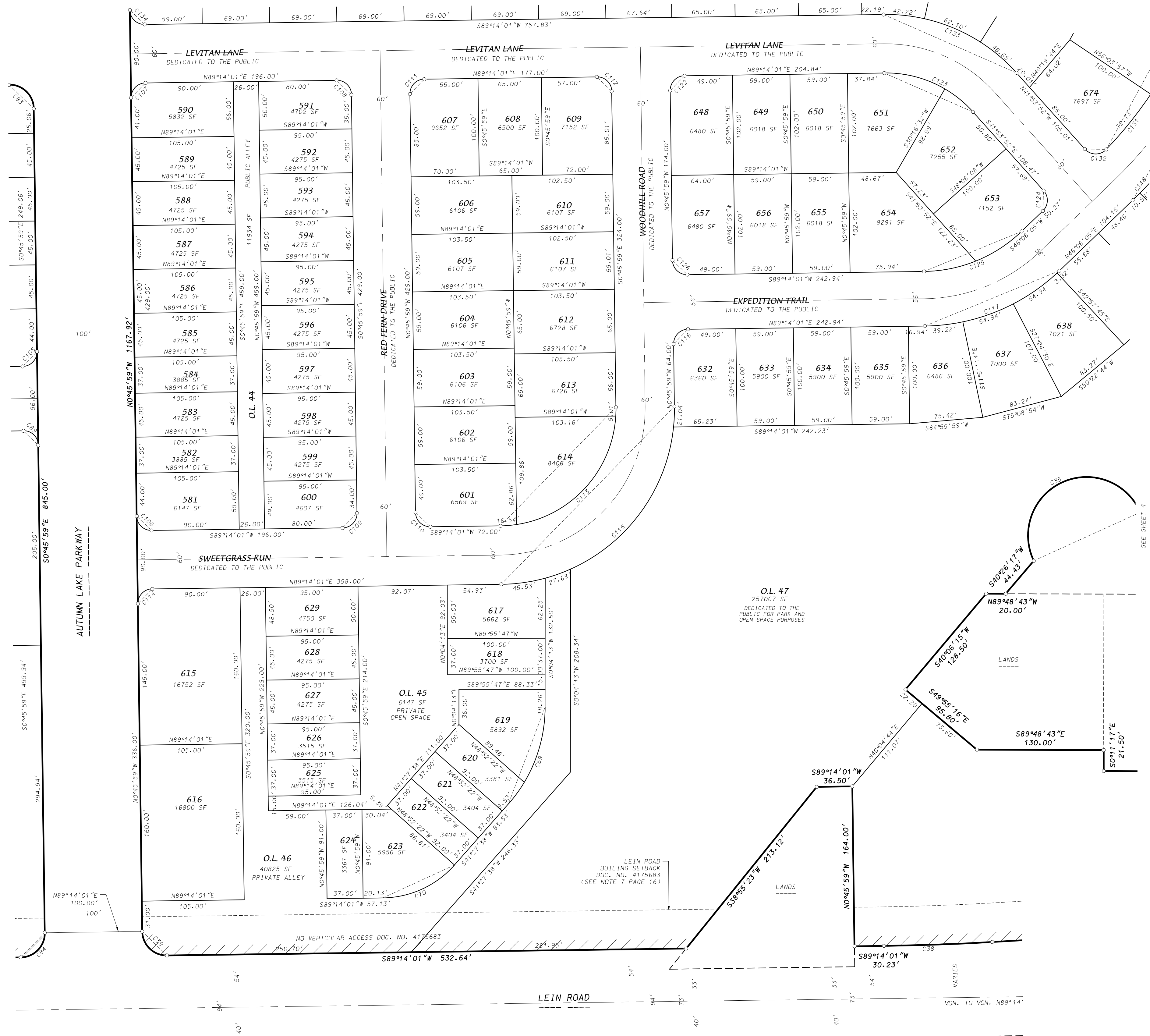
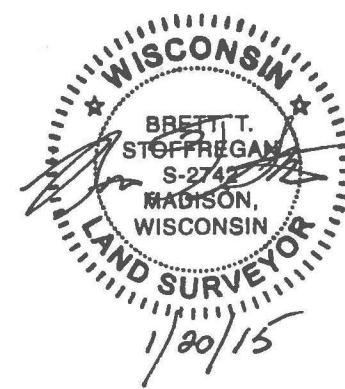
LEGEND

Placed 1-1/4" x 18" solid round iron rebar stake, weighing 4.30 lbs/ft. All other lot and outlot corners are marked with 3/4" x 18" solid round iron rebar stakes, weighing 1.50 lbs/ft.

Public utility easement (5' wide unless otherwise dimensioned). Utility easements as herein set forth are for the use of PUBLIC BODIES and PRIVATE PUBLIC UTILITIES having the right to serve the area. (see note 4 sheet 5)



() Recorded as Information



D'ONOFRIO KOTTKE AND ASSOCIATES, INC.
7530 Westward Way, Madison, WI 53717
Phone: 608.833.7530 • Fax: 608.833.1089
YOUR NATURAL RESOURCE FOR LAND DEVELOPMENT

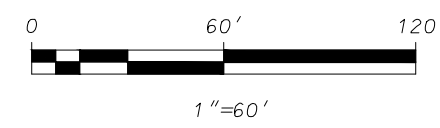
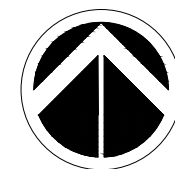
FN:14-07-117

LOT 1
CSM 13765

VILLAGE AT AUTUMN LAKE REPLAT

LOTS 1-519 AND OUTLOTS 1-15, OUTLOTS 18-39 AND VARIOUS DISCONTINUED ROADS WITHIN VILLAGE AT AUTUMN LAKE, LOCATED IN THE NE1/4, SW1/4, SE1/4 OF THE NW1/4, AND THE NE1/4, NW1/4, SW1/4 AND THE SE1/4 OF THE SW1/4, AND THE NW1/4 AND THE SW1/4 OF THE SE1/4 OF SECTION 26, T8N, R10E, CITY OF MADISON, DANE COUNTY, WISCONSIN

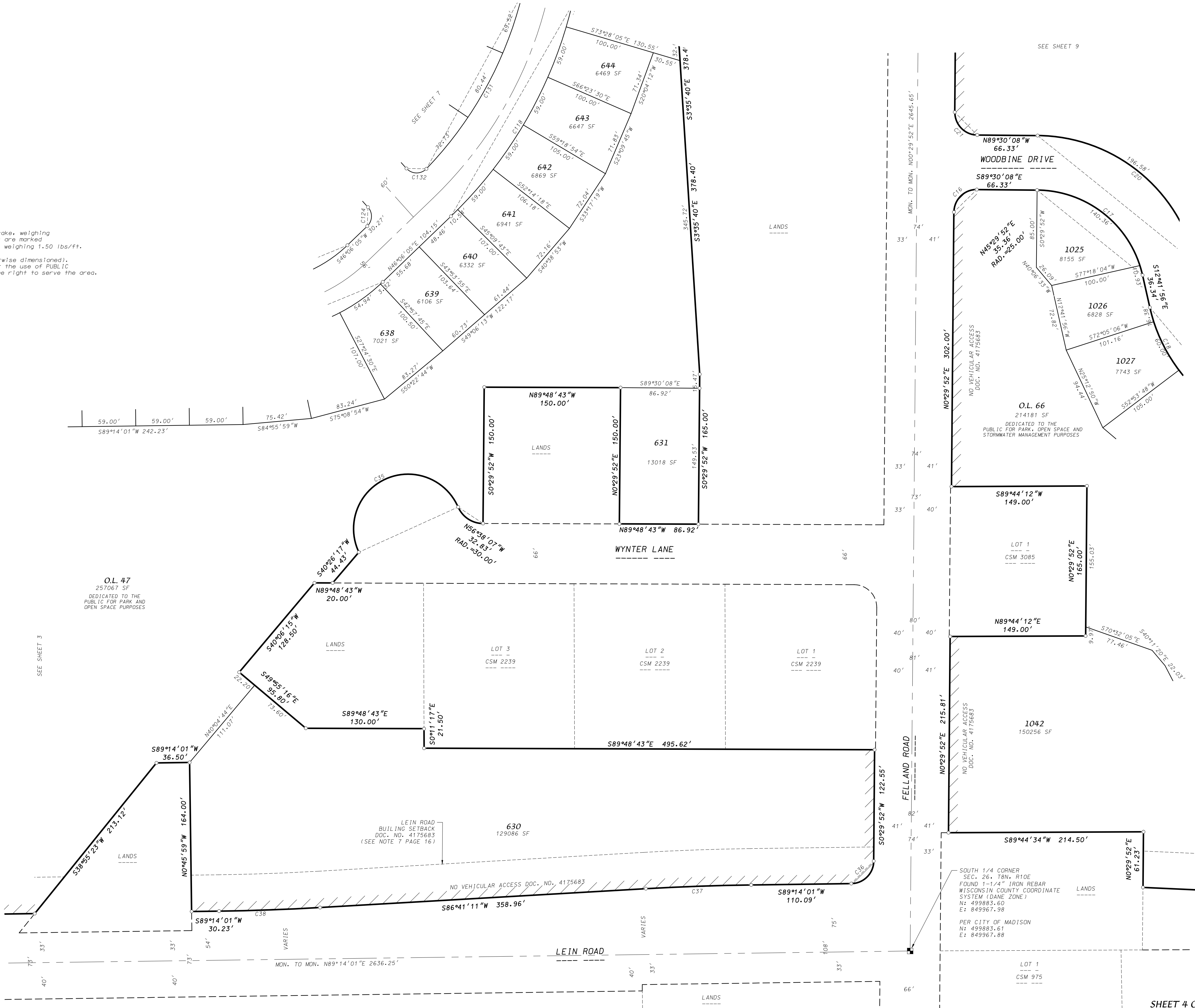
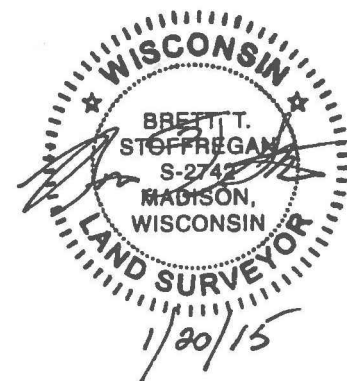
There are no objections to this plat with respect to Secs. 236.15, 236.16, 236.20 and 236.21(1) and (2), Wis. Stats. as provided by s. 236.12, Wis. Stats.
 Certified _____, 20____
 Department of Administration



GRID NORTH
 WISCONSIN COUNTY COORDINATE SYSTEM
 (DANE ZONE)
 WEST LINE OF THE NE1/4 OF SECTION 26,
 T8N, R10E BEARS N00°27'32"E

LEGEND

- Placed 1-1/4" x 18" solid round iron rebar stake, weighing 4.30 lbs/ft. All other lot and outlot corners are marked with 3/4" x 18" solid round iron rebar stakes, weighing 1.50 lbs/ft.
- Public utility easement (5' wide unless otherwise dimensioned). Utility easements as herein set forth are for the use of PUBLIC BODIES and PRIVATE PUBLIC UTILITIES having the right to serve the area. (see note 4 sheet 5)
- Recorded as Information



O.L. 47
 257067 SF
 DEDICATED TO THE PUBLIC FOR PARK AND OPEN SPACE PURPOSES

LEIN ROAD
 BUILDING SETBACK
 DOC. NO. 4175683
 (SEE NOTE 7 PAGE 16)

SOUTH 1/4 CORNER
 SEC. 26, T8N, R10E
 FOUND 1-1/4" IRON REBAR
 WISCONSIN COUNTY COORDINATE
 SYSTEM (DANE ZONE)
 N: 499883.60
 E: 849967.98
 PER CITY OF MADISON
 N: 499883.61
 E: 849967.88

D'ONOFRIO KOTTKE AND ASSOCIATES, INC.
 7530 Westward Way, Madison, WI 53717
 Phone: 608.833.7530 • Fax: 608.833.1089
 YOUR NATURAL RESOURCE FOR LAND DEVELOPMENT

FN:14-07-117

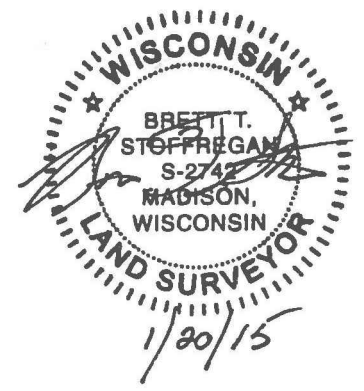
VILLAGE AT AUTUMN LAKE REPLAT

LOTS 1-519 AND OUTLOTS 1-15, OUTLOTS 18-39 AND VARIOUS DISCONTINUED ROADS WITHIN VILLAGE AT AUTUMN LAKE, LOCATED IN THE NE1/4, SW1/4, SE1/4 OF THE NW1/4, AND THE NE1/4, NW1/4, SW1/4 AND THE SE1/4 OF THE SW1/4, AND THE NW1/4 AND THE SW1/4 OF THE SE1/4 OF SECTION 26, T8N, R10E, CITY OF MADISON, DANE COUNTY, WISCONSIN

There are no objections to this plat with respect to Secs. 236.15, 236.16, 236.20 and 236.21(1) and (2), Wis. Stats. as provided by s. 236.12, Wis. Stats.

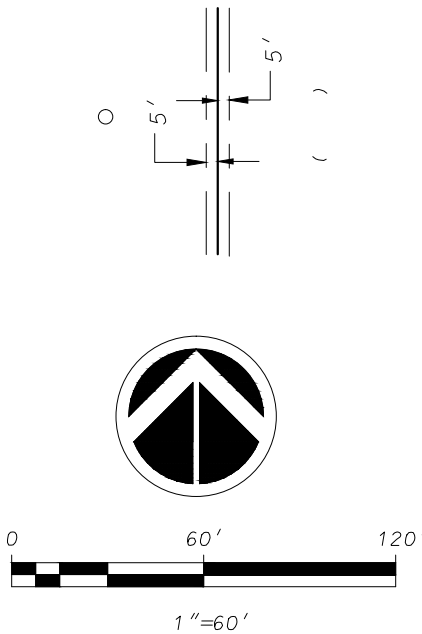
Certified _____, 20____

Department of Administration



LEGEND:
 Pinned 1-1/4" x 18" solid round iron rebar stakes, weighing 4.30 lbs/ft. All other lot and outlier corners are marked with 3/4" x 18" solid round iron rebar stakes, weighing 1.50 lbs/ft.
 Public utility easement (5' wide unless otherwise dimensioned). Utility easements as herein set forth are for the use of PUBLIC BODIES and PRIVATE PUBLIC UTILITIES having the right to serve the area. (See note 4, sheet 5)

Recorded as Information



GRID NORTH
 WISCONSIN COUNTY COORDINATE SYSTEM
 (DANE ZONE)
 WEST LINE OF THE NE1/4 OF SECTION 26,
 T8N, R10E BEARS N00°27'32"E

D'ONOFRIO KOTKE AND ASSOCIATES, INC.

7530 Westward Way, Madison, WI 53717
 Phone: 608.833.7530 • Fax: 608.833.1089

YOUR NATURAL RESOURCE FOR LAND DEVELOPMENT

FN:14-07-117



VILLAGE AT AUTUMN LAKE REPLAT

LOTS 1-519 AND OUTLOTS 1-15, OUTLOTS 18-39 AND VARIOUS DISCONTINUED ROADS WITHIN VILLAGE AT AUTUMN LAKE, LOCATED IN THE NE1/4, SW1/4, SE1/4 OF THE NW1/4, AND THE NE1/4, NW1/4, SW1/4 AND THE SE1/4 OF THE SW1/4, AND THE NW1/4 AND THE SW1/4 OF THE SE1/4 OF SECTION 26, T8N, R10E, CITY OF MADISON, DANE COUNTY, WISCONSIN

There are no objections to this plat with respect to Secs. 236.15, 236.16, 236.20 and 236.21(1) and (2), Wis. Stats. as provided by s. 236.12, Wis. Stats.

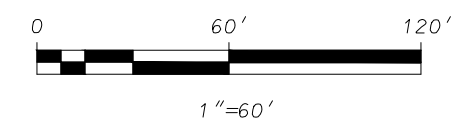
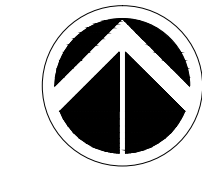
Certified _____, 20__

Department of Administration

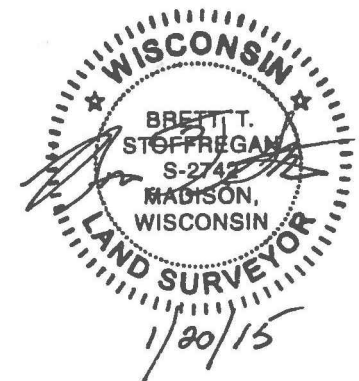
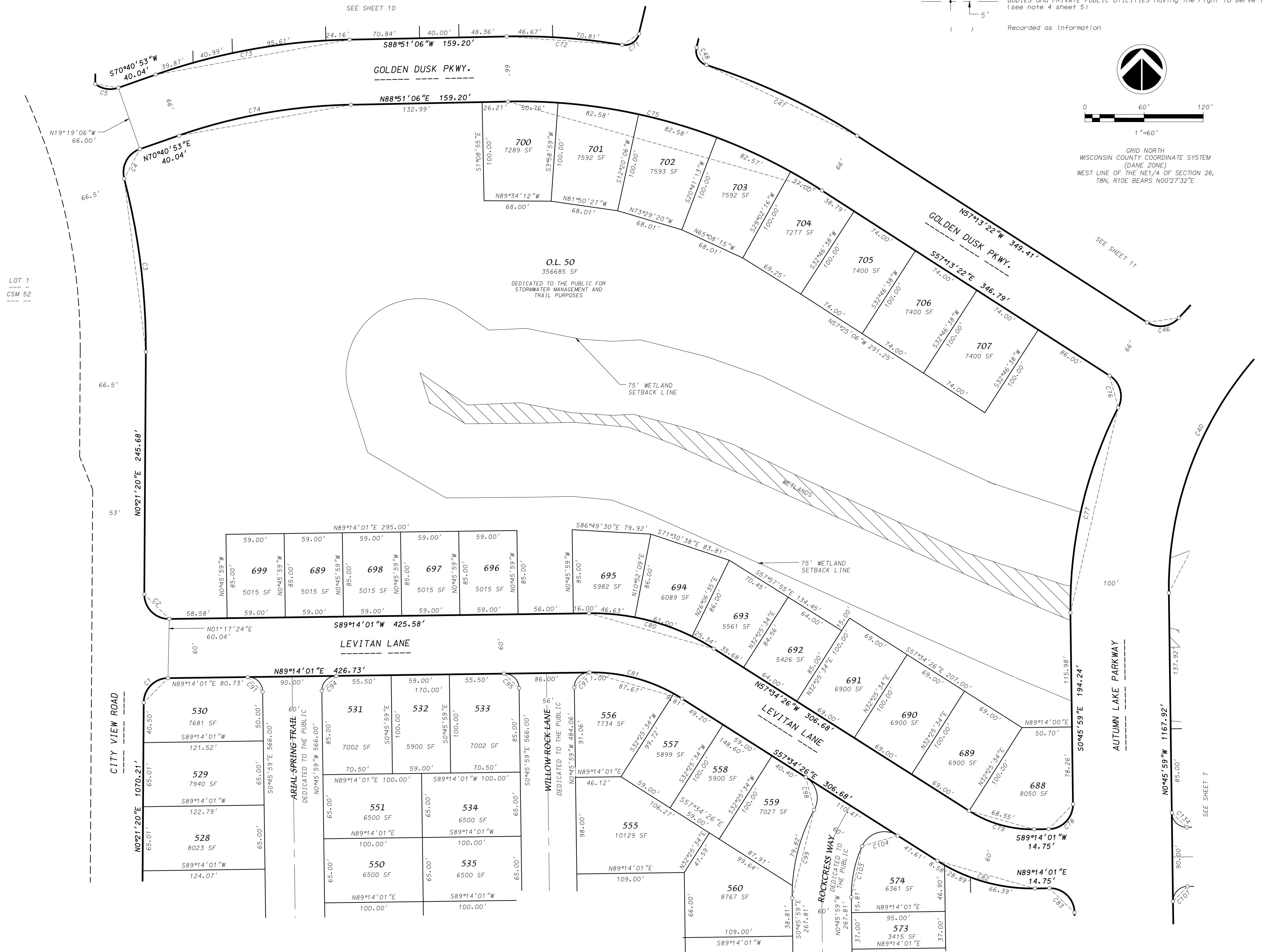


LEGEND

- Placed 1-1/4" x 18" solid round iron rebar stake, weighing 4.30 lbs/ft. All other lot and outlot corners are marked with 3/4" x 18" solid round iron rebar stakes, weighing 1.50 lbs/ft.
- Public utility easement (5' wide unless otherwise dimensioned). Utility easements as herein set forth are for the use of PUBLIC BODIES and PRIVATE PUBLIC UTILITIES having the right to serve the area. (see note 4 sheet 5)
- Recorded as information



GRID NORTH
WISCONSIN COUNTY COORDINATE SYSTEM
(DANE ZONE)
WEST LINE OF THE NE1/4 OF SECTION 26,
T8N, R10E BEARS N002°32'E



D'ONOFRIO KOTTKE AND ASSOCIATES, INC.

7530 Westward Way, Madison, WI 53717
Phone: 608.833.7530 • Fax: 608.833.1089

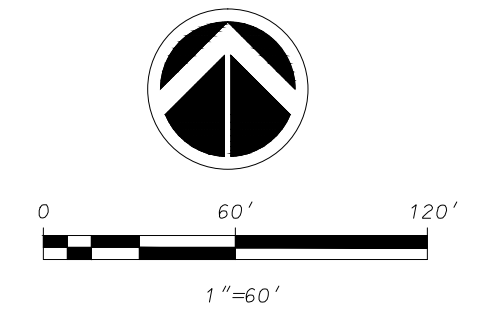
YOUR NATURAL RESOURCE FOR LAND DEVELOPMENT

FN:14-07-117

VILLAGE AT AUTUMN LAKE REPLAT

LOTS 1-519 AND OUTLOTS 1-15, OUTLOTS 18-39 AND VARIOUS DISCONTINUED ROADS WITHIN VILLAGE AT AUTUMN LAKE, LOCATED IN THE NE1/4, SW1/4, SE1/4 OF THE NW1/4, AND THE NE1/4, NW1/4, SW1/4 AND THE SE1/4 OF THE SW1/4, AND THE NW1/4 AND THE SW1/4 OF THE SE1/4 OF SECTION 26, T8N, R10E, CITY OF MADISON, DANE COUNTY, WISCONSIN

There are no objections to this plat with respect to Secs. 236.15, 236.16, 236.20 and 236.21(1) and (2), Wis. Stats. as provided by s. 236.12, Wis. Stats.
 Certified _____, 20____
 Department of Administration



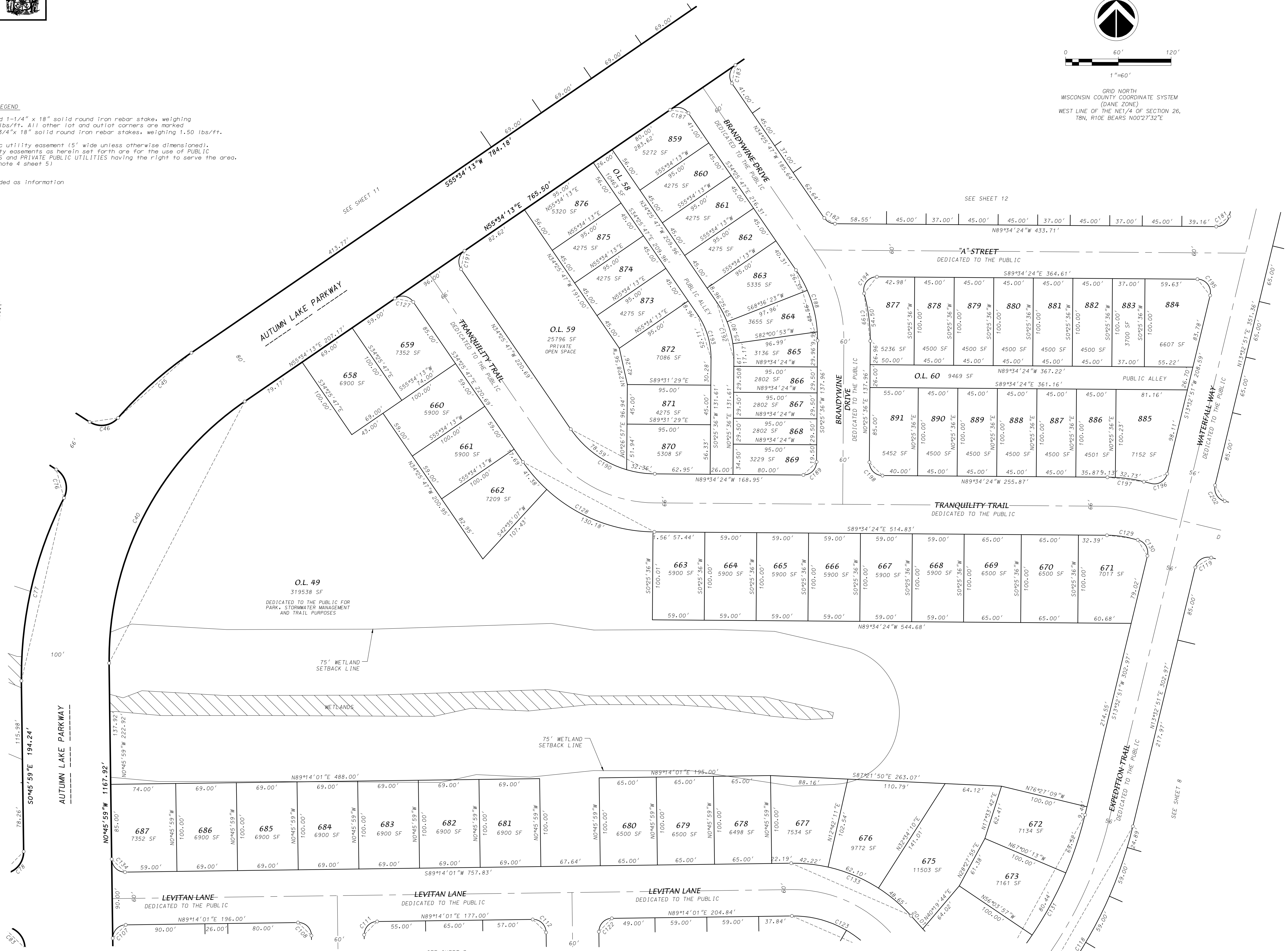
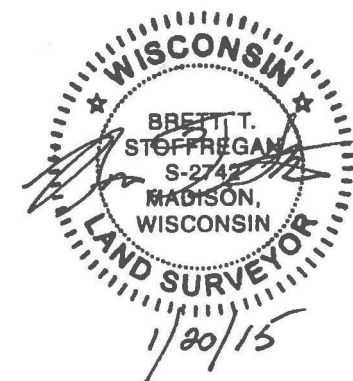
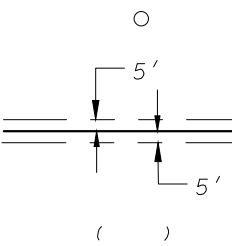
GRID NORTH
 WISCONSIN COUNTY COORDINATE SYSTEM
 (DANE ZONE)
 WEST LINE OF THE NE1/4 OF SECTION 26,
 T8N, R10E BEARS N00°27'32"E

LEGEND

Placed 1-1/4" x 18" solid round iron rebar stake, weighing 4.30 lbs/ft. All other lot and outlot corners are marked with 3/4" x 18" solid round iron rebar stakes, weighing 1.50 lbs/ft.

Public utility easement (5' wide unless otherwise dimensioned). Utility easements as herein set forth are for the use of PUBLIC BODIES and PRIVATE PUBLIC UTILITIES having the right to serve the area. (see note 4 sheet 5)

Recorded as Information



D'ONOFRIO KOTTKE AND ASSOCIATES, INC.
 7530 Westward Way, Madison, WI 53717
 Phone: 608.833.7530 • Fax: 608.833.1089
 YOUR NATURAL RESOURCE FOR LAND DEVELOPMENT

FN:14-07-117

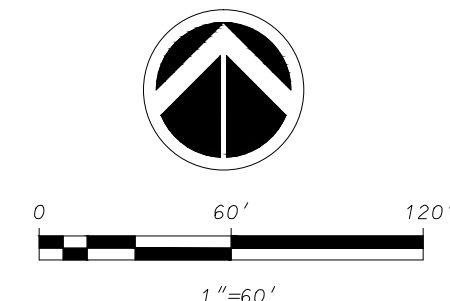
VILLAGE AT AUTUMN LAKE REPLAT

LOTS 1-519 AND OUTLOTS 1-15, OUTLOTS 18-39 AND VARIOUS DISCONTINUED ROADS WITHIN VILLAGE AT AUTUMN LAKE, LOCATED IN THE NE1/4, SW1/4, SE1/4 OF THE NW1/4, AND THE NE1/4, NW1/4, SW1/4 AND THE SE1/4 OF THE SW1/4, AND THE NW1/4 AND THE SW1/4 OF THE SE1/4 OF SECTION 26, T8N, R10E, CITY OF MADISON, DANE COUNTY, WISCONSIN

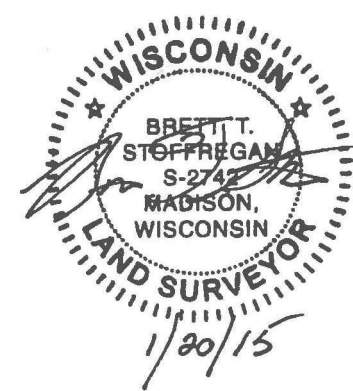
There are no objections to this plat with respect to Secs. 236.15, 236.16, 236.20 and 236.21(1) and (2), Wis. Stats. as provided by s. 236.12, Wis. Stats.

Certified _____, 20__

Department of Administration



GRID NORTH
WISCONSIN COUNTY COORDINATE SYSTEM
(DANE ZONE)
WEST LINE OF THE NE1/4 OF SECTION 26,
T8N, R10E BEARS N00°27'32"E



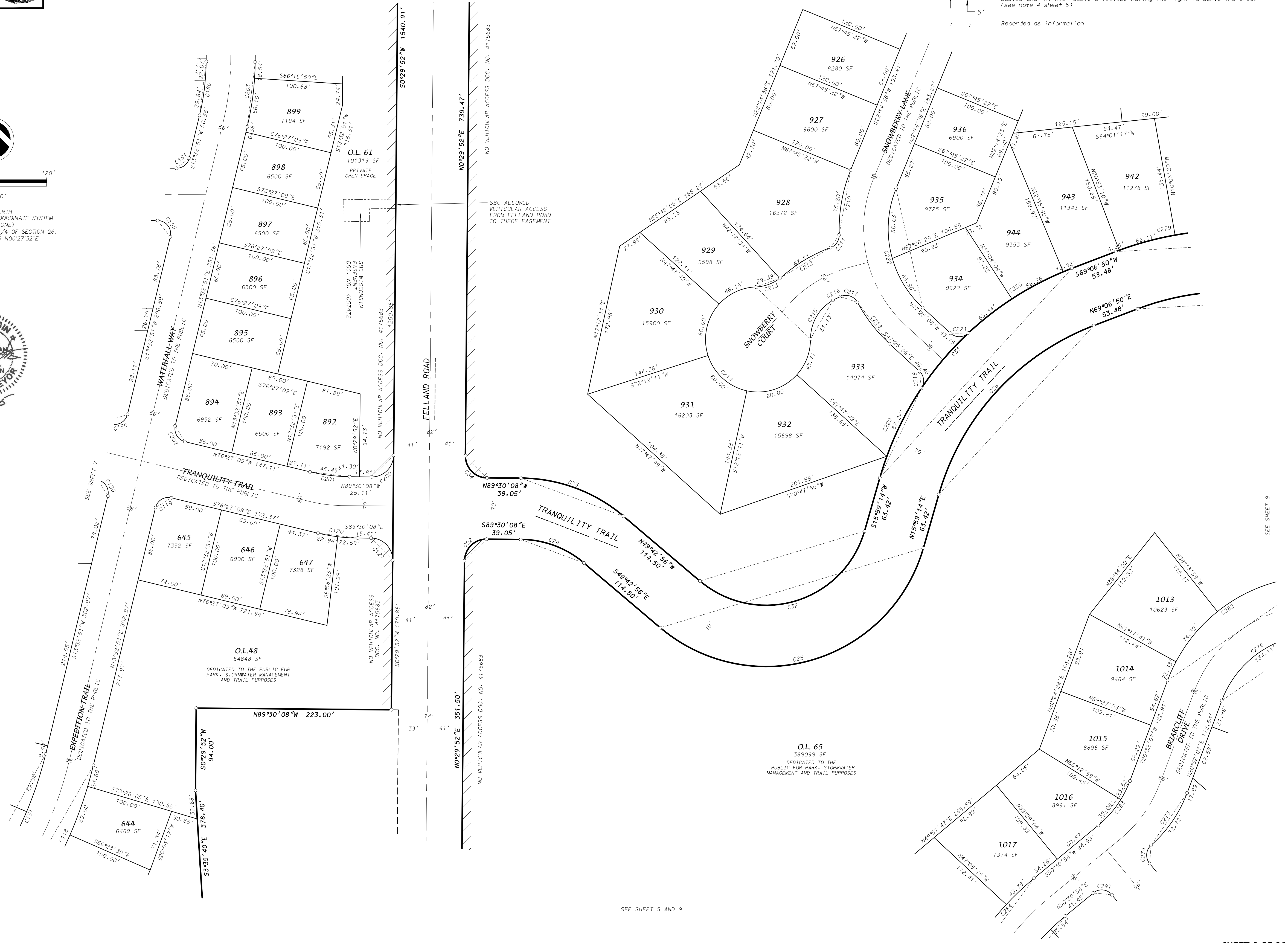
LEGEND

Placed 1-1/4" x 18" solid round iron rebar stake, weighing 4.30 lbs/ft. All other lot and outlot corners are marked with 3/4" x 18" solid round iron rebar stakes, weighing 1.50 lbs/ft.

Public utility easement (5' wide unless otherwise dimensioned). Utility easements as herein set forth are for the use of PUBLIC BODIES and PRIVATE PUBLIC UTILITIES having the right to serve the area. (see note 4 sheet 5)

Recorded as Information

SEE SHEET 13



SEE SHEET 9

SEE SHEET 5 AND 9

D'ONOFRIO KOTTKE AND ASSOCIATES, INC.

7530 Westward Way, Madison, WI 53717
Phone: 608.833.7530 • Fax: 608.833.1089

YOUR NATURAL RESOURCE FOR LAND DEVELOPMENT

FN:14-07-117

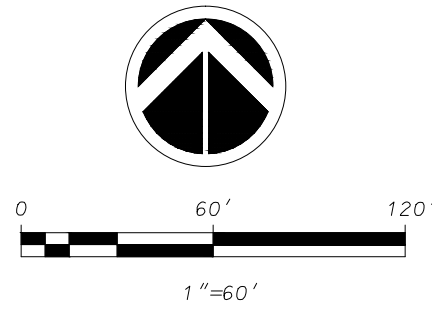
VILLAGE AT AUTUMN LAKE REPLAT

LOTS 1-519 AND OUTLOTS 1-15, OUTLOTS 18-39 AND VARIOUS DISCONTINUED ROADS WITHIN VILLAGE AT AUTUMN LAKE, LOCATED IN THE NE1/4, SW1/4, SE1/4 OF THE NW1/4, AND THE NE1/4, NW1/4, SW1/4 AND THE SE1/4 OF THE SW1/4, AND THE NW1/4 AND THE SW1/4 OF THE SE1/4 OF SECTION 26, T8N, R10E, CITY OF MADISON, DANE COUNTY, WISCONSIN

There are no objections to this plat with respect to Secs. 236.15, 236.16, 236.20 and 236.21(1) and (2), Wis. Stats. as provided by s. 236.12, Wis. Stats.

Certified _____, 20__

Department of Administration



GRID NORTH
WISCONSIN COUNTY COORDINATE SYSTEM
(DANE ZONE)
WEST LINE OF THE NE1/4 OF SECTION 26,
T8N, R10E BEARS N00°27'32"E

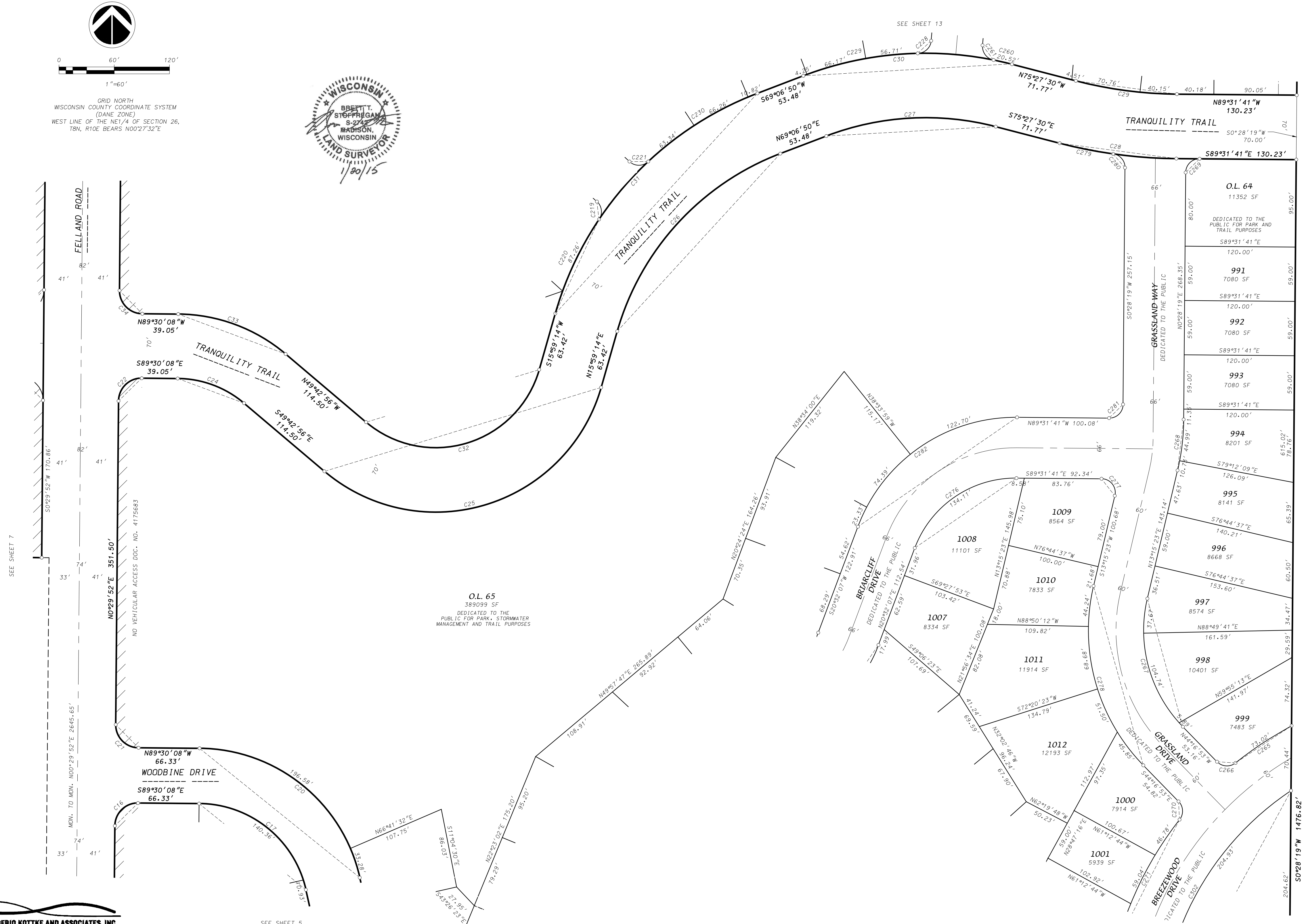


LEGEND

Placed 1-1/4" x 18" solid round iron rebar stake, weighing 4.30 lbs/ft. All other lot and outlot corners are marked with 3/4" x 18" solid round iron rebar stakes, weighing 1.50 lbs/ft.

Public utility easement (5' wide unless otherwise dimensioned). Utility easements as herein set forth are for the use of PUBLIC BODIES and PRIVATE PUBLIC UTILITIES having the right to serve the area. (see note 4 sheet 5)

Recorded as Information



D'ONOFRIO KOTTKE AND ASSOCIATES, INC.
7530 Westward Way, Madison, WI 53717
Phone: 608.833.7530 • Fax: 608.833.1089
YOUR NATURAL RESOURCE FOR LAND DEVELOPMENT

FN:14-07-117

SEE SHEET 5

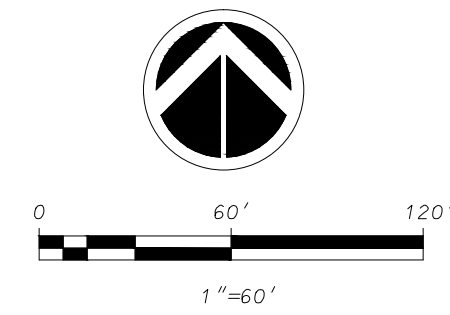
VILLAGE AT AUTUMN LAKE REPLAT

LOTS 1-519 AND OUTLOTS 1-15, OUTLOTS 18-39 AND VARIOUS DISCONTINUED ROADS WITHIN VILLAGE AT AUTUMN LAKE, LOCATED IN THE NE1/4, SW1/4, SE1/4 OF THE NW1/4, AND THE NE1/4, NW1/4, SW1/4 AND THE SE1/4 OF THE SW1/4, AND THE NW1/4 AND THE SW1/4 OF THE SE1/4 OF SECTION 26, T8N, R10E, CITY OF MADISON, DANE COUNTY, WISCONSIN

There are no objections to this plat with respect to Secs. 236.15, 236.16, 236.20 and 236.21(1) and (2), Wis. Stats. as provided by s. 236.12, Wis. Stats.

Certified _____, 20__

Department of Administration

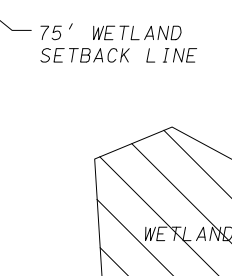


GRID NORTH
WISCONSIN COUNTY COORDINATE SYSTEM
(DANE ZONE)
WEST LINE OF THE NE1/4 OF SECTION 26,
T8N, R10E BEARS N00°27'32"E

LOT 53
HIGH CROSSING
5TH ADDITION

30' WIDE
PUBLIC BIKE
PATH EASEMENT
DOC. NO. 4175683

O.L. 53
654889 SF
DEDICATED TO THE PUBLIC FOR
STORMWATER MANAGEMENT, TRAIL
PUBLIC UTILITY EASEMENT
PURPOSES

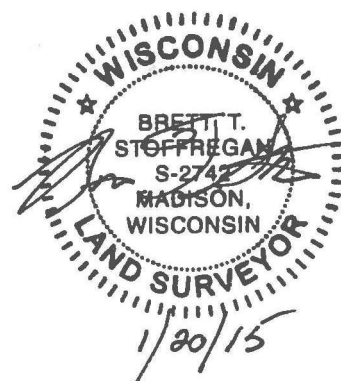


CITY VIEW ROAD

WISCONSIN AND SOUTHERN RAILROAD

GOLDEN DUSK PKWY.

MADISON IRIS
CIRCLE



LEGEND

Placed 1-1/4" x 18" solid round iron rebar stake, weighing 4.30 lbs/ft. All other lot and outlot corners are marked with 3/4" x 18" solid round iron rebar stakes, weighing 1.50 lbs/ft.

Public utility easement (5' wide unless otherwise dimensioned).
Utility easements as herein set forth are for the use of PUBLIC BODIES and PRIVATE PUBLIC UTILITIES having the right to serve the area. (see note 4 sheet 5)

Recorded as Information

D'ONOFRIO KOTTKE AND ASSOCIATES, INC.

7530 Westward Way, Madison, WI 53717
Phone: 608.833.7530 • Fax: 608.833.1089
YOUR NATURAL RESOURCE FOR LAND DEVELOPMENT

FN:14-07-117

VILLAGE AT AUTUMN LAKE REPLAT

LOTS 1-519 AND OUTLOTS 1-15, OUTLOTS 18-39 AND VARIOUS DISCONTINUED ROADS WITHIN VILLAGE AT AUTUMN LAKE, LOCATED IN THE NE1/4, SW1/4, SE1/4 OF THE NW1/4, AND THE NE1/4, NW1/4, SW1/4 AND THE SE1/4 OF THE SW1/4, AND THE NW1/4 AND THE SW1/4 OF THE SE1/4 OF SECTION 26, T8N, R10E, CITY OF MADISON, DANE COUNTY, WISCONSIN

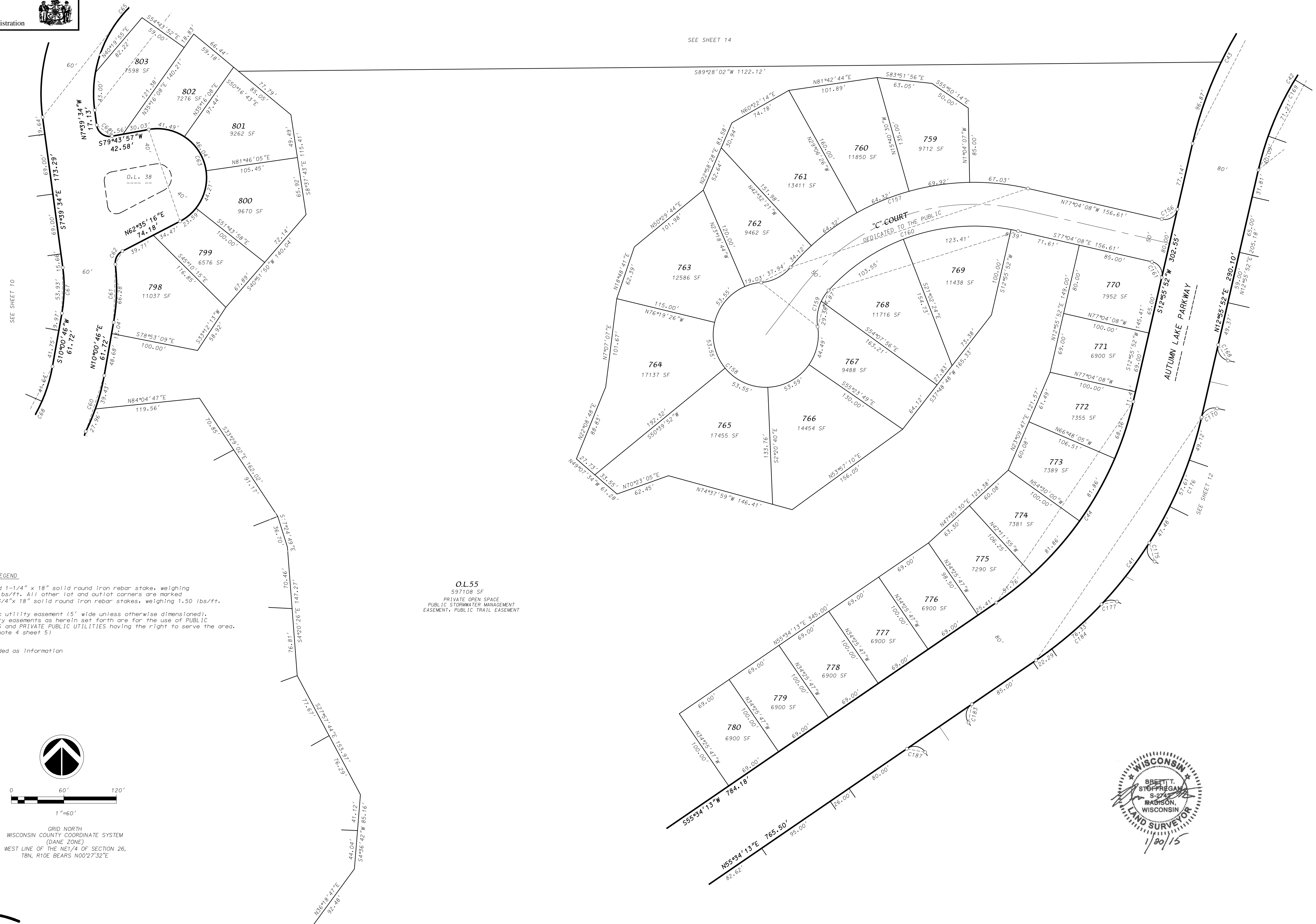
There are no objections to this plat with respect to Secs. 236.15, 236.16, 236.20 and 236.21(1) and (2), Wis. Stats. as provided by s. 236.12, Wis. Stats.

Certified _____, 20____

Department of Administration



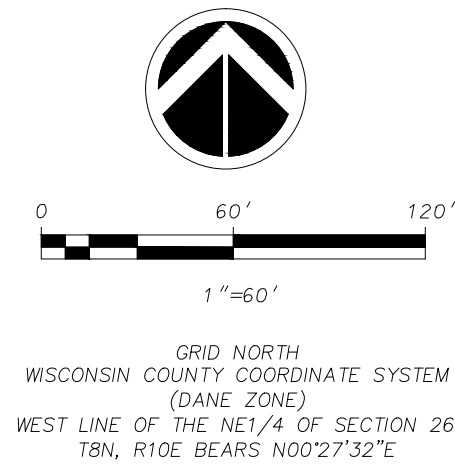
SEE SHEET 14



LEGEND

- Placed 1-1/4" x 18" solid round iron rebar stake, weighing 4.30 lbs/ft. All other lot and outlot corners are marked with 3/4" x 18" solid round iron rebar stakes, weighing 1.50 lbs/ft.
- Public utility easement (5' wide unless otherwise dimensioned). Utility easements as herein set forth are for the use of PUBLIC BODIES and PRIVATE UTILITIES having the right to serve the area. (see note 4 sheet 5)
- Recorded as information

O.L.55
597108 SF
PRIVATE OPEN SPACE
PUBLIC STORMWATER MANAGEMENT
EASEMENT, PUBLIC TRAIL EASEMENT



D'ONOFRIO KOTTKE AND ASSOCIATES, INC.

7530 Westward Way, Madison, WI 53717
Phone: 608.833.7530 • Fax: 608.833.1089

YOUR NATURAL RESOURCE FOR LAND DEVELOPMENT

FN:14-07-117

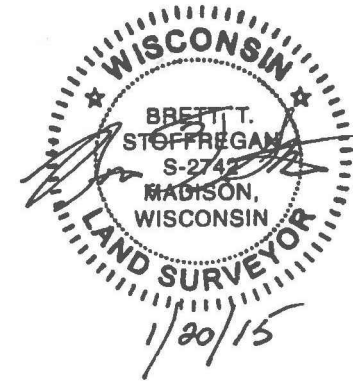
VILLAGE AT AUTUMN LAKE REPLAT

LOTS 1-519 AND OUTLOTS 1-15, OUTLOTS 18-39 AND VARIOUS DISCONTINUED ROADS WITHIN VILLAGE AT AUTUMN LAKE, LOCATED IN THE NE1/4, SW1/4, SE1/4 OF THE NW1/4, AND THE NE1/4, NW1/4, SW1/4 AND THE SE1/4 OF THE SW1/4, AND THE NW1/4 AND THE SW1/4 OF THE SE1/4 OF SECTION 26, T8N, R10E, CITY OF MADISON, DANE COUNTY, WISCONSIN

There are no objections to this plat with respect to Secs. 236.15, 236.16, 236.20 and 236.21(1) and (2), Wis. Stats. as provided by s. 236.12, Wis. Stats.

Certified _____, 20__

Department of Administration

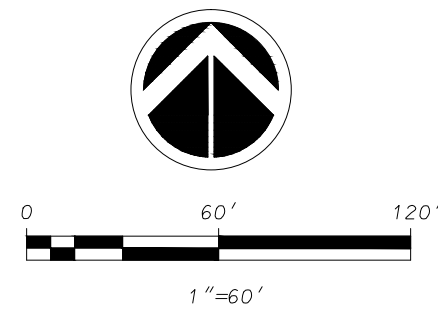
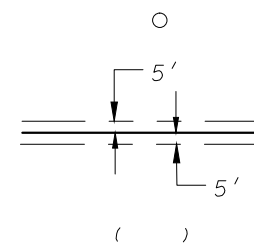


LEGEND

Placed 1-1/4" x 18" solid round iron rebar stake, weighing 4.30 lbs/ft. All other lot and outlot corners are marked with 3/4" x 18" solid round iron rebar stakes, weighing 1.50 lbs/ft.

Public utility easement (5' wide unless otherwise dimensioned). Utility easements as herein set forth are for the use of PUBLIC BODIES and PRIVATE PUBLIC UTILITIES having the right to serve the area. (see note 4 sheet 5)

Recorded as information



GRID NORTH
WISCONSIN COUNTY COORDINATE SYSTEM
(DANE ZONE)
WEST LINE OF THE NE1/4 OF SECTION 26,
T8N, R10E BEARS N00°27'52"E

D'ONOFRIO KOTTKE AND ASSOCIATES, INC.

7530 Westward Way, Madison, WI 53717
Phone: 608.833.7530 • Fax: 608.833.1089

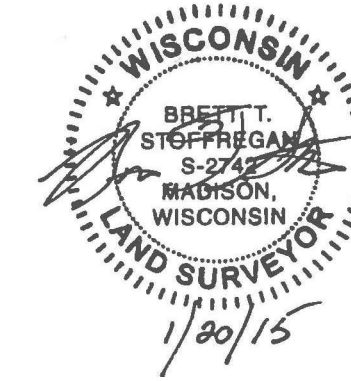
YOUR NATURAL RESOURCE FOR LAND DEVELOPMENT

FN:14-07-117



VILLAGE AT AUTUMN LAKE REPLAT

LOTS 1-519 AND OUTLOTS 1-15, OUTLOTS 18-39 AND VARIOUS DISCONTINUED ROADS WITHIN VILLAGE AT AUTUMN LAKE, LOCATED IN THE NE1/4, SW1/4, SE1/4 OF THE NW1/4, AND THE NE1/4, NW1/4, SW1/4 AND THE SE1/4 OF THE SW1/4, AND THE NW1/4 AND THE SW1/4 OF THE SE1/4 OF SECTION 26, T8N, R10E, CITY OF MADISON, DANE COUNTY, WISCONSIN



There are no objections to this plat with respect to Secs. 236.15, 236.16, 236.20 and 236.21(1) and (2), Wis. Stats. as provided by s. 236.12, Wis. Stats.

Certified _____, 20____

Department of Administration



CENTER
SEC. 26, T8N, R10E
FOUND BRASS CAP MONUMENT
WISCONSIN COUNTY COORDINATE
SYSTEM (DANE ZONE)
N: 502529.15
E: 849990.96

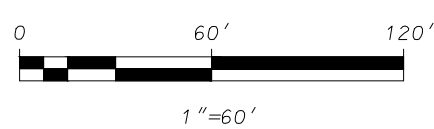
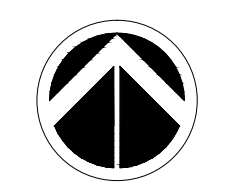
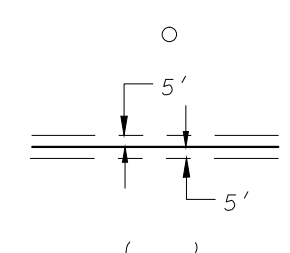
S88°18'52"W 176.97'
LANDS
N88°18'52"E 176.97'

O.L. 62
456550 SF
PRIVATE
OPEN SPACE

LEGEND

Placed 1-1/4" x 18" solid round iron rebar stake, weighing 4.30 lbs/ft. All other lot and outlot corners are marked with 3/4" x 18" solid round iron rebar stakes, weighing 1.50 lbs/ft.

Public utility easement (5' wide unless otherwise dimensioned). Utility easements as herein set forth are for the use of PUBLIC BODIES and PRIVATE PUBLIC UTILITIES having the right to serve the area. (see note 4 sheet 5)



GRID NORTH
WISCONSIN COUNTY COORDINATE SYSTEM
(DANE ZONE)
WEST LINE OF THE NE1/4 OF SECTION 26,
T8N, R10E BEARS N00°27'32"E

D'ONOFRIO KOTTKE AND ASSOCIATES, INC.
7530 Westward Way, Madison, WI 53717
Phone: 608.833.7530 • Fax: 608.833.1089
YOUR NATURAL RESOURCE FOR LAND DEVELOPMENT

SEE SHEET 9

VILLAGE AT AUTUMN LAKE REPLAT

LOTS 1-519 AND OUTLOTS 1-15, OUTLOTS 18-39 AND VARIOUS DISCONTINUED ROADS WITHIN VILLAGE AT AUTUMN LAKE, LOCATED IN THE NE1/4, SW1/4, SE1/4 OF THE NW1/4, AND THE NE1/4, NW1/4, SW1/4 AND THE SE1/4 OF THE SW1/4, AND THE NW1/4 AND THE SW1/4 OF THE SE1/4 OF SECTION 26, T8N, R10E, CITY OF MADISON, DANE COUNTY, WISCONSIN

There are no objections to this plat with respect to Secs. 236.15, 236.16, 236.20 and 236.21(1) and (2), Wis. Stats. as provided by s. 236.12, Wis. Stats.

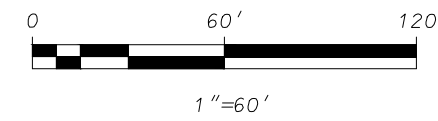
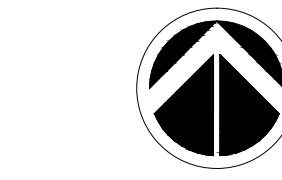
Certified _____, 20__

Department of Administration

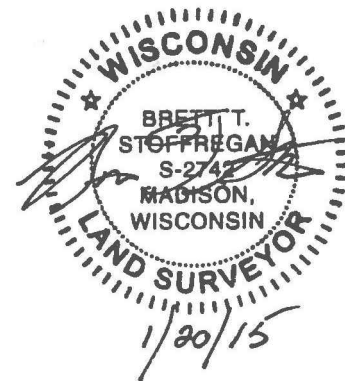


LEGEND

- Placed 1-1/4" x 18" solid round iron rebar stake, weighing 4.30 lbs/ft. All other lot and outlot corners are marked with 3/4" x 18" solid round iron rebar stakes, weighing 1.50 lbs/ft.
- Public utility easement (5' wide unless otherwise dimensioned).
- Utility easements as herein set forth are for the use of PUBLIC BODIES and PRIVATE PUBLIC UTILITIES having the right to serve the area. (see note 4 sheet 5)
- Recorded as Information



GRID NORTH
WISCONSIN COUNTY COORDINATE SYSTEM
(DANE ZONE)
WEST LINE OF THE NE1/4 OF SECTION 26,
T8N, R10E BEARS N00°27'32"E



SEE SHEET 10

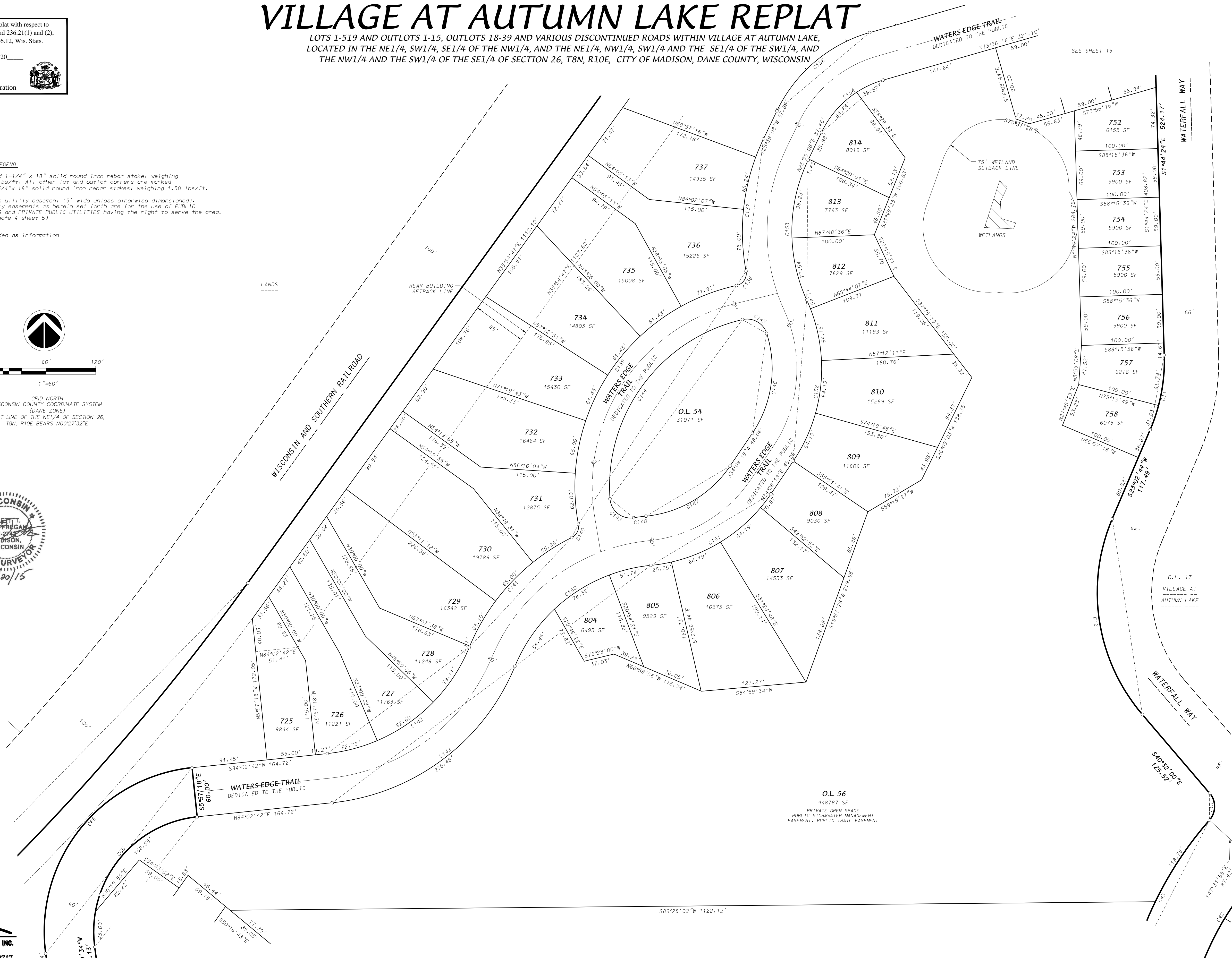
SEE SHEET 11

SEE SHEET 12

SHEET 14 OF 20

D'ONOFRIO KOTTKE AND ASSOCIATES, INC.
7530 Westward Way, Madison, WI 53717
Phone: 608.833.7530 • Fax: 608.833.1089
YOUR NATURAL RESOURCE FOR LAND DEVELOPMENT

FN:14-07-117



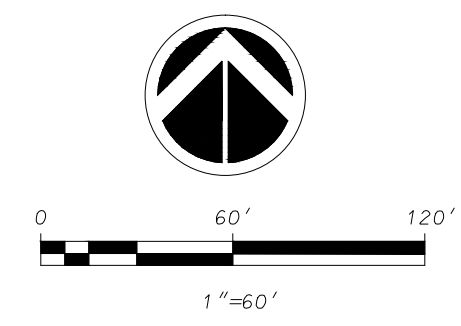
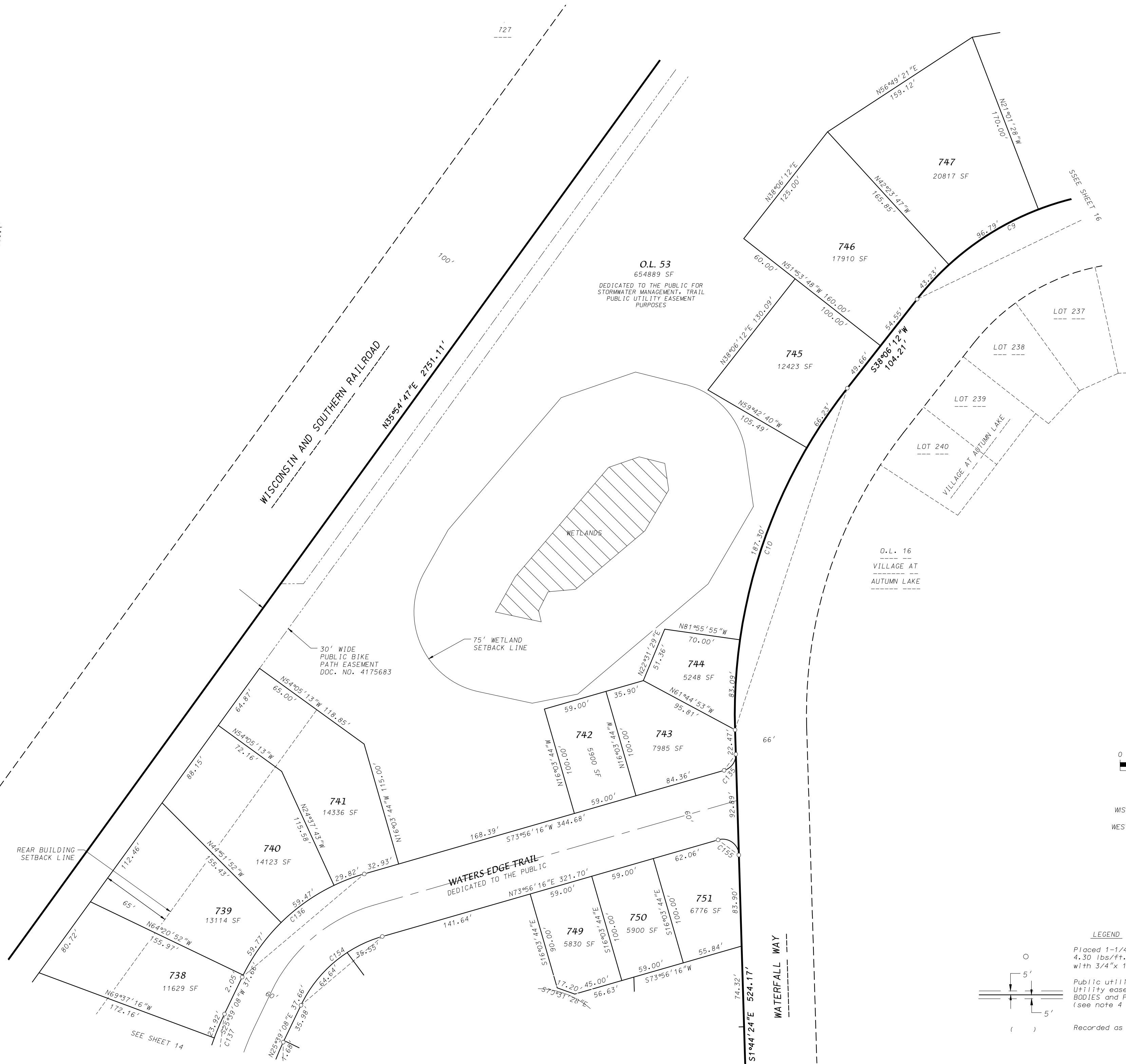
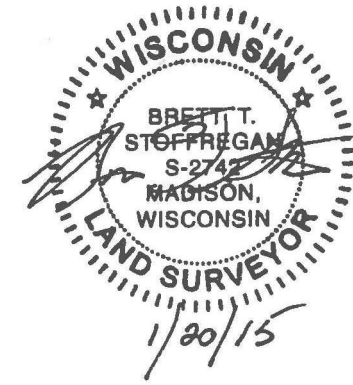
VILLAGE AT AUTUMN LAKE REPLAT

LOTS 1-519 AND OUTLOTS 1-15, OUTLOTS 18-39 AND VARIOUS DISCONTINUED ROADS WITHIN VILLAGE AT AUTUMN LAKE, LOCATED IN THE NE1/4, SW1/4, SE1/4 OF THE NW1/4, AND THE NE1/4, NW1/4, SW1/4 AND THE SE1/4 OF THE SW1/4, AND THE NW1/4 AND THE SW1/4 OF THE SE1/4 OF SECTION 26, T8N, R10E, CITY OF MADISON, DANE COUNTY, WISCONSIN

There are no objections to this plat with respect to Secs. 236.15, 236.16, 236.20 and 236.21(1) and (2), Wis. Stats. as provided by s. 236.12, Wis. Stats.

Certified _____, 20__

Department of Administration



GRID NORTH
WISCONSIN COUNTY COORDINATE SYSTEM
(DANE ZONE)
WEST LINE OF THE NE1/4 OF SECTION 26,
T8N, R10E BEARS N00°27'32\"/>

LEGEND

- Placed 1-1/4" x 18" solid round iron rebar stake, weighing 4.30 lbs/ft. All other lot and outlot corners are marked with 3/4" x 18" solid round iron rebar stakes, weighing 1.50 lbs/ft.
- Public utility easement (5' wide unless otherwise dimensioned). Utility easements as herein set forth are for the use of PUBLIC BODIES and PRIVATE PUBLIC UTILITIES having the right to serve the area. (see note 4 sheet 5)
- Recorded as information

D'ONOFRIO KOTTKE AND ASSOCIATES, INC.

7530 Westward Way, Madison, WI 53717
Phone: 608.833.7530 • Fax: 608.833.1089

YOUR NATURAL RESOURCE FOR LAND DEVELOPMENT

FN:14-07-117

VILLAGE AT AUTUMN LAKE REPLAT

LOTS 1-519 AND OUTLOTS 1-15, OUTLOTS 18-39 AND VARIOUS DISCONTINUED ROADS WITHIN VILLAGE AT AUTUMN LAKE, LOCATED IN THE NE1/4, SW1/4, SE1/4 OF THE NW1/4, AND THE NE1/4, NW1/4, SW1/4 AND THE SE1/4 OF THE SW1/4, AND THE NW1/4 AND THE SW1/4 OF THE SE1/4 OF SECTION 26, T8N, R10E, CITY OF MADISON, DANE COUNTY, WISCONSIN

There are no objections to this plat with respect to Secs. 236.15, 236.16, 236.20 and 236.21(1) and (2), Wis. Stats. as provided by s. 236.12, Wis. Stats.

Certified _____, 20____



Department of Administration

NOTES

1. This Plat is subject to the following recorded instruments:

- Declaration of Conditions and Covenants recorded as Doc. Nos. 4195254, 4195255, 4209500, 4209501 and 4255053.
- Declaration of Conditions, Covenants and Restrictions recorded as Doc. Nos. 4195256.
- Lease recorded as Doc. No. 5102252.
- Public Sanitary Sewer Easements, Public Water Main Easements, Public Storm Sewer Easements, Public Storm Water and Conveyance, recorded as Doc. No. 4175683, released by Doc. No. _____.
- Public Utility Easements recorded as Doc. No. 4175683, released by Doc. No. _____.
- Access Easements for Ingress/Egress to a public alley recorded by Doc. No. 4175683 released by Doc. No. _____.
- Landscape Buffers recorded as Doc. No. 4175683 partially released by Doc. No. _____.
- Release of Secondary unit permit recorded as Doc. No. 4175683 released by Doc. No. _____.

2. All lots within this plat are subject to public easements for drainage purposes which shall be a minimum of 5 feet in width measured from the property line to the interior of each lot except that the easements shall be 12 feet in width on the perimeter of the plat. For purposes of two (2) or more lots combined for a single development site, or where two (2) or more lots have a shared driveway agreement, the public easement for drainage purposes shall be a minimum of five (5) feet in width and shall be measured only from the exterior property lines of the combined lots that create a single development site, or have a shared driveway agreement, except that the easement shall be twelve (12) feet in width along the perimeter of the plat. Easements shall not be required on property lines shared with greenways or public streets. No buildings, driveways, or retaining walls shall be placed in any easement for drainage purposes. Fences may be placed in the easement only if they do not impede the anticipated flow of water.

The intra-block drainage easements shall be graded with the construction of each principle structure in accordance with the approved storm water drainage plan on file with the City Engineer and the Zoning Administrator, as amended in accordance with the Madison General Ordinances.

Note: In the event of a City of Madison Plan Commission and/or Common Council approved redivision of a previously subdivided property, the underlying public easements for drainage purposes are released and replaced by those required and created by the current approved subdivision.

3. Outlot Designation

- Dedicated to the Public for Park purposes
- Dedicated to the Public for Alley purposes
- Dedicated to the Public for Alley purposes
- Dedicated to the Public for Alley purposes
- Private Open Space
- Private Alley
- Dedicated to the Public for Park and Open Space Purposes.
- Dedicated to the Public for Park, Stormwater Management and Trail purposes
- Dedicated to the Public for Park, Stormwater Management and Trail purposes
- Dedicated to the Public for Stormwater Management and Trail purposes
- Private Alley
- Private Alley
- Dedicated to the Public for Stormwater Management, Trail and Public Utility Easement purposes
- Private Open Space
- Private Open Space, Public Stormwater Management Easement and Public Trail Easement
- Private Open Space, Public Stormwater Management Easement and Public Trail Easement
- Dedicated to the Public for Alley purposes
- Dedicated to the Public for Alley purposes
- Private Open Space
- Dedicated to the Public for Alley purposes
- Private Open Space
- Private Open Space
- Private Open Space
- Dedicated to the Public for Park and Trail purposes
- Dedicated to the Public for Park, Stormwater Management and Trail purposes
- Dedicated to the Public for Park, Open Space and Stormwater Management purposes
- Private Open Space

4. Subsoil information indicates that basements of structures within the plat may encounter bedrock. The sub-surface conditions report, dated March 8, 2001 and August 21, 2001, is on file with the City Engineer.

5. As the date of Plat recordation there is an active quarry operation on the lands located East of this Plat.

6. All streets / roads lying within the plat boundary are dedicated to the public unless otherwise noted.

7. A 40 foot building setback is required along Lein Road. The City Engineer may reduce the building setback to 30 feet if a noise analysis is completed using traffic volumes at full build-out, and the City Engineer determines the noise values are acceptable at the 30 foot distance.

8. The City will not install lighting in the alleys, but the developer or property owners may request the City to approve a private light(s) in the alley right-of-way. Such private light(s) to be operated and maintained by the private interests.

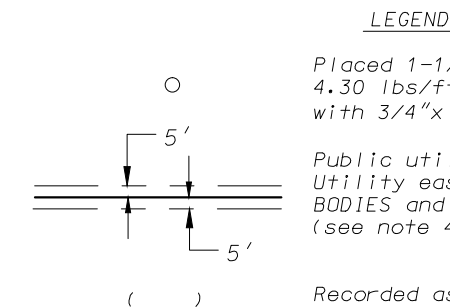
9. Lots/buildings within this subdivision are subject to impact fees that are due and payable at the time building permit(s) are issued.

10. There shall be no vehicular access to Felland Road except from Waterfall Way, Autumn Lake Parkway, Tranquility Trail and Woodbine Drive.

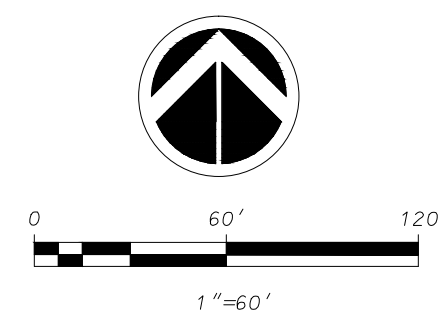
11. There shall be no vehicular access to Lein Road except from City View Road and Autumn Lake Parkway.

12. Distances, lengths and widths are measured to the nearest hundredth of a foot.

13. Distances shown along curves are chord lengths.



LOT 2
CSM 5727



GRID NORTH
WISCONSIN COUNTY COORDINATE SYSTEM
(DANE ZONE)
WEST LINE OF THE NE1/4 OF SECTION 26,
T8N, R10E BEARS N00°27'32"E

D'ONOFRIO KOTTKE AND ASSOCIATES, INC.

7530 Westward Way, Madison, WI 53717
Phone: 608.833.7530 • Fax: 608.833.1089

YOUR NATURAL RESOURCE FOR LAND DEVELOPMENT

FN:14-07-117

VILLAGE AT AUTUMN LAKE REPLAT

LOTS 1-519 AND OUTLOTS 1-15, OUTLOTS 18-39 AND VARIOUS DISCONTINUED ROADS WITHIN VILLAGE AT AUTUMN LAKE,
LOCATED IN THE NE1/4, SW1/4, SE1/4 OF THE NW1/4, AND THE NE1/4, NW1/4, SW1/4 AND THE SE1/4 OF THE SW1/4, AND
THE NW1/4 AND THE SW1/4 OF THE SE1/4 OF SECTION 26, T8N, R10E, CITY OF MADISON, DANE COUNTY, WISCONSIN

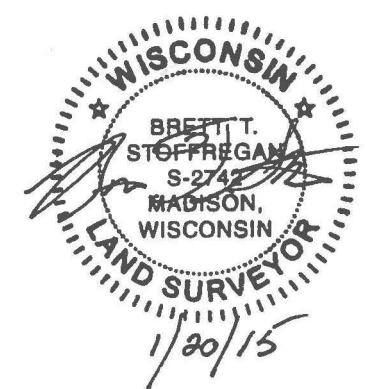
There are no objections to this plat with respect to
Secs. 236.15, 236.16, 236.20 and 236.21(1) and (2),
Wis. Stats. as provided by s. 236.12, Wis. Stats.

Certified _____, 20____



Department of Administration

CURVE TABLE



D'ONOFRIO KOTTKE AND ASSOCIATES, INC.

7530 Westward Way, Madison, WI 53717
Phone: 608.833.7530 • Fax: 608.833.1089

YOUR NATURAL RESOURCE FOR LAND DEVELOPMENT

FN:14-07-117

VILLAGE AT AUTUMN LAKE REPLAT

LOTS 1-519 AND OUTLOTS 1-15, OUTLOTS 18-39 AND VARIOUS DISCONTINUED ROADS WITHIN VILLAGE AT AUTUMN LAKE,
LOCATED IN THE NE1/4, SW1/4, SE1/4 OF THE NW1/4, AND THE NE1/4, NW1/4, SW1/4 AND THE SE1/4 OF THE SW1/4, AND
THE NW1/4 AND THE SW1/4 OF THE SE1/4 OF SECTION 26, T8N, R10E, CITY OF MADISON, DANE COUNTY, WISCONSIN

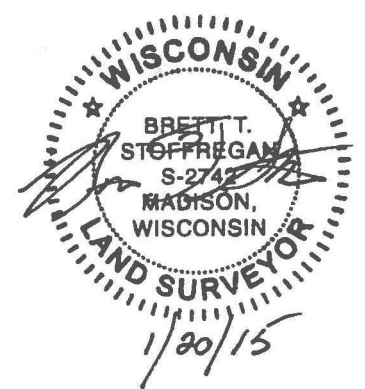
There are no objections to this plat with respect to
Secs. 236.15, 236.16, 236.20 and 236.21(1) and (2),
Wis. Stats. as provided by s. 236.12, Wis. Stats.

Certified _____, 20__



Department of Administration

CURVE TABLE



D'ONOFRIO KOTTKE AND ASSOCIATES, INC.

7530 Westward Way, Madison, WI 53717
Phone: 608.833.7530 • Fax: 608.833.1089

YOUR NATURAL RESOURCE FOR LAND DEVELOPMENT

FN:14-07-117

There are no objections to this plat with respect to Secs. 236.15, 236.16, 236.20 and 236.21(1) and (2), Wis. Stats. as provided by s. 236.12, Wis. Stats.

Certified _____, 20____



Department of Administration

VILLAGE AT AUTUMN LAKE REPLAT

LOTS 1-519 AND OUTLOTS 1-15, OUTLOTS 18-39 AND VARIOUS DISCONTINUED ROADS WITHIN VILLAGE AT AUTUMN LAKE, LOCATED IN THE NE1/4, SW1/4, SE1/4 OF THE NW1/4, AND THE NE1/4, NW1/4, SW1/4 AND THE SE1/4 OF THE SW1/4, AND THE NW1/4 AND THE SW1/4 OF THE SE1/4 OF SECTION 26, T8N, R10E, CITY OF MADISON, DANE COUNTY, WISCONSIN

LEGAL DESCRIPTION

I, Brett T. Stoffregan, Registered Land Surveyor S-2742 do hereby certify that in full compliance with the provisions of Chapter 236 of the Wisconsin State Statutes and the Subdivision Regulations of the City of Madison, and under the direction of the owners listed below, I have surveyed, divided and mapped "Autumn Lake Replat" and that such plat correctly represents all the exterior boundaries and the subdivision of the land surveyed as is described as follows:

Lots 1-519, Outlots 1-15 and Outlots 18-39, Village at Autumn Lake and various discontinued roads, located in the NE1/4, SW1/4, SE1/4 OF THE NW1/4, AND THE NE1/4, NW1/4, SW1/4, SE1/4 OF THE SW1/4 AND THE SE1/4 OF THE SW1/4 OF SECTION 26, T8N, R10E, City of Madison, Dane County, Wisconsin to-wit:

Commencing at the Southwest corner of said Section 26; thence N89°14'01"E, 79.56 feet along the South line of said SW1/4; thence N00°45'59"W, 54.00 feet to the North right-of-way line of Lein Road also being a point of curve and the point of beginning; thence Northwesterly along a curve to the right which has a radius of 25.00 feet and a chord which bears N45°12'19.5"W, 35.70 feet to a point on the Easterly right-of-way line of City View Road; thence N00°21'20"E, 1070.21 feet along said Easterly right-of-way line to a point of curve; thence Northwesterly along a curve to the right which has a radius of 25.00 feet and a chord which bears N44°47'40.5"E, 35.01 feet to a point on the South right-of-way line of Levitan Lane; thence N01°17'24"E, 60.04 feet to a point on the North right-of-way line of said Levitan Lane also being a point of curve; thence Northwesterly along a curve to the right which has a radius of 25.00 feet and a chord which bears N45°12'19"W, 35.70 feet to a point on the Easterly right-of-way line of said City View Road; thence N00°21'20"E, 245.68 feet along said Easterly right-of-way line to a point of curve; thence Northerly along a curve to the left which has a radius of 680.00 feet and a chord which bears N07°07'19"W, 176.99 feet along said Easterly right-of-way line to a point of reverse curve; thence Northeasterly along a curve to the right which has a radius of 25.00 feet and a chord which bears N28°02'27.5"E, 33.87 feet to a point on the South right-of-way line of Golden Dusk Parkway; thence N19°19'06"W, 66.00 feet to a point on the North right-of-way line of said Golden Dusk Parkway also being a point of curve; thence Westerly along a curve to the right which has a radius of 25.00 feet and a chord which bears N80°57'01.5"W, 23.76 feet; thence N00°21'20"E, 381.02 feet to a point on the Southeastery right-of-way line of a Wisconsin and Southern Railroad; thence N52°47'42"E, 482.21 feet along said Southeastery right-of-way line to a point of curve; thence Northeasterly along a curve to the left which has a radius of 2914.93 feet and a chord which bears N44°21'14.5"E, 855.77 feet; thence N35°54'47"E, 2751.11 feet along said Southeastery right-of-way line to a point on the Southerly right-of-way line of Burke Road; thence N89°33'55"E, 4.10 feet along said Southerly right-of-way line to a point of curve; thence Southeastery along a curve to the right which has a radius of 25.00 feet and a chord which bears S44°59'16.5"E, 35.63 feet to a point on the West right-of-way line of Felland Road; thence S00°27'32"W, 881.96 feet along said West right-of-way line to a point of curve; thence Southeastery along a curve to the right which has a radius of 25.00 feet and a chord which bears S45°27'32"W, 35.36 feet to a point on the Northerly right-of-way line of Waterfall Way; thence N89°32'28"W, 139.77 feet along said Northerly right-of-way line to a point of curve; thence Southwesterly along the Northwesterly right-of-way line of said Waterfall Way on a curve to the left which has a radius of 261.00 feet and a chord which bears S64°16'52"W, 230.28 feet; thence S38°06'12"W, 104.21 feet along said Northwesterly right-of-way line to a point of curve; thence Southwesterly along the Westerly right-of-way line of said Waterfall Way on a curve to the left which has a radius of 486.00 feet and a chord which bears S18°10'54"W, 331.19 feet to a point on the Westerly right-of-way line of said Waterfall Way; thence S01°44'24"E, 524.17 feet along said Westerly right-of-way line to a point of curve; thence Southerly along said Westerly right-of-way line on a curve to the right which has a radius of 215.00 feet and a chord which bears S10°39'10"W, 92.28 feet; thence S23°02'44"W, 117.49 feet along said Westerly right-of-way line to a point of curve; thence Southerly along said Westerly right-of-way line on a curve to the left which has a radius of 228.00 feet and a chord which bears S89°44'12"E, 240.22 feet; thence S40°32'00"E, 126.52 feet along said Westerly right-of-way line to a point of curve; thence Southerly along a curve to the right which has a radius of 25.00 feet and a chord which bears S00°23'16.5"W, 32.75 feet to a point on the Northerly right-of-way line of Autumn Lake Parkway; thence S47°31'55"E, 87.42 feet to a point on the Southerly right-of-way line of Autumn Lake Parkway also being a point of curve; thence Easterly along said Southerly right-of-way line on a curve to the right which has a radius of 350.00 feet and a chord which bears N67°01'32"E, 278.38 feet; thence S89°32'28"E, 111.09 feet along said Southerly right-of-way line to a point of curve; thence Southeastery along a curve to the right which has a radius of 25.00 feet and a chord which bears S44°32'28"E, 35.36 feet to a point on the Westerly right-of-way line of Felland Road; thence S00°27'32"W, 117.67 feet along said Westerly right-of-way line; thence N89°28'02"E, 41.01 feet to the Center of Section 26, T8N, R10E; thence N89°45'04"E, 41.00 feet along the North line of said SE1/4 to the Easterly right-of-way line of Felland Road; thence N89°45'04"E, 1276.86 feet along said North line; thence S00°28'19"W, 2591.45 feet to the Northerly right-of-way line of Lein Road; thence S89°44'34"W, 704.97 feet along said Northerly right-of-way line to a point of curve; thence Westerly along said Northerly right-of-way line on a curve to the right which has a radius of 2500.00 feet and a chord which bears N88°49'48.5"W, 124.52 feet; thence N87°24'11"W, 234.18 feet along said Northerly right-of-way line; thence N00°29'52"E, 61.23 feet; thence S89°44'34"W, 214.50 feet to the Easterly right-of-way line of Felland Road; thence N00°29'52"E, 215.81 feet along said Easterly right-of-way line to a point on the Southerly line of Lot 1; Certified Survey Map No. 3085; thence N89°44'12"E, 149.00 feet along said Southerly line to the Southeast corner of said Lot 1; thence N00°29'52"E, 165.00 feet along the Easterly line and to the Northeast corner of said Lot 1; thence S89°44'12"W, 149.00 feet along the Northerly line of said Lot 1 to the Easterly line of Felland Road; thence N00°29'52"E, 302.00 feet along said Easterly right-of-way line to a point of curve; thence Northerly along a curve to the right which has a radius of 25.00 feet and a chord which bears N45°29'52"E, 35.36 feet to a point of the Southerly right-of-way line of Woodbine Drive; thence S89°30'08"E, 66.33 feet along said Southerly right-of-way line to a point of curve; thence Southeastery along said Southerly right-of-way line on a curve to the right which has a radius of 120.00 feet and a chord which bears S51°06'02"E, 149.08 feet; thence S12°41'56"E, 36.34 feet along said Southerly right-of-way line to a point of curve; thence Southeastery along said Southerly right-of-way line on a curve to the left which has a radius of 180.00 feet and a chord which bears S40°09'27"E, 166.00 feet; thence S67°36'58"E, 87.79 feet along said Southerly right-of-way line; thence N22°23'02"E, 60.00 feet to the Northerly right-of-way line of Woodbine Drive; thence N67°36'58"W, 87.79 feet along said Northerly right-of-way line to a point of curve; thence Northwesterly along said Northerly right-of-way line on a curve to the right which has a radius of 120.00 feet and a chord which bears N40°09'27"W, 110.67 feet; thence N12°41'56"W, 36.34 feet along said Northerly right-of-way line to a point of curve; thence Northwesterly along said Northerly right-of-way line on a curve to the left which has a radius of 180.00 feet and a chord which bears N51°06'02"W, 223.62 feet; thence N89°30'08"W, 66.33 feet along said Northerly right-of-way line to a point of curve; thence Northwesterly along a curve to the right which has a radius of 25.00 feet and a chord which bears N44°30'08"W, 35.36 feet to the Easterly right-of-way line of Felland Road; thence N00°29'52"E, 351.50 feet along said Easterly right-of-way line to a point of curve; thence Northeasterly along a curve to the right which has a radius of 25.00 feet and a chord which bears N45°29'51"E, 35.36 feet to the Southerly right-of-way line of Tranquility Trail; thence S89°30'08"E, 39.05 feet along said Southerly right-of-way line to a point of curve; thence Easterly along said Southerly right-of-way line on a curve to the right which has a radius of 113.00 feet and a chord which bears S89°33'36"E, 126.90 feet; thence S49°42'16"E, 114.50 feet along said Southerly right-of-way line to a point of curve; thence Easterly along said Southerly right-of-way line on a curve to the left which has a radius of 187.00 feet and a chord which bears N73°08'09"E, 314.19 feet; thence N15°59'14"E, 63.42 feet along said Southerly right-of-way line to a point of curve; thence Northeasterly along said Southerly right-of-way line on a curve to the right which has a radius of 293.00 feet and a chord which bears N42°33'02"E, 262.05 feet; thence N69°06'50"E, 53.48 feet along said Southerly right-of-way line to a point of curve; thence Easterly along said Southerly right-of-way line on a curve to the right which has a radius of 303.00 feet and a chord which bears N86°49'40"E, 184.38 feet; thence S75°27'30"E, 71.77 feet along said Southerly right-of-way line to a point of curve; thence Easterly along said Southerly right-of-way line on a curve to the left which has a radius of 522.00 feet and a chord which bears S82°29'36"E, 127.86 feet; thence S89°31'41"E, 130.23 feet along said Southerly right-of-way line; thence N00°28'19"E, 70.00 feet to the Northerly right-of-way line of Tranquility Trail; thence N89°31'41"W, 130.23 feet along said Northerly right-of-way line to a point of curve; thence Westerly along said Northerly right-of-way on a curve to the right which has a radius of 452.00 feet and a chord which bears N82°29'36"W, 110.72 feet; thence N75°27'30"W, 71.77 feet along said Northerly right-of-way to a point of curve; thence Westerly along said Northerly right-of-way on a curve to the left which has a radius of 373.00 feet and a chord which bears S86°49'40"W, 226.98 feet; thence S69°06'50"W, 53.48 feet along said Northerly right-of-way line to a point of curve; thence Southwesterly along said Northerly right-of-way line on a curve to the left which has a radius of 363.00 feet and a chord which bears S42°33'02"W, 324.66 feet; thence S15°59'14"W, 63.42 feet along said Northerly right-of-way line to a point of curve; thence Westerly along said Northerly right-of-way on a curve to the right which has a radius of 117.00 feet and a chord which bears S73°08'09"W, 106.58 feet; thence N49°42'56"W, 114.50 feet along said Northerly right-of-way line to a point of curve; thence Northwesterly along said Northerly right-of-way line on a curve to the left which has a radius of 183.00 feet and a chord which bears N69°36'32"W, 124.54 feet; thence N89°30'08"W, 39.05 feet along said Northerly right-of-way line to a point of curve; thence Northwesterly along a curve to the right which has a radius of 25.00 feet and a chord which bears N44°30'08"W, 35.36 feet to the Easterly right-of-way line of Felland Road; thence N00°29'52"E, 739.47 feet along said Easterly right-of-way line; thence N88°18'52"E, 176.97 feet; thence N00°29'52"E, 140.00 feet; thence S88°18'52"W, 176.97 feet to the Easterly right-of-way line of Felland Road; thence N00°29'52"E, 371.85 feet along said Easterly right-of-way line to the North line of said SE1/4; thence S89°45'04"W, 41.00 feet along said North line to the Center of Section 26, T8N, R10E; thence S89°28'02"W, 41.01 feet to the Westerly right-of-way line of Felland Road; thence S00°29'52"W, 1540.91 feet along said Westerly right-of-way line; thence N89°30'08"W, 223.00 feet; thence S00°29'52"W, 94.00; thence S03°35'40"E, 378.40 feet; thence S00°29'52"W, 165.00 feet to the Northerly right-of-way line of Wynter Lane; thence N89°48'19"W, 86.92 feet along said Northerly right-of-way line; thence N00°29'52"E, 150.00 feet; thence N89°48'43"W, 150.00 feet; thence S00°29'52"W, 150.00 feet to the Northerly right-of-way line of Wynter Lane also being a point of curve; thence Northwesterly along said Northerly right-of-way line along a curve to the right which has a radius of 30.00 feet and a chord which bears N56°38'07"W, 32.83 feet to a point of reverse curve; thence Southwesterly along the said Northerly right-of-way line on a curve to the left which has a radius of 60.00 feet and a chord which bears S65°31'39"W, 119.98 feet; thence S40°26'17"W, 44.43 feet to the Southwest corner of Wynter Lane; thence N89°48'43"W, 20.00 feet; thence S40°06'15"W, 128.50 feet; thence S49°55'16"E, 95.80 feet; thence S89°48'43"E, 130.00 feet to the West line of Lot 1; Certified Survey Map No. 2239; thence S00°11'17"E, 21.50 feet along said West line to the Southwest corner of said Lot 1;

thence S89°48'43"E, 495.62 feet along the South line of Lots 1, 2, and 3; Certified Survey Map No. 2239 to the Westerly right-of-way line of Felland Road; thence S00°29'52"W, 122.55 feet along said Westerly right-of-way line to a point of curve; thence Southwesterly along a curve to the right which has a radius of 25.00 feet and a chord which bears S44°51'56"W, 34.96 feet to the Northerly right-of-way line of Lein Road; thence S89°14'01"W, 110.09 feet along said Northerly right-of-way line to a point of curve; thence Westerly along said Northerly right-of-way line on a curve to the left which has a radius of 2500.00 feet and a chord which bears S87°57'36"W, 115.84 feet; thence S86°11'11"W, 358.96 feet along said Northerly right-of-way line to a point of curve; thence Westerly along said Northerly right-of-way line on a curve to the right which has a radius of 2500.00 feet and a chord which bears S87°57'36"W, 111.13 feet; thence S89°14'01"W, 30.23 feet along said Northerly right-of-way line; thence N00°45'59"W, 164.00 feet; thence S89°14'01"W, 36.50 feet; thence S38°55'23"W, 213.12 feet to the Northerly right-of-way line of Lein Road; thence S89°14'01"W, 532.64 feet along said Northerly right-of-way line to a point of curve; thence Northwesterly along a curve to the right which has a radius of 25.00 feet and a chord which bears N45°45'59"W, 35.36 feet to the Easterly right-of-way line of Autumn Lake Parkway; thence N00°45'59"W, 1167.92 feet along said Easterly right-of-way line to a point of curve; thence Northerly along said Easterly right-of-way line on a curve to the right which has a radius of 355.00 feet and a chord which bears N27°24'07"E, 335.17 feet; thence N55°34'13"E, 765.50 feet along said Easterly right-of-way line to a point of curve; thence Northerly along said Easterly right-of-way line on a curve to the left which has a radius of 462.00 feet and a chord which bears N34°15'02.5"E, 335.94 feet; thence N12°55'52"E, 290.10 feet along said Easterly right-of-way line to a point of curve; thence Northerly along said Easterly right-of-way line on a curve to the right which has a radius of 350.00 feet and a chord which bears N28°15'42"E, 185.07 feet; thence N47°31'55"W, 87.42 feet to the Westerly right-of-way line of Autumn Lake Parkway also being a point of curve; thence Southwesterly along said Westerly right-of-way line on a curve to the left which has a radius of 440.00 feet and a chord which bears S27°07'12"W, 215.71 feet; thence S12°55'52"W, 302.55 feet along said Westerly right-of-way to a point of curve; thence Southwesterly along said Westerly right-of-way line on a curve to the right which has a radius of 382.00 feet and a chord which bears S34°55'02.5"W, 277.77 feet; thence S55°34'13"W, 784.18 feet along said Westerly right-of-way line to a point of curve; thence Southwesterly along said Westerly right-of-way line on a curve to the left which has a radius of 445.00 feet and a chord which bears S48°22'00"W, 111.60 feet to a point of reverse curve; thence Westerly along a curve to the right which has a radius of 25.00 feet and a chord which bears S81°58'12.5"W, 32.68 feet to the Northerly right-of-way line of Golden Dusk Parkway; thence N57°13'22"W, 349.41 feet along said Northerly right-of-way line to a point of curve; thence Westerly along said Northerly right-of-way line on a curve to the left which has a radius of 633.00 feet and a chord which bears N64°53'04"W, 168.79 feet to a point of reverse curve; thence Northerly along a curve to the right which has a radius of 25.00 feet and a chord which bears N2°32'15"W, 20.46 feet to the Easterly right-of-way line of Waters Edge Trail; thence N13°28'18"E, 33.89 feet along said Easterly right-of-way line to a point of curve; thence Northerly along said Easterly right-of-way line on a curve to the left which has a radius of 180.00 feet and a chord which bears N06°08'01"E, 45.98 feet; thence N01°12'16"W, 96.14 feet along said Easterly right-of-way line to a point of curve; thence Northerly along said Easterly right-of-way line on a curve to the right which has a radius of 180.00 feet and a chord which bears N21°56'21"E, 141.49 feet; thence N45°04'58"E, 100.90 feet to a point of curve; thence Northerly along said Easterly right-of-way line on a curve to the left which has a radius 235.00 feet and a chord which bears N44°58'39.5"E, 0.86 feet to a point of reverse curve; thence Easterly along a curve to the right which has a radius of 15.00 feet and a chord of N85°16'08.5"E, 19.44 feet to the Westerly right-of-way line of Madison Iris Circle; thence S54°20'04"E, 83.75 feet along said Westerly right-of-way line to a point of curve; thence Northerly along said Easterly right-of-way line on a curve to the right which has a radius of 100.00 feet and a chord of S15°51'52"E, 124.42 feet; thence S22°36'20"W, 45.69 feet along said Westerly right-of-way line to a point of curve; thence Southerly along said Westerly right-of-way line on a curve to the left which has a radius of 150.00 feet and a chord which bears S07°29'43.5"E, 150.46 feet to a point of reverse curve; thence Easterly along said Westerly right-of-way line on a curve to the right which has a radius of 95.00 feet and a chord which bears S24°08'00"E, 44.24 feet to a point of reverse curve; thence Easterly on a curve to the left which has a radius of 57.00 feet and a chord which bears N38°49'26.5"E, 86.58 feet to a point on the Easterly right-of-way line of Madison Iris Circle also being a point of reverse curve; thence Northerly along said Easterly right-of-way line on a curve to the right which has a radius of 50.00 feet and a chord which bears N54°11'42.5"W, 60.86 feet to a point of compound curvature; thence Northerly along said Easterly right-of-way line on a curve to the right which has a radius of 100.00 feet and a chord which bears N02°56'54.5"E, 67.28 feet; thence N22°36'20"E, 45.69 feet along said Easterly right-of-way line to a point of curve; thence Northerly along said Easterly right-of-way line on a curve to the left which has a radius of 150.00 feet and a chord which bears N15°51'51"W, 186.63 feet; thence N54°20'04"W, 83.75 feet along said Easterly right-of-way line to a point of curve; thence Northerly along a curve to the right which has a radius of 15.00 feet and a chord which bears N13°56'16.5"W, 19.44 feet to a point on the Easterly right-of-way line of Waters Edge Trail also being a point of reverse curve; thence Northerly along said Easterly right-of-way line on a curve to the left which has a radius of 235.00 feet and a chord which bears N18°14'08.5"E, 67.22 feet; thence N10°00'46"E, 61.72 feet along said Easterly right-of-way line to a point of curve; thence Northerly along said Easterly right-of-way line on a curve to the left which has a radius of 230.00 feet and a chord which bears N01°43'42.5"E, 66.28 feet to a point of reverse curve; thence Northerly along said Easterly right-of-way line on a curve to the right which has a radius of 15.00 feet and a chord which bears N28°00'57.5"E, 17.02 feet; thence N62°35'16"E, 74.18 feet along said Easterly right-of-way line to a point of curve; thence Northerly along said Easterly right-of-way line on a curve to the left which has a radius of 56.00 feet and a chord which bears N18°50'23.5"W, 110.75 feet; thence S79°43'57"W, 42.58 feet along said Easterly right-of-way line to a point of curve; thence Northwesterly along a curve to the right which has a radius of 15.00 feet and a chord which bears N53°57'48.5"W, 21.69 feet along said Easterly right-of-way line; thence N07°33'34"W, 17.13 feet along said Easterly right-of-way line to a point of curve; thence Northerly along said Easterly right-of-way line on a curve to the left which has a radius of 140.00 feet and a chord which bears N38°11'34"E, 287.02 feet; thence N05°57'18"W, 60.00 feet to the Westerly right-of-way line of Waters Edge Trail also being a point of curve; thence Southerly along said Westerly right-of-way line on a curve to the left which has a radius of 200.00 feet and a chord which bears S38°11'34"W, 200.91 feet; thence S07°39'34"E, 173.29 feet along said Westerly right-of-way line to a point of curve; thence Southerly along said Westerly right-of-way line on a curve to the right which has a radius of 170.00 feet and a chord which bears S01°10'36"W, 52.23 feet; thence S10°00'46"W, 61.72 feet along said Westerly right-of-way line to a point of curve; thence Southerly along said Westerly right-of-way line on a curve to the right which has a radius of 175.00 feet; thence S23°52'52"W, 105.45 feet to the left which has a radius of 633.00 feet and a chord which bears N85°49'46"W, 117.36 feet; thence S88°51'06"W, 159.20 feet along said Northerly right-of-way line to a point of curve; thence Westerly along said Northerly right-of-way line on a curve to the left which has a radius of 633.00 feet and a chord which bears S79°45'59.5"W, 199.90 feet; thence S70°40'53"W, 40.04 feet along said Northerly right-of-way line; thence S19°19'07"E, 66.00 feet to the Southerly right-of-way line of Golden Dusk Parkway; thence N70°40'53"E, 40.04 feet along said Southerly right-of-way line to a point of curve; thence Easterly along said Southerly right-of-way line on a curve to the right which has a radius of 567.00 feet and a chord which bears N79°45'59.5"E, 179.06 feet; thence N88°51'06"E, 159.20 feet along said Southerly right-of-way line to a point of curve; thence Easterly along said Southerly right-of-way line on a curve to the right which has a radius of 567.00 feet and a chord which bears S74°11'08"E, 330.84 feet; thence S57°15'22"E, 346.79 feet along said Southerly right-of-way line to a point of curve; thence Southeastery along a curve to the right which has a radius of 25.00 feet and a chord which bears S15°07'13"E, 33.52 feet to the Westerly right-of-way line of Autumn Lake Parkway also being a point of reverse curve; thence Southerly along said Westerly right-of-way line on a curve to the left which has a radius of 445.00 feet and a chord which bears S13°06'28.5"W, 213.42 feet; thence S00°45'59"E, 194.24 feet along said Westerly right-of-way line to a point of curve; thence Southwesterly along a curve to the right which has a radius of 25.00 feet and a chord which bears S44°14'01"W, 35.36 feet to the Northerly right-of-way line of Levitan Lane; thence S89°14'01"W, 14.75 feet along said Northerly right-of-way line to a point of curve; thence Westerly along said Northerly right-of-way line on a curve to the right which has a radius of 120.00 feet and a chord which bears N74°10'12.5"W, 68.55 feet; thence N57°34'26"W, 306.68 feet along said Northerly right-of-way line to a point of curve; thence Westerly along said Northerly right-of-way line on a curve to the left which has a radius of 230.00 feet and a chord which bears N74°10'12.5"W, 131.39 feet; thence S89°14'01"W, 425.58 feet along said Northerly right-of-way line; thence S01°17'24"W, 60.05 feet to the Southerly right-of-way line of Levitan Lane, thence N89°14'01"E, 427.73 feet along said Southerly right-of-way line to a point of curve; thence Easterly along said Northerly right-of-way line on a curve to the right which has a radius of 170.00 feet and a chord which bears S74°10'12.5"E, 97.11 feet; thence S57°34'26"E, 306.68 feet along said Southerly right-of-way line to a point of curve; thence Easterly along said Southerly right-of-way line on a curve to the left which has a radius of 180.00 feet and a chord which bears S74°10'12.5"E, 102.83 feet; thence N89°14'01"E, 14.75 feet along said Southerly right-of-way line to a point of curve; thence Southwesterly along a curve to the right which has a radius of 25.00 feet and a chord which bears S45°45'59"E, 35.36 feet to the Westerly right-of-way line of Autumn Lake Parkway; thence S00°45'59"E, 845.00 feet along said Westerly right-of-way line to a point of curve; thence Southwesterly along a curve to the right which has a radius of 25.00 feet and a chord which bears S44°14'01"W, 35.36 feet to the Northerly right-of-way line of Lein Road; thence S89°14'01"W, 911.69 feet to the point of beginning. Containing 10,469,302 square feet (240.34 acres).

Dated this 20th day of January, 2015.

Brett T. Stoffregan, Professional Land Surveyor S-2742



D'ONOFRIO KOTKE AND ASSOCIATES, INC.

7530 Westward Way, Madison, WI 53717
Phone: 608.833.7530 • Fax: 608.833.1089

YOUR NATURAL RESOURCE FOR LAND DEVELOPMENT

FN:114-07-117

SHEET 19 OF 20

VILLAGE AT AUTUMN LAKE REPLAT

LOTS 1-519 AND OUTLOTS 1-15, OUTLOTS 18-39 AND VARIOUS DISCONTINUED ROADS WITHIN VILLAGE AT AUTUMN LAKE,
LOCATED IN THE NE1/4, SW1/4, SE1/4 OF THE NW1/4, AND THE NE1/4, NW1/4, SW1/4 AND THE SE1/4 OF THE SW1/4, AND
THE NW1/4 AND THE SW1/4 OF THE SE1/4 OF SECTION 26, T8N, R10E, CITY OF MADISON, DANE COUNTY, WISCONSIN

There are no objections to this plat with respect to
Secs. 236.15, 236.16, 236.20 and 236.21(1) and (2),
Wis. Stats. as provided by s. 236.12, Wis. Stats.

Certified _____, 20____



Department of Administration

OWNER'S CERTIFICATE

MREC VH Madison Investors, LLC a limited liability company duly organized and existing under and by virtue of the laws of the State of Wisconsin, as owner, does hereby certify that said limited liability company caused the land described on this plat to be surveyed, divided, mapped and dedicated as represented on this plat.

MREC VH Madison Investors, LLC does further certify that this plat is required by S236.10 or S236.12 Wisconsin Statutes to be submitted to the following agencies for approval or objection:

Department of Administration
Common Council, City of Madison
Dane County Zoning and Land Regulation Committee

In witness whereof, MREC VH Madison Investors, LLC has caused these presents to be signed by its official officer(s) of said limited liability company at Madison, Wisconsin this _____ day of _____, 2015.

MREC VH Madison Investors, LLC

STATE OF WISCONSIN)
COUNTY OF DANE) S.S

Personally came before me this _____ day of _____, 2015, the above named officer(s) of the above named MREC VH Madison Investors, LLC to me known to be the person(s) who executed the foregoing instrument and acknowledged the same.

My Commission expires _____
Notary Public, Dane County, Wisconsin

OWNER'S CERTIFICATE

The City of Madison, a corporation duly organized and existing under and by virtue of the laws of the State of Wisconsin, as owners, does hereby certify that said corporation caused the lands described on this plat to be surveyed, divided, mapped and dedicated as represented on this plat.

The City of Madison does further certify that this plat is required by S.236.10 or approval or objection:

Department of Administration
Common Council, City of Madison
Dane County Zoning and Land Regulation Committee

In witness whereof, the said City of Madison has caused these presents to be signed by Paul R. Soglin, its Mayor, and Maribeth Witzel-Behl, its City Clerk, at Madison, Wisconsin and its corporate seal to be hereunto affixed on this _____ day of _____, 2015.

City of Madison

By: _____
Paul R. Soglin, Mayor

By: _____
Maribeth Witzel-Behl, City Clerk

STATE OF WISCONSIN)
COUNTY OF DANE) S.S

Personally came before me this _____ day of _____, 2015, the above named Paul R. Soglin, Mayor of the City of Madison, acting in said capacity and known to me to be the person who executed the foregoing instrument and acknowledged the same.

My Commission expires _____
Notary Public, Dane County, Wisconsin

STATE OF WISCONSIN)
COUNTY OF DANE) S.S

Personally came before me this _____ day of _____, 2015, the above named Maribeth Witzel-Behl, City Clerk of the City of Madison, acting in said capacity and known to me to be the person who executed the foregoing instrument and acknowledged the same.

My Commission expires _____
Notary Public, Dane County, Wisconsin

MORTGAGEE CERTIFICATE

MREC VH Madison, LLC, a limited liability company duly organized and existing under and by virtue of the laws of the State of Wisconsin, mortgagee of lands contained in this plat, does hereby consent to the above Owner's Certificate and to the surveying, dividing, mapping and dedication of the lands described on this plat.

In witness whereof, said MREC VH Madison, LLC has caused these presents to be signed by its official officer(s) listed below on this _____ day of _____, 2015.

MREC VH Madison, LLC

STATE OF WISCONSIN)
COUNTY OF DANE) S.S

Personally came before me this _____ day of _____, 2015, the above named officer(s) of the above named MREC VH Madison, LLC, to me known to be the person(s) who executed the foregoing instrument and acknowledged the same.

My Commission expires _____
Notary Public, Dane County, Wisconsin

MADISON COMMON COUNCIL CERTIFICATE

Resolved that the plat of "Village at Autumn Lake Replat" located in the City of Madison, was hereby approved by Enactment Number _____, File I.D. Number _____, adopted this _____ day of _____, 2015, and that said Enactment further provided for the acceptance of those lands dedicated and rights conveyed by said plat to the City of Madison for public use.

Dated this _____ day of _____, 2015.

Maribeth Witzel-Behl, City Clerk, City of Madison, Dane County, Wisconsin

COUNTY TREASURER'S CERTIFICATE

I, Adam Gallagher, being the duly elected, qualified, and acting treasurer of the County of Dane, do hereby certify that in accordance with the records in my office, there are no unpaid taxes or special assessments as of this _____ day of _____, 2015 affecting the land included in "Village at Autumn Lake Replat".

Adam Gallagher, Treasurer, Dane County, Wisconsin

CITY OF MADISON TREASURER'S CERTIFICATE

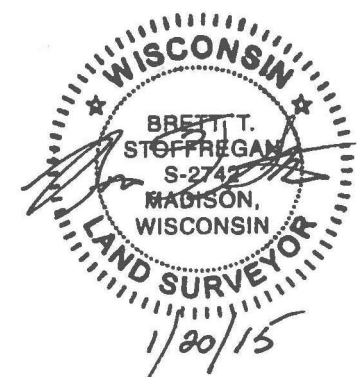
I, David M. Gawenda, being the duly appointed, qualified, and acting Treasurer of the City of Madison, Dane County, Wisconsin, do hereby certify that, in accordance with the records in my office, there are no unpaid taxes or unpaid special assessments as of this _____ day of _____, 2015 on any of the lands included in the plat of "Village at Autumn Lake Replat".

David M. Gawenda, City Treasurer, City of Madison, Dane County, Wisconsin

REGISTER OF DEEDS CERTIFICATE

Received for recording this _____ day of _____, 2015 at _____ o'clock _____ M.
and recorded in Volume _____ of Plats on Pages _____ as Document Number _____.

Kristi Chiebowski, Dane County Register of Deeds



D'ONOFRIO KOTTKE AND ASSOCIATES, INC.

7530 Westward Way, Madison, WI 53717
Phone: 608.833.7530 • Fax: 608.833.1089

YOUR NATURAL RESOURCE FOR LAND DEVELOPMENT

FN:14-07-117