



1
←



2
→



3
←

- 1- Bedroom with Bearing Wall cut out and no header
- 2- 2nd Floor Bath
- 3- Same as # 1



①
←

②
→



③
←



① - 2x8 spanning 14' covered
in mold

② - Stone Foundation with
crawl space under other
half of house

③ - moldy Front Entrance



1
←



2
→

3
←



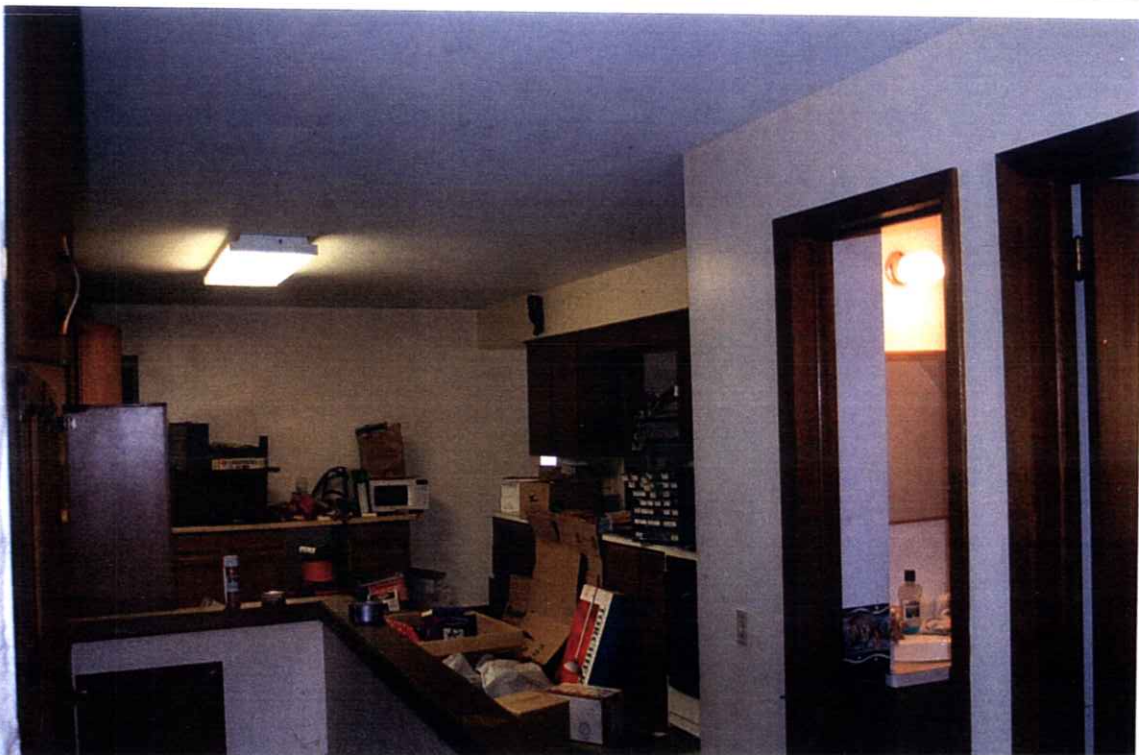
- ① Front of house
- ② - old porch and Front Steps Falling AWAY from house
- ③ - Tree house



1
←



2
→



3
←

- 1- Dining Area leading to 2nd Floor
- 2- Kitchen Area with open stairs to Basement
- 3- Kitchen Area