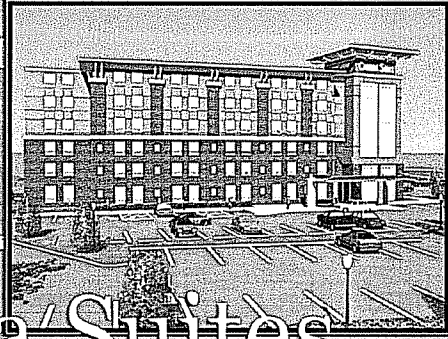
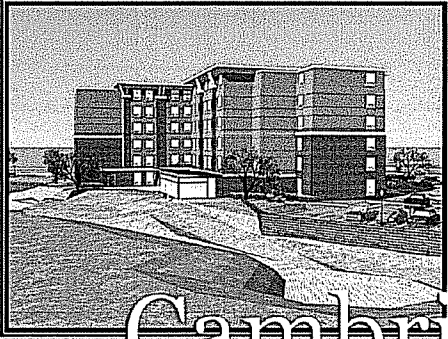




The American Center - Madison Wisconsin

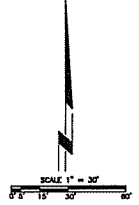
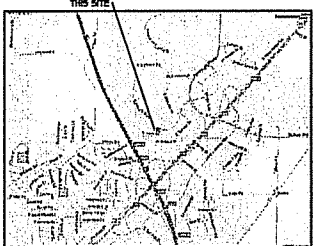


Badger Midwest Holdings



Cambria Suites

- LEGEND**
- SECTION CORNER FOUND
 - IRON STAKE FOUND
 - REBAR PLACED
 - × CHECKED CROSS
 - DRILL HOLE
 - △ SURVEY NAIL
 - HOOD STAKE
 - (DASHED) RECORDS AS DATA
 - (DASHED) HEADED DATA
 - BOLL BORE
 - SANITARY HANGHOLE
 - YARD CLEANOUT
 - STORM HANGHOLE
 - STORM INLET
 - STORM CATCH BASIN
 - STORM CATCH BASIN
 - STORM CLEAN OUT
 - APPROX. OVERHALL
 - WATER HANGHOLE
 - HYDRANT
 - WATER VALVE
 - CONNECTION
 - FUSE INDICATOR VALVE
 - GAS METER
 - GAS VALVE
 - TRAFFIC SIGNAL
 - TRAPPING CONTROL BOX
 - LIGHT POLE
 - ELECTRICAL OUTLET
 - UTILITY POLE
 - BUY WIRE / DEAD MAN
 - ELECTRIC PEDestal
 - ELECTRIC METER
 - ELECTRIC HANGHOLE
 - TELEPHONE PEDestal
 - TELEPHONE HANGHOLE
 - GABLE PEDestal
 - SPRINKLER HEAD
 - BOLLARD
 - SIGN
 - MONITORING HELL
 - HANDICAP RAMP
 - HANDICAP STALL
 - DOOR EGRESS HALL
 - FENCE LINE
 - EDGE OF TREES
 - PROPERTY LINE
 - CENTER LINE
 - EXISTING BUILDING
 - EXISTING CONCRETE
 - EXISTING GRAVEL
 - EXISTING ASPHALT
 - PROPOSED CONCRETE PAVEMENT
 - PROPOSED CONCRETE SIDEWALK
 - PROPOSED HEAVY DUTY STRIPED PAVEMENT
 - PROPOSED ASPHALT PAVEMENT
 - NON ASPHALT
 - EX ASPHALT TO BE FILLED & OVERLAD
 - BROKEN MATING
 - STABILIZED CONSTRUCTION ENTRANCE
 - SAN GUT LINE
 - CATCH CURB
 - RECYCLE CURB
 - PERIMETER SALT FENCE
 - STRIP DRAIN
 - INLET PROTECTION
 - STRIP DRAIN/SALT FENCE
 - INLET PROTECTION
 - CANEY / SHADE TREE
 - SHIELD
 - COMPASS TREE
 - SAN - SANITARY BEWER
 - ST - STORM BEWER
 - HD - HOOP DRAIN
 - OH - OVERHEAD WIRE
 - CATV - BURIED CABLE TV LINES
 - - BURIED ELECTRIC
 - - BURIED TELEPHONE
 - - FEEDER OPTIC
 - - BURIED GAS MAIN
 - - CONDUIT
 - X MARKED SPOT ELEVATION
 - CAUTION
 - - PROPERTY LINE
 - - UTILITY EASEMENT
 - - SETBACK LINE
 - - EDGE OF WATER
 - - NEUL AND BOUNDARY
 - - 100 YEAR FLOOD BOUNDARY
 - IN HOOD TOP OF HALL ELEVATION
 - IN SPOUD BOTTOM OF HALL ELEVATION



Parking Lot Plan Site Information Block

Site Address: **EASTPARK BLVD. AND WEST TERRACE**
 Site Acreage: **0.24 AC.**

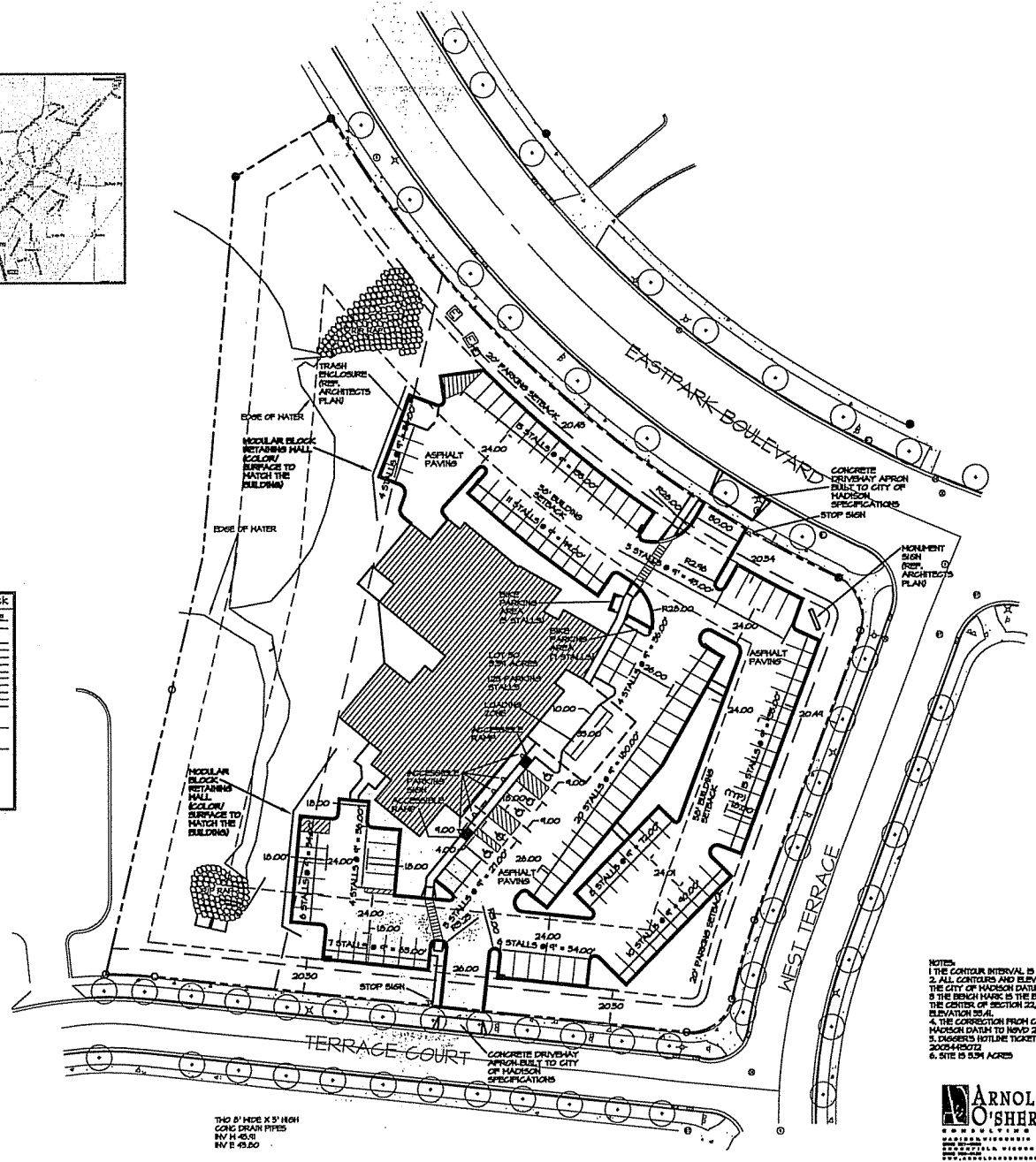
Number of building stories (above grade): **0**
 Building height: **10.00 FT. (3.05 M)**
 DETERMINE type of construction: **STRUCTURE OR ADDITIONAL IN**
 Total square footage of building: **24,000 S.F.**
 Use of Property: **OFFICE**

Number of acres of site: **0.24**
 Square square feet of retail area: **0**
 Number of employees in production area: **0**
 Capacity of restaurant/food service: **0**

Number of bicycle slots: **0**

Spot	Stalls
Handicap	1
Standard	125
Total	126

Number of trees shown: **21**



- NOTES**
1. THE CONTOUR INTERVAL IS ONE FOOT.
 2. ALL CONTOURS AND ELEVATIONS ARE THE CITY OF MADISON DATA.
 3. THE BRUSH HARK IS THE BRUSH GAP AT THE CENTER OF SECTION 22, T4N, R3E.
 4. THE CORRECTION FROM CITY OF MADISON DATA TO NVD 24 IS 0-45.00.
 5. DUGGERS HOTLINE TICKET NO. 2009-449272
 6. SITE IS 5.31 ACRES

3/10 8" WIDE X 5" HIGH
 CONC. DRAIN PIPES
 INV. H. 45.00
 INV. E. 45.00

(616) 344-8888
Environics
 PROFESSIONAL ENGINEERS
 6301 N. Main
 Suite 100
 Memphis, TN 38120

JOB NO.
08114

DATE
MARCH 22, 2006

REVISIONS

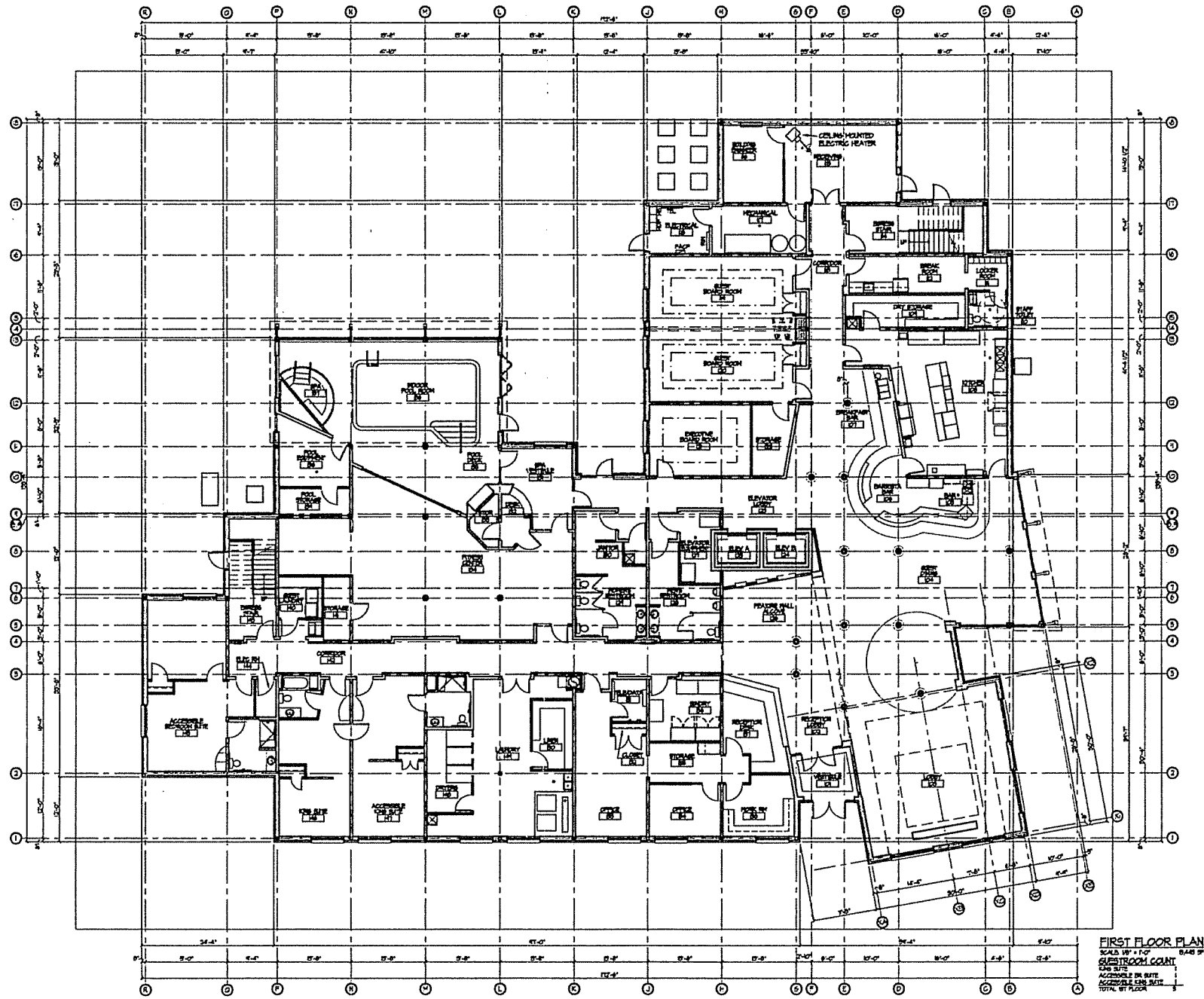
**A NEW HOTEL FOR
 CAMBRIA SUITES**
 EASTPARK BOULEVARD AND WEST TERRACE
 MADISON, KENTUCKY

SITE PLAN

SHEET

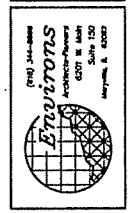
C1.0
 OF

ARNOLD AND O'SHERIDAN INC.
 ARCHITECTS
 1000 N. MAIN ST., SUITE 100
 MEMPHIS, TN 38103
 (901) 525-1100
 FAX (901) 525-1101
 WWW.AOARCHITECTS.COM



FIRST FLOOR PLAN
 SCALE: 1/4" = 1'-0"
 GUESTROOM COUNT:
 146 SUITE
 100 SUITE
 100 SUITE
 100 SUITE
 TOTAL 446 SUITE

JOB NO.
 05114



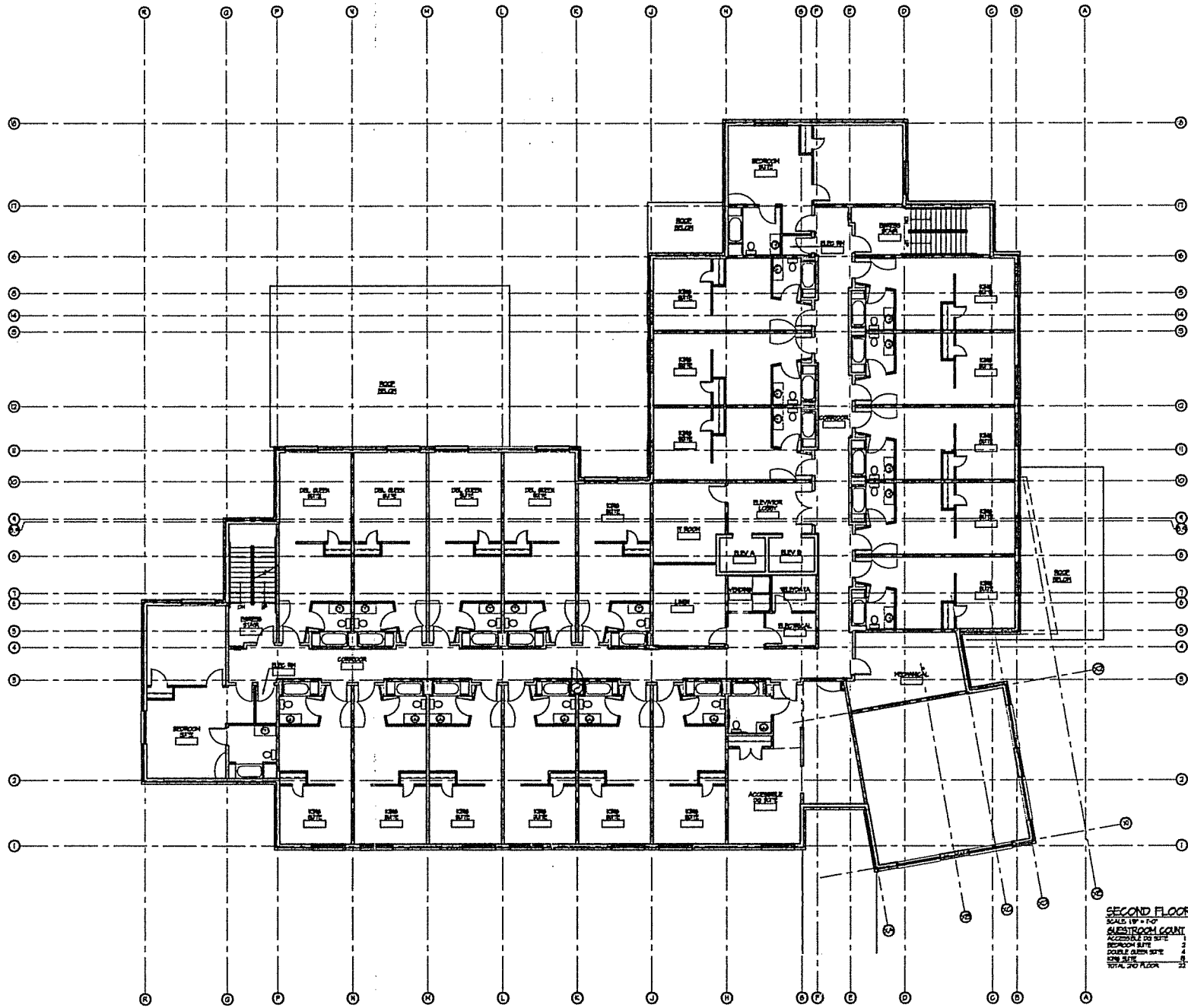
DATE:
 MARCH 2, 2006
 REVISED:



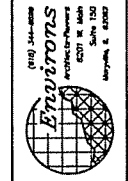
A NEW HOTEL FOR
CAMBRIA SUITES
 EASTPARK BOULEVARD AND WEST TERRACE
 MADISON, WISCONSIN
FIRST FLOOR PLAN

SHEET
A1.1

© 2006 ETZION ARCHITECTS-PLANNERS. ALL RIGHTS RESERVED.



SECOND FLOOR PLAN
 SCALE: 1/8" = 1'-0"
 SHEETWORK COUNT: 6007 SF
 ACCESS TO SITE
 BEDROOM SUITE
 DOUBLE GUEST SUITE
 1074 SUITE
 TOTAL 20 FLOOR: 1124 SF



JOB NO.
05114

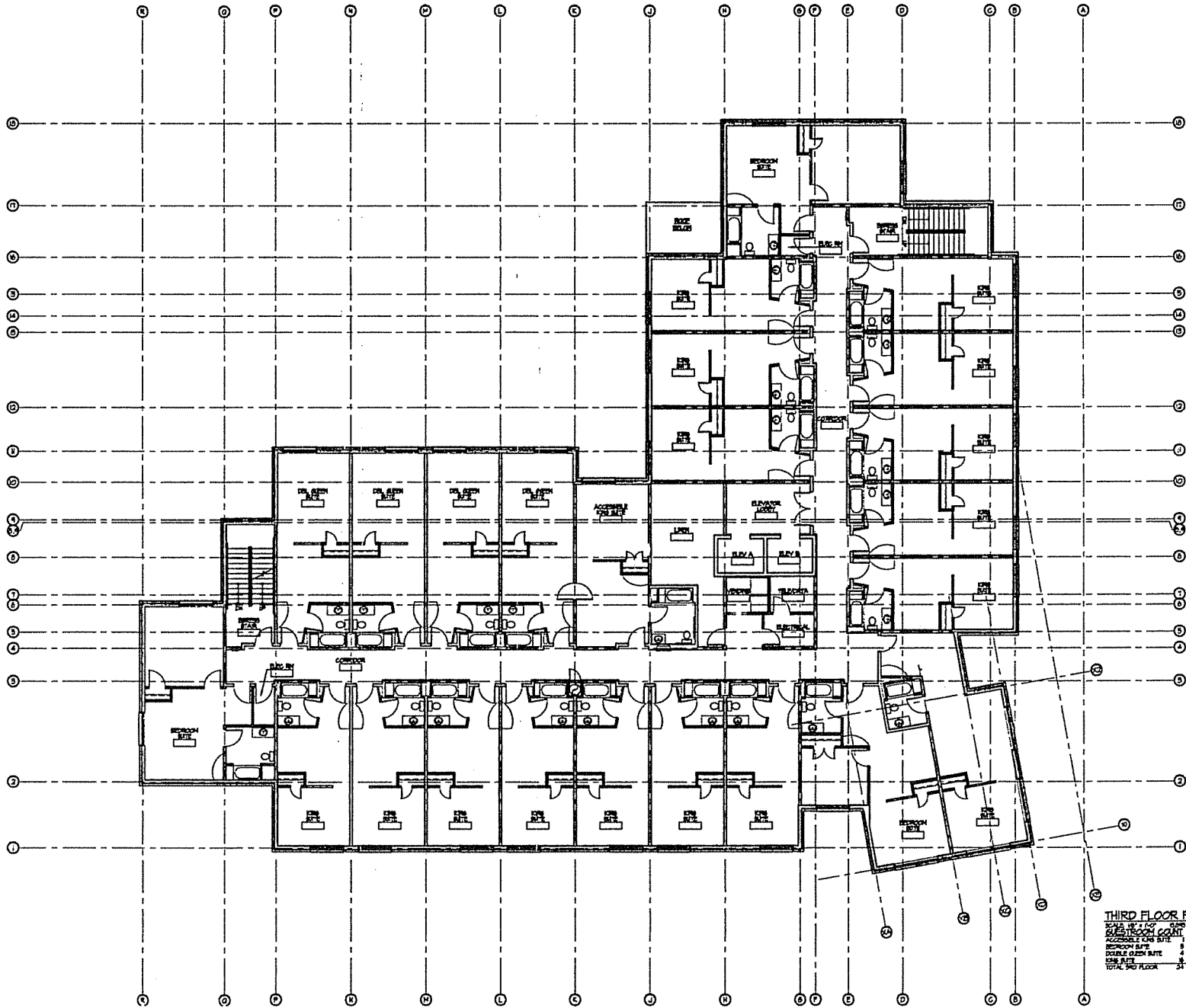
DATE:
MARCH 21, 2006
REVISED:



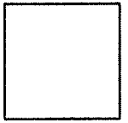
A NEW HOTEL FOR:
CAMBRIA SUITES
 EASTPARK BOULEVARD AND WEST TERRACE
 MILWAUKEE, WISCONSIN
 SECOND FLOOR PLAN

SHEET
A1.2

© 2006 ENEVATIONS ARCHITECTS & PLANNERS. ALL RIGHTS RESERVED.



THIRD FLOOR PLAN
 SCALE: 1/8" = 1'-0"
 SHEET COUNT: 1 OF 3
 ACCESSIBLE ONE-SITE
 BEDROOM SUITE
 DOUBLE GUEST SUITE
 1000 S.F.
 TOTAL 3RD FLOOR



2110 JEFFERSON
ETZAVITONS
 ARCHITECTS/PLANNERS
 6307 W. MAIN
 MILWAUKEE, WI 53222

JOB NO.
 05114

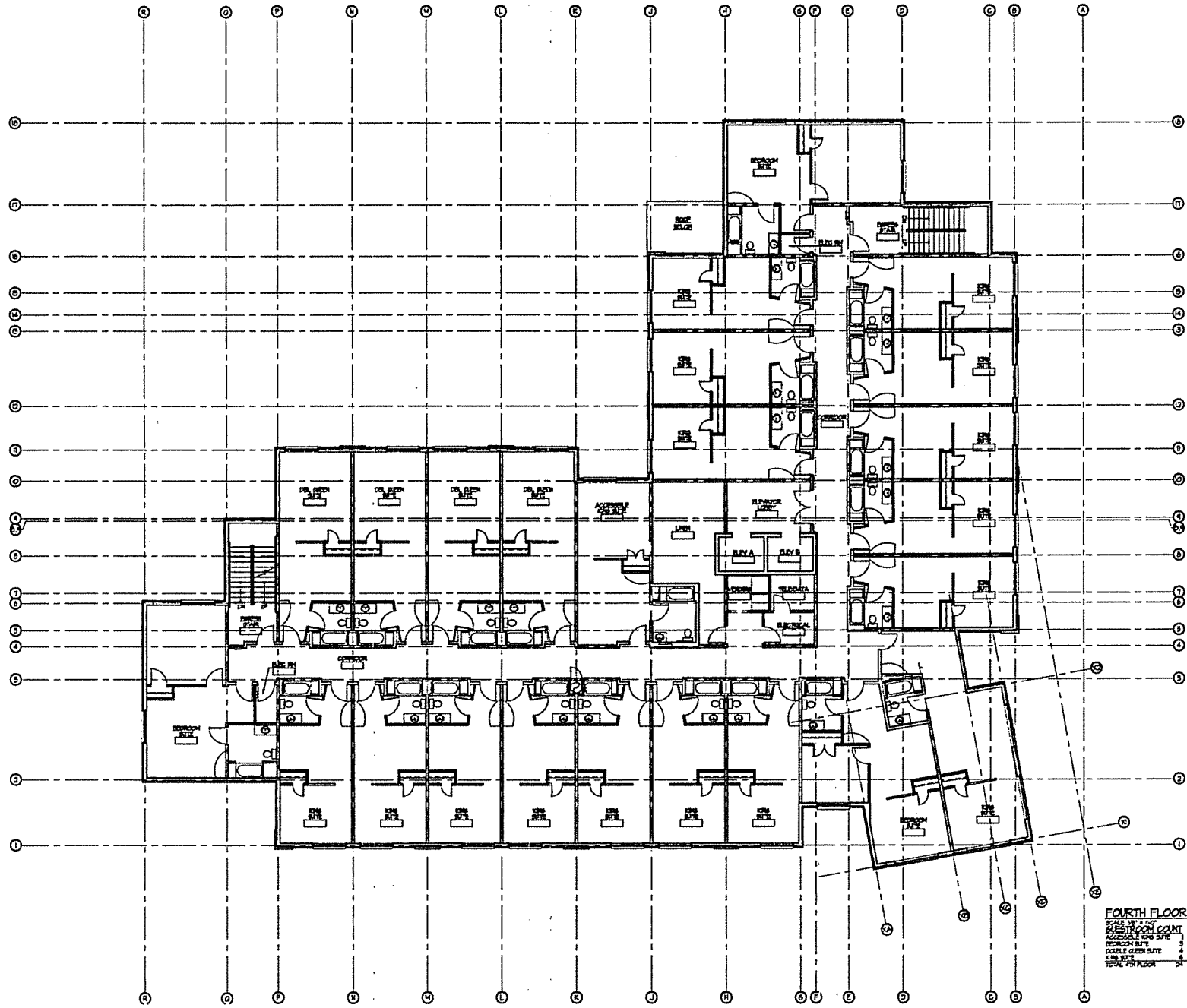
DATE:
 FEBRUARY 14, 2006
 REVISED:



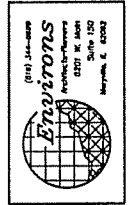
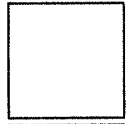
A NEW HOTEL FOR
CAMBRIA SUITES
 EASTWAKE BOULEVARD AND WEST TERRACE
 MADISON, WISCONSIN
THIRD FLOOR PLAN

SHEET
A1.3
 OF

© 2006 SHAWDOH ARCHITECTS-PLANNERS ALL RIGHTS RESERVED.



FOURTH FLOOR PLAN
 SCALE: 1/4" = 1'-0"
 AREA: 10,000 SQ. FT.
 ACCESSIBLE ONE SUITE
 DECKON SUITE
 DOUBLE GREEN SUITE
 1000 SQ. FT.
 TOTAL 4TH FLOOR



JOB NO.
 05114

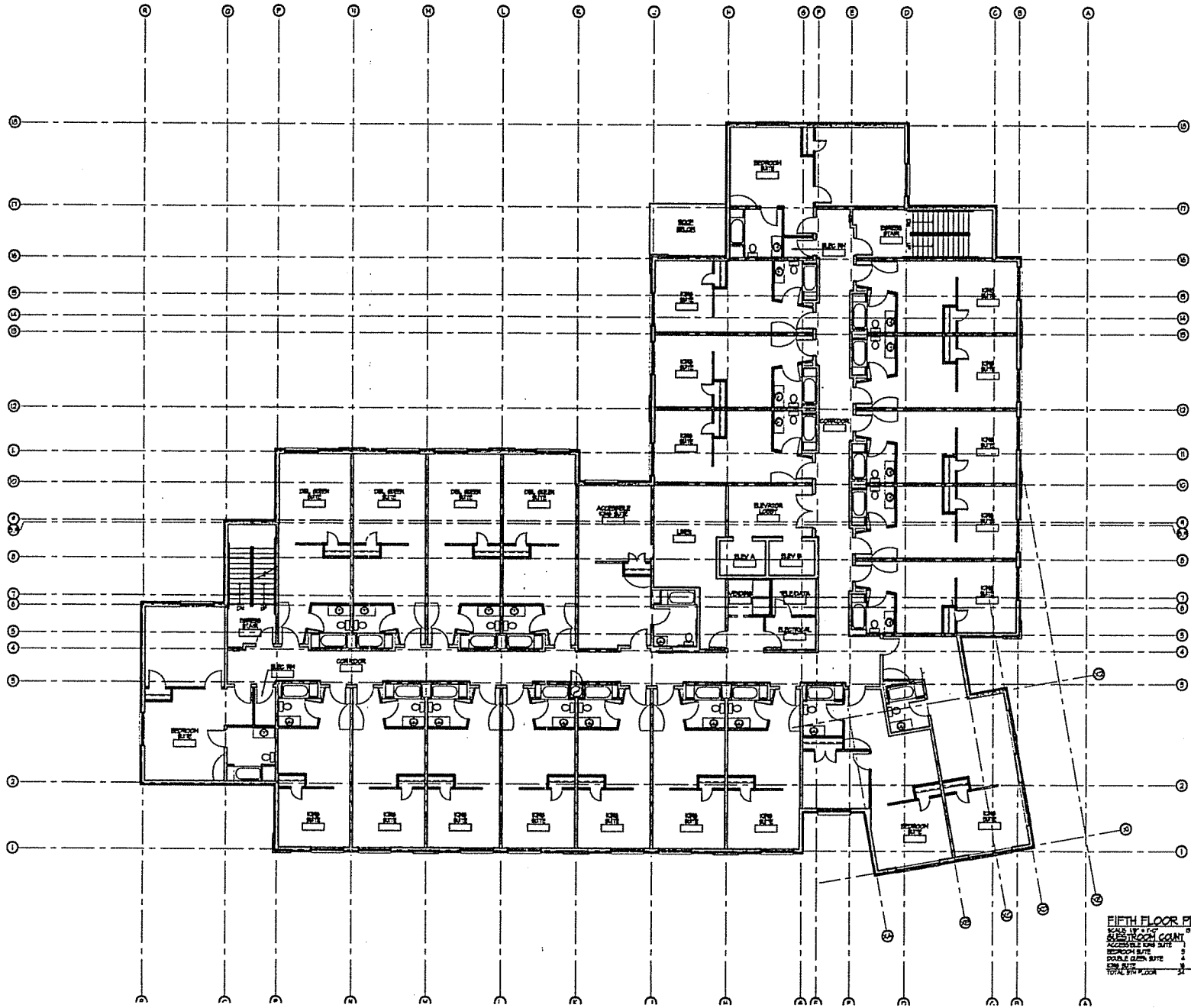
DATE:
 FEBRUARY 14, 2006
 REVISED:



A NEW HOTEL FOR
CAMBRIA SUITES
 EASTTARK BULWARD AND WEST TERRACE
 MANASSAS, VIRGINIA
FOURTH FLOOR PLAN

SHEET
A1.4
 OF

© 2006 ENVISION ARCHITECTURE. ALL RIGHTS RESERVED.



FIFTH FLOOR PLAN
 SCALE: 1/8" = 1'-0"
 ROOM COUNT: 104
 ACCESSIBLE ROOMS: 10
 ROOMS WITH BATH: 104
 DOUBLE OCEAN SUITE: 1
 ONE SUITE: 1
 TOTAL FTH FLOOR: 106

© 2008 EYEWIRE ARCHITECTS/P.A. AND ALL RIGHTS RESERVED.

A NEW HOTEL, POPE
CAMBRIA SUITES
 EASTPARK BULWARK AND WEST TERRACE
 MADISON, WISCONSIN

FIFTH FLOOR PLAN

SHEET
A1.5
 OF

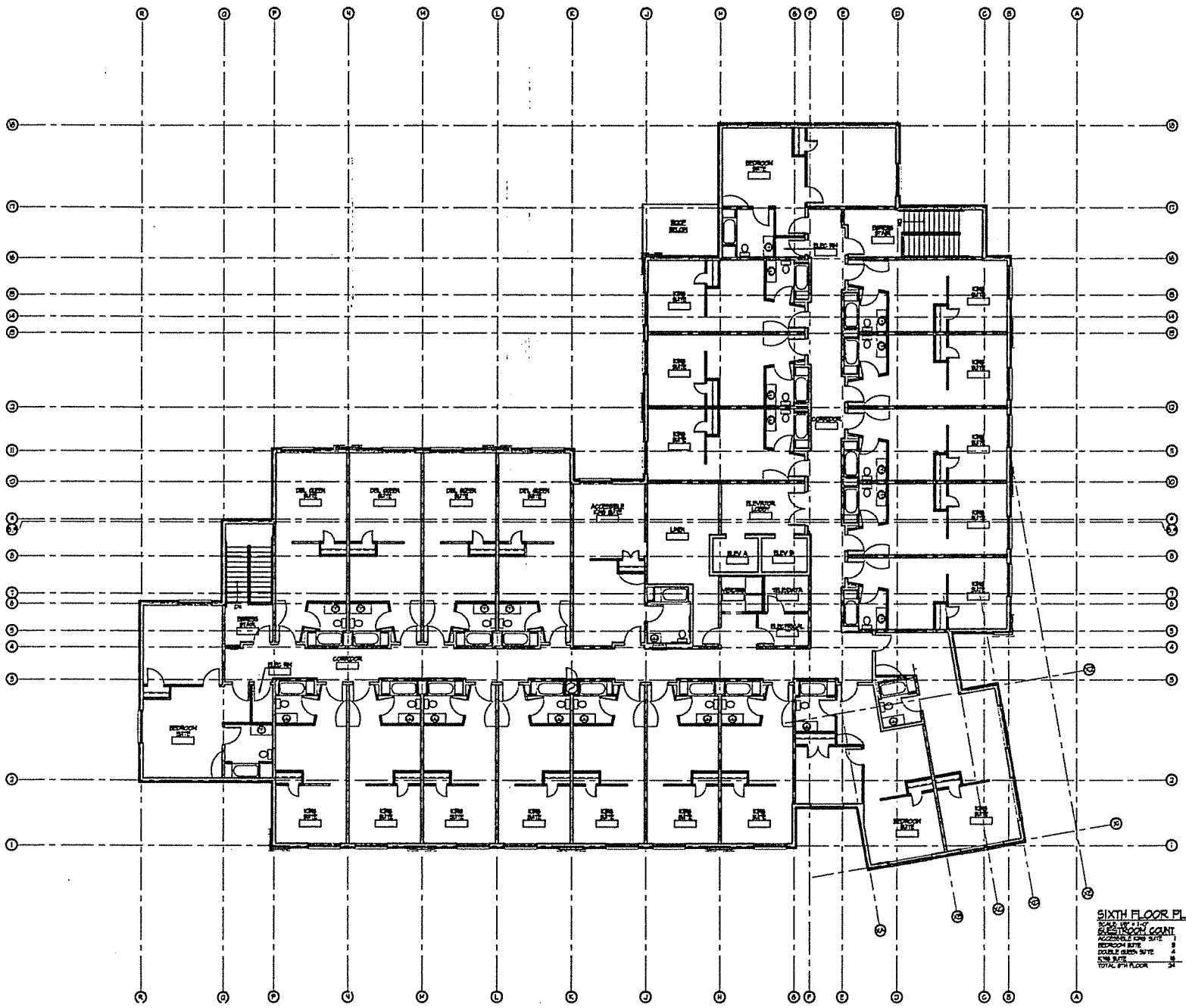

 EYEWIRE ARCHITECTS/P.A.
 6301 W. Alder
 Suite 1200
 Madison, WI 53712
 (608) 261-8888

JOB NO.
 05114

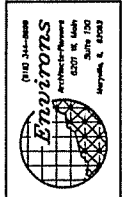
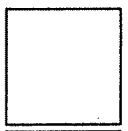
DATE:
 FEBRUARY 14, 2008

REVISED:


CAMBRIA SUITES



SIXTH FLOOR PLAN
 SCALE: 1/8" = 1'-0"
 ROOM COUNT
 ACCORDING TO ONE SUITE
 ROOMS: 10
 DOUBLE ROOM SUITE: 10
 ONE SUITE: 10
 TOTAL 6TH FLOOR: 30



JOB NO.
05114

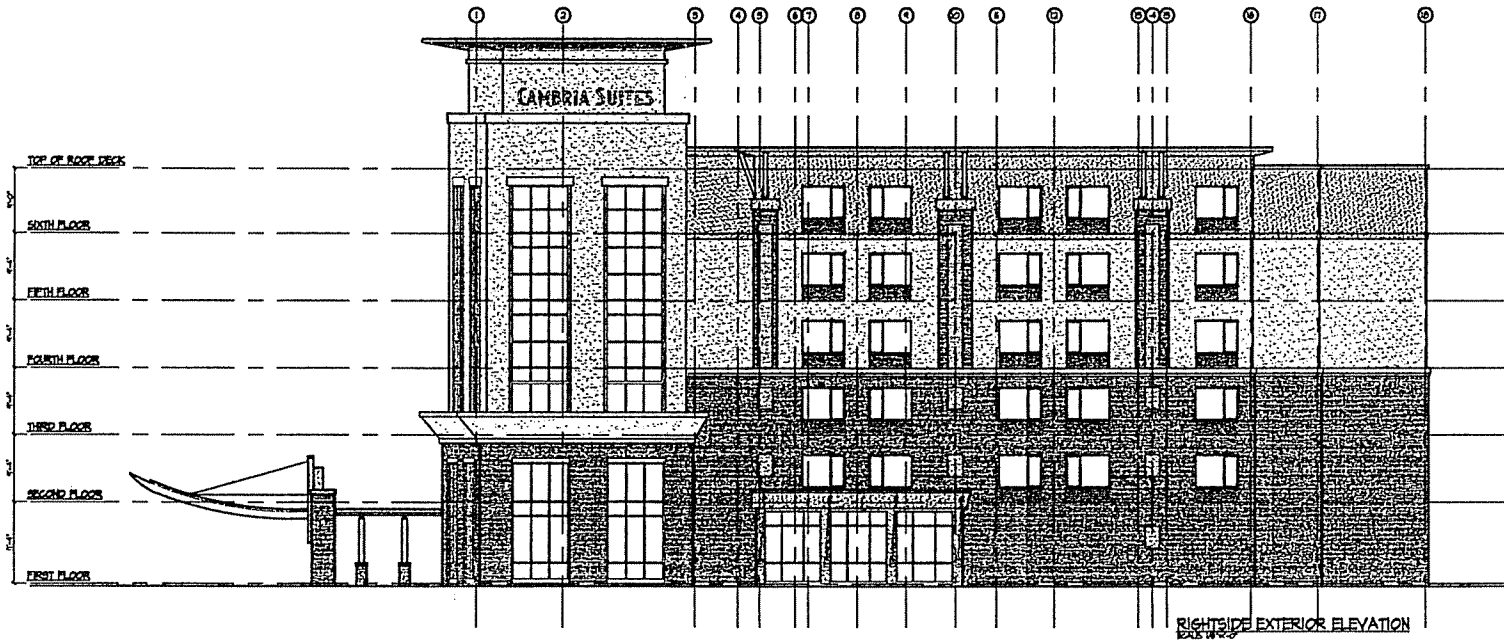
DATE:
FEBRUARY 14, 2006
REVISED:



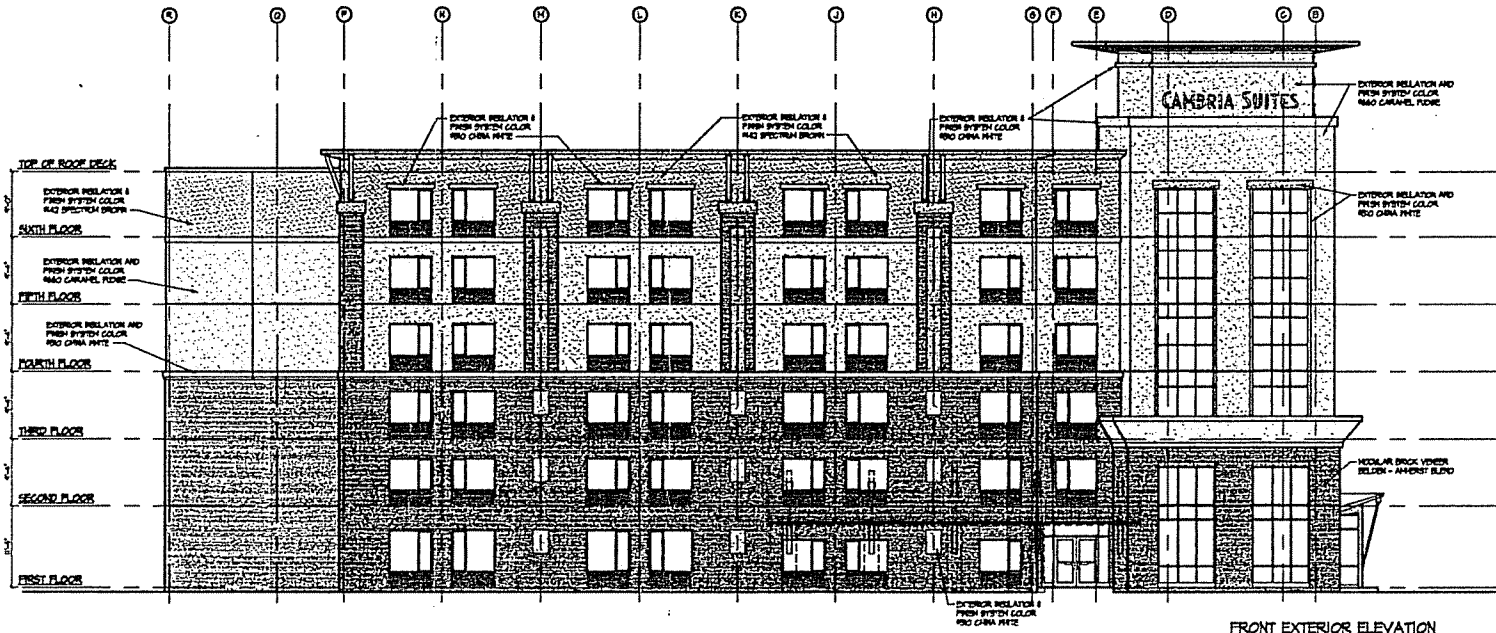
A NEW HOTEL FOR
CAMBRIA SUITES
 EASTPARK BULLETPARK AND WEST THERACE
 MADISON, WISCONSIN
SIXTH FLOOR PLAN

SHEET
A1.6
 OF

© 2006 ETRUOTIS ARCHITECTS/P.A. ALL RIGHTS RESERVED.



RIGHTSIDE EXTERIOR ELEVATION
DATE: 12/12/05



FRONT EXTERIOR ELEVATION
DATE: 12/12/05

© 2006 DIVISION ARCHITECTS-PLANNERS ALL RIGHTS RESERVED.

010 344-8888
Evansons
 ARCHITECTS-PLANNERS
 8301 N. Main
 Portland, O. 97202

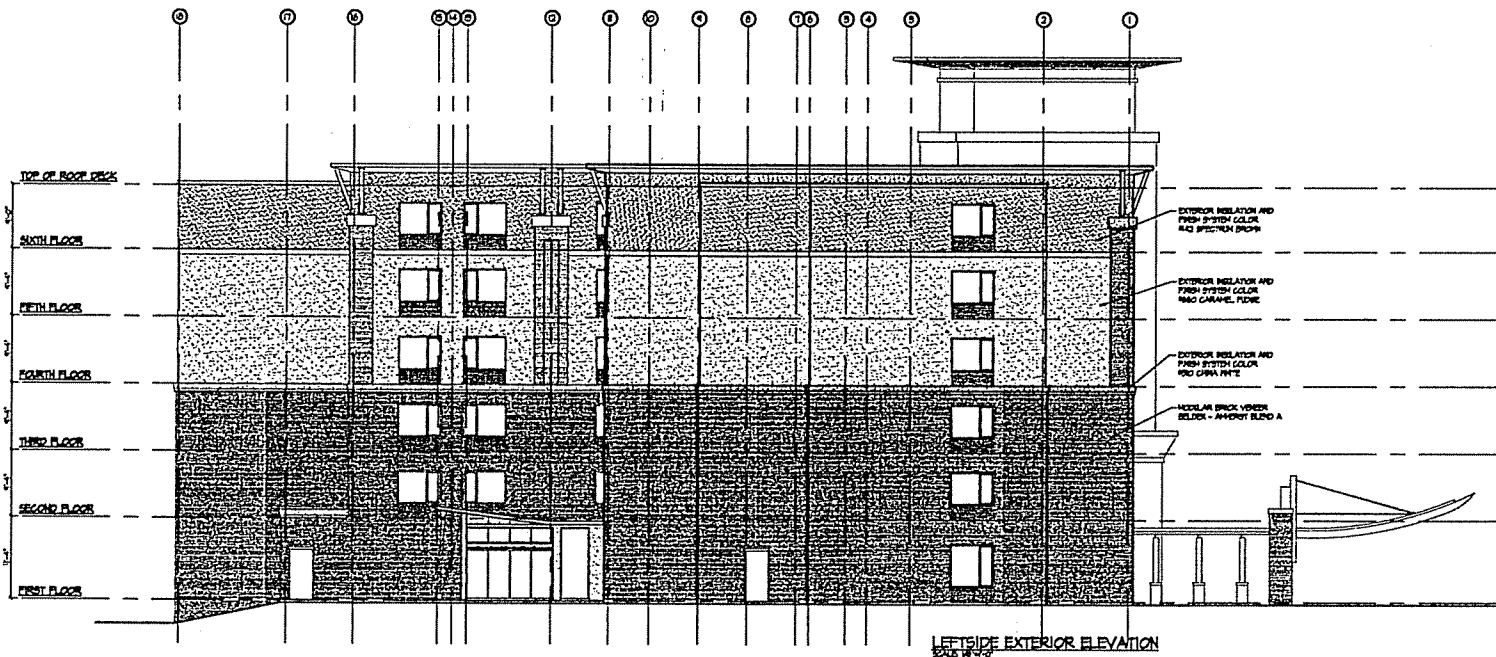
JOB NO.
05114

DATE:
MARCH 1, 2006
 REVISED:

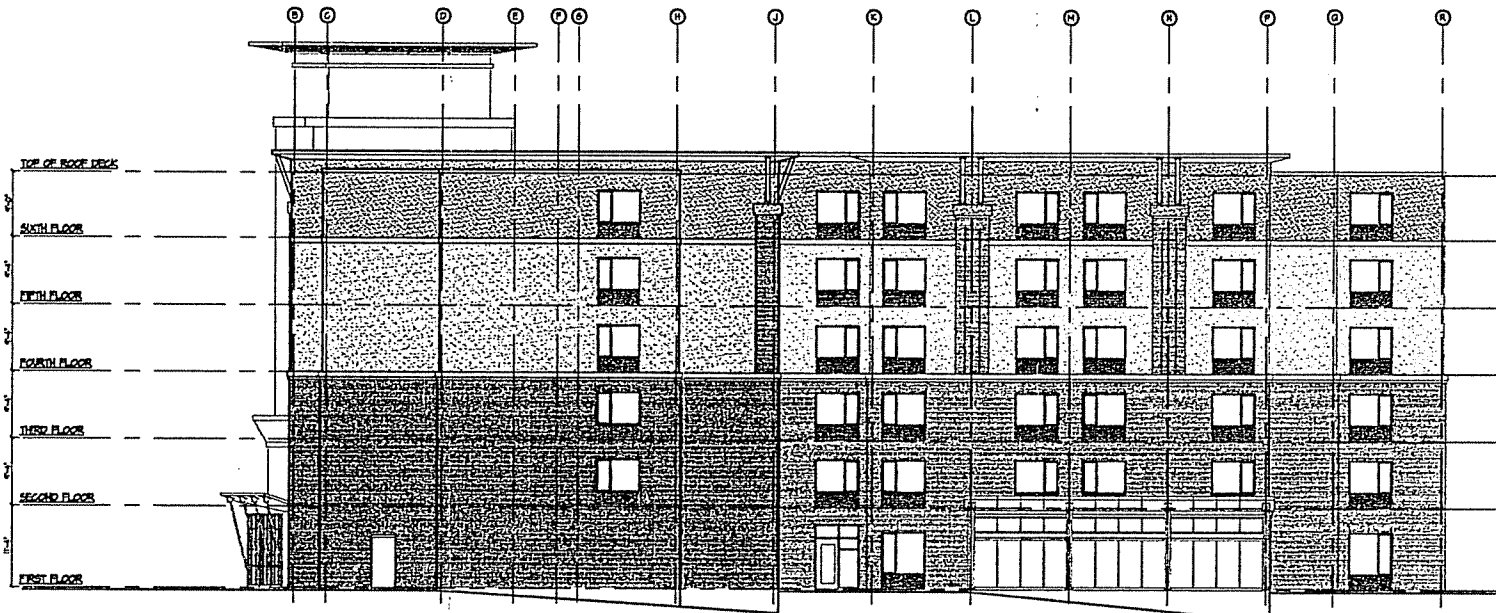
CAMBRIA SUITES

A NEW HOTEL FOR
CAMBRIA SUITES
 EASTPARK BOUTIQUE AND WEST TERRACE
 MADISON, INDIANAPOLIS
 EXTERIOR ELEVATIONS

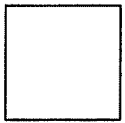
SHEET
A2.0
 of



LEFTSIDE EXTERIOR ELEVATION
SCALE 3/8" = 1'-0"



REAR EXTERIOR ELEVATION
SCALE 3/8" = 1'-0"



1740 Jull-Drive
Elevation Systems
Architectural Services
8201 W. 13th
Suite 100
Maple, N. 58083

JOB NO.
05114

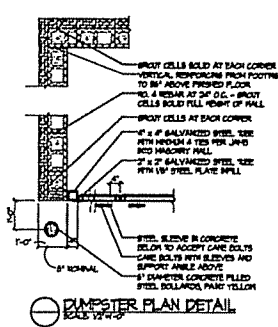
DATE:
MARCH 1, 2006
REVISED:



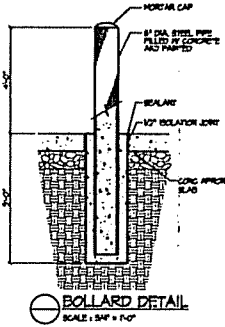
A NEW HOTEL FOR
CAMBRIA SUITES
EASTPARK BOULEVARD AND WEST TERESA
MILWAUKEE, WISCONSIN
EXTERIOR ELEVATIONS

SHEET
A2.1
OF

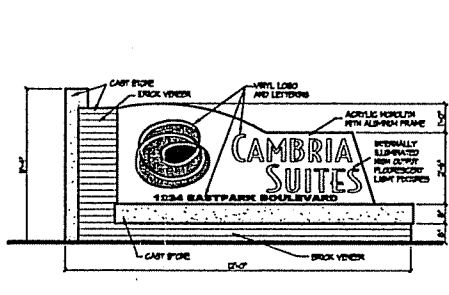
© 2006 ELEVATION SYSTEMS, INC. ALL RIGHTS RESERVED.



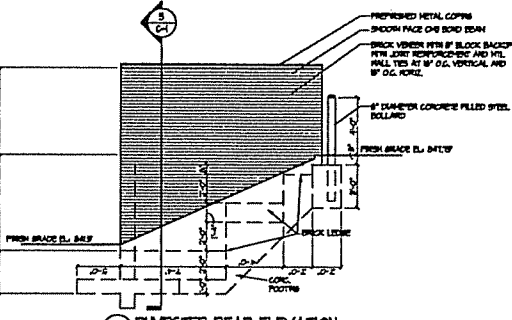
○ DUMPSTER PLAN DETAIL
SCALE: 1/2" = 1'-0"



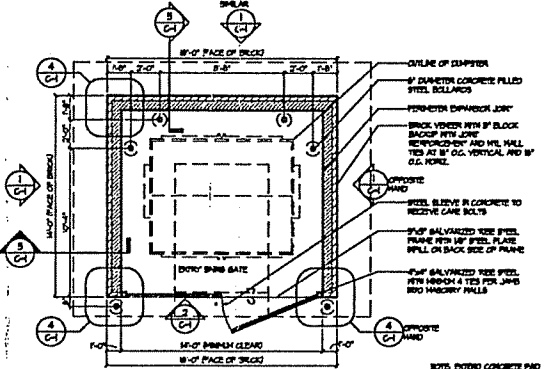
○ BOLLARD DETAIL
SCALE: 1/2" = 1'-0"



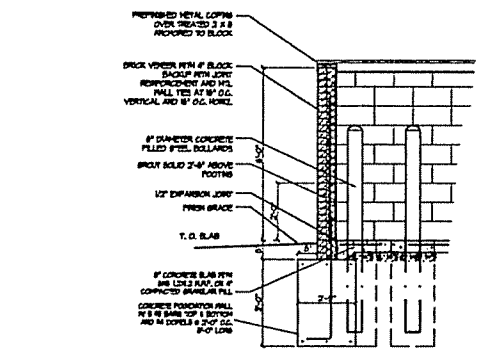
○ MONUMENT SIGN
SCALE: 1/2" = 1'-0"



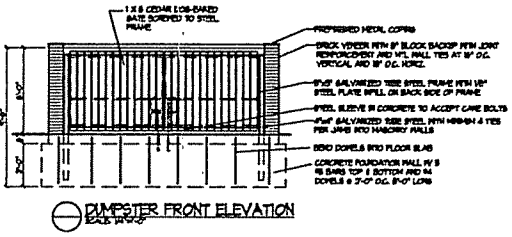
○ DUMPSTER REAR ELEVATION
SCALE: 1/2" = 1'-0"



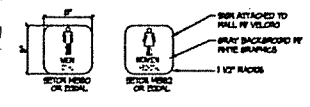
○ DUMPSTER ENCLOSURE PLAN
SCALE: 1/2" = 1'-0"



○ WALL SECTION
SCALE: 1/2" = 1'-0"



○ DUMPSTER FRONT ELEVATION
SCALE: 1/2" = 1'-0"

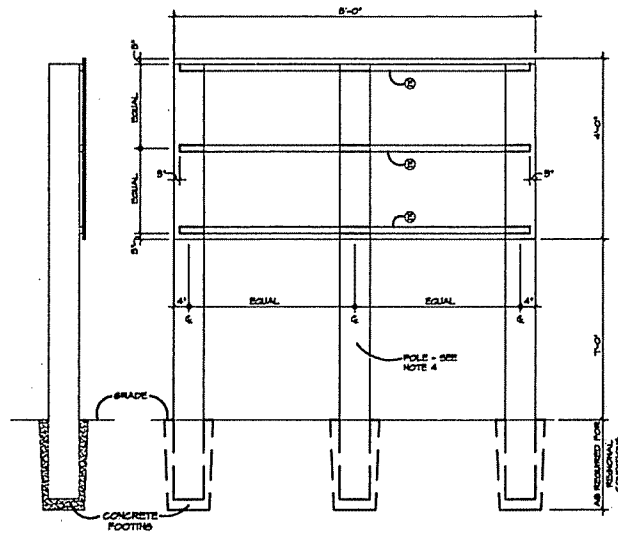


○ PUBLIC RESTROOM SIGNAGE
SCALE: 1/2" = 1'-0"

CAMBRIA SUITES

SMALL LINE SCRIPT - UPPERCASE
GRAPHIC LAYOUT FOR BUILDING MOUNTED SIGNS
 SCALE: 1/2" = 1'-0"
 NOTES:
 1. LETTER HEIGHTS PMS-425 GREY
 2. LETTER FACE WITH CLEAR RED NEON ON LIGHT COLORED BUILDING BACKGROUND

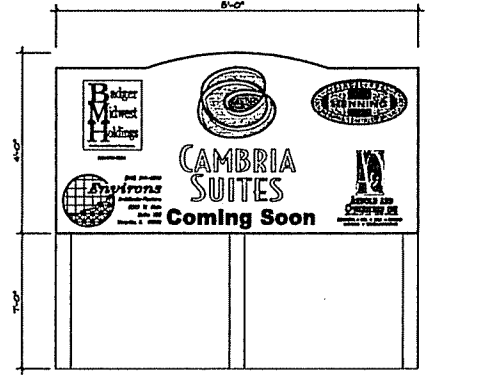
NOTES:
 1. ALL LETTER FABRICATION AND INSTALLATION SPACING TO BE MADE FROM A FULL SIZE PATTERN MADE FROM A PHOTOGRAPHIC PRINT. DO NOT USE THE DRAWING TO MAKE PATTERNS.
 2. PLEASE COORDINATE SIGNAGE LOCATIONS AND POWER REQUIREMENTS WITH THE ARCHITECT.



○ REAR ELEVATION
NOT TO SCALE

○ SECTION
NOT TO SCALE

- NOTES:
- CONTRACTOR TO FURNISH STRUCTURE AND PROVIDE ALTERNATE PRICE FOR SIGN FACE.
 - SIGN SURFACE SHALL BE EXTERIOR GRADE PLYWOOD WITH MEDIUM DENSITY OVERLAY, 1/4" MIN. THICKNESS. INSTALL PREFABRICATED VINYL SIGN FACE MATERIAL OR HAVE PROFESSIONALLY PAINTED FRONT & BACK. FACE SHALL BE ENAMEL ON 3/8" HARDENED GRADE PLYWOOD. COLORS AS INDICATED ON FRONT ELEVATION THIS SHEET.
 - USE 1/2" GALVANIZED COPPING NAILS TO FASTEN SIGN FACE TO STRUNGERS.
 - USE 1" DIAMETER POLES OR 4" x 4" POLES AND 2" x 4" STRUNGERS E.
 - THIS SIGN MAY ONLY BE DISPLAYED UNTIL THE BUILDING IS 40 PERCENT OCCUPIED OR UNTIL 12 MONTHS AFTER INITIAL OCCUPANCY, AFTERWHICH THEY MUST BE REPLACED BY LEASING SIGNS.
 - PROVIDE MINIMUM 20'-0" SETBACK FROM THE FACE OF THE CURB.
 - ONLY 1/4 ONE SIGN PER STREET FRONTAGE IS ALLOWED, WITH A MAXIMUM OF TWO SIGNS PER ZONING LOT.



○ FRONT ELEVATION - PROJECT SIGN
NOT TO SCALE

- COLORS:
- CARTOON AND LETTERS SHALL BE PAINTED WHITE.
 - BASE COLORS SHALL BE AS INDICATED ABOVE.
 - WOOD POSTS SHALL BE PAINTED TO MATCH PANTONE 642S ENAMEL.

8170 JIM HARR
Ernst & Young
 ARCHITECTS/PLANNERS
 1000 15th Street, Suite 1100
 Minneapolis, MN 55402

JOB NO.
05114

DATE:
MARCH 21, 2006
REVISED:

CAMBRIA SUITES

A NEW HOTEL FOR:
CAMBRIA SUITES
 EASTPARK BOULEVARD AND WEST TERRACE
 MADISON, WISCONSIN
SITE DETAILS AND SIGNAGE

SHEET
A2.2

© 2006 ERNST & YOUNG ARCHITECTS/PLANNERS ALL RIGHTS RESERVED.