

Partition Detail Number
 P-7 See Sheet 9.2 For Partition Types

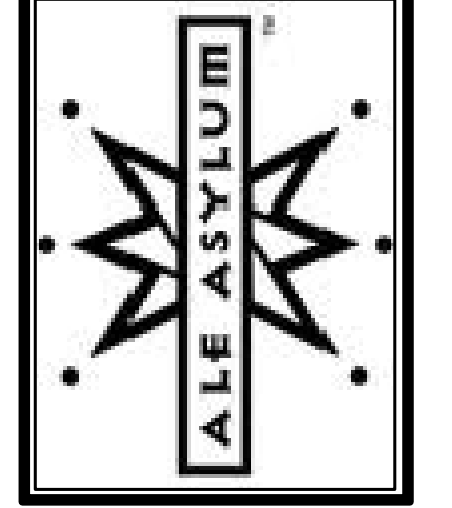
- ⊗ = Safety & Buildings Approved Exit Light w/ Battery Backup, LED, Green Color
- ↔ = Safety & buildings Approved Emergency Exit Path Light w/ Battery Backup

Total Building Area:
 40,668 sf This Level

Overall Floor Plan - Main Level

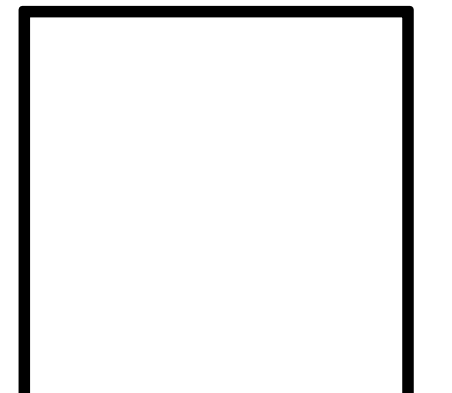
3/32" = 1'-0"

New Facility Location:
 2002 Pankratz Street
 Madison, WI



Construction Services, Inc.
 639 S. Main St. Suite 103
 DeForest, WI 53532
 (608) 846-1575
 (608) 846-1577 Fax

Transcend Architects & Engineers
 395 East Main Street
 Sun Prairie, WI 53590
 (877) 688-3061 toll-free
 (608) 825-2222 voice
 (608) 825-2220 fax
 www.transcend-arch.com



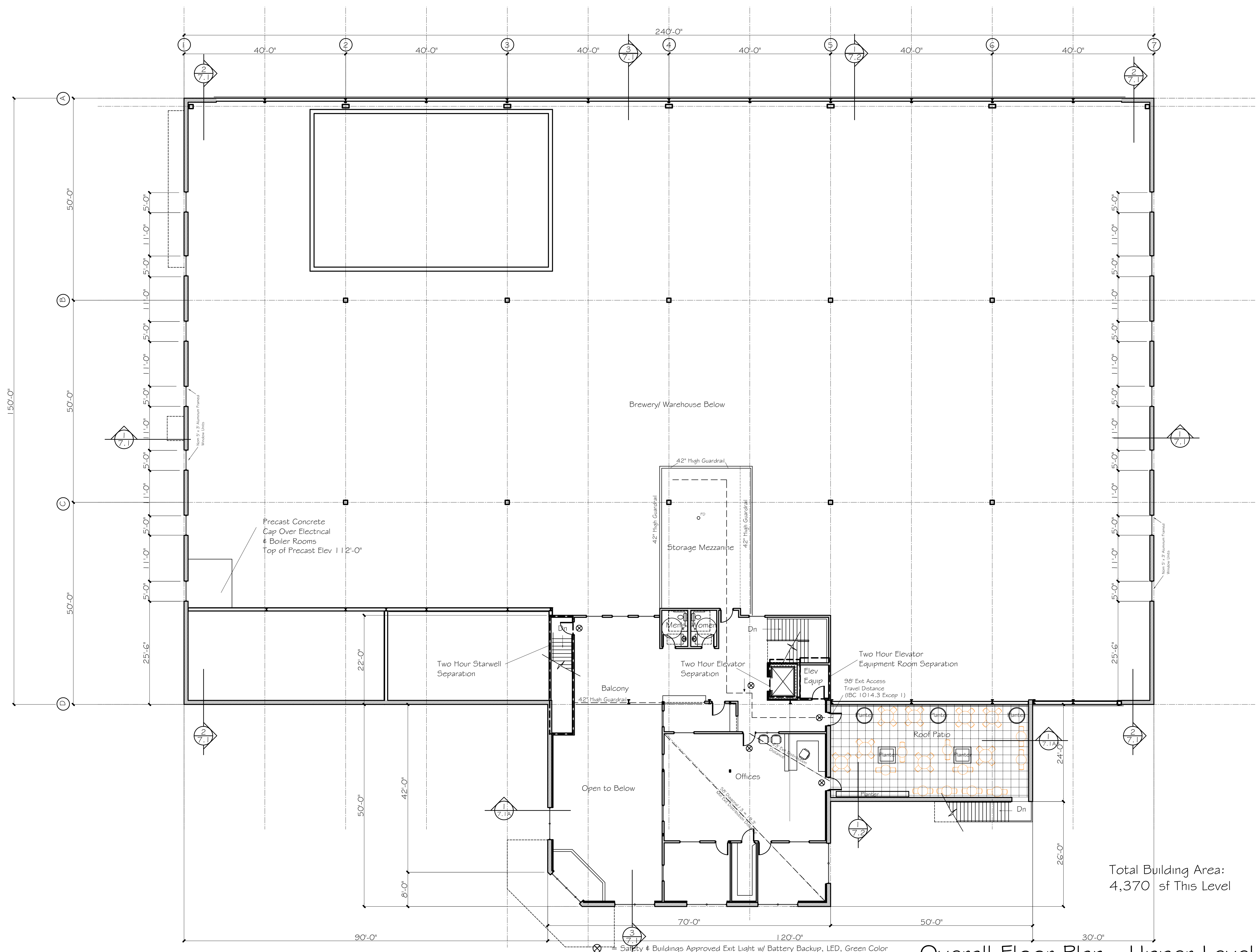
PLAN NORTH

OVERALL FLOOR PLAN
 Main Level
 Scale as Noted

REVISIONS:
 Submitted to City Foundation
 01/11/2011
 Registered for City Plan Review
 Registered to City Plan Review
 12-28-2011
 Revisions: 1-6-2012
 Added Outdoor Seating Layout

KWV
 30-Aug 2011 | 2011-1-21

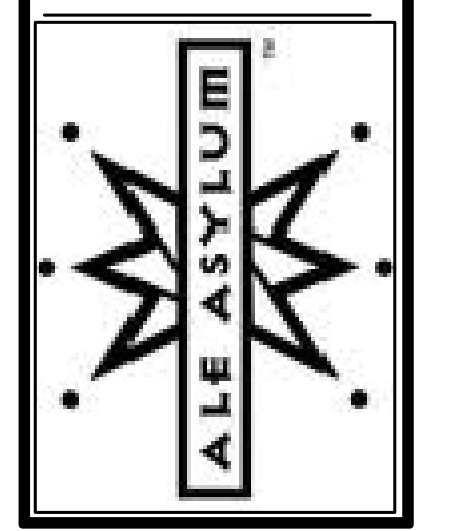
6.1



Total Building Area:
4,370 sf This Level

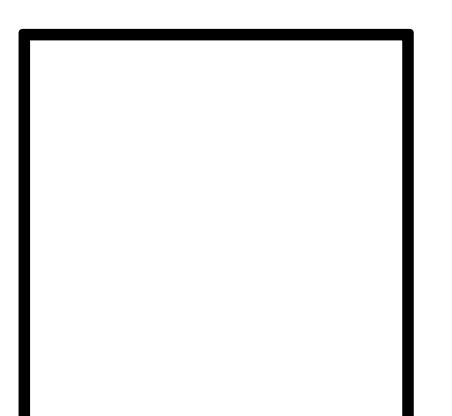
Overall Floor Plan - Upper Level
3/32" = 1'-0"

New Facility Location:
2002 Pankratz Street
Madison, WI



Construction Services, Inc.
639 S. Main St. Suite 103
DeForest, WI 53532
(608) 846-1575
(608) 846-1577 Fax

Transcend Architects & Engineers
395 East Main Street
Sun Prairie, WI 53590
(877) 688-3061 toll-free
(608) 825-2222 voice
(608) 825-2220 fax
www.transcend-arch.com



OVERALL FLOOR PLAN
Upper Level

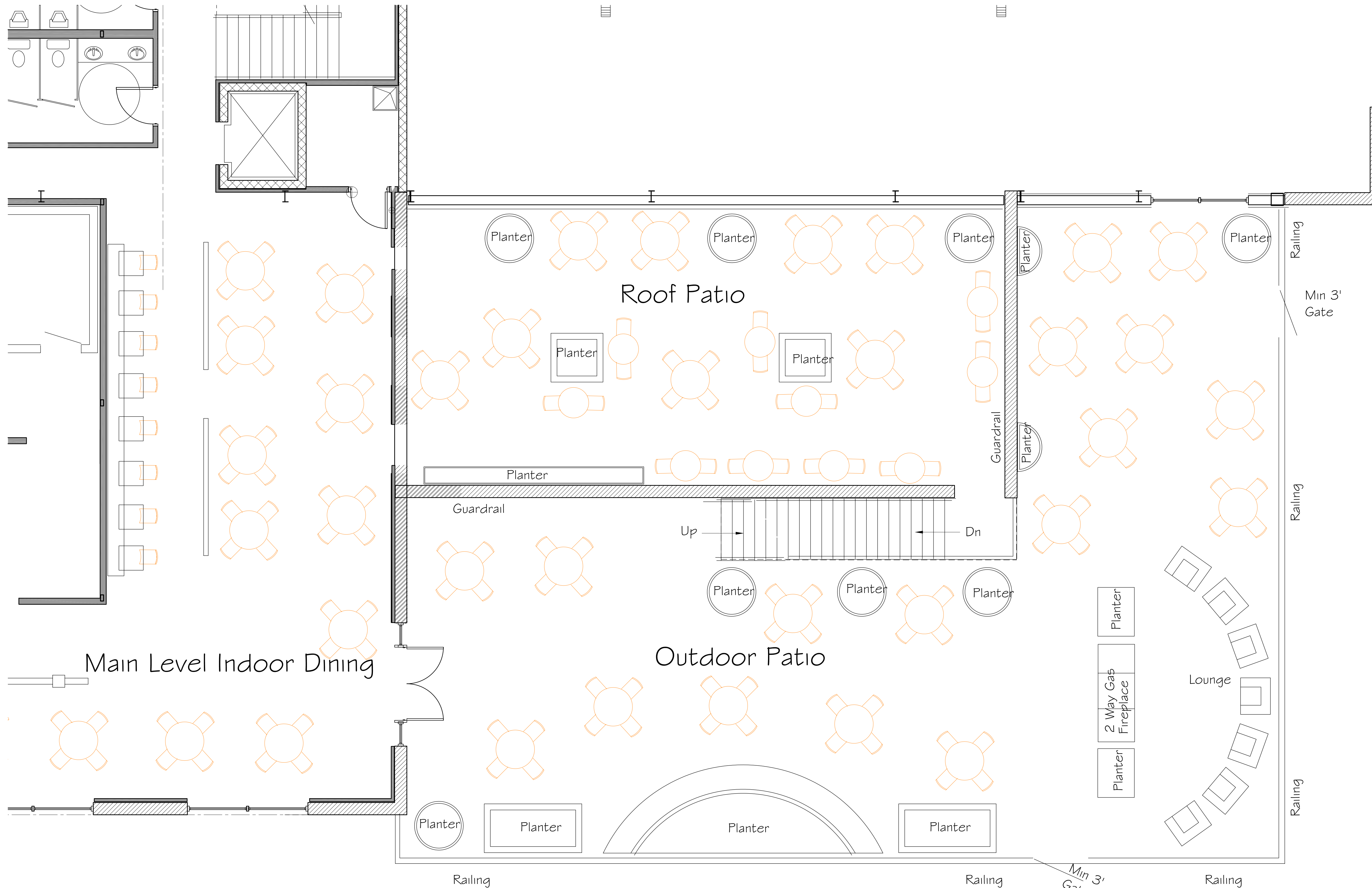
Scale as Noted

REVISIONS:
Submitted to City Foundation
01/11/2011
Approved for City Plan Review
Resubmitted to City Plan Review
12/28/2011
Revisions: 1-6-2012
Address Outdoor Seating Layout 2-2-2012

KWV
30-Aug 2011 | 2011-21

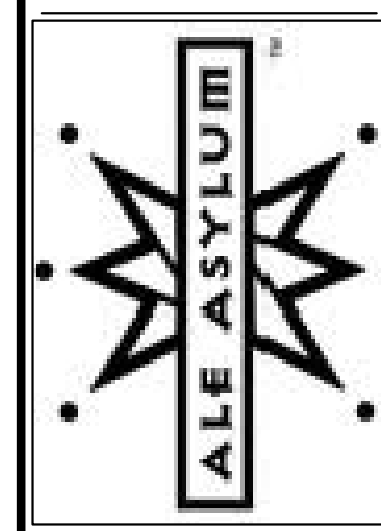
6.2

NO REPRODUCTION OF THESE PLANS OR THE DESIGNS CONTAINED HEREIN, SHALL BE MADE WITHOUT EXPRESS WRITTEN CONSENT OF TRANSCEND ARCHITECTS AND ENGINEERS.



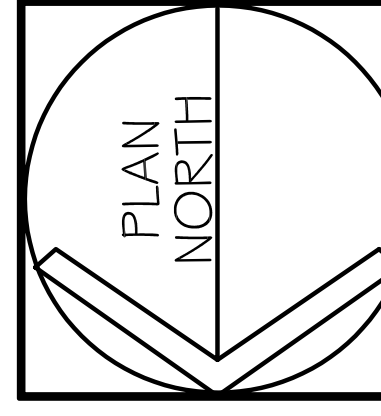
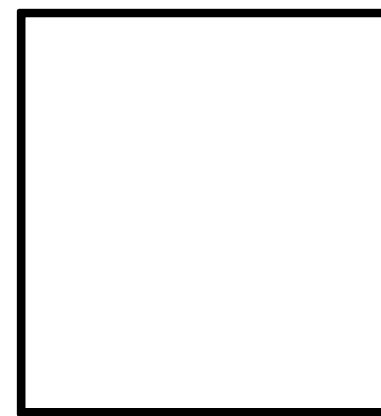
Patio Seating Plan
 1/4" = 1'-0"

New Facility Location:
 2002 Pankratz Street
 Madison, WI



Construction Services, Inc.
 639 S. Main St. Suite 103
 DeForest, WI 53532
 (608) 846-1575
 (608) 846-1577 Fax

Transcend Architects & Engineers
 395 East Main Street
 Sun Prairie, WI 53590
 (877) 688-3061 toll-free
 (608) 825-2222 voice
 (608) 825-2220 fax
 www.transcend-arch.com



Patio Seating Plan
 Scale as Noted

REVISIONS:
 Submitted to City Foundation
 03/11/11
 Submitted to City Plan Review
 12/16/2011
 Resubmitted to City Plan Review
 12/20/2011
 Revisions 1-5-2012

KWV
 30-Aug 2011 | 2011-21

6.7

LANDSCAPE WORKSHEET

I. NUMBER OF TREES REQUIRED:

Number of Parking Stalls 150 Stalls
 Total Square Footage of Storage Area / 300 SF 0
 Total 11 Trees

Number of Canopy Shade Trees Required (2'-2 1/2' cal)

II. NUMBER OF LANDSCAPE POINTS REQUIRED:

Number of landscape Points based on 150 Parking Stalls 652 Points
 Number of landscape Points based on 3 Loading Bearths 225 Points
 Total 877 Points

TABULATION OF POINTS AND CREDITS

ELEMENT	POINT VALUE	QUANTITY	POINTS ACHIEVED	CREDITS	
				QUANTITY	POINTS
Canopy Tree: 2'-2 1/2'	35	13	455	2	70
Deciduous Shrub	2	108	216	0	0
Evergreen Shrub	3	13	39	0	0
Decorative Wall/Fence per 10 LF	5	0	0	0	0
Earth Berm per 10 LF: 30" or 15"	5 or 2	0	0	0	0
Evergreen Tree: 3' Ht.	15	12	180	0	0
Canopy Tree/Small Tree: 1'-2 1/2'	15	10	150	0	0
Sub Totals				1040	+
				TOTAL POINTS PROVIDED 1110	

Notes: Shredded Bark Mulch in Planting Beds with Aluminum Edging,
 Shredded Bark Mulch Tree Rings and in Parking Lot Islands

PLANT LEGEND

Botanical name	Common Name	Size	Root	Quantity
SHADE TREES				
<i>Gleditsia triacanthos inermis 'Harve'</i>	Northern Acclaim Honeylocust	2 1/2' Cal.	B&B	6
<i>Tilia americana 'Redmond'</i>	Redmond Linden	2 1/2' Cal.	B&B	9
<i>Quercus x schuetti</i>	Schuttles Oak	2 1/2' Cal.	B&B	3
<i>Ulmus americana 'Princeton'</i>	Princeton American Elm	2 1/2' Cal.	B&B	6
EVERGREEN TREES				
<i>Picea pungens</i>	Green Spruce	3' Ht.	B&B	6
<i>Picea glauca var. densata</i>	Blackhills Spruce	5' Ht.	B&B	5
<i>Pinus strobus</i>	White Pine	3' Ht.	B&B	1
ORNAMENTAL TREES				
<i>Amelanchier canadensis</i>	Serviceberry	1-1 1/2'	B&B	6
<i>Carpinus caroliniana</i>	American Hornbeam	1-1 1/2'	B&B	1
<i>Syringa reticulata 'Ivory Silk'</i>	Ivory Silk Japanese Tree Lilac	1-1 1/2'	B&B	3
SHRUBS				
<i>Aronia melanocarpa var. elata</i>	Glossy Black Chokeberry	24"	Pot	11
<i>Aronia arbutifolia 'Brilliantissima</i>	Brilliant Red Chokeberry	18"	Pot	15
<i>Clethra alnifolia 'Ruby Spice'</i>	Ruby Spice Clethra	18"	B&B	18
<i>Cornus stolonifera 'Farrow'</i>	Arctic Fire Dogwood	18"	B&B	13
<i>DierVilla lonicera</i>	Dw Bushhoneysuckle	3 gal.	CONT.	43
<i>Taxus x media 'Tauton'</i>	Taunton Yew	24" Ht.	B&B	13
<i>Viburnum trilobum</i>	Am. Cranberrybush Viburnum	4" Ht.	B&B	8
PERENNIALS & GROUNDCOVER				
<i>Astilbe 'Fanal'</i>	Fanal Astilbe	1 gal	CONT.	28
<i>Rudbeckia hirta</i>	Black-Eyed Susan	1 gal	CONT.	12
<i>Sporobolus heterolepis</i>	Prairie Dropseed	1 gal	CONT.	12
BIORETENTION MIX 8550 sq ft at 12" on center				
<i>Anthropogon gerardii</i>	Big Bluestem	2"	Plug	1268
<i>Carex comosa</i>	Bottlebrush Sedge	2"	Plug	1268
<i>Carex hystericina</i>	Porcupine Sedge	2"	Plug	1268
<i>Carex vulpinoidea</i>	Fox Sedge	2"	Plug	1268
<i>Elymus canadensis</i>	Canada Wild Rye	2"	Plug	1268
<i>Sorghastrum nutans</i>	Indiangrass	2"	Plug	1268
<i>Spartina pectinata</i>	Prairie Cordgrass	2"	Plug	1268



Northwest View



ALE ASYLUM

2/05/12 711309-01



Northwest View

