

PROJECT: 2/10/2011

# STEINHAFELS FURNITURE MADISON EAST

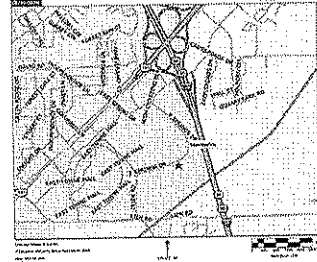


401 Denney Way # Madison, WI 53717  
 PO BOX 882005 1111 DENNEY WAY  
 MADISON, WI 53788-2005

STEINHAFELS FURNITURE STORE

MADISON EAST STORE, LLC  
 7301 HURON CITY HWY F  
 WAUKESHA, WI 53186-1602

SITE LOCATION MAP



ADDRESS:  
 2109 EAST SPENCER DRIVE  
 MADISON, WISCONSIN 53704



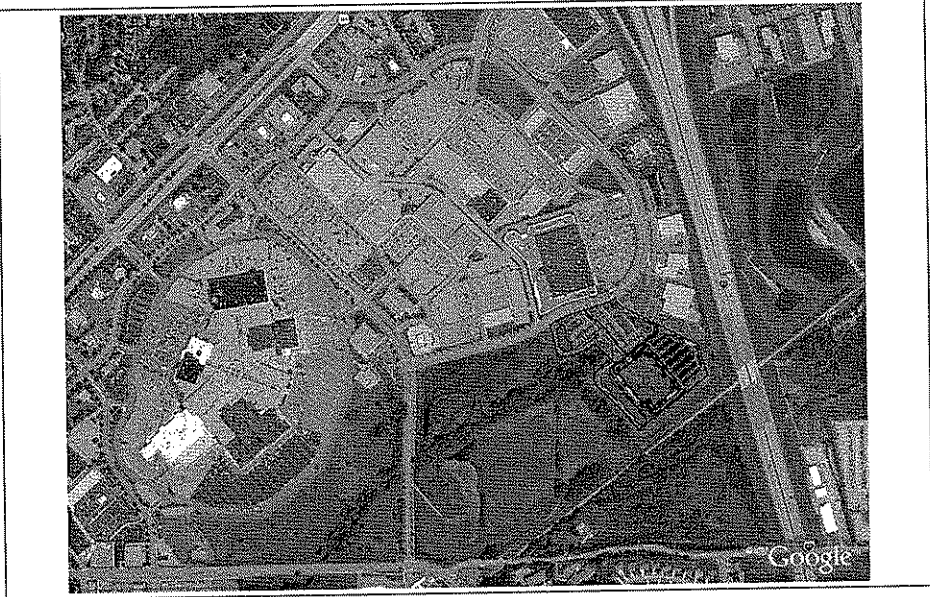
PROJECT DIRECTORY

**DESIGN-BUILDER**  
 ICONICA, INC.  
 901 DENNEY WAY  
 MADISON, WISCONSIN 53717  
 PHONE: (608) 664-3500  
 FAX : (608) 664-3535

**OWNER**  
 STEINHAFELS FURNITURE  
 PAUL SCHOENBERG  
 W231 N11013 CNTY HWY F  
 WAUKESHA, WISCONSIN 53186

**CIVIL ENGINEER**  
 ARNOLD & O'SHERIDAN  
 1111 DENNEY WAY, SUITE 200  
 MADISON, WISCONSIN 53717  
 PHONE: (608) 821-8500  
 FAX : (608) 821-8501

**LANDSCAPE ARCHITECT**  
 PAUL SCHOENBERG  
 LANDSCAPE ARCHITECT LLC  
 13 RED MAPLE TRAIL  
 MADISON, WISCONSIN 53717  
 PHONE: (608) 626-0032



BUILDING CODE

BID PACKAGES

INDEX OF DRAWINGS

SHEET	TITLE	SHEET	TITLE	SHEET	TITLE	SHEET	TITLE	SHEET	TITLE	SHEET	TITLE	SHEET	TITLE
ARCHITECTURAL													
A001	CONTR SHEET												
A002	AND ADVERTISEMENTS PLAN												
A003	SITE PLAN												
A004	PARTIAL SITE PLAN												
A005	PARTIAL SITE PLAN												
A006	PARTIAL SITE PLAN												
A007	PARTIAL SITE PLAN												
A008	SITE VIEWS												
C1.0	GRADING PLAN												
C1.1	PARTIAL GRADING AND EROSION CONTROL PLAN												
C1.2	PARTIAL GRADING AND EROSION CONTROL PLAN												
C1.3	PARTIAL GRADING AND EROSION CONTROL PLAN												
C1.4	PARTIAL GRADING AND EROSION CONTROL PLAN												
C1.5	CONTR SHEET												
C1.6	CONTR SHEET												
C1.7	UTILITY PLAN												
L1.00	LANDSCAPE PLAN												
L1.00.1	PARTIAL LANDSCAPE PLAN												
L1.00.2	PARTIAL LANDSCAPE PLAN												
L1.00.3	PARTIAL LANDSCAPE PLAN												
L1.00.4	PARTIAL LANDSCAPE PLAN												
F001	FIRST FLOOR PLAN												
F001.1	PARTIAL FLOOR PLAN												
F001.2	PARTIAL FLOOR PLAN												
F001.3	PARTIAL FLOOR PLAN												
F001.4	PARTIAL FLOOR PLAN												
F001.5	ROOF PLAN												
E001	ELEVATION ELEVATIONS												
E002	PARTIAL ELEVATION ELEVATIONS												
E003	PARTIAL ELEVATION ELEVATIONS												
ELECTRICAL													
E1.00	ELECTRICAL SITE PLAN												
E1.00.1	PARTIAL ELECTRICAL SITE PLAN												
E1.00.2	PARTIAL ELECTRICAL SITE PLAN												
E1.00.3	PARTIAL ELECTRICAL SITE PLAN												
E1.00.4	PARTIAL ELECTRICAL SITE PLAN												

ISSUE DATES:  
 PLAN CHANGEBOOK: 00-18-00

REVISION DATE:

This document contains confidential information and is intended for the use of the client only. It is not to be distributed, copied, or reproduced without the written consent of the design professional. If you are not the intended recipient, please notify the design professional immediately.

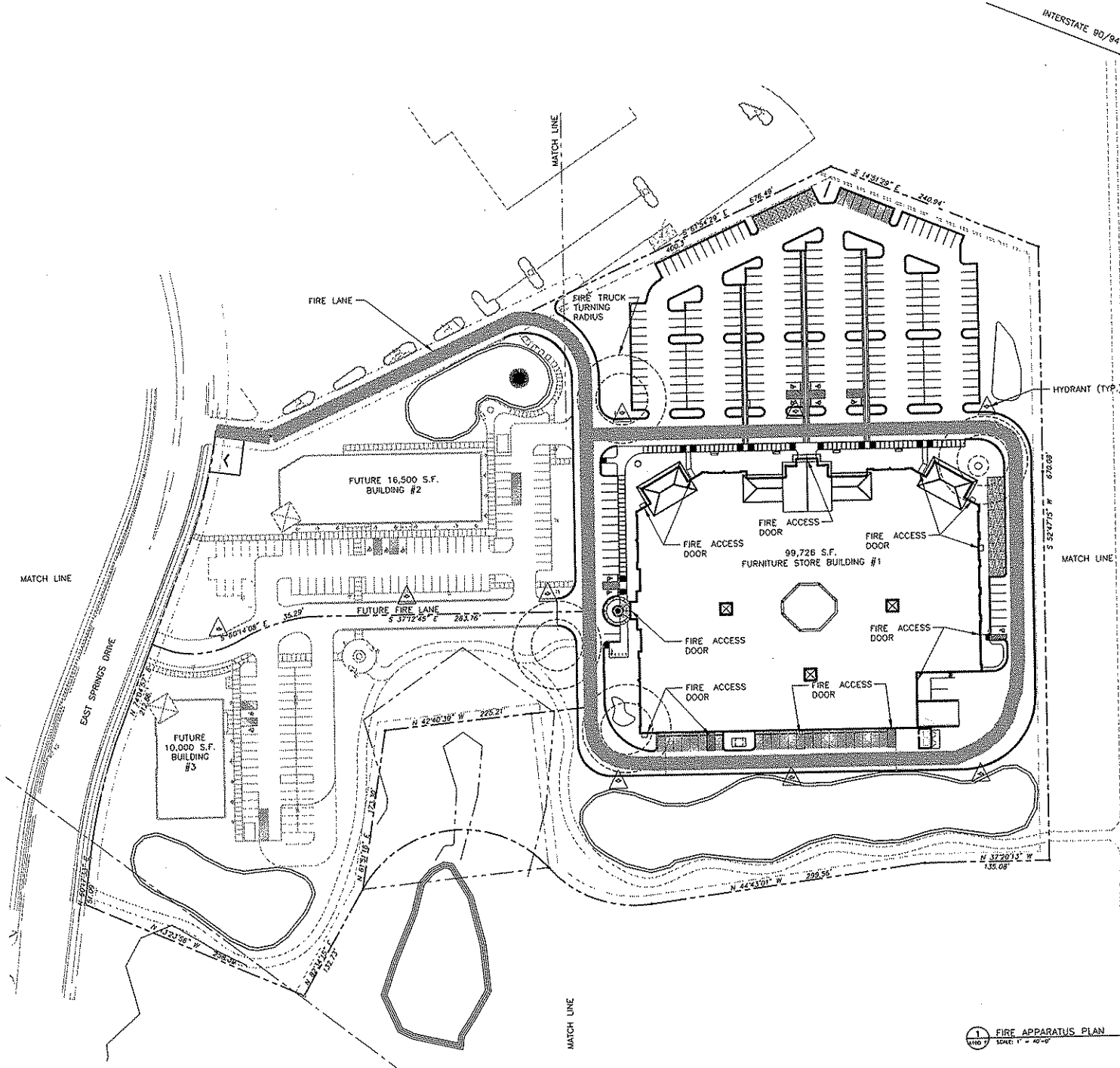
PROJECT #: 20070000

SHEET NUMBER

A001

2008 Iconica, Inc.

DATE: 3/10/2010



1 FIRE APPARATUS PLAN  
SCALE: 1" = 40'-0"



**ICONICA**  
True Design-Build

81 Company Way #1000, Winoona, VT 05140  
TEL: 802.231.8101 FAX: 802.231.9000  
www.iconicad.com

---

**STEINHAFEL'S FURNITURE STORE**

MADISON EAST STORE, LLC  
WEST HIGH CENTURY  
MADISON, VT 05750

---

ISSUE DATE:

---

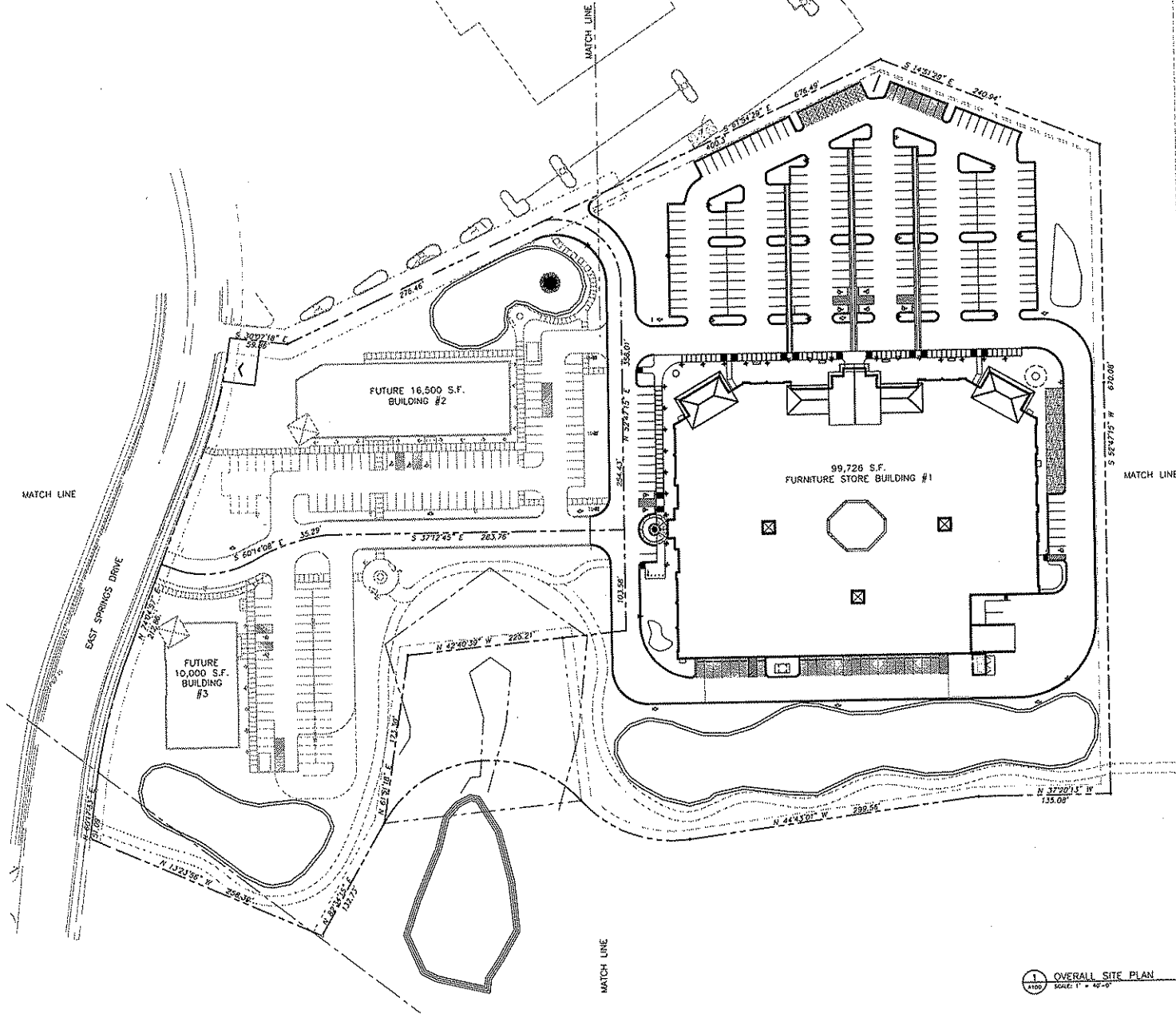
REVISED DATE:

---

PROJECT #: 2010080  
SHEET NUMBER  
**A100 F**

©2010 Iconica, Inc.

BUILDING	Building Area	Stalls	Parking Ratio	Total Site Area	Impervious Surface Area Ratio	F.A.R.
Building #1	99,726 S.F.	(#1) 274	2.7 PER 1,000 S.F.	393,990 S.F.	143,217 S.F. GREEN 36%	99,726/393,990 = .25
Building #2	16,500 S.F.	(#2) 66	3.9 PER 1,000 S.F.	122,621 S.F.	46,388 S.F. GREEN 37%	16,500/122,621 = .13
Building #3	10,000 S.F.	(#3) 38	3.8 PER 1,000 S.F.	111,495 S.F.	78,032 S.F. GREEN 63%	10,000/111,495 = .08
<b>TOTAL</b>	<b>126,226 S.F.</b>	<b>378</b>	<b>(3.0) PER 1,000 S.F.</b>	<b>628,106 S.F.</b>	<b>TOTAL GREENSPACE 264,634 S.F. = 42%</b> <b>TOTAL IMPERVIOUS 237,246 S.F. = 38%</b>	<b>126,226/628,106 = .2</b>



PROJECT: 077 PLUM SITE IMPROVEMENTS

SITE ADDRESS: 11511-11519 EAST SPRINGS DRIVE  
 CITY: MADISON, WISCONSIN

NAME OF PLANNING AGENCY: MADISON CITY ENGINEERING DEPARTMENT  
 ADDRESS: 400 SOUTH PARKWAY  
 CITY: MADISON, WISCONSIN

DATE OF CONSTRUCTION (NEW IMPROVEMENTS OR ADDITIONS):  
 DATE OF EXPIRY: THIS PROJECT IS VALID FOR 12 MONTHS FROM DATE OF ISSUANCE OF PERMITS.

NUMBER OF SINGLE STALL SPACES: 378 (AT BUILDING #1)  
 66 (AT BUILDING #2)  
 38 (AT BUILDING #3)

NUMBER OF PARKING SPACES:  
 SINGLE: 378  
 DOUBLE: 0

PARKING CAPACITY OF SITE: 378 PER 1,000 S.F.

TOTAL IMPERVIOUS: SEE NOTES

NUMBER OF TREES SHOWN: SEE LANDSCAPE PLAN

**LEGEND**

- CONCRETE FLOORS
- CONCRETE STAIRCASE RAMP (CONCRETE)
- 100% ASPHALT 12" COARSE
- PERVIOUS PAVEMENT
- PERMEABLE PAVER SYSTEM
- CONCRETE CURB AND OTHER
- PILE HEADS
- LOW POLE
- PERIMETER BOUND

1 OVERALL SITE PLAN  
 SCALE: 1" = 40'-0"



**STEINHAFFEL'S FURNITURE STORE**  
 EAST SPRINGS DRIVE  
 MADISON, WI

DATE: \_\_\_\_\_

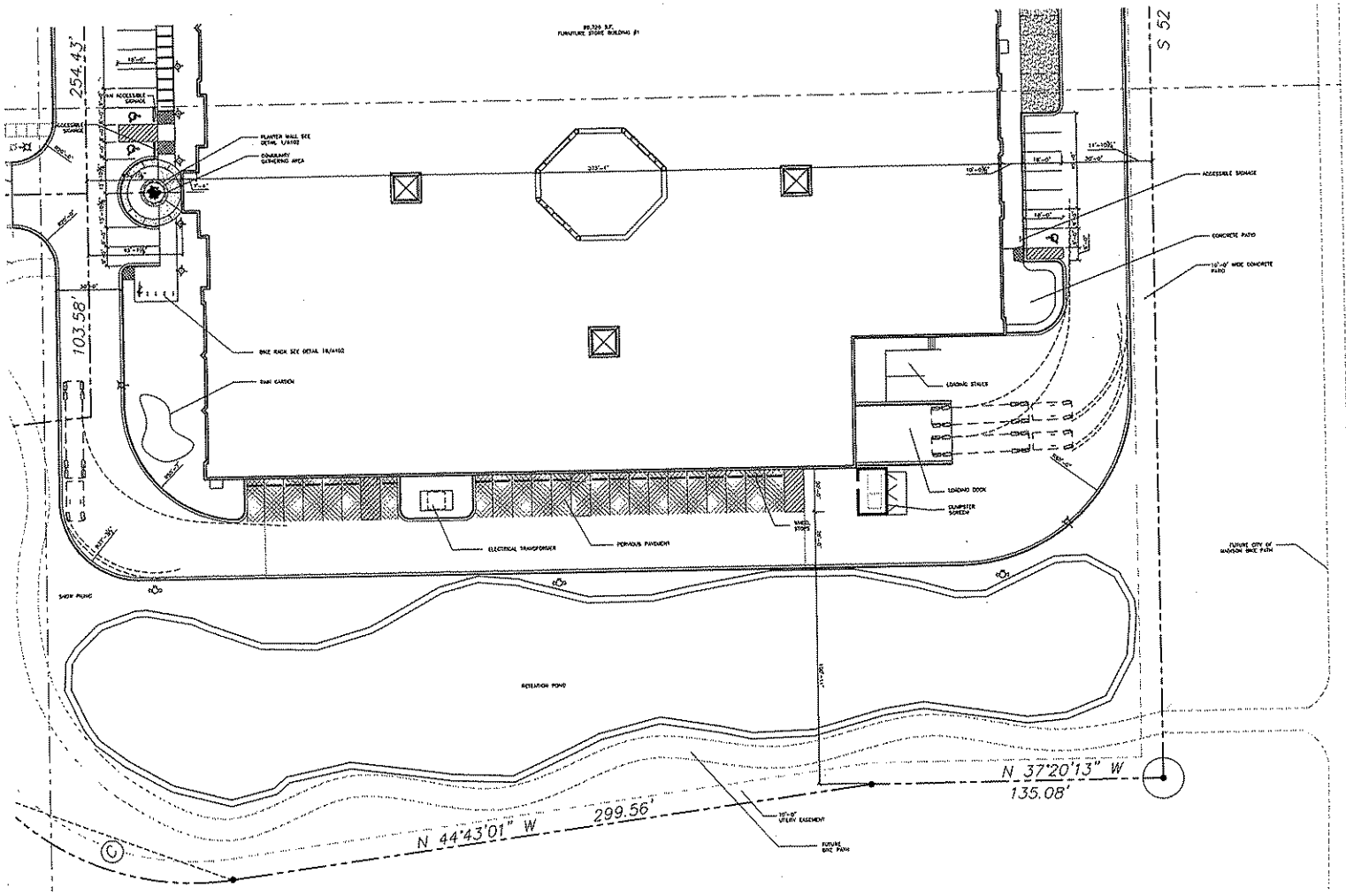
BY: \_\_\_\_\_

DATE: \_\_\_\_\_

PROJECT #: 201000  
 SHEET NUMBER  
**A100**



PROPOSED BUILDING



101 George Way | Madison, WI 53703  
 781.344.0000 | www.iconica.com

**STEINHAFELS FURNITURE STORE**  
 EAST MADISON, WISCONSIN

MADISON EAST STORE, LLC  
 2021 HUNTS COUNTRY WAY  
 WAUWATONA, WI 53095

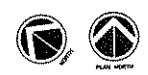
ISSUE DATE:	
REVISED DATE:	

101 George Way | Madison, WI 53703  
 781.344.0000 | www.iconica.com

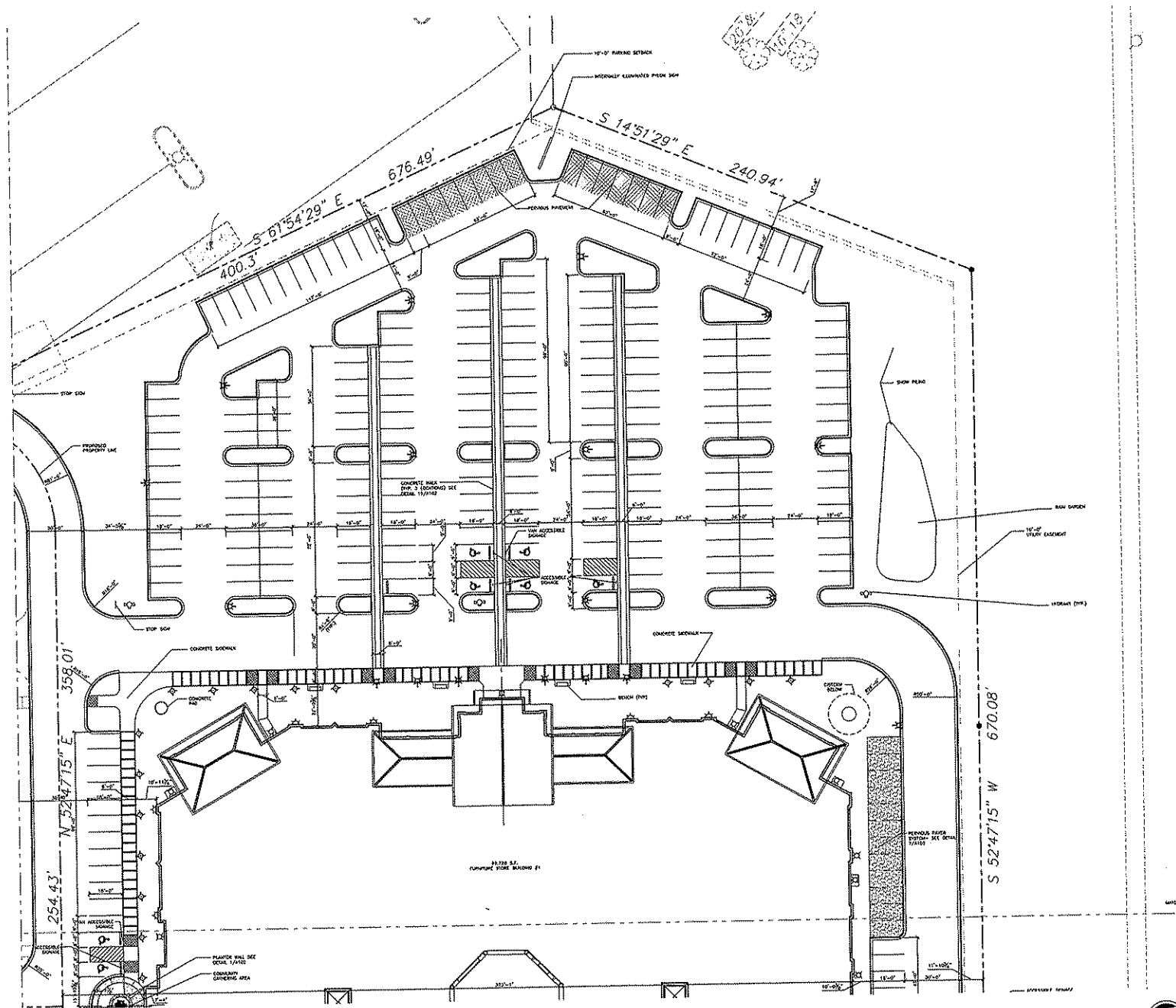
PROJECT # 2021030  
 SHEET NUMBER  
**A100.1**

© 2021 Iconica, Inc.

**1 PARTIAL SITE PLAN**  
 SCALE: 1" = 20'-0"




REVISIONS



1 PARTIAL SITE PLAN  
SCALE: 1"=20'-0"





541 Pershing Way | Madison, WI 53707  
Tel: 608.261.4575 | Fax: 608.261.4576  
www.iconicawisconsin.com

---

**STEINHAFELS FURNITURE STORE**  
815 EAST MAIN STREET  
MADISON, WI

MADISON EAST STORE, LLC  
2321 NORTH CITY STREET  
WISCONSIN, WISCONSIN 53704

---

ISSUE DATE: \_\_\_\_\_

REVISIONS:

NO.	DATE	DESCRIPTION

APPROVAL:

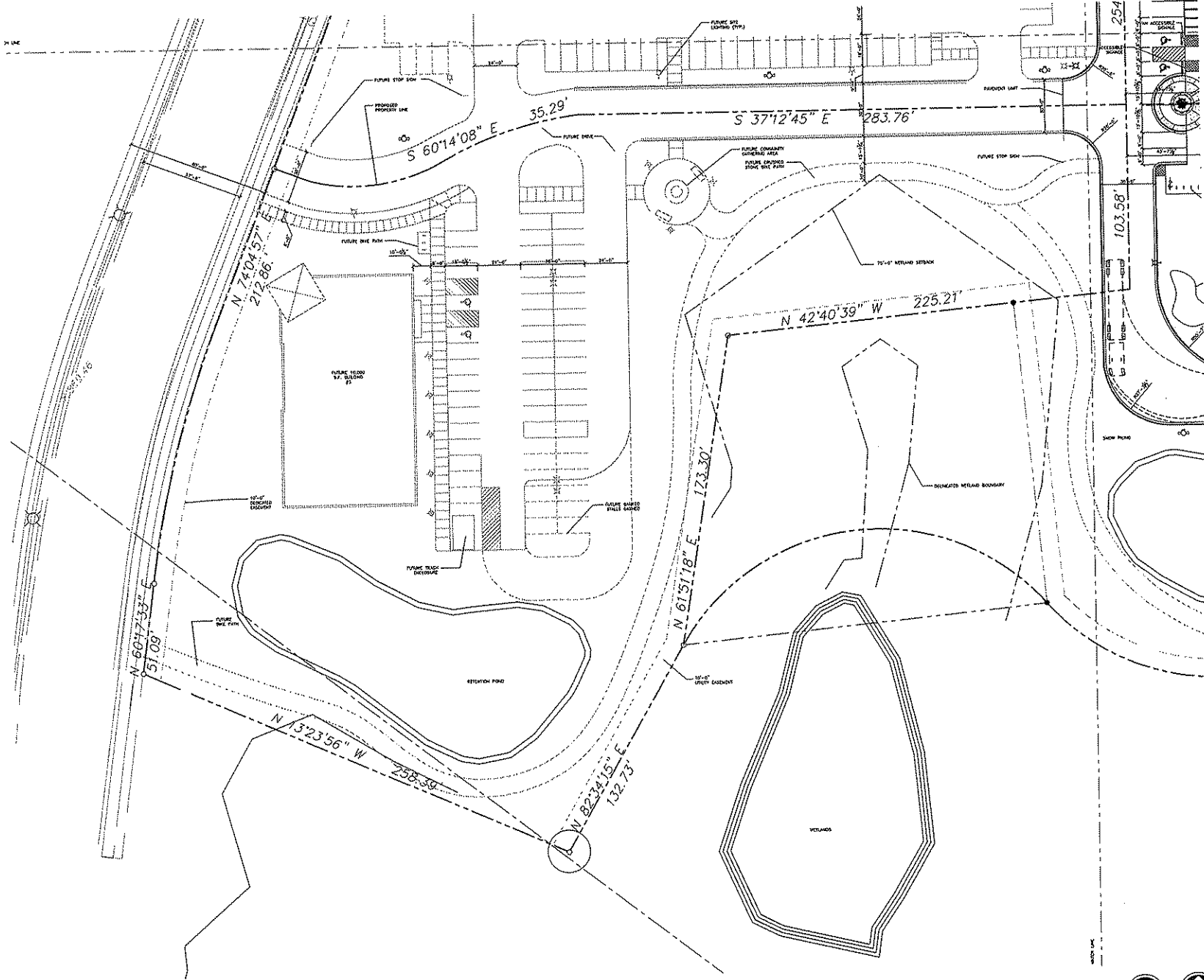
--	--

---

This document contains confidential and proprietary information of Iconica. It is to be used solely for the project and location identified herein. All other uses, reproduction, distribution, or disclosure of this information is prohibited without the prior written consent of Iconica.


---

PROJECT # 2002000  
SHEET NUMBER  
**A100.2**  
2002 Iconica Inc.



1 PARTIAL SITE PLAN  
SCALE: 1/8" = 1'-0"



  
**ICONICA**  
 True Design-Build

---

103 Parkway West, # 200, Madison, WI 53703  
 Tel: 608.258.5353  
 Fax: 608.258.5354  
[www.iconica.com](http://www.iconica.com)

---

**STEINHAFER'S FURNITURE STORE**

MADISON, WI

---

MADISON EAST STORE, LLC  
 1333 INDIAN CREEK HWY E  
 EAST CROSSROADS  
 MADISON, WI 53704

---

ISSUE DATE: \_\_\_\_\_

REVISED DATE: \_\_\_\_\_

This document is the intellectual property of Iconica. It is intended for the use of the client and is not to be distributed, copied, or reproduced without the written consent of Iconica. All rights reserved.

---

PROJECT # 2010100

SHEET NUMBER

**A100.3**

© 2010 Iconica, Inc.

**STEINHAFEL'S FURNITURE STORE**

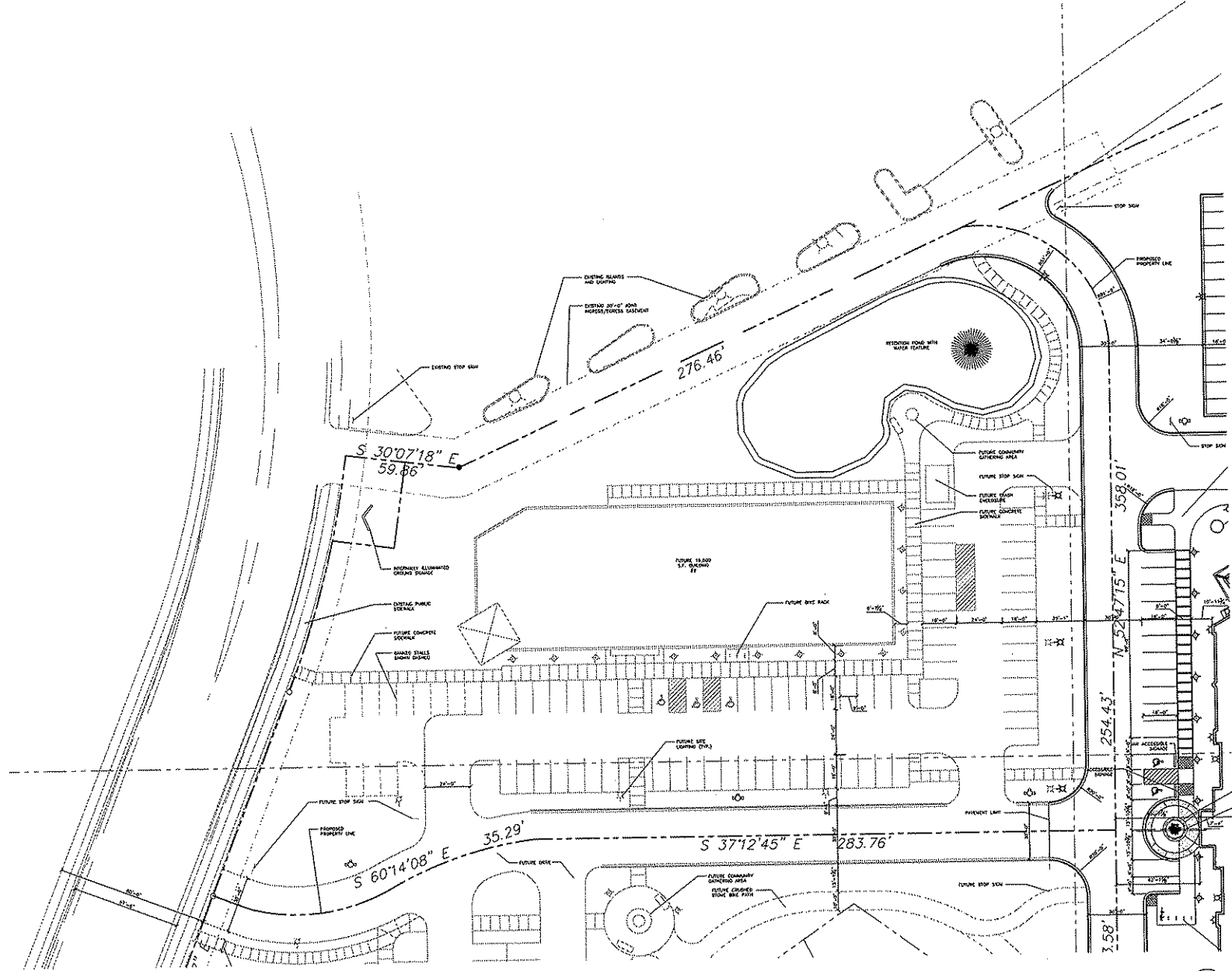
MADISON EAST STORE, LLC  
 WEST NORTH GARY HWY F  
 WATERLOO, WISCONSIN 53592  
MADISON, WI


ISSUE DATES:


PROJECT DATE:

This document and the contents hereof are the property of Iconica, Inc. and are loaned to the client for the specific project only. It is not to be distributed, copied, or used for any other purpose without the written consent of Iconica, Inc.

PROJECT #: 20070095  
 SHEET NUMBER  
**A100.4**




**PARTIAL SITE PLAN**  
 SCALE: 1"=20'-0"



PROJECT: STEINHAFEL'S FURNITURE STORE

DATE: 06/24/08

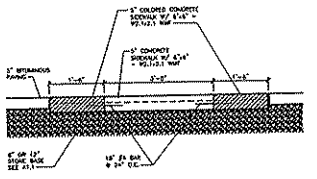
ISSUE DATE:

REVISION DATE:

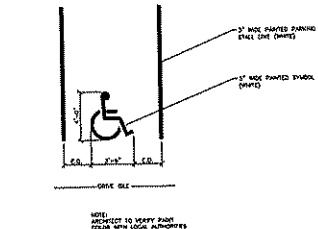
This document contains confidential information of the owner. It is to be used only for the project for which it was prepared. It is not to be distributed, copied, or otherwise used without the written consent of the owner.

PROJECT #: 200800  
SHEET NUMBER  
**A102**

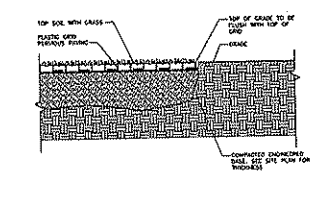
2008 Iconica, Inc.



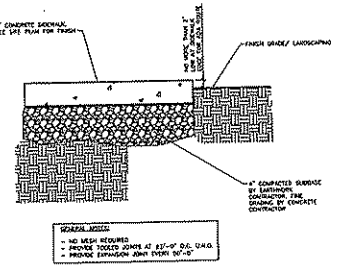
**15 PARKING LOT SIDEWALK**  
SCALE: 3/4" = 1'-0"  
000002.00



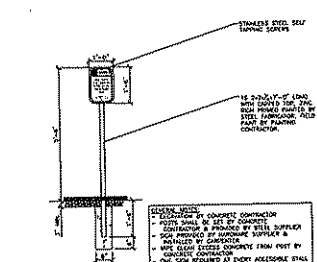
**11 ACCESSIBLE PARKING STALL STRIPING**  
SCALE: NONE  
027030.00.001



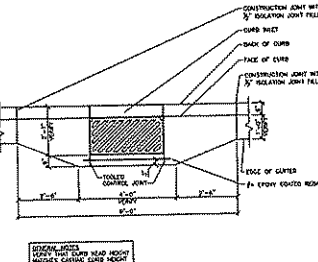
**7 PERVIOUS PAVING TO GRADE**  
SCALE: 1" = 1'-0"  
A102



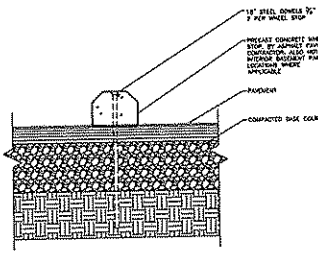
**4 SIDEWALK EDGE**  
SCALE: 1 1/2" = 1'-0"  
027120.00.101



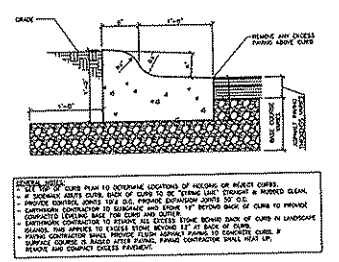
**14 MADISON ACCESSIBLE PARKING SIGN**  
SCALE: 1/2" = 1'-0"  
027030.00.004



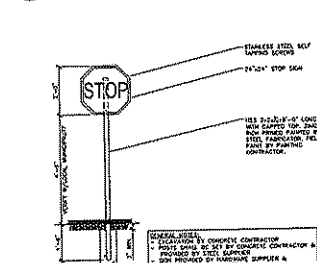
**10 CURB STORM INLET**  
SCALE: 1/2" = 1'-0"  
A102



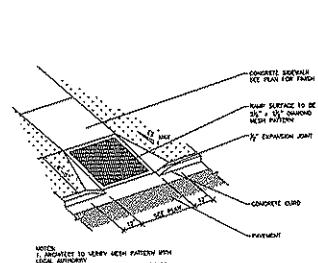
**8 CONCRETE WHEEL STOP**  
SCALE: 1 1/2" = 1'-0"  
027030.00.001



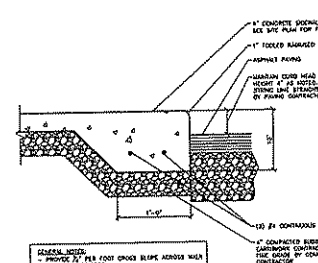
**3 4" CONCRETE REJECT CURB & GUTTER**  
SCALE: 1 1/2" = 1'-0"  
027120.00.003



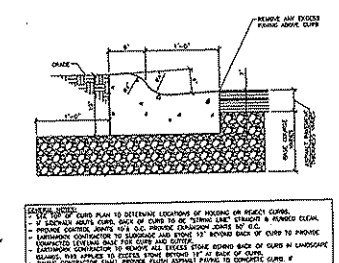
**13 STOP SIGN**  
SCALE: 1/2" = 1'-0"  
027030.00.003



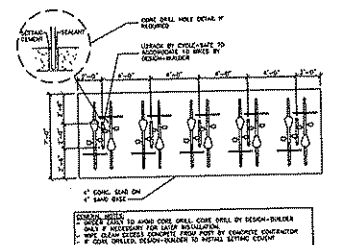
**9 ACCESSIBLE SIDEWALK CURB CUT**  
SCALE: NONE  
027120.00.103



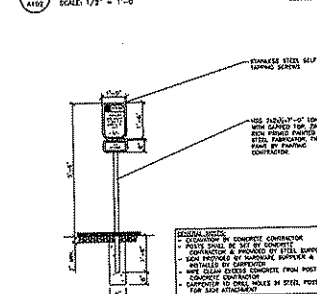
**5 4" THICKENED EDGE SIDEWALK**  
SCALE: 1 1/2" = 1'-0"  
027120.00.103



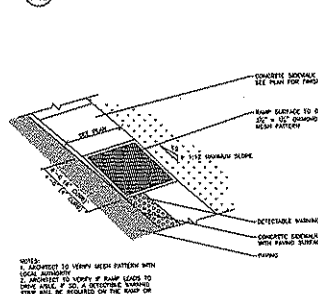
**2 4" CONCRETE HOLDING CURB & GUTTER**  
SCALE: 1 1/2" = 1'-0"  
027120.00.101



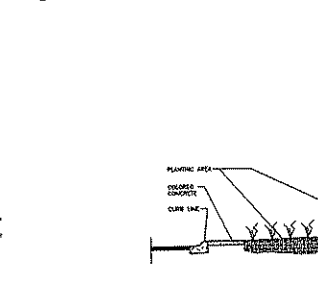
**16 DOUBLE LOADED BIKE RACK PAD**  
SCALE: 1/4" = 1'-0"  
A102



**17 WISCONSIN VAN ACCESSIBLE PARKING SIGN**  
SCALE: 1/2" = 1'-0"  
A102



**6 ACCESSIBLE SIDEWALK RAMP**  
SCALE: NONE  
027120.00.001



**1 PLANTER**  
SCALE: 1/4" = 1'-0"  
A102

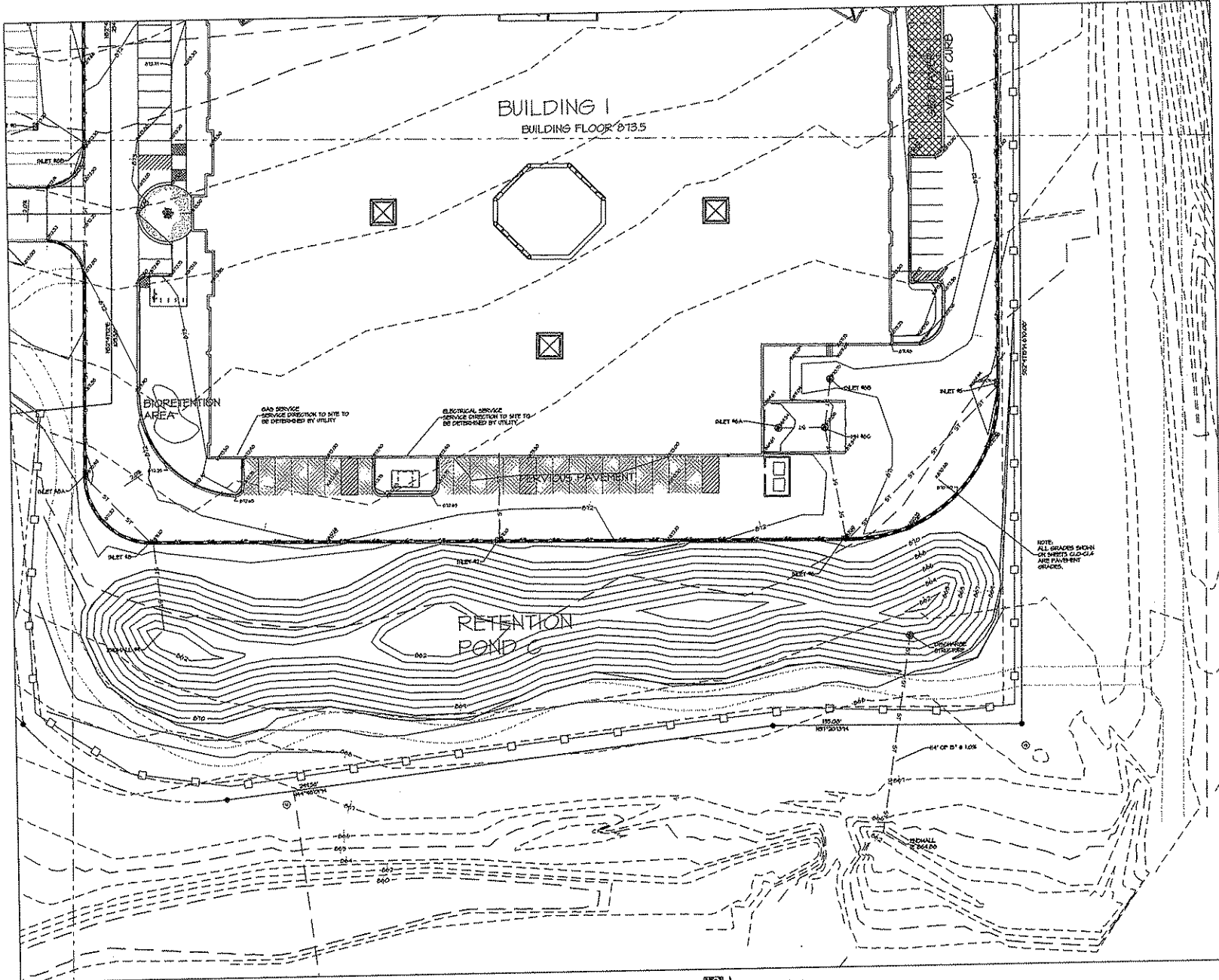
PLAN: 1/4" = 1'-0"

SECTION: 1/2" = 1'-0"





PROJECT DATE: 04/20/09



**ICONICA**  
True Design-Build

100 Commercial Highway, Suite 100  
P.O. Box 100, Suite 100  
Windsor, VT 05090

**STEINHAFELS FURNITURE STORE**  
DESIGNED BY  
JACKSON, VT

**MADISON EAST STORE, LLC**  
1031 INDIAN CHY HWY F  
WINDSOR, VT 05091-1922

ISSUE DATE: \_\_\_\_\_

REVISION DATE: \_\_\_\_\_

REVISION DATE: \_\_\_\_\_

**Schematic Design Phase:**  
This drawing indicates the scope and relationship of the project components. This drawing is not for construction.

This document contains information of a preliminary nature and is intended for informational purposes only. It is not to be used for construction or other purposes without the written consent of the designer. The user assumes all responsibility for the accuracy and completeness of the information.

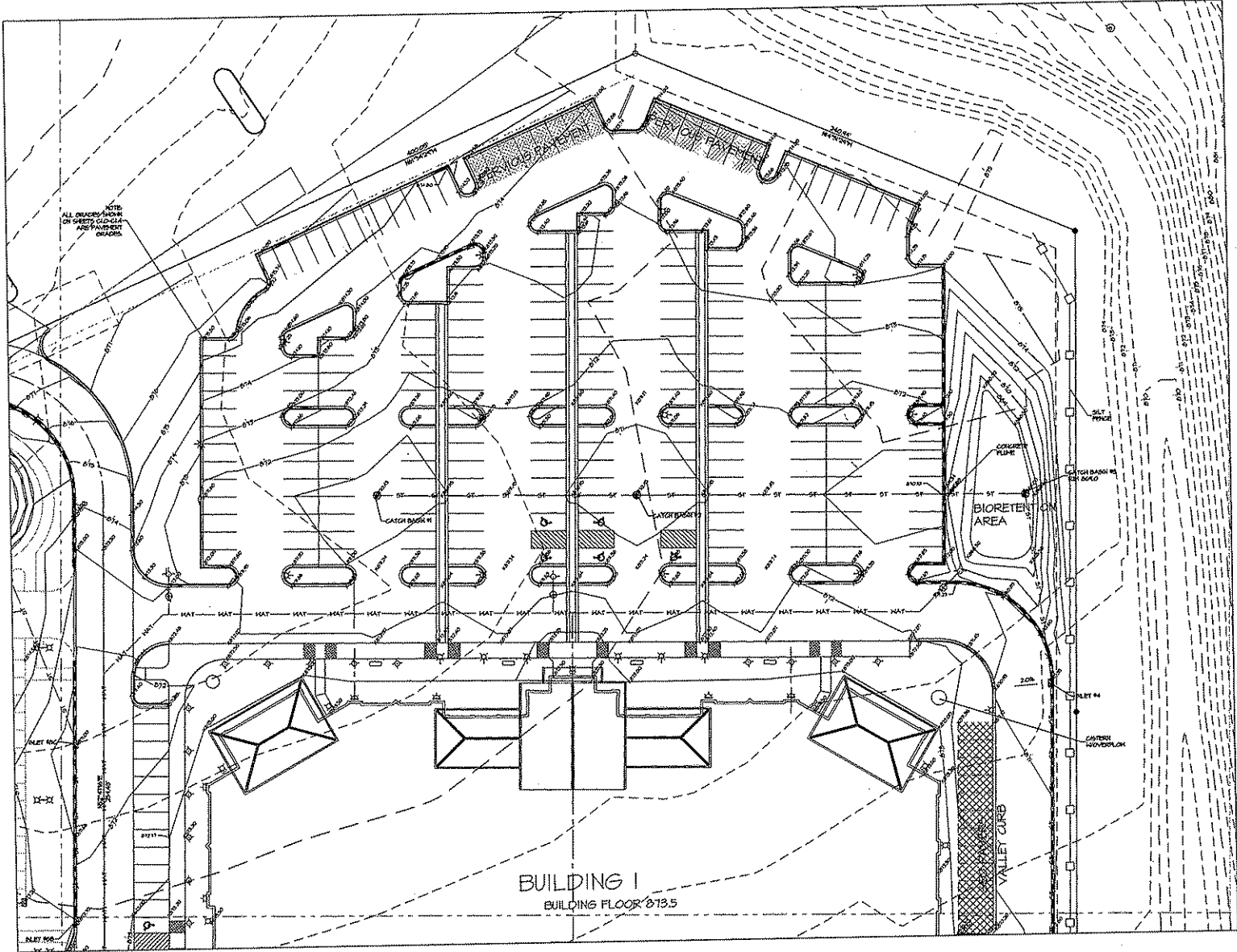
PROJECT # 0001000  
SHEET NUMBER  
**C1.1**  
1008 01/04/09

**ARNOLD AND O'SHERIDAN INC**  
REGISTERED PROFESSIONAL ENGINEERS

**PARTIAL GRADING AND EROSION CONTROL PLAN**  
SCALE: 1" = 20'-0"



PROJECT DATE: 01/16/2010



BUILDING I  
BUILDING FLOOR 013.5

**MARNOLD AND  
SHERIDAN INC.**  
ARCHITECTS

1 PARTIAL GRADING AND EROSION CONTROL PLAN  
SCALE: 1" = 20'-0"



**ICONICA**  
True Design-Build  
1000 Valley View Way, Madison, WI 53713  
(608) 261-5000 FAX: (608) 261-5010  
www.iconicabi.com

**STEINHAFELS FURNITURE STORE**  
DESIGN: MADISON, WI  
MADISON EAST STORE, LLC  
2231 HUNTER COUNTRY WAY F  
WAUWATOSH, WI 53186-1509

ISSUE DATE:

REVISED DATE:

**Schematic Design Phase!**  
This drawing indicates the  
scope and relationship of  
the project components.  
This drawing is not for  
construction.

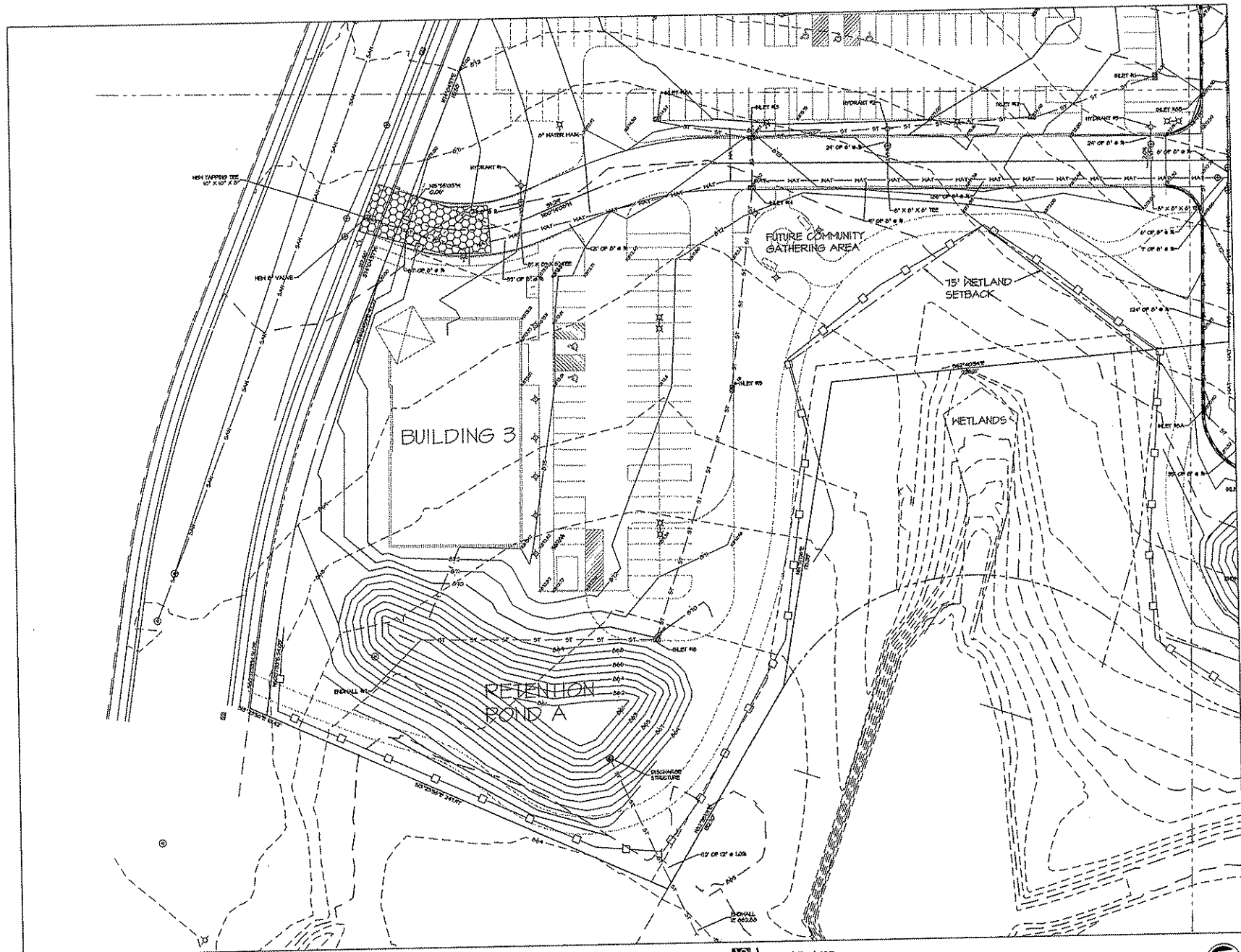
This document is not to be  
reproduced or transmitted in  
any form or by any means  
electronic, mechanical, or  
photocopying, recording, or  
by any information storage  
and retrieval system, without  
the prior written permission  
of the copyright owner.

PROJECT #: 20070560

SHEET NUMBER

**C1.2**

2008 03/14/10



**ARNOLD AND  
O'SHERIDAN INC**  
ENGINEERS

**PARTIAL GRADING AND EROSION CONTROL PLAN**  
SCALE: 1" = 20'-0"



1818 Main Street, Madison, WI 53703  
Ph: 608.336.2121 Fax: 608.336.1001  
www.iconica.com

---

**STEINHAFFELS FURNITURE STORE**  
Building located at the intersection of  
MADISON, WI

**MADISON EAST STORE, LLC**  
7747 FIRST COUNTY HWY E  
WAUWATIGA, WI 53186-1602

---

ISSUE DATE:

---

PROJECT #: 2007080  
SHEET NUMBER

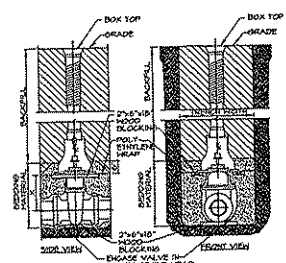
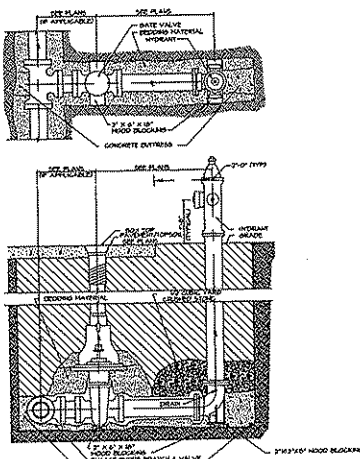
C1.3

2008 3/18/2009

Architect's Design Phase:  
This drawing indicates the  
scope and responsibility of  
the project components.  
This drawing is not for  
construction.

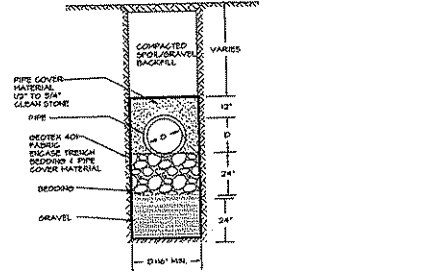
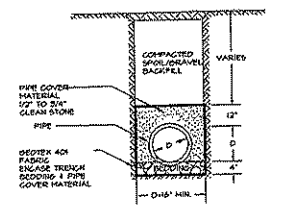
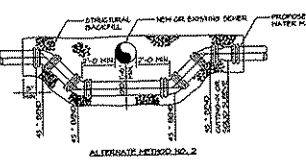
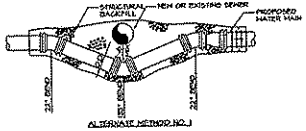
This document contains confidential  
information of Iconica Inc. and  
is to be used only for the project  
for which it was prepared. It is to  
be returned to Iconica Inc. upon  
completion of the project.



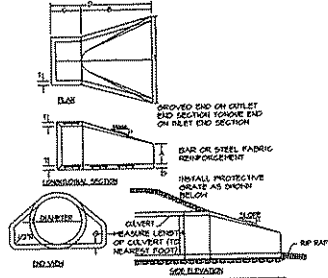


PIPE DIA. INCHES	K & B DETAIL NO.
2	4
3	5
4	6
6	7
8	8
10	9
12	10
15	11
20	12

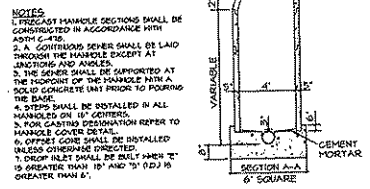
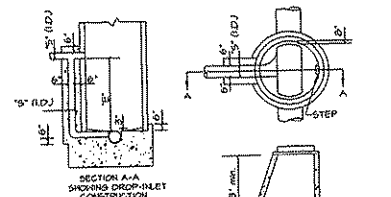
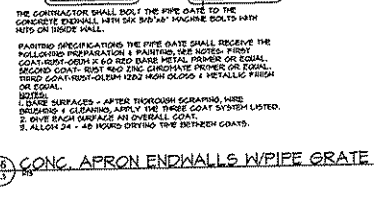
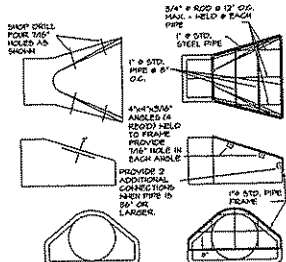
SEE PLANS FOR PIPE SIZE



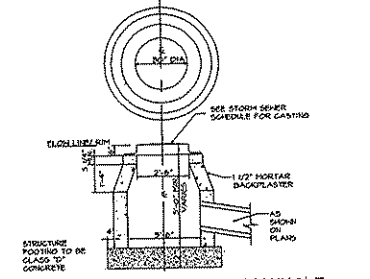
10 UTILITY TRENCH / BAD SOIL CONDITION  
C13 09



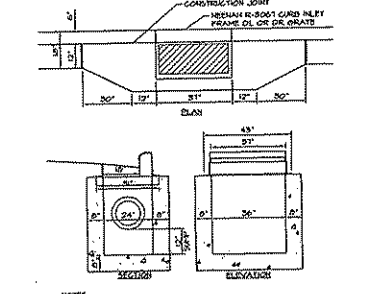
MANHOLE DIA. (INCHES)	A	B	C	D	E	F	APPROX. WEIGHT (LBS)
18"	2'00"	0"	20"	40"	18"	30"	210
24"	2'00"	0"	20"	20"	40"	30"	210
30"	2'00"	0"	20"	20"	40"	40"	210
36"	2'00"	0"	20"	20"	40"	40"	210



15 SANITARY MANHOLE  
C13 09



16 CATCH BASIN / ST. MANHOLE  
C13 09



17 CURB INLET  
C13 09

**ICONICA**  
True Design-Build

101 Long Street, Suite 101  
PO Box 100, New York, NY 10001

**STEINHAFELS FURNITURE STORE**

1234 MAIN ST.  
MASSACHUSETTS  
MASSACHUSETTS

**MAISON EAST STORE, LLC**  
1234 MAIN ST. UNIT F  
WILMINGTON, VT 05391-0001

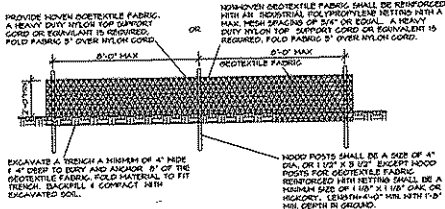
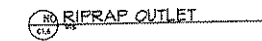
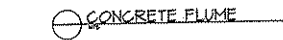
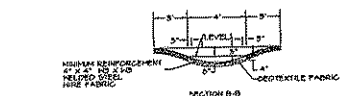
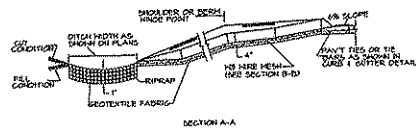
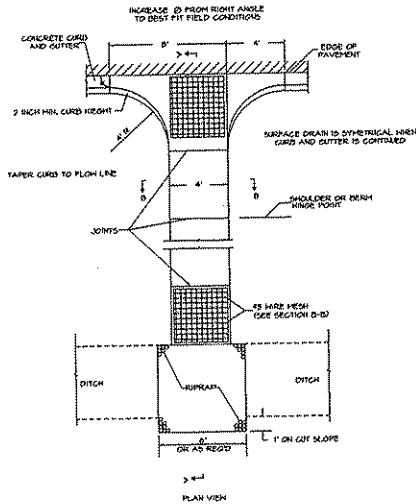
PROJECT # 2007050  
SHEET NUMBER

C1.5

1908 Rev. 01

GENERAL NOTES

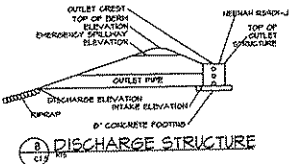
INSTALLATION OF CONSTRUCTION ENTRANCES AND DISCHARGE STRUCTURES SHALL CONFORM TO THE STANDARD SPECIFICATIONS FOR HIGHWAY CONSTRUCTION AND APPLICABLE SPECIAL PROVISIONS. UNLESS OTHERWISE SPECIFIED, ALL MATERIALS SHALL BE AS SHOWN AND APPROVED BY THE ENGINEER. ALL DIMENSIONS SHALL BE IN FEET AND INCHES UNLESS OTHERWISE SPECIFIED. ALL DIMENSIONS SHALL BE TO FACE UNLESS OTHERWISE SPECIFIED. ALL DIMENSIONS SHALL BE TO FACE UNLESS OTHERWISE SPECIFIED. ALL DIMENSIONS SHALL BE TO FACE UNLESS OTHERWISE SPECIFIED.



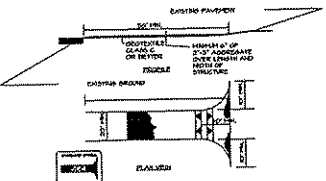
SILT FENCE

NOTE: REFER TO THE CONSTRUCTION SITE BEST MANAGEMENT PRACTICE HANDBOOK-SECTION B.7.

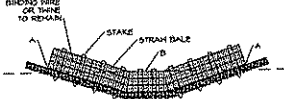
Table with 4 columns: POINT #, POINT DIA, POINT DIA, POINT DIA. It lists dimensions for various points of a discharge structure.



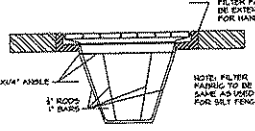
DISCHARGE STRUCTURE



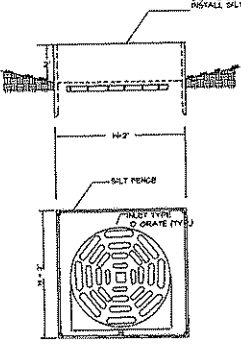
STABILIZED CONST. ENTRANCE



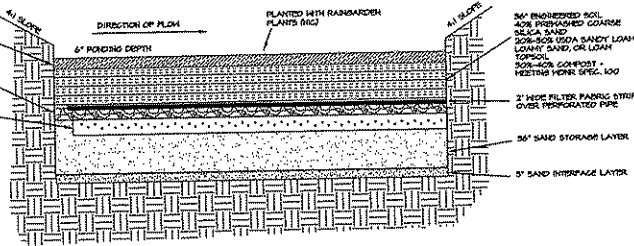
STRAW BALE CHECK



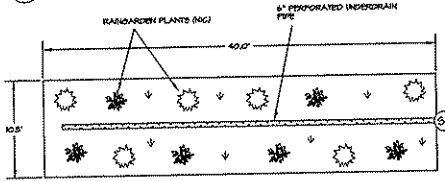
INLET INSERT BASKET



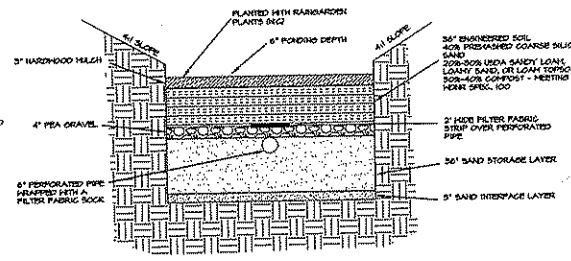
INLET PROTECTION



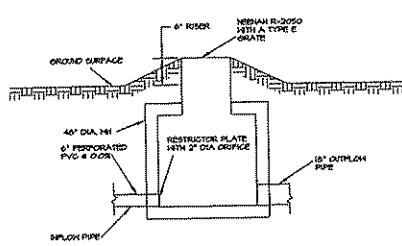
BIORETENTION PROFILE



BIORETENTION PLAN VIEW



BIORETENTION CROSS SECTION



BIORETENTION OUTLET CONNECTION

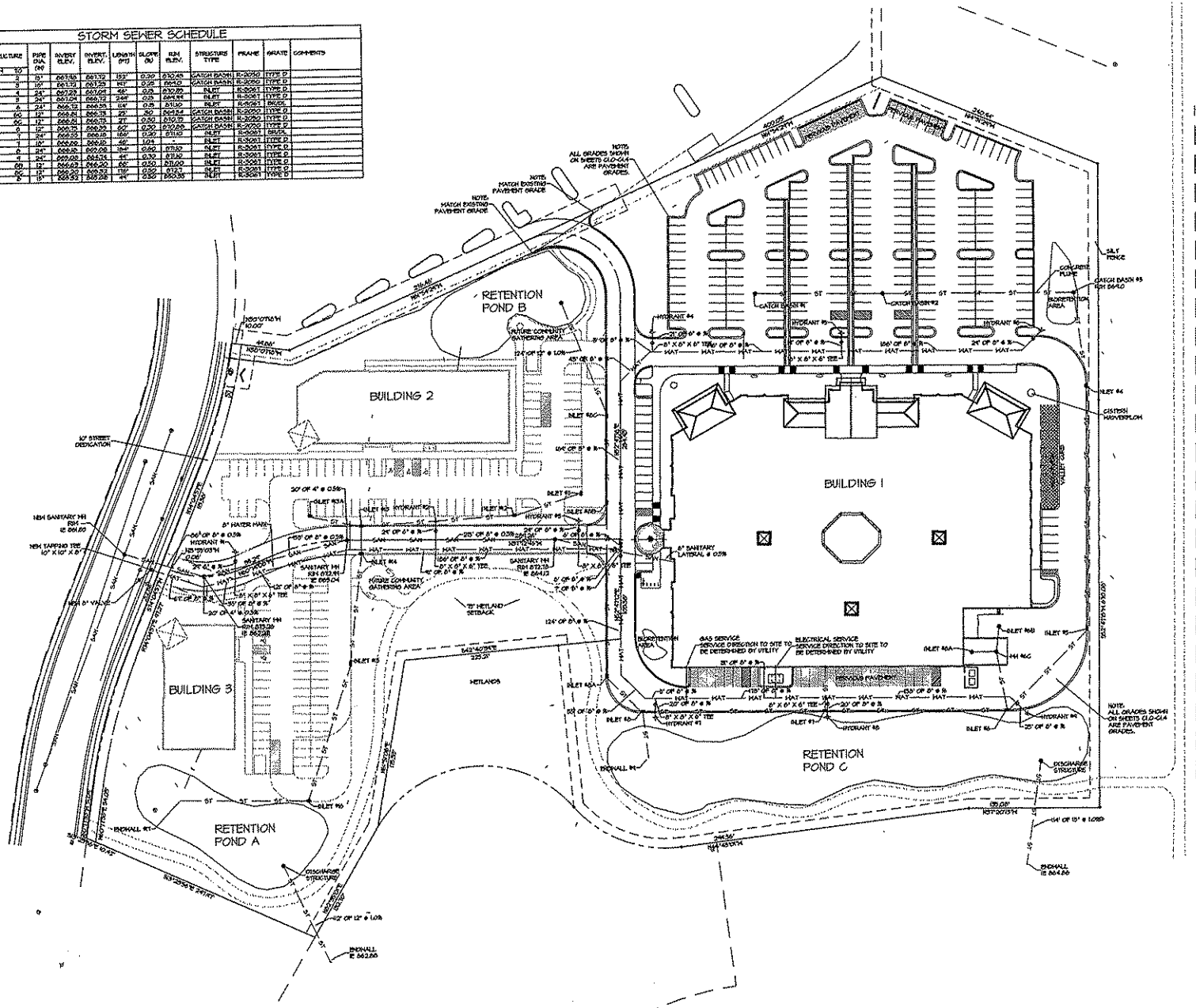
CIVIL DETAILS

ARNOLD AND O'SHERIDAN INC. CIVIL ENGINEERS

Project information block including company logo (ICONICA), project name (STEINHAFELS FURNITURE STORE), client name (MADISON EAST STORE, LLC), project location (WISCONSIN, WI), issue date, and sheet number (C1.6).

PLOT DATE: 04/20/2010

STORM SEWER SCHEDULE											
STRUCTURE	PIPE DIA. (IN)	INVERT ELEV.	OUTLET ELEV.	LENGTH (FEET)	MANHOLE NO.	MANHOLE ELEV.	STRUCTURE TYPE	FRAME	GRATE	COMMENTS	
J	36"	203.74	201.72	102'	130024	201.72	CATCH BASIN	S-2000	TYPE D		
L	36"	203.74	201.72	102'	130024	201.72	CATCH BASIN	S-2000	TYPE D		
P	36"	203.74	201.72	102'	130024	201.72	CATCH BASIN	S-2000	TYPE D		
Q	36"	203.74	201.72	102'	130024	201.72	CATCH BASIN	S-2000	TYPE D		
R	36"	203.74	201.72	102'	130024	201.72	CATCH BASIN	S-2000	TYPE D		
S	36"	203.74	201.72	102'	130024	201.72	CATCH BASIN	S-2000	TYPE D		
AA	36"	203.74	201.72	102'	130024	201.72	CATCH BASIN	S-2000	TYPE D		
BB	36"	203.74	201.72	102'	130024	201.72	CATCH BASIN	S-2000	TYPE D		
CC	36"	203.74	201.72	102'	130024	201.72	CATCH BASIN	S-2000	TYPE D		
DD	36"	203.74	201.72	102'	130024	201.72	CATCH BASIN	S-2000	TYPE D		
EE	36"	203.74	201.72	102'	130024	201.72	CATCH BASIN	S-2000	TYPE D		
FF	36"	203.74	201.72	102'	130024	201.72	CATCH BASIN	S-2000	TYPE D		
GG	36"	203.74	201.72	102'	130024	201.72	CATCH BASIN	S-2000	TYPE D		
HH	36"	203.74	201.72	102'	130024	201.72	CATCH BASIN	S-2000	TYPE D		
II	36"	203.74	201.72	102'	130024	201.72	CATCH BASIN	S-2000	TYPE D		
JJ	36"	203.74	201.72	102'	130024	201.72	CATCH BASIN	S-2000	TYPE D		
KK	36"	203.74	201.72	102'	130024	201.72	CATCH BASIN	S-2000	TYPE D		
LL	36"	203.74	201.72	102'	130024	201.72	CATCH BASIN	S-2000	TYPE D		
MM	36"	203.74	201.72	102'	130024	201.72	CATCH BASIN	S-2000	TYPE D		
NN	36"	203.74	201.72	102'	130024	201.72	CATCH BASIN	S-2000	TYPE D		
OO	36"	203.74	201.72	102'	130024	201.72	CATCH BASIN	S-2000	TYPE D		
PP	36"	203.74	201.72	102'	130024	201.72	CATCH BASIN	S-2000	TYPE D		
QQ	36"	203.74	201.72	102'	130024	201.72	CATCH BASIN	S-2000	TYPE D		
RR	36"	203.74	201.72	102'	130024	201.72	CATCH BASIN	S-2000	TYPE D		
SS	36"	203.74	201.72	102'	130024	201.72	CATCH BASIN	S-2000	TYPE D		
TT	36"	203.74	201.72	102'	130024	201.72	CATCH BASIN	S-2000	TYPE D		
UU	36"	203.74	201.72	102'	130024	201.72	CATCH BASIN	S-2000	TYPE D		
VV	36"	203.74	201.72	102'	130024	201.72	CATCH BASIN	S-2000	TYPE D		
WW	36"	203.74	201.72	102'	130024	201.72	CATCH BASIN	S-2000	TYPE D		
XX	36"	203.74	201.72	102'	130024	201.72	CATCH BASIN	S-2000	TYPE D		
YY	36"	203.74	201.72	102'	130024	201.72	CATCH BASIN	S-2000	TYPE D		
ZZ	36"	203.74	201.72	102'	130024	201.72	CATCH BASIN	S-2000	TYPE D		



**ARNOLD AND O'SHERIDAN INC.**  
 ENGINEERS ARCHITECTS INTERIORS  
 1000 UNIVERSITY AVENUE  
 MADISON, WI 53706  
 TEL: 608.261.1234 FAX: 608.261.1235

UTILITY PLAN  
 SCALE: 1" = 40'-0"

**ICONICA**  
 True Design-Build  
 910 University Avenue, Madison, WI 53706  
 Tel: 608.261.1234 Fax: 608.261.1235  
 www.iconica.com

---

**STEINHAFELS FURNITURE STORE**  
 600 S. KRESS AVE.  
 MADISON, WI

---

**MADISON EAST STORE, LLC**  
 1000 UNIVERSITY AVENUE  
 MADISON, WI 53706

---

REVISION DATE: \_\_\_\_\_

PROJECT DATE: \_\_\_\_\_

Schematic Design Phase:  
 This drawing indicates the scope and relationship of the project components. This drawing is not for construction.

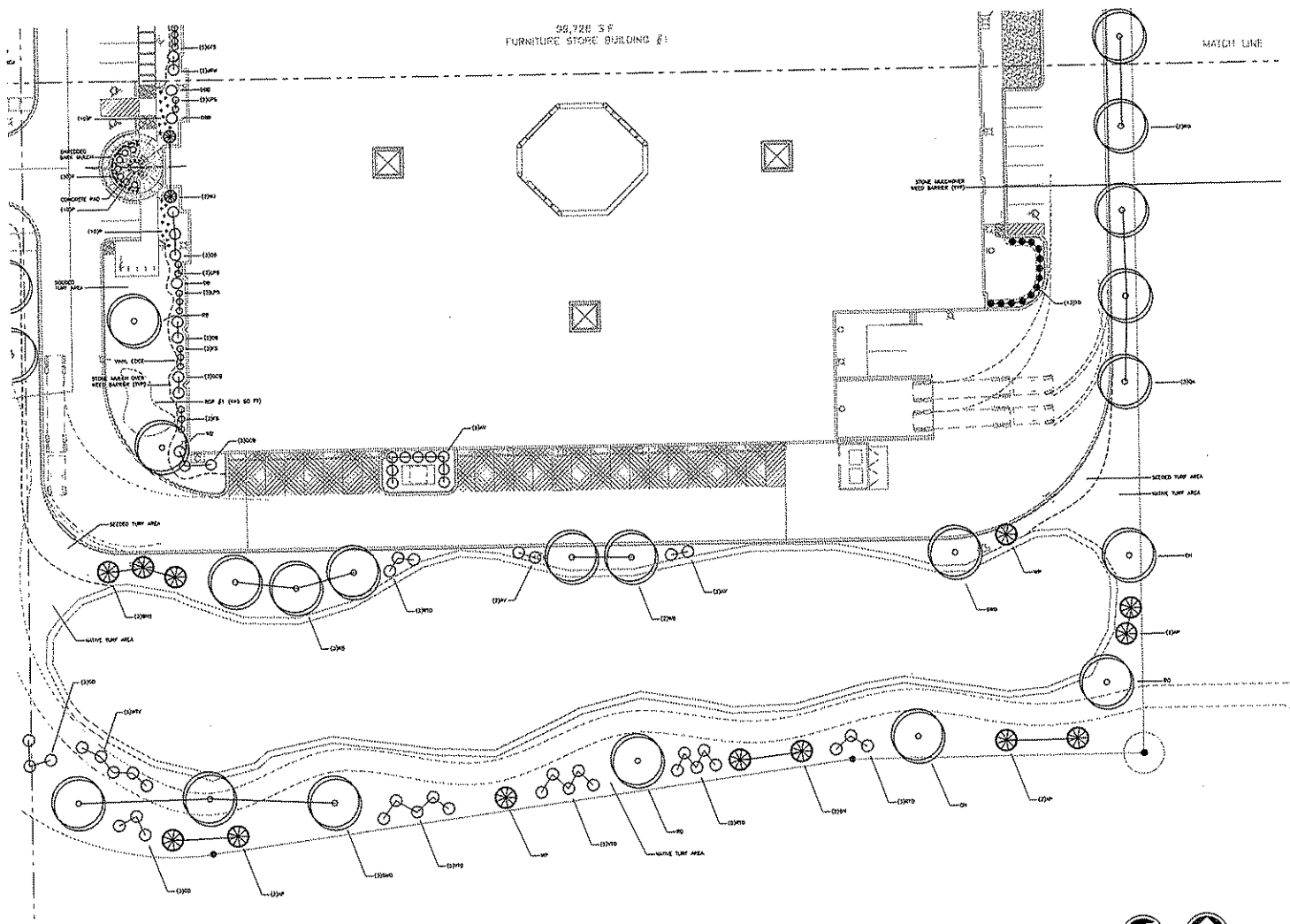
The information herein is prepared on a preliminary basis and is subject to change without notice. It is not intended to constitute a contract. The user of this information shall be responsible for its accuracy and completeness.

---

PROJECT #: 2007090  
 SHEET NUMBER  
**C2.0**  
 10/20/2009







PARTIAL LANDSCAPE PLAN  
SCALE: 1" = 40'-0"



183 Emerald Way • Madison, WI 53712  
761-546-1212 FAX: 761-546-1209  
www.iconica.com

STEINHAFELS FURNITURE STORE

MADISON EAST STORE, LLC  
WEST HENRI CITY PARK  
MADISON, WI 53702

ISSUE DATE: \_\_\_\_\_

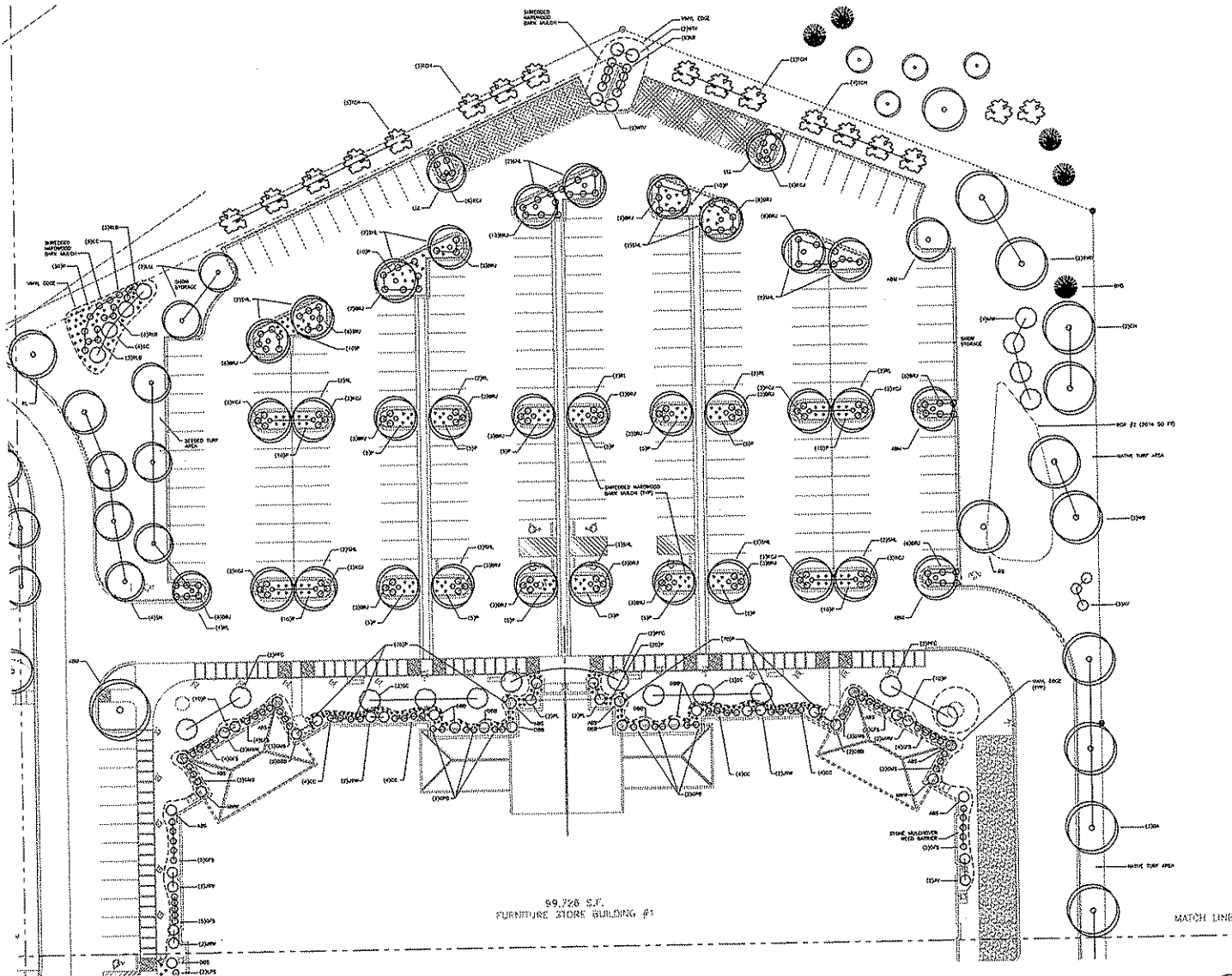
REVISION DATE: \_\_\_\_\_

The Equipment Schedule contained herein is subject to the availability of the equipment. It is the responsibility of the client to verify the availability of the equipment. The contractor is not responsible for the availability of the equipment. The contractor is not responsible for the availability of the equipment.

PROJECT #: 20190205  
SHEET NUMBER  
L100.1

1502 Lincoln St.

W/20 11/23/24



99,726 S.F.  
FURNITURE STORE BUILDING #1

1 PARTIAL LANDSCAPE PLAN  
SCALE: 1" = 40'-0"



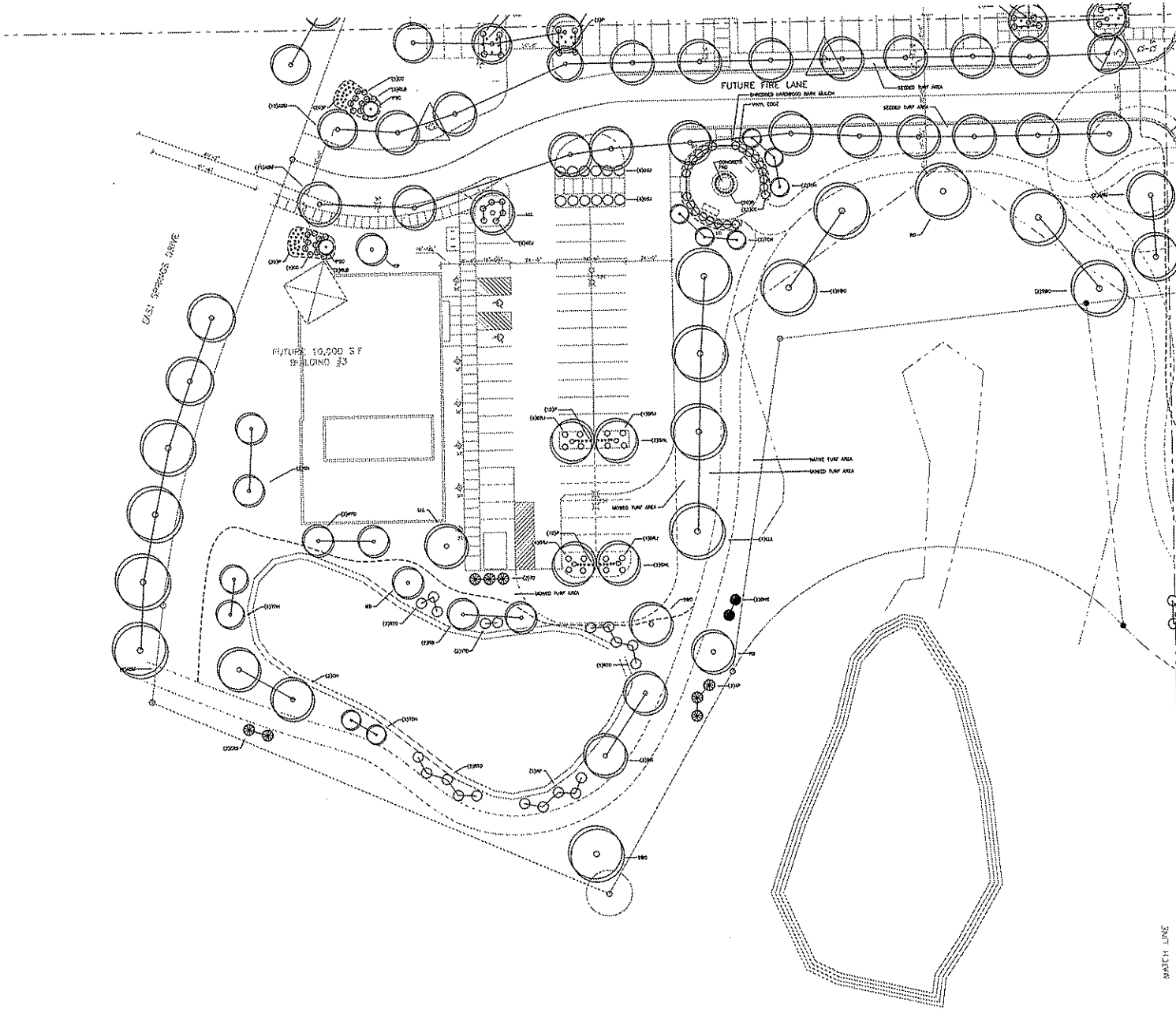
  
**ICONICA**  
 True Design-Build  
300 Orange Way • Madison, WI 53701  
 PO BOX 40070 • WISCONSIN  
 www.iconica.com

**STEINHAFEL'S FURNITURE STORE**  
500 EAST MONROE  
 MADISON, WI  
**MADISON EAST STORE, LLC**  
2033 INDIAN CITY HWY F  
 WAUWATOSA, WI 53186-2152

ISSUE DATES:
REVISION DATE:

This is a design and construction document prepared by a registered professional engineer, architect, or landscape architect, and shall be used only in accordance with the scope of the project for which it was prepared.  
 PROJECT # 2024020  
 SHEET NUMBER  
**L100.2**  
© 2024 Iconica, Inc.

1/10/2016 10:00:00 AM



PARTIAL LANDSCAPE PLAN  
SCALE: 1" = 40'-0"



**STEINHAFELS FURNITURE STORE**

631 SPRING HILL ROAD  
MADISON, WI

MADISON EAST STORE, LLC  
2823 HURON CITY ROAD  
WOODSBORO, WISCONSIN 53598

ISSUE DATE:

ISSUE DATE:

This document is the property of  
Iconica. It is to be used for the project  
described herein only. It is not to be  
reproduced or distributed in any way  
without the written permission of Iconica.

PROJECT #: 2007080  
SHEET NUMBER

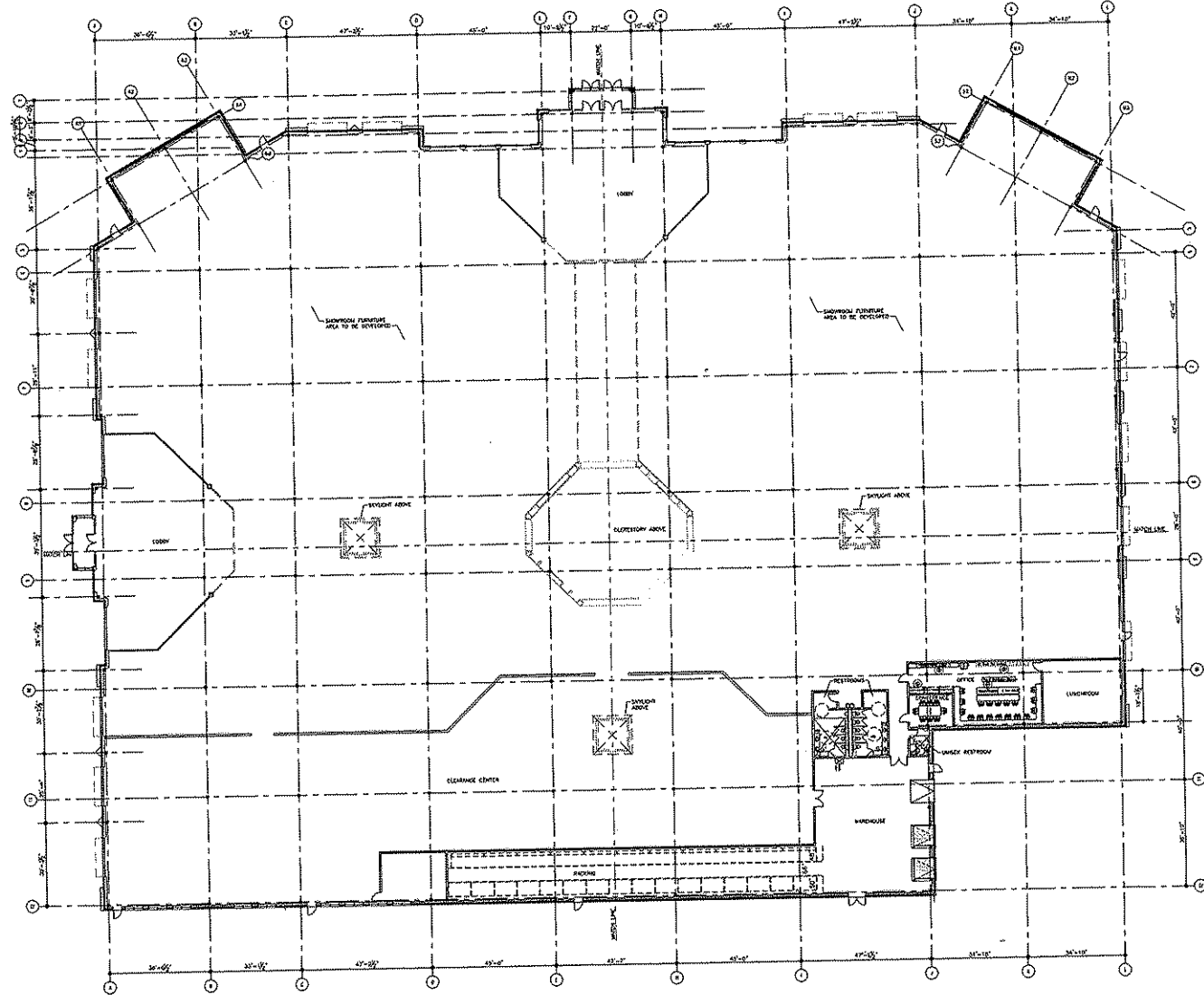
L100.3

7/26/2016



ISSUE DATE:

PROJECT NAME:



1 FIRST FLOOR PLAN 01-29-09  
 SCALE: 1/16" = 1'-0"



**STEINHAFFEL'S FURNITURE STORE**  
 MADISON, WI  
 MADISON EAST STORE, LLC  
 WEST KENNEDY DRIVE  
 MADISON, WISCONSIN

ISSUE DATE:

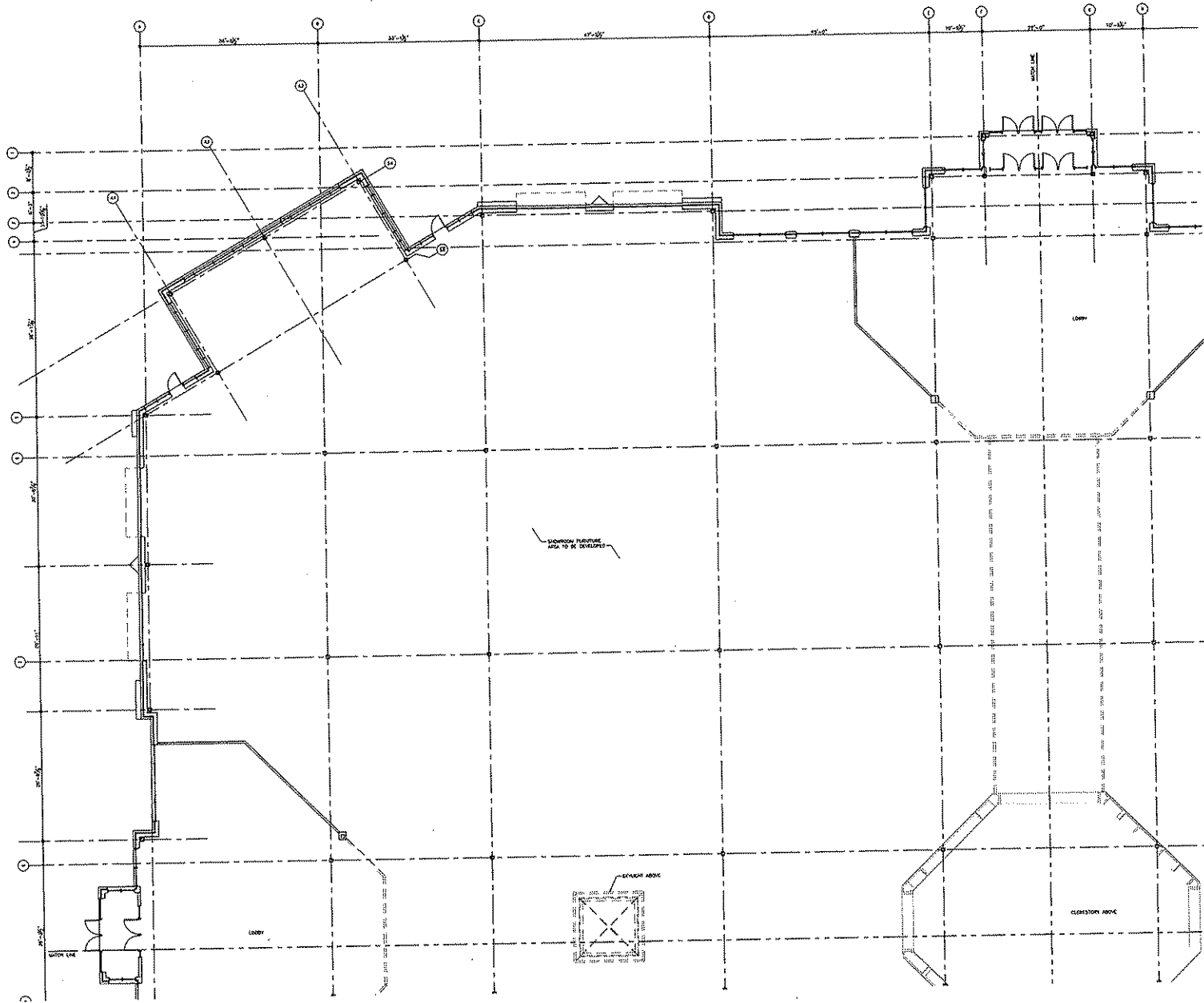

ISSUE DATE:

This document remains the property of  
 ICONICA. It is to be used only for the project  
 for which it is prepared. No other use, reproduction,  
 or distribution is permitted without the prior  
 written consent of ICONICA. All rights reserved.  
 All reproduction or distribution of this document  
 is prohibited, except as authorized by ICONICA.

PROJECT #: 003000  
 SHEET NUMBER

**A201**

356 South Ave.



**1 PARTIAL FIRST FLOOR PLAN**  
 SCALE: 1/8" = 1'-0"



**STEINHAFEL'S FURNITURE STORE**

MADISON EAST STORE, LLC  
 EAST SPRINGSBURY  
 MADISON, WI 53704

ISSUE DATES:


APPROVAL:

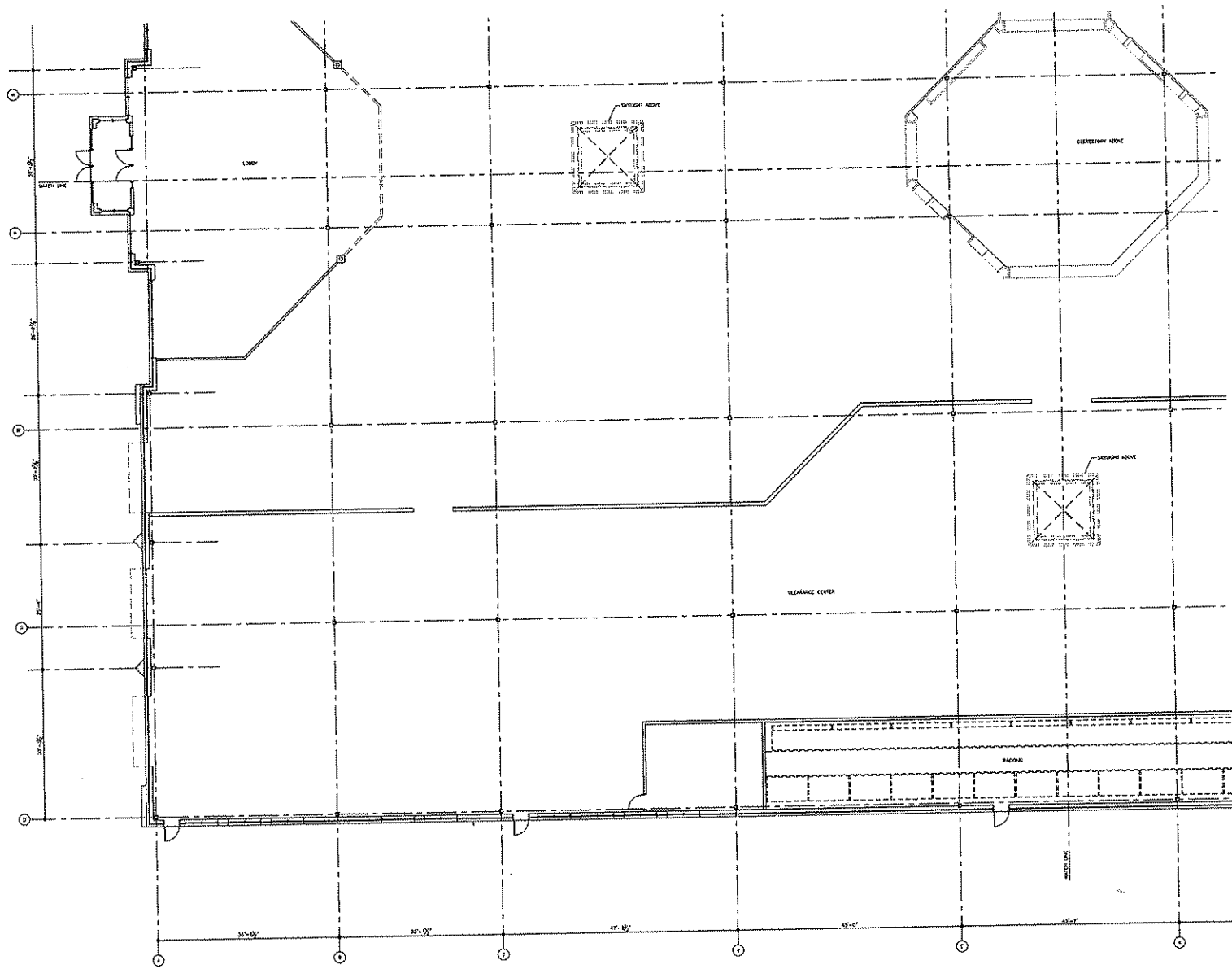
DATE:

This document is the property of Iconica, Inc. and is to be used only for the project and site for which it was prepared. It is not to be used for any other project or site without the written consent of Iconica, Inc. All rights reserved.

PROJECT #: 2011004  
 SHEET NUMBER

**A201.1**

2011 Iconica, Inc.



1 PARTIAL FIRST FLOOR PLAN  
SCALE: 1/8" = 1'-0"



**STEINHAFEL'S FURNITURE STORE**  
EAST SPRING DRIVE  
MADISON, WI

MADISON EAST STORE, LLC  
WEST HUBBARD COUNTRYWAY, E.  
MADISON, WI 53718

ISSUE DATES:

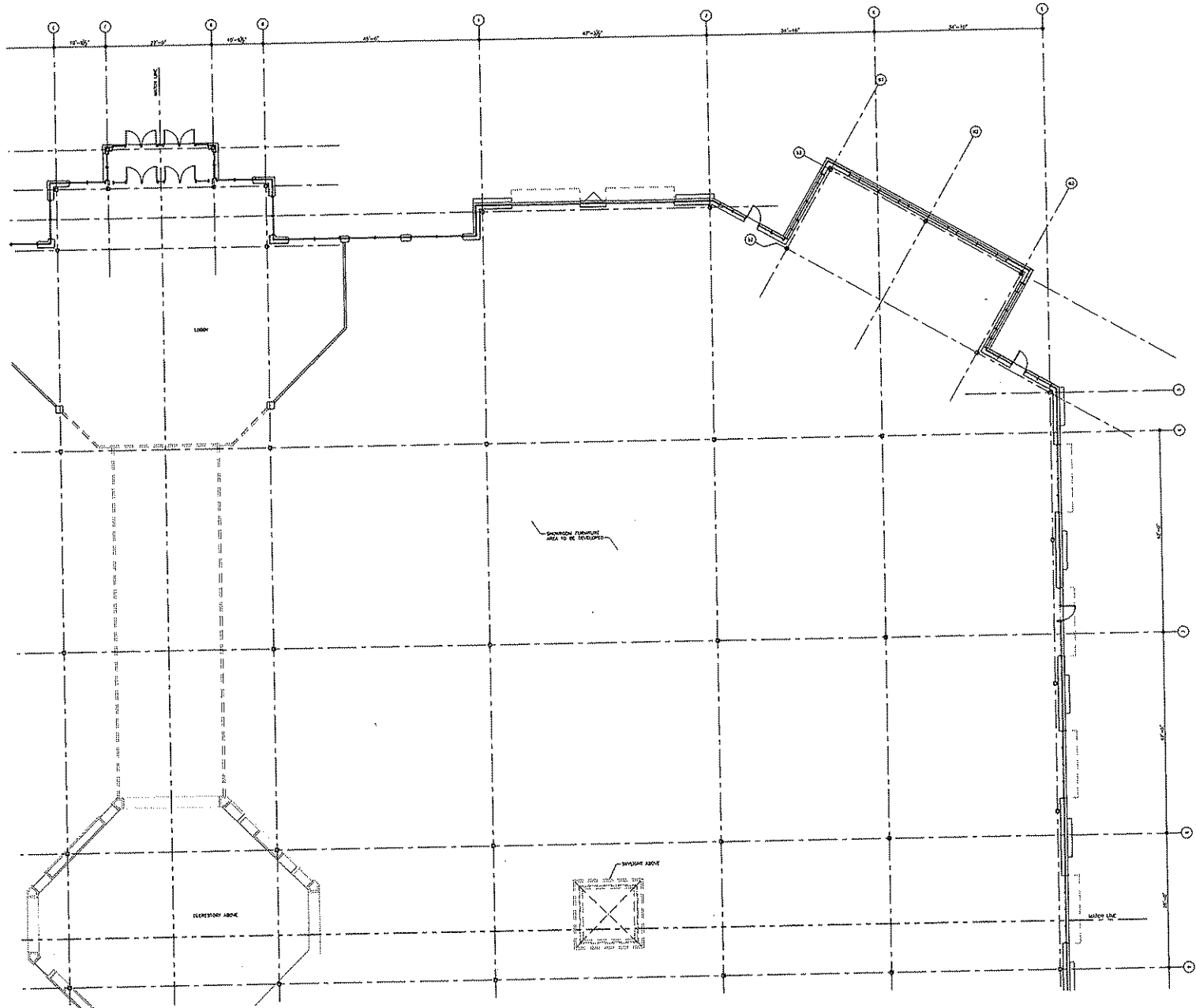

REVISE DATE:

The documents herein constitute an offer and are intended to be used only for the purpose stated. No other use, reproduction, or distribution of these documents is permitted without the express written consent of the author.

PROJECT #: 000000  
SHEET NUMBER

A201.2





**PARTIAL FIRST FLOOR PLAN**  
SCALE 1/8" = 1'-0"



# STEINHAFEL'S FURNITURE STORE

MADISON EAST STORE, LLC  
2023 HIBBS CENTER DRIVE  
MADISON, WISCONSIN  
53704

ISSUE DATES:

NO.	DATE	DESCRIPTION

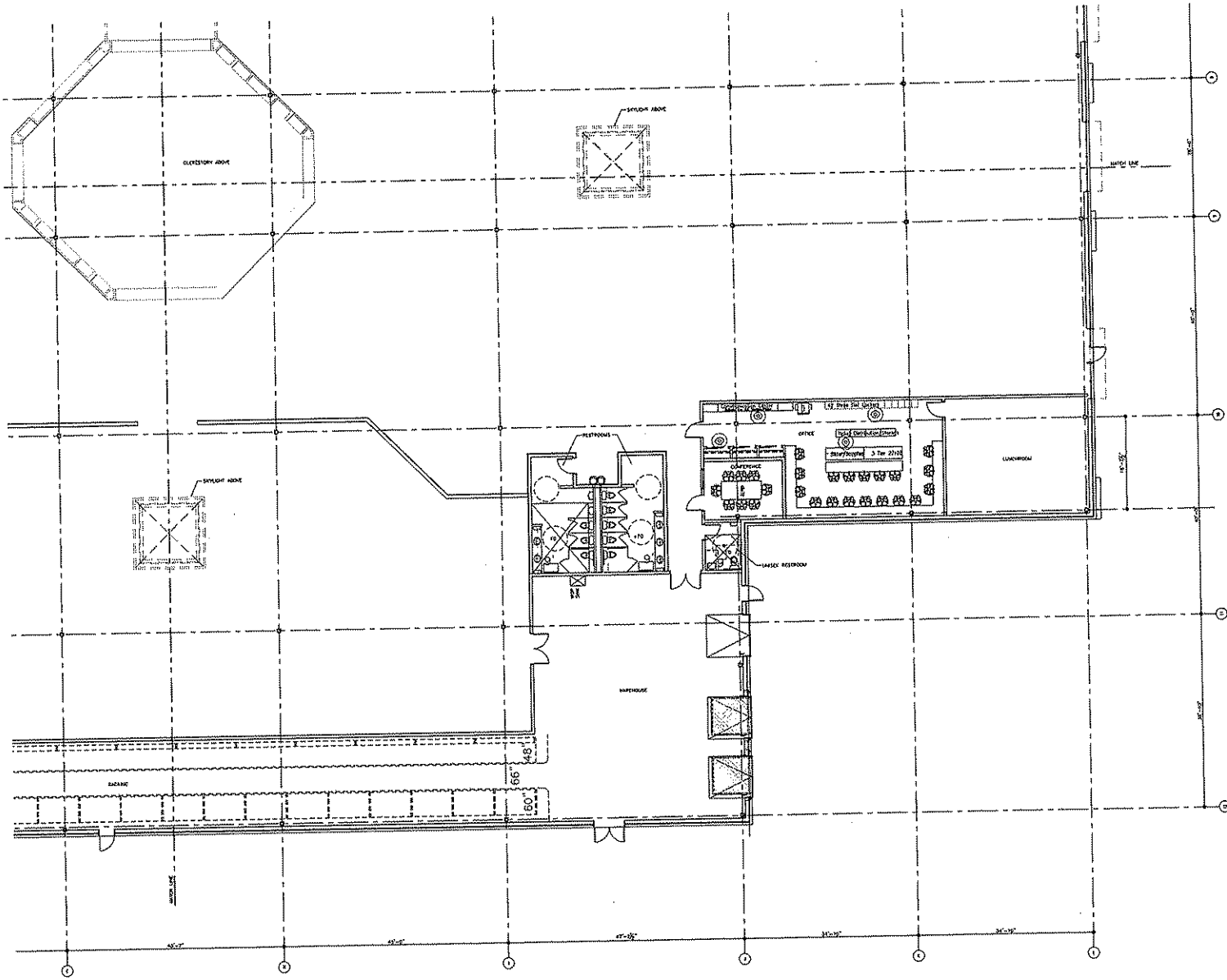
REVISIONS DATE:

This document contains confidential and proprietary information of Iconica. It is intended for the exclusive use of the recipient. If you are not the intended recipient, please do not disseminate, distribute, or use this information, and if you have received this document in error, please notify us immediately by email.

PROJECT # 2022000  
SHEET NUMBER

**A201.3**

728 NORTH ST.



1 PARTIAL FIRST FLOOR PLAN  
 SCALE: 1/8" = 1'-0"



1815 Banning Way # 200 Madison, WI 53717  
 Tel: 608.261.4100 Fax: 608.261.4108  
 www.iconica.com

STEINHAFEL'S FURNITURE STORE

MADISON EAST STORE, LLC  
 1033 HIGGS COUNTRY DRIVE  
 MADISON, WI 53717

ISSUE DATE:

REVISION DATE:

This document contains confidential or proprietary information of Iconica. It is intended for the use of the client and is not to be distributed, copied, or used in any way without the prior written consent of Iconica. If you are not the intended recipient, please notify the sender immediately.

PROJECT #: 2011000  
 SHEET NUMBER

A201.4

© 2011 Iconica, Inc.

**STEINHAFELS FURNITURE STORE**  
1301 S. KENNEDY BLVD.  
 MADISON, WI 53704

**MADISON EAST STORE, LLC**  
15251 HINNA COUNTRYWAY  
 WATKINSVILLE, WI 53190

ISSUE DATES:

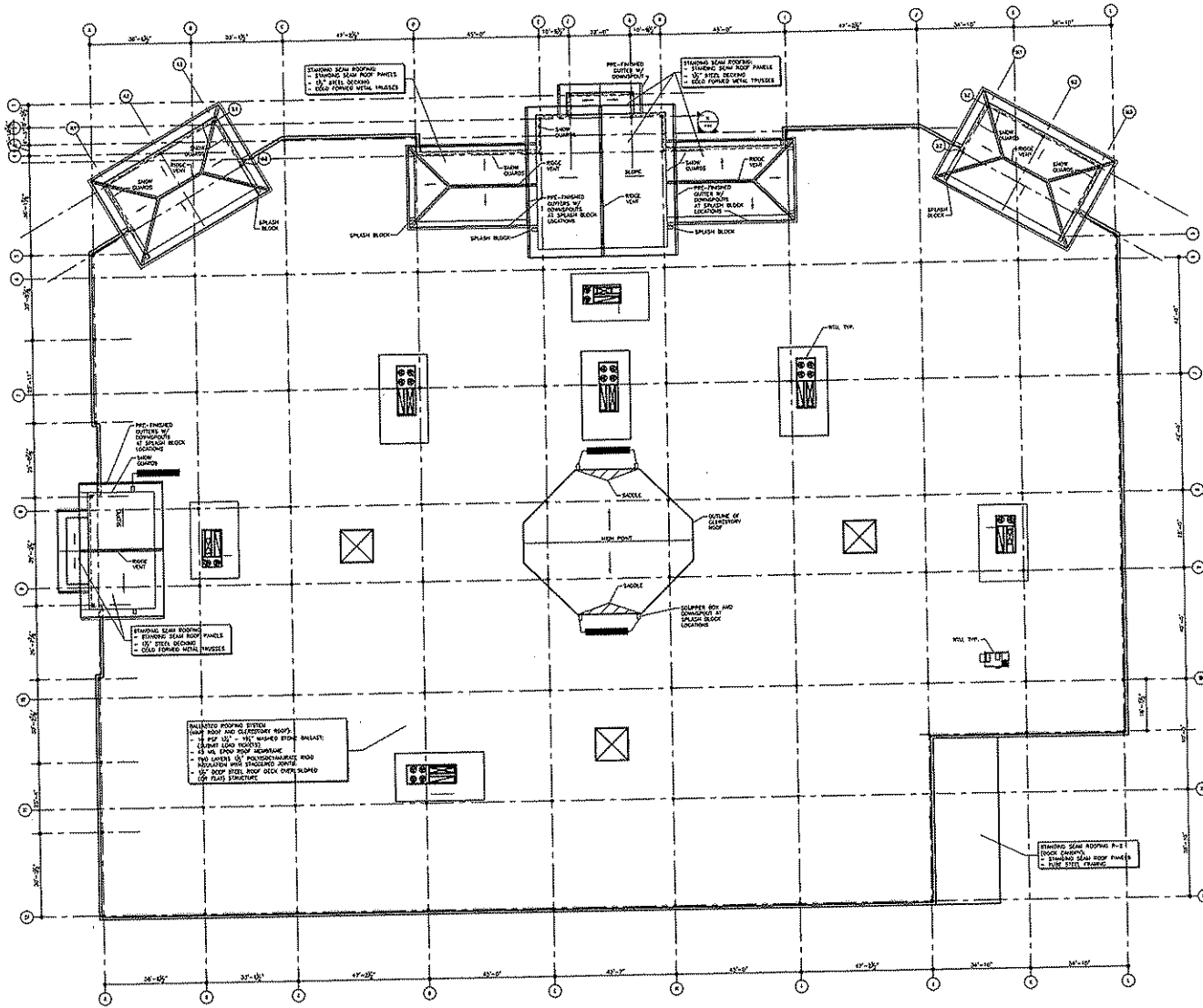

REVISED DATE:


THIS DOCUMENT CONTAINS CONFIDENTIAL AND PROPRIETARY INFORMATION OF ICONICA. IT IS TO BE USED ONLY FOR THE PROJECT AND LOCATION SPECIFICALLY IDENTIFIED HEREIN. IT IS NOT TO BE REPRODUCED, COPIED, DISTRIBUTED, OR TRANSMITTED IN ANY FORM OR BY ANY MEANS WITHOUT THE WRITTEN PERMISSION OF ICONICA.

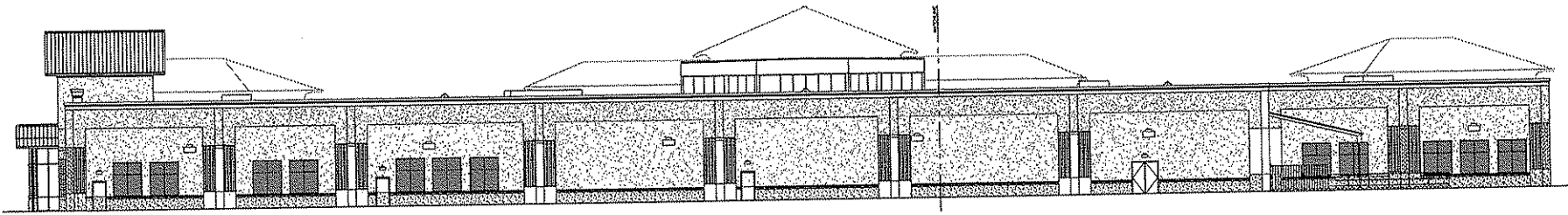
PROJECT # 2007000  
 SHEET NUMBER

**A202**

2008 Iconica, Inc.

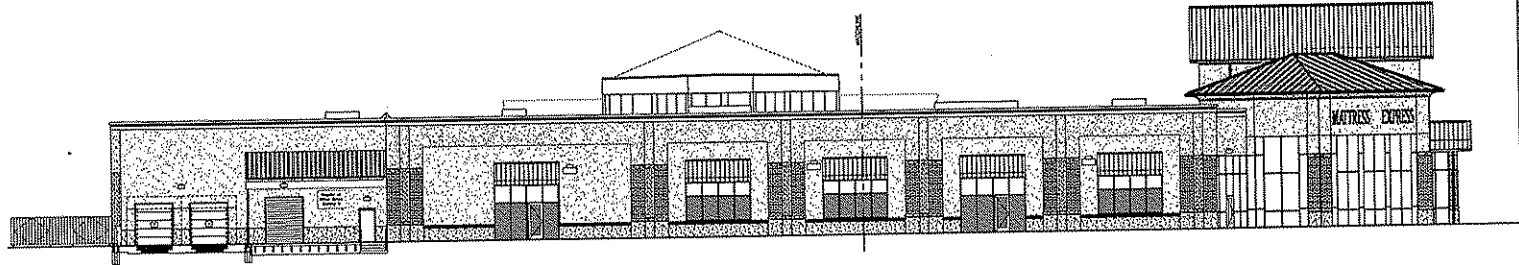



  
**1 ROOF PLAN** 01-23-09  
SCALE: 1/8" = 1'-0"



4 SOUTH ELEVATION  
SCALE: 3/32" = 1'-0"

EXTERIOR MATERIAL KEY	
MARK	DESCRIPTION
SP-1	COLOR: SMOKE GREY TEXTURE: FINE SAND FINISH
SP-2	COLOR: SMOKE GREY TEXTURE: FINE SAND FINISH
SP-3	COLOR: TO MATCH COLOR OF CHAT STONE BAGS TEXTURE: FINE SAND FINISH
SP-4	COLOR: TO MATCH COLOR RANGE OF BRICK VENEER TEXTURE: FINE SAND FINISH
CHAT STONE SIDE & COP	MATERIAL: EDWARDS OVERCAST CONCRETE (DRYCAST) COLOR: SEE SP-3
BRICK VENEER	MATERIAL: BRICK COLOR: BROWN BRICK COMPANY SIZES: 8 1/2" X 2 1/4" (SEE DRAWING) & 8" X 2" (SEE DRAWING) PATTERN: TYPE 2, WESTERN LAKE W-10 "TERRAZZO CRT"
WINDOW FRAME	MATERIAL: ALUMINUM COLOR: POLYMER FINISH TYPE: ANODIZED ALUMINUM



3 EAST ELEVATION  
SCALE: 3/32" = 1'-0"



2 WEST ELEVATION  
SCALE: 3/32" = 1'-0"



1 NORTH ELEVATION  
SCALE: 3/32" = 1'-0"

BUILDING ELEVATIONS 01-29-09  
SCALE: 3/32" = 1'-0"

REVISION DATE:

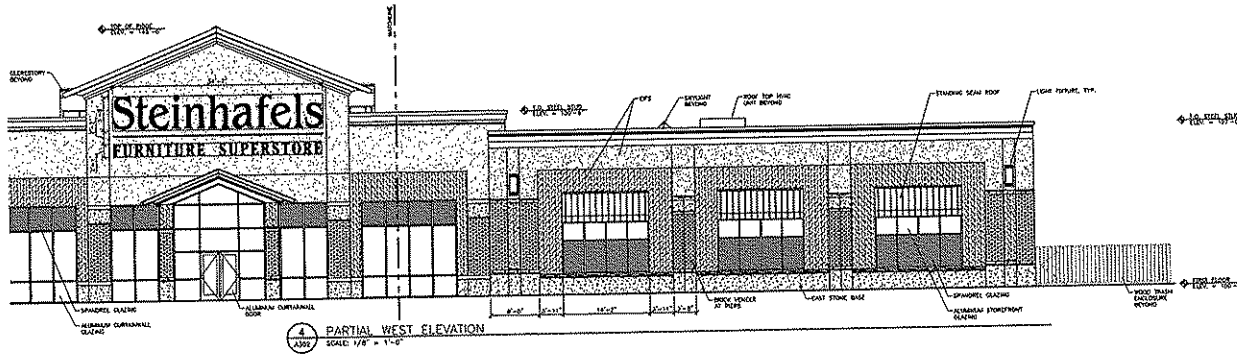
REVISION DATE:

This document contains confidential information and is intended for the exclusive use of the client. It is not to be distributed, copied, or otherwise used without the express written consent of the architect. If you are not the intended recipient, please notify the architect immediately.

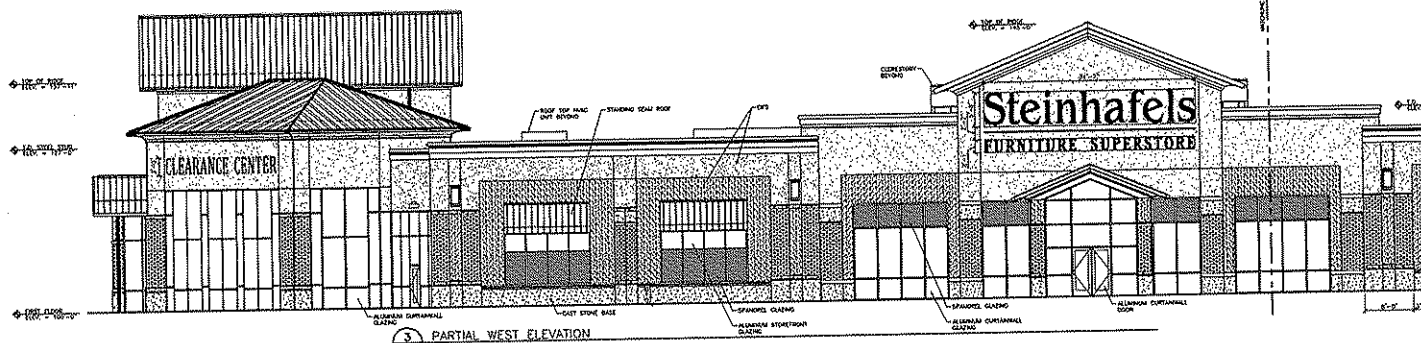
PROJECT #: 2007680

SHEET NUMBER

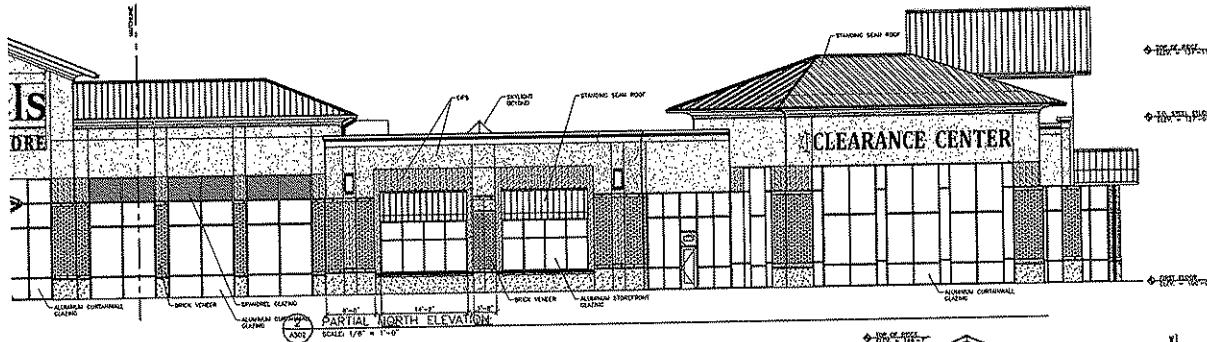
A301



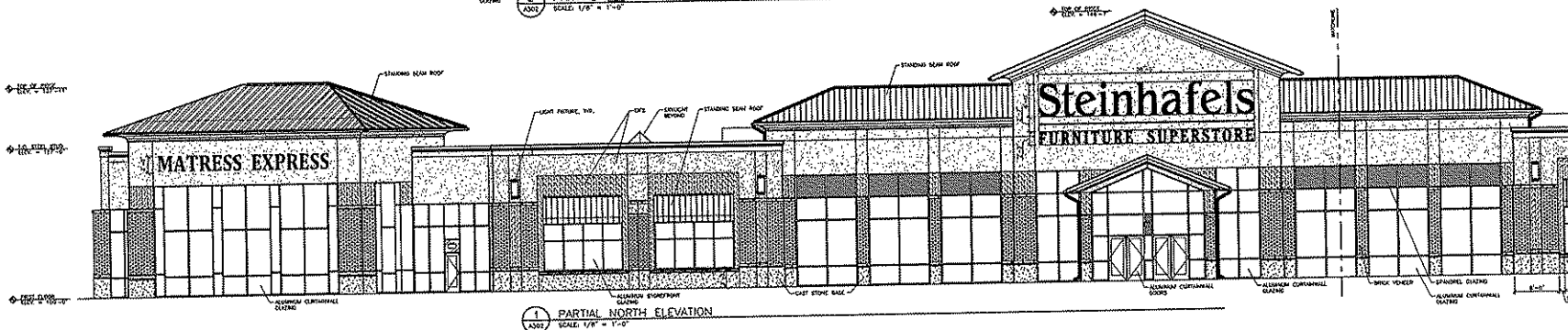
2 PARTIAL WEST ELEVATION  
SCALE: 1/8" = 1'-0"



3 PARTIAL WEST ELEVATION  
SCALE: 1/8" = 1'-0"



4 PARTIAL NORTH ELEVATION  
SCALE: 1/8" = 1'-0"



1 PARTIAL NORTH ELEVATION  
SCALE: 1/8" = 1'-0"

**ICONICA**  
TECH DESIGN/BUILD

1575 Oakridge Way Madison, WI 53717  
PO BOX 26344 # 4 FL MADISON, WI 53702  
WWW.ICONICA.COM  
TEL: 608.783.4200

**STEINHAFELS FURNITURE STORE**  
581 MONROE BLVD  
MADISON, WI

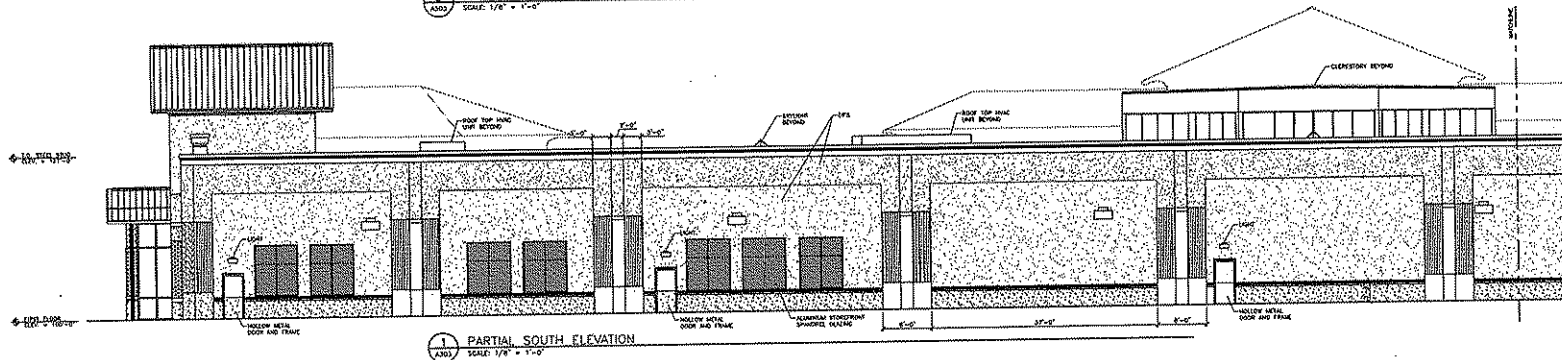
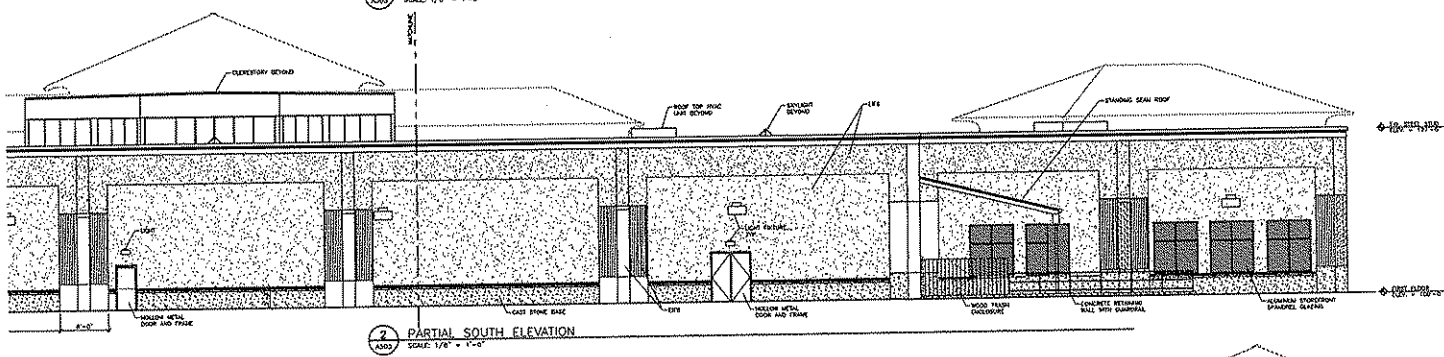
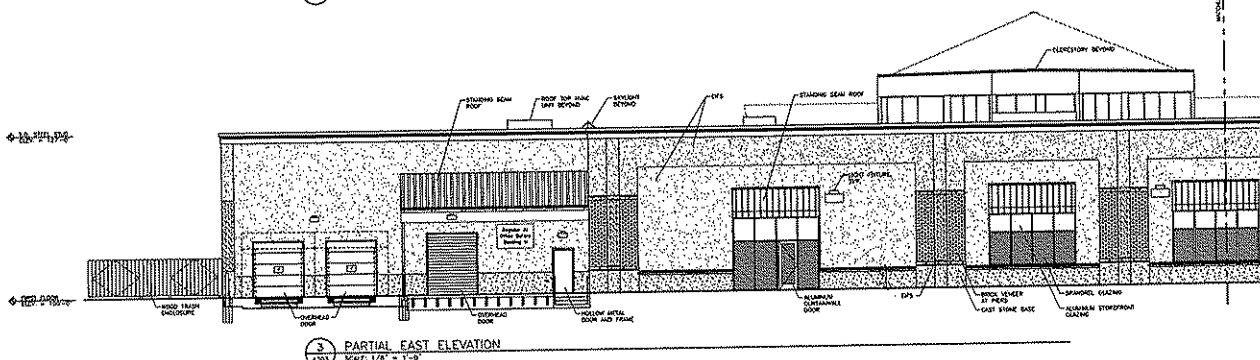
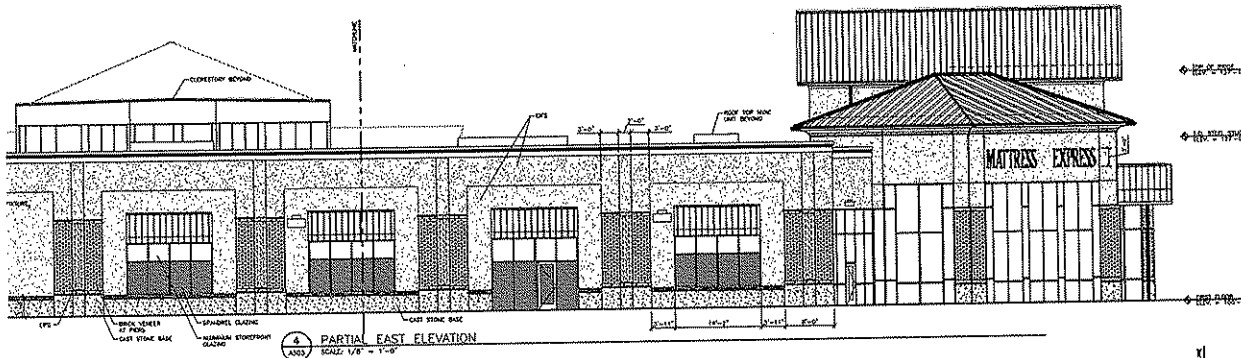
MADISON EAST STORE, LLC  
1000 WEST CENTER WAY # 2  
WALDEN, WI 53186-1622

ISSUE DATE:

REVISED DATE:

PROJECT #: 2007090  
SHEET NUMBER  
**A302**  
1/20/09 11:30 AM

The documents are prepared for the specific project and site conditions shown hereon. The contractor shall be responsible for verifying the accuracy of the information shown hereon and for any changes or modifications required for construction.



**ICONICA**  
Tree Design

301 Spring Way, Madison, WI 53711  
 PO BOX 55682 F Madison, WI 53756  
 608.261.1234

**STEINHAFELS FURNITURE STORE**

MADISON, WI

MADISON EAST STORE, LLC  
 1621 HERShey COURT HWY F  
 MADISON, WI 53718-0042

ISSUE DATE:

PROJECT # 20070082
SHEET NUMBER
<b>A303</b>
TDS GROUP, INC.

This document is the property of the Architect and is to be used only for the project and site indicated. It is not to be distributed, copied, or otherwise used in any way without the written permission of the Architect.

MATCH LINE

MATCH LINE

CHSE SERVICES CRUISE

FUTURE  
10,000 S.F.  
BUILDING

FUTURE 16,500 S.F.  
BUILDING #2

59,728 S.F.  
FURNITURE STORE BUILDING #1

MATCH LINE

MATCH LINE

MATCH LINE

1 ELECTRICAL SITE PLAN  
SCALE 1" = 40'-0"



**ICONICA**  
True Design. Bold  
101 Farmingdale Highway, Suite 200  
Great Neck, NY 11042  
781-261-1600  
www.iconica.com

STEINHAFEL'S FURNITURE STORE

501 WEST HURON STREET  
MADISON, WI 53703

MADISON EAST STORE, LLC  
WEST HURON CENTERWAY F  
MADISON, WI 53703

ISSUE DATES:

NO.	DATE	DESCRIPTION

REVISIONS:

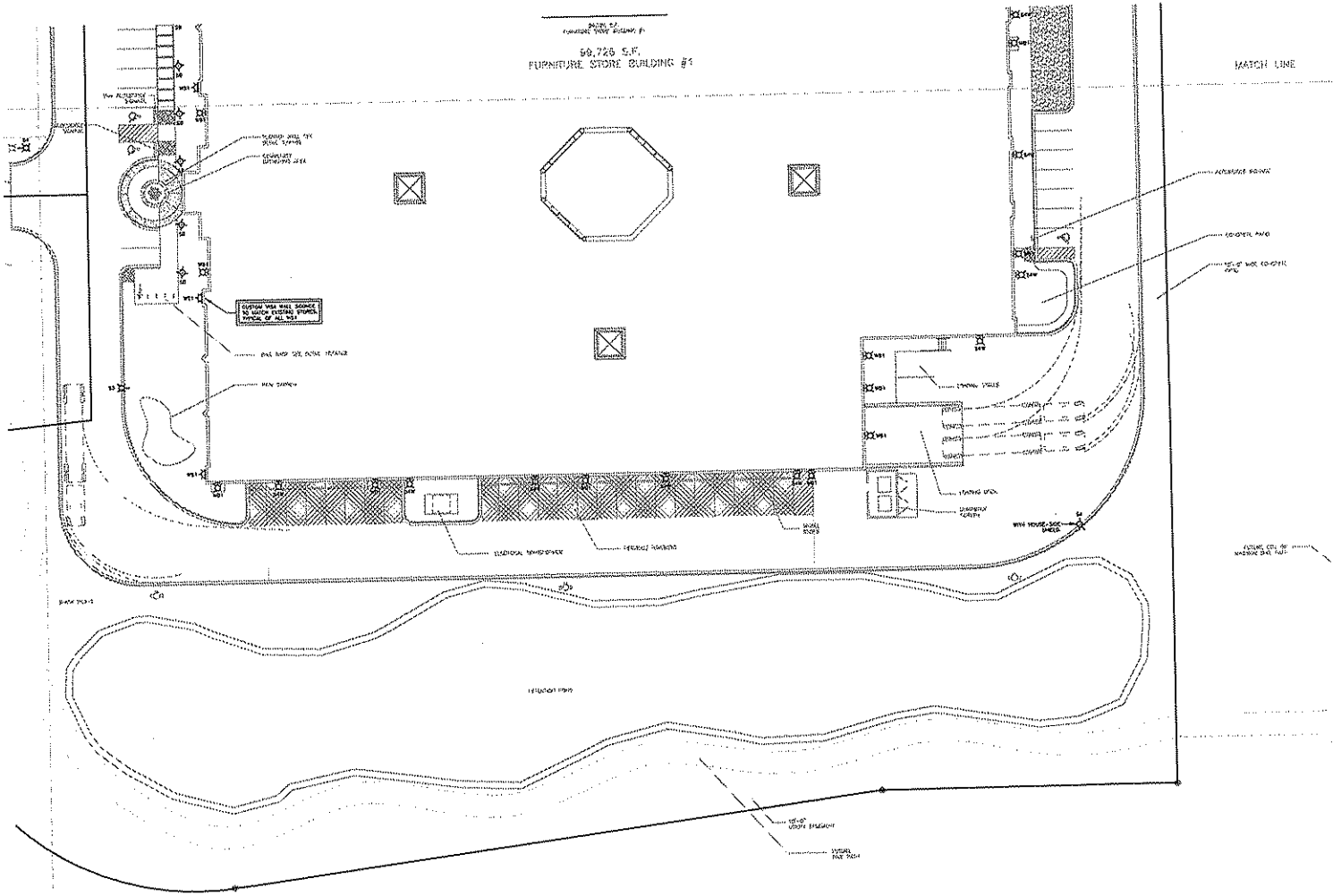
This document remains the property of the  
design professional and shall not be  
reproduced, stored, or transmitted in any  
form or by any means, electronic, mechanical,  
photocopying, recording, or by any information  
storage and retrieval system, without the  
express written permission of the design professional.  
Date: 08/20/14

PROJECT #: 30010000  
SHEET NUMBER

E100

7/26/2014

NOTES SHEET NUMBER:



PAGE 01  
 FURNITURE STORE BUILDING #1  
 98,725 S.F.  
 FURNITURE STORE BUILDING #1

MATCH LINE

LINE

1 PARTIAL ELECTRICAL SITE PLAN  
 SCALE: 1/4" = 1'-0"



141 Green Way, Madison, WI 53717  
 PH: 608-279-1725  
 WWW.ICONICA.COM

STEINHAFFELS FURNITURE STORE

MADISON EAST STORE, LLC  
 WEST HILLS COMPANY  
 MADISON, WISCONSIN

TRUE DATE:


REVISE DATE:

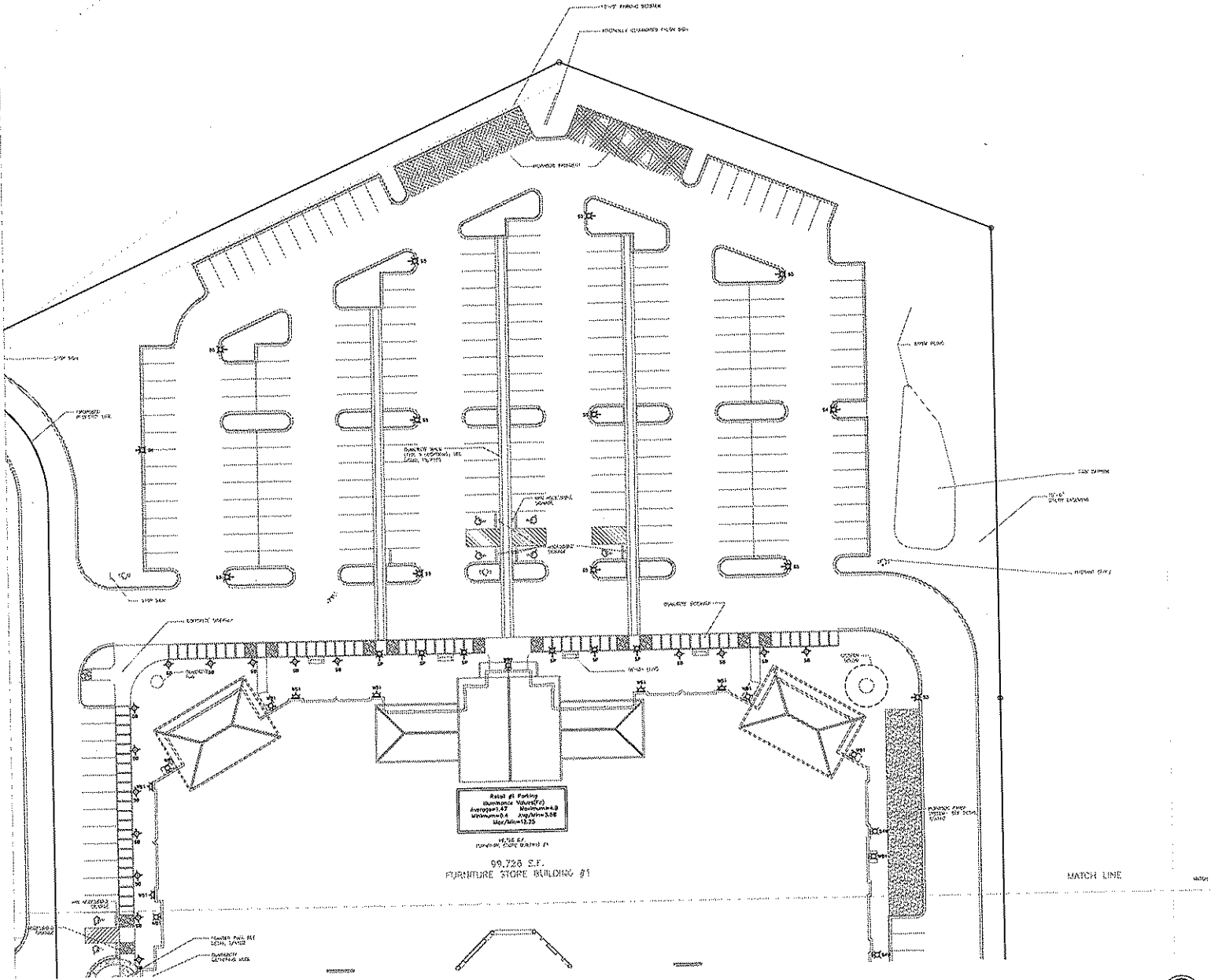
This plan and drawings constitute a contract between the client and the designer. The client shall be responsible for obtaining all necessary permits and approvals. The designer shall be responsible for the design and construction of the electrical system. The designer shall not be responsible for the safety or performance of the electrical system after the date of completion of the design.

PROJECT # 2020200  
 SHEET NUMBER

**E100.1**

7000 S. Lincoln St.





**Lot #1 Parking**  
 400,000 S.F. (Net)  
 2,700 Spaces  
 10' x 20' Stalls  
 10' x 30' Stalls

**Lot #1**  
 69,728 S.F.  
 FURNITURE STORE BUILDING #1

**1 PARTIAL ELECTRICAL SITE PLAN**  
 SCALE: 1/8" = 1'-0"



**STEINHAFFEL'S FURNITURE STORE**

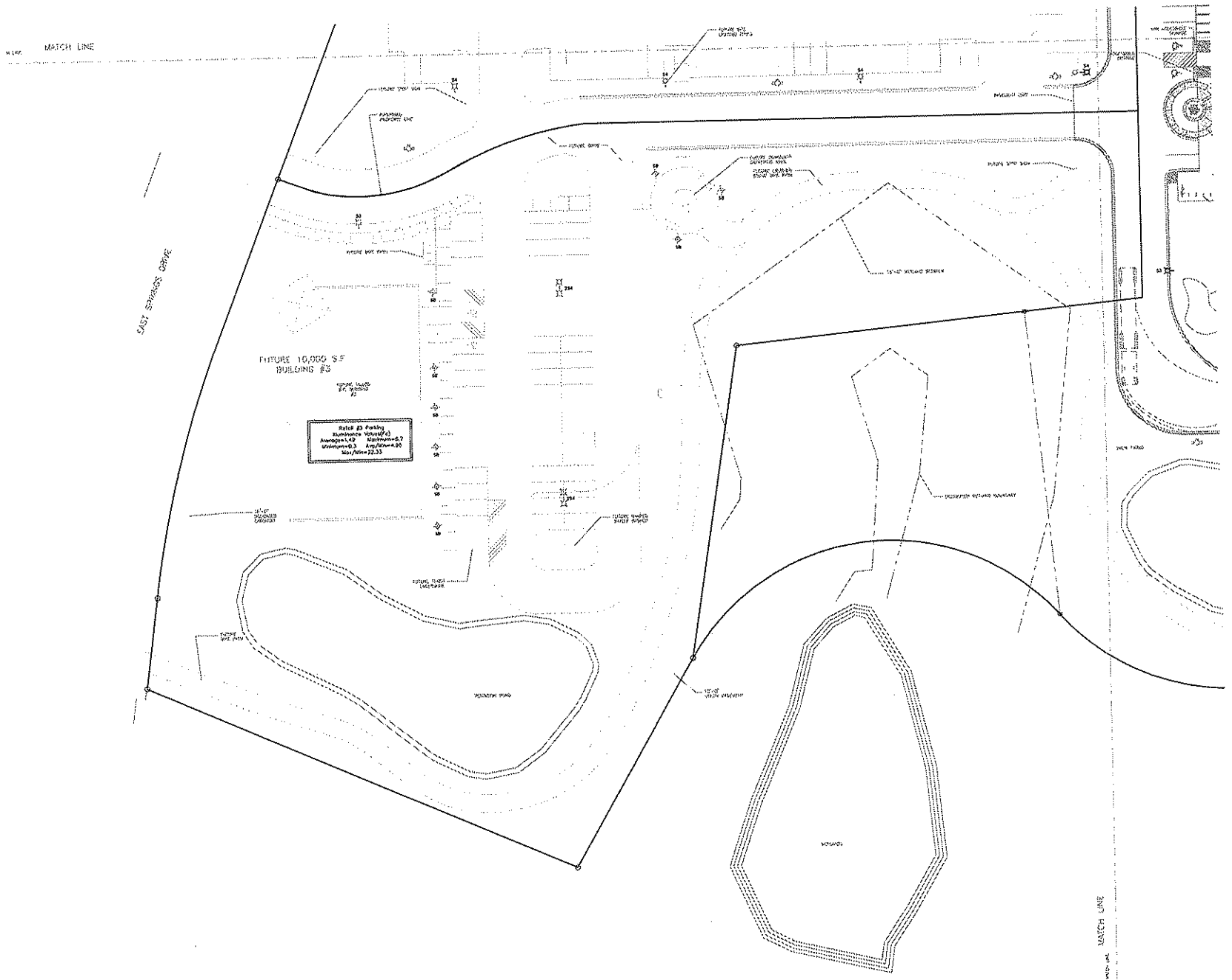
MADISON EAST STORE, LLC  
 WEST OF I-75 @ SR 518  
 MADISON, VA 22116

ISSUE DATE:

This document is the property of  
 the project and shall not be  
 reproduced, modified, or  
 distributed without the written  
 consent of the project manager.

PROJECT #: 2011050  
 SHEET NUMBER  
**E100.2**

10/25/2017 10:50:00 AM



Retail #3 Parking  
 Maximum Capacity  
 Average 1.4 Maximum 2.7  
 Minimum 0.3 Average 0.9  
 Max Area 21.3

1 PARTIAL ELECTRICAL SITE PLAN  
 SCALE 1/8" = 1'-0"



**ICONICA**  
True Design-Build

101 Century Way, Madison, WI 53718  
 PHONE: 608.277.1234 FAX: 608.277.1235  
 WWW.ICONICA.COM

---

**STEINHAFEL'S FURNITURE STORE**  
 MADISON, WI

**MADISON EAST STORE, LLC**  
 WEST HERRING CIRCLE  
 MADISON, WISCONSIN 53718

---

DATE: \_\_\_\_\_

BY: \_\_\_\_\_

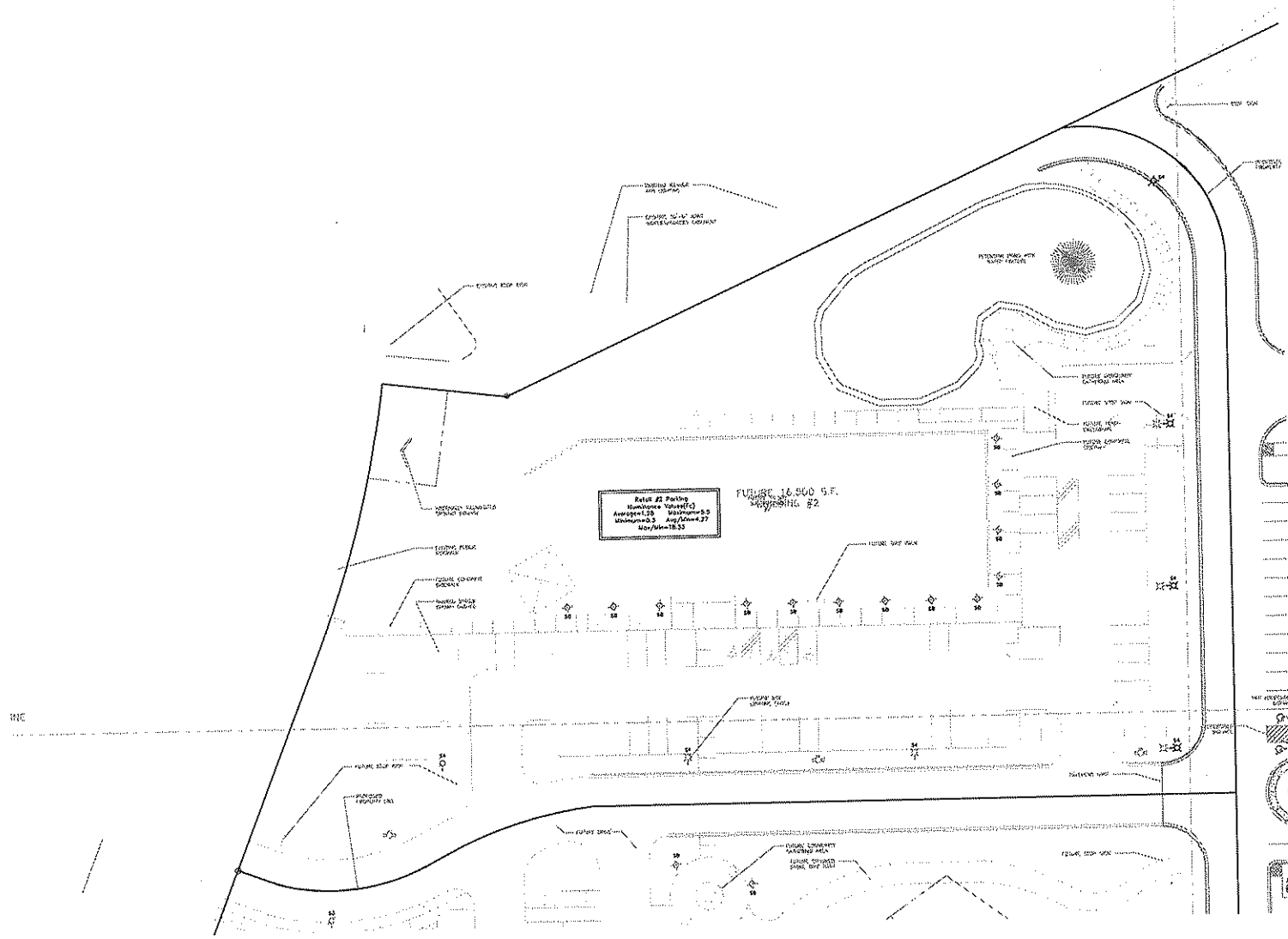
DATE: \_\_\_\_\_

---

This document is the property of Iconica and is not to be distributed, copied, or reproduced in any form without the written consent of Iconica. If you have any questions, please contact the project manager.

PROJECT #: 2007090  
 SHEET NUMBER  
**E100.3**  
 7704 Lark, Inc.

PROJECT: 2010-004



Relief #2 Parking  
Number of Stalls: 22  
Average Volume: 120  
Maximum: 250  
Minimum: 0-25  
Avg/Week: 2.7  
Max/Min: 18-25

FUTURE 16,500 S.F.  
RELIANCE #2

1 PARTIAL ELECTRICAL SITE PLAN  
SCALE: 1/8" = 1'-0"



**STEINHAFELS FURNITURE STORE**

MADISON EAST STORE, LLC  
1031 HIGHLAND DRIVE  
MADISON, WI 53717

ISSUE DATES:

REVISED DATE:

This is a partial electrical site plan and does not include all electrical systems. It is for informational purposes only and is not to be used for construction or other purposes without the approval of the engineer of record.

PROJECT #: 2010004  
SHEET NUMBER

**E100.4**

7000 South, Inc.