

# Crowne Plaza Hotel

• City of Madison Land Use Application • Submitted by Gateway Project LLC • December 1, 2010 •

## Contents

- C1: Existing Conditions Plan
- C2: Site Plan—West
- C3: Site Plan—East
- C4: Grading and Erosion Control Plan—West
- C5: Grading and Erosion Control Plan—East
- C6: Utility Plan—West
- C7: Utility Plan—East
- C8: Construction Details
- L1.0: Overall Site Landscaping Plan
- L1.1: Landscaping Plan—West
- L1.2: Landscaping Plan—East
- L1.3: Landscape and Infiltration Basin Planting Details
- A200: Lower Level Parking Plan
- A201: First Floor Plan
- A202: Typical Floor Plan
- A203: Roof Plan
- A401: West and North Elevations
- A402: East and South Elevations
- E001: Site Lighting Photometric Plan
- E002: Site Lighting Plan

## Location



## Project Team

**vierbicher**  
planners | engineers | advisors

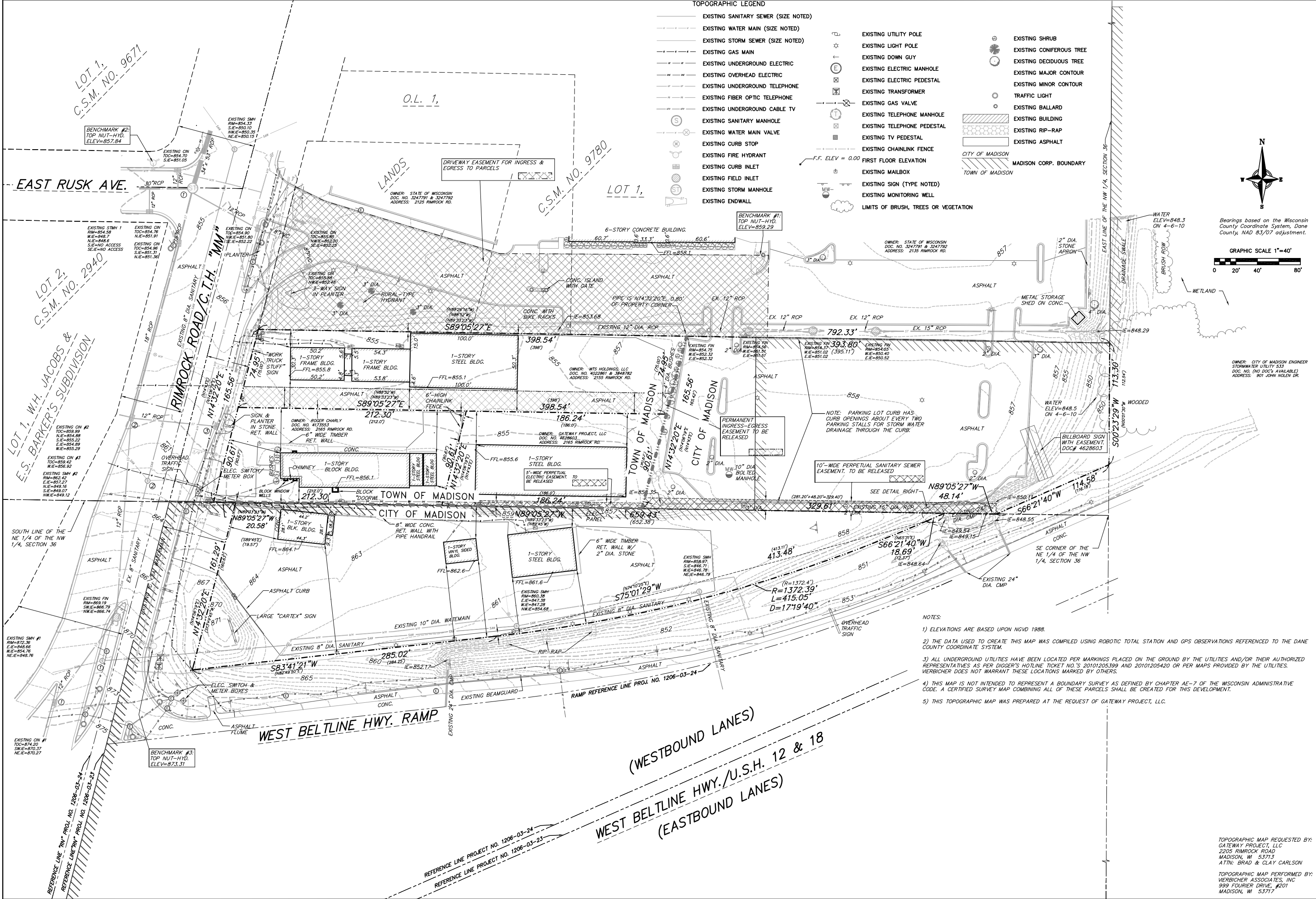


999 Fourier Drive #201  
Madison, WI 53717  
Phone: (608) 826-0532  
Fax: (608) 826-0530



**STRANG**

6411 Mineral Point Road  
Madison, WI 53705  
Phone: (608) 276-9200  
Fax: (608) 276-9204

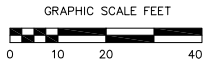


**Existing Conditions Plan**  
**Crowne Plaza Hotel**  
**Town & City of Madison**  
**Dane County Wisconsin**

REVISIONS	NO.	DATE	REMARKS
SCALE			1" = 40' - 22"x34"
DATE			12/1/10
DRAFTER			MKRI SBAU DEHL
CHECKED			
PROJECT NO.			33107207
SHEET			C
DWG. NO.			1

TOPOGRAPHIC MAP REQUESTED BY:  
GATEWAY PROJECT, LLC  
2205 RIMROCK ROAD  
MADISON, WI 53713  
ATTN: BRAD & CLAY CARLSON

TOPOGRAPHIC MAP PERFORMED BY:  
VIERBICHER ASSOCIATES, INC.  
999 FOSTER DRIVE, #201  
MADISON, WI 53717



TH LINE OF THE  
1/4 OF THE NW  
SECTION 36

Parking Lot Plan Site Information Block

Site Address: 2205 Rimrock Road  
Site acreage: 4.47 AC

Number of building stories: 7, 5, 1  
Building height: 86'  
DILHR type of construction: New Structures

Total square footage of building: 206,440 SF

Use of property: Hotel, Conference Center w/ Restaurant  
Gross square feet of office: N/A  
Gross square feet of retail area: N/A  
Number of employees during construction: 262  
Number of employees in hotel (full & part time): 150  
Capacity of restaurant: ~230  
Capacity of conference: ~660

Number of bicycle stalls shown: 36

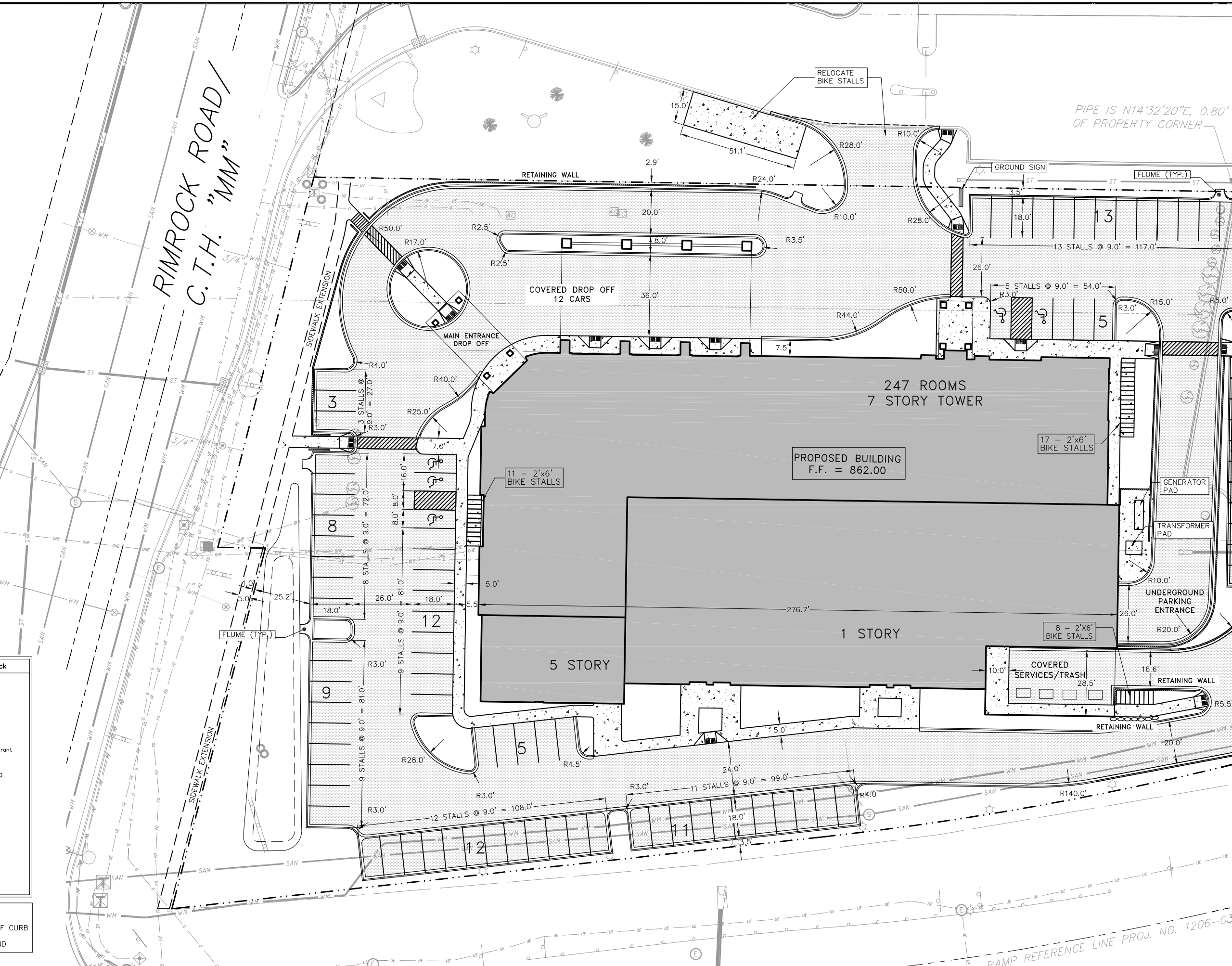
Number of parking stalls:

	shown
Small Car	0
Large Car	282
Accessible	5
Total	287

Number of trees shown: See Landscape Plan

NOTES:

1. ALL DIMENSIONS SHOWN ARE TO FACE OF CURB
2. SEE UTILITY PLAN FOR PROPOSED LEGEND

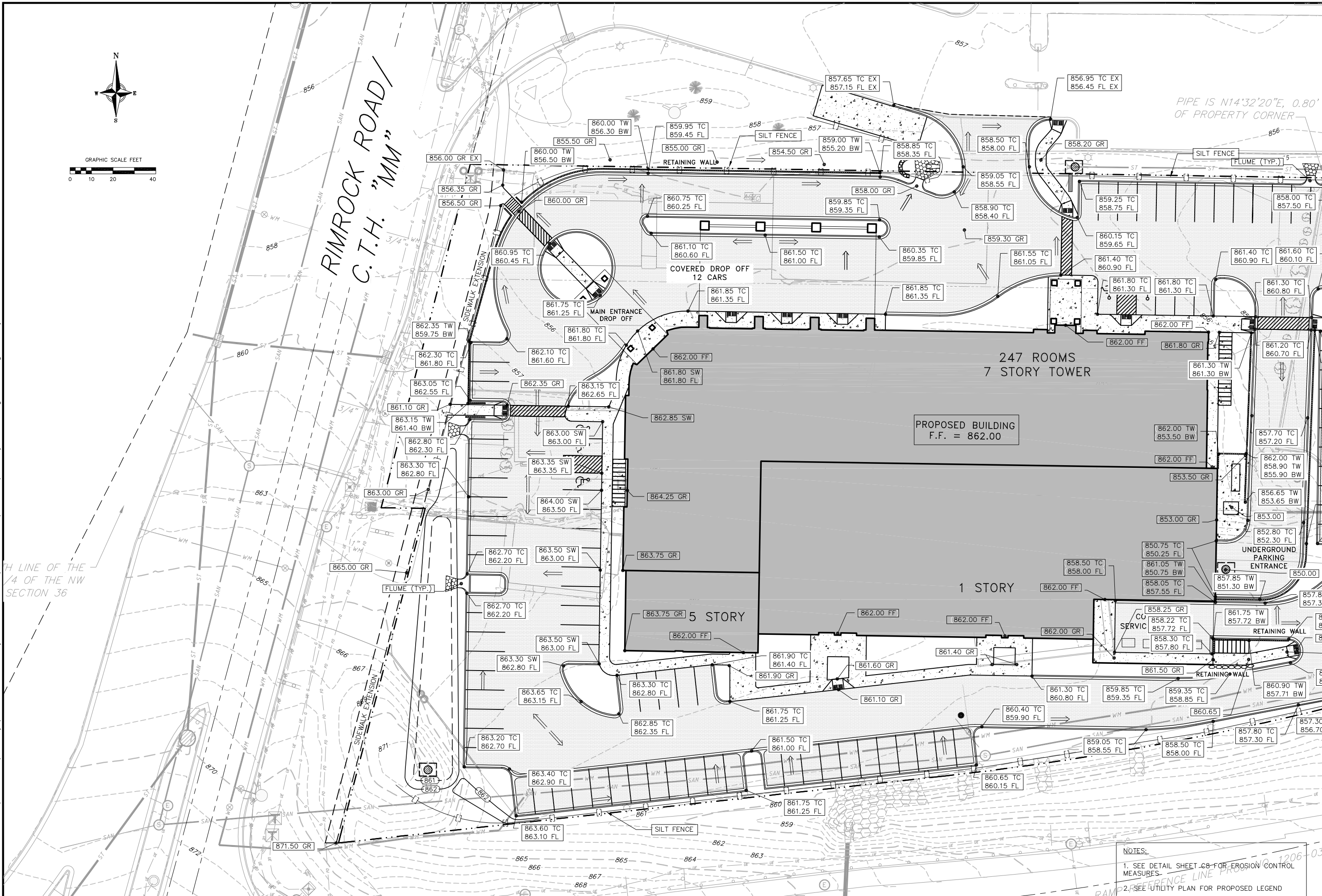


Site Plan - West

Crowne Plaza Hotel  
Town & City of Madison  
Dane County, Wisconsin

REVISIONS		REVISIONS		REVISIONS	
NO.	DATE	REMARKS	NO.	DATE	REMARKS
SCALE					
1" = 20' - 22"x34"					
DATE					
12/1/10					
DRAFTER					
MKRI SBAU DEHL					
CHECKED					
TSCH2					
PROJECT NO.					
33107207					
SHEET					
C					
DWG. NO.					
2					

SCALE	1" = 20' - 22"x34"
DATE	12/1/10
DRAFTER	MKRI SBAU DEHL
CHECKED	TSCH2
PROJECT NO.	33107207
SHEET	C
DWG. NO.	3



verbicher

planners | engineers | advisors

REEDSBURG - MADISON - PRAIRIE DU CHIEN

999 Prairie du Chien Ave. Suite 337

Phone: (608) 824-3332 Fax: (608) 824-3330

Grading and Erosion Control Plan - West

Crowne Plaza Hotel

Town & City of Madison

Dane County, Wisconsin

NO.	DATE	REVISIONS	REMARKS
1	12/1/10		
2			
3			
4			

SCALE

1" = 20' - 22"x34"

DATE

12/1/10

DRAFTER

MKRI SBAU DEHL

CHECKED

TSCH2

PROJECT NO.

33107207

SHEET

C

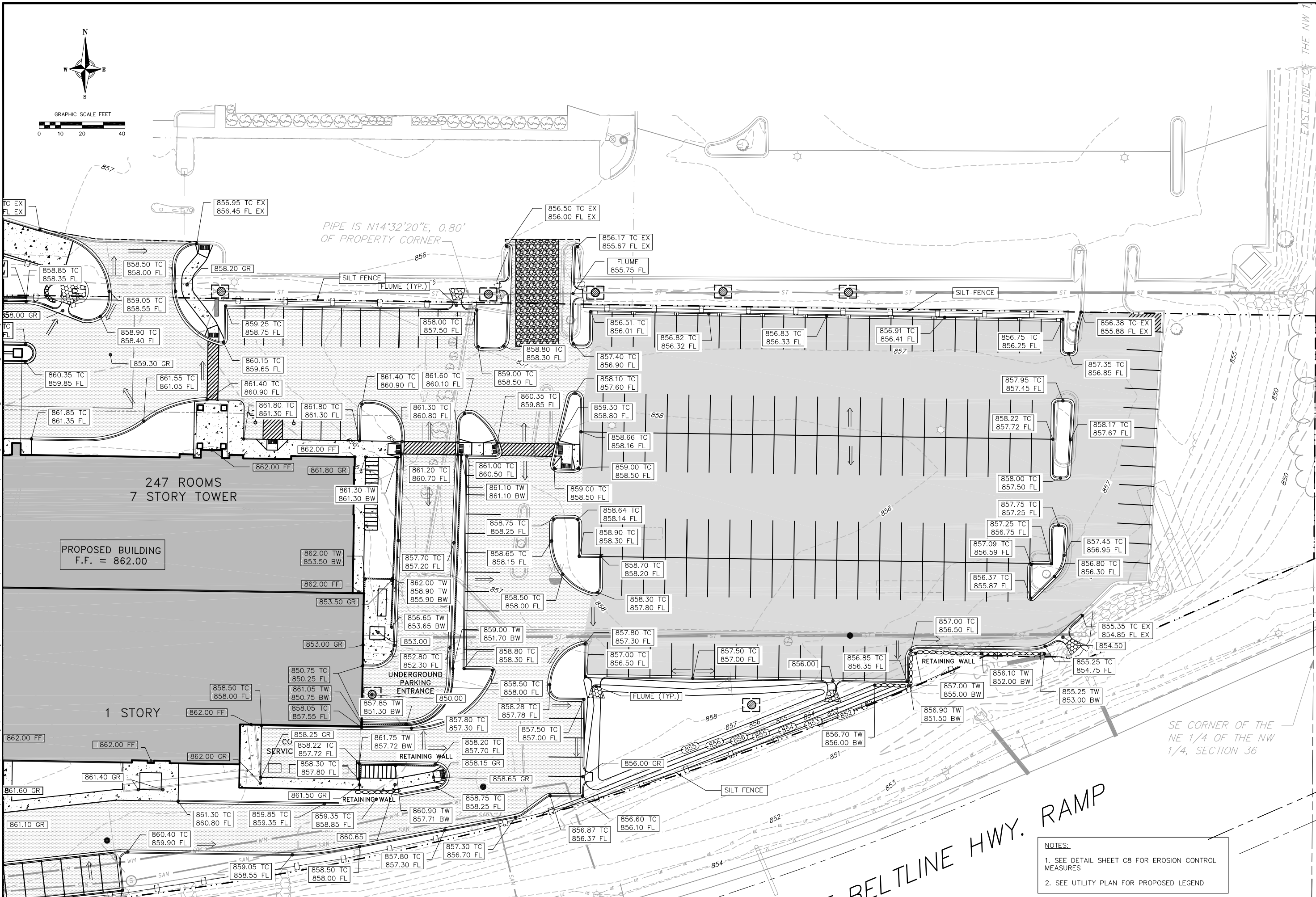
DWG. NO.

4

NOTES:

1. SEE DETAIL SHEET C8 FOR EROSION CONTROL MEASURES.

2. SEE UTILITY PLAN FOR PROPOSED LEGEND



PROPOSED BUILDING  
F.F. = 862.00

247 ROOMS  
7 STORY TOWER

1 STORY

CO  
SERVIC

UNDERGROUND  
PARKING  
ENTRANCE

RETAINING WALL

RETAINING WALL

SILT FENCE

FLUME (TYP.)

SILT FENCE

FLUME (TYP.)

SILT FENCE

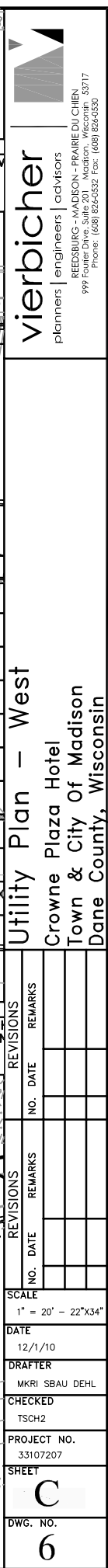
PIPE IS N14°32'20"E, 0.80'  
OF PROPERTY CORNER

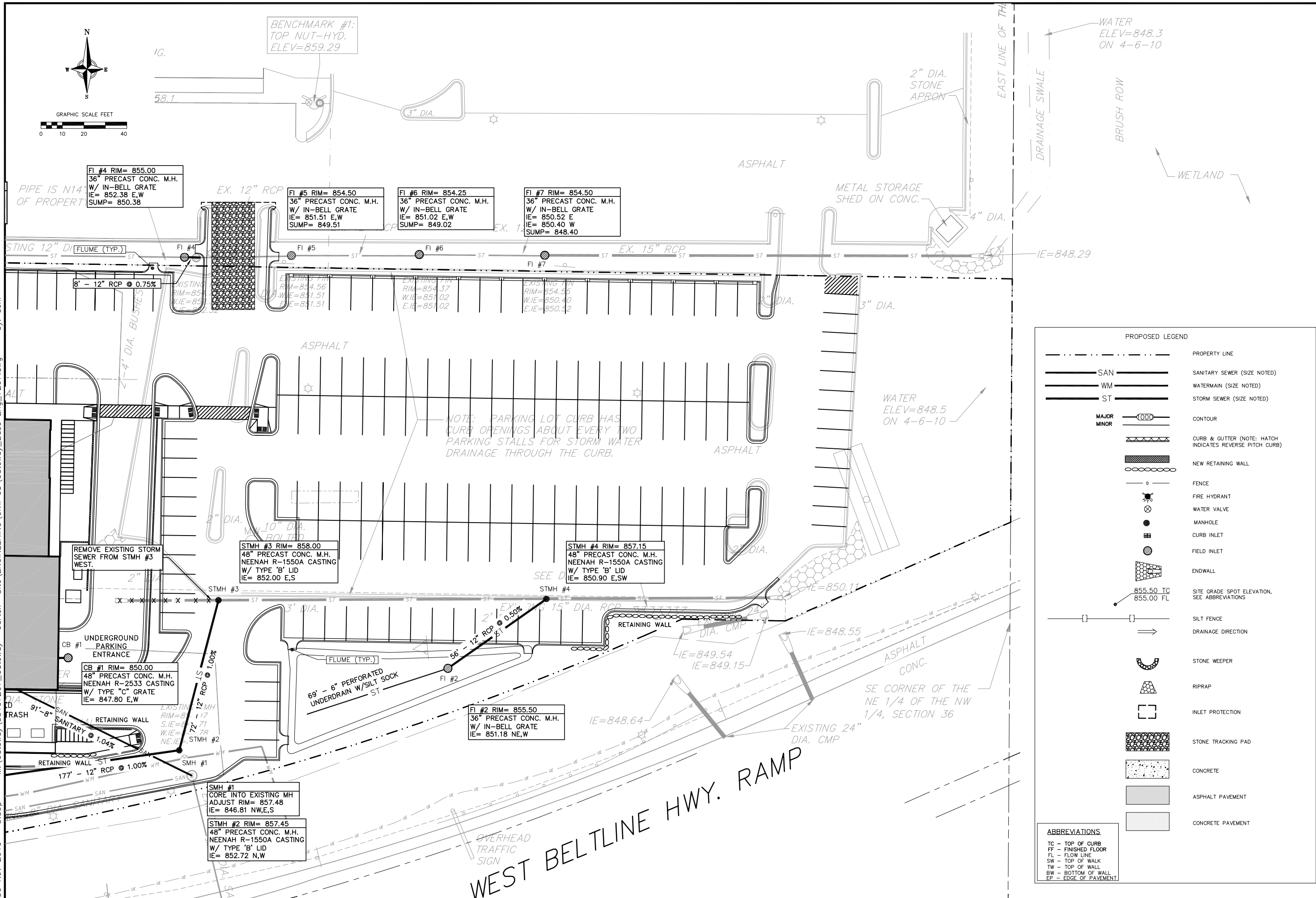
SE CORNER OF THE  
NE 1/4 OF THE NW  
1/4, SECTION 36

BELTLINE HWY. RAMP

- NOTES:
1. SEE DETAIL SHEET C8 FOR EROSION CONTROL MEASURES
  2. SEE UTILITY PLAN FOR PROPOSED LEGEND

REVISIONS		REVISIONS	
NO.	DATE	NO.	DATE
SCALE			
1" = 20' - 22"X34"			
DATE			
12/1/10			
DRAFTER			
MKRI SBAU DEHL			
CHECKED			
TSCH2			
PROJECT NO.			
33107207			
SHEET			
C			
DWG. NO.			
5			



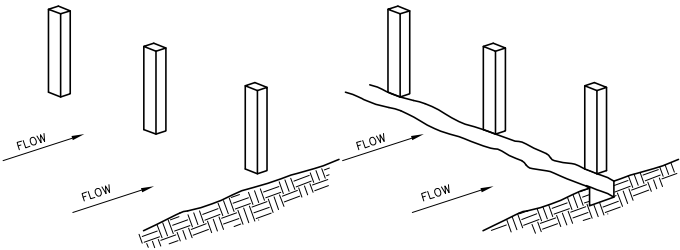


EROSION CONTROL MEASURES

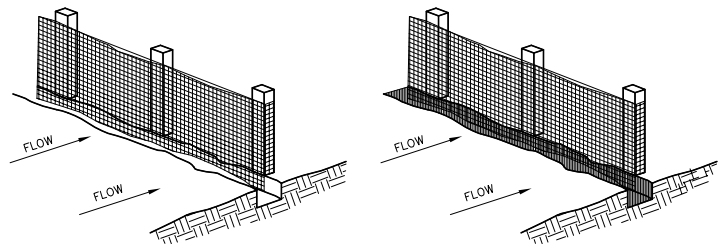
1. EROSION CONTROL SHALL BE IN ACCORDANCE WITH THE CITY OF MADISON EROSION CONTROL ORDINANCE AND CHAPTER NR 216 OF THE WISCONSIN ADMINISTRATIVE CODE.
2. CONSTRUCT AND MAINTAIN ALL EROSION AND SEDIMENT CONTROL MEASURES IN ACCORDANCE WITH WISCONSIN DNR TECHNICAL STANDARDS (<http://dnr.wi.gov/runoff/stormwater/techstds.htm>) AND WISCONSIN CONSTRUCTION SITE BEST MANAGEMENT PRACTICE HANDBOOK.
3. INSTALL SEDIMENT CONTROL PRACTICES (TRACKING PAD, PERIMETER SILT FENCE, ETC.) PRIOR TO INITIATING OTHER LAND DISTURBING CONSTRUCTION ACTIVITIES.
4. THE CONTRACTOR IS REQUIRED TO MAKE EROSION CONTROL INSPECTIONS AT THE END OF EACH WEEK AND WHEN 0.5 INCHES OF RAIN FALLS WITHIN 24 HOURS. INSPECTION REPORTS SHALL BE PREPARED AND FILED AS REQUIRED BY THE DNR AND CITY OF MADISON. ALL MAINTENANCE WILL FOLLOW AN INSPECTION WITHIN 24 HOURS.
5. EROSION CONTROL IS THE RESPONSIBILITY OF THE CONTRACTOR UNTIL ACCEPTANCE OF THIS PROJECT. EROSION CONTROL MEASURES AS SHOWN SHALL BE THE MINIMUM PRECAUTIONS THAT WILL BE ALLOWED. ADDITIONAL EROSION CONTROL MEASURES, AS REQUESTED IN WRITING BY THE STATE OR LOCAL INSPECTORS, OR THE DEVELOPER'S ENGINEER, SHALL BE INSTALLED WITHIN 24 HOURS.
6. A 3" CLEAR STONE TRACKING PAD SHALL BE INSTALLED AT THE END OF ROAD CONSTRUCTION LIMITS TO PREVENT SEDIMENT FROM BEING TRACKED ONTO THE ADJACENT PAVED PUBLIC ROADWAY. SEDIMENT TRACKING PAD SHALL CONFORM TO WISDNR TECHNICAL STANDARD 1057. SEDIMENT REACHING THE PUBLIC ROAD SHALL BE REMOVED BY STREET CLEANING (NOT HYDRAULIC FLUSHING) BEFORE THE END OF EACH WORK DAY.
7. **STABILIZED DISTURBED GROUND:** ANY SOIL OR DIRT PILES WHICH WILL REMAIN IN EXISTENCE FOR MORE THAN 7-CONSECUTIVE DAYS, WHETHER TO BE WORKED DURING THAT PERIOD OR NOT, SHALL NOT BE LOCATED WITHIN 25-FEET OF ANY ROADWAY, PARKING LOT, PAVED AREA, OR DRAINAGE STRUCTURE OR CHANNEL (UNLESS INTENDED TO BE USED AS PART OF THE EROSION CONTROL MEASURES). TEMPORARY STABILIZATION AND CONTROL MEASURES (SEEDING, MULCHING, TARPING, EROSION MATTING, BARRIER FENCING, ETC.) ARE REQUIRED FOR THE PROTECTION OF DISTURBED AREAS AND SOIL PILES, WHICH WILL REMAIN UN-WORKED FOR A PERIOD OF MORE THAN 14-CONSECUTIVE CALENDAR DAYS. THESE MEASURES SHALL REMAIN IN PLACE UNTIL SITE HAS STABILIZED.
8. **SITE DE-WATERING:** WATER PUMPED FROM THE SITE SHALL BE TREATED BY TEMPORARY SEDIMENTATION BASINS OR OTHER APPROPRIATE CONTROL MEASURES. SEDIMENTATION BASINS SHALL HAVE A DEPTH OF AT LEAST 3 FEET, BE SURROUNDED BY SNOWFENCE OR EQUIVALENT BARRIER AND HAVE SUFFICIENT SURFACE AREA TO PROVIDE A SURFACE SETTLING RATE OF NO MORE THAN 750 GALLONS PER SQUARE FOOT PER DAY AT THE HIGHEST DEWATERING PUMPING RATE. WATER MAY NOT BE DISCHARGED IN A MANNER THAT CAUSES EROSION OF THE SITE, A NEIGHBORING SITE, OR THE BED OR BANKS OF THE RECEIVING WATER. POLYMERS MAY BE USED AS DIRECTED BY DNR TECHNICAL STANDARD 1061 (DE-WATERING).
9. WASHED STONE WEEPERS OR TEMPORARY EARTH BERMS SHALL BE BUILT PER PLAN BY CONTRACTOR TO TRAP SEDIMENT OR SLOW THE VELOCITY OF STORM WATER.
10. SEE DETAIL SHEETS FOR RIP-RAP SIZING. IN NO CASE WILL RIP-RAP BE SMALLER THAN 3" TO 6".
11. INLET FILTERS ARE TO BE PLACED IN STORMWATER INLET STRUCTURES AS SOON AS THEY ARE INSTALLED. ALL PROJECT AREA STORM INLETS NEED WISCONSIN D.O.T. TYPE D INLET PROTECTION. THE FILTERS SHALL BE MAINTAINED UNTIL THE CITY HAS ACCEPTED THE BINDER COURSE OF ASPHALT.
12. RESTORATION (SEED, FERTILIZE AND MULCH) SHALL BE PER SPECIFICATIONS ON THIS SHEET UNLESS SPECIAL RESTORATION IS CALLED FOR ON THE LANDSCAPE PLAN OR THE DETENTION BASIN DETAIL SHEET.
13. TERRACES SHALL BE RESTORED WITH 6" TOPSOIL, PERMANENT SEED, FERTILIZER AND MULCH..
14. SEED, FERTILIZER AND MULCH SHALL BE APPLIED WITHIN 7 DAYS AFTER FINAL GRADE HAS BEEN ESTABLISHED. IF DISTURBED AREAS WILL NOT BE RESTORED IMMEDIATELY AFTER ROUGH GRADING, TEMPORARY SEED SHALL BE PLACED.
15. FOR THE FIRST SIX WEEKS AFTER RESTORATION (E.G. SEED & MULCH, EROSION MAT, SOD) OF A DISTURBED AREA, INCLUDE SUMMER WATERING PROVISIONS OF ALL NEWLY SEEDED AND MULCHED AREAS WHENEVER 7 DAYS ELAPSE WITHOUT A RAIN EVENT.
16. EROSION MAT (TYPE I CLASS A PER WISCONSIN D.O.T. P.A.L.) SHALL BE INSTALLED ON ALL SLOPES 3:1 OR GREATER BUT LESS THAN 1:1.
17. EROSION MAT (TYPE I, CLASS B PER WISCONSIN D.O.T. P.A.L.) SHALL BE INSTALLED ON THE BOTTOM (INVERT) OF ROADSIDE DITCHES/SWALES AS SHOWN ON THIS PLAN, 1 ROLL WIDTH.
18. INSTALL MINIMUM 6'-7" WIDE EROSION MAT ALONG THE BACK OF CURB AFTER TOPSOIL HAS BEEN PLACED IN THE TERRACE IF THIS AREA WILL NOT BE SEEDED AND MULCHED WITHIN 48 HOURS OF PLACING TOPSOIL.
19. SILT FENCE TO BE USED ACROSS AREAS OF THE LOT THAT SLOPE TOWARDS A PUBLIC STREET OR WATERWAY. SEE DETAILS.
20. SEDIMENT SHALL BE CLEANED FROM CURB AND GUTTER AFTER EACH RAINFALL AND PRIOR TO PROJECT ACCEPTANCE.
21. ACCUMULATED CONSTRUCTION SEDIMENT SHALL BE REMOVED FROM ALL PERMANENT BASINS TO THE ELEVATION SHOWN ON THE GRADING PLAN FOLLOWING THE STABILIZATION OF DRAINAGE AREAS.
22. ALL CONSTRUCTION ENTRANCES SHALL HAVE TEMPORARY ROAD CLOSED SIGNS THAT WILL BE IN PLACE WHEN THE ENTRANCE IS NOT IN USE AND AT THE END OF EACH DAY.
23. ANY PROPOSED CHANGES TO THE EROSION CONTROL PLAN MUST BE SUBMITTED AND APPROVED BY DANE COUNTY LAND CONSERVATION OR PERMITTING MUNICIPALITY.
24. THE CITY, OWNER AND/OR ENGINEER MAY REQUIRE ADDITIONAL EROSION CONTROL MEASURES AT ANY TIME DURING CONSTRUCTION.

CONSTRUCTION OF A FILTER BARRIER

1. DRIVE STAKES INTO THE GROUND AT LEAST 8". STAKE SPACING TO BE PER MANUFACTURERS RECOMMENDATIONS BUT IN NO CASE, MORE THAN 8' BETWEEN STAKES.
2. EXCAVATE A 4" x 6" DEEP TRENCH UPSLOPE ALONG THE LINE OF STAKES.



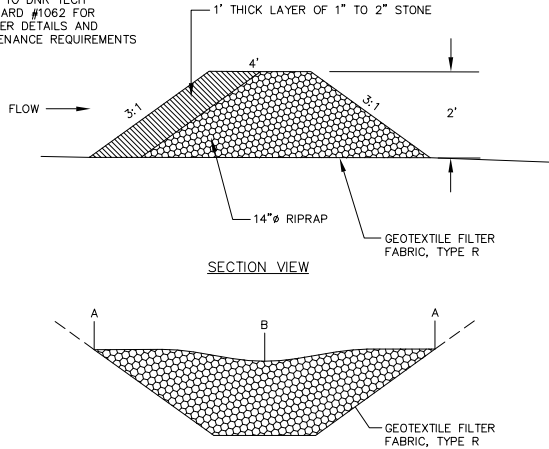
3. STAPLE FILTER MATERIAL ON UPSLOPE SIDE OF STAKES AND EXTEND IT INTO THE TRENCH. WHEN JOINTS ARE NECESSARY, OVERLAP MATERIAL BETWEEN TWO STAKES AND FASTEN SECURELY.
4. BACKFILL AND COMPACT THE EXCAVATED SOIL.



SILT FENCE

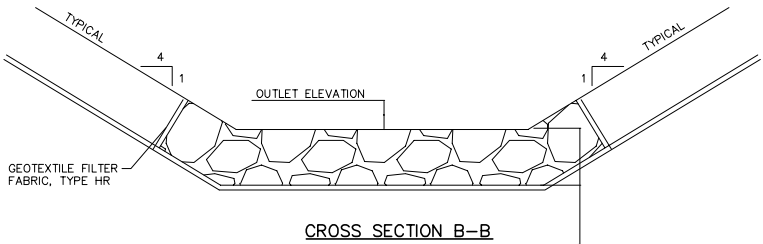
NOT TO SCALE

\* REFER TO DNR TECH STANDARD #1062 FOR FURTHER DETAILS AND MAINTENANCE REQUIREMENTS

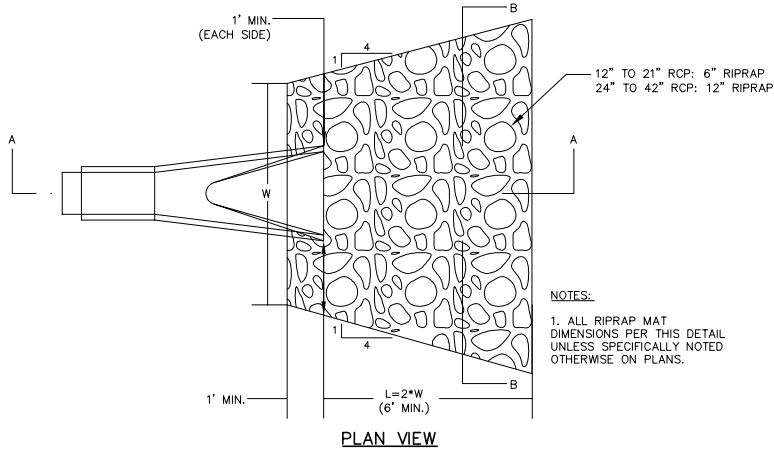


STONE WEEPER

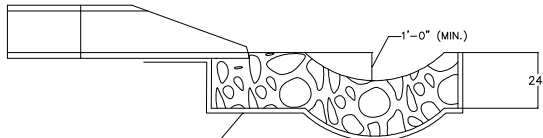
NO SCALE



CROSS SECTION B-B



PLAN VIEW



CROSS SECTION A-A

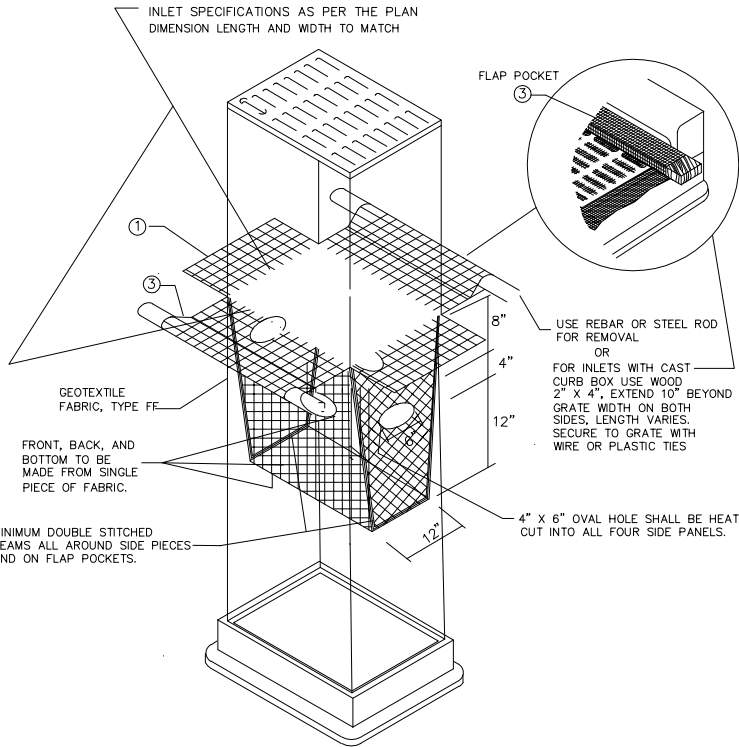
NOTE:

IF RIPRAP OUTLET/LEVEL SPREADER IS LOCATED IN AN AREA WHERE THE GRADING DOES NOT LEND ITSELF TO PLACEMENT OF THE RIPRAP PER THIS DETAIL (SUCH AS A CULVERT ENTERING A CHANNEL PERPENDICULAR TO THE DIRECTION OF FLOW), THE ENGINEER SHOULD WORK WITH THE CONTRACTOR TO DETERMINE EFFECTIVE PLACEMENT AND LIMITS OF THE RIPRAP MAT.

CONSTRUCTION SEQUENCE AFTER BUILDING DEMOLITION:

1. INSTALL SILT FENCE AND TRACKING PAD
2. STRIP TOPSOIL & EXISTING PAVEMENT AREAS.
3. ROUGH GRADE BASINS, PARKING, DRIVE AND BUILDING AREAS.
4. CONSTRUCT UNDERGROUND UTILITIES (EXCEPT BIORETENTION UNDERDRAINS).
5. INSTALL INLET PROTECTION.
6. CONSTRUCT PARKING LOTS AND DRIVES (STONE BASE, CURB & GUTTER, AND SIDEWALK).
7. RESTORE LANDSCAPE AREAS PER PLAN.
8. ONCE SITE HAS BEEN RESTORED W/ PAVEMENT, SOD, & LANDSCAPE PLANTINGS, CONSTRUCT & PLANT BIORETENTION BASINS (INCLUDING UNDERDRAINS). CONSTRUCTION OF THESE BASINS PRIOR TO RESTORATION MAY RESULT IN FAILURE FROM CONSTRUCTION SEDIMENTATION.
9. REMOVE TRACKING PAD, SILT FENCE AND INLET PROTECTION.

NOTE: ALTERNATIVE PHASING MAY BE ALLOWED IF SPECIFIC MEASURES TO PROTECT THE BIORETENTION BASINS FROM SEDIMENTATION ARE APPROVED BY ENGINEER.



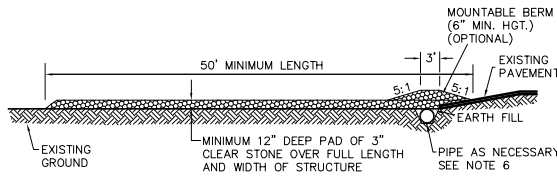
INLET PROTECTION, TYPE D

(CAN BE INSTALLED IN ANY INLET TYPE WITH OR WITHOUT A CURB BOX AS PER NOTE 2 )

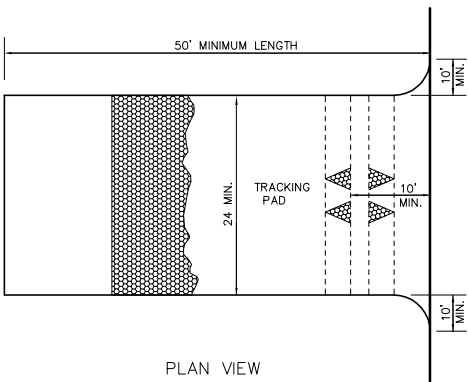
DO NOT INSTALL INLET PROTECTION TYPE D IN INLETS SHALLOWER THAN 30", MEASURED FROM THE BOTTOM OF THE INLET TO THE TOP OF THE GRATE. TRIM EXCESS FABRIC IN THE FLOW LINE TO WITHIN 3" OF THE GRATE. THE INSTALLED BAG SHALL HAVE A MINIMUM SIDE CLEARANCE, BETWEEN THE INLET WALLS AND THE BAG, MEASURED AT THE BOTTOM OF THE OVERFLOW HOLES, OF 3". WHERE NECESSARY THE CONTRACTOR SHALL CINCH THE BAG, USING PLASTIC ZIP TIES, TO ACHIEVE THE 3" CLEARANCE. THE TIES SHALL BE PLACED AT A MAXIMUM OF 4" FROM THE BOTTOM OF THE BAG.

INLET PROTECTION

NOT TO SCALE



PROFILE VIEW



PLAN VIEW

- 1) FOLLOW WISCONSIN DNR TECHNICAL STANDARD 1057 FOR FURTHER DETAILS AND INSTALLATION.
- 2) LENGTH - MINIMUM OF 50'.
- 3) WIDTH - 24' MINIMUM, SHOULD BE FLARED AT THE EXISTING ROAD TO PROVIDE A TURNING RADIUS.
- 4) ON SITES WITH A HIGH GROUND WATER TABLE OR WHERE SATURATED CONDITIONS EXIST, GEOTEXTILE FABRIC SHALL BE PLACED OVER EXISTING GROUND PRIOR TO PLACING STONE. FABRIC SHALL BE WISDOT TYPE-HR GEOTEXTILE FABRIC.
- 5) STONE - CRUSHED 3" CLEAR STONE SHALL BE PLACED AT LEAST 12" DEEP OVER THE ENTIRE LENGTH AND WIDTH OF ENTRANCE.
- 6) SURFACE WATER - ALL SURFACE WATER FLOWING TO OR DIVERTED TOWARDS CONSTRUCTION ENTRANCES SHALL BE PIPED THROUGH THE ENTRANCE, MAINTAINING POSITIVE DRAINAGE. PIPE INSTALLED THROUGH THE STABILIZED CONSTRUCTION ENTRANCE SHALL BE PROTECTED WITH A MOUNTABLE BERM WITH 5:1 SLOPES AND MINIMUM OF 6" STONE OVER THE PIPE. PIPE SHALL BE SIZED ACCORDING TO THE DRAINAGE REQUIREMENTS. WHEN THE ENTRANCE IS LOCATED AT A HIGH SPOT AND HAS NO DRAINAGE TO CONVEY A PIPE SHALL NOT BE NECESSARY. THE MINIMUM PIPE DIAMETER SHALL BE 6". CONTRACTOR SHALL BE RESPONSIBLE FOR THE MAINTENANCE OF SAID PIPE.
- 7) LOCATION - A STABILIZED CONSTRUCTION ENTRANCE SHALL BE LOCATED WHERE CONSTRUCTION TRAFFIC ENTERS AND/OR LEAVES THE CONSTRUCTION SITE. VEHICLES LEAVING THE SITE MUST TRAVEL OVER THE ENTIRE LENGTH OF THE TRACKING PAD.

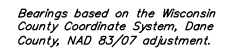
STONE TRACKING PAD

NOT TO SCALE


Construction Details

Crowne Plaza Hotel  
Town & City Of Madison  
Dane County Wisconsin

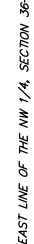
REVISIONS		REVISIONS	
NO.	DATE	NO.	DATE
SCALE		SCALE	
As Shown		As Shown	
DATE		DATE	
12/1/10		12/1/10	
DRAFTER		DRAFTER	
MKRI SBAU DEHL		MKRI SBAU DEHL	
CHECKED		CHECKED	
TSCH2		TSCH2	
PROJECT NO.		PROJECT NO.	
33107207		33107207	
SHEET		SHEET	
C		C	
DWG. NO.		DWG. NO.	
8		8	



**GRAPHIC SCALE 1"=40'**



0 20' 40' 80'



THE NW

On 36-card Databases

Plant Material List

Quantity	Code	Name	Scientific Name	Common Name	Planting Size
10	AB	Asar X Freeman's Autumn Blaze	<i>Asar X Freeman's Autumn Blaze</i>	Autumn Blaze Maple	2 1/2" B&B
5	AB	Amelanchier X Grand Autumn Ball	<i>Amelanchier X Grand Autumn Ball</i>	Grand Ball Serviceberry	2 1/2" B&B
10	AM	Amelanchier Maple Autumn Ball	<i>Amelanchier Maple Autumn Ball</i>	Autumn Gold Crabapple	2 1/2" B&B
5	CCF	Pyrus Calleryana 'Chandler'	<i>Pyrus Calleryana 'Chandler'</i>	Chandler's Callery Pear	2" B&B
2	CCF	Calla Occidentalis	<i>Calla Occidentalis</i>	Common Hickberry	2 1/2" B&B
5	HRB	Bush-Nrgs 'Cady' (db)	<i>Bush-Nrgs 'Cady' (db)</i>	Heritage River Birch (db)	8" B&B
1	PAK	Asar X Freeman's (db)	<i>Asar X Freeman's (db)</i>	Purple Maple	2 1/2" B&B
1	OC	Quercus Palustris	<i>Quercus Palustris</i>	Pink Oak	2 1/2" B&B
3	PURP	Malus Purpurea (db)	<i>Malus Purpurea (db)</i>	Purple Prince Crabapple	2" B&B
5	RJC	Malus Red Jewel (db)	<i>Malus Red Jewel (db)</i>	Red Jewel Crabapple (db)	4" B&B
8	RSL	Amelanchier Alabaster Regent	<i>Amelanchier Alabaster Regent</i>	Regent Serviceberry	1/2" C&T
7	SHS	Gleditsia Tricarpa Lee Dynasty	<i>Gleditsia Tricarpa Lee Dynasty</i>	Stylen Tree Honeylocust	2 1/2" B&B
Conifer Evergreen					
Quantity	Code	Name	Scientific Name	Common Name	Planting Size
4	B&B	Picea Glauca Var 'Seymour'	<i>Picea Glauca Var 'Seymour'</i>	Black Hills Spruce	8" B&B
5	BSP	Picea Strobus Blue Star®	<i>Picea Strobus Blue Star®</i>	Blue Star Eastern White Pine	#6 C&T
21	BE	Juniperus Sabina 'Blue Sp.'	<i>Juniperus Sabina 'Blue Sp.'</i>	Blue Sp. Juniper	#12 C&T
4	EW	Picea Strobus	<i>Picea Strobus</i>	Eastern White Pine	4" B&B
12	HA	Taxus Canadensis 'Hemlock'	<i>Taxus Canadensis 'Hemlock'</i>	Hemlock	4" B&B
13	HP	Juniperus Chamae 'Moppy'	<i>Juniperus Chamae 'Moppy'</i>	Moppy Juniper	1/2" C&T
1	R&H&S	Picea Canadensis 'Monogrammy'	<i>Picea Canadensis 'Monogrammy'</i>	Monogrammy Blue Spruce	#6 C&T
20	MB	Juniperus Chinensis 'Foundation'	<i>Juniperus Chinensis 'Foundation'</i>	Foundation Juniper	5" B&B
17	TY	Taxus X Modio 'Tasmanii'	<i>Taxus X Modio 'Tasmanii'</i>	Tasmanii Tree	18" B&B
Ferns					
Quantity	Code	Name	Scientific Name	Common Name	Planting Size
14	AS	Sedum 'Autumn Joy'	<i>Sedum 'Autumn Joy'</i>	Autumn Joy Sedum	1/2" C&T
13	BS	Isis Sterilis 'Buster & Sugar'	<i>Isis Sterilis 'Buster &amp; Sugar'</i>	Buster & Sugar Iris	1/2" C&T
20	GF	Silene X Supera 'Orchid-leaf'	<i>Silene X Supera 'Orchid-leaf'</i>	East Friesland Sage	1/2" C&T
14	GH	Horta 'Cascadia'	<i>Horta 'Cascadia'</i>	Gascadia Hosta	1/2" C&T
18	HT	Chelidonium Lyneis 'Hot Lips'	<i>Chelidonium Lyneis 'Hot Lips'</i>	Hot Lips 'Chelidonium	1/2" C&T
18	HTC	Chelidonium Lyneis 'Hot Lips'	<i>Chelidonium Lyneis 'Hot Lips'</i>	Hot Lips 'Chelidonium	1/2" C&T
13	LB	Salicapsis Anabasis 'Red Fire'	<i>Salicapsis Anabasis 'Red Fire'</i>	Red Fire Salicapsis	1/2" C&T
32	PPC	Heuchera 'Palace Purple'	<i>Heuchera 'Palace Purple'</i>	Palace Purple Coral Bell	1/2" C&T
38	PP	Edemusa 'Clay Cone 2'	<i>Edemusa 'Clay Cone 2'</i>	Pine Meadowhouse Coneflower	1/2" C&T
18	PD	Sporobolus Henrici	<i>Sporobolus Henrici</i>	Pine Dragoon	1/2" C&T
41	SD	Hemerocallis 'Sally De Oro'	<i>Hemerocallis 'Sally De Oro'</i>	Sally De Oro Daylily	1/2" C&T
Shrub					
Quantity	Code	Name	Scientific Name	Common Name	Planting Size
5	AA	Abutilon Abrotanica 'Annabell'	<i>Abutilon Abrotanica 'Annabell'</i>	Annabell Abutilon	1/2" C&T
22	GV	Banua Macro Var Kororan 'Green Velvet'	<i>Banua Macro Var Kororan 'Green Velvet'</i>	Green Velvet Bougainvillea	1/2" C&T
4	GL	Rosa 'Armstrong's Glorious'	<i>Rosa 'Armstrong's Glorious'</i>	Glorious Flowering Dogwood	1/2" C&T
3	SP	Spirea Japanese 'Very Shady'	<i>Spirea Japanese 'Very Shady'</i>	Very Shady Spirea Tree (Lark)	2" B&B
8	MC	Spirea Japanese 'Maggie Carol'	<i>Spirea Japanese 'Maggie Carol'</i>	Maggie Carol Spirea	1/2" C&T
33	NV	Rosa 'Nearly Wild Rose'	<i>Rosa 'Nearly Wild Rose'</i>	Nearly Wild Rose	1/2" C&T
9	RP	Wigelia Florida 'Red Prince'	<i>Wigelia Florida 'Red Prince'</i>	Red Prince Wigelia	1/2" C&T
2	TR	Rosa 'Thornless Regent'	<i>Rosa 'Thornless Regent'</i>	Thornless Regent Rose	1/2" C&T
9	TR	Spirea Brindleyi 'Tut'	<i>Spirea Brindleyi 'Tut'</i>	Tut Spirea	1/2" C&T
11	WV	Wigelia Florida 'Alexander'	<i>Wigelia Florida 'Alexander'</i>	Wine & Rose Wigelia	1/2" C&T

 the  
bruce  
company  
OF WISCONSIN, INC.

LANDSCAPE ARCHITECTS  
LANDSCAPE CONTRACTORS

2830 PARKMER STREET  
P.O. BOX 620330  
MIDDLETON, WI 53562-0330

TEL (608) 836-7041  
FAX (608) 831-6266

**CROWNE PLAZA HOTEL**  
2205 RIMROCK ROAD  
MADISON, WISCONSIN 53713

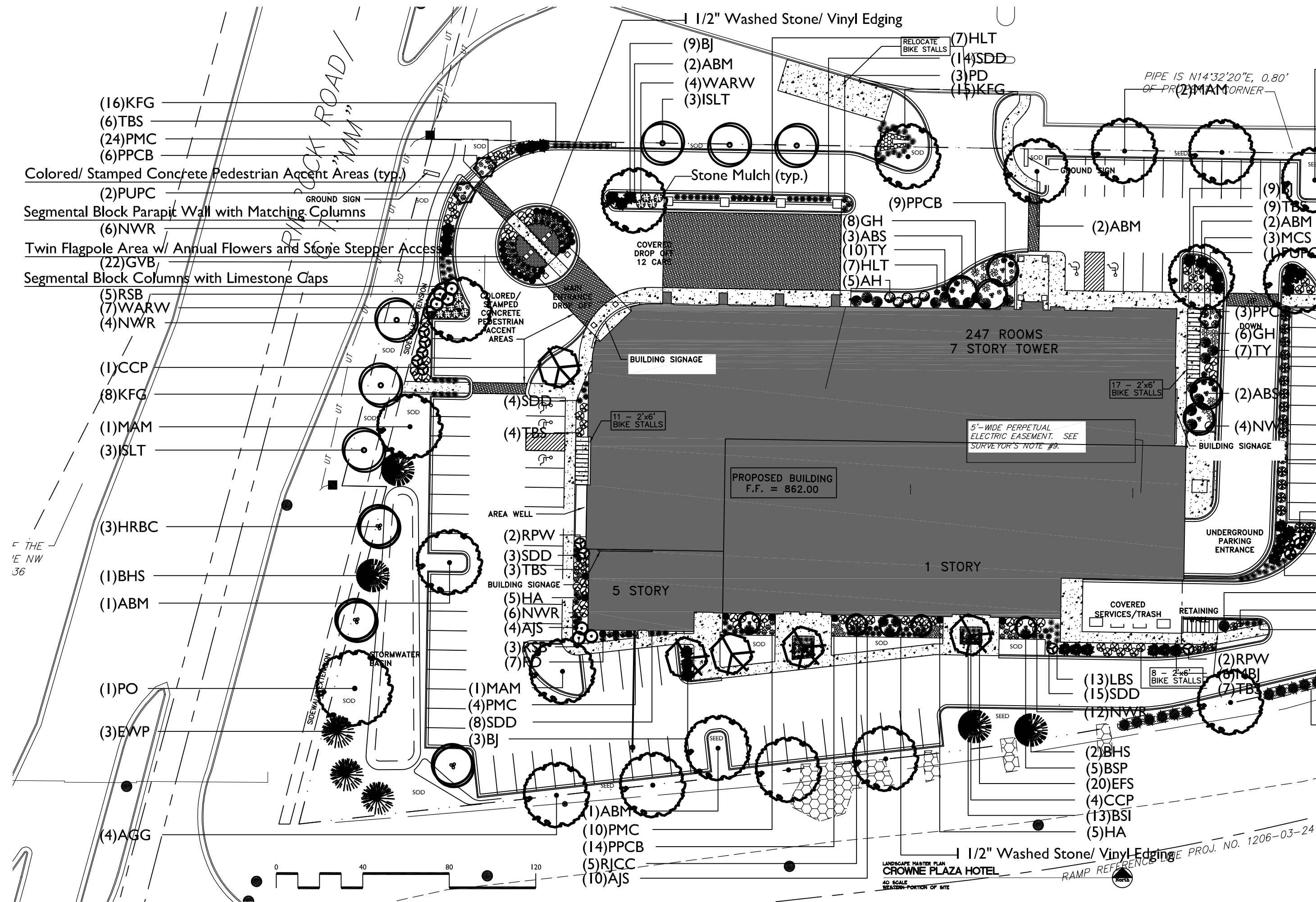
Checked By: SFS  
Drawn By: CPP

Revised:  
Revised:  
Revised:  
Revised:  
Revised:  
Revised:

Job #

## L1.0

This plan made exclusively for the party named in the title block. It remains the property of **The Bruce Company of Wisconsin, Inc.** and may not be reproduced or implemented in whole or part by any method without prior written consent of **The Bruce Company of Wisconsin, Inc.**





LANDSCAPE ARCHITECTS  
LANDSCAPE CONTRACTORS

2830 PARMENTER STREET  
P.O. BOX 620330  
MIDDLETON, WI 53562-0330  
TEL (608) 836-7041  
FAX (608) 831-6266

CROWNE PLAZA HOTEL

2205 KIMROCK ROAD  
MADISON, WISCONSIN 53713

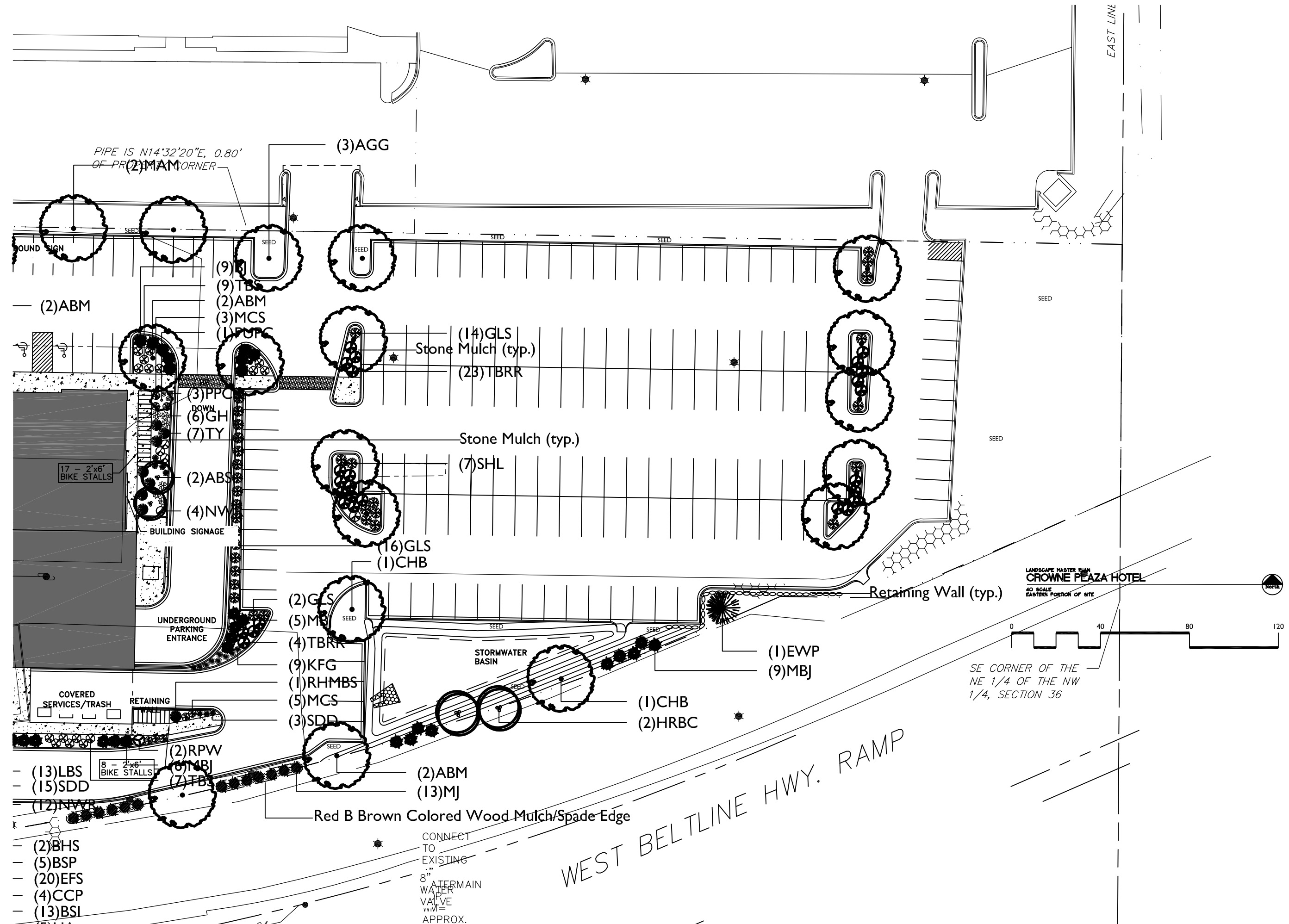
Checked By: SFS  
Drawn By: CPP

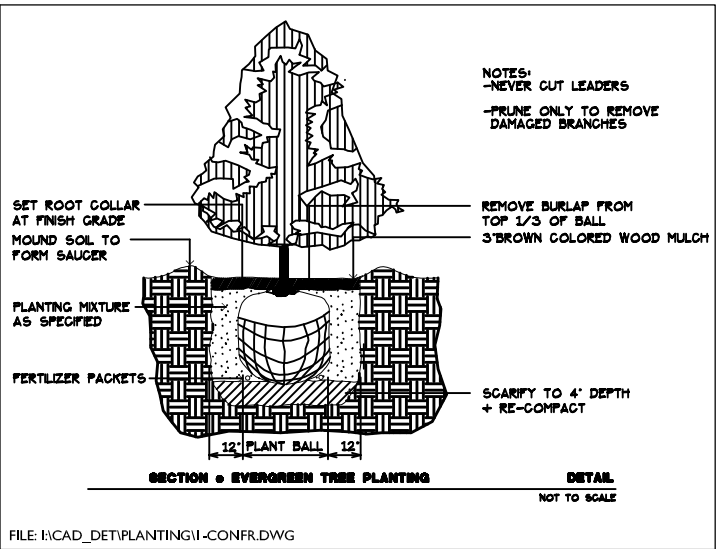
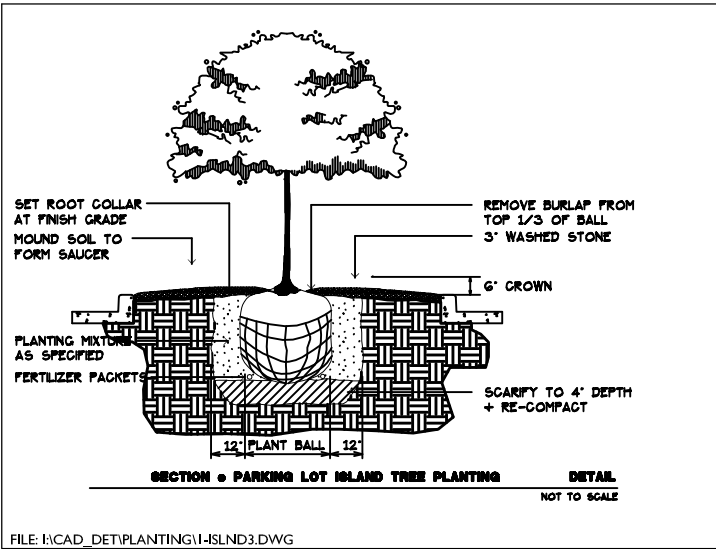
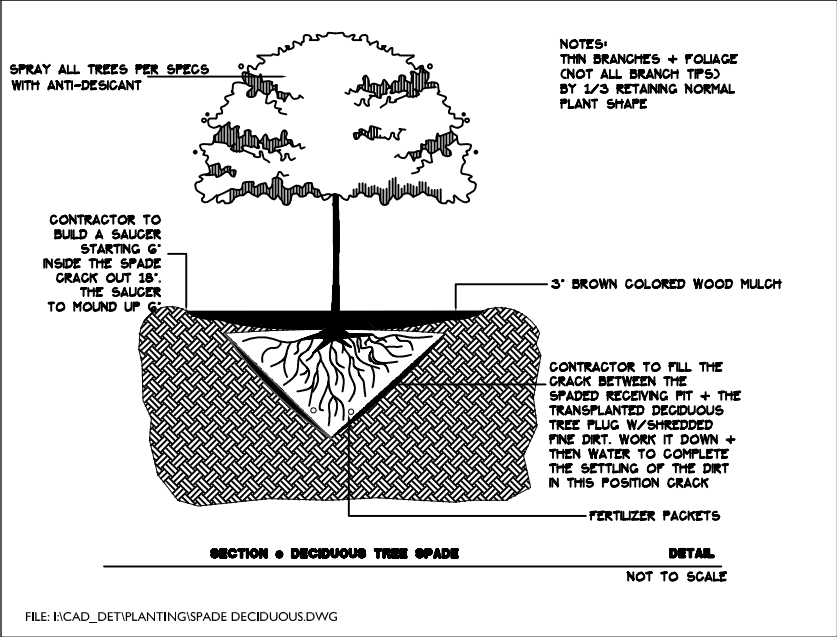
Revised:  
Revised:  
Revised:  
Revised:  
Revised:

Job #

**L1.2**

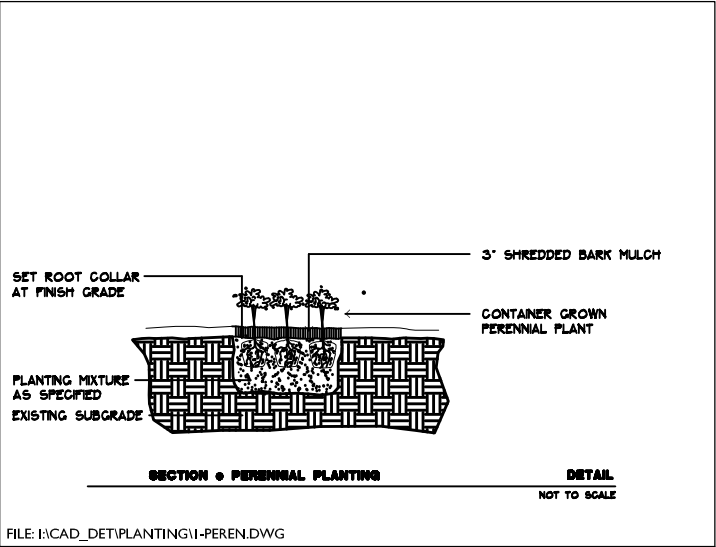
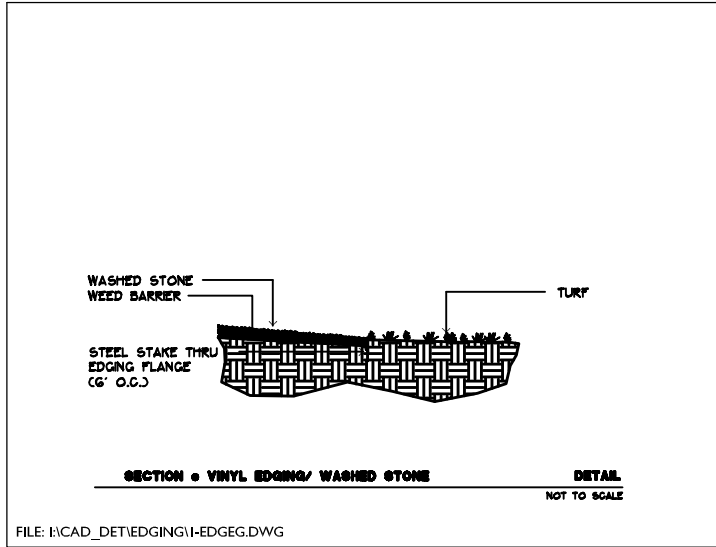
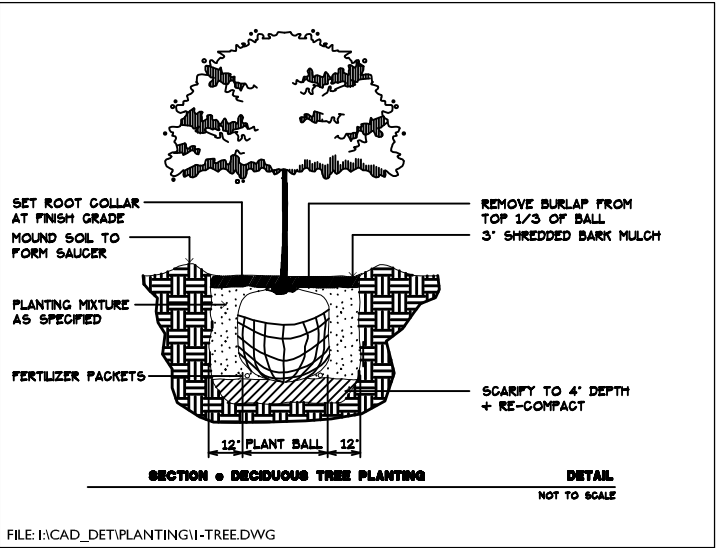
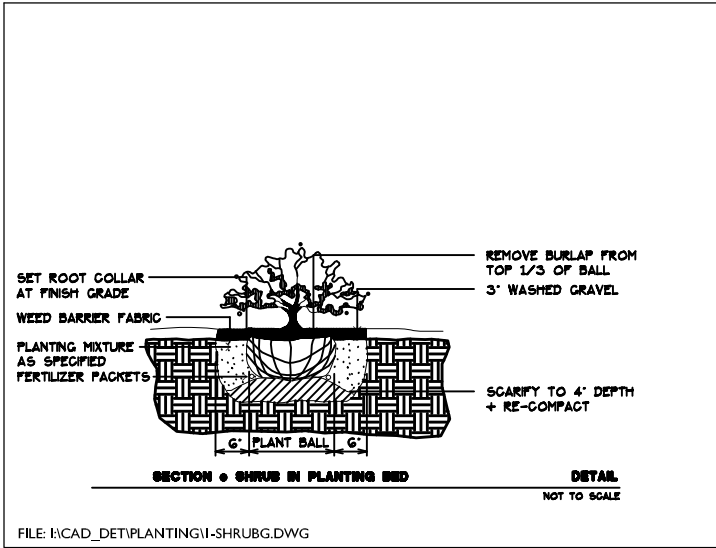
This plan made exclusively for the party named in the title block. It remains the property of The Bruce Company of Wisconsin, Inc. and may not be reproduced or implemented in whole or part by any method without prior written consent of The Bruce Company of Wisconsin, Inc.





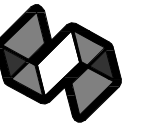
BIO-RETENTION BASIN PLANTING SCHEDULE					
Common Name	Scientific Name	Planting Size	Estimated Bio-Retention Basin Quantity (based on 1647 SF) (1216 Plants)	Estimated Bio-Retention Basin Quantity (based on 1792 SF) (1312 Plants)	Spacing (based on 1.35 Plants per 1 SF with 15" Triangular spacing)
GRASSES AND SEDGES					
BOTTLEBRUSH SEDGE	CAREX HYSTERICINA	PLUG	64	96	15" O.C.
FOX SEDGE	CAREX VULPINODES	PLUG	64	96	15" O.C.
VIRGINIA WILD RYE	ELYMUS VIRGINICUS	PLUG	64	64	15" O.C.
SWITCH GRASS	PANICUM VIRGATUM	PLUG	64	64	15" O.C.
LITTLE BLUESTEM	SCHIZACHYRIUM SCOPARIUM	PLUG	96	64	15" O.C.
DARK-GREEN BULLRUSH	SCIRPUS ATROVIRENS	PLUG	64	64	15" O.C.
INDIAN GRASS	SORBASTRUM NUTANS	PLUG	64	64	15" O.C.
FORBS					
LAVENDER HYSSOP	AGASTACHE FOENICULUM	PLUG	32	32	15" O.C.
NEW ENGLAND ASTER	ASTER NOVAE-ANGLIAE	PLUG	32	32	15" O.C.
BLUE WILD INDIGO	BAPTISTA AUSTRALIS	PLUG	32	64	15" O.C.
PALE PURPLE CONEFLOWER	ECHINACEA PALLIDA	PLUG	32	32	15" O.C.
PURPLE CONEFLOWER	ECHINACEA PURPUREA	PLUG	32	32	15" O.C.
SPOTTED JOE PYE	EUPATORIUM MACULATUM	PLUG	32	32	15" O.C.
SNEEZEWEED	HELENIUM AUTUMNALE	PLUG	32	32	15" O.C.
FALSE SUNFLOWER	HELIOPSIS HELIANTHODIES	PLUG	32	32	15" O.C.
WILD IRIS	IRIS VIRGINIANA SHREVEI	PLUG	32	96	15" O.C.
MONKEY FLOWER	MIMULUS RINGENS	PLUG	32	32	15" O.C.
CARDINAL FLOWER	LOBELIA CARDINALIS	PLUG	32	32	15" O.C.
OBEDIENT PLANT	PHYSTOSTEGIA VIRGINIANA	PLUG	32	32	15" O.C.
BERGAMOT	MONARDA FISTULOSA	PLUG	32	64	15" O.C.
SMOOTH PENSTEMON	PENSTEMON DIGITALIS	PLUG	32	32	15" O.C.
YELLOW CORNFLOWER	RATIBIDA PINNATA	PLUG	32	32	15" O.C.
SWEET BLACK-EYED SUSAN	RUDBECKIA SUBTOMENTOSA	PLUG	64	32	15" O.C.
OHIO GOLDENROD	SOLIDAGO OHIOENSIS	PLUG	32	32	15" O.C.
RIDDELL'S GOLDENROD	SOLIDAGO RIDDELLII	PLUG	32	32	15" O.C.
STIFF GOLDENROD	SOLIDAGO RIGIDA	PLUG	32	32	15" O.C.
BLUE VERVAIN	VERBENA HASTATA	PLUG	64	32	15" O.C.
GOLDEN ALEXANDER	ZIZIA AUREA	PLUG	32	32	15" O.C.

NOTE: Plants To Be Arranged And Grouped By Height With The Tallest Varieties (generally grasses) Located Near The Center Of The Basin. The Smallest Varieties (generally sedges and some of the forbs) Located Near The Perimeter Of The Basin.

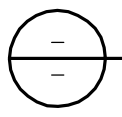
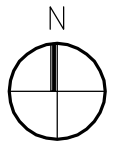
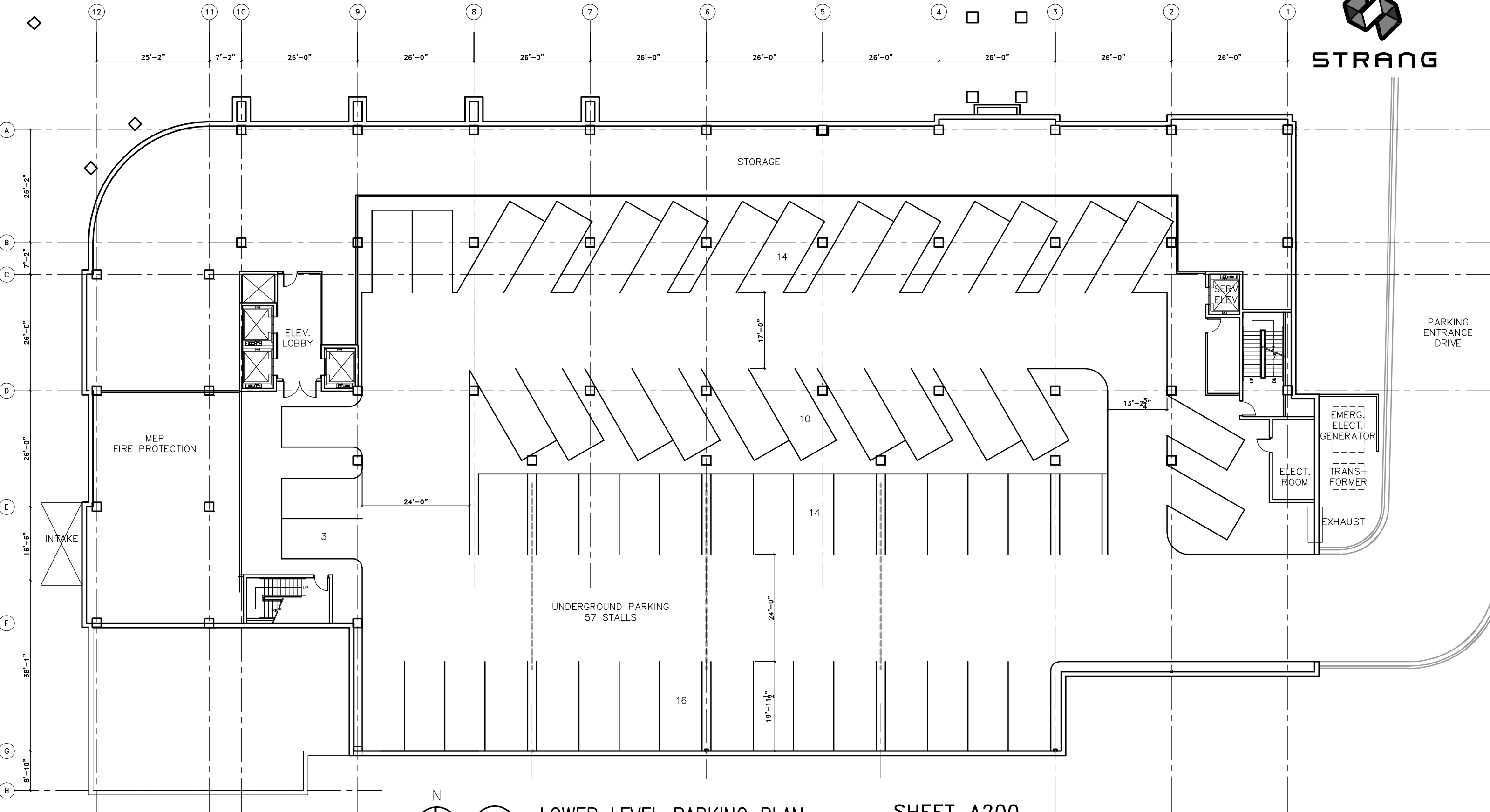


# LANDSCAPE AND INFILTRATION BASIN PLANTING DETAILS

NOT TO SCALE



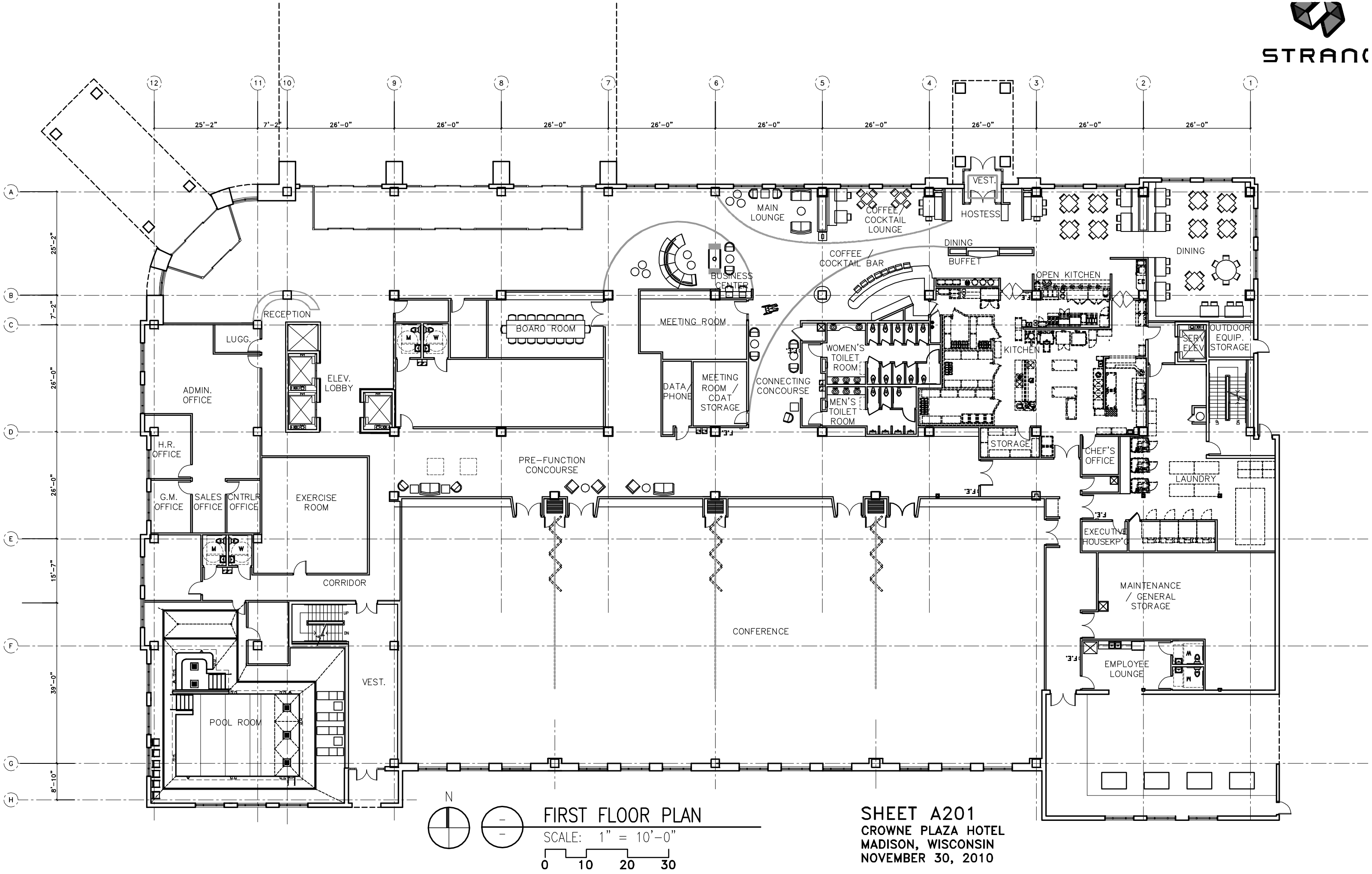
STRANG

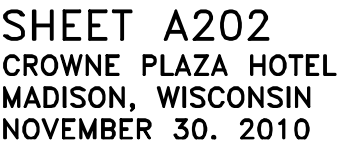


LOWER LEVEL PARKING PLAN

SCALE: 1" = 10'-0"

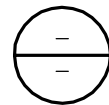
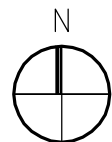
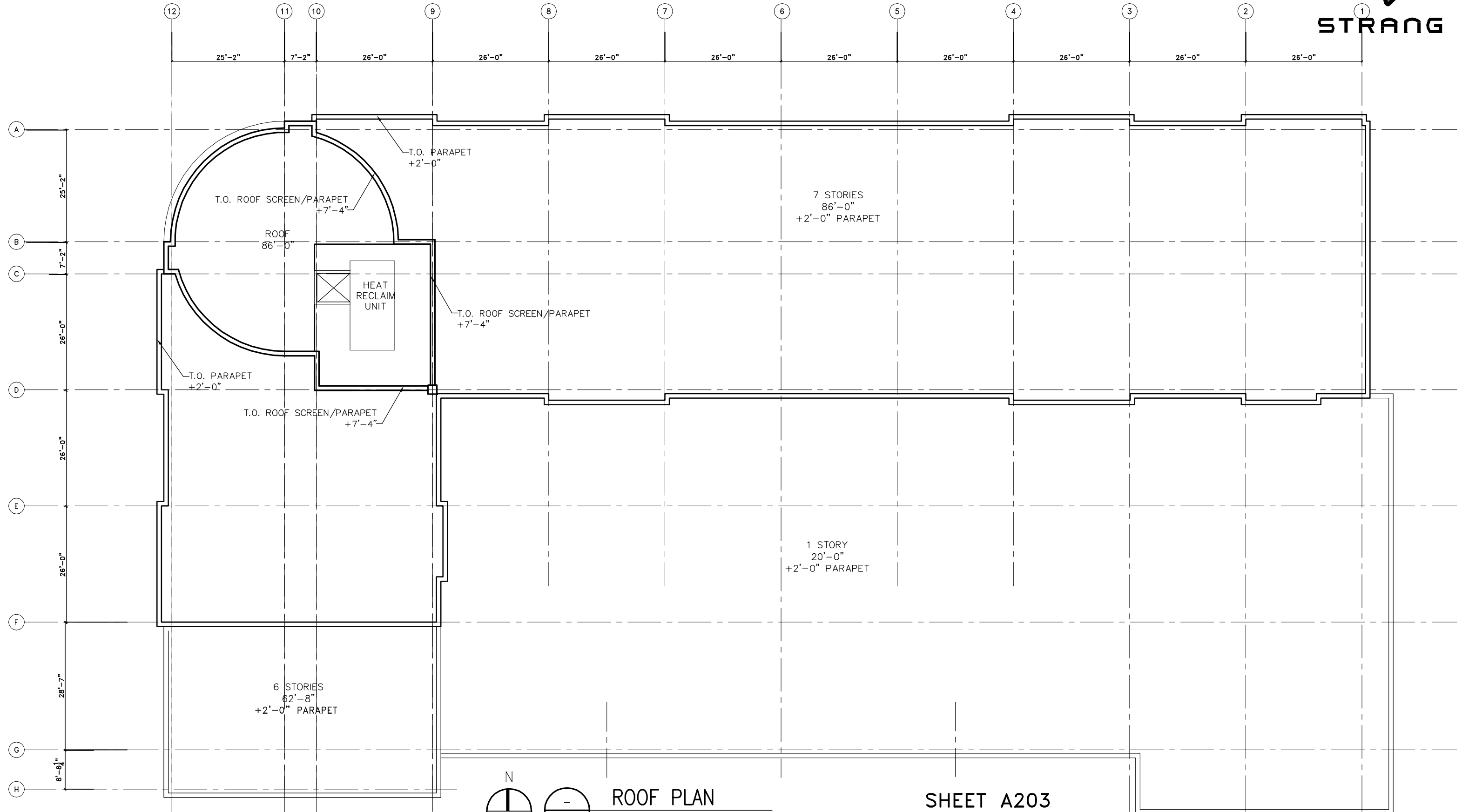
SHEET A200  
CROWNE PLAZA HOTEL  
MADISON, WISCONSIN  
NOVEMBER 30, 2010







STRANG



ROOF PLAN

SCALE: 1"=10'-0"

0 10 20 30

SHEET A203  
CROWNE PLAZA HOTEL  
MADISON, WISCONSIN  
NOVEMBER 30, 2010



② WEST ELEVATION  
1/32" = 1'-0"



① NORTH ELEVATION  
1/32" = 1'-0"



STRANG

GATEWAY PROJECT LLC HOTEL

WEST AND NORTH ELEVATIONS

STRANG INC COPYRIGHT 2010

NOVEMBER 22, 2010

A401



1 EAST ELEVATION  
1/32" = 1'-0"



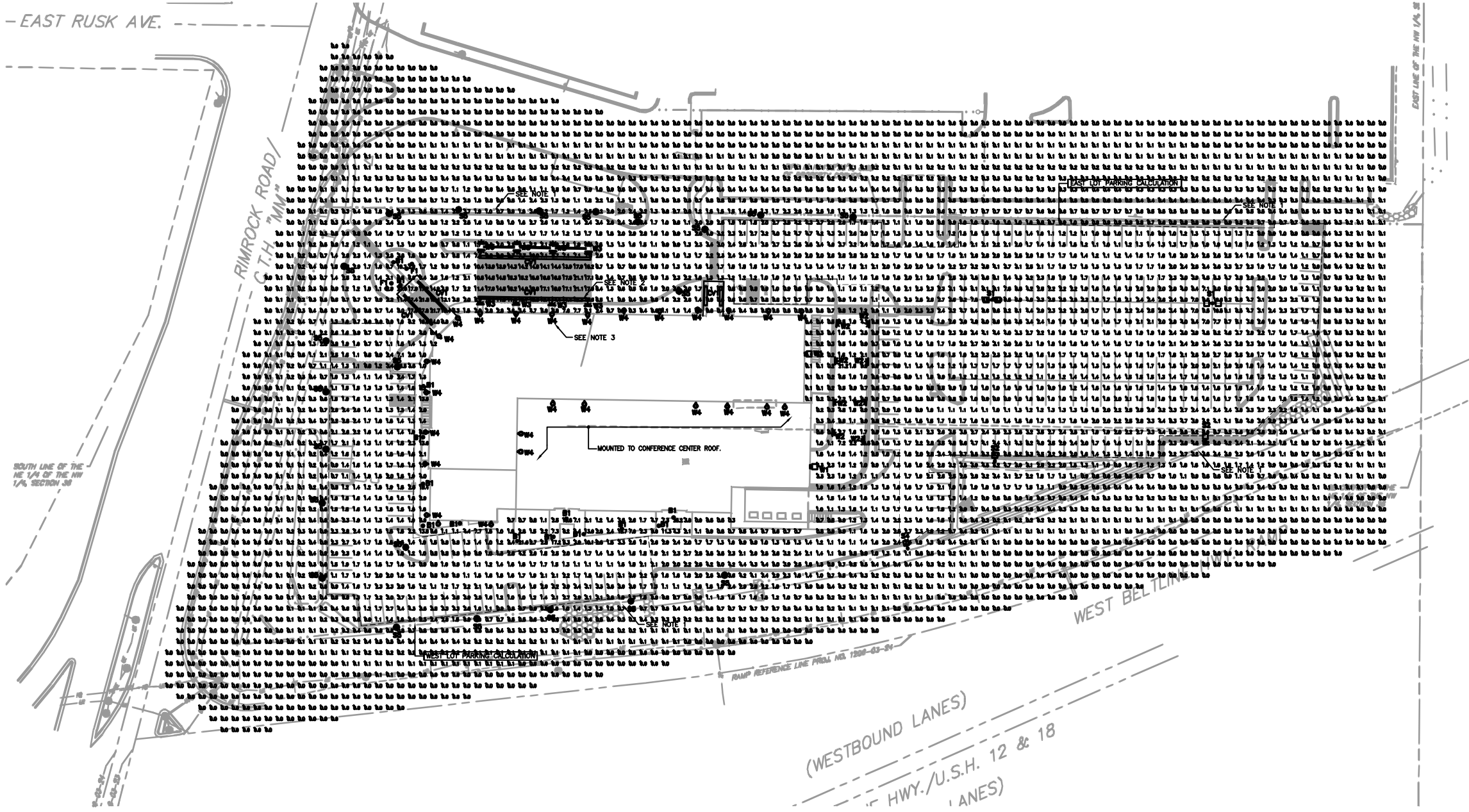
2 SOUTH ELEVATION  
1/32" = 1'-0"

ARCHITECTURE  
ENGINEERING  
INTERIOR DESIGN



GATEWAY PROJECT LLC HOTEL  
EAST AND SOUTH ELEVATIONS  
STRANG INC COPYRIGHT 2010  
NOVEMBER 22, 2010

A402



1 SITE LIGHTING PHOTOMETRIC PLAN  
E001 SCALE: 1"=40'-0"

City of Madison Calculation Summary								
Label	CalcType	Units	Avg	Max	Min	Avg/Min	Max/Min	Max/Avg
East Lot Parking	Illuminance	Fc	2.27	10.8	0.6	3.78	18.00	4.76
West Lot Parking	Illuminance	Fc	1.72	4.4	0.6	2.87	7.33	2.56

HORIZONTAL ILLUMINANCES FOR PARKING FACILITIES:  
ACTIVITY LEVEL: MEDIUM, OPEN PARKING

**SITE LIGHTING PLAN NOTES:**  
1. ILLUMINATION LEVELS EXCEED 0.5FC AT PROPERTY LINE. PROPERTY LINE IS ADJACENT TO PUBLIC RIGHT-OF-WAY IN A NON-RESIDENTIAL AREA.  
2. TYPE CV, COVE FIXTURE, IS MOUNTED BELOW CANOPY AND INDIRECTLY ILLUMINATES THE SURFACE BELOW.  
3. TYPE W4, ACCENT FIXTURE, IS MOUNTED TO BUILDING AND INDIRECTLY ILLUMINATES BUILDING FACADE.

**LIGHT FIXTURE DESIGNATIONS: REFERENCE PRODUCT SUBMITTAL SHEETS.**  
TYPE S1 - DUAL HEAD 400W PSMH, TYPE 4 DISTRIBUTION, 25 FOOT POLE MOUNTING HEIGHT.  
TYPE S2 - SINGLE HEAD 400W PSMH, TYPE 2 DISTRIBUTION, 25 FOOT POLE MOUNTING HEIGHT, HOUSE-SIDE SHIELD  
TYPE S4 - SINGLE HEAD 250W PSMH, TYPE 2 DISTRIBUTION, 20 FOOT POLE MOUNTING HEIGHT, HOUSE-SIDE SHIELD  
TYPE S5 - SINGLE HEAD 150W PSMH, TYPE 5 DISTRIBUTION, 18 FOOT POLE MOUNTING HEIGHT, HOUSE-SIDE SHIELD

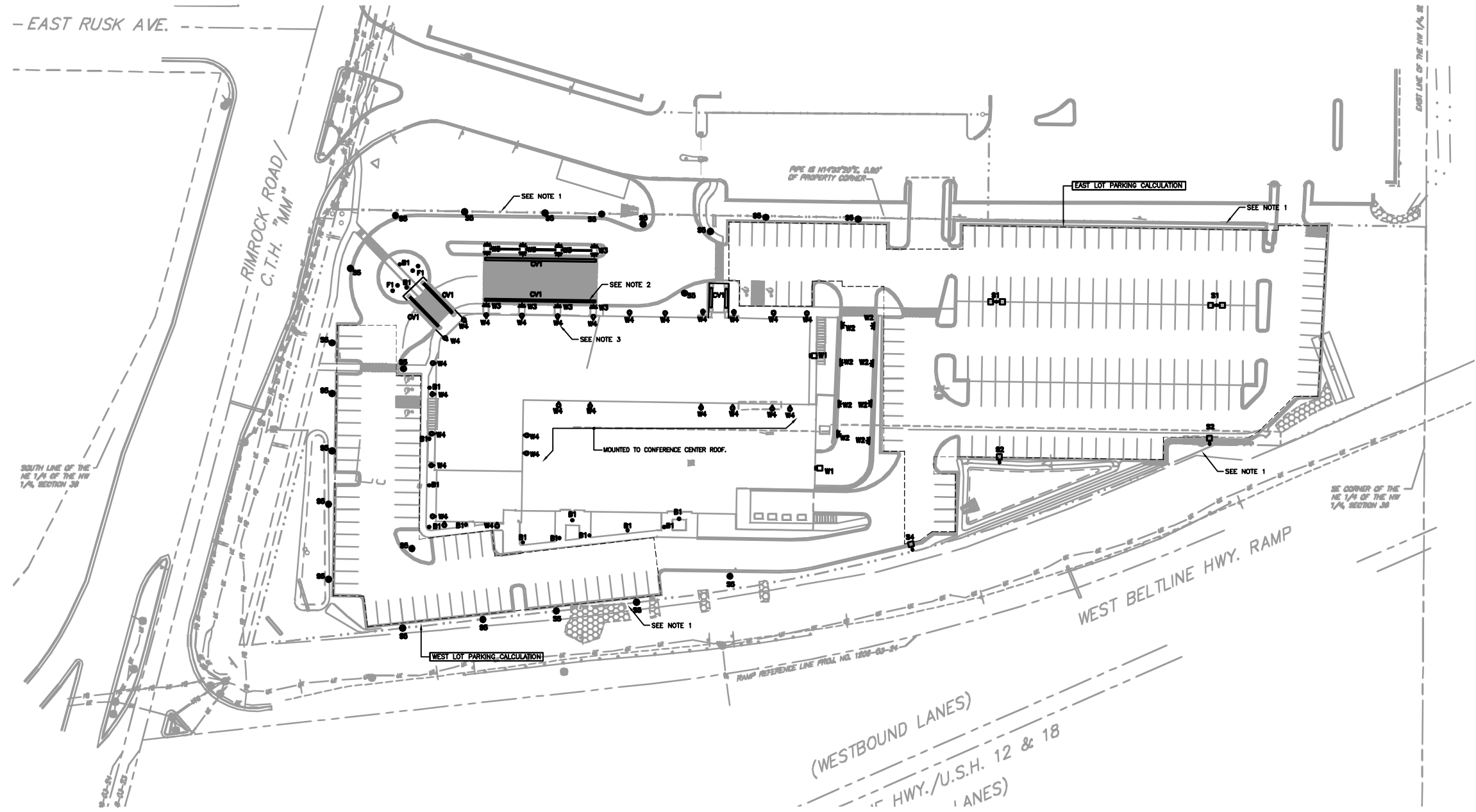
TYPE B1 - 70W PSMH, BOLLARD, 40" MOUNTING HEIGHT

TYPE W1 - SINGLE HEAD 70W PSMH, TYPE 4 DISTRIBUTION, MOUNTED ABOVE DOOR.  
TYPE W2 - RECESSED WALL LIGHT, 70W CMH, MOUNTED 30" ABOVE GRADE.  
TYPE W3 - DECORATIVE WALL SCONCE, 70W CMH, MOUNTED 96" ABOVE GRADE.  
TYPE W4 - INDIRECT BUILDING ACCENT, 150W CMH, MOUNTING HEIGHT VARIES.

TYPE CV1 - INDIRECT CANOPY LIGHTING, F54W TSHO

TYPE F1 - FLAGPOLE LIGHT, 70W CMH, RECESSED IN GRADE.





1 SITE LIGHTING PLAN  
E002  
SCALE: 1"=40'-0"

City of Madison Calculation Summary								
Label	CalcType	Units	Avg	Max	Min	Avg/Min	Max/Min	Max/Avg
East Lot Parking	Illuminance	Fc	2.27	10.8	0.6	3.78	18.00	4.76
West Lot Parking	Illuminance	Fc	1.72	4.4	0.6	2.87	7.33	2.56

HORIZONTAL ILLUMINANCES FOR PARKING FACILITIES:  
ACTIVITY LEVEL: MEDIUM, OPEN PARKING

SITE LIGHTING PLAN NOTES:  
1. ILLUMINATION LEVELS EXCEED 0.5FC AT PROPERTY LINE. PROPERTY LINE IS ADJACENT TO PUBLIC RIGHT-OF-WAY IN A NON-RESIDENTIAL AREA.  
2. TYPE CV, COVE FIXTURE, IS MOUNTED BELOW CANOPY AND INDIRECTLY ILLUMINATES THE SURFACE BELOW.  
3. TYPE W4, ACCENT FIXTURE, IS MOUNTED TO BUILDING AND INDIRECTLY ILLUMINATES BUILDING FACADE.

LIGHT FIXTURE DESIGNATIONS: REFERENCE PRODUCT SUBMITTAL SHEETS.  
TYPE S1 - DUAL HEAD 400W PSMH, TYPE 4 DISTRIBUTION, 25 FOOT POLE MOUNTING HEIGHT.  
TYPE S2 - SINGLE HEAD 400W PSMH, TYPE 2 DISTRIBUTION, 25 FOOT POLE MOUNTING HEIGHT, HOUSE-SIDE SHIELD  
TYPE S4 - SINGLE HEAD 250W PSMH, TYPE 2 DISTRIBUTION, 20 FOOT POLE MOUNTING HEIGHT, HOUSE-SIDE SHIELD  
TYPE S5 - SINGLE HEAD 150W PSMH, TYPE 5 DISTRIBUTION, 18 FOOT POLE MOUNTING HEIGHT, HOUSE-SIDE SHIELD  
TYPE B1 - 70W PSMH, BOLLARD, 40" MOUNTING HEIGHT  
TYPE W1 - SINGLE HEAD 70W PSMH, TYPE 4 DISTRIBUTION, MOUNTED ABOVE DOOR.  
TYPE W2 - RECESSED WALL LIGHT, 70W CMH, MOUNTED 30" ABOVE GRADE.  
TYPE W3 - DECORATIVE WALL SCIENCE, 70W CMH, MOUNTED 96" ABOVE GRADE.  
TYPE W4 - INDIRECT BUILDING ACCENT, 150W CMH, MOUNTING HEIGHT VARIES.  
TYPE CV1 - INDIRECT CANOPY LIGHTING, F54W TSHO  
TYPE F1 - FLAGPOLE LIGHT, 70W CMH, RECESSED IN GRADE.

