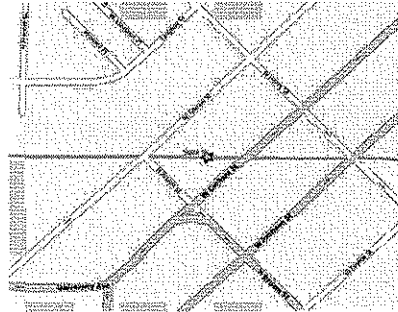


Elizabeth Link Peace Park Redevelopment

229 W. Gilman
Madison, WI

Plan Commission Submittal

LOCATION



OWNER

City of Madison, WI
City-County Building
210 Martin Luther King, Jr. Blvd.
Madison, WI 53703

ARCHITECT

Carter Arndt, AIA
carndt@mas-ps.com
MSA Professional Services
1230 South Boulevard, Baraboo, WI 53913
Phone: 608.355.8884 Fax: 608.356.2770

CIVIL ENGINEER

Jason DiPiazza, P.E.
jdipiazza@msa-ps.com
MSA Professional Services, Inc.
2901 International Lane, Suite 300
Madison, WI 53704-3133
Phone (direct): 608-242-6640
FAX: 608-242-5664

PROJECT MANAGER/LANDSCAPE ARCHITECT

Michael Sturm, ASLA, LEED AP
msturm@ksd-fa.com
Ken Saiki Design, Inc.
303 S. Paterson Suite One
608.261.3600 Fax: 608.251.2330

MECHANICAL ENGINEER

Michael Emmert
emmertm@kjww.com
KJWW Engineering Consultants
802 West Broadway, Suite 312 | Madison, Wisconsin 53713
608.223.9600 | Direct: 608.221.6740 | Fax: 608.223.9601

LIGHTING DESIGNER

Ingrid McMasters, LC, IESNA
mcmastersif@kjww.com
KJWW Engineering Consultants
802 West Broadway, Suite 312 | Madison, Wisconsin 53713
608.223.9600 | Direct: 608.221.6708 | Fax: 608.223.9601

ELECTRICAL ENGINEER

Tim Paap
paaptr@kjww.com
KJWW Engineering Consultants
802 West Broadway, Suite 312 | Madison, Wisconsin 53713
608.223.9600 | Direct: 608.221.6736 | Fax: 608.223.9601

SHEET INDEX

Sheet No.	Sheet Title	Sheet No.	Sheet Title	Sheet No.	Sheet Title
C100	Site Survey	A100	Floor Plan	E201	Electrical Schedules and Material List
C200	Erosion Control Plan	A200	Exterior Elevations	E301	Electrical Notes and Details
C300	Site Demolition Plan	A300	Perspectives		
C400	Site Grading Plan			Q100	Site - Technology
C500	Site Layout Plan	M101	Mechanical Plans	Q101	Technology Plans
C600	Site Details	M201	Mechanical Schedules		
C601	Site Details			L100	Planting Plan
C602	Site Details	P101	Plumbing Plans		
C700	Storm Sewer	P201	Plumbing Material List	S100	Logo and Banner Concepts
C701	Storm Sewer Profiles and Schedules			S101	Exterior Signage Concepts
C702	Storm Sewer Details	E100	Site Electrical Plans		
C703	Storm Sewer Details	E101	Electrical Plans	EL100	Site Photometric Plan
C704	Storm Sewer Details				

Date: 07/15/09

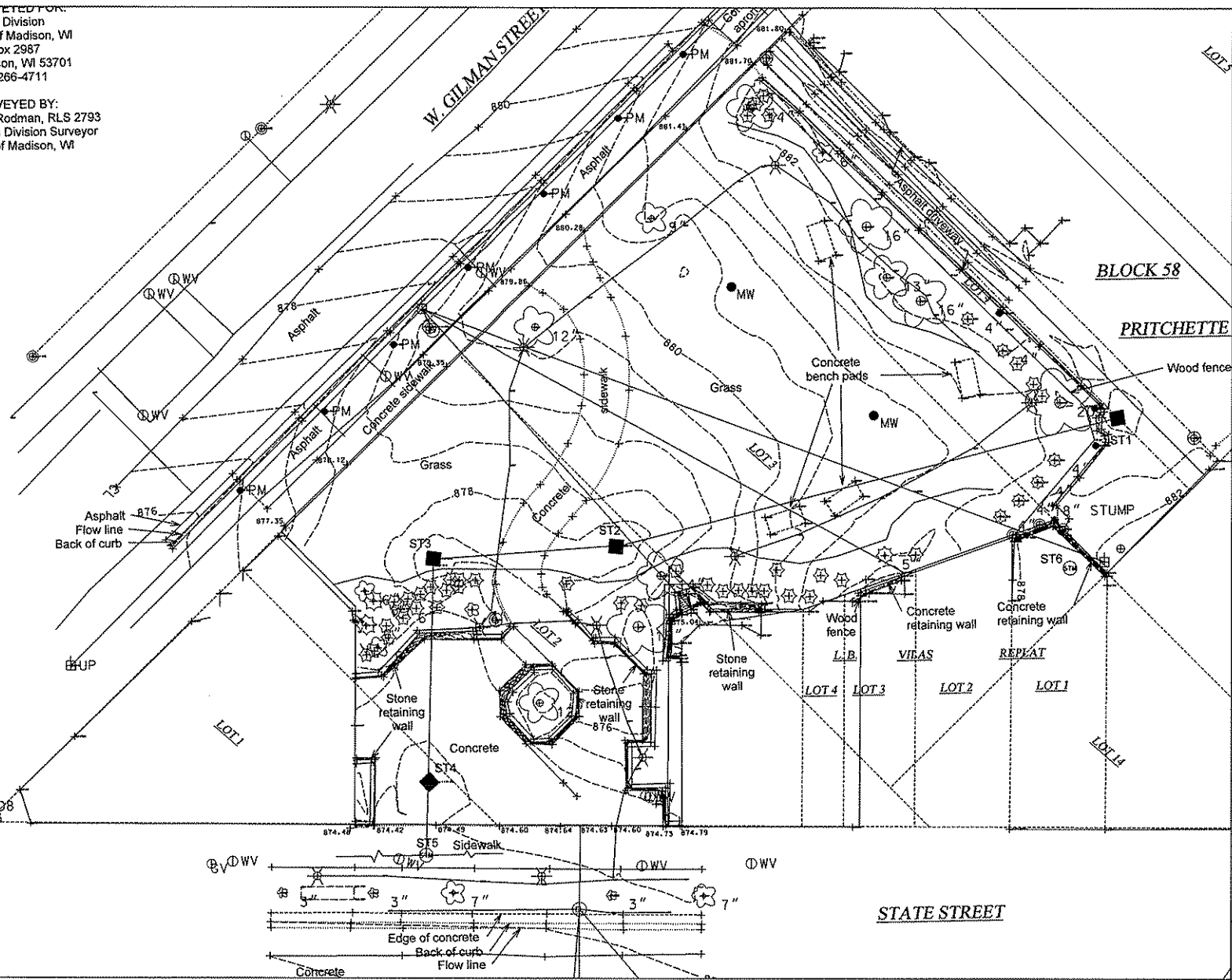
SURVEYED FOR:
 Parks Division
 City of Madison, WI
 PO Box 2987
 Madison, WI 53701
 (608)266-4711

SURVEYED BY:
 Dan Rodman, RLS 2793
 Parks Division Surveyor
 City of Madison, WI

TYPE

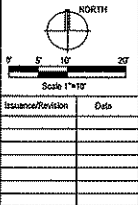
ev (ft)

73.29



Consultants

Elizabeth Link Peace Park Redevelopment
 229 W. Gilman Street, Madison, WI



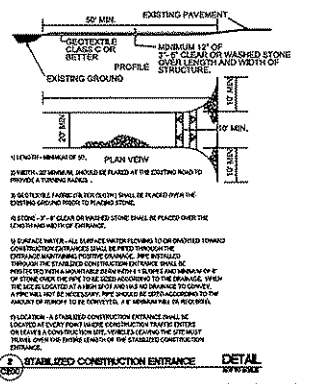
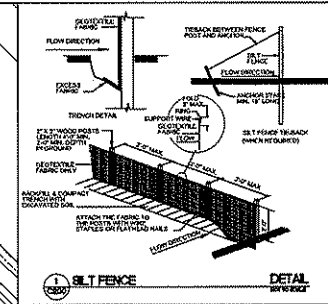
Issuance/Revision	Date

Project No. 0340
 Drawn By: MRS
 Checked By: MRS
 Date: 07-15-09
 Sheet Title: SITE SURVEY

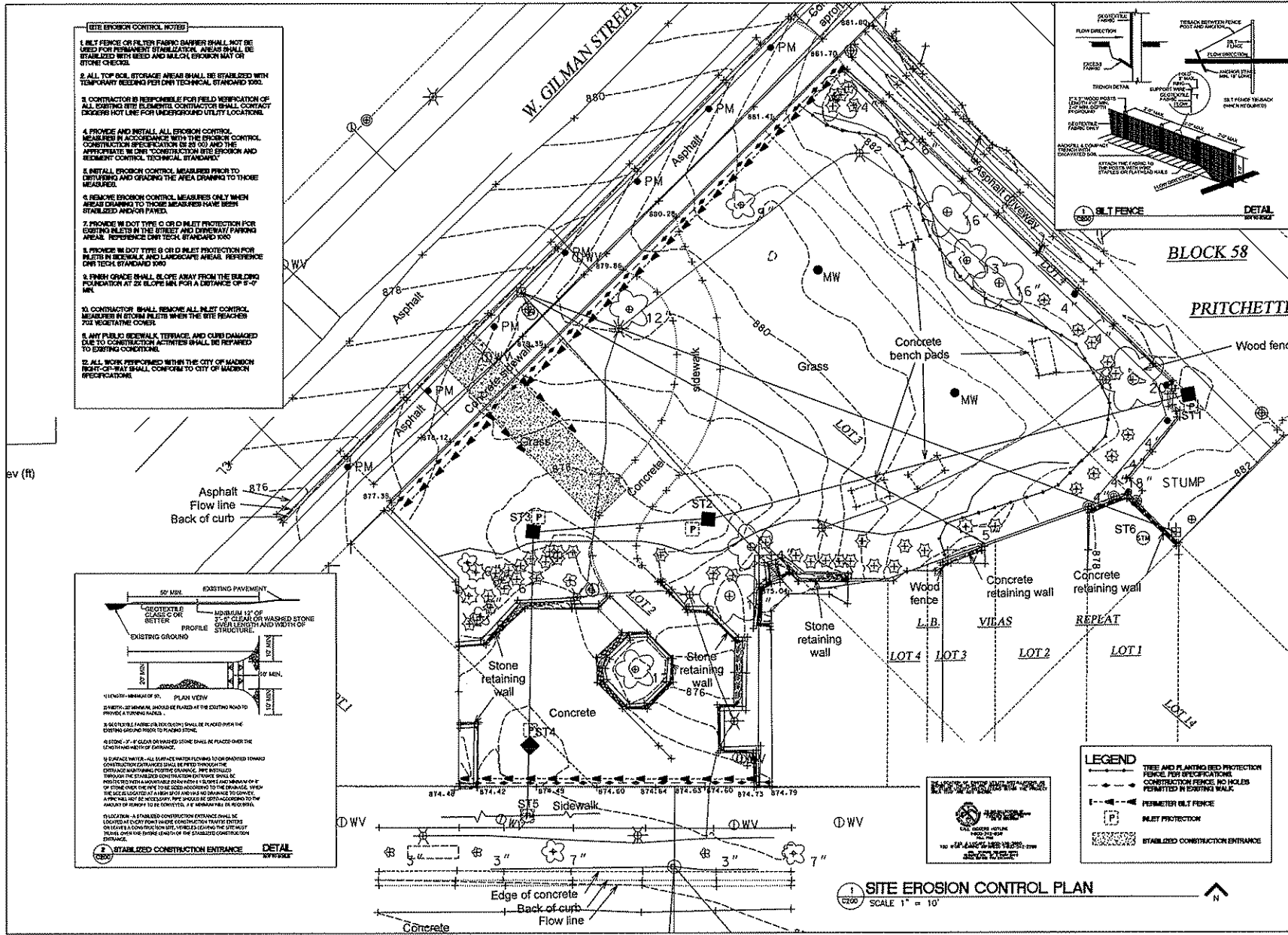
Sheet No. C100

[SITE EROSION CONTROL NOTES]

1. SILT FENCE OR OTHER FABRIC BARRIER SHALL NOT BE USED FOR PERMANENT STABILIZATION. AREAS SHALL BE STABILIZED WITH SEED AND MULCH. EROSION MAT OR STONE CHECKS.
2. ALL TOP SOIL STORAGE AREAS SHALL BE STABILIZED WITH TEMPORARY SEEDING PER DNR TECHNICAL STANDARD 1000.
3. CONTRACTOR IS RESPONSIBLE FOR FIELD VERIFICATION OF ALL EXISTING SITE EROSION CONTROL MEASURES. CONTACT DESIGNER FOR UNDERGROUND UTILITY LOCATIONS.
4. PROVIDE AND INSTALL ALL EROSION CONTROL MEASURES IN ACCORDANCE WITH THE EROSION CONTROL CONSTRUCTION SPECIFICATION 02 40 00 AND THE APPROPRIATE "MUNICIPAL" CONSTRUCTION SITE EROSION AND SEDIMENT CONTROL TECHNICAL STANDARDS.
5. INSTALL EROSION CONTROL MEASURES PRIOR TO DISTURBING AND GRADING THE AREA DRAINING TO THOSE MEASURES.
6. REMOVE EROSION CONTROL MEASURES ONLY WHEN AREAS DRAINING TO THOSE MEASURES HAVE BEEN STABILIZED AND/OR PAVED.
7. PROVIDE W/DOT TYPE "C" OR "D" SILT PROTECTION FOR CUTTING INLETS IN THE STREET AND DRIVEWAY PAVING AREAS. REFERENCE DNR TECH. STANDARD 1000.
8. PROVIDE W/DOT TYPE "B" OR "D" SILT PROTECTION FOR INLETS IN SIDEWALK AND LANDSCAPE AREAS. REFERENCE DNR TECH. STANDARD 1000.
9. FINISH GRADE SHALL SLOPE AWAY FROM THE BUILDING FOUNDATION AT 2% SLOPE MIN. FOR A DISTANCE OF 8'-0" MIN.
10. CONTRACTOR SHALL REMOVE ALL SILT CONTROL MEASURES IN STORM INLETS WHEN THE SITE REACHES 70% VEGETATIVE COVER.
11. ANY PUBLIC SIDEWALK, TERRACE, AND CURB DAMAGED DUE TO CONSTRUCTION ACTIVITIES SHALL BE REPAIRED TO EXISTING CONDITIONS.
12. ALL WORK PERFORMED WITHIN THE CITY OF MADISON RIGHT-OF-WAY SHALL CONFORM TO CITY OF MADISON SPECIFICATIONS.

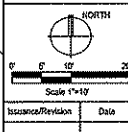


[STABILIZED CONSTRUCTION ENTRANCE]



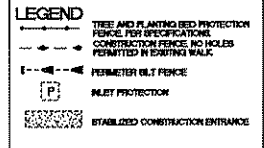
Consultants

Elizabeth Link Peace Park Redevelopment
229 W. Gilman Street, Madison, WI



Issuance/Revision	Date

Project No. 6160
 Drawn By: AS
 Checked By: MS
 Date: 01-15-20
 Sheet Title: EROSION CONTROL PLAN



1 SITE EROSION CONTROL PLAN
SCALE 1" = 10'

Sheet No.
C200

SURVEYED BY:
 Parks Division
 City of Madison, WI
 PO Box 2987
 Madison, WI 53701
 (608)266-4711

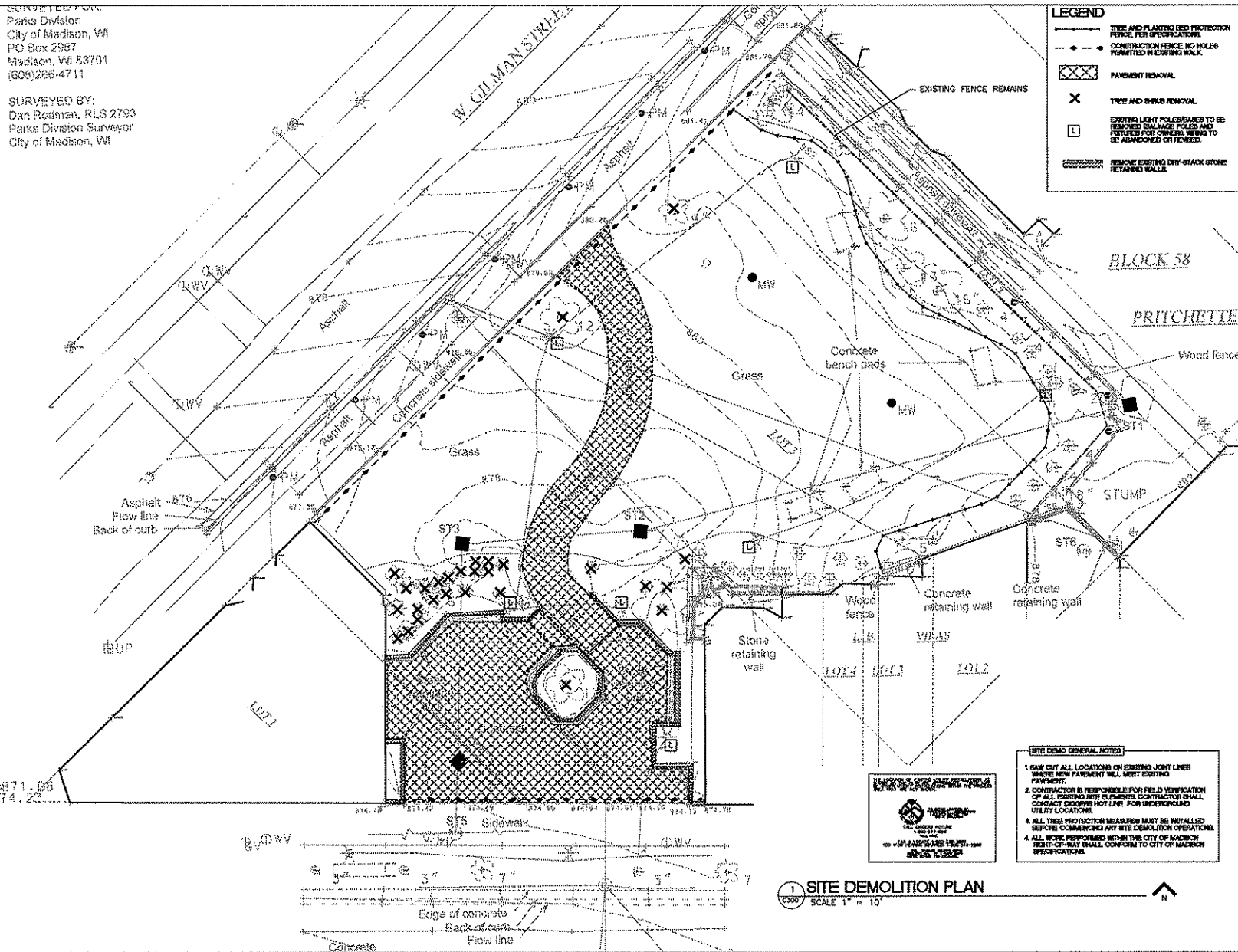
SURVEYED BY:
 Dan Rodman, RLS 2793
 Parks Division Surveyor
 City of Madison, WI

TYPE

sv (ft)

29

INV=871.06
 IC=874.22



LEGEND

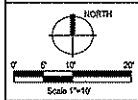
- TREE AND PLANTING BED PROTECTION FENCE PER SPECIFICATIONS.
- - - CONTRACTOR FENCE NO HOLES PERMITTED IN EXISTING WALK.
- XXXX PAVEMENT REMOVAL.
- X TREE AND SHrub REMOVAL.
- EXISTING LIGHT POLES/BASES TO BE REMOVED. DAMAGE POLES AND FITTINGS FOR CONCRETE WORKING TO BE APPROVED BY PERMITS.
- XXXXXXXXXXXX REMOVE EXISTING CITY-WHACK STONE RETAINING WALLS.



Contact:
 Project No. 6302
 Drawn By: SAC
 Checked By: MS
 Date: 07-15-09
 Sheet Title:

Elizabeth Link Peace Park Redevelopment

229 W. Gilman Street, Madison, WI



Issued/Revision	Date

Project No. 6302
 Drawn By: SAC
 Checked By: MS
 Date: 07-15-09
 Sheet Title:

- SITE DEMO GENERAL NOTES**
1. SAW CUT ALL LOCATIONS ON EXISTING LIGHT LINES WHERE NEW PAVEMENT WILL MEET EXISTING PAVEMENT.
 2. CONTRACTOR IS RESPONSIBLE FOR FIELD VERIFICATION OF ALL EXISTING SITE ELEMENTS. CONTRACTOR SHALL CONTACT DIGGERS HOT LINE FOR UNDERGROUND UTILITY LOCATIONS.
 3. ALL TREE PROTECTION MEASURES MUST BE INSTALLED BEFORE COMMENCING ANY SITE DEMOLITION OPERATIONS.
 4. ALL WORK PERFORMED WITHIN THE CITY OF MADISON RIGHT-OF-WAY SHALL CONFORM TO CITY OF MADISON SPECIFICATIONS.

1 SITE DEMOLITION PLAN
 C300 SCALE 1" = 10'

SITE DEMOLITION PLAN
 Sheet No. **C300**



Consultants

Elizabeth Link Peace Park Redevelopment

229 W. Gilman Street, Madison, WI



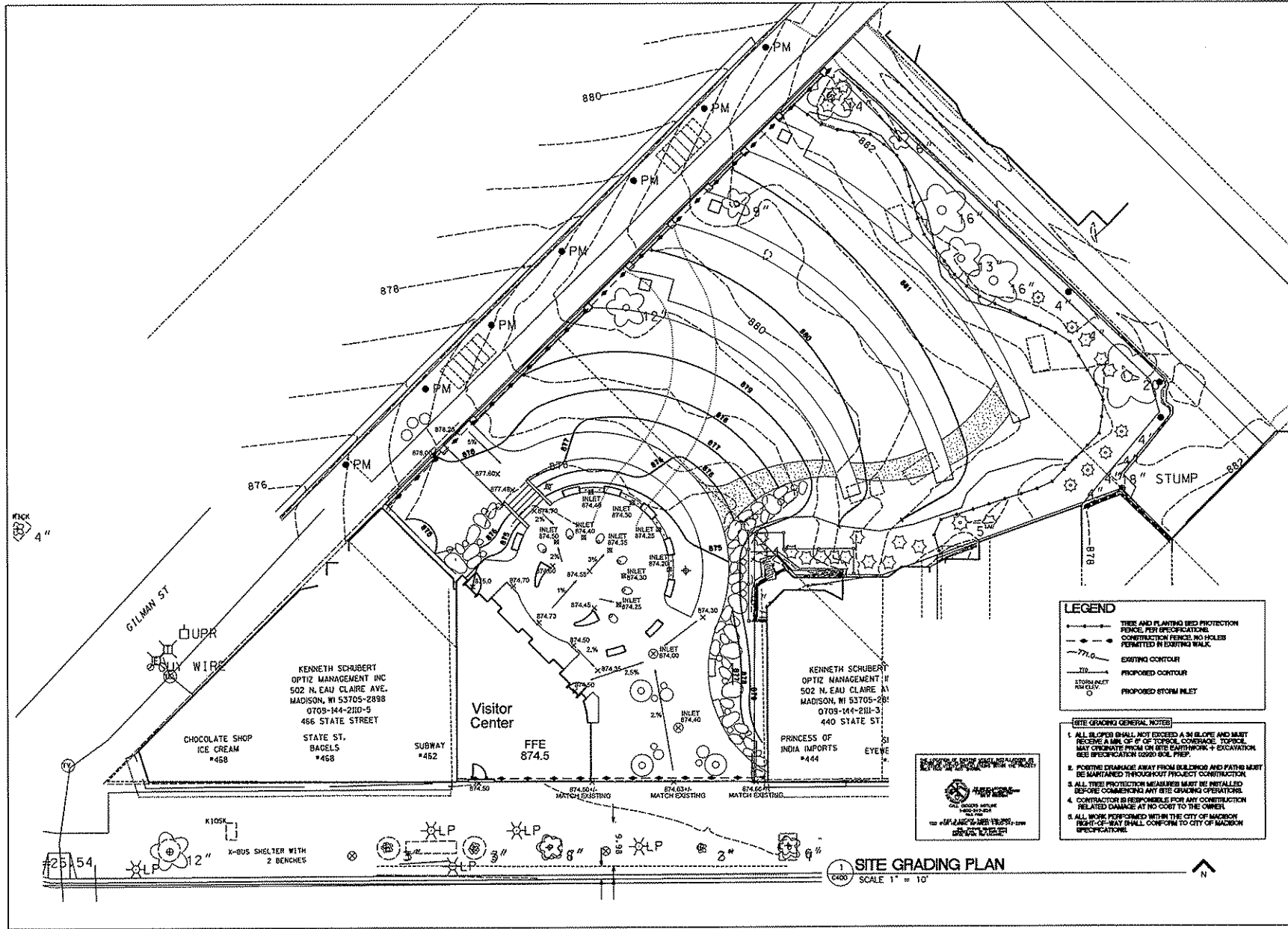
Scale 1" = 10'

Issuance/Revision	Date

Project No.	6340
Drawn By	MS
Checked By	MS
Date	07-15-09
Sheet Title	

SITE GRADING PLAN

Sheet No. C400



LEGEND

- TREE AND PLANTING BED PROTECTION FENCE PER SPECIFICATIONS
- - - CONSTRUCTION FENCE; NO HOLES PERMITTED IN EXISTING WALK
- - - EXISTING CONTOUR
- PROPOSED CONTOUR
- STORAGE/INLET
- PROPOSED STORM INLET

GENERAL NOTES

1. ALL SLOPES SHALL NOT EXCEED A 5% SLOPE AND MUST RECEIVE A MIN. OF 0" OF TOPSOIL COVERAGE. TOPSOIL MAY ORIGINATE FROM ON SITE EARTHWORK & EXCAVATION (SEE SPECIFICATION 20000 SOIL PREP)
2. POSITIVE DRAINAGE AWAY FROM BUILDINGS AND PATHS MUST BE MAINTAINED THROUGHOUT PROJECT CONSTRUCTION
3. ALL TREE PROTECTION MEASURES MUST BE INSTALLED BEFORE COMMENCING ANY SITE GRADING OPERATIONS
4. CONTRACTOR IS RESPONSIBLE FOR ANY CONSTRUCTION RELATED DAMAGE AT NO COST TO THE OWNER
5. ALL WORK PERFORMED WITHIN THE CITY OF MADISON RIGHT-OF-WAY SHALL CONFORM TO CITY OF MADISON SPECIFICATIONS



SITE GRADING PLAN
SCALE 1" = 10'



Consultants

Elizabeth Link Peace Park Redevelopment

229 W. Gilman Street, Madison, WI



Scale 1"=10'

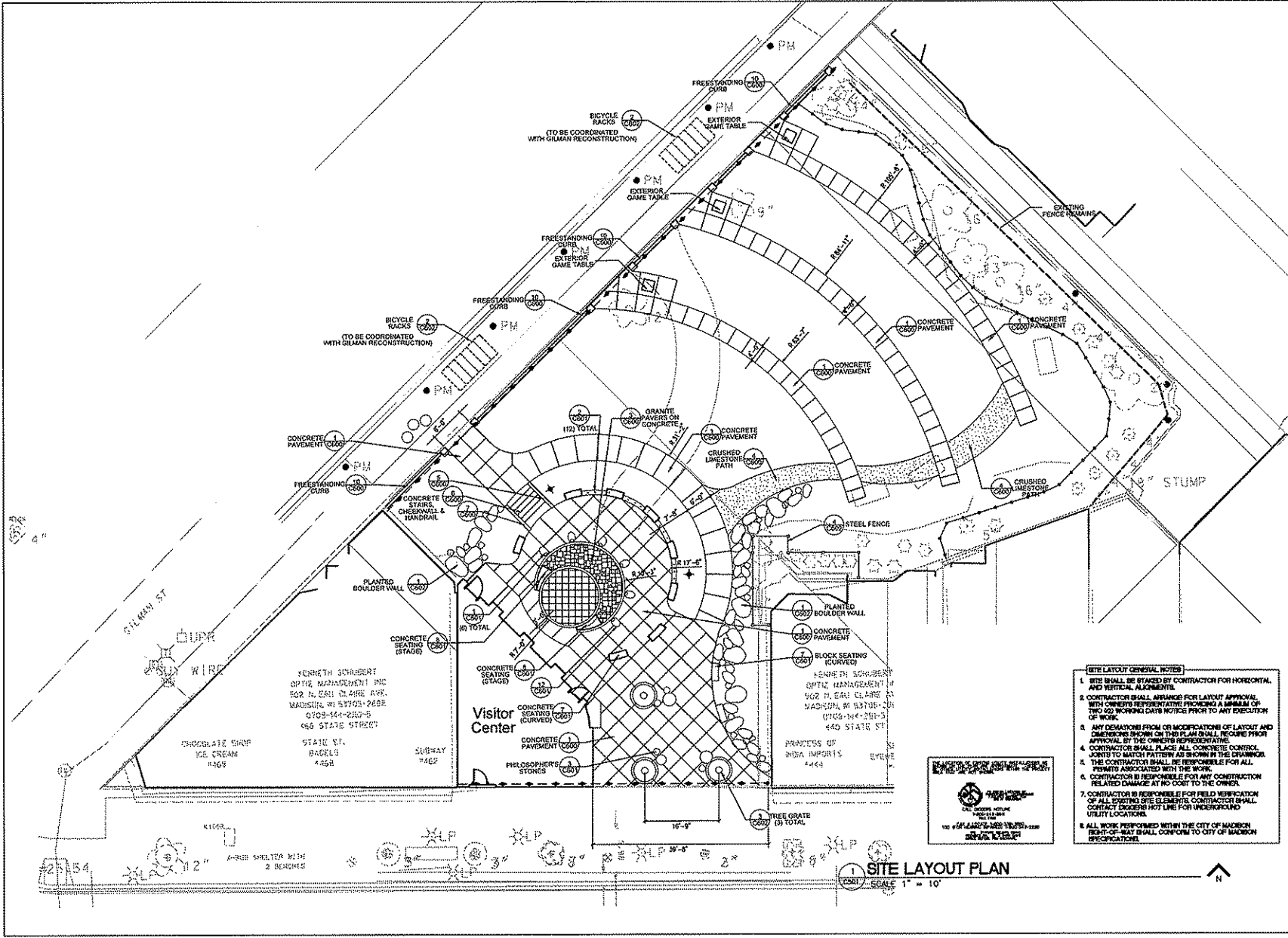
Issued/Revised	Date

Project No.	6540
Drawn By	MS
Checked By	MS
Date	07-12-09

Sheet Title

SITE LAYOUT PLAN

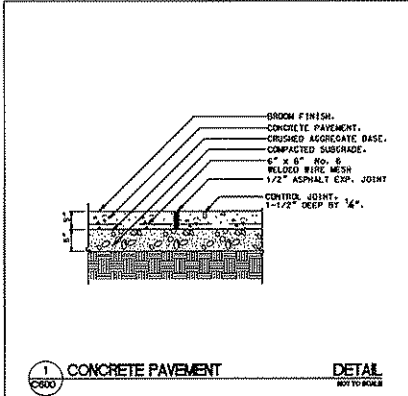
Sheet No. C500



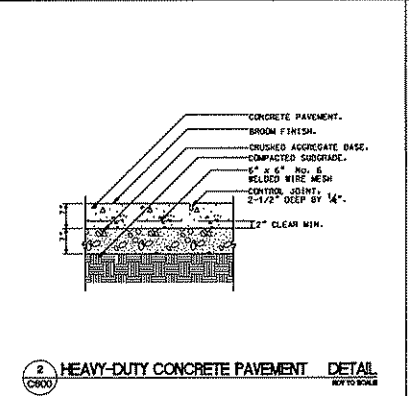
- SITE LAYOUT GENERAL NOTES**
1. SITE SHALL BE STAKED BY CONTRACTOR FOR HORIZONTAL AND VERTICAL ALIGNMENTS.
 2. CONTRACTOR SHALL ARRANGE FOR LAYOUT APPROVAL WITH OWNER'S REPRESENTATIVE PROVIDING A MINIMUM OF TWO (2) WORKING DAYS NOTICE PRIOR TO ANY EXECUTION OF WORK.
 3. ANY DEVIATIONS FROM OR MODIFICATIONS OF LAYOUT AND DIMENSIONS SHOWN ON THIS PLAN SHALL REQUIRE PRIOR APPROVAL BY THE OWNER'S REPRESENTATIVE.
 4. CONTRACTOR SHALL PLACE ALL CONCRETE CONTROL JOINTS TO MATCH PATTERNS AS SHOWN IN THE DRAWINGS.
 5. THE CONTRACTOR SHALL BE RESPONSIBLE FOR ALL PERMITS ASSOCIATED WITH THE WORK.
 6. CONTRACTOR IS RESPONSIBLE FOR ANY CONSTRUCTION RELATED DAMAGE AT NO COST TO THE OWNER.
 7. CONTRACTOR IS RESPONSIBLE FOR FIELD VERIFICATION OF ALL EXISTING UTILITY LOCATIONS. CONTRACTOR SHALL CONTACT UTILITY HOT LINE FOR UNDERGROUND UTILITY LOCATIONS.
 8. ALL WORK PERFORMED WITHIN THE CITY OF MADISON RIGHT-OF-WAY SHALL CONFORM TO CITY OF MADISON SPECIFICATIONS.



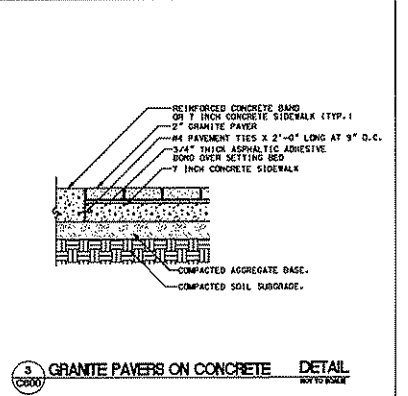
SITE LAYOUT PLAN
SCALE 1" = 10'



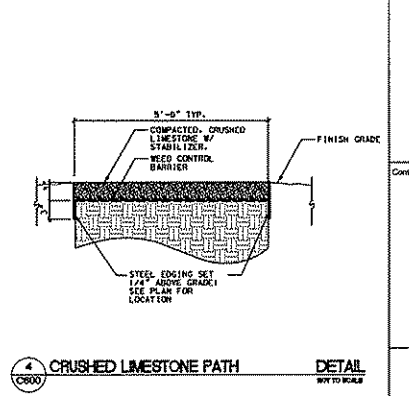
1 CONCRETE PAVEMENT DETAIL
NOT TO SCALE



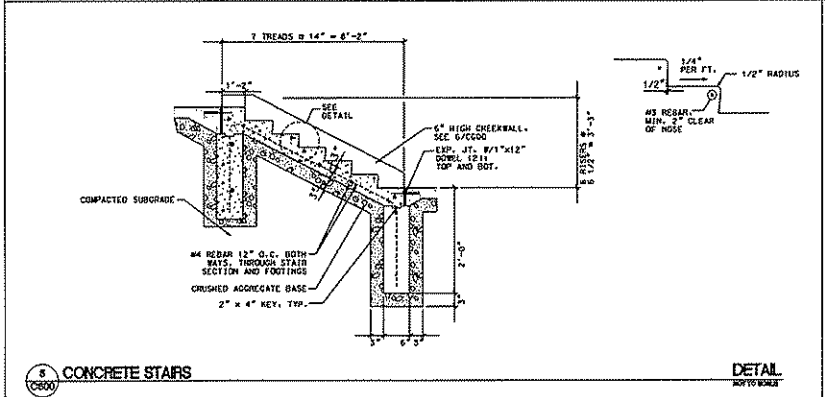
2 HEAVY-DUTY CONCRETE PAVEMENT DETAIL
NOT TO SCALE



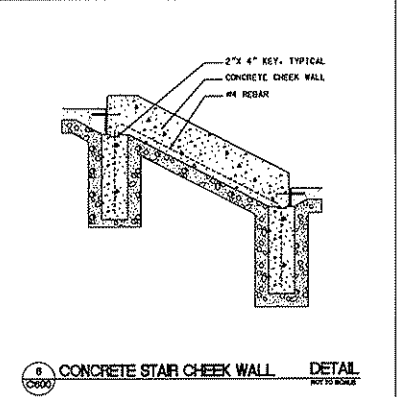
3 GRANITE PAVERS ON CONCRETE DETAIL
NOT TO SCALE



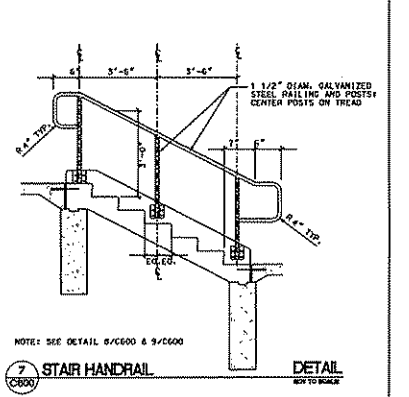
4 CRUSHED LIMESTONE PATH DETAIL
NOT TO SCALE



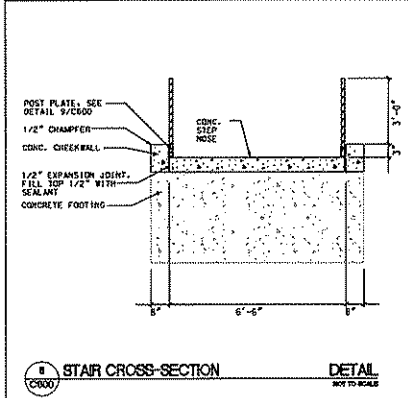
5 CONCRETE STAIRS DETAIL
NOT TO SCALE



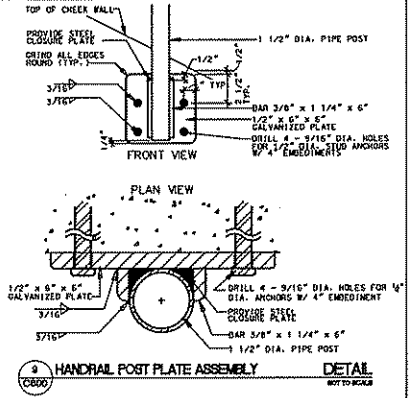
6 CONCRETE STAIR CHEEK WALL DETAIL
NOT TO SCALE



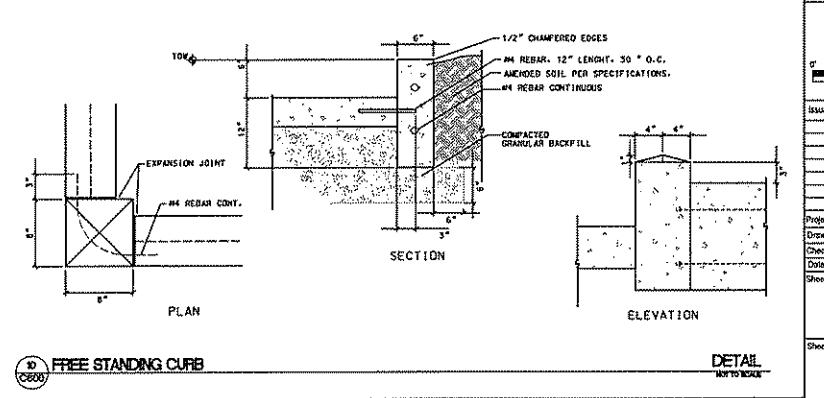
7 STAIR HANDRAIL DETAIL
NOT TO SCALE



8 STAIR CROSS-SECTION DETAIL
NOT TO SCALE



9 HANDRAIL POST PLATE ASSEMBLY DETAIL
NOT TO SCALE

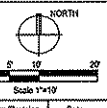


10 FREE STANDING CURB DETAIL
NOT TO SCALE



Consultant

Elizabeth Link Peace Park Redevelopment
229 W. Gilman Street, Madison, WI

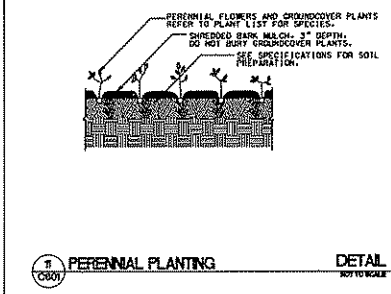
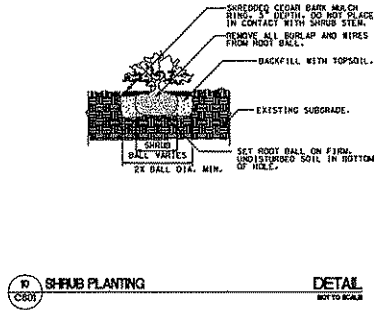
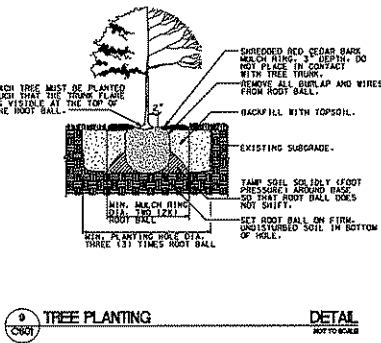
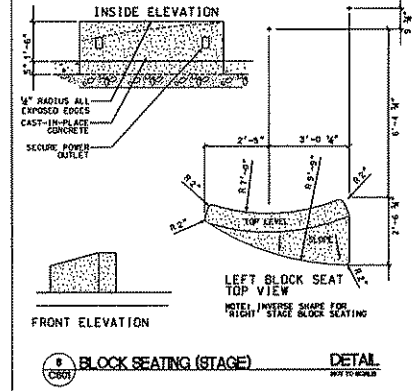
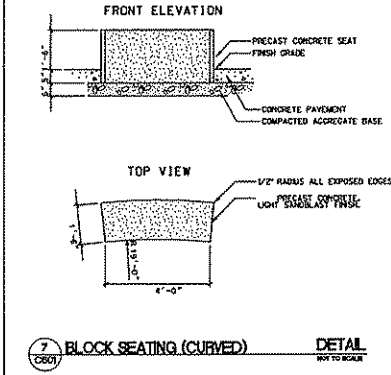
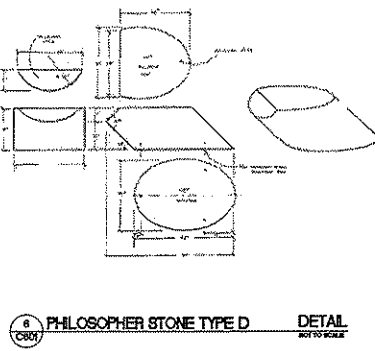
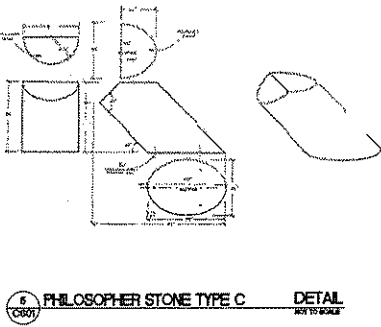
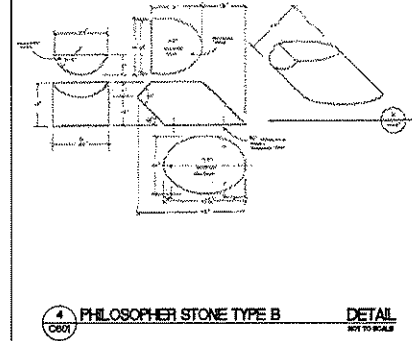
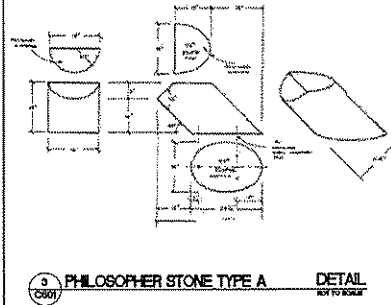
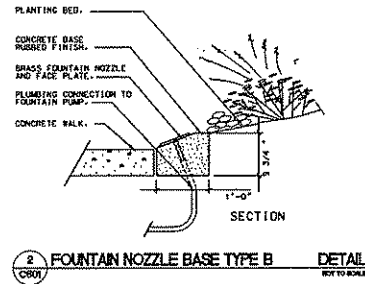
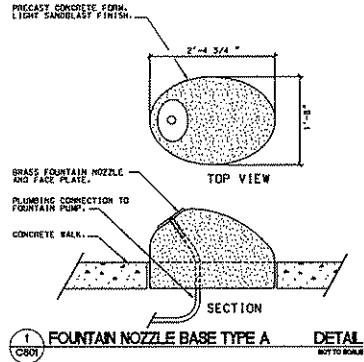


Issuance/Revision	Date

Project No.	5349
Drawn By	MS
Checked By	MS
Date	07-15-09

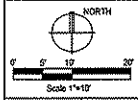
SITE DETAILS

Sheet No.
C600



Consultants

Elizabeth Link Peace Park Redevelopment
229 W. Gilman Street, Madison, WI

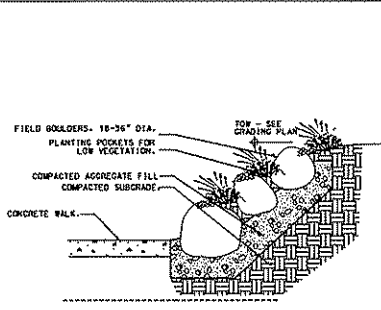


Issuance/Revision	Date

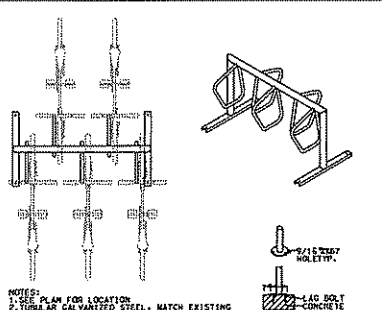
Project No. 6340
Drawn By MAS
Checked By MAS
Date 07-15-09
Sheet Title

SITE DETAILS

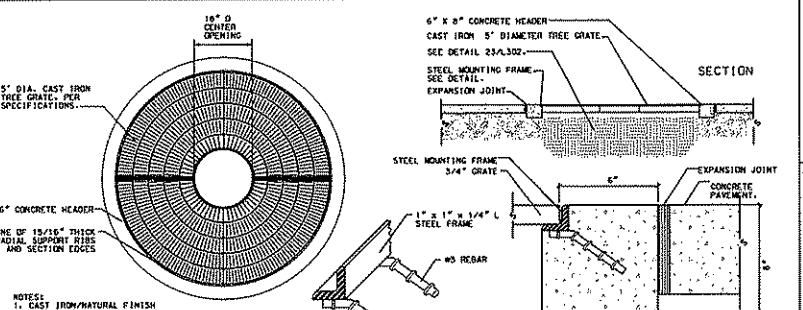
Sheet No. C601



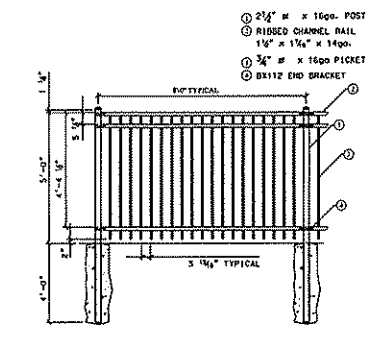
1 PLANTED BOULDER WALL DETAIL NOT TO SCALE



2 BIKE RACKS DETAIL NOT TO SCALE



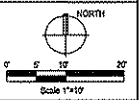
3 TREE GRATE DETAIL NOT TO SCALE



4 STEEL FENCE DETAIL NOT TO SCALE

Consultants

Elizabeth Link Peace Park Redevelopment
229 W. Gilman Street, Madison, WI

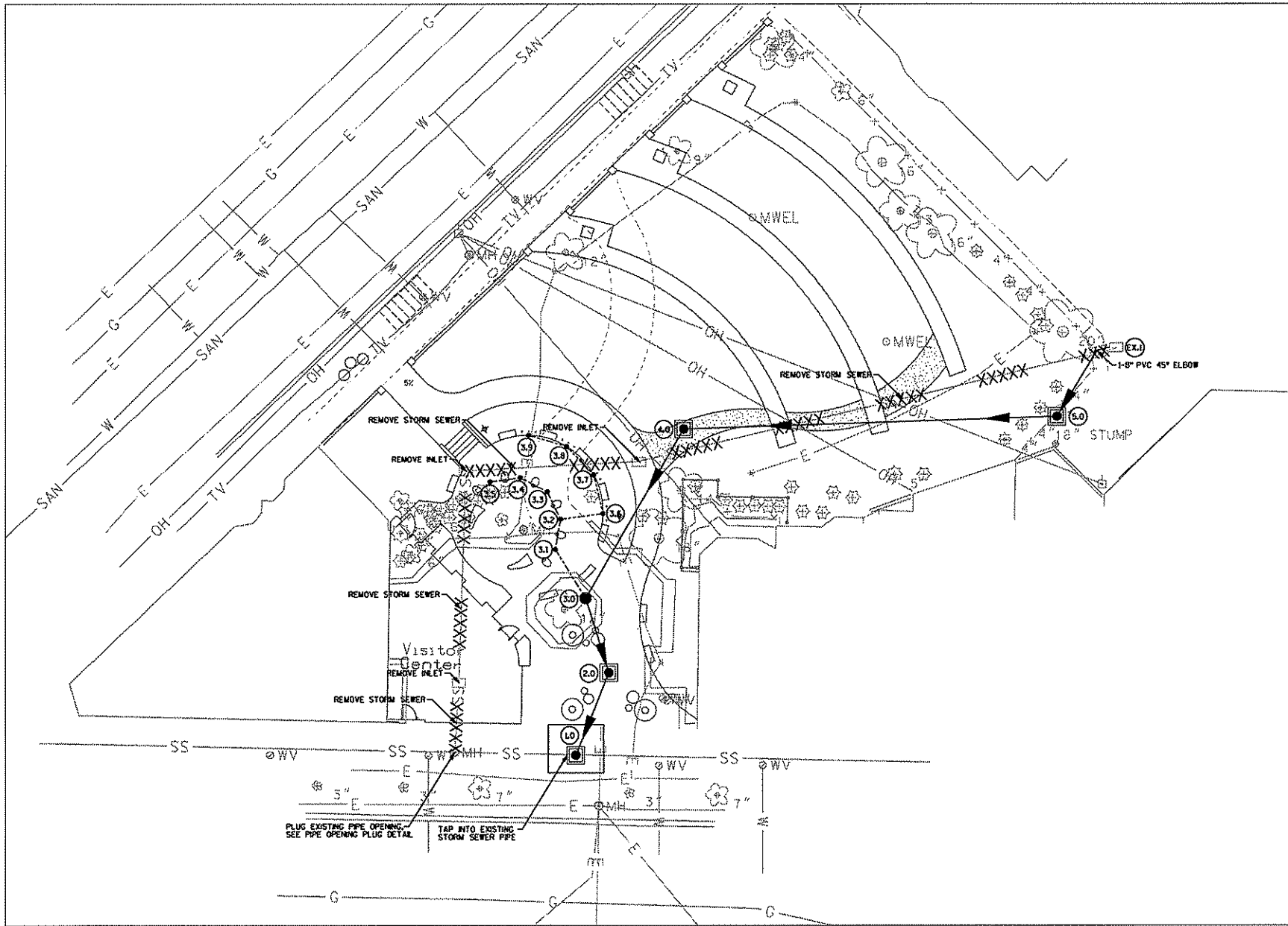


Issuance/Revision	Date

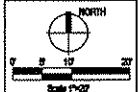
Project No. 5340
Drawn By: MS
Checked By: MS
Date: 07-15-99
Sheet Title:

SITE DETAILS

Sheet No. **C602**



Elizabeth Link Peace Park Redevelopment
 229 W. Gilman Street, Madison, WI

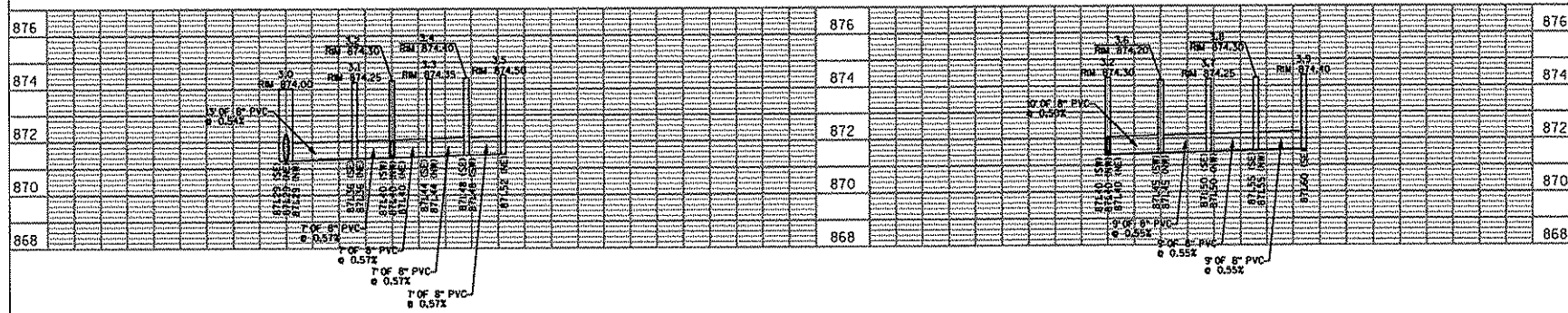
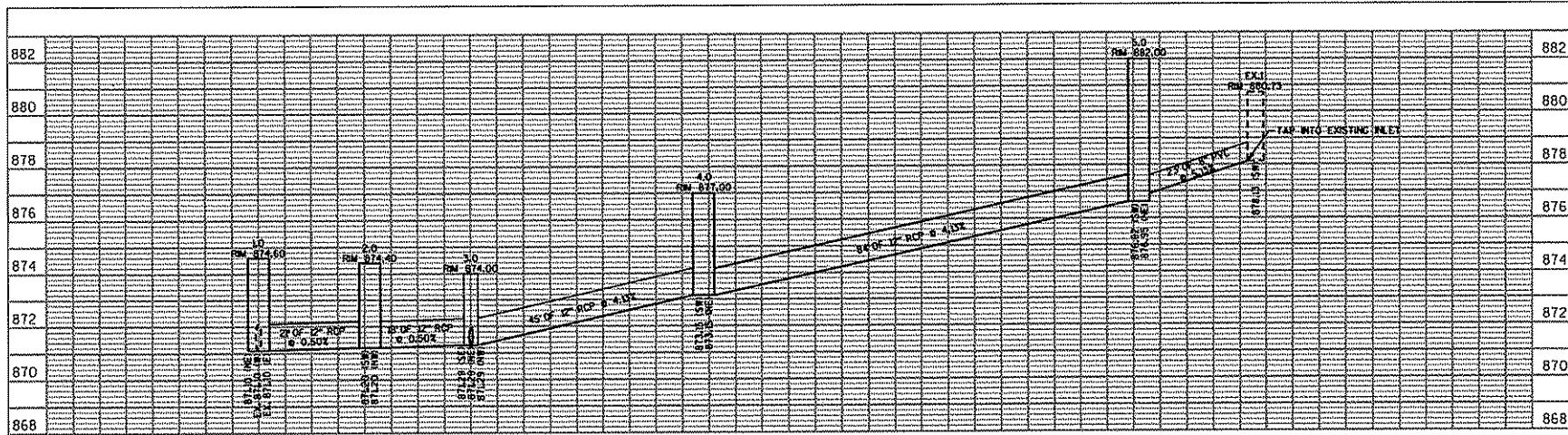


Issued/Revised	Date
Draw	7-15-00

Project No.	6540
Drawn By	JTD
Checked By	XX
Date	7-25-00
Sheet Title	

Storm Sewer

Sheet No.
C700

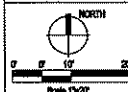


Structure ID	Location	Structure Type	Cover Type	Ris Elevation	Invert Elevation	Structure Depth	Notes
1.0		SAS 3x3	R-1550 w/ Logo	874.60	871.10	3.50	
2.0		SAS 3x3	R-1550 w/ Logo	874.40	871.20	3.20	
3.0		Catchbasin 24"	Decorative Drain, 25"	874.00	871.29	2.71	
3.1		Catchbasin 12"	Decorative Drain, 12"	874.25	871.36	2.89	
3.2		Catchbasin 12"	Decorative Drain, 12"	874.30	871.40	2.90	
3.3		Catchbasin 12"	Decorative Drain, 12"	874.35	871.44	2.91	
3.4		Catchbasin 12"	Decorative Drain, 12"	874.40	871.48	2.92	
3.5		Catchbasin 12"	Decorative Drain, 12"	874.50	871.52	2.98	
3.6		Catchbasin 12"	Decorative Drain, 12"	874.20	871.45	2.75	
3.7		Catchbasin 12"	Decorative Drain, 12"	874.25	871.50	2.75	
3.8		Catchbasin 12"	Decorative Drain, 12"	874.30	871.55	2.75	
3.9		Catchbasin 12"	Decorative Drain, 12"	874.40	871.60	2.80	
4.0		SAS 3x3	R-1550 w/ Logo	877.00	871.51	5.49	
5.0		SAS 3x3	R-1550 w/ Logo	882.00	874.00	8.00	
Ex.1				880.73	878.13	2.60	

Downstream Structure	to	Upstream Structure	Pipe	Length
1.0	to	2.0	12" RCP	21
2.0	to	3.0	12" RCP	10
3.0	to	3.1	8" PVC	13
3.1	to	3.2	8" PVC	7
3.2	to	3.3	8" PVC	7
3.3	to	3.4	8" PVC	7
3.4	to	3.5	8" PVC	7
3.5	to	3.6	8" PVC	10
3.6	to	3.7	8" PVC	8
3.7	to	3.8	8" PVC	9
3.8	to	3.9	8" PVC	9
3.9	to	4.0	12" RCP	45
4.0	to	5.0	12" RCP	84
5.0	to	Ex. 1	8" PVC	23



Elizabeth Link Peace Park Redevelopment
229 W. Gloman Street, Madison, WI

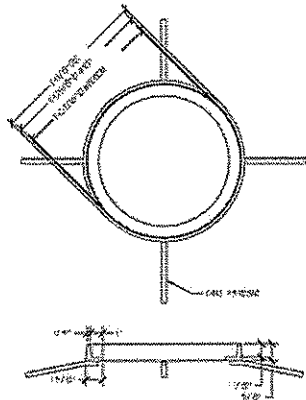


Revised	Date
Draw	7-13-08

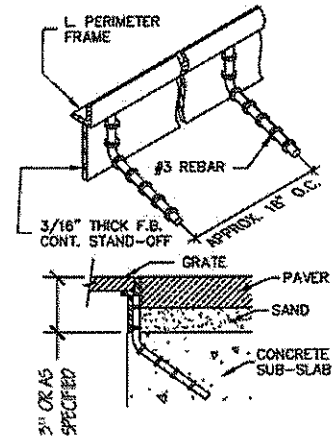
Project No. 630
Drawn By JTD
Checked By JC
Date 7-13-08

Storm Sewer Profiles and Schedules

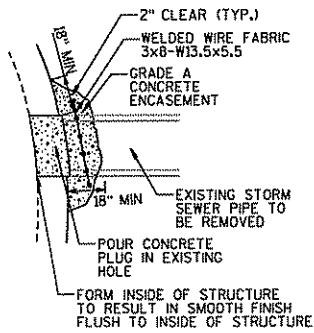
Sheet No. C701



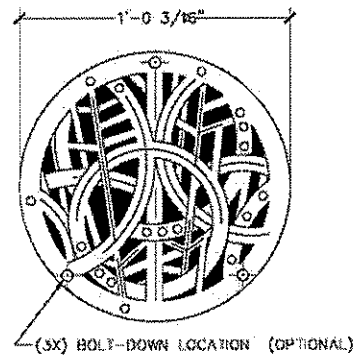
12" DIA. CAST "S" FRAME DETAIL
SCALE: NONE



12" DIA. PAVER FRAME DETAIL
SCALE: NONE

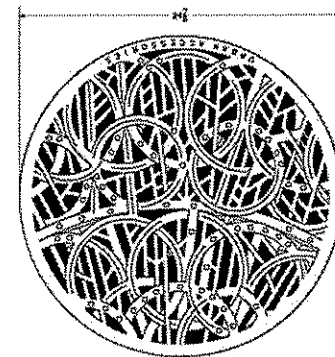


PIPE OPENING PLUG DETAIL
SCALE: NONE



NOTES:
1. CAST IRON/ NATURAL FINISH
2. CAST IN ONE PIECE, 3/4" THICK
3. NO OPENING GREATER THAN 3/8"

12" DIA. QT-T24 DRAIN COVER DETAIL
SCALE: NONE



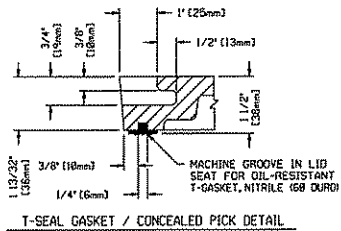
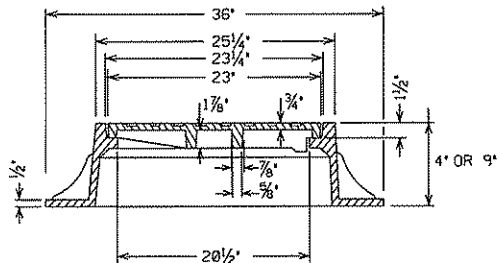
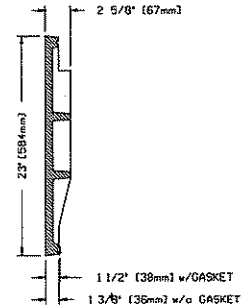
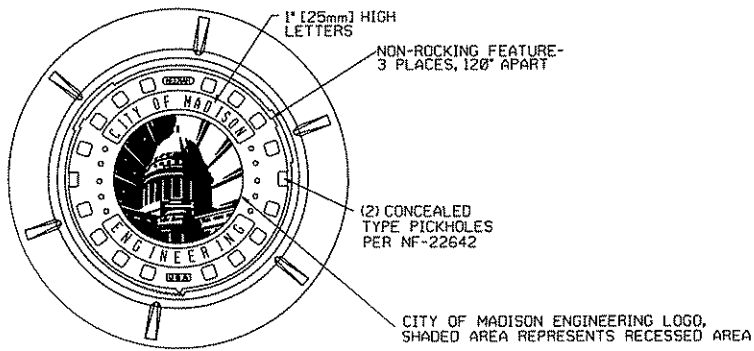
NOTES:
1. CAST IRON/ NATURAL FINISH
2. CAST IN ONE PIECE, 3/4" THICK

25" DIA. QT-T24 DRAIN COVER DETAIL
SCALE: NONE



Elizabeth Link Peace Park Redevelopment
229 W. Gilman Street, Madison, WI

NORTH	
0 5 10 20	
Scale 1"=10'	
Author/Designer	Date
Drawn	7-13-09
Project No.	6040
Drawn By	JTD
Checked By	XX
Date	7-13-09
Sheet Title	Storm Sewer Details
Sheet No.	C702



LOGO DETAIL

NOTES:

APPROXIMATE TOTAL WEIGHTS:
 R-1550 w/ LOGO LID 1550-0054, 9' FRAME AND LID = 265 LBS.
 R-1689 w/ LOGO LID 1550-0054, 4' FRAME AND LID = 279 LBS.

IF LOCKABLE LID IS NECESSARY, R-1920, 83/4' FRAME AND LID = 300 LBS
 THERE IS NO CITY OF MADISON LOGO LID AVAILABLE FOR THIS
 FRAME AND CASTING.

THE FOLLOWING NEENAH FOUNDRY CASTINGS (OR EQUAL CASTINGS) SHALL BE ACCEPTABLE:

1. R-1550, 9' NON-ROCKING ACCESS STRUCTURE FRAME.
2. R-1689, 4' NON-ROCKING ACCESS STRUCTURE FRAME (WHEN REQUESTED BY THE CITY CONSTRUCTION ENGINEER).
3. R-1920, 83/4' ACCESS STRUCTURE FRAME WITH LOCKING LID, TYPE 'F' LOCKS, AND CONCEALED PICK HOLES. TO BE USED IN GREENWAYS AND EASEMENTS.

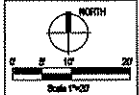
1. FRAME AND COVER SHALL BE MACHINED AND FITTED SO THAT ROCKING AND CHATTERING WILL BE ELIMINATED.
2. ALL LIDS SHALL BE SELF-SEALING EXCEPT FOR STORM SEWER.
3. ALL LIDS SHALL HAVE CITY OF MADISON LOGO AS SHOWN IN DETAIL (R-1550-0054 OR EQUIV.)

LID NOTES: ALL DIMENSIONS SHOWN ARE IN ENGLISH AND (METRIC)
 MATERIAL: CAST GRAY IRON ASTM A-48, CLASS 35B

CITY OF MADISON SAS FRAME AND COVER
 SCALE: NONE



Elizabeth Link Peace Park Redevelopment
 229 W. Gilman Street, Madison, WI



Revisions/Revisions	Date
Draw	7-13-09

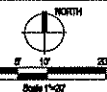
Project No.	R40
Drawn By	JTD
Checked By	XX
Date	7-13-09
Sheet Title	Storm Sewer Details

Sheet No.
C703

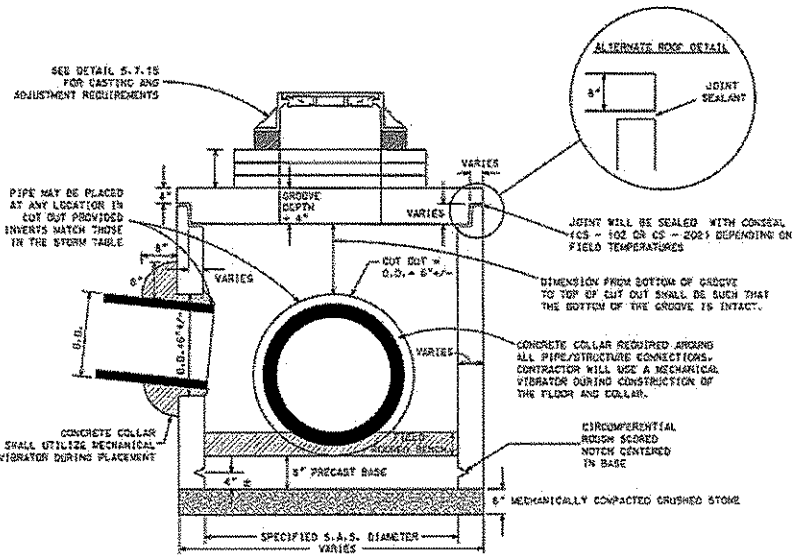


210 Sycamore Lane Madison, WI 53706
 608.261.1170 1.800.448.6829 Fax: 608.261.0666
 We believe in innovation and
 the professional service

Elizabeth Link Peace Park Redevelopment
 229 W. Gilman Street, Madison, WI

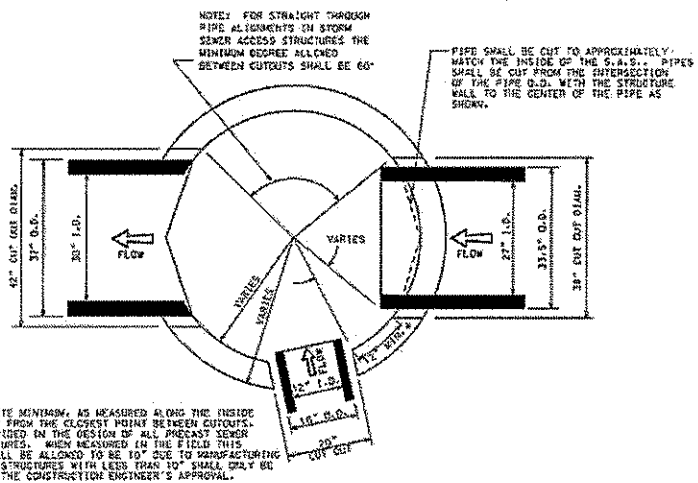


Revision/Function	Date
01	7-15-08
Project No.	0540
Drawn By	JTD
Checked By	XX
Date	7-15-08
Sheet Title	Storm Sewer Details
Sheet No.	C704



CITY OF MADISON PRECAST SAS MANHOLE STRUCTURE (SECTION VIEW)
 SCALE: NONE

NOTE: ALL STORM SEWER ACCESS STRUCTURES (S.A.S.) SHALL BE CONSTRUCTED IN COMPLIANCE WITH ASTM C478

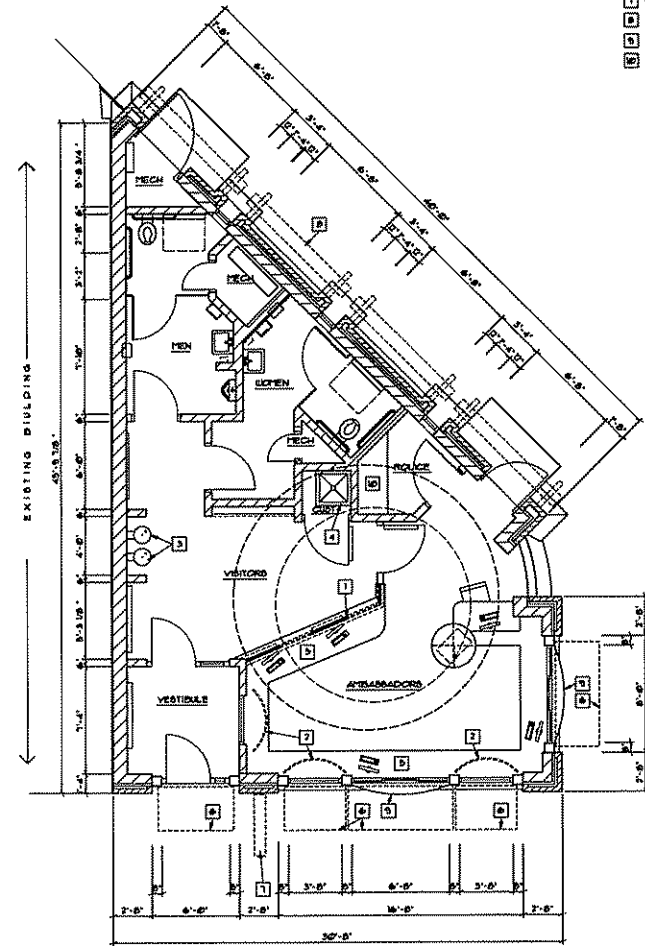


NOTE: PIPES SHOWN IN VARIOUS CONSTRUCTION STAGES FOR ILLUSTRATIVE PURPOSES.

CITY OF MADISON PRECAST SAS MANHOLE STRUCTURE (TOP VIEW)
 SCALE: NONE

BOX NOTES

- 1 GLASS SERVICE WINDOW 1'-0" AFF. OPEN ABOVE
- 2 DISPLAY AREA BY OWNER
- 3 HI-LOW DRINKING FOUNTAIN - SEE PLUMBING
- 4 POP BASK - SEE PLUMBING
- 5 SERVICE COUNTER AT 36" AFF
- 6 AIDINGS ABOVE
- 7 SIGNAGE ABOVE
- 8 TRELLIS ABOVE
- 9 WALK-UP SERVICE WINDOW
- 10 POLICE WORK COUNTER AT 36" OC (TDD)

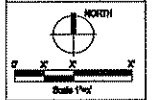


FLOOR PLAN
 1/4" = 1'-0" (22x34)
 1/8" = 1'-0" (16x17)



MSA
 CONSULTING, INC.
 225 North Industrial Avenue, WI 53133
 414.226.2771 1-800-363-0300
 Web Address: www.msa.com
 © 2007 MSA CONSULTING, INC.

Elizabeth Link Peace Park Redevelopment
 228 W. Climan Street, Madison, WI

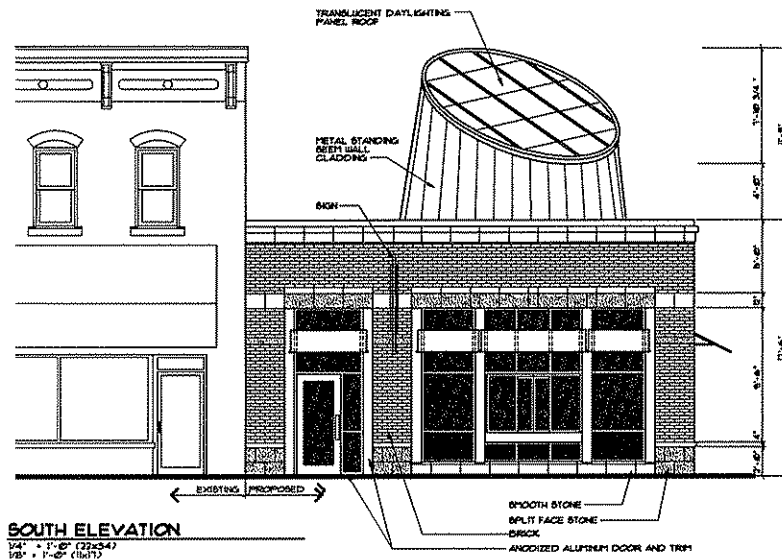


Insurance/Revision	Date

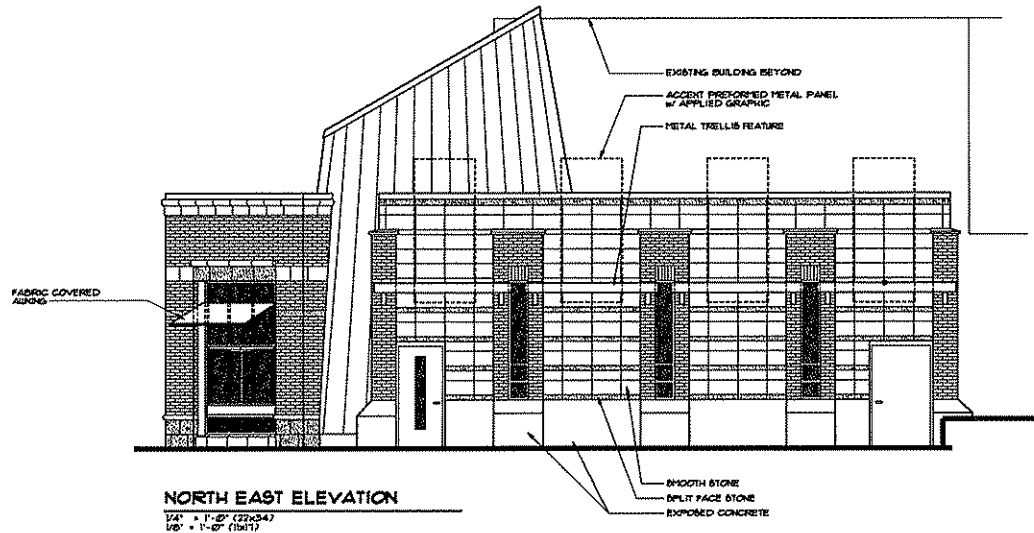
Project No. 0340
 Drawn By ASL
 Checked By ECA
 Date 07-15-09
 Sheet Title

FLOOR PLAN

Sheet No.
A100



SOUTH ELEVATION
 1/4" = 1'-0" (22x34)
 1/8" = 1'-0" (14x17)



NORTH EAST ELEVATION
 1/4" = 1'-0" (22x34)
 1/8" = 1'-0" (14x17)



Consultants
MSA
 CONSULTANTS, INC.
 ARCHITECTURE • INTERIORS
 DEVELOPMENT • INFRASTRUCTURE
 1201 South Zeeb Road, Madison, WI 53713
 Tel: 608-271-1888 Fax: 608-271-1889
 www.msaconsultants.com

Elizabeth Link Peace Park Redevelopment
 228 W. Climan Street, Madison, WI

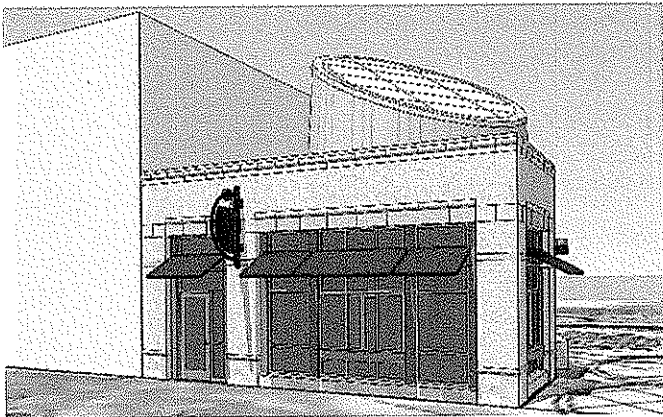


Revision/Function	Date

Project No. 8510
 Drawn By AEL
 Checked By ECA
 Date 07-18-09
 Sheet Title

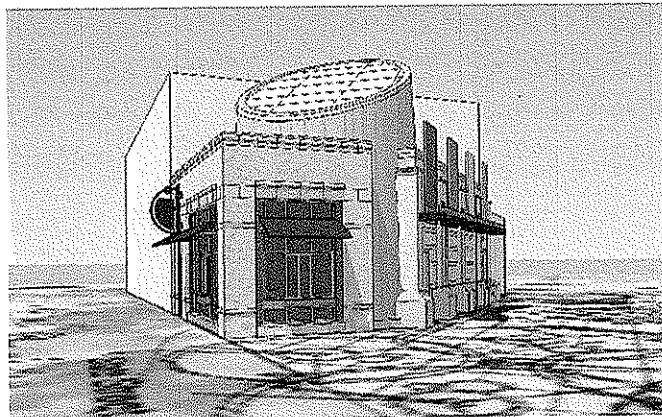
ELEVATIONS

Sheet No. **A200**



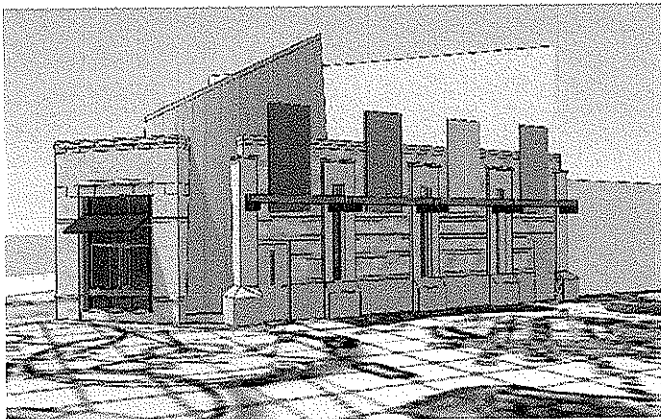
PERSPECTIVE 1

NTB



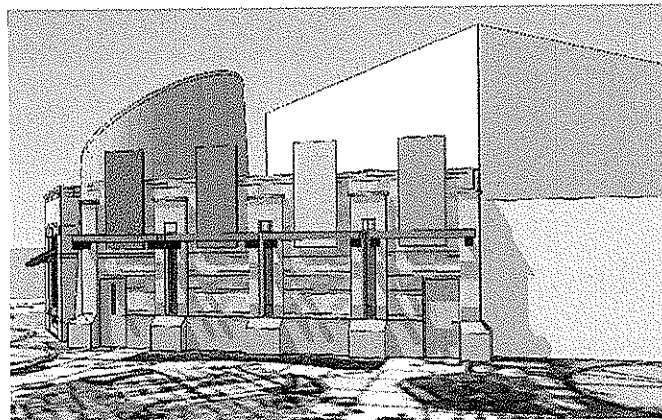
PERSPECTIVE 2

NTB



PERSPECTIVE 3

NTB



PERSPECTIVE 4

NTB



Credits

MSA

COMMUNITY DEVELOPMENT • ENVIRONMENTAL
 DEVELOPMENT • ARCHITECTURAL
 1220 South Boulevard, Madison, WI 53713
 PHONE: 608-261-1400
 FAX: 608-261-1401
 WWW: WWW.MSADIVISION.COM

LOCAL ARCHITECT

Elizabeth Link Peace Park Redevelopment
 229 W. Gilman Street, Madison, WI



Revisions/Author	Date

Project No. 6340
 Drawn By ASB
 Checked By ECA
 Date 07-16-02
 Sheet Title

PERSPECTIVES

Sheet No.
A300

GENERAL NOTES

1. *
2. *
A. *

KEYNOTES CED

1. SUPPLY AND RETURN DUCTS OFF BOTTOM OF UNIT TO CONDITION SPACE. FINAL DUCT TRACKING TO BE DETERMINED BY FINAL FLOOR PLAN LAYOUT.



Consultant

Elizabeth Link Peace Park Redevelopment
229 W. Gilman Street, Madison, WI



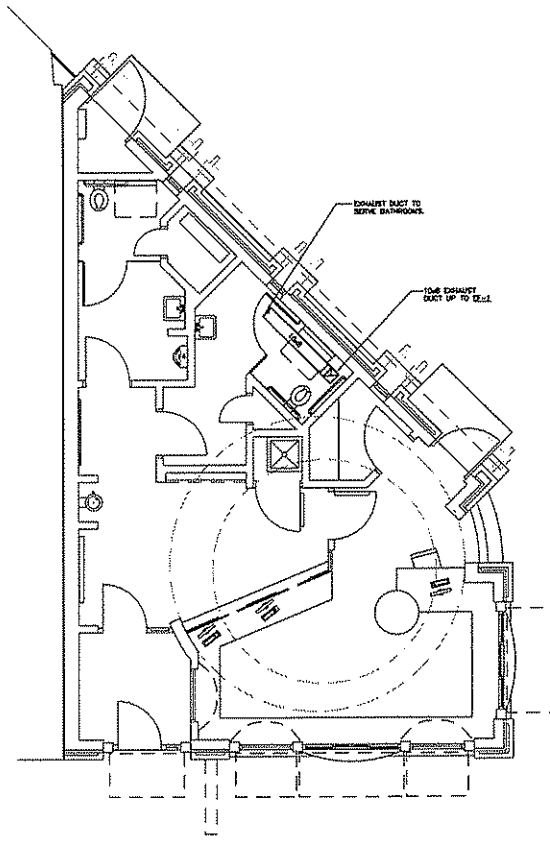
Issuance/Revision	Date

Project No. 02-0
 Drawn By MCE
 Checked By
 Date 07-15-07

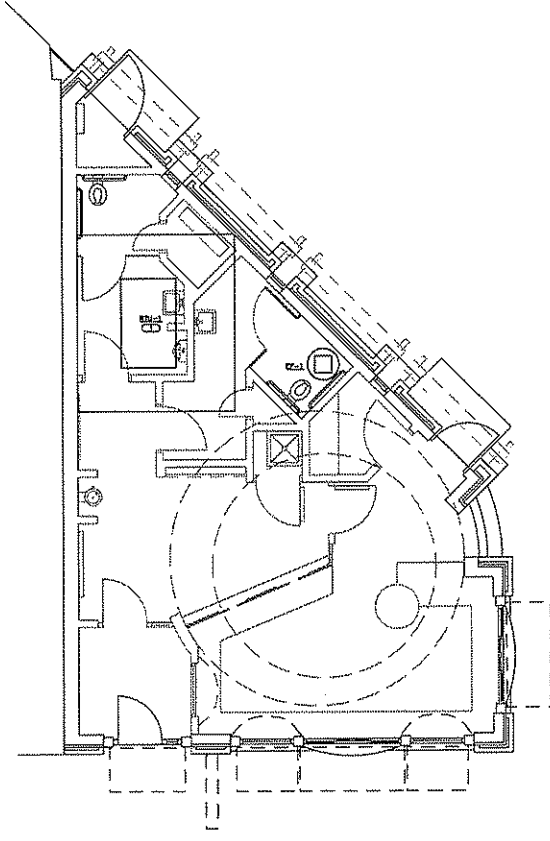
Sheet Title
MECHANICAL PLANS

Sheet No.
M101

**PRELIMINARY
NOT FOR
CONSTRUCTION**



1 MECHANICAL
SCALE 1/8"=1'-0"



2 ROOFTOP MECHANICAL
SCALE 1/8"=1'-0"

ELIZABETH LINK PEACE PARK REDEVELOPMENT

ROOFTOP AIR HANDLING UNIT SCHEDULE - GAS/ELECTRIC

SYMBOL		RTU#
SERVICE		
GENERAL		
SUPPLY FAN		
CFM	1,000	
MINIMUM CFM		
EXTERNAL STATIC PRESSURE		
TYPE		
FAN RPM (NOTE D)		
SWP (NOTE E)		
MHP (NOTE F)	1	
RETURN FAN		
CFM		
MINIMUM CFM		
EXTERNAL STATIC PRESSURE		
TYPE		
FAN RPM (NOTE D)		
SWP (NOTE E)		
MHP (NOTE F)		
MINIMUM OUTSIDE AIR CFM		
HEATING - GAS		
MINIMUM EFFICIENCY AFUE	78	
MINIMUM OUTPUT BHP	39	
GAS PRESSURE IN W.C.	2	
COOLING COIL - DX		
EAT °F DB	57	
EAT °F WB	76	
MAX LAT °F DB	55	
LAT °F WB		
TOTAL BHP	33	
AMBIENT TEMPERATURE °F		
MAX. A.P.D. IN W.C.		
REFRIGERANT	R-410A	
MINIMUM EFFICIENCY		
DEFROSTING		
FILTER		
TYPE		
VELOCITY		
ROOM CURS (NOTE G)		
VIBRATION ISOLATION		
TYPE		
DEFLECTION		
ELECTRICAL		
VOLT-PHASE	208-3	
FLAURA		
MCA		
MCCP AMP'S		
DISCONNECT BY (NOTE A)	EC	
DISCONNECT TYPE (NOTE B)		
CONTROLLER/STARTER BY (NOTE A)		
CONTROLLER/STARTER TYPE (NOTE C)		
MANUFACTURER	TRANE	
MODEL NUMBER	YHC4431	
REMARKS		

NOTES:
1. LAT LISTED IN AT (LEAVING SIDE OF COOLING COIL) (IN CHARGE OF RTU)

FAN SCHEDULE

SYMBOL	SERVICE	CFM	IN. DI. W.C.	FAN CLASS	WHEEL DIA. (INCHES)	FAN RPM (NOTE F)	DRON	MAX. ANGLE (DEG)	BASECRAFT DAMPER	CURR. TYPE (NOTE G)	VIBRATION ISOLATION		ELECTRICAL		CONTROLLER/STARTER	MANUFACTURER	#DOOR	REMARKS
											TYPE	DEFL.	SWP (NOTE E)	MHP (NOTE F)				
EFA	GENERAL EXHAUST	300	4.5	1B	12.0	1,710										COOK	BRIDA	

NOTES:

SCHEDULE GENERAL NOTES:

A. DISCONNECT AND CONTROLLER/STARTER FURNISHED AND INSTALLED BY:
 EW = MANUFACTURER
 EC = ELECTRICAL CONTRACTOR
 MC = FURNISHED BY MECHANICAL CONTRACTOR, INSTALLED BY ELECTRICAL CONTRACTOR
 MW = C = FURNISHED LOOSE BY MANUFACTURER
 * INSTALLED BY ELECTRICAL CONTRACTOR
 ATC = AUTOMATIC TEMPERATURE CONTROL CONTRACTOR

B. DISCONNECT TYPE:
 F = FUSED
 NF = NON-FUSED

C. CONTROLLER/STARTER TYPE:
 TT = FULL VOLTAGE
 NYE = NYE-DELTA
 SS = SOLID STATE (SOFT START)
 BS = MANUAL STARTER
 VD = VARIABLE FREQUENCY DRIVE
 VDSB = VARIABLE FREQUENCY DRIVE WITH OVERSPEED

D. FAN RPM SHALL NOT EXCEED 110% OF SCHEDULED VALUE, WITH THE SCHEDULED WHEEL TYPE. SUBSTITUTION OF 50 OR 60 HZ FANS FOR 60 HZ IS ACCEPTABLE IF EFFICIENCY IS NOT LOWER.

E. NO EQUIPMENT SHALL BE SELECTED ABOVE 80% OF MOTOR NAME PLATE RATED.

F. MUST BE WITHIN $\pm 1\%$ OF SCHEDULED RPM.

G. CURD TYPE:
 MR = STANDARD CURD BY MANUFACTURER
 GC = BY GENERAL CONTRACTOR
 MLC = SOUND ATTENUATION CURD

GENERAL NOTES

1. *
2. *
3. *

KEYNOTES CD

1. *
2. *
3. *



Consultants

Elizabeth Link Peace Park Redevelopment
229 W. Gilman Street, Madison, WI



Issuance/Revision	Date

Project No. 634-0
 Drawn By MBE
 Checked By
 Date 07-15-09

Sheet Title
MECHANICAL SCHEDULES

Sheet No.
M201

**PRELIMINARY
NOT FOR
CONSTRUCTION**

R:\M201\09071000\ELIZABETH LINK PEACE PARK REDEVELOPMENT

GENERAL NOTES	
1.	REFER TO SHEET P101 FOR PLUMBING ROUGH-IN SCHEDULE.
KEYNOTES	
1.	
2.	
3.	



Consultants

Elizabeth Link Peace Park Redevelopment
229 W. Gilman Street, Madison, WI



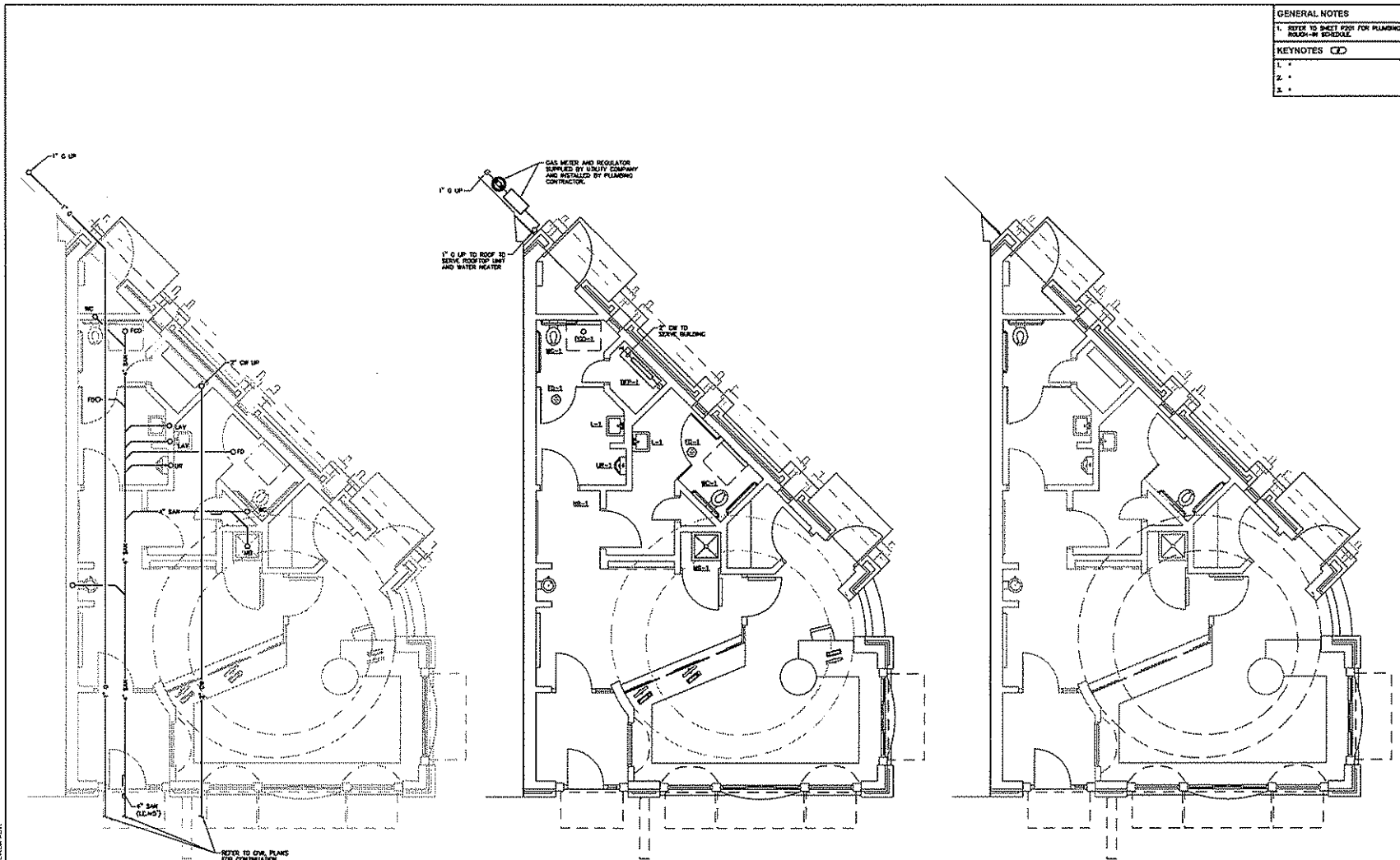
Insurance/Review	Date

Project No.	65-0
Drawn By	SAHE
Checked By	
Date	01-15-07

Sheet Title
PLUMBING PLANS

Sheet No.
P101

**PRELIMINARY
NOT FOR
CONSTRUCTION**



1 UNDERFLOOR PLUMBING
SCALE: 1/8" = 1'-0"

2 PLUMBING
SCALE: 1/8" = 1'-0"

3 ROOF TOP PLUMBING
SCALE: 1/8" = 1'-0"

ELIZABETH LINK PEACE PARK REDEVELOPMENT

PLUMBING MATERIAL LIST
<p>THE FINISHES AND THE MATERIAL LIST ARE THE RESPONSIBILITY OF THE CONTRACTOR. CONTRACTOR SHALL VERIFY QUALITIES AND FINISHES OF ALL MATERIALS REQUIRED FOR FULLY OPERATIONAL SYSTEMS, WHETHER SPECIFIED OR NOT.</p> <p>OUTLASH MANUFACTURERS SHALL, BUT ARE NOT LIMITED TO, INDICATE THE QUANTITY REQUIRED. CONTRACTOR IS RESPONSIBLE FOR COMPLETE IDENTIFICATION OF FINISHES AND OPERATIONS BEFORE ORDERING. THE DESCRIPTION OF THE MATERIAL, FINISHES AND OPERATIONS OVER THE CATALOG NUMBER, THE FIRST MANUFACTURER LISTED IS THE BASIS OF ORDER.</p> <p>CONTRACTOR SHALL VERIFY THAT FINISHES, SUPPLIES ARE APPROVED FOR ALL APPLICABLE STATE, LOCAL AND GOVERNING AUTHORITIES.</p>
<p>WC-1.1</p> <p>BACK FLOW PREVENTER - REDUCED PRESSURE ZONE, BRONZE OR FOR APPROVED EPDM COATED BRASS BODY CONSTRUCTION. SIZE SAME AS THE NON-CORRODE MATERIAL. WHITE, STAINLESS STEEL SPRING, DIFFERENTIAL PRESSURE RELIEF VALVE BETWEEN SPRING-LOADED CHECK VALVES. SHUT-OFF VALVE ON INLET AND OUTLET OF EACH. USE GAS AND OILING. TEST POINTS WITH SHUT-OFF VALVES. FACTORY TESTED, RATED FOR 175 PSI AT 33°F TO 140°F, IS 20 (SHARED) PRESSURE DROP AT 10 GPM. ALL PARTS TO BE SCHWABER-WOODHEAD MANUFACTURING LIST FROM LINE, APPROVED BY USC FOOD & DRUG ADMIN. 211-22. ASSE 1013, UFMAD AND BRASS LISTED.</p> <p>ACCEPTABLE MANUFACTURERS: WAITS 8907</p> <p>MOUNT AT 6" (MINIMUM) ABOVE FINISHED FLOOR. PROVIDE AND INSTALL BRONZE OR EPDM COATED STRAINER UPSTREAM FROM UNIT. INSTALL ADDITIONAL VALVE UPSTREAM FROM STRAINER IF REQUIRED FOR SERVICE ISOLATION. FLOW PRESSURE DROP VALUES SHALL BE SUBMITTED.</p>
<p>ED-1.1</p> <p>FLOOR CLEANOUT - CAST IRON THREADED ADJUSTABLE HOUSING, FLANGED TERMINE WITH PLUG AND SECURED MODEL BRONZE TOP. TOP STYLE SHALL MATCH FLOOR FINISH AS FOLLOWS:</p> <p>UNFINISHED FLOOR - ROUND BEZEL SCRAPED TOP TILE OR TERRAZZO - ROUND BEZEL TOP FOR CARPET CARPET - ROUND TOP WITH CARPET MARCH</p> <p>ACCEPTABLE MANUFACTURERS: ZURN (2-1400), BATH (4000), WAGE (6000), ZSRAM (8000), WAITS (90-200), MFAS (20100)</p>
<p>UD-1</p> <p>FLOOR DRAIN - CAST IRON BODY, MODEL BRONZE ADJUSTABLE TOP, 6" ROUND, 3" BOTTOM OUTLET, FLANGING COLLAR, DEEP SEAL TRAP.</p> <p>ACCEPTABLE MANUFACTURERS: ZURN (2-415), BATH (4000), WAGE (6000), ZSRAM (8000), WAITS (90-200), MFAS (20100)</p>
<p>WC-1.1</p> <p>WATER CLOSET - HOOK WALL HYDRANT, BRASS CONSTRUCTION, STANDARD FINISH, VACUUM BREAKER, 3/4" MALE HOSE THREAD, LOOSE KEY.</p> <p>ACCEPTABLE MANUFACTURERS: HOFFMANN (74)</p> <p>MOUNT AT [...] ABOVE FINISHED FLOOR.</p>
<p>LA-1</p> <p>LAVATORY - WALL MOUNTED, WHITE WIRELESS CHINA, 20"x16", 4" HIGH CONTIGUOUS BACKCROWN, SINGLE FAUCET HOLE, DRILLED FOR CONCEALED JAW CARBON.</p> <p>ACCEPTABLE MANUFACTURERS: KOHLER (K-3037)</p> <p>ACCESSORIES - QUARTER-TURN 3/8" CHROME PLATED HEAVY BRASS ANGLE SUPPLY LOOSE KEY STOP, CHROME PLATED SOFT COPPER SUPPLY LINES, 1-1/4" 90 DEGREE CAST BRASS P-TRAIP, SUPPORT CARBON.</p> <p>MOUNT LAVATORY WITH SUPPORT CARBON BOLTS SECURELY TO FLOOR. TOP OF FIN SHALL BE AT 3" ABOVE FLOOR.</p> <p>LAVATORY TRIM - SECTION ACTIVATED MIRROR FAUCET, HAND-MISSED BRASS CONSTRUCTION, CHROME-PLATED BRASS CONSTRUCTION, BODY WITH HANDLE, REGULATOR ADJUST, SINGLE HOLE, NONPOTATED CROWN DRINK WITH 1-1/4" 17 GAUGE TAMPERS, SOLID BRASS BOLDING WITH 1/2"x1/4" FILTER, SOLID BRASS MANUAL, BRASS VALVE WITH ADJUSTABLE TEMPERATURE LIMIT STOP AND INTEGRAL CHECK VALVES, WATERPROOF CONNECTORS AND 10' LONG CABLE, IS APPROVED TRANSDUCERS.</p> <p>ACCEPTABLE MANUFACTURERS: SLOAN (STV-602)</p> <p>ELECTRICAL REQUIREMENTS - 120 VAC INPUT</p> <p>MOUNT TRANSFORMER ABOVE CEILING OR IN ACCESSIBLE PIPE CHASE. MAXIMUM FLOW TO BE 6.5 GPM IN COMPLIANCE WITH ENERGY POLICY ACT OF 1995 AND SOME/ANSI STANDARD RATING IS. PROVIDE RESTRICTIVE DEVICE AS REQUIRED. MOUNT MOUNTING VALVE UNDER COUPLER/LAVATORY. MOUNTING VALVE SHALL NOT BE WIRE PATTERNS.</p>
<p>WB-1</p> <p>WATER BATH - MOUNTED STONE, WHITE WITH BLACK ACCENTS, 24"x24"x10", STAINLESS STEEL, SHAM WITH OPERATOR FROM LONG STRAINER AND LINT BASKET, 3" OUTLET, WATER BEASER GRAVED ON EXPOSED SIDE.</p> <p>ACCEPTABLE MANUFACTURERS: FAY (668), WELLS (678), DEW (662), ZURN (2-1998)</p> <p>TRIM - EXPOSED TWO HANDLE MIRROR FAUCET, BRASS CONSTRUCTION, CHROME-PLATED FINISH, BRASS AND NIBBLE, 3/4" HOSE THREAD SHOUT WITH INTERNAL VACUUM BREAKER, WALL BRASS, PINK, INTEGRAL STOP.</p> <p>ACCEPTABLE MANUFACTURERS: CHICAGO FAUCET (89), TIS BRASS (9-867), ZURN (2-84141), DETA (82783), MOEN (8734), SHAWMUT (077-658)</p> <p>ACCESSORIES - MOP HANDLE, HOSE AND HOSE BRACKET, DEEP SEAL TRAP, CAULK BETWEEN MOP BATH AND WALL WITH SLOTTED SIZED CAULK.</p> <p>Notes to specifier: 1. If required a hose on type vacuum breaker similar to Model 8A.</p>
<p>WC-1</p> <p>WATER CLOSET - ACCESSIBLE, WALL HANG, FLUSH VALVE TYPE, WHITE WIRELESS CHINA, WASHOUT SEAT, WATER SAVING, 1/4" REAR SPIN, 2" OUTLET, CLOGGED REM AND EXTENDED SIDE BRACE.</p> <p>ACCEPTABLE MANUFACTURERS: KOHLER (K-4960-ES)</p> <p>FLUSH VALVE - EXPOSED, SENSOR OPERATED, HANDMISSED, CHROME-PLATED 3/4" I.P.S. DOWNSTREAM STOP-CHROME VALVE, CHEMICAL RESISTANT MATERIAL, VACUUM BREAKER, SPUD FLANGE, IS CALLING FOR FLOOR, RANGE ADJUSTMENT SCREEN, BRASS DEFLECTOR, CHROME-PLATED COVER PLATE WITH TAMPER-PROOF SCREEN, SENSOR OPERATED CAPABLE OF OPERATING UP TO 10 UNITS, 3-YEAR WARRANTY.</p> <p>ACCEPTABLE MANUFACTURERS: SLOAN (ROYAL 185-1 ES-3)</p> <p>ACCESSORIES - SUPPORT CARBON WITH TOP AND BOTTOM BEARING PLATES.</p> <p>ELECTRICAL REQUIREMENTS - 120VAC INPUT</p> <p>MOUNT WITH CARBON BOLTS SECURELY TO FLOOR. TOP OF BOWL FIN SHALL BE AT 17" MAXIMUM ABOVE FLOOR IN COMPLIANCE WITH ADA SECTION 4.16. VERIFY EQUIPMENT REQUIREMENTS AND ROUGH-IN LOCATIONS.</p>

PLUMBING MATERIAL LIST (CONTINUED)
<p>WC-1</p> <p>WATER CLOSET - ACCESSIBLE, WALL HANG, FLUSH VALVE TYPE, WHITE WIRELESS CHINA, SHOWN AT, WATER SAVING, ELONGATED BOWL, 1 1/2" REAR SPIN.</p> <p>ACCEPTABLE MANUFACTURERS: KOHLER (K-4516)</p> <p>SEAT - WHITE, EXTRA HEAVY, OPEN FRONT, MULTICOLOR BOLD SOLID PLASTIC, SELF-SUSTAINING CHECK FINISH, STAINLESS STEEL OR PLATED STEEL POSTS AND NUTS.</p> <p>ACCEPTABLE MANUFACTURERS: BROWN (19930)</p> <p>FLUSH VALVE - EXPOSED, SENSOR OPERATED, HANDMISSED, CHROME-PLATED 3/4" I.P.S. DOWNSTREAM STOP-CHROME VALVE, CHEMICAL RESISTANT MATERIAL, VACUUM BREAKER, SPUD FLANGE, IS CALLING FOR FLOOR, RANGE ADJUSTMENT SCREEN, BRASS DEFLECTOR, CHROME-PLATED COVER PLATE WITH TAMPER-PROOF SCREEN, SENSOR OPERATED CAPABLE OF OPERATING UP TO 10 UNITS, 3-YEAR WARRANTY.</p> <p>ACCEPTABLE MANUFACTURERS: SLOAN (ROYAL 185-1 ES-3)</p> <p>ACCESSORIES - WATER CLOSET SUPPORT CARBON RATED FOR 500 LBS.</p> <p>ELECTRICAL REQUIREMENTS - 120VAC INPUT</p> <p>MOUNT WATER CLOSET WITH CARBON BOLTS SECURELY TO FLOOR. TOP OF SEAT SHALL BE AT 17" TO 19" ABOVE FINISHED FLOOR (VERIFY EXACT MOUNTING HEIGHT WITH MANUFACTURER).</p>

PLUMBING FIXTURE ROUGH-IN SCHEDULE

FIXTURE DESCRIPTION	DOMESTIC C/P (NOTE 1)	DOMESTIC S/P (NOTE 2)	SAVITARY (NOTE 3)	VENT (NOTE 4)	REMARKS
WATER CLOSET	1"	-	6"	3"	(FLUSH VALVE)
URINAL	3/4"	-	3"	1 1/2"	(FLUSH VALVE - WASHDOWN)
LAVATORY	1/2"	1/2"	1 1/2"	1 1/4"	NOTE 1 & 2
MOP BASH	3/4"	3/4"	3"	1 1/2"	-
ELECTRIC WATER COOLER	1/2"	-	1 1/2"	1 1/4"	NOTE 1 & 2
FLOOR DRAIN	-	-	3"	1 1/2"	-
WATER BATH	1/2"	-	-	-	NOTE 2 (LUT DIAMETERS)

NOTES:
 1. SAVITARY RISES UP IN WALL TO FIXTURE SHALL BE A MINIMUM OF 2".
 2. 1/2" C/P AND S/P APPLIES ONLY TO THE FINAL VERTICAL RISE-DROP TO EACH FIXTURE. BRANCH PIPING TO VERTICAL RISE-DROP SHALL BE A MINIMUM OF 1/4" INCH UNLESS NOTED OTHERWISE.
 3. RISES SHOWN ARE APPROXIMATE. RISES SHOWN ON THE DRAWING THAT ARE LARGER THAN THE RISES LISTED IN THE SCHEDULE SHALL OVERTAKE THE ROUGH-IN SIZE.

GENERAL NOTES

1. *
2. *
3. *

KEYNOTES (X)

1. *
2. *
3. *



Consultants

Elizabeth Link Peace Park Redevelopment
 229 W. Gilman Street, Madison, WI



Revisions	Date

Project No.	63-0
Drawn By	NRE
Checked By	
Date	01-15-09

Sheet Title
PLUMBING MATERIAL LIST
 Sheet No.
P201

PRELIMINARY NOT FOR CONSTRUCTION

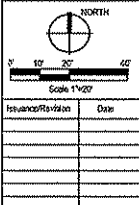
3/21/2009 12:31 AM By: MATTHEW J. OSHKO

- GENERAL NOTES**
1. *
 2. *
 3. *
- KEYNOTES CD**
1. CONNECT TO METER BASE. REFER TO S/E/01 FOR CONNECTION.
 2. CONNECT TO ELECTRICAL SERVICE IN STATE STREET. COORDINATE WITH UTILITY.

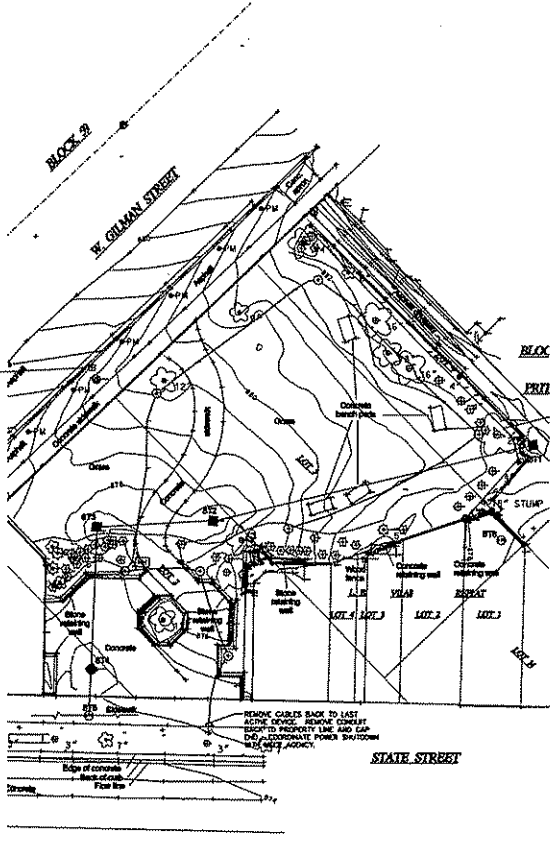


Consultants

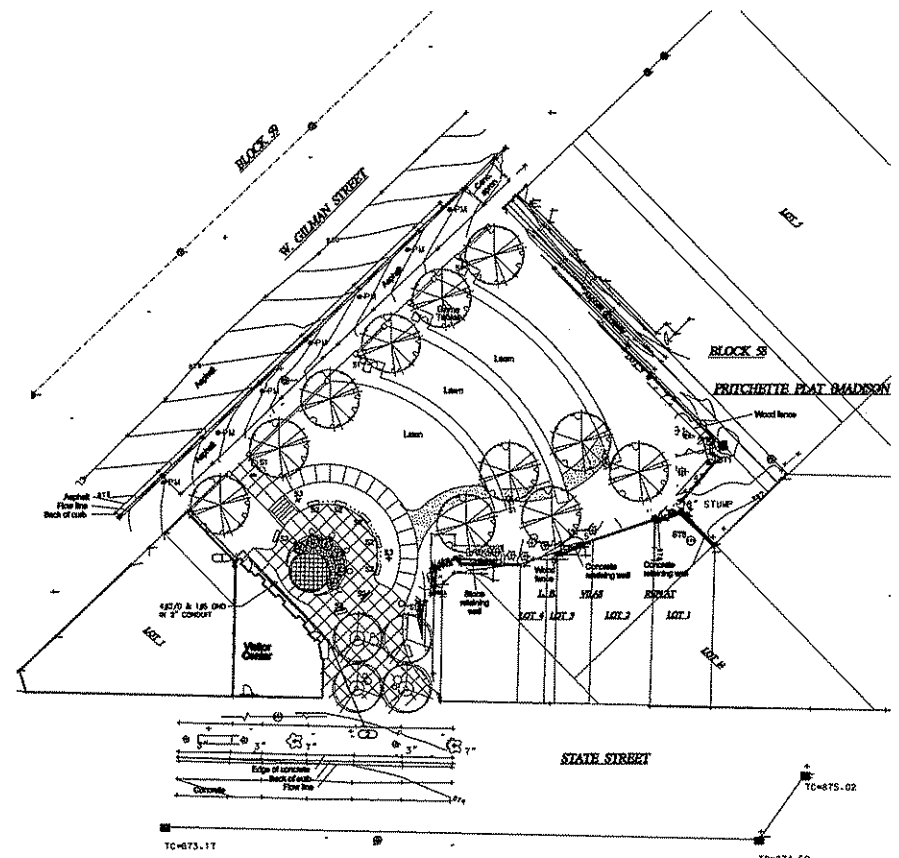
Elizabeth Link Peace Park Redevelopment
229 W. Gilman Street, Madison, WI



Project No.	6340
Drawn By	FM
Checked By	
Date	01-13-09
Sheet Title	SITE - ELECTRICAL
Sheet No.	E100



1 SITE DEMO- ELECTRICAL
SCALE 1"=20'



2 SITE - ELECTRICAL
SCALE 1"=20'

**PRELIMINARY
NOT FOR
CONSTRUCTION**

KIM SAIR CONSULTANTS, INC. PEACE PARK REDEVELOPMENT

GENERAL NOTES

1. *
2. *
3. *

KEYNOTES 

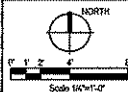
1. MECHANICAL EQUIPMENT LOCATED ON ROOF. MOUNT EQUIPMENT TO LIMIT, COORDINATE WITH ME.



KELL SAUNDERS
1111 W. WASHINGTON
MADISON, WI 53703
TEL: 608.261.1111
WWW.KELLSAUNDERS.COM

Contract

Elizabeth Link Peace Park Redevelopment
229 W. Gilman Street, Madison, WI



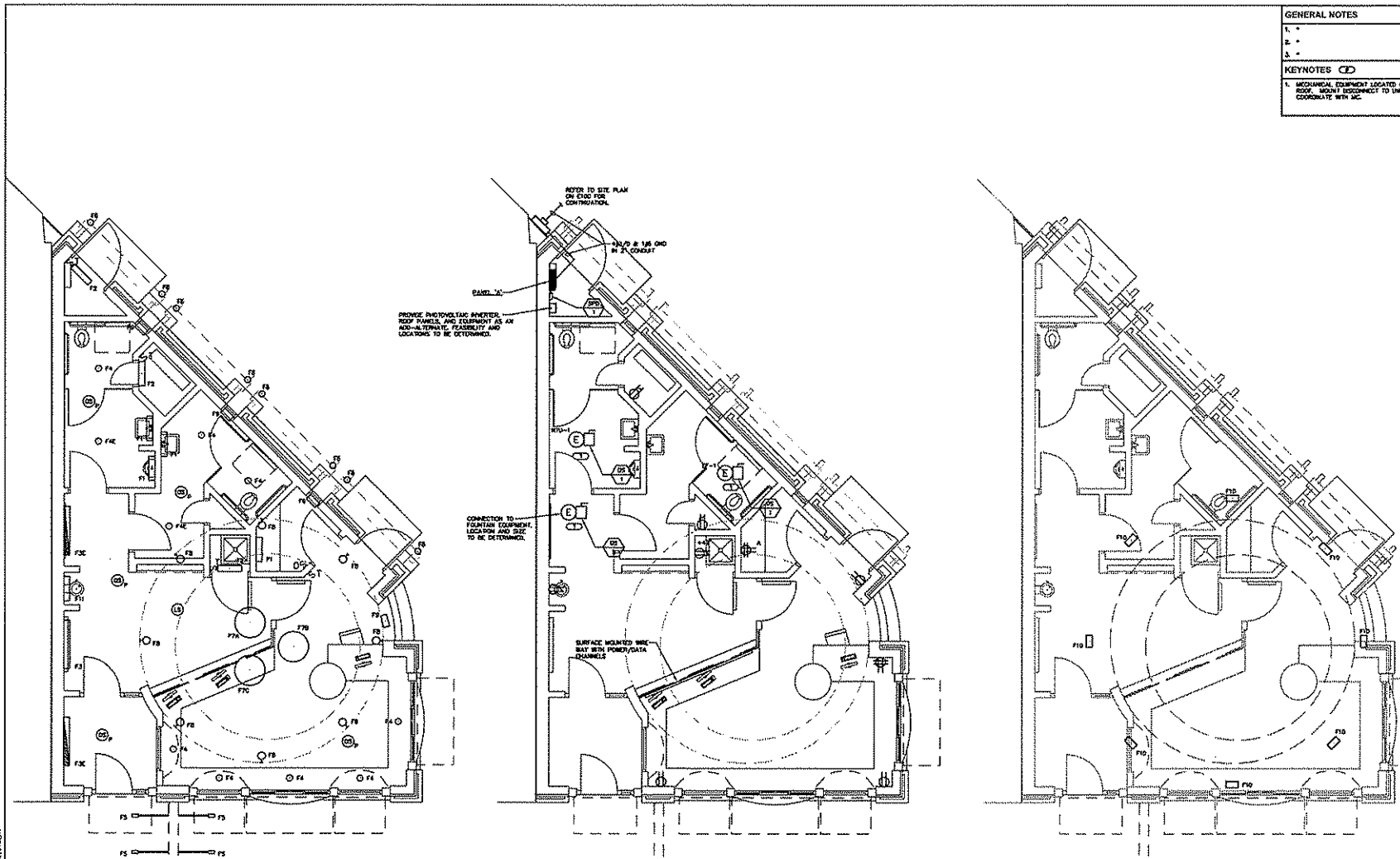
Revision	Date

Project No.	6340
Drawn By	IFM
Checked By	
Date	01-15-09

Sheet Title
ELECTRICAL PLANS

Sheet No.
E101

**PRELIMINARY
NOT FOR
CONSTRUCTION**



 **1 ELECTRICAL LIGHTING**
SCALE: 1/4"=1'-0"

 **2 ELECTRICAL POWER**
SCALE: 1/4"=1'-0"

 **3 ELECTRICAL LIGHTING - ROOF**
SCALE: 1/4"=1'-0"

WWW.KELLSAUNDERS.COM/ELIZABETH LINK PEACE PARK REDEVELOPMENT

ELECTRICAL DEMOLITION NOTES:

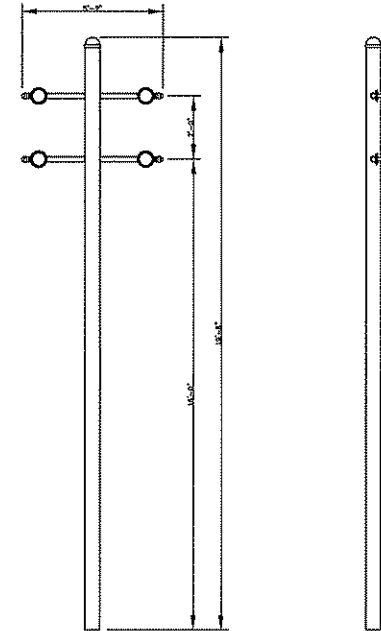
1. THE ELECTRICAL CONTRACTOR MUST EXISTING ELECTRICAL IS TO BE REMOVED. THE CONTRACTOR IS TO BE RESPONSIBLE FOR THE SCOPE OF WORK REQUIRED AND TO NOT REMOVE OR DESTROY ANY ELECTRICAL EQUIPMENT THAT IS NOT TO BE REMOVED. THE CONTRACTOR SHALL VISIT THE SITE PRIOR TO SUBMITTING A BID AND VERIFY EXISTING CONDITIONS.
2. ELECTRICAL ITEMS (E.G., LIGHTING FIXTURES, SWITCHES, ETC.) SHALL BE REMOVED AND NOT RELOCATED UNLESS THE PROPERTY OF THE OWNER. THE CONTRACTOR SHALL BE RESPONSIBLE FOR THE REMOVAL OF MATERIAL. THE OWNER DOES NOT WANT TO REUSE OR REINSTALL, FOR MAINTENANCE PURPOSES.
3. THE CONTRACTOR SHALL OBTAIN APPROVAL FROM THE OWNER BEFORE TURNING OFF POWER TO COMPLETE FEDERAL PANELS, ETC. COORDINATE ALL DEMOLITION WORK. CONDUIT CONCEALED IN WALL CONSTRUCTION MAY BE RE-ANCHORED IN PLACE IF NOT AFFECTED BY OTHER CONSTRUCTION.
4. WHERE LIGHTS ARE BEING REMOVED ALL ASSOCIATED CONDUIT AND WIRE BACK TO THE PANELBOARD OR FLOOR JUNCTION BOX. CARRYING THE DEVICE SHALL ALSO BE REMOVED, UNLESS THE CONTRACTOR CAN BE RELEASED FOR NEW CONDUITS.
5. THE CONTRACTOR SHALL COORDINATE ALL HIS WORK WITH OTHER CONTRACTORS AT THE JOB SITE BEFORE REMOVING EXISTING ELECTRICAL AND INSTALLING NEW ITEMS.
6. EXISTING CONDUIT IN GOOD CONDITION MAY BE REUSED IN PLACE. RELOCATED EXISTING CONDUIT SHALL NOT BE ALLOWED. REMOVED CONDUITS SHALL BE INSTALLED BY ALL REUSED CONDUIT TO ASSURE PROPER GROUND PATH.
7. EQUIPMENT REMOVAL IN CERTAIN LOCATIONS MAY REQUIRE THE INSTALLATION OF A JUNCTION BOX TO DISCONNECT EQUIPMENT THAT REMAINS IN OPERATION. OTHER CONDUIT AND WIRING AS REQUIRED TO MAINTAIN POWER TO REMAINING EQUIPMENT.
8. WALLETS BEING REMOVED FROM THIS CONSTRUCTION AND SHALL BE RESPONSIBLE BY A FEDERAL OR STATE E.P.A. APPROVED METHOD AND IN ACCORDANCE WITH SPECIFICATIONS.
9. HID AND FLUORESCENT LAMPS CONTAIN MERCURY AND SHALL BE DISPOSED OF BY A FEDERAL OR STATE E.P.A. APPROVED METHOD AND IN ACCORDANCE WITH SPECIFICATIONS.

ELECTRICAL INSTALLATION NOTES:

1. THE COMPLETE INSTALLATION SHALL BE IN ACCORDANCE WITH THE AIA/IBCA STANDARDS WITH NATIONAL ELECTRICAL CODES (NEC).
2. CIRCUIT BREAKERS ARE SHOWN FOR CIRCUIT IDENTIFICATION. CIRCUITRY SHALL AGREE WITH HANDWRITING ON THE PANELS. PROVIDED, CIRCUITRY BREAKERS MAY NOT BE USED FOR BRANCH CIRCUITS. BALANCE THE LOAD ON PAGES AS NEARLY AS POSSIBLE BETWEEN EACH PHASE.
3. CIRCUIT BREAKER EMERGENCY AND OFF LIGHTS SHALL BE PLACED SEPARATE RACEWAY FROM ALL OTHER CIRCUITS.
4. A FID GROUND INSULATED CONDUCTOR SHALL BE INSTALLED WITH CIRCUIT CONDUCTORS TO ALL RECEPTACLES.
5. CONDUIT ALL CONDUIT IN WALLS, PARTITIONS, ABOVE CEILING AND IN FLOOR SLAB, ETC. UNLESS OTHERWISE INDICATED ON THE PLANS OR IN THE SPECIFICATIONS, CONDUIT IN MECHANICAL, ELEVATOR AND SERVICE ROOMS WITHOUT CEILING MAY BE RUN ON BUILDING STRUCTURE.
6. BOXES LOCATED ON OPPOSITE SIDES OF NON-FRAME WALLS SHALL BE OFFSET HORIZONTALLY. BOXES ON OPPOSITE SIDES OF FIRE RATED WALLS SHALL BE OFFSET A MINIMUM OF 2" HORIZONTALLY. THROUGH WALL PROTECT SHALL NOT BE ALLOWED WITHOUT PERMIT WITHIN APPROVAL OF THE ARCHITECT'S SIGNATURE.
7. FLUSH MOUNT ALL TOGGLE SWITCHES AT 4" FROM FLOOR, CEILING, OR DIVISIONS, EXCEPT WHERE OTHERWISE NOTED. TOGGLE SWITCHES MAY BE SURFACE MOUNTED WHEN CONDUIT IS CONCEALED.
8. TWO ADJACENT SWITCHES SHOWN WITH A SINGLE CIRCUIT CONNECTION REQUIRES MULTILEVEL SWITCHES. BACKWARD AND OUTWARD LAMPS ARE TO BE BACKWARD EXCEPT AS NOTED.
9. FLUSH MOUNT ALL DUPLEX RECEPTACLES AND TELECOMMUNICATION OUTLETS AT 4" FROM FLOOR, CEILING, OR DIVISIONS, EXCEPT WHERE OTHERWISE NOTED. RECEPTACLES AND OUTLETS MAY BE SURFACE MOUNTED WHEN CONDUIT IS CONCEALED.
10. DUPLEX RECEPTACLES FOR ELECTRIC WATER COOLERS (EWC) SHALL BE CONCEALED BEHIND WATER COOLER ACCESS PLATE OR BE DIRECTLY BELOW AND CENTERED ON EWC. CONTRACTOR SHALL VERIFY TYPE OF EWC TO BE INSTALLED.
11. MOUNT RECESSED GROUND RECEPTACLES AT 4" FROM FLOOR EXCEPT WHERE OTHERWISE NOTED.
12. MOUNT ALL FIRE ALARM PULL STATIONS AT 4" FROM FLOOR (CEILING OR DIVISIONS) EXCEPT WHERE OTHERWISE NOTED.
13. INSTALL ALL WALL MOUNTED FIRE ALARM NOTIFICATION DEVICES AT 4" ABOVE FINISHED FLOOR OR 4" BELOW THE CEILING, WHICHEVER IS LOWER, EXCEPT WHERE OTHERWISE NOTED. HEIGHT SHALL BE MEASURED TO THE TOP OF THE DEVICE.
14. CONTRACTOR SHALL COORDINATE THE LOCATION OF ALL DETECTORS AND OR SPEAKERS WITH FURNITURE, SINKS, COUNTERS, AND CEILING DIFFUSERS. COORDINATE ALL DETECTOR LOCATIONS TO PATTERNS. SMOKE DETECTORS SHALL BE LOCATED NO CLOSER THAN 18" TO ANY SUPPLY DIFFUSER OR RETURN GRILLE.
15. CONTRACTOR SHALL VERIFY ALL FURNITURE, WOODWORK, PARTITIONS AND EQUIPMENT LOCATIONS WITH ARCHITECTURAL PLANS, ELEVATIONS AND REMOVE SHOP DRAWINGS. PRIOR TO MAKING THE ACTUAL ELECTRICAL INSTALLATION THE CONTRACTOR SHALL ADJUST RECEPTACLES, OUTLETS OR CONNECTIONS TO ACCOMMODATE FURNITURE AND/OR EQUIPMENT.
16. ELECTRICAL AND TELECOMMUNICATIONS EQUIPMENT SHALL BE MOUNTED TO AVOID OBSTRUCTION OR OPERATION OF, AND/OR ACCESS TO ALL MECHANICAL AND ELECTRICAL EQUIPMENT. ALL MOUNTING OF ELECTRICAL AND TELECOMMUNICATIONS EQUIPMENT ON EQUIPMENT SUPPLIED BY ANOTHER CONTRACTOR, SHALL BE APPROVED IN ADVANCE BY THE OTHER CONTRACTOR.
17. ALL FINAL ELECTRICAL CONNECTIONS TO MOTORS SHALL BE MADE WITH FLEXIBLE METAL CONDUIT. USE LIQUORIGHT CONDUIT AND FITTINGS (RIGID) STANDARD TO MOTORS. RIGID CONDUIT SHALL BE FROM CIRCUIT BREAKER TO MOTOR THROUGH FLEXIBLE CONDUIT. FLEXIBLE CONDUIT SHALL NOT EXCEED 6' IN LENGTH.
18. CONTRACTOR SHALL BE RESPONSIBLE FOR ALL OPENINGS REQUIRED IN WALLS. ALL OPENINGS SHALL BE REPAIRED TO MATCH EXISTING OR BY A QUALIFIED CONTRACTOR AT THE EXPENSE OF THE CONTRACTOR. ALL CONDUITS THROUGH WALLS SHALL BE GAPPED OR SEALED INTO OPENINGS.
19. ALL MATERIALS USED TO SEAL PENETRATIONS OF FIRE RATED WALLS AND FLOORS SHALL BE TESTED AND CERTIFIED AS A SYSTEM PER ASTM OR STANDARDS FOR FIRE TESTS OF THROUGH PENETRATIONS THROUGH FIRE RESISTING WALLS.
20. CONTRACTOR SHALL INSTALL AT EACH SERVICE ENTRANCE A CONDUIT DIRECTORY ACCORDING TO ARTICLE 230, PART 4 OF THE NATIONAL ELECTRICAL CODE.
21. ALL WELDED SHALL BE ACCORDING TO AMERICAN WELDING SOCIETY STANDARDS. CONTRACTOR SHALL FURNISH TO THE ARCHITECT ENGINEER CONTRACTOR THE WELDING EACH WELDER, PRIOR TO START OF WORK. THE ARCHITECT ENGINEER'S RESERVES THE RIGHT TO REMOVE OR REWORK ANY WELDING AT THE CONTRACTOR'S EXPENSE, OF ANY WELDING ASSIGNED TO THE A/E.
22. CONTRACTOR SHALL REMOVE AND REINSTALL ALL CEILING TRAYS AS REQUIRED FOR THE EXPOSITION OF ELECTRICAL WORK THAT IS OUTSIDE THE CONTRACT LIMITS OF CONSTRUCTION. CONTRACTOR SHALL REPLACE CEILING TRAYS WITH IDENTICAL MATERIAL WHERE DAMAGED BY THE CONTRACTOR.

GENERAL ELECTRICAL NOTES:

1. "100%" INDICATES DETAIL, FINISH, OR COMPLETE FINISH.
2. "100%" INDICATES MATERIAL LIST ITEM IN BIDDING SYMBOL.
3. "OF" INDICATED NOTES ARE USED TO SECURE ADDITIONAL INFORMATION OF WORK REQUIRED. SPECIFIED TO THE SHEET AND/OR DETAIL IS TO SHOW WITH.
4. "N" INDICATES LUMINAIRE IS UNWITNESSED FOR NIGHT LIGHT.
5. "S" INDICATES LUMINAIRE IS SWITCHED DURING NORMAL OPERATION AND OPERATES FROM EMERGENCY BATTERY IN CASE OF POWER. CORRECT THE SWITCHING DEVICE TO THE DALLAGE FOR NORMAL OPERATION. EXTEND "N" UNWITNESSED PORTION OF THE SAME CIRCUIT TO THE FUTURE FOR CONNECTION TO THE EMERGENCY BATTERY AND DALLAGE.
6. SHOWN LUMINAIRE OR DEVICE INDICATES LUMINAIRE OR DEVICE IS CONNECTED TO AN EMERGENCY CIRCUIT.
7. ALL ELECTRICAL CONDUCTIONS SHALL BE COPPER.
8. INDICATED NUMBER OF WIRES IN CONDUIT. ISOLATED GROUND WIRE GROUNDING WIRE NEUTRAL WIRE PHASE WIRE
9. SHOWN BY THESE LUMINAIRES DISCONNECTS LUMINAIRE OR GROUP OF LUMINAIRES BYPASSING SEPARATELY WIRE CONNECTED TO THE SAME BRANCH CIRCUIT. LUMINAIRES THAT DO NOT HAVE A RELOCATE MEANS OF SWITCHING IN A DIST. BOXES, EMERGENCY LIGHTS, NIGHT LIGHTS SHALL BE CONNECTED TO AN UNWITNESSED LEG OF THE BRANCH CIRCUIT.
10. INDICATED CONNECTION TO MATCHED NUMBER NUMBER ON ANOTHER SHEET. REFER TO ADJACENT RELEVANT NOTE FOR SHEET NUMBER WHERE CIRCUIT IS CONTINUED.
11. SHOWN ON CONDUIT RUN DENOTES SWITCHING SEPARATELY THROUGH RELAY OR CONTACTOR. REFER TO MOUNTING DETAIL WITH THE CIRCUITRY DIAGRAM. IF NO WIRE QUANTITY IS INDICATED, THEN CONDUIT, DEWASTE ADDITIONAL LEG OF BRANCH CIRCUIT IS 8-WIRE IS COMMON.
12. ABBREVIATION KEY:
 - E.C. ELECTRICAL CONTRACTOR
 - T.C. TELECOMMUNICATIONS CONTRACTOR
 - M.C. MECHANICAL CONTRACTOR
 - G.C. GENERAL CONTRACTOR
 - APF ABOVE FINISH FLOOR
 - C CEILING
 - TYP. TYPICAL
 - 4" MOUNTING HEIGHT FROM FINISHED FLOOR TO CENTERLINE
13. MOUNTING SUPPORT KEY:
 - A. RECEPTACLES AND TELECOMMUNICATIONS OUTLETS:
 - 1. MOUNT ABOVE COUNTER 1/4" TO CENTERLINE ABOVE COUNTER OR BACKSPLASH
 - 2. MOUNT IN LAB CASEWORK
 - 3. MOUNT DEVICE IN A HORIZONTAL ORIENTATION
 - 4. A STRIP IS USED BETWEEN TWO DEVICES IN A ROW
 - B. REFER TO MATERIAL LIST AND SPECIFICATIONS FOR FULL DESCRIPTIONS AND MANUFACTURERS OF ALL DEVICES.
14. LINE TYPE KEY:
 - NEW WORK BY THIS CONTRACTOR (DARK SOLID LINE)
 - EXISTING WORK (DARK DOTTED OR DASHED) BY THIS CONTRACTOR (DARK LONG DASHED LINE)
 - EXISTING WORK BY OTHERS (DARK DOTTED) TO REMAIN (BOLD LINE)
 - EXISTING TO BE REMOVED BY THIS CONTRACTOR (DARK SHORT DASHED LINE)



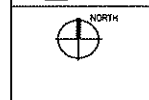
1 S3 CUSTOM LIGHT POLE
NO SCALE

GENERAL NOTES	
1.	*
2.	*
3.	*
KEYNOTES	
1.	*
2.	*
3.	*



Contract

Elizabeth Link Peace Park Redevelopment
228 W. Gilman Street, Madison, WI



Issuance/Revision	Date

Project No. 6340
Drawn By: FRM
Checked By:
Date: 07-15-09
Sheet Title: ELECTRICAL NOTES AND DETAILS

Sheet No. **E301**

PRELIMINARY NOT FOR CONSTRUCTION

DATE PLOTTED: 7/13/2009 10:40 AM BY: MATTHEW J. CHDS

GENERAL NOTES

- 1. *
 - 2. *
 - 3. *
- KEYNOTES CD
- 1. *
 - 2. *
 - 3. *



Consultants

Elizabeth Link Peace Park Redevelopment
229 W. Gilman Street, Madison, WI

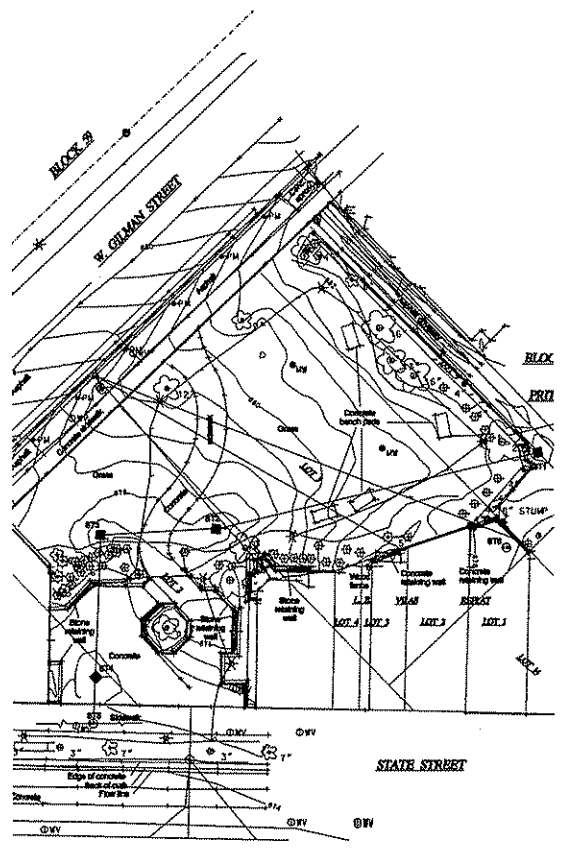


Insurance/Revision	Date

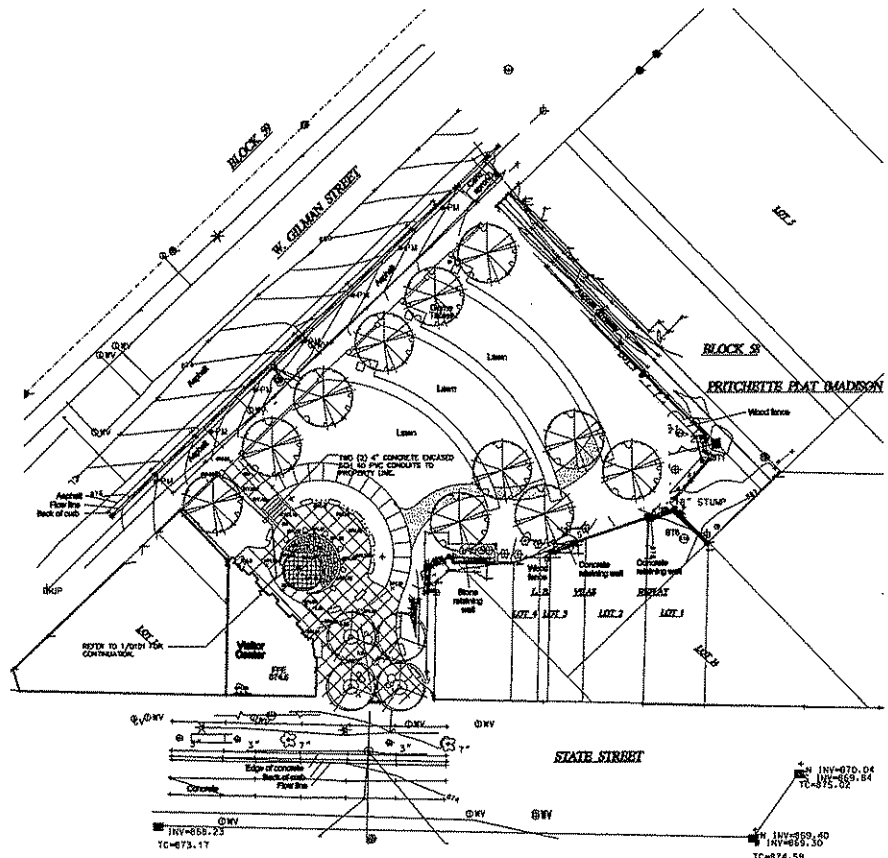
Project No. 6309
 Drawn By JPL
 Checked By
 Date 07-15-09
 Sheet No.

SITE - TECHNOLOGY

Sheet No. **Q100**



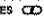
1 SITE DEMO- TECHNOLOGY
SCALE 1"=20'



2 SITE - TECHNOLOGY
SCALE 1"=20'

PRELIMINARY NOT FOR CONSTRUCTION

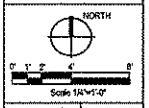
229 W. GILMAN STREET ELIZABETH LINK PEACE PARK REDEVELOPMENT

GENERAL NOTES	
1.	
2.	
3.	
KEYNOTES 	
1.	
2.	
3.	



Consultants

Elizabeth Link Peace Park Redevelopment
229 W. Gilman Street, Madison, WI



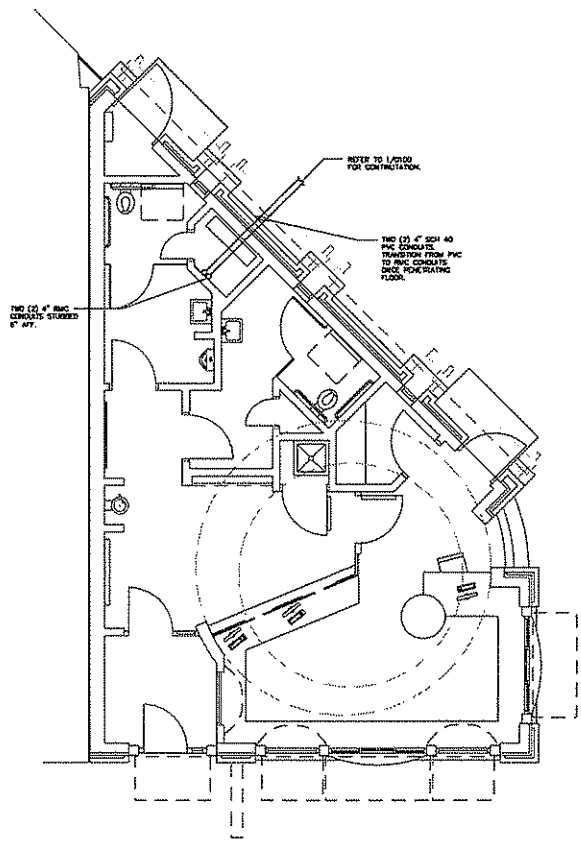
Revision/Revision	Date

Project No. 0340
 Drawn By JRE
 Checked By
 Date 07-15-09
 Sheet 786

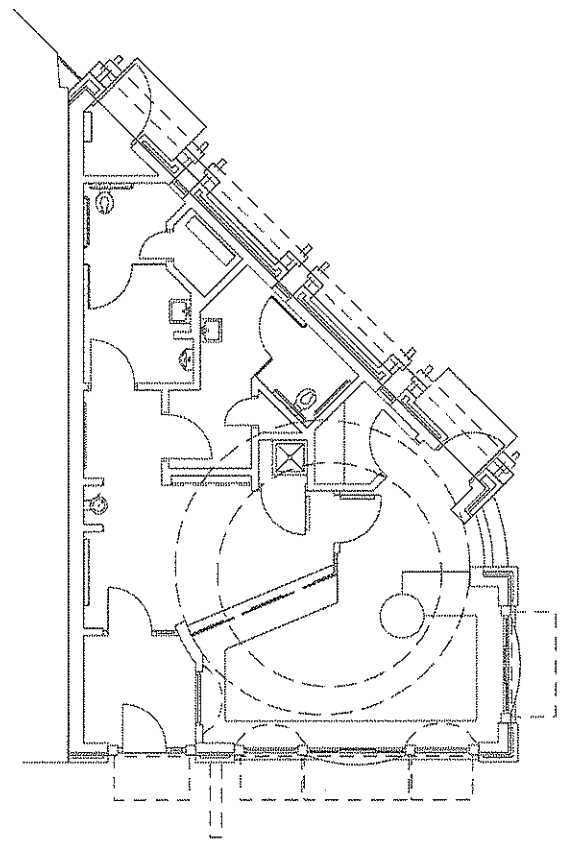
**TECHNOLOGY
PLANS**

Sheet No. **Q101**

**PRELIMINARY
NOT FOR
CONSTRUCTION**



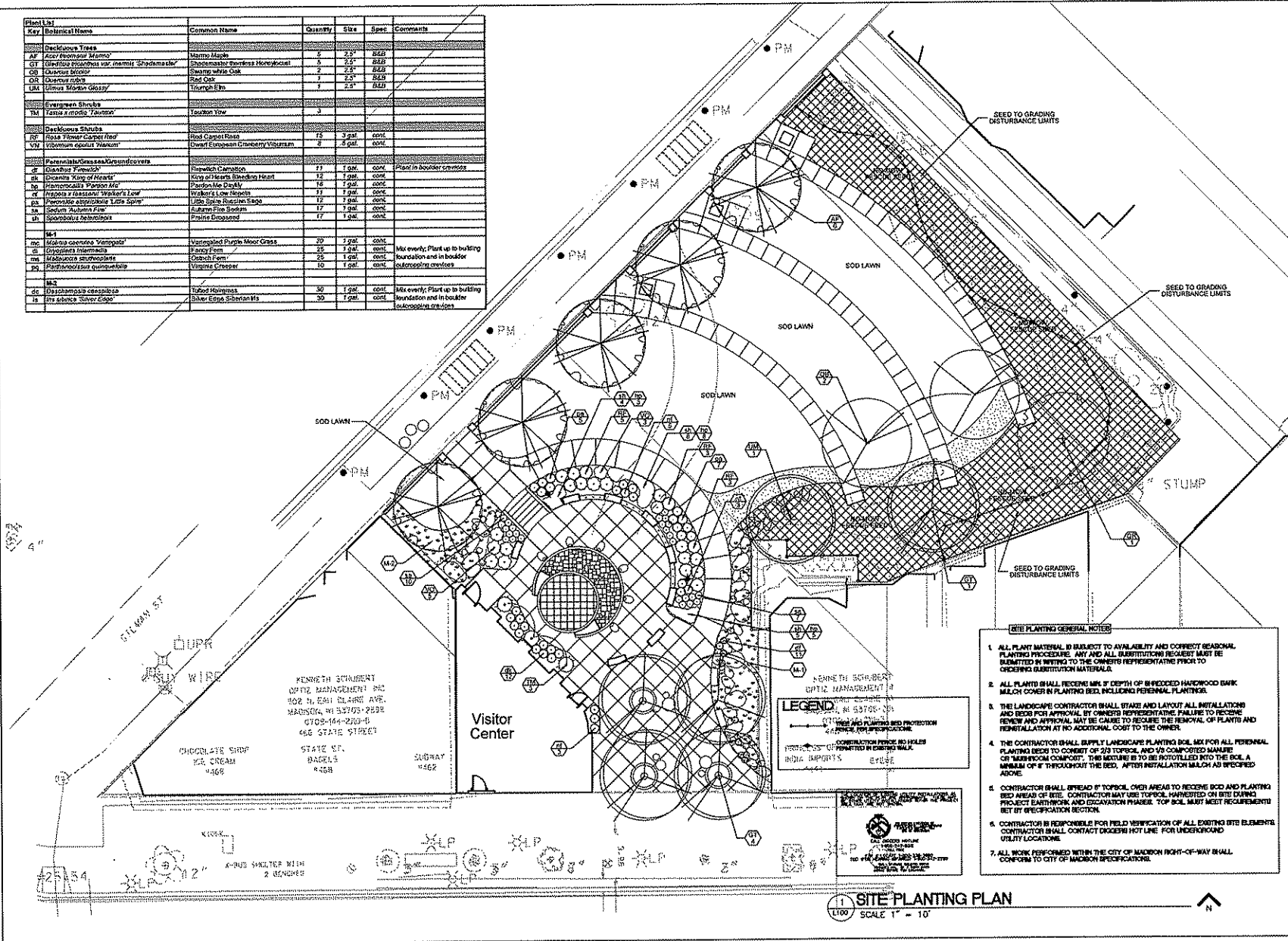
 **1 TECHNOLOGY**
SCALE: 1/4\"/>



 **2 ROOFTOP TECHNOLOGY**
SCALE: 1/4\"/>

MANY EXISTING ELEMENTS LINK PEACE PARK REDEVELOPMENT

Plant List Key	Botanical Name	Common Name	Quantity	Size	Spec.	Comments
Deciduous Trees						
AF	<i>Asier thomsonii</i> Mamm	Mamm Maple	2	2.5'	BAU	
DT	<i>Quercus prinus</i> var. <i>macrocarpa</i> (Shubert)	Chopwood Pinus Hornbeam	3	2.5'	BAU	
OB	<i>Quercus bicolor</i>	Swamp white Oak	2	2.5'	BAU	
OR	<i>Quercus rubra</i>	Red Oak	1	2.5'	BAU	
LR	<i>Vernix floribunda</i> (Mill)	Trumpet Elm	1	2.5'	BAU	
Evergreen Shrubs						
TM	<i>Kalmia latifolia</i> (L.) Pursh	Common Ivy	3			
Deciduous Shrubs						
RF	<i>Rosa blanda</i> (Curtis) Rehd	Red Carpet Rose	15	3 gal.	cont.	
VN	<i>Viburnum cuneatum</i> (Mill) B.S.P.	Dwarf European Cranberry Viburnum	2	3 gal.	cont.	
Perennials/Grasses/Groundcovers						
CF	<i>Cardinalis flammula</i> (L.) Scop.	Firewhitch Cardinalis	11	1 gal.	cont.	Plant in Aqueduct crevices
HL	<i>Hebe x exoniensis</i> (Mill) B.S.P.	King of Hearts Shrubbery Heart	12	1 gal.	cont.	
IS	<i>Impatiens</i> (L.) Watson	Poppy-like Dayly	15	1 gal.	cont.	
LF	<i>Lupinus</i> (L.) DC.	Walker's Low Lupinus	11	1 gal.	cont.	
RS	<i>Rosa rugosa</i> (L.) DC.	Libra Spine Russian Rose	12	1 gal.	cont.	
IS	<i>Isoplexis</i> (L.) DC.	Autumn Fire System	17	1 gal.	cont.	
SH	<i>Shrubbery</i> (L.) DC.	Praline Dropwood	17	1 gal.	cont.	
Misc						
MC	<i>Malva coccinea</i> (Mill) B.S.P.	Variiegated Purple Moor Grass	20	1 gal.	cont.	
IS	<i>Isoplexis</i> (L.) DC.	Fancy Fern	25	1 gal.	cont.	Mix evenly; Plant up to building foundation and in boulevard outcroppings crevices
MC	<i>Malva coccinea</i> (Mill) B.S.P.	Cornish Fern	25	1 gal.	cont.	
VS	<i>Vernix floribunda</i> (Mill) B.S.P.	Virginia Creeper	10	1 gal.	cont.	
Misc						
DC	<i>Dactylis glomerata</i> (L.) DC.	Tallcut Hairgrass	30	1 gal.	cont.	Mix evenly; Plant up to building foundation and in boulevard outcroppings crevices
IS	<i>Isoplexis</i> (L.) DC.	Silver Edge	30	1 gal.	cont.	



Consultants

Elizabeth Link Peace Park Redevelopment
229 W. Gilman Street, Madison, WI



Revision/Date	Date

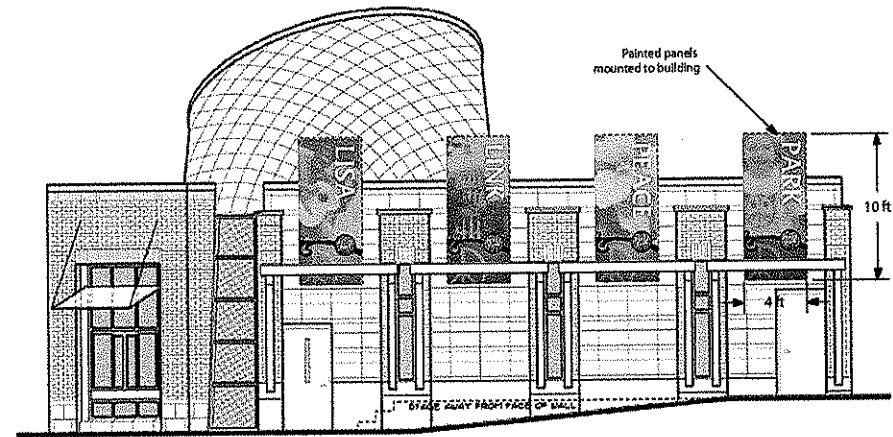
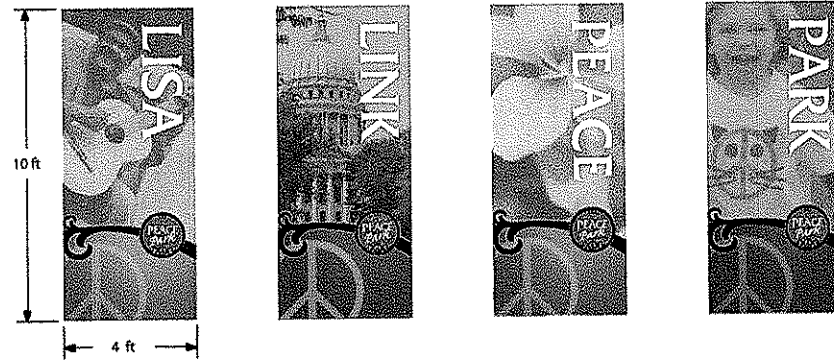
Project No. 6340
Drawn By: MS
Checked By: MS
Date: 01-15-09
Sheet Title:

PLANTING PLAN

Sheet No. **L100**

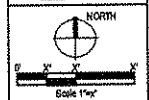
- SITE PLANTING GENERAL NOTES**
1. ALL PLANT MATERIAL IS SUBJECT TO AVAILABILITY AND CORRECT SEASONAL PLANTING PROCEDURES. ANY AND ALL SUBSTITUTION REQUEST MUST BE SUBMITTED BY WRITING TO THE OWNER'S REPRESENTATIVE PRIOR TO ORDERING SUBSTITUTION MATERIALS.
 2. ALL PLANTS SHALL RECEIVE MIN. 1" DEPTH OF BI-FROCCED HARDWOOD BARK MULCH COVER IN PLANTING BEDS, INCLUDING PERENNIAL PLANTINGS.
 3. THE LANDSCAPE CONTRACTOR SHALL STAKE AND LAYOUT ALL INSTALLATIONS AND BEDS FOR APPROVAL BY OWNER'S REPRESENTATIVE. FAILURE TO RECEIVE REVIEW AND APPROVAL MAY BE CAUSE TO REMOVE THE PERENNIAL OR PLANTS AND REINSTALLATION AT NO ADDITIONAL COST TO THE OWNER.
 4. THE CONTRACTOR SHALL SUPPLY LANDSCAPE PLANTING BED MIX FOR ALL PERENNIAL PLANTING BEDS TO CONSIST OF 2/3 TOPSOIL AND 1/3 COMPOSTED MANURE OR MANURE/COMPOST. THE MIXTURE IS TO BE ROTOTILLED INTO THE BEDS A MINIMUM OF 6" THROUGHOUT THE BED. AFTER REINSTALLATION MULCH AS SPEC'D ABOVE.
 5. CONTRACTOR SHALL BROADCAST TOPSOIL OVER AREAS TO RECEIVE BOD AND PLANTING BEDS AHEAD OF SITE. CONTRACTOR MAY USE TOPSOIL HARVESTED ON SITE DURING PROJECT EARLYWORK AND OCCASIONALLY PHASE. TOP SOIL MUST MEET REQUIREMENTS SET BY SPECIFICATION SECTION.
 6. CONTRACTOR IS RESPONSIBLE FOR FIELD VERIFICATION OF ALL EXISTING SITE ELEMENTS. CONTRACTOR SHALL CONTACT DODD'S HOT LINE FOR UNDERGROUND UTILITY LOCATIONS.
 7. ALL WORK PERFORMED WITHIN THE CITY OF MADISON RIGHT-OF-WAY SHALL CONFORM TO CITY OF MADISON SPECIFICATIONS.

SITE PLANTING PLAN
SCALE 1" = 10'



Consultants
 ZD STUDIOS
 ARCHITECTURAL PARTNERS

Elizabeth Link Peace Park Redevelopment
 229 W. Gilman Street, Madison, WI



Issue/Revision	Date

Project No. 6340
 Drawn By JCC
 Checked By JCC
 Date 07-25-09
 Sheet Title

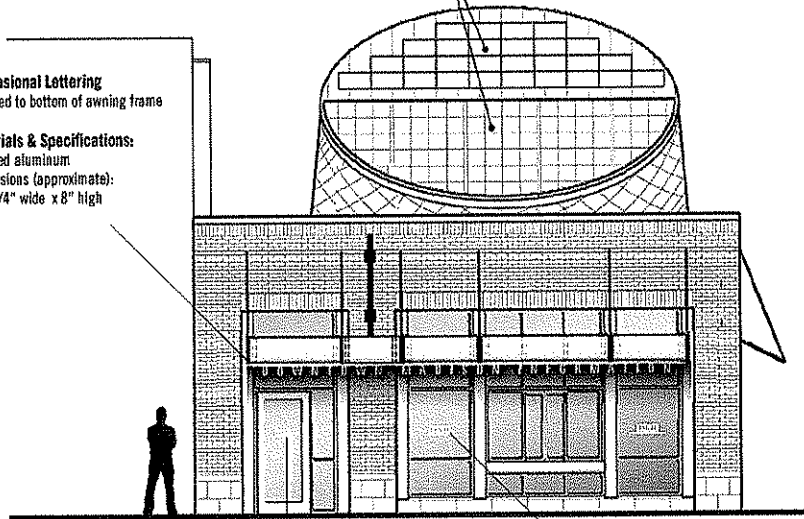
LOGO &
 BANNER CONCEPTS

Sheet No.
S100

Dimensional Lettering
Mounted to bottom of awning frame

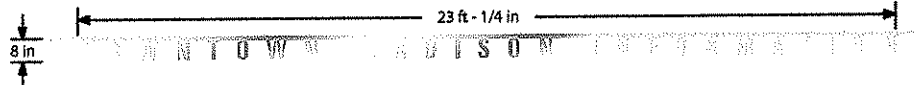
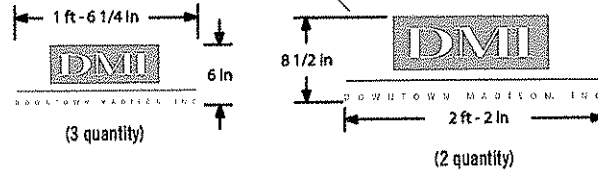
Materials & Specifications:
Brushed aluminum
Dimensions (approximate):
23'- 1/4" wide x 8" high

SOLAR PANELS AND SKYLIGHT
YET TO BE DETERMINED



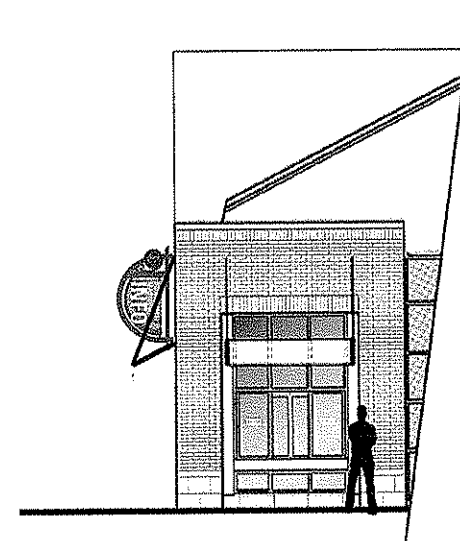
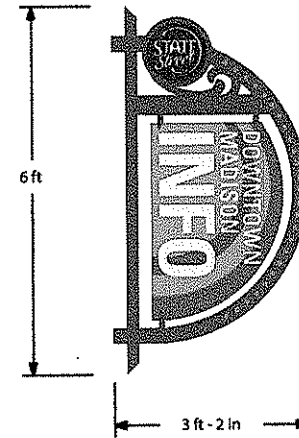
Glass Door/Window Vinyl Graphics:
Located on glass entry door and glass windows

Materials & Specifications:
3M Etched vinyl applied to glass
Logo dimensions are:
26" wide x 8-1/2" high (3 quantity)
21" wide x 11-1/2" high (2 quantity)



Custom Signage
Signage to match existing light post signs on State Street

Materials & Specifications:
Refer to existing light post specs
Dimensions (approximate):
38" wide x 72" high



Elizabeth Link Peace Park Redevelopment
229 W. Gilman Street, Madison, WI

NORTH	
Scale 1/4"	
Issue no./Revision	Date
Project No.	6510
Drawn By	JK
Checked By	JK
Date	07-25-08
Sheet Title	EXTERIOR SIGNAGE CONCEPTS
Sheet No.	S101

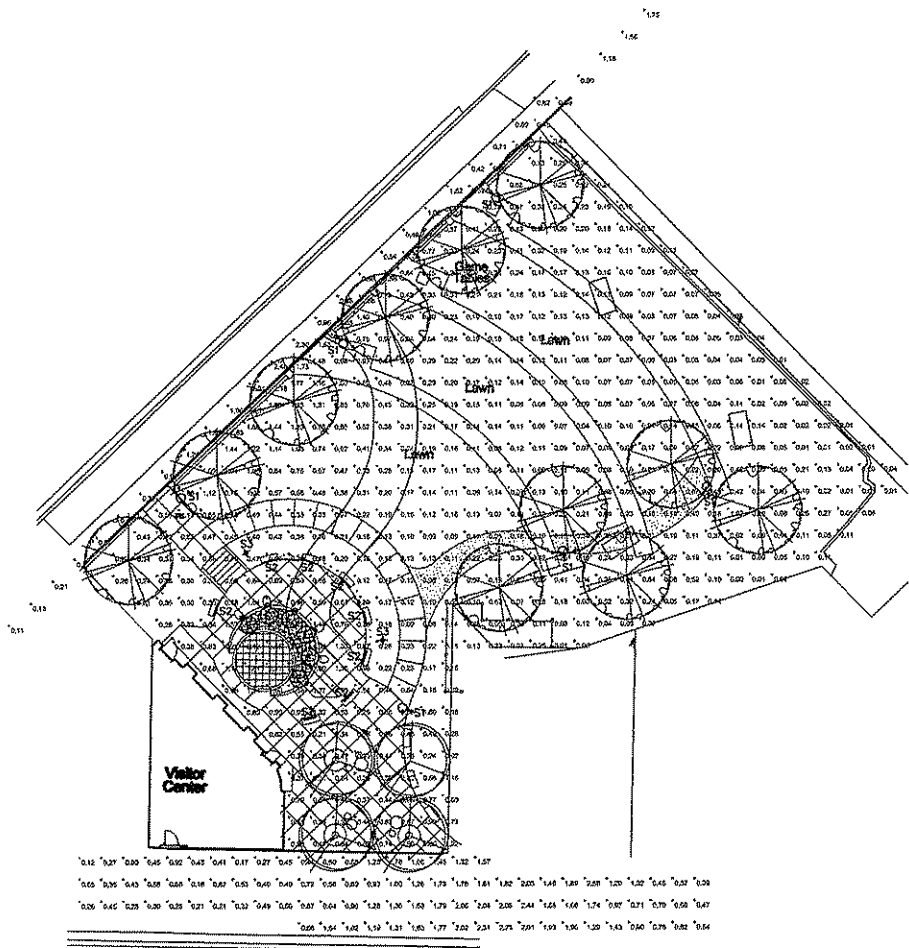
LUMINAIRE SCHEDULE									
Symbol	Leaf	Qty	Category Number	Description	LotNo	File	Lumens	LLF	Watts
01	0		994 Luminaire 8200-500(3)48- 300(2)340H-120- KPL10	STATE STREET CUSTOM LIGHT POLE	35 W T5 CERAMIC METAL HALIDE	State Sheet 0701P JMS	3200	0.72	48
02	24		PH24V14-5	FABRICATED SILVER HOUSING WITH ENGRAVED ELECTRONICS, TRANSALBERT SEMI- CIRCULAR PLASTIC DIFFUSER WITH YELLOW TINT, ONE CIRCUIT BOARD CONTAINING 20 LEDS.	TWENTY-THREE WHITE LIGHT EMITTING DIODES (LEDS) INPUT TO ACCU-SCAN-41-04-2000 POWER SUPPLY. LAMP INFORMATION PROVIDED BY CLIENT.	PH24V14- 45Sec	29	0.95	44
03	5		OneUnit 6 Model 115-000104- 00	CAST METAL HOUSING WITH SILVER PAINTED GENERAL INTERIOR, FINISH, PROTECTED FLAT GLASS LENS, ONE CIRCUIT BOARD CONTAINING 18 LEDS AND OPTICAL ASSEMBLY.	EIGHTY-EIGHT LIGHT EMITTING DIODES (LEDS) - GREEN, 5 GREEN, 5 BLUE, EACH LED HAS A CONICAL PLASTIC REFRACTOR ENCOMPASSING THE LAMP. VERTICAL BASE- UP POSITION. INPUT TO SUPPLY END OF THE 60 FOOT POWER CORD LEADING TO THE LED ASSEMBLY.	ColorMaster S	118	1.00	25.4
710	5		COLONELASTE Model 115-000104- 00	CAST METAL HOUSING WITH SILVER PAINTED GENERAL INTERIOR, FINISH, PROTECTED FLAT GLASS LENS, ONE CIRCUIT BOARD CONTAINING 18 LEDS AND OPTICAL ASSEMBLY. ALL 18 LEDS ON FOR THIS TEST.	EIGHTY-EIGHT LIGHT EMITTING DIODES (LEDS) - 2X RED, 2X GREEN, 5X BLUE, EACH LED HAS A CONICAL PLASTIC REFRACTOR ENCOMPASSING THE LAMP. HORIZONTAL POSITION. INPUT TO SUPPLY END OF THE 60 FOOT POWER CORD LEADING TO THE LED ASSEMBLY.	ColorMaster S	214	1.00	25.3
	A	0	AR07500000000000	ARCHITECTURE OFFICE LUMINAIRE ONE-COAST ALUM HOUSING & LENS FRAME FLAT GLASS ONE- CAST ALUM REFLECTOR SHELL MANUFACTURED SPECIAL PANELS	150 W HPS 615 CLEAR MOULD BASE HORIZONTAL POSITION TEST RATED AT 10000 INITIAL LUMENS	AR07500000 S	150000	0.76	100

STATISTICS					
Description	Symbol	App	Min	Max	Avg/Std
Median Sidewalk	+	1.02 ft	2.48 ft	0.11 ft	22.51
Link Link Spv	-	0.27 ft	2.65 ft	0.05 ft	N/A
State Street Sidewalk	+	1.02 ft	2.56 ft	0.02 ft	20.71

POWER DENSITY STATISTICS				
Name	# Luminaires	Total Watts	Area	Density
Link Link Sidewalk Median	20	546.20 W	1537.41 W	0.36 W/ft ²

LIGHTING CONTROL

Luminaires Type 01 and 02 will be controlled via a time-schedule programmed for safety and security. Type 03, 04 and 05 will be controlled via an environmental dimming and occupancy sensor. A lighting control system located within the building's control stand over ride will be available for special events.



1 SITE - LIGHTING PHOTOMETRICS

**PRELIMINARY
NOT FOR
CONSTRUCTION**

SITE -
PHOTOMETRICS

Sheet No.
EL100

ELIZABETH LINK PEACE PARK
PEACE PARK
1001 W. PEACE
MADISON, WI 53704
TEL: 608.263.2000
FAX: 608.263.2000
WWW.ELIZABETHLINKPEACE.PK.COM

Consultants

Elizabeth Link Peace Park Redevelopment
229 W. Gilman Street, Madison, WI

INSURANCE DIVISION DATE

Project No. 6340
Drawn By JPM
Checked By
Date 07-15-09
Sheet Title