









CARROLL ST WITH SIMPLIFIED BASE DESIGN AND HORIZONTAL MIDDLE
22 S CARROLL ST • 01-21-15

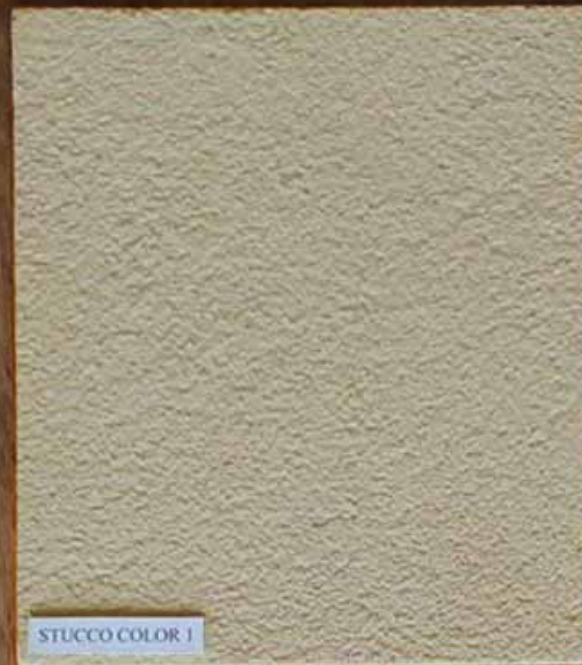




22 SOUTH CARROLL STREET



LIMESTONE 1



STUCCO COLOR 1



MEDIUM BRONZE WINDOW FRAMES



EXISTING BRICK



DARK BRONZE WINDOW FRAMES



LIMESTONE 2



MAIN ENTRY DOOR METAL



STUCCO COLOR 2



GRANITE 1



AWNING FABRIC





22 S. Carroll Street



The Hotel – Existing Images



The Corner of Carroll and Main

The Hotel – Existing Images

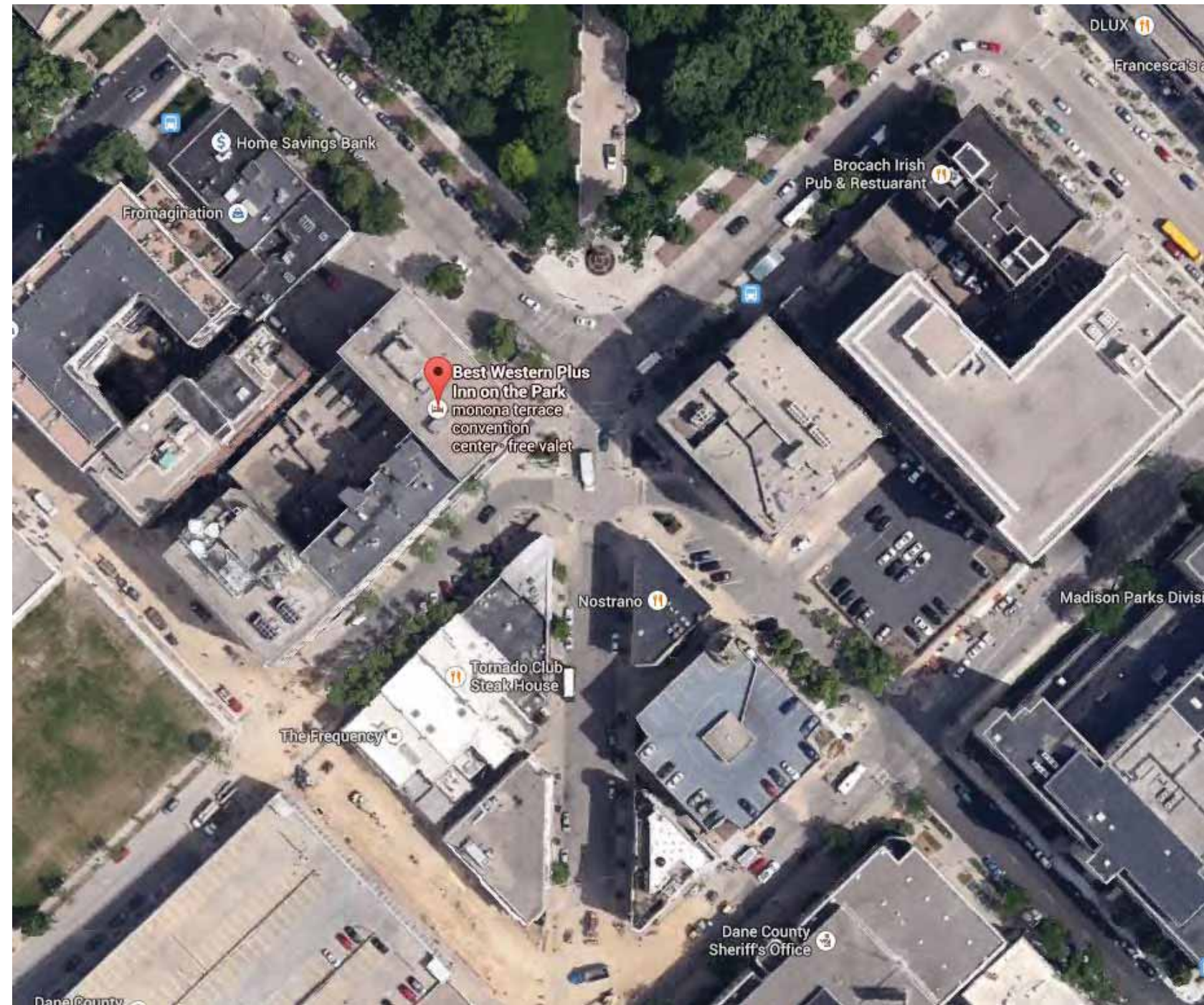


Main Street at adjacent building

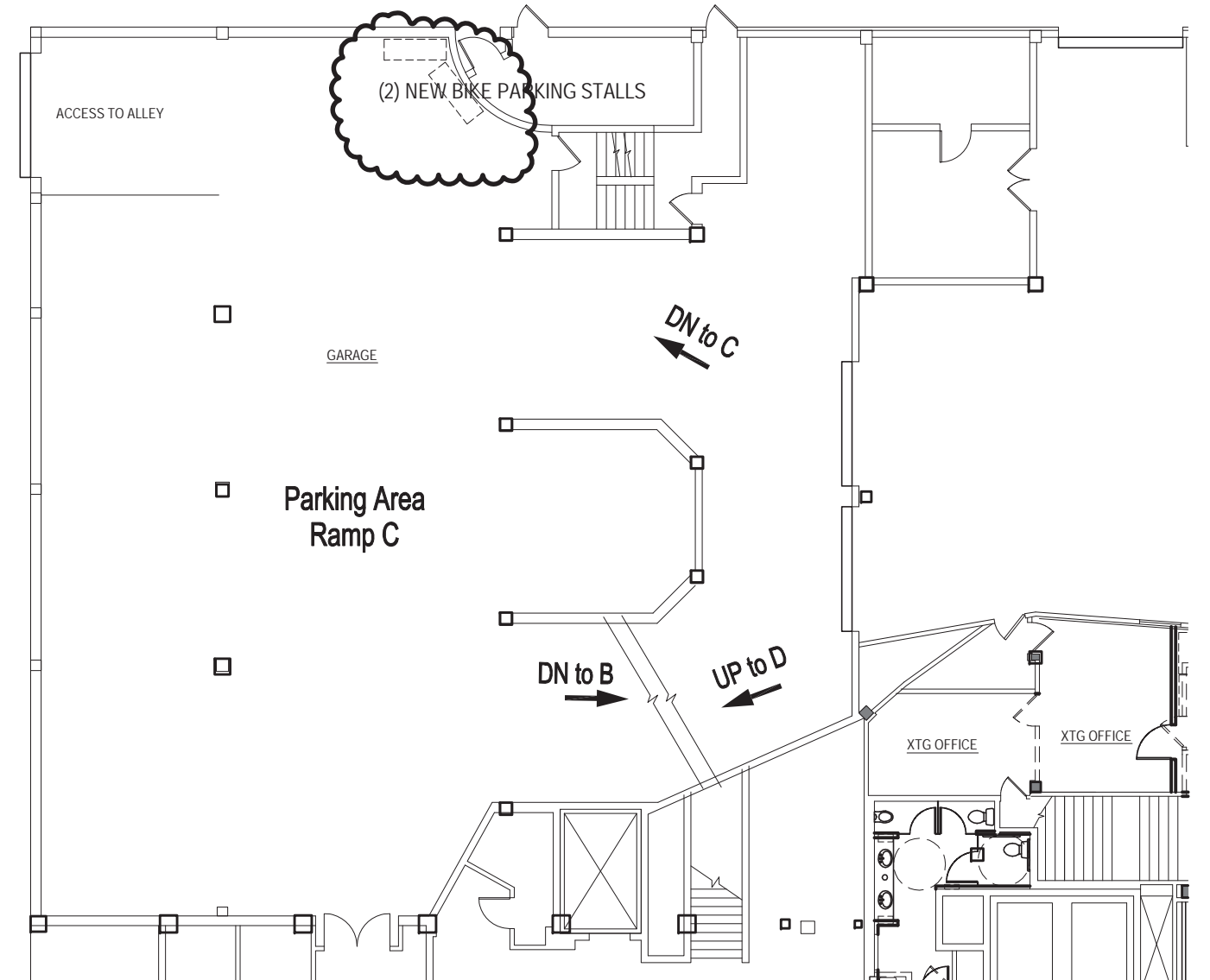
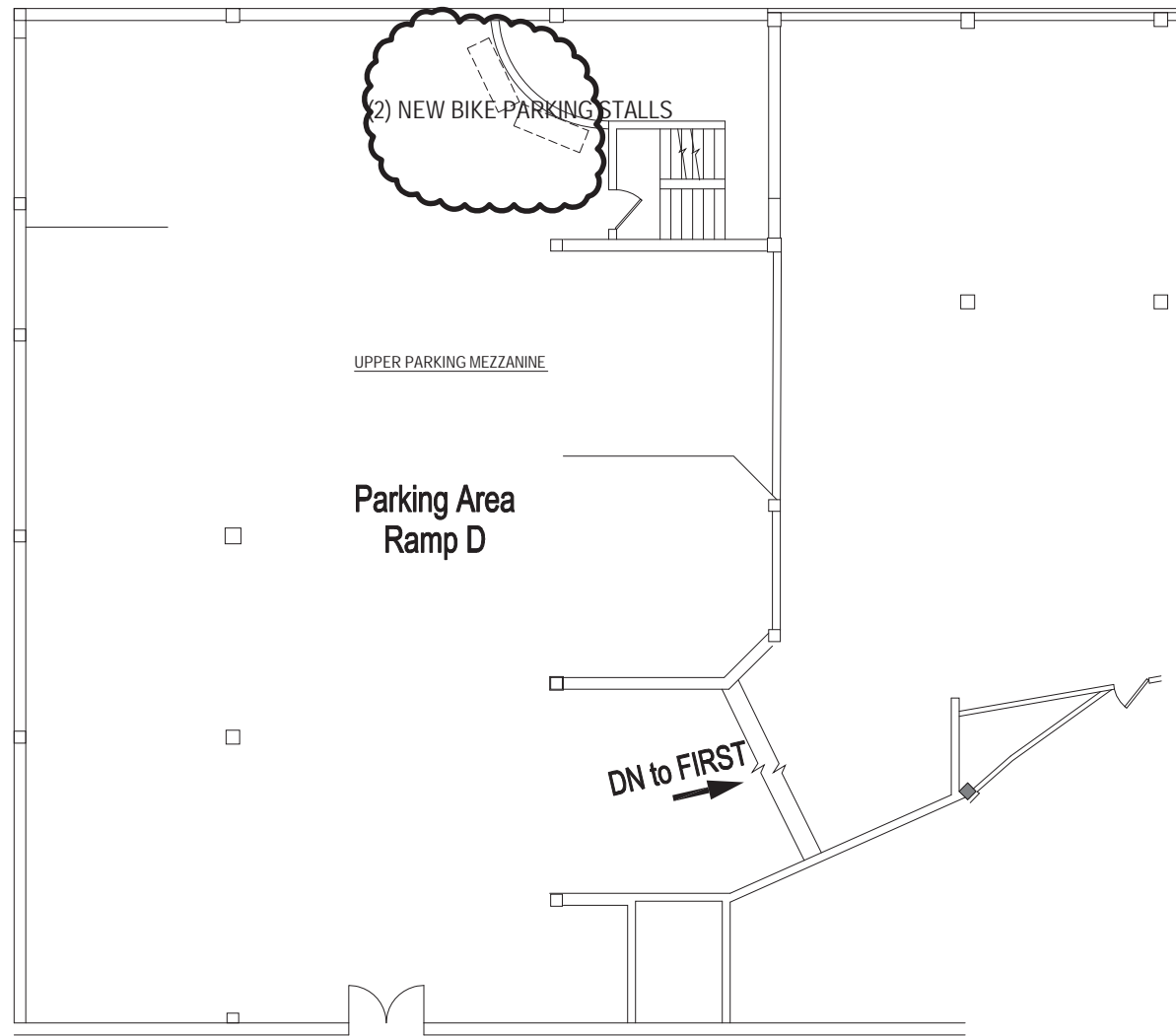


The Corner of Hamilton and Main

The Hotel – Context



The Hotel – Locator Map
Oriented North Up





Luminaire Schedule					
Qty	Label	Arrangement	Total Lamp Lumens	LLF	Description
7	A	SINGLE	2649	0.900	LUMARK + XTOR3A
3	B1	SINGLE	6831	0.794	MANNING + DE-143-2F27-10P75-120-R1-WH (SHORTER)
5	B2	SINGLE	6831	0.794	MANNING + DE-144-2F39-10P75-120-R1-WH (LONGER)

Calculation Summary							
Label	CalcType	Units	Avg	Max	Min	Avg/Mn	Max/Mn
BALCONY	Illuminance	Fc	12.30	86.0	0.4	30.75	215.00
FRONT SIDEWALK	Illuminance	Fc	1.03	3.7	0.2	5.15	18.50
REAR DRIVE	Illuminance	Fc	3.11	9.0	0.1	31.10	90.00

PARK HOTEL

EXTERIOR LIGHTING

DATE
JAN. 21, 2014

SCALE
1/8" = 1'-0"

SHEET NUMBER
E1

Sentinel

Sentinel stands guard with a white opal acrylic cylinder surrounded by solid aluminum, stainless steel or PVD bars. Glass bottom lens features a blue, amber, or white acrylic insert for interesting color effects. Sealed backplate with gasketing for easy installation.

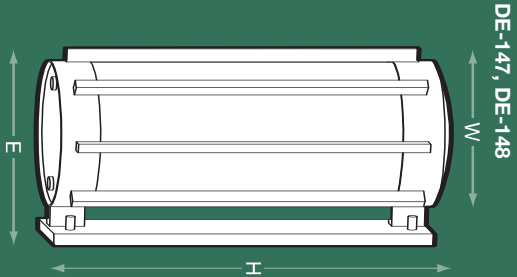
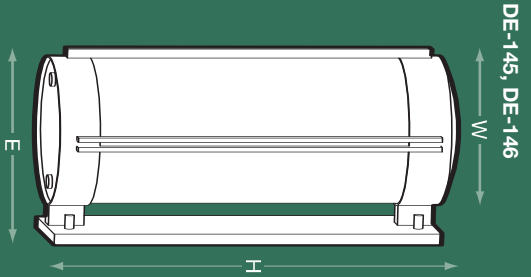
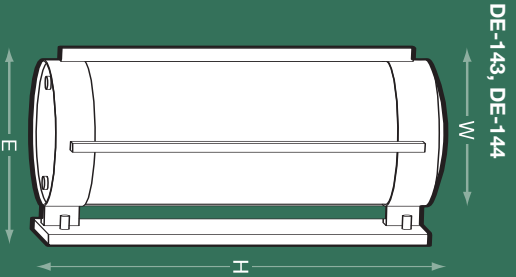
PICTURED:
DE-147-PP(BK)-BS-2N60/1QP75-120-WH-CB

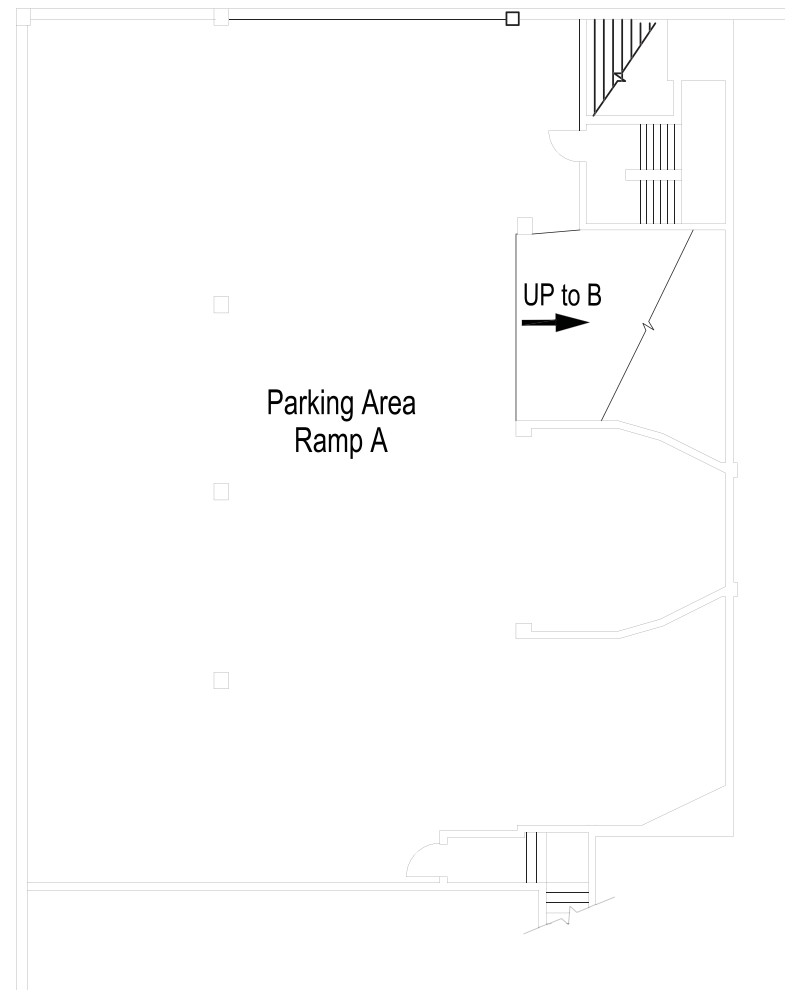


SENTINEL EXTERIOR												
FIXTURE NO.	DIMENSIONS			FINISHES		LAMPING	VOLTAGE	DIFFUSER	DOWNLIGHT TRIM	OPTIONS		
	H	W	E	FRAME	BARs							
DE-143	23"	10"	12"	PP	BS, PP PVD	2N60/1QP75 2F27/1QP75	120 277	WH	AM, CB, WH	FU, PC		
DE-144	26.5"	12"	14"	PP	BS, PP PVD	2N60/1QP75 2F39/1QP75	120 277	WH	AM, CB, WH	FU, PC		
DE-145	23"	10"	12"	PP	BS, PP PVD	2N60/1QP75 2F27/1QP75	120 277	WH	AM, CB, WH	FU, PC		
DE-146	26.5"	12"	14"	PP	BS, PP PVD	2N60/1QP75 2F39/1QP75	120 277	WH	AM, CB, WH	FU, PC		
DE-147	23"	10"	12"	PP	BS, PP PVD	2N60/1QP75 2F27/1QP75	120 277	WH	AM, CB, WH	FU, PC		
DE-148	26.5"	12"	14"	PP	BS, PP PVD	2N60/1QP75 2F39/1QP75	120 277	WH	AM, CB, WH	FU, PC		

Fluorescent ballasts rated to -22°F.

Specify two digit color suffix with "PP" and "PVD" finish option.
See page 53.





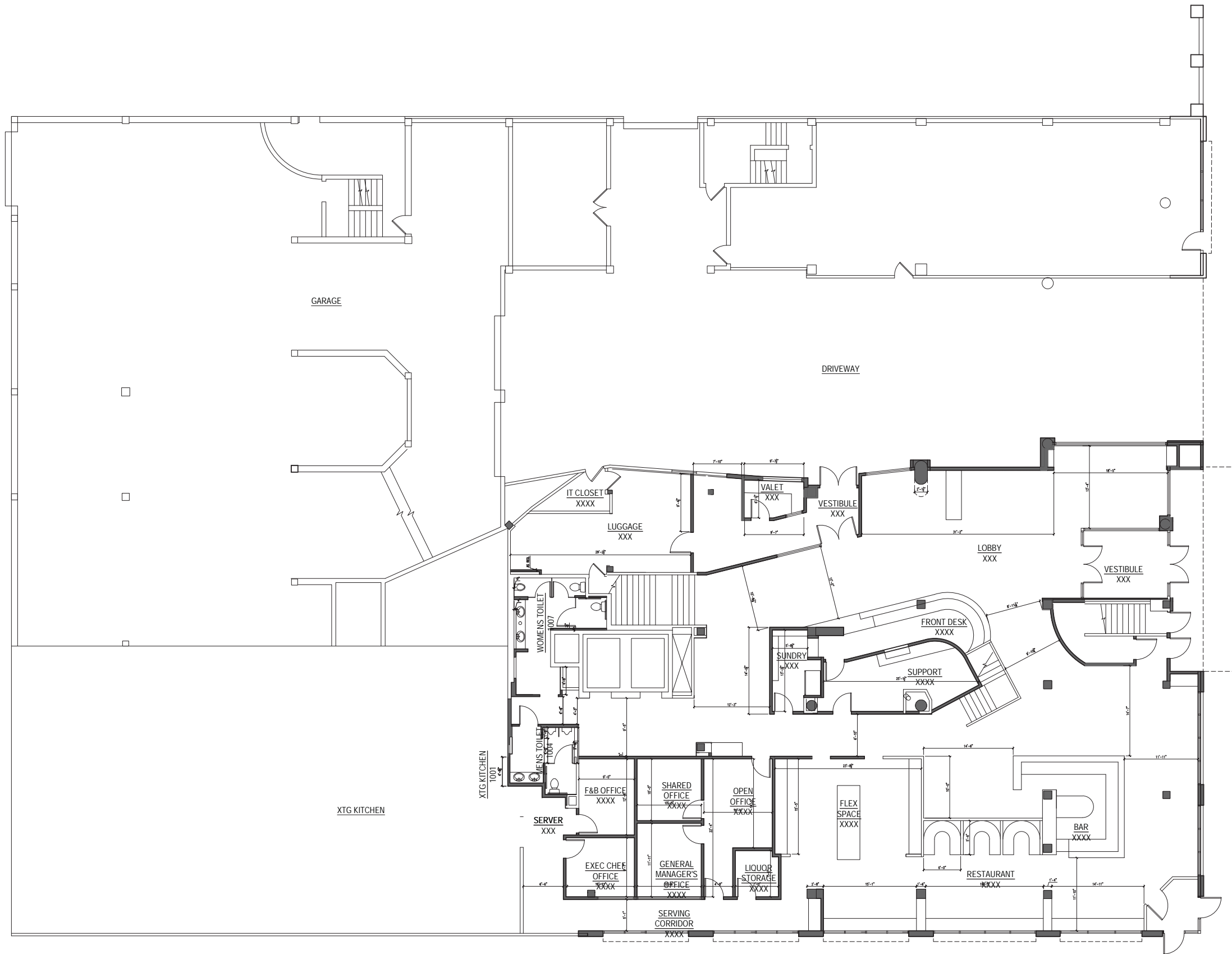
LOWER
PARKING

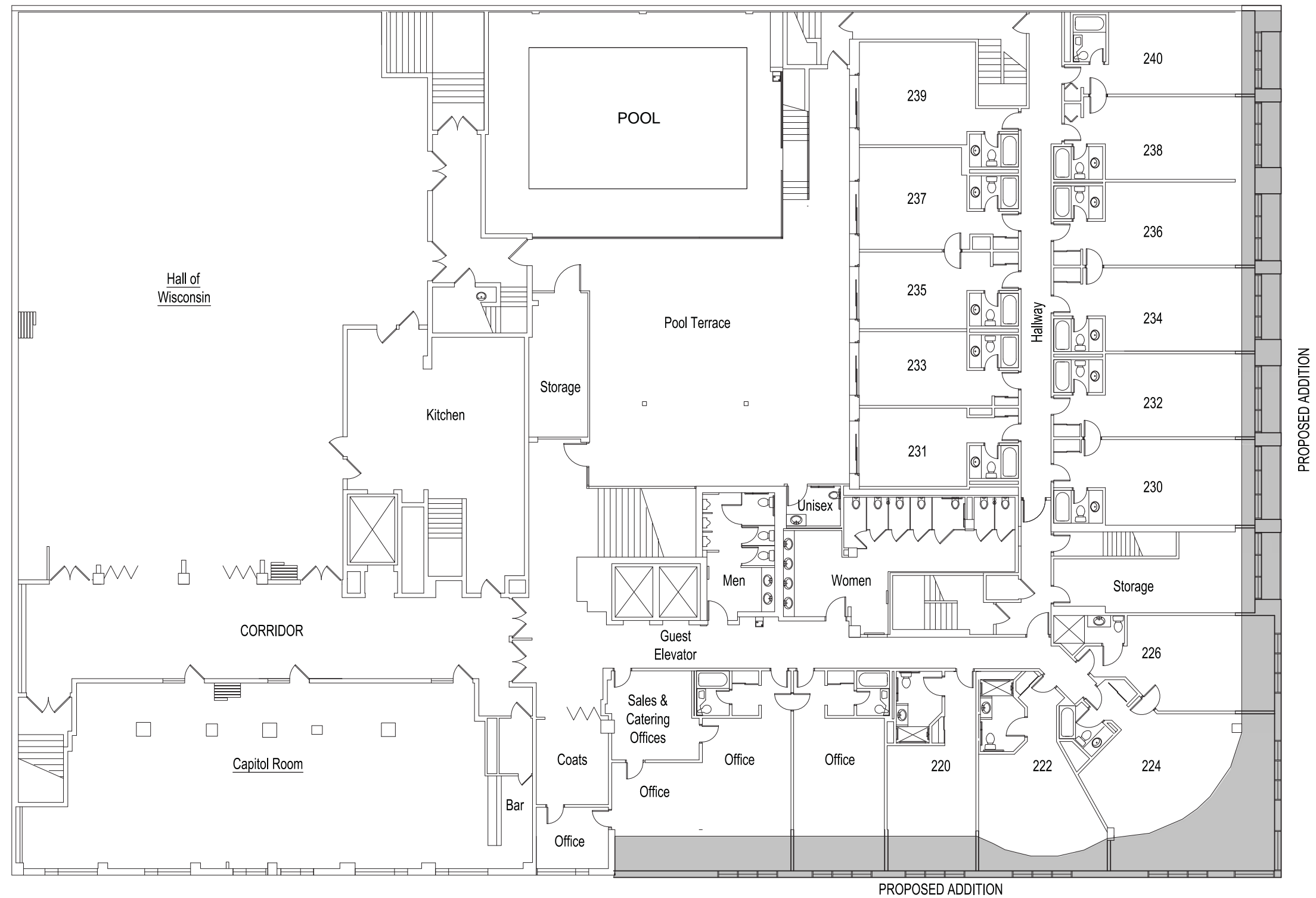
0' 4' 8' 16'
1/8" = 1'-0"

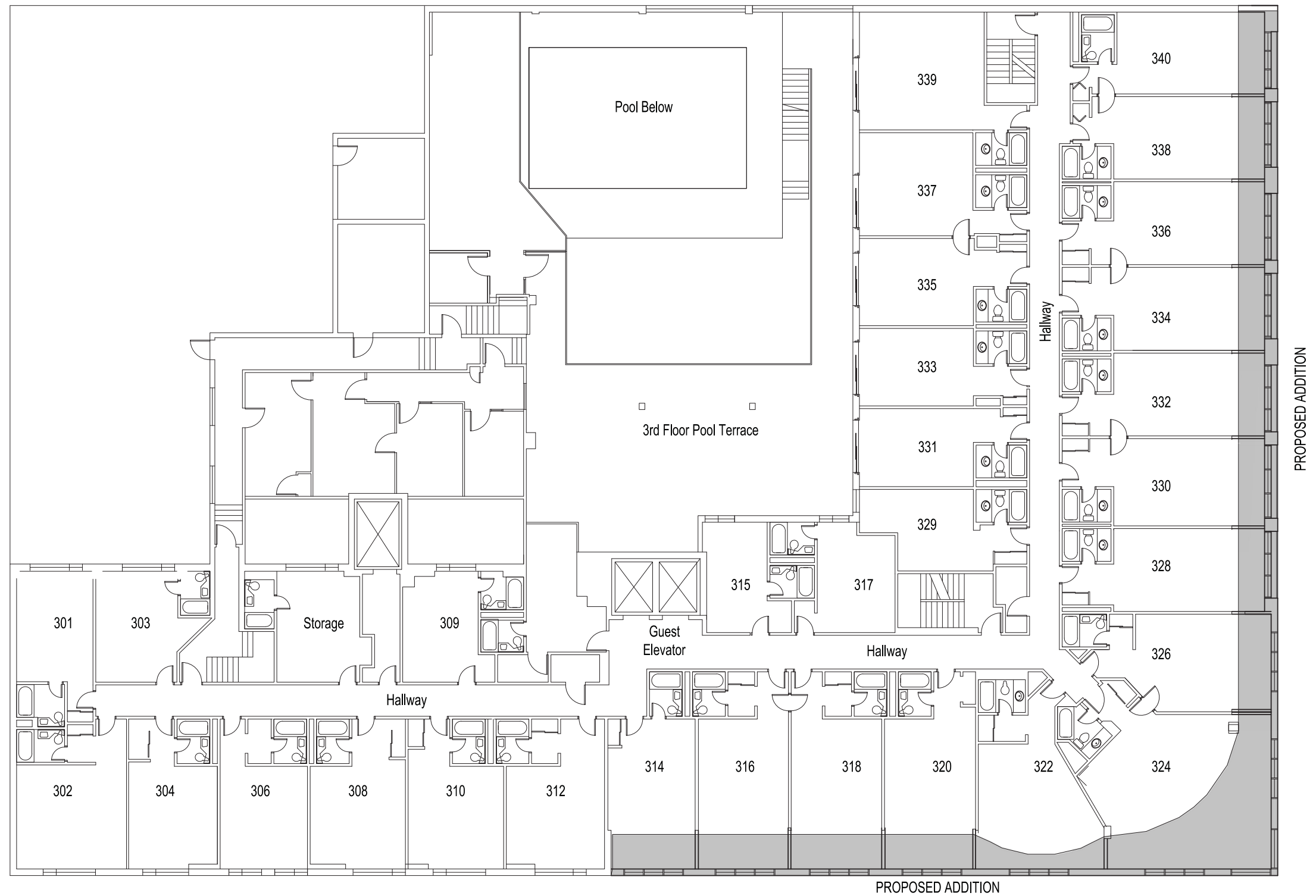


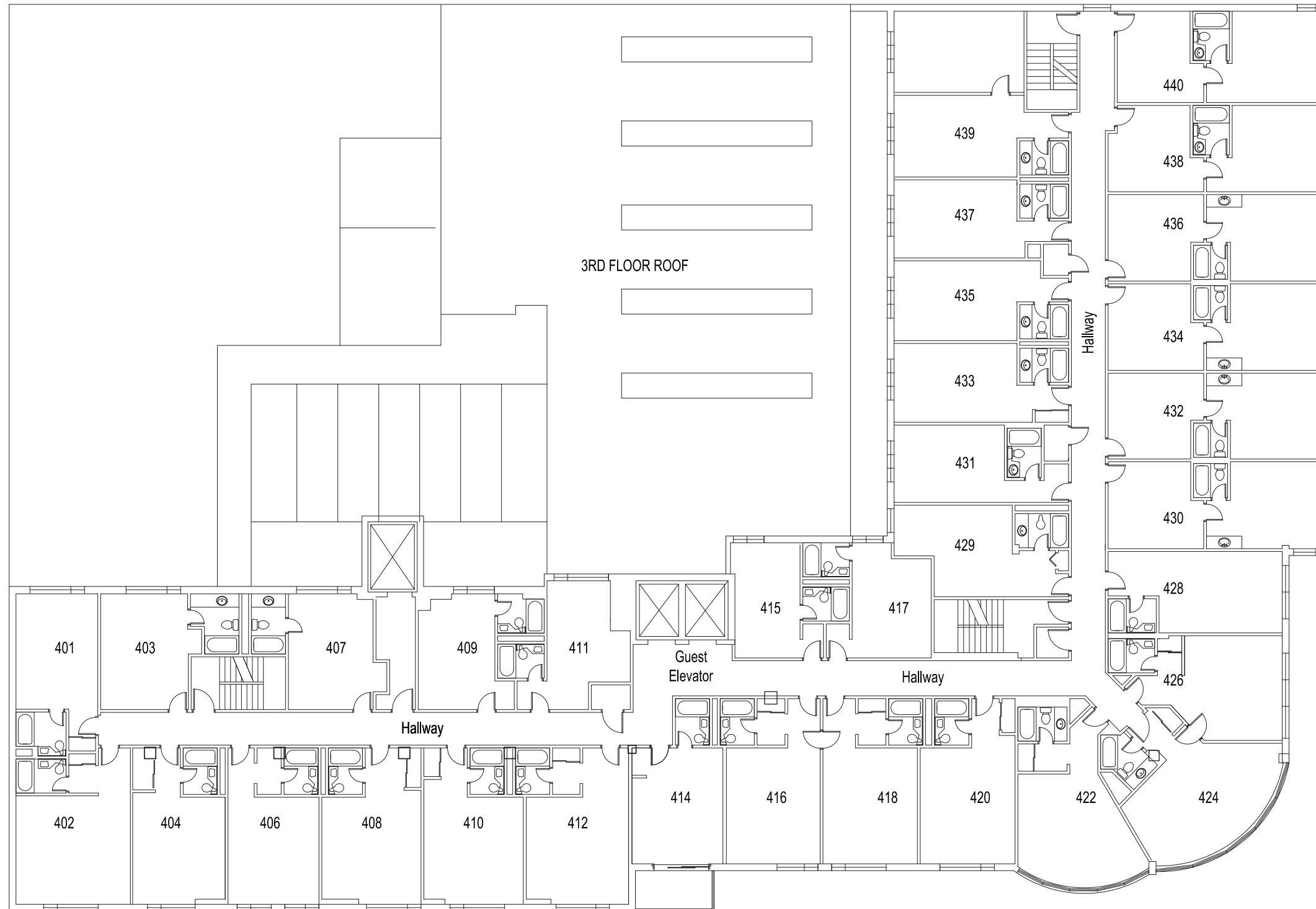
FOUNDERS LEVEL &
PARKING

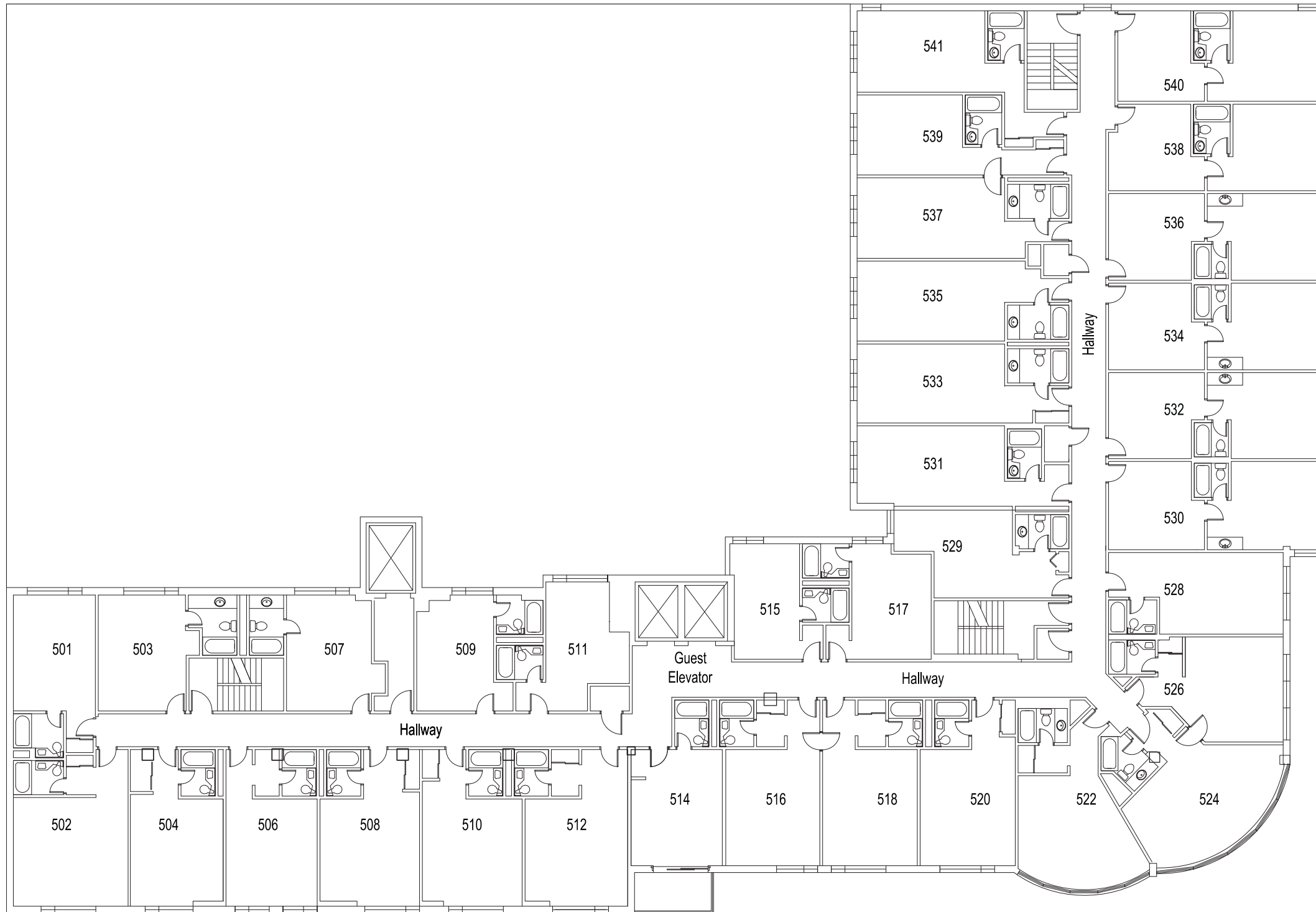
0' 4' 8' 16'
1/8" = 1'-0"

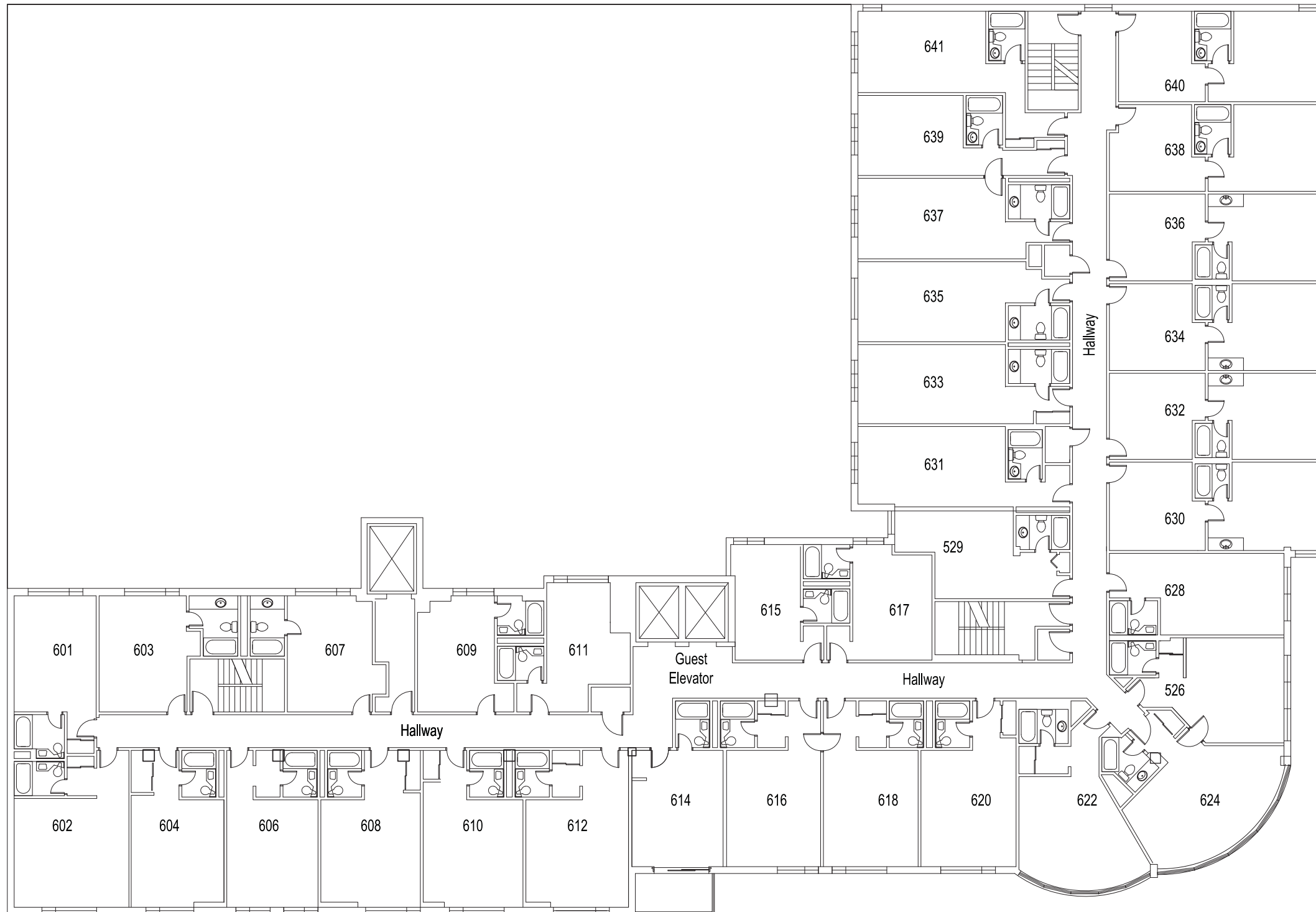


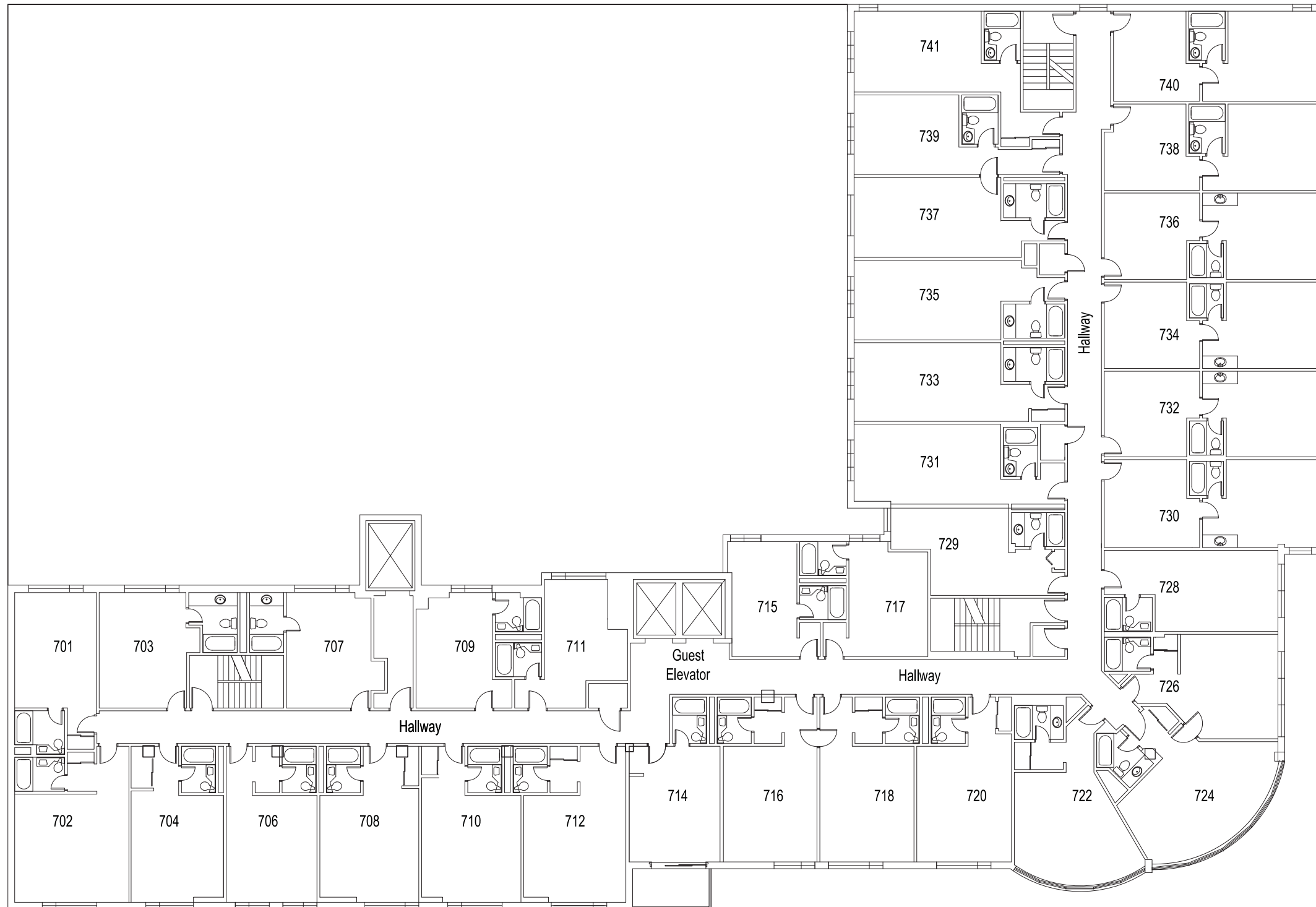


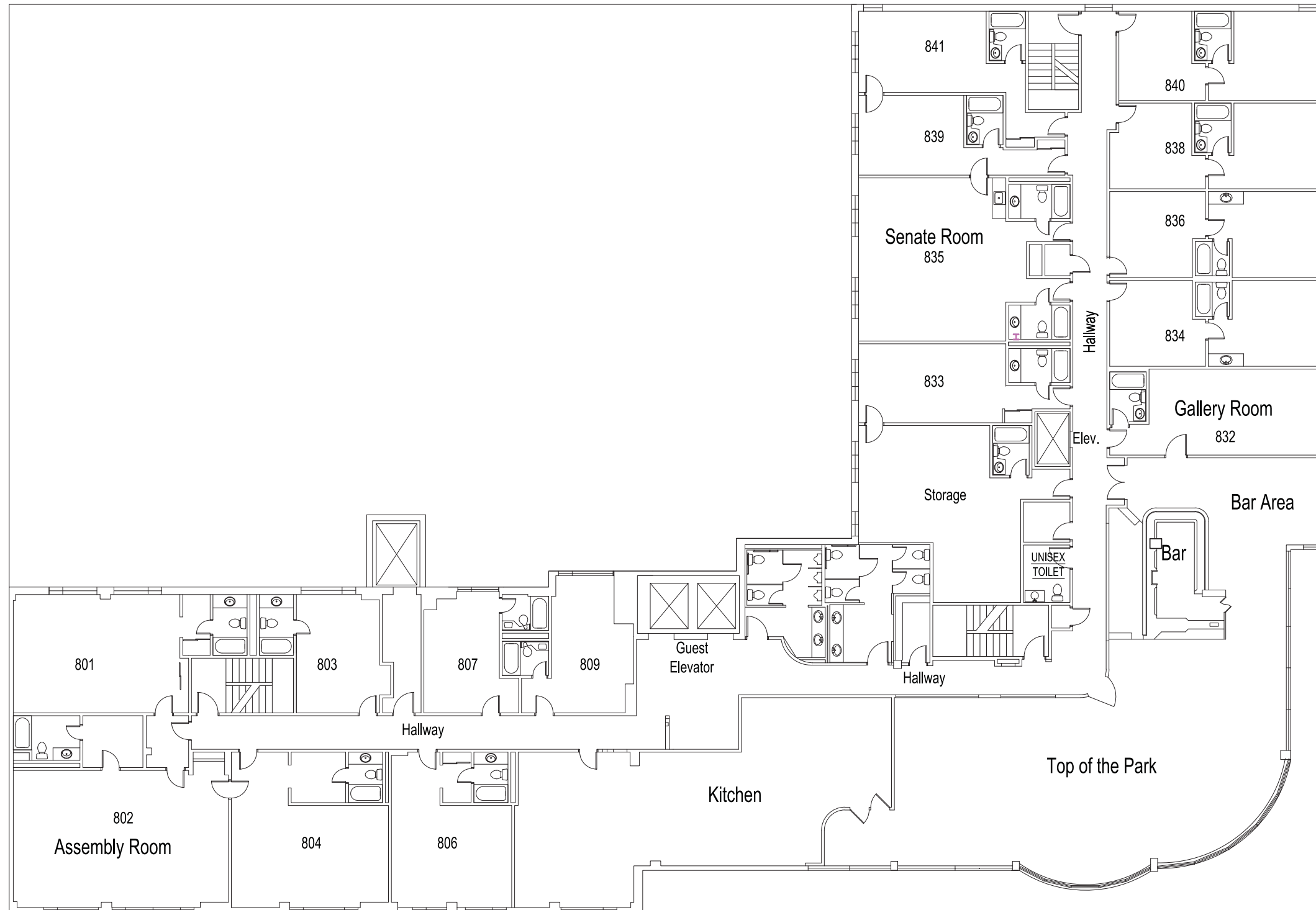


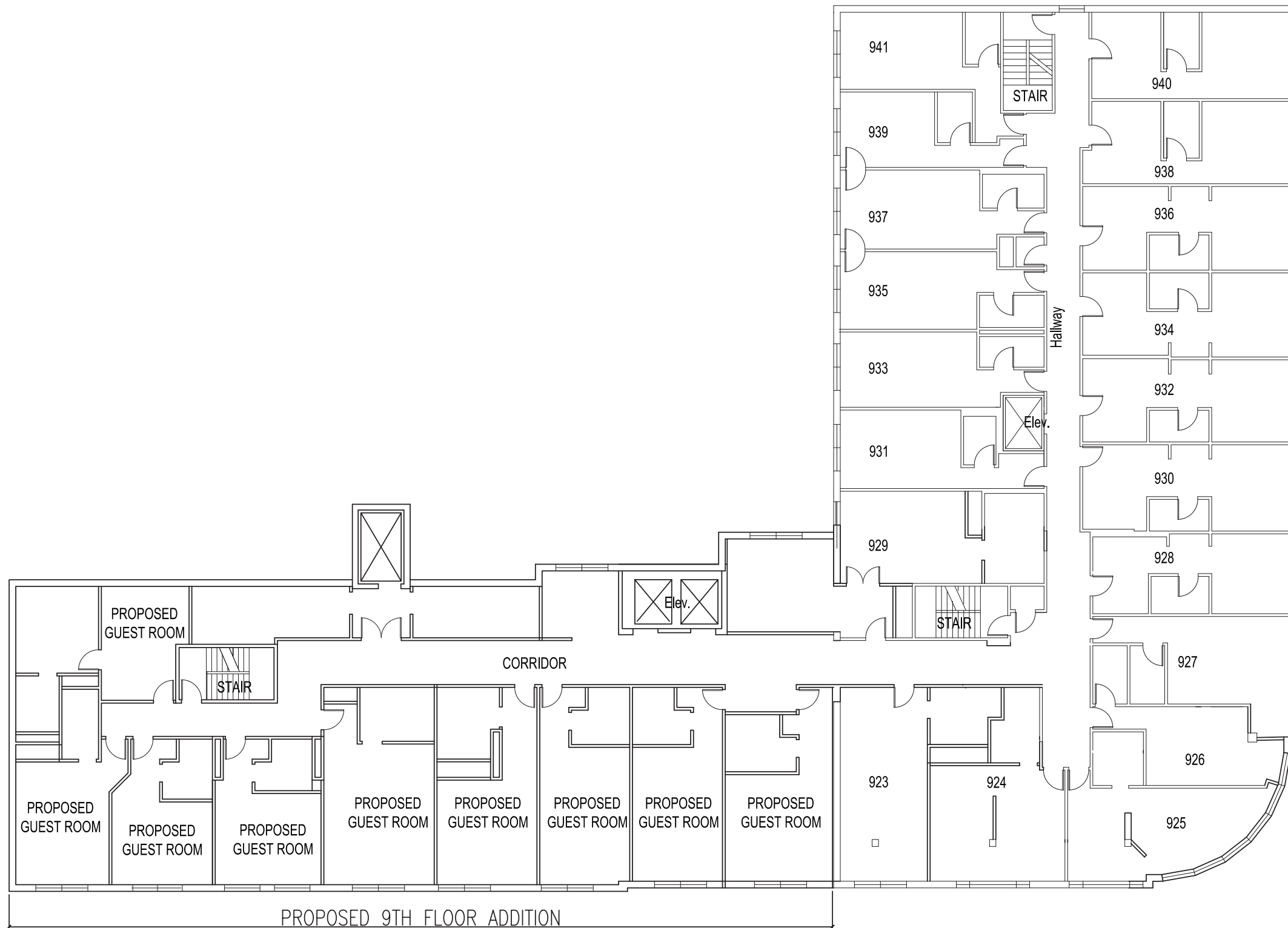


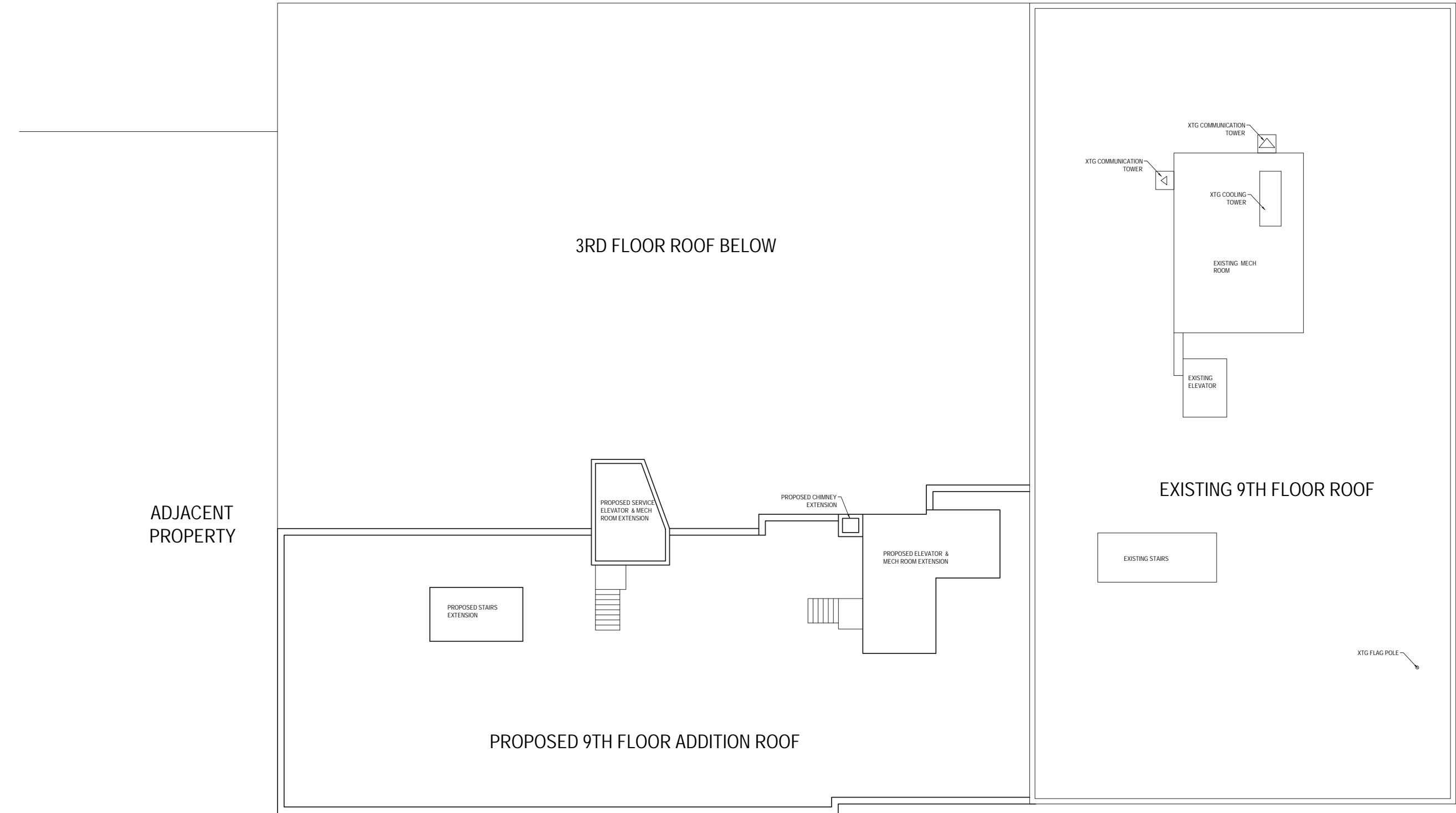














Reservation View
 Sea Level = 1032.8'
 Arch = 209.51'
 City Datum = 187.2'
 Mech Penthouse
 Arch = 208.25'
 Sea Level = 1031.54'

Arch = 197.83'
 Sea Level = 1021.12'

Arch = 187.5'
 Sea Level = 1010.79'

Arch = 174.83'
 Sea Level = 998.12'

Arch = 164.33'
 Sea Level = 987.62'

Arch = 153.83'
 Sea Level = 977.12'

Arch = 143.33'
 Sea Level = 966.62'

Arch = 131.83'
 Sea Level = 955.12'

Arch = 122.08'
 Sea Level = 945.37'

Arch = 111.25'
 Sea Level = 934.54'

Arch = 100.00'
 Sea Level = 923.29'
 City Datum = 77.69'



KEY NOTES

- (A) STUCCO-COLOR 1 -XXX
- (B) STUCCO-COLOR 2 -XXX
- (C) EXISTING BRICK
- (D) LIMESTONE-1 (HONED)
- (E) LIMESTONE -2 (LEVEE LEDGE)
- (F) GRANITE-1 (BLACK)
- (G)
- (H) DARK AND MED BRONZE ALUM WINDOW SYSTEM (OPERABLE)
- (I) DARK AND MED BRONZE ALUM STOREFRONT SYSTEM
- (J) METAL ACCENT SET IN STONE MED BRONZE
- (K) FABRIC AWNING
- (L) ALUMIN RAILING
- (M) BRASS ENTRY DOOR
- (N) 48" TALL LED LIGHT FIXTURE
- (O) 24" TALL LED LIGHT FIXTURE
- (P) FLAG POLES
- (Q) ALUMIN SILL (MED BRONZE)
- (R) EXISTING WALL LOUVERS
- (S) EXISTING WALL PACK LIGHT
- (T) CLAD BRACKET
- (U) CABLE SUPPORTS
- (V) METAL CLAD TRIM
- (W) SIGNAGE
- (X) METAL CORNICE (MED BRONZE)
- (Y) METAL CLAD CANOPY (MED BRONZE)





KEY NOTES

- A STUCCO-COLOR 1 -XXX
- B STUCCO-COLOR 2 -XXX
- C EXISTING BRICK
- D LIMESTONE-1 (HONED)
- E LIMESTONE -2 (LEVEE EDGE)
- F GRANITE-1 (BLACK)
- G
- H DARK AND MED BRONZE ALUM WINDOW SYSTEM (OPERABLE)
- I DARK AND MED BRONZE ALUM STOREFRONT SYSTEM
- J METAL ACCENT SET IN STONE MED BRONZE
- K FABRIC AWNING
- L ALUMN RAILING
- M BRASS ENTRY DOOR
- N 48" TALL LED LIGHT FIXTURE
- O 24" TALL LED LIGHT FIXTURE
- P FLAG POLES
- Q ALUMN SILL (MED BRONZE)
- R EXISTING WALL LOUVERS
- S EXISTING WALL PACK LIGHT
- T CLAD BRACKET
- U CABLE SUPPORTS
- V METAL CLAD TRIM
- W SIGNAGE
- X METAL CORNICE (MED BRONZE)
- Y METAL CLAD CANOPY (MED BRONZE)



