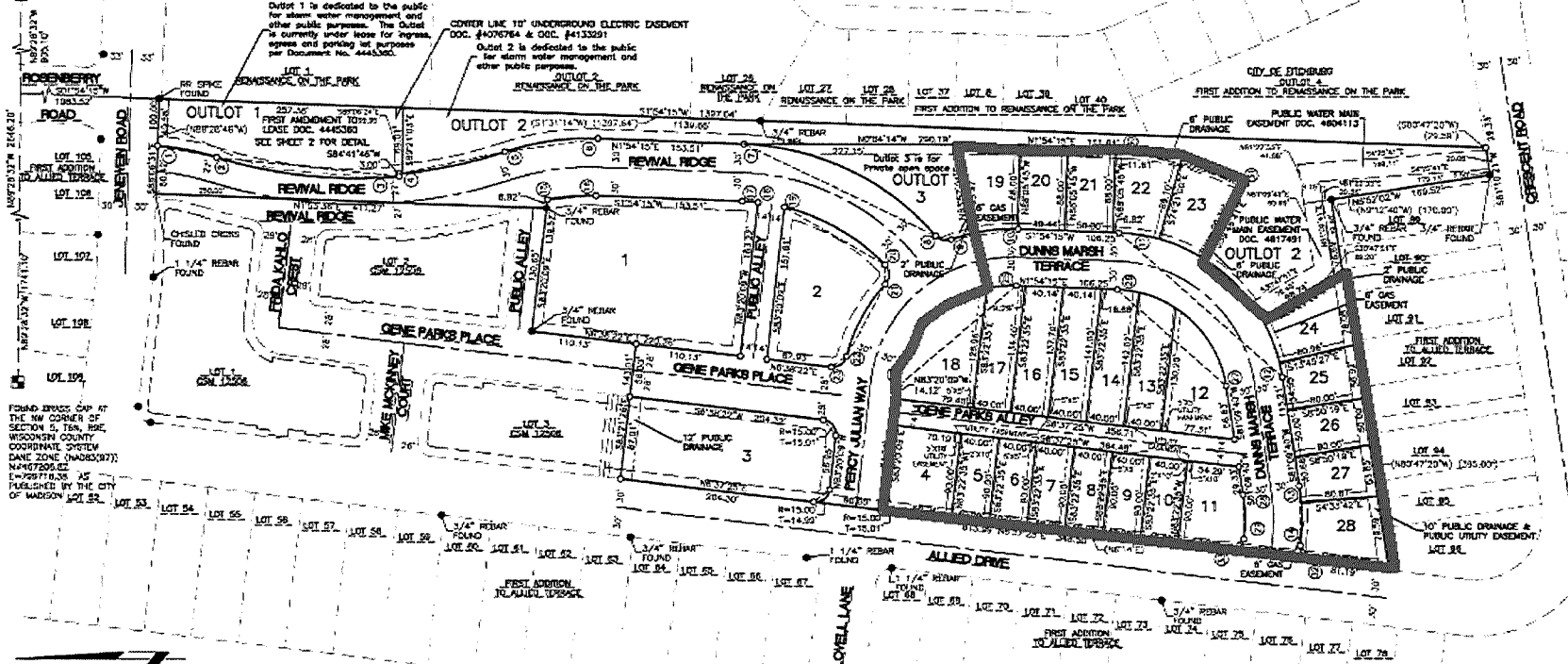


THIS INSTRUMENT WAS DRAFTED BY FRANCIS R. THORNDYK
 FOUND BRASS CAP AT THE S.
 1/4 CORNER OF SECTION 5, T6N,
 R9E, WISCONSIN COUNTY
 COORDINATE SYSTEM DANE ZONE
 (NAD83/87) N=487182.03
 E=402834.7 AS PUBLISHED BY
 THE CITY OF MADISON.

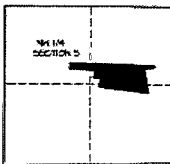
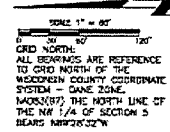
MOSAIC RIDGE

TR-C3

LOT 4, CERTIFIED SURVEY MAP 12506, 'LANDS DEDICATED TO THE PUBLIC', FIRST ADDITION TO ALLIED TERRACE, BEING PART OF THE NE 1/4, SW 1/4 AND SE 1/4 OF THE NW 1/4 OF SECTION 5, T6N, R9E, IN THE CITY OF MADISON, DANE COUNTY, WISCONSIN



FOUND BRASS CAP AT THE NW CORNER OF SECTION 5, T6N, R9E, WISCONSIN COUNTY COORDINATE SYSTEM DANE ZONE (NAD83/87) N=487182.03 E=402834.7 AS PUBLISHED BY THE CITY OF MADISON LOT 28.



LOCATION PLAN
 SCALE: 1"=100'
 PART OF THE NE 1/4, SE 1/4 AND SW 1/4 OF THE NW 1/4 OF SECTION 5, T6N, R9E, CITY OF MADISON, DANE COUNTY, WI

LOT NO.	LOT AREA
1	33,890 SQ. FT.
2	14,415 SQ. FT.
3	18,810 SQ. FT.
4	4,271 SQ. FT.
5	3,650 SQ. FT.
6	2,680 SQ. FT.
7	3,680 SQ. FT.
8	3,680 SQ. FT.
9	3,680 SQ. FT.
10	3,680 SQ. FT.
11	2,710 SQ. FT.
12	6,848 SQ. FT.
13	2,485 SQ. FT.
14	5,888 SQ. FT.
15	2,374 SQ. FT.
16	3,442 SQ. FT.
17	6,268 SQ. FT.

LOT NO.	LOT AREA
18	7,346 SQ. FT.
19	3,006 SQ. FT.
20	4,400 SQ. FT.
21	4,400 SQ. FT.
22	5,263 SQ. FT.
23	5,263 SQ. FT.
24	3,523 SQ. FT.
25	4,281 SQ. FT.
26	4,000 SQ. FT.
27	4,032 SQ. FT.
28	6,227 SQ. FT.
OUTLOT 1	15,432 SQ. FT.
OUTLOT 2	49,336 SQ. FT.
OUTLOT 3	8,192 SQ. FT.

LEGEND:
 BRASS CAP IN CONCRETE FOUND
 IRON STAKE FOUND
 CHISEL CROSS
 RECORDED AS DATA
 MEASURED DATA
 REMOTES: 1/4" x 24" SOLID ROUND IRON STAKE SET, WEIGHING 4.30 LBS/FT (REBAR).
 ALL OTHER LOT AND OUTLOT CORNERS ARE MARKED WITH A 7/8" x 24" SOLID ROUND IRON STAKE WEIGHING 2.04 LBS/FT (REBAR).
 ALL DISTANCES, LENGTHS AND WIDTHS ARE MEASURED TO THE NEAREST HUNDRETH OF A FOOT.
 UTILITY EASEMENT DIMENSIONS UNLESS OTHERWISE NOTED - NO POLES OR BURIED CABLE TO BE PLACED ON ANY LOT LINE OR LOT CORNER. DISTURBING A SURVEY STAKE IS A VIOLATION OF SECTION 238.29 (5)(4) WISCONSIN STATUTES.
 PUBLIC NON-EXCLUSIVE EASEMENT FOR DRAINAGE PURPOSES.

TREASURER'S CERTIFICATE:
 STATE OF WISCONSIN)
 COUNTY OF DANE)
 As the duly appointed/needed County Treasurer of Dane County, I hereby certify that the records in our offices show no unassessed tax sales and no unpaid taxes or special assessments affecting city of the lands included in "Mosaic Ridge".
 David Worlds, County Treasurer Date

COMMON COUNCIL RESOLUTION:
 "Resolved that this plat known as Mosaic Ridge located in the City of Madison was hereby approved by Enactment No. -- File 10 No. -- entered on this -- day of --, and that said enactment further provided for the acceptance of these lands dedicated and rights conveyed by said plat to the City of Madison for public use."
 Dated this -- day of --, 20--

Madison West-Islet, City Clerk
 City of Madison, Dane County Wisconsin



CITY TREASURER'S CERTIFICATE
 STATE OF WISCONSIN)
 COUNTY OF DANE)
 I, David A. Gewand, being the duly appointed and qualified city treasurer of the City of Madison, do hereby certify that in accordance with the records in my office, there are no unpaid taxes or unpaid special assessments or of any of the land included in the plat of "Mosaic Ridge".
 David A. Gewand, Treasurer, City of Madison Date

There are no objections to this plat with respect to Secs. 238.15, 238.16, 238.20 and 238.21(1) and (2), Wis. Stats. as provided by s. 238.15, Wis. Stats.
 Certified: 20--
 Department of Administration

ARNOLD AND O'SHERIDAN INC
 SURVEYORS
 1000 UNIVERSITY AVENUE
 MADISON, WISCONSIN 53706
 (608) 263-1111