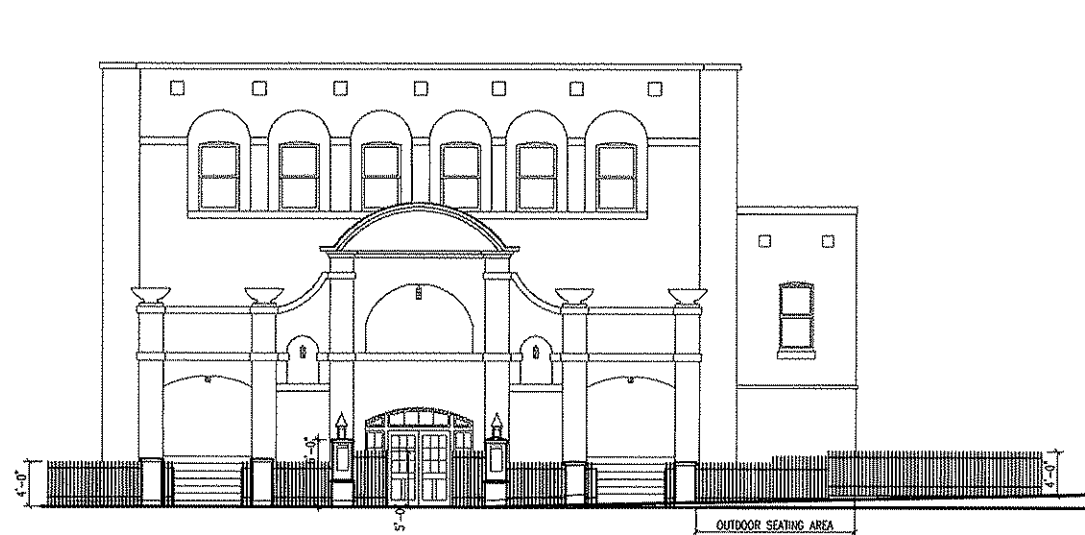


240 WEST GILMAN STREET

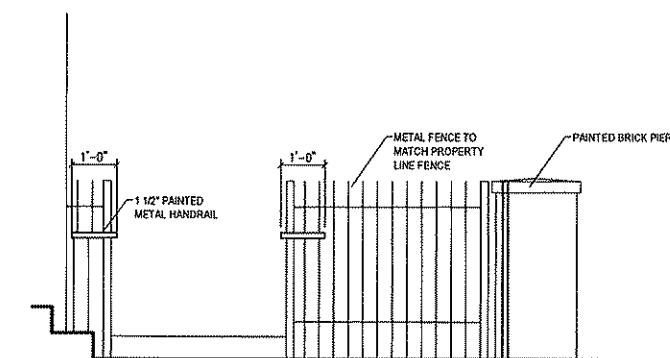
TO.0



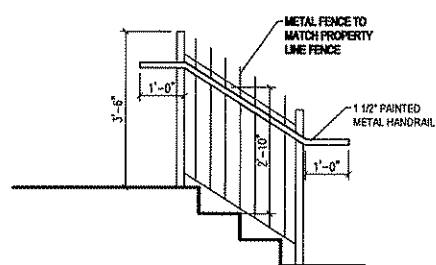
6 FRONT ELEVATION
1/8" = 1'-0"

GENERAL NOTES

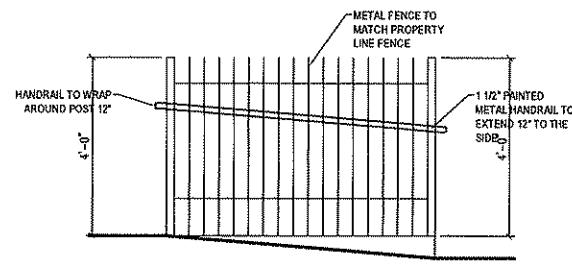
1. NEW COMPOSITE DECKING TO BE BUILT OVER XTG CONCRETE.
2. XTG RETAINING WALL TO BE REPAIRED AS NEEDED.
3. ENTRANCE GATES TO BE KEPT OPEN DURING HOURS OF OPERATION.
4. KNOX BOXES FOR FIRE DEPARTMENT TO BE PROVIDED AT GATE TO THE PARKING LOT AND ENTRANCE GATES.
5. CAPACITY OF THE OUTDOOR SEATING AREA TO BE POSTED OUTSIDE THE DINING AREA.



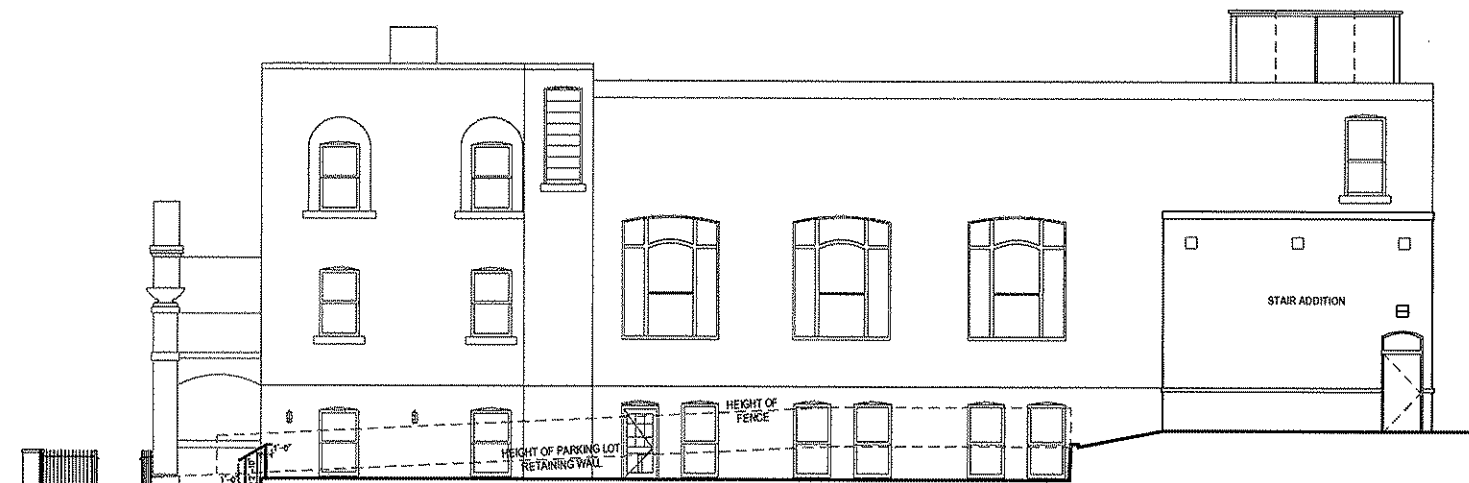
5 ELEVATION AT ADA RAMP
1/2" = 1'-0"



4 ELEVATION AT HANDRAIL
1/2" = 1'-0"



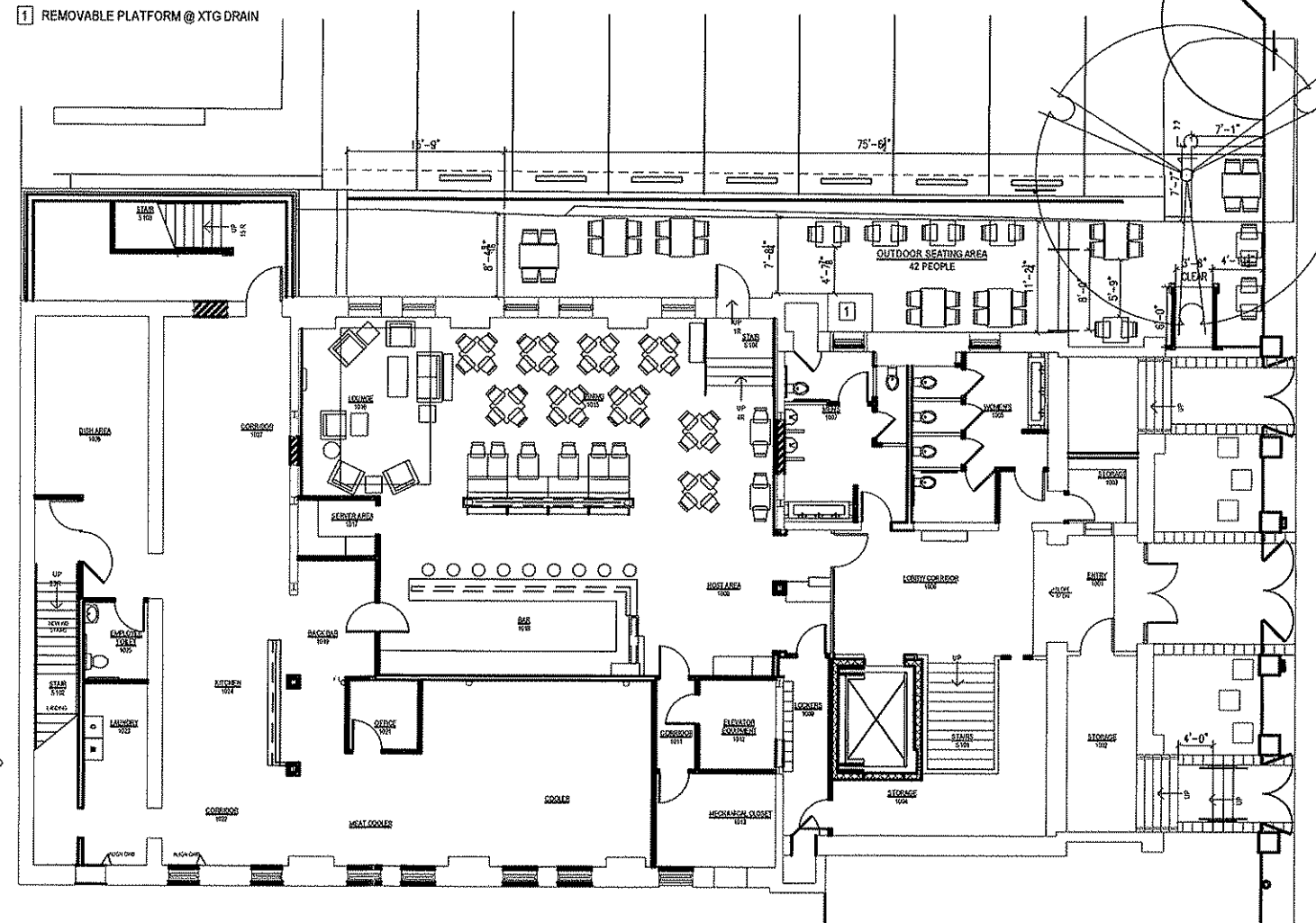
3 SECTION AT RAMP
1/2" = 1'-0"



2 SIDE ELEVATION
1/8" = 1'-0"

KEYNOTES

- 1 REMOVABLE PLATFORM @ XTG DRAIN



1 FIRST FLOOR PLAN AND OUTDOOR EATING AREA
1/8" = 1'-0"

ARCHITECTS

222 West Washington Ave.
Suite 310
Madison, WI 53703
ph: 608.268.1499
fax: 608.268.1498
www.destreearchitects.com

DESTRE ARCHITECTS HOLDS ALL RIGHTS INCLUDING THE COPYRIGHT OF THIS DOCUMENT AS WELL AS THE CONCEPTS AND DESIGN INFORMATION THEREIN. NO PART OF THIS DOCUMENT IS TO BE REPRODUCED, COPIED, OR USED IN WHOLE OR PART WITHOUT THE WRITTEN CONSENT OF DESTRE ARCHITECTS.

SAMBA
BRAZILIAN GRILL
240 WEST GILMAN STREET
MADISON, WI 53703

ISSUANCES:

ALRC	02.07.08
PLAN COMM	04.07.08

PROJECT:

NUMBER:	060703.00
DATE:	03.05.08
REV:	

SHEET:

A1.1