

# Bunky's Cafe

## Madison, Wisconsin

Submittal Date | 15 October 2008

SAA - EUA

### Sheet Index

Exhibit	Sheet Title
-	Sheet Index
1	Site Plan
2	Lower Level Plan
3	First Floor Plan
4	Second Floor Plan

### Legal Description

HUDSON PARK W 1/2 LOT 1 ALL LOTS  
2 & 3 BLK 1 EX N FOR STREET

### Site Statistics

Lot Area	14,772 sf (0.34 acres)
Total Parking Stalls	
Customer Stalls	4
Disable Parking	1
Resident Parking	1
Catering Van Parking	1
TOTAL	7 Stalls
Existing ISR	
Total Site	14,772 sf
Impervious Surface	6,530 sf
Existing ISR	0.44
Proposed ISR	
Total Site	14,772 sf
Impervious Surface	9,027 sf
Proposed ISR	0.61
Building	
Total Area	8,650 sf
Building Height	29'-6"

### Location Map



SITE STATISTICS

SITE AREA	14,772 SF
BUILDING FOOTPRINT	3,268 SF
IMPERVIOUS SURFACE	5,759 SF
TOTAL IMPERVIOUS SURFACE	9,027 SF
IMPERVIOUS SURFACE RATIO	0.61
BUILDING HEIGHT	29'-6"
BUILDING AREA	8,650 SF
EXISTING FIRE HYDRANTS	(1) AT OHIO ST. AND ATWOOD AVE. DISTANCE: 160' (1) AT HUDSON AVE. AND ATWOOD AVE. DISTANCE: 255'

LEGAL DESCRIPTION

HUDSON PARK W 1/2 LOT 1 ALL LOTS 2 & 3 BLK 1 EX N FOR STREET

LANDSCAPE POINT SCHEDULE

CITY OF MADISON REQUIREMENTS

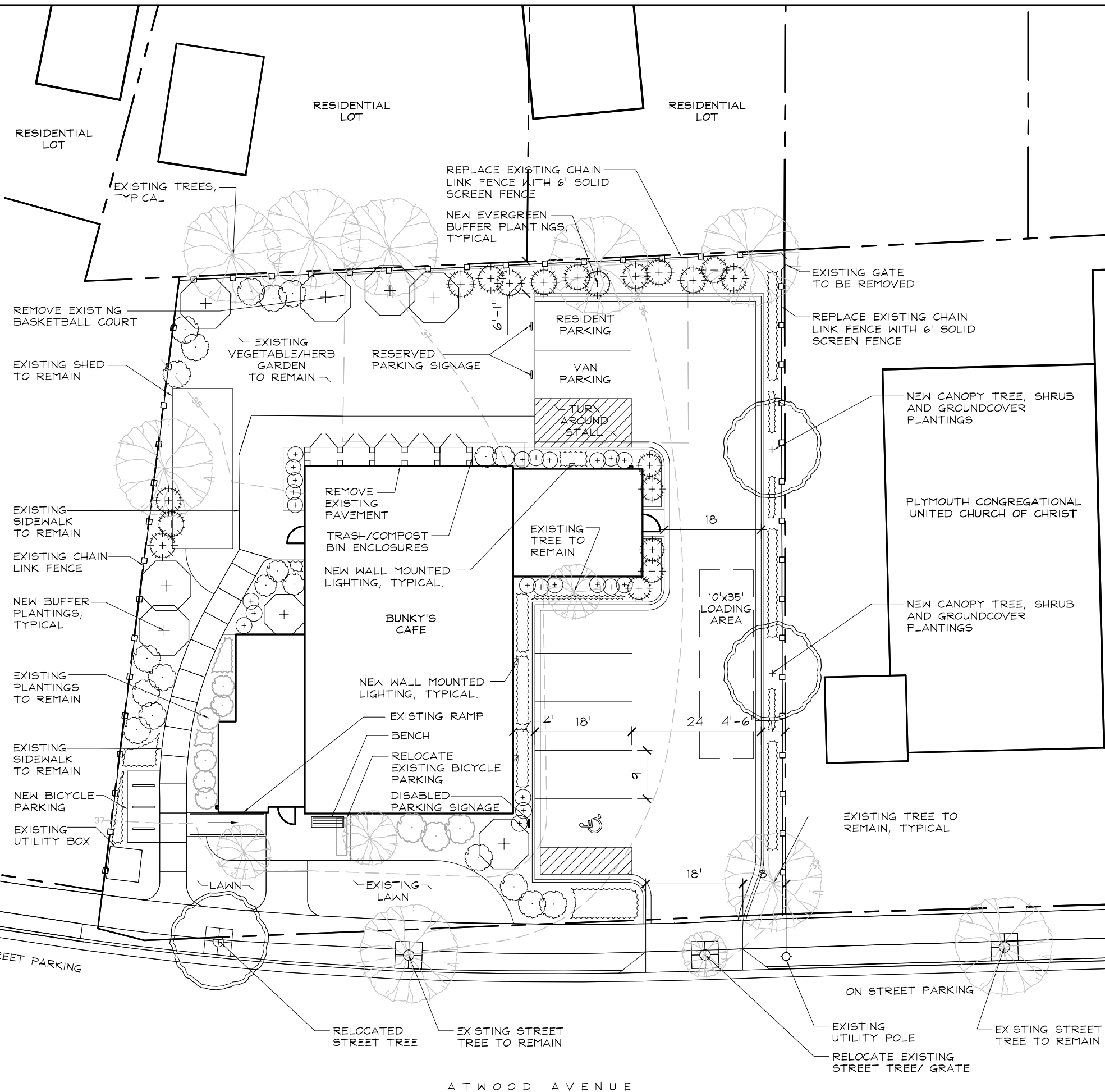
SURFACE PARKING STALLS	7
STORAGE AREA/300 SF	4.32 SF
CANOPY TREES REQUIRED	1
REQUIRED LANDSCAPE POINTS	39.6

LANDSCAPE POINT SCHEDULE

REQUIRED CANOPY TREES	1	TREES	X	0 PTS.	=	0
EXISTING CANOPY TREES	3	TREE	X	35 PTS.	=	105
CANOPY TREES 2-2.5" CAL.	2	TREES	X	35 PTS.	=	70
DECIDUOUS SHRUBS	23	SHRUBS	X	2 PTS.	=	46
EVERGREEN SHRUBS	13	SHRUBS	X	3 PTS.	=	39

TOTAL POINTS: 260

ADDITIONAL POINTS PROVIDED: 220.4



SCHREIBER / ANDERSON  
ASSOCIATES, INC.  
7817 John Nolen Drive  
Madison, WI 53713  
Ph. 608.255.0800  
Ft. 608.255.7750  
www.saa-madison.com

Professional Seal

Revision Date

Project Name

Bunky's Cafe  
Rezoning

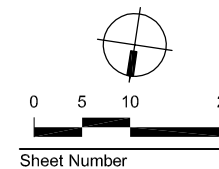
NOT FOR  
CONSTRUCTION

2425 Atwood Ave.  
Madison, WI

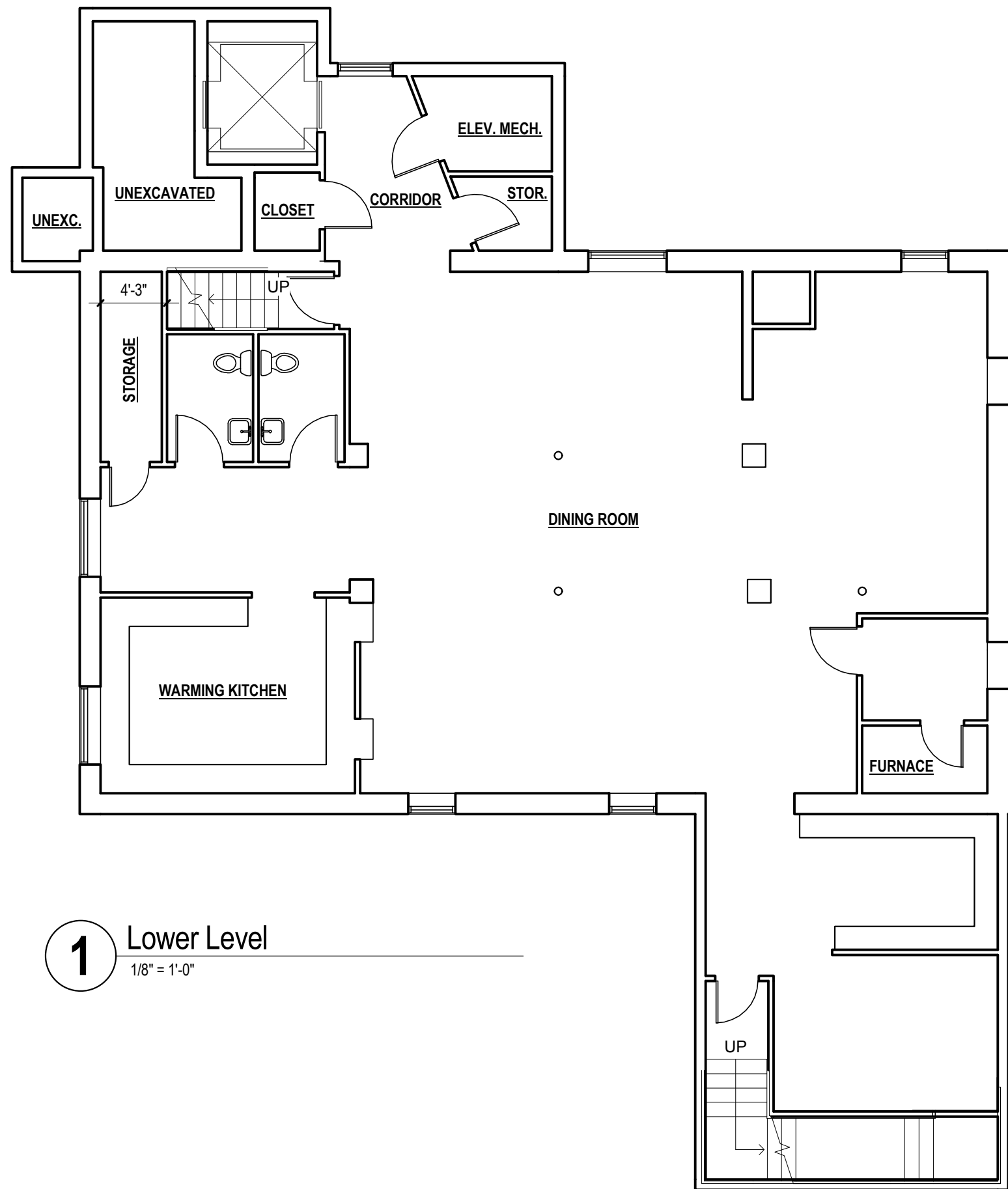
Drawn By: PH  
Checked By: TA  
File: P-SP  
Issued For: Approval  
Issue Date: 10/15/2008  
Project No. 2346

Sheet Title

Site Plan



C1.0



**1** Lower Level  
1/8" = 1'-0"

# BUNKY'S CAFE

2425 ATWOOD AVENUE MADISON, WISCONSIN

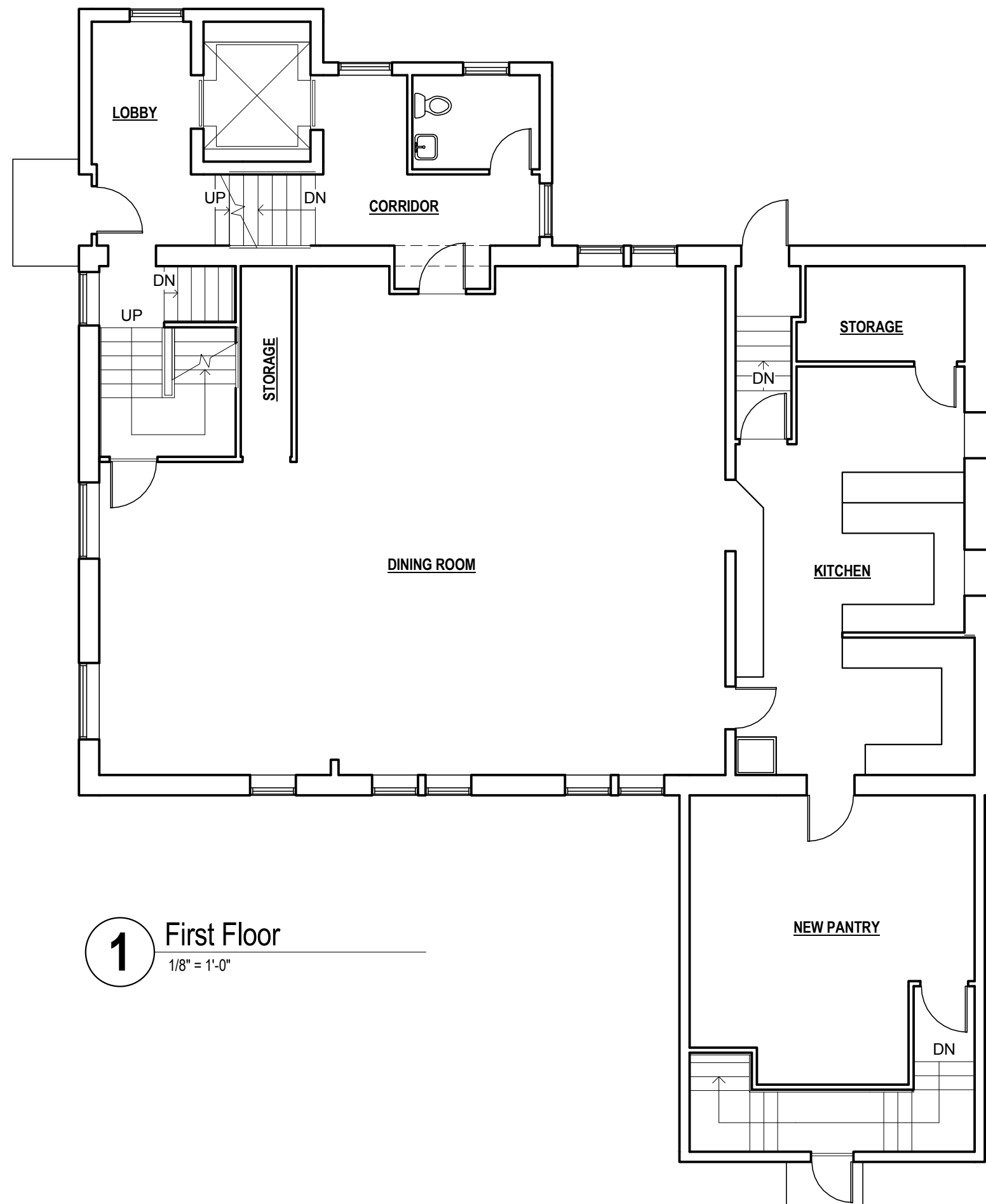


epstein uhen : architects

10/14/08

708450-01

© Epstein Uhen Architects, Inc.



**1** First Floor  
1/8" = 1'-0"

# BUNKY'S CAFE

2425 ATWOOD AVENUE MADISON, WISCONSIN

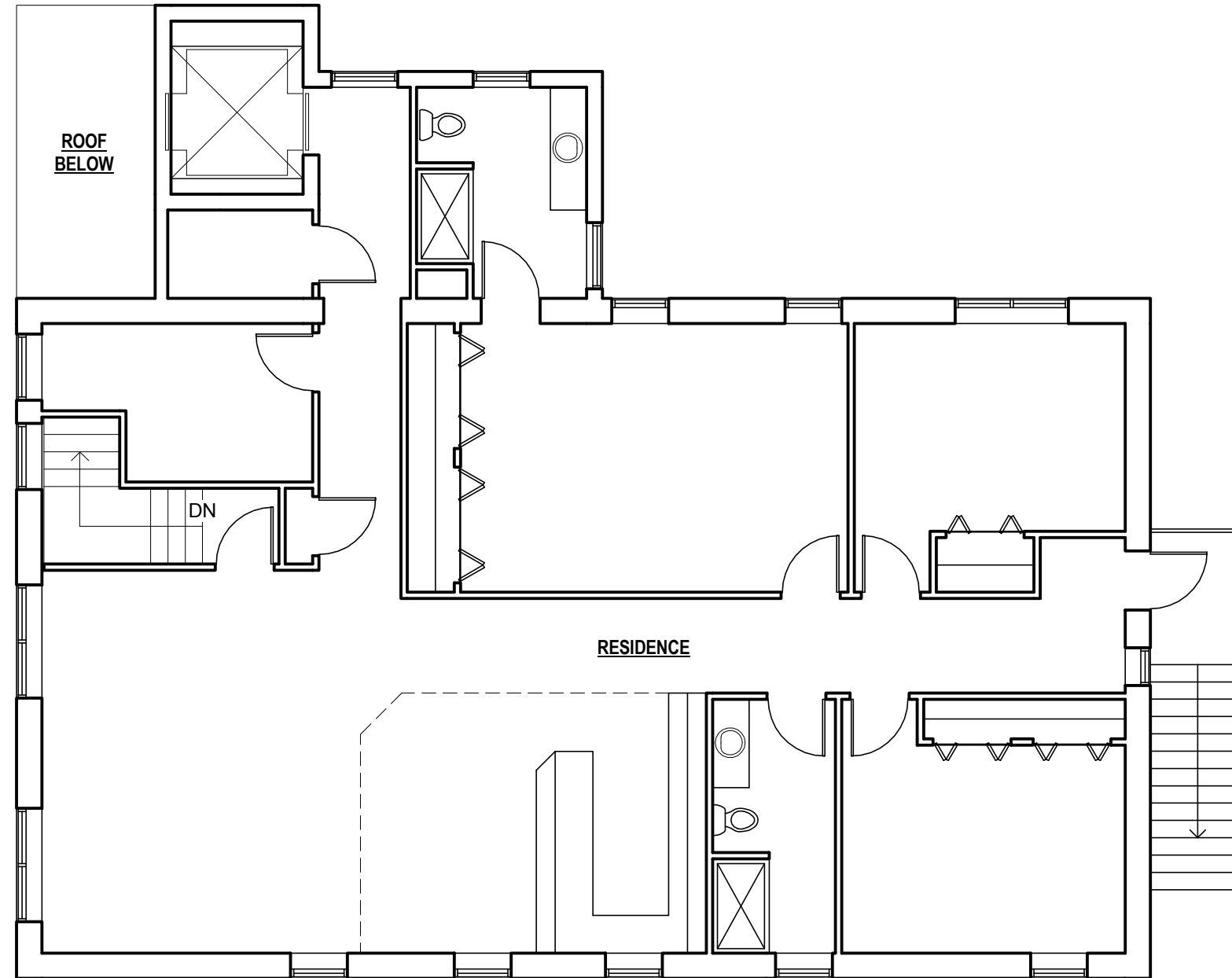


epstein uhen : architects

10/14/08

708450-01

© Epstein Uhen Architects, Inc.



**1** Second Floor  
1/8" = 1'-0"

# BUNKY'S CAFE

2425 ATWOOD AVENUE MADISON, WISCONSIN



epstein uhen : architects

10/14/08

708450-01

© Epstein Uhen Architects, Inc.