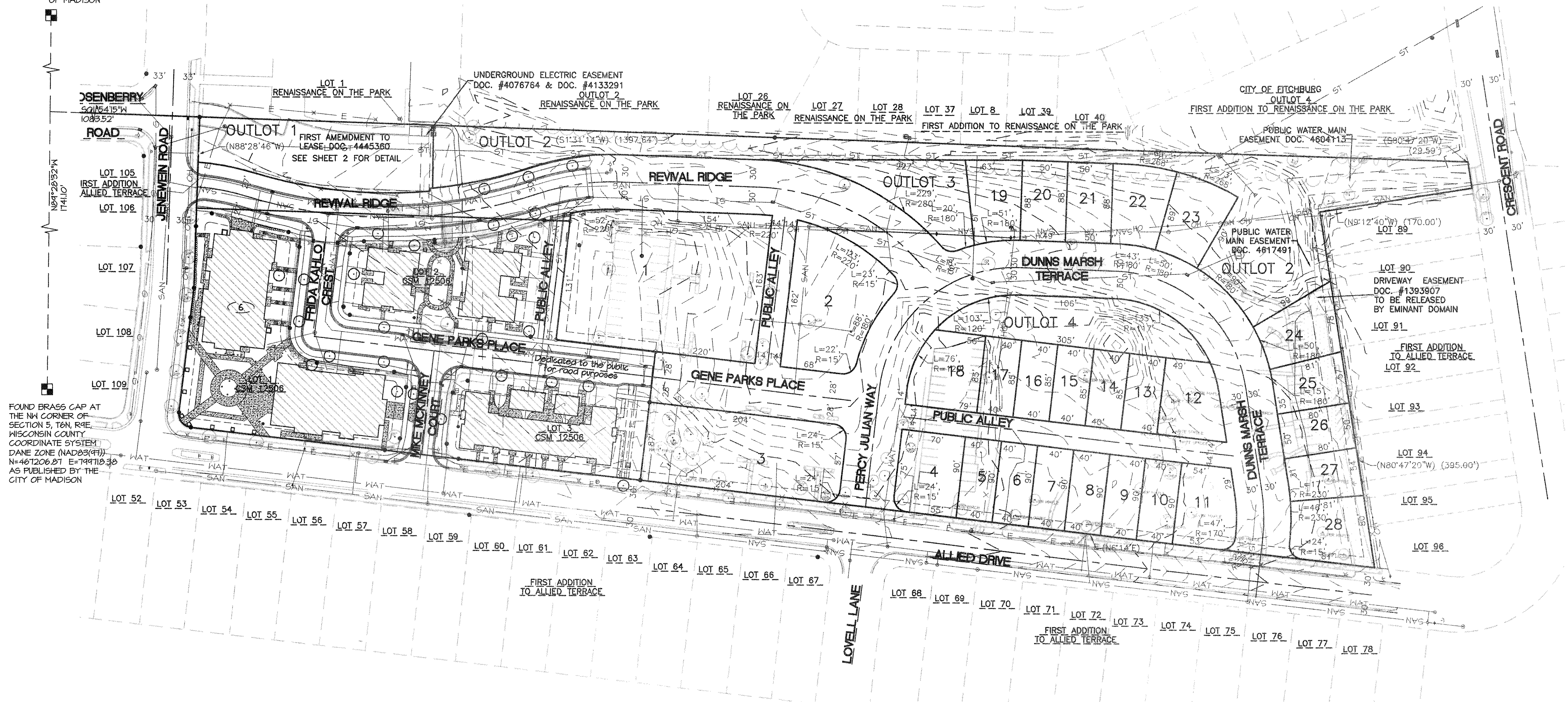


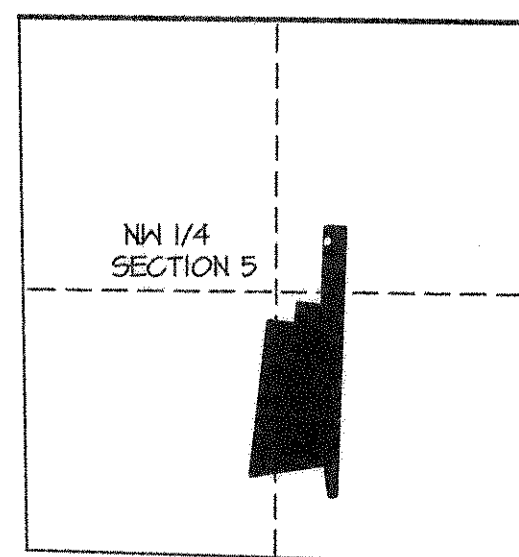
# PRELIMINARY PLAT OF ALLIED DRIVE, PHASE II

LOT 4, CERTIFIED SURVEY MAP 12506, "LANDS DEDICATED TO THE PUBLIC", FIRST ADDITION TO ALLIED TERRACE, BEING PART OF THE NE 1/4, SW 1/4 AND SE 1/4 OF THE NW 1/4 OF SECTION 5, T6N, R9E, IN THE CITY OF MADISON, DANE COUNTY, WISCONSIN

FOUND BRASS CAP AT THE N 1/4 CORNER OF SECTION 5, T6N, R9E, WISCONSIN COUNTY COORDINATE SYSTEM DANE ZONE (NAD83(97)) N=461182.65 E=802634.47 AS PUBLISHED BY THE CITY OF MADISON



FOUND BRASS CAP AT THE NW CORNER OF SECTION 5, T6N, R9E, WISCONSIN COUNTY COORDINATE SYSTEM DANE ZONE (NAD83(97)) N=461206.97 E=799718.38 AS PUBLISHED BY THE CITY OF MADISON



LOCATION PLAN SCALE 1"=1000' PART OF THE NE 1/4, SE 1/4 AND SW 1/4 OF THE NW 1/4 OF SECTION 5, T6N, R9E, IN THE CITY OF MADISON, DANE COUNTY, WI

SCALE 1" = 60'  
GRID NORTH:  
ALL BEARINGS ARE REFERENCE TO GRID NORTH OF THE WISCONSIN COUNTY COORDINATE SYSTEM - DANE ZONE, NAD83(97) THE NORTH LINE OF THE NW 1/4 OF SECTION 5 BEARS N89°28'32"W

OWNER:  
COMMUNITY DEVELOPMENT AUTHORITY - CITY OF MADISON

OBJECTING AUTHORITIES:  
DANE COUNTY  
DEPARTMENT OF ADMINISTRATION

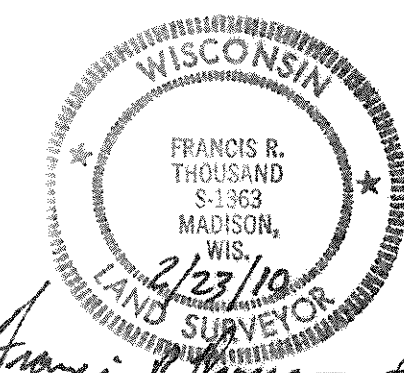
APPROVING AUTHORITIES:  
CITY OF MADISON

SURVEYOR:  
FRANCIS R. THOUSAND  
1111 DEMING WAY, SUITE 200  
MADISON, WI 53717

The locations of existing utilities installations as shown on this drawing were obtained from the records of municipality, local utility records and Diggers Hotline locations. The accuracy of these records or the locations by Diggers Hotline cannot be guaranteed or certified. There may be other underground utility installations within the project area that are not shown.

DESCRIPTION:  
LOT 4, CERTIFIED SURVEY MAP 12506 AND THE AREA SHOWN AS "DEDICATED TO THE PUBLIC", FIRST ADDITION TO ALLIED TERRACE, BEING PART OF THE NE 1/4, SW 1/4 AND SE 1/4 OF THE NW 1/4 OF SECTION 5, T6N, R9E, IN THE CITY OF MADISON, DANE COUNTY, WISCONSIN.

NOTES:  
1. ALL ELEVATIONS ARE NAVD83 DATUM.  
2. BENCHMARK IS THE NE CORNER OF SECTION 4, T6N, R9E, AS SHOWN.  
3. CONTOUR INTERVAL IS ONE FOOT.



THIS INSTRUMENT WAS DRAFTED BY:  
FRANCIS R. THOUSAND



SHEET 1 OF 1