

EXTERIOR MATERIAL SCHEDULE

BRICK VENEER

BR-1: BRICK VENEER; ARCTIC WHITE L-4: SMOOTH TEXTURE
MORTAR TO MATCH BRICK

BR-2: BRICK VENEER; COPPERTONE
MORTAR TO MATCH BRICK

ARCHITECTURAL PANELS

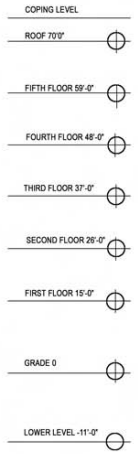
AP-1: COMPOSITE PANEL; DARK BROWN
AP-2: COMPOSITE PANEL; LIGHT BROWN
AP-3: COMPOSITE PANEL; DEEP BROWN

WINDOW FRAMES

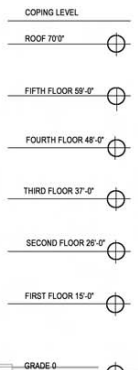
CHAMPAGNE BRONZE ANODIZED ALUMINUM



1-TOWNHOUSE NORTH ELEVATION 3/32"=1'-0"



2- TOWNHOUSE SOUTH ELEVATION 3/32"=1'-0"



ELEVATIONS

VANDEWALLE & ASSOCIATES INC.

Mullins Group, LLC
Planners • Designers • Engineers • Property Managers

eua

appleby urban :: architects

2550 UNIVERSITY AVENUE APARTMENTS

20 OCTOBER 2010

EXTERIOR MATERIAL SCHEDULE

BRICK VENEER

BR-1: BRICK VENEER; ARCTIC WHITE L-4: SMOOTH TEXTURE
MORTAR TO MATCH BRICK

BR-2: BRICK VENEER; COPPERTONE
MORTAR TO MATCH BRICK

ARCHITECTURAL PANELS

AP-1: COMPOSITE PANEL; DARK BROWN

AP-2: COMPOSITE PANEL; LIGHT BROWN

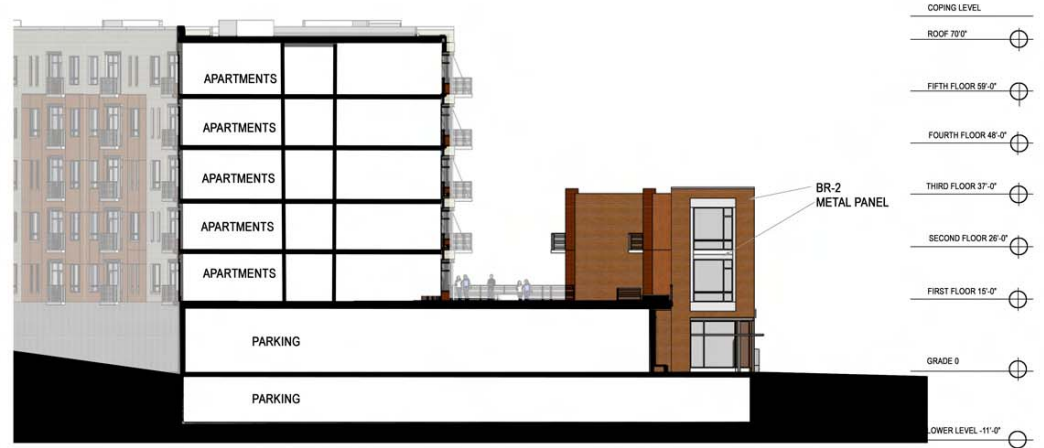
AP-3: COMPOSITE PANEL; DEEP BROWN

WINDOW FRAMES

CHAMPAGNE BRONZE ANODIZED ALUMINUM



3-TOWNHOUSE EAST ELEVATION 3/32"=1'-0"



4-TOWNHOUSE WEST ELEVATION 3/32"=1'-0"



5- APARTMENT BUILDING EAST ELEVATION 3/32"=1'-0"



6- APARTMENT BUILDING WEST ELEVATION 3/32"=1'-0"

ELEVATIONS

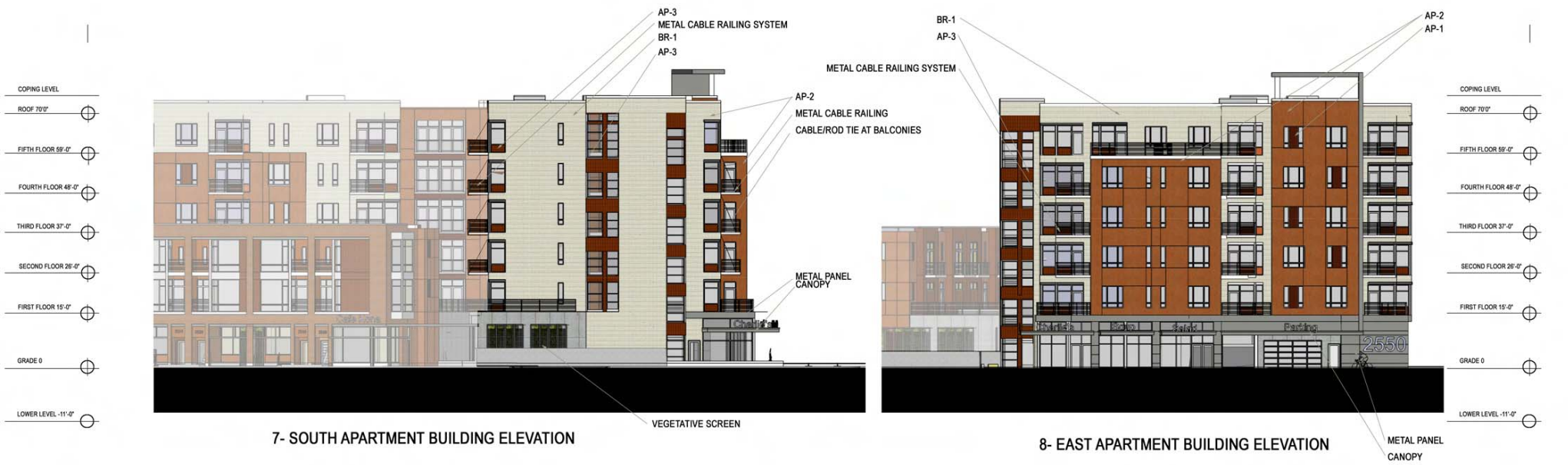
VANDEWALLE & ASSOCIATES INC.

Mullins Group, LLC
Planners • Designers • Engineers • Property Managers

eua
epstein urban architects

2550 UNIVERSITY AVENUE APARTMENTS

20 OCTOBER 2010



EXTERIOR MATERIAL SCHEDULE

BRICK VENEER

- BR-1: BRICK VENEER; ARCTIC WHITE L-4: SMOOTH TEXTURE MORTAR TO MATCH BRICK
- BR-2: BRICK VENEER; COPPERTONE MORTAR TO MATCH BRICK

ARCHITECTURAL PANELS

- AP-1: COMPOSITE PANEL; DARK BROWN
- AP-2: COMPOSITE PANEL; LIGHT BROWN
- AP-3: COMPOSITE PANEL; DEEP BROWN

WINDOW FRAMES

- CHAMPAGNE BRONZE ANODIZED ALUMINUM

ELEVATIONS

2550 UNIVERSITY AVENUE APARTMENTS

VANDEWALLE & ASSOCIATES INC.

Mullins Group, LLC
Planner • Designer • Engineer • Property Manager

eua

apostrophe urban architects

20 OCTOBER 2010



10- WEST ELEVATION OF APARTMENT BUILDING 3/32"=1'-0"

EXTERIOR MATERIAL SCHEDULE

BRICK VENEER

BR-1: BRICK VENEER; ARCTIC WHITE L-4: SMOOTH TEXTURE
MORTAR TO MATCH BRICK

BR-2: BRICK VENEER; COPPERTONE
MORTAR TO MATCH BRICK

ARCHITECTURAL PANELS

AP-1: COMPOSITE PANEL; DARK BROWN

AP-2: COMPOSITE PANEL; LIGHT BROWN

AP-3: COMPOSITE PANEL; DEEP BROWN

WINDOW FRAMES

CHAMPAGNE BRONZE ANODIZED ALUMINUM



11- SOUTH ELEVATION OF APARTMENT BUILDING 3/32"=1'-0"

ELEVATIONS

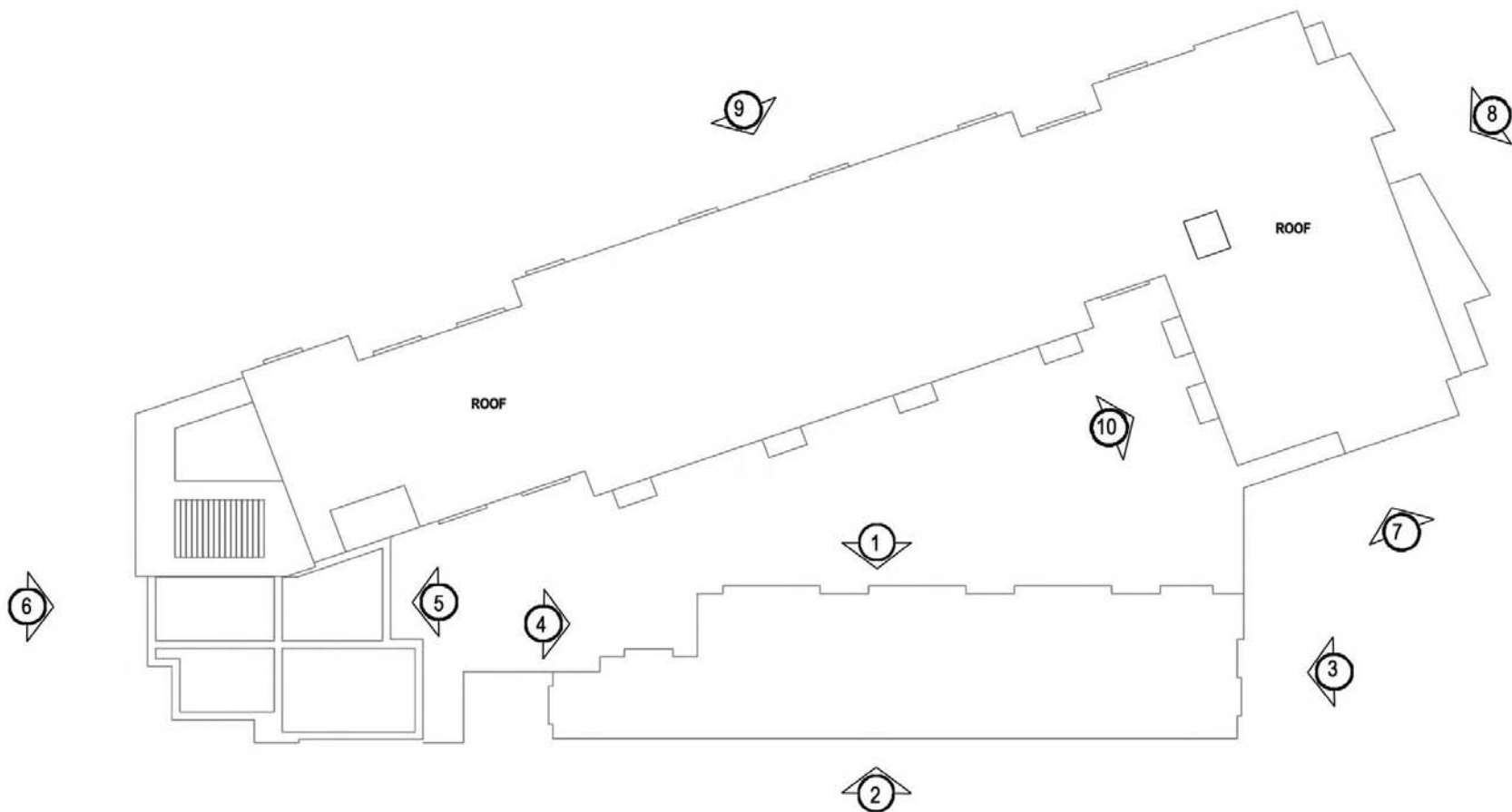
VANDEWALLE & ASSOCIATES INC.

Mullins Group, LLC
Planner • Designer • Engineer • Property Manager

eua
epstein urban architects

2550 UNIVERSITY AVENUE APARTMENTS

20 OCTOBER 2010



ELEVATION KEY PLAN



VIEW 1 - LOOKING WEST

VANDEWALLE &
ASSOCIATES INC.

Mullins Group, LLC
President • Vice President • Engineer • Project Manager

eua

eggs@eua.com • 800.855.8555

2550 UNIVERSITY AVENUE APARTMENTS

20 OCTOBER 2010

© 2010 EUSA Architects, Inc.



VIEW - 2 LOOKING WEST

2550 UNIVERSITY AVENUE APARTMENTS

VANDEWALLE &
ASSOCIATES INC.

Mullins Group, LLC
Residential • Commercial • Industrial • Heavy Industrial

eua

eggs@eua.com • 800.850.8500

20 OCTOBER 2010

© 2010 EUSA Architects, Inc.



VIEW - 3 LOOKING EAST

2550 UNIVERSITY AVENUE APARTMENTS

VANDEWALLE &
ASSOCIATES INC.

Mullins Group, LLC
Residential • Commercial • Industrial • Project Management

eua

eggs@eua.com • 800.850.8500

20 OCTOBER 2010

© 2010 Van Dewalle, Inc.



VIEW - 4

2550 UNIVERSITY AVENUE APARTMENTS

VANDEWALLE &
ASSOCIATES INC.

Mullins Group, LLC
Residential • Commercial • Industrial • Planning Services

eua

eggs@eua.com • 800.850.8500

20 OCTOBER 2010

© 2010 Egan & Associates, Inc.



VIEW - 5 LOOKING EAST

2550 UNIVERSITY AVENUE APARTMENTS

VANDEWALLE &
ASSOCIATES INC.

Mullins Group, LLC
President • Vice President • Engineer • Project Manager

eua

engineering • architecture

20 OCTOBER 2010

© Euphoric Urban Architecture, Inc.



VIEW - 6 MAIN ENTRY

2550 UNIVERSITY AVENUE APARTMENTS

VANDEWALLE &
ASSOCIATES INC.

Mullins Group, LLC
Residential • Commercial • Industrial • Project Management

eua

eggs@eua.com • 800.850.8500

20 OCTOBER 2010

© 2010 Van Dewalle, Inc.



VIEW - 7 MAIN ENTRY

2550 UNIVERSITY AVENUE APARTMENTS

VANDEWALLE &
ASSOCIATES INC.

Mullins Group, LLC
President • Designer • Engineer • Project Manager

eua

eggs@eua.com • 800.875.875

20 OCTOBER 2010

© 2010 Van Dewalle, Inc.



VIEW - 8 UNIVERSITY AND HIGHLAND

2550 UNIVERSITY AVENUE APARTMENTS

VANDEWALLE &
ASSOCIATES INC.

Mullins Group, LLC
President • Vice President • Engineer • Project Manager

eua

engineering • architecture

20 OCTOBER 2010

© 2010 Mullins Group, LLC



VIEW - 9 CAMPUS DRIVE LOOKING WEST

2550 UNIVERSITY AVENUE APARTMENTS

VANDEWALLE &
ASSOCIATES INC.

Mullins Group, LLC
President • Vice President • Engineer • Project Manager

eua

engineering • architecture

20 OCTOBER 2010

© 2010 Van de Walle, Inc.



VIEW - 10 CAMPUS DRIVE LOOKING EAST

2550 UNIVERSITY AVENUE APARTMENTS


VANDEWALLE &
ASSOCIATES INC.

 Mullins Group, LLC
Residential • Commercial • Industrial • Project Management

 eua

eggs@eua.com • 800.850.8500

20 OCTOBER 2010

© 2010 Vandewalle & Associates, Inc.



VIEW - 11 VIEW OF EAST PATIO

2550 UNIVERSITY AVENUE APARTMENTS

VANDEWALLE &
ASSOCIATES INC.

Mullins Group, LLC
President • Vice President • Engineer • Project Manager

eua

eggs@eua.com • 800.850.8500

20 OCTOBER 2010

© 2010 EUSA Architects, Inc.



VIEW - 12 VIEW OF TOWNHOMES

VANDEWALLE &
ASSOCIATES INC.

Mullins Group, LLC
President • Vice President • Engineer • Project Manager

eua

engineering • architecture

2550 UNIVERSITY AVENUE APARTMENTS

20 OCTOBER 2010

© Epsilon Urban Architecture, Inc.



VIEW - 13 VIEW OF WEST COMMERCIAL SPACE

VANDEWALLE &
ASSOCIATES INC.

Mullins Group, LLC
President • Vice President • Engineer • Project Manager

eua

eggs@eua.com • 800.850.8500

2550 UNIVERSITY AVENUE APARTMENTS

20 OCTOBER 2010

© 2010 Van Dewalle, Inc.



VIEW - 14 VIEW OF EAST COMMERCIAL SPACE

VANDEWALLE &
ASSOCIATES INC.

Mullins Group, LLC
President • Executive • Engineer • Project Manager

eua

eggs@eua.com • 800.850.8500

2550 UNIVERSITY AVENUE APARTMENTS

20 OCTOBER 2010

© 2010 Van Dewalle, Inc.