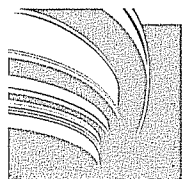
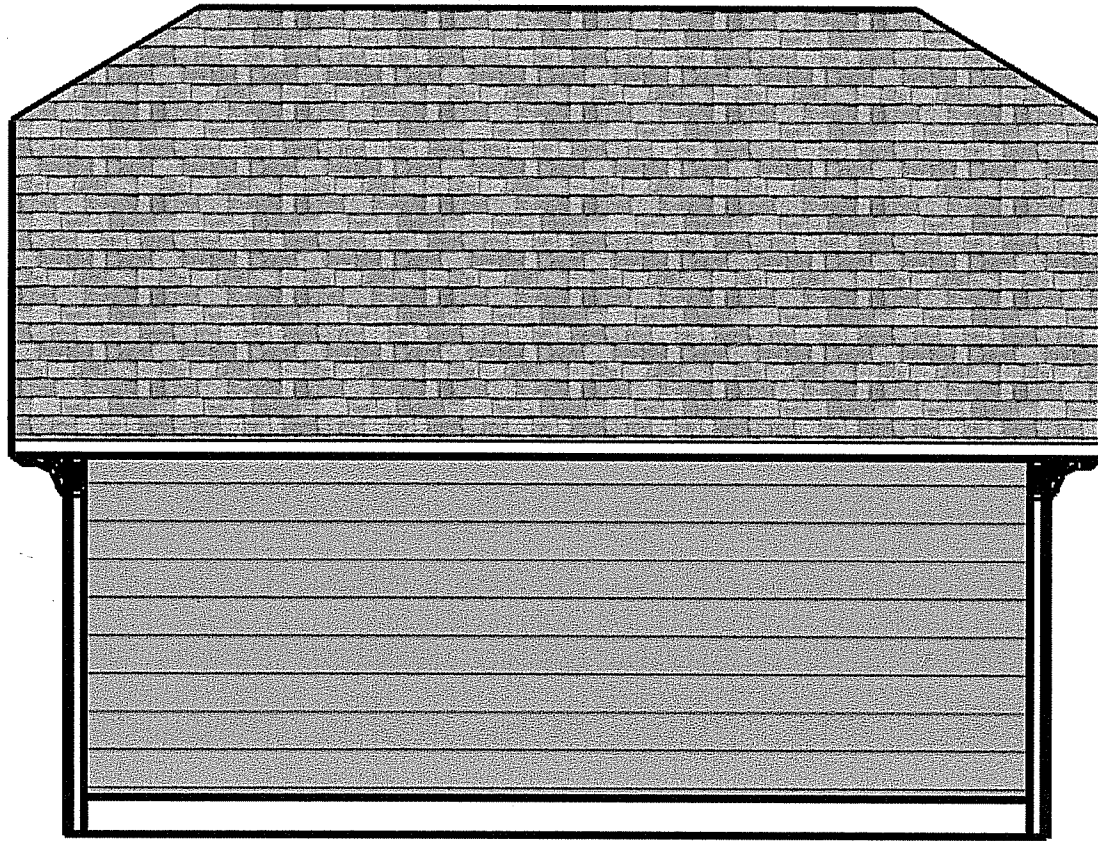


**TRIMCRAFT  
BUILDERS**  
OF MADISON

2830 Waunona Way  
Garage

Drawn by Charles Cooner | November 26th. 2007

1  
1/4" = 1'



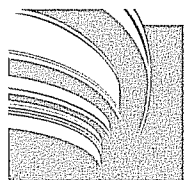
**TRIMCRAFT  
BUILDERS**  
OF MADISON

**2830 Waunona Way**  
Garage

Drawn by Charles Cooner | November 26th. 2007

2

1/4" = 1'

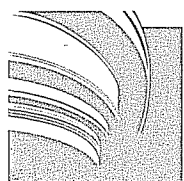
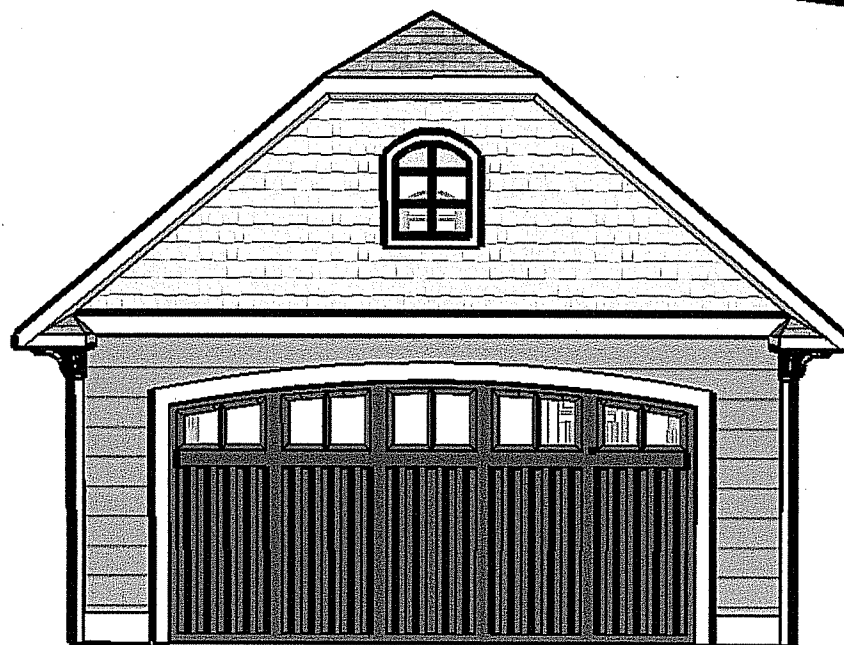
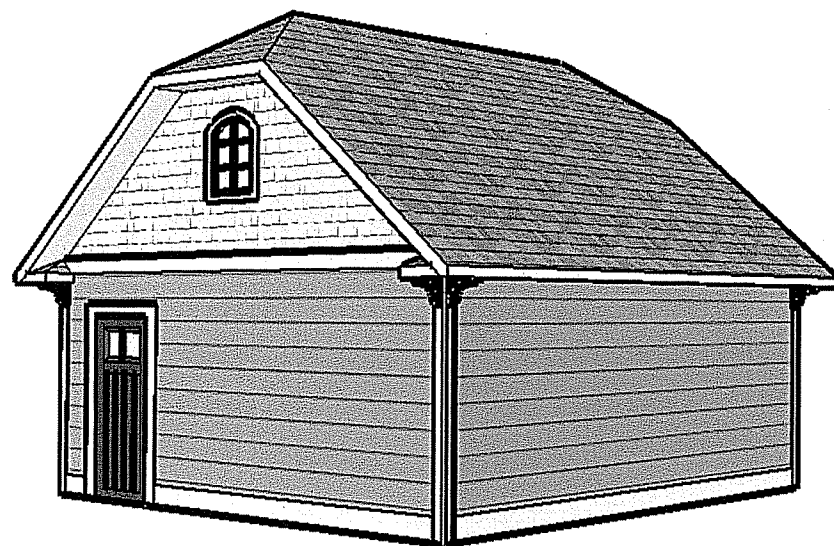
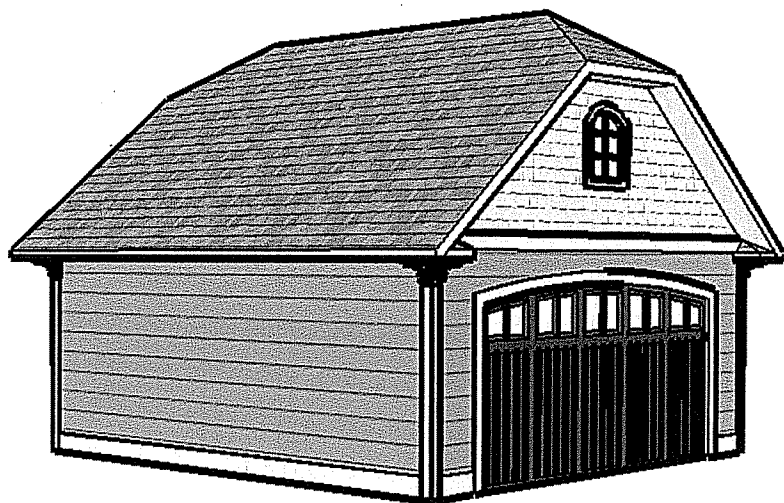


**TRIMCRAFT  
BUILDERS**  
OF MADISON

2830 Waunona Way  
Garage

Drawn by Charles Cooner | November 26th. 2007

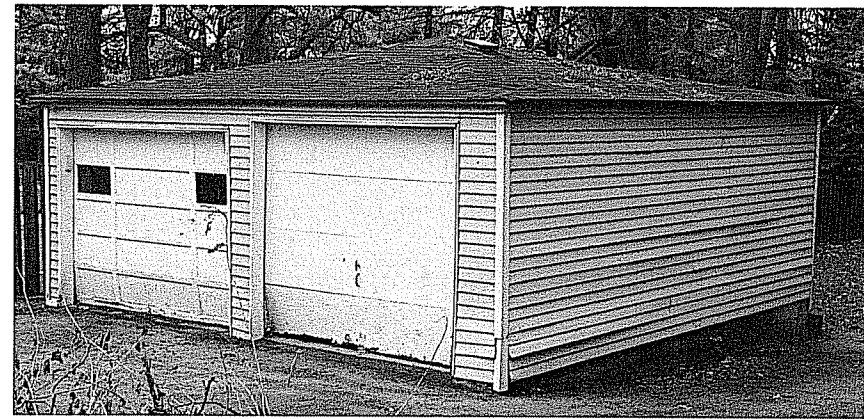
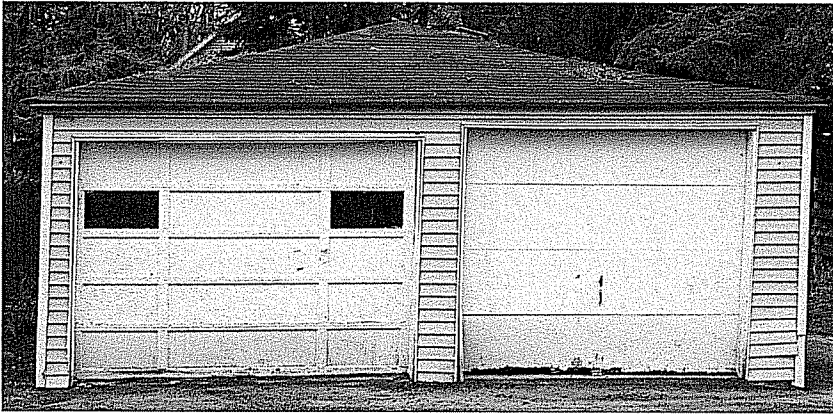
3  
1/4" = 1'



**TRIMCRAFT  
BUILDERS**  
OF MADISON

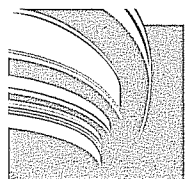
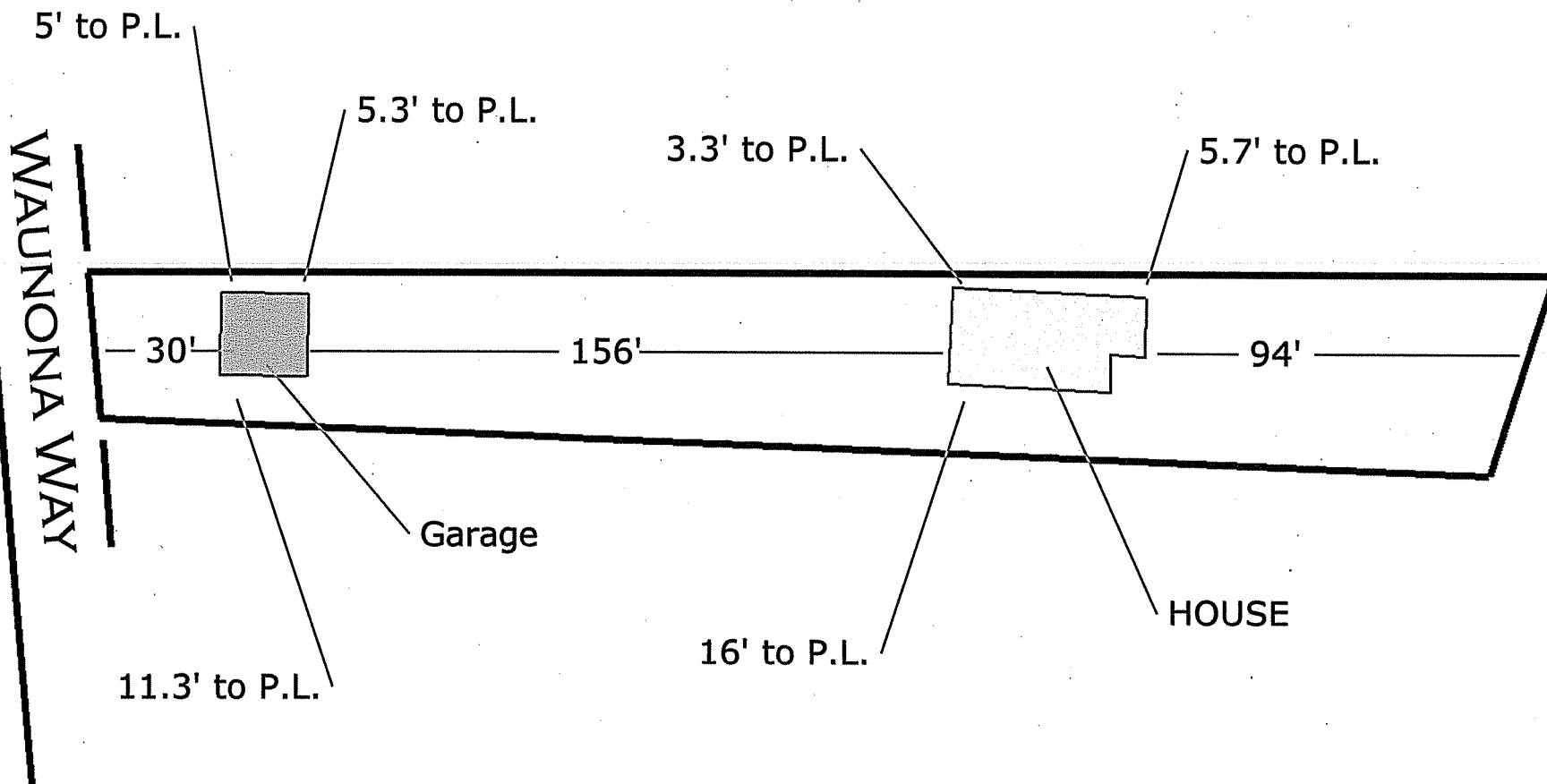
2830 Waunona Way  
Garage

Drawn by Charles Cooner | November 26th. 2007



We are proposing to replace this garage at 2830 Waunona Way. These photos are current (11/18/07) and undoctored. We are planning to rebuild the walls to the existing height (8') and to make the roof pitch match the existing house (between a 10/12 and an 11/12). We plan to reuse most of the existing foundation but will need to move the west foundation wall so that it conforms to current setbacks. Problems with the existing garage:

- Severely leaning to the East
- Overhead doors do not open due to lean
- Roof rafters sagging
- Siding starting to come loose
- Ugly



**TRIMCRAFT  
BUILDERS**  
OF MADISON

**2830 Waunona Way**  
Garage

Drawn by Charles Cooner | November 26th. 2007

6

1" = 40'