



Map Data © 2009 N



0 250' 500'
SCALE IN FEET

JSD Professional Services, Inc.
Engineers • Surveyors • Planners

MADISON REGIONAL OFFICE
161 HORIZON DRIVE, SUITE 101
VERONA, WISCONSIN 53593
608.848.5060 PHONE | 608.848.2255 FAX

www.jsdinc.com

PROJECT:

**MADISON COLLEGE
PARKING EXPANSION**

MADISON, WI

SHEET TITLE:

**AREA - WIDE
LOCATION MAP**

JSD PROJECT NUMBER:

09-3867

DRAWN BY: APPROVED:

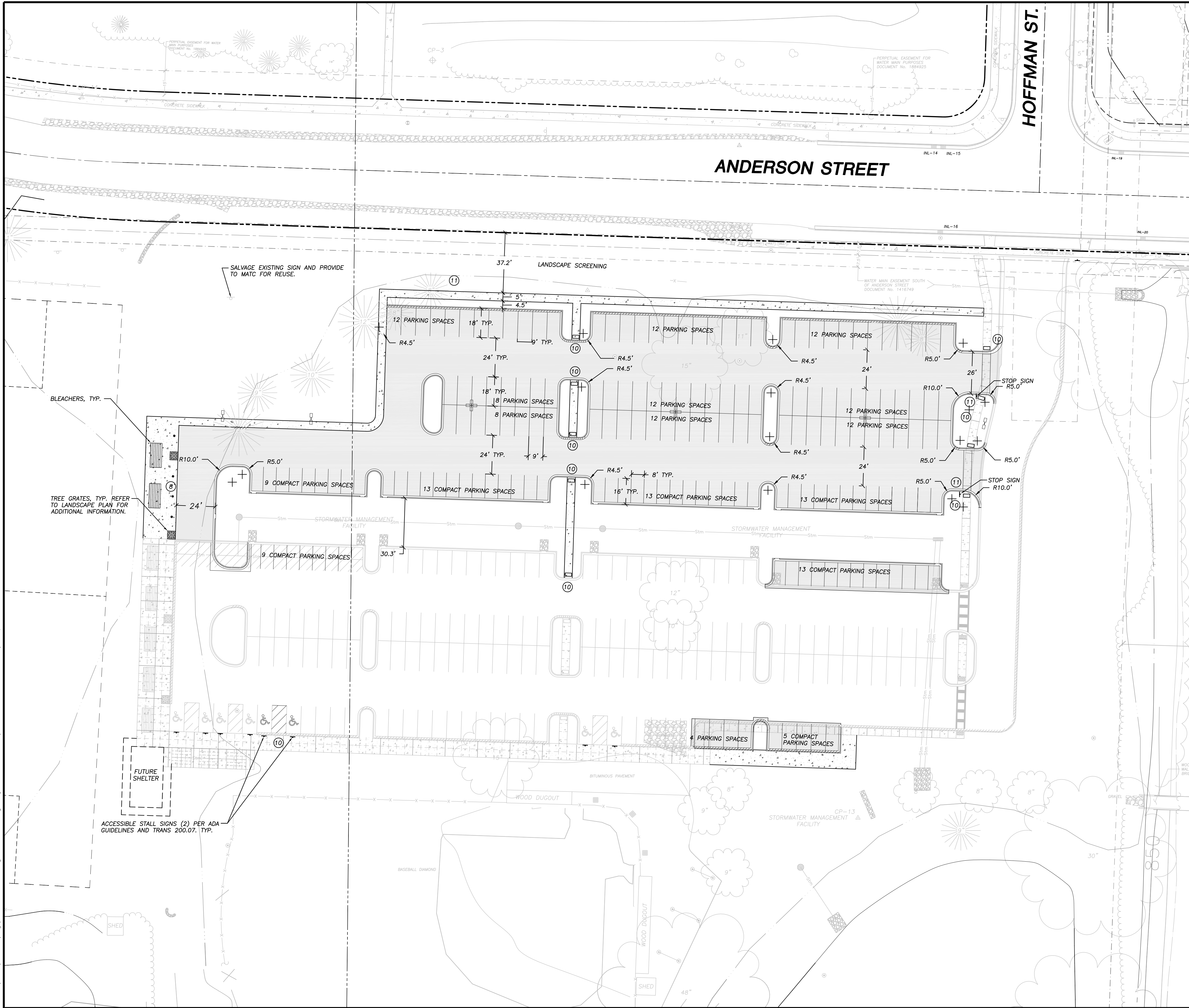
DOS WPW

DATE:

12-04-09

SHEET NUMBER:

File: J:\2010\104154\dwg\10-4154_Civil_Design_South Lot.dwg Layout: C1.0 - site plan User: dos Plotted: Apr 05, 2011 - 10:27am Xref's:



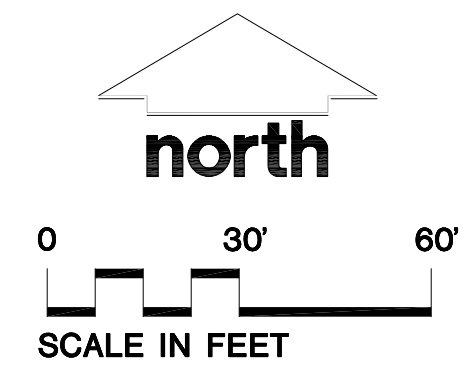
LEGEND (PROPOSED)

---	PROPERTY LINE
---	EDGE OF PAVEMENT
---	STORMWATER BASIN OUTLINE
---	BERM OUTLINE
---	ASPHALT PAVEMENT
---	CONCRETE PAVEMENT
□	LIGHT FIXTURE, REFER TO LIGHTING PLANS
■	TREE GRATE, REFER TO LANDSCAPE PLANS
•	BOLLARD

- GENERAL NOTES**
- REFER TO THE EXISTING CONDITIONS SURVEY FOR EXISTING CONDITIONS, NOTES AND LEGENDS. EXISTING CONDITIONS SURVEY PERFORMED BY JSD IN OCTOBER 2009.
 - ALL WORK IN THE ROW SHALL BE IN ACCORDANCE WITH THE CITY OF MADISON STANDARD SPECIFICATIONS FOR PUBLIC WORKS CONSTRUCTION.
 - EXISTING GRADE SPOT ELEVATIONS SHOWN FOR INFORMATIONAL PURPOSES. DURING CONSTRUCTION MATCH EXISTING GRADES AT PROPERTY BOUNDARIES.
 - NO SITE GRADING OUTSIDE OR DOWNSLOPE OF PROPOSED SILT FENCE LOCATION. NO LAND DISTURBANCE BEYOND PROPERTY LINES.
 - THIS PROJECT HAS BEEN DESIGNED AND WILL BE CONSTRUCTED IN COMPLIANCE WITH ALL OF THE WDNR GENERAL PERMIT APPLICATION ELIGIBILITY STANDARDS.
 - JSD SHALL BE HELD HARMLESS AND DOES NOT WARRANT ANY DEVIATIONS BY THE OWNER/CONTRACTOR FROM THE APPROVED CONSTRUCTION PLANS THAT MAY RESULT IN DISCIPLINARY ACTIONS BY ANY OR ALL REGULATORY AGENCIES.
 - DRAWING FOR REVIEW - NOT FOR CONSTRUCTION UNLESS OTHERWISE NOTED IN THE TITLE BLOCK.

PARKING LOT PLAN SITE INFORMATION	
SITE ADDRESS: ANDERSON STREET AND HOFFMAN STREET	
SITE ACREAGE: 5.50 ACRES	
NUMBER OF BUILDING STORIES (ABOVE GRADE): N/A	
BUILDING HEIGHT: N/A	
TYPE OF CONSTRUCTION: N/A	
TOTAL SQUARE FOOTAGE OF BUILDING: N/A	
USE OF PROPERTY: ATHLETIC FIELDS AND PARKING LOT	
GROSS SQUARE FEET OF OFFICE: N/A	
OFFICE CAPACITY: N/A	
NUMBER OF EXISTING BICYCLE STALLS SHOWN: 36	
NUMBER OF PARKING STALLS:	
SMALL CAR NEW = 75 EXISTING = 24	
LARGE CAR NEW = 102 EXISTING = 111	
ACCESSIBLE NEW = 2 EXISTING = 6	
TOTAL STALLS = 320 NEW = 178 EXISTING = 142	

- SITE PLAN NOTES**
- ALL WORK WITHIN THE PUBLIC RIGHT-OF-WAY WILL BE DESIGNED AND CONSTRUCTED BY THE CITY OF MADISON AND UNDER SEPERATE CONTRACT EXCEPT AS SHOWN.
 - ALL DIMENSIONS TO FACE OF CURB UNLESS OTHERWISE NOTED.
 - ALL RADII TO FACE OF CURB UNLESS OTHERWISE NOTED.
 - ALL CURB AND GUTTER IS 18" CURB AND GUTTER UNLESS OTHERWISE NOTED.
 - USE 4" WIDE, HIGH VISIBILITY YELLOW OR WHITE PAINT FOR STALL LINES PER MATC STANDARDS.
 - MARK AND STRIPE ADA PARKING SPACES APPROPRIATELY.
 - ALL MARKINGS TO BE YELLOW OR WHITE PAINT PER MATC STANDARDS. HANDICAP SYMBOL TO BE BLUE PAINT.
 - 6" MINIMUM DEPTH CONCRETE SLAB ON GRADE WITH #3 REBAR.
 - 30" HIGH, 6" DIAMETER CONCRETE BOLLARD PER MATC STANDARDS.
 - 2' x 4' TRUNCATED DOME SECTIONS.
 - SIGNS TO MEET MANUAL ON UNIFORM TRAFFIC CONTROL AS TO COLOR, LETTERING AND DIMENSIONS AND SHALL BE INSTALLED AT A HEIGHT OF SEVEN FEET.



JSD Professional Services, Inc.
Engineers • Surveyors • Planners

"BUILDING RELATIONSHIPS WITH A COMMITMENT TO CLIENT SATISFACTION THROUGH TRUST, QUALITY AND EXPERIENCE"

- CIVIL ENGINEERING
- SURVEYING & MAPPING
- CONSTRUCTION SERVICES
- WATER RESOURCES
- PLANNING & DEVELOPMENT
- TRANSPORTATION ENGINEERING
- LANDSCAPE ARCHITECTURE

MADISON REGIONAL OFFICE
161 HORIZON DRIVE, SUITE 101
VERONA, WISCONSIN 53593
608.848.5060 PHONE | 608.848.2255 FAX

MADISON | MILWAUKEE | KENOSHA

www.jsdinc.com

SERVICES PROVIDED TO:
MADISON COLLEGE

3550 ANDERSON ST
MADISON, WI 53704

**MADISON COLLEGE
PARKING EXPANSION**

PROJECT LOCATION:
MADISON, WI

JSD PROJECT NO.: 09-3867

SEAL/SIGNATURE:

ALTHOUGH EVERY EFFORT HAS BEEN MADE IN PREPARING THESE PLANS AND CHECKING THEM FOR ACCURACY, THE CONTRACTOR AND SUBCONTRACTORS MUST CHECK ALL DETAIL AND DIMENSIONS OF THEIR TRADE AND BE RESPONSIBLE FOR THE SAME.

DESIGN:	DOS	11-05-09
DRAWN:	DOS	11-05-09
APPROVED:	WFW	-

PLAN MODIFICATIONS:	DATE:
CITY OF MADISON	11-06-09
CITY OF MADISON	11-20-09
CITY OF MADISON	12-09-09
CITY OF MADISON	12-28-09
CITY OF MADISON	2-24-10
CITY OF MADISON	04-06-11

DIGGERS HOTLINE

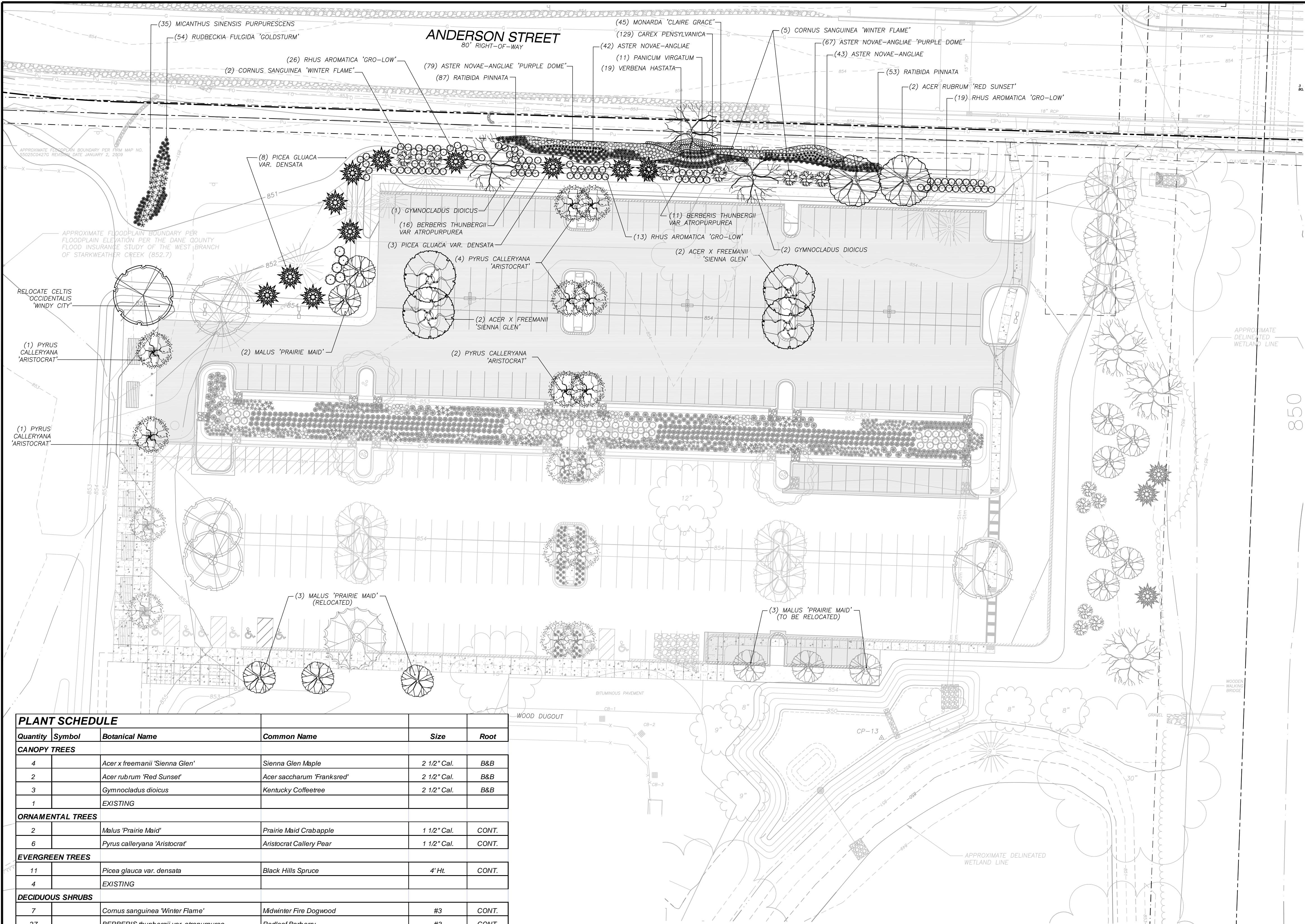
Toll Free (800) 242-8511
Milwaukee Area (414) 259-1181
Hearing Impaired TDD (800) 542-2289
www.DiggersHotline.com

SHEET TITLE:
**SITE PLAN
FINAL BUILD OUT**

SHEET NUMBER:
C-1.1

THESE PLANS AND DESIGNS ARE COPYRIGHT PROTECTED AND MAY NOT BE USED IN WHOLE OR IN PART WITHOUT THE WRITTEN CONSENT OF JSD PROFESSIONAL SERVICES, INC.

File: J:\2010\104154.dwg 10-4154 Landscape_South Layout.dwg User: dos Plotted: Apr 06, 2011 - 2:55pm Xref's:



PLANT SCHEDULE

Quantity	Symbol	Botanical Name	Common Name	Size	Root
CANOPY TREES					
4		Acer x freemanii 'Sienna Glen'	Sienna Glen Maple	2 1/2" Cal.	B&B
2		Acer rubrum 'Red Sunset'	Acer saccharum 'Franksred'	2 1/2" Cal.	B&B
3		Gymnocladus dioicus	Kentucky Coffeetree	2 1/2" Cal.	B&B
1		EXISTING			
ORNAMENTAL TREES					
2		Malus 'Prairie Maid'	Prairie Maid Crabapple	1 1/2" Cal.	CONT.
6		Pyrus calleryana 'Aristocrat'	Aristocrat Callery Pear	1 1/2" Cal.	CONT.
EVERGREEN TREES					
11		Picea glauca var. densata	Black Hills Spruce	4' Ht.	CONT.
4		EXISTING			
DECIDUOUS SHRUBS					
7		Cornus sanguinea 'Winter Flame'	Midwinter Fire Dogwood	#3	CONT.
27		BERBERIS thunbergii var. atropurpurea	Redleaf Barberry	#3	CONT.
58		RHUS aromatica 'Gro-Low'	Gro-Low Fragrant Sumac	#3	CONT.
ORNAMENTAL GRASSES					
		Miscanthus sinensis purpurescens	Japanese Flame Grass	1 GAL.	CONT.
NATIVE GRASSES					
129		Carex pensylvanica	Pennsylvania Sedge	1 GAL.	CONT.
11		Panicum virgatum	Switchgrass	1 GAL.	CONT.
NATIVE FORBS					
85		Aster novae-angliae	New England Aster	32-cell flat	PLUG
146		Aster novae-angliae 'Purple Dome'	Purple Dome Aster	32-cell flat	PLUG
81		Monarda 'Claire Grace'	Marshall's Delight Beebalm	32-cell flat	PLUG
140		Ratibida pinnata	Yellow Coneflower	32-cell flat	PLUG
54		Rudbeckia fulgida 'Goldsturm'	Goldsturm Black-eyed Susan	32-cell flat	PLUG
19		Verbena hastata	Blue Vervain	32-cell flat	PLUG

LEGEND

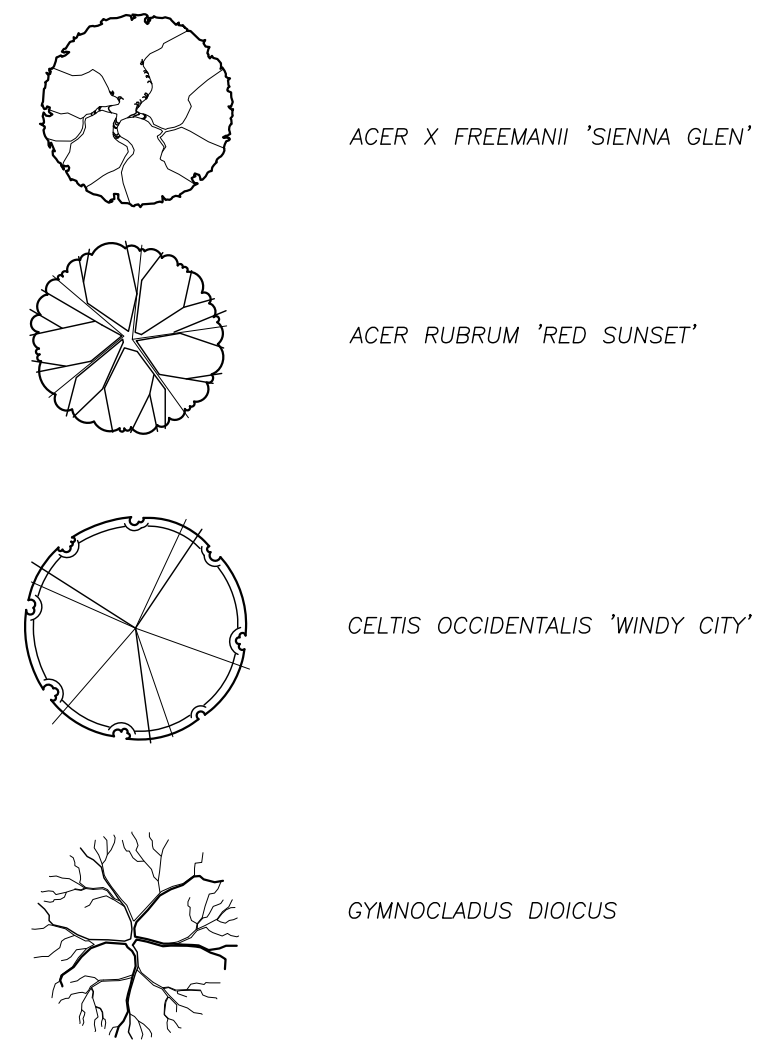
EDGING
PROJECT SITE

LANDSCAPE NOTES

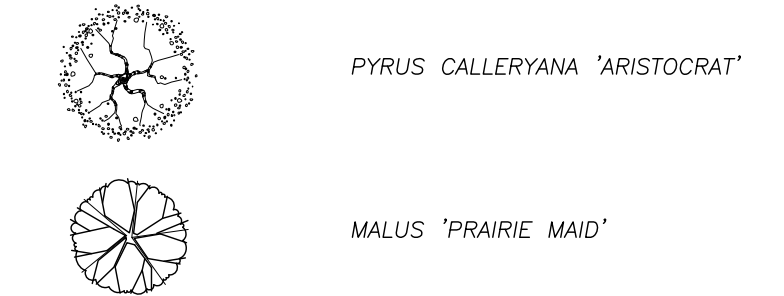
- SEE PROJECT MANUAL FOR LANDSCAPE SPECIFICATIONS AND PLANTING DETAILS.
- REFER TO THE TOPOGRAPHIC AND UTILITY MAP FOR EXISTING CONDITIONS NOTES AND LEGEND.
- JSD SHALL BE HELD HARMLESS AND DOES NOT WARRANT ANY DEVIATIONS BY THE OWNER/CONTRACTOR FROM THE APPROVED CONSTRUCTION PLANS THAT MAY RESULT IN DISCIPLINARY ACTIONS BY ANY OR ALL REGULATORY AGENCIES.
- DRAWING FOR REVIEW - NOT FOR CONSTRUCTION UNLESS OTHERWISE NOTED IN THE TITLE BLOCK.
- PRESERVE & PROTECT ALL EXISTING TREES TO REMAIN ON SITE.

LEGEND (PROPOSED PLANTS)

CANOPY TREES



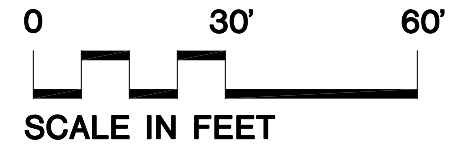
ORNAMENTAL TREES



EVERGREEN TREES



DECIDUOUS SHRUBS



"BUILDING RELATIONSHIPS WITH A COMMITMENT TO CLIENT SATISFACTION THROUGH TRUST, QUALITY AND EXPERIENCE"

- CIVIL ENGINEERING
- SURVEYING & MAPPING
- CONSTRUCTION SERVICES
- WATER RESOURCES
- PLANNING & DEVELOPMENT
- TRANSPORTATION ENGINEERING
- LANDSCAPE ARCHITECTURE

MADISON REGIONAL OFFICE
161 HORIZON DRIVE, SUITE 101
VERONA, WISCONSIN 53593
608.848.5060 PHONE | 608.848.2255 FAX

MADISON | MILWAUKEE | KENOSHA

www.jsdinc.com

SERVICES PROVIDED TO:
MADISON COLLEGE

3550 ANDERSON ST
MADISON, WI 53704

**MADISON COLLEGE
PARKING EXPANSION**

PROJECT LOCATION:

MADISON, WI

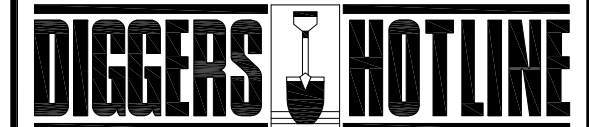
JSD PROJECT NO.: 09-3867

SEAL/SIGNATURE:

ALTHOUGH EVERY EFFORT HAS BEEN MADE IN PREPARING THESE PLANS AND CHECKING THEM FOR ACCURACY, THE CONTRACTOR AND SUBCONTRACTORS MUST CHECK ALL DETAIL AND DIMENSIONS OF THEIR TRADE AND BE RESPONSIBLE FOR THE SAME.

DESIGN:	SCL	11-5-09
DRAWN:	SCL	11-5-09
APPROVED:	MAS	05-05-10

PLAN MODIFICATIONS:	DATE:
CITY OF MADISON	12-09-09
CITY OF MADISON	12-28-09
CITY OF MADISON	2-24-10
CITY OF MADISON	4-6-10
CITY OF MADISON	4-15-10
CLIENT REVIEW	4-23-10
BID DOCUMENT	4-29-10
CONSTRUCTION BULLETIN #1	7-02-10
DRC REVIEW	4-08-11



Toll Free (800) 242-8511
Milwaukee Area (414) 259-1181
Hearing Impaired TDD (800) 542-2289
www.DiggersHotline.com

SHEET TITLE:

LANDSCAPE PLAN

SHEET NUMBER:

L-1.0

THESE PLANS AND DESIGNS ARE COPYRIGHT PROTECTED AND MAY NOT BE USED IN WHOLE OR IN PART WITHOUT THE WRITTEN CONSENT OF JSD PROFESSIONAL SERVICES, INC.