

Architect/Engineer:

McCoy ENGINEERING
 8410 Wilshire Rd., #719-119, Waukegan, IL 60087
 Phone: 815-494-1113 Fax: 815-494-0774
 Architectural & Structural • Planning & Survey
 Commercial • Industrial • Institutional • Residential

General Contractor:

SUPREME STRUCTURES
 4487 Robertson Rd., Mead, WI 53114

Site Consultant:

HOMBURG CONTRACTORS, INC.

8500 Monona Drive
 Monona, WI 53116
 (608) 224-8907
 (608) 844-0113 Fax

PROJECT

TOYOTA
 3501 LANCASTER DRIVE
 MADISON, WISCONSIN

ISSUED
 2-20-2007 PLAN COMMISSION SUBMITTAL

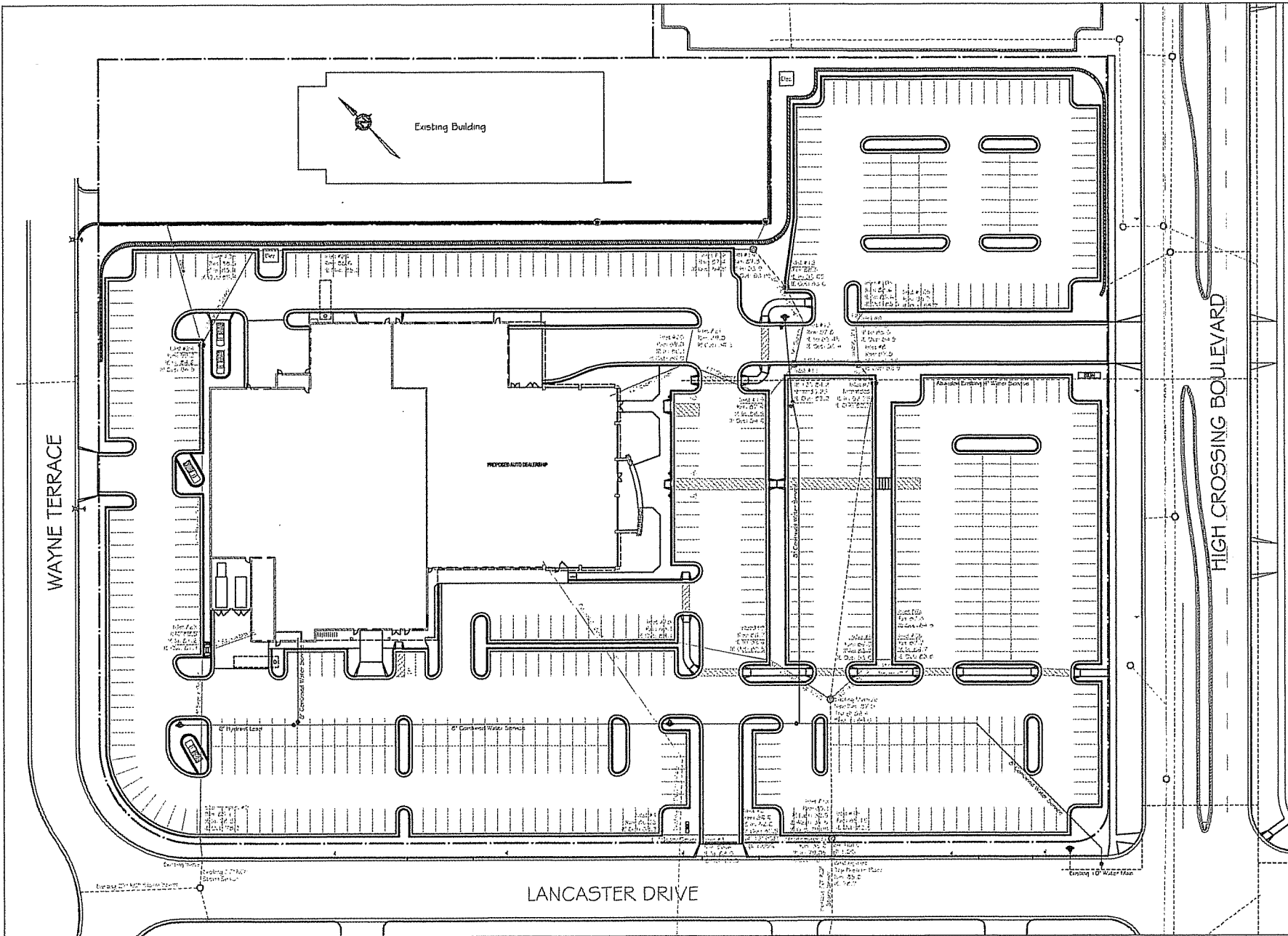
REVISED

© 2007, Homburg Contractors, Inc.

GRADING PLAN

SCALE: 1" = 30'

C 2.0



Architect/Engineer:

McCOY ENGINEERING
 4440 Wilson Rd., STE 116, Monona, WI, 53597
 Phone: 608-831-8710 Fax: 608-831-0723
 Architecture & Interiors • Planning & Design
 Commercial • Industrial • Institutional • Residential

General Contractor:

SUPREME STRUCTURES
 4487 Robertson Rd., Madison, WI 53714

Site Consultant:

HOMBURG CONTRACTORS, INC.

2280 Monona Drive
 Monona, WI 53110
 (608) 224-6087
 (608) 244-9113 Fax

PROJECT


TOYOTA
 3501 LANCASTER DRIVE
 MADISON, WI

ISSUED
 2/29/2007 PLAN COMMISSION SUBMITTAL

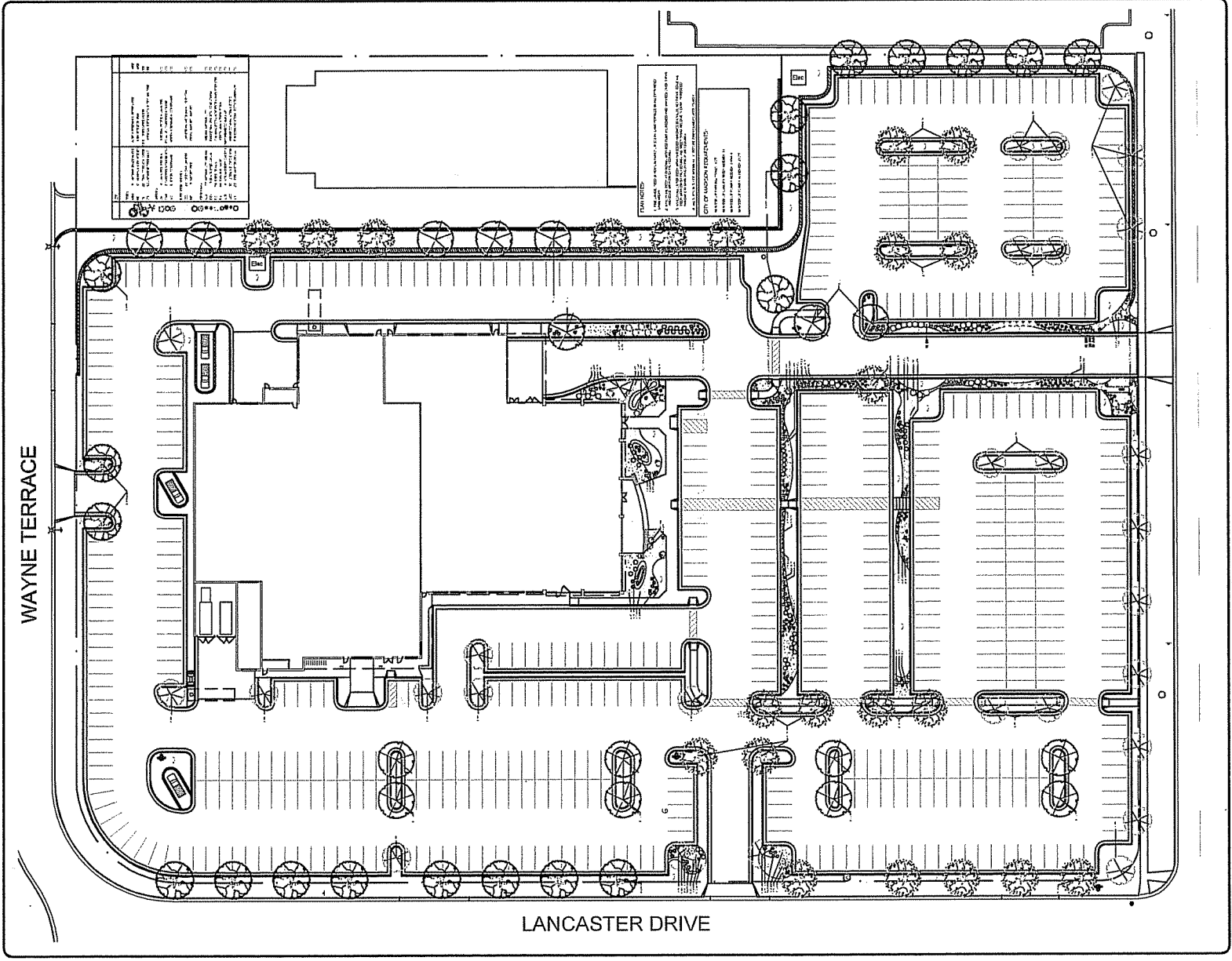
REVISED

© 2007, Homburg Contractors, Inc.
 All Rights Reserved

UTILITY PLAN

SCALE: 1" = 30'

C 3.0



WAYNE TERRACE

LANCASTER DRIVE

NO.	DESCRIPTION
1	EXISTING ASPHALT DRIVEWAY
2	EXISTING ASPHALT DRIVEWAY
3	EXISTING ASPHALT DRIVEWAY
4	EXISTING ASPHALT DRIVEWAY
5	EXISTING ASPHALT DRIVEWAY
6	EXISTING ASPHALT DRIVEWAY
7	EXISTING ASPHALT DRIVEWAY
8	EXISTING ASPHALT DRIVEWAY
9	EXISTING ASPHALT DRIVEWAY
10	EXISTING ASPHALT DRIVEWAY
11	EXISTING ASPHALT DRIVEWAY
12	EXISTING ASPHALT DRIVEWAY
13	EXISTING ASPHALT DRIVEWAY
14	EXISTING ASPHALT DRIVEWAY
15	EXISTING ASPHALT DRIVEWAY
16	EXISTING ASPHALT DRIVEWAY
17	EXISTING ASPHALT DRIVEWAY
18	EXISTING ASPHALT DRIVEWAY
19	EXISTING ASPHALT DRIVEWAY
20	EXISTING ASPHALT DRIVEWAY
21	EXISTING ASPHALT DRIVEWAY
22	EXISTING ASPHALT DRIVEWAY
23	EXISTING ASPHALT DRIVEWAY
24	EXISTING ASPHALT DRIVEWAY
25	EXISTING ASPHALT DRIVEWAY
26	EXISTING ASPHALT DRIVEWAY
27	EXISTING ASPHALT DRIVEWAY
28	EXISTING ASPHALT DRIVEWAY
29	EXISTING ASPHALT DRIVEWAY
30	EXISTING ASPHALT DRIVEWAY
31	EXISTING ASPHALT DRIVEWAY
32	EXISTING ASPHALT DRIVEWAY
33	EXISTING ASPHALT DRIVEWAY
34	EXISTING ASPHALT DRIVEWAY
35	EXISTING ASPHALT DRIVEWAY
36	EXISTING ASPHALT DRIVEWAY
37	EXISTING ASPHALT DRIVEWAY
38	EXISTING ASPHALT DRIVEWAY
39	EXISTING ASPHALT DRIVEWAY
40	EXISTING ASPHALT DRIVEWAY
41	EXISTING ASPHALT DRIVEWAY
42	EXISTING ASPHALT DRIVEWAY
43	EXISTING ASPHALT DRIVEWAY
44	EXISTING ASPHALT DRIVEWAY
45	EXISTING ASPHALT DRIVEWAY
46	EXISTING ASPHALT DRIVEWAY
47	EXISTING ASPHALT DRIVEWAY
48	EXISTING ASPHALT DRIVEWAY
49	EXISTING ASPHALT DRIVEWAY
50	EXISTING ASPHALT DRIVEWAY

PLAN NOTES:
 1. ALL DIMENSIONS ARE TO FACE UNLESS OTHERWISE NOTED.
 2. ALL DIMENSIONS ARE TO FACE UNLESS OTHERWISE NOTED.
 3. ALL DIMENSIONS ARE TO FACE UNLESS OTHERWISE NOTED.
 4. ALL DIMENSIONS ARE TO FACE UNLESS OTHERWISE NOTED.
 5. ALL DIMENSIONS ARE TO FACE UNLESS OTHERWISE NOTED.
 6. ALL DIMENSIONS ARE TO FACE UNLESS OTHERWISE NOTED.
 7. ALL DIMENSIONS ARE TO FACE UNLESS OTHERWISE NOTED.
 8. ALL DIMENSIONS ARE TO FACE UNLESS OTHERWISE NOTED.
 9. ALL DIMENSIONS ARE TO FACE UNLESS OTHERWISE NOTED.
 10. ALL DIMENSIONS ARE TO FACE UNLESS OTHERWISE NOTED.
 11. ALL DIMENSIONS ARE TO FACE UNLESS OTHERWISE NOTED.
 12. ALL DIMENSIONS ARE TO FACE UNLESS OTHERWISE NOTED.
 13. ALL DIMENSIONS ARE TO FACE UNLESS OTHERWISE NOTED.
 14. ALL DIMENSIONS ARE TO FACE UNLESS OTHERWISE NOTED.
 15. ALL DIMENSIONS ARE TO FACE UNLESS OTHERWISE NOTED.
 16. ALL DIMENSIONS ARE TO FACE UNLESS OTHERWISE NOTED.
 17. ALL DIMENSIONS ARE TO FACE UNLESS OTHERWISE NOTED.
 18. ALL DIMENSIONS ARE TO FACE UNLESS OTHERWISE NOTED.
 19. ALL DIMENSIONS ARE TO FACE UNLESS OTHERWISE NOTED.
 20. ALL DIMENSIONS ARE TO FACE UNLESS OTHERWISE NOTED.
 21. ALL DIMENSIONS ARE TO FACE UNLESS OTHERWISE NOTED.
 22. ALL DIMENSIONS ARE TO FACE UNLESS OTHERWISE NOTED.
 23. ALL DIMENSIONS ARE TO FACE UNLESS OTHERWISE NOTED.
 24. ALL DIMENSIONS ARE TO FACE UNLESS OTHERWISE NOTED.
 25. ALL DIMENSIONS ARE TO FACE UNLESS OTHERWISE NOTED.
 26. ALL DIMENSIONS ARE TO FACE UNLESS OTHERWISE NOTED.
 27. ALL DIMENSIONS ARE TO FACE UNLESS OTHERWISE NOTED.
 28. ALL DIMENSIONS ARE TO FACE UNLESS OTHERWISE NOTED.
 29. ALL DIMENSIONS ARE TO FACE UNLESS OTHERWISE NOTED.
 30. ALL DIMENSIONS ARE TO FACE UNLESS OTHERWISE NOTED.
 31. ALL DIMENSIONS ARE TO FACE UNLESS OTHERWISE NOTED.
 32. ALL DIMENSIONS ARE TO FACE UNLESS OTHERWISE NOTED.
 33. ALL DIMENSIONS ARE TO FACE UNLESS OTHERWISE NOTED.
 34. ALL DIMENSIONS ARE TO FACE UNLESS OTHERWISE NOTED.
 35. ALL DIMENSIONS ARE TO FACE UNLESS OTHERWISE NOTED.
 36. ALL DIMENSIONS ARE TO FACE UNLESS OTHERWISE NOTED.
 37. ALL DIMENSIONS ARE TO FACE UNLESS OTHERWISE NOTED.
 38. ALL DIMENSIONS ARE TO FACE UNLESS OTHERWISE NOTED.
 39. ALL DIMENSIONS ARE TO FACE UNLESS OTHERWISE NOTED.
 40. ALL DIMENSIONS ARE TO FACE UNLESS OTHERWISE NOTED.
 41. ALL DIMENSIONS ARE TO FACE UNLESS OTHERWISE NOTED.
 42. ALL DIMENSIONS ARE TO FACE UNLESS OTHERWISE NOTED.
 43. ALL DIMENSIONS ARE TO FACE UNLESS OTHERWISE NOTED.
 44. ALL DIMENSIONS ARE TO FACE UNLESS OTHERWISE NOTED.
 45. ALL DIMENSIONS ARE TO FACE UNLESS OTHERWISE NOTED.
 46. ALL DIMENSIONS ARE TO FACE UNLESS OTHERWISE NOTED.
 47. ALL DIMENSIONS ARE TO FACE UNLESS OTHERWISE NOTED.
 48. ALL DIMENSIONS ARE TO FACE UNLESS OTHERWISE NOTED.
 49. ALL DIMENSIONS ARE TO FACE UNLESS OTHERWISE NOTED.
 50. ALL DIMENSIONS ARE TO FACE UNLESS OTHERWISE NOTED.

THESE PLANS WERE PREPARED BY THE ARCHITECT FOR THE CITY OF LANCASTER, CALIFORNIA. THE ARCHITECT HAS CONDUCTED VISUAL VERIFICATION OF THE EXISTING CONDITIONS AND HAS FOUND THEM TO BE AS SHOWN ON THESE PLANS. THE ARCHITECT HAS CONDUCTED VISUAL VERIFICATION OF THE EXISTING CONDITIONS AND HAS FOUND THEM TO BE AS SHOWN ON THESE PLANS. THE ARCHITECT HAS CONDUCTED VISUAL VERIFICATION OF THE EXISTING CONDITIONS AND HAS FOUND THEM TO BE AS SHOWN ON THESE PLANS.

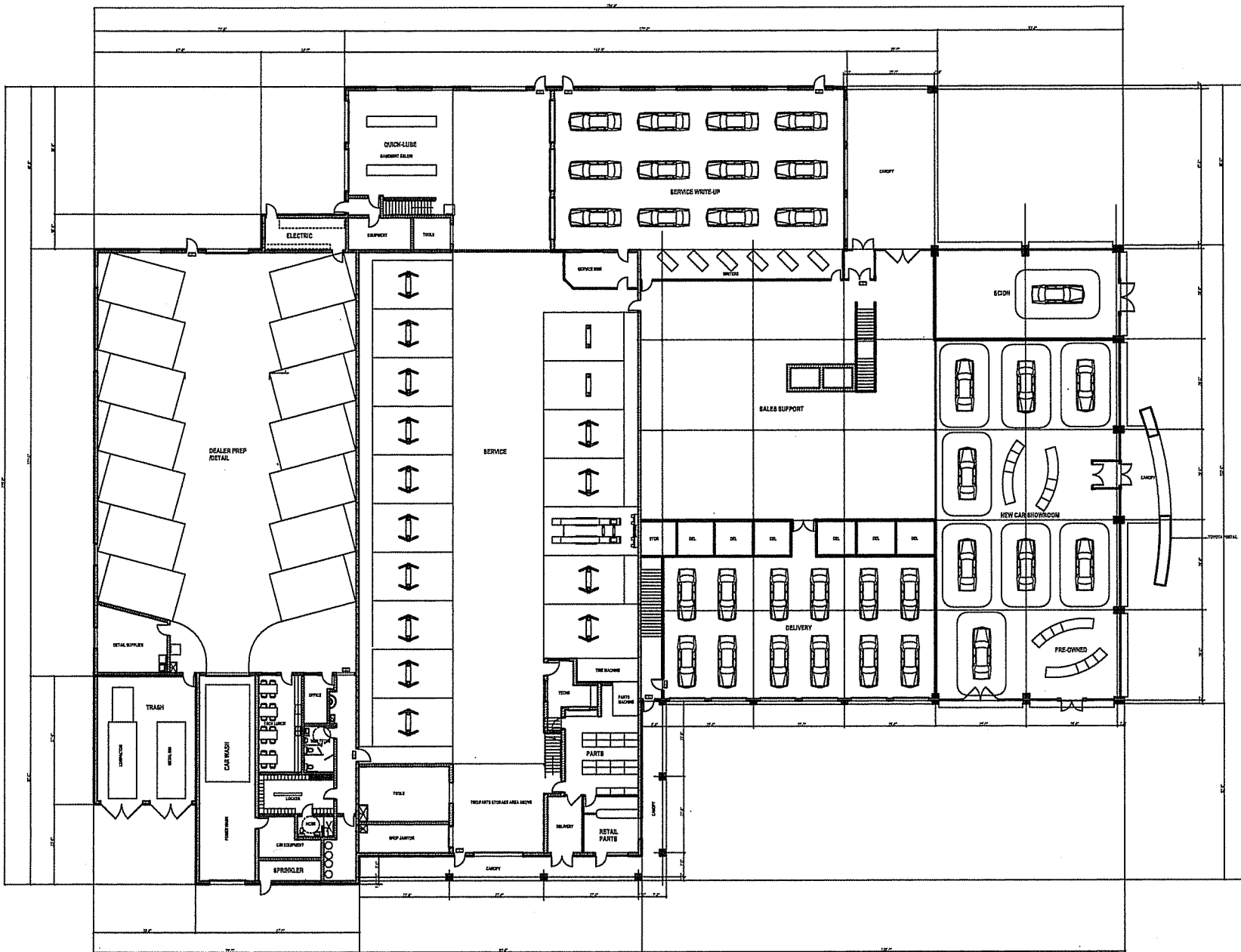
FOR MORE INFORMATION, CONTACT:
 SUPREME STRUCTURES
 10000 W. 15th Ave., Suite 100
 Denver, CO 80202
 303.751.1111
 WWW.SUPREMESTRUCTURES.COM




TOYOTA/ SUPREME STRUCTURES

S. D. SUPREME, L.P.
 143-07
 S. D. SUPREME, 2/07
 1" = 30'-0"
 TYPICAL SCALE PLAN

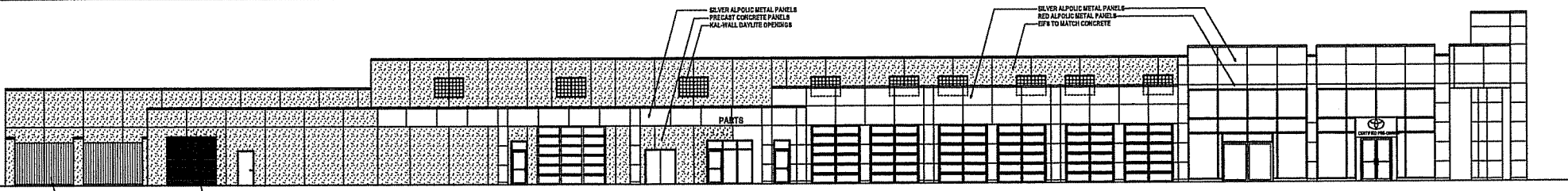




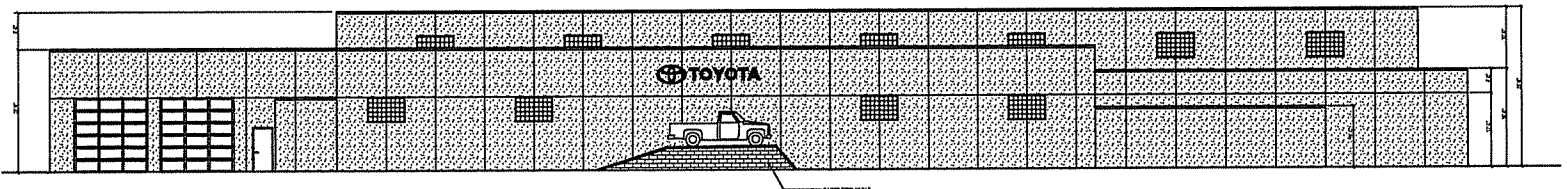
OVERALL FLOOR PLAN


McCOY ENGINEERING		DESIGN BY:
3501 LANCASTER DRIVE, MADISON, WISCONSIN 53711 PHONE: 608-441-2718 FAX: 608-441-2733		APPROVED BY:
PROJECT: JON LANCASTER TOYOTA		DATE:
LOCATION: 3501 LANCASTER DRIVE MADISON, WI		SCALE: AS SHOWN
SHEET TITLE: OVERALL FLOOR PLAN		DATE: T0513
		SHEET NO: A-2

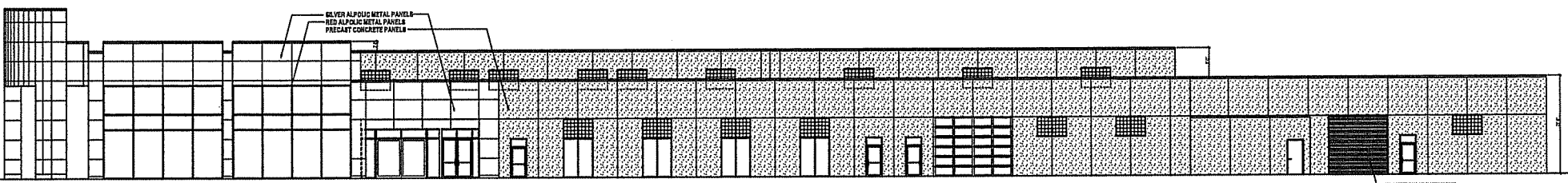
© 2008 McCoy Engineering, Inc. All rights reserved. This drawing is the property of McCoy Engineering, Inc. and is not to be reproduced, stored in a retrieval system, or transmitted in any form or by any means, electronic, mechanical, photocopying, recording, or by any information storage and retrieval system, without the prior written permission of McCoy Engineering, Inc.



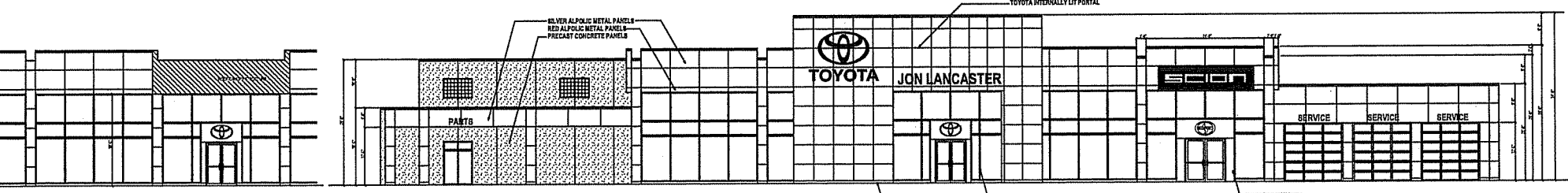
SOUTH ELEVATION
1/2" = 1'-0"



WEST ELEVATION
1/2" = 1'-0"



NORTH ELEVATION
1/2" = 1'-0"



EAST ELEVATION
1/2" = 1'-0"

EAST ELEVATION BEHIND PORTAL
1/2" = 1'-0"

McCOY ENGINEERING 3545 BERRY AVE. SUITE 115, MADISON, WISCONSIN PHONE: 608-261-0715 FAX: 608-261-0733		DRAWN BY: APPROVED BY: DATE:
		PROJECT: JON LANCASTER TOYOTA
LOCATION: 3501 LANCASTER DRIVE MADISON, WI	SCALE: As Shown	DRAWING NO.: T0513
WEST TITLE: ELEVATIONS	WEST NO.: A-3	

© COPYRIGHT
 All rights reserved. No part of this drawing may be reproduced, stored in a retrieval system, or transmitted in any form or by any means, electronic, mechanical, photocopying, recording, or by any information storage and retrieval system, without the prior written permission of McCoy Engineering, Inc.