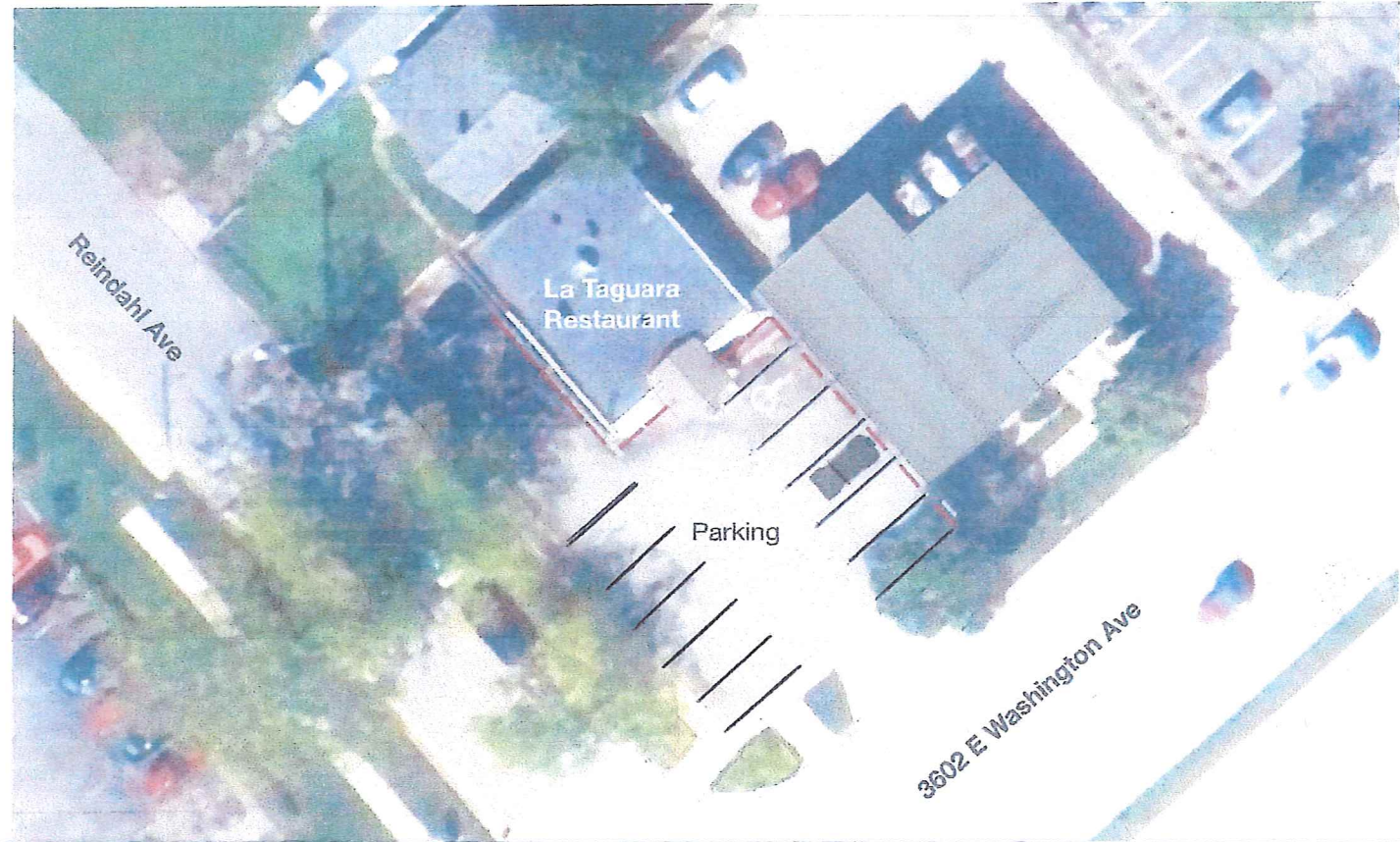
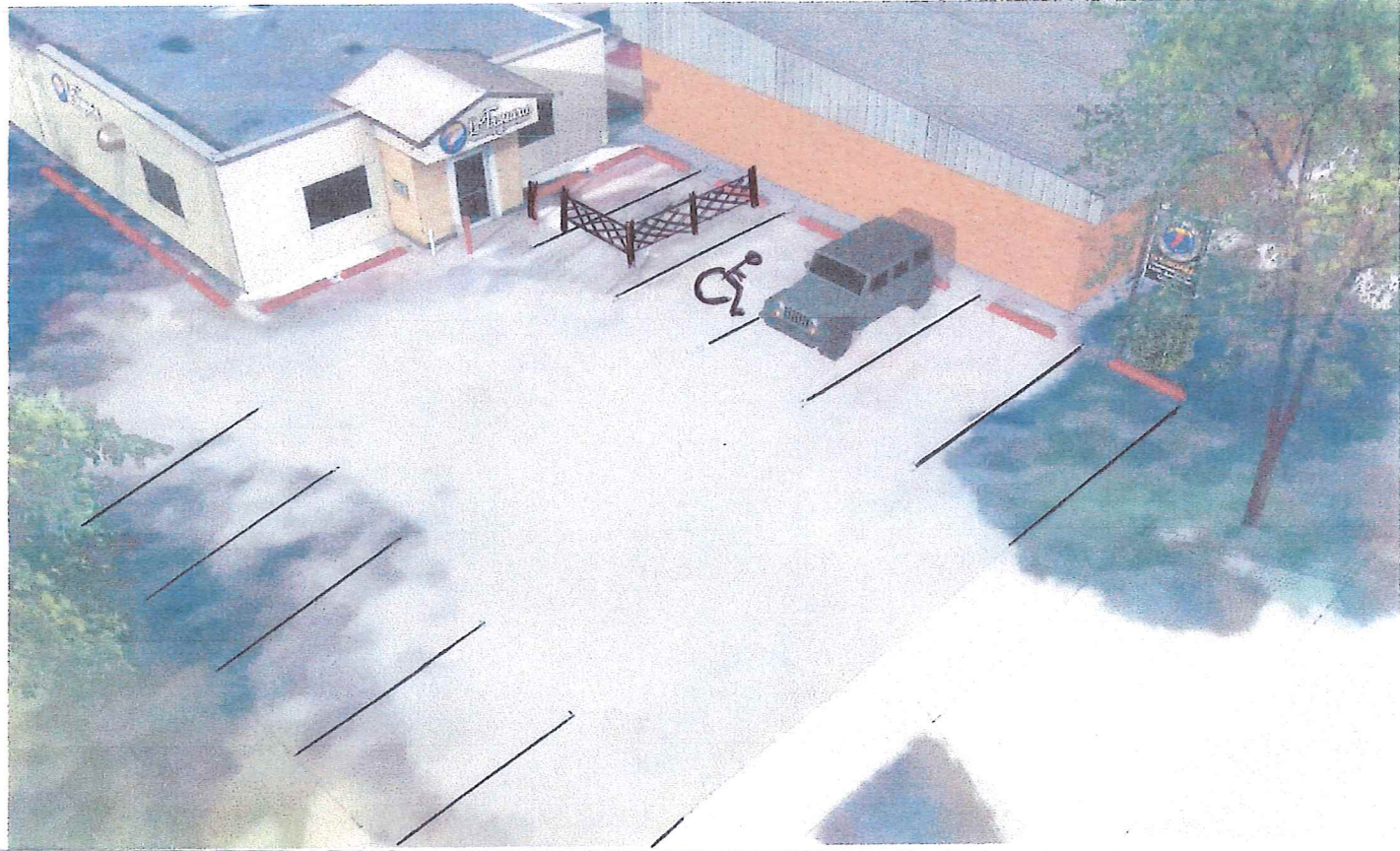


Existing Parking.



Proposed outdoor Seating Area.



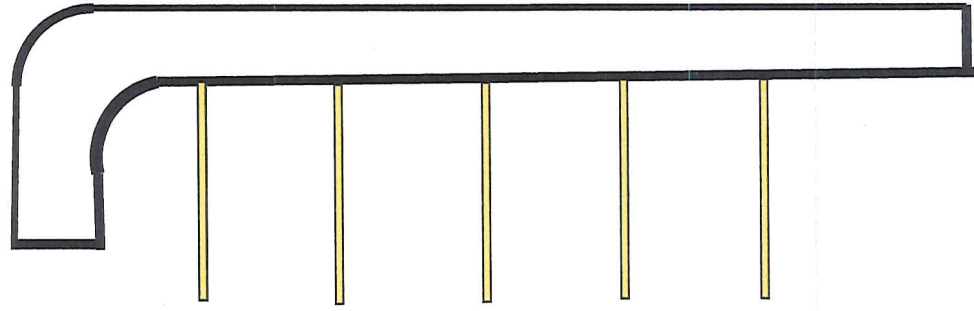


E Washington Avenue

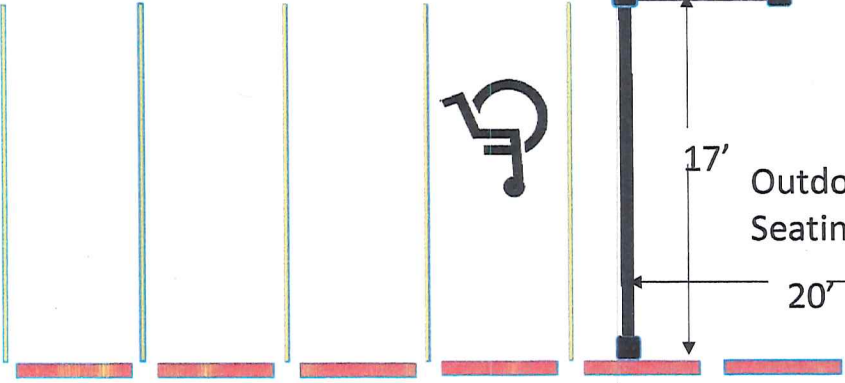
City Bound Lane



Reindahl Ave.



Parking Lot



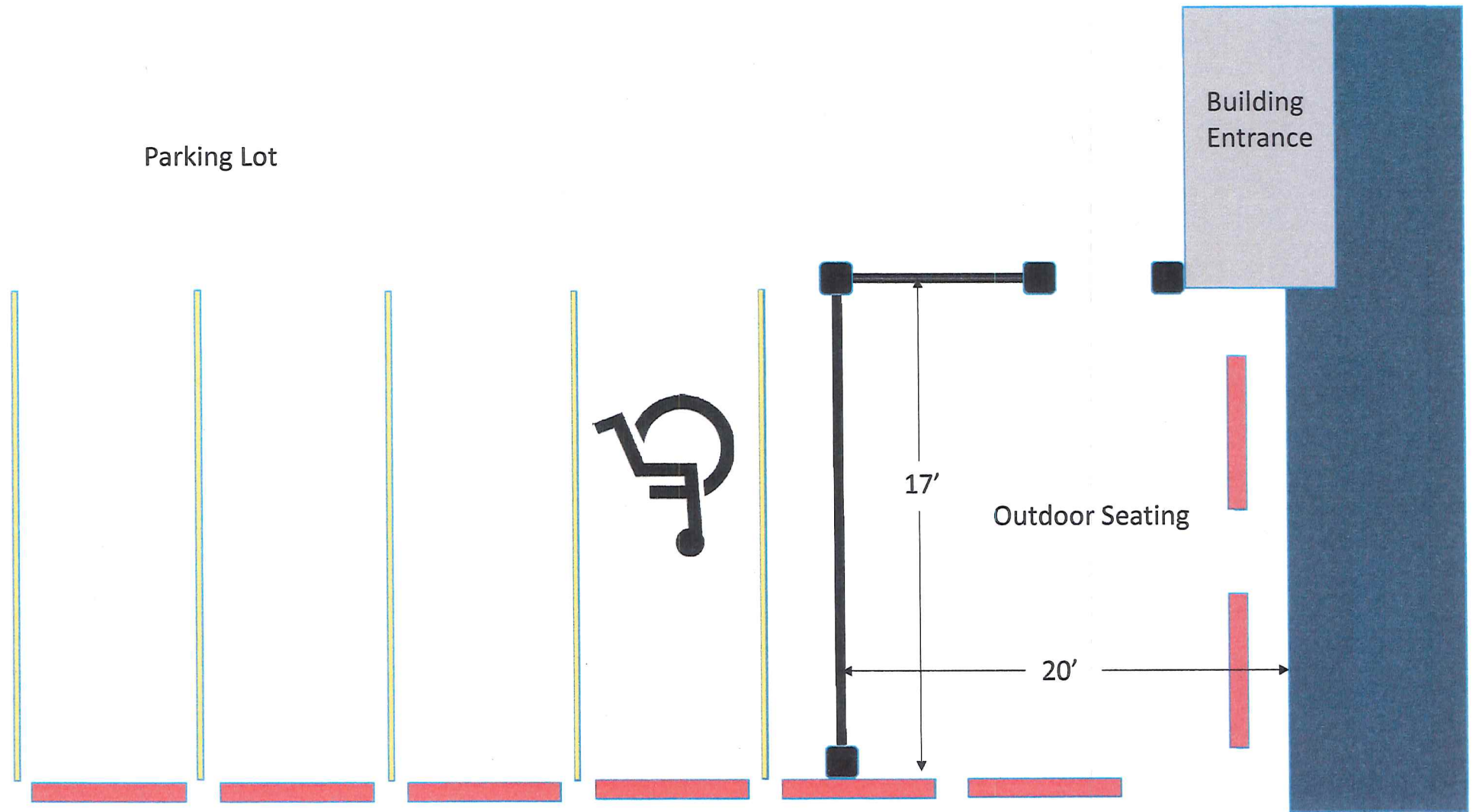
La Taguara Building

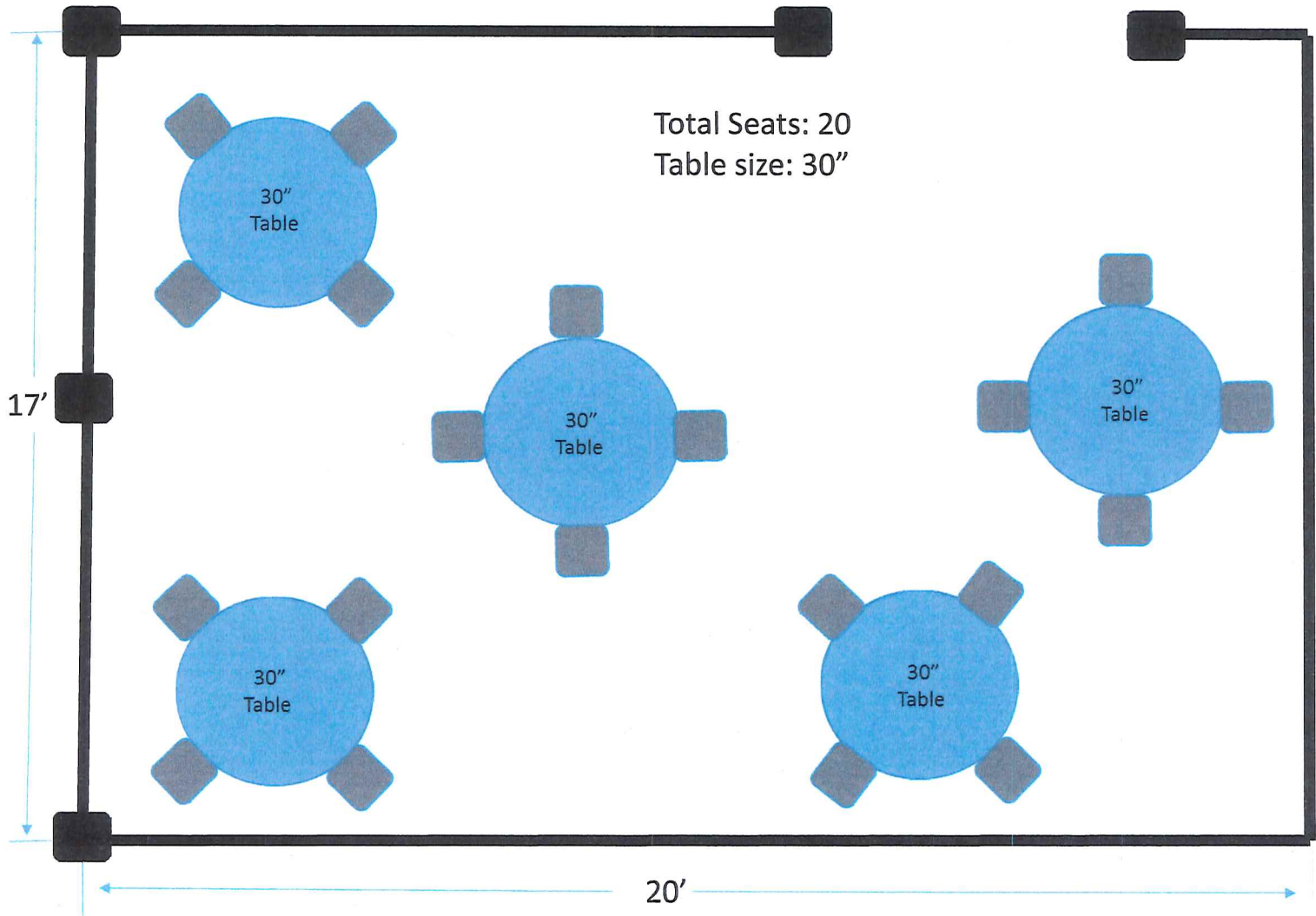
Outdoor Seating

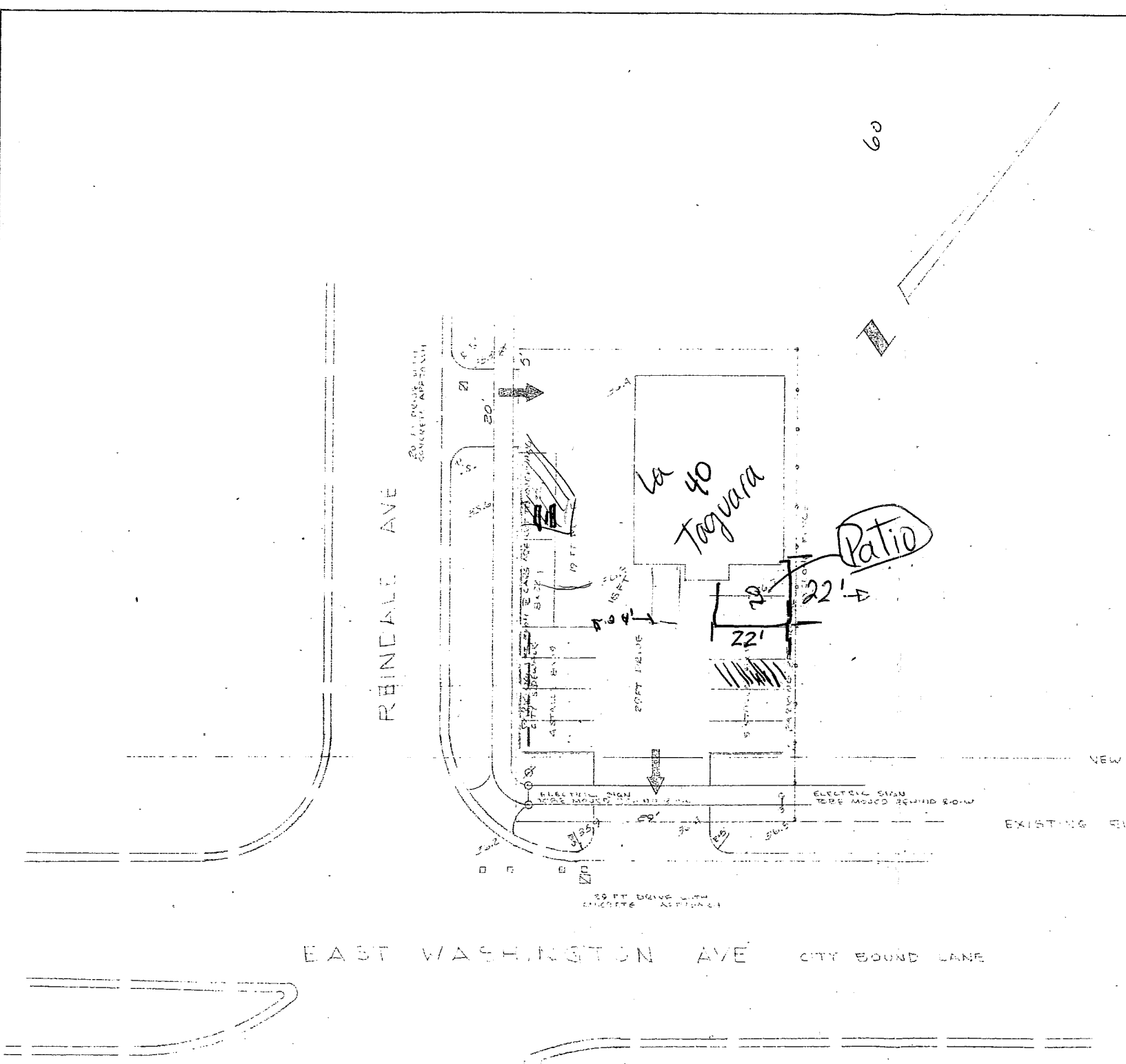
17'

20'

Parking Lot







- LEGEND
- FLOW OF TRAFFIC
 - POWER POLE
 - ELECTRIC SIGN
 - GUARD RAIL
 - STORM SEWER CATCH BASIN
 - CURB CURVA

NOTE

1. ELEVATIONS SHOWN ARE EXISTING.
2. ELECTRICAL SYMBOLS TO BE PLACED PERMANENTLY AND TO BE IN ACCORDANCE WITH SIGN REGULATIONS.
3. CURB STOPS BETWEEN CITY SIDEWALK AND PARKING SPACES.

ZONING APPROVED
 Date 5-21-71
 Zoning Administrator
 MADISON - WISCONSIN

Approved entrances must be constructed by a licensed cement finisher.

PARKING LOT PLAN APPROVED
 in accordance with Section 10.08 of the General Ordinances
 CITY OF MADISON

DRAINAGE APPROVAL NOT NECESSARY
 EX 137.142

5/21/71
James M. McDally, Capt.
 TRAFFIC ENGINEERING DEPT.
 POLICE DEPT.

REVISED MAY 3, 1971

ANTHONY THOUSAND PROFESSIONAL LAND SURVEYOR
 MADISON, WISCONSIN

PARKING LOT DRIVEWAY LOCATIONS
 LOT 1 & 2 BLK 1 CLYDE GALLAGHER SUB.
 CITY OF MADISON, DANE COUNTY, WIS.

TAX PARCEL 0810-321-0108-A
 2502 EAST WASHINGTON AVE
 EDWARD DANIELS
 7% THE JOKER TAVERN
 2502 EAST WASHINGTON AVE
 MADISON, WISCONSIN

DWG. BY JCM
 CHKD. BY
 FB

SCALE 1 INCH = 20 FT DATE MAY 31, 1971 DWG. NO.