



File: J:\2010\104154\dwg\10-4154_Civil Design_North_Lot.dwg Layout: AREA EXHIBIT User: jken Plotted: Apr 05, 2011 - 11:43am

JSD Professional Services, Inc.
Engineers • Surveyors • Planners

MADISON REGIONAL OFFICE
 161 HORIZON DRIVE, SUITE 101
 VERONA, WISCONSIN 53593
 608.848.5060 PHONE | 608.848.2255 FAX

www.jsdinc.com

PROJECT:
**MADISON COLLEGE
 PARKING EXPANSION
 (NORTH)**
 MADISON, WI

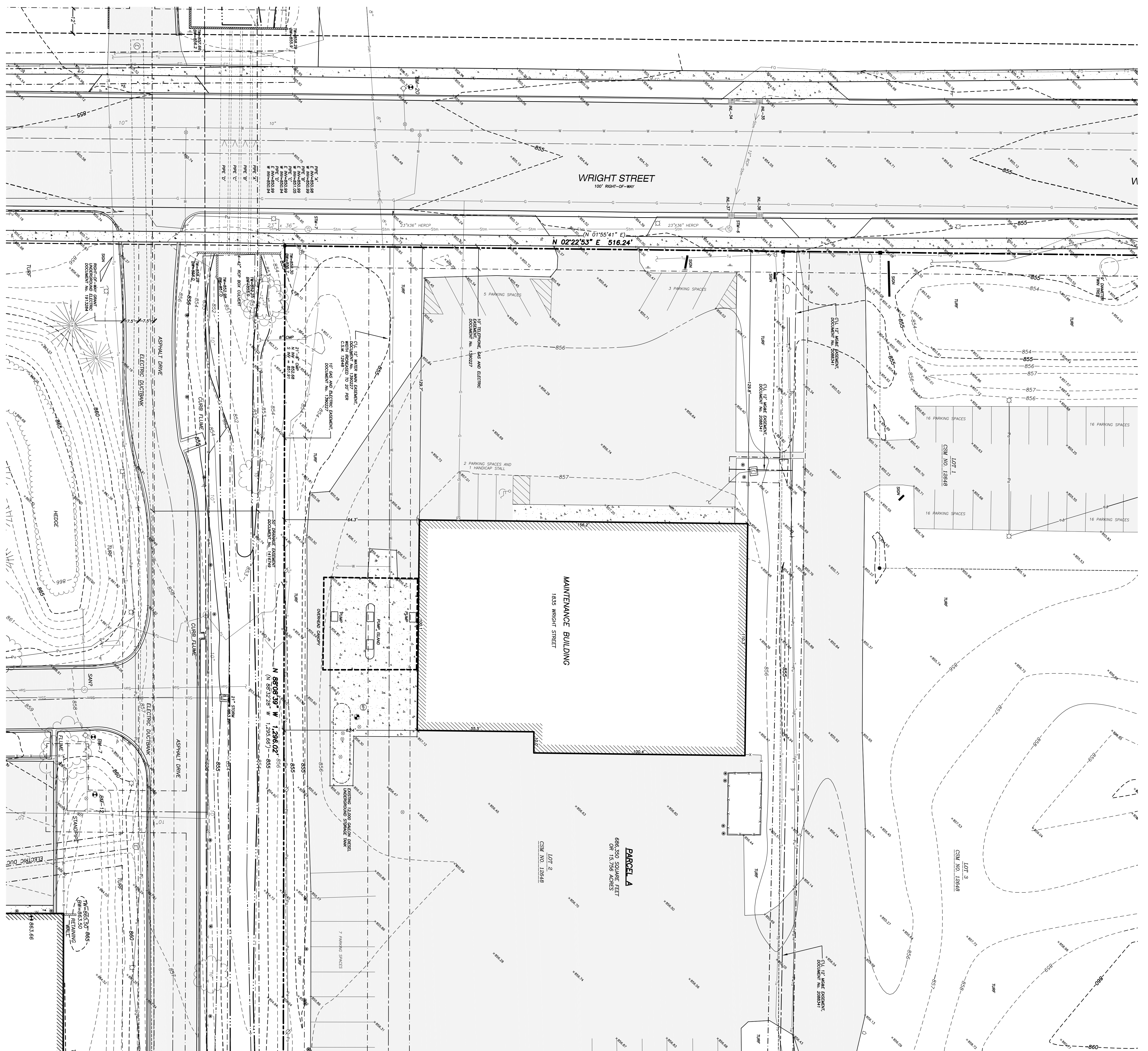
SHEET TITLE:
**AREA - WIDE
 LOCATION MAP**

JSD PROJECT NUMBER:
 10-4154

DRAWN BY: JJK APPROVED: DJH

DATE:
 04-05-2011

SHEET NUMBER:



DRAFT

LEGEND

- ✕ REBAR FOUND
- PARCEL BOUNDARY
- RIGHT-OF-WAY LINE
- PLATTED LOT LINE
- EASEMENT LINE
- FENCE LINE
- FLAG POLE
- MAIL BOX
- SIGN
- DOE OF WATER
- DELIMITED WETLANDS
- CONCRETE CURB & GUTTER
- EDGE OF PAVEMENT
- SIDE OF PAVEMENT
- WATER LINE
- STORM SEWER
- MANUAL GAS
- OVERHEAD ELECTRIC
- OVERHEAD TELEPHONE
- UNDERGROUND TELEPHONE
- FIBER OPTIC
- INTERIOR CONTROL
- SPOT ELEVATION
- BUILDING
- BRIMACOUS PAVEMENT
- CONCRETE PAVEMENT
- TOP OF WALL
- TW
- BOTTOM OF WALL
- HANDICAP PARKING
- BM

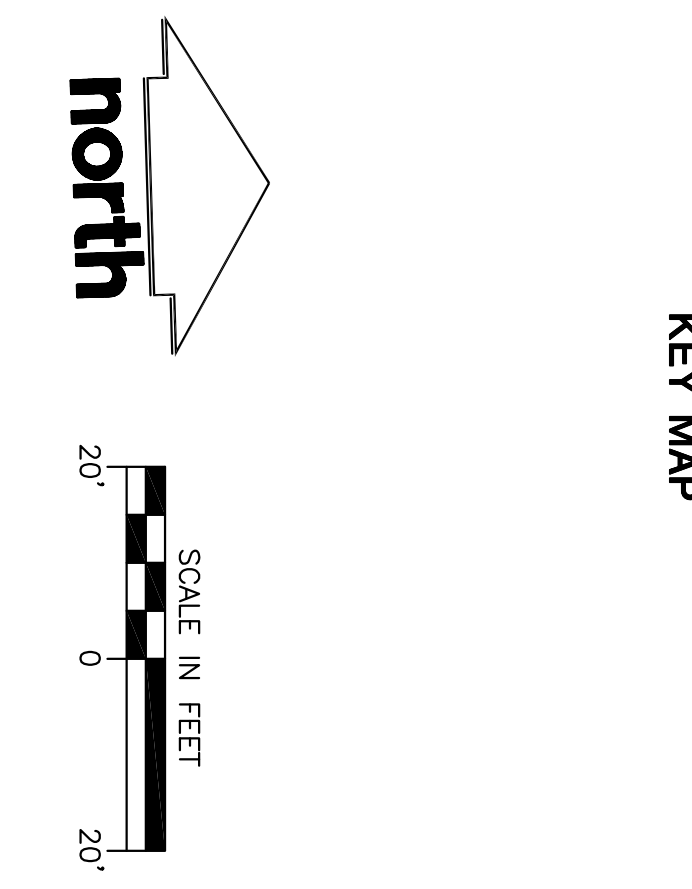
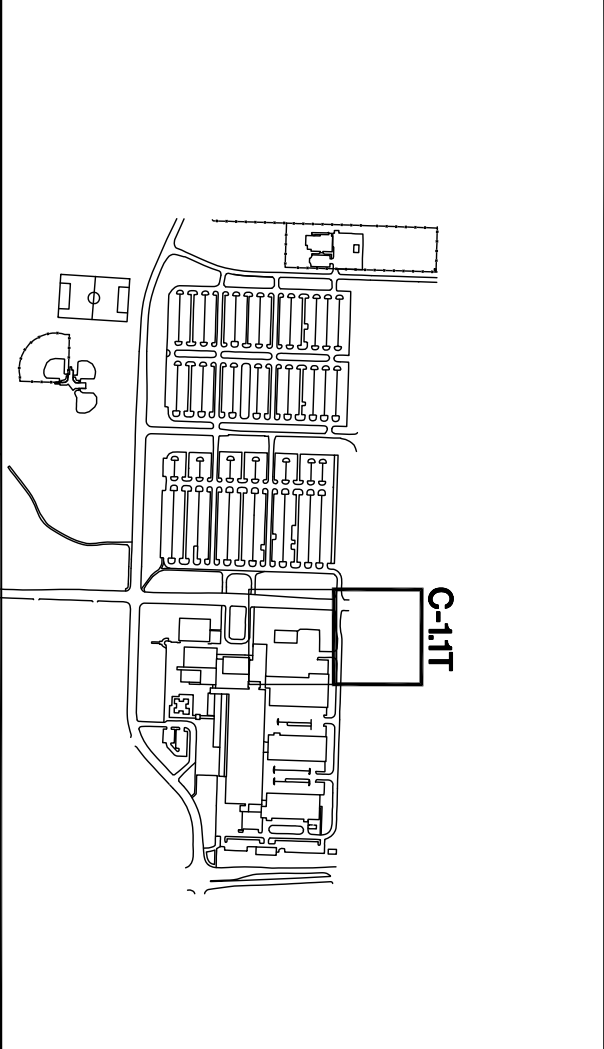
NOTES

1. THE HORIZONTAL DATUM FOR THIS MAP IS THE WISCONSIN COUNTY COORDINATE SYSTEM (WCCS)-DANE ZONE.
2. THE VERTICAL DATUM FOR THESE ELEVATIONS IS THE NORTH AMERICAN VERTICAL DATUM OF 1988. (NAD 83). THE REFERENCE BENCHMARK FOR THIS SURVEY IS THE STATION MARKED BY STATION NUMBER 28, TOWN 8 NORTH, RANGE 20 WEST, COUNTY OF DANE, WISCONSIN.
3. CONTROL INTERVAL IS ONE FOOT.
4. FIELD WORK PERFORMED BY JSD PROFESSIONAL SERVICES, INC. IN NOVEMBER 2019.
5. SURVEYS, UTILITIES AND FEATURES SHOWN ON THIS MAP HAVE BEEN APPROVED BY LOCAL SURVEY, UTILITIES AND APPLICABLE AGENCIES. LOCATING ORDERS HOTLINE FIELD WARNINGS AND BY REFERENCE TO UTILITY 2019(0402821) MAPS. DODGE'S HOTLINE TICKET NO. 2019(0402821) & 2019(0402821).
6. BEFORE EXCAVATION, APPROPRIATE UTILITY COMPANIES SHOULD BE CONTACTED FOR EXACT LOCATION OF UNDERGROUND UTILITIES CONTACT DODGE'S HOTLINE AT 1.800.424.8311.
7. THE ACCURACY OF THE BENCHMARKS SHOWN ON THIS MAP SHALL BE DETERMINED BY THE USER OF THIS MAP. THE USER SHALL BE RESPONSIBLE FOR VERIFYING WITHOUT THE ACCURACY OF THESE BENCHMARKS. THESE BENCHMARKS HAVE BEEN VERIFIED BY JSD PROFESSIONAL SERVICES, INC. IN NOVEMBER 2019.
8. SPOT ELEVATIONS SHOWN REFERENCE THE TOP BACK OF CURB, WHERE PRESENT.
9. THIS PARCEL IS SUBJECT TO ALL EASEMENTS AND AGREEMENTS, BOTH AS RECORDED AND UNRECORDED.
10. PRELIMINARY UTILITIES NOT MARKED IN THE FIELD OR PROVIDED IN RECORD DOCUMENTS, MAY NOT BE DEPICTED ON THIS SURVEY.

BENCH MARK	ELEVATION	DESCRIPTION
BM-7	862.49	100' NUT ON W. SIDE OF MADISON COLLEGE BUILDING ALONG DRIVE ENTRANCE
BM-12	863.32	7/4" REBAR POINT NUMBER 40.
BM-20	868.17	100' NUT ON W. SIDE OF WRIGHT STREET

ALLET ID	RAW ELEVATION	INVERT	ELEVATION/PIPE SIZE	PIPE TYPE
INL-34	854.00	N	851.63 12"	RP2
INL-35	853.94	S	851.64 12"	RP2
INL-36	853.72	W	851.91 8"	RP2
INL-37	853.74	E	851.39 15"	RP2
		N	851.39 12"	RP2
		N	851.37 12"	RP2

STRUCT ID	RAW ELEVATION	INVERT	ELEVATION/PIPE SIZE	PIPE TYPE
STM-6	854.63	S	851.38 24"x30"	RP2
STM-7	855.90	S	851.37 15"	RP2
		N	855.90	



JSD Professional Services, Inc.
 Planners • Surveyors • Engineers
 BUILDING RELIABLE WITH A COMMITMENT TO EXCELLENCE THROUGH RISK, QUALITY AND EXPERIENCE™

• CIVIL ENGINEERING
 • SURVEYING & MAPPING
 • CONSTRUCTION SERVICES
 • WATER RESOURCES
 • PLANNING & DEVELOPMENT
 • STRUCTURAL ENGINEERING
 • LANDSCAPE ARCHITECTURE

MADISON REGIONAL OFFICE
 161 HORCOCK DRIVE, SUITE 101
 MADISON, WI 53704
 608.546.5000 PHONE 608.546.2255 FAX
 MADISON | APPLETON
 www.jsdinc.com

EXISTING CONDITIONS MAP

LOTS 1, 2 AND 3 OF CERTIFIED SURVEY MAP No. 12648, AS RECORDED IN VOLUME 79, ON PAGES 284-286, AS DOCUMENT NO. 4512376, BEING A PART OF THE WEST 1/2 OF THE SOUTHWEST QUARTER OF SECTION 28 AND PART OF THE SOUTHEAST QUARTER OF THE SOUTHWEST QUARTER AND THE NORTHEAST QUARTER OF THE SOUTHWEST QUARTER OF SECTION 29, TOWNSHIP 8 NORTH, RANGE 10 EAST, CITY OF MADISON, DANE COUNTY, WISCONSIN

SERVICES PROVIDED TO:
MADISON COLLEGE
3550 ANDERSON ST.
MADISON, WI 53704

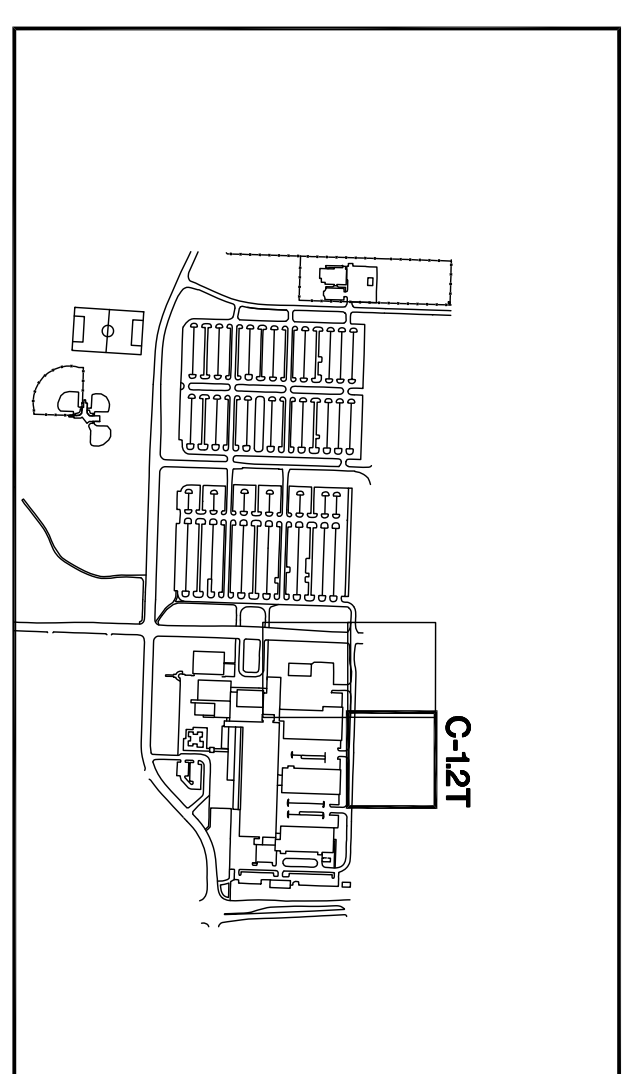
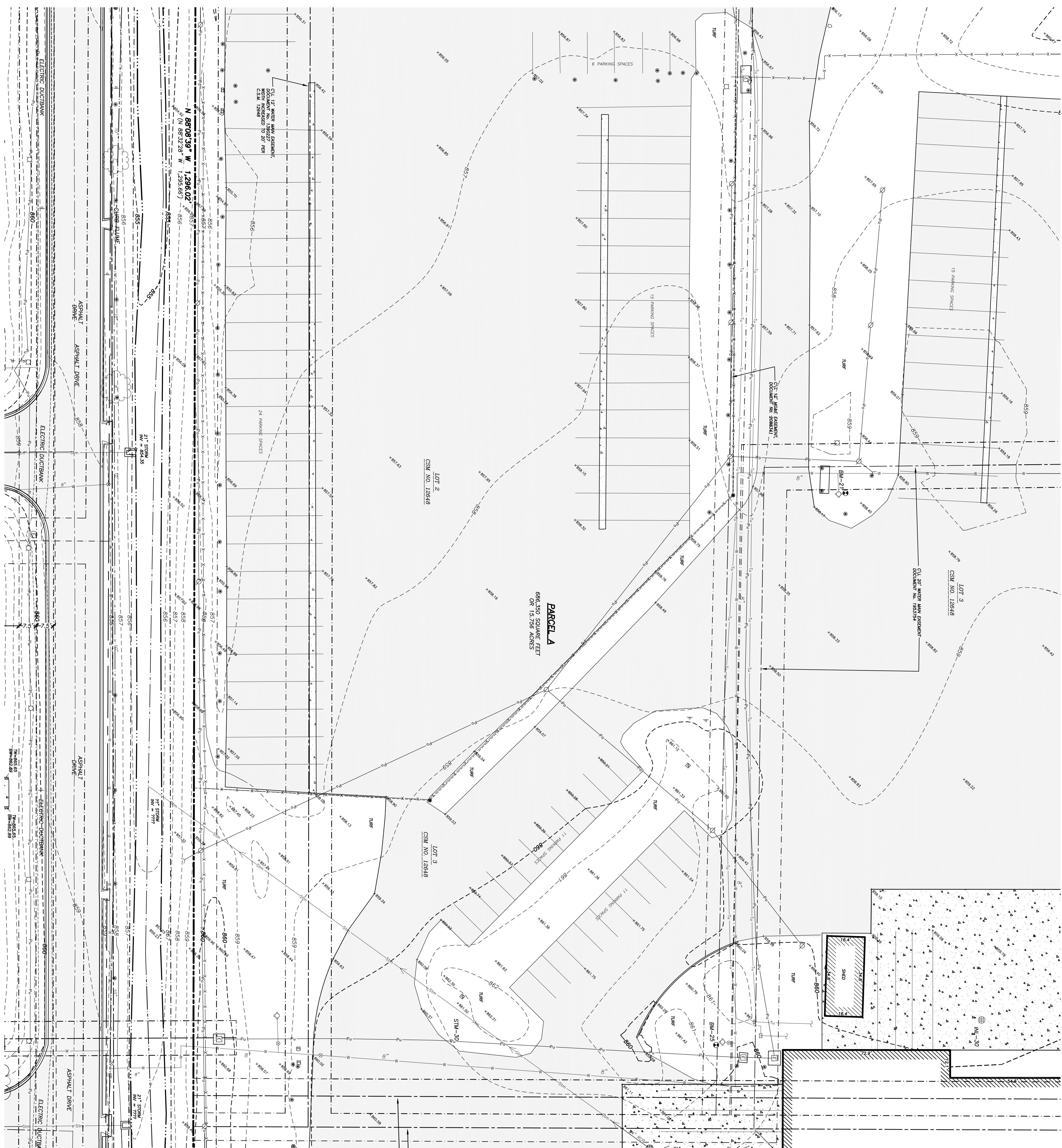
JSD PROJECT NO.: _____
 DESIGN: _____
 DRAWN: _____
 APPROVED: _____
 PLAN MODIFICATIONS: _____

DIGESTERS HOTLINE
 Toll Free (800) 242-8511
 Wisconsin Road 141 256-1151
 Hearing Impaired TDD (800) 542-2888
 www.DigestorHotline.com

SHEET TITLE:
EXISTING CONDITIONS MAP

SHEET NUMBER:
C-1.1T

THESE PLANS AND DESIGNS ARE COPYRIGHT PROTECTED AND MAY NOT BE USED IN WHOLE OR IN PART WITHOUT THE WRITTEN CONSENT OF JSD PROFESSIONAL SERVICES, INC.



LEGEND

- ✱ REBAR FOUND
- REBAR FOUND
- HORIZONTAL SPIKE FOUND
- HORIZONTAL WELL
- BOLLARD
- FLAG POLE
- MAIL BOX
- SIGN
- ROCK
- SANITARY MANHOLE
- MANHOLE
- WATER OR GAS VALVE
- STORM MANHOLE
- ROUND CASTED INLET
- SQUARE CASTED INLET
- CURB INLET
- GAS REGULATOR/METER
- ELECTRIC MANHOLE
- ELECTRIC TRANSFORMER
- POWER POLE W/OUT
- LIGHT POLE
- TELEPHONE PESTIVAL
- DECIDUOUS TREE
- HANDICAP PARKING

- PARCEL BOUNDARY
- RIGHT-OF-WAY LINE
- PLATTED LOT LINE
- EASEMENT LINE
- FENCE LINE
- STONE WALL
- EDGE OF WATER
- DELIMITED WETLANDS
- CONCRETE CURB & GUTTER
- EDGE OF PAVEMENT
- ASPHALT DRIVE
- WATER LINE
- STORM SEWER
- MANUAL GAS
- OVERHEAD ELECTRIC
- UNDERGROUND ELECTRIC
- UNDERGROUND TELEPHONE
- FIBER OPTIC
- INTERGRADE CONTROL
- SPOT ELEVATION
- BUILDING
- CONCRETE PAVEMENT
- TOP OF WALL
- BOTTOM OF WALL
- BW

NOTES

- THE HORIZONTAL DATUM FOR THIS MAP IS THE WISCONSIN COUNTY COORDINATE SYSTEM (WCCS)-DANE ZONE.
- THE VERTICAL DATUM FOR THESE ELEVATIONS IS THE NORTH AMERICAN VERTICAL DATUM OF 1988. (NAD 83). THE REFERENCE BENCHMARK FOR THIS SURVEY IS THE ELEVATION FOR STATION 100+0.00 IN SECTION 28, TOWN 8 NORTH, RANGE 10 EAST.
- CONTROL INTERVAL IS ONE FOOT.
- FIELD WORK PERFORMED BY JSD PROFESSIONAL SERVICES, INC. IN NOVEMBER 2010.
- SURVEYING UTILITIES AND FEATURES SHOWN ON THIS MAP HAVE BEEN LOCATED BY USING SURVEILLANCE FEATURES AND APPROPRIATE LOCATING DEVICES. HOTLINE FIELD MARKINGS AND BY REFERENCE TO UTILITY DOCUMENTS. DO NOT RELY ON THESE DATA FOR CONSTRUCTION OF UTILITIES.
- BEFORE EXCAVATION, APPROPRIATE UTILITY COMPANIES SHOULD BE CONTACTED AT 1.800.424.8311.
- THE ACCURACY OF THE BENCHMARKS SHOWN ON THIS MAP SHALL BE VERIFIED WITHOUT THE ACCURACY OF THESE BENCHMARKS. THIS DOES NOT IMPAIR THE ACCURACY OF THESE BENCHMARKS. THIS DOES NOT IMPAIR THE ACCURACY OF THESE BENCHMARKS. THIS DOES NOT IMPAIR THE ACCURACY OF THESE BENCHMARKS.
- SPOT ELEVATIONS SHOWN REFERENCE THE TOP BACK OF CURB, WHERE PRESENT.
- THIS PARCEL IS SUBJECT TO ALL EASEMENTS AND AGREEMENTS, BOTH RECORDED AND UNRECORDED.
- PRELIMINARY UTILITIES NOT MARKED IN THE FIELD OR PROVIDED IN RECORD DOCUMENTS, MAY NOT BE DEPICTED ON THIS SHEET.

BENCHMARKS			
BENCH MARK	ELEVATION	DESCRIPTION	REMARKS
BM-21	881.47	TOP NUT ON PROBABLY	
BM-23	882.83	TOP NUT ON PROBABLY	

STORM SEWER INLETS			
INLET ID	RIM ELEVATION	INVERT ELEVATION	PIPE SIZE PIPE TYPE
STM-29	859.68	855.11	3" PVC
STM-30	859.68	855.11	3" PVC

STORM SEWER MANHOLES			
STRUCT ID	RIM ELEVATION	INVERT ELEVATION	PIPE SIZE PIPE TYPE
STM-29	859.68	855.11	3" PVC
STM-30	859.68	855.11	3" PVC

EXISTING CONDITIONS MAP

LOTS 1, 2 AND 3 OF CERTIFIED SURVEY MAP No. 12648, AS RECORDED IN VOLUME 79, ON PAGES 284-286, AS DOCUMENT No. 4512376, BEING A PART OF THE WEST 1/2 OF THE SOUTHWEST QUARTER OF SECTION 28 AND PART OF THE SOUTHEAST QUARTER OF THE SOUTHWEST QUARTER AND THE NORTHEAST QUARTER OF THE SOUTHWEST QUARTER OF SECTION 29, TOWNSHIP 8 NORTH, RANGE 10 EAST, CITY OF MADISON, DANE COUNTY, WISCONSIN

JSD Professional Services, Inc.
 Planners • Surveyors • Engineers
 1611 HORIZON DRIVE, SUITE 101
 MADISON REGIONAL OFFICE
 MADISON, WI 53704
 608.548.5001 PHONE 608.548.2355 FAX
 KENOSHA | APPLETON
 www.jsdinc.com

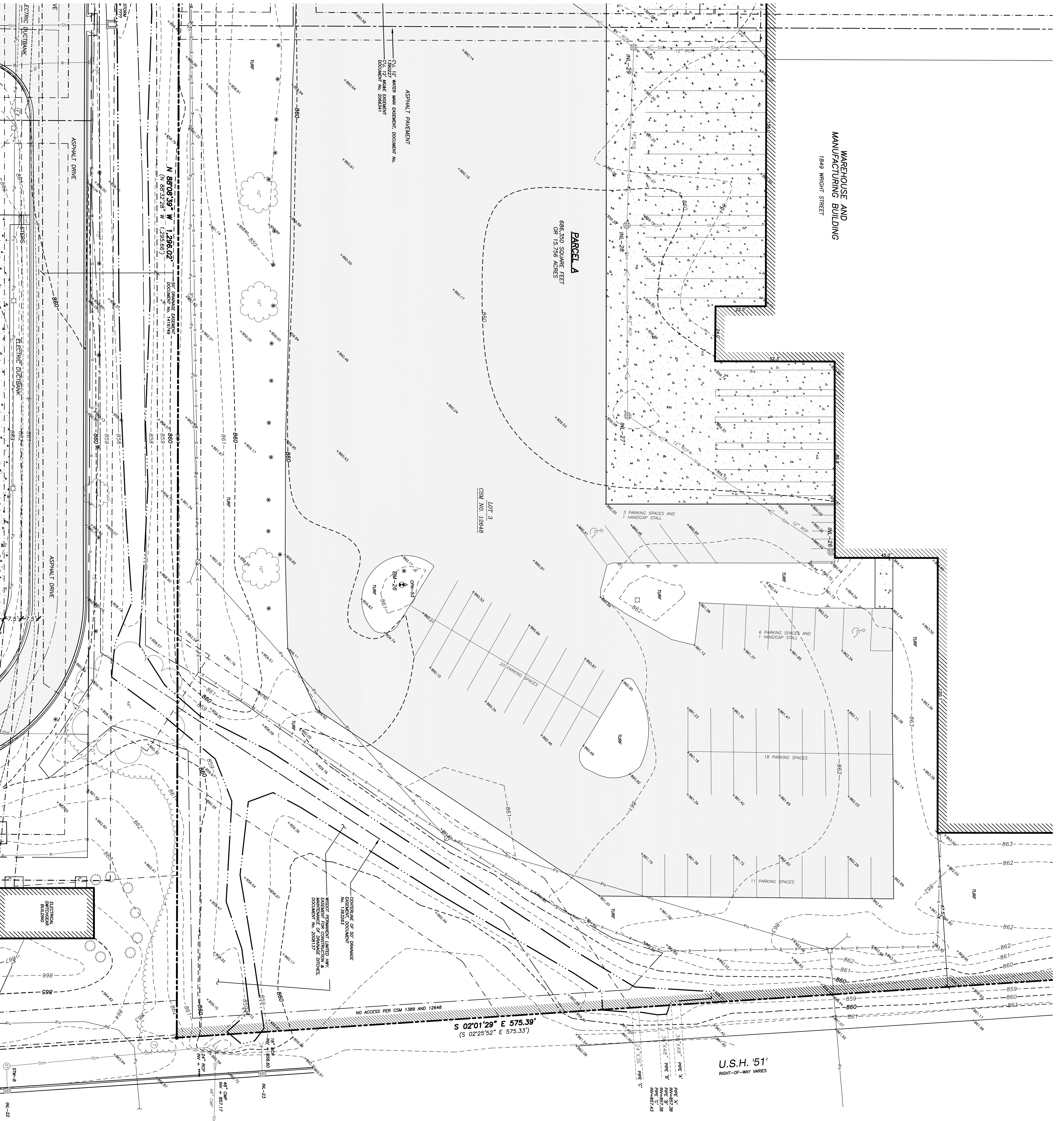
MADISON COLLEGE
3550 ANDERSON ST.
MADISON, WI 53704

DIGESTERS HOTLINE
 Toll Free (800) 242-8511
 Milwaukee Area (414) 254-1181
 Hearing Impaired TDD (608) 542-2389
 www.DigestorHotlines.com

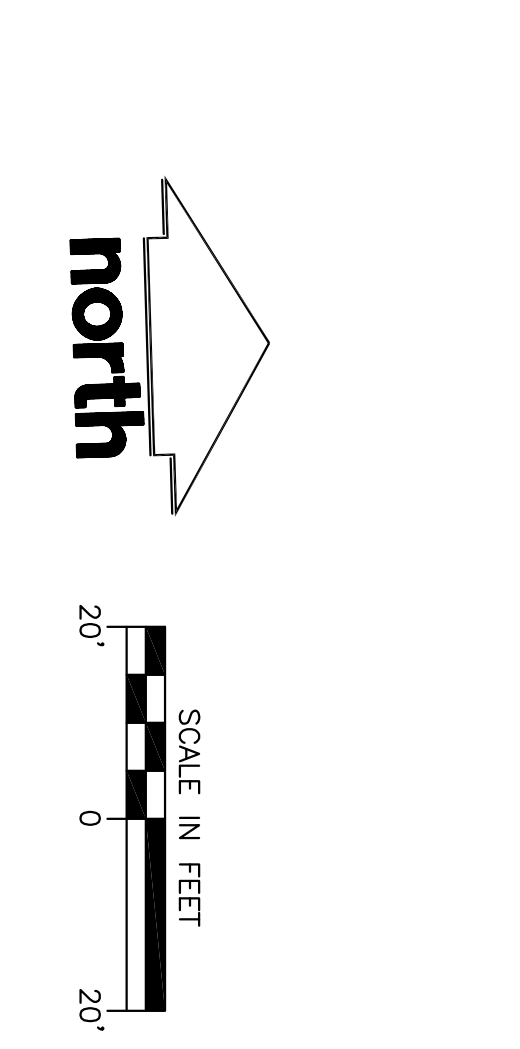
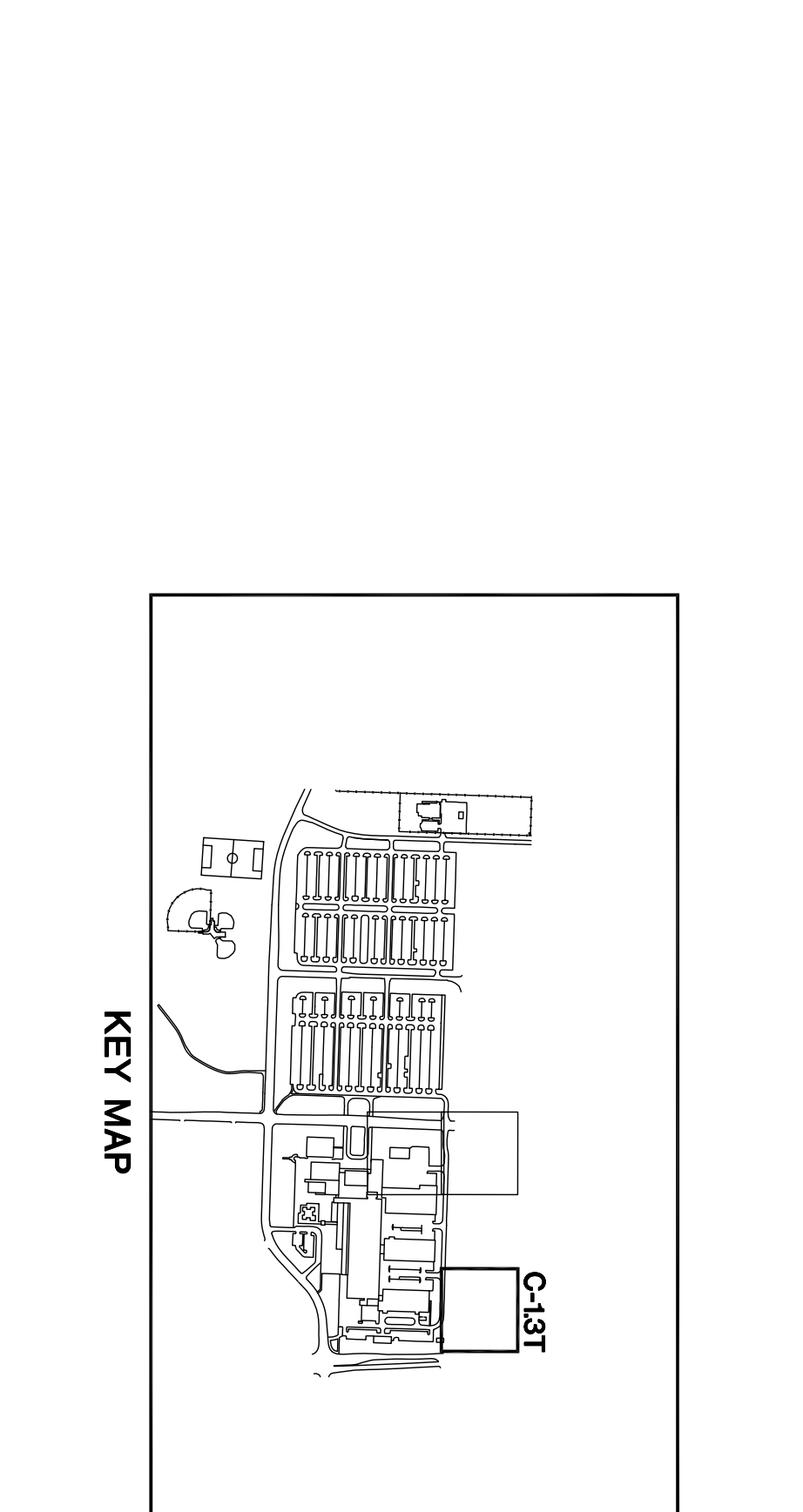
JSD PROJECT NO.:
 DESIGN: 01-12-2011
 DRAWN: JSD
 APPROVED: JSD
 PLAN MODIFICATIONS: 04-12-2011

SHEET NUMBER:
C-1.2T

EXISTING CONDITIONS MAP



DRAFT



LEGEND

- * REBAR FOUND
- RAILROAD SPOKE FOUND
- HOISTING WELL
- PLATED LOT LINE
- EXISTING LOT LINE
- FENCE LINE
- MAIL POLE
- ROCK
- STAIRWAY MANHOLE
- SEWER MANHOLE
- WATER OR GAS VALVE
- STORM MANHOLE
- ROUND CASTED INLET
- SQUARE CASTED INLET
- CURB INLET
- GAS REGULATOR/METER
- ELECTRIC MANHOLE
- ELECTRIC TRANSFORMER
- POWER POLE W/UTILITY
- LIGHT POLE
- TELEPHONE FESTIVAL
- DECIDUOUS TREE
- HANDICAP PARKING

- PARCEL BOUNDARY
- RIGHT-OF-WAY LINE
- PLATED LOT LINE
- EXISTING LOT LINE
- FENCE LINE
- EDGE OF WATER
- DELIMITED WETLANDS
- EDGE OF PAVEMENT
- CONCRETE CURB & GUTTER
- CONCRETE PAVEMENT
- ASPHALT PAVEMENT
- SPOT ELEVATION
- INTERIOR CONTROL
- BUILDING
- CONCRETE PAVEMENT
- TOP OF WALL
- BOTTOM OF WALL

- NOTES**
1. THE HORIZONTAL DATUM FOR THIS MAP IS THE WISCONSIN COUNTY COORDINATE SYSTEM (WCCS)-DANE ZONE.
 2. THE VERTICAL DATUM FOR THESE ELEVATIONS IS THE NORTH AMERICAN VERTICAL DATUM OF 1988. (NAD 83). THE REFERENCE BENCHMARK FOR THIS SURVEY IS THE STATION MARKED BY STATION NUMBER 53.
 3. CONTOUR INTERVAL IS ONE FOOT.
 4. FIELD WORK PERFORMED BY JSD PROFESSIONAL SERVICES, INC. IN NOVEMBER 2010.
 5. SURVEYING UTILITIES AND FEATURES SHOWN ON THIS MAP HAVE BEEN APPROVED BY LOCATING SURVEIL FEATURES AND APPURTENANCES. LOCATING ORDERS HOTLINE FIELD WARNINGS AND BY REFERENCE TO UTILITY 2010(040482) MAPS. DODGE'S HOTLINE TICKET NO. 2010(040304) & 2010(040482).
 6. BEFORE EXCAVATION, APPROPRIATE UTILITY COMPANIES SHOULD BE CONTACTED FOR EXACT LOCATION OF UNDERGROUND UTILITIES. CONTACTS LISTED AT 1.800.242.8311.
 7. THE ACCURACY OF THE BENCHMARKS SHOWN ON THIS MAP SHALL BE VERIFIED BY THE SURVEYOR. THE ACCURACY OF THESE BENCHMARKS WILL BE DEPENDENT UPON THE ACCURACY OF THESE BENCHMARKS. VISUAL CHECK ONLY.
 8. SPOT ELEVATIONS SHOWN REFERENCE THE TOP BACK OF CURB, WHERE PRESENT.
 9. THIS PARCEL IS SUBJECT TO ALL EASEMENTS AND AGREEMENTS, BOTH RECORDED AND UNRECORDED.
 10. PREVIOUS UTILITIES NOT MARKED IN THE FIELD OR PROVIDED IN RECORD DOCUMENTS, MAY NOT BE DEPICTED ON THIS SHEET.

BENCH MARK	ELEVATION	DESCRIPTION
BM-53	881.80	ISI CONTROL POINT NUMBER 53

STORM SEWER MANHOLES		
MANHOLE ID	RAW ELEVATION	INVERT ELEVATION/PIPE SIZE/PIPE TYPE
NL-22	862.50	W 858.58 18" 602
NL-23	862.30	SW 857.26 12" 602
NL-24	858.79	W 856.04 12" 602
NL-27	858.95	NE 858.94 12" 602
NL-28	858.95	E 855.20 12" 602
NL-29	860.71	N 855.20 NOT VISIBLE
		E 856.96 18" 602
		N 857.01 12" 602

EXISTING CONDITIONS MAP

LOTS 1, 2 AND 3 OF CERTIFIED SURVEY MAP No. 12648, AS RECORDED IN VOLUME 79, ON PAGES 284-286, AS DOCUMENT No. 4512376, BEING A PART OF THE WEST 1/2 OF THE SOUTHWEST QUARTER OF SECTION 28 AND PART OF THE SOUTHEAST QUARTER OF THE SOUTHWEST QUARTER AND THE NORTHEAST QUARTER OF THE SOUTHWEST QUARTER OF SECTION 29, TOWNSHIP 8 NORTH, RANGE 10 EAST, CITY OF MADISON, DANE COUNTY, WISCONSIN

JSD PROJECT NO.: _____

DESIGN: _____

DRAWN: _____

APPROVED: _____

PLAN MODIFICATIONS: _____

DIGIFRS HOTLINE

Toll Free (800) 242-8511

Madison Area (608) 542-2888

www.DigifrsHotline.com

SHEET NUMBER: _____

C-1.3T

EXISTING CONDITIONS MAP

MAISON COLLEGE
3550 ANDERSON ST.
MADISON, WI 53704

www.jsdinc.com

MAISON I APPLETON

MAISON J MILWAUKEE

MAISON K WISCONSIN

MAISON L MADISON

MAISON M MILWAUKEE

MAISON N MADISON

MAISON O MILWAUKEE

MAISON P MADISON

MAISON Q MILWAUKEE

MAISON R MADISON

MAISON S MILWAUKEE

MAISON T MADISON

MAISON U MILWAUKEE

MAISON V MADISON

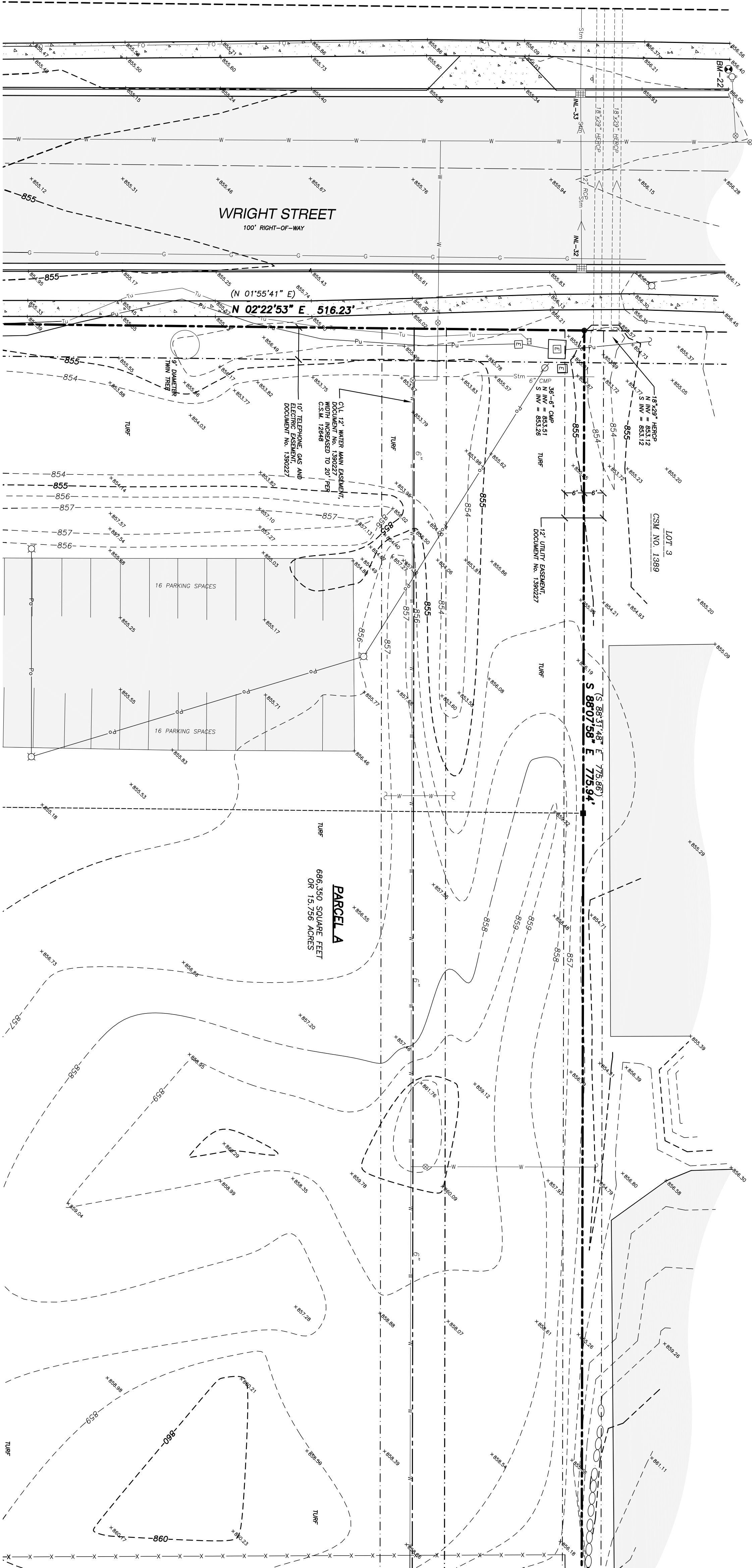
MAISON W MILWAUKEE

MAISON X MADISON

MAISON Y MILWAUKEE

MAISON Z MADISON

THESE PLANS AND DESIGNS ARE COPYRIGHT PROTECTED AND MAY NOT BE USED IN WHOLE OR IN PART WITHOUT THE WRITTEN CONSENT OF JSD PROFESSIONAL SERVICES, INC.



DRAFT

LEGEND

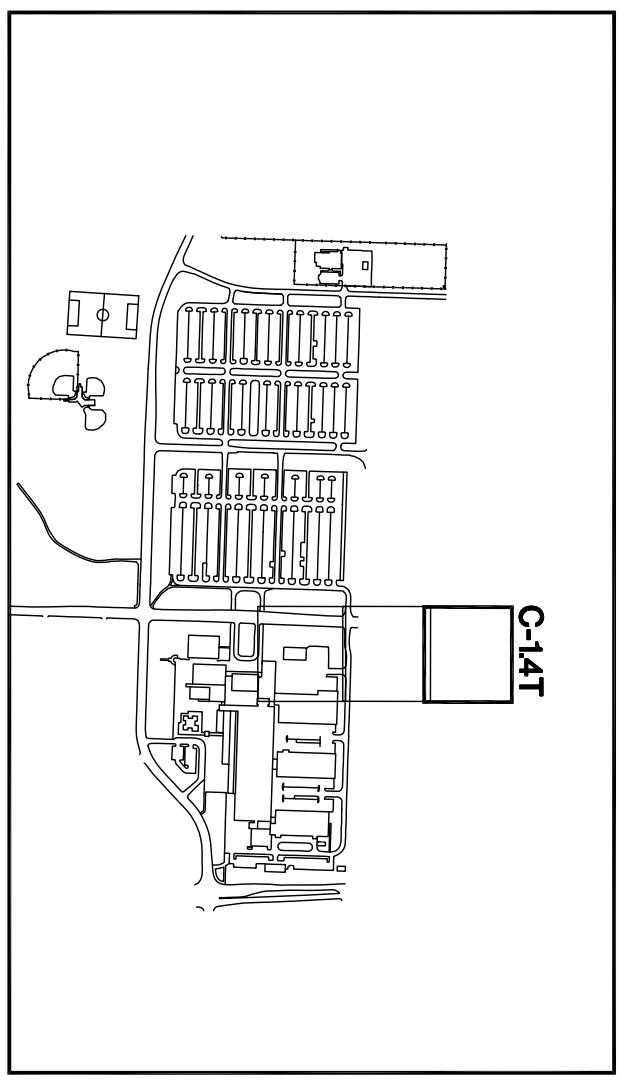
- ✱ REBAR FOUND
- RAILROAD STAKE FOUND
- HORIZONTAL WELLS
- ROLLING WELLS
- BOLLARD
- FLAG POLE
- MAIL BOX
- SIGN
- ROCK
- SANDPAPER MANHOLE
- CONCRETE CUBES
- WIRE OR GAS VALVE
- STORM MANHOLE
- ROUND CASTED INLET
- SQUARE CASTED INLET
- CURB INLET
- GAS REGULATOR/METER
- ELECTRIC MANHOLE
- ELECTRIC TRANSFORMER
- POWER POLE W/OUT
- LIGHT POLE
- TELEPHONE PESTIVAL
- MANHOLE
- DECIDUOUS TREE
- HANDICAP PARKING

NOTES

1. THE HORIZONTAL DATUM FOR THIS MAP IS THE WISCONSIN COUNTY COORDINATE SYSTEM (WCCS)-DANE ZONE.
2. THE VERTICAL DATUM FOR THESE ELEVATIONS IS THE NORTH AMERICAN DATUM OF 1988. (NAD 88). THE REFERENCE BENCHMARK FOR THIS SURVEY IS THE ADJUTANT GENERAL'S BENCHMARK (ADM BENCH) LOCATED AT SECTION 28, TOWN 8 NORTH, RANGE 10 EAST, CITY OF MADISON, DANE COUNTY, WISCONSIN.
3. CONTOUR INTERVAL IS ONE FOOT.
4. FIELD WORK PERFORMED BY JSD PROFESSIONAL SERVICES, INC. IN NOVEMBER 2010.
5. SURVEYING UTILITIES AND FEATURES SHOWN ON THIS MAP HAVE BEEN APPROXIMATED BY LOCATING SURVEYAL FEATURES AND APPROPRIATE LOCATION ORDERS HOTLINE FIELD MARKS AND BY REFERENCE TO UTILITY LOCATION ORDERS HOTLINE MAPS. DODGE'S HOTLINE TICKET NO. 2010030284 & 2010040821.
6. BEFORE EXCAVATION, APPROPRIATE UTILITY COMPANIES SHOULD BE CONTACTED FOR EXACT LOCATION OF UNDERGROUND UTILITIES CONTACT DODGE'S HOTLINE AT 1.800.424.8311.
7. THE ACCURACY OF THE BENCHMARKS SHOWN ON THIS MAP SHALL BE DETERMINED BY THE USER. THE ACCURACY OF THESE BENCHMARKS Varies AND DOES NOT WARRANT THE ACCURACY OF THESE BENCHMARKS.
8. SPOT ELEVATIONS SHOWN REFERENCE THE TOP BACK OF CURB, WHERE PRESENT.
9. THIS PARCEL IS SUBJECT TO ALL EASEMENTS AND AGREEMENTS, BOTH RECORDED AND UNRECORDED.
10. PRIVATE UTILITIES NOT MARKED IN THE FIELD OR PROVIDED IN RECORD DOCUMENTS, MAY NOT BE DEPICTED ON THIS SURVEY.

BENCH	ELEVATION	DESCRIPTION
BM-22	558.17	TOP NUT ON HYDRAUNT

ALLET ID	RAW ELEVATION	INVERT	ELEVATION	PIPE SIZE	PIPE TYPE
M1-25	555.72	W	552.22	12"	RP2
M1-26	555.72	W	552.22	12"	RP2
M1-27	555.15	E	552.30	12"	RP2



EXISTING CONDITIONS MAP

LOTS 1, 2 AND 3 OF CERTIFIED SURVEY MAP No. 12648, AS RECORDED IN VOLUME 79, ON PAGES 284-286, AS DOCUMENT No. 4512376, BEING A PART OF THE WEST 1/2 OF THE SOUTHWEST QUARTER OF SECTION 28 AND PART OF THE SOUTHEAST QUARTER OF THE SOUTHWEST QUARTER AND THE NORTHEAST QUARTER OF THE SOUTHWEST QUARTER OF SECTION 29, TOWNSHIP 8 NORTH, RANGE 10 EAST, CITY OF MADISON, DANE COUNTY, WISCONSIN

JSD PROJECT NO.:

DESIGN:	JK	DATE:	01-12-2011
DRAWN:	JK	DATE:	01-12-2011
APPROVED:	JK	DATE:	01-12-2011
PLAN MODIFICATIONS:			

JSD Professional Services, Inc.
 Planners • Surveyors • Engineers

BRIDGING THE DIVIDE WITH A COMMITMENT TO EXCELLENCE THROUGH THE BEST QUALITY AND EXPERIENCE™

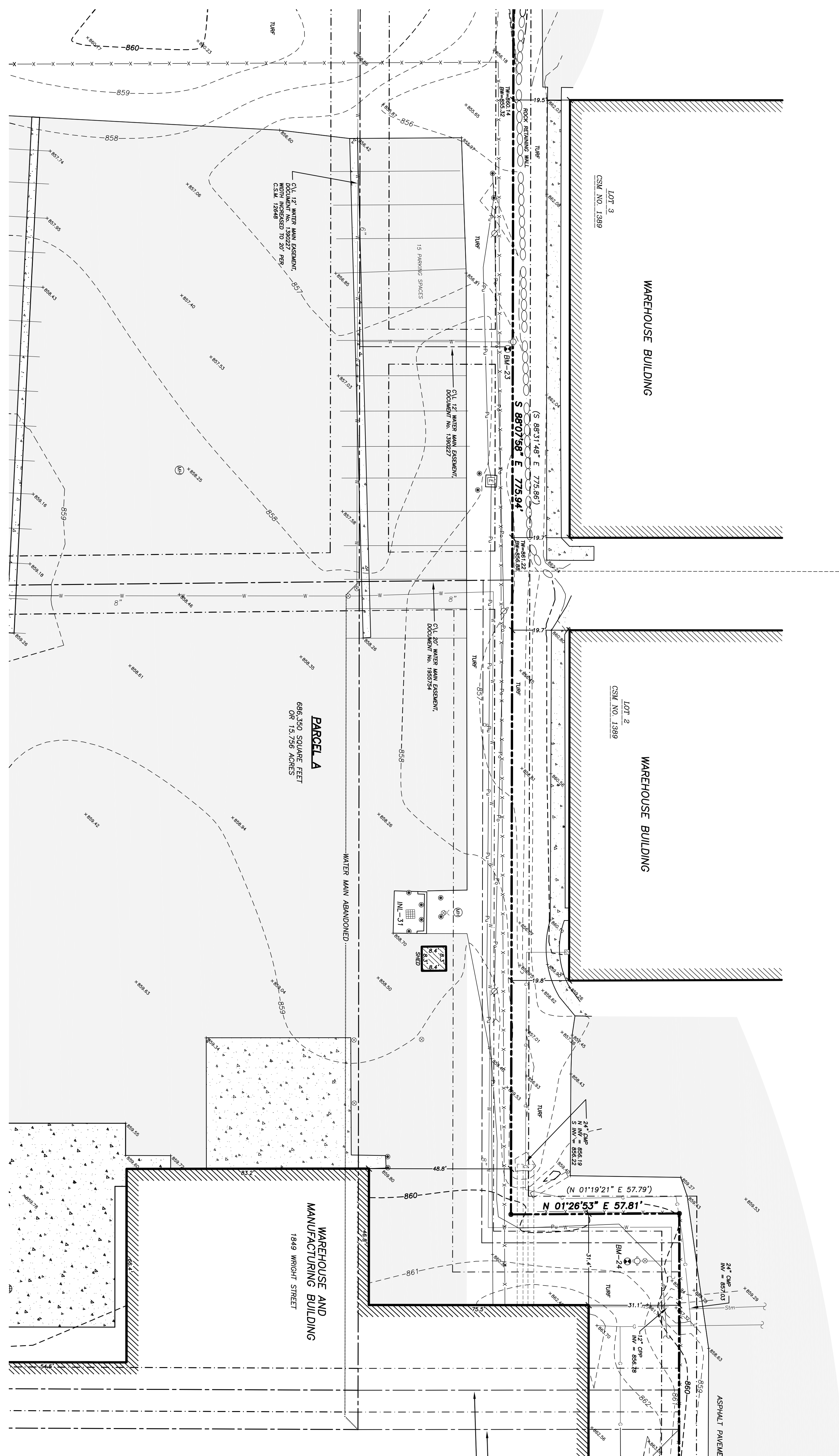
- CIVIL ENGINEERING
- SURVEYING & MAPPING
- CONSTRUCTION SERVICES
- WATER RESOURCES
- PLANNING & DEVELOPMENT
- STRUCTURAL ENGINEERING
- LANDSCAPE ARCHITECTURE

MADISON REGIONAL OFFICE
 161 HORIZON DRIVE, SUITE 101
 MADISON, WISCONSIN 53704
 608.548.5000 PHONE 608.548.2255 FAX
 MADISON | APPLETON
 www.jsdinc.com

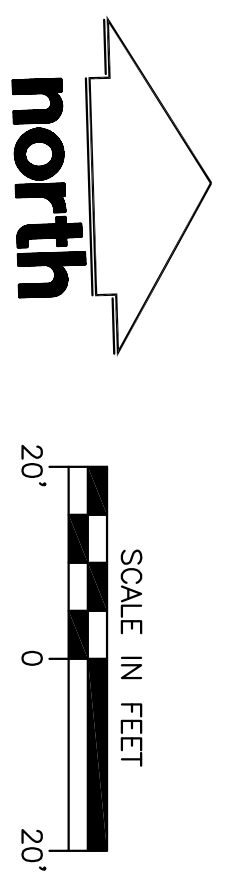
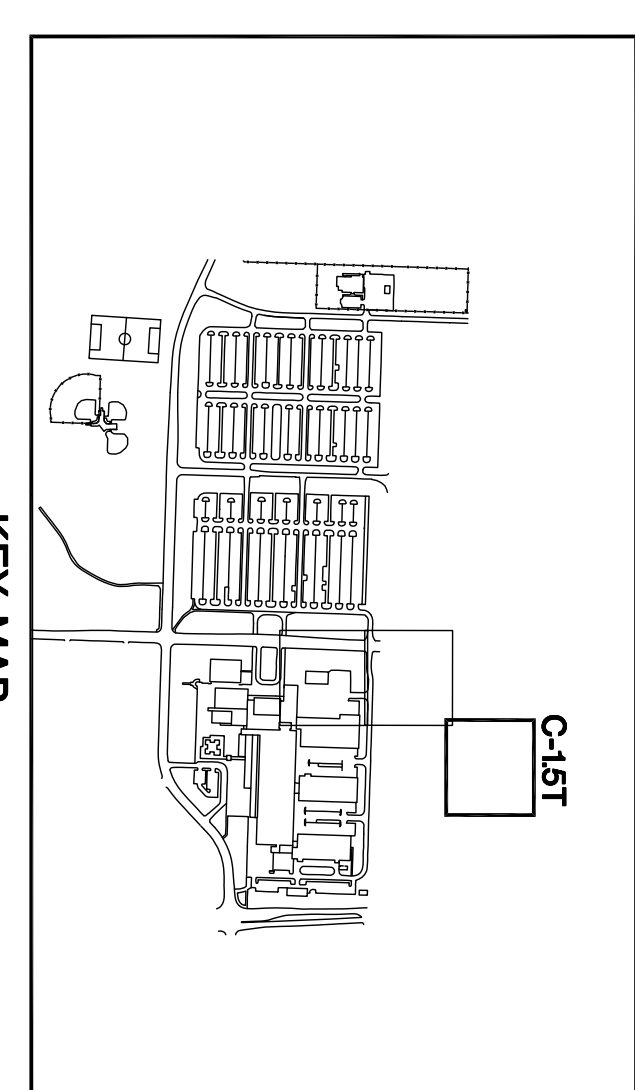
SHEET NUMBER: **C-1.4T**

EXISTING CONDITIONS MAP

DIGESTERS HOTLINE
 Toll Free (800) 242-8511
 Wisconsin Area (414) 256-1151
 Hearing Impaired TDD (608) 542-2389
 www.DigestersHotline.com



DRAFT



- LEGEND**
- ✱ REBAR FOUND
 - RAILROAD SPIKE FOUND
 - HORIZONTAL WELL
 - BOLLARD
 - FLAG POLE
 - MAIL BOX
 - SIGN
 - ROCK
 - SANDPIT MANHOLE
 - CONCRETE CURE & BUTTER
 - WATER OR GAS VALVE
 - STORM MANHOLE
 - ROUND CASTED INLET
 - SQUARE CASTED INLET
 - CURB INLET
 - GAS REGULATOR/METER
 - ELECTRIC MANHOLE
 - ELECTRIC TRANSFORMER
 - POWER POLE W/OUT
 - LIGHT POLE
 - TELEPHONE PESTICIDE
 - DECIDUOUS TREE
 - HANDICAP PARKING
- PARCEL BOUNDARY
 - RIGHT-OF-WAY LINE
 - PLATTED LOT LINE
 - EASEMENT LINE
 - FENCE LINE
 - STONE WALL
 - EDGE OF WATER
 - DELIMITED WETLANDS
 - CONCRETE CURB & GUTTER
 - EDGE OF PAVEMENT
 - SANDPIT
 - WATER OR GAS VALVE
 - STORM MANHOLE
 - MANUAL GAS
 - OVERHEAD ELECTRIC
 - UNDERGROUND TELEPHONE
 - REBAR SPIKE
 - RAILROAD SPIKE
 - SPOT ELEVATION
 - INTERIOR CONTOUR
 - BUILDING
 - BRICK/MOSAIC PAVEMENT
 - CONCRETE PAVEMENT
 - TOP OF WALL
 - BOTTOM OF WALL
- NOTES**
- THE HORIZONTAL DATUM FOR THIS MAP IS THE WISCONSIN COUNTY COORDINATE SYSTEM (WCCS)-DANE ZONE.
 - THE VERTICAL DATUM FOR THESE ELEVATIONS IS THE NORTH AMERICAN VERTICAL DATUM OF 1988. (NAD 83). THE REFERENCE BENCHMARK FOR THIS SURVEY IS THE STATIONARY BENCHMARK (SBM-23) LOCATED AT SECTION 28, TOWN 8 NORTH, RANGE 10 EAST, MADISON, WISCONSIN.
 - CONTOUR INTERVAL IS ONE FOOT.
 - FIELD WORK PERFORMED BY JSD PROFESSIONAL SERVICES, INC. IN NOVEMBER 2010.
 - SURVEYING UTILITIES AND FEATURES SHOWN ON THIS MAP HAVE BEEN APPROXIMATED BY LOCATING SURVEYAL FEATURES AND APPROPRIATELY LOCATING DIGESTERS HOTLINE FIELD MARKERS AND BY REFERENCE TO UTILITY LOCATION MAPS. DIGESTERS HOTLINE TICKET NO. 2010400204 & 20104004821.
 - BEFORE EXCAVATION, APPROPRIATE UTILITY COMPANIES SHOULD BE CONTACTED FOR EXACT LOCATION OF UNDERGROUND UTILITIES. CONTACT DIGESTERS HOTLINE AT 1.800.424.8111.
 - THE ACCURACY OF THE BENCHMARKS SHOWN ON THIS MAP SHALL BE VERIFIED BY THE SURVEYOR AT THE TIME OF THE SURVEY. THE ACCURACY OF THESE BENCHMARKS WITHOUT THE ACCURACY OF THESE BENCHMARKS, WILL NOT BE DEPICTED ON THIS SURVEY.
 - SPOT ELEVATIONS SHOWN REFERENCE THE TOP BACK OF CURB, WHERE PRESENT.
 - THIS PARCEL IS SUBJECT TO ALL EASEMENTS AND AGREEMENTS, BOTH RECORDED AND UNRECORDED.
 - PRELIMINARY UTILITIES NOT MARKED IN THE FIELD OR PROVIDED IN RECORD DOCUMENTS, MAY NOT BE DEPICTED ON THIS SURVEY.

BENCHMARKS			
BENCH	ELEVATION	DESCRIPTION	REMARKS
BM-23	653.24	TOP NUT ON THROGANT	
BM-24	652.50	TOP NUT ON THROGANT	

STORM SEWER INLETS			
INLET ID	RAW ELEVATION	INVERT	ELEVATION/PIPE SIZE PIPE TYPE
INL-31	658.58	454.23	3" PVC

* PIPE DOWNS DOWN FROM CENTER OF THE MANHOLE

EXISTING CONDITIONS MAP

LOTS 1, 2 AND 3 OF CERTIFIED SURVEY MAP No. 12648, AS RECORDED IN VOLUME 79, ON PAGES 284-286, AS DOCUMENT No. 4512376, BEING A PART OF THE WEST 1/2 OF THE SOUTHWEST QUARTER OF SECTION 28 AND PART OF THE SOUTHEAST QUARTER OF THE SOUTHWEST QUARTER AND THE NORTHEAST QUARTER OF THE SOUTHWEST QUARTER OF SECTION 29, TOWNSHIP 8 NORTH, RANGE 10 EAST, CITY OF MADISON, DANE COUNTY, WISCONSIN

JSD Professional Services, Inc.
Engineers • Surveyors • Planners

BRITISH HILL TOWNSHIP WITH A COMMITMENT TO EXCELLENCE THROUGH EXCELLENCE IN QUALITY AND ENVIRONMENT

- CIVIL ENGINEERING
- SURVEYING & MAPPING
- CONSTRUCTION SERVICES
- WATER RESOURCES
- PLANNING & DEVELOPMENT
- STRUCTURAL ENGINEERING
- LANDSCAPE ARCHITECTURE

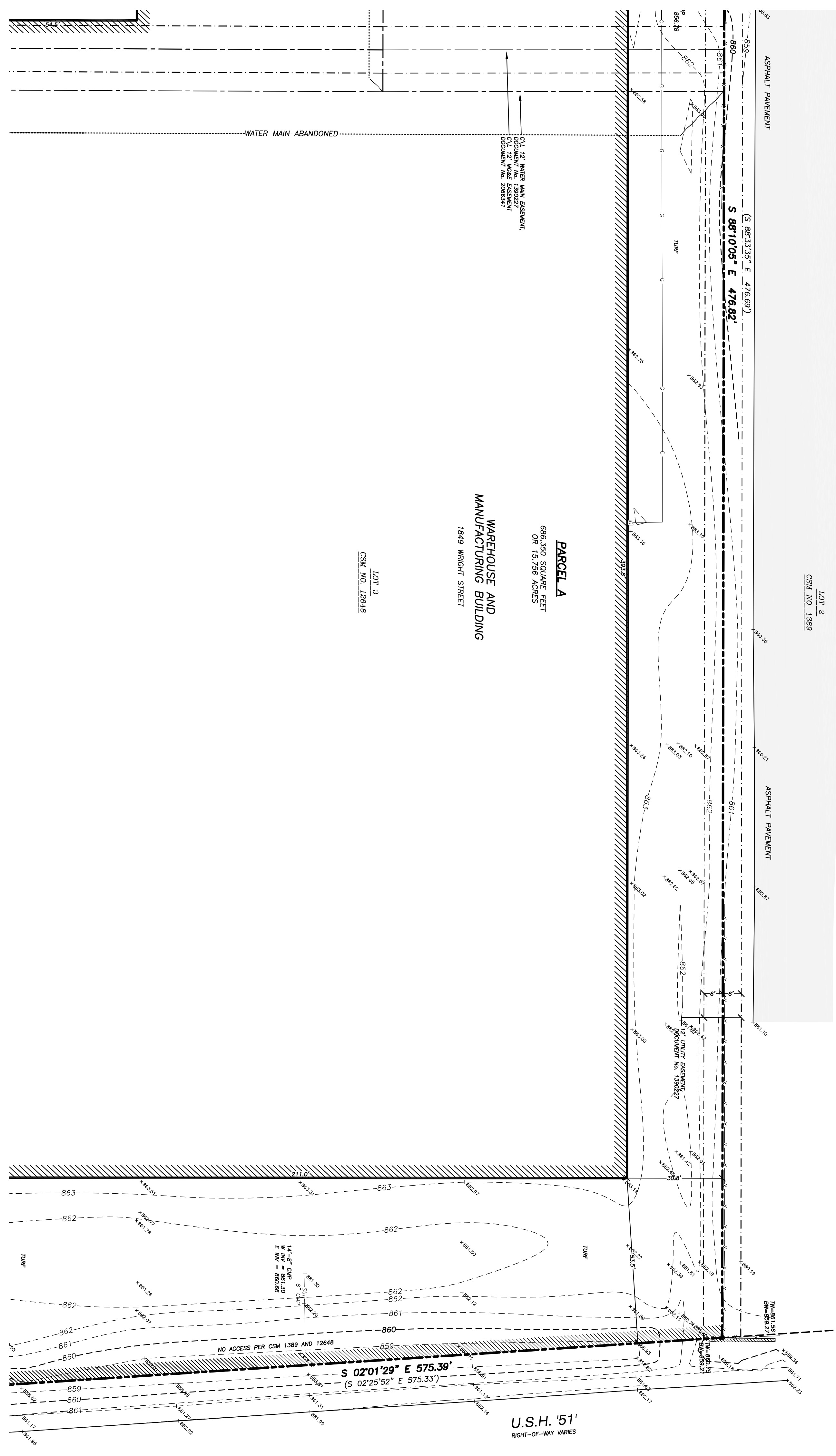
MADISON REGIONAL OFFICE
 161 HORIZON DRIVE, SUITE 101
 MADISON, WISCONSIN 53704
 608.548.5000 PHONE 608.548.2255 FAX
 MADISON | APPLETON
 www.jsdinc.com

SERVICES PROVIDED TO:
MADISON COLLEGE
3550 ANDERSON ST.
MADISON, WI 53704

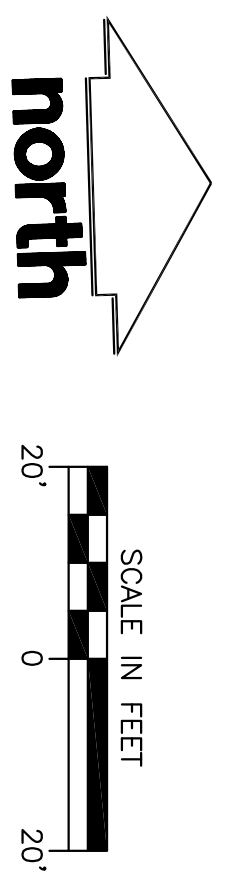
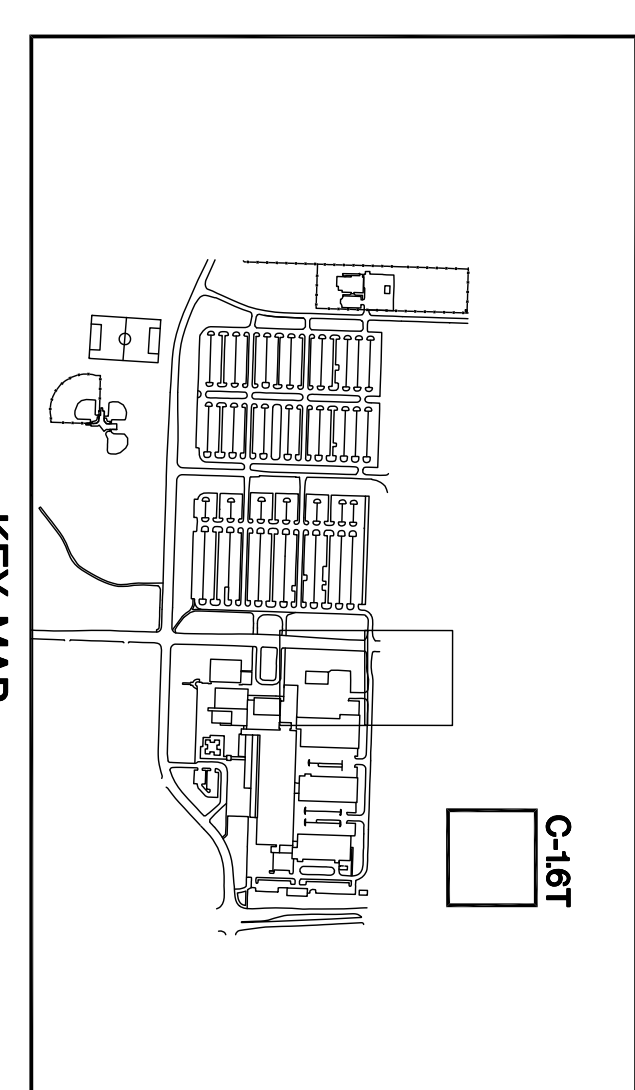
JSD PROJECT NO.:
 DESIGN: _____
 DRAWN: _____
 APPROVED: _____
 PLAN MODIFICATIONS:

DIGESTERS HOTLINE
 Toll Free (800) 242-8511
 Milwaukee Area (414) 256-1151
 Hearing Impaired TDD (608) 542-2389
 www.DigestersHotline.com

SHEET NUMBER:
C-1.5T



DRAFT



- LEGEND**
- ✱ REBAR FOUND
 - RADIUS STAKE FOUND
 - HORIZONTAL WELL
 - BOLLARD
 - FLAG POLE
 - MAIL BOX
 - SIGN
 - ROCK
 - SANDPAPER MANHOLE
 - CONCRETE CURE & BUTTER
 - CONCRETE CURB
 - WATER OR GAS VALVE
 - STORM MANHOLE
 - ROUND CASTED INLET
 - SQUARE CASTED INLET
 - CURB INLET
 - GAS REGULATOR/METER
 - ELECTRIC MANHOLE
 - ELECTRIC TRANSFORMER
 - POWER POLE W/OUT
 - LIGHT POLE
 - TELEPHONE FESTIVAL MANHOLE
 - DECIDUOUS TREE
 - HANDICAP PARKING
-
- PARCEL BOUNDARY
 - RIGHT-OF-WAY LINE
 - PLATTED LOT LINE
 - EASEMENT LINE
 - FENCE LINE
 - STONE WALL
 - EDGE OF WATER
 - DELIMITED WETLANDS
 - CONCRETE CURB & BUTTER
 - CONCRETE CURB
 - EDGE OF PAVEMENT
 - ASPHALT PAVEMENT
 - WATER LINE
 - STORM SEWER
 - MANUAL GAS
 - OVERHEAD ELECTRIC
 - UNDERGROUND ELECTRIC
 - UNDERGROUND TELEPHONE
 - REBAR SPOT
 - INTERIOR CONTROL
 - SPOT ELEVATION
 - BUILDING
 - BRICK/CONCRETE PAVEMENT
 - MANHOLE
 - TOP OF WALL
 - BOTTOM OF WALL

- NOTES**
1. THE HORIZONTAL DATUM FOR THIS MAP IS THE WISCONSIN COUNTY COORDINATE SYSTEM (WCCS)-DANE ZONE.
 2. THE VERTICAL DATUM FOR THESE ELEVATIONS IS THE NORTH AMERICAN VERTICAL DATUM OF 1988. (NAD 88). THE REFERENCE BENCHMARK FOR THIS SURVEY IS THE BENCHMARK FOR SECTION 28, TOWN 8 NORTH, RANGE 10 EAST, COUNTY OF MADISON, WISCONSIN, 20104004821.
 3. CONTOUR INTERVAL IS ONE FOOT.
 4. FIELD WORK PERFORMED BY JSD PROFESSIONAL SERVICES, INC. IN NOVEMBER 2010.
 5. SURVEYING UTILITIES AND FEATURES SHOWN ON THIS MAP HAVE BEEN APPROXIMATED BY LOCATING SURVEYAL FEATURES AND APPROPRIATE LOCATING DEVICES HOTLINE FIELD MARKERS AND BY REFERENCE TO UTILITY 20104004821 MAPS. DODGE'S HOTLINE TICKET NO. 20104003294 & 20104004821.
 6. BEFORE EXCAVATION, APPROPRIATE UTILITY COMPANIES SHOULD BE CONTACTED FOR EXACT LOCATION OF UNDERGROUND UTILITIES CONTACT DODGE'S HOTLINE AT 1.800.424.8311.
 7. THE ACCURACY OF THE BENCHMARKS SHOWN ON THIS MAP SHALL BE VERIFIED BY THE SURVEYOR PRIOR TO THE COMMENCEMENT OF THE SURVEY WITHOUT THE ACCURACY OF THESE BENCHMARKS. WISCONSIN DOES NOT WARRANT THE ACCURACY OF THESE BENCHMARKS.
 8. SPOT ELEVATIONS SHOWN REFERENCE THE TOP BACK OF CURB, WHERE PRESENT.
 9. THIS PARCEL IS SUBJECT TO ALL EASEMENTS AND AGREEMENTS, BOTH RECORDED AND UNRECORDED.
 10. PRIVATE UTILITIES NOT MARKED IN THE FIELD OR PROVIDED IN RECORD DOCUMENTS, MAY NOT BE DEPICTED ON THIS SURVEY.

EXISTING CONDITIONS MAP

LOTS 1, 2 AND 3 OF CERTIFIED SURVEY MAP No. 12648, AS RECORDED IN VOLUME 79, ON PAGES 284-286, AS DOCUMENT No. 4512376, BEING A PART OF THE WEST 1/2 OF THE SOUTHWEST QUARTER OF SECTION 28 AND PART OF THE SOUTHEAST QUARTER OF THE SOUTHEAST QUARTER AND THE NORTHEAST QUARTER OF THE SOUTHEAST QUARTER OF SECTION 29, TOWNSHIP 8 NORTH, RANGE 10 EAST, CITY OF MADISON, DANE COUNTY, WISCONSIN

JSD PROJECT NO.: _____

DESIGN: _____

DRAWN: _____

APPROVED: _____

PLAN MODIFICATIONS: _____

DIGESTERS HOTLINE

Toll Free (800) 242-8511

Madison Area (608) 242-1151

Hearing Impaired TDD (608) 242-2289

www.DigestersHotline.com

SHEET NUMBER: **C-1.6T**

EXISTING CONDITIONS MAP

JSD Professional Services, Inc.

Engineers • Surveyors • Planners

BRITISH HILL TOWNSHIP WITH A PORTION OF SECTION 28, TOWNSHIP 8 NORTH, RANGE 10 EAST, CITY OF MADISON, WISCONSIN

• CIVIL ENGINEERING

• SURVEYING & MAPPING

• CONSTRUCTION SERVICES

• WATER RESOURCES

• PLANNING & DEVELOPMENT

• STRUCTURAL ENGINEERING

• LANDSCAPE ARCHITECTURE

MADISON REGIONAL OFFICE

161 HORIZON DRIVE, SUITE 101

MADISON, WI 53704

608.548.5001 PHONE 608.548.2255 FAX

MADISON | APPLETON

www.jsdinc.com

SERVICES PROVIDED TO:

MADISON COLLEGE

3550 ANDERSON ST.

MADISON, WI 53704