

- NOTES:
1. NO PARKING ALONG LENGTH OF FIRE LANE. SEE DETAIL FOR SIGNAGE INSTALLATION. APPROVED "FIRE LANE, NO PARKING" SIGNS PER IFC 503.3.3 SHALL BE PLACED AT A MAXIMUM OF 150' O.C. ON BOTH SIDES OF FIRE LANE ACCESS WAYS.
 2. SEE DETAIL SHEETS FOR MOUNTABLE CURB DETAIL TO BE USED WITHIN FIRE LANE AREA.
 3. AHB & SAC BUILDING WITHIN 500' OF REQUIRED FIRE HYDRANTS.
 4. ALL HYDRANTS ARE MORE THAN 40' FROM BUILDINGS.

BUILDING	HYDRANT # (WITHIN 500')
AHB	HYD. #1, #2, #3, #4
SAC	HYD. #5, #6
IC	HYD. #4, #5, #6

- FIRE LANE - 20'-0" WIDTH
- FIRE APPARATUS LANE - 20'-0" WIDTH
- GRASS PAVE PRODUCT SUPPORT LOADING MIN. 85K LBS.
- 1" THICK CONCRETE TO SUPPORT LOADING MIN. 85K LBS.
- EXISTING TREES TO REMAIN, TYPICAL
- FIRE LANE SIGN, TYP SIGN SYMBOL NTS



Project Title
Truax Gateway

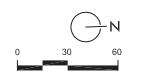
City of Madison,
 Wisconsin

Issued For: Approval
 Issue Date: 04/06/2011
 SAA Project No. 2434
 MC Project No. -
 Bid Pkg No. B11-025

Revision	Date



DRAWING
FIRE ACCESS PLAN



Sheet Number
F-101

File: P:\13401\2434-MTC-C.S.MP\13401-Fire.dwg User: phannon Printed: Apr 05, 2011 - 11:20am

Project Title

Truax
Gateway

City of Madison,
Wisconsin

Issued For: Approval
Issue Date: 04/06/2011
SAA Project No. 2434
MC Project No. -
Bid Pkg No. B11-025

Revision	Date

SAA DESIGN
GROUP

SAA Design Group, Inc.
717 John Nields Drive
Madison, WI 53713
Ph: 608-255-9900
F: 608-255-7750
www.saa-madison.com



Abilitate Design Forum
315 West First Street
Eshelburn, Illinois 61820
800-570-2000 Phone
608-550-2030 Fax
www.ablitem.com

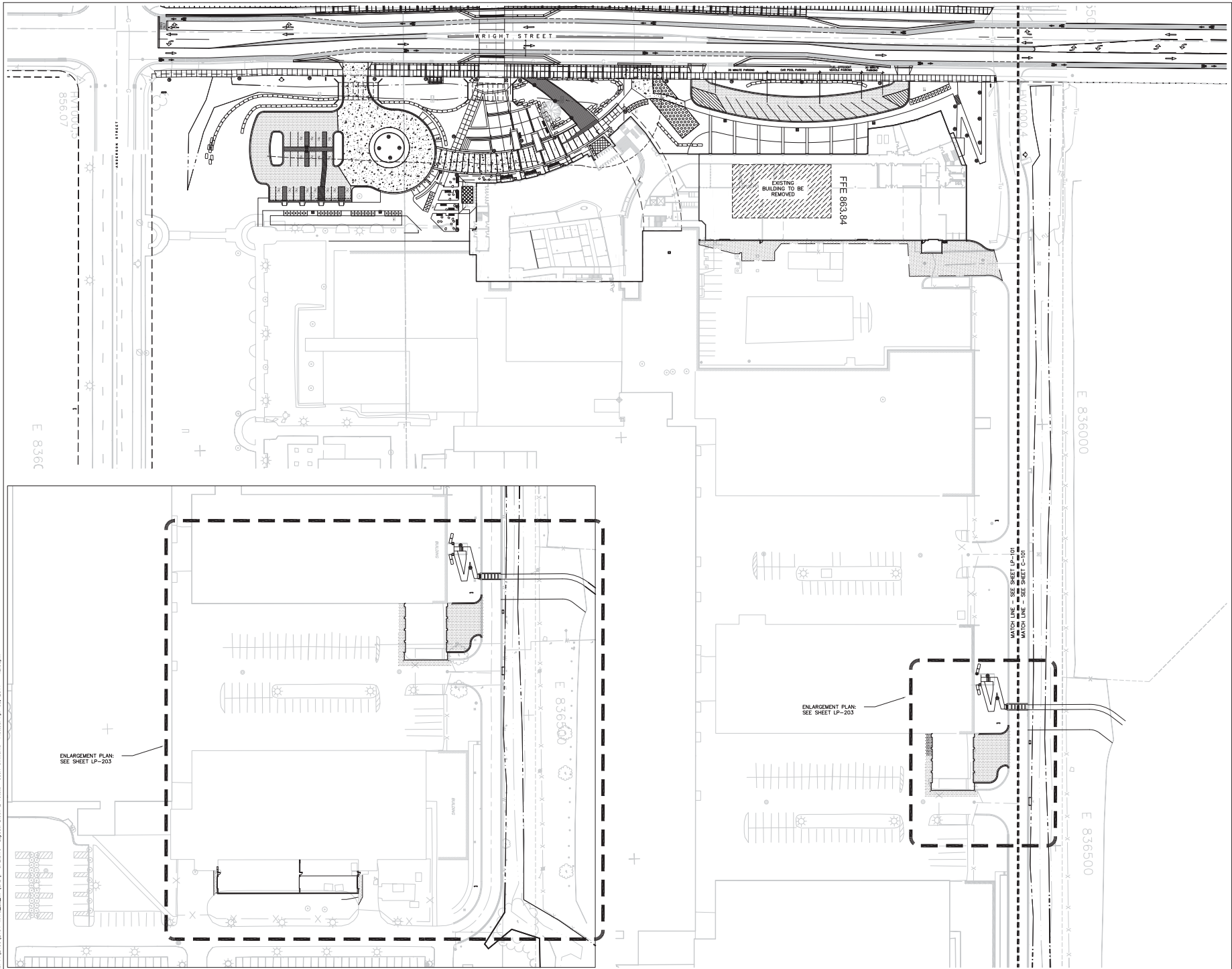
DRAWING

SITE LAYOUT PLAN

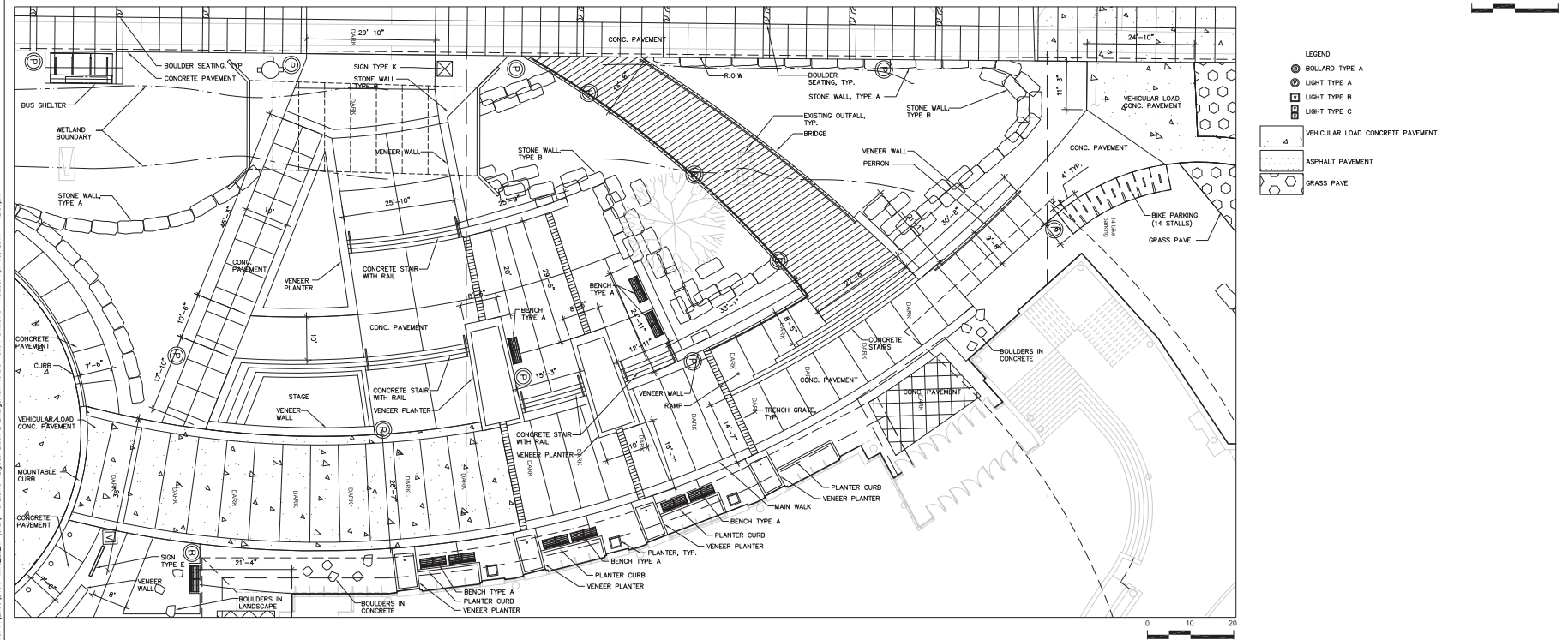
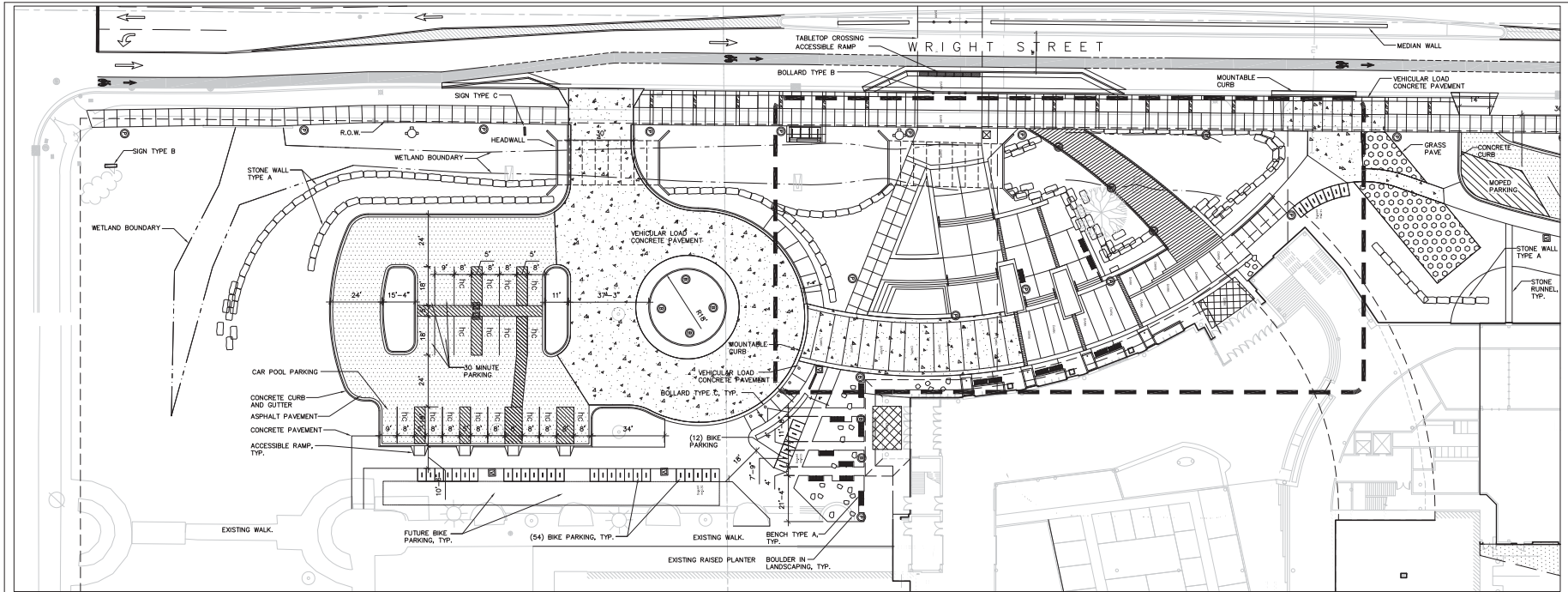


Sheet Number

LP-101



File: P:\3401\2434-MTC-C_S\PI\CAD\LP-SP22.DWG Layout: Block 2.mxd User: rambone Printed: Apr 05, 2011 11:30am



Project Title

Truax
Gateway

City of Madison,
Wisconsin

Issued For: Approval
 Issue Date: 04/06/2011
 SAA Project No. 2434
 MC Project No. -
 Bid Pkg No. B11-025

Revision	Date



SAA Design Group, Inc.
 717 John Hodges Drive
 Madison, WI 53713
 Ph: 608.255.9950
 Fax: 608.255.7750
 www.saa-madison.com



Conservation Design Group
 315 West First Street
 Eau Claire, WI 54601
 608.795.3000
 608.795.3000 Fax
 www.cdfirm.com

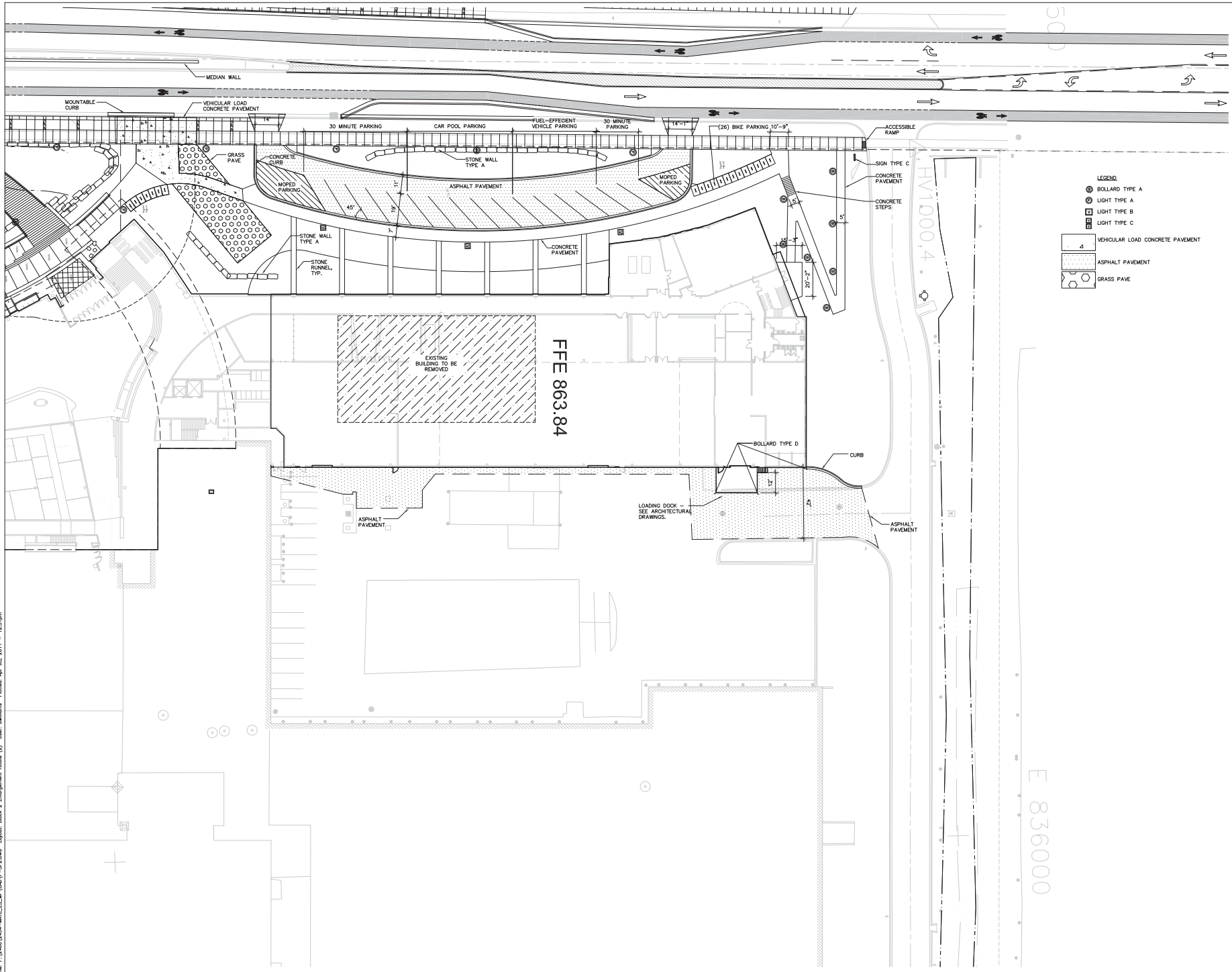
DRAWING
 SITE LAYOUT PLAN



Sheet Number

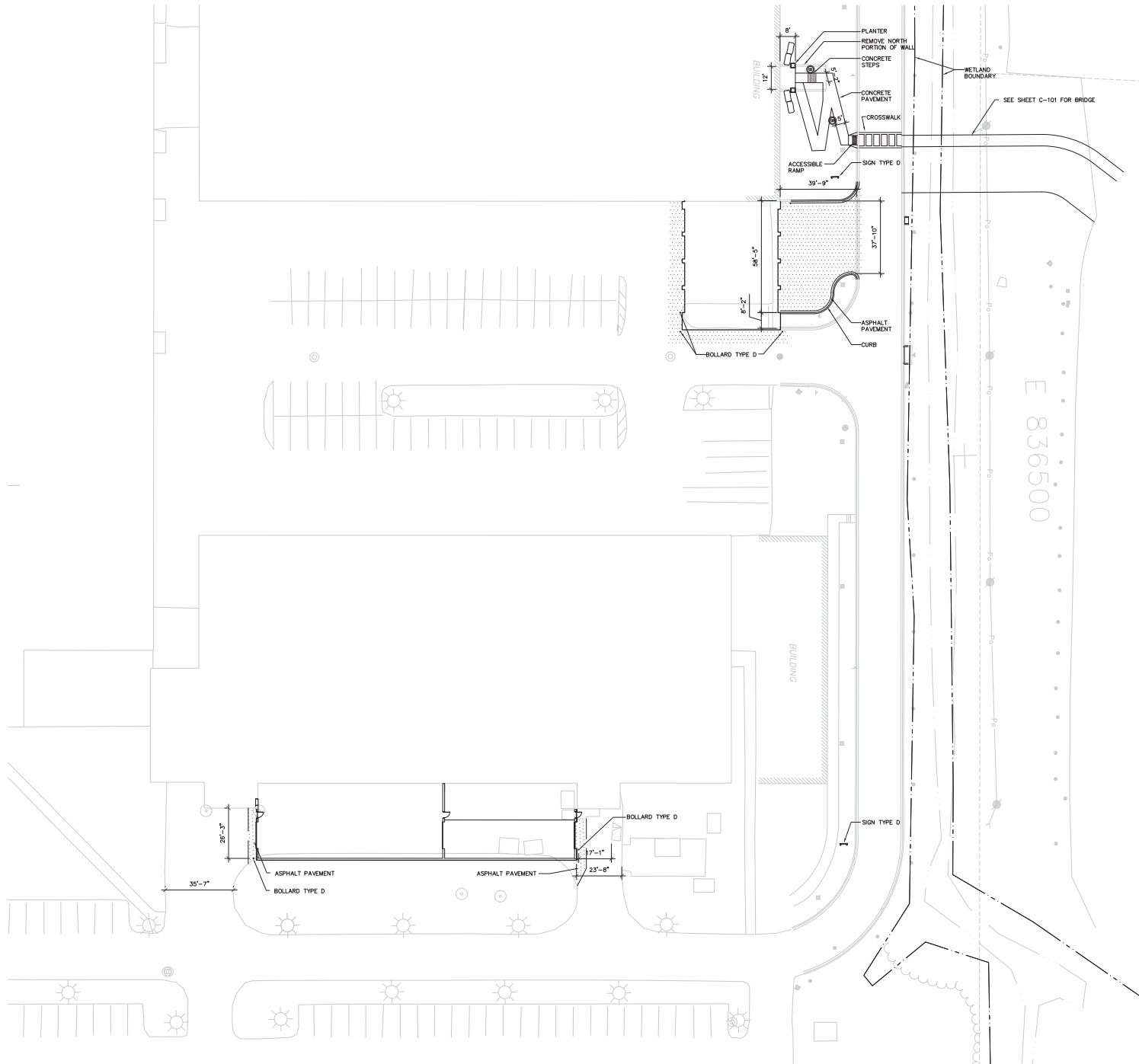
LP-201

File: P:\13401\2434-MC-LP-201\DWG\13401-2434-02.DWG Layout: Block 2 - Improvement.mxd User: mwilkins Friday, Apr 05, 2011 - 10:27am



File: P:\13401\2434-MC12-LS.MPI\0417-SP22.DWG Layout: Block 2 (Intersegment notes) (2) User: awilsons PlotDate: Apr 05, 2011 - 12:37pm

File: P:\31001\2424-MITC_C_S\PI\040\10-SP22.DWG Layout: Block 2 (Impovement notes) (3) User: wanktona PlotDate: Apr 05, 2011 - 12:37pm



LEGEND

- BOLLARD TYPE A
- LIGHT TYPE A
- LIGHT TYPE B
- LIGHT TYPE C
- VEHICULAR LOAD CONCRETE PAVEMENT
- ASPHALT PAVEMENT
- GRASS PAVE



Project Title

Truax Gateway

City of Madison, Wisconsin

Issued For: Approval
 Issue Date: 04/06/2011
 SAA Project No. 2434
 MC Project No. -
 Bid Pkg No. B11-025

Revision	Date

SAA DESIGN GROUP
 SAA Design Group, Inc.
 717 John Nokes Drive
 Healdsburg, WI 53121
 Ph: 608-233-0900
 Fax: 608-233-7750
 www.saa-mc.com

Generation Design Forum
 315 West First Street
 Elkhart, WI 54821
 608-295-2000 Phone
 608-295-2030 Fax
 www.gdfinc.com

DRAWING
 SITE LAYOUT PLAN



Sheet Number

LP-203

Project Title

Truax
Gateway

City of Madison,
Wisconsin

Issued For: Approval
Issue Date: 04/06/2011
SAA Project No. 2434
MC Project No. -
Bid Pkg No. B11-025

Revision Date

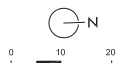
SAA DESIGN GROUP
SAA Design Group, Inc.
717 John Holmes Drive
Hochstadt, WI 53123
Ph: 608-233-0900
Fax: 608-233-7750
www.saa-design.com



Conservation Design Forum
315 West First Street
Eshelburn, Illinois 60126
630-595-3400 Phone
630-550-3030 Fax
www.cdfinc.com

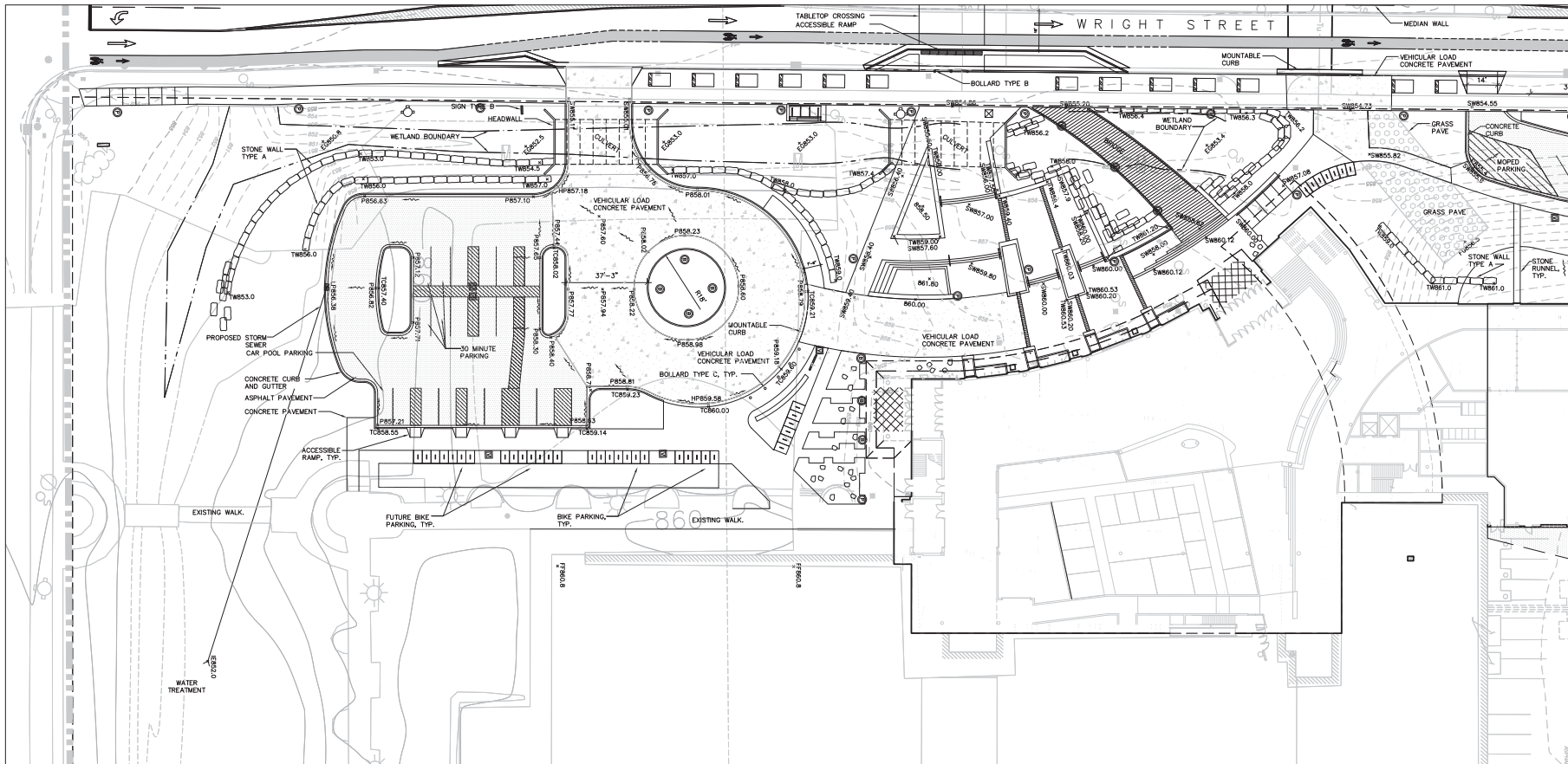
DRAWING

GATEWAY
SITE GRADING
PLAN



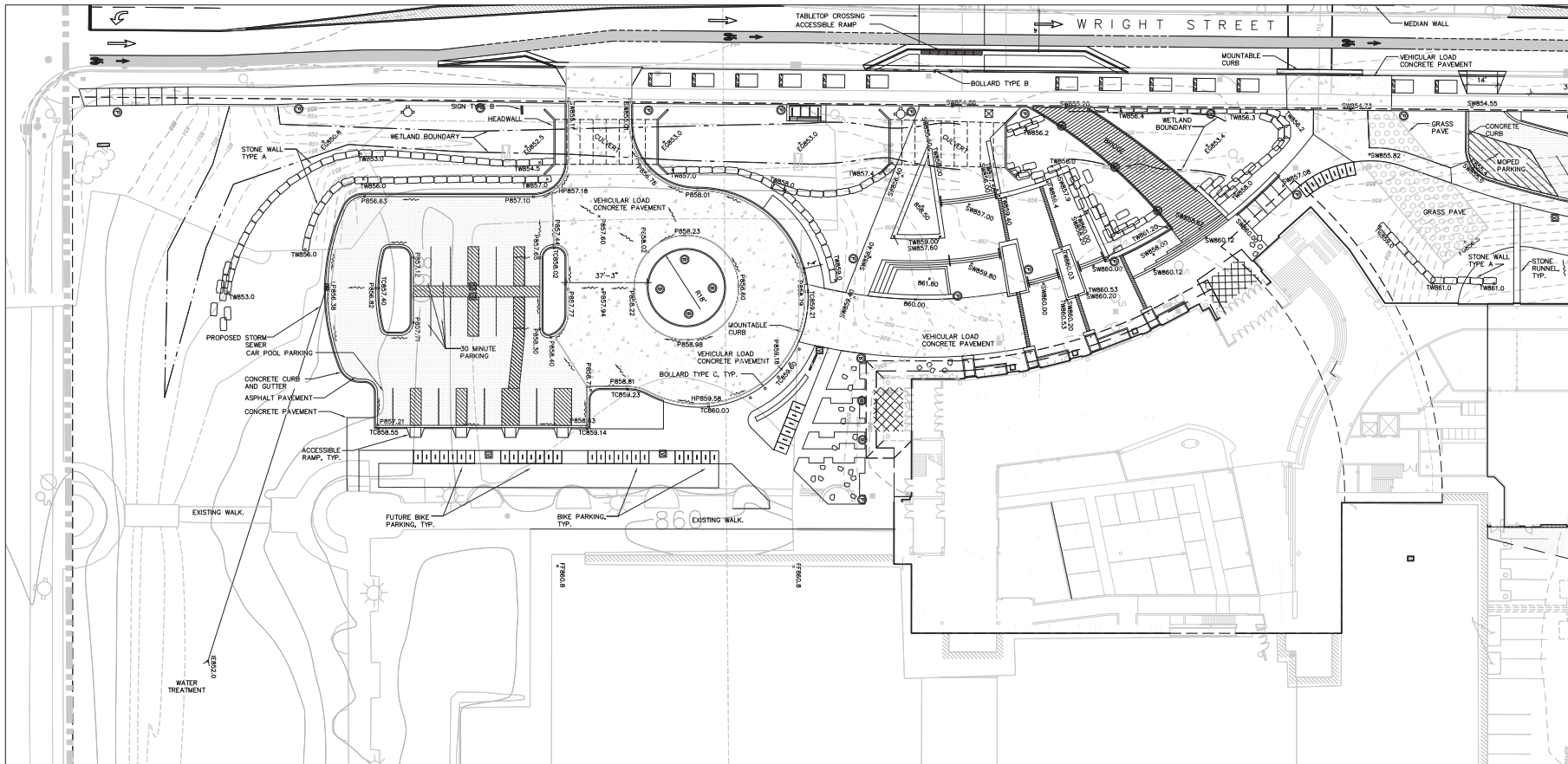
Sheet Number

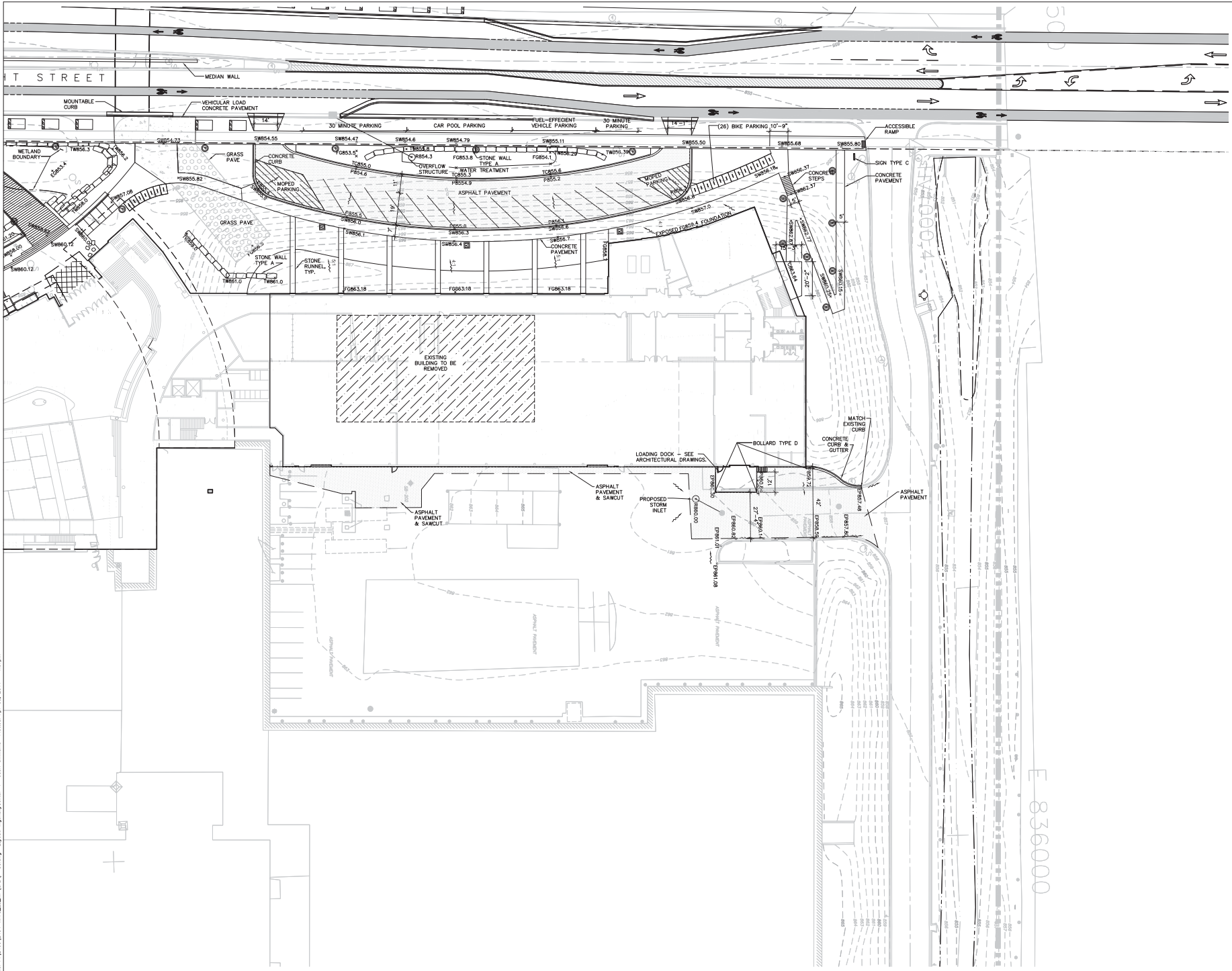
LP-301



File: P:\34001\2434-MC-LC-MP\CAD\10-SS.dwg Layout: GATEWAY-1 User: wmlwmsa P:\34001\2434-MC-LC-MP\CAD\10-SS.dwg

Revision	Date





File: P:\3400\3402\3402-MITC_15.MXD (DWG) - SS.dwg Layout: TruaxGatewayCenter-1 User: amellinas Plotted: Apr 05, 2011 1:27pm



Project Title

Truax
Gateway

City of Madison,
Wisconsin

Issued For: Approval
 Issue Date: 04/06/2011
 SAA Project No. 2434
 MC Project No. -
 Bid Pkg No. B11-025

Revision	Date



DRAWING
 GATEWAY
 SITE GRADING
 PLAN



Sheet Number

LP-302

Project Title

**Truax
Gateway**

**City of Madison,
Wisconsin**

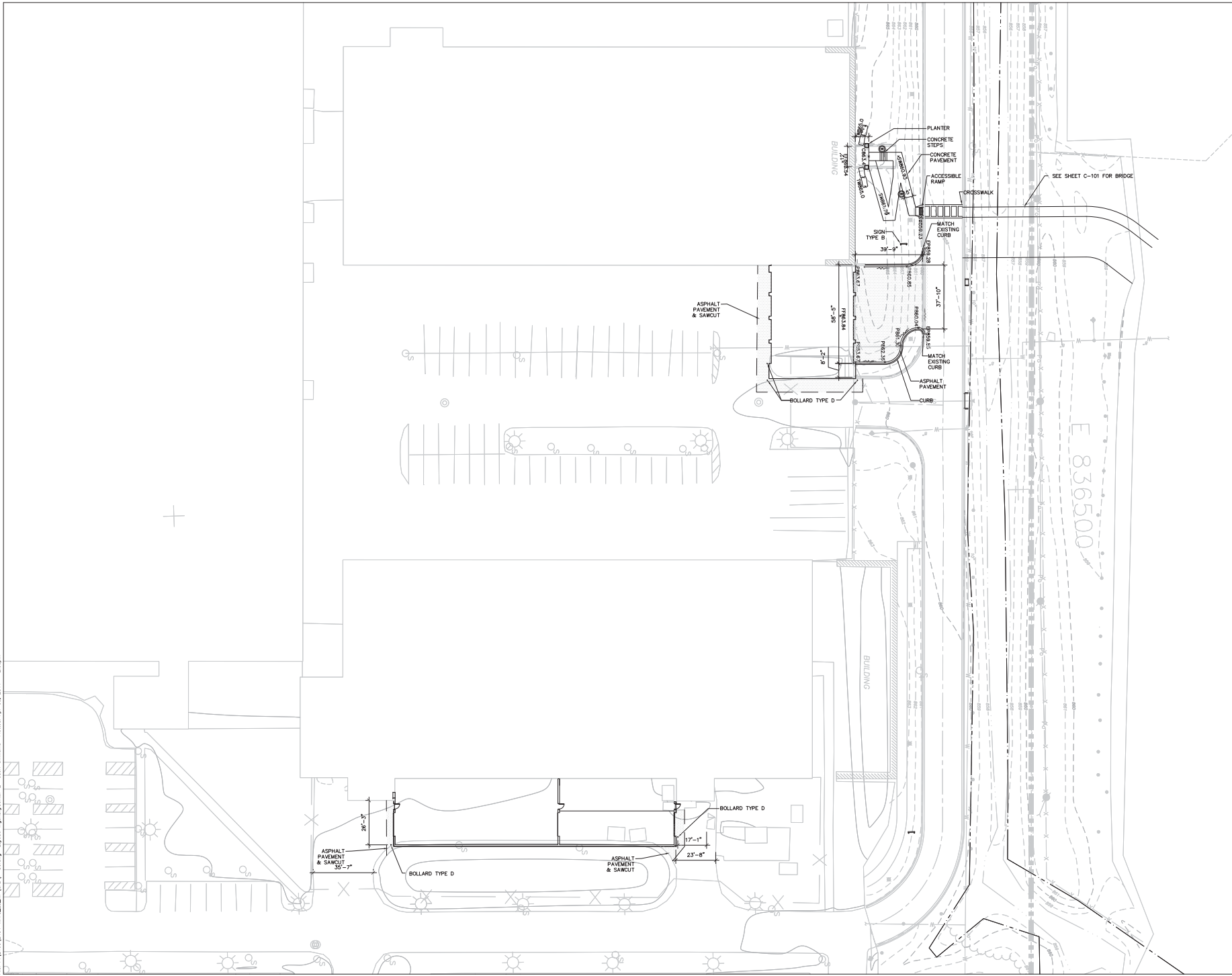
Issued For: Approval
Issue Date: 04/06/2011
SAA Project No. 2434
MC Project No. -
Bid Pkg No. B11-025

Revision	Date

DRAWING
GATEWAY
SITE GRADING
PLAN

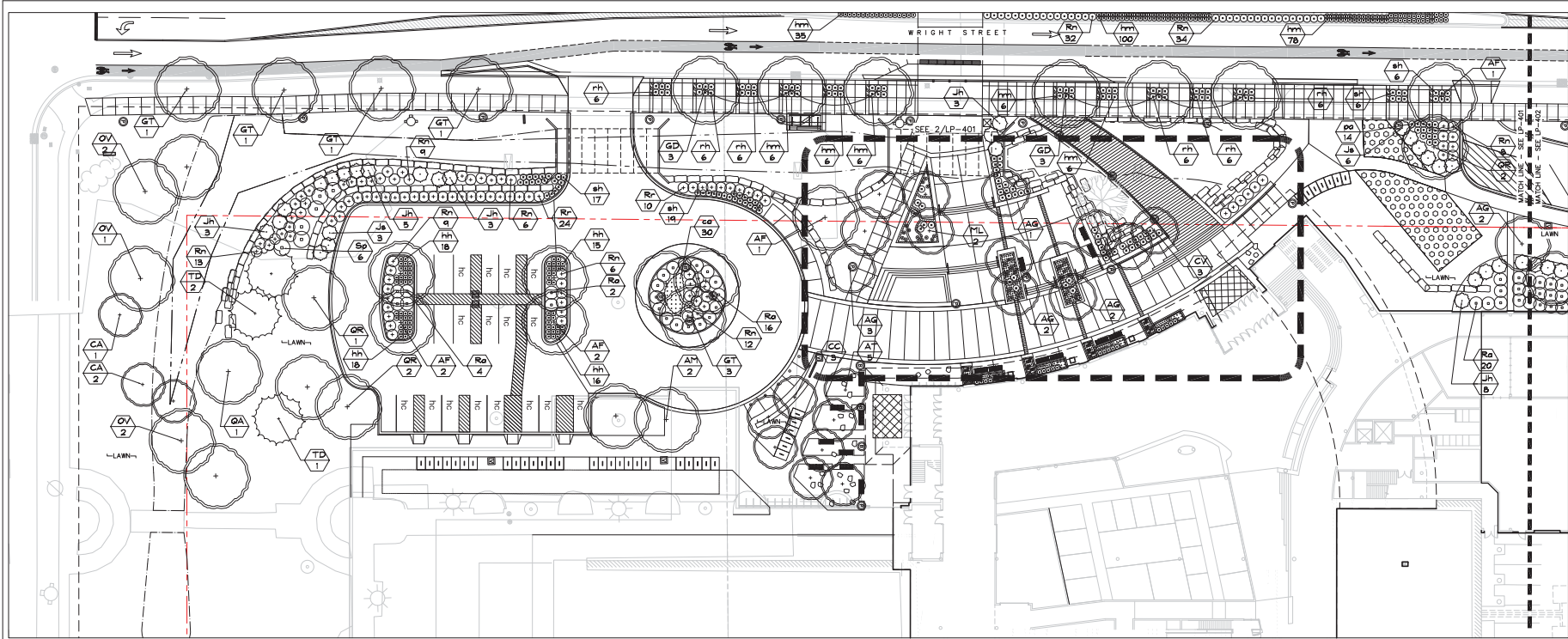


Sheet Number
LP-303



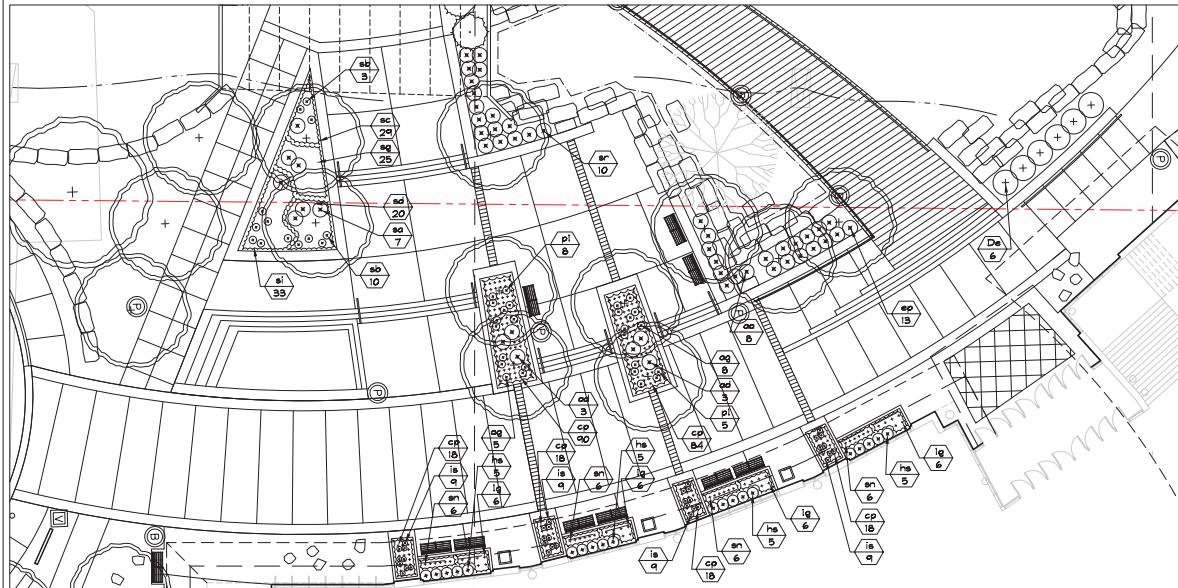
File: P:\31001\2434-MC\2-15\DWG\LP-303.dwg Layout: TruaxGateway-2 User: anilima Plotter: Apr 05, 2011 2:09pm

Revision	Date



1 GATEWAY LANDSCAPE PLAN – SOUTH

SCALE: 1"=20'-0"



2 GATEWAY LANDSCAPE PLAN ENLARGEMENT

SCALE: 1"=10'-0"

LANDSCAPE POINTS – DROP OFF AND PARKING AREA

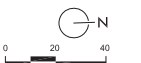
NUMBER OF TREES REQUIRED:
NUMBER OF PARKING STALLS 21
LOADING AREAS 1
CANOPY TREES REQUIRED 2

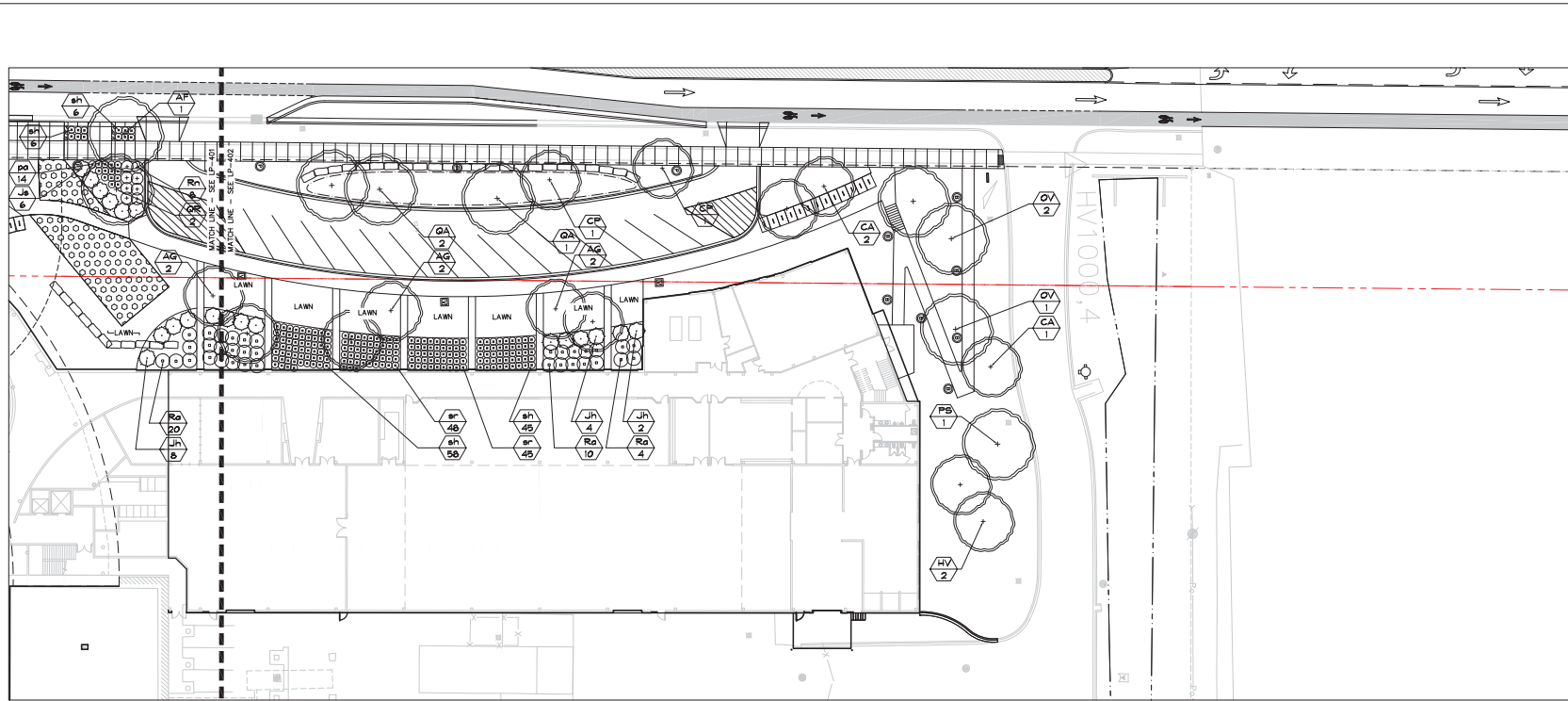
TABULATION OF POINTS PROVIDED:	2	0
REQUIRED CANOPY TREES	2	0
CANOPY TREES	10	350
TOTAL POINTS	350	350

NUMBER OF LANDSCAPE POINTS REQUIRED:
POINTS REQUIRED PER PARKING STALLS 103
POINTS REQUIRED PER LOADING AREA 75
TOTAL POINTS REQUIRED 178

LEGEND

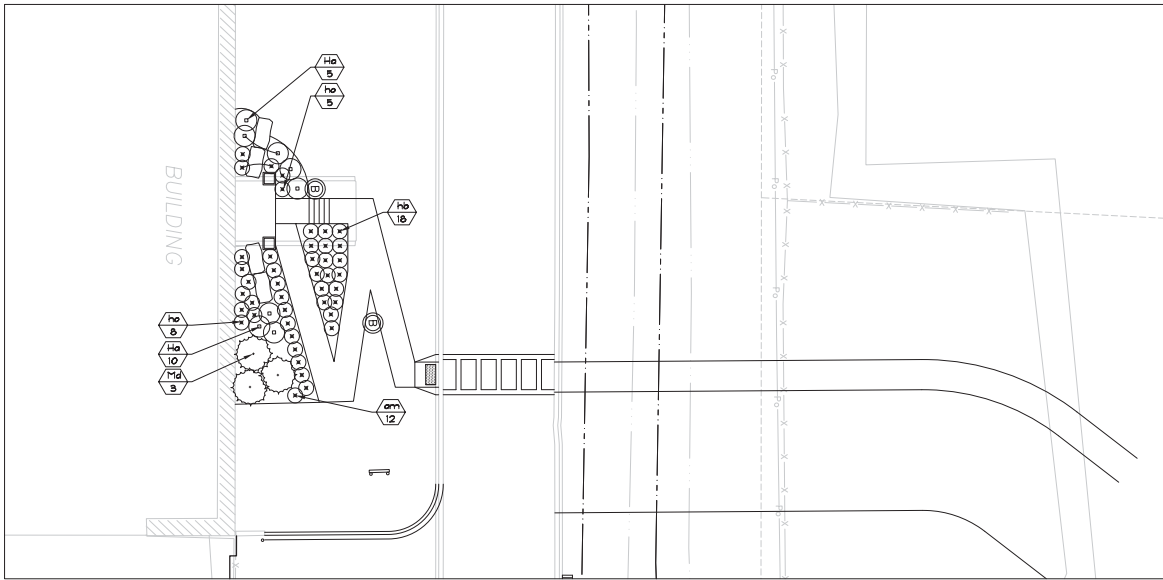
	ADDITIONAL PLANTING; SEE SHEET LP-410
	GRASS-PAVE AREA





1 GATEWAY LANDSCAPE PLAN – NORTH
LP-401

SCALE: 1"=20'-0"



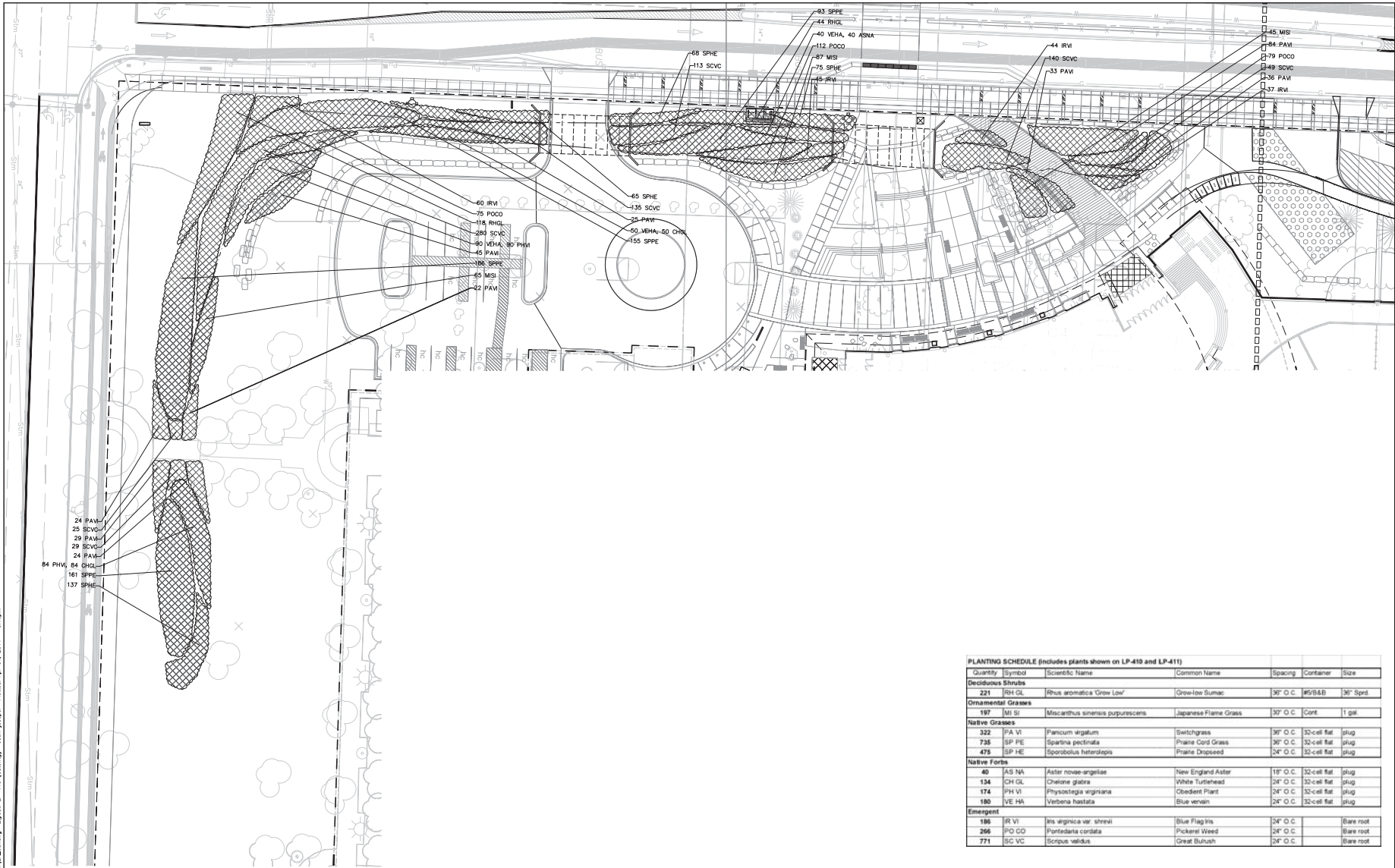
2 GATEWAY LANDSCAPE PLAN ENLARGEMENT – NORTH ENTRY AREA
LP-401

SCALE: 1"=10'-0"

LANDSCAPE POINTS – PARKING AREA			
NUMBER OF TREES REQUIRED:			
NUMBER OF PARKING STALLS	16	TABULATION OF POINTS PROVIDED:	
LOADING AREAS	1	REQUIRED CANOPY TREES	0 pts 1 0
CANOPY TREES REQUIRED	1	CANOPY TREES	35 pts 4 140
		ORNAMENTAL TREES	15 pts 5 75
NUMBER OF LANDSCAPE POINTS REQUIRED:			
POINTS REQUIRED PER PARKING STALLS	79	TOTAL POINTS	
POINTS REQUIRED PER LOADING AREA	75		
TOTAL POINTS REQUIRED	154	215 pts	

LEGEND:

- ADDITIONAL PLANTING; SEE SHEET LP-411
- GRASS-PAVE AREA



PLANTING SCHEDULE (Includes plants shown on LP-410 and LP-411)

Quantity	Symbol	Scientific Name	Common Name	Spacing	Container	Size
Deciduous Shrubs						
221	RH GL	Rhus aromatica 'Grow Low'	Grow-low Sumac	30" O.C.	#5/B&B	30" Spd.
Ornamental Grasses						
197	MI SI	Miscanthus sinensis purpureus	Japanese Flame Grass	30" O.C.	Cont.	1 gal.
Native Grasses						
322	PA VI	Panicum argatum	Switchgrass	30" O.C.	32-cell flat	plug
735	SP PE	Spartina pectinata	Prairie Cord Grass	30" O.C.	32-cell flat	plug
475	SP HE	Sporobolus heterolepis	Prairie Dropseed	24" O.C.	32-cell flat	plug
Native Forbs						
40	AS NA	Aster novae-angliae	New England Aster	18" O.C.	32-cell flat	plug
136	CH GL	Chamae glabra	White Turtleneck	24" O.C.	32-cell flat	plug
174	PH VI	Physostegia virginiana	Obedient Plant	24" O.C.	32-cell flat	plug
180	VE HA	Verbena hastata	Blue vervain	24" O.C.	32-cell flat	plug
Emergent						
196	IR VI	Iris virginica var. shrevei	Blue Flag Iris	24" O.C.		Bare root
266	PO CO	Pontederica cordata	Pickering Weed	24" O.C.		Bare root
771	SC VC	Scirpus validus	Great Bulrush	24" O.C.		Bare root

File: P:\projects\11006.00 MTC Truax Landscape Design\08_DWG\04L_masthead\LP_offering Layout_LP-410 (Green).dwg User: jroger Printed: Apr 04, 2011 - 5:16pm

Project Title

Truax
Gateway

City of Madison,
Wisconsin

Issued For: Approval
Issue Date: 04/06/2011
SAA Project No. 2434
MC Project No. -
Bid Pkg No. B11-025

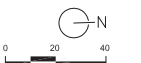
Revision Date



Landscape Architect
Conservation Design Forum
175 West First Street
Erlbaum, Illinois 60126
630.550.2000 Phone
630.550.2030 Fax
www.cdfinc.com

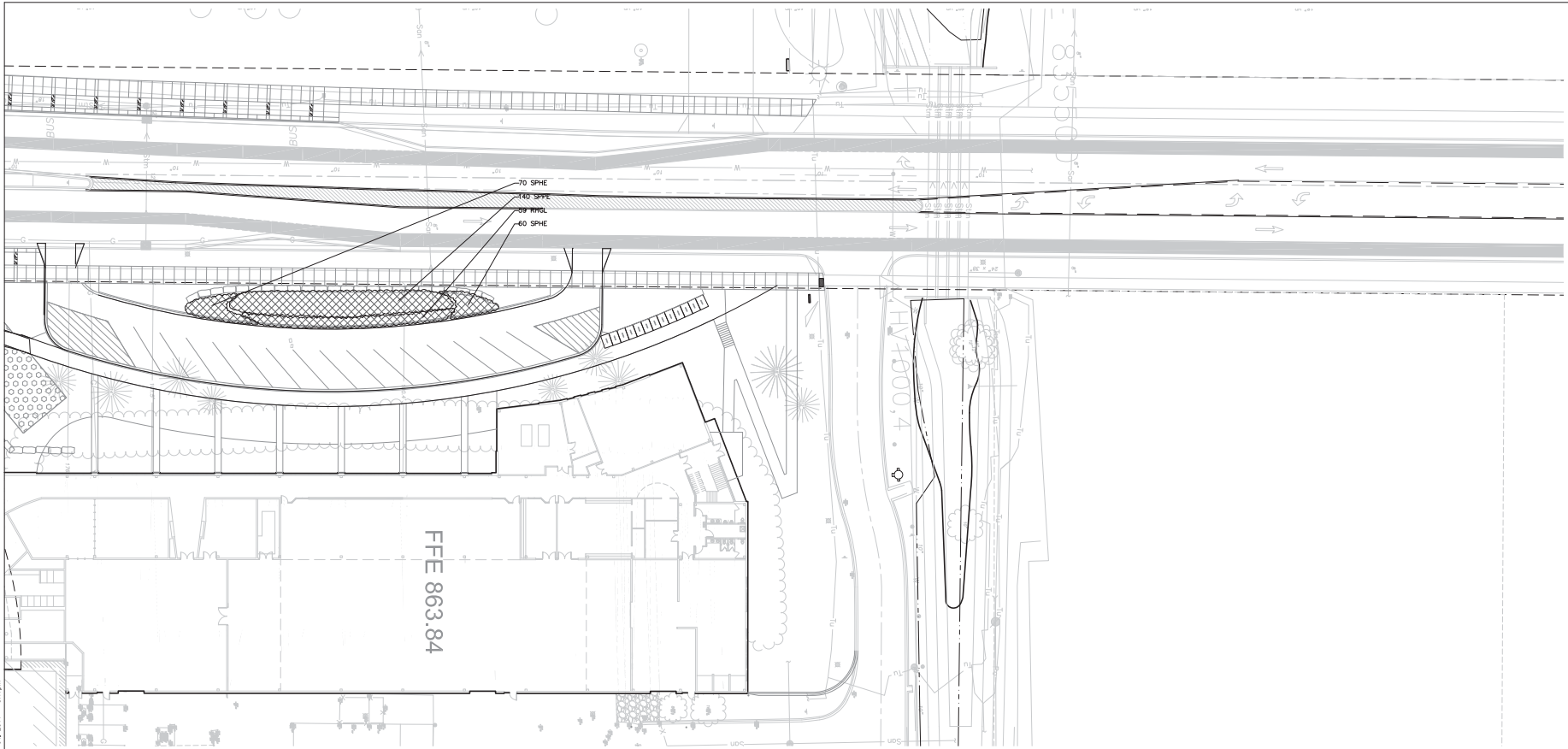
DRAWING

SITE LAYOUT PLAN



Sheet Number

LP-411



PLANTING SCHEDULE (includes plants shown on LP-410 and LP-411)

Quantity	Symbol	Scientific Name	Common Name	Spacing	Container	Size
Deciduous Shrubs						
221	RH GL	Rhus aromatica 'Grow Low'	Grow-low Sumac	36" O.C.	#5&B	36" Sprd
Ornamental Grasses						
197	Mt. GI	Miscanthus sinensis 'purpureus'	Japanese Flame Grass	30" O.C.	Cont	1 gal
Native Grasses						
322	PA VI	Panicum virgatum	Switchgrass	36" O.C.	32-cell fat	plug
735	SP PE	Spartina pectinata	Prairie Cord Grass	36" O.C.	32-cell fat	plug
475	SP HE	Sporobolus heterolepis	Prairie Dropseed	24" O.C.	32-cell fat	plug
Native Forbs						
40	AS NA	Aster novae-angliae	New England Aster	18" O.C.	32-cell fat	plug
134	CH GL	Chelone glabra	White Turtlehead	24" O.C.	32-cell fat	plug
174	PH VI	Physostegia virginiana	Obedient Plant	24" O.C.	32-cell fat	plug
180	VE HA	Verbena hastata	Blue vervain	24" O.C.	32-cell fat	plug
Emergent						
186	IR VI	Iris virginica var. strobil	Blue Flag Iris	24" O.C.		Bare root
266	PO OD	Pontederia cordata	Pickering Weed	24" O.C.		Bare root
771	SC VC	Scirpus validus	Great Bulrush	24" O.C.		Bare root

LANDSCAPE PLANT LEGEND

Symbol	Botanical name	Common Name	Size	Root	Quantity	Comments
SHADE TREES						
AF	Acer x freemanii 'Morgan'	Morgan Freeman Maple	2.5" Cal.	B&B	--	
AM	Acer miyabei 'Morton'	State Street Maple	2.5" Cal.	B&B	--	
BN	Betula nigra 'Heritage'	Heritage River Birch	2.5" Cal.	B&B	--	
CJ	Cercidiphyllum japonicum	Katsura Tree	2.5" Cal.	B&B	--	
GD	Gymnocladus dioicis	Kentucky Coffeetree	2.5" Cal.	B&B	--	
GT	Gleditsia triacanthos 'Skymaster'	Skymaster Honeylocust	2.5" Cal.	B&B	--	
TD	Toxodum distichum	Bald Cypress	2.5" Cal.	B&B	--	
OV	Ostrya virginiana	Hop Hornbeam	2.5" Cal.	B&B	--	
PS	Prunus serotina	Black Cherry	2.5" Cal.	B&B	--	
QA	Quercus alba	Swamp White Oak	2.5" Cal.	B&B	--	
QR	Quercus rubra	Red Oak	2.5" Cal.	B&B	--	

ORNAMENTAL TREES						
AG	Amelanchier x grandifolia 'Autumn Brilliance'	Autumn Brilliance Serviceberry	1.5" Cal.	B&B	--	
AT	Acer truncatum	Purpleleaf Maple	1.5" Cal.	B&B	--	
CA	Cornus alternifolia	Pagoda Dogwood	1.5" Cal.	B&B	--	
CC	Cercis canadensis	Redbud	1.5" Cal.	B&B	--	
CP	Crataegus phaenopyrum	Washington Hawthorne	1.5" Cal.	B&B	--	
CV	Chionanthus virginicus	White Fringe Tree	1.5" Cal.	B&B	--	
HV	Hamamelis virginiana	Common Witch Hazel	1.5" Cal.	B&B	--	
ML	Magnolia x loebneri	Loebner Magnolia	1.5" Cal.	B&B	--	

EVERGREEN TREES						
PA	Picea abies	Norway Spruce	8' Ht.	B&B	--	
PG	Picea glauca var. densata	Black Hills Spruce	8' Ht.	B&B	--	

SHRUB TYPE A (> 8' ht.)						
Om	Cornus mas 'Golden Glory'	Golden Glory Corneliancherry Dogwood	3'-5' Ht.	B&B	--	
Cr	Cornus racemosa	Gray Dogwood	3'-5' Ht.	B&B	--	
Cs	Cornus sericea	Redosier Dogwood	3'-5' Ht.	B&B	--	
RT	Rhus typhina 'Laciniata'	Cutleaf Staghorn Sumac	3'-5' Ht.	B&B	--	

SHRUB TYPE B (4'-8' ht.)						
Ca	Clethra alnifolia 'Hummingbird'	Hummingbird Clethra	5 Gal.	CG	--	
Cl	Cotoneaster lucidus	Hedge Cotoneaster	5 Gal.	CG	--	
Cf	Calycanthus floridus	Carolina Allspice	5 Gal.	CG	--	
Hp	Hydrangea paniculata 'Limelight'	Panicle Hydrangea	5 Gal.	CG	--	
Rr	Rosa 'Radsunny'	The Sunny Knock Out Rose	5 Gal.	CG	--	
Sp	Salix purpurea 'Nana'	Dwarf Arctic Blue Willow	5 Gal.	CG	--	
Vd	Viburnum dentatum 'Autumn Jazz'	Autumn Jazz Arrowwood Viburnum	5 Gal.	CG	--	

Symbol	Botanical name	Common Name	Size	Root	Quantity	Comments
SHRUB TYPE C (< 4' ht.)						
Bg	Buxux 'Green Velvet'	Green Velvet Boxwood	3 Gal.	CG	--	
Ce	Ceanothus americanus	New Jersey Tea	3 Gal.	CG	--	
De	Deutzia gracilis	Slender Deutzia	3 Gal.	CG	--	
Di	Dierilla lonicera	Dwarf Bush Honeysuckle	3 Gal.	CG	--	
Fg	Fothergilla gardenii 'Mt. Airy'	Mt. Airy Dwarf Fothergilla	3 Gal.	CG	--	
Ha	Hydrangea arborescens 'Annabelle'	Annabelle Hydrangea	3 Gal.	CG	--	
Ra	Rhus aromatica 'Gro-Low'	Gro-Low Fragrant Sumac	3 Gal.	CG	--	
Rn	Rosa 'Nearly Wild'	Nearly Wild Shrub Rose	3 Gal.	CG	--	
Vo	Viburnum opulus 'Nanum'	European Cranberrybush	3 Gal.	CG	--	

SHRUB TYPE D (Evergreen; 5'-8' Ht.)						
Tr	Thuja occidentalis 'Robusta'	Ware or Robusta Juniper	3 Gal.	CG	--	

SHRUB TYPE D (Evergreen; 2'-5' Ht.)						
Jb	Juniperus squamata 'Blue Star'	Blue Star Juniper	3 Gal.	CG	--	
Jh	Juniperus horizontalis 'Bar Harbor'	Bar Harbor Creeping Juniper	3 Gal.	CG	--	
Jp	Juniperus 'Pfitzeriana Compacta'	Compact Pfitzer Juniper	3 Gal.	CG	--	
Js	Juniperus chinensis 'Sea Green'	Sea Green Juniper	3 Gal.	CG	--	
Md	Microbiota decussata	Siberian Cypress	3 Gal.	CG	--	
Tm	Taxus x media 'Tauntanii'	Taunton Yew	3 Gal.	CG	--	

PERENNIALS/GRASSES/GROUNDCOVERS						
aa	Astilbe x arendsii 'White Gloria'	White Gloria Astilbe	1 Gal.	CG	--	
ac	Aquilegia canadensis	American Columbine	1 Gal.	CG	--	
ad	Aster divaricatus	White Wood Aster	1 Gal.	CG	--	
ag	Allium 'GlobeMASTER'	GlobeMASTER Onion	1 Gal.	CG	--	
am	Alchemilla ssp.	Lady's Mantle	1 Gal.	CG	--	
ar	Ajuga reptans	Bugleweed	1 Gal.	CG	--	
ca	Calamagrostis acutiflora 'Kari Foerster'	Kari Foerster Feather Reed Grass	1 Gal.	CG	--	
cl	Chasmanthium latifolia	Northern Sea Oats	1 Gal.	CG	--	
cp	Carex pennsylvanica	Pennsylvania Sedge	1 Gal.	CG	--	
cs	Careopsis grandiflora 'Sunray'	Sunray Tickseed	1 Gal.	CG	--	
ep	Echinacea purpurea	Purple Coneflower	1 Gal.	CG	--	
hb	Hosta 'Blue Angel'	Blue Angel Hosta	1 Gal.	CG	--	
ho	Hosta 'Royal Standard'	Royal Standard Hosta	1 Gal.	CG	--	
hh	Hemerocallis 'Happy Returns'	Happy Returns Daylily	1 Gal.	CG	--	
lg	Lavandula x intermedia 'Grosso'	Grosso Lavender	1 Gal.	CG	--	
hs	Helictotrichon sempervirens	Blue Oat Grass	1 Gal.	CG	--	
hm	Hemerocallis 'Mini Stella'	Mini Stella Daylily	1 Gal.	CG	--	
is	Iris siberica 'Caesar's Brother'	Caesar's Brother Siberian Iris	1 Gal.	CG	--	
mf	Monarda 'Petite Delight'	Petite Delight Beebalm	1 Gal.	CG	--	
nf	Nepeta x fassenii 'Six Hills Giant'	Six Hills Giant Catmint	1 Gal.	CG	--	
pl	Phlox subulata	Creeping Phlox	1 Gal.	CG	--	
ps	Panicum virgatum 'Shenandoah'	Shenandoah Switch Grass	1 Gal.	CG	--	
pa	Pervoskia atriplicifolia 'Langin'	Langin Russian Sage	1 Gal.	CG	--	
pq	Parthenocissus quinquefolia 'Star Showers'	Star Showers Virginia Creeper	1 Gal.	CG	--	
rh	Rudbeckia fulgida var. Sullivantii	Goldstrum Black Eyed Susan	1 Gal.	CG	--	
sh	Sporobolus heterolepis	Prairie Dropseed	1 Gal.	CG	--	
sa	Sedum 'Autumn Joy'	Autumn Joy Sedum	1 Gal.	CG	--	
sb	Sedum spectabile 'Brilliant'	Brilliant Sedum	1 Gal.	CG	--	
sc	Sedum cauticula 'Sunset Cloud'	Sunset Cloud Sedum	1 Gal.	CG	--	
sd	Sedum divergens	Cascade Stonecrop	1 Gal.	CG	--	
sg	Sedum grisbachii	Stonecrop	1 Gal.	CG	--	
sl	Sedum hybridum 'Immergrunchen'	Immergrunchen Stonecrop	1 Gal.	CG	--	
sn	Salvia nemerosa 'May Night'	May Night Salvia	1 Gal.	CG	--	



Project Title

Truax Gateway

City of Madison, Wisconsin

Issued For: Approval

Issue Date: 04/06/2011

SAA Project No. 2434

MC Project No. -

Bid Pkg No. B11-025

Revision

Date



SAA Design Group, Inc.

717 John Nields Drive

Madison, WI 53713

Ph: 608-253-0900

Fx: 608-253-7750

www.saa-design.com



Matthew J. DeWitt
 Professional Engineer
 License No. 100000000
 State of Wisconsin
 Exp. 12/31/2011

DRAWING

LANDSCAPE PLANT SCHEDULE

Sheet Number

LP-420



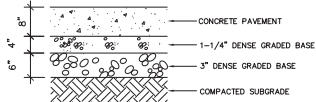
NOTES:
1. MEDIUM BROOM FINISH, PERPENDICULAR TO DIRECTION OF TRAVEL, UNLESS OTHERWISE STATED.
2. PROVIDE EXPANSION JOINTS 30' ALL WAYS, MINIMUM.
3. STANDARD COLOR CONCRETE UNLESS NOTED.



CONCRETE PAVEMENT

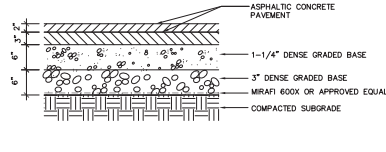
SCALE 1" = 1'-0"

NOTES:
1. LONGITUDINAL (EXPANSION) JOINTS SHALL HAVE 24" LONG #4 EPOXY COATED REBAR AT 30" O.C. AT A DEPTH OF 3 3/4" ± 1"
2. TRANSVERSE JOINTS SHALL HAVE 18" LONG, 1" DIA. EPOXY COATED, SMOOTH DOWEL BARS AT 72" O.C. AT 4" DEPTH.
3. STANDARD CONCRETE COLORED UNLESS NOTED.



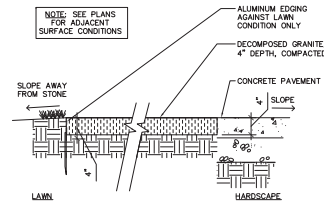
VEHICULAR LOAD CONCRETE

SCALE 1" = 1'-0"



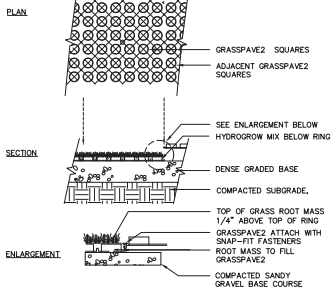
ASPHALT PAVEMENT

SCALE 1" = 1'-0"



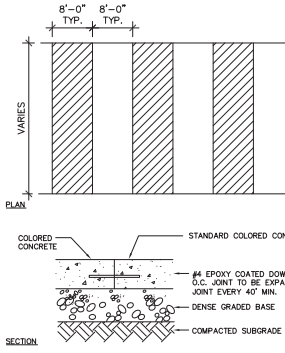
GRAVEL SURFACING

SCALE 1" = 1'-0"



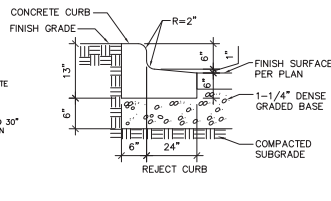
GRASS PAVE

SCALE 1" = 1'-0"



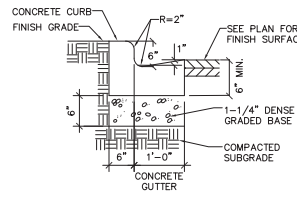
MAIN WALK

SCALE 1" = 1'-0"



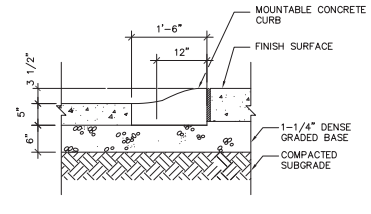
18" REJECT CURB

SCALE 1" = 1'-0"



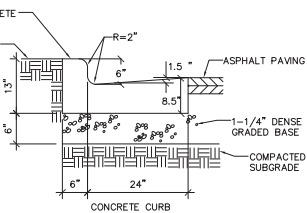
18" CONCRETE CURB

SCALE 1" = 1'-0"



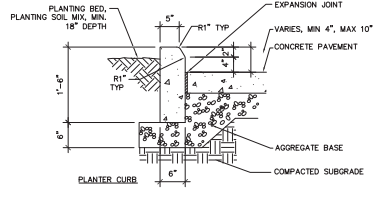
MOUNTABLE CURB

SCALE 1" = 1'-0"



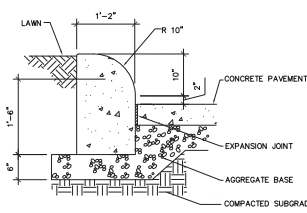
30" CONCRETE CURB

SCALE 1" = 1'-0"



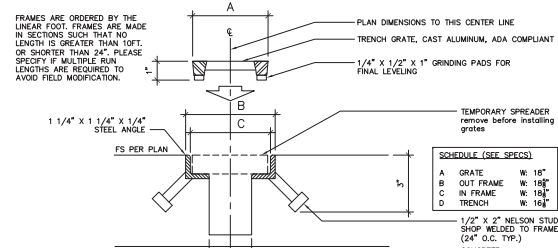
PLANTER CURB

SCALE 1" = 1'-0"



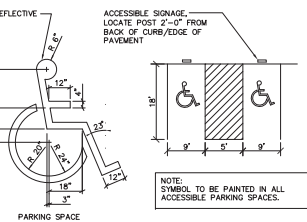
LAWN PANEL

SCALE 1" = 1'-0"



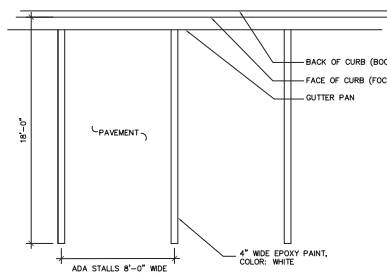
TRENCH GRATE

SCALE 1" = 1'-0"



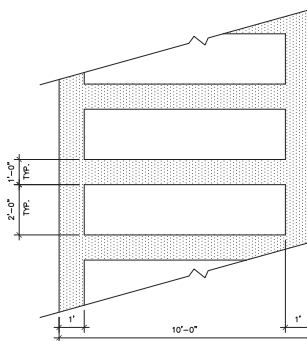
ACCESSIBLE PARKING PAVEMENT MARKING

SCALE 1" = 1'-0"



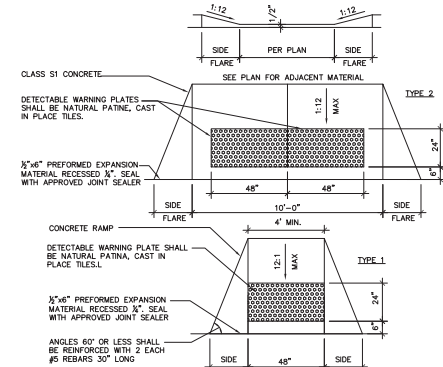
PAVEMENT STRIPING

SCALE 1" = 1'-0"



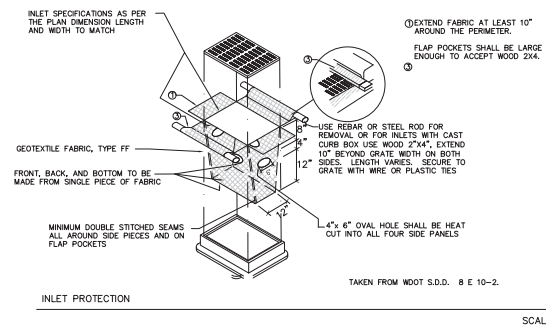
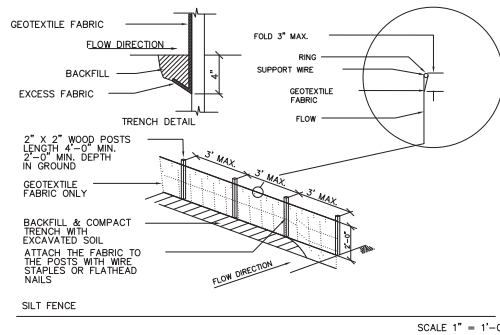
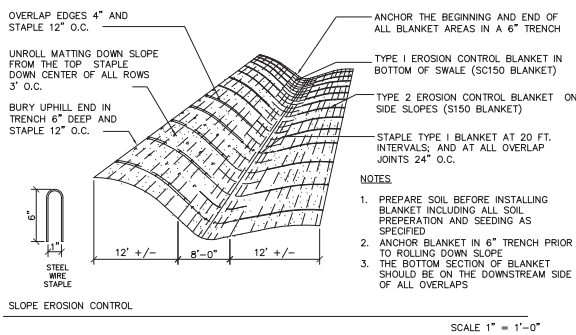
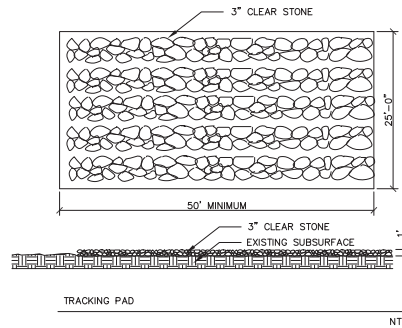
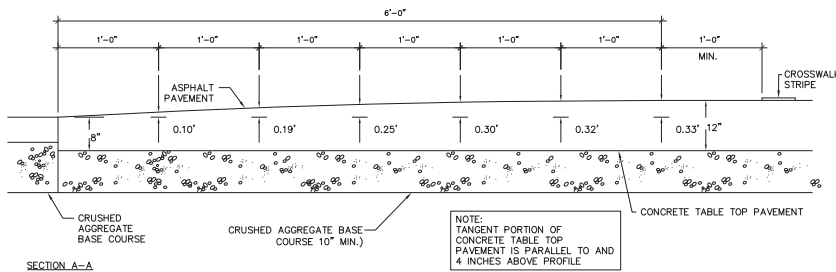
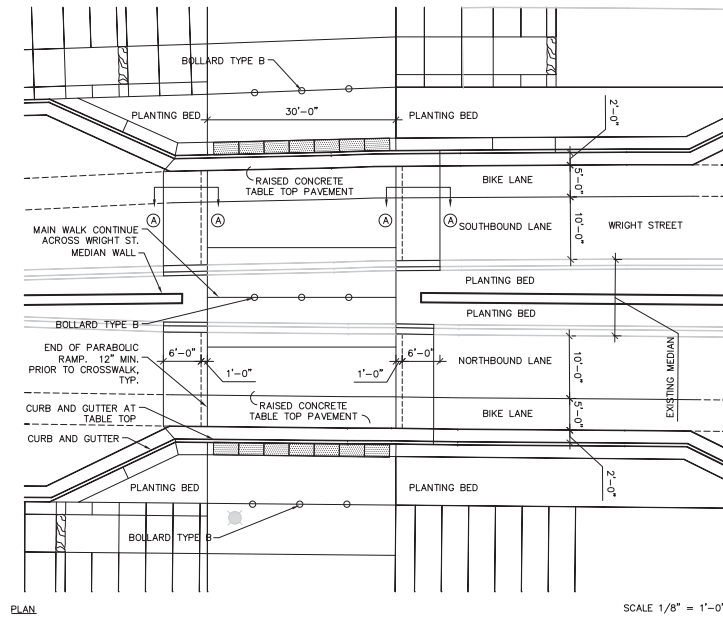
CROSSWALK STRIPING

SCALE 1" = 1'-0"

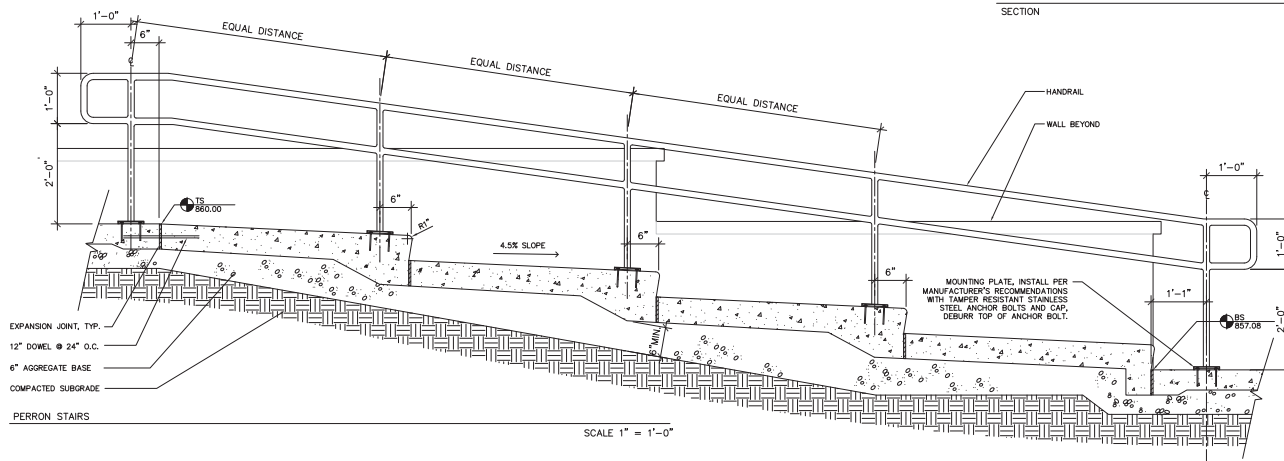
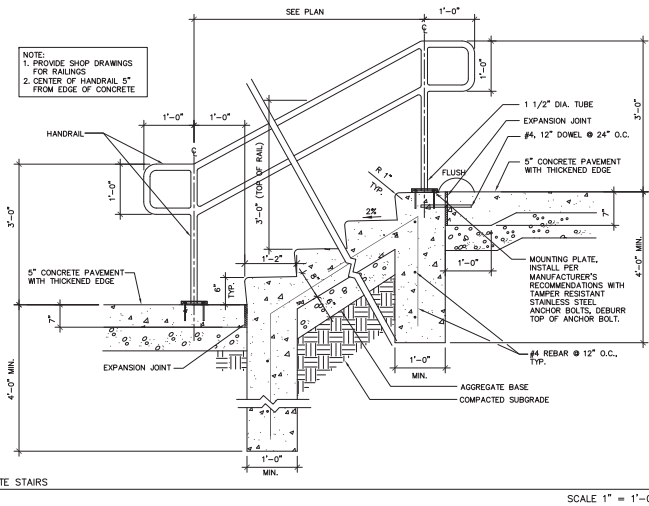
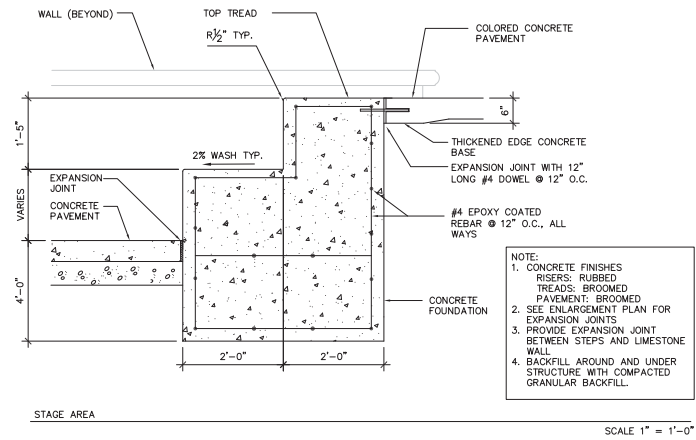
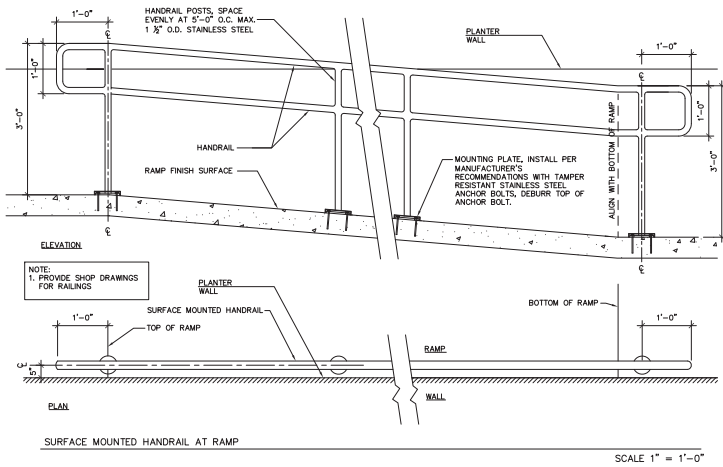


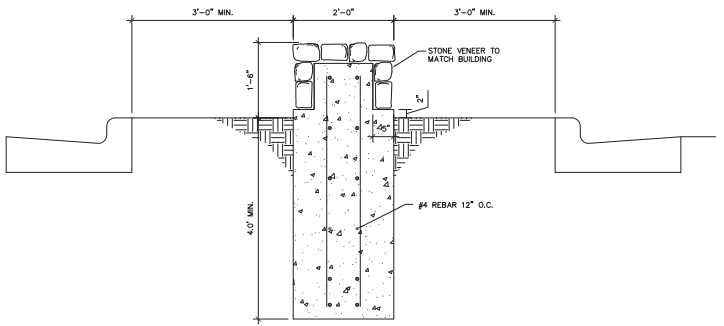
ACCESSIBLE RAMP

SCALE 1" = 1'-0"



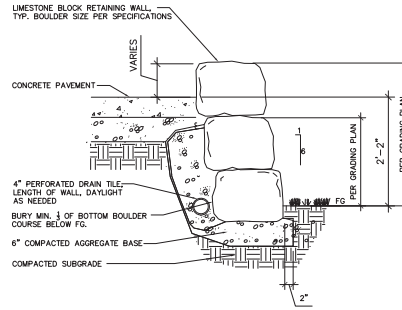
File: P:\3401\2434-MC-CES_MPT\04\10-2-11.dwg Layout: D-2 User: mawhite PlotDate: Apr 05, 2011 11:34am





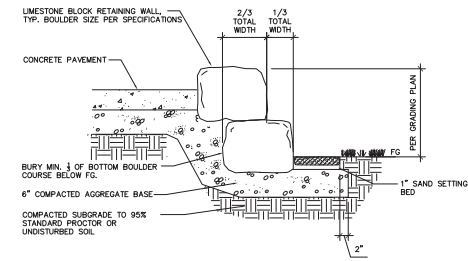
MEDIAN WALL

SCALE 1" = 1'-0"



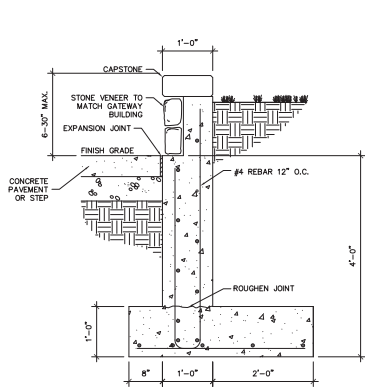
STONE WALL A SECTION

SCALE 1" = 1'-0"



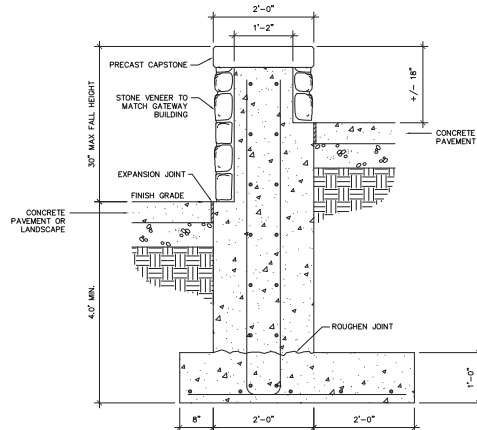
STONE WALL B SECTION

SCALE 1" = 1'-0"



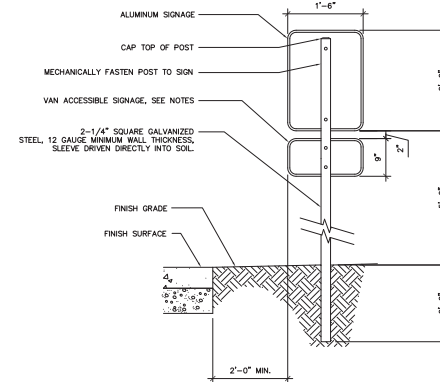
VENER PLANTER

SCALE 1" = 1'-0"



STONE VENER WALL

SCALE 1" = 1'-0"



SIGN

SCALE 1" = 1'-0"

- NOTES:
1. SIGN BLANKS: USE ALUMINUM ALLOY 5052-H38 COMPLYING WITH ASTM B 209. USE BLANKS CONFORMING TO THE ALUMINUM ASSOCIATION, INC. R01T.
 2. SIGN SHALL BE 0.08 INCH THICK SHEET.
 3. MOUNT SIGNAGE WITH ALUMINUM, VANDAL PROOF HARDWARE.
 4. ADA PARKING SIGN MUST BE A WHITE RECTANGLE WITH LONGER DIMENSION VERTICAL HAVING A GREEN MESSAGE, AND A BLUE AND WHITE INTERNATIONAL SYMBOL OF ACCESSIBILITY. THE SIGN MAY BE EITHER REFLECTIVE OR NON-REFLECTIVE.
 5. ADD "VAN ACCESSIBLE" SIGNAGE WHERE INDICATED ON PLANS.
 6. ADD "FIRE LANE, NO PARKING" SIGNAGE WHERE INDICATED ON PLANS. SIGNAGE SHALL CONFORM WITH IF 503.3.
 7. SEE SHEET LAYOUT PLAN FOR SIGNAGE TYPES AND LOCATIONS.

Project Title

Truax Gateway

City of Madison, Wisconsin

Issued For: Approval
 Issue Date: 04/06/2011
 SAA Project No. 2434
 MC Project No. -
 Bid Pkg No. B11-025

Revision Date

SAA DESIGN GROUP
 SAA Design Group, Inc.
 717 John Noddes Drive
 Madison, WI 53713
 Ph: 608-233-0900
 Fax: 608-233-7750
 www.saa-madison.com



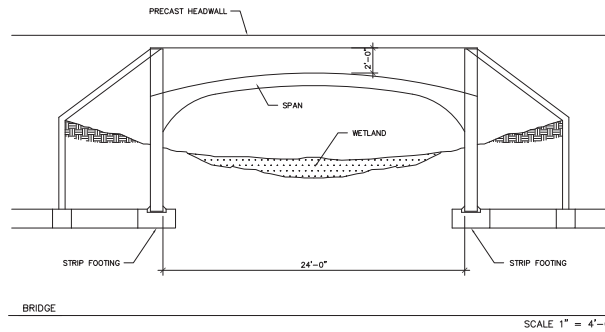
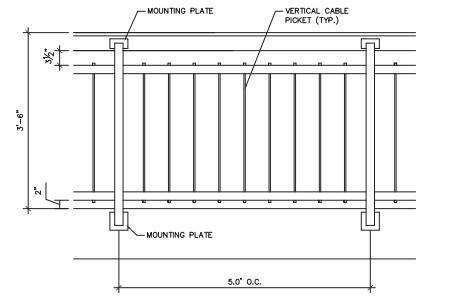
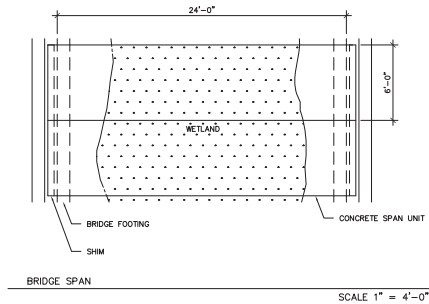
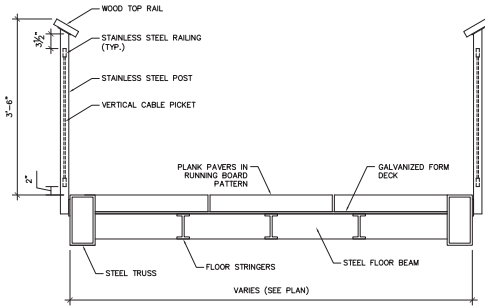
DRAWING

DETAILS



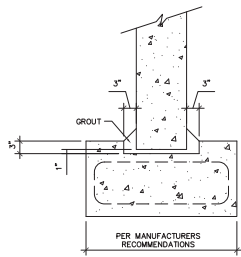
Sheet Number

LP-505

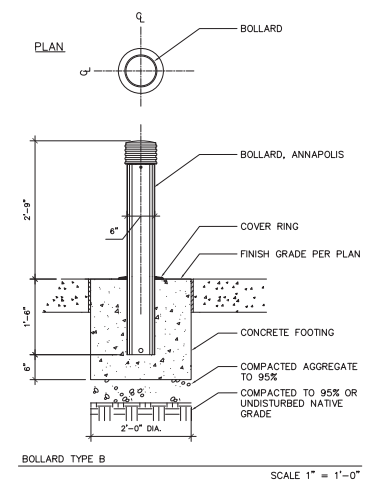
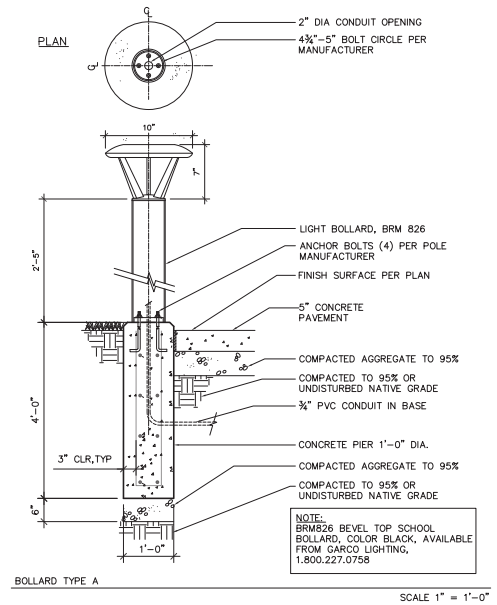
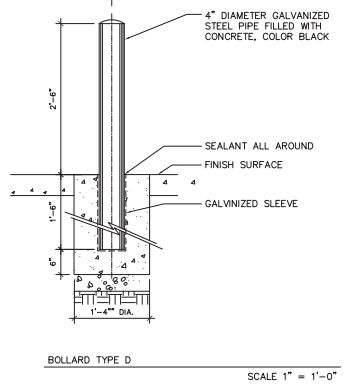
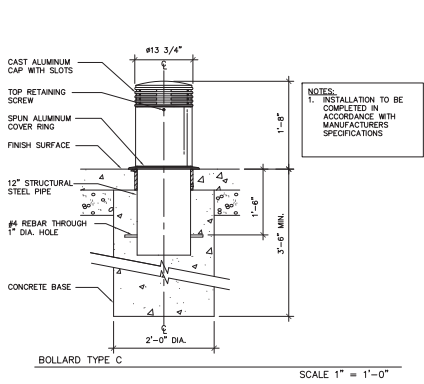
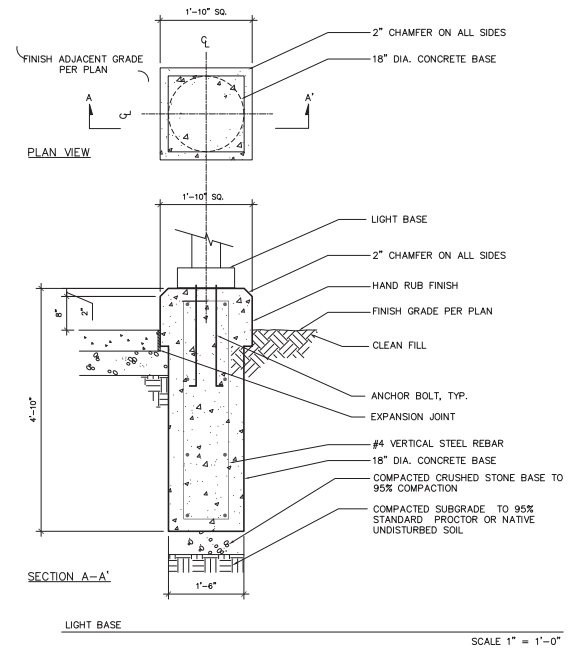
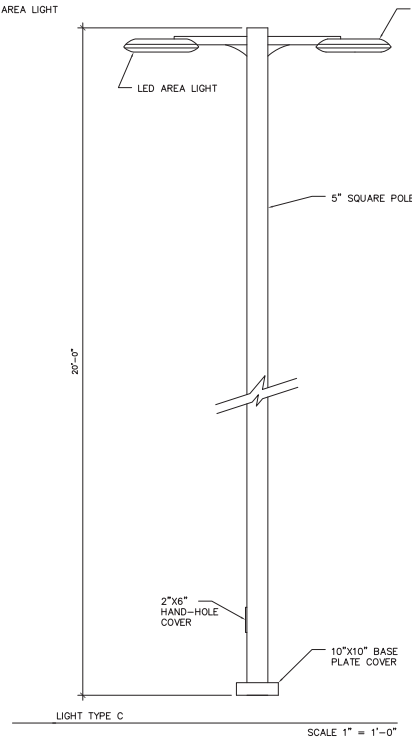
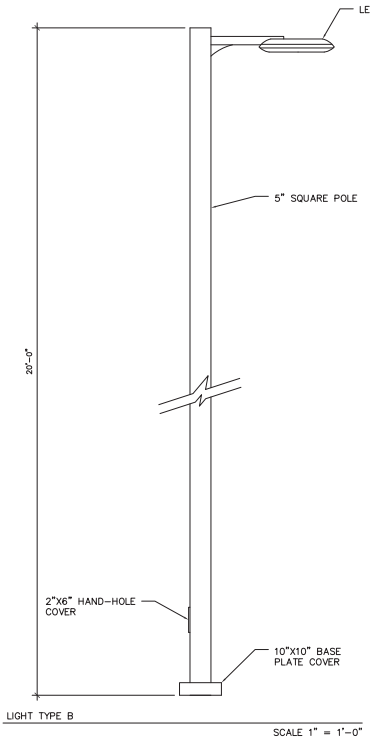
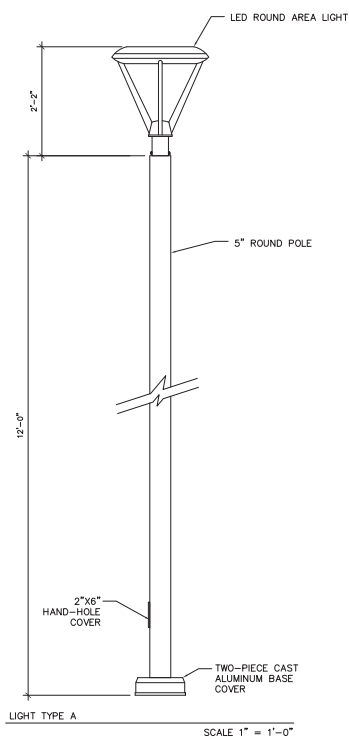


BRIDGE SCALE 1" = 1'-0"

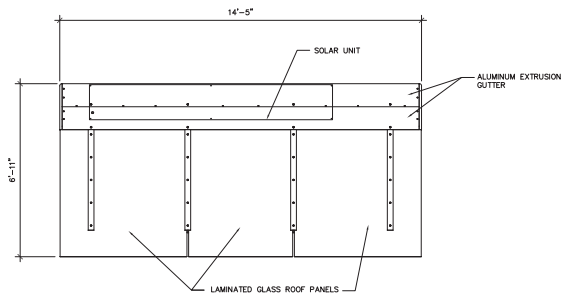
BRIDGE SCALE 1" = 4'-0"



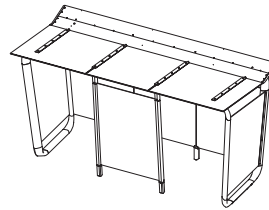
STRIP FOOTING SCALE 1" = 1'-0"



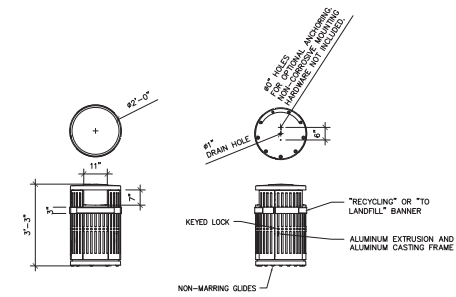
File: P:\31001\2424-MC-C_15_MF\31001\2424-MC-C.dwg Layout: D-4 User: rmlwms Date: 04/05/2011 11:35am



PLAN

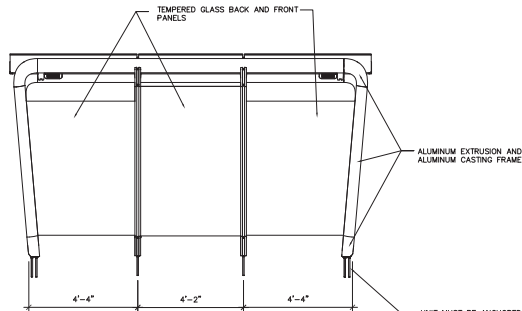


ISOMETRIC

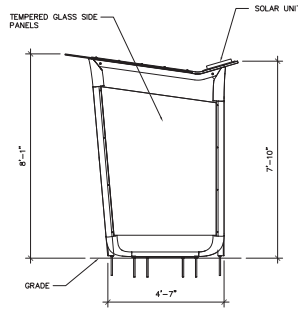


RECYCLING AND LITTER RECEPTACLE

SCALE 1" = 2'-0"



FRONT ELEVATION

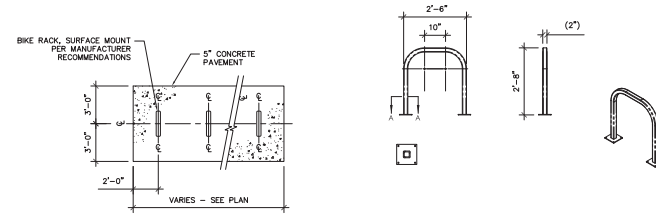


SIDE ELEVATION

UNIT MUST BE ANCHORED.
3/8"-11 THREADED RODS AND
JAM NUTS ARE INCLUDED.

BUS SHELTER

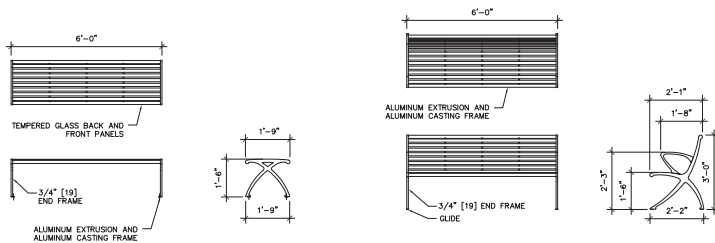
SCALE 1" = 2'-0"



PLAN

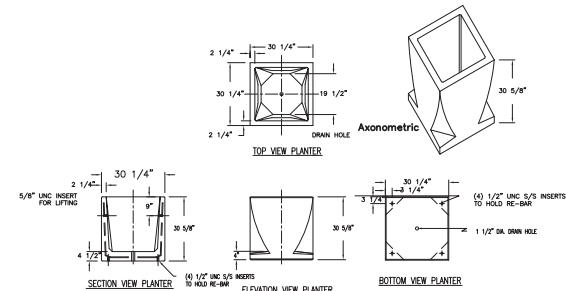
BICYCLE PARKING

SCALE 1" = 2'-0"



BENCHES

SCALE 1" = 2'-0"



SITELINES SL-406

PLANTER

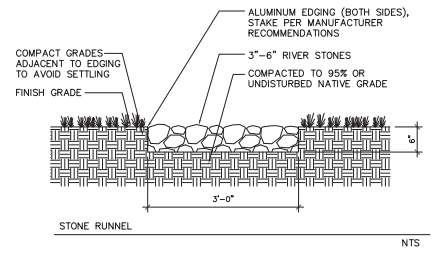
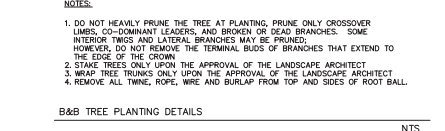
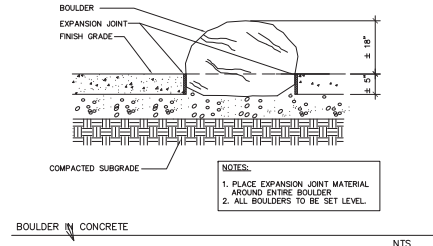
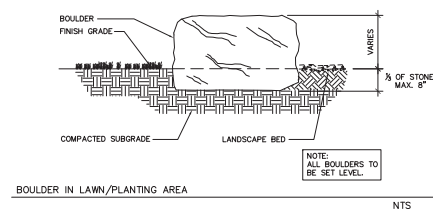
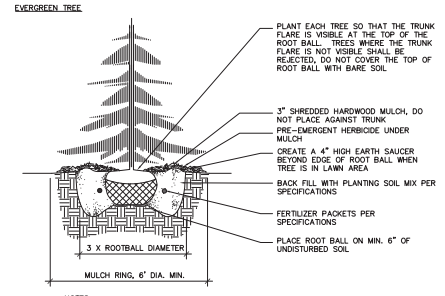
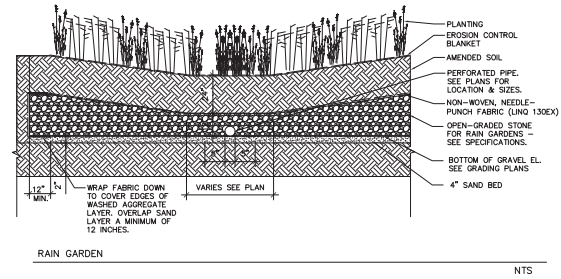
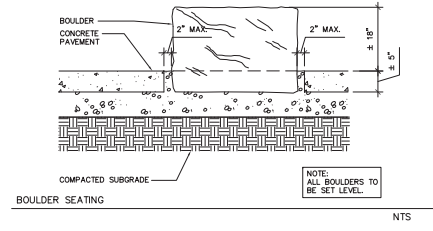
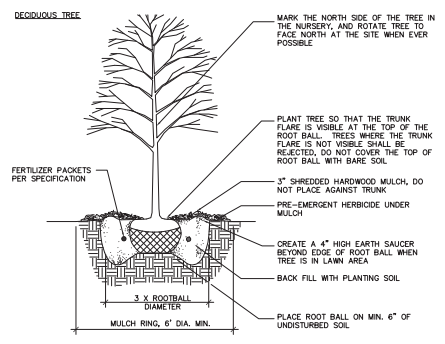
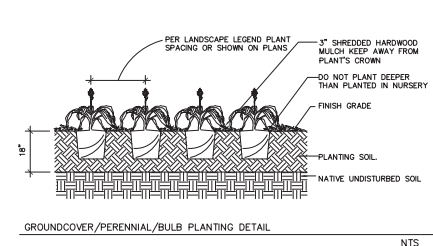
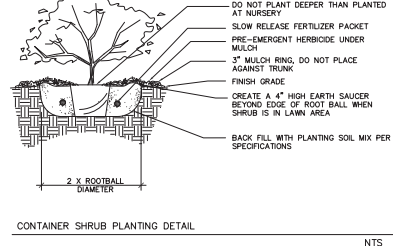
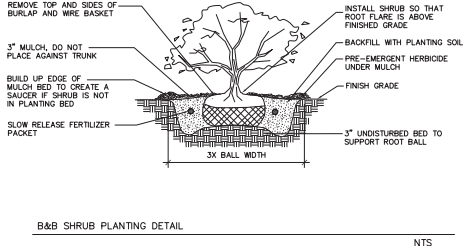
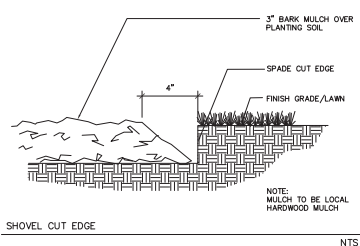
SCALE 1" = 2'-0"

DRAWING

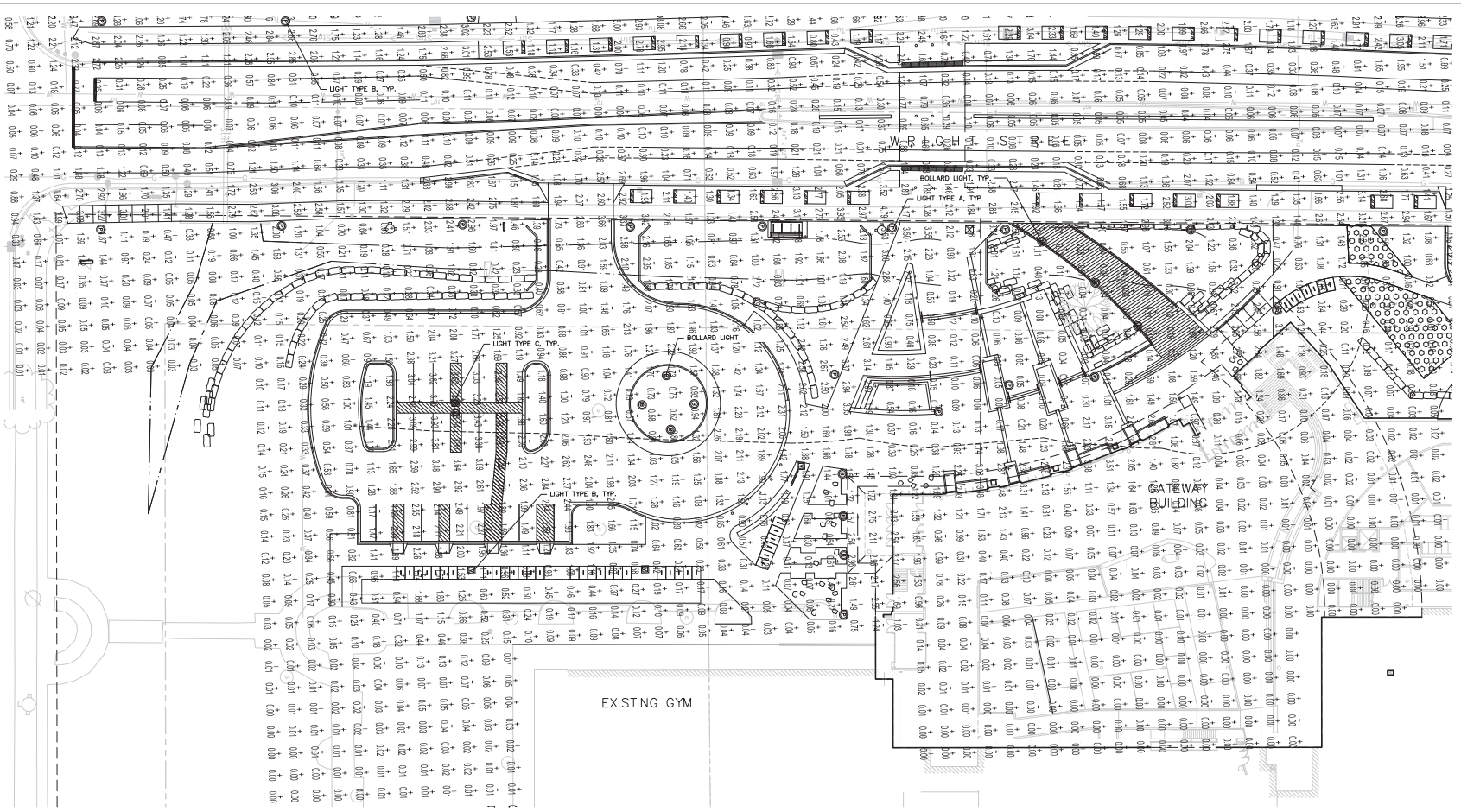
DETAILS



Sheet Number



File: P:\31401\2434-MC-C-LS-MP\04\17-2-18.dwg Layout: D-4 User: mwhitney Printed: Apr 05, 2011 11:37am



LEGEND

BOLLARD LIGHT
 LIGHTED BOLLARD PER SPEC.

LIGHT TYPE A
 PEDESTRIAN SCALE LIGHT PER SPEC.

LIGHT TYPE B
 ROADWAY SCALE LIGHT PER SPEC.

LIGHT TYPE C
 DOUBLE ROADWAY SCALE LIGHT PER SPEC.

DWG file created by LHM/TS 2/29/09 on 4/4/2011 8:29:20 AM

CALCULATION SUMMARY

AREA NAME	DIMENSIONS	GRID / TYPE	# FT/SPAC	GROUP	AVE	MIN	MAX	AVE/MIN	
ReDevelopment	1522.83x1236.81FT	Grade / H-H	4809	10.00	<<>	0.81	13.72	0.00	N/A

MATC LUMINAIRE SCHEDULE

TYPE	SYMBOL DESCRIPTION	LAMP	LIMENS	LF/ FT	QTY
BOLLARD	ⓐ BOLLARD, A DIM MAY-020-24-11-02-C-UL or MAY-210-11-02-C-UL (350mA)	(18)	-1		0.90
A	ⓑ BOLLARD, A DIM (1) 120V MAY-020-24-11-02-C-UL (350mA) 200FTS	(80)	-1		0.90
B	ⓒ BOLLARD, A DIM (1) 120V MAY-020-24-11-02-C-UL (350mA) 200FTS	(20)	-1		0.90
C	ⓓ BOLLARD, A DIM (1) 120V MAY-020-24-11-02-C-UL (350mA) 200FTS	(40)	-1		0.90

AREA SUMMARY SCHEDULE

AREA NAME	NO	DIMENSIONS	LUMS / CASMS	WALTS / SQ FT	QTY
ReDevelopment	001	1522.83x1236.81FT	4809	250	1



LEGEND (PROPOSED)

---	PROPERTY LINE
---	STORM SEWER
---	WATERS EDGE AT TIME OF SURVEY
---	WETLAND DELINEATION
---	CONCRETE CURB & GUTTER
---	ASPHALT PAVEMENT
---	SIDEWALK PAVEMENT

GENERAL NOTES

- REFER TO THE EXISTING CONDITIONS SURVEY DATED XXXX FOR EXISTING CONDITIONS NOTES AND LEGENDS. FIELD WORK FOR THE EXISTING CONDITIONS SURVEY PERFORMED BY JSD PROFESSIONAL SERVICES, INC. IN 2001, DECEMBER, 2010 AND JANUARY 2011.
- ALL WORK IN THE ROW AND ALL PUBLIC IMPROVEMENTS SHALL BE IN ACCORDANCE WITH THE CITY OF MADISON STANDARD SPECIFICATIONS FOR PUBLIC WORKS CONSTRUCTION.
- EXISTING GRADE SPOT ELEVATIONS SHOWN FOR INFORMATIONAL PURPOSES. DURING CONSTRUCTION MATCH EXISTING GRADES AT CONSTRUCTION LIMITS.
- NO SITE GRADING OUTSIDE OF THE CONSTRUCTION LIMIT LINE.
- THIS PROJECT HAS BEEN DESIGNED AND WILL BE CONSTRUCTED IN COMPLIANCE WITH ALL OF THE WDMR INDIVIDUAL PERMIT APPLICATION ELIGIBILITY STANDARDS.
- JSD SHALL BE HELD HARMLESS AND DOES NOT WARRANT ANY DEVIATIONS BY THE OWNER/CONTRACTOR FROM THE APPROVED CONSTRUCTION PLANS THAT MAY RESULT IN DISCIPLINARY ACTIONS BY ANY OR ALL REGULATORY AGENCIES.
- DRAWING FOR REVIEW - NOT FOR CONSTRUCTION UNLESS OTHERWISE NOTED IN THE TITLE BLOCK.
- REFER TO GEOTECHNICAL REPORT DATED JANUARY 18, 2011 AS PREPARED BY CGC, INC FOR SITE SOILS INFORMATION.

SITE PLAN NOTES

- ALL DIMENSIONS TO FACE OF CURB UNLESS OTHERWISE NOTED.
- ALL RADII TO FACE OF CURB UNLESS OTHERWISE NOTED.
- ALL CURB AND GUTTER IS 18" CURB AND GUTTER UNLESS OTHERWISE NOTED.
- USE 4" WIDE, HIGH VISIBILITY WHITE PAINT FOR STALL LINES PER MATC STANDARDS.
- MARK AND STRIPE ADA PARKING SPACES APPROPRIATELY.
- ALL MARKINGS TO BE YELLOW OR WHITE PAINT PER MATC STANDARDS. HANDICAP SYMBOL TO BE BLUE PAINT.
- CONTRACTOR SHALL PROVIDE CONTROL JOINTS AND CONSTRUCTION JOINTS OF ONE-QUARTER CONCRETE THICKNESS IN SLAB ON GRADE AND SIDEWALKS AS FOLLOWS:
SLAB ON GRADE - MAXIMUM 10' ON CENTER
SIDEWALKS - MAXIMUM 8' ON CENTER
*UNLESS OTHERWISE NOTED ON THE SITE PLAN.
- CONTRACTOR SHALL PROVIDE EXPANSION JOINTS IN SLAB ON GRADE AND SIDEWALKS AS FOLLOWS:
SLAB ON GRADE - MAXIMUM 40' ON CENTER
SIDEWALKS - MAXIMUM 24' ON CENTER
*UNLESS OTHERWISE NOTED ON THE SITE PLAN.
- 6" MINIMUM DEPTH CONCRETE SLAB ON GRADE WITH #3 REBAR.
- 30" HIGH, 6" DIAMETER CONCRETE BOLLARD PER MATC STANDARDS.
- 2' x 4' TRUNCATED DOME SECTIONS.

SITE PLAN NOTES CONTINUED

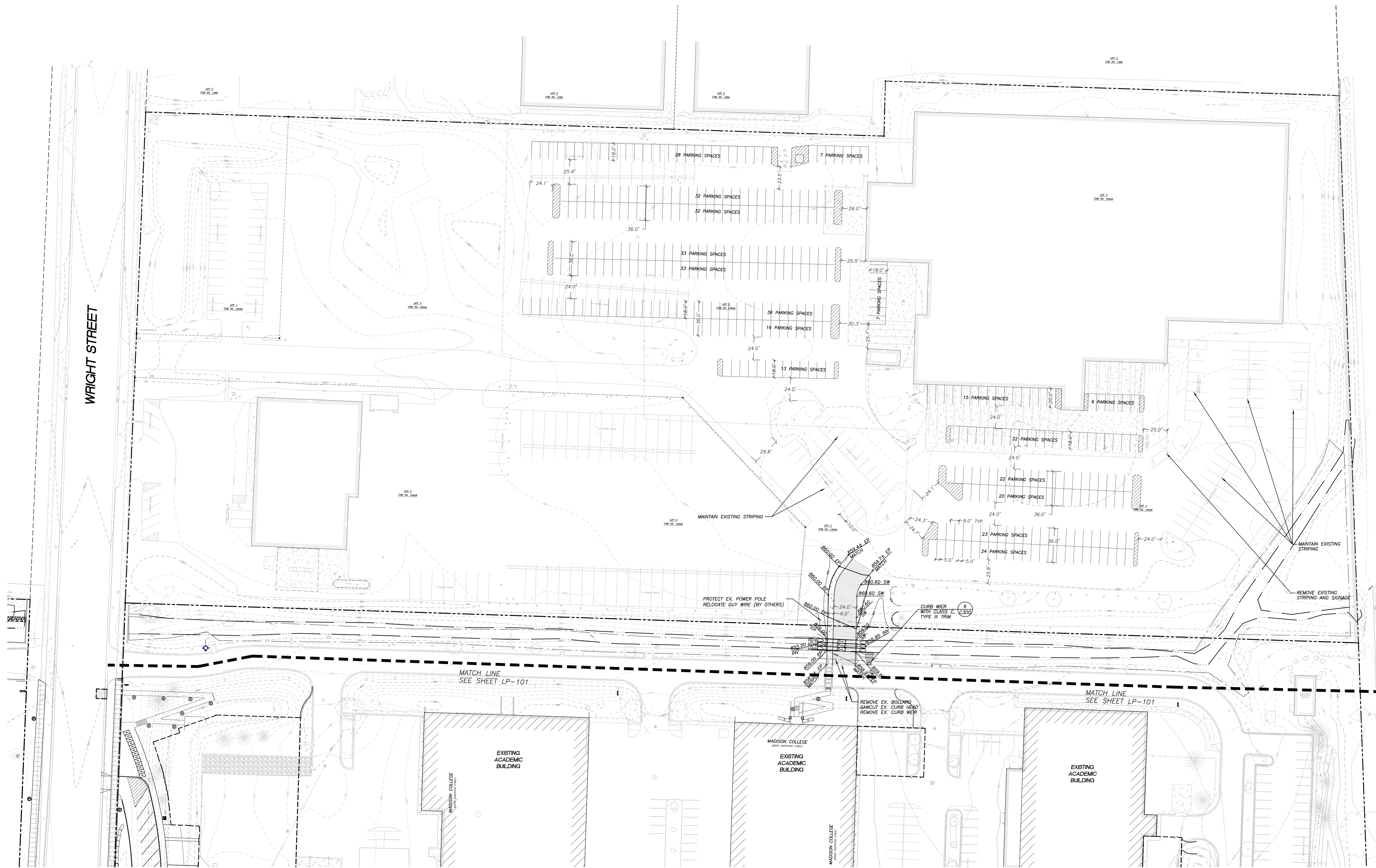
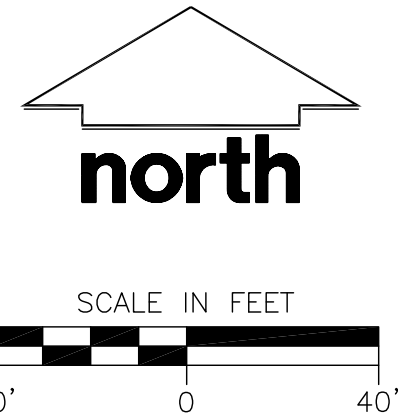
- SIGNS TO MEET MANUAL ON UNIFORM TRAFFIC CONTROL AS TO COLOR, LETTERING AND DIMENSIONS AND SHALL BE INSTALLED AT A HEIGHT OF SEVEN FEET.
- PARKING LOT LIGHTING SHALL BE FULLY-SHIELDED LIGHT EMITTING DIODE (LED) LIGHT. SEE SITE ELECTRICAL PLANS.
- CONCRETE PAVEMENT SHALL HAVE A "WINDOW" FINISH.
- VEHICLE BARRICADES; 8" ROUND STEEL PIPE FILLED WITH CONCRETE 36" ABOVE FINISHED SURFACE AND 3 FEET BELOW GRADE. PROVIDE BOLLARD COVER Dfp1438 BY STONEWEAR FORCE PROTECTION.

UTILITY NOTES

- DIMENSIONS TAKE PRECEDENCE OVER SCALE. CONTRACTOR TO VERIFY ALL DIMENSIONS IN FIELD.
- IF ANY ERRORS, DISCREPANCIES, OR OMISSIONS WITHIN THE PLAN BECOME APPARENT, IT SHALL BE BROUGHT TO THE ATTENTION OF THE ENGINEER PRIOR TO CONSTRUCTION SO THAT CLARIFICATION OR REVISION MAY OCCUR.
- LENGTHS OF ALL UTILITIES ARE TO CENTER OF STRUCTURES OR FITTINGS AND MAY VARY SLIGHTLY FROM PLAN. LENGTHS SHALL BE VERIFIED IN THE FIELD DURING CONSTRUCTION.
- SANITARY SEWER MAIN IS PUBLICLY OWNED. DESIGN OF THE MAIN IS PROVIDED BY THE CITY OF MADISON PER PROJECT NO. XXXX. INSTALLATION NOT IN CONTRACT.
- ALL CONSTRUCTION SIGNING TO BE IN ACCORDANCE WITH THE CITY OF MADISON AND WISCONSIN DEPARTMENT OF TRANSPORTATION REQUIREMENTS.
- THE CONTRACTOR SHALL INSTALL A PEDESTRIAN FENCE AROUND ALL EXCAVATIONS TO BE LEFT OPEN OVER NIGHT AS REQUIRED.
- THE PROPOSED IMPROVEMENTS MUST BE CONSTRUCTED IN ACCORDANCE WITH ENGINEERING PLANS DESIGNED TO MEET ORDINANCES AND REQUIREMENTS OF THE MUNICIPALITY AND WISDOT, WDCOMM, AND WDMR.
- PRIOR TO CONSTRUCTION, THE CONTRACTOR IS RESPONSIBLE FOR:
* EXAMINING ALL SITE CONDITIONS RELATIVE TO THE CONDITIONS INDICATED ON THE ENGINEERING DRAWINGS. ANY DISCREPANCIES ARE TO BE REPORTED TO THE ENGINEER AND RESOLVED PRIOR TO THE START OF CONSTRUCTION.
* OBTAINING ALL PERMITS INCLUDING PERMIT COSTS, TAP FEES, METER DEPOSITS, BONDS, AND ALL OTHER FEES REQUIRED FOR PROPOSED WORK TO OBTAIN OCCUPANCY.
* VERIFYING UTILITY ELEVATIONS AND NOTIFYING ENGINEER OF ANY DISCREPANCY. NO WORK SHALL BE PERFORMED UNTIL THE DISCREPANCY IS RESOLVED.
* NOTIFYING ALL UTILITIES PRIOR TO THE INSTALLATION OF ANY UNDERGROUND IMPROVEMENTS.
* NOTIFYING THE DESIGN ENGINEER AND MUNICIPALITY 48 HOURS PRIOR TO THE START OF CONSTRUCTION TO ARRANGE FOR APPROPRIATE CONSTRUCTION OBSERVATION.
- THE CONTRACTOR IS RESPONSIBLE FOR PROVIDING THE ENGINEER WITH AS-BUILT CONDITIONS OF THE DESIGNATED IMPROVEMENTS IN ORDER THAT THE APPROPRIATE DRAWINGS CAN BE PREPARED, IF REQUIRED. ANY CHANGES TO THE DRAWINGS OR ADDITIONAL ITEMS MUST BE REPORTED TO THE ENGINEER AS WORK PROGRESSES.

PROPOSED STORM SEWER PIPE SCHEDULE

PIPE LABEL	FROM	TO	LENGTH (FT)	INVERT ELEVATION (FT)	DISCHARGE ELEVATION (FT)	SLOPE (%)	PIPE SIZE + TYPE
P-1	APRON ENDWALL	APRON ENDWALL	50	855.85	855.20	1.30	49"x33" ELLIPTICAL CMP
P-2	APRON ENDWALL	APRON ENDWALL	50	855.85	855.20	1.30	49"x33" ELLIPTICAL CMP
P-3	APRON ENDWALL	APRON ENDWALL	50	855.85	855.20	1.30	49"x33" ELLIPTICAL CMP



Project Title
Transportation & Advanced Sustainable Manufacturing Center

City of Madison, Wisconsin

Issued For: Approval
 Issue Date: 04/06/2011
 Strang Project No. 2010080
 MC Project No. -
 Bid Pkg No. B11-009

Revision _____ Date _____

STRANG

ARCHITECTURE
 ENGINEERING
 INTERIOR DESIGN

STRANG INC
 6411 MINERAL POINT ROAD
 MADISON, WI 53705-4395
 T/ 608 276 9200
 F/ 608 276 9204

JSD Professional Services, Inc.
 Engineers • Surveyors • Planners

"BUILDING RELATIONSHIPS WITH A COMMITMENT TO CLIENT SATISFACTION THROUGH TRUST, QUALITY AND EXPERIENCE"

- CIVIL ENGINEERING
- SURVEYING & MAPPING
- CONSTRUCTION SERVICES
- WATER RESOURCES
- PLANNING & DEVELOPMENT
- TRANSPORTATION ENGINEERING
- STRUCTURAL ENGINEERING
- LANDSCAPE ARCHITECTURE

MADISON REGIONAL OFFICE
 161 HORIZON DRIVE, SUITE 101
 VERONA, WISCONSIN 53593
 608.848.5060 PHONE | 608.848.2255 FAX
 MADISON | MILWAUKEE
 KENOSHA | APPLETON
 www.jsdinc.com

**CITY OF MADISON
 MAJOR ALTERATION
 TO EXISTING
 CONDITIONAL USE**
 04-06-11

DRAWING
**NORTH PARKING
 LOT PLAN**

Sheet Number
C-102

File: A:\2010\104154\dwg\10-4154_Civil_Design_North_LP.dwg Layout: C102 User: dos Plotted: Apr 15, 2011 8:37am