



DATE: 4-30-09

SCALE: 1" = 40'

FN: 09-04-114

BLOCK PLAN

# HABITAT RESTORE WAREHOUSE

Located in the SW1/4 of the NW1/4 of Section 9, T7N, R10E,  
City of Madison, Dane County, Wisconsin

D'ONOFRIO KOTTKE AND ASSOCIATES, INC.

7530 Westwood Way • Madison, WI 53717  
Phone: 608.833.7530 • Fax: 608.833.1089

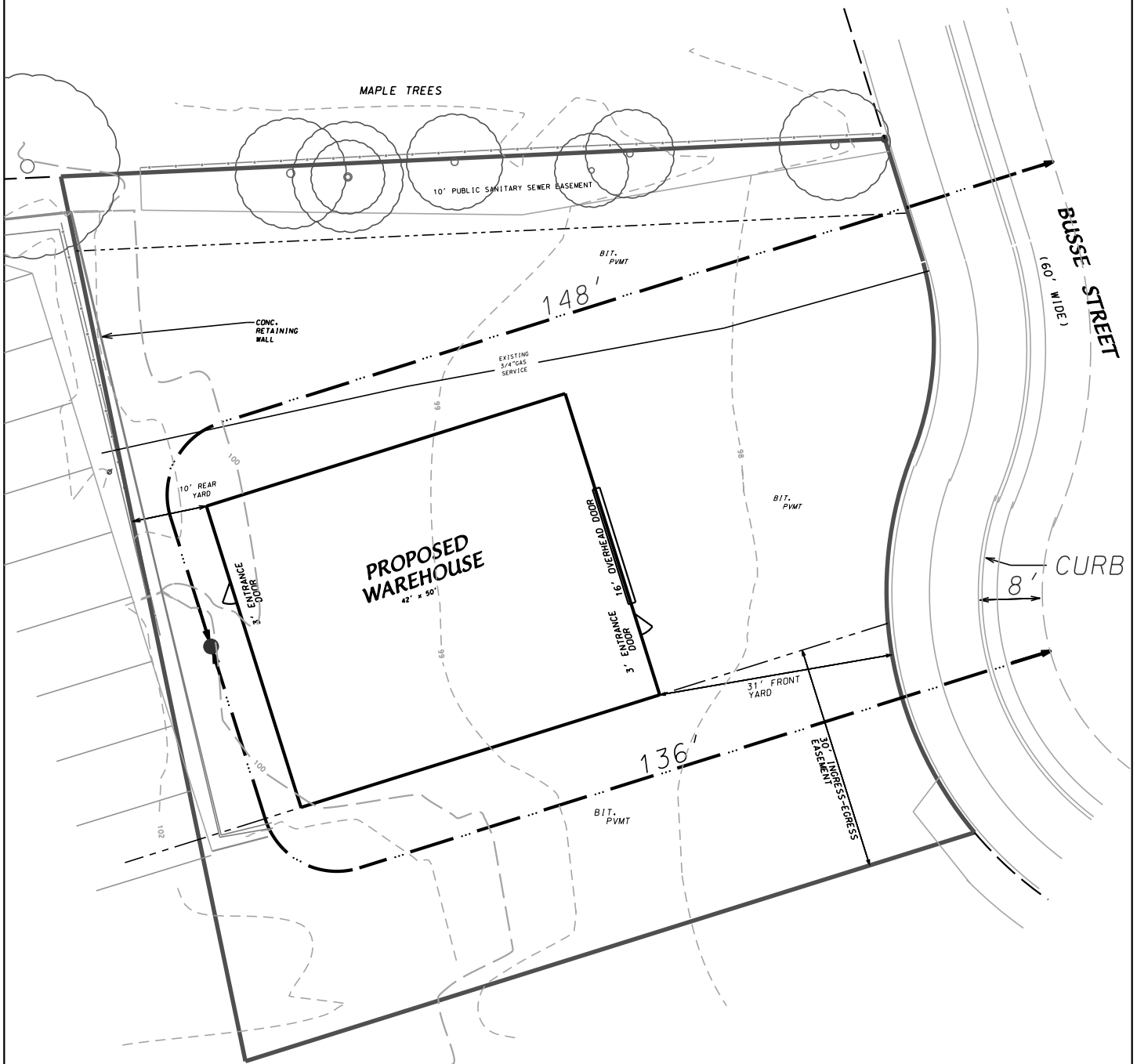
YOUR NATURAL RESOURCE FOR LAND DEVELOPMENT



### LEGEND

- FOUND IRON STAKE
- PLACED IRON STAKE
- NO. of Parking Spaces
- Handicap Parking Space
- POWER POLE
- MANHOLE
- CATCH BASIN-INLET
- TELEPHONE PEDESTAL
- LIGHT POLE
- HYDRANT
- VALVE
- SIGN
- CONC. CURB
- BUMPER CURB
- FENCE
- CONCRETE/BRICK WALL

# DETAIL FOR FIRE DEPARTMENT ACCESS



**D'ONOFRIO KOTTKE AND ASSOCIATES, INC.**

7530 Westward Way, Madison, WI 53717  
 Phone: 608.833.7530 • Fax: 608.833.1089

**YOUR NATURAL RESOURCE FOR LAND DEVELOPMENT**



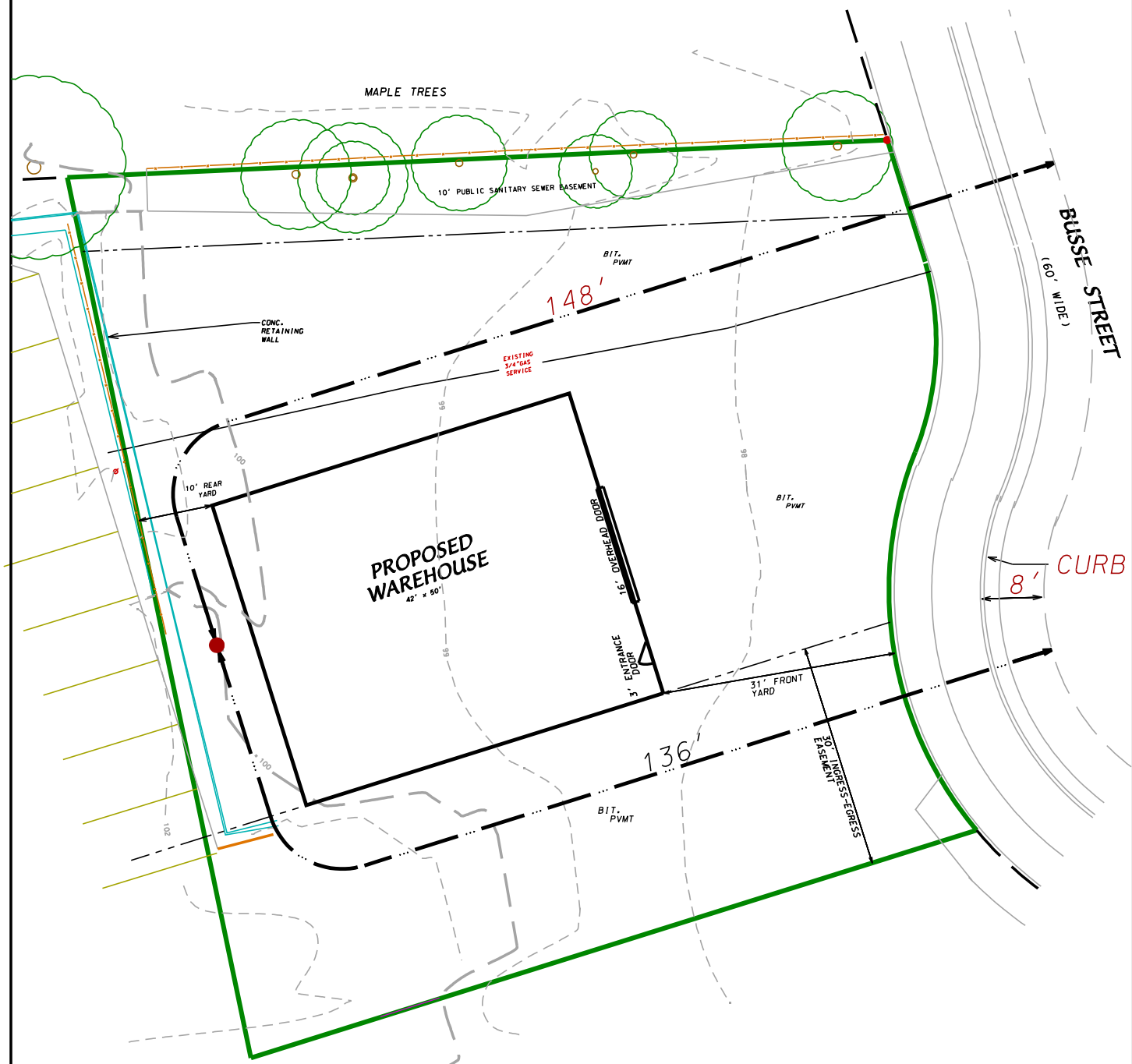
Scale 1" = 100'

DATE: 4-30-09  
 F.N.: 09-04-114  
 REV.

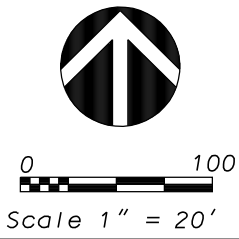
DRAWN BY: JEL

U:/USER/0904114/0904114.DGN

# DETAIL FOR FIRE DEPARTMENT ACCESS



**D'ONOFRIO KOTTKE AND ASSOCIATES, INC.**  
 7530 Westward Way, Madison, WI 53717  
 Phone: 608.833.7530 • Fax: 608.833.1089  
 YOUR NATURAL RESOURCE FOR LAND DEVELOPMENT

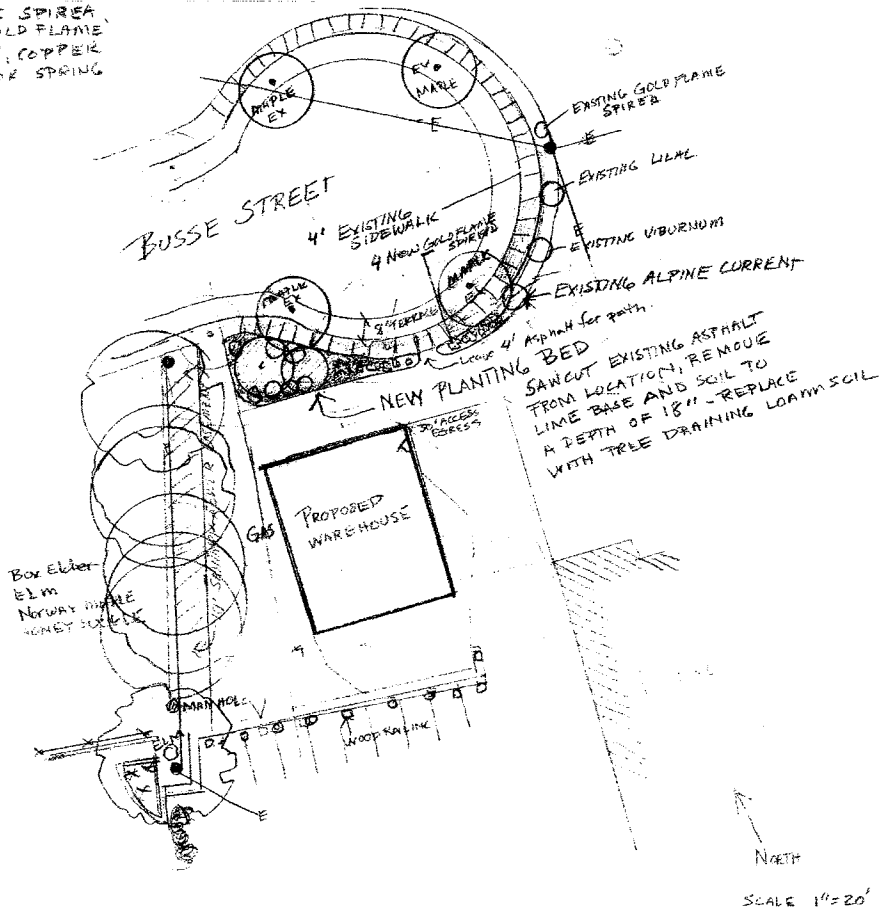
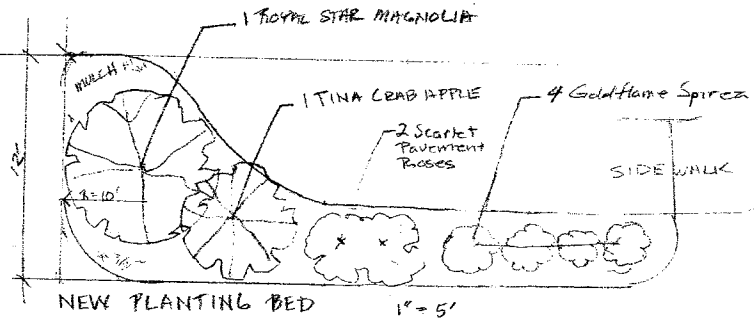


DATE: 4-30-09  
 F.N.: 09-04-114  
 REV.

DRAWN BY: JEL  
 U:/USER/JOHN/0904114.DGN

PLANT LIST

- 1 ROYAL STAR MAGNOLIA  
MAGNOLIA 'ROYAL STAR'  
15' X 10-15' W, UPRIGHT  
FRAGRANT WHITE FLOWERS  
YELLOW BRONZE FALL COLOR
- 1 TINA CRABAPPLE  
MALUS SARGENTII 'TINA'  
6-8' X 8-10'  
YELLOW FALL COLOR  
SMALL RED FRUIT  
DISEASE RESISTANT
- 2 SCARLET PAVEMENT ROSES  
ROSA RUGOSA HYBRID  
2-2 1/2' X 2-3'  
HARDY TOUGH, GOLD FALL  
COLOR, DARK RED HIP  
FRAGRANT RED FLOWERS
- 8 GOLD FLAME SPIREA  
SPIRAEA 'GOLD FLAME'  
2-3' X 2-4', COPPER  
ORANGE COLOR SPRING  
AND FALL



PLANTING PLAN  
HABITAT RESTORE  
WAREHOUSE

SHOOTING STAR  
LANDSCAPE ARCHITECTURE LLC  
PELGY CHUNG  
MAY 1 2009



**LEGEND**

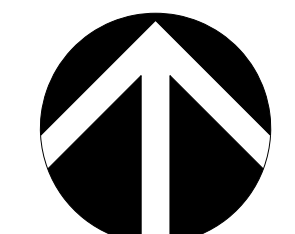
●	FOUND IRON STAKE
○	PLACED IRON STAKE
⬡	NO. of Parking Spaces
♿	Handicap Parking Space
⊙	POWER POLE
○	MANHOLE
⊗	CATCH BASIN-INLET
⊠	TELEPHONE PEDESTAL
⊛	LIGHT POLE
⊙	HYDRANT
○	VALVE
▽	SIGN
====	CONC. CURB
— — — —	BUMPER CURB
— x — x —	FENCE
— — — —	DIRECTION OF DRAINAGE

**D'ONOFRIO KOTTHE AND ASSOCIATES, INC.**  
 7530 Westward Way, Madison, WI 53717  
 Phone: 608.833.7530 • Fax: 608.833.1089  
**YOUR NATURAL RESOURCE FOR LAND DEVELOPMENT**

**SITE PLAN**

**HABITAT RESTORE WAREHOUSE**

Located in lte SW 1/3 of the NW 1/4 of Section 9, T7N, R10E  
 City of Madison, Dane County, Wisconsin



SCALE: 1" = 10'

DATE: 04-30-09  
 REVISED:  
 x

DRAWN BY: JEL

FN: 09-04-114  
 Sheet Number:  
 1 of 1