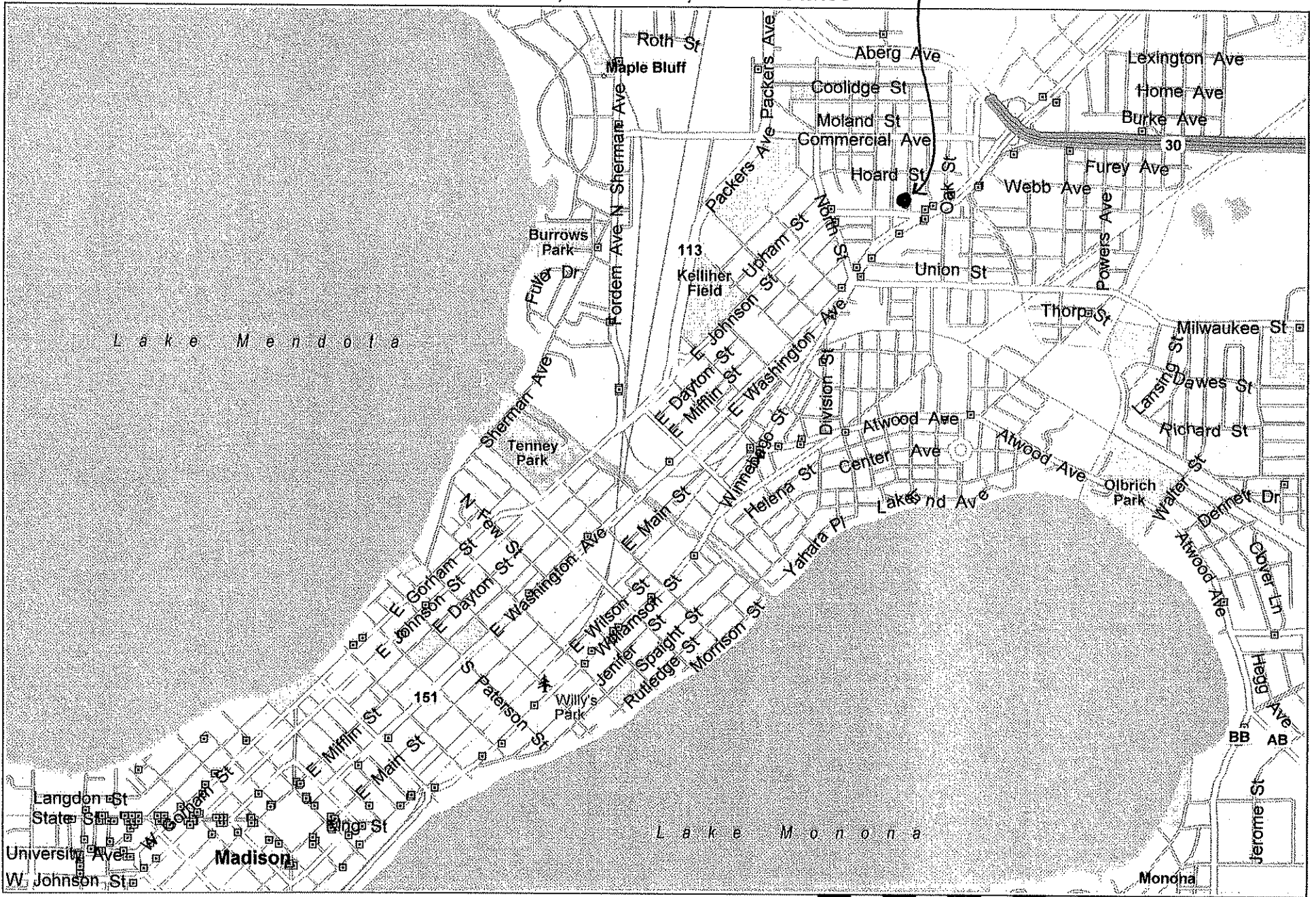


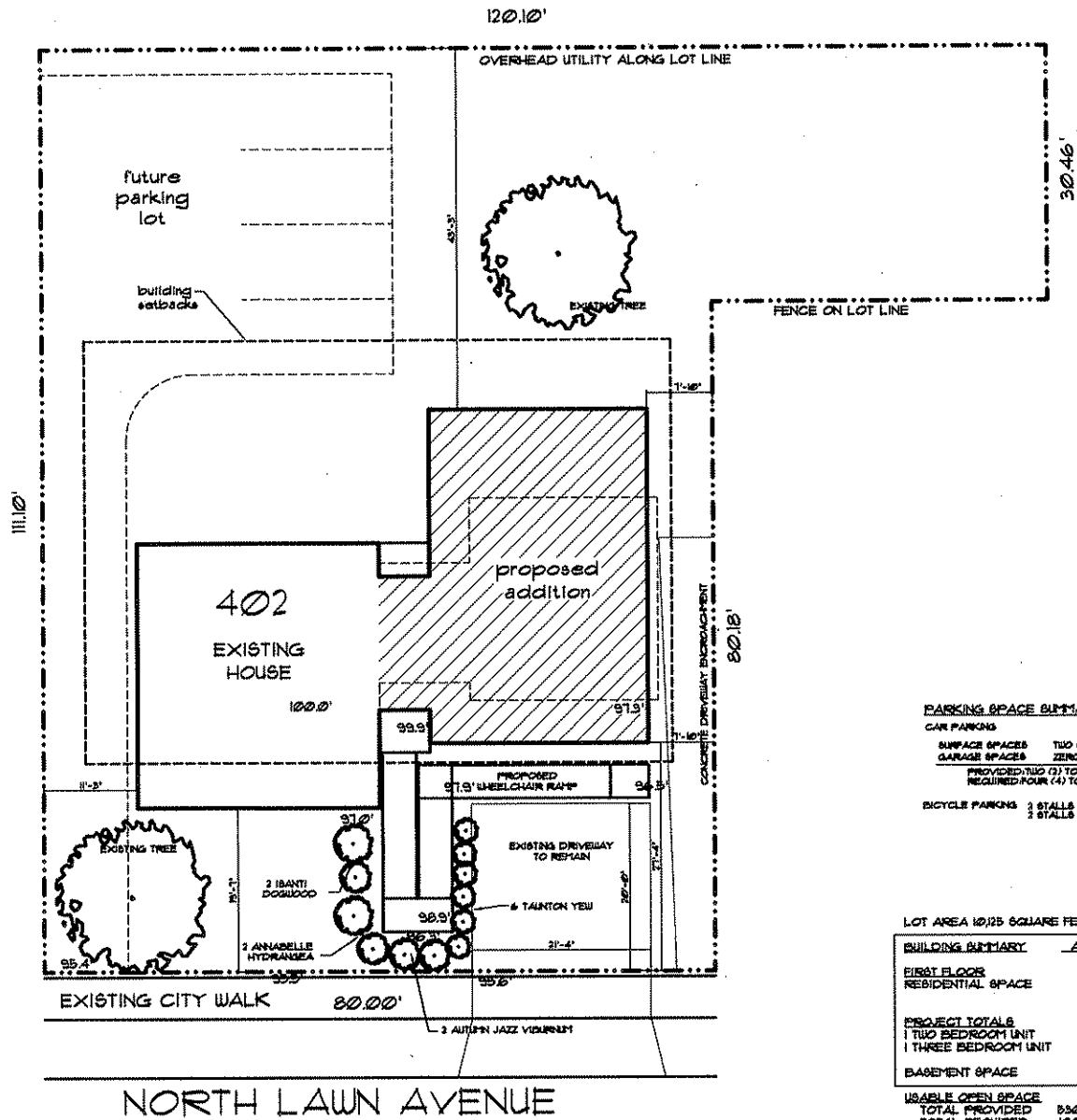
Madison, Wisconsin, United States

PROJECT LOCATION



Copyright © 1988-2005 Microsoft Corp. and/or its suppliers. All rights reserved. <http://www.microsoft.com/streets/>
 © 2004 NAVTEQ. All rights reserved. This data includes information taken with permission from Canadian authorities © Her Majesty the Queen in Right of Canada. © Copyright 2004 by TeleAtlas North America, Inc. All rights reserved.

402 NORTH LAWN AVENUE



PARKING SPACE SUMMARY

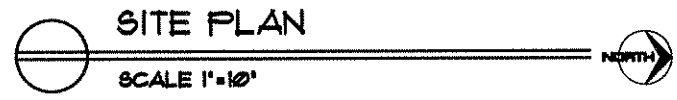
CAR PARKING	
SURFACE SPACES	TWO (2)
GARAGE SPACES	ZERO (0)
PROVIDED TWO (2) TOTAL	
REQUIRED FOUR (4) TOTAL	
BICYCLE PARKING	
2 STALLS PROVIDED (IN BASEMENT)	
2 STALLS REQUIRED	

LOT AREA 10,125 SQUARE FEET (0.23 ACRES)

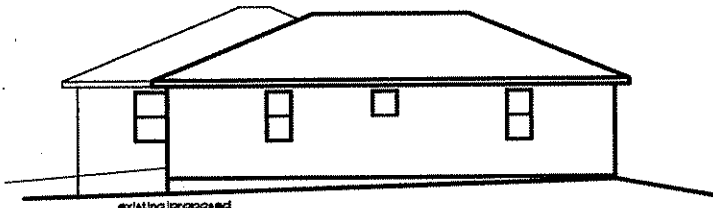
BUILDING PARTIALTY	ALL ARE GROSS AREA
FIRST FLOOR	
RESIDENTIAL SPACE	2055 SQ. FT.
PROJECT TOTALS	2 RESIDENTIAL UNITS
1 TWO BEDROOM UNIT	2055 SQ. FT.
1 THREE BEDROOM UNIT	
BASEMENT SPACE	920 SQ. FT.

USABLE OPEN SPACE	
TOTAL PROVIDED	5300 SQ. FT.
TOTAL REQUIRED	10000 SQ. FT. (2 X 5000)

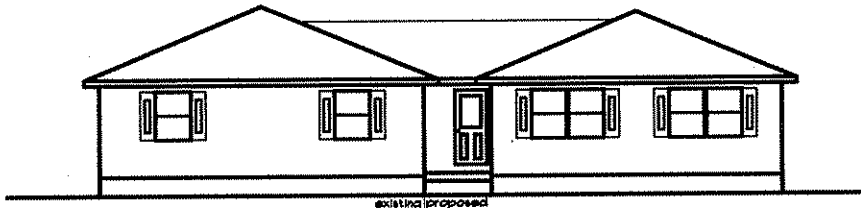
UTILITIES ARE EXISTING



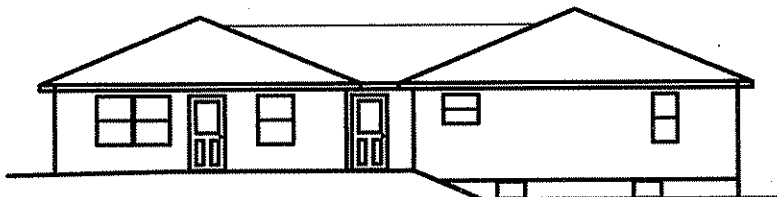
glueck architects
 116 North First Street, Madison, WI 53702 (608)251-2511
 MOVIN' OUT, INC.
 PROPOSED TUDOR UNIT
 402 NORTH LAWN AVENUE
 MADISON, WISCONSIN
 02-25
 9
 2



RIGHT SIDE ELEVATION
SCALE 1/4" = 1'-0"



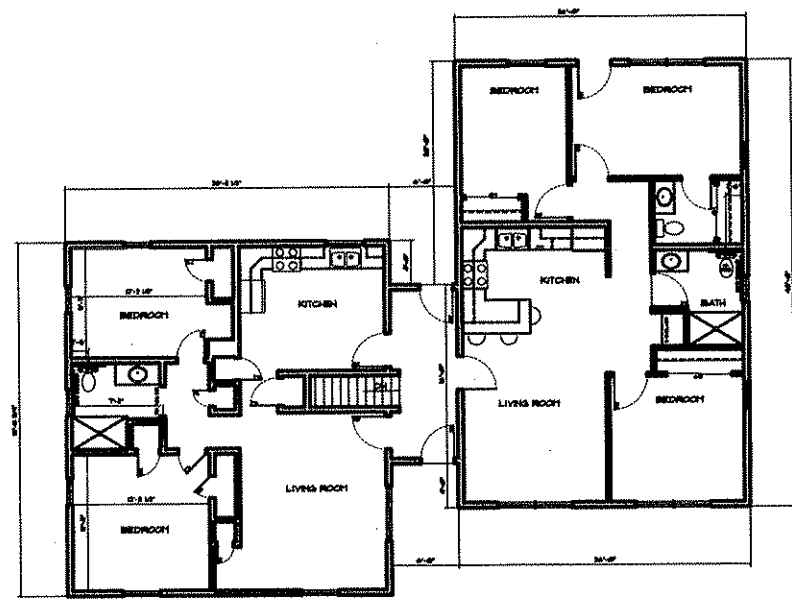
FRONT (STREET) ELEVATION
SCALE 1/4" = 1'-0"



REAR ELEVATION
SCALE 1/4" = 1'-0"



LEFT SIDE ELEVATION
SCALE 1/4" = 1'-0"



PROPOSED FLOOR PLAN
SCALE 1/4" = 1'-0"