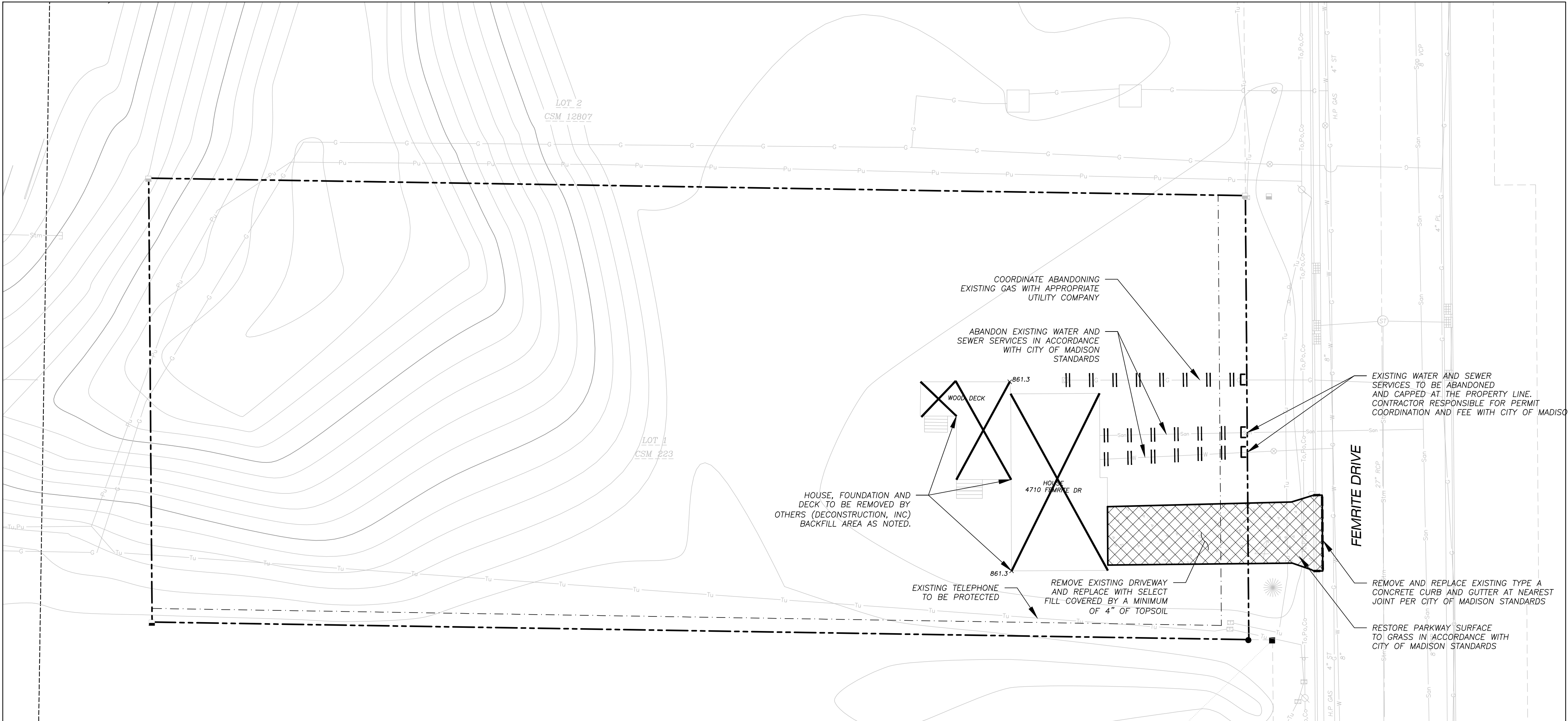


File: I:\2009\063260\dwg\08-3260 - DEMO 2013.dwg Layout: DEMO-4710 User: smckinley Plotted: May 17, 2013 - 9:05am Xref's:

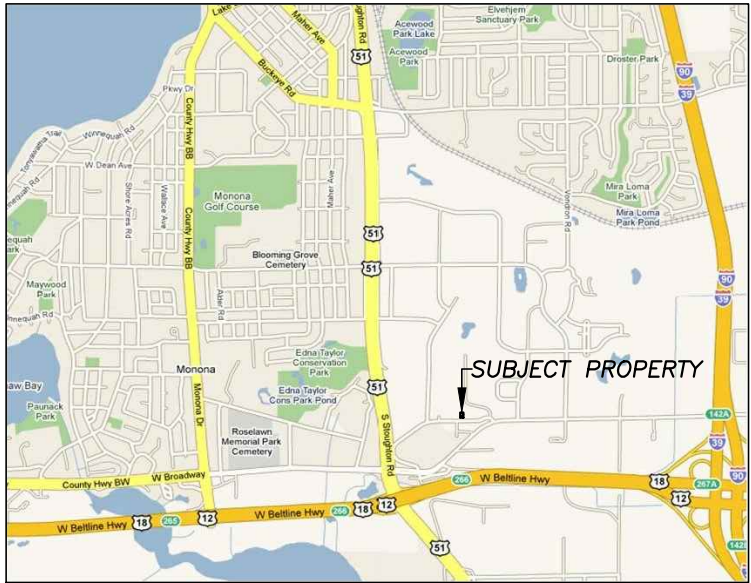


GENERAL NOTES

1. REFER TO THE EXISTING CONDITIONS SURVEY FOR EXISTING CONDITIONS NOTES AND LEGENDS. FIELD WORK FOR THE EXISTING CONDITIONS SURVEY PERFORMED BY JSD PROFESSIONAL SERVICES, INC. THE WEEK OF FEBRUARY 8TH, 2013.
2. ALL WORK IN THE ROW AND ALL PUBLIC IMPROVEMENTS SHALL BE IN ACCORDANCE WITH THE CITY OF MADISON STANDARD SPECIFICATIONS FOR PUBLIC WORKS CONSTRUCTION.
3. ALL DAMAGE TO THE PAVEMENT, SIDEWALK, AND CURB AND GUTTER ON FEMRITE DRIVE ADJACENT TO THIS SPACE SHALL BE REPLACED AND RESTORED IN ACCORDANCE WITH THE CITY'S PAVEMENT PATCHING CRITERIA.
4. EXISTING GRADE SPOT ELEVATIONS SHOWN FOR INFORMATIONAL PURPOSES. DURING CONSTRUCTION MATCH EXISTING GRADES AT CONSTRUCTION LIMITS.
5. NO SITE GRADING OUTSIDE OF THE PROPERTY UNLESS SPECIFIED.
6. JSD SHALL BE HELD HARMLESS AND DOES NOT WARRANT ANY DEVIATIONS BY THE OWNER/CONTRACTOR FROM THE APPROVED CONSTRUCTION PLANS THAT MAY RESULT IN DISCIPLINARY ACTIONS BY ANY OR ALL REGULATORY AGENCIES.
7. DRAWING FOR REVIEW - NOT FOR CONSTRUCTION UNLESS OTHERWISE NOTED IN THE TITLE BLOCK.
8. THE CONTRACTOR IS RESPONSIBLE FOR CONTACTING DIGGERS HOTLINE FOR UTILITY LOCATIONS AND FOR PROTECTING EXISTING UTILITIES.

DEMOLITION NOTES

1. THE DEMOLITION PLAN SHOULD NOT BE CONSIDERED ALL-INCLUSIVE. CONTRACTOR IS RESPONSIBLE FOR ALL NECESSARY DEMOLITION TO COMPLETE THE PROPOSED IMPROVEMENTS.
2. PRIOR TO BUILDING DEMOLITION, THE MADISON WATER UTILITY SHALL BE CONTACTED TO REMOVE THE WATER METER.
3. REMOVE ALL STRUCTURES WITHIN THE PROJECT AREA. REMOVAL TO BE IN ACCORDANCE WITH ALL APPLICABLE PERMITS AND DEMOLITION STANDARDS. (BY OTHERS, DECONSTRUCTION, INC)
4. CONTRACTOR SHALL KEEP ALL STREETS FREE AND CLEAR OF ALL CONSTRUCTION RELATED DIRT, DUST AND DEBRIS.
5. ABANDONED/REMOVED ITEMS SHALL BE DISPOSED OF OFF SITE UNLESS OTHERWISE NOTED.
6. SEWER ABANDONMENT SHALL BE IN ACCORDANCE WITH ARTICLE 503 AND WATER ABANDONMENT SHALL BE IN ACCORDANCE WITH ARTICLE 704.12 OF THE CITY OF MADISON STANDARD SPECIFICATIONS FOR PUBLIC WORKS CONSTRUCTION, LATEST ADDITION.
7. CONTRACTOR TO COORDINATE PRIVATE UTILITY REMOVAL / ABANDONMENT AND NECESSARY RELOCATION WITH RESPECTIVE UTILITY COMPANY. COORDINATION REQUIRED PRIOR TO CONSTRUCTION.
8. CONTRACTOR TO REPLACE ALL SIDEWALK AND CURB AND GUTTER ABUTTING THE PROPERTIES, WHICH IS DAMAGED BY THE CONSTRUCTION, OR ANY SIDEWALK AND CURB AND GUTTER THAT THE CITY ENGINEER DETERMINES NEEDS TO BE REPLACED BECAUSE IT IS NOT AT A DESIRABLE GRADE REGARDLESS OF WHETHER THE CONDITION EXISTED PRIOR TO BEGINNING CONSTRUCTION.
9. ALL DEMOLITION SHALL BE IN ACCORDANCE WITH THE APPROVED CITY OF MADISON RECYCLING PLAN.
10. BACKFILL BASEMENT AND DISTURBED AREAS WITH SELECT FILL AND COMPACT IN ACCORDANCE WITH SECTION 207.3.63 OF WISDOT STANDARD SPECIFICATIONS.
11. ALL DISTURBED AREAS WILL BE PROVIDED WITH 4" OF TOPSOIL, GRADED TO DRAIN AND BE SEEDED AND MULCHED IN ACCORDANCE WITH CITY OF MADISON STANDARD SPECIFICATIONS.



VICINITY MAP
NOT TO SCALE

LEGEND (PROPOSED)

- PROPERTY LINE
- EXISTING MAJOR CONTOUR
- EXISTING MINOR CONTOUR
- DRIVEWAY REMOVAL
- ABANDON UTILITIES
- REMOVE UTILITIES
- SAWCUT

"BUILDING RELATIONSHIPS WITH A
COMMITMENT TO CLIENT SATISFACTION
THROUGH TRUST, QUALITY AND EXPERIENCE"

- CIVIL ENGINEERING
- SURVEYING & MAPPING
- CONSTRUCTION SERVICES
- WATER RESOURCES
- PLANNING & DEVELOPMENT
- TRANSPORTATION ENGINEERING
- STRUCTURAL ENGINEERING
- LANDSCAPE ARCHITECTURE

MADISON REGIONAL OFFICE
161 HORIZON DRIVE, SUITE 101
VERONA, WISCONSIN 53593
608.848.5060 PHONE | 608.848.2255 FAX
MADISON | MILWAUKEE
KENOSHA | APPLETON
www.jsdinc.com

SERVICES PROVIDED TO:
CERTCO, INC
5321 VERONA RD
MADISON, WI 53711

PROJECT:
4710 FEMRITE DRIVE

PROJECT LOCATION:
CITY OF MADISON
DANE COUNTY, WI
JSD PROJECT NO.: 08-3260

SEAL/SIGNATURE:

ALTHOUGH EVERY EFFORT HAS BEEN MADE
IN PREPARING THESE PLANS AND CHECKING
THEM FOR ACCURACY, THE CONTRACTOR
AND SUBCONTRACTORS MUST CHECK ALL
DETAIL AND DIMENSIONS OF THEIR TRADE
AND BE RESPONSIBLE FOR THE SAME.

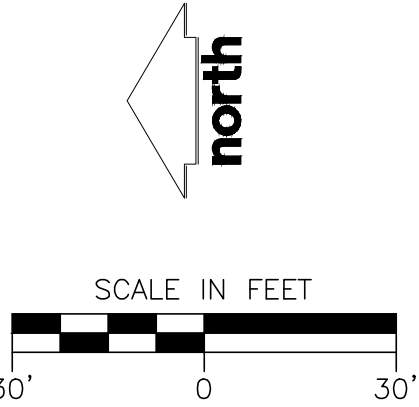
DESIGN:	JDS	02-08-2013
DRAWN:	SEM	05-16-2013
APPROVED:	BD	05-16-2013

PLAN MODIFICATIONS:	DATE:
CITY OF MADISON	5/17/2013

DIGGERS HOTLINE
Toll Free (800) 242-8511
Milwaukee Area (414) 259-1181
Hearing Impaired TDD (800) 542-2289
www.DiggersHotline.com

SHEET TITLE:
DEMOLITION PLAN

SHEET NUMBER:
C-1.0



THESE PLANS AND DESIGNS ARE COPYRIGHT PROTECTED AND MAY NOT BE USED IN WHOLE OR IN PART WITHOUT THE WRITTEN CONSENT OF JSD PROFESSIONAL SERVICES, INC.