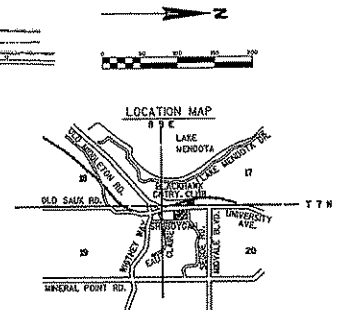


## PRELIMINARY PLAT OF HILL FARMS CENTRE

PART OF THE NORTH 1/2 OF THE NORTHWEST 1/4 OF SECTION 20, AND PART OF THE SOUTHWEST OF THE SOUTHWEST OF SECTION 17 IN TOWNSHIP 7 NORTH, RANGE 9 EAST, CITY OF MADISON, DANE COUNTY, WISCONSIN.

COORDINATES ARE REFERENCE TO THE WISCONSIN COUNTY COORDINATE SYSTEM, DANE COUNTY



NO.	REVISIONS	DATE

DATE 9/17/08  
DES BY NSB CHK BY  
RECORD DRAWING  
BY  
DATE  
CONTRACTOR

PRELIMINARY PLAT OF HILL FARMS CENTRE  
WISCONSIN DEPARTMENT OF ADMINISTRATION  
MADISON, WISCONSIN

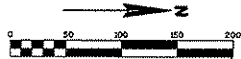


SHEET  
1 OF 4  
JOB NO

# PRELIMINARY PLAT OF HILL FARMS CENTRE

PART OF THE NORTH 1/2 OF THE NORTHWEST 1/4 OF SECTION 20,  
AND PART OF THE SOUTHEAST OF THE SOUTHWEST OF SECTION 17  
IN TOWNSHIP 7 NORTH, RANGE 9 EAST,  
CITY OF MADISON, DANE COUNTY, WISCONSIN.

COORDINATES ARE REFERENCE TO THE  
WISCONSIN COUNTY COORDINATE SYSTEM, DANE COUNTY



**BLOCK 31**  
UNIVERSITY HILL FARMS -  
PARK ADDITION

**OWNER**  
WISCONSIN DEPARTMENT OF ADMINISTRATION  
155 E. WILSON ST.  
MADISON, WI 53703

**SUBDIVIDER**  
WISCONSIN DEPARTMENT OF ADMINISTRATION  
155 E. WILSON ST.  
MADISON, WI 53703

**PROFESSIONAL LAND PLANNER**  
BRIAN JUNGSON  
VANDEWALLE ASSOCIATES  
120 E. LAKESIDE ST.  
MADISON, WI 53715

**SURVEYOR**  
STRAND ASSOCIATES, INC.  
910 W. WINGRA DR.  
MADISON, WI 53715

**ENGINEER**  
STRAND ASSOCIATES, INC.  
910 W. WINGRA DR.  
MADISON, WI 53715

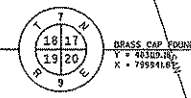
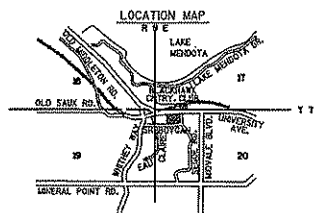
**APPROVAL AUTHORITIES**  
CITY OF MADISON PLAN COMMISSION  
CITY OF MADISON COMMON COUNCIL

BLD-ST  
RM#942.84  
E 12" RCP N#939.74

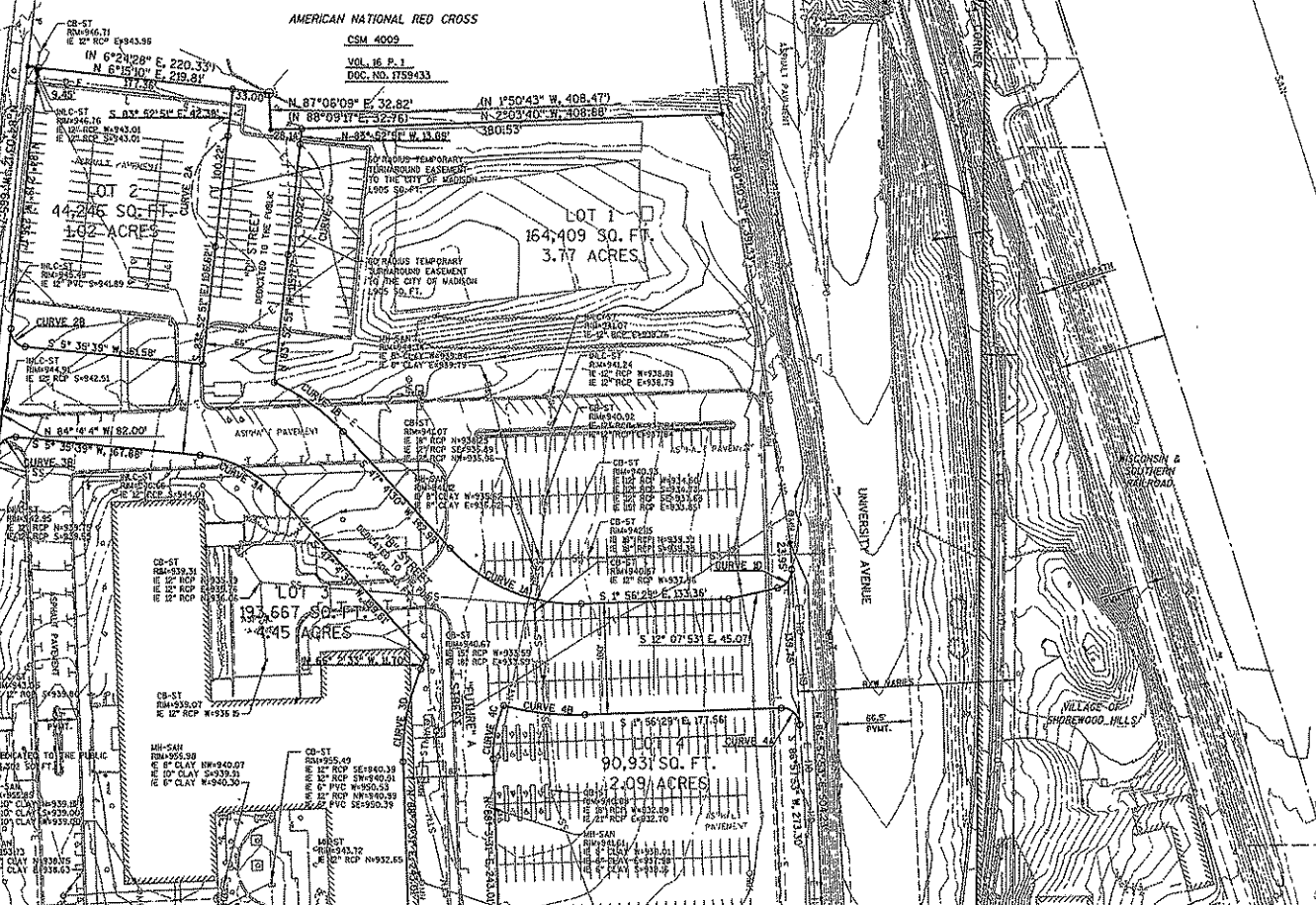
VALV-T-ST  
RM#944.41  
E 12" RCP N#939.95 X 4 PIPES  
E 12" RCP S#939.73

BLD-ST  
RM#942.82  
E 12" RCP S#939.72

**LOT 3**  
CSM 26  
VOL. 1P. 26



**AMERICAN NATIONAL RED CROSS**  
CSM 4009  
VOL. 16 P. 1  
DOC. NO. 1759433



MATCH LINE SEE SHEET 3 OF 4

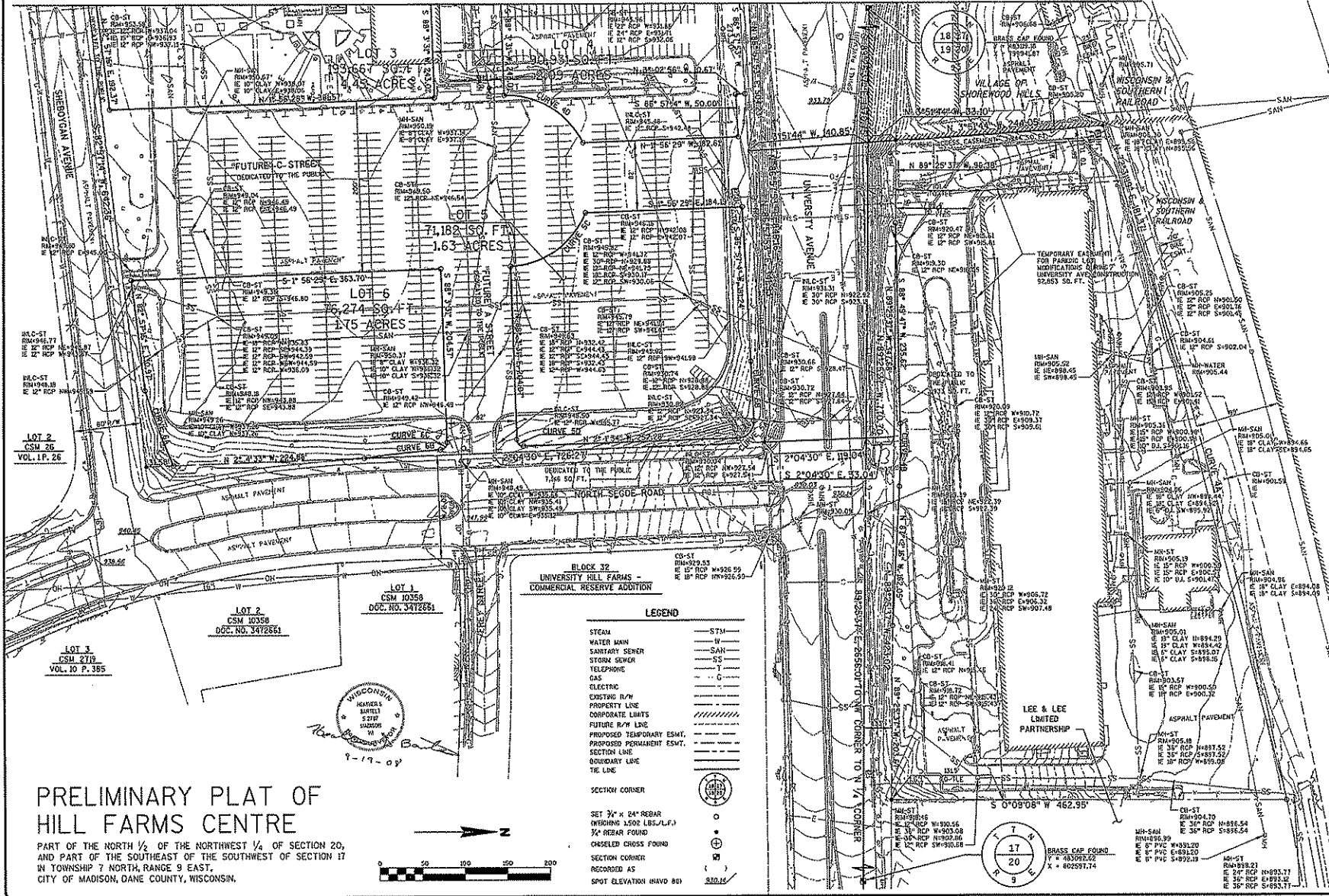
DATE	
REVISIONS	
NO.	
DATE	
DES. BY	
CHK. BY	
RECORDED DRAWING	
BY	
DATE	
CONTRACTOR	

**PRELIMINARY PLAT OF HILL FARMS CENTRE**  
WISCONSIN DEPARTMENT OF ADMINISTRATION  
MADISON, WISCONSIN

STRAND ASSOCIATED, INC. ENGINEERS

SHEET  
2 OF 4  
JOB NO.

MATCH LINE SEE SHEET 2 OF 4



# PRELIMINARY PLAT OF HILL FARMS CENTRE

PART OF THE NORTH 1/2 OF THE NORTHWEST 1/4 OF SECTION 20, AND PART OF THE SOUTHWEST OF THE SOUTHWEST OF SECTION 17 IN TOWNSHIP 7 NORTH, RANGE 9 EAST, CITY OF MADISON, DANE COUNTY, WISCONSIN.

**BLOCK 32**  
UNIVERSITY HILL FARMS -  
COMMERCIAL RESERVE ADDITION

- LEGEND**
- STEAM — STM
  - WATER MAIN — W
  - SANITARY SEWER — SAN
  - STORM SEWER — SS
  - TELEPHONE — T
  - GAS — G
  - ELECTRIC — E
  - COSTING R/W —
  - PROPERTY LINE —
  - CORPORATE LIMITS —
  - FUTURE R/W LINE —
  - PROPOSED TEMPORARY ESMT. —
  - PROPOSED PERMANENT ESMT. —
  - SECTION LINE —
  - BOUNDARY LINE —
  - THE LINE —
  - SECTION CORNER —
  - SET 3/4" x 24" REBAR (WEIGHING 3.502 LBS./L.F.) —
  - 3/4" REBAR FOUND —
  - CHASED CROSS FOUND —
  - SECTION CORNER RECORDED AS —
  - SPOT ELEVATION (HAND BE) —

NO.	REVISIONS	DATE

DATE 9/19/03  
RCS BY RES. CHK BY  
RECORD DRAWING  
BY DATE CONTRACTOR

**PRELIMINARY PLAT OF HILL FARMS CENTRE**  
WISCONSIN DEPARTMENT OF ADMINISTRATION  
MADISON, WISCONSIN



SHEET  
3 OF 4  
JOB NO.

S:\3601\1500--1509\1374\B16\McGraw\PLANS\Prelim\_Plat2.DGN

SUBSET

DATE:

TIME:

# PRELIMINARY PLAT OF HILL FARMS CENTRE

PART OF THE NORTH 1/2 OF THE NORTHWEST 1/4 OF SECTION 20,  
AND PART OF THE SOUTHEAST OF THE SOUTHWEST OF SECTION 17  
IN TOWNSHIP 7 NORTH, RANGE 9 EAST,  
CITY OF MADISON, DANE COUNTY, WISCONSIN.

Commencing at the NW corner of Section 20, Township 7 North  
Range 9 East; thence South 89° 25' 37" East a distance of 1370.75 feet  
to the Point of Beginning.

From P.O.B. North 3° 51' 44" West a distance of 33.10 feet,  
to the North right-of-way line of University Avenue;  
thence North 3° 51' 44" West a distance of 244.05 feet,  
to the South right of way line of Wisconsin and Southern Railroad;  
thence North 72° 31' 19" East along said right of way line  
a distance of 181.37 feet to a point of circular curve concave to  
the Southeast and having a radius of 5,680.15 feet; thence 635.44 feet  
along the arc of said circular curve whose long chord bears  
North 75° 39' 46" East, 635.11 feet; thence South 0° 09' 08" West a distance  
of 462.95 feet to the North right of way line of University Avenue;  
thence North 89° 25' 37" West a distance of 423.02 feet along said North line;  
thence South 2° 04' 30" East a distance of 33.04 feet  
to the North line of the Northwest quarter of said Section 20;  
thence South 2° 04' 30" East a distance of 119.04 feet to the intersection  
of the South right of way line of University Avenue and the West right of way  
line of Segoe Road; thence along the West right of way Segoe Road, South 2° 04' 30" East  
a distance of 726.27 feet to the North right of way line of Sheboygon Avenue;  
thence, along said North line, South 82° 57' 14" West a distance of 642.36 feet;  
thence continuing along said North line, North 84° 03' 12" West  
a distance of 865.71 feet to the East line of C.S.M 4009;  
thence North 6° 15' 10" East a distance of 219.81 feet along said East line;  
thence North 87° 08' 09" East a distance of 32.82 feet along said East line;  
thence continuing along said East line North 2° 03' 40" West a distance  
of 408.68 feet to the south line of University Avenue;  
thence North 80° 50' 53" East a distance of 391.33 feet along said South line;  
thence continuing along said south line North 86° 57' 53" East a distance  
of 504.23 feet; thence North 3° 51' 44" West a distance of 140.85 feet to the P.O.B.

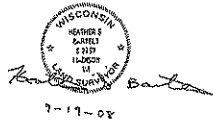
Containing 28.74 acres, more or less.

<b>CURVE 1A</b> RADIUS = 155.00 DELTA = 49° 00' 59" DEG. = 36° 57' 54" L.C.B. = N 22° 34' 0" E L.C. = 128.60' L = 132.60' T = 70.65'	<b>CURVE 1B</b> RADIUS = 191.00 DELTA = 23° 5' 31" DEG. = 23° 59' 52" L.C.B. = S 35° 31' 52" W L.C. = 76.45' L = 76.97' T = 39.07'	<b>CURVE 1C</b> RADIUS = 60.00 DELTA = 113° 16' 14" DEG. = 95° 29' 35" L.C.B. = N 83° 52' 51" W L.C. = 100.22' L = 118.62' T = 91.12'	<b>CURVE 1D</b> RADIUS = 15.00' DELTA = 80° 54' 14" DEG. = 358° 30' 55" L.C.B. = N 52° 35' 0" W L.C. = 20.76' L = 22.59' T = 13.64'	<b>CURVE 2A</b> RADIUS = 60.00 DELTA = 113° 15' 41" DEG. = 95° 29' 35" L.C.B. = S 83° 52' 51" E L.C. = 100.22' L = 118.61' T = 91.10'	<b>CURVE 2B</b> RADIUS = 15.00' DELTA = 90° 27' 56" DEG. = 21° 58' 19" L.C.B. = S 50° 46' 37" W L.C. = 21.28' L = 23.66' T = 15.10'
---	---	--	--	--	--

<b>CURVE 3A</b> RADIUS = 109.00 DELTA = 41° 28' 51" DEG. = 52° 33' 54" L.C.B. = S 26° 20' 4" W L.C. = 77.20' L = 78.31' T = 41.28'	<b>CURVE 3B</b> RADIUS = 15.00' DELTA = 89° 39' 43" DEG. = 21° 58' 19" L.C.B. = S 39° 14' 19" E L.C. = 21.15' L = 23.47' T = 14.91'	<b>CURVE 3C</b> RADIUS = 250.50 DELTA = 12° 58' 40" DEG. = 22° 52' 21" L.C.B. = N 89° 26' 36" E L.C. = 55.62' L = 56.74' T = 28.49'	<b>CURVE 3D</b> RADIUS = 191.00' DELTA = 25° 53' 54" DEG. = 29° 59' 52" L.C.B. = N 78° 59' 32" W L.C. = 85.60' L = 86.33' T = 43.92'	<b>CURVE 4A</b> RADIUS = 15.00' DELTA = 88° 54' 22" DEG. = 358° 5' 55" L.C.B. = S 42° 30' 42" W L.C. = 24.83' L = 24.93' T = 15.70'	<b>CURVE 4B</b> RADIUS = 255.00 DELTA = 16° 38' 22" DEG. = 22° 28' 8" L.C.B. = S 6° 22' 42" W L.C. = 73.80' L = 74.00' T = 37.29'
---	--	--	---	--	--

<b>CURVE 4C</b> RADIUS = 109.00' DELTA = 25° 0' 52" DEG. = 52° 33' 54" L.C.B. = S 78° 56' 3" E L.C. = 49.07' L = 49.45' T = 25.18'	<b>CURVE 4D</b> RADIUS = 100.00' DELTA = 65° 24' 15" DEG. = 51° 17' 45" L.C.B. = S 31° 9' 6" E L.C. = 108.05' L = 114.15' T = 54.20'	<b>CURVE 5A</b> RADIUS = 13.00' DELTA = 90° 30' 43" DEG. = 30° 33' 24" L.C.B. = N 47° 16' 56" W L.C. = 25.99' L = 30.00' T = 19.11'	<b>CURVE 5B</b> RADIUS = 7887.50' DELTA = 0° 30' 38" DEG. = 0° 43' 35" L.C.B. = N 87° 12' 24" E L.C. = 70.50' L = 70.50' T = 35.15'	<b>CURVE 5C</b> RADIUS = 100.00' DELTA = 65° 24' 15" DEG. = 51° 17' 45" L.C.B. = S 35° 2' 4" E L.C. = 108.05' L = 114.15' T = 54.20'	<b>CURVE 5D</b> RADIUS = 8.00' DELTA = 90° 5' 5" DEG. = 358° 11' 50" L.C.B. = N 43° 0' 50" E L.C. = 11.52' L = 12.58' T = 8.07'
---	---	--	--	---	--

<b>CURVE 6A</b> RADIUS = 780.50' DELTA = 6° 54' 11" DEG. = 7° 20' 27" L.C.B. = N 69° 26' 32" E L.C. = 83.98' L = 94.04' T = 47.08'	<b>CURVE 6B</b> RADIUS = 1019.50' DELTA = 5° 2' 19" DEG. = 5° 37' 12" L.C.B. = N 6° 3' 21" W L.C. = 89.53' L = 89.65' T = 44.88'	<b>CURVE 6C</b> RADIUS = 8.00' DELTA = 88° 24' 38" DEG. = 358° 1' 50" L.C.B. = N 47° 44' 20" W L.C. = 11.50' L = 12.34' T = 7.78'	<b>CURVE 7A</b> RADIUS = 5680.15' DELTA = 6° 24' 35" DEG. = 1° 0' 31" L.C.B. = N 75° 39' 46" E L.C. = 635.44' L = 635.44' T = 318.05'	<b>CURVE 7B</b> RADIUS = 1015.50' DELTA = 4° 7' 58" DEG. = 5° 38' 32" L.C.B. = N 89° 06' 14" W L.C. = 73.29' L = 73.29' T = 36.64'
---	---	--	--	---



7-17-02

	DATE			
REVISIONS	NO.	DATE	BY	CONTRACTOR
DATE 5/17/02	DES BY HES CIVIL BY	RECORD DRAWING	BY	DATE
<b>PRELIMINARY PLAT OF HILL FARMS CENTRE</b> WISCONSIN DEPARTMENT OF ADMINISTRATION MADISON, WISCONSIN				
 <b>STRAND ASSOCIATES, INC.</b> ENGINEERS				
SHEET				
4 OF 4				
JOB NO				