

All Saints Assisted Living Phase 3

503, 511, 519 Commerce Dr.
Madison, WI



PROJECT DIRECTORY:

<p>OWNER: All Saints Assisted Living Center, Inc. A Non-Profit Organization Affiliated W/ Catholic Charities, Inc. 702 S. High Point Road Madison, WI 53719-3522</p> <p>ARCHITECT: Architecture 2000, LLC 311 E. Chicago, Suite 310 Milwaukee, WI 53202 TEL: (414) 727-2321 email: steve@aha-2k.com ATTN: Steven M. Easer</p>	<p>MANAGEMENT/OWNER CONSULTANT: Elderspan Management, LLC 1402 Parkrate St., Suite 110 Madison, WI 53704 TEL: (609) 243-8800 FAX: (609) 243-3237 ATTN: Jon Nivvig</p> <p>LANDSCAPE ARCHITECT: Landscape Architecture, LLC P.O. Box 56225 Milwaukee, WI 53252 TEL: (609) 798-1840 email: www.landscape.com ATTN: Joe Hamner</p>	<p>GENERAL CONTRACTOR/DEVELOPER: Horizon Construction Group, LLC 1031 North Edge Trail Verona, WI 53593 TEL: (609) 248-0391 email: www.horizoncgr.com ATTN: Aaron Gendlach</p> <p>CIVIL ENGINEER/SURVEYOR: Vierbicher 599 Fountain Dr., Suite 201 Madison, WI 53717 TEL: (609) 826-0148 email: www.vierbicher.com ATTN: Timothy Schlepfer</p>	<p>KITCHEN: KESSENICH'S LTD 131 SOUTH FAIR OAKS AVE MADISON, WI 53704 TEL: (609) 248-0391 FAX: (609) 249-1628 ATTN: BRUCE SPICER</p> <p>STRUCTURAL: Pierce Engineers, Inc. 241 Broadway Ave., Suite 500 Milwaukee, WI 53202 TEL: (414) 278-6969 ATTN: Tom Cowan</p>
---	--	---	---

PROJECT INFORMATION:

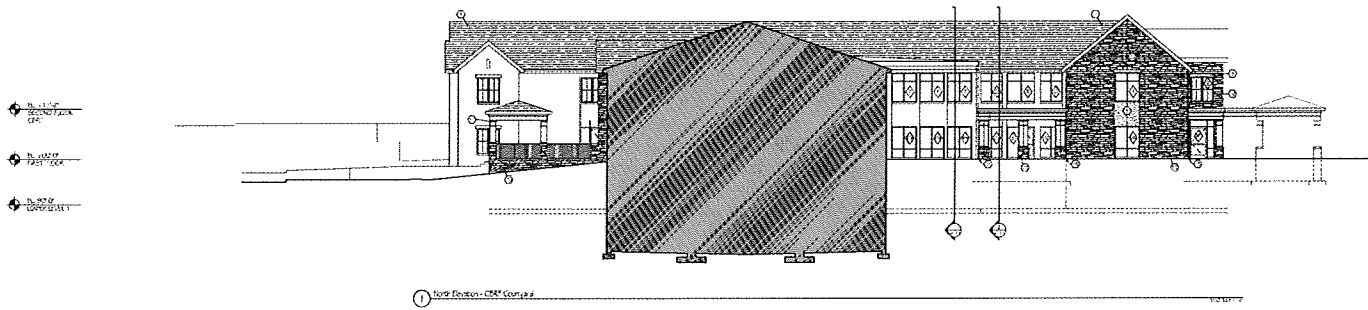
<p>Governing Code: Wisconsin adopted 2009 IBC DOB 01 - CDRF</p> <p>Construction type: VA - wood frame protected above (A & B) (CBRF) R.I.E., A.I., B.I., R., S.</p> <p>Occupancy classification: supervised care</p> <p>Regulated application: See How Application (2011) 23 from units 10 and 11, 12, 13 Fire w/LL, Smoke Barrier and Fire Barriers</p> <p>Number of stories above grade: 4 (3-1)</p> <p>Number of stories below grade: 0</p> <p>Spillable contents: None</p> <p>Allowable area per Foot of fire wall: 15,000sf</p> <p>Actual Allowable Building area: 21,000sf above 24,500sf below</p> <p>Actual Allowable Building area: 35,054sf above unlimited below</p>	<p>Fire code editions: Number of tables: 1.1 1.2</p> <p>ACCESSIBILITY: Comply with ADA and 2010 Building Code, at least 75% shall be Type A. 25% shall be the 2nd portion of building. 10 units (150 - 200 sq ft) are wheelchair accessible. See also 211.12.1.2.3.3 (2nd) and 211.12.1.2.3.4 (2nd) (2nd) (2nd).</p> <p>TOTAL DEVELOPED AREA: Level Level 1 Four Area: 28,234sf Level Level 2 Four Area: 47,554sf Fire Floor Area: 41,456sf Roofed Floor Area: 41,456sf Ponded Floor Area: 18,844sf</p>
---	--

SHEET INDEX:

SHEET	DESCRIPTION
T1	TITLE SHEET
ARCHITECTURAL DRAWINGS	
A2.1	EXTERIOR ELEVATIONS - SE
A2.2	EXTERIOR ELEVATIONS - SW
A2.3	EXTERIOR ELEVATIONS - CBRF
A2.4	EXTERIOR ELEVATIONS - CBRF

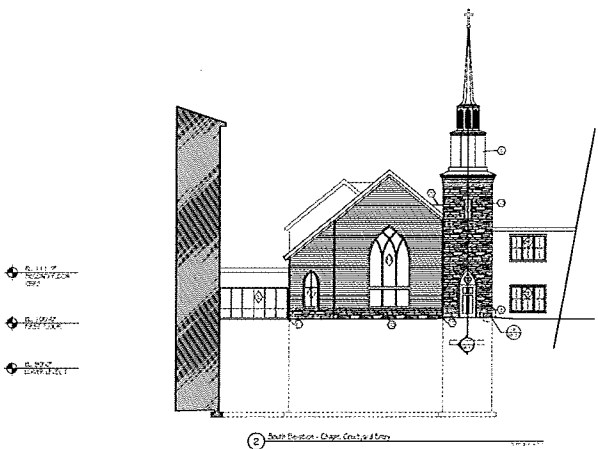
VICINITY MAP



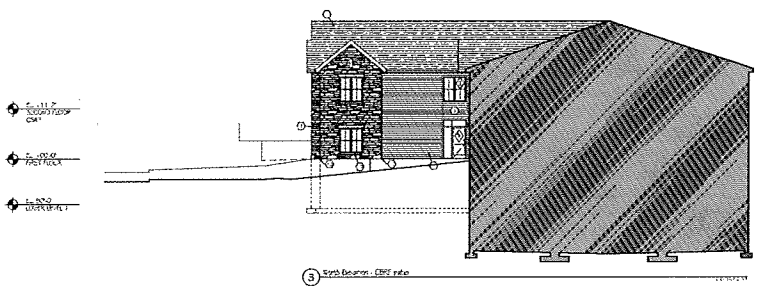


- 1. CONCRETE FOUNDATION WITH REINFORCING BARS
- 2. 4" POLYSTYRENE INSULATION
- 3. 4" CONCRETE SLAB ON GRADE
- 4. 2" POLYSTYRENE INSULATION
- 5. 4" CONCRETE SLAB ON GRADE
- 6. 2" POLYSTYRENE INSULATION
- 7. 4" CONCRETE SLAB ON GRADE
- 8. 2" POLYSTYRENE INSULATION
- 9. 4" CONCRETE SLAB ON GRADE
- 10. 2" POLYSTYRENE INSULATION
- 11. 4" CONCRETE SLAB ON GRADE
- 12. 2" POLYSTYRENE INSULATION
- 13. 4" CONCRETE SLAB ON GRADE
- 14. 2" POLYSTYRENE INSULATION
- 15. 4" CONCRETE SLAB ON GRADE
- 16. 2" POLYSTYRENE INSULATION
- 17. 4" CONCRETE SLAB ON GRADE
- 18. 2" POLYSTYRENE INSULATION
- 19. 4" CONCRETE SLAB ON GRADE
- 20. 2" POLYSTYRENE INSULATION
- 21. 4" CONCRETE SLAB ON GRADE
- 22. 2" POLYSTYRENE INSULATION
- 23. 4" CONCRETE SLAB ON GRADE
- 24. 2" POLYSTYRENE INSULATION
- 25. 4" CONCRETE SLAB ON GRADE
- 26. 2" POLYSTYRENE INSULATION
- 27. 4" CONCRETE SLAB ON GRADE
- 28. 2" POLYSTYRENE INSULATION
- 29. 4" CONCRETE SLAB ON GRADE
- 30. 2" POLYSTYRENE INSULATION
- 31. 4" CONCRETE SLAB ON GRADE
- 32. 2" POLYSTYRENE INSULATION
- 33. 4" CONCRETE SLAB ON GRADE
- 34. 2" POLYSTYRENE INSULATION
- 35. 4" CONCRETE SLAB ON GRADE
- 36. 2" POLYSTYRENE INSULATION
- 37. 4" CONCRETE SLAB ON GRADE
- 38. 2" POLYSTYRENE INSULATION
- 39. 4" CONCRETE SLAB ON GRADE
- 40. 2" POLYSTYRENE INSULATION
- 41. 4" CONCRETE SLAB ON GRADE
- 42. 2" POLYSTYRENE INSULATION
- 43. 4" CONCRETE SLAB ON GRADE
- 44. 2" POLYSTYRENE INSULATION
- 45. 4" CONCRETE SLAB ON GRADE
- 46. 2" POLYSTYRENE INSULATION
- 47. 4" CONCRETE SLAB ON GRADE
- 48. 2" POLYSTYRENE INSULATION
- 49. 4" CONCRETE SLAB ON GRADE
- 50. 2" POLYSTYRENE INSULATION
- 51. 4" CONCRETE SLAB ON GRADE
- 52. 2" POLYSTYRENE INSULATION
- 53. 4" CONCRETE SLAB ON GRADE
- 54. 2" POLYSTYRENE INSULATION
- 55. 4" CONCRETE SLAB ON GRADE
- 56. 2" POLYSTYRENE INSULATION
- 57. 4" CONCRETE SLAB ON GRADE
- 58. 2" POLYSTYRENE INSULATION
- 59. 4" CONCRETE SLAB ON GRADE
- 60. 2" POLYSTYRENE INSULATION
- 61. 4" CONCRETE SLAB ON GRADE
- 62. 2" POLYSTYRENE INSULATION
- 63. 4" CONCRETE SLAB ON GRADE
- 64. 2" POLYSTYRENE INSULATION
- 65. 4" CONCRETE SLAB ON GRADE
- 66. 2" POLYSTYRENE INSULATION
- 67. 4" CONCRETE SLAB ON GRADE
- 68. 2" POLYSTYRENE INSULATION
- 69. 4" CONCRETE SLAB ON GRADE
- 70. 2" POLYSTYRENE INSULATION
- 71. 4" CONCRETE SLAB ON GRADE
- 72. 2" POLYSTYRENE INSULATION
- 73. 4" CONCRETE SLAB ON GRADE
- 74. 2" POLYSTYRENE INSULATION
- 75. 4" CONCRETE SLAB ON GRADE
- 76. 2" POLYSTYRENE INSULATION
- 77. 4" CONCRETE SLAB ON GRADE
- 78. 2" POLYSTYRENE INSULATION
- 79. 4" CONCRETE SLAB ON GRADE
- 80. 2" POLYSTYRENE INSULATION
- 81. 4" CONCRETE SLAB ON GRADE
- 82. 2" POLYSTYRENE INSULATION
- 83. 4" CONCRETE SLAB ON GRADE
- 84. 2" POLYSTYRENE INSULATION
- 85. 4" CONCRETE SLAB ON GRADE
- 86. 2" POLYSTYRENE INSULATION
- 87. 4" CONCRETE SLAB ON GRADE
- 88. 2" POLYSTYRENE INSULATION
- 89. 4" CONCRETE SLAB ON GRADE
- 90. 2" POLYSTYRENE INSULATION
- 91. 4" CONCRETE SLAB ON GRADE
- 92. 2" POLYSTYRENE INSULATION
- 93. 4" CONCRETE SLAB ON GRADE
- 94. 2" POLYSTYRENE INSULATION
- 95. 4" CONCRETE SLAB ON GRADE
- 96. 2" POLYSTYRENE INSULATION
- 97. 4" CONCRETE SLAB ON GRADE
- 98. 2" POLYSTYRENE INSULATION
- 99. 4" CONCRETE SLAB ON GRADE
- 100. 2" POLYSTYRENE INSULATION

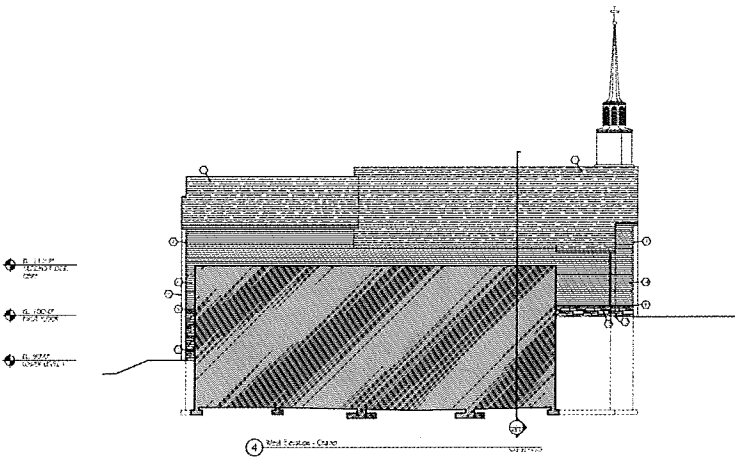
1 Main Section - Main Courtyard



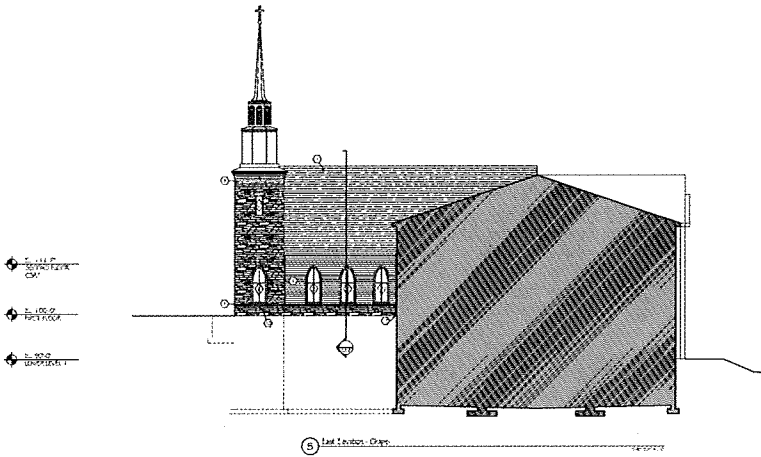
2 Main Section - Church Tower & Bay



3 Main Section - Church Tower



4 Main Section - Church



5 Main Section - Church

All Saints Campus Phase III
 503, 511, 519 Commerce Dr.
 Madison, WI

CONSTRUCTION SET

PROJECT NO.	503, 511, 519
PROJECT NAME	ALL SAINTS
DATE	12/15/2015
SCALE	AS SHOWN
DESIGNER	A2K
CHECKED BY	
DATE	
SCALE	
PROJECT #	511
DATE	12/15/2015
SCALE	AS SHOWN
DESIGNER	A2K
CHECKED BY	
DATE	
SCALE	

Sheet: **A2.4**