



The Hub at Madison - Combined Submittal Drawings
Supplemental Drawing #2

The Hub at Madison Madison, Wisconsin

Core Campus · Myefski Architects · Antunovich Associates

View Looking Southeast on State Street

29A

July 17, 2013



The Hub at Madison - Combined Submittal Drawings
Supplemental Drawing #2

The Hub at Madison Madison, Wisconsin | Core Campus · Myefski Architects · Antunovich Associates

Sidewalk View Looking Southeast on State Street

29B

July 17, 2013



The Hub at Madison - Combined Submittal Drawings
Supplemental Drawing #2

The Hub at Madison Madison, Wisconsin

Core Campus · Myefski Architects · Antunovich Associates

View Looking Southwest on State Street

34D

July 17, 2013



The Hub at Madison - Combined Submittal Drawings
Supplemental Drawing #2

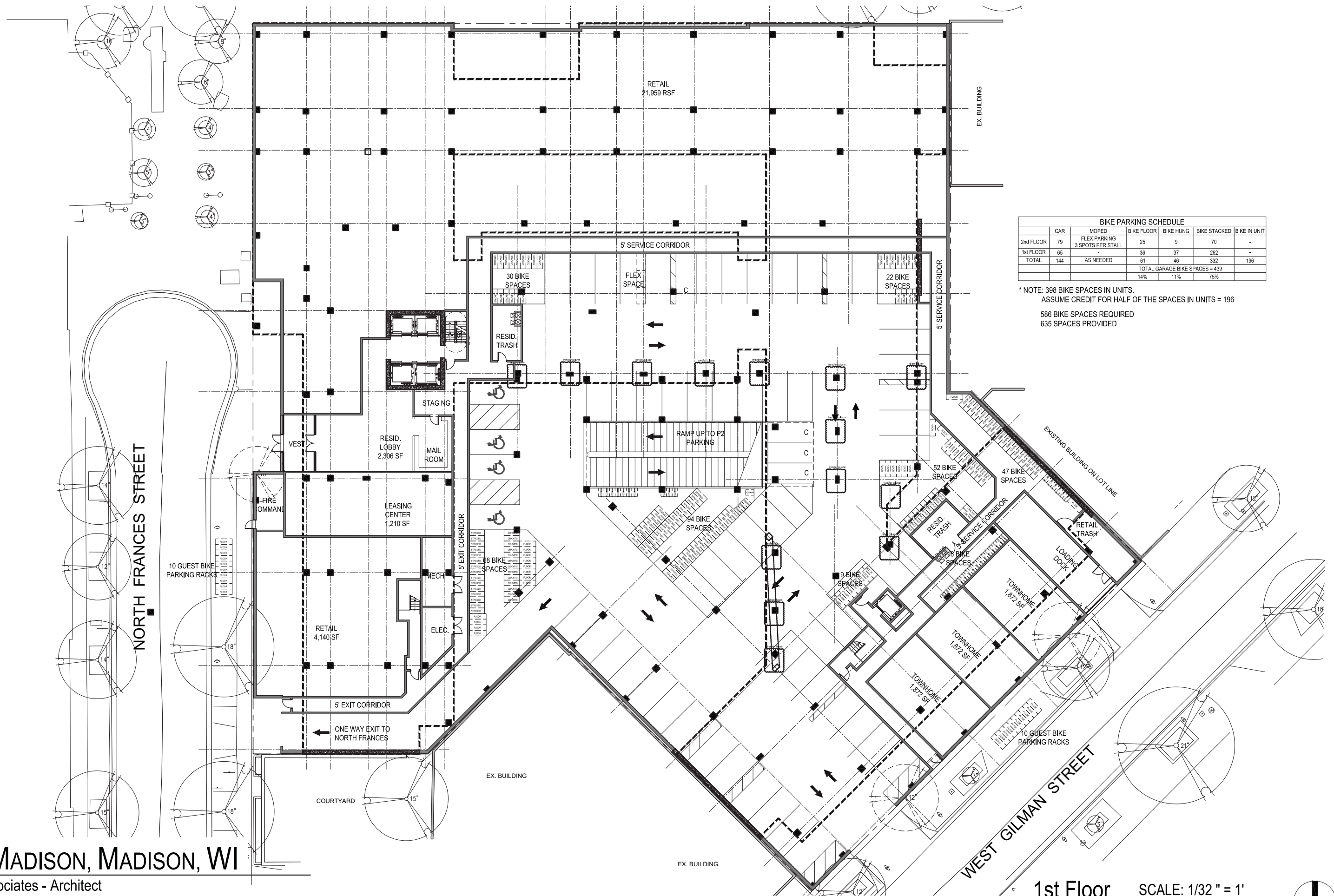
The Hub at Madison Madison, Wisconsin

Core Campus · Myefski Architects · Antunovich Associates

Enlarged View Looking Southwest on State Street

34E

July 17, 2013



BIKE PARKING SCHEDULE						
	CAR	MOPED	BIKE FLOOR	BIKE HUNG	BIKE STACKED	BIKE IN UNIT
2nd FLOOR	79	FLEX PARKING 3 SPOTS PER STALL	25	9	70	-
1st FLOOR	65	AS NEEDED	36	37	262	-
TOTAL	144	AS NEEDED	61	46	332	196
			TOTAL GARAGE BIKE SPACES = 439			
			14%	11%	75%	

* NOTE: 398 BIKE SPACES IN UNITS.
 ASSUME CREDIT FOR HALF OF THE SPACES IN UNITS = 196
 586 BIKE SPACES REQUIRED
 635 SPACES PROVIDED

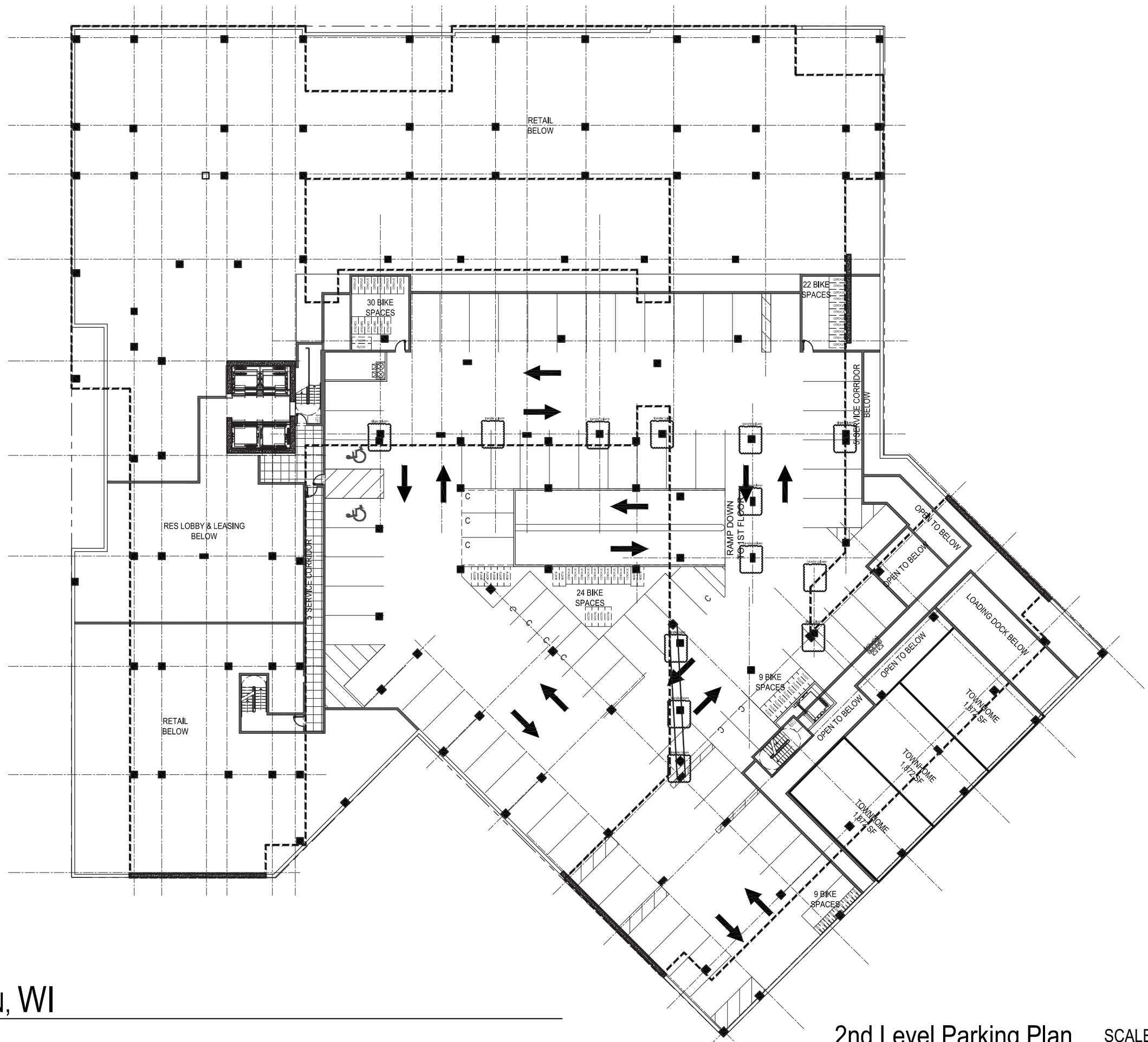
HUB AT MADISON, MADISON, WI

Antunovich Associates - Architect
 Myefski Architects - Associate Architect
 Core Campus Communities, LLC - Developer

1st Floor

SCALE: 1/32" = 1'
 JULY 17, 2013





HUB AT MADISON, MADISON, WI

Antunovich Associates - Architect
 Myefski Architects - Associate Architect
 Core Campus Communities, LLC - Developer

2nd Level Parking Plan

SCALE: 1/32" = 1'-0"
 July 17, 2013

