

8 April 2005

Alderman Santiago Rosas
Office of the Common Council
City of Madison
210 Martin Luther King, Jr. Blvd.
Madison, WI 53703

Mr. Jeff Barnhart
Ridgewood Neighborhood Association
1513 Wayridge Drive
Madison, WI 53704

Re: Our Client: Eagle Aerie, LLC

Dear Alderman Rosas and Mr. Barnhart:

We are the attorneys for Eagle Aerie, LLC, a Wisconsin limited liability company consisting of William Ziegler and Lynn Goldade Ziegler. Eagle Aerie, LLC owns the vacant land south of Ridgewood the Glacier Addition and north of County Trunk Highway T (the old Ziegler farm) that was just recently annexed to the City of Madison. That land, when it was annexed, was zoned Temporary Ag as a holding classification pursuant to City ordinances.

Eagle Aerie, LLC has been in discussions with The Evangelical Lutheran Church of the Holy Cross, Inc. relative to relocating the Holy Cross congregation to the northern portion of the Eagle Aerie parcel.

In that regard, and assuming that those discussions will come to fruition, Eagle Aerie, LLC has had prepared a draft Preliminary Plat to create an approximately 12 acre parcel for the potential church siting. We are herewith enclosing a copy of the draft Preliminary Plat. Assuming that the Church wishes to proceed and based upon discussions with the neighborhood association, Eagle Aerie, LLC would intend to apply for preliminary plat approval for rezoning (from Temporary Ag to R1 or R2).

Representatives of Eagle Aerie, LLC would welcome the opportunity to meet with the Ridgewood Neighborhood Association to discuss the development of the Eagle Aerie parcel and assuming that the Church decides that it would like to proceed, we also assume that representatives of the Church would be available for that meeting.

Alderman Santiago Rosas
Mr. Jeff Barnhart
8 April 2005
Page 2

We would ask that you contact us in order that we can arrange for a meeting with the Ridgewood Neighborhood Association to review the status of the development of the Eagle Aerie, LLC parcel and to discuss any neighborhood concerns relative to that development.

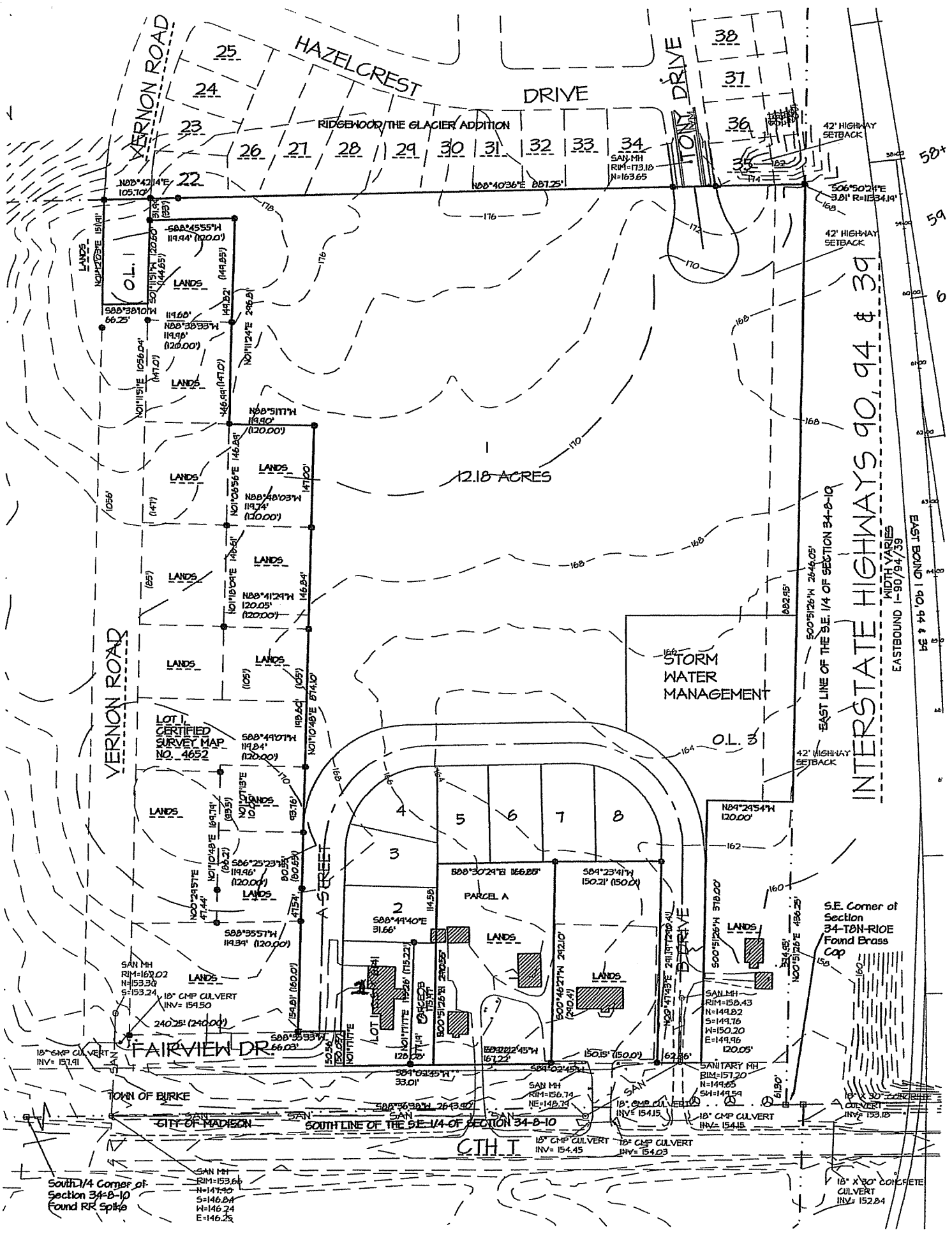
We look forward to hearing from you at your first opportunity.

Very truly yours,



Ronald M. Trachtenberg

RMT:srp
221023
rosas barnhart 040805
Enclosure
cc: Eagle Aerie, LLC
Attn.: Mr. William L. Ziegler
Attn.: Ms. Lynn Goldade Ziegler



INTERSTATE HIGHWAYS 90, 94 & 39

EAST LINE OF THE SE 1/4 OF SECTION 34-B-10

EASTBOUND 1-90/94/39

S.E. Corner of Section 34-B-10-RIE Found Brass Cap

South 1/4 Corner of Section 34-B-10 Found RR Spike