

# Community Education Center

55 S. Gammon Rd.  
Madison, Wisconsin 53717

## Submission for Rezoning, Conditional Use & Certified Survey Map July 13, 2005

### Drawing Index

T-1	Title Page
SV-1.0	Site Survey
<b>Site</b>	
S1.1	Storm Water & Grading Plan
L1.1	LAYOUT PLAN
L2.1	Erosion Control Plan
L3.1	Landscaping Plan
MEP1.0	Mechanical, Electrical & Plumbing Site Plan
<b>ARCHITECTURAL</b>	
A1.1	Floor Plans
A2.1	Elevations

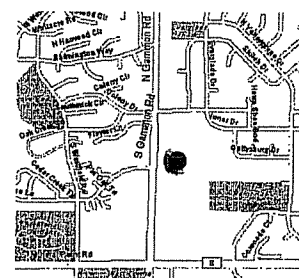
### Material Symbols

	Earth/Compacted Fill		Insulation (Bat/Locac)
	Concrete		Insulation (Rigid)
	Sand, Grout, Mortar		Gypsum Wall Board (GWB)
	Concrete Masonry Units (CMU)		Glass
	Brick		Acoustic Tile (Large Scale)
	Stone		Ceramic/Quarry Tile
	Metal (Larger Scale)	<b>ELEVATION</b>	
	Wood (Rough)		Concrete, Plaster
	Wood (Blocking)		Sheet Metal (Large Scale)
	Wood (Finish)		Brick
	Plywood (Large Scale)		Glass
	Plywood (Small Scale)		

### Graphic Symbols

	Existing Spot Elevation	<b>SECTION/DETAIL REFERENCES</b>	
	Proposed Spot Elevation		Section Number
	Existing Contour		Drawing Number
	Proposed Contour		Building Section
	Level Line/ Datum Elevation		Wall Section/ Elevation
	Room Name and Number		Detail Reference
			Door Number
			New
			Existing

### Location Map



Community Education Center  
55 S. Gammon Rd.  
Madison, Wisconsin 53717



T-1 TITLE PAGE

UTILITY LOCATED AS PER OWNER'S RECORDS. CHECK NO. 88587. BEFORE ANY DIGGING, BORING, CONSTRUCTION, ETC., OWNER'S UTILITY IS TO BE CALLED AT 1-800-84-5811 FOR SAFETY AND UTILITY PURPOSES FOR ALL PARTIES CONCERNED.

- LEGEND**
- SIGN (TYPE NOTED)
  - ◻ INDUSTRIAL HOOP
  - ◻ WATER BAY OFF VALVE
  - ◻ FIRE HYDRANT
  - ◻ ELECTRIC TRANSFORMER
  - ◻ CABLE TV FEDERAL
  - ◻ TELEPHONE FEDERAL
  - ◻ UTILITY POLE
  - ◻ REDWOOD TREE
  - ◻ PINE TREE
  - ◻ LIGHT POLE
  - ◻ FLAG POLE
  - ◻ CATCH BASIN
  - ◻ ELECTRIC TRANSFORMER BOX
  - ◻ STORM INLET
  - ◻ EXERCISE EQUIPMENT SUPPORT POLE
- SCALE 1" = 30'**
- GRID NORTH**
- GAS LINE
  - WATER LINE
  - BUNDLED TELEPHONE
  - BUNDLED ELECTRIC
  - ENHANCED UTILITY
  - CHAIN LINK FENCE
  - SANDWICH BOARD
  - STORM SEWER
- CONCRETE**
- BRICKWORK PERIMETER**
- CONCRETE PERIMETER**
- CONCRETE PERIMETER = 1 FOOT (SEE NOTES)**
- ALL STRUCTURES CONSTRUCTED BY CONTRACTOR**

**SUBJECT PROPERTY:**  
 THOMAS JEFFERSON MIDDLE SCHOOL  
 101 S. GAMMON RD  
 MADISON, WI 53717

**OWNER:**  
 MADISON METROPOLITAN SCHOOL DISTRICT.

**BENCHMARK 1:** TOP OF HYDRANT ON EAST SIDE OF S. GAMMON ROAD NEAR SOUTHWEST CORNER OF JAMES MADISON MEMORIAL HIGH SCHOOL BUILDING. PUBLISHED ELEVATION = 212.73 FEET.

**BENCHMARK 2:** TOP OF HYDRANT ON EAST SIDE OF S. GAMMON ROAD 370 FEET ± SOUTH OF TREE LANE. PUBLISHED ELEVATION = 205.44 FEET.

This map was prepared by Birrenkott Surveying, Inc. under contract to the Madison Metropolitan School District. The map is not to be used for any other purpose without the written consent of Birrenkott Surveying, Inc. All measurements are in feet unless otherwise noted.

**BIRRENKOTT SURVEYING INC.**  
 LAND SURVEYING & PERC TESTING

P.O. BOX 237  
 1877 N. EASTWIL ST.  
 SUN PRAIRIE, WI, 53590

(608) 837-7463  
 FAX (608) 837-1081

**TOPOGRAPHIC MAP**

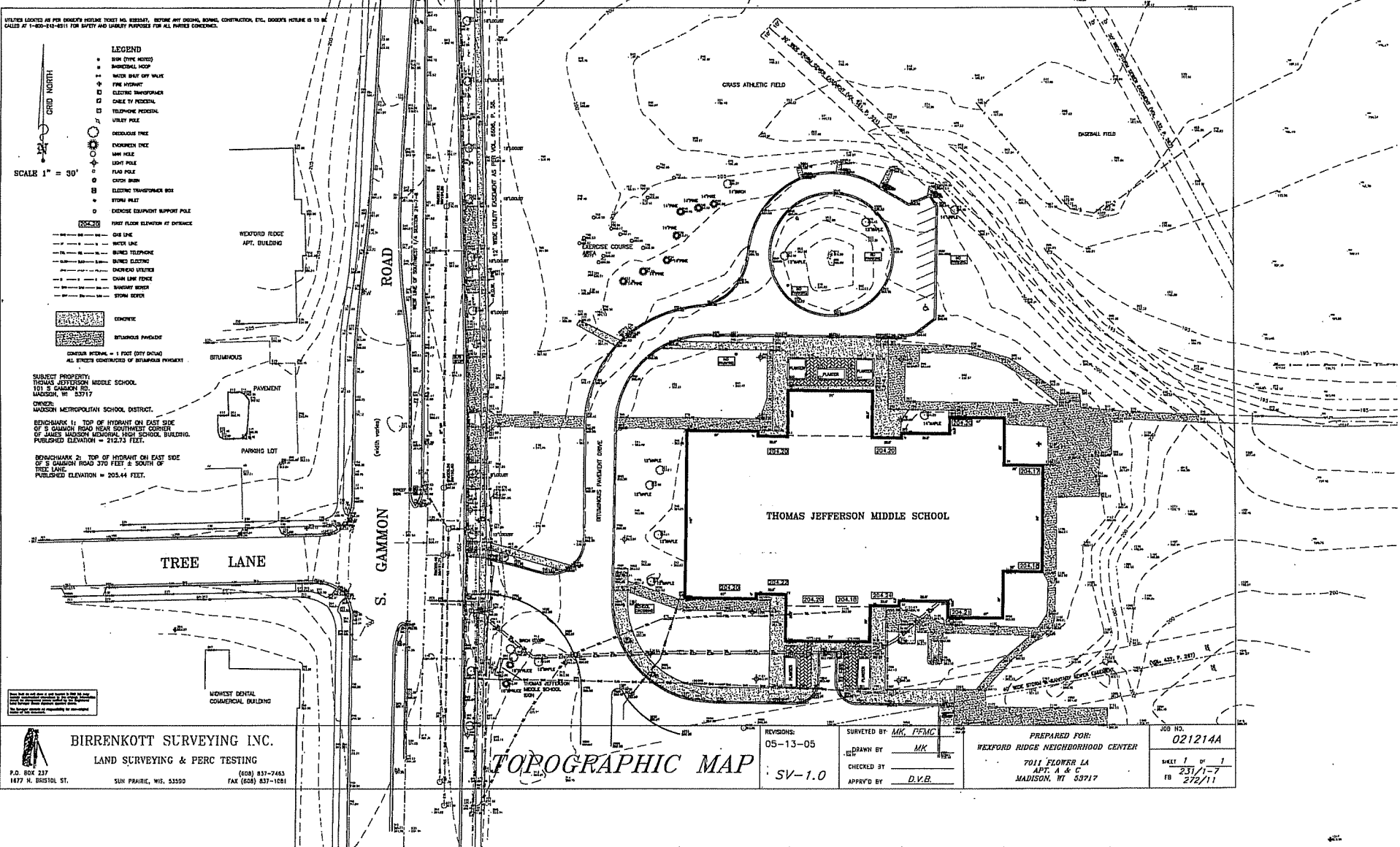
REVISIONS:  
 05-13-05  
 SV-1.0

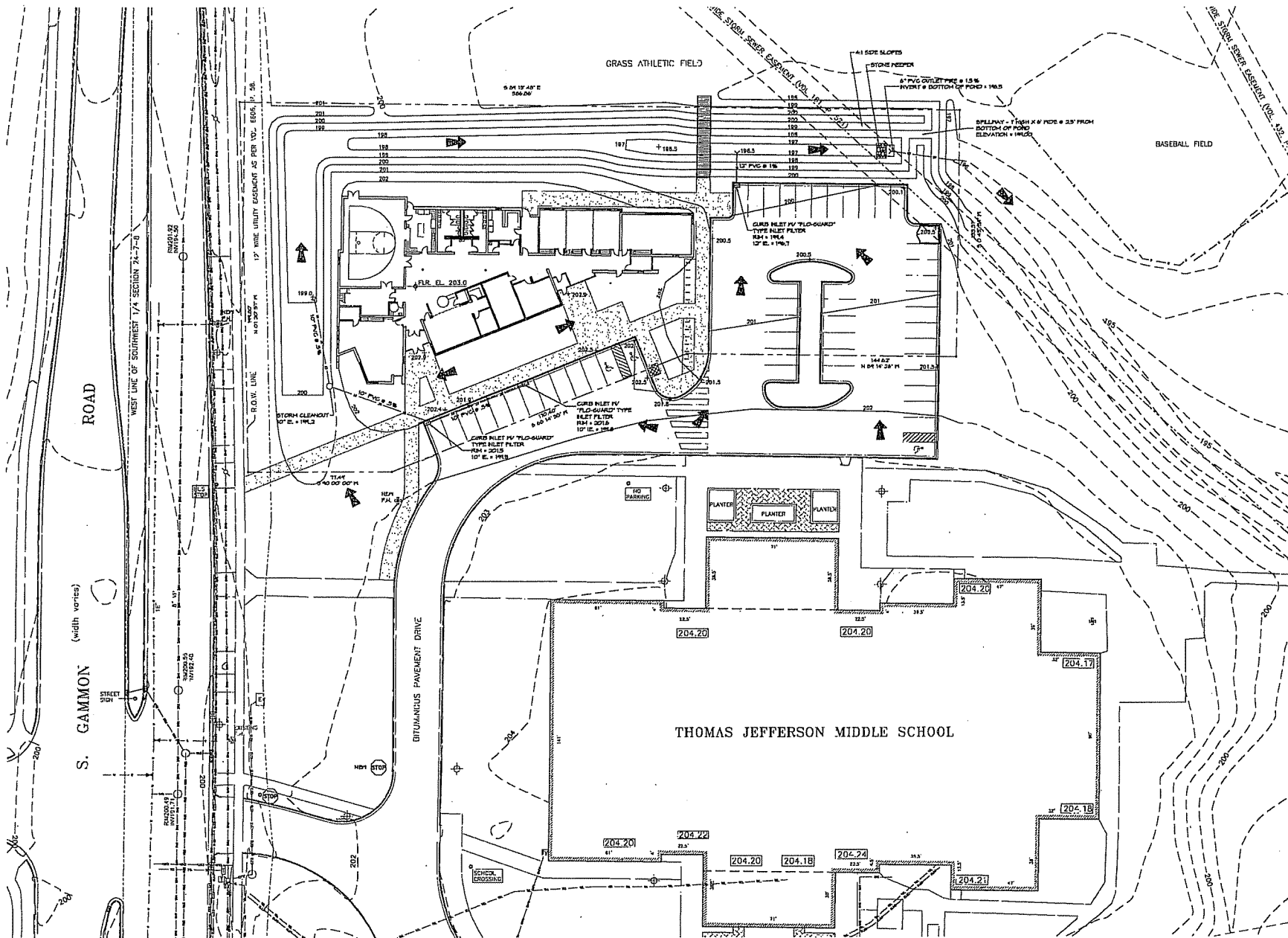
SURVEYED BY: MK, PFMC  
 DRAWN BY: MK  
 CHECKED BY:  
 APPROVED BY: D.V.B.

PREPARED FOR:  
 WEXFORD RIDGE NEIGHBORHOOD CENTER  
 7011 FLOWER LA  
 APT. A & C  
 MADISON, WI 53717

JOB NO.  
 021214A

SHEET 1 OF 1  
 231/1-7  
 FB 278/11





1  
S1.1

STORM WATER & GRADING PLAN  
1"=20'

Plan North



DRAINAGE PATTERN

--- EXISTING GRADES

--- NEW GRADES

201.9 + SPOT ELEVATIONS

3/21/2014

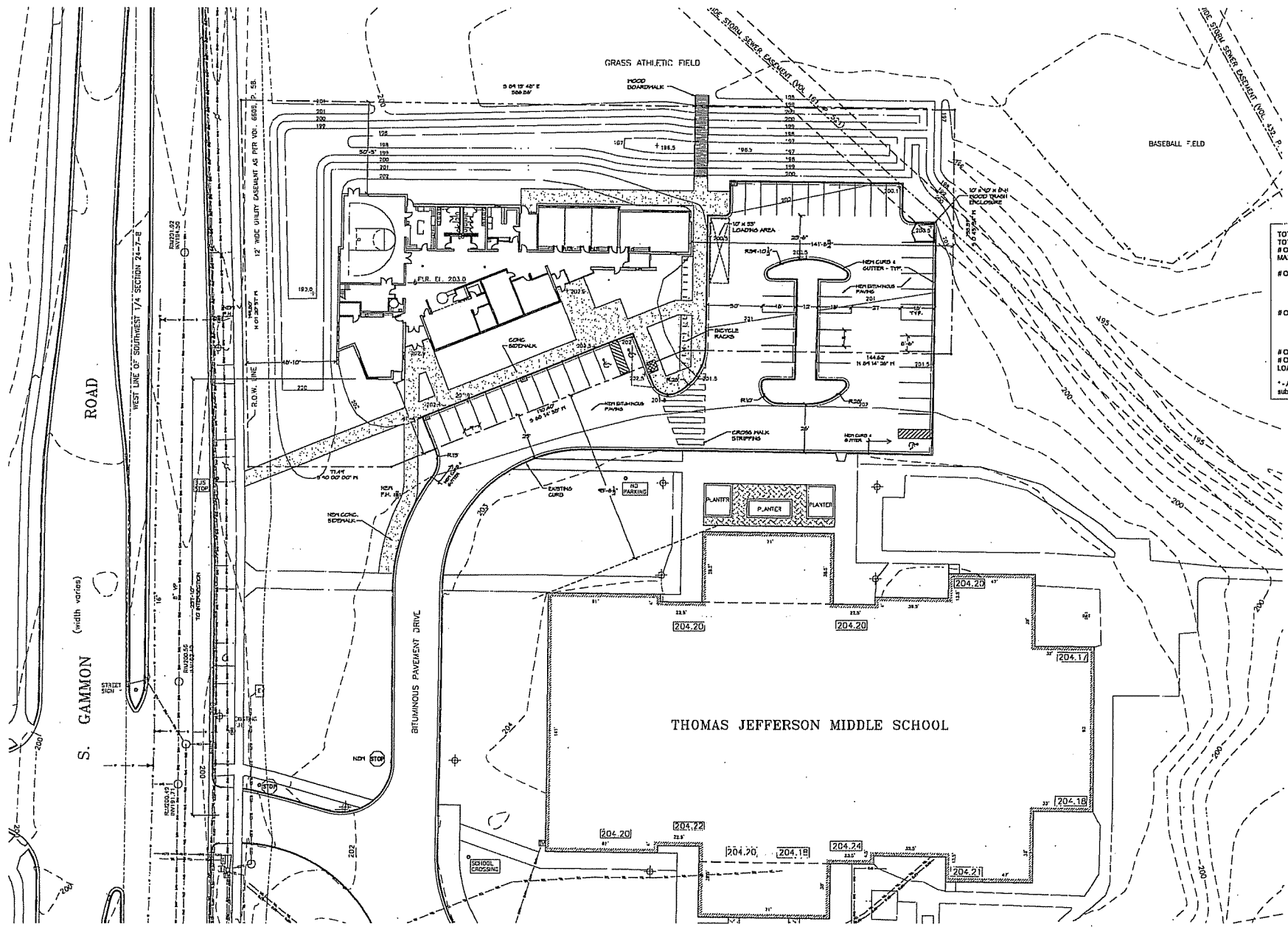
ROSEMARY BARBER, PROGRAM MANAGER

Community Education Center  
65 S. Gammon Road  
Madison, Wisconsin 53717



S1.1

STORM-WATER & GRADING PLAN



**SITE / BUILDING INFORMATION**

TOTAL SITE AREA	61,750 sq. ft. (1.41 Acres)
TOTAL BUILDING SQFT	12,240 sq. ft.
# OF STORES	(2) Existing
MAX. TOTAL OCCUPANCY	440
<b># OF PARKING STALLS:</b>	
Jefferson Middle School	9 (existing)
Community Center	40
Total	49
<b># OF PARKING STALLS REQUIRED:</b>	
Jefferson Middle School	9 (existing)
Community Center	45*
Total	54*
<b># OF HANDICAP STALLS</b>	
Jefferson Middle School	3
Community Center	20
LOADING STALLS REQ'D	1

\* - A parking reduction request of 6 stalls has been submitted and is pending.

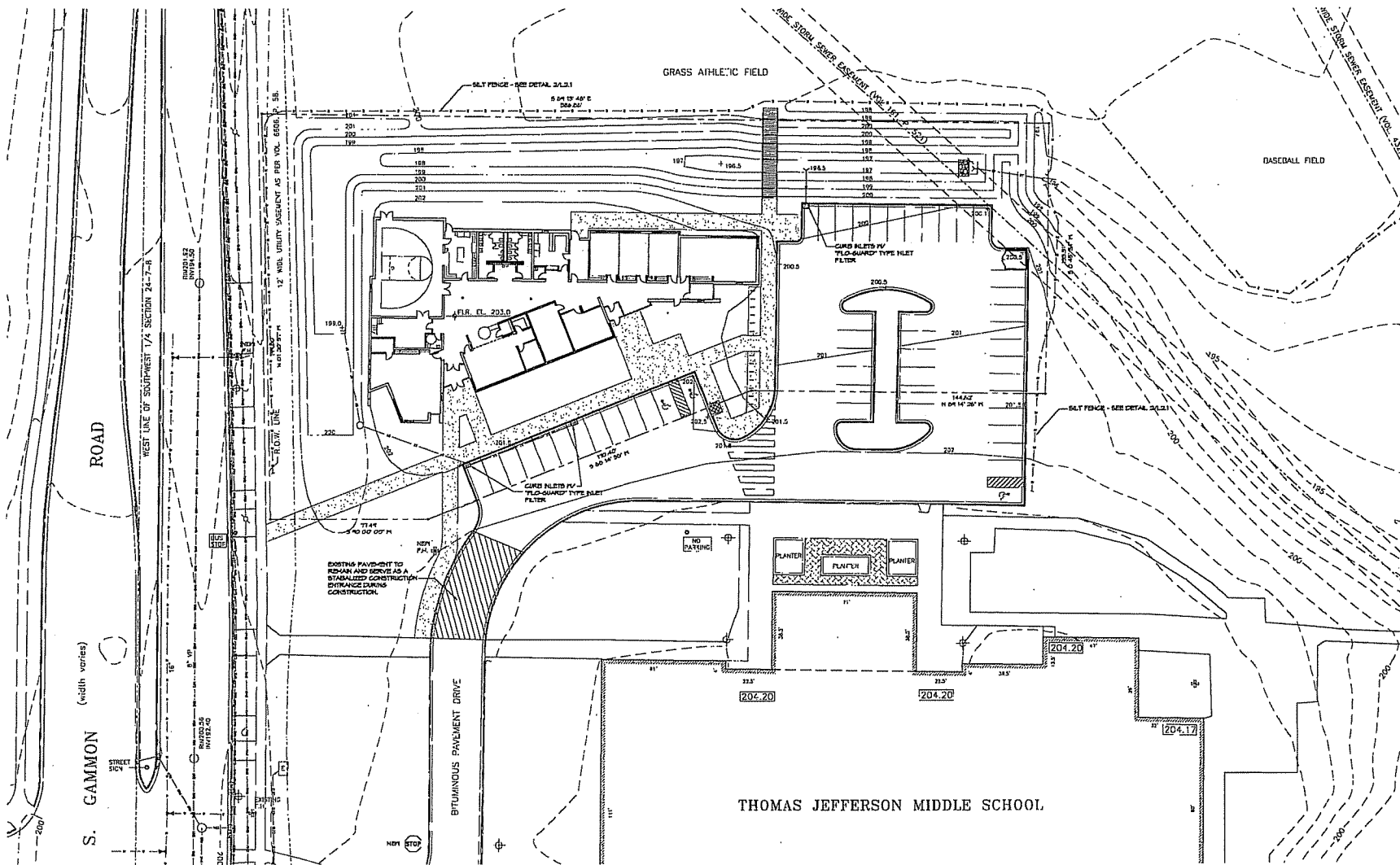
Community Education Center  
 55 S. Gammon Road  
 Madison, Wisconsin 53717

① LAYOUT PLAN  
 1" = 20'

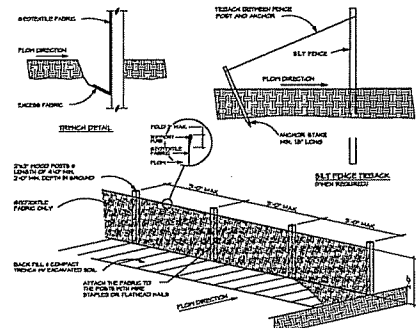
⊕ Plan North



L1.1 LAYOUT PLAN



1 EROSION CONTROL PLAN  
1" = 200'  
Plan North

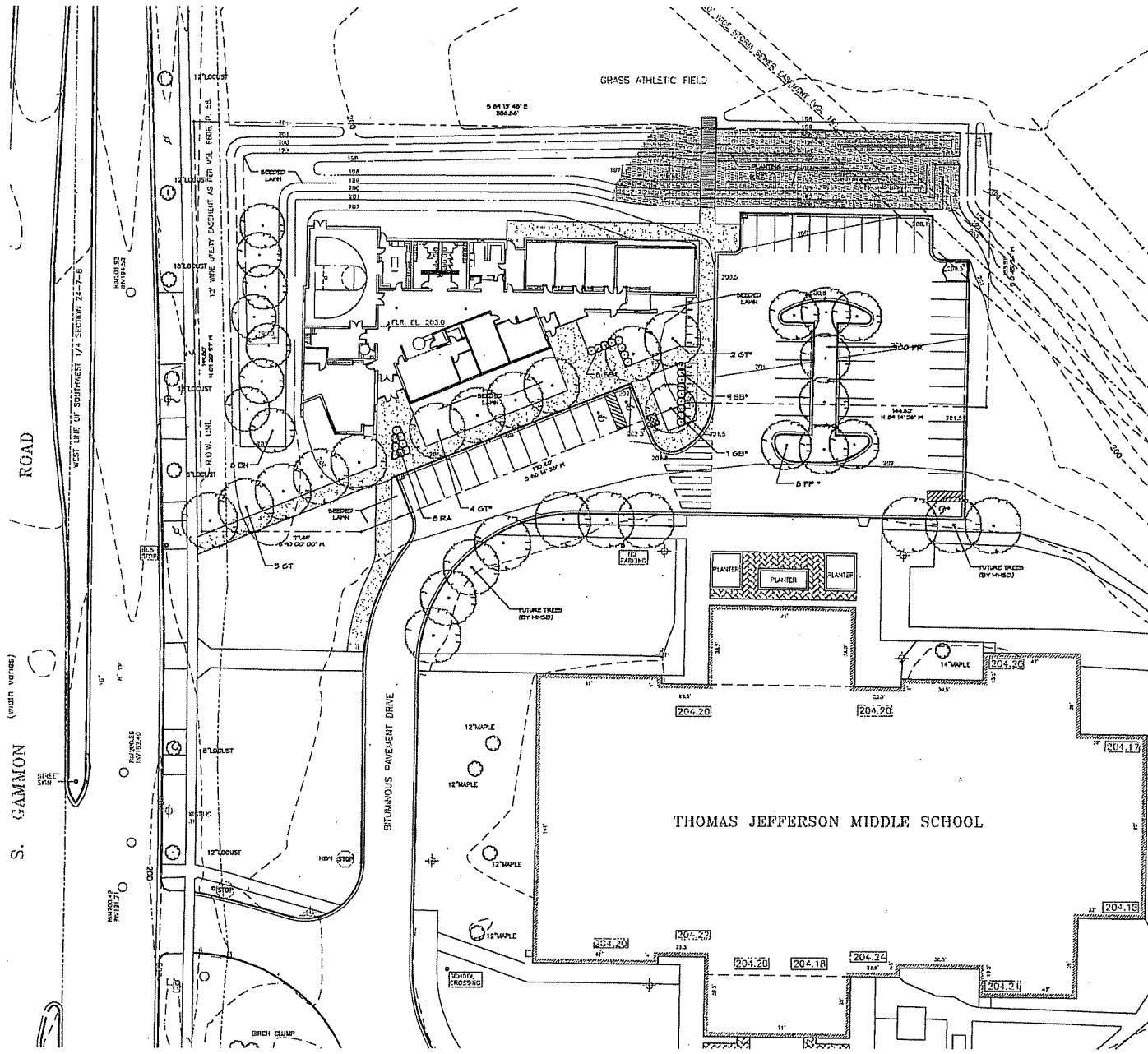


2 TYPICAL SILT FENCE DETAIL  
N.T.S.

Community Education Center  
55 S. Gammon Road  
Madison, Wisconsin 53717

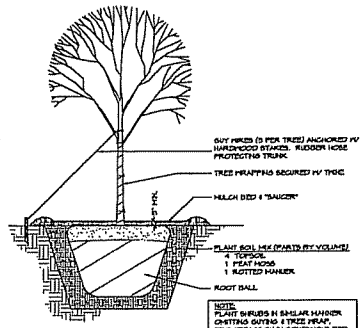


EROSION CONTROL PLAN  
L2.1



**Plant List**

Symbol	Quan.	Botanical Name	Common Name	Size	Remarks
BN	8	Betula nigra	River Birch	8-10' B&B	Multi-trunk
FP	8	Fraxinus pennsylvanica 'Cinnamom'	Common Green Ash	2-1/2' cal. B&B	
GB	1	Ginkgo biloba 'Autumn Gold'	Autumn Gold Ginkgo	3' cal. B&B	
GT	11	Gleditsia triacanthos venusta 'Savina'	Savina Thornless Honeylocust	2-1/2' cal. B&B	
PR	300	Polygonum pennsylvanicum	Dead Nettle Flowers	3"	
RA	8	Rhus aromatica 'Vino-Low'	One Low Fragrant Sumac	3 gal. pole	
SD	17	Spiraea x bumalda 'Doronicum'	Goldflame Spirea	3 gal. pole	



**PLANTING DETAIL**  
1-3.1  
N.T.A.

**Notes:**

- Plants indicated with (\*) symbol included in point list on Landscape Worksheet.
- Within construction limits, seed all areas (except Planting Job 'A' areas) with 'Medium Fines' topsoil and mix consisting of following:
  - Cracking Red Fence - 24.5%
  - Dimensional Perennial Ryegrass - 24.5%
  - Clarendon Kentucky Bluegrass - 14.7%
  - Arista Kentucky Bluegrass - 0.8%
  - Arista Kentucky Bluegrass - 4.8%
  - Cymbria Kentucky Bluegrass - 4.8%
  - Mark Kentucky Bluegrass - 4.8%
  - Stoupe Kentucky Bluegrass - 4.8%
  - Park Kentucky Bluegrass - 4.8%
- Spread topsoil to depth of 4" minimum, low grade and apply lawn seed at rate recommended by seed supplier. Mix with hay. Provide erosion control mat on slopes steeper than 1:4 and where indicated.
- Planting Job 'A': Equivalent to 'Erosion Control for Medium Soils' seed mix #20000 from Prairie Nursery, Watkiss, Wisconsin. Containing at least 18 wildflowers and 5 grasses as follows:
  - Whiteflower Dandelion, Black Eyed Susan, Blue False Indigo, Blue Vervain, Brown Eyed Susan, Canada Tick Thistle, Common Yarrow, Cowry Sunflower, Field Aster, Lancelot Coneflower, Lancelot Hymen, New England Aster, Oz Eye Sunflower, Pale Indian Plantain, Pale Purple Coneflower, Purshia Fila, Purple Coneflower, Purple Prairie Clover, Showy Sunflower, Smooth Pansy, East Goldenrod, Great Black Eyed Susan, White False Indigo, Wild Senna, and Yellow Coneflower.
  - Grasses: Annual Ryegrass, Big Bluestem, Canada Wild Rye, Indiangrass, Late Bluestem, Shikadoe Quina, and Switchgrass.
- Spread topsoil to depth of 4" minimum, low grade and apply seed mix at rate recommended by seed supplier (10 pounds per acre minimum). Mix with hay. Provide erosion control mat on slopes steeper than 1:4 and where indicated.
- Mulch all planting areas and individual trees with 3" minimum shredded bark mulch.

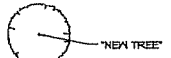
**Landscape Worksheet**

Required Trees for all planting details	
Trees Required =	4 (Minimum 2' caliper)
Trees Provided =	4 OK
Landscape Points	
Planting Points Required =	233 (for all sites)
Loading Area Points Required =	75
TOTAL Points Required =	308
Points Provided =	4 Required Trees @ 60 points = 240
	17 Additional Curbside Trees @ 35 points = 595
	17 Deciduous Shrubs @ 2 points = 34
	TOTAL = 869
	OK

1  
13.1  
LANDSCAPING PLAN  
1" = 20'



**KEY**

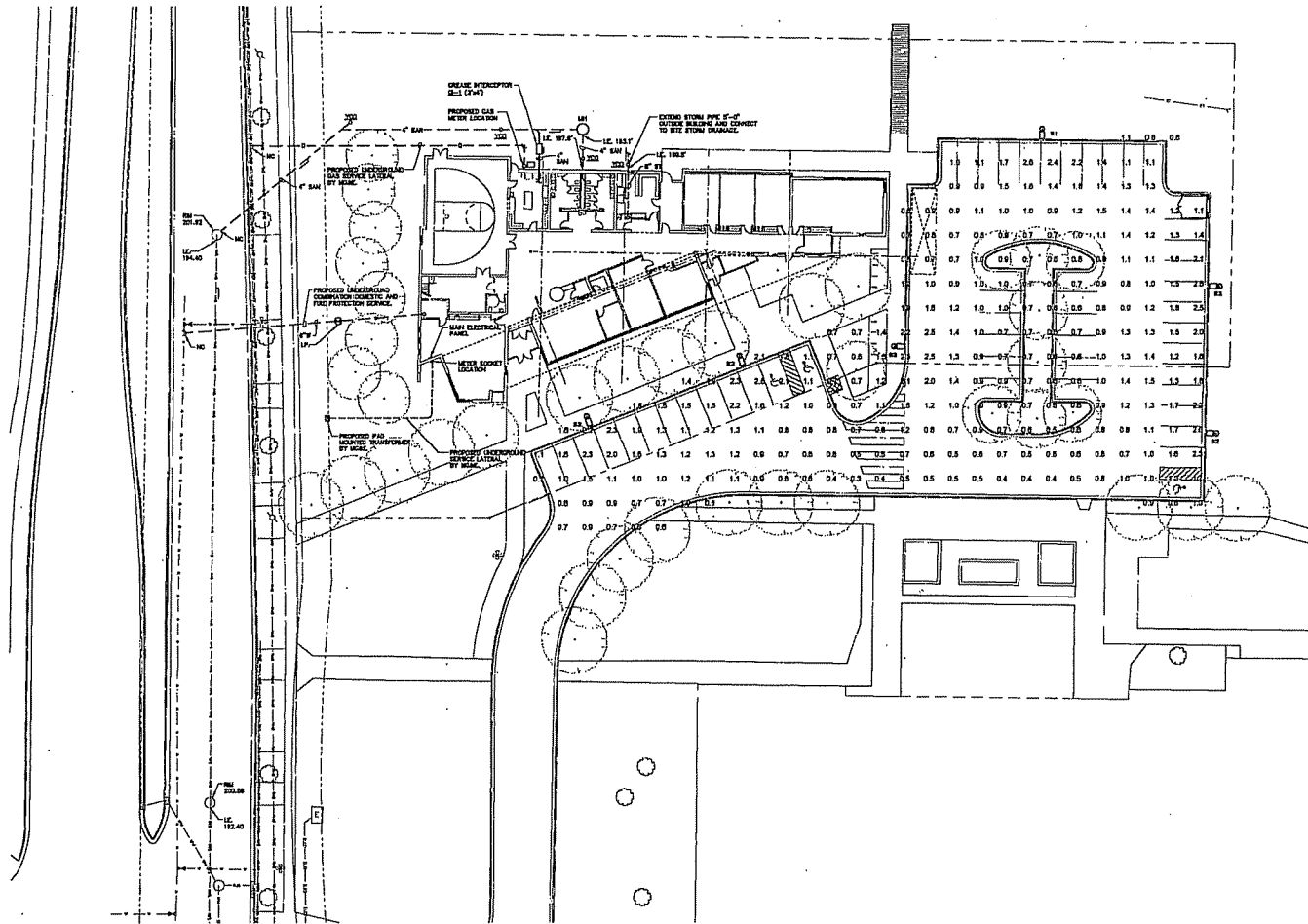


Community Education Center  
35-S. Gammon Road  
Madison, Wisconsin 53717



L3.1

LANDSCAPING PLAN



**SITE PLAN - MECHANICAL, ELECTRICAL AND PLUMBING** ①

**LUMINAIRE SCHEDULE**

MOUNTING (MTD)	LAMP TYPE	UNITS/COVER (U/C)	UNITS/COVER (U/C)
RE - RECESSED	FL - FLUORESCENT	A -	SL - ADVISIC
SP - SUSPENDED	CF - COMPACT FLUORESCENT	D -	GL - GLASS GUTTER
CL - CEILING SURFACE	INC - INCANDESCENT	C -	CL - CLEAR ALUMINUM
HL - HULL	LED - LIGHT EMITTING DIODE	PA -	PAN-GLASS
UC - UNDER CABINET	HS - HIGH PRESSURE SODIUM	FR -	FRESH
UV - UNDER VESTIBULE	MH - METAL HALIDE	TK -	TAMPONED GLASS
CV - COVER	SMH - SUPER METAL HALIDE	WA -	WALL WALKER
PL - POLE	LV - LOW VOLTAGE	NS -	NON-GLASS ACRYLIC
O - OTHER (SEE DESCRIPTION)	WH - WETHEAT WAPOR	NSH -	NON-SHOCK SPECULAR
DOOR -	LV - LOW VOLTAGE	AL -	ALUMINUM
FA - FLAT ALUMINUM	PSH - PULSE START METAL HALIDE	N -	NONE
FB - FLAT STEEL	O - OTHER (SEE DESCRIPTION)	D -	OTHER (SEE DESCRIPTION)
RA - RECESSED ALUMINUM	BALLAST (BL)	P -	PL - PLACARDITE
RS - RECESSED STEEL	ED - ELECTRONIC BALLAST		
FR - RECESSED STEEL	ML - MULTI-TAPED SWITCHES		
FAF - PAINT AFTER FABRICATION	DB - EMERGENCY BATTERY		
	HL - HORIZONTAL LEVEL		
	DBL - DOWNING BALLAST		

CATALOG NUMBER SHALL NOT BE CONSIDERED COMPLETE AND MATERIAL SHALL NOT BE ORDERED BY MANUFACTURER AND CATALOG NUMBER ONLY. THE COMPLETE DESCRIPTION AND THE SPECIFICATION SHALL BE COORDINATED WITH THE CATALOG NUMBER TO DETERMINE THE EXACT MATERIAL AND ACCESSORIES TO BE ORDERED. THE FIRST MANUFACTURER LISTED IS THE BASIS FOR DESIGN.

ALL LAMPS FOR THIS PROJECT SHALL BE FURNISHED AND INSTALLED BY THE ELECTRICAL CONTRACTOR UNLESS OTHERWISE NOTED.

REFER TO SPECIFICATION SECTION 1810 FOR LAMP AND BALLAST REQUIREMENTS, SHOP DRAWING SUBMITTAL REQUIREMENTS AND ADDITIONAL INFORMATION.

ITEM	DESCRIPTION	SIZE	MTD	LAMP TYPE	QTY	VOLTS	WATTAGE	L/V	APPROVED MANUFACTURER
01	SINGLE HEAD HALL GUTTER AREA LIGHT TYPE III DISTRIBUTION, TYPICAL, HORIZONTAL, RECESSED, 22" H	22" H	PL	FL	(1)	120V	40W	0	LITHONIA AERIS 40 250M 500 1200/234/10H
02	SINGLE HEAD HALL GUTTER AREA LIGHT TYPE IV WIDE DISTRIBUTION AND INTERNAL HOUSE BIRD SHIELD, 22 FOOT MOUNTING HEIGHT	22" H	PL	FL	(1)	120V	40W	0	LITHONIA AERIS 40 250M 500 1200/234/10H

Minimum Reinforcement Limits as Prescribed  
Average = Low  
Maximum = High  
Minimum to Maximum = 8:1

**MECHANICAL SYMBOL LIST**

SYMBOL	DESCRIPTION
—	MECH
—	SERVICE WATER - POTABLE
—	NATURAL GAS
—	SAFETY DRAINAGE
—	STORM DRAINAGE (DOOF SOLAKE FOOTING)
—	PITCH PIPE IN DIRECTION
—	DIRECTION OF FLOW IN PIPE
—	NEW CONNECTOR
—	VOID CLEARANCE
—	INVERT ELEVATION OVER INTERFERENCE (EAO)
—	MANHOLE
—	ELECTRICAL CONTRACTOR
—	FIRE PROTECTION CONTRACTOR
—	GENERAL CONTRACTOR
—	HEATING CONTRACTOR
—	PLUMBING CONTRACTOR
—	REGULATOR POST

2017.12.08  
Submitted by: [Name], Civil/Structural Use K (CSM)

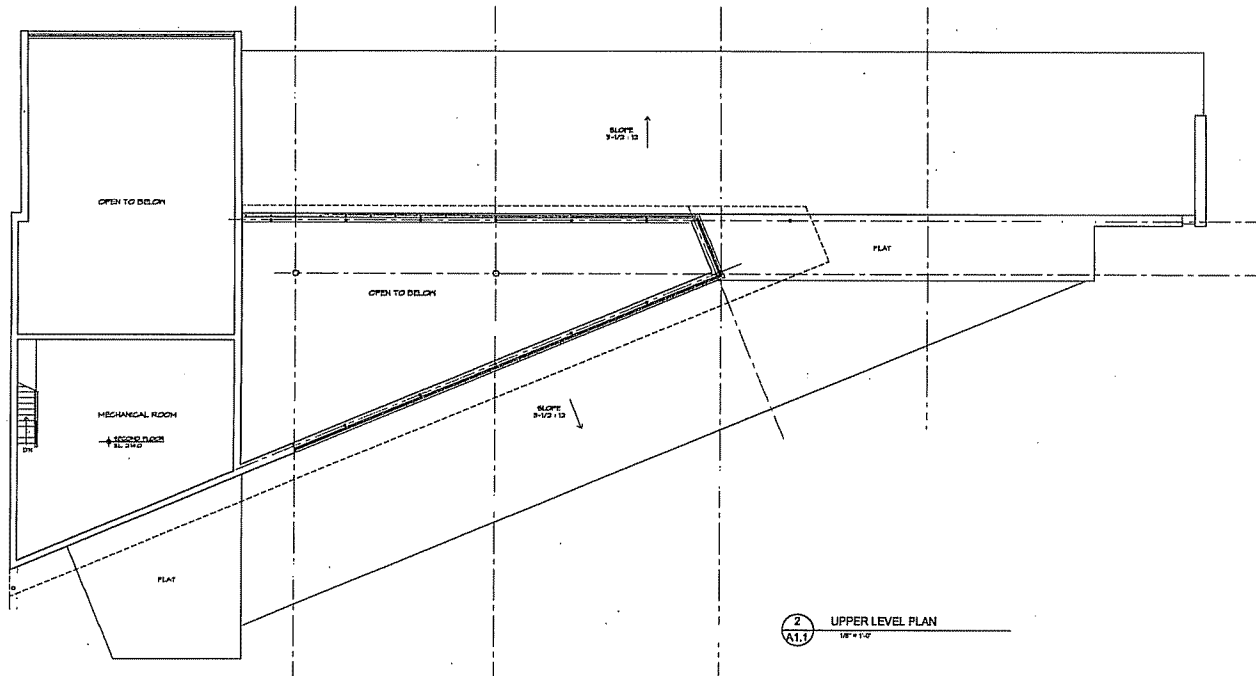
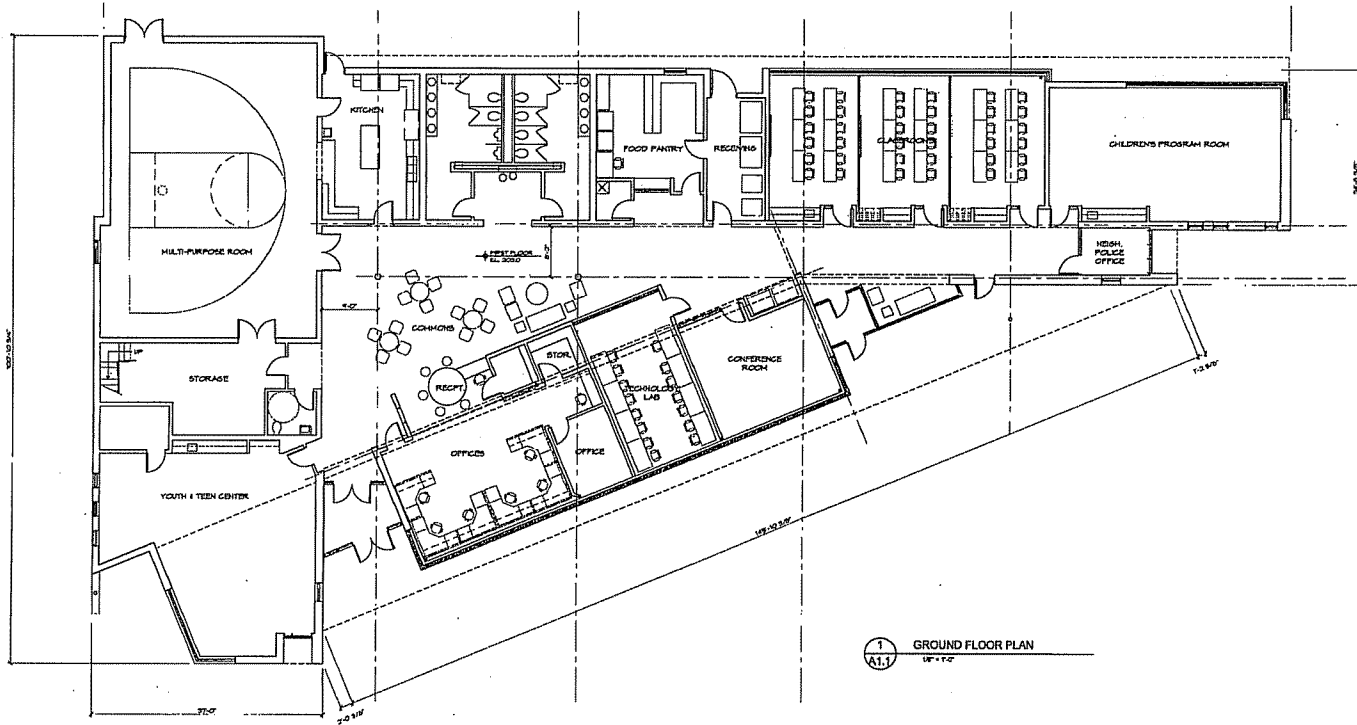
Community Education Center  
155 S. CHANDLER BLVD  
MIDLAND, TEXAS 79701-5372



**KW** K&W ARCHITECTURE  
155 S. CHANDLER BLVD  
MIDLAND, TEXAS 79701-5372  
PH: 409.709.1111  
WWW.KWARCHITECTURE.COM

**MEP1.0** MECHANICAL, ELECTRICAL AND PLUMBING SITE PLAN

REFERENCE SCALE IN FEET  
1" = 10'-0"



JAN 18, 2004

COMMUNITY EDUCATION CENTER

Community Education Center  
 85 S. Gammon Rd.  
 Madison, Wisconsin 53717

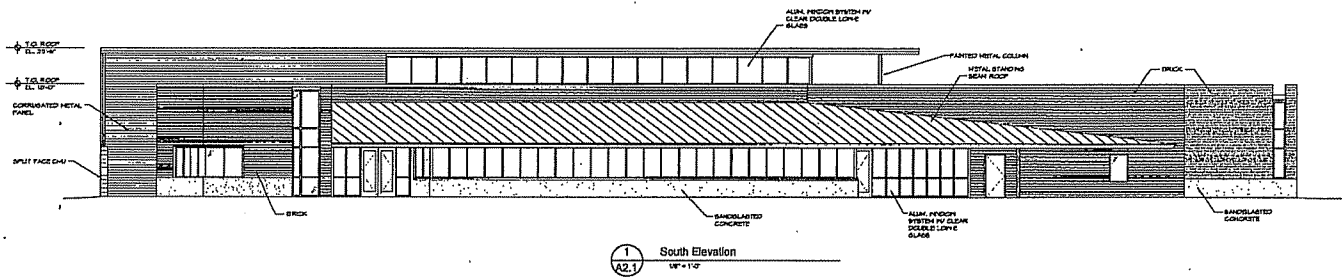
VD-18



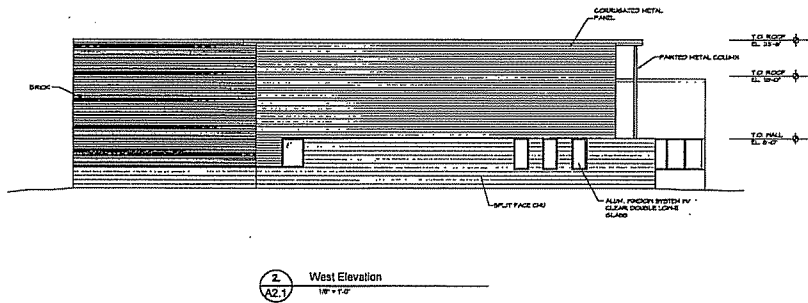
A1.1

FLOOR PLANS

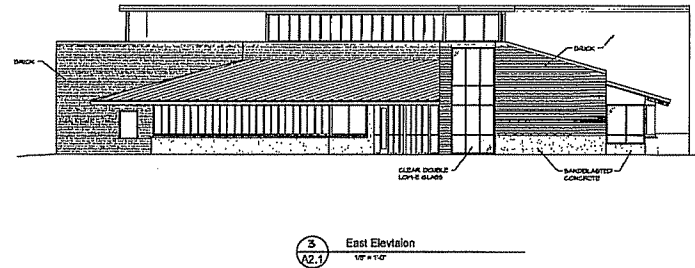




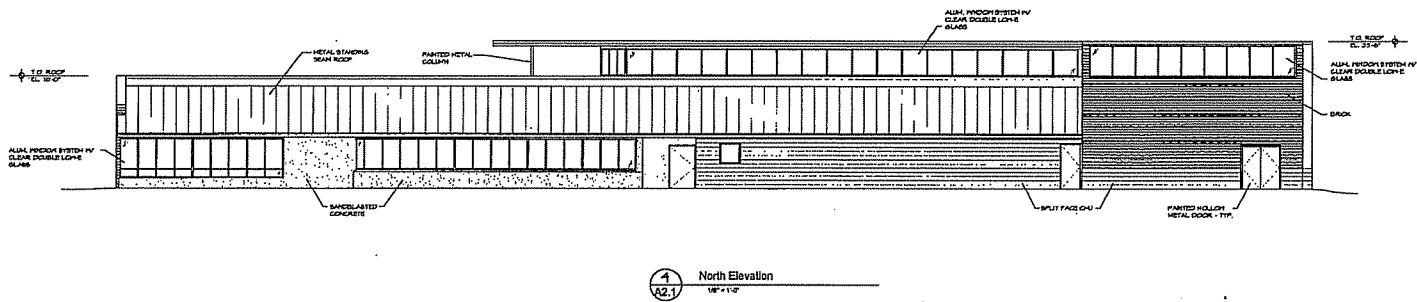
1 South Elevation  
1/8" = 1'-0"



2 West Elevation  
1/8" = 1'-0"



3 East Elevation  
1/8" = 1'-0"



4 North Elevation  
1/8" = 1'-0"

NOV 11 2015  
JULIENNE TRAVINS, GRAPHIC DESIGNER

Community Education Center  
35 S. Gannon Rd.  
Madison, Wisconsin 53717



A2.1 ELEVATIONS