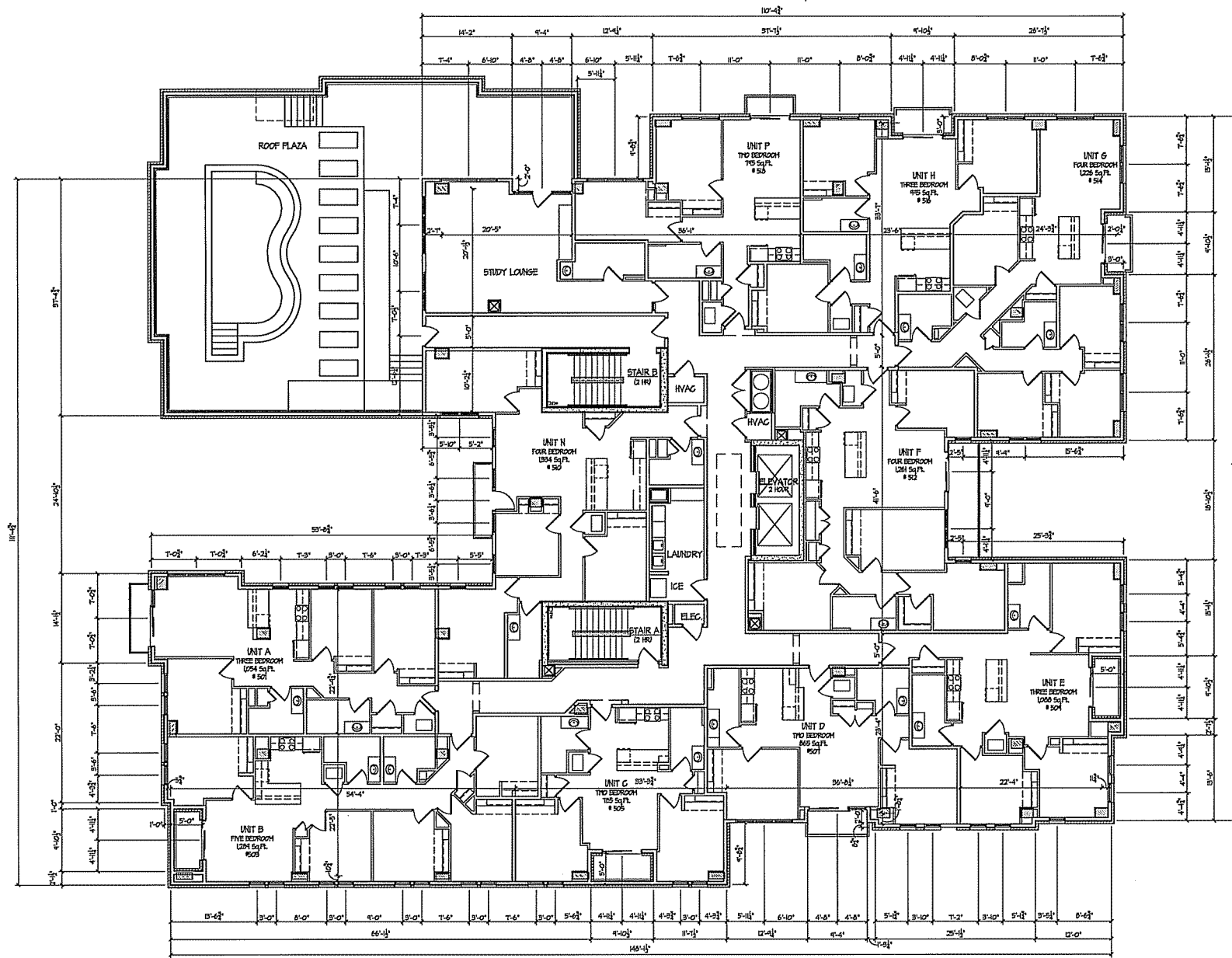


Consultant

Notes
 SEE A-10 FOR TYPICAL NOTES



Revisions
 Issued For Preliminary Bidding: March 14, 2013
 Contract Set: July 1, 2013
 Issued for Plan Review: August 2, 2013
 Re-issued for Plan Review: August 14, 2013
 Issued for Construction: September 9, 2013
 September 25, 2013

Project Title
**The Waterfront
 Apartments**

633 N. Henry Street
 Madison, WI
 Drawing Title
Fifth Floor Plan

Project No. **0804** Drawing No. **A-1.5**

FIFTH FLOOR PLAN
 1/8" = 1'-0"



This document contains confidential and proprietary information of Knothe & Bruce Architects. It is to be used only for the project and site specifically identified herein. No part of this document may be reproduced, stored in a retrieval system, or transmitted in any form or by any means, electronic, mechanical, photocopying, recording, or by any information storage and retrieval system, without the prior written consent of Knothe & Bruce Architects. Knothe & Bruce Architects is a Limited Liability Corporation of Wisconsin.

Consultant _____

Notes _____



1 ELEVATION ALONG IOTA COURT
1/8" = 1'-0"



2 ELEVATION ALONG HENRY STREET
1/8" = 1'-0"

Revisions
Issued For Preliminary Bidding: March 14, 2013
Contract Set: July 1, 2013
Issued for Plan Review: August 2, 2013
Re-issued for Plan Review: August 14, 2013
Issued for Construction: September 3, 2013
September 26, 2013

Project Title
**The Waterfront
Apartments**

633 N. Henry Street
Madison, WI
Drawing Title
Elevations

Project No. _____ Drawing No. _____

0804 A-2.1

This document contains confidential or proprietary information of Knothe & Bruce Architects. It is to be used only for the project and location specified. It is not to be distributed, copied, or otherwise used in whole or in part, except as specifically authorized by Knothe & Bruce Architects. Knothe & Bruce Architects is a Limited Liability Corporation of Wisconsin.