

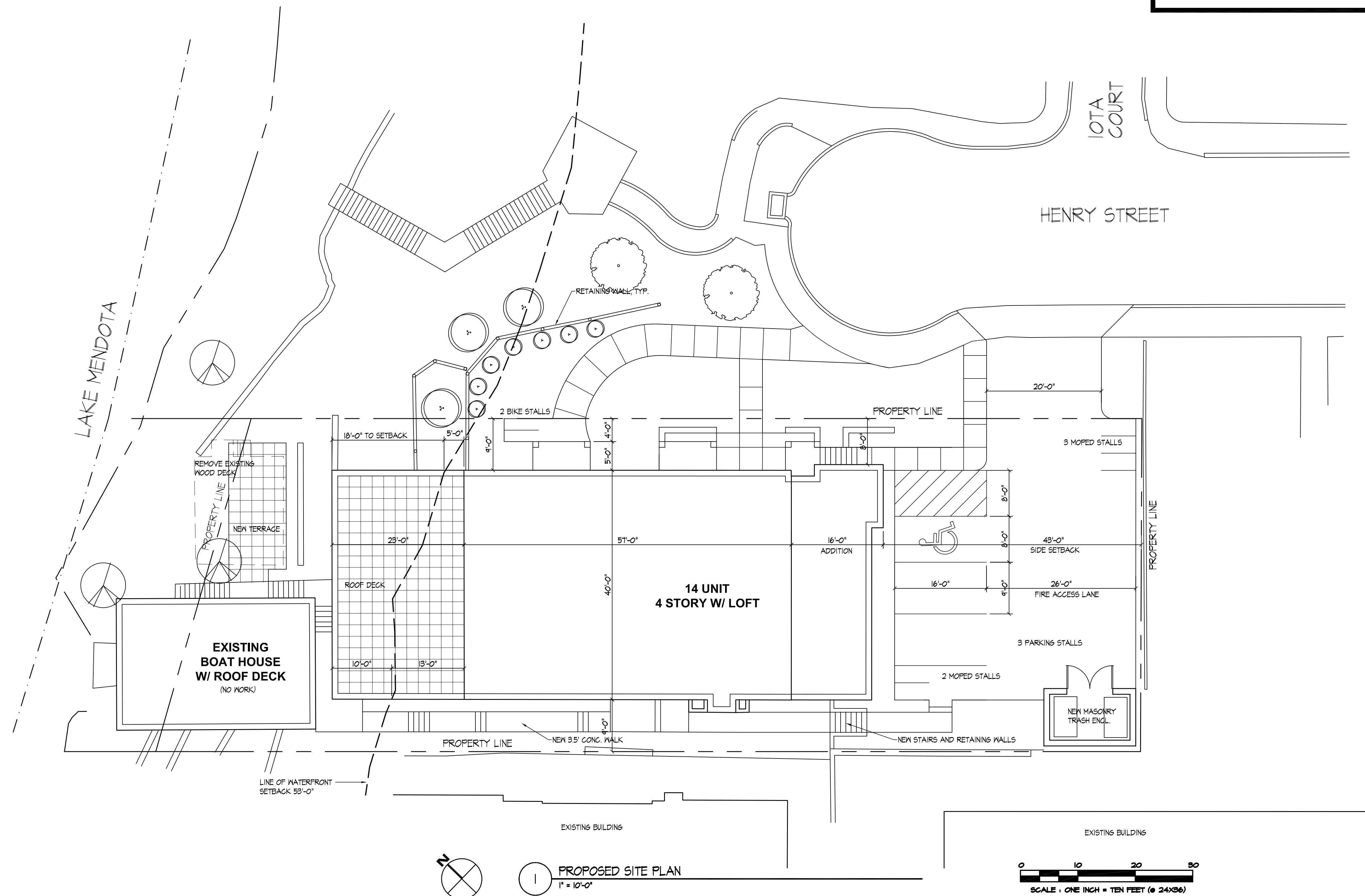
SHEET INDEX

- C-1.0 PROPOSED SITE PLAN
- C-1.1 EXISTING SITE PLAN
- C-2.1 GRADING PLAN
- C-4.1 LANDSCAPE PLAN

- A-1.0 EXISTING GROUND FLOOR PLAN
- A-1.1 EXISTING FIRST FLOOR PLAN
- A-1.2 EXISTING SECOND FLOOR PLAN
- A-1.3 EXISTING THIRD FLOOR PLAN

- A-1.4 PROPOSED LOWER FLOOR PLAN
- A-1.5 PROPOSED FIRST FLOOR PLAN
- A-1.6 PROPOSED SECOND FLOOR PLAN
- A-1.7 PROPOSED THIRD FLOOR PLAN
- A-1.8 PROPOSED FOURTH FLOOR PLAN
- A-1.9 PROPOSED LOFT FLOOR PLAN

- A-2.1 EXISTING ELEVATIONS
- A-2.2 PROPOSED ELEVATIONS



Revisions
 DECEMBER 21, 2010 - ZONING BOARD OF APPEALS
 JANUARY 19, 2011 - ALTERATION TO COND. USE SUBMITTAL

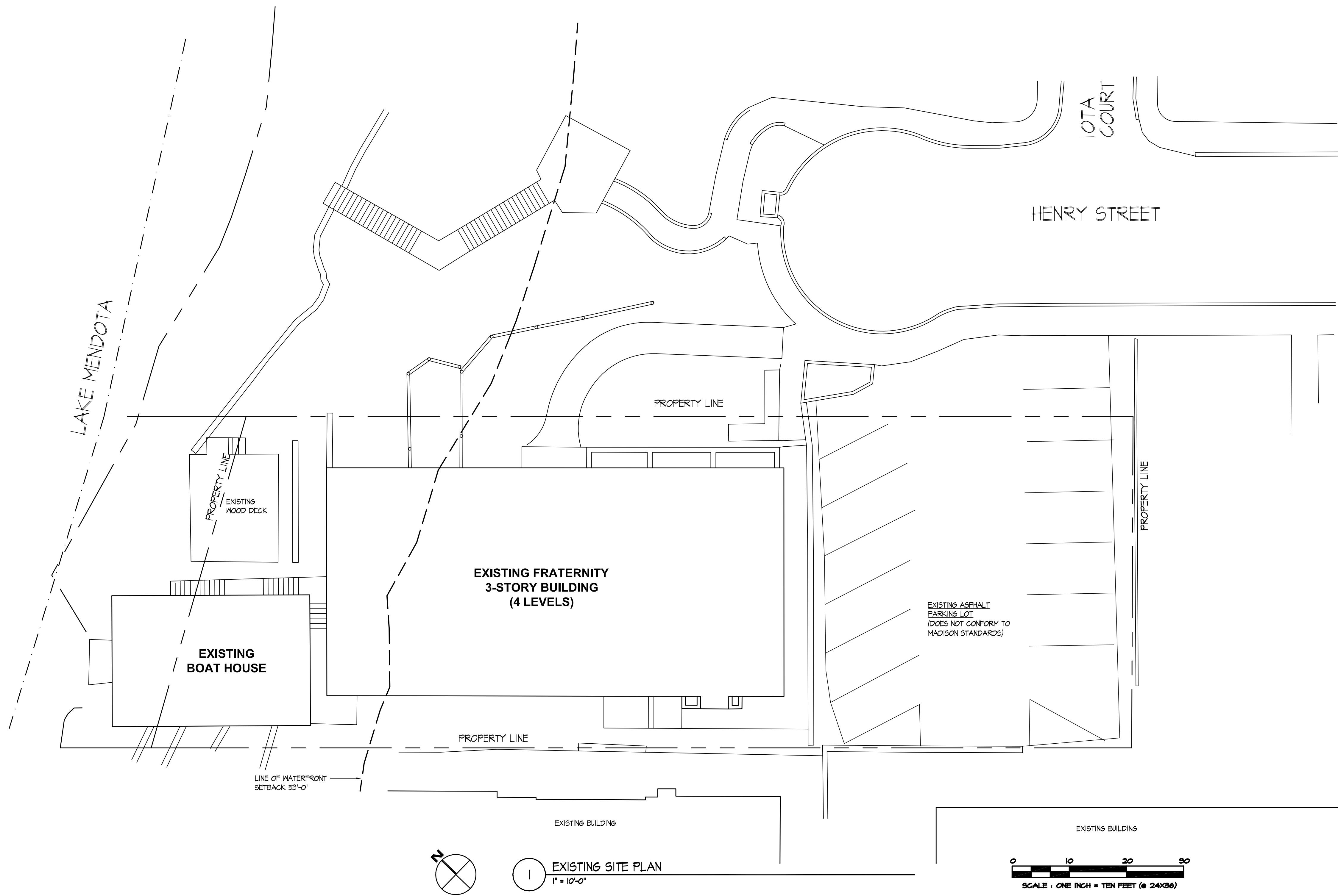
Project Title
640 N. Henry Street

Drawing Title
Proposed Site Plan

Project No. Drawing No.

1024 C-1.0

The document contains confidential or proprietary information of Knothe & Bruce Architects. Neither the document nor the information herein is to be reproduced, distributed, used, or disclosed, either in whole or in part, except as specifically authorized by Knothe & Bruce Architects. Knothe & Bruce Architects is a Limited Liability Company of Wisconsin.



Revisions
 DECEMBER 21, 2010 - ZONING BOARD OF APPEALS
 JANUARY 19, 2011 - ALTERATION TO COND. USE SUBMITTAL

Project Title
640 N. Henry Street

Drawing Title
Existing Site Plan

Project No. Drawing No.

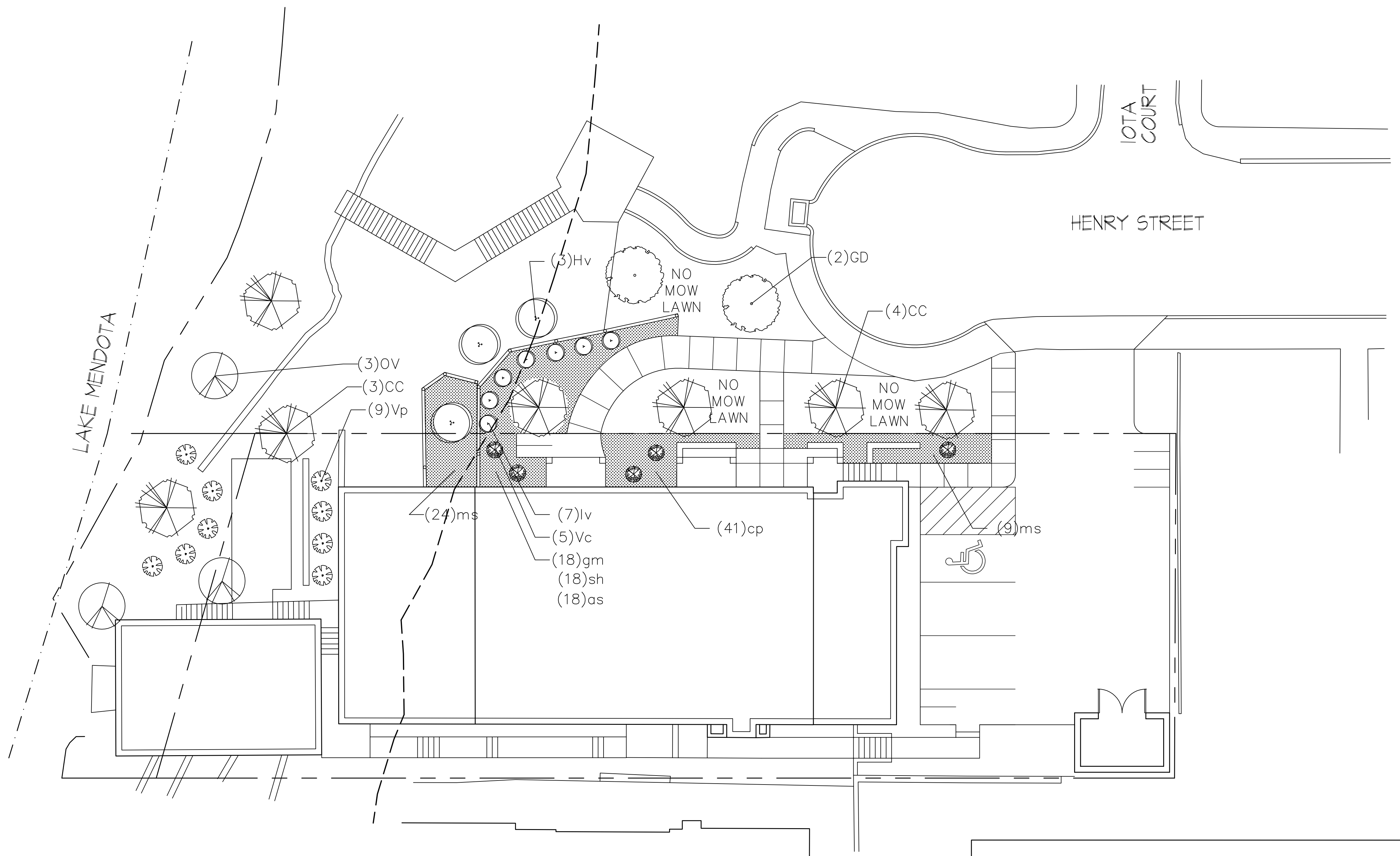
1024 C-1.1

The document contains confidential or proprietary information of Knothe & Bruce Architects. Neither the document nor the information herein is to be reproduced, distributed, used, or disclosed, in whole or in part, except as specifically authorized by Knothe & Bruce Architects. Knothe & Bruce Architects is a Limited Liability Company of Wisconsin.

PLANT LIST

640 N. Henry Street

KEY	SPECIES NAME	COMMON NAME	POINTS	QUAN:	TOTAL PTS
CANOPY TREES:					
GD	Gymnocladus Dioica	Kentucky Coffee Tree	35	2	70
ORNAMENTAL TREES:					
CC	Carpinus Caroliniana	American Hornbeam	15	6	90
OV	Ostrya Virginiana	Ironwood Tree	15	3	45
DECIDUOUS SHRUBS:					
Hv	Hamamelis Virginiana	Common Witchhazel	2	7	14
Iv	Ilex Verticillata	Common Winterberry	2	7	14
Vc	Viburnum Cassinoides	Witherod Vibernum	2	5	10
Vp	Viburnum Prunifolium	Blackhaw Vibernum	2	9	18
					261
PERENNIALS					
as	Allium Cernum	Nodding Pink Onion		18	
cp	Carex Pennsylvanica	Pennsylvania Sage		41	
gm	Geranium Maculatum	Wild Geranium		18	
ms	Malleuccia Struthiopteris	Ostrich Fern		33	
sh	Sporobulus Heteropsis	Prairie Dropseed		18	



Revisions
DECEMBER 21, 2010 - ZONING BOARD OF APPEALS
JANUARY 14, 2011 - ALTERATION TO COND. USE SUBMITTAL

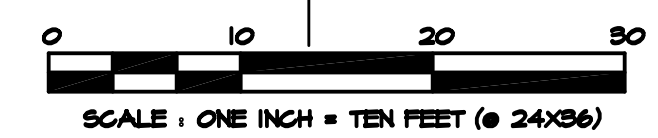
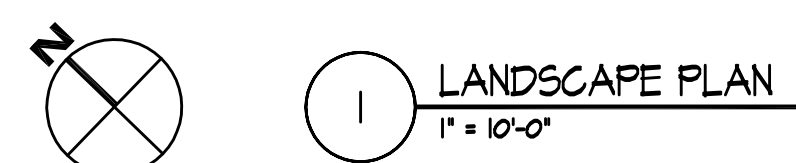
Project Title
640 N. Henry Street

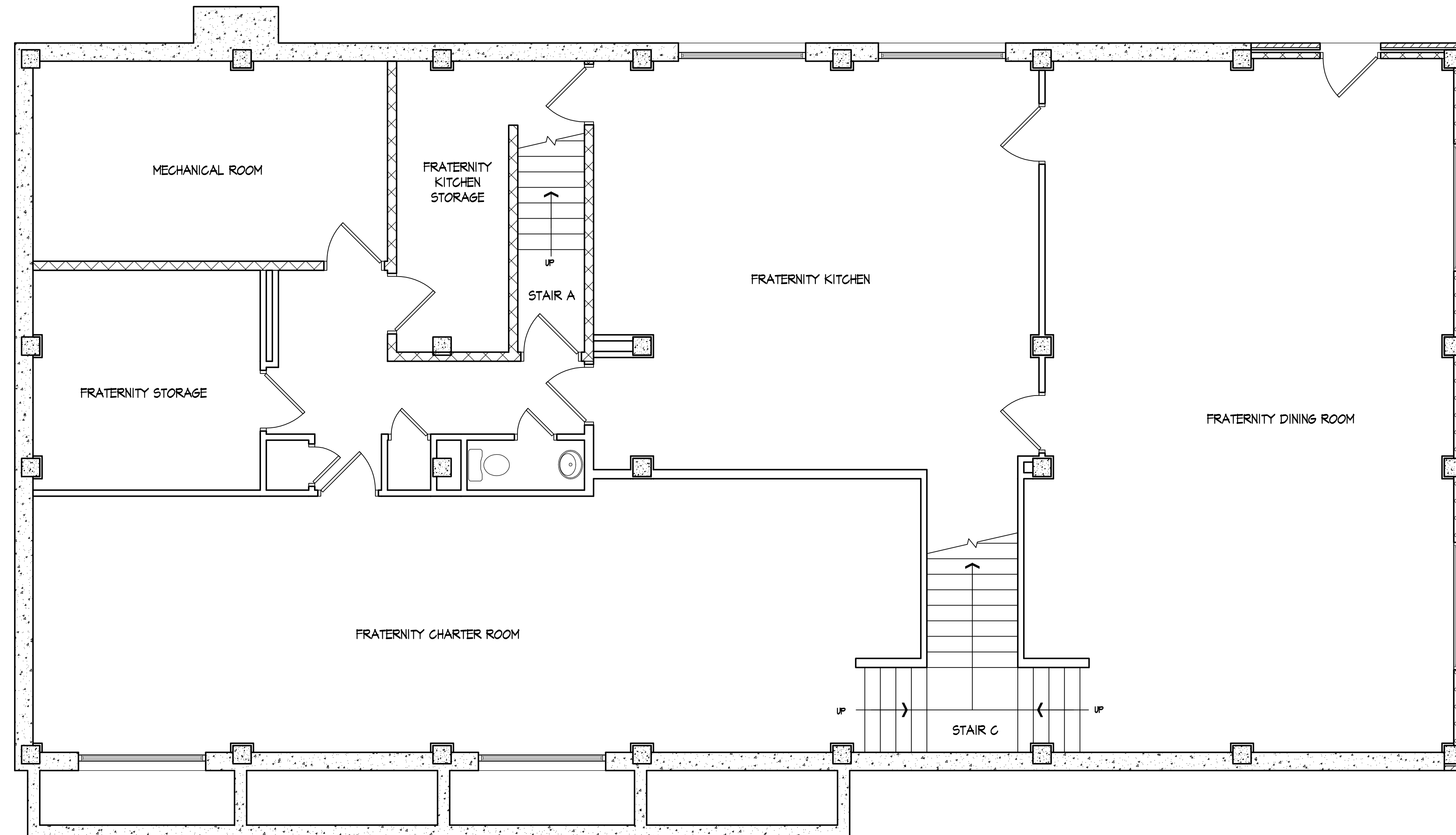
Drawing Title
Landscape Plan

Project No. Drawing No.

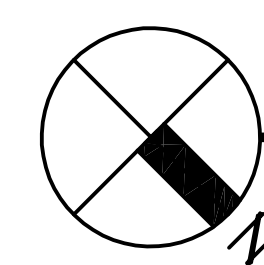
1024 C-4.1

The document contains confidential or proprietary information of Knothe & Bruce Architects. Neither the document nor the information herein is to be reproduced, distributed, used, or disclosed, either in whole or in part, except as specifically authorized by Knothe & Bruce Architects. Knothe & Bruce Architects is a Limited Liability Company of Wisconsin.





Revisions
DECEMBER 21, 2010 - ZONING BOARD OF APPEALS



EXISTING GROUND FLOOR PLAN

1/8" = 1'-0"

Total Floor Area = 3,200 sq.ft.

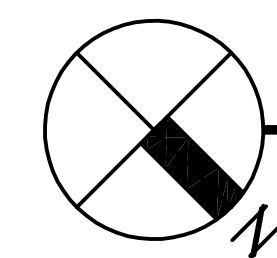
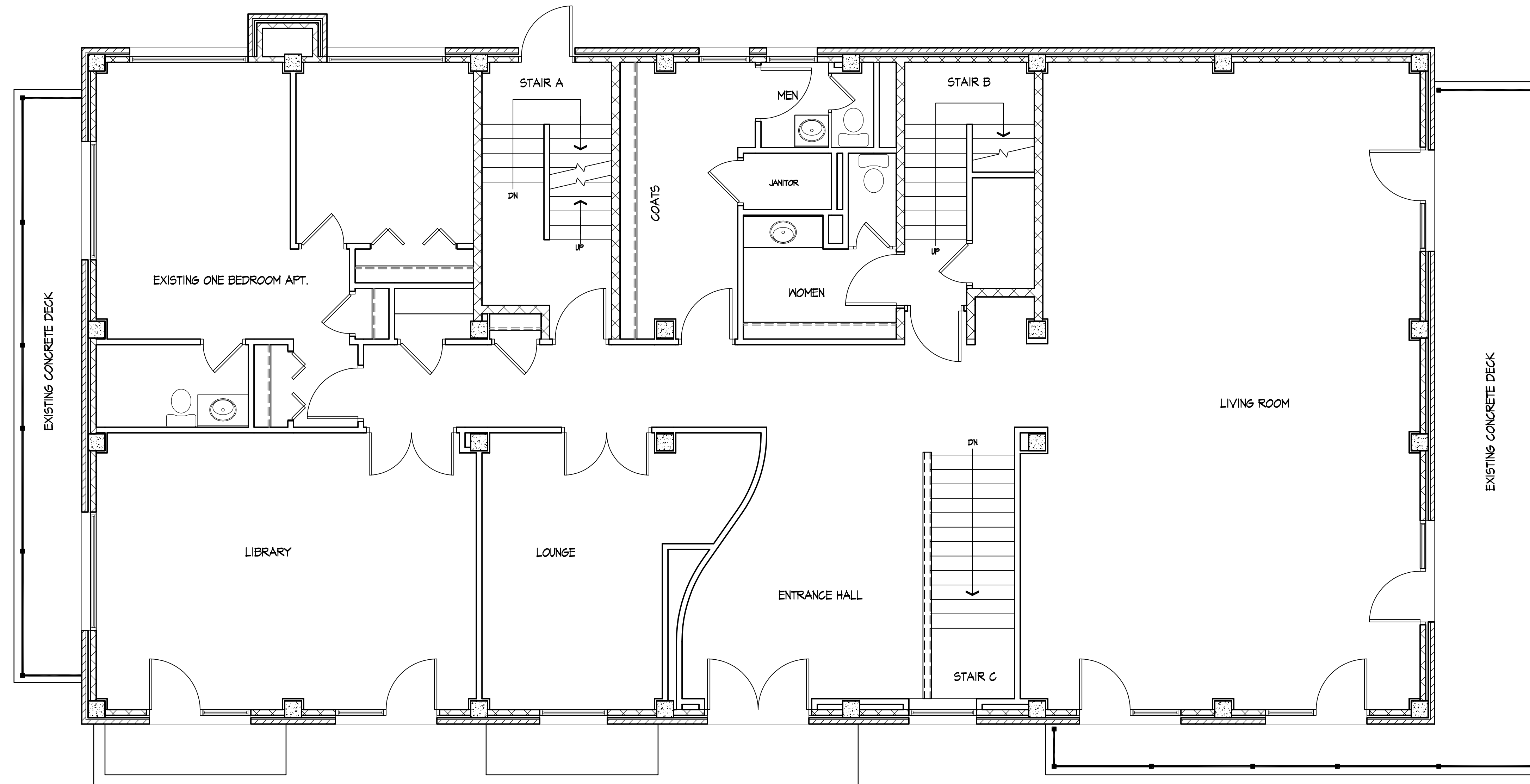
Project Title
640 N. Henry Street

Drawing Title
**Existing
Ground Floor Plan**

Project No. Drawing No.

1024 A-1.0

This document contains confidential or proprietary information of Knothe & Bruce Architects. Neither the document nor the information herein is to be reproduced, distributed, used, or disclosed, either in whole or in part, except as specifically authorized by Knothe & Bruce Architects. Knothe & Bruce Architects is a Limited Liability Company of Wisconsin.



EXISTING FIRST FLOOR PLAN

1/8" = 1'-0"

Total Floor Area = 3,200 sq.ft.

Revisions
DECEMBER 21, 2010 - ZONING BOARD OF APPEALS

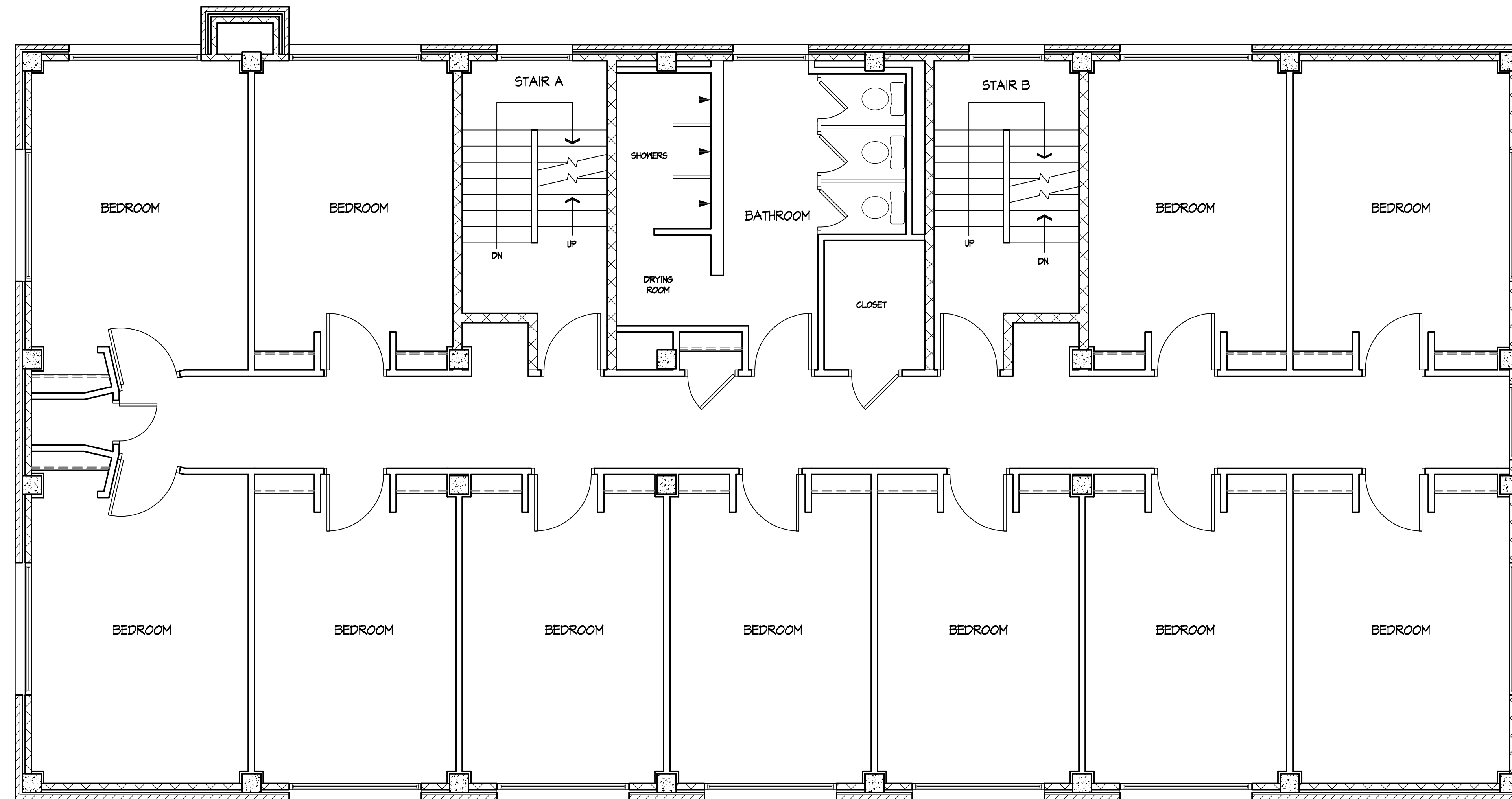
Project Title
640 N. Henry Street

Drawing Title
**Existing
First Floor Plan**

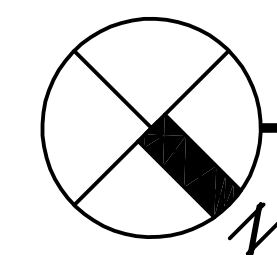
Project No. Drawing No.

1024 **A-1.1**

This document contains confidential or proprietary information of Knothe & Bruce Architects. Neither the document nor the information herein is to be reproduced, distributed, used, or disclosed, either in whole or in part, except as specifically authorized by Knothe & Bruce Architects. Knothe & Bruce Architects is a Limited Liability Company of Wisconsin.



Revisions
DECEMBER 21, 2010 - ZONING BOARD OF APPEALS



EXISTING SECOND FLOOR PLAN

1/8" = 1'-0"

Total Floor Area = 3,200 sq.ft.

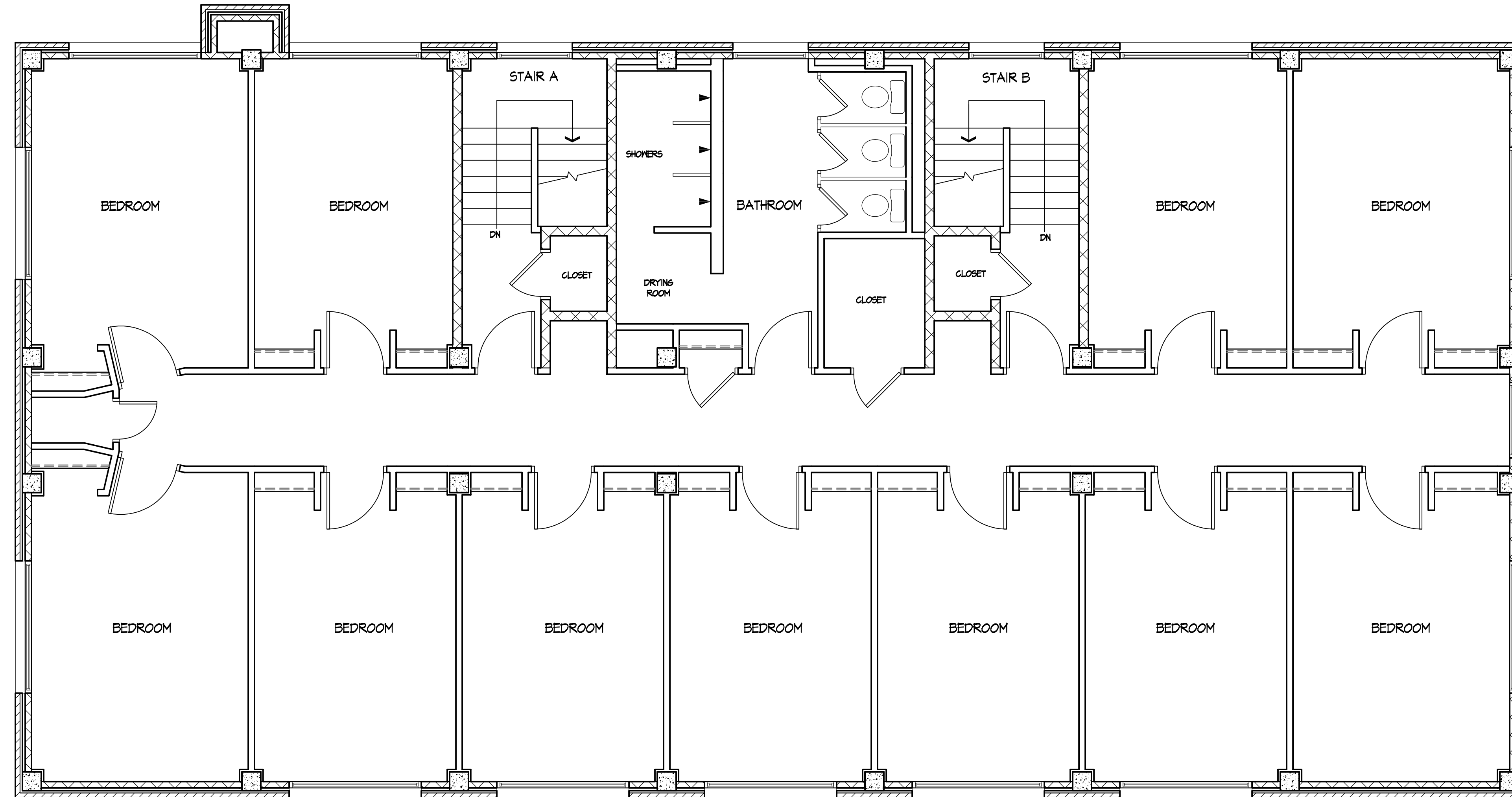
Project Title
640 N. Henry Street

Drawing Title
**Existing
Second Floor Plan**

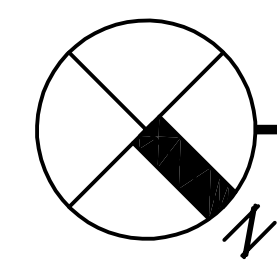
Project No. Drawing No.

1024 A-1.2

This document contains confidential or proprietary information of Knothe & Bruce Architects. Neither the document nor the information herein is to be reproduced, distributed, used, or disclosed, either in whole or in part, except as specifically authorized by Knothe & Bruce Architects. Knothe & Bruce Architects is a Limited Liability Company of Wisconsin.



Revisions
DECEMBER 21, 2010 - ZONING BOARD OF APPEALS



EXISTING THIRD FLOOR PLAN

1/8" = 1'-0"

Total Floor Area = 3,200 sq.ft.

Project Title
640 N. Henry Street

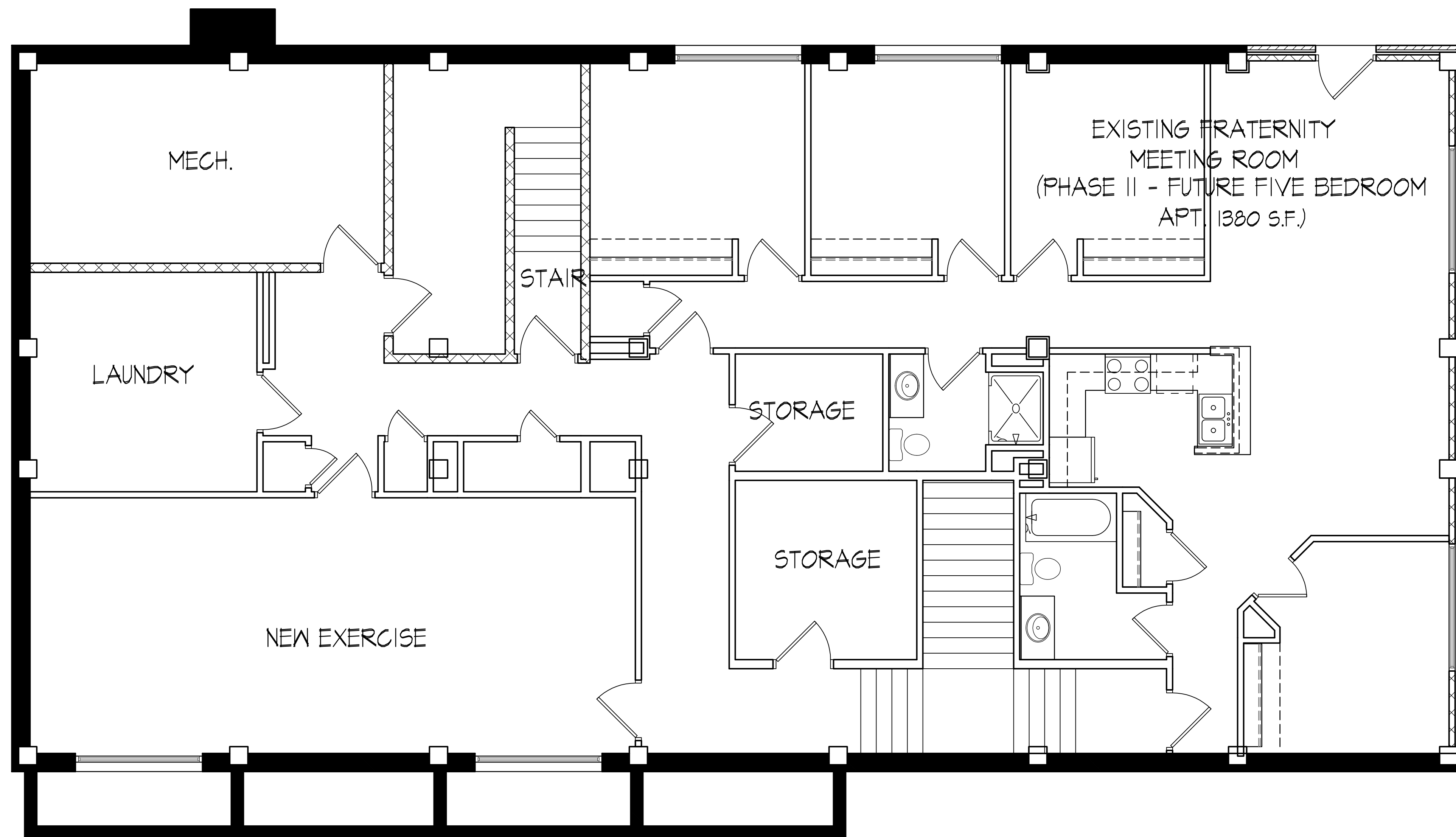
Drawing Title
**Existing
Third Floor Plan**

Project No.

Drawing No.

1024

A-1.3



Revisions
DECEMBER 21, 2010 - ZONING BOARD OF APPEALS
JANUARY 14, 2011 - ALTERATION TO COND. USE SUBMITTAL

Project Title
640 N. Henry Street

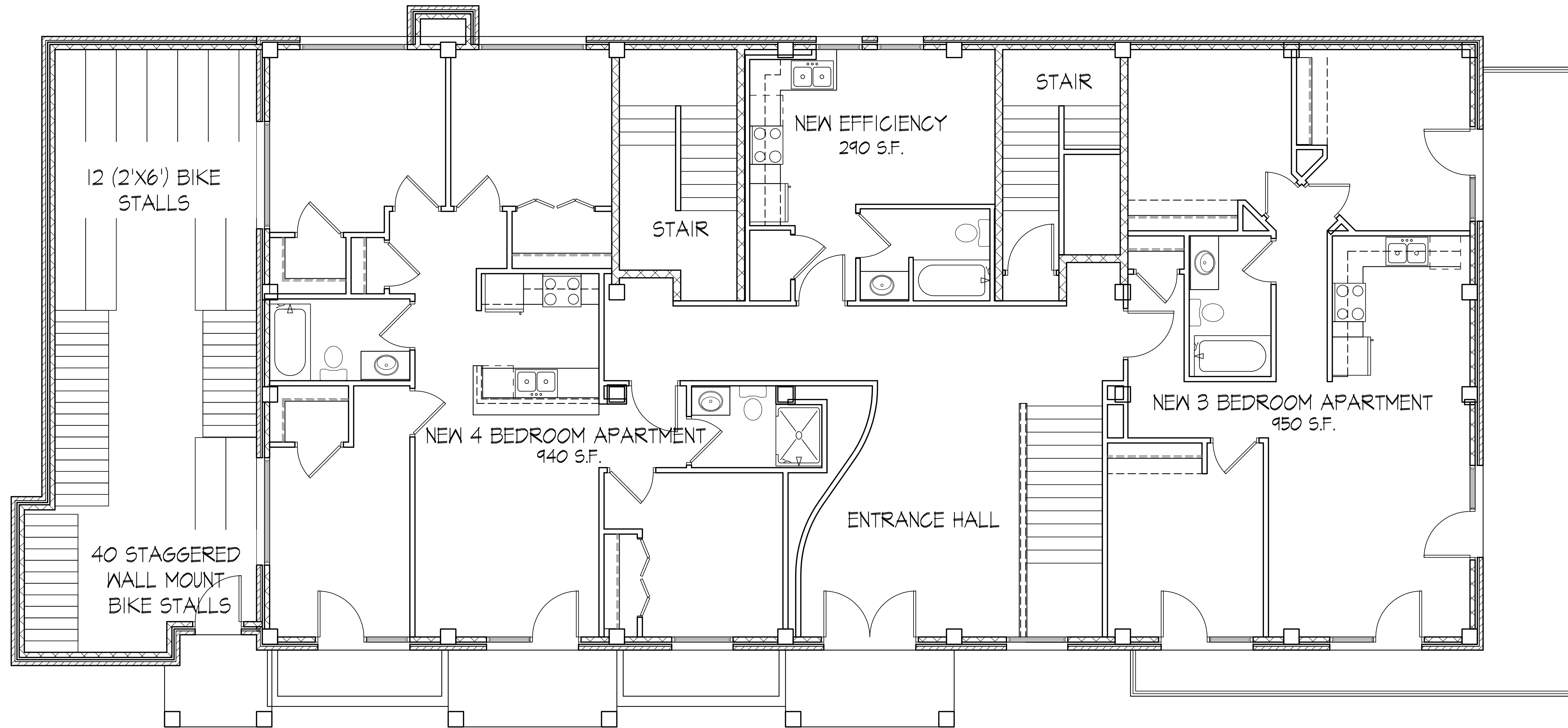
PROPOSED LOWER FLOOR PLAN
1/4" = 1'-0"

Drawing Title
**Proposed Lower Floor
Plan**

Project No. Drawing No.

1024 A-1.4

This document contains confidential or proprietary information of Knothe & Bruce Architects. Neither the document nor the information herein is to be reproduced, distributed, used, or disclosed, either in whole or in part, except as specifically authorized by Knothe & Bruce Architects. Knothe & Bruce Architects is a Limited Liability Company of Wisconsin.



Revisions
DECEMBER 21, 2010 - ZONING BOARD OF APPEALS
JANUARY 14, 2011 - ALTERATION TO COND. USE SUBMITTAL

PROPOSED FIRST FLOOR PLAN
1/4" = 1'-0"

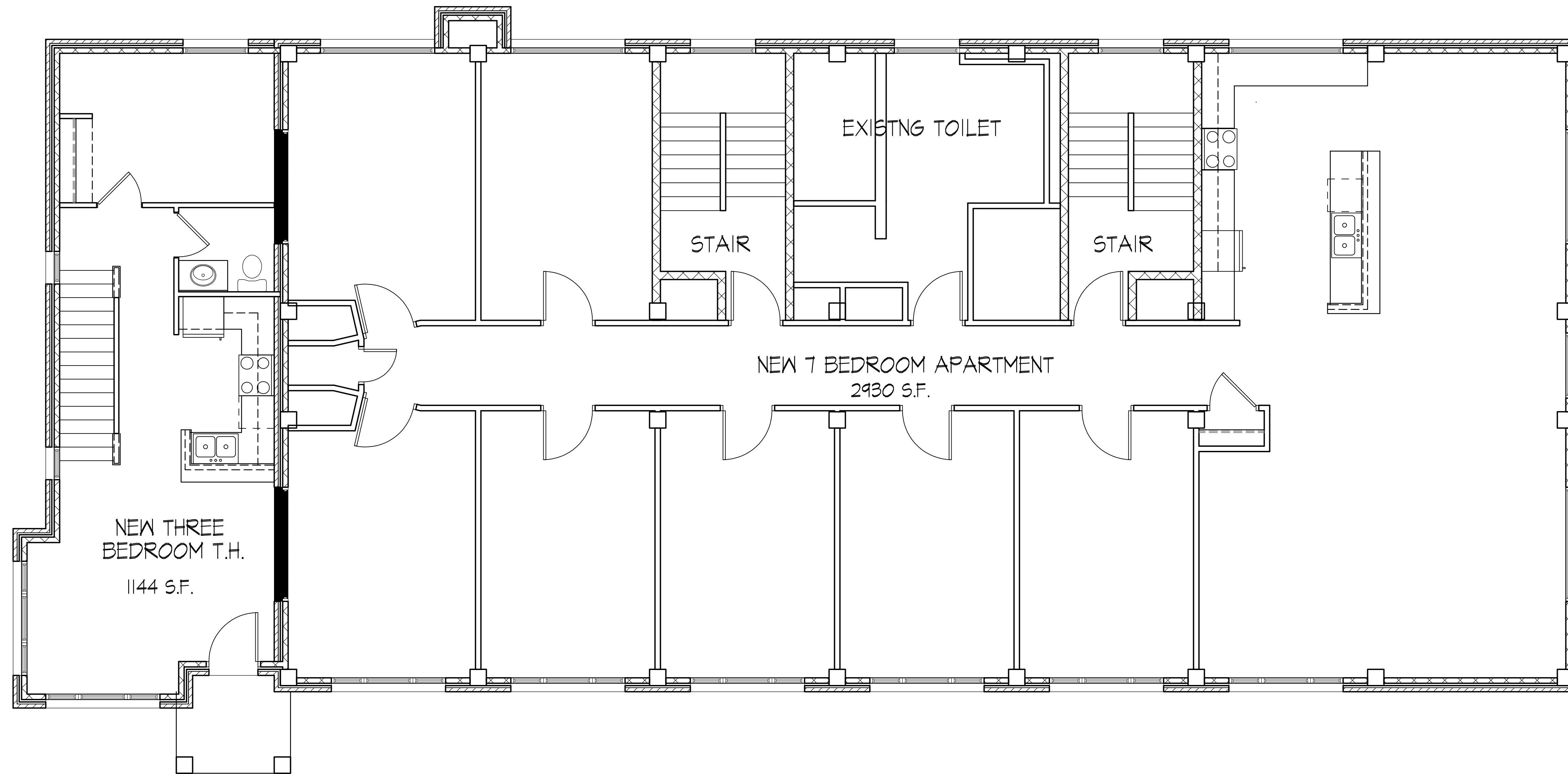
Project Title
640 N. Henry Street

Drawing Title
**Proposed First
Floor Plan**

Project No. Drawing No.

1024 A-1.5

This document contains confidential or proprietary information of Knothe & Bruce Architects. Neither the document nor the information herein is to be reproduced, distributed, used, or disclosed, either in whole or in part, except as specifically authorized by Knothe & Bruce Architects. Knothe & Bruce Architects is a Limited Liability Company of Wisconsin.



PROPOSED SECOND FLOOR PLAN
1/4" = 1'-0"

Revisions
DECEMBER 21, 2010 - ZONING BOARD OF APPEALS
JANUARY 11, 2011 - ALTERATION TO COND. USE SUBMITTAL

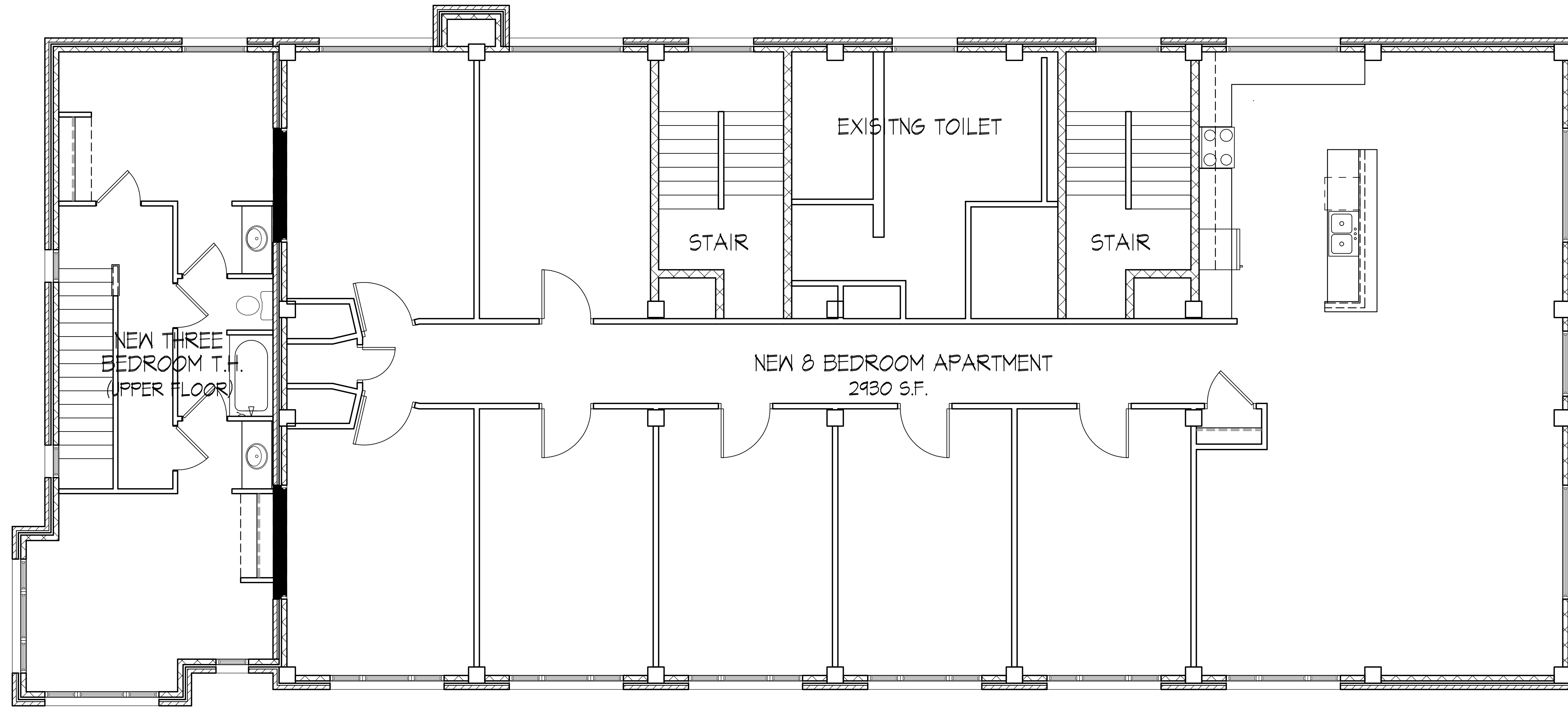
Project Title
640 N. Henry Street

Drawing Title
**Proposed Second
Floor Plan**

Project No. Drawing No.

1024 A-1.6

This document contains confidential or proprietary information of Knothe & Bruce Architects. Neither the document nor the information herein is to be reproduced, distributed, used, or disclosed, either in whole or in part, except as specifically authorized by Knothe & Bruce Architects. Knothe & Bruce Architects is a Limited Liability Company of Wisconsin.



Revisions
DECEMBER 27, 2010 - ZONING BOARD OF APPEALS
JANUARY 14, 2011 - ALTERATION TO COND. USE SUBMITTAL

PROPOSED THIRD FLOOR PLAN
1/4" = 1'-0"

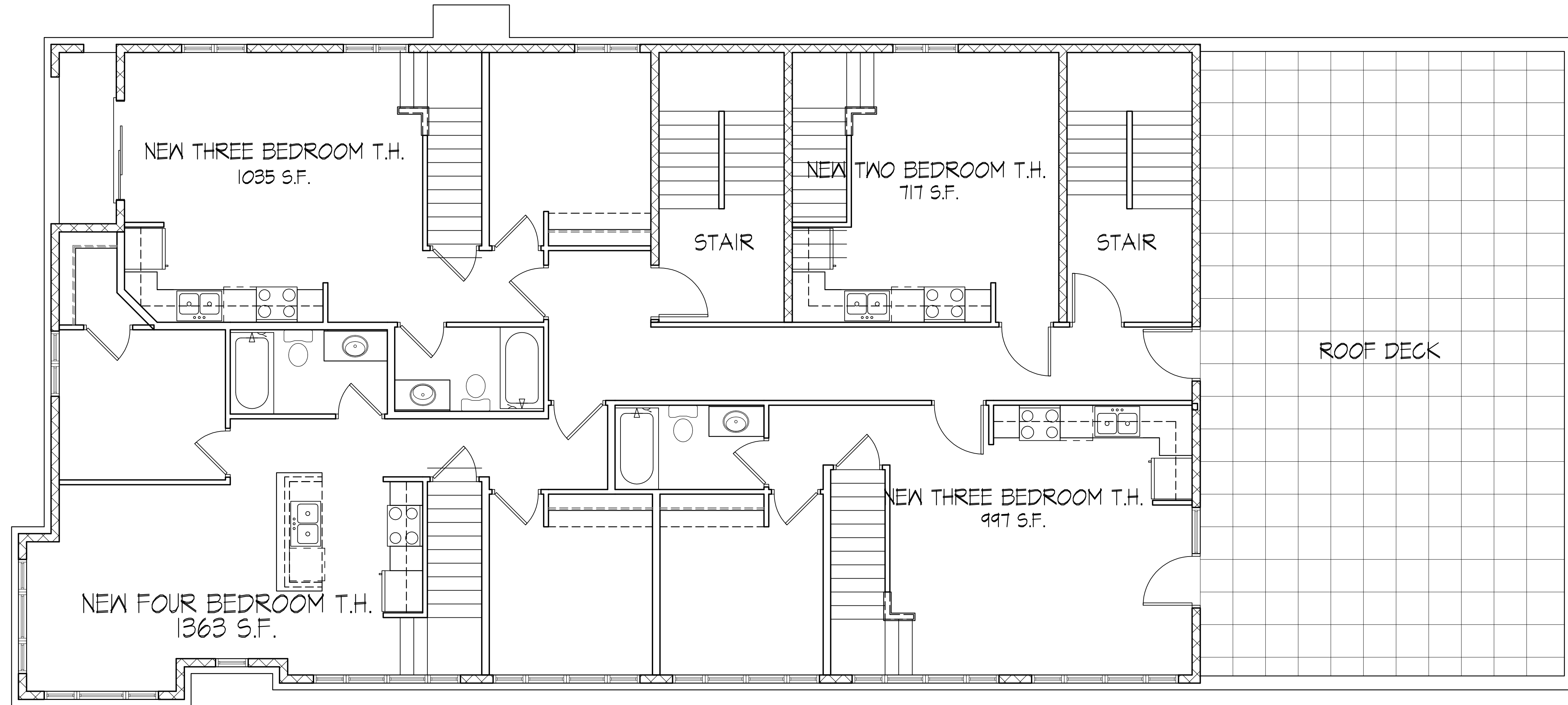
Project Title
640 N. Henry Street

Drawing Title
**Proposed Third
Floor Plan**

Project No. Drawing No.

1024 A-1.7

This document contains confidential or proprietary information of Knothe & Bruce Architects. Neither the document nor the information herein is to be reproduced, distributed, used, or disclosed, either in whole or in part, except as specifically authorized by Knothe & Bruce Architects. Knothe & Bruce Architects is a Limited Liability Company of Wisconsin.



Revisions
DECEMBER 21, 2010 - ZONING BOARD OF APPEALS
JANUARY 14, 2011 - ALTERATION TO COND. USE SUBMITTAL

PROPOSED FOURTH FLOOR PLAN
1/4" = 1'-0"

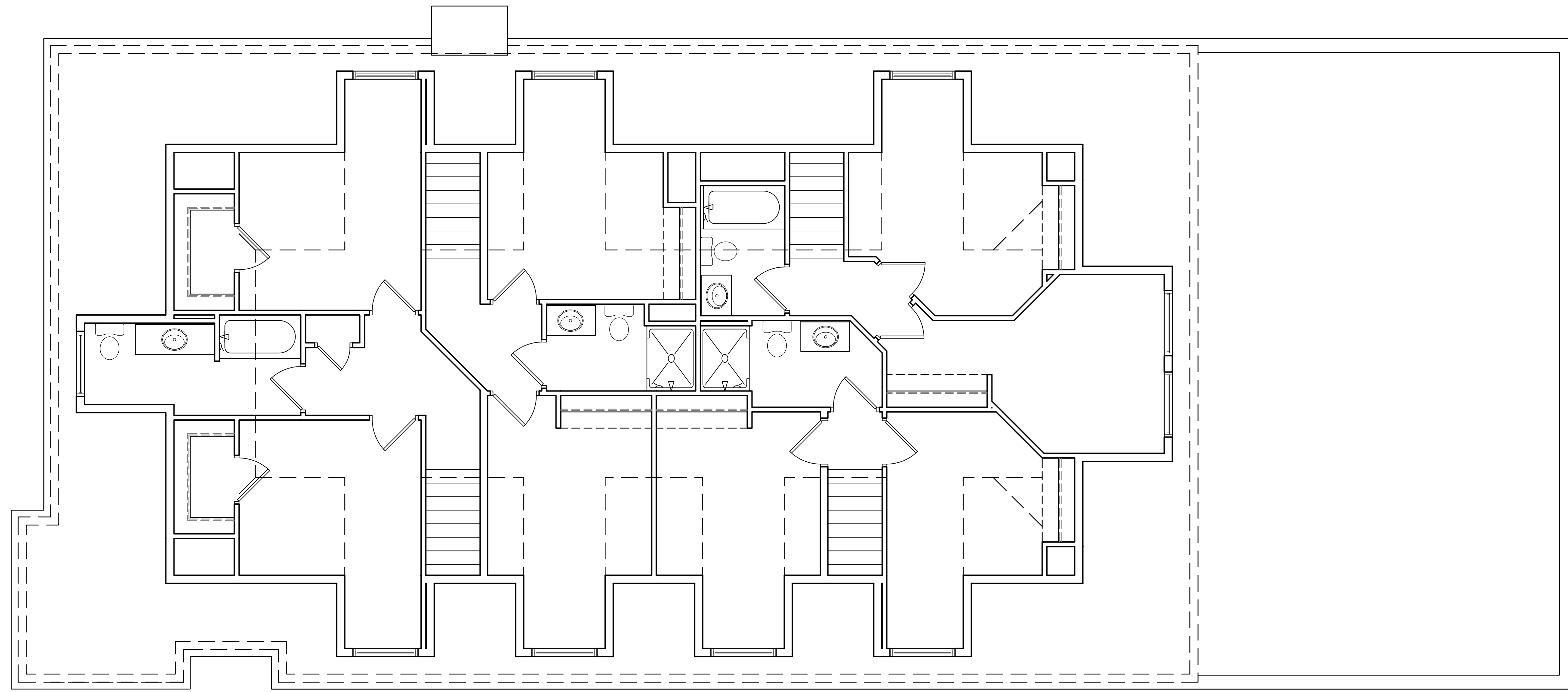
Project Title
640 N. Henry Street

Drawing Title
**Proposed Fourth
Floor Plan**

Project No. Drawing No.

1024 A-1.8

This document contains confidential or proprietary information of Knothe & Bruce Architects. Neither the document nor the information herein is to be reproduced, distributed, used, or disclosed, either in whole or in part, except as specifically authorized by Knothe & Bruce Architects. Knothe & Bruce Architects is a Limited Liability Company of Wisconsin.



Revisions
DECEMBER 21, 2010 - ZONING BOARD OF APPEALS
JANUARY 11, 2011 - ALTERATION TO COND. USE SUBMITTAL

PROPOSED LOFT FLOOR PLAN
1/4" = 1'-0"

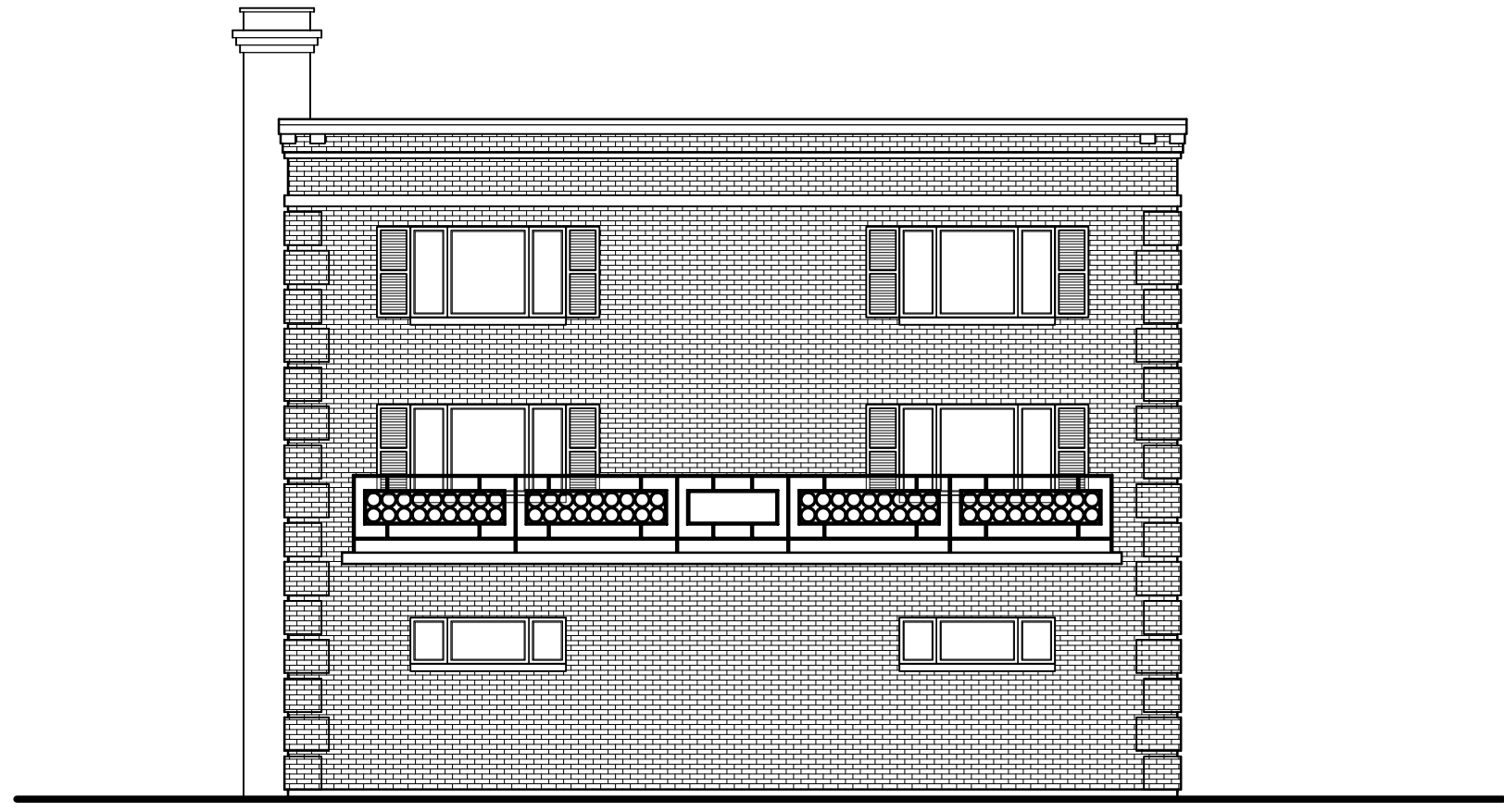
Project Title
640 N. Henry Street

Drawing Title
**Proposed Loft
Floor Plan**

Project No. Drawing No.

1024 A-1.9

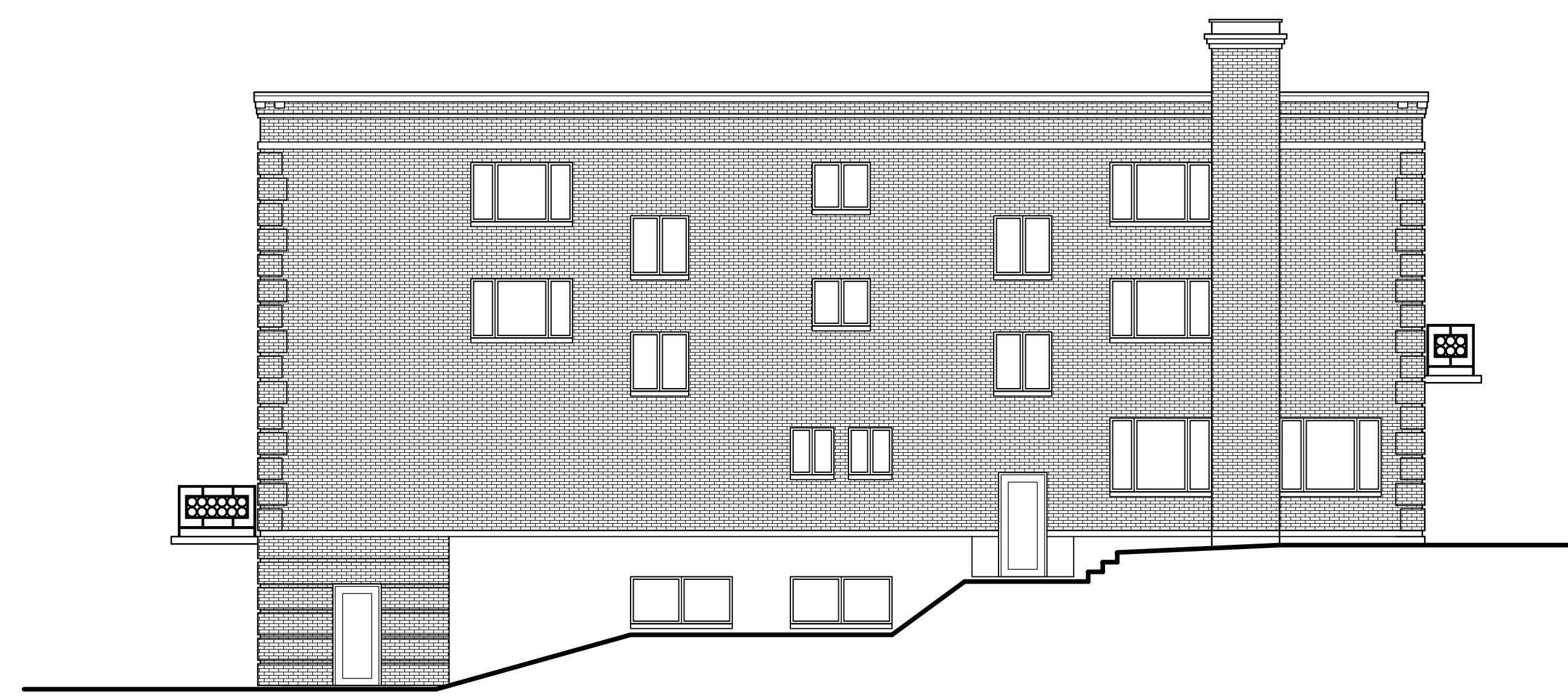
This document contains confidential or proprietary information of Knothe & Bruce Architects. Neither the document nor the information herein is to be reproduced, distributed, used, or disclosed, either in whole or in part, except as specifically authorized by Knothe & Bruce Architects. Knothe & Bruce Architects is a Limited Liability Company of Wisconsin.



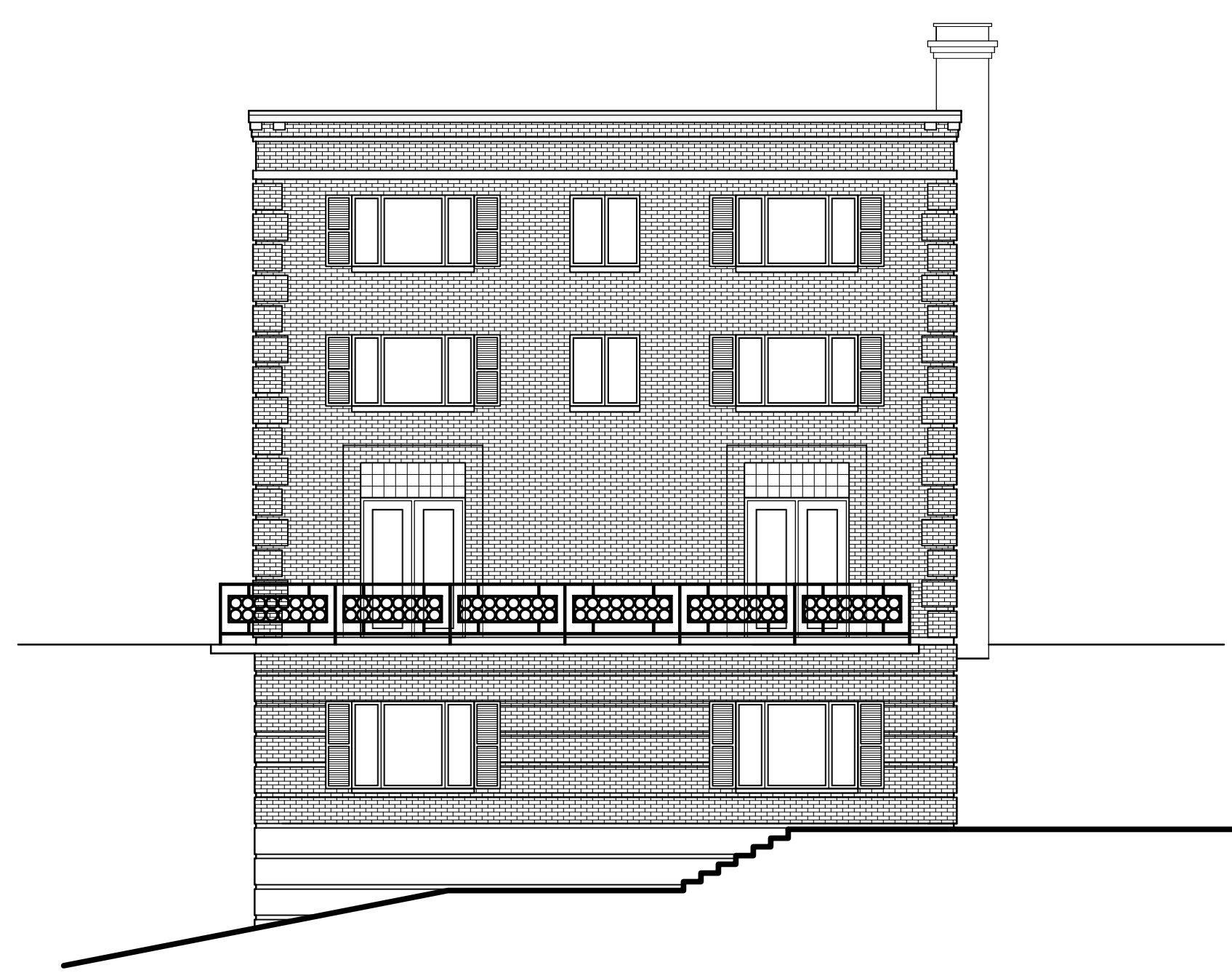
○ SOUTH ELEVATION
1/8" = 1'-0"



○ EAST ELEVATION
1/8" = 1'-0"



○ WEST ELEVATION
1/8" = 1'-0"



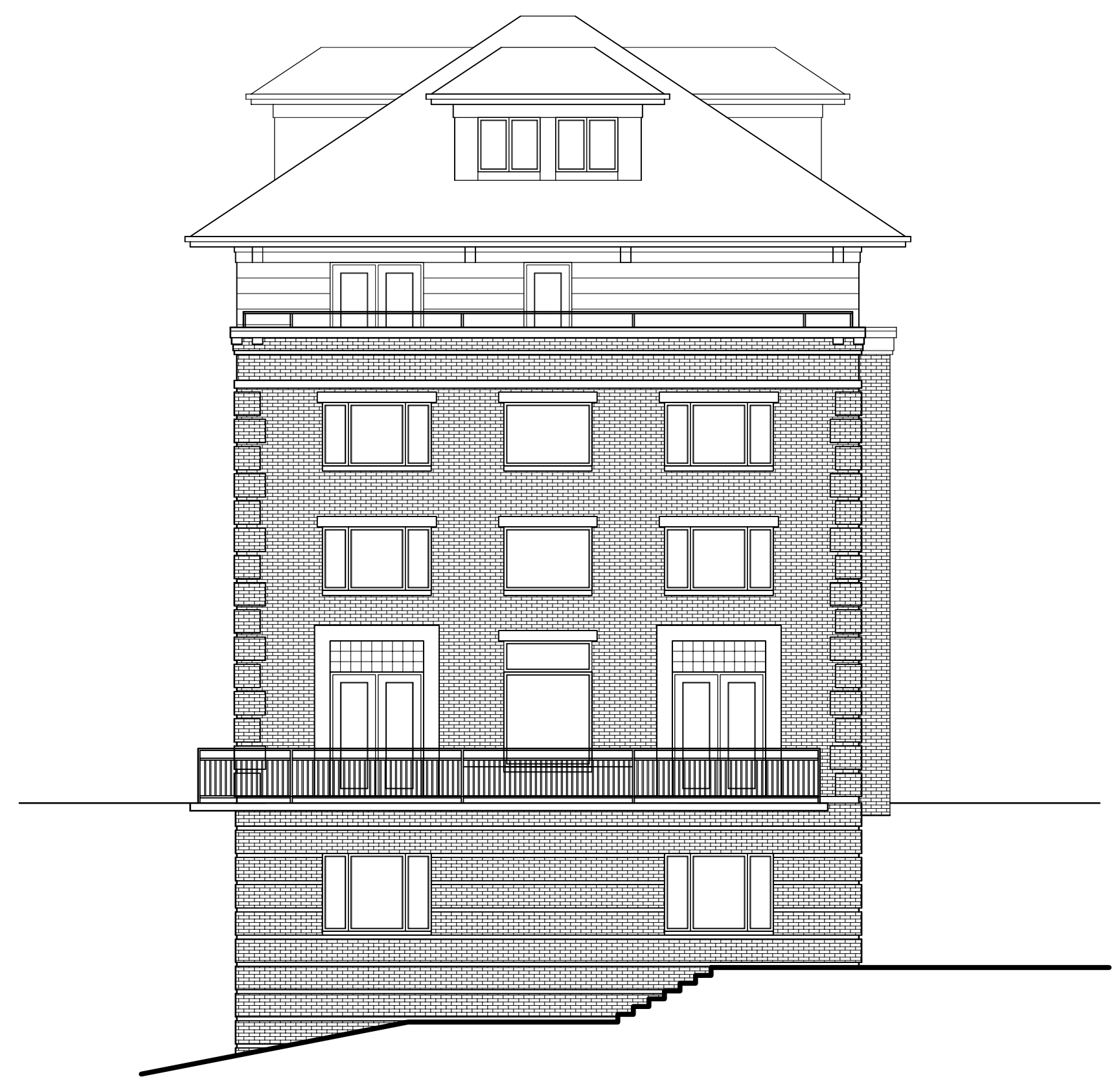
○ NORTH ELEVATION
1/8" = 1'-0"



○ SIDE ELEVATION
1/8" = 1'-0"



○ FRONT ELEVATION
1/8" = 1'-0"



○ LAKESIDE ELEVATION
1/8" = 1'-0"



○ REAR ELEVATION
1/8" = 1'-0"

Revisions
DECEMBER 21, 2010 - ZONING BOARD OF APPEALS
JANUARY 11, 2011 - ALTERATION TO COND. USE SUBMITTAL

Project Title
640 N. Henry Street

Drawing Title
Proposed Elevations

Project No. 1024 Drawing No. A-2.2

This document contains confidential or proprietary information of Knothe & Bruce Architects. Neither the document nor the information herein is to be reproduced, distributed, used, or disclosed, either in whole or in part, except as specifically authorized by Knothe & Bruce Architects. Knothe & Bruce Architects is a Limited Liability Company of Wisconsin.