



South Side of House Looking  
North



East Side of Garage Looking  
West



**Colkins Engineering, LLC**  
Civil Engineers & Land Surveyors

**Figure 1 - Residential house**  
Project Name: 6602 County Trunk Highway T  
Project Location: Madison, Wisconsin



East Side of Barn Looking West



Southeast Portion of Property  
Looking Northwest



**Colkins Engineering, LLC**  
Civil Engineers & Land Surveyors

**Figure 2 - Residential house**

Project Name: 6602 County Tunk Highway T  
Project Location: Madison, Wisconsin





Northeast Portion of Property  
Looking Southwest



Northeast of House Looking  
Southwest



**Colkins Engineering, LLC**  
Civil Engineers & Land Surveyors

**Figure 3 - Residential house**

Project Name: 6602 County Trunk Highway T  
Project Location: Madison, Wisconsin



Back Entry Way



Kitchen Area



**Calkins Engineering, LLC**  
Civil Engineers & Land Surveyors

**Figure 4 - Residential house**

Project Name: 6602 County Trunk Highway T  
Project Location: Madison, Wisconsin





Kitchen Area



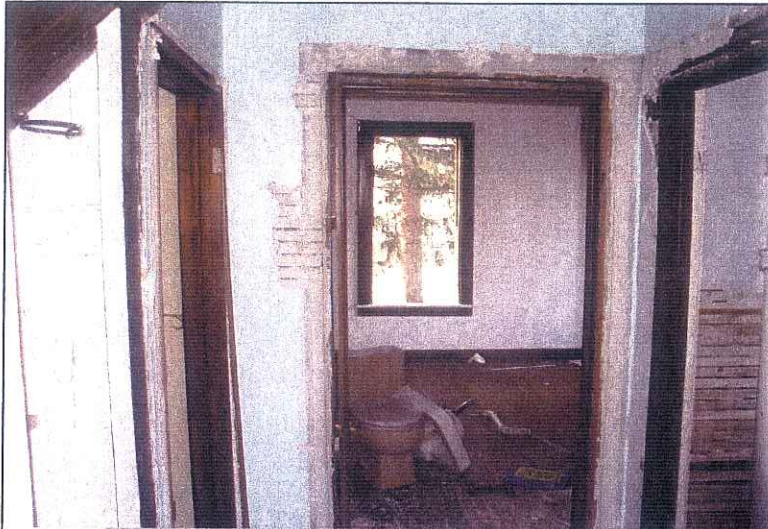
Front Entrance



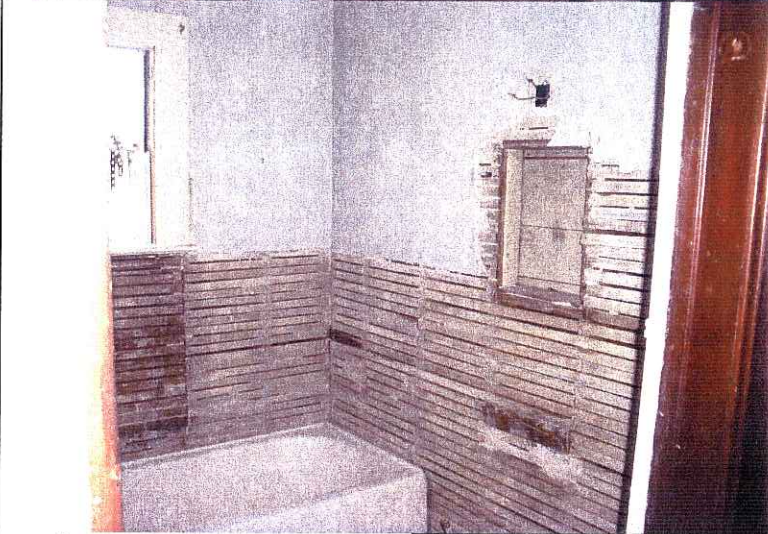
**Calkins Engineering, LLC**  
Civil Engineers & Land Surveyors

**Figure 5 - Residential house**

Project Name: 6602 County Trunk Highway T  
Project Location: Madison, Wisconsin



Back hallway and rear bedroom



Bathroom





Basement Stairs



Hallway Closet



**Calkins Engineering, LLC**  
Civil Engineers & Land Surveyors

**Figure 7 - Residential house**

Project Name: 6602 County Trunk Highway T  
Project Location: Madison, Wisconsin



From Kitchen to Back Entry way



Looking into Kitchen From  
Bedroom



**Calkins Engineering, LLC**  
Civil Engineers & Land Surveyors

**Figure 8 - Residential house**

Project Name: 6602 County Trunk Highway T  
Project Location: Madison, Wisconsin