

Aerial Photograph: Year 2005

Madison, Wisconsin

Madison Memorial High School And Jefferson Middle School

Gannon Road

Mineral Point Road

West Towne Mall

Subject Site

Grand Canyon Dr.

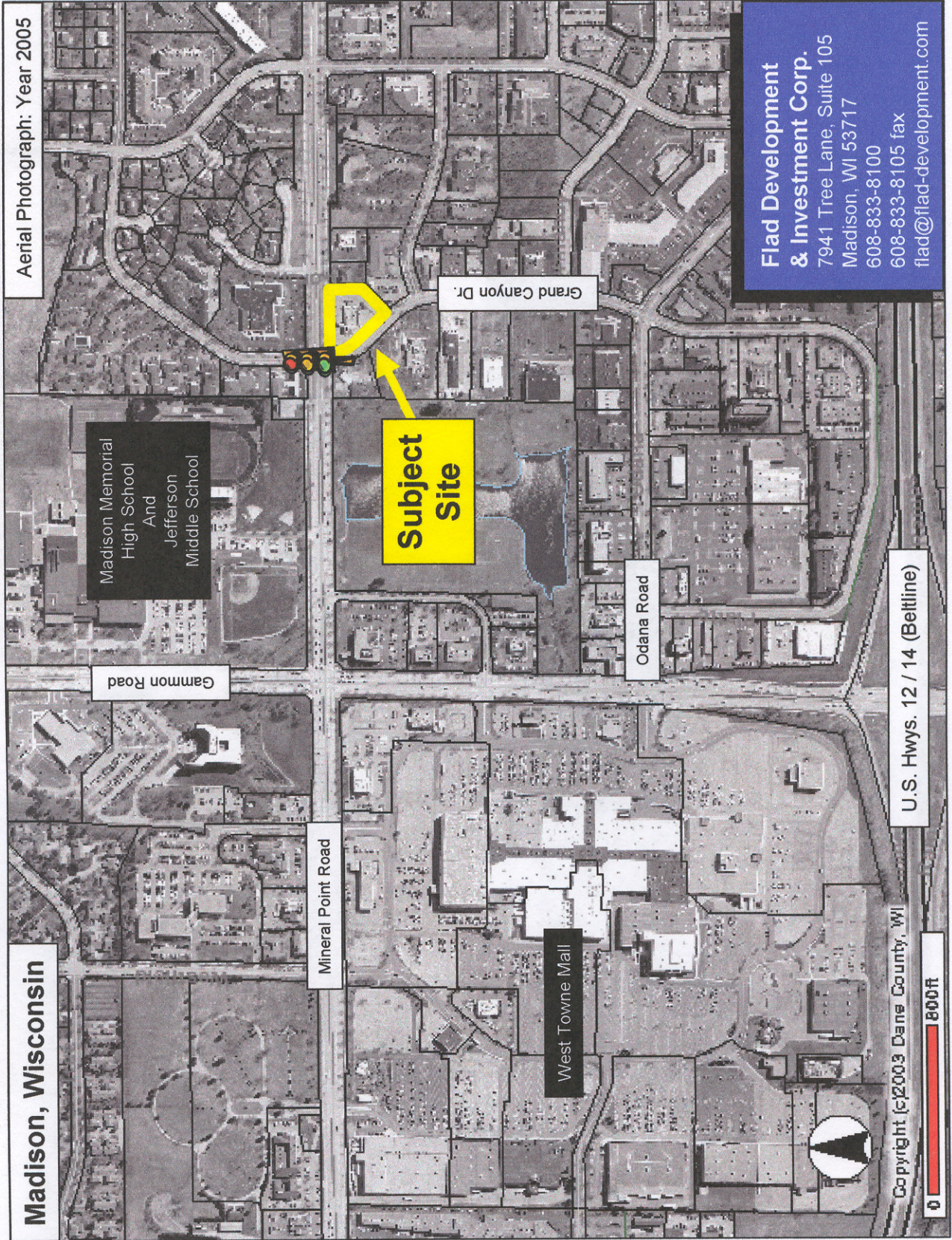
Odana Road

Flad Development & Investment Corp.
7941 Tree Lane, Suite 105
Madison, WI 53717
608-833-8100
608-833-8105 fax
flad@flad-development.com

U.S. Hwys. 12 / 14 (Bellline)

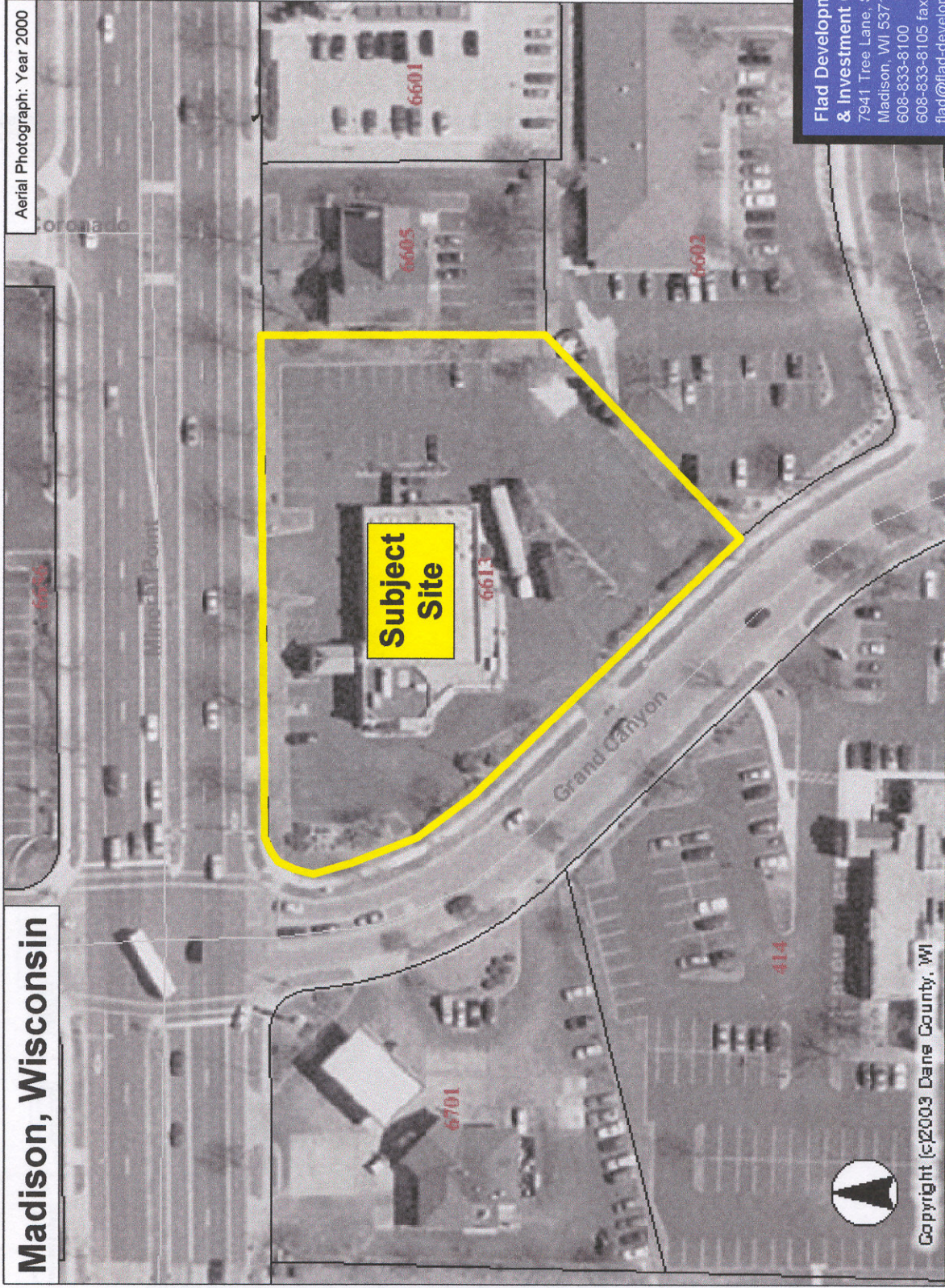
Copyright (c)2003 Dane County, WI

800ft



Madison, Wisconsin

Aerial Photograph: Year 2000



Subject Site

Flad Development & Investment Corp.
7941 Tree Lane, Suite 105
Madison, WI 53717
608-833-8100
608-833-8105 fax
flad@flad-development.com

Copyright ©2003 Dane County, WI

TIMBER LODGE SITE



View from Mineral Point Rd. at Grand Canyon intersection (front entry)



View from south (rear of building)

TIMBER LODGE SITE



View of service area of building (east side)



View of entry canopy (in disrepair)

TIMBER LODGE SITE



View of kitchen equipment



View of kitchen equipment

TIMBER LODGE SITE



View of interior dining area



View of interior dining area