

ISSUED  
GDP Amendment - November 19, 2014  
Issued for SIP Submittal - June 24, 2015

PROJECT TITLE  
**Maple Grove Commons**

McKee Road, Madison  
SHEET TITLE  
**OVERALL GDP SITE PLAN**

SHEET NUMBER  
**C-1.0**  
PROJECT NO. **1355**  
© 2013 Knothe & Bruce Architects, LLC

ISSUED  
GDP Amendment - November 19, 2014  
Issued for SIP Submittal - June 24, 2015

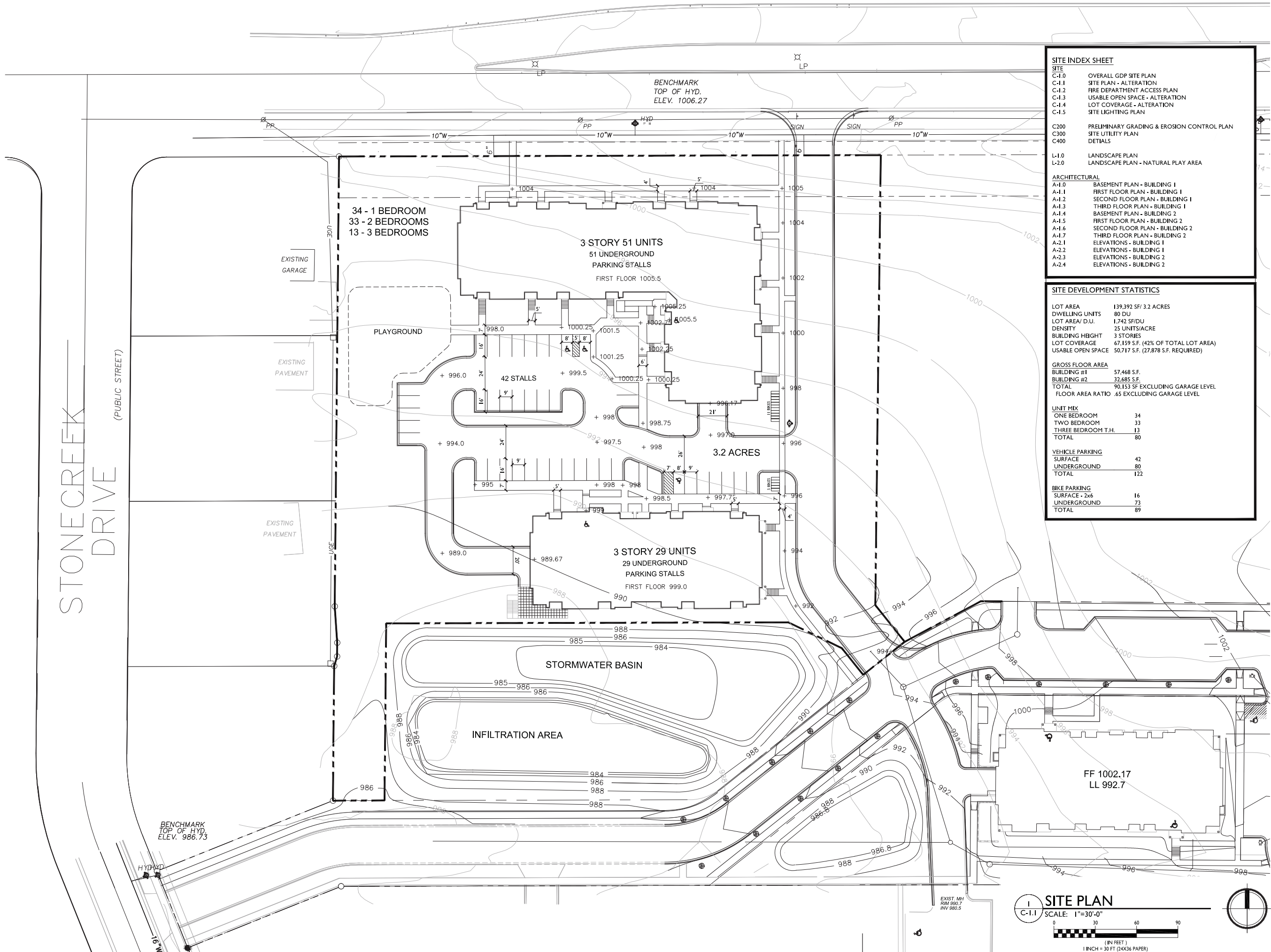
PROJECT TITLE  
**Maple Grove Commons**

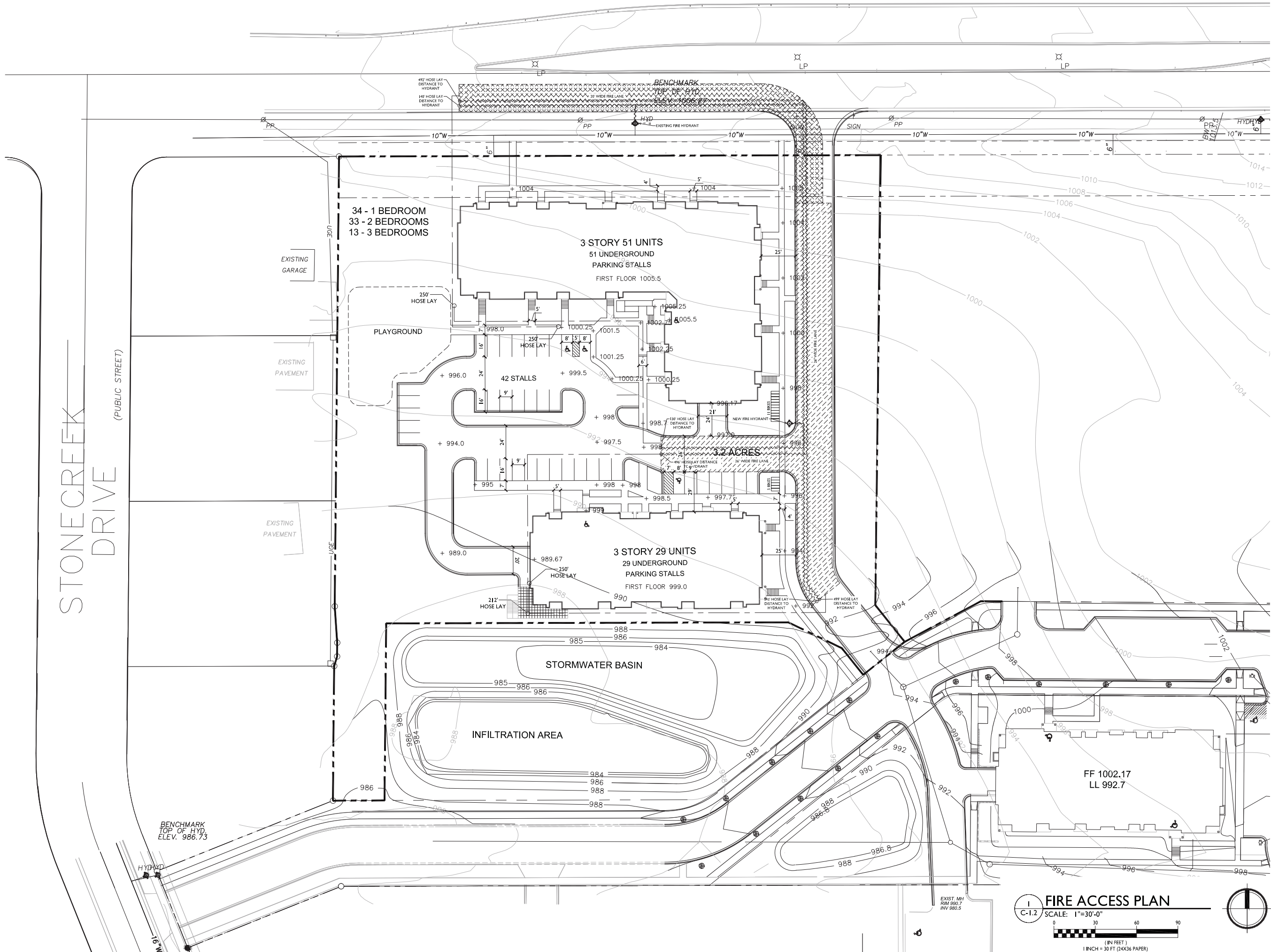
McKee Road, Madison  
SHEET TITLE  
**SITE PLAN**

SHEET NUMBER

**C-1.1**

PROJECT NO. **1355**  
© 2013 Knothe & Bruce Architects, LLC





ISSUED  
GDP Amendment - November 19, 2014  
Issued for SIP Submittal - June 24, 2015

PROJECT TITLE  
**Maple Grove Commons**

McKee Road, Madison  
SHEET TITLE  
**FIRE DEPARTMENT ACCESS PLAN**

SHEET NUMBER

**C-1.2**

PROJECT NO. **1355**  
© 2013 Knothe & Bruce Architects, LLC

**FIRE ACCESS PLAN**  
C-1.2  
SCALE: 1"=30'-0"  
0 30 60 90  
(IN FEET)  
1 INCH = 30 FT (24X36 PAPER)





ISSUED  
GDP Amendment - November 19, 2014  
Issued for SIP Submittal - June 24, 2015

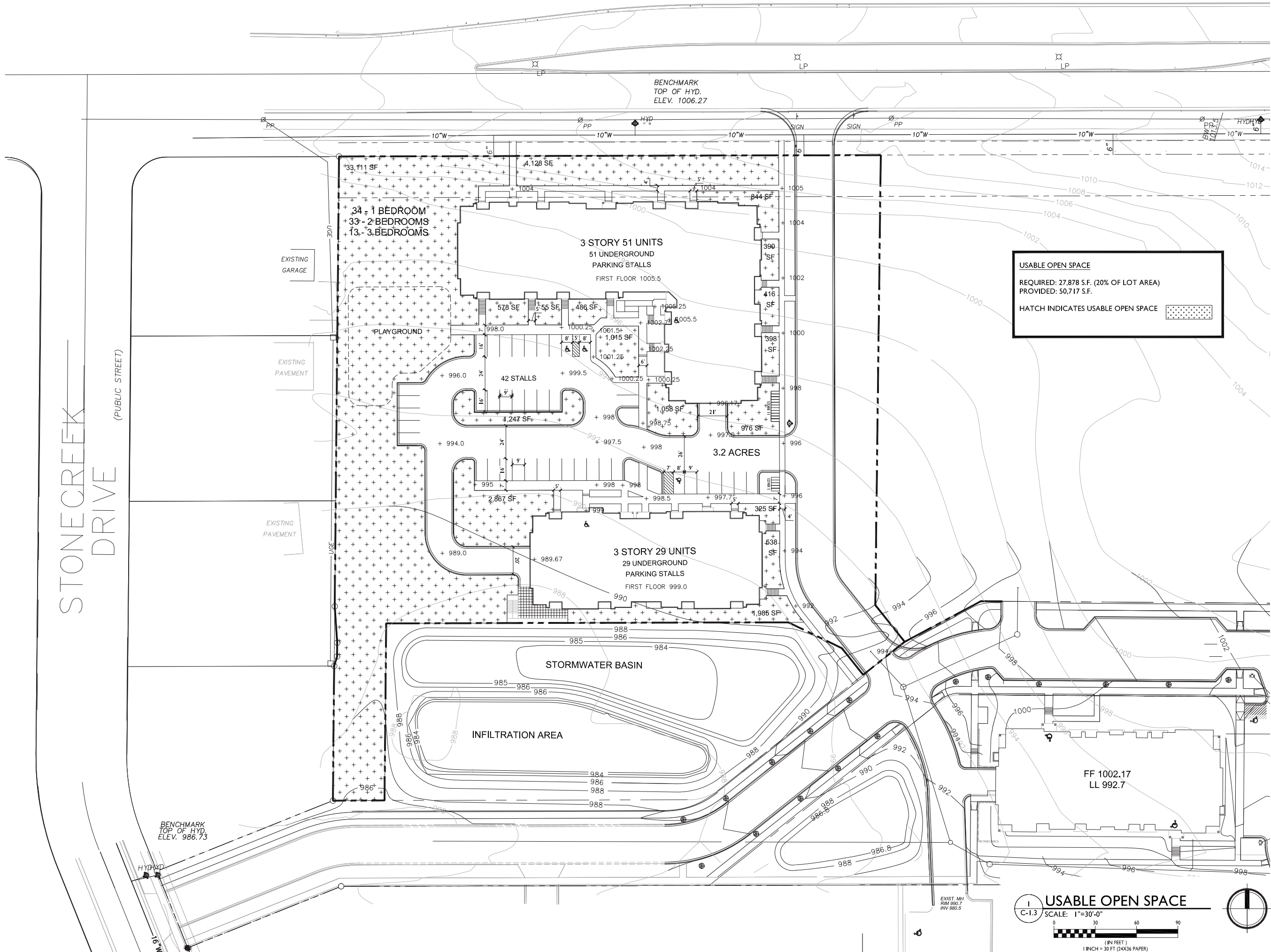
PROJECT TITLE  
**Maple Grove Commons**

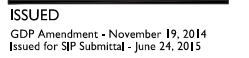
McKee Road, Madison  
SHEET TITLE  
**USABLE OPEN SPACE**

SHEET NUMBER

**C-1.3**

PROJECT NO. **1355**  
© 2013 Knothe & Bruce Architects, LLC





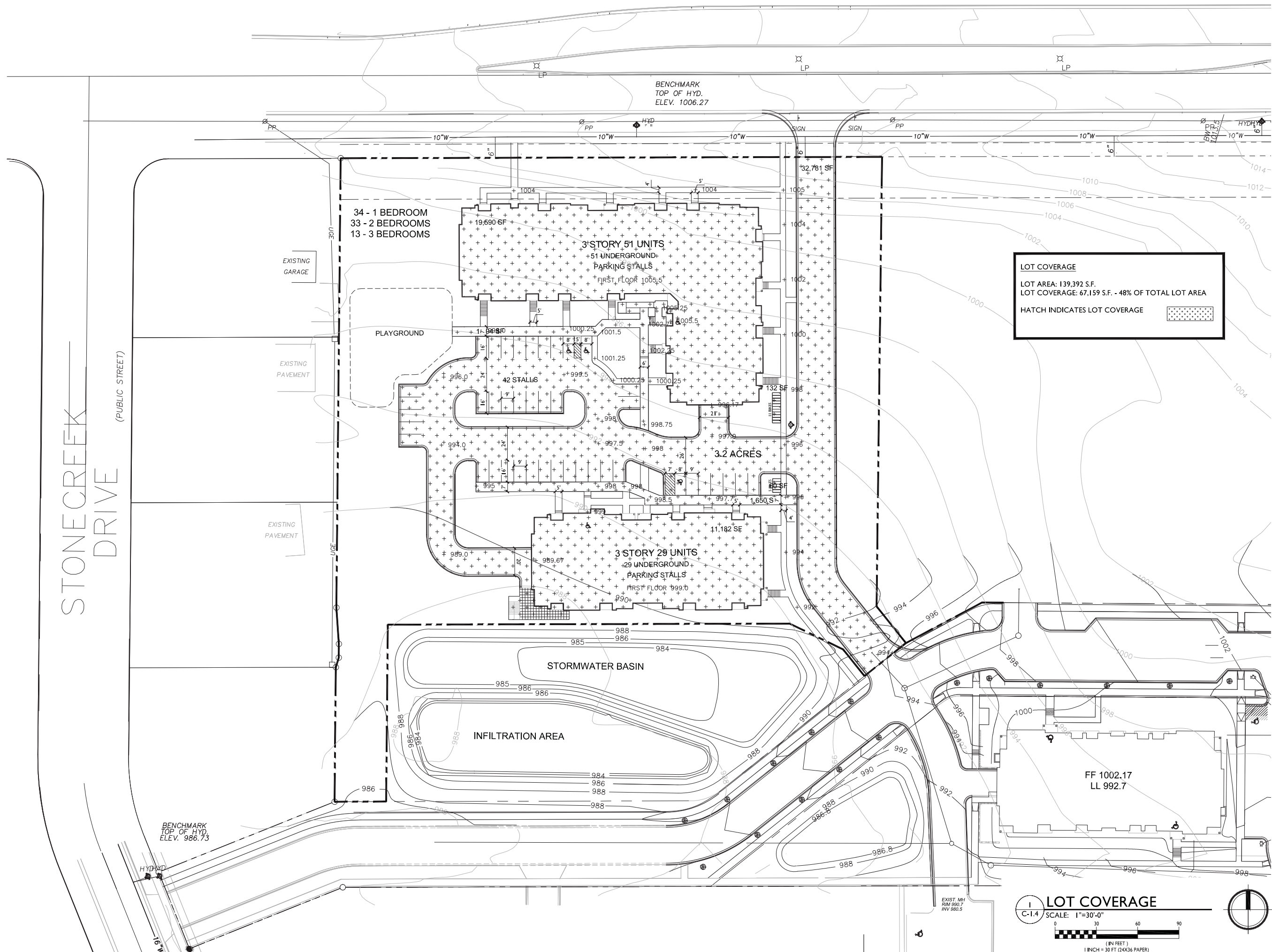
McKee Road, Madison  
SHEET TITLE  
LOT  
COVERAGE

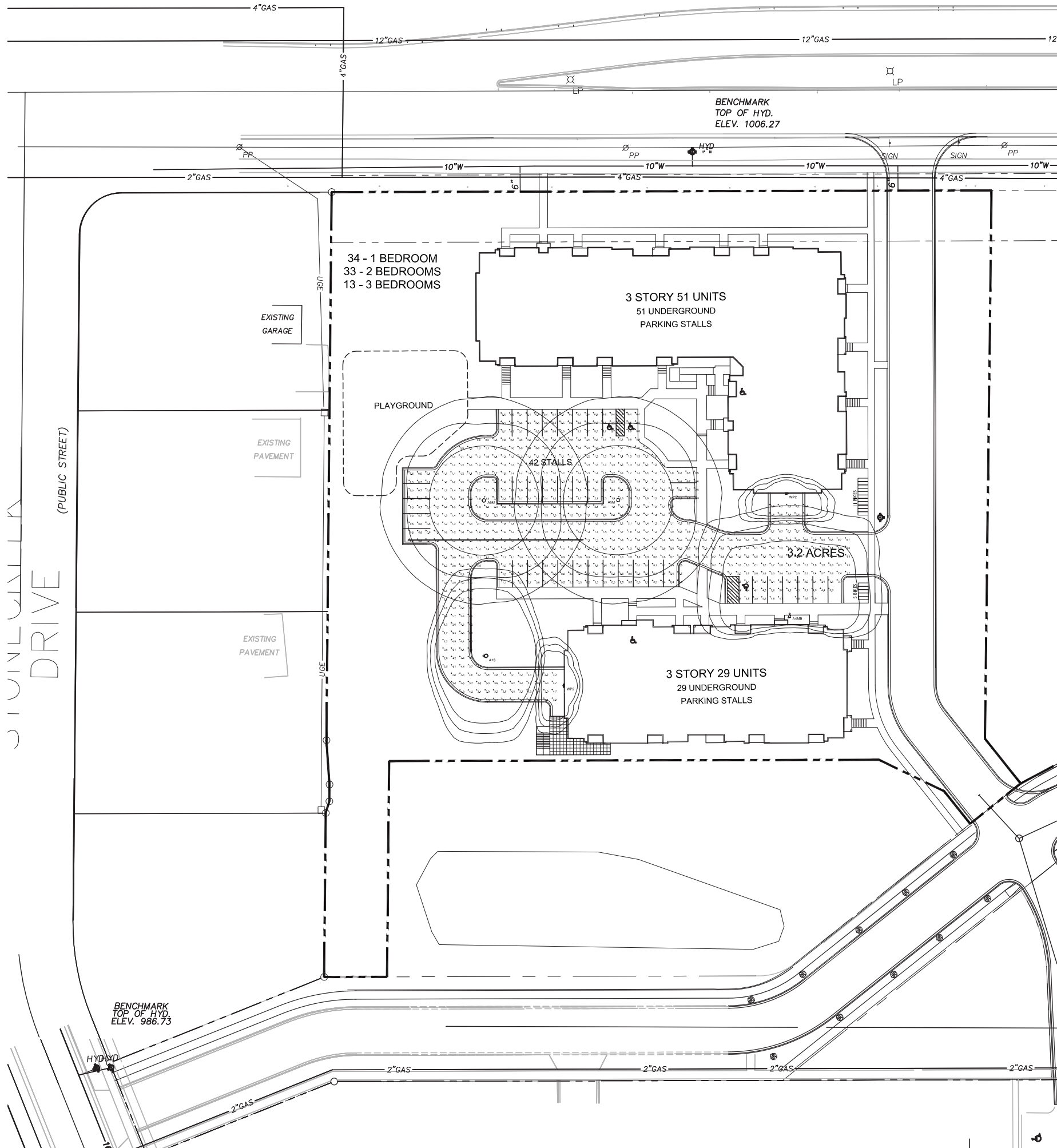
SHEET NUMBER

C-1.4

PROJECT NO. 1355

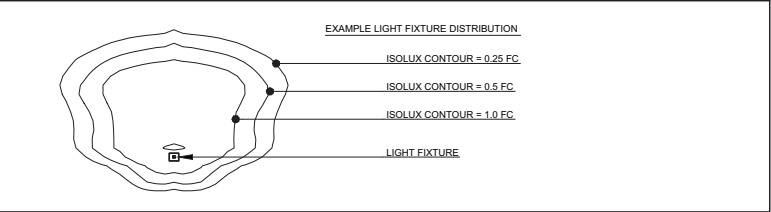
© 2013 Knothe & Bruce Architects, LLC





STATISTICS						
Description	Symbol	Avg	Max	Min	Max/Min	Avg/Min
Calc Zone	+	1.5 fc	5.8 fc	0.4 fc	14.5:1	3.8:1

LUMINAIRE SCHEDULE							
Symbol	Label	Qty	Catalog Number	Description	Lamp	File	Mounting
	WP2	2	XSPWAx2FG-U	Cree XSPW Series Wallpack Luminaire, Type II Medium, 4000K, Input Power Designator G	4 type MDA LEDs	XSPWAx2FG- U_RESTL-2014- -0017.IES	9'-0" ABOVE GRADE ON SIDE OF BUILDING
	A1S	1	ARE-EDG-1S-xx- 06-E-UL-xx-700- 40K-xxxx (BXALX08E-UD7)	Cree Edge Area, Type I Short, 60 LEDs, 700mA, 4000K	Sixty White LEDs, Vertical Base-Up Position	ARE-EDG-1S- -06-E-UL- 700-40K.ies	19'-0" ABOVE GRADE- 17'-0" POLE ON 2'-0" TALL CONC. BASE
	A4MB	1	ARE-EDG-4MB-DA- -12-E-UL-XX-525- 40K (BXAL1J12E- UC7)	Cree Edge Area, Type IV Medium w/ Full B.S., 120 LEDs, 525mA, 4000K	One Hundred Twenty White LEDs, Vertical Base-Up Position	ARE-EDG- 4MB-_-12-E- UL-525-40K.ies	22'-0" ABOVE GRADE 20'-0" POLE ON 2'-0" TALL CONC. BASE
	ASM	2	ARE-EDG-SM-xx- 06-E-UL-xx-700- 40K-xxxx (BXALX508E-UD7)	Cree Edge Area, Type V Medium, 60 LEDs, 700mA, 4000K	Sixty White LEDs, Vertical Base-Up Position	ARE-EDG-SM- -06-E-UL- 700-40K.ies	22'-0" ABOVE GRADE 20'-0" POLE ON 2'-0" TALL CONC. BASE



I

C-1.5

SITE LIGHTING PLAN

SCALE: 1"=30'-0"

0

30

60

90

(IN FEET)

1 INCH = 30 FT (24X36 PAPER)

ISSUED  
GDP Amendment - November 19, 2014  
Issued for SIP Submittal - June 24, 2014

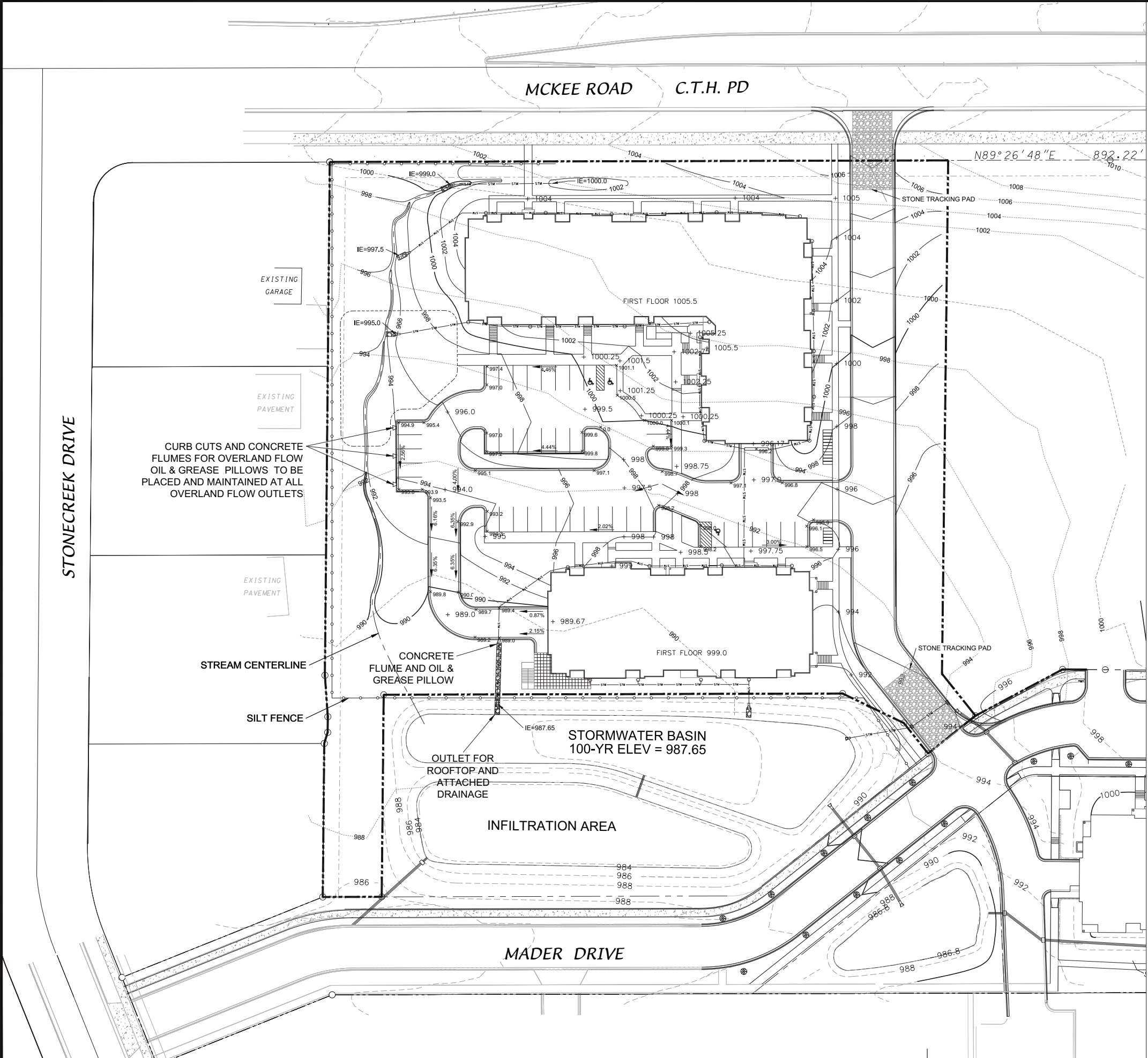
PROJECT TITLE  
Maple Grove Commons

McKee Road, Madison  
SHEET TITLE  
SITE LIGHTING PLAN

SHEET NUMBER

C-1.5  
PROJECT NO. 1355  
© 2013 Knothe & Bruce Architects, LLC





- SITE GRADING AND EROSION CONTROL NOTES
1. All site grading and erosion control shall conform to the City of Madison Chapter 37 Ordinance and any addendums prior to the contract bid date.
  2. Silt fence and the stone tracking pad shall be installed at the start of site grading and maintained until the site has been stabilized.
  3. Areas disturbed within the McKee Road right-of-way shall be restored with 4" topsoil, fertilizer, seed and mulch.
  4. Disturbed areas within the site shall be restored per the approved landscape plan.
  5. McKee Rd and Mader Dr shall be cleaned daily as necessary. Hydraulic flushing will not be allowed.
  6. Erosion control shall be the responsibility of the Earthwork Contractor until the site has been stabilized. Erosion measures as listed shall be the minimum that will be acceptable.
  7. The Contractor shall install additional erosion measures as requested in writing by the project superintendent or the City of Madison within 24 hours of notification.
  8. Once the site has undergone final restoration and vegetation has established, the silt fence shall be removed and if necessary, restored with fertilizer, seed and mulch. Alternatively, if vegetation has not established, erosion matting must be placed on all disturbed areas that may drain toward the silt fence.
  9. Type D inlet filter bags shall be installed in all inlets receiving runoff immediately upon placement of structure. They shall be cleaned and maintained throughout construction and removed after a satisfactory stand of grass has been achieved.
  10. Slopes 4:1 or steeper shall be restored with 4" topsoil, fertilizer, seed and Class I, Type A erosion mat. Seed mix shall be consistent with the approved landscape plan.

D'ONOFRIO NOTKE AND ASSOCIATES, INC.  
7230 Westland Way, Madison, WI 53717  
Phone: 608.833.7398 Fax: 608.833.1889  
YOUR NATURAL RESOURCE FOR LAND DEVELOPMENT

PRELIMINARY GRADING AND EROSION CONTROL

MAPLE GROVE COMMONS

CITY OF MADISON, DANE COUNTY, WISCONSIN

SCALE: 1" = 30'  
(PAGE SIZE: 24x36)

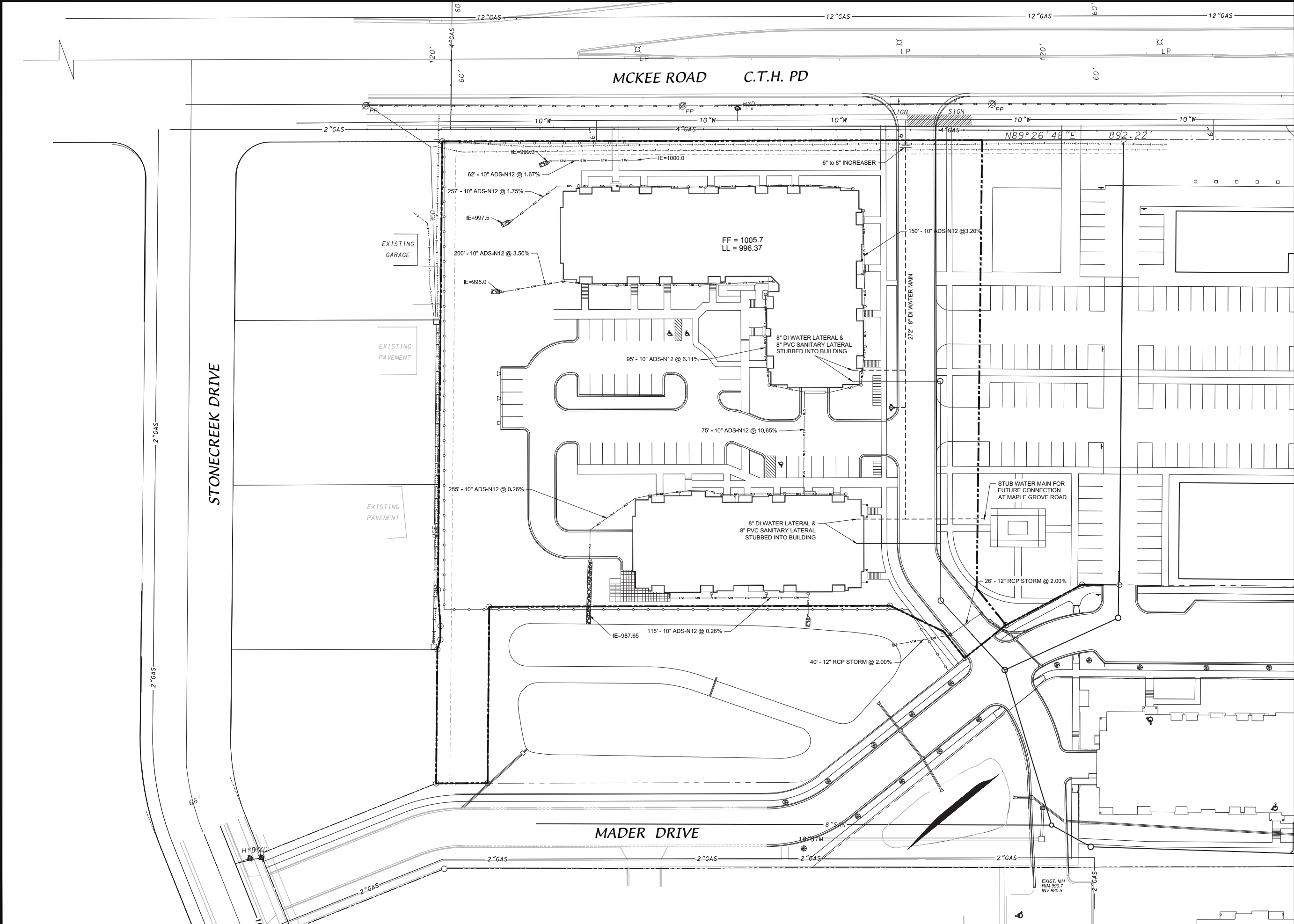
DATE: 06-24-15  
REVISED:

DRAWN BY: JLM

FN: 14-03-109

Sheet Number:

C200



**D'ONOFRIO KOTKE AND ASSOCIATES, INC.**  
7230 Westland Way, Madison, WI 53717  
Phone: 608.833.7330 • Fax: 608.833.1889  
YOUR NATURAL RESOURCE FOR LAND DEVELOPMENT

**MAPLE GROVE COMMONS**

SITE UTILITY PLAN

CITY OF MADISON, DANE COUNTY, WISCONSIN

SCALE: 1" = 30'  
(PAGE SIZE: 24x36)

DATE: 06-24-15  
REVISED:

DRAWN BY: JLM

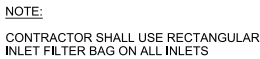
FN: 14-03-109

Sheet Number:  
**C300**





GOOD OR  
L POST



DETAILS

MAPLE GROVE COMMONS

CITY OF MADISON, DANE COUNTY, WISCONSIN



DATE: 06-24-15  
REVISED:

FN: 14-03-109

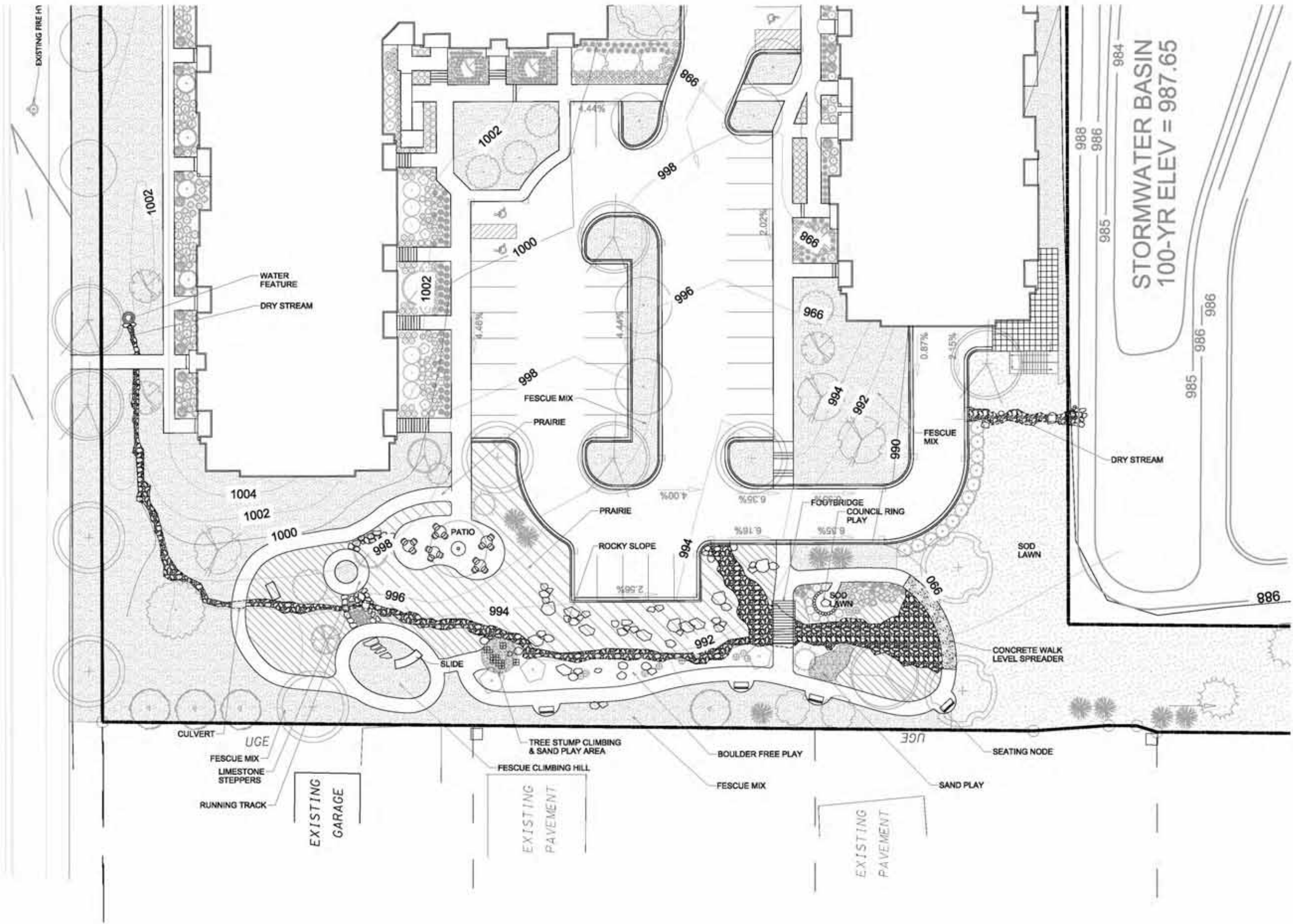
Sheet Number:  
**C400**







# MCKEE ROAD C.T.H.



**K02**  
knothe bruce  
ARCHITECTS  
Phone: 608.234.3490 7401 University Ave, Suite 201  
Madison, WI 53742

CONSULTANT  
**KEN SAIKI**  
DESIGN INC  
LANDSCAPE ARCHITECTS  
1001 UNIVERSITY AVE, SUITE 201  
MADISON, WI 53742  
Phone: 608.234.3490  
Fax: 608.234.3491

REVISIONS  
SIP Submittal June 24, 2015

PROJECT TITLE  
Maple Grove

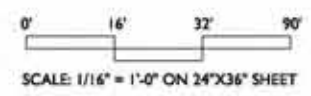
SHEET TITLE  
LANDSCAPE  
PLAN -  
NATURAL  
PLAY AREA

SHEET NUMBER

**L-2.0**

PROJECT NO. 1355

© 2012 Knothe & Bruce Architects



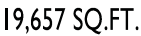




PROJECT TITLE  
Maple Grove  
Commons

SHEET NUMBER

© 2013 Knothe & Bruce Architects, LLC



ISSUED  
Revised GDP - November 19, 2014  
Issued for SIP Submittal - June 24, 2015

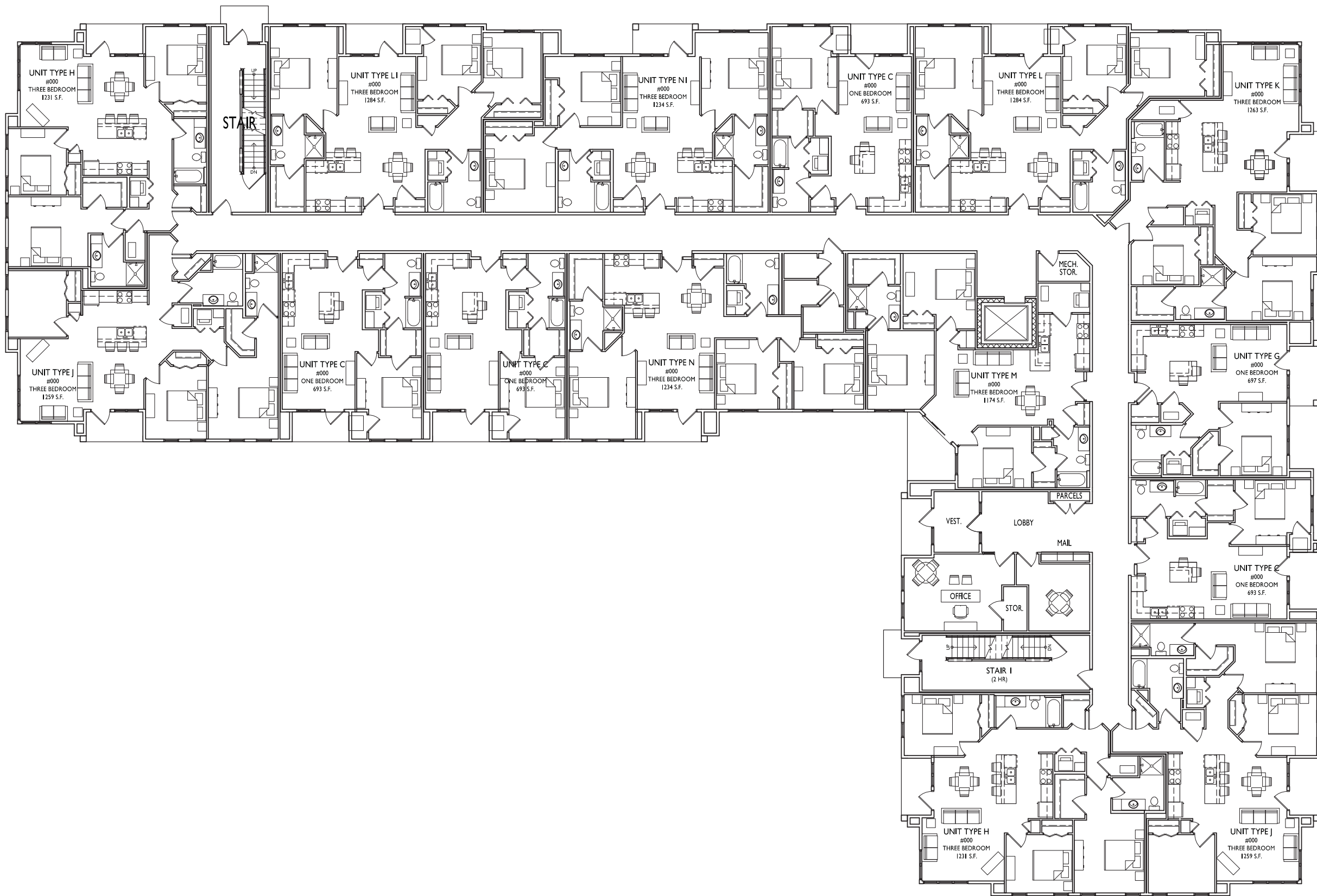
PROJECT TITLE  
**Maple Grove Commons**

McKee Road, Madison  
SHEET TITLE  
**First Floor Plan - Building I - 51 Unit**

SHEET NUMBER

**A-1.1**

PROJECT NO. **1355**  
© 2013 Knothe & Bruce Architects, LLC



**FIRST FLOOR PLAN**  
SCALE: 1/8"=1'-0"



19,212 SQ.FT.

ISSUED  
Revised GDP - November 19, 2014  
Issued for SIP Submittal - June 24, 2015

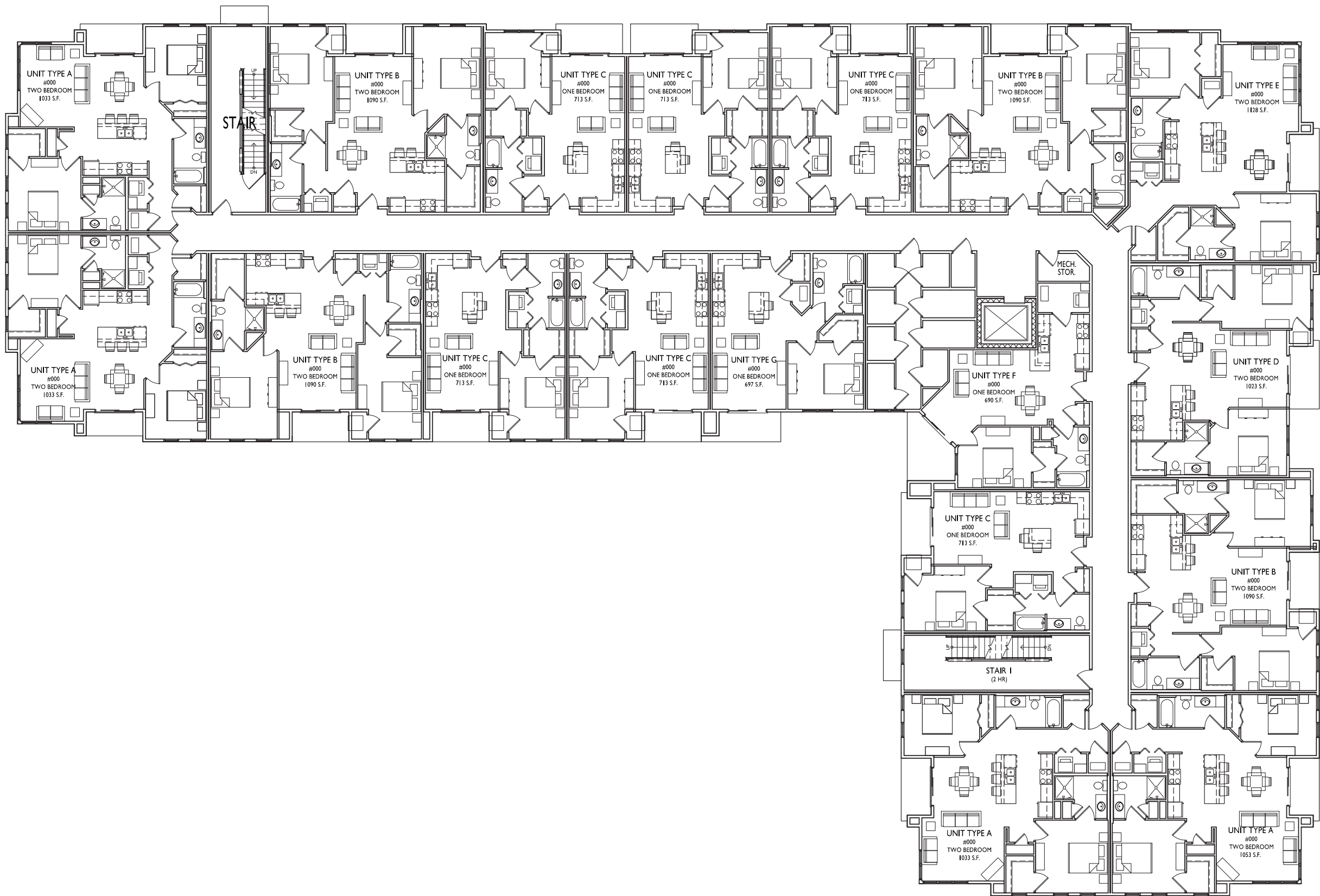
PROJECT TITLE  
**Maple Grove Commons**

McKee Road, Madison  
SHEET TITLE  
**Second Floor  
Plan - Building 1  
- 51 Unit**

SHEET NUMBER

**A-1.2**

PROJECT NO. **1355**  
© 2013 Knothe & Bruce Architects, LLC



**SECOND FLOOR PLAN**  
SCALE: 1/8"=1'-0"



19,248 SQ.FT. (SECOND FLOOR)



ISSUED  
Revised GDP - November 19, 2014  
Issued for SIP Submittal - June 24, 2015

PROJECT TITLE  
**Maple Grove Commons**

McKee Road, Madison  
SHEET TITLE  
**Third Floor Plan  
- Building I - 5 I  
Unit**

SHEET NUMBER

**A-1.3**

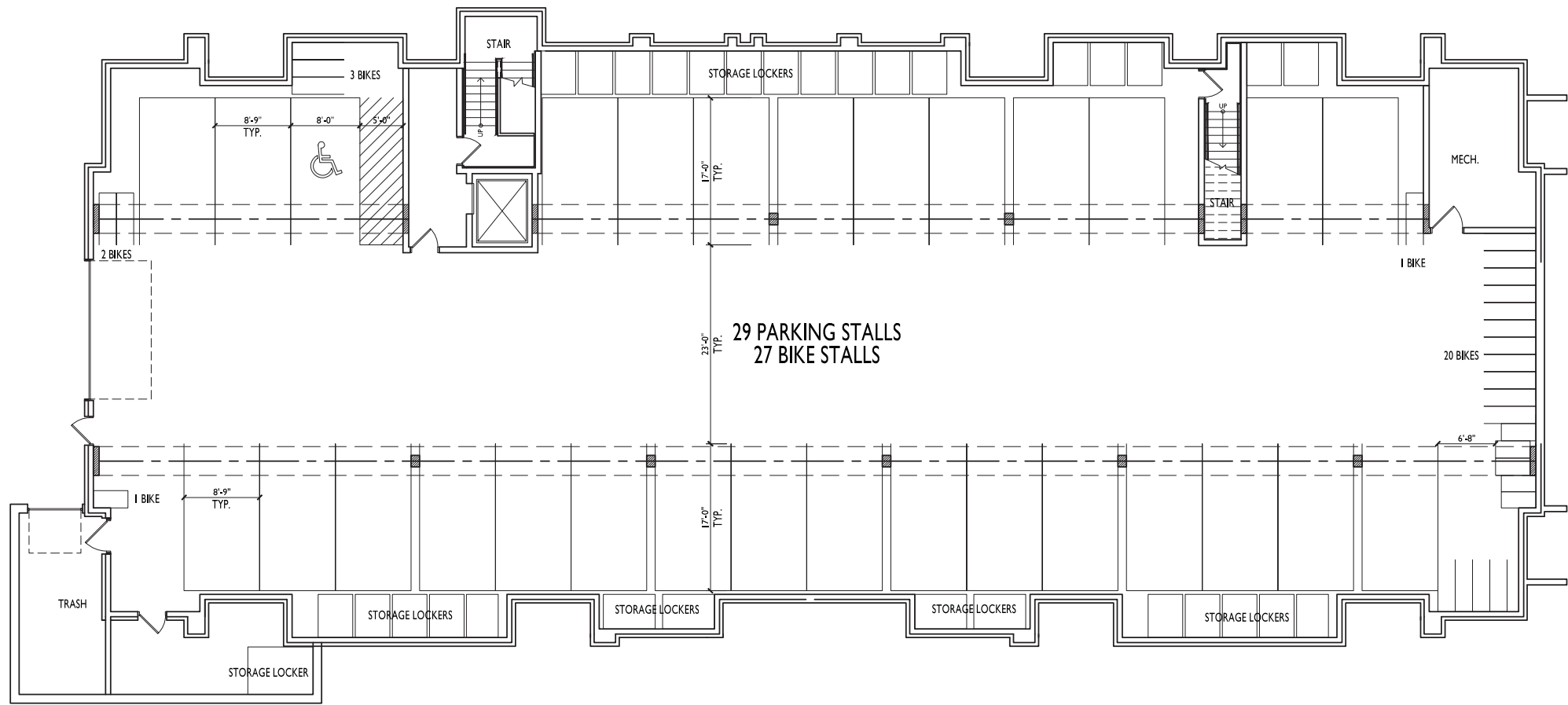
PROJECT NO. **1355**  
© 2013 Knothe & Bruce Architects, LLC



**THIRD FLOOR PLAN**  
SCALE: 1/8"=1'-0"



19,008 SQ.FT.



11,397 SQ.FT.

ISSUED  
Revised GDP - November 19, 2014  
Issued for SIP Submittal - June 24, 2015

PROJECT TITLE  
Maple Grove Commons

McKee Road, Madison  
SHEET TITLE  
Basement Plan - Building 2

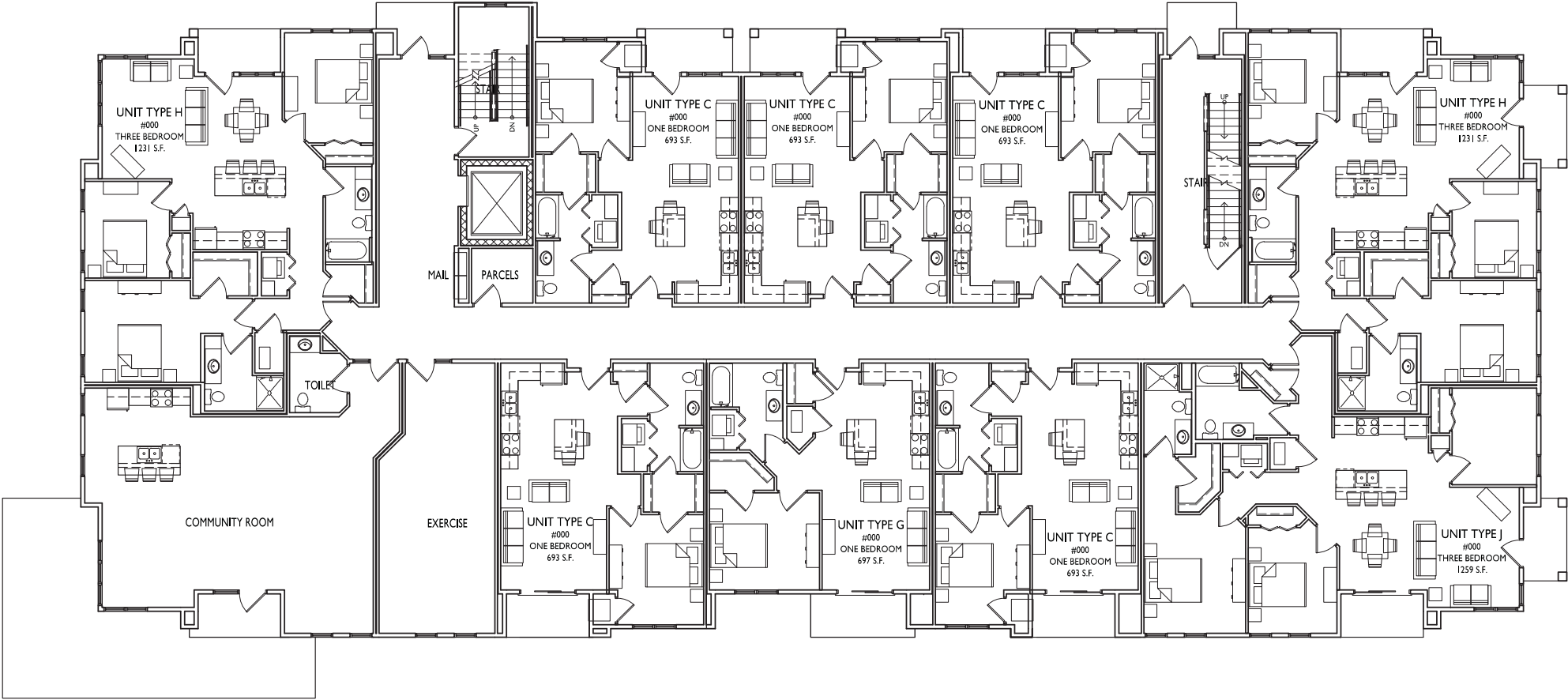
SHEET NUMBER

A-1.4

PROJECT NO. 1355  
© 2013 Knothe & Bruce Architects, LLC

1  
A-1.4  
BASEMENT PLAN  
SCALE: 1/8"=1'-0"





10,908 SQ.FT.

**FIRST FLOOR PLAN**  
SCALE: 1/8"=1'-0"



ISSUED  
Revised GDP - November 19, 2014  
Issued for SIP Submittal - June 24, 2015

PROJECT TITLE  
**Maple Grove Commons**

McKee Road, Madison  
SHEET TITLE  
**First Floor Plan - Building 2 - 29 Unit**

SHEET NUMBER

**A-1.5**

PROJECT NO. **1355**  
© 2013 Knothe & Bruce Architects, LLC





10,945 SQ.FT.

**SECOND FLOOR PLAN**  
SCALE: 1/8"=1'-0"



ISSUED  
Revised GDP - November 19, 2014  
Issued for SIP Submittal - June 24, 2015

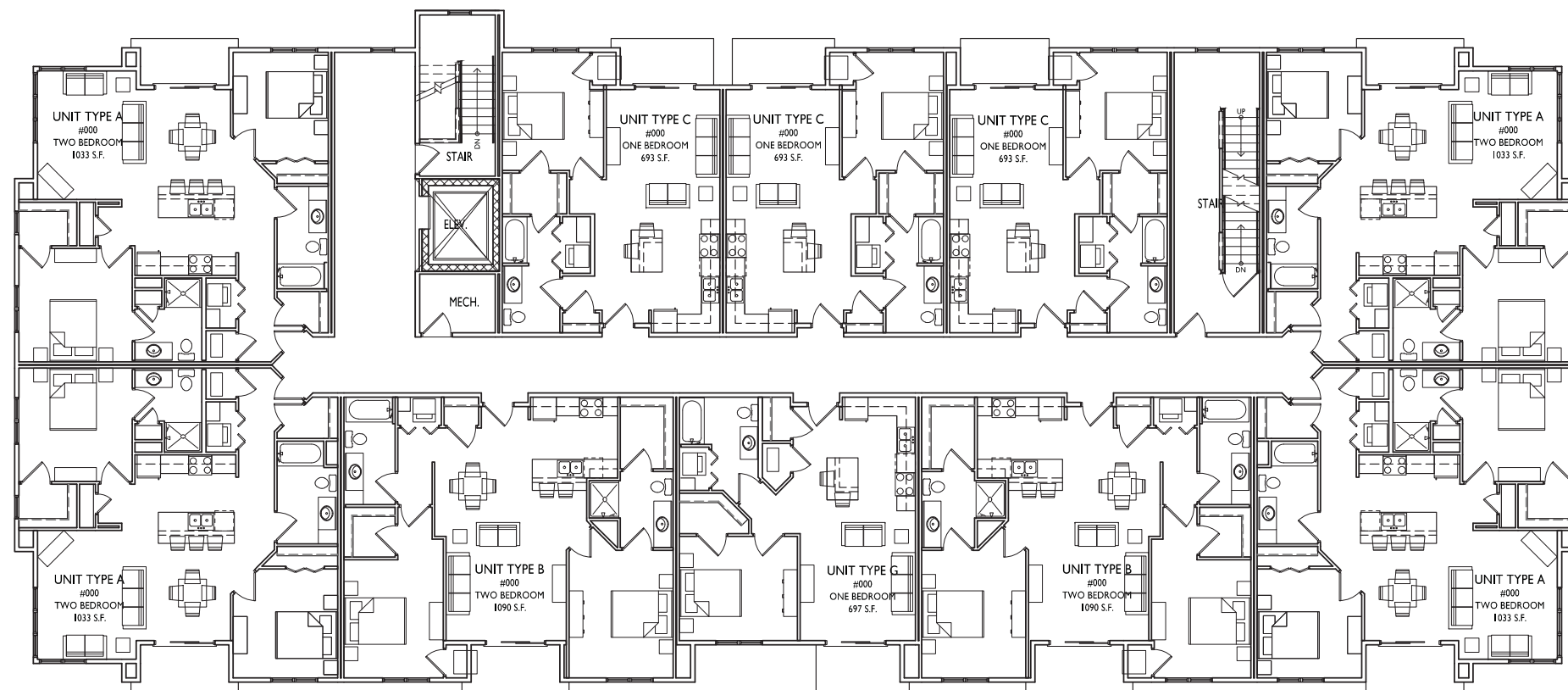
PROJECT TITLE  
**Maple Grove Commons**

McKee Road, Madison  
SHEET TITLE  
**Second Floor  
Plan - Building 2  
- 29 Unit**

SHEET NUMBER

**A-1.6**

PROJECT NO. **1355**  
© 2013 Knothe & Bruce Architects, LLC



10,832 SQ.FT.

**THIRD FLOOR PLAN**  
SCALE: 1/8"=1'-0"



**ISSUED**  
Revised GDP - November 19, 2014  
Issued for SIP Submittal - June 24, 2015

**PROJECT TITLE**  
Maple Grove Commons

**McKee Road, Madison**  
**SHEET TITLE**  
Third Floor Plan  
- Building 2 - 29  
Unit

**SHEET NUMBER**

**A-1.7**

**PROJECT NO.** 1355  
© 2013 Knothe & Bruce Architects, LLC



2 NORTH ELEVATION  
A-2.1 SCALE: 1/8"=1'-0"



1 WEST ELEVATION  
A-2.1 SCALE: 1/8"=1'-0"

ISSUED  
Revised GDP - November 19, 2014  
Issued for SIP Submittal - June 24, 2015

PROJECT TITLE  
Maple Grove Commons

McKee Road, Madison  
SHEET TITLE  
Elevations -  
Building 1 -  
51 Unit

SHEET NUMBER

A-2.1

PROJECT NO. 1355  
© 2013 Knothe & Bruce Architects, LLC





2  
A-2.2 SOUTH ELEVATION  
SCALE: 1/8"=1'-0"

ISSUED  
Revised GDP - November 19, 2014  
Issued for SIP Submittal - June 24, 2015



1  
A-2.2 WEST ELEVATION  
SCALE: 1/8"=1'-0"

PROJECT TITLE  
Maple Grove Commons

McKee Road, Madison  
SHEET TITLE  
Elevations -  
Building I - 51  
Unit

SHEET NUMBER

A-2.2

PROJECT NO. 1355  
© 2013 Knothe & Bruce Architects, LLC



2  
A-2.3  
NORTH ELEVATION  
SCALE: 1/8"=1'-0"



1  
A-2.3  
SOUTH ELEVATION  
SCALE: 1/8"=1'-0"

ISSUED  
Revised GDP - November 19, 2014  
Issued for SIP Submittal - June 24, 2015

PROJECT TITLE  
Maple Grove  
Commons

McKee Road, Madison  
SHEET TITLE  
Elevations -  
Building 2 - 29  
Unit

SHEET NUMBER

A-2.3

PROJECT NO. 1355  
© 2013 Knothe & Bruce Architects, LLC



ISSUED  
Revised GDP - November 19, 2014  
Issued for SIP Submittal - June 24, 2015

PROJECT TITLE  
**Maple Grove Commons**

McKee Road, Madison  
SHEET TITLE  
**Elevations -  
Building 2 - 29  
Unit**

SHEET NUMBER

**A-2.4**

PROJECT NO. **1355**  
© 2013 Knothe & Bruce Architects, LLC